



**HAL**  
open science

## **Influence of intermetallic particles on shot fatigue crack initiation in AA2050-T8 and AA7050-T7451**

Erembert Nizery, Jean-Yves Buffiere, Henry Proudhon, Armelle Danielou, Samuel Forest

### ► **To cite this version:**

Erembert Nizery, Jean-Yves Buffiere, Henry Proudhon, Armelle Danielou, Samuel Forest. Influence of intermetallic particles on shot fatigue crack initiation in AA2050-T8 and AA7050-T7451. FDMD II - JIP 2014 - Fatigue design & material defects, Jun 2014, Paris, France. pp.07003, <10.1051/mateconf/20141207003>. <hal-01814317>

**HAL Id: hal-01814317**

**<https://hal.science/hal-01814317v1>**

Submitted on 1 Aug 2018

**HAL** is a multi-disciplinary open access archive for the deposit and dissemination of scientific research documents, whether they are published or not. The documents may come from teaching and research institutions in France or abroad, or from public or private research centers.

L'archive ouverte pluridisciplinaire **HAL**, est destinée au dépôt et à la diffusion de documents scientifiques de niveau recherche, publiés ou non, émanant des établissements d'enseignement et de recherche français ou étrangers, des laboratoires publics ou privés.



HAL Authorization

# Influence of intermetallic particles on short fatigue crack initiation in AA2050-T8 and AA7050-T7451

Erembert Nizery<sup>1,2,a</sup>, Jean-Yves Buffiere<sup>1</sup>, Henry Proudhon<sup>2</sup>, Armelle Daniélou<sup>3</sup> and Samuel Forest<sup>2</sup>

<sup>1</sup>INSA Lyon, MATEIS, 25 av. Jean Capelle, 69621 Villeurbanne Cedex, France

<sup>2</sup>Mines ParisTech, Centre des Matériaux, BP. 87, 91003 Evry, France

<sup>3</sup>Constellium CRV, 725 rue Aristide Bergès, CRV CS 10027, 38341 Voreppe, France

**Abstract.** Fatigue crack initiation at particles is studied in hot rolled 2050-T8 and 7050-T7451 material, using 1 to 4 mm cross section specimens. Both size and aspect ratio of particles are observed to affect their probability of being damaged. In 2050-T8 material, the probability that a matrix crack initiate at a cracked particle increases with its size, and no effect of aspect ratio is observed. In 2050-T8 specimens, matrix cracks initiate at both pre-cracked (Al, Cu, Fe, Mn) particles and particles cracked during cycling. Initiation in 7050-T74 specimens occur on Mg<sub>2</sub>Si particles which may be cracked or debonded, and Al<sub>7</sub>Cu<sub>2</sub>Fe particles that are cracked during cyclic loading.

## 1 Introduction

In several high-strength aluminum alloys, fatigue initiation is known to occur at large particles [1]. In this study, initiation at particles is discussed in a 2050-T8 and a 7050-T7451 plate. Large particles in 2050 plate are identified to contain (Al, Cu, Fe, Mn) elements; 7050 plate contains particles identified as Al<sub>7</sub>Cu<sub>2</sub>Fe and Mg<sub>2</sub>Si.

## 2 Materials and method

For this experiment, rolled plates of material in 2050-T8 (60 mm) and 7050-T7451 (65 mm) were used. Composition and mechanical properties are described in [2-3]. Specimens with cross-section between 1 and 4 mm were machined at ¼ thickness along rolling direction (RD), and the flat surfaces (RD-TD Transverse Direction) were polished using SiC papers, diamond solutions (3 µm and 1 µm) and finally a colloidal silica solution (0.05 µm). Curved surfaces are polished up to 4000 SiC paper.

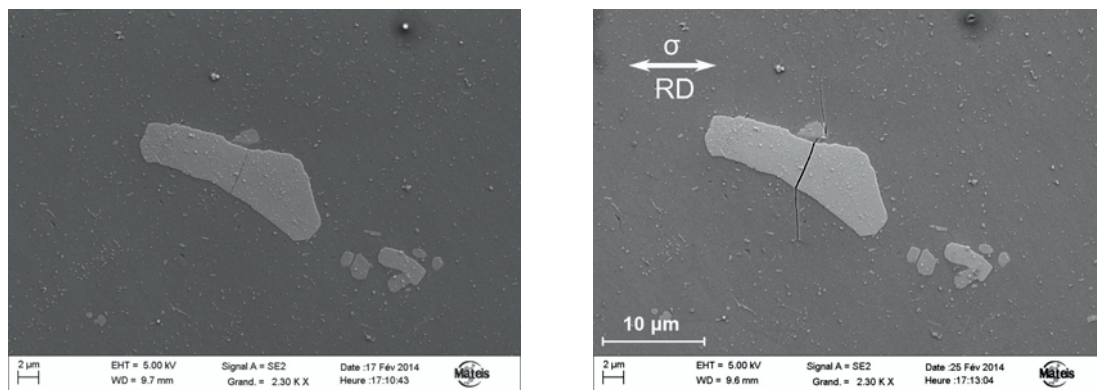
At initial state, particles are observed at magnifications of at least x2000 with a Scanning Electron Microscope (SEM) in Secondary Electrons mode (SE) on one surface of each specimen. Specimens are then cycled in a fatigue machine for several thousand cycles (R=0.1, f=20 Hz,  $\sigma_{max}$ =330-360 MPa), until crack initiations are detected. SEM-SE images are then compared to those of initial state, and image analysis is performed.

---

a Corresponding author: erembert.nizery@mines-paris.org

### 3 Results and discussion

The examination of 2050 and 7050 specimens shows that (Al, Cu, Fe, Mn) particles as well as  $Mg_2Si$  might be damaged at initial state, before any mechanical loading (Fig 1, left). This was only observed in very few cases for  $Al_7Cu_2Fe$  particles. Image analysis revealed that large particles and the ones elongated in RD are more likely to crack [3]. For  $Mg_2Si$  over 12  $\mu m$  equivalent diameter and (Al, Cu, Fe, Mn) particles over 15  $\mu m$  (in RD-TD plane), more than one half are cracked.



**Figure 1.** SEM-SE image of an (Al, Cu, Fe, Mn) particle in a 2050-T8 specimen, (left) at initial state and (right) after 11 000 cycles (330 Mpa).

Cracked particles leading to matrix cracks were distinguished from cracked ones that did not initiate in 2050 specimens. Among cracked (Al, Cu, Fe, Mn) particles, 20% have led to matrix cracks. It is observed that the larger particles initiate more easily matrix cracks, which is consistent with the classical model of projected defect area [4]. The shape ratio of particles, however, seems to have a negligible influence on the matrix crack initiation step.

After cycling loading in 2050 specimens, new cracked particles were observed. Although they represented less than 10% of the overall cracked particles, almost all of these new cracked particles initiated cracks and accounted for one third of matrix cracks. For specimens in 7050 alloy, cracks initiated at both cracked or debonded  $Mg_2Si$  and cracked  $Al_7Cu_2Fe$ . Differences in Young's modulus for these particles have already been reported [5], which could explain those observations.

### 4 Conclusion

This study has shown that pre-cracked particles as well as those cracked during loading may lead to matrix crack initiation in 2050-T8 and 7050-T7451 plates. Particles size both affect particle cracking and matrix crack initiation, whereas aspect ratio with respect to the rolling direction only influence particle cracking. Differences are observed between (Al, Cu, Fe, Mn),  $Al_7Cu_2Fe$  and  $Mg_2Si$  particles, which suggest that their behaviour should be taken into account when predicting initiation.

### References

1. S. Suresh, *Fatigue of materials* (Cambridge University Press, 1998)
2. P. Lequeu, K.P. Smith, A. Daniélou, J. Mater. Eng. Perform. **19**, 6 (2010)
3. E. Nizery, J.Y. Buffiere, H. Proudhon, A. Daniélou, S. Forest, Proc. of ICAA14 conf., *Accepted*
4. Y. Murakami, *Metal fatigue: effects of small defects and nonmetallic inclusion* (Elsevier, 2002)
5. G. Petton, *PhD thesis* (INSA Lyon, 1995)