



## **Review: Deciphering animal robustness. A synthesis to facilitate its use in livestock breeding and management**

Nicolas N.C. Friggens, Fabienne Blanc, D. Berry, Laurence Puillet

### **► To cite this version:**

Nicolas N.C. Friggens, Fabienne Blanc, D. Berry, Laurence Puillet. Review: Deciphering animal robustness. A synthesis to facilitate its use in livestock breeding and management. *Animal*, 2017, 11 (12), pp.2237 - 2251. 10.1017/S175173111700088X . hal-01813761

**HAL Id: hal-01813761**

**<https://hal.science/hal-01813761>**

Submitted on 26 May 2020

**HAL** is a multi-disciplinary open access archive for the deposit and dissemination of scientific research documents, whether they are published or not. The documents may come from teaching and research institutions in France or abroad, or from public or private research centers.

L'archive ouverte pluridisciplinaire **HAL**, est destinée au dépôt et à la diffusion de documents scientifiques de niveau recherche, publiés ou non, émanant des établissements d'enseignement et de recherche français ou étrangers, des laboratoires publics ou privés.



Distributed under a Creative Commons Attribution - NonCommercial - ShareAlike 4.0 International License

# Review: Deciphering animal robustness. A synthesis to facilitate its use in livestock breeding and management

N. C. Friggens<sup>1†</sup>, F. Blanc<sup>2,3</sup>, D. P. Berry<sup>4</sup> and L. Puillet<sup>1</sup>

<sup>1</sup>UMR 0791 Modélisation Systémique Appliquée aux Ruminants, INRA, AgroParisTech, Université Paris-Saclay, 75005 Paris, France; <sup>2</sup>INRA, UMR 1213 Herbivores, 63122 Saint Genès Champanelle, France; <sup>3</sup>Clermont Université, VetAgro Sup, UMR 1213 Herbivores, 63000 Clermont-Ferrand, France; <sup>4</sup>Animal & Grassland Research and Innovation Centre, Teagasc, Moorepark, Fermoy, P61 P302 Co. Cork, Ireland

(Received 18 January 2017; Accepted 27 March 2017; First published online 2 May 2017)

*As the environments in which livestock are reared become more variable, animal robustness becomes an increasingly valuable attribute. Consequently, there is increasing focus on managing and breeding for it. However, robustness is a difficult phenotype to properly characterise because it is a complex trait composed of multiple components, including dynamic elements such as the rates of response to, and recovery from, environmental perturbations. In this review, the following definition of robustness is used: the ability, in the face of environmental constraints, to carry on doing the various things that the animal needs to do to favour its future ability to reproduce. The different elements of this definition are discussed to provide a clearer understanding of the components of robustness. The implications for quantifying robustness are that there is no single measure of robustness but rather that it is the combination of multiple and interacting component mechanisms whose relative value is context dependent. This context encompasses both the prevailing environment and the prevailing selection pressure. One key issue for measuring robustness is to be clear on the use to which the robustness measurements will be employed. If the purpose is to identify biomarkers that may be useful for molecular phenotyping or genotyping, the measurements should focus on the physiological mechanisms underlying robustness. However, if the purpose of measuring robustness is to quantify the extent to which animals can adapt to limiting conditions then the measurements should focus on the life functions, the trade-offs between them and the animal's capacity to increase resource acquisition. The time-related aspect of robustness also has important implications. Single time-point measurements are of limited value because they do not permit measurement of responses to (and recovery from) environmental perturbations. The exception being single measurements of the accumulated consequence of a good (or bad) adaptive capacity, such as productive longevity and lifetime efficiency. In contrast, repeated measurements over time have a high potential for quantification of the animal's ability to cope with environmental challenges. Thus, we should be able to quantify differences in adaptive capacity from the data that are increasingly becoming available with the deployment of automated monitoring technology on farm. The challenge for future management and breeding will be how to combine various proxy measures to obtain reliable estimates of robustness components in large populations. A key aspect for achieving this is to define phenotypes from consideration of their biological properties and not just from available measures.*

**Keywords:** resilience, genotype-by-environment, reproduction, sustainability, trade-offs

## Implications

Breeding and management strategies that produce more robust animals will increase production efficiency in a sustainable way, and thereby contribute to meeting the challenges of food security for the expanding human population and climate

change. However, no consensus exists in the definition of robustness nor in ways to measure it. This study describes why a proper characterisation of robustness must take into account its multiple components, trade-offs between them, and dynamic elements such as the rates of response to, and recovery from, environmental perturbations. This then provides an improved basis for including robustness in management strategies and breeding programmes.

<sup>†</sup> E-mail: nicolas.friggens@agroparitech.fr

## Introduction

Interest in animal robustness as a trait of importance in the future design of livestock systems and genetic selection strategies is intensifying. However, no consensus exists on either the definition of animal robustness or on how best to measure it. Accordingly, the purpose of the present review is to attempt to provide a more globally coherent interpretation of robustness and related concepts for the animal sciences. It also explores the relationship between robustness and production efficiency. Achieving a more globally coherent clarification of robustness will facilitate the development of operational methods to quantify robustness, and will lead to a better understanding of, and ability to predict, genotype-by-environment ( $G \times E$ ) interactions. Both these elements are important pre-requisites for optimal inclusion of robustness in breeding programmes (Tixier-Boichard *et al.*, 2015) and in the design of sustainable livestock production systems (Dumont *et al.*, 2014).

### *The relevance of robustness to the challenges facing livestock production*

Globally, agriculture is undergoing seismic disruptions arising from the competing challenges of food security, the environment and societal needs. The challenge of food security for the expanding human population will inevitably reduce the use of human-edible foodstuffs for feeding livestock as well as the use of land suitable for growing cereals to provide grazing or forage for livestock (Schader *et al.*, 2015). At the same time, climate change predictions indicate a greater expected frequency of environmental perturbations (Hansen *et al.*, 2012). Given these challenges facing future animal production systems, it is expected that livestock feeding will rely more heavily on poorer quality, and more variable feeds such as by-products or marginal grazing environments (pastures in areas that are completely or partially unsuitable to arable agriculture (O'Mara, 2012)). Therefore, the animal of the future will need to be able to adapt to a much greater variability in both feed quality and quantity without a large compromise in performance; that is, animals will have to be robust to variability in the nutritional environment. It is also likely that livestock will be exposed to other environmental perturbations resulting from climate change such as exposure to novel and exotic pathogens (Yatoo *et al.*, 2012) or harsh weather conditions.

The above scenario is in line with a generally anticipated change in the animal production paradigm: moving away from farm systems that seek maximum control of the farm environment thereby minimising perturbations on production, towards systems accepting less control of the environment but instead focussing on a greater reliance on the animal's abilities to be resilient or adapt to environmental variability (Tixier-Boichard *et al.*, 2015). Ironically, the maximum environmental control paradigm created conditions in which genetic selection for production could erode animal robustness capability, because in these 'sheltered' conditions there was relatively little consequence of reduced robustness. That robustness has been reduced by such selection strategies is no longer in doubt, for

example, a meta-analysis of poultry selection experiments revealed that selection for growth has compromised the animal's immune function (Van der Most *et al.*, 2011). Similar findings, reporting unfavourable genetic correlations between production and other life functions, have been reported in a broad range of livestock species (Pryce *et al.*, 2002; Berry *et al.*, 2011; Berry *et al.*, 2016). Thus, it is not surprising that a strong consensus has emerged on the need to include robustness in future breeding and management strategies (Animal Task Force, 2013).

### **A generic robustness definition to facilitate its use in practise**

Including robustness in future breeding and management strategies implies being able to measure and quantify it but no single, simple, useful measure of robustness currently exists. This is largely because robustness is a complex trait which relates to a whole biological system. Typically, measures of animal performance are only one part of a biological system. For example, there are numerous studies that have investigated the ability of cows to maintain milk production when feed quality is reduced (e.g. Horan *et al.*, 2006; Beerda *et al.*, 2007), and these can be used to estimate the environmental sensitivity of milk production via the slope of change in milk production relative to the change in environment quality (usually referred to as a reaction norm (Lewontin, 1974)). However, to equate environmental sensitivity of a single trait such as milk yield with robustness could be considered meaningless; milk production or indeed any other single trait, is only one part of the entire biological system whose aim is to ensure a return on investment in reproductive effort, that is, to produce viable offspring. This biological system includes other important components such as use of body reserves as well as maternal behaviour. Selecting only on one component, such as milk yield in dairy cows, has been shown to reduce robustness, with unfavourable consequences on reproduction and health (Pryce *et al.*, 2002; Berry *et al.*, 2011). It is therefore important to emphasise this notion of a biological system when considering robustness. Indeed, the closest that one can come to a single measure of farm animal robustness is productive longevity because it is an integration over time of an animal's cumulative ability to overcome the environmental challenges it has faced throughout life. However, productive longevity has limitations as a robustness measure (apart from it being an end-point measure) as it should only be used to compare animals kept in identical environments. Differences in productive longevity between environments will be heavily influenced by the level of challenge experienced in the different local production environments, for example, farmer culling rules and environment harshness. A zero-challenge environment will facilitate long productive lifespan even in animals with zero robustness. Further, productive lifespan does not provide any information on the relative importance of different components of robustness.

The general consensus is that robustness of a given system (level  $n$ ) is the consequence of multiple components at lower

levels of organisation ( $n-1$ ,  $n-2$ , etc.), and that a given level of robustness can be achieved by different combinations of its component mechanisms (Kitano, 2004; Bateson and Gluckman, 2011). In general terms, the system can be a herd, an individual animal, a life function, an organ or a cell but if the robustness measure is to be of long-term value it must capture the integrity of the response to an environmental perturbation at the system level. Several reviews exist that discuss the robustness of biological systems within which the animal is a component (e.g. ten Napel *et al.*, 2011), but also where the biological system is, in fact, a subsystem within the animal (Kitano, 2004; Taff and Vitousek, 2016). For the purpose of this review we focus on the level of the animal. At the level of the animal, we can define robustness as:

The ability, in the face of environmental constraints, to carry on doing the various things that the animal needs to do to favour its future ability to reproduce.

This broad definition meets the previously stated requirement of considering the entire biological system, and is largely equivalent to other recent definitions of robustness in the animal sciences (Knap, 2009; Amer, 2012). However, it should be noted that this definition can, in principle, be applied to other levels of organisation of biological systems with only minor changes in wording, for example, at the level of the cell (Kitano, 2004) or at the level of the farm (ten Napel *et al.*, 2011) or species (Martin and Wiebe, 2004). At first sight, the definition of robustness appears to be too vague a definition to be of any use but it focusses attention on the key elements of robustness. These are discussed with the aim of illustrating how consideration of these elements can generate approaches to quantify robustness.

### **Key elements of robustness: favouring future ability to reproduce**

The aforementioned definition of robustness explicitly attributes a purpose to animal-level robustness, which is 'to favour its future ability to reproduce'. This should be seen in terms of the animal, male or female, maintaining the capacity to *eventually* continue disseminating its genes, either whilst the environment imposes constraints or in a less constraining future environment. Thus, the future ability to reproduce includes growth (needed to attain sexual maturity) and surviving until future reproductive opportunities, as well as successfully reproducing. It implies that robustness contributes directly to animal fitness; indeed the above definition of robustness is equally valid in both natural and artificial selection contexts. This is a useful property considering the emergence of the agro-ecology approach in which there is no longer a clear dichotomy between populations that are under natural selection and artificial selection. Instead, all species within an ecosystem are considered to be on a continuum of degree of management and thus affected, to varying degrees, by both artificial and natural selection.

With respect to selection, 'future ability to reproduce' often maps onto probability of surviving to breed, or breed again, or in other words achieving productive longevity, that is, avoiding death whether that be natural death or culling within a managed population. Some robustness components such as disease resistance will have a high value in both managed and natural environments, while others will be more environment dependent. Rabbits exist in both natural and farmed environments, often in close geographic proximity. For wild rabbits, the ability to cope with food shortage and to avoid predation are clearly important robustness components, whereas they are of little robustness value for farmed rabbits. On the other hand, the ability to avoid being culled for poor performance is an important characteristic in farmed rabbits but of lesser value to the wild rabbit. In general, robustness can be considered in the same way as a multi-trait index commonly used in breeding, made up of multiple components that are appropriately weighted according to their fitness value in a given environment and production system. This view of robustness is useful as it makes explicit the concept of relative contributions of different robustness components, and provides a framework within which to evaluate the consequences of trade-offs between robustness components that consider the environment in which the animal (or its progeny) exist. The association of robustness with fitness and selection is supported by evidence that the ability to cope with environmental challenge is heritable (Mirkena *et al.*, 2011; Drangsholt *et al.*, 2014).

The implications for quantifying robustness are that there is no single measure of robustness but rather that robustness is the combination of multiple and interacting component mechanisms. Although these mechanisms are all inherent traits of the animal, their relative value is context dependent. This context encompasses both the prevailing environment (e.g. strong heat stress tolerance is of greater value in environments where high temperatures occur) and the prevailing selection pressure. Favouring future ability to reproduce implies avoiding premature culling due to failure to meet the selection criteria of the farmer or the natural pressures imposed by the environment. Thus, the question of which robustness components are the most important to measure requires a clear vision of the environmental and selection context in which the animals will live and produce.

With respect to characterising the environmental context, it is important to identify what are major challenge types (nutritional availability, thermal stress, disease pressure, etc.) in the prevailing environment, and within this it is useful to consider the environment as having two components. The first is general 'harshness' of the environment which includes the nutritional conditions, the constraints imposed by the farming system, and other stable factors such as the average meteorological conditions of the location. The second component of the environment relates to the frequency and intensity of environmental perturbations. Some environments are harsh but relatively stable and some environments are on average good but with frequent perturbations. As will

become clear in the following sections, coping with general harshness relies on different component mechanisms of robustness than those needed to cope with perturbations. The former are usually referred to as adaptation mechanisms (Mirkena *et al.*, 2011) whereas the latter, which result in a dynamic pattern of response and recovery, are usually referred to as animal resilience mechanisms.

### Key elements of robustness: 'the various things the animal needs to do'

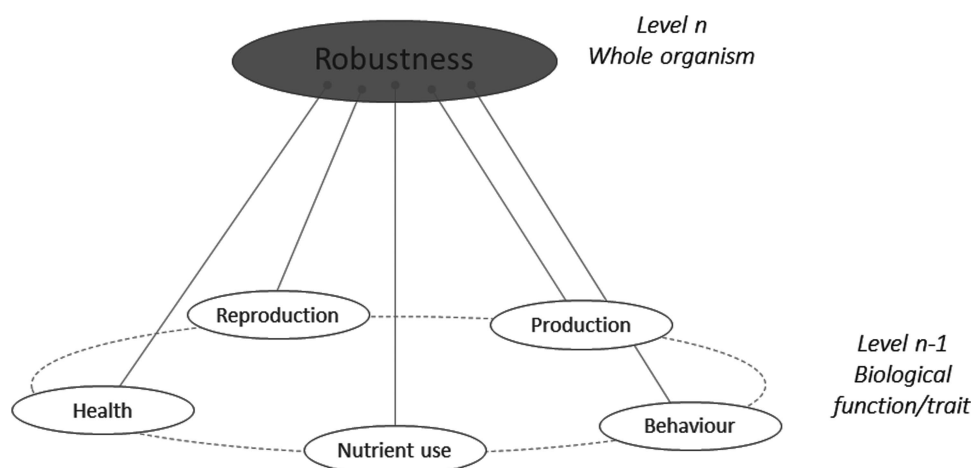
The 'various things' influencing robustness are those that maximise the future ability to reproduce, or in other words minimise the risk of the animal being culled or dying, in the prevailing environment. For instance, Sewalem *et al.* (2008) documented a greater culling risk in Canadian dairy cows that experienced calving difficulty or reduced reproductive performance. This means that a robust Canadian cow should calve without assistance and have good reproductive performance. In their definition of a robust dairy cow in New Zealand, Pryce *et al.* (2009) used characteristics related to calving, fertility, body size, foraging ability and resistance to disease. De Hollander *et al.* (2015) described longevity relative to culling reasons in sows. Calus *et al.* (2013) dissected robustness in dairy cattle into workability, health, persistency, fertility, mobility, fitness. As culling criteria are specific to each species, production context and environmental constraints, it is not easy to give a definitive list of specific traits that constitute robustness.

As shown in Figure 1, if one considers the functional components of robustness, then some commonality arises. Each functional component has, of course, associated behavioural, physiological and morphological traits making the phenotyping of the functional components possible. For instance, the New Zealand and Irish robust grazing cow has a good resource acquisition function relying on behaviour (exploration), morphology (small body size to not damage pastures soil) and physiology (digestive efficiency).

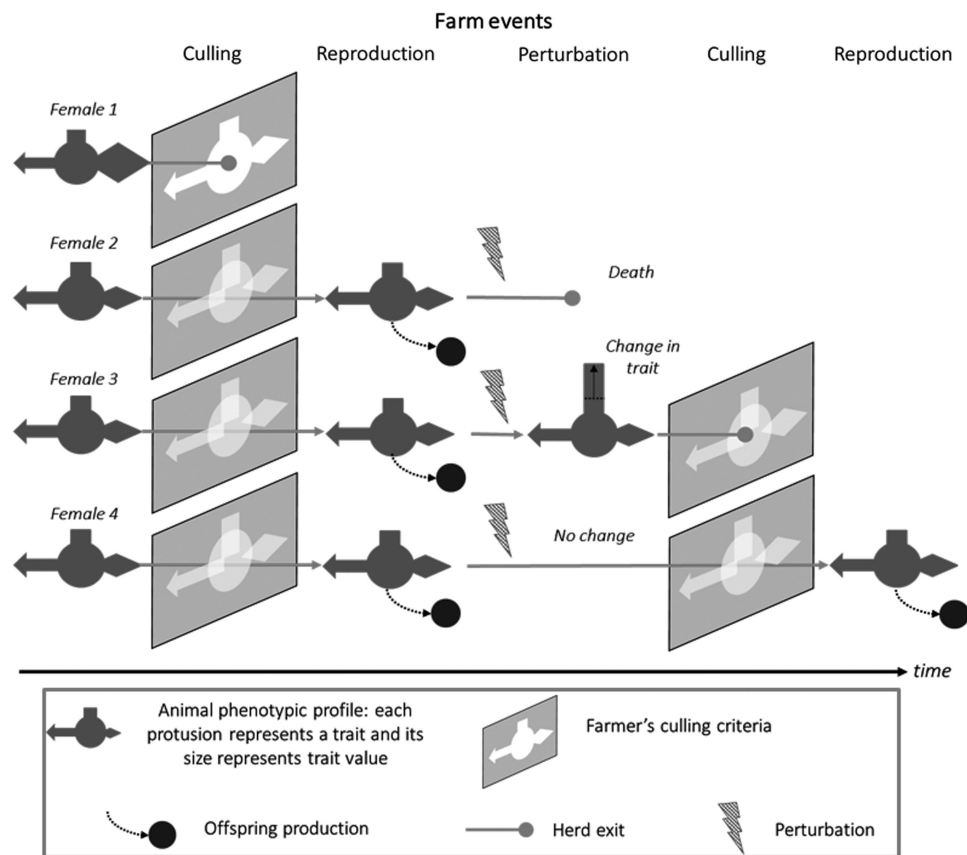
Conversely, any given trait may be associated with different functions. For instance, low aggressiveness contributes to social interactions (easy handling by the farmer) but also to health status (fewer injuries from handling). Globally, a robust farm animal is an animal:

- That produces in accordance with farmer expectations. This production function implies both quantitative aspects (quantity of product, weight or number of weaned offspring) and quality aspects (fat concentration in milk or meat, fibre diameter of wool).
- That makes maximum use of the available nutritional resource, which includes both resource acquisition and nutrient utilisation abilities. It implies traits related to feed intake (exploration behaviour for grazing; feeding behaviour), digestion and metabolism (digestive efficiency, absence of metabolic disorders, fibre degradation).
- That matches with the physical characteristics of its environment (temperature, humidity, surface). It implies thermoregulation capacity (heat or cold stress) and also locomotion aspects (hoof, body size).
- That is able to reproduce well and regularly, or at least at the interval desired by the production system. This implies temporal traits (interval between parturitions, days post-parturition to service) and qualitative traits (heat expression, easy of birth, semen quality).
- That has a good health status, or in other words, disease resistance or resilience. This implies all the traits related to immune status and their temporal variability.
- That fits well with the behavioural environment, including good social interactions, both with the farmer and contemporaries. This implies traits such as temperament (easy handling), milkability, parental care, aggressiveness and training abilities.

As shown in Figure 2, a robust animal is also one that responds appropriately to the prevailing environment, including not only perturbations but also the limits set by farm management. There is clearly a time dimension to robustness which is discussed in the next section.



**Figure 1** A schematic representation of the 'various things' operating at underlying levels ( $n-1$ ) that combine to build robustness at the level ( $n$ ) of the animal.

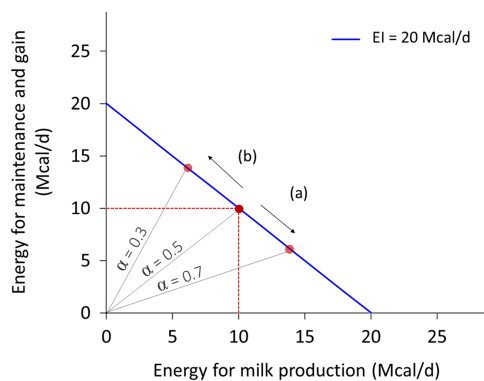


**Figure 2** Schematic representation the interaction between animal types and the prevailing environment, illustrated by the trajectories of four animal types in the herd, which give different levels of robustness depending on farm events. In this representation, different animal traits are portrayed as geometric protrusions (rectangle, arrow, diamond) and the farmers culling criteria as 'keyholes' into which the animals must fit if they are to progress. Animal 1 does not pass the first culling event: she does not have the traits values that match with farmer's expectations. Animals 2 to 4 pass through this first selection gate and stay in the herd where they breed and produce offspring. The next event is an environmental perturbation (e.g. a health challenge). Animal 2 does not survive the challenge. Animal 3 copes with the challenge but with a change in the value of one trait. Animal 4 copes with the challenge without changing traits values. At the second culling event, animal 3 does not pass the selection gate because of the change in a trait value. Animal 4 pass through the selection gate imposed by farmer's selection criteria and produces offspring at the next breeding event.

The multivariate aspect of robustness is increasingly being considered in breeding programmes. More recent selection indexes in dairy cattle now include non-productive, functional, traits (Egger-Danner *et al.*, 2015). However, these broader indexes do not *per se* imply that robustness of farmed livestock will improve. Robustness may still be selected against when, for example, considering traits like short-term efficiency where the fastest gains are made by maximising the production component at the expense of 'non-productive' functions (Puillet *et al.*, 2016). The ultimate examples of ignoring the need to maintain associated functions are in breeding programmes that have selected aggressively for increased meat production, for example, in young broilers, with relatively little direct consideration of the unfavourable consequences of this selection strategy for rapid growth on the ability of adult birds to reproduce (Nestor *et al.*, 1996). The trade-off between milk production and reproduction in dairy cows has been extensively reviewed elsewhere (Berry *et al.*, 2016).

Manipulating robustness through the net effect of multiple components requires an understanding of the interconnectedness among these components. Defining the

various functional components of robustness is only the first step. The next step is to characterise how and why the components are interlinked. One approach is to explore the underlying mechanisms, for example, associating production with reproduction (Boer *et al.*, 2012). This is extremely useful for linking key robustness mechanisms to gene expression and genomics. From the applied point of view, this is crucial if we are to develop biomarkers of (different types of) robustness. However, it is becoming clearer that making the link between molecular-level phenotypic measures and the higher-level functions they underpin is not trivial. From a systemic point of view, robustness derives from the interplay between mechanisms that individually may seem to counteract, or where several alternative mechanisms exist to achieve the same functionality (i.e. there is redundancy). Moreover, different mechanisms can confer a range of properties such as flexibility, plasticity, rigidity and modularity, on different parts of the system (Kitano, 2004; Bateson and Gluckman, 2011). Finding reliable biomarkers for robustness is thus a complex process requiring not only detailed knowledge of different mechanisms but also an understanding of their roles within the robustness

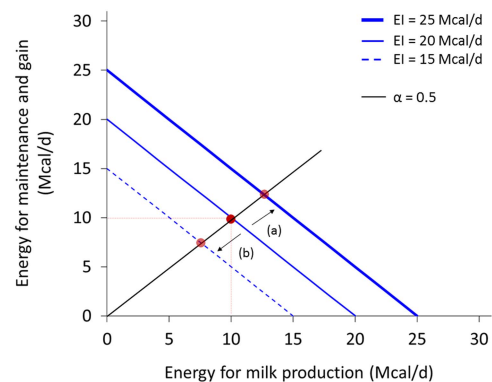


**Figure 3** Example of allocation of energy intake (EI, Mcal/day) between milk production and non-productive functions (defined here as maintenance and weight gain) for a dairy cow that consumes 20 Mcal/day. Energy for milk production =  $\alpha$  EI and energy for maintenance and gain =  $(1 - \alpha)$  EI. The blue line represents all the potential values for two traits depending on the allocation coefficient  $\alpha$ . The negative slope reflects the trade-off. The red dot in the middle corresponds to an animal with an allocation coefficient at 0.5, enabling to cover maintenance (assumed at 10 Mcal/day) and produces 13.5 kg of milk (at 0.74 Mcal/kg). With the same level of EI, increasing production level (arrow (a)) corresponds to an increase of allocation coefficient (0.7) and a decrease in the energy allocated for maintenance and gain. Conversely, increasing maintenance and gain (arrow (b)) corresponds to a decrease of allocation coefficient (0.3) and a decrease in milk production.

architecture. Nonetheless, the interaction among functions and associated traits can be usefully considered at a higher level, in terms of resource allocation.

Resource allocation is the process of partitioning a limited quantity of resource among activities or structures. It implies that the resource used for one activity cannot be used for another activity or process. Because of resource allocation, an animal cannot maximise every biological function expression (Stearns, 1992), and thus we should not expect animals to be robust to all types of environmental perturbations. Investing in robustness to thermal stress does not necessarily imply robustness to pathogen load. For the same quantity of available resource, an increased investment in one function necessarily implies a reduced investment in another function. Figure 3 depicts this concept for energy investment in milk production and in maintenance plus weight gain. The negative association between traits such as these is termed a trade-off. Although the correlation between traits is antagonistic, trade-offs are usually an adaptive response (i.e. beneficial) to a change in environment. Understanding these trade-offs is essential to predicting robustness and the interactions among the 'various things' of our definition.

Changing resource allocation, that is, making a trade-off among functions, is not the only response possible. The animal may be able to change its resource acquisition. Resource acquisition is the process of gathering the different resources required to survive and reproduce (e.g. energy, nutrients, water). In the context of livestock species, resource acquisition is often simplified to feed intake or energy intake. In some constraining situations (e.g. decreased feed quality) the animal may be able to increase acquisition to counteract the constraint, in others (e.g. heat stress) it may be that reducing acquisition without changing resource allocation is



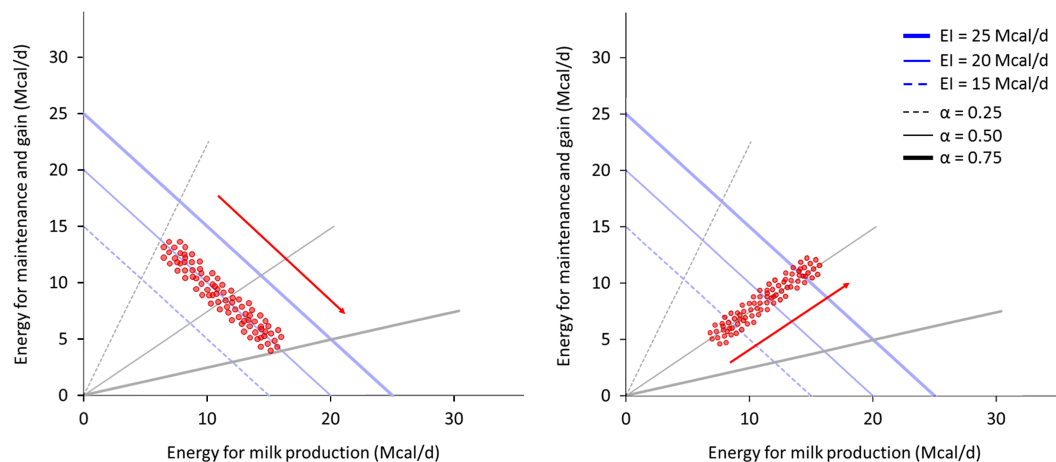
**Figure 4** Example of allocation of energy intake (EI, Mcal/day) between milk production and non-productive functions (defined here as maintenance and weight gain) for a dairy cow with three different levels of intake and the same level of allocation between milk production and non-productive functions.

an appropriate response. For instance, Figure 4 clearly illustrates that both milk production and energy for maintenance and gain can be increased with an increase in acquisition (25 Mcal/day) or decreased with a reduction in acquisition (15 Mcal/day). Both potential responses exist with constant allocation (i.e. 0.5 in this example).

When studying allocation responses to different environments it is important to also consider what is happening to acquisition. The relative variability of these two components in a population can conceal some trade-offs; Figure 5 illustrates this phenomenon. On the left panel, animals exhibit a large variability in allocation (between black lines) while having a small variation in acquisition (along the blue line). Non-productive functions and milk appear to be negatively correlated. On the right panel, animals exhibit small variability in allocation but a high variability in acquisition. Milk and non-productive functions appear positively correlated. The trade-off between milk and non-productive functions exists in both examples as energy is always allocated between these two functions. Yet, the observed correlation between them depends on the variability of acquisition relative to allocation (van Noordwijk and De Jong, 1986). However, the relative value for robustness of greater variability in allocation or acquisition can only be determined in the broader context of the prevailing environment and the production goals (Douhard *et al.*, 2014; Puillet *et al.*, 2016).

The resource acquisition and allocation approach provides a useful framework for interpreting observed  $G \times E$  interactions in a holistic manner (Saviotto *et al.*, 2015). It has also proved useful for predicting  $G \times E$  interactions in livestock systems (Douhard *et al.*, 2014; Puillet *et al.*, 2016). From the perspective of quantifying the relative importance of allocation and acquisition to animal robustness, we need to go a step further and include the costs associated with both processes. Altering resource acquisition or allocation is costly because it requires adaptive mechanisms. Change in acquisition usually implies changes in the digestive structure and absorptive mechanisms (i.e. cost of gastrointestinal and





**Figure 5** Example of observed associations between two traits linked by resource allocation within two contrasted populations of animals, for two traits that are in a trade-off within animal. The animals in the left panel population have a high variability in resource allocation (allocation coefficient between 0.25 and 0.75) and a low variability in resource acquisition (energy intake (EI) around 20 Mcal/day). The two traits, energy for maintenance and gain and energy for milk production, appear to be negatively correlated and it seems not possible to increase milk production without decreasing maintenance and gain. The animals in the right panel population have a high variability in resource acquisition (between 15 and 25 Mcal/day) and a low variability in allocation (coefficient around 0.5). The energy for maintenance and gain and the energy for milk production appear to be positively correlated and it seems possible to increase both milk production and maintenance and gain. This example shows that even if allocation still exists at animal level (and therefore shapes the relation among traits), the population level can conceal the relation among traits if allocation and acquisition are not evaluated together.

splanchnic tissues). Change in allocation implies channelling resources through different metabolic pathways, and maintaining the mechanisms that allow metabolic flexibility (e.g. multiple pathways). Thus, the benefits of changing acquisition and/or allocation to cope with a particular environment need to be weighed up against the associated costs. Typically, extreme combinations are not viable and there is usually an optimum for a given environment. The concepts involved in building cost-benefit models of resource allocation have been summarised by Friggens and Van der Waaij (2009). Recent advances in modelling of multi-criteria cost-benefits can be applied to identify the viable allocation combinations, and to further identify the optimum combinations.

The key issue with respect to choosing which components of robustness to measure is to be clear on the use to which they will be put. If the purpose is to identify biomarkers of (aspects of) robustness such as may be useful for molecular phenotyping or genotyping, then the measurements should focus on the physiological mechanisms underlying robustness, and the components of robustness are thus viewed in terms of these mechanisms (e.g. the role of key intermediaries such as cortisol). However, if the purpose of measuring robustness is in order to quantify the extent to which animals can adapt to limiting conditions then the measurements should focus on the life functions involved. When resources are limited it is important to be able to quantify the trade-off between these functions. When not limited, the animal's capacity to increase resource acquisition also comes into play.

### Key elements of robustness: 'carry on doing'

The preceding section described a key aspect of robustness, namely achieving an appropriate, adaptive, balance between

different life functions relative to prevailing conditions, and hence an optimal allocation of resources to these functions. An additional key aspect of robustness is the ability to adapt to environmental perturbations, and thus be resilient. This ability allows the animal to improve its chances of passing relatively unaffected through a period of challenging conditions, that is, to 'carry on doing the various things that the animal needs to do to favour its future ability to reproduce'. Multiple mechanisms of this resilience capacity exist, each of which operate on different timescales, and time is the key element for understanding them. Indeed, it seems implausible to evaluate robustness without considering its dynamic, resilience, properties.

### Adapting to short-term, acute, challenges

Animals can respond extremely rapidly to environmental challenges through behavioural and physiological changes, and these are often linked to the 'fight or flight' reaction. Such responses can occur in seconds and provoke changes in, for example, cortisol that persist for an hour or two (Canario *et al.*, 2013). As these innate survival responses are ubiquitous, they are rarely considered as components of robustness. However, using environmental challenges that persisted for 2 h, significant between-animal variability in rates of response and rates of recovery post-challenge have been documented (Larsen *et al.*, 2010; Sadoul *et al.*, 2015a). Sadoul *et al.* (2015a) compared two isogenic lines of rainbow trout and documented significant differences between lines in cortisol response to a confinement challenge, and evidence of two different coping strategies favouring either behavioural or physiological responses, suggesting a genetic component to these short-term adaptive mechanisms.

Several recent studies have attempted to quantify the inter-individual variability in response to short-term



nutritional challenges lasting 2 to 4 days, tracking performance and blood metabolites of animals before, during and after a shift from a standard feed to a very poor quality feed (Bjerre-Harpøth *et al.*, 2012; Friggens *et al.*, 2016). Both studies documented inter-animal variability in responses in dry matter intake and milk production which was largely related to pre-challenge levels. However, as shown in Figure 6, considerably more variability existed in the underlying components such as milk protein, and some blood metabolites, which suggests that the same overall response can be achieved through different combinations of underlying mechanisms, a well-recognised feature of robustness and adaptive capacity (Lee *et al.*, 2009). These results on short-term challenges suggest that it may be possible to select animals according to which adaptive mechanisms they favour. If, as seems likely, different mechanisms are better suited to different types of challenge, for example, heat stress *v.* nutritional stress, then this may be, especially in the era of genomics, a useful tool to select animals according to the type of challenge which is most likely to occur in the future.

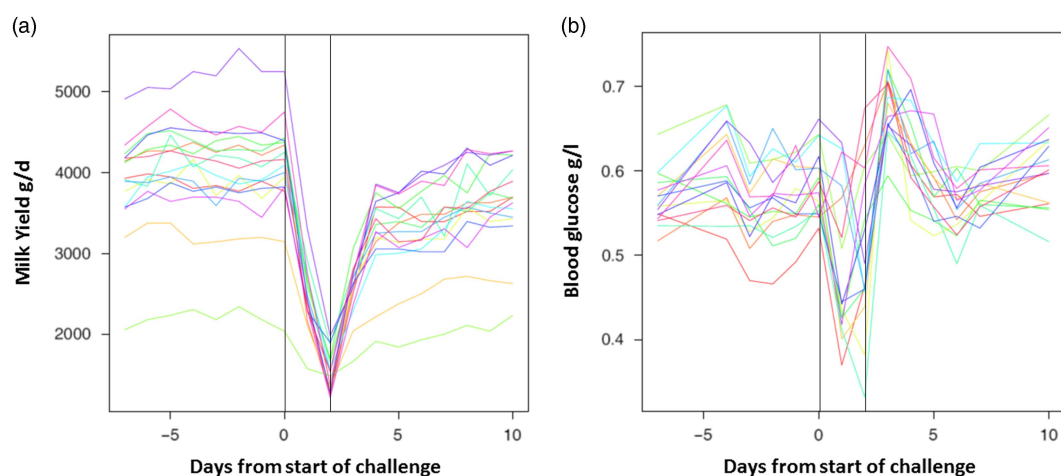
In the above studies, the nutritional challenge also provoked a negative energy balance, that is, a mobilisation of energy from the body reserves to buffer the shortfall in nutritional supply. The use of the body as a buffer, is a well-recognised role of body lipid, and to a much lesser extent body protein and bone mineral reserves. This type of body tissue mobilisation is a response to prevailing environmental conditions and, for the purpose of understanding adaptive mechanisms, should not be confused with the long-term patterns of body reserve change that are described below.

#### *Adaptations to long-term, predictable, challenges*

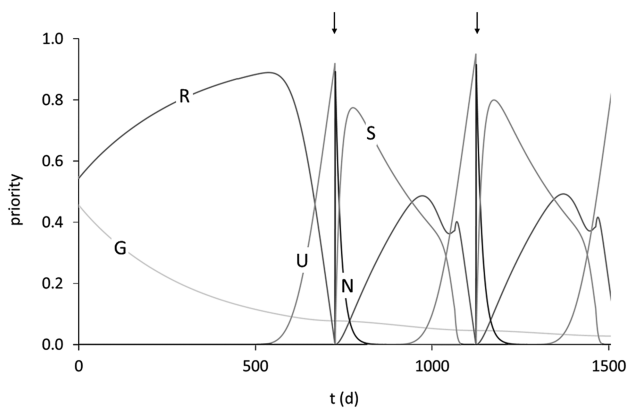
Some situations of nutritional challenge are predictable and thus can be anticipated, in evolutionary terms. That is to say, animals have developed temporal patterns of gene expression that provide long-term adaptations to predictable challenges. An extreme example of this is hibernation where

some animals accumulate body reserves in anticipation of a winter fast, and then use those reserves as a means to survive the winter (Humphries *et al.*, 2003). This anticipatory accumulation of reserves is a key component of the hibernation adaptation, which includes a massive reduction in energy expenditure through reduced exposure to the elements, inactivity and reduced metabolic rate. Hibernating animals that have insufficient body reserves have greatly reduced survival probabilities (Humphries *et al.*, 2003). In tropical environments, where wet seasons alternate with dry ones, the ability of sheep to survive is associated with a greater capacity to store fat during favourable seasons (Mirkena *et al.*, 2011). The concept of anticipatory changes in body reserves can also be applied to the nutritional challenges that arise from a predictable increase in metabolic burden for the animal. Thus, migratory birds build up body reserves in anticipation of the high energy cost of migration (itself an alternative way of dealing with harsh seasonal changes in environment).

Another example, perhaps more relevant for the livestock domain, relates to lactation. Cattle and other ruminant species accumulate body reserves during gestation that are subsequently mobilised in early lactation (Friggens *et al.*, 2007). In some other species, such as the rabbit and the pig, the greatest amount of body tissue mobilisation occurs in late pregnancy, which has a higher energy cost than early lactation due to the large litter sizes in these species. The mobilisation of body reserves during the period when the reproductive investment is greatest occurs even when there is an abundant food supply, that is, it is not environmentally driven but rather genetically driven. In dairy cattle, physiological adaptations to lipid metabolism, and associated changes in gene expression, have been shown to favour lipid accretion in gestation and mobilisation in early lactation (Blanc *et al.*, 2006). Given this, it is not surprising that the temporal pattern of change in body reserves throughout the reproductive cycles can be modulated by genetic selection (Banos *et al.*, 2005). These genetically driven changes in



**Figure 6** Example of individual animal trajectories before, during and after an environmental perturbation for (a) milk yield and (b) plasma glucose in 16 dairy goats. The perturbation, replacement of the normal feed by straw only commenced on day 0 and lasted until day 2, full details given in Friggens *et al.* (2016) (reproduced with permission).

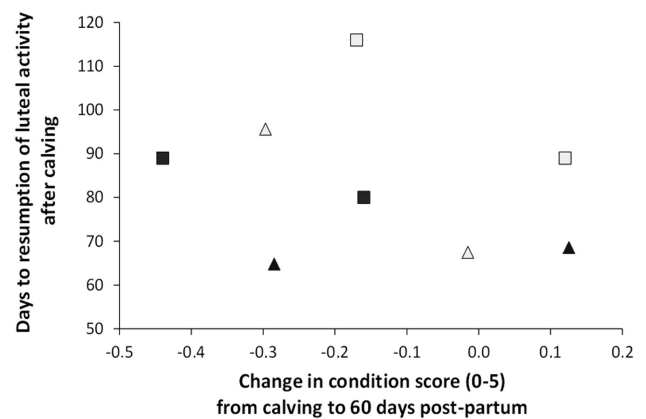


**Figure 7** Trajectories of the priorities for growth (G), balance of body reserves (R), ensuring survival of the unborn calf (U), ensuring survival of the newborn calf (N) and ensuring survival of the suckling calf (S) over 1500 days of life in the model of Martin and Sauvant (2010). The arrows indicate parturition times of two successive reproductive cycles. Priority for ageing is close to 0 at this stage of the lifespan. Reproduced with permission.

body reserves are adaptations to minimise the risk of reproductive investment failing and can be viewed as a one key element of a more general temporal dynamic of resource allocation.

#### *Life trajectories of resource allocation*

The optimum allocation of resources between life functions will change as the animal moves through different life stages. In most species, growth is the major resource-requiring function in early life, whereas reproduction (including lactation) becomes the major resource drain in adult life. Thus, the resource allocation considerations are incomplete unless their time dynamic is considered. As shown in Figure 7, it is useful to consider life trajectories of resource allocation under normal conditions, that is, those the animal evolved to deal with (Martin and Sauvant, 2010). This provides a biologically logical baseline against which to evaluate an animal's ability to cope with environmental perturbations. Clearly, if these relative priorities of resource allocation are altered, for instance, by genetic selection, in such a way as to divert resources away from those life functions that are key to robustness such as the accumulation of body reserves and development of immuno-competence, then robustness will be compromised. Furthermore, the evidence that the genetic expression of key robustness elements such as body reserve levels varies through life (Friggens *et al.*, 2007) strongly suggests that robustness itself varies across life stages. This raises important questions, the robust animal has a greater probability of an increased (productive) lifespan because of it being less likely to succumb to any given stressor but at what cost? Are there sensitive time-points in the life trajectory? What are the combined effects of the cumulative environments (stresses, diseases, etc.) during development of the young animal on the subsequent performance of adult genotypes? What are the relative contributions of robustness and innate longevity



**Figure 8** The effect of body fatness on the relationship between days to resumption of luteal activity and energy mobilisation measured as change in condition score. Thin cows (open symbols) have longer days to resumption of cyclicity after calving than fat cows (solid symbols) and the delay to recover cyclicity after calving is strongly reduced in thin cows when they experience positive energy balance after calving. Drawn from data of Wright *et al.* (1992) (■, □) and data from the experiment described by De la Torre *et al.* (2015) (▲, △).

to functional longevity? It would be extremely useful to be able to quantify this, in particular, with respect to arguments about lifetime efficiency. Currently, we have an insufficient understanding of these issues.

#### *Timing as key component of robustness*

A key adaptation with respect to 'carry on doing', that is, maintaining the ability to reproduce in the future, is the ability to shut down and postpone high-risk processes when the environmental conditions become harsh. Here the animal is making a trade-off but using time as the resource. A ubiquitous feature of female mammals is to cease oestrus cycling or prolong the *postpartum* anoestrus period when the nutritional conditions are too risky. This has been observed in all farmed species. The available evidence indicates that environmentally driven mobilisation of body tissue reserves (i.e. negative energy balance) is not only an energetic response but also has signal value to the female as an index of the quality of the current nutritional environment. Further, it also appears that the size of body lipid reserves provides a signal, probably via leptin and other adipokines, of the animal's ability to cope with any future nutritional challenge. Figure 8 shows that both of these factors delay return to oestrus cycling in beef cattle (Wright *et al.*, 1992; De La Torre *et al.*, 2015). This timing component of robustness, as evidenced by length of *postpartum* anoestrus, exhibits heritable variation between individuals, and has been negatively associated with increasing production levels (Royal *et al.*, 2002).

This time-related aspect of robustness has important implications for measuring it. It is clear that single time-point measurements to quantify robustness are of limited value because they do not permit measurement of responses to (and recovery from) environmental perturbations. The exception being single measurements of the accumulated

consequence of a good (or bad) adaptive capacity. Good examples of such a measurements are productive longevity and lifetime efficiency. However, the counterpoint to this limitation is that repeated measurements have a high potential to facilitate quantification of the animal's ability to cope with environmental challenges. Thus, we should be able to quantify differences in adaptive capacity from the kind of data that are increasingly becoming available with the deployment of automated monitoring technology on farm (Rutten *et al.*, 2013). The capability to obtain near-continuous measurement of performance at low cost (milk yield, BW, body condition and oestrus) not only facilitates the quantification of the time-related aspects of robustness but also makes it feasible to measure production efficiency over long time periods. This provides the opportunity to quantify the relationship between robustness and efficiency.

### Robustness and efficiency

Similarly to robustness, animal and system efficiency is also becoming increasingly important in livestock production (Berry *et al.*, 2015). There is a requirement for animals that efficiently convert resources into high-value products. However, what is not clear is whether it is possible to breed and manage animals that are both robust and efficient. Accordingly, this section explores the links between robustness and efficiency.

Efficiency is an attribute of animals that is much more measured than robustness. Traditionally, efficiency was considered from two perspectives, as the ratio between productive output and intake or via residual feed intake, which computes the residuals from the regression of intake on the predicted requirements for various energy sinks. If the residuals are negative, actual intake of the animal is lower than predicted intake and this animal is deemed to be more efficient. Heritable genetic variation in a plethora of feed efficiency traits has been clearly shown to exist in growing and lactating cattle (Berry and Crowley, 2012). Regardless of the approach taken, there are two features of the majority of efficiency studies that are relevant to the link with robustness: efficiency has generally been measured over short periods (weeks, months), and the major gains in short-term efficiency have come from increased production.

Selection for a greater production level increases short-term efficiency by diluting the cost of maintenance relative to the increased production level. In other words, there is a greater allocation of resources to production and consequently a decreased allocation to non-productive functions, that is, those that underpin robustness. Thus, when efficiency is defined and measured over short-time periods, such as the linear growth phase in young animals or peak-production in adults, there is an inevitable antagonism between robustness and efficiency. The repercussions of the effect of aggressive selection for short-term efficiency are now recognised (Berry *et al.*, 2015) as well as the need for a more comprehensive view of efficiency. A more comprehensive definition of

efficiency, one that considers the sustainability of animal performance, is achieved quite simply by considering efficiency over a longer period. If efficiency is measured over a lifetime in adult producers, it includes both the productive adult phase of life and the non-productive growing animal phase of life. Clearly, the non-productive growing phase will be diluted in animals that have an increased productive phase as adults. Thus, robustness, by increasing productive longevity, may be positively correlated with lifetime efficiency. This will be the case if the production benefit due to the increased productive lifespan outweighs the loss in production intensity entailed by allocating more resources to robustness (Puillet *et al.*, 2016).

Turning this reasoning around, it seems likely that lifetime efficiency provides a criterion for optimising the balance between robustness and production efficiency. Indeed, using an acquisition–allocation model, it has recently been shown that the functions with a high value for increased lifetime efficiency are different from those that give a high short-term efficiency (Puillet *et al.*, 2016). In particular, those functions that enabled the animal to maintain adequate levels of body reserves, and thus safeguard reproductive function, increased lifetime efficiency but were of little value for short-term efficiency. Using long-term efficiency as the criterion to maximise in selection for robustness *v.* production will also fit better with farm systems-level approaches to improving efficiency, which typically includes the whole life cycle of production. This will be particularly important when considering systems in which meat from young animals is the main product. In these systems, short-term efficiency measures ignore the inevitable costs associated with the adult breeding animals needed, somewhere in the system, to provide the young stock. For example, the beef cow herd accounts for 65% to 85% of the feed used in the entire beef production system (Montano-Bermudez *et al.*, 1990).

### Managing robustness: measuring and predicting

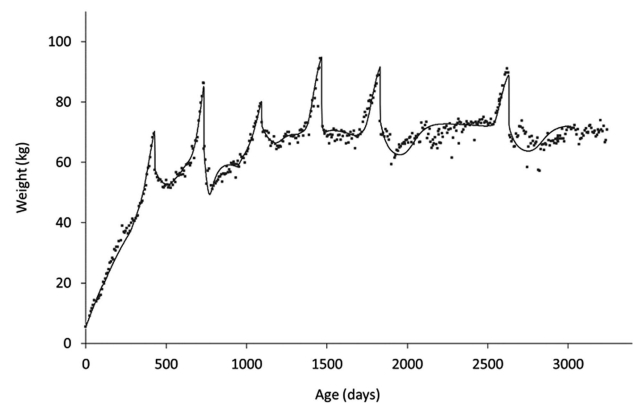
In this section we revisit the opening proposition of this paper, which was that a more globally coherent clarification of robustness would facilitate the development of operational methods and tools to quantify robustness, and a better ability to predict  $G \times E$  interactions. It is clear from the preceding sections that robustness is a complex trait with multiple components that evolve through time, and this seems to imply that measuring robustness is not straightforward. Nevertheless, there are promising avenues for operational measurement of robustness.

In particular, if the focus is on quantifying adaptive capacity then the opportunities provided by on-farm automated monitoring technologies are substantial. Measurement of milk yield and BW at each milking is commercially available and is routine in some milking systems. Systems to automatically weigh animals, either directly or using image analysis of body shape have been developed. Imaging technology has also recently been commercialised for

measuring body condition (Fischer *et al.*, 2015). There are also a number of monitoring technologies for measuring animal behaviour (accelerometers, position tracking, video), and an increasing number of sensors for measuring biomarkers of different aspects of health status in milk, in exhaled breath, and *in situ* with under-skin sensors or boluses in the rumen (e.g. temperature and pH).

Most of these technologies are currently targeted at detecting a particular event, such as oestrus in dairy cows, or monitoring a particular condition such as the detection of mastitis. The simple reduction in both the number of missed events, and in the variability between farms in quality of visual detection, that the use of these technologies brings is of considerable value. For example, the reported heritabilities of most reproductive traits are very low when made using farmer observations (Berry *et al.*, 2016). However, the heritability of the same trait is five times higher if made using data from monitoring technology (Royal *et al.*, 2002). In addition to improving the reliability of counting events, the time-series nature of data from these technologies can readily be used to phenotype individual variability in rates of response to environmental perturbation, and subsequent rates of recovery. This can be done for individual indicators but can also be done by combining indicators. The advantages of combining indicators that reflect different components of a condition has been demonstrated using the example of mastitis (Højsgaard and Friggens, 2010). Højsgaard and Friggens (2010) showed that using multivariate time-series statistics to combine different mastitis indicators (electrical conductivity, somatic cell count and lactate dehydrogenase), a degree of infection index could be constructed. This approach has promise for combining indicators of 'the various things' that are key components of robustness (or at least robustness to a particular type of environmental perturbation), with different statistical and modelling approaches proposed (Sadoul *et al.*, 2015b; Friggens *et al.*, 2016). The key issue is to know which robustness components should be included in a given index and which measures contain information about these components. In the case of Højsgaard and Friggens (2010), this choice was made using existing physiological knowledge; in the case of Friggens *et al.* (2016) a much more exploratory approach was taken. In both cases, it is worth noting that the usefulness of a measure as a biological indicator can be greatly affected by the measurement frequency. For example, high-frequency BW measurements can be useful to generate reliable measures of energy balance and to detect animals going off-feed (Thorup *et al.*, 2013), both of which are not possible when BW is only measured once a week.

The other key element of robustness is the trade-offs between life functions. Measuring these requires a different approach as they operate over considerably longer time-scales. If one is considering trade-offs between functions that are today readily measurable, such as growth and milk production, the issue is one of finding appropriate summarising measures. For a long time, a widely used summary measure of milk production was 305-day yield. However, this



**Figure 9** An example of a fitting procedure using a compartmental model to decompose BW trajectories to capture (the coefficients describing) the underlying functions of growth, body reserve gain and loss, pregnancy and lactation (from birth to 8 years of age in a dairy goat). The compartmental model used is described in Puillet and Martin (2017).

measure provides no information about the shape of the lactation curve making it difficult to, for example, characterise the effects of nutritional plane in early lactation on subsequent persistency. From the point of view of quantifying trade-offs between, say, milk production and body reserves, we need to describe the shapes of their profiles throughout lactation (Martin and Sauvant, 2010), or at least through early lactation when the trade-off between milk production and body reserves will play on the current ability to reproduce (Ollion *et al.*, 2016). In the context of trade-offs between life stages or of predicting long-term efficiency, it is useful if these methods can be applied across life stages. As shown in Figure 9, there have been recent developments to allow this to be done. In this study (Puillet and Martin, 2017), a compartmental model was used to capture the coefficients describing the underlying functions of growth, body reserve gain and loss, pregnancy and lactation with respect to the BW trajectory of the animal.

In the case where the life functions that one wishes to quantify are less readily measurable in large populations, for example, immunocompetence or components of fertility, the development of precision farming technologies has great promise. There are an increasing number of biosensors being deployed on farm facilitating high-frequency measurements of key components of the functions that we wish to quantify (e.g. [www.herdnavigator.com](http://www.herdnavigator.com)). There are also a number of technologies that will lead to the development of proxy measures. The various technologies for automated temperature measurement provide a useful health-related proxy, although at present this is almost exclusively used for monitoring rather than to phenotype this component of robustness.

As indicated above, lifetime efficiency may be the ultimate measure of robustness in farmed animals but measuring it requires measurement of feed intake. Although feed intake has long been measured in research stations, its measurement on commercial farms is greatly limited due to the high cost of the labour or equipment needed especially

for grazing animals. However, promising developments in accelerometers and other technologies offer the prospect of a useful proxy measures such as time spent eating. The challenge for the future will be how to combine various proxy measures to obtain reliable estimates of intake (and other robustness- and efficiency-related elements) in large populations.

### Managing robustness: genotype-by-environment interactions and selection

Genetic gain for a given trait or attribute is a function of: (1) the intensity of selection, (2) the accuracy of selection in the environment(s) of interest, (3) the extent of genetic variability in the characteristics of interest, (4) the generation interval, (5) the importance of the characteristic relative to all other animal attributes under selection and (6) the covariance that exist between the characteristic of interest and all other animal attributes in the breeding goal. A further consideration of particular relevance in the context of robustness is, to what extent the trait defined for inclusion in the breeding programme truly reflects robustness. Indeed, a paradox exists in the context of robustness where breeding programmes are now striving for homogeneity of animals while, in fact, preserving variability could be key to ensure (some) individuals are robust to the ever-changing environmental challenges. An added complication for breeding strategies is the (sometimes) relatively long time horizon until noticeable changes are observable – this implies that breeders, when constructing breeding goals for robustness, must be aware of not only the likely future production systems but also the future environmental challenges (e.g. the impact of climate change on exposure to exotic diseases).

It is clear from the preceding sections that robustness (and efficiency) is a long-term characteristic that takes cognisance of individual animal performance and functioning throughout all life stages. This therefore should ideally be captured in breeding goals. However, this is challenging for a number of reasons which are elaborated below (see also Rauw and Gomez-Raya, 2015). A first issue is that when using long-term measures several permutations and combinations of phenotypes can give rise to identical final outcomes – for example, two animals can have the same productive lifespan but one received considerable more medicinal interventions throughout its lifetime and was therefore less robust; such information must be captured. The monitoring tools already exist, or are in development, to ensure that procurement of real-time accurate phenotypes for many traits does not hinder achieving accurate genetic evaluations in conventional production systems, thereby facilitating the identification of genetically diverse animals. More difficult, however, is the achievement of accurate genetic evaluations under environmental conditions less frequent in a country, particularly those that are a challenge for using monitoring technologies (e.g. organic, grazing). One strategy to overcome this is to define a series of explicit

environments and exploit the correlation structure that exists among them to predict genetic merit in each environment based on estimated genetic merit in the other environments. However, the accuracy achievable is limited by the square root of the proportion of genetic variance in a given environment explained by the performance records originating from all other environments. As genetic gain is the product of several factors (Rendel and Robertson, 1950), low accuracy of selection compromises genetic gain. Moreover, such a strategy only facilitates genetic evaluations in discrete environments while, in reality, there is usually a continuum of environments. Fitting random regression models across a gradient of an environmental condition (e.g. average diet density, pathogen load) enables the estimation of genetic merit of an individual across all environments (Berry *et al.*, 2003); the level and slope of the individual animal deviation from the population mean regression slope can be viewed as a reaction norm. The (co)variance function can be used to estimate the extent of  $G \times E$  interactions across the gradient, whereas the individual animal coefficients reflect the extent to which each individual reacts differently to changes in the prevailing environment.

The intercept and slope(s) parameters from reaction norms can be used to categorise animals into generalists or specialists. The differentiation between a generalist and specialist refers to the slope of the individual random regression; a generalist is one whose phenotype (e.g. fitness) is relatively constant irrespective of the environmental conditions it is exposed to, whereas the specialist is the opposite. A generalist may therefore be thought to be robust to environmental challenges if the dependent variable is fitness, then a generalist will retain a similar level of fitness irrespective of environment. The use of reaction norms is therefore one phenotyping strategy for characterising the robustness of individuals (Rauw and Gomez-Raya, 2015), and the impact of breeding for different animal robustness types on other performance traits (e.g. lactation yield) can easily be quantified by correlating the slope of the reaction norm with the performance traits. Nonetheless it is not always possible to evaluate the performance of individuals in extreme environments (e.g. very high pathogen load which can result in considerable mortality if not genetically robust), this is especially true for the evaluation of selection candidates themselves. The advent of low-cost genomic tools, and strategies to generate accurate genetic evaluations based on genome sharing between relatives, opens the opportunity to 'sacrifice' close siblings of selection candidates by exposing them to harsh environments and utilising their genomic relationships with the selection candidate to obtain an accurate genetic evaluation pertinent to that environment. Up until now, without including genomic data into genetic evaluations, the maximum accuracy of selection for a candidate animal that could be achieved when phenotypes existed on full-sibs or half-sibs was 0.707 and 0.50, respectively.

The multi-component nature of robustness implies that breeding programmes must simultaneously consider all its

important components. Moreover, the long time horizon to observe the true lifespan phenotype of an individual implies a reduction in annual genetic gain due to the lengthening of the generation interval in the selection. Although incorporation of genomic data into genetic evaluations can compensate for this by providing some estimate of genetic merit for lifespan, these estimates are limited in predictive ability. Moreover, lifespan in particular, is likely to suffer from  $G \times E$  interactions given the likely differences in the relative importance of different traits contributing to lifespan in different environments. As previously described, the importance to lifespan of being able to cope with food shortage in wild rabbits is likely to be greater than in farmed rabbits. This, therefore, can impact the correlation structure among traits and between resilience and putative predictor traits. All of this indicates that considerable care should be taken in choosing the traits, and the timing of their measurement (stage of life, duration of measuring period), when designing breeding programmes for robustness. In addition to making best use of the biological understanding of robustness, statistical modelling issues need to also be considered. For example, a correlation measures the strength of the linear relationship among variables. If the relationship is non-linear, the estimated correlation will be a function of the mean of both traits; mean performance can differ between environments (e.g. constrained feeding *v. ad libitum* feeding), which has subsequent repercussions on the estimated correlations and the complexity of the breeding scheme that needs to be adopted.

Achieving high accuracy of selection without necessarily prolonging the generation interval requires the incorporation of early predictor traits into a multi-trait selection index to facilitate selection on all traits simultaneously. As stated earlier, single time-point measurements may be of limited value to quantify robustness but instead measurements over time are needed. The random regression methodology previously described for the derivation of reaction norms can also be used to model within-animal profiles over a time trajectory. The first derivative of such profiles can be used as a measure of rate of change in the trait. Such models, commonly termed test-day models, have been fitted to longitudinal data for many performance traits including milk production, body condition score and growth rate (Berry *et al.*, 2003; Banos *et al.*, 2005). They offer a means to concisely describe key elements of robustness. For a given individual, the rates of change in one trait relative to another describe the shift in priority over time between the two traits, and thus the trade-off between them.

Genetic evaluations are based on the estimation of genetic merit of individuals while simultaneously removing the contribution of systematic environmental effects (e.g. herd) to the phenotype. The model solutions for the systematic environmental effects such as herd can, however, provide useful information of the performance of that herd for the trait under investigation relative to the population as a whole or a sample population of contemporaries. Such information can be used in two ways. It can be used to provide a quantification of the

environment using the ultimate bio-monitoring system, that is, the animal (Mathur *et al.*, 2014), and has been also applied within a reaction norm approach (Knap and Su, 2008). This herd-level information also provides valuable management input. It can be used to target herd owners performing below par, to understand why, and where possible, to rectify management strategies to improve their animal robustness more in line with expectations based on genetic merit.

The use of genetic information in on-farm management can also be taken a step further. Achieving gains at farm level is not only a function of selecting the genetically elite females as potential dams of the next generation but also requires culling of females expected to generate less profit for the remainder of their lifetime. In this context, future expected resilience is a large contributor to the expected profit to be generated by a female for the remainder of her lifetime and is largely influenced by the number of remaining lactations. If the farmer, or their advisor, had this information available it would allow this factor to be used in making culling and re-breeding decisions. Kelleher *et al* (2015) developed what they called a culling index which considered additive genetic, non-additive genetic and animal permanent environmental effects as well as phenotypic factors of the animal itself such as age, calving date and pregnancy status. Transition matrices were used to model the likelihood of an animal surviving to the next and subsequent lactations based on her age, total genetic merit and calving date. Kelleher *et al* (2015) demonstrated, using validation, the superiority of using this tool to cull animals over and above culling purely on genetic merit.

## Concluding remarks

Robustness and adaptive capacity are complex characteristics unlikely to be pinned down by simple combinations of raw measures but instead requiring a systemic view. Defining the level, and thus the system, to which we wish to apply the notion of robustness allows the identification of promising traits among the possible measures of phenotype. This fits very much with the approach whereby phenotyping has been driven by genetic, and then genomic, selection needs: In order to select, we need to associate the genetic architecture with phenotypic performance, and the finer the description of the genetic architecture, the finer the description of the phenotype we would like. However, there is a real sense of a need to reverse this approach to define new phenotypes that are seen as desirable because they respond to societal needs for more durable, efficient and high welfare animals; and then see how to select for them. In other words, we need to define phenotypes from consideration of their biological properties and not just from available measures.

## Acknowledgements

This study benefitted from the interactions provided by the INRA PHASE project T-GAM. The authors wish to also thank Luc Delaby and Davi Savietto for valuable discussions on the

subject, and the numerous authors whose papers provided inspiration but who could not be included due to limits on the number of references.

## References

- Amer PR 2012. Turning science on robust cattle into improved genetic selection decisions. *Animal* 6, 551–556.
- Animal Task Force (eds). 2013. Research & innovation for a sustainable livestock sector in Europe: suggested priorities for support under Horizon 2020 to enhance innovation and sustainability in the livestock production sector of Europe's food supply chains. Animal Task Force White Paper, pp. 1–39. Retrieved 4 January 2017 from <http://www.animaltaskforce.eu>.
- Banos G, Brotherstone S and Coffey MP 2005. Genetic profiles of total body energy content of Holstein cows in the first three lactations. *Journal of Dairy Science* 88, 2616–2623.
- Bateson P and Gluckman P 2011. Plasticity, robustness, development and evolution. Cambridge University Press, Cambridge, UK.
- Beerda B, Ouweltjes W, Šebek LBJ, Windig JJ and Veerkamp RF 2007. Effects of genotype by environment interactions on milk yield, energy balance, and protein balance. *Journal of Dairy Science* 90, 219–228.
- Berry DP, Bermingham ML, Good M and More SJ 2011. Genetics of animal health and disease in cattle. *Irish Veterinary Journal* 64, 5.
- Berry DP, Buckley F, Dillon P, Evans RD, Rath M and Veerkamp RF 2003. Estimation of genotype-environment interactions in a grass-based system, for milk yield, body condition score, and body weight using random regression models. *Livestock Production Science* 83, 191–203.
- Berry DP and Crowley JJ 2012. Residual intake and body weight gain: a new measure of efficiency in growing cattle. *Journal of Animal Science* 90, 109–115.
- Berry DP, Friggens NC, Lucy MC and Roche JR 2016. Milk production and fertility in dairy cattle. *Annual Review of Animal Biosciences* 4, 269–290.
- Berry DP, Lassen J and de Haas Y 2015. Residual feed intake and breeding approaches for enteric methane mitigation. In *Livestock production and climate change: CABI climate change series* (ed. Malik PK, Bhatta R, Takahashi J, Kohn RA and Prasad CS), pp. 273–291. CABI, UK.
- Bjerre-Harpøth V, Friggens NC, Thorup VM, Larsen T, Ingvarsten KL and Moyes KM 2012. Decreased nutrient density to increase physiological imbalance for dairy cows at different stages of lactation: 1. Milk yield and component responses. *Journal of Dairy Science* 95, 2362–2380.
- Blanc F, Bocquier F, Agabriel J, D'Hour P and Chilliard Y 2006. Adaptive abilities of the females and sustainability of ruminant livestock systems. A review. *Animal Research* 55, 489–510.
- Boer HMT, Apri M, Molenaar J, Stötzel C, Veerkamp RF and Woelders H 2012. Candidate mechanisms underlying atypical progesterone profiles as deduced from parameter perturbations in a mathematical model of the bovine estrous cycle. *Journal of Dairy Science* 95, 3837–3851.
- Calus MPL, Berry DP, Banos G, de Haas Y and Veerkamp RF 2013. Genomic selection: the option for new robustness traits? *Advances in Animal Biosciences* 4, 618–625.
- Canario L, Mignon-Grasteau S, Dupont-Nivet M and Phocas F 2013. Genetics of behavioural adaptation of livestock to farming conditions. *Animal* 7, 357–377.
- De Hollander CA, Knol EF, Heuven HCM and van Grevenhof EM 2015. Interval from last insemination to culling: II. Culling reasons from practise and the correlation with longevity. *Livestock Science* 181, 25–30.
- De La Torre A, Recoules E, Blanc F, Ortigues-Marty I, D'Hour P and Agabriel J 2015. Changes in calculated residual energy in variable nutritional environments: an indirect approach to apprehend suckling beef cows robustness. *Livestock Science* 176, 75–84.
- Douhard F, Friggens NC, Amer PR and Tichit M 2014. Synergy between selection for production and longevity and the use of extended lactation: insights from a resource allocation model in a dairy goat herd. *Journal of Animal Science* 92, 5251–5266.
- Drangsholt TMK, Damsgård B and Olesen I 2014. Quantitative genetics of behavioural responsiveness in Atlantic cod (*Gadus morhua* L.). *Aquaculture* 420, 282–287.
- Dumont B, Gonz  les-Garc  a E, Thomas M, Fortun-Lamothe L, Ducrot C, Dourmad JY and Tichit M 2014. Forty research issues for the redesign of animal production systems in the 21st century. *Animal* 8, 1382–1392.
- Egger-Danner C, Cole JB, Pryce JE, Gengler N, Heringstad B, Bradley A and Stock KF 2015. Invited review: overview of new traits and phenotyping strategies in dairy cattle with a focus on functional traits. *Animal* 9, 191–207.
- Fischer A, Luginbuhl T, Delattre L, Delouard JM and Faverdin P 2015. Rear shape in 3 dimensions summarized by principal component analysis is a good predictor of body condition score in Holstein dairy cows. *Journal of Dairy Science* 98, 4465–4476.
- Friggens NC, Berg P, Theilgaard P, Korsgaard IR, Ingvarsten KL, L  vendahl PL and Jensen J 2007. Breed and parity effects on energy balance profiles through lactation: evidence for genetically driven body reserve change. *Journal of Dairy Science* 90, 5291–5305.
- Friggens NC, Duvaux-Ponter C, Etienne MP, Mary-Huard T and Schmidely P 2016. Characterizing individual differences in animal responses to a nutritional challenge: toward improved robustness measures. *Journal of Dairy Science* 99, 2704–2718.
- Friggens NC and van der Waaij EH 2009. Modelling of resource allocation patterns. In *Resource allocation theory applied to farm animal production* (ed. WA Rauw), pp. 302–320. CAB International Publishing, Wallingford, UK.
- Hansen J, Sato M and Ruedy R 2012. Perception of climate change. In *Proceedings National Academy of Science*, pp. E2415–E2423.
- H  jsgaard S and Friggens NC 2010. Quantifying degree of mastitis from common trends in a panel of indicators for mastitis in dairy cows. *Journal of Dairy Science* 93, 582–592.
- Horan B, Faverdin P, Delaby L, Rath M and Dillon P 2006. The effect of strain of Holstein-Friesian dairy cows and pasture-based system on grass intake and milk production. *Animal Science* 82, 435–444.
- Humphries MM, Thomas DW and Kramer DL 2003. The role of energy availability in mammalian hibernation: a cost-benefit approach. *Physiological and Biochemical Zoology* 76, 165–179.
- Kelleher MM, Amer PR, Shalloo L, Evans RD, Byrne TJ, Buckley F and Berry DP 2015. Development of an index to rank dairy females on expected lifetime profit. *Journal of Dairy Science* 98, 4225–4239.
- Kitano H 2004. Biological robustness. *Nature Reviews Genetics* 5, 826–837.
- Knap PW 2009. Robustness. In *Resource allocation theory applied to farm animal production* (ed. WA Rauw), pp. 288–301. CAB International Publishing, Wallingford, UK.
- Knap PW and Su G 2008. Genotype by environment interaction for litter size in pigs as quantified by reaction norms analysis. *Animal* 2, 1742–1747.
- Larsen T, R  ntved CM, Ingvarsten KL, Vels L and Bjerring M 2010. Enzyme activity and acute phase proteins in milk utilized as indicators of acute clinical *E. coli* LPS-induced mastitis. *Animal* 4, 1672–1679.
- Lee GJ, Atkins KD and Sladek MA 2009. Heterogeneity of lifetime reproductive performance, its components and associations with wool production and live-weight of Merino ewes. *Animal Production Science* 49, 624–629.
- Lewontin RC 1974. The analysis of variance and the analysis of causes. *American Journal of Human Genetics* 26, 400–411.
- Martin K and Wiebe KL 2004. Coping mechanisms of alpine and arctic breeding birds: extreme weather and limits to reproductive resilience. *Integrative and Comparative Biology* 44, 177–185.
- Martin O and Sauvant D 2010. A teleonomic model describing performance (body, milk and intake) during growth and over repeated reproductive cycles throughout the lifespan of dairy cattle. 1. Trajectories of life function priorities and genetic scaling. *Animal* 4, 2030–2047.
- Mathur RK, Herrero-Medrano JM, Alexandri P, Knol EF, ten Napel J, Rashidi H and Mulder HA 2014. Estimating challenge load due to disease outbreaks and other challenges using reproduction records of sows. *Journal of Animal Science* 92, 5374–5381.
- Mirkena T, Duguma G, Haile A, Tibbo M, Okeyo AM, Wurzinger M and S  lkner J 2011. Genetics of adaptation in domestic farm animals: a review. *Livestock Science* 132, 1–12.
- Montano-Bermudez M, Nielsen MK and Deutscher GH 1990. Energy requirements for maintenance of crossbred beef cattle with different genetic potential for milk. *Journal of Animal Science* 68, 2279–2288.
- Nestor KE, Noble DO, Zhu J and moritsu Y 1996. Direct and correlated responses to long-term selection for increased body weight and egg production in Turkeys. *Poultry Science* 75, 1180–1191.
- Ollion E, Ingrand S, Delaby L, Trommenschlager JM, Colette-Leurent S and Blanc F 2016. Assessing the diversity of trade-offs between life functions in early lactation dairy cows. *Livestock Science* 183, 98–107.



- O'Mara FP 2012. The role of grasslands in food security and climate change. *Annals Botany* 110, 1263–1270.
- Pryce JE, Coffey MP, Brotherstone S and Woolliams JA 2002. Genetic relationships between calving interval and body condition score conditional on milk yield. *Journal of Dairy Science* 85, 1590–1595.
- Pryce JE, Harris BL, Bryant JR and Montgomerie WA 2009. Do robust cows already exist? In *Breeding for robustness in cattle*. EAAP publication No. 126 (ed. M Klopčič, R Reents, J Philipsson and A Kuipers), pp. 99–112. Wageningen Academic Publishers, The Netherlands.
- Puillet L and Martin O 2017. A dynamic model as a tool to describe the variability of lifetime body weight trajectories in ruminant females. *Proceedings 64th EAAP Meeting* p150.
- Puillet L, Réale D and Friggens NC 2016. Disentangling the relative roles of resource acquisition and allocation on animal feed efficiency: insights from a dairy cow model. *Genetics Selection Evolution* 48, 72.
- Rauw WM and Gomez-Raya L 2015. Genotype by environment interaction and breeding for robustness in livestock. *Frontiers in Genetics* 6, 310.
- Rendel J and Robertson A 1950. Estimation of genetic gain in milk yield by selection in a closed herd of dairy cattle. *Journal of Genetics* 50, 1–8.
- Royal MD, Pryce JE, Woolliams JA and Flint APF 2002. The genetic relationship between commencement of luteal activity and calving interval, body condition score, production, and linear type traits in Holstein-Friesian dairy cattle. *Journal of Dairy Science* 85, 3071–3080.
- Rutten CJ, Velthuis AGJ, Steeneveld W and Hogeveen H 2013. Invited review: sensors to support health management on dairy farms. *Journal of Dairy Science* 96, 1928–1952.
- Sadoul B, Leguen I, Colson V, Friggens NC and Prunet P 2015a. A multivariate analysis using physiology and behaviour to characterize robustness in two isogenic lines of rainbow trout exposed to a confinement stress. *Physiology and Behaviour* 140, 139–147.
- Sadoul B, Martin O, Prunet P and Friggens NC 2015b. On the use of a simple physical system to study robustness features in animal sciences. *PLoS ONE* 10, e0137333.
- Savietto D, Friggens NC and Pascual JJ 2015. Reproductive robustness differs between generalist and specialist maternal rabbit lines: the role of acquisition and allocation of resources. *Genetics Selection Evolution* 47, 2.
- Schader C, Muller A, El-Hage Scialabba N, Hecht J, Isensee A, Erb KH, Smith P, Makkar HPS, Kloche P, Leiber F, Schwegler P, Stolze M and Niggli U 2015. Impacts of feeding less food-competing feedstuffs to livestock on global food system sustainability. *Journal Royal Society Interface* 12, 20150891.
- Sewalem A, Miglior F, Kistemaker GJ, Sullivan P and Van Doormaal BJ 2008. Relationships between reproduction traits and functional longevity in Canadian dairy cattle. *Journal of Dairy Science* 91, 1660–1668.
- Stearns SC 1992. *The evolution of life histories*. Oxford University Press, Oxford, UK.
- Taff CC and Vitousek MN 2016. Endocrine flexibility: optimizing phenotypes in a dynamic world. *Trends in Ecology and Evolution* 31, 476–488.
- ten Napel J, van der Veen AA, Oosting SJ and Groot Koerkamp PWG 2011. A conceptual approach to design livestock production systems for robustness to enhance sustainability. *Livestock Science* 139, 150–160.
- Thorup VM, Højsgaard S, Weisberg MR and Friggens NC 2013. Energy balance of individual cows can be estimated in real-time on-farm using frequent liveweight measures even in the absence of body condition score. *Animal* 7, 1631–1639.
- Tixier-Boichard M, Verrier E, Rognon X and Zerjal T 2015. Farm animal genetic and genomic resources from an agroecological perspective. *Frontiers in Genetics* 6, 153.
- Van der Most PJ, de Jong B, Parmentier HK and Verhulst S 2011. Trade-off between growth and immune function: a meta-analysis of selection experiments. *Functional Ecology* 25, 74–80.
- van Noordwijk AJ and De Jong G 1986. Acquisition and allocation of resources: their influence on variation in life history tactics. *The American Naturalist* 128, 137–142.
- Wright IA, Rhind SM, Whyte TK and Smith AJ 1992. Effects of body condition at calving and feeding level after calving on LH profiles and the duration of the post-partum anoestrus period in beef cows. *Animal Production* 55, 41–46.
- Yatoo MI, Kumar P, Dimri U and Sharma MC 2012. Effects of climate change on animal health and diseases. *International Journal Livestock Research* 2, 15–24.