



# Experimental study of the Ultra High Temperature metamorphism of a restitic metapelitic granulite: role of a previous partial melting event on the UHT metamorphism and influence of the redox state.

Christian Nicollet, Daniel Vielzeuf, Régine Savoye, Valérie Bosse

## ► To cite this version:

Christian Nicollet, Daniel Vielzeuf, Régine Savoye, Valérie Bosse. Experimental study of the Ultra High Temperature metamorphism of a restitic metapelitic granulite: role of a previous partial melting event on the UHT metamorphism and influence of the redox state.. Experimental Mineralogy, Petrology and Geochemistry XVI, Jun 2018, clermont fd, France. hal-01812154

**HAL Id: hal-01812154**

**<https://hal.science/hal-01812154>**

Submitted on 11 Jun 2018

**HAL** is a multi-disciplinary open access archive for the deposit and dissemination of scientific research documents, whether they are published or not. The documents may come from teaching and research institutions in France or abroad, or from public or private research centers.

L'archive ouverte pluridisciplinaire **HAL**, est destinée au dépôt et à la diffusion de documents scientifiques de niveau recherche, publiés ou non, émanant des établissements d'enseignement et de recherche français ou étrangers, des laboratoires publics ou privés.



# Experimental study of the Ultra High Temperature metamorphism of a restitic metapelitic granulite: Role of a previous partial melting event on the UHT metamorphism and influence of the redox state

Christian NICOLLET(1), Daniel VIELZEUF(2), Régine SAVOYE(1) and Valérie BOSSE(1)  
(1) Laboratoire Magmas et Volcans, Université Clermont Auvergne, CNRS, IRD, OPGC, F-63000 Clermont-Ferrand  
(2) CInAM, AMU and CNRS, Campus de Luminy 13288 Marseille

## Introduction

The origin of UHT metamorphism in the continental crust is still matter of debate. Partial melting probably plays a key role. UHT metamorphism occurs at temperatures above the fluid-absent melting of most crustal rocks. Partial melting is an endothermic process that consumes heat and buffers the temperature at around 750-850°C. Thus, partial melting prevents a fertile crust to attain UHT. Conversely, UHT conditions can be more easily reached upon refractory / restitic rocks and occur preferentially in terranes that underwent previous partial melting event and melt loss..

## UHT metamorphism in the Gruf complex (Central Alps)

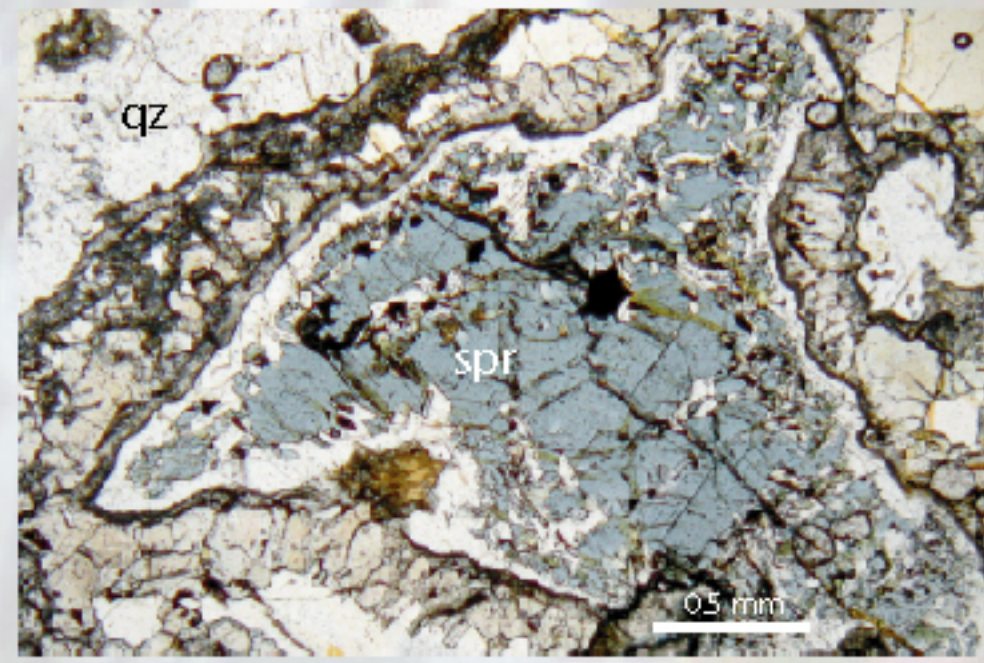


UHT granulite paragenesis and complex retrograde evolution.

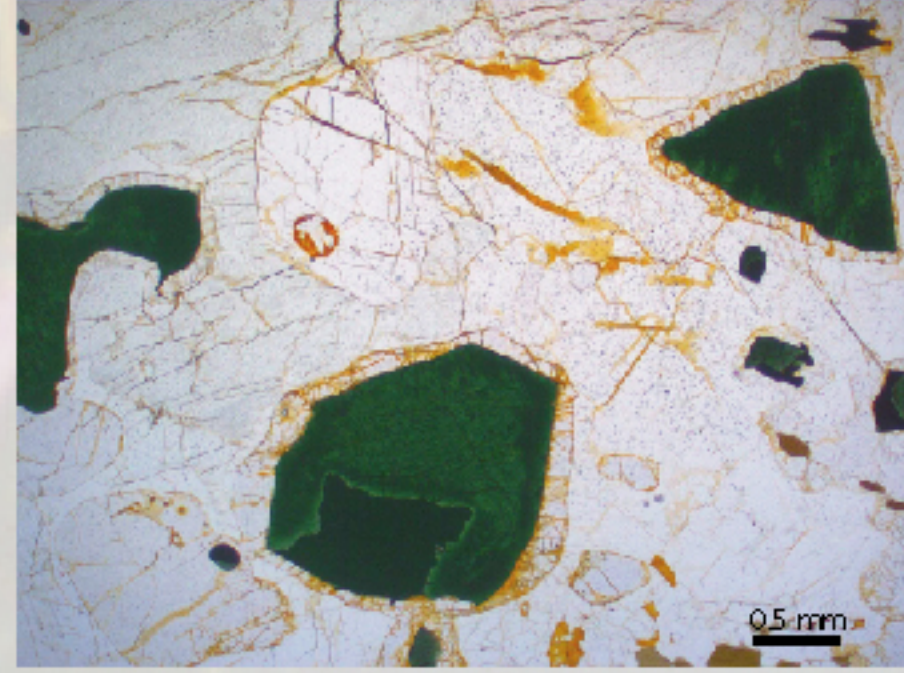
The Gruf complex in the Lepontine Alps could confirm this scenario; it is one of the rare occurrences of Eocene UHT metamorphism in the world. This terrane has also suffered the post Hercynian high-thermal regime responsible of the widespread formation of granulites in the Austro-alpine domain and Southern Alps and consequently of the crust differentiation. We propose that the typical UHT parageneses of the Gruf complex crystallised from refractory / restitic lithologies. The refractory character was acquired by fluid-absent melting reactions during this post Hercynian metamorphic event and allowed reaching and recording UHT conditions during the Alpine cycle.

## Spr + Qz versus Spl + Qz assemblages

The typical mineral assemblage diagnostic of UHT metamorphism Spr + Qtz is sometimes replaced by Spl + Qz under similar P-T conditions. The reason for this dichotomy is not yet understood. These assemblages could be sensitive to  $f(O_2)$ .



Complex coronas around Spr and Qtz Andriamena formation, N Madagascar



Coronas of Crd around Spl in contact with Qz according to the retrograde reaction  $Spl + Qtz = Crd$  Beraketa formation, S Madagascar

## Experiments

In order to bring new insights to this discussion, we conducted experiments in an internally-heated pressure vessel (BBL) (except 2 runs in a piston cylinder apparatus) on a metapelitic granulite of the Ivrea zone (STR80) composed of Qtz-Sil-Kf±Pl±Bt±Rt (typical "stronalite"). This rock is considered to be representative of the lower crust after extraction of a significant melt proportion. It would represent a restite associated with the process of differentiation of the crust leaving a restitic lower crust.

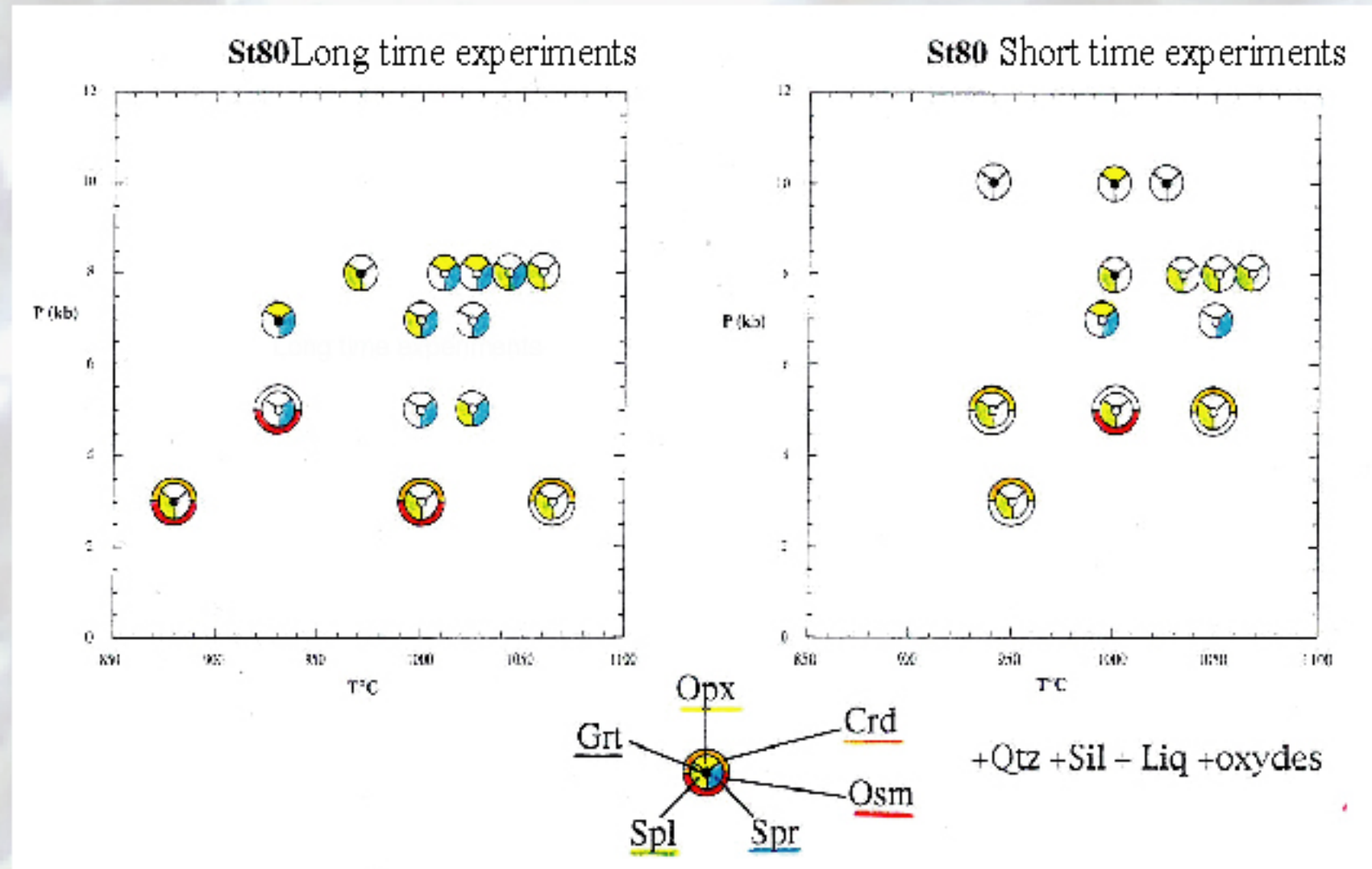
Starting material:

Qtz-Grt-Sil-Kf±Pl±Bt±Rt

Nom Echant.	STR-80	Run	P (bars)	T (°C)	Duration (days)	Melt	Qz	Sil	Minerals (o. inclusions; - : rare)										notes
									Ti-Mag	Ilm	Spl	Spr	Grt	Opx	Crd	Osm	KFsp	Pl	
SiO2 %	58,37	A111	8000	970	13 d.		+	+	+		+		+				+		no Melt
Al2O3 %	21,26			1025		+	+	+	+		o	+		+					Spl included in Opx and Spr
Fe2O3 %	10,85	A119	7000	995	7 d.		+	+	+		o	+		+					Spl included in Spr
MgO %	3,31			1050		+	+	+	+		o	+		+					Spl included in Spr and Qz
CaO %	0,57	A154	7000	930	13 d.		+	+	+		o	+		+					Spl incl. in Spr, zones a Spr/Spl/Spr+Spr
Na2O %	0,92			1000		+	+	+	+		o	+		+					Spl included in Spr
K2O %	2,50	A155	5000	930	18 d.		+	+	+		o	+		+					few melt
TiO2 %	1,47			1000		+	+	+	+		o	+		+					Spl included in Sil and Qz
MnO %	0,10	A158	3000	880	14 d.		+	+	+		o	+		+					Spl incl. in Spr, zones a Spr/Spl/Spr+Spr
P2O5 %	0,07			1000		+	+	+	+		o	+		+					Qz, Sil, oxides, Spl included in Crd
Ba %	0,0625	A161	10000	940	4 d.		+	+	+		o	+		+					Qz, Sil, oxides, Spl included in Crd
Sr %	0,0119			1000		+	+	+	+		o	+		+					Qz, Sil, oxides, Spl included in Crd
H2O+ %	0,03			1025		+	+	+	+		o	+		+					
H2O- %	0,18	A107	8000	1000	7 d.		+	+	+		o	+		+					
Total %	99,71			1055		+	+	+	+		o	+		+					
				1060		+	+	+	+		o	+		+					
		PC1-91-16	8000	1035	7 d.		+	+	+		o	+		+					
		PC1-91-20	8000	1035	14 d.		+	+	+		o	+		+					
		A167	5000	940	5 d.		+	+	+		o	+		+					
				1000		+	+	+	+		o	+		+					
				1050		+	+	+	+		o	+		+					
		A116	3000	950	4 d.		+	+	+		o	+		+					Qz, Sil, Spl, oxides included in Crd

The P and T intervals considered during these experiments were 0.3-1.0GPa and 950-1050°C; their duration lasted between 4 and 14 days.

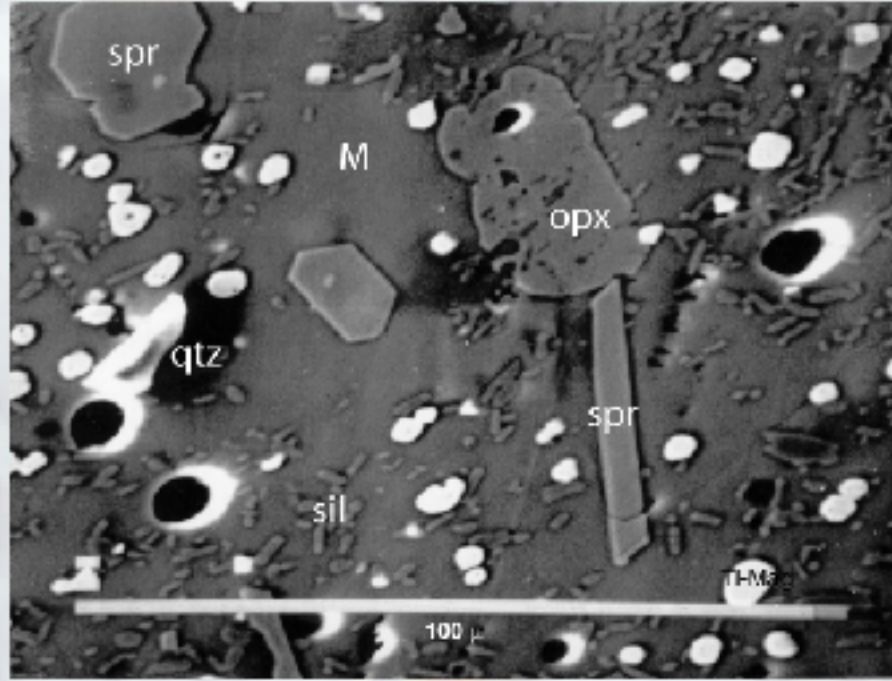
Between 0.8-0.6 GPa, the paragenesis is dependent on the duration of the run. For the long-time experiments, the paragenesis is Spr-Qz-Sil - with or without Opx -TiMag-Melt. Grt is present at T less than about 950°C. For short-duration experiments (same, P, T, and X), the paragenesis is Spl-Qz-Sil-TiMag-Melt.



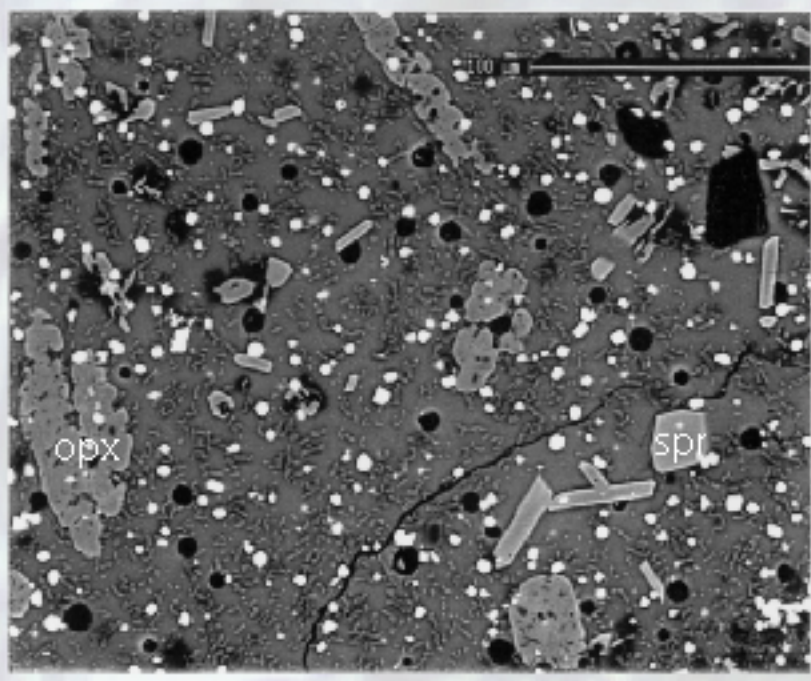
At 0.3GPa, the stable assemblage is Spl-Qz-Sil-TiMag-Ilm-Melt-Crd and/or Osm and Grt at T>900°C, whatever the duration of the experiment.

At 1.0GPa, the stable assemblage is Grt-Qz-Sil-oxides (-sometimes Opx and Fsp).

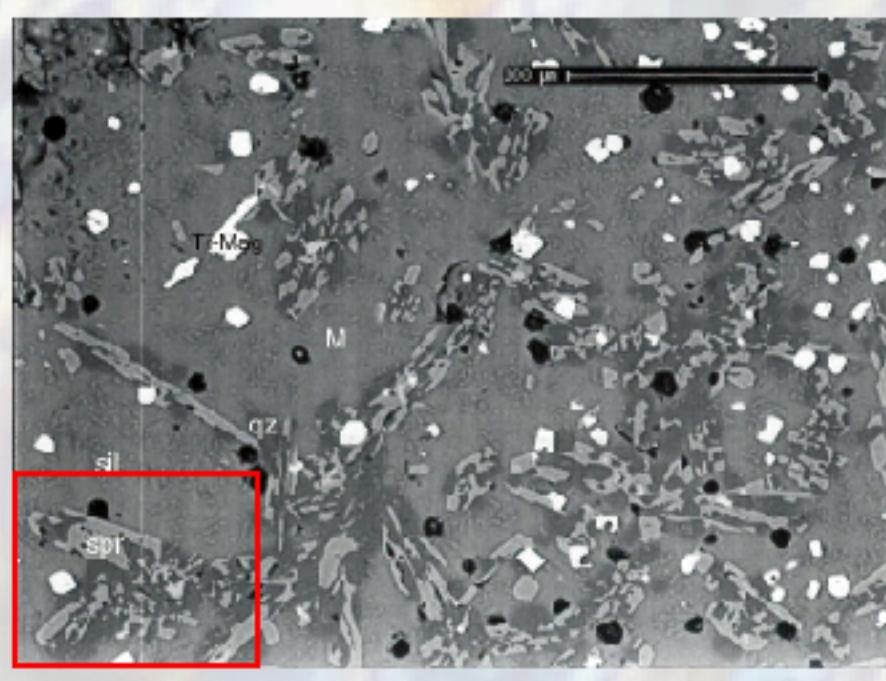
## BSE images of different experimental products



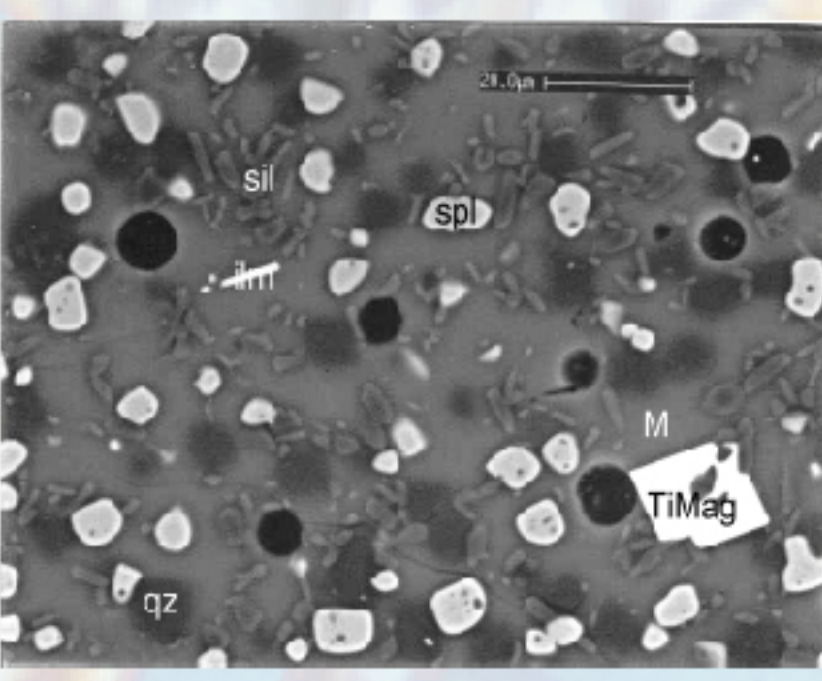
A111-1025°C-8kb-13d.  
Qtz-Spr-Sil-Opx-(Spl)-TiMag-M



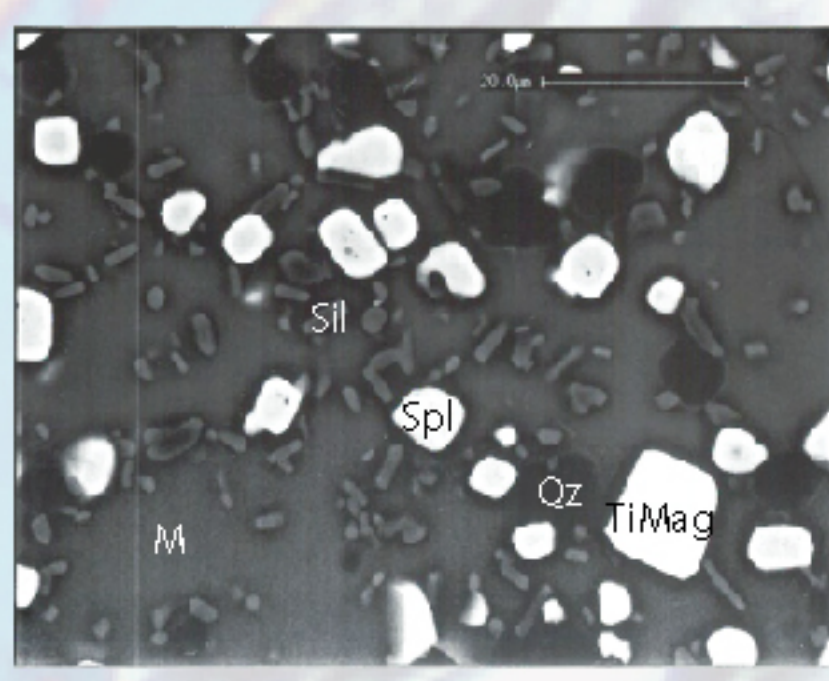
A111-1035°C-8kb-13d.  
Qtz-Spr-Sil-Opx-(Spl)-TiMag-M



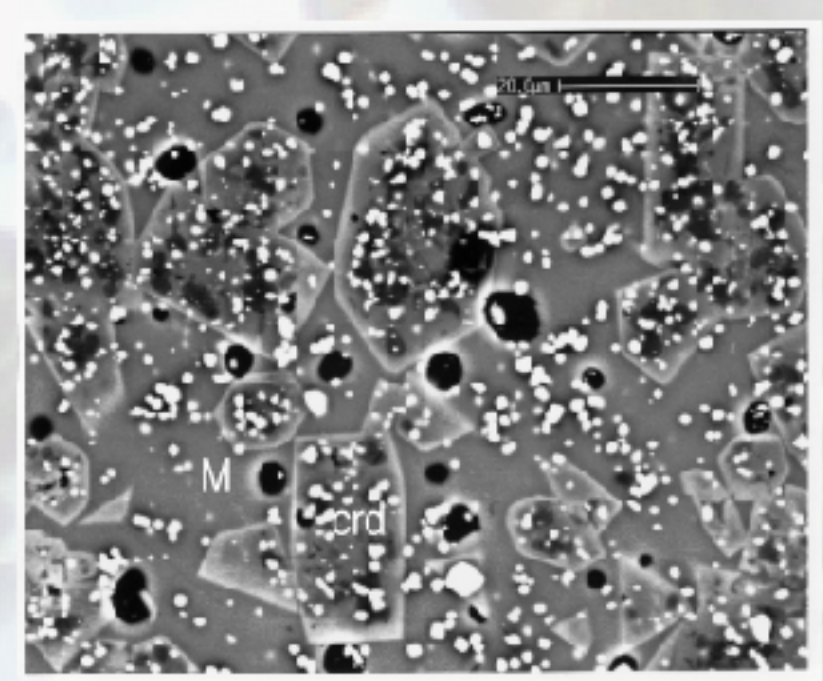
A104-1035°C-8kb-13d.  
Qtz-Spr-Sil-(Spl)-TiMag-M



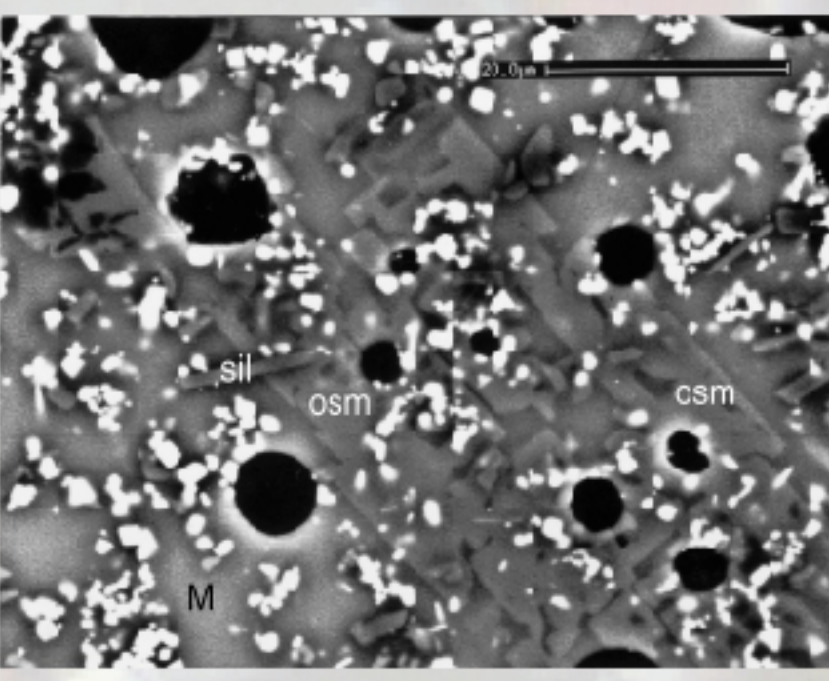
PC1-91-20-1035°C-8kb-14d.  
Qtz-Spl-Sil-Ilm-TiMag-M



A107-1055°C-8kb-7d.  
Qtz-Spl-Sil-Ilm-TiMag-M



A116-950°C-3kb-4d.  
Qtz-Crd-(Sil)-Spl-TiMag-M



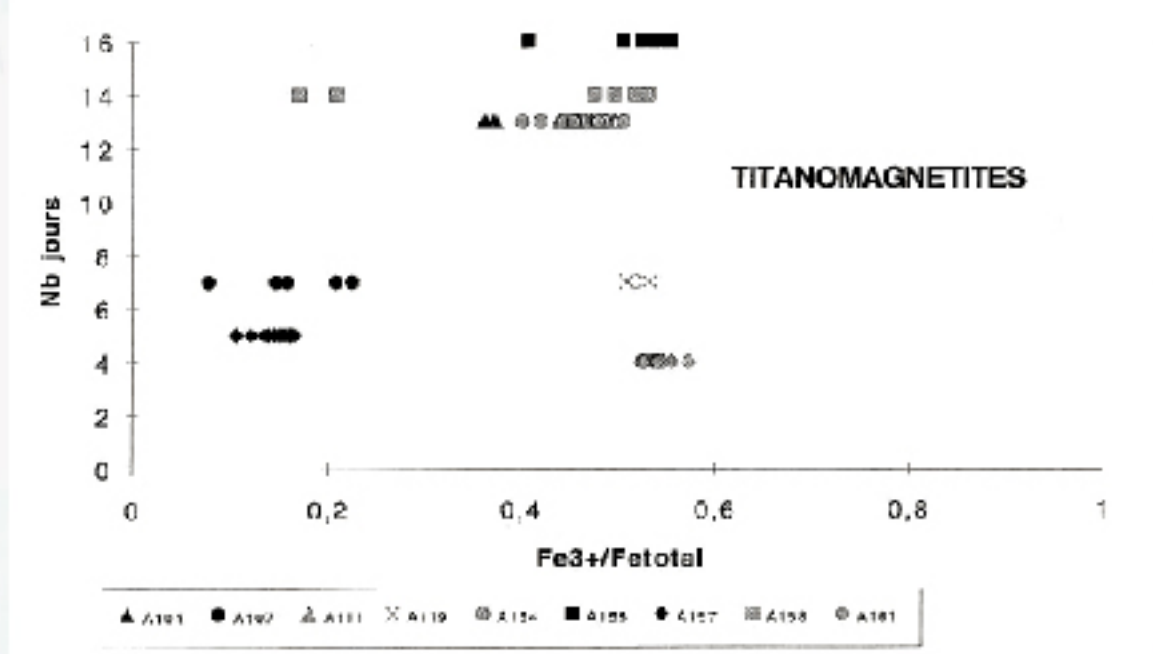
A158-1000°C-3kb-14d.  
Qtz-Osm-Crd- Sil-Spl-TiMag-Ilm-M

## Influence of the redox state :

There is a clear relationship between mineralogical assemblages (Spr + Qz or Spl + Qz) and the duration of the experiment conducted in an internally-heated pressure vessel. Similarly, oxidation conditions prevailing during a run is also function of the duration of the experiment as demonstrated by the composition of some minerals.

This is the case of spinel and especially titanomagnetite (see figure on right). We ascribe this increase in the oxidation state along time, due to progressive loss of hydrogen during the experiments at very high temperatures through the gold capsule.

It should be noted that in piston cylinder experiments (PC1-91-xx) the duration of the experiment had no influence on the oxidation state and the nature of the mineralogical assemblage, probably because  $f(O_2)$  was buffered by the graphite furnace surrounding the capsule.

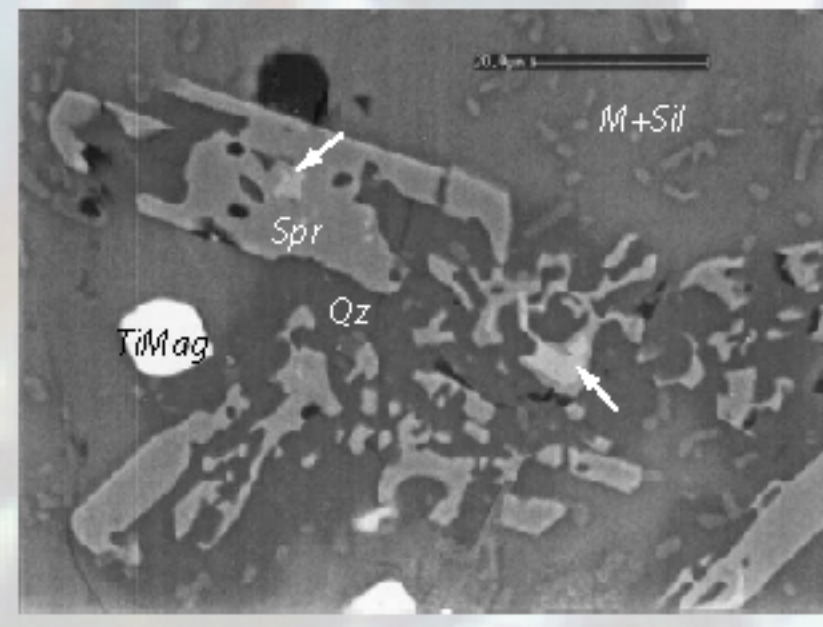


Fe3+/Total Fe versus Duration of the experiments of the Ti Magnetite (Fe3+ calculated by mass balance)

Spl + Spr is observed in run A154;

Spl is sometimes included in Spr (figure on right), Sil and Opx.

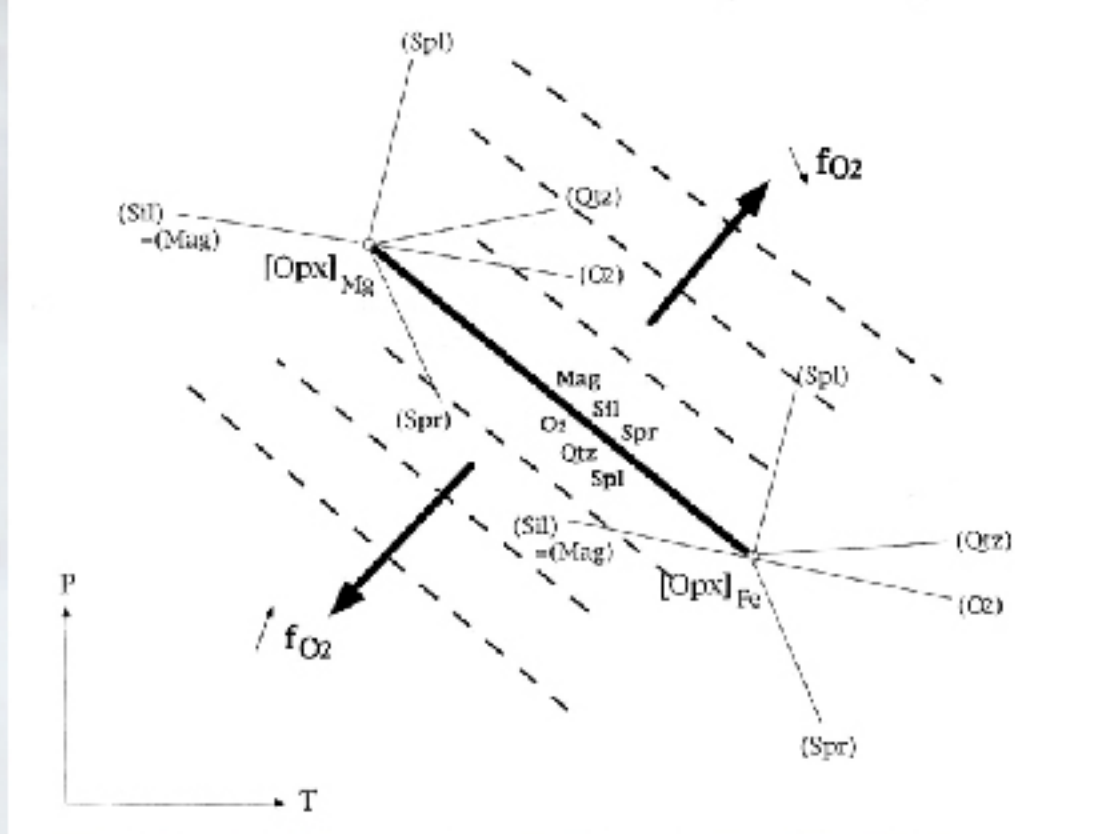
This suggests a gradual transformation over time of Spl + Qz assemblage (in short-duration experiments and reduced conditions) to Spr + Qz assemblages (in long-duration experiments and oxidized conditions.)



Enlargement of fig. A104 (above) showing Spl included in Spr (arrows)

Phase relations in the system FeO-MgO-Al<sub>2</sub>O<sub>3</sub>-SiO<sub>2</sub>-O allow writing the reaction:

$Spl + Qz + O_2 = Spr + Qz + Mag.$   
This reaction moves toward high pressures when  $f(O_2)$  which increases the Spl+Qz stability field.



**In Conclusion,** our experiments show that UHT conditions applied to a restite from the lower crust produce parageneses typical of UHT metamorphism. These results strengthen our interpretation that the short-lived Eocene UHT metamorphism of the Gruf complex developed on a Hercynian refractory lower crust formed by crustal differentiation.

These experiments also suggest that, under similar P-T conditions, Spl-Qz assemblages are indicative of reducing conditions while Spr-Qz assemblages prevail under more oxidised conditions.

