



HAL
open science

Unusual Facial “Acne”: A Quiz

Aurélie Du-Thanh, Eric Frouin, Luc Durand, Valérie Costes, Olivier Dereure

► **To cite this version:**

Aurélie Du-Thanh, Eric Frouin, Luc Durand, Valérie Costes, Olivier Dereure. Unusual Facial “Acne”: A Quiz. *Acta Dermato-Venereologica*, 2017, 97 (3), pp.414 - 415. 10.2340/00015555-2538 . hal-01809323

HAL Id: hal-01809323

<https://hal.science/hal-01809323>

Submitted on 16 Jan 2019

HAL is a multi-disciplinary open access archive for the deposit and dissemination of scientific research documents, whether they are published or not. The documents may come from teaching and research institutions in France or abroad, or from public or private research centers.

L'archive ouverte pluridisciplinaire **HAL**, est destinée au dépôt et à la diffusion de documents scientifiques de niveau recherche, publiés ou non, émanant des établissements d'enseignement et de recherche français ou étrangers, des laboratoires publics ou privés.

Unusual Facial “Acne”: A Quiz

Aur lie DU-THANH¹, Eric FROUIN², Luc DURAND², Val rie COSTES² and Olivier DEREURE¹

¹Department of Dermatology, and ²Laboratory of Pathology, University of Montpellier, H pital Saint-Eloi, 80 avenue Augustin Fliche, FR-34295 Montpellier Cedex 5, France. E-mail: a-du_thanh@chu-montpellier.fr

A 31-year-old woman was investigated for multiple, slightly erythematous or flesh-coloured, firm, asymptomatic papules, a few mm in diameter, located exclusively on the chin and the lower part of both cheeks (**Fig. 1a**). These elements had gradually emerged over the 2 previous years and were initially considered and treated unsuccessfully as retentional acne. Physical examination was otherwise unremarkable and the general status of the patient was excellent. Histo-

logical examination of a papule displayed a multi-nodular lymphocytic infiltrate of moderate density involving the upper and medium dermis that was well-limited laterally (**Fig. 1b**). Standard laboratory investigations and routine serologies, including serological diagnosis of *Borrelia*, were normal or negative. Computed tomography (CT) scan of the chest, abdomen and pelvis was unremarkable.

What is your diagnosis? See next page for answer.

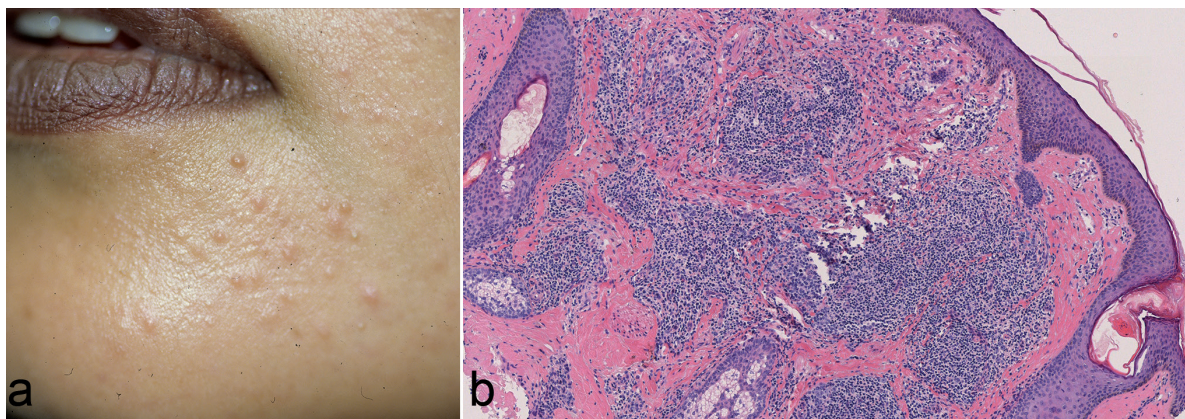


Fig. 1. Clinical and histological features. (a) Multiple, small-sized papules of the lower part of the face with chronic evolution. (b) multi-nodular dermal infiltrate of moderate density involving the upper and medium dermis with reactive germinal centre-like structures (Haematoxylin-eosin $\times 5$).

ANSWERS TO QUIZ

Unusual Facial "Acne": A Commentary

Acta Derm Venereol 2017; 97: 414–415.

Diagnosis: Primary cutaneous marginal zone B-cell lymphoma (PCMZL)

On immunostaining, the infiltrate consisted mainly of Bcl2⁺ B lymphocytes with reactive germinal centre-like structures admixed with a relatively abundant contingent of associated T cells (**Fig. 2**). Plasma cells displaying a monotypic lambda light chain were scattered especially on the margins of the nodules. Cutaneous clonality could not be accurately investigated on formaldehyde-fixed, paraffin-embedded sample, but there was no dominant B-cell population in peripheral blood. In a homogeneous series of 18, mainly female patients, a particular clinical form of primary cutaneous B-cell lymphoma, called primary cutaneous follicle center lymphoma (PCFCL), miliary- or agminated-type was recently described as a stereotyp picture of scattered or grouped elements of small, firm and multiple erythematous papules, mainly involving the neck and face (forehead and cheeks) (1). Although clinically unusual, this specific variant seems to retain the general histological pattern of PCFCL and its indolent outcome with no extracutaneous disease or disease-related death during follow-up. The clinical pattern of facial lesions in the patient described here is very close to those reported in this series, with multiple, firm and slightly erythematous small papules of chronic evolution involving exclusively in the lower part of the face; however, with a different histopathological pattern finally diagnosed as PCMZL. From the same perspective, Barzilai et al. (2) recently reported a series of 12 patients

with primary cutaneous B-cell lymphoma including both PCFCL and PCMZL presenting with small papules and nodules on the face (nose, cheeks and periocular areas) mimicking granulomatous rosacea, phymatous rosacea or a combination of both. Thus, it is likely that both main subsets of indolent primary cutaneous B-cell lymphoma can present with this quite misleading clinical pattern.

This peculiar presentation is a significant diagnostic challenge and represents a clinical pitfall. Indeed, differential diagnosis is broad and encompasses numerous inflammatory skin conditions involving the face and presenting with papules of chronic evolution, such as acne, rosacea, folliculitis of various origins, lupus miliaris disseminatus faciei, and papular sarcoidosis, among others. In no case, including ours, was the diagnosis of lymphoma initially proposed, and all of these patients received unsuccessful treatment before a biopsy was finally performed and enabled the correct diagnosis. The diagnosis is often delayed, as a consequence; by 2 years in our patient. As an additional difficulty, a reactive lymphoid hyperplasia or a pseudolymphoma with follicular pattern may be difficult to rule out with certainty due to the relative lack of conclusive, most particularly, structural clues on these small lesions displaying a space-limited infiltrate. Moreover, a marked plasmacytic differentiation and/or a prominent T-cell component, as in our case, may obscure the neoplastic B cells and lead to misdiagnosis (3, 4). Thus, sequential biopsies may prove necessary before a definite diagnosis can be established in these lesions displaying an unusual and misleading pattern. Repeated attempts at systemic treatment (amoxicillin, tetracyclines and hydroxychloroquine) proved ineffective and the patient declined the offer of treatment with thalidomide.

The authors declare no conflicts of interest.

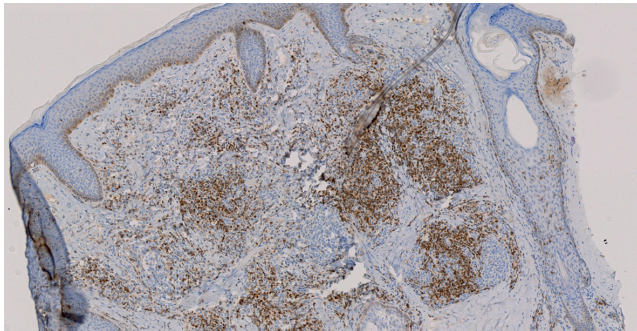


Fig. 2. Immunophenotyping of skin biopsy showing dominant bcl2+ staining of lymphocytes in the dermal infiltrate (Haematoxylin-eosin ×5).

REFERENCES

1. Massone C, Fink-Puches R, Laimer M, Rütten A, Vale E, Cerioni L. Miliary and agminated-type primary cutaneous follicle center lymphoma: report of 18 cases. *J Am Acad Dermatol* 2011; 65: 749–755.
2. Barzilai A, Feuerman H, Quaglino P, David M, Feinmesser M, Halpern M, et al. Cutaneous B-cell neoplasms mimicking granulomatous rosacea or rhinophyma. *Arch Dermatol* 2012; 148: 824–831.
3. Geyer JT, Ferry JA, Longtine JA, Flotte TJ, Harris NL, Zukerberg LR. Characteristics of cutaneous marginal zone lymphomas with marked plasmacytic differentiation and a T cell-rich background. *Am J Clin Pathol* 2010; 133: 59–69.
4. Dalle S, Thomas L, Balme B, Dumontet C, Thieblemont C. Primary cutaneous marginal zone lymphoma. *Crit Rev Oncol Hematol* 2010; 74: 156–162.