



**HAL**  
open science

## On the similarity and apparent cycles of isotopic variations in East Antarctic snow pits

Thomas Laepple, Thomas Munch, Mathieu Casado, Maria Hoerhold, Amaelle Landais, Sepp Kipfstuhl

► **To cite this version:**

Thomas Laepple, Thomas Munch, Mathieu Casado, Maria Hoerhold, Amaelle Landais, et al.. On the similarity and apparent cycles of isotopic variations in East Antarctic snow pits. *The Cryosphere*, 2018, 12 (1), pp.169 - 187. 10.5194/tc-12-169-2018 . hal-01806796

**HAL Id: hal-01806796**

**<https://hal.science/hal-01806796>**

Submitted on 16 Sep 2020

**HAL** is a multi-disciplinary open access archive for the deposit and dissemination of scientific research documents, whether they are published or not. The documents may come from teaching and research institutions in France or abroad, or from public or private research centers.

L'archive ouverte pluridisciplinaire **HAL**, est destinée au dépôt et à la diffusion de documents scientifiques de niveau recherche, publiés ou non, émanant des établissements d'enseignement et de recherche français ou étrangers, des laboratoires publics ou privés.



# On the similarity and apparent cycles of isotopic variations in East Antarctic snow pits

Thomas Laepple<sup>1</sup>, Thomas Münch<sup>1,2</sup>, Mathieu Casado<sup>3</sup>, Maria Hoerhold<sup>4</sup>, Amaelle Landais<sup>3</sup>, and Sepp Kipfstuhl<sup>4</sup>

<sup>1</sup>Alfred Wegener Institute Helmholtz Centre for Polar and Marine Research, Telegrafenberg A43, 14473 Potsdam, Germany

<sup>2</sup>Institute of Physics and Astronomy, University of Potsdam, Karl-Liebknecht-Str. 24/25, 14476 Potsdam, Germany

<sup>3</sup>Laboratoire des Sciences du Climat et de l'Environnement – IPSL, UMR 8212, CEA-CNRS-UVSQ, Gif-sur-Yvette, France

<sup>4</sup>Alfred Wegener Institute Helmholtz Centre for Polar and Marine Research, Am Alten Hafen 26, 27568 Bremerhaven, Germany

**Correspondence:** Thomas Laepple (thomas.laepple@awi.de)

Received: 6 September 2017 – Discussion started: 11 September 2017

Revised: 22 November 2017 – Accepted: 27 November 2017 – Published: 17 January 2018

**Abstract.** Stable isotope ratios  $\delta^{18}\text{O}$  and  $\delta\text{D}$  in polar ice provide a wealth of information about past climate evolution. Snow-pit studies allow us to relate observed weather and climate conditions to the measured isotope variations in the snow. They therefore offer the possibility to test our understanding of how isotope signals are formed and stored in firn and ice. As  $\delta^{18}\text{O}$  and  $\delta\text{D}$  in the snowfall are strongly correlated to air temperature, isotopes in the near-surface snow are thought to record the seasonal cycle at a given site. Accordingly, the number of seasonal cycles observed over a given depth should depend on the accumulation rate of snow. However, snow-pit studies from different accumulation conditions in East Antarctica reported similar isotopic variability and comparable apparent cycles in the  $\delta^{18}\text{O}$  and  $\delta\text{D}$  profiles with typical wavelengths of  $\sim 20$  cm. These observations are unexpected as the accumulation rates strongly differ between the sites, ranging from 20 to 80 mm w.e.  $\text{yr}^{-1}$  ( $\sim 6$ –21 cm of snow per year). Various mechanisms have been proposed to explain the isotopic variations individually at each site; however, none of these are consistent with the similarity of the different profiles independent of the local accumulation conditions.

Here, we systematically analyse the properties and origins of  $\delta^{18}\text{O}$  and  $\delta\text{D}$  variations in high-resolution firn profiles from eight East Antarctic sites. First, we confirm the suggested cycle length (mean distance between peaks) of  $\sim 20$  cm by counting the isotopic maxima. Spectral analysis further shows a strong similarity between the sites but indicates no dominant periodic features. Furthermore, the appar-

ent cycle length increases with depth for most East Antarctic sites, which is inconsistent with burial and compression of a regular seasonal cycle. We show that these results can be explained by isotopic diffusion acting on a noise-dominated isotope signal. The firn diffusion length is rather stable across the Antarctic Plateau and thus leads to similar power spectral densities of the isotopic variations. This in turn implies a similar distance between isotopic maxima in the firn profiles.

Our results explain a large set of observations discussed in the literature, providing a simple explanation for the interpretation of apparent cycles in shallow isotope records, without invoking complex mechanisms. Finally, the results underline previous suggestions that isotope signals in single ice cores from low-accumulation regions have a small signal-to-noise ratio and thus likely do not allow the reconstruction of inter-annual to decadal climate variations.

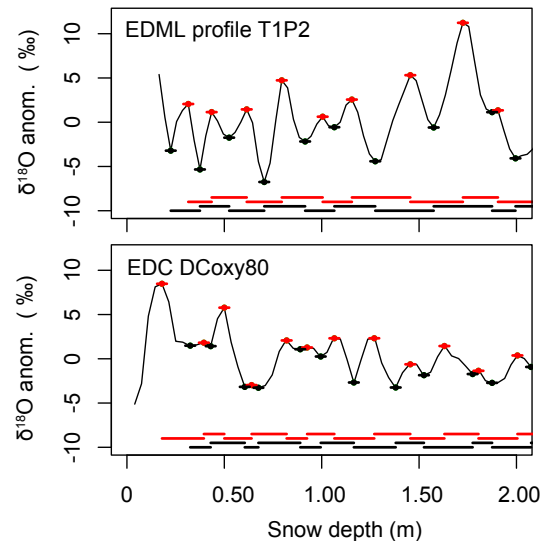
## 1 Introduction

Stable isotope  $\delta^{18}\text{O}$  and  $\delta\text{D}$  records from ice cores can be used to infer past local temperature variations (Dansgaard, 1964) and as such are an important climate proxy at inter-annual to glacial–interglacial timescales (Jouzel et al., 2007; Johnsen et al., 2001). The ice thickness and accumulation rate affect the temporal scale and resolution of the climate reconstructions that can be obtained from a given ice core. In central East Antarctica, low accumulation rates and deep ice cores allow climate reconstructions to be made that cover

the last 800 000 years (EPICA community members, 2004), while the higher accumulation rates in coastal areas allow for higher-resolution reconstructions in which the seasonal climate signal can be recovered from the ice isotopic composition (Morgan, 1985; Masson-Delmotte et al., 2003; van Ommen and Morgan, 1997; Küttel et al., 2012).

High-resolution isotope data, thought to correspond to subannual variations, are now routinely measured at deep ice-core sites (Gkinis et al., 2011); however, it is unclear to what extent isotope signals on timescales shorter than multidecadal can be interpreted as indicating climate (Ekaykin et al., 2002; Baroni et al., 2011; Pol et al., 2014; Münch et al., 2016), especially for the low-accumulation regions that are typical on the Antarctic Plateau ( $< 100 \text{ mm w.e. yr}^{-1}$ ). As the link is complex between isotopic composition and the climatic conditions creating them (Jouzel et al., 1997), numerous studies have sampled the upper metres of firn in order to compare the isotopic variations with instrumental climate data (Masson-Delmotte et al., 2008; Fernandez et al., 2010; Steen-Larsen et al., 2014). Many of these have reported oscillations in snow-pit records from the Antarctic Plateau, including those at Vostok, Dome C (EDC), Dome A, Dome F (DF), South Pole (SP) and Kohnen Station at the EPICA Dronning Maud Land drilling site (EDML) (Jouzel et al., 1983; Petit et al., 1982; Ekaykin et al., 2002; Hoshina et al., 2014, 2016; Münch et al., 2016). Interestingly, despite the very different accumulation rates at these sites, which range from 6 to 21 cm of snow per year, their isotope profiles appear to have very similar peak-to-peak distances (Fig. 1), and a recent systematic counting effort of isotopic maxima in firn profiles (Casado et al., 2017) suggested a characteristic wavelength of 15–25 cm across all analysed East Antarctic sites.

For sites such as EDML and SP, their apparent cycle lengths match well with their annual snow layer thicknesses and consequently their cycles have been explained as reflecting seasonal climate variation (Oerter et al., 2004; Münch et al., 2016; Jouzel et al., 1983; Whitlow et al., 1992). However, this explanation is not consistent with the same cycle length being observed at lower accumulation sites, where the annual snow layer thickness is often less than 10 cm (Petit et al., 1982). Instead, a range of alternative explanations have been proposed for the oscillations at individual sites. At Vostok, Ekaykin et al. (2002) attributed the oscillations to horizontally moving dunes (Frezzotti et al., 2002) leading to isotopic cycles during burial. However, similar cycles are found at core sites with different dune features, wind speeds and accumulation rates, and thus a varying speed of dune movement and burial. At EDC, Petit et al. (1982) explained the mismatch between seasonal and isotopic cycles as being due to missing years resulting from the combined effects of successive precipitation-free months, erosion associated with blowing snow and firn diffusion. In a multi-site study, Hoshina et al. (2014, 2016) suggested that the multi-year oscillations could be formed by the combination of variable accumula-



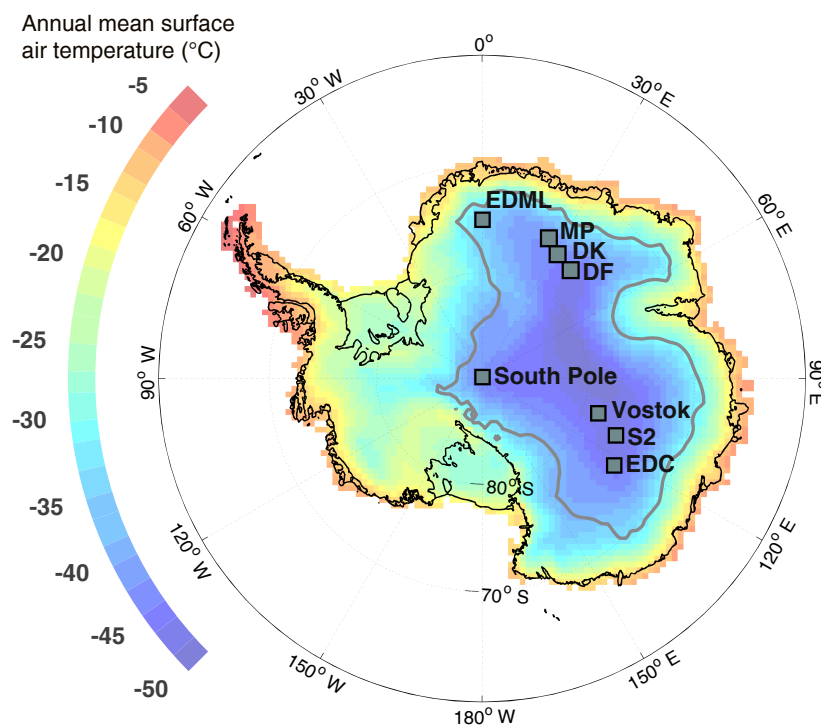
**Figure 1.** Example isotope profiles from EDML and EDC. Both profiles are visually similar despite the differing time periods covered,  $\sim 10$  yr for EDML and  $\sim 25$  yr for EDC, and annual snow layer thicknesses,  $\sim 21$  cm for EDML and  $\sim 8$  cm for EDC. Also shown is an example of the automatic estimation of isotopic cycle length. Red and black dots show the identified maxima and minima. The short horizontal lines overlaying these dots indicate the  $\pm 6$  cm region a maximum (minimum) must be above (below) to be identified as an extremum. The longer black and red horizontal lines at the bottom of the figure indicate the identified distances between subsequent maxima or minima. For more examples of isotope profiles see Casado et al. (2017).

tion and post-depositional modifications, such as ventilation. Finally, the coarse sampling resolution in some studies (5 cm or longer) would not resolve the seasonal cycle, but similar characteristics were found for profiles sampled at a range of resolutions (Ekaykin et al., 2002). Thus, none of the existing interpretations explain why the apparent observed cycles are so similar across sites and largely independent of the accumulation rate and related climatic conditions.

Here we combine a statistical analysis of isotope profiles from eight Antarctic Plateau sites with theoretical considerations and numerical simulations of the firn signal. We suggest that the presence of apparent cycles in the firn, and their largely invariant length, can be explained by a combination of deposition-related noise in the surface isotope signal and isotopic diffusion (Johnsen et al., 2000), which is rather constant across the Antarctic Plateau.

## 2 Data and methods

We first introduce the data set and the method used to compare the power spectral density of observed isotope profiles with those from a null model of diffused noise. We then provide an analytic solution for the expected distance between



**Figure 2.** Location of the sampling sites used in this study (solid squares). The 2500 m a.s.l. elevation contour is marked by a grey line; colours indicate the annual mean surface air temperature (Nicolas and Bromwich, 2014).

isotopic maxima (“cycle length”) and a method to estimate this cycle length from the observed firn profiles. Finally we provide a minimal numerical forward model for the isotopic variations.

## 2.1 Data

We analyse data from eight sites on the Antarctic Plateau, for which vertical isotope profiles of  $\delta^{18}\text{O}$  or  $\delta\text{D}$  are available with lengths of at least 2 m and minimum resolutions of 3.5 cm per sample (Fig. 2 and Table 1; Münch et al., 2017b; Laepple et al., 2017). We focus our analysis on the upper 4 m of firn within which cycles have been described and interpreted. For SP and EDML, a combination of snow-pit and shallow firn-core data allows us to extend the analysis down to a snow depth of 18 m. All records have been published (Table 1), except those for EDML for which we use 22 3.4 m deep profiles sampled from snow trenches (T15) as described and partly analysed in Münch et al. (2017a), together with new isotope data from the firn cores B41 and B50. These two cores were drilled close to Kohnen Station in 2012–13, approximately 1 km apart (Alfred-Wegener-Institut Helmholtz-Zentrum für Polar- und Meeresforschung, 2016). Isotope ratios were analysed at a resolution of 3 cm, using a laser instrument at the Alfred Wegener Institute (AWI) in Bremerhaven and following the protocol described in Masson-Delmotte et al. (2015).

## 2.2 Spectral analysis

Spectra are estimated using Thomson’s multitaper method with three windows (Percival and Walden, 1993). The depth profiles are linearly detrended before analysis. For profiles with non-equidistant sampling, the data are interpolated to the lowest resolution after low-pass filtering to avoid aliasing effects as described in Laepple and Huybers (2013). In the case of multiple profiles at a single site we show the mean of the individual spectra.

Significance testing of the power spectral density is performed against a null hypothesis of noise affected by firn diffusion. More specifically, we assume the sum of white (temporally independent) noise subject to isotopic diffusion with a depth-dependent diffusion length and additive white measurement noise. The diffusion length is calculated using the site-specific accumulation rates as well as temperature and density profiles as described in Sect. 2.5. There is no simple closed form expression for the power spectrum of a diffused signal under varying diffusion lengths. We thus resort to a Monte Carlo procedure by simulating diffused white noise profiles on a 2 mm resolution, resampling them to the actual resolution of the observed profiles to include the effect of discrete sampling, adding measurement noise and then estimating the spectra on these surrogate data sets using the same method as for the observed profiles. The variance of the diffused white noise signal and the measurement noise are free

**Table 1.** Summary of the drilling and snow-pit sites used in this study. For each site we list latitude, longitude and elevation a.s.l. and for each corresponding record its name, the analysed depth, sampling resolution, measured proxy and original data reference. Some profiles have single missing measurements that are not included in the provided sampling resolution. The 35 missing  $\delta^{18}\text{O}$  samples in DCoxy80 were filled by linear regression to  $\delta\text{D}$ . For SP,  $\delta\text{D}$  was converted to  $\delta^{18}\text{O}$  using a slope of 8 to get a complete  $\delta^{18}\text{O}$  data set.

Site	Lat. °N	Long. °E	Elevation m a.s.l.	Name	Depth m	Resolution cm	Proxy	Reference
Vostok	−78.5	106.8	3488	VK14	2.5	2	$\delta^{18}\text{O}$ , $\delta\text{D}$	(Ekaykin et al., 2002)
				ST61	3.1	2	$\delta^{18}\text{O}$ , $\delta\text{D}$	(Ekaykin et al., 2002)
				ST73	3.1	2	$\delta^{18}\text{O}$ , $\delta\text{D}$	(Ekaykin et al., 2002)
				ST30	3	2.0–3.5	$\delta^{18}\text{O}$ , $\delta\text{D}$	(Ekaykin et al., 2002)
				VK56	3	3	$\delta^{18}\text{O}$ , $\delta\text{D}$	(Touzeau et al., 2016)
EDC	−75.1	123.3	3233	DCoxy5	2	1–2	$\delta^{18}\text{O}^c$ , $\delta\text{D}$	(Casado et al., 2017)
				DCoxy80	2.5	3.3–3.6	$\delta^{18}\text{O}$ , $\delta\text{D}$	(Casado et al., 2017)
				Vanish12	2	3	$\delta^{18}\text{O}$ , $\delta\text{D}$	(Touzeau et al., 2016)
DF	−77.3	39.7	3810	DF	4	2	$\delta^{18}\text{O}$ , $\delta\text{D}$	(Hoshina et al., 2014)
DK	−76.8	31.8	3733	DK	2	2	$\delta^{18}\text{O}$ , $\delta\text{D}$	(Hoshina et al., 2014)
S2	−76.3	120.0	3229	S2	3	2.9–3.0	$\delta^{18}\text{O}$ , $\delta\text{D}$	(Touzeau et al., 2016)
MP	−74.0	43.0	3656	MP	4	2	$\delta^{18}\text{O}$ , $\delta\text{D}$	(Hoshina et al., 2014)
EDML	−75.0	0.1	2892	T15 (22 profiles)	3.4	2.2–3.0	$\delta^{18}\text{O}$ , $\delta\text{D}$	(Münch et al., 2017a) + this study
				B41	12 <sup>a</sup>	2	$\delta^{18}\text{O}$ , $\delta\text{D}$	this study
				B50	12 <sup>a</sup>	2	$\delta^{18}\text{O}$ , $\delta\text{D}$	this study
SP	−90.0	0.0	2835	SP78P	10	2	$\delta^{18}\text{O}^d$ , $\delta\text{D}$	(Jouzel et al., 1983)
				SP78C	17.9 <sup>b</sup>	1.9–2.5	$\delta\text{D}$	(Jouzel et al., 1983)
				SP92	6	0.9–1.4	$\delta^{18}\text{O}$	(Whitlow et al., 1992)

<sup>a</sup> Top 3 m removed from analysis due to bad core quality. <sup>b</sup> No data available for first 9.6 m. <sup>c</sup> Incomplete. Missing values linearly interpolated. <sup>d</sup> Only 0–4.9 m depth.

parameters and are chosen to minimise the root-mean-square deviation of the observed and the null-hypothesis spectrum. Finally, we scale the null-hypothesis spectrum by the 95% quantiles of a  $\chi^2$  distribution to obtain critical significance levels. These mark the range of spectral power expected if the time series were diffused noise. This level has to be overcome for a peak to be locally (thus at a given frequency) significant. The degrees of freedom (DOF) of the  $\chi^2$  distribution are the product of the DOF from the spectral estimator and the effective number of independent profiles. We assume independence between profiles for all sites except for the EDML trench data. For this data set consisting of 22 nearby profiles that were sampled in a single season, we assume five effective DOF.

### 2.3 Rice’s formula for the expected number of local extrema

The “wiggleness” of time series, assuming a stationary random process, is determined by the first moments of the spectral density. This relationship, known as Rice’s formula (Rice, 1944, 1945), was shown to have important implications for interpreting paleoclimate records (Wunsch, 2006) and can be used to derive the expected number  $\mu$  of local ex-

trema (maxima and minima) per unit time. Specifically, for a stationary Gaussian process (e.g. Lindgren, 2012),  $\mu$  is

$$\mu_{\max} = \mu_{\min} = \frac{1}{2\pi} \sqrt{\frac{\Omega_4}{\Omega_2}}, \quad (1)$$

where  $\Omega_2$  and  $\Omega_4$  denote the second and the fourth moment of the spectral density of the Gaussian process.

A diffused white noise process has the power spectral density  $P_0 \exp(-\omega^2 \sigma^2)$  (van der Wel et al., 2015a), where  $P_0$  is the total power of the undiffused white noise,  $\sigma$  the diffusion length and  $\omega$  angular frequency. The second and fourth moments are  $\Omega_2 = \frac{\sqrt{\pi}}{4} \sigma^{-3}$  and  $\Omega_4 = \frac{3\sqrt{\pi}}{8} \sigma^{-5}$ . Thus, from Eq. (1) the average difference between two maxima is

$$\Delta z_{\max} = \frac{1}{\mu_{\max}} = 2\pi \sqrt{\frac{2}{3}} \sigma, \quad (2)$$

which is a linear function of the diffusion length  $\sigma$  – a remarkably simple relationship.

### 2.4 Automatic estimation of the isotopic cycle length and amplitude

To investigate the isotopic variations in a way similar to visual cycle counting (Casado et al., 2017), we use an auto-

matic procedure to identify the minima and maxima in isotope profiles. For the sake of simplicity we call the typical distance between subsequent maxima (or minima) cycle length, noting that this does not imply a periodicity that would appear as a peak in the power spectrum.

To improve robustness against measurement noise, we define a local maximum (or minimum) as that value of a profile which is above (or below) all other values within a window of  $\pm 6$  cm centred at the given point. This naturally limits the minimum possible cycle length to 6 cm; however, as the accumulation rates at our sites vary from 6 to 21 cm of snow per year, we expect that most cycles are longer than this and the results are thus insensitive to this choice. Since we apply the same method to the observations as well as to the simulations, their intercomparison is unbiased.

We determine all local extrema for each observed or simulated profile in the described manner and record the distances between subsequent extrema (i.e. the distances between two neighbouring maxima as well as between two neighbouring minima) as a function of depth (midpoint of depth between the two extrema, Fig. 1). We sort the recorded distances (cycle lengths) into depth range bins, e.g. 1.5–2 m depth, forming a distribution of distances for each specific bin. For the simulations, and also for several of our study sites, multiple profiles are available, allowing a better estimate of the cycle length as a function of depth to be made by binning the distances from multiple profiles together. The bin width is chosen as a trade-off between maximising the resolution and minimising the variance of the estimation. Specifically, we choose 1 m for sites with one or two profiles (S2, DF, DK, MP, SP, EDML below 3.4 m snow depth) and 0.5 m for sites with more than two profiles (EDC, Vostok and EDML above 3.4 m snow depth). For the resulting distributions, we report the mean and 2 standard errors ( $2 \times \text{se}$ ). To estimate the standard error, we assume independence of the profiles except for EDML, where we assume 5 effective DOF as in the spectral analysis.

## 2.5 Minimal forward model for vertical isotope profiles

As a tool to understand the observations, we construct the following minimalistic model to simulate artificial isotope profiles in the upper metres of Antarctic firn. We approximate the local climate conditions by the local near-surface air temperatures,  $T_{\text{air}}(t)$ , and assume that these shape the isotope signal of freshly formed snow,  $\delta^{18}\text{O}_{\text{snow}}(t)$ . Subsequently, the snow is transported to the surface by precipitation where it is redistributed and mixed by wind, giving rise to the surface isotope signal  $\delta^{18}\text{O}_{\text{surface}}(t)$ . Finally, the surface signal is buried in the firn column which is accompanied by diffusional smoothing of the signal and densification of the layers (Münch et al., 2017a). Analysing a snow pit or firn core during this process then represents a snapshot of the firn isotope signal  $\delta^{18}\text{O}_{\text{firn}}(z)$ . We describe the process here for  $\delta^{18}\text{O}$  but

the analogous approach also applies to  $\delta\text{D}$ . We will now discuss these steps in detail.

On monthly to multidecadal timescales, the local temperatures in Antarctica are dominated by the seasonal cycle. At our studied sites, the seasonal cycle explains more than 90 % of the variance in the temperature evolution of the last decades (ERA-Interim reanalysis; Dee et al., 2011) when evaluated on a monthly resolution and considering the first two harmonics of the seasonal cycle (Table 2). We therefore approximate the local climate conditions by parameterising the seasonal cycle in temperature as

$$T_{\text{air}}(t) = T_0 + A_1 \cos(\omega t + \phi_1) + A_2 \cos(2\omega t + \phi_2) + \epsilon_T. \quad (3)$$

Here,  $\omega$  is angular frequency,  $t$  time,  $T_0$  is annual mean temperature,  $A_1$ ,  $A_2$  and  $\phi_1$ ,  $\phi_2$  denote amplitude and phase of the first two harmonics of the seasonal cycle, and  $\epsilon_T$  is the remaining temperature variability. We estimate the parameters from temperature observations of nearby automatic weather stations (Table 2). For our study sites,  $\phi_1$  and  $\phi_2$  are small ( $< 5^\circ$ ) and are for simplicity set to zero. For converting the near-surface air temperatures into oxygen isotope ratios, we use the mean Antarctic spatial slope of  $\beta = 0.8 \text{‰}^\circ\text{C}^{-1}$  (Masson-Delmotte et al., 2008):

$$\delta^{18}\text{O}_{\text{snow}}(t) = \beta T_{\text{air}}(t) + \epsilon_\delta, \quad (4)$$

where  $\epsilon_\delta$  reflects the isotopic variability not captured by the linear relationship. We neglect the intercept of the calibration since the absolute isotope values have no influence on the results of our analyses and note that our results, except for the spectral comparison (Fig. 8), are independent of the amplitudes and thus the choice of the calibration. A strong temporal relationship has been confirmed between the seasonal cycle of local temperature and the stable isotope ratios measured in precipitation samples (Eq. 4) at several sites in East Antarctica (Fujita and Abe, 2006; Touzeau et al., 2016; Stenni et al., 2016) although the estimated slopes vary from 0.3 to  $1 \text{‰}^\circ\text{C}^{-1}$  between sites.

Going from the isotope signal in the snow to the surface signal, the variability of the seasonal cycle is affected by aliasing due to precipitation intermittency (Helsen et al., 2005; Sime et al., 2009; Laepple et al., 2011; Persson et al., 2011), by redistribution of snow (Fisher et al., 1985; Münch et al., 2016; Laepple et al., 2016) and by interannual variation in the accumulation rate and the accumulation seasonality (Cuffey and Steig, 1998). We note that exchange between atmospheric water vapour and the snow might further influence  $\delta^{18}\text{O}_{\text{surface}}$  (Steen-Larsen et al., 2014; Touzeau et al., 2016; Casado et al., 2017) and we do not account for these effects. However, even in this case, the variations in  $\delta^{18}\text{O}_{\text{surface}}$  might still follow the temperature variations. To a first approximation, precipitation intermittency, snow redistribution and interannual accumulation variability do not affect the total variance of the input signal but rather mainly redistribute its energy across frequencies, similar to the effect of aliasing (Kirchner, 2005). Thus, to simplify matters, we describe

**Table 2.** Meteorological conditions and model parameters at the study sites. Listed are the annual mean temperature ( $T_0$ ), amplitude of the first two harmonics of the seasonal cycle ( $A_1$ ,  $A_2$ ), annual mass accumulation rate ( $\dot{b}$ ), firm surface density ( $\rho_0$ ), average atmospheric pressure ( $P_0$ ) and fraction of variance in ERA-Interim monthly surface temperature explained by the seasonal cycle alone ( $F_{\text{seas}}$ ). If borehole temperature measurements exist, we use the 10 m firm temperature for  $T_0$  instead of air temperature observations, as they provide a more accurate estimate of the relevant temperature for the diffusion. If no temperature observation exists, the temperature from the nearest site was used by adding the temperature anomaly between the sites from reanalysis data (Dee et al., 2011).

Site	$T_0$ °C	$A_1$ °C	$A_2$ °C	$\dot{b}$ $\text{kg m}^{-2} \text{yr}^{-1}$	$\rho_0$ $\text{kg m}^{-3}$	$P_0$ mbar	$F_{\text{seas}}$ %
Vostok <sup>a</sup>	−57.0	16.7	6.6	21	350	624	97
S2 <sup>b</sup>	−55.1	17.4	6.3	21	350	642	97
EDC <sup>c</sup>	−54.9	17.4	6.3	27	350	642	95
DF <sup>d</sup>	−57.3	16.4	6.6	27.3	350	592	95
DK <sup>e</sup>	−53.1	16.7	6.6	35.5	368	592	94
MP <sup>f</sup>	−48.6	15.5	6.6	40.9	372	592	93
EDML <sup>g</sup>	−44.5	13.2	4.9	72	345	677	93
SP <sup>h</sup>	−50.8	15.7	6.4	80.0	350	682	95

<sup>a</sup> Ekaykin et al. (2002); Lefebvre et al. (2012). <sup>b</sup> Touzeau et al. (2016);  $A_1$ ,  $A_2$  and  $P_0$  adapted from EDC. <sup>c</sup> Touzeau et al. (2016). <sup>d</sup> Kameda et al. (2008). <sup>e</sup> Hoshina et al. (2014);  $A_1$ ,  $A_2$  and  $P_0$  adapted from DF. <sup>f</sup> Hoshina et al. (2014);  $A_1$ ,  $A_2$  and  $P_0$  adapted from DF. <sup>g</sup> EPICA community members (2006). <sup>h</sup> Casey et al. (2014).

the combination of these processes together with  $\epsilon_T$  and  $\epsilon_\delta$  by temporally independent (i.e. white) noise and set the variance of the total surface signal (seasonal cycle + noise) to the variance of the original seasonal cycle in the snow (Eq. 4). The choice of white noise is the simplest option here and the results are not sensitive to this assumption (Appendix A).

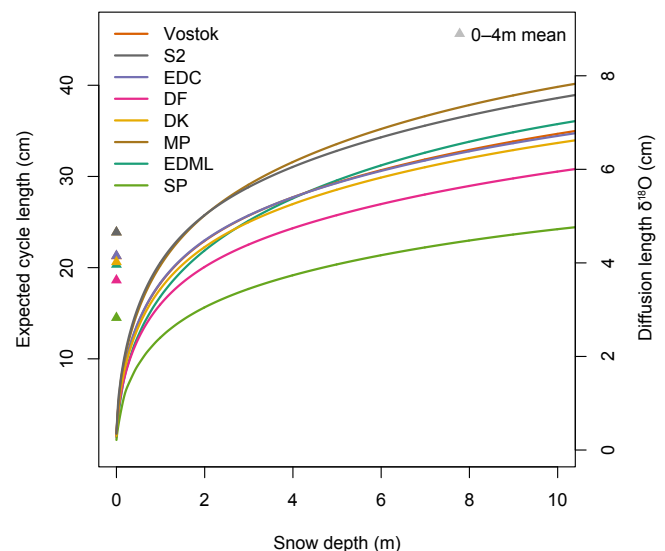
Our model for the isotopic surface signal then is

$$\delta^{18}\text{O}_{\text{surface}}(t) = \beta \left( (1 - \xi)^{1/2} T_{\text{air}}(t) + \xi^{1/2} \sigma_{T_{\text{air}}} \epsilon(t) \right), \quad (5)$$

where  $\sigma_{T_{\text{air}}}$  is the SD of the seasonal cycle in temperature (Eq. 3) and  $\epsilon(t)$  are independent normally distributed random variables (white noise) with zero mean and  $\text{SD} = 1$ . The parameter  $0 \leq \xi \leq 1$  determines the fraction of noise in the surface signal:  $\xi = 1$  represents the case of pure noise (completely reshuffled seasonal cycle) and  $\xi = 0$  the case of a fully preserved seasonal cycle.

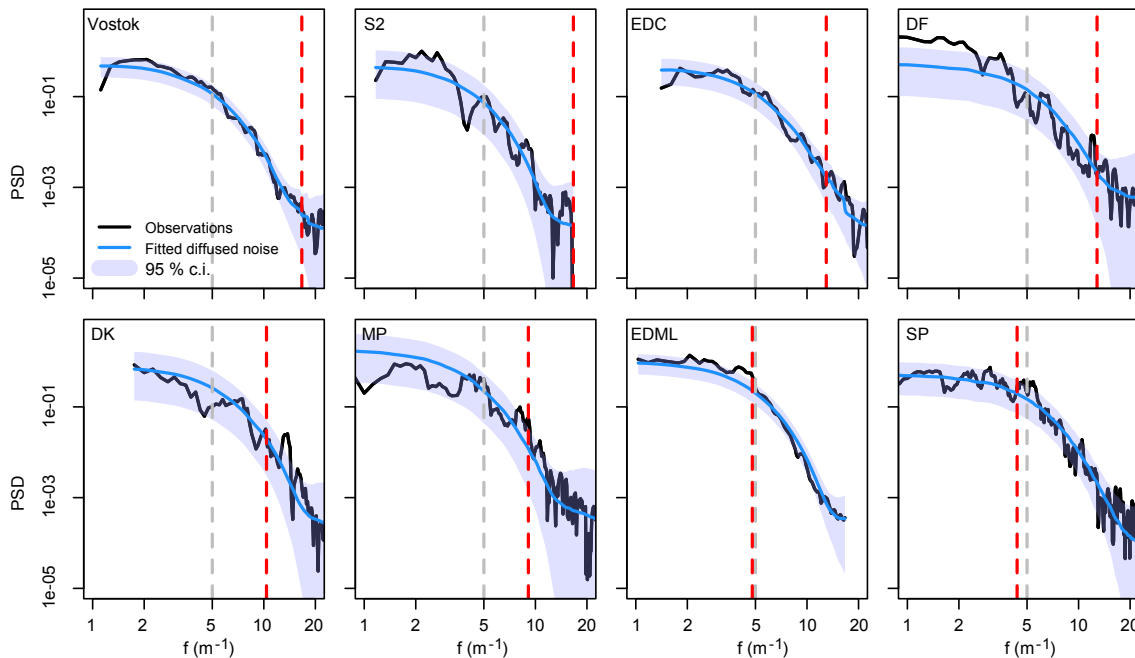
The model also includes one implicit parameter, the resolution at which we evaluate the variance of the noise  $\epsilon(t)$ . This is required as, in contrast to the seasonal cycle, white noise is not a band-limited signal. Descriptively, the parameter  $\epsilon(t)$  represents the smallest spatial scale on which isotopic variations are possible. We assume 1 cm here, thus implying the complete mixing of any variations occurring on smaller spatial scales.

Finally, the burial of the surface snow transfers the surface signal time series into the depth profile  $\delta^{18}\text{O}_{\text{firm}}(z)$ . We approximate this process assuming a constant accumulation rate given by the present-day observations (Table 2) as the intra-seasonal and interannual variations in accumulation are already included in  $\epsilon(t)$ . During burial, the isotope signal is influenced by densification, layer thinning by ice flow and isotopic diffusion. Thinning of the layers is negligible in the



**Figure 3.** Modelled diffusion lengths for the different sites. The diffusion lengths for  $\delta^{18}\text{O}$  (right scale) are shown against depth. Also shown are the implied cycle lengths (left scale) assuming diffused white noise. For most sites, the mean cycle lengths in the top 4 m (triangles) are around 20 cm.

top metres analysed here and therefore neglected in our analysis. Densification is modelled using the Herron–Langway model (Herron and Langway, 1980), assuming constant surface density and temperature for each site which are set to the modern observations (Table 2). The results are not sensitive to these simplifications since the overall effect of densification is small in the top metres of firm.



**Figure 4.** Power spectra of the firn  $\delta^{18}\text{O}$  variations in the firn profiles. The null hypothesis of diffused white noise (blue) and the corresponding critical significance threshold values (shaded blue) are shown. For each site, the frequency corresponding to the annual snow layer thickness is shown as a vertical red dashed line, and the frequency corresponding to 20 cm is shown as a vertical grey dashed line.

The effect of firn diffusion on the original isotope signal  $\delta^{18}\text{O}_{\text{surface}}$  is modelled as the convolution with a Gaussian kernel (Johnsen et al., 2000) which leads to an overall smoothing of the input signal. The amount of smoothing is governed by the width of the convolution kernel given by the diffusion length  $\sigma$ , which is sensitive to ambient temperature, pressure and the density of the firn (Whillans and Grootes, 1985). We treat the dependency on density according to Gkinis et al. (2014), with diffusivity after Johnsen et al. (2000). The temperature dependency of the diffusion length is highly nonlinear, with warmer temperatures leading to a stronger change. Thus, the seasonal cycle in firn temperature in the top metres increases the effective diffusion length. To approximate this effect, we follow the approach of Simonsen et al. (2011). We model the seasonal cycle in firn temperature according to the general heat transfer equation, driven by surface temperatures for constant thermal diffusivity and negligible heat advection (e.g. Paterson, 1994). We then calculate the diffusion length for parcels starting in every month of the year and compute the average diffusion length over all parcel trajectories. For the sake of simplicity, we assume a constant density for the firn temperature modelling, which is set to the observed surface densities (Table 2).

The resulting effective diffusion lengths for our study sites are shown in Fig. 3. Interestingly, the combined effect of lower accumulation rates and colder temperatures largely compensate each other, leading to a rather constant diffusion length across the Antarctic Plateau.

### 3 Results

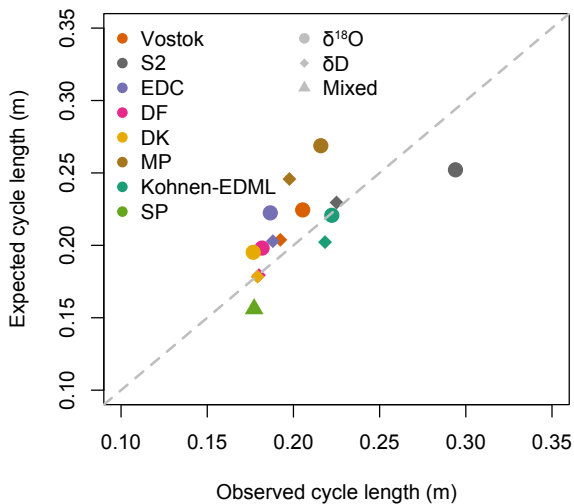
#### 3.1 Spectral analysis of the isotope profiles

Despite originating from very different accumulation conditions, the power spectra of  $\delta^{18}\text{O}$  are remarkably similar across all analysed profiles (Fig. 4). The similarity of the diffused white noise null plus measurement noise spectra (blue shading) and the actual power spectra (black) suggests that the shape of the spectra are dominated by diffusion. Most sites show spectra fully consistent with diffused white noise and do not show a significant periodicity at any frequency, including frequencies corresponding to  $\sim 20$  cm (vertical grey dashed line). DF shows some significant deviation at the metre scale, corresponding to multidecadal variations. DF, MP, EDML and SP show locally significant peaks at frequencies close to the annual snow layer thickness (vertical red dashed line). However, even for these sites, the energy potentially related to the seasonal cycle is small, especially considering that the presumably driving temperature signal is dominated by the seasonal cycle.

#### 3.2 Theoretical and observed cycle length in isotope profiles

The similarity of the power spectra between different sites, their similarity to the spectrum of diffused noise, and the lack of evidence for periodic oscillations suggests that the apparent cycles might be independent of periodic variations





**Figure 5.** Comparison of expected and observed cycle length for all sites. The cycle length is evaluated between 1 and 4 m snow depth (or the maximum depth for shallower snow pits). Results are shown separately for  $\delta\text{D}$  and  $\delta^{18}\text{O}$  except for SP, where a combined value is used since here  $\delta\text{D}$  and  $\delta^{18}\text{O}$  are not available from the same profiles. The expected cycle length is directly derived from the diffusion length assuming a pure white noise surface signal. Note that cycle lengths are larger than those provided in Fig. 3 as the first metre is excluded from this analysis.

in the climate signal and instead represent a property of diffused noise. We note that “noise” here just describes isotopic variations that are largely independent in time and thus exhibit a largely timescale-invariant (“white”) power spectrum. This neither implies a non-climatic nor negates a climatic origin of these variations. The expected cycle length for a diffused white noise signal is given by Rice’s formula (Eq. 2) and equals  $\sim 5$  times the diffusion length. This represents the limiting case where all initially climate-related isotopic variations would be reshuffled by precipitation intermittency and redistribution, leading to completely uncorrelated isotopic variations at the snow surface. Using the calculated diffusion lengths for the upper 4 m of firn gives, for  $\delta^{18}\text{O}$ , expected mean cycle lengths from 15 (SP) to 22 cm (Vostok and EDC), which are similar to those observed in isotope profiles by manual counting (Casado et al., 2017).

For a more quantitative comparison, we analyse the cycle lengths from measured  $\delta^{18}\text{O}$  and  $\delta\text{D}$  profiles using automated counting and compare them with the theoretical predictions from Rice’s formula (Fig. 5). We compare here the depth range 1–4 m (or the maximum profile depth) as counting cycles in the topmost metre is more uncertain since the cycle length is a strong function of depth. The comparison confirms the qualitative results and even shows a similarity between the variations in the observed and predicted cycle lengths ( $R = 0.63$ ,  $p = 0.06$ ). For most sites,  $\delta^{18}\text{O}$  profiles show a larger cycle length than  $\delta\text{D}$ , which is expected since the diffusion length for  $\delta^{18}\text{O}$  is slightly ( $\sim 10\%$ ) larger, al-

though this is largely within the uncertainties of the estimates.

This similarity between observed cycle lengths and those predicted from diffused white noise is surprising, as we have not yet included any climate signal, such as the seasonal cycle, in our analysis. To better understand the combined influence on the firn signal of noise, the seasonal cycle and the diffusion process, we now analyse the extent to which simulated firn profiles depend on the input signal.

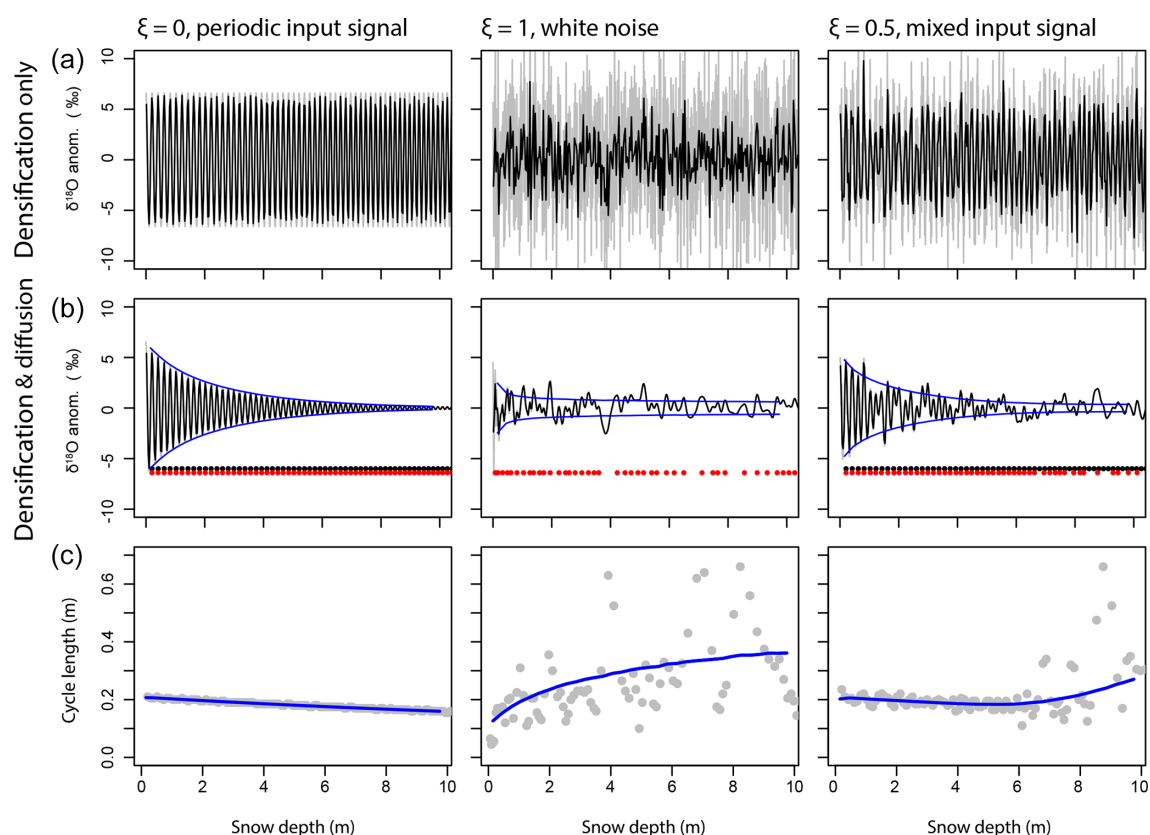
### 3.3 Illustrative examples of the cycle length–depth dependency

In contrast to the diffusion length, which is a function of snow depth, the climate signal should be largely invariant over time and thus, in first order, independent of the depth. Therefore, investigating the depth dependency of the cycle length in isotopic profiles should provide us with additional insights about the origin of the variations.

To understand the depth dependency of the cycle length, as well as of the signal amplitudes, we provide three examples of simulated depth profiles (A–C) illustrating the effect of firn diffusion and noise (Fig. 6), using the environmental and depositional conditions of the EDML site (Table 2).

(A) We assume a purely periodic surface isotope signal, such as the seasonal cycle ( $\xi = 0$ ; Fig. 6a). The cycle length, measured in snow depth units, is determined by the input signal and decreases slowly with depth due to densification. In the specific case of EDML, the cycle length is approximately 21 cm, which is determined by the local accumulation rate of  $\sim 72 \text{ mm w.e. yr}^{-1}$  and a firn density of  $345 \text{ kg m}^{-3}$ . Diffusion attenuates the initial amplitude  $A_0$  of the signal with depth (Fig. 6a, middle) according to  $A = A_0 \exp(-\frac{1}{2}\omega^2\sigma^2)$  (Johnsen et al., 2000).

(B) We assume that the input signal is white noise ( $\xi = 1$ ; Fig. 6b). Possible mechanisms for such a signal would be precipitation intermittency and snow redistribution having completely reshuffled the initial seasonal signal. In this case, the expected cycle length is proportional to the diffusion length as predicted by Rice’s formula and thus monotonically increases with depth. For the simulated conditions, this increase is larger than the decrease from layer thinning due to densification. The observed cycle length for a given simulation (grey dots) follows this expectation but its variability is much larger, compared to case (A), given that we now observe a stochastic instead of a deterministic periodic signal. The amplitude of the signal, as measured for example by the peak-to-peak distances, decreases near the surface and then remains largely constant. This can be heuristically understood by considering the two compensating effects: for a given cycle length or frequency  $\omega$ , diffusion reduces the amplitude as  $\exp(-\frac{1}{2}\omega^2\sigma^2)$ . For a constant cycle length, the increasing  $\sigma$  with depth thus leads to an amplitude reduction. However, since the effective cycle length increases proportional to  $\sigma$ , both contributions cancel and lead to a constant



**Figure 6.** Illustrative examples of the effect of noise and firn diffusion on the cycle length and amplitude for three input time series ( $\xi = 0, 1, 0.5$ ). **(a)** Input signal after densification. **(b)** Signal after densification and diffusion. The raw (2 mm resolution) data (grey) and 2 cm averages (black) mimicking a typical sampling resolution are shown. In addition, the mean expected amplitude from the Monte Carlo simulations (blue), the positions of the expected maxima of a purely periodic signal (black dots) and the positions of the actual maxima (red dots) are provided. **(c)** Mean expected cycle length (blue) and actual distance (grey) between pairs of maxima (or minima).

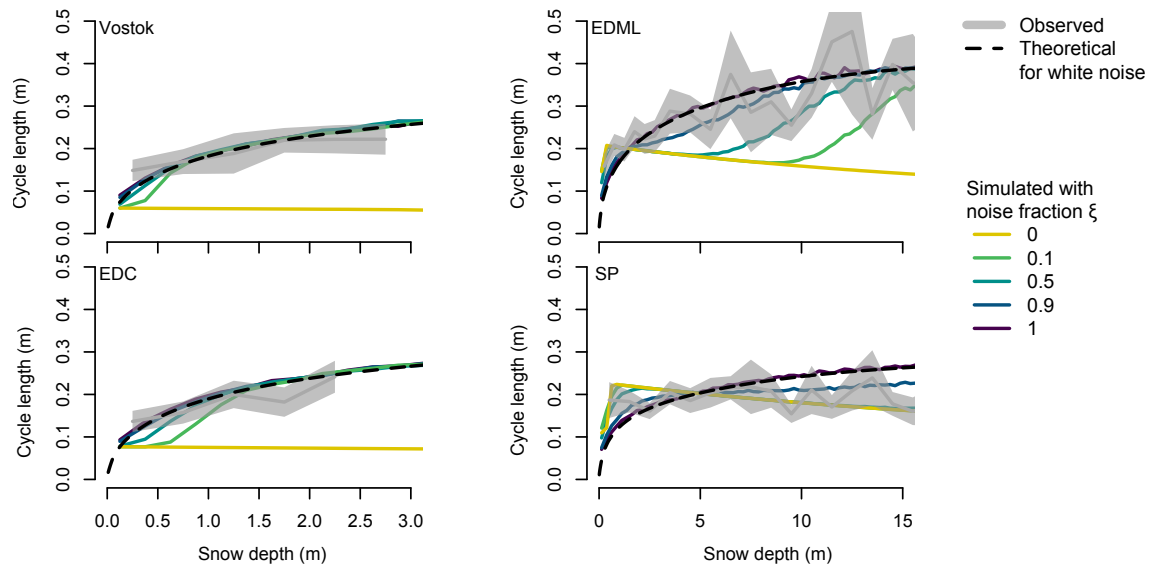
amplitude. For the investigated case, the cycle length again is around 20 cm in the top 4 m but here it is determined, in contrast to (A), only by the diffusion length and is not set by the input surface signal.

(C) Finally we consider a mixture of cases (A) and (B), assuming that the input signal is equally partitioned (in variance) between white noise and periodic signal ( $\xi = 0.5$ ; Fig. 6c). In the top  $\sim 6$  m, the seasonal cycle dominates the diffused signal. Then, as the amplitude of the periodic cycle is reduced, while the diffusion length increases, the diffused noise comes into play and starts to dominate the signal. The observed cycle length of isotopic maxima in this specific simulation (grey dots) thus is a mixture of cases (A) and (B), first following the annual layer thickness before transitioning to the random distances set by the properties of the diffused noise. The expected cycle length (blue line), which corresponds to the mean cycle length obtained from averaging across multiple sites or across some metres of the profile, decreases in the top 5 m but then increases smoothly further down in the profile. If one counted the maxima of the isotope profile (red dots), one would reliably count the periodic

signal in the upper part of the core before one would start to occasionally miss some maxima (black dots) that would otherwise be there without noise, resulting in an under-counting of the seasonal cycle in the lower part of the core.

### 3.4 Predicted and observed depth dependency of the cycle length

These examples (Fig. 6) demonstrate that very different input signals (pure noise or pure seasonal cycle) can create similar mean cycle lengths in the top metres of the firn, but they show a distinct depth dependency. We therefore estimate cycle lengths as a function of snow depth for all our East Antarctic study sites (Fig. 7), in an attempt to distinguish between these two cases. We focus on sites for which multiple isotope profiles are available (Vostok, EDC, EDML and SP) as they allow better estimates of the variability; however, qualitatively similar results are obtained for all sites (Appendix B: Fig. A2). These results are compared to those estimated from artificial profiles simulated for different noise fractions of the input signal, ranging from the pure seasonal cycle case ( $\xi = 0$ ) to pure white noise ( $\xi = 1$ ). As a reference, we ad-



**Figure 7.** Comparison of numerically predicted and observed  $\delta^{18}\text{O}$  cycle statistics as a function of depth for all sites with multiple profiles. Observed cycle lengths (grey line) and a 2 standard error estimation uncertainty (grey band) are shown. Simulated cycle lengths are shown for various noise fractions in the input signal (coloured lines). In addition, the theoretical cycle length for pure white noise is shown (dashed black).

ditionally show the analytical result (black dashed line) for the cycle length of diffused white noise according to Rice's formula (Eq. 2).

At all sites except SP, an increase in the estimated cycle length (grey bars) is observed with depth (Fig. 7, left column). This behaviour is well reproduced by simulations that assume a high noise fraction ( $\geq 50\%$ ). For all but the SP site, the observed cycle length also follows the theoretical prediction for a pure white noise signal (black dashed line). This behaviour is in strong contrast to the cycle length in the 0%-noise case (yellow), which decreases with depth due to the thinning of the annual layer thickness by densification.

For the very low-accumulation sites, Vostok and EDC, a small noise fraction already (10%) leads to the “diffused noise” behaviour below a depth of 0.5 m (Vostok), or 1 m (EDC), since the seasonal cycle is already strongly damped by diffusion in the first metre. Thus, in these cases, just analysing the behaviour of the cycle length does not strongly constrain the fraction of noise vs. seasonal cycle of the surface isotope signal. In contrast, for EDML, the larger annual layer thickness and the stronger diffusion caused by the warmer temperatures lead to strongly diverging behaviour of the expected cycle lengths dependent on the ratio of noise to seasonal signal in the input. Interestingly, even at this relatively high-accumulation site, the observed cycle length increases and follows that expected and shown for simulations that assume a high noise fraction (90 or 100%). In contrast, a decreasing cycle length would be expected for densification of a pure, noise-free, seasonal signal. For SP, the smaller diffusion length relative to EDML results in a weaker depen-

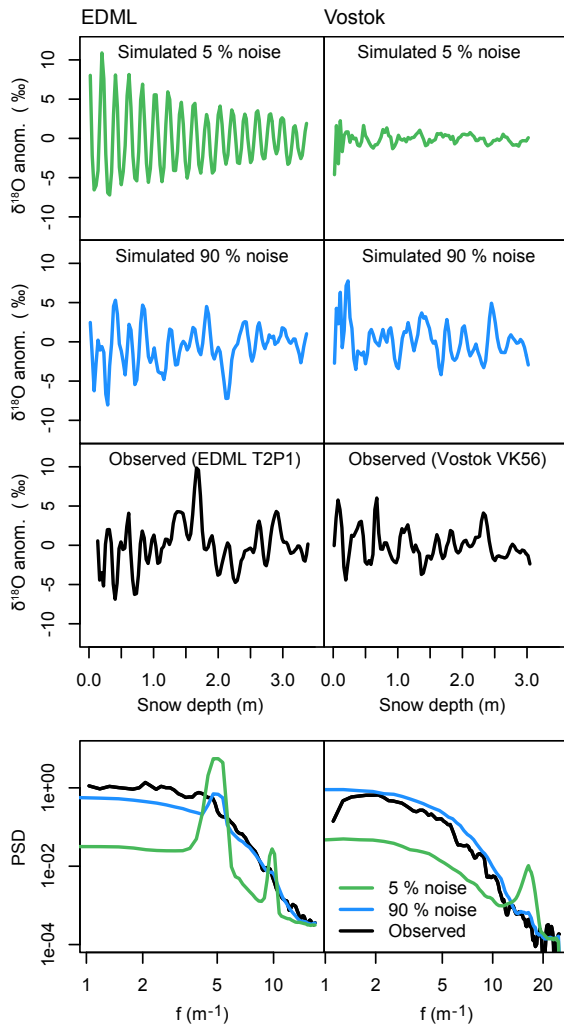
dency of the expected cycle lengths on the input signal. The observed cycle length is rather constant and thus lies in between the cases of 0 and 90% noise.

In summary, the presented evidence suggests that, with the exception of SP, diffused noise is the dominant source of the apparent cycles at the studied sites.

### 3.5 Simulated and observed profiles and power spectra for EDML and Vostok

As a visual test of our finding, we compare the depth profiles and power spectra of simulated and observed example profiles for the two representative sites EDML (72 mm w.e.  $\text{yr}^{-1}$  accumulation) and Vostok (21 mm w.e.  $\text{yr}^{-1}$  accumulation) (Fig. 8). We analyse noise fractions of 5% (seasonally dominated) and 90% (noise dominated). The first represents the expected case for a perfect temperature proxy (perfect linear isotope-to-temperature relationship, no precipitation intermittency or redistribution, constant accumulation) as the seasonal cycle explains roughly 95% of the total temperature variance over the last decades (Table 2). The second case represents the noise fraction that creates realistic cycle lengths and amplitudes compared to the observations (Fig. 7). For each site, a single isotope profile is shown but similar results are obtained for any of the profiles.

We first analyse the low (5%) noise case (Fig. 8, top row). For EDML, the effect of diffusion on the amplitude of the seasonally dominated signal is moderate and only leads to a reduction in amplitude of about 50% in the top 3.5 m. For Vostok, the annual layer thickness is much smaller and the diffusion therefore already destroys most of the seasonal sig-



**Figure 8.** Visual comparison of measured and simulated profiles for EDML (left) and Vostok (right panel). Upper row: simulations for 5% noise, representing a pure climate signal. Middle row: simulations for 90% noise. Bottom row: power spectra of the simulated and observed isotope profiles. The observed spectra are the mean of all spectra from the profiles available for the site. The simulated spectra are the mean spectra over 100 realisations of the isotope profiles.

nal in the top half metre, leaving only a very small diffused signal. For both sites, the diffused signal looks very much unlike the observed isotope profiles (third row). For EDML, the diffused signal (top row) is very regular, whereas the observed profile (third row) shows strong interannual variations. For Vostok, the amplitude of the simulated diffused signal is much smaller than the observed amplitude of the profile.

In contrast, the high (90%) noise cases (second row) share, for both sites, many properties with the observations. While we do not expect any correlation between the simulated and observed profiles, since the simulated profiles are by con-

struction largely random, the amplitude, interannual variations and cycle lengths are all similar.

These findings are confirmed by comparing the power spectra of the simulations and observations. As shown earlier (Fig. 4) the observations show a broadband spectrum with no clear periodicity. For EDML, the power spectrum of the low (5%) noise simulation (Fig. 8, bottom row) shows clear peaks at the periods corresponding to the annual and biannual layer thickness. The broadening of the peaks arises from the varying layer thickness due to densification. In the frequency range outside the peaks, the power spectral density, which is a measure of the timescale-dependent variance of the signal, is about 1 order of magnitude lower than observed. In contrast, the simulations of the high-noise case result in a power spectrum that is nearly indistinguishable from the observations. For Vostok, a similar behaviour is observed. Here, the annual peak corresponding to the layer thickness of the seasonally dominated signal is smaller, since it is strongly damped by diffusion. Again, the variance outside the peak is much too small compared to the observations, whereas the noise-dominated signal has a power spectrum nearly indistinguishable from the observations.

#### 4 Discussion and summary

Stable isotope ratios in firm are usually interpreted as temperature proxy. Therefore, to a first approximation, vertical isotopic variations in a snow pit should reflect the temperature variations. The naive expectation is thus that a 3 m deep profile containing 25 years and 25 seasonal cycles of climate should look very different from a 3 m profile at a higher accumulation site that only contains 10 years of temperature variations. However, our results show that this is not the case for many low-accumulation ( $< 100 \text{ mm w.e. yr}^{-1}$ ) sites on the Antarctic Plateau, whose isotope profiles appear remarkably similar (Fig. 1), and this similarity is not limited to the time series but also applies to the power spectra, which are largely indistinguishable between the sites (Fig. 4). The visual similarity of the isotope profiles is further confirmed by systematically analysing the “cycle length” between isotopic maxima or minima (Fig. 5).

To explain these findings, we constructed a simple forward model for isotope signals in firm cores, similar to the ice-core proxy system model of Dee et al. (2015) or the “virtual-ice-core model” of van der Wel et al. (2011). Our model, driven by a mixture of the seasonal cycle and white noise as input, allows the simulation of realistic isotope profiles in terms of power spectral density, amplitude and cycle length (Fig. 8). Importantly, to obtain realistic simulations of the observed firm profiles, we had to assume a high noise level in the input signal that represents the temporal variations of stable isotope ratios at the surface (Figs. 7 and 8). Such a high noise level is consistent with the effect of precipitation intermittency (Helsen et al., 2005; Sime et al., 2009; Persson et al.,

2011) and the stratigraphic noise caused by the redistribution of snow (Fisher et al., 1985; Laepple et al., 2016; Münch et al., 2016). Both mechanisms distort the original signal and thereby redistribute the energy from the seasonal periodic cycle to largely uncorrelated variations. In these cases the statistical properties, especially the power spectra of the isotope profiles, are mainly determined by isotopic diffusion, which is rather constant on the Antarctic Plateau (Fig. 3). In turn, similar power spectra imply a similar characteristic spacing between maxima or minima, a fundamental property of stochastic processes known as Rice's formula (Rice, 1944, 1945).

We applied Rice's formula to the problem of isotopic variations and showed that, assuming a white noise signal before diffusion, the expected spacing between isotopic maxima or minima ("cycle length") is  $\sim 5$  times the diffusion length (Eq. 2) and thus on the order of 15–25 cm in the top metres of Antarctic firn. It is important to emphasise that such a characteristic spacing of minima or maxima does not imply a periodic deterministic signal that would appear as a peak in the power spectrum, as it is also the property of purely stochastic variations.

While in instrumental climate observations, a deterministic cycle (e.g. variations driven by the seasonal cycle) would be clearly distinguishable from the realisation of a purely stochastic process, this is less clear for snow pits or firn cores. Here, intra-seasonal and interannual changes in accumulation distort the seasonal cycle (Cuffey and Steig, 1998) and might therefore smooth out potential periodic peaks in the power spectrum. However, we further showed that the depth dependency of the cycle length allows discrimination between a deterministic signal (e.g. the seasonal cycle) and a stochastic signal affected by isotopic diffusion. The first case leads to a decrease in cycle length with depth by thinning of the annual layers due to densification, while the latter leads to an increase in cycle length with depth due to the increasing diffusion length (Figs. 6 and 7).

Defining noise as deviations from the surface isotope signal that are unexplained by the local temperature time series, the depth dependency of the cycle length and amplitude suggests a significant proportion of noise in the surface isotope signal at all analysed sites (Fig. 7). While missing knowledge concerning the properties (i.e. the spectral shape) of the noise before diffusion impedes quantitative estimates, with the exception of SP, a noise level of 50–90 % of the total variance seems realistic for all sites analysed in this study. For SP, the result suggests a noise level of 10–50 %. These noise fractions are estimated from snow pits of several metres length and evaluated on the centimetre scale. They therefore correspond to variations from subannual to decadal timescales.

This assertion may seem particularly troubling for the EDML site, as here the accumulation rate, as determined from snow stakes or volcanic markers in firn cores, corresponds to an annual layer thickness of  $\sim 20$  cm of snow, and the cycles were usually interpreted as annual cycles (Oerter

et al., 2004). In contrast, our study suggests that, at least below a depth of 3 m, the isotopic "cycles" in single profiles or cores are not dominated by the seasonal signal but rather by diffused noise (Fig. 7), leading to the observed increase in cycle length with depth. While challenging the earlier interpretation of the variations, the new finding is consistent with the high stratigraphic noise level (50 % variance) independently estimated by comparing horizontal and vertical variability in snow trenches (Münch et al., 2016) and the low reproducibility between nearby firn cores in this region (Karlöf et al., 2006).

For the three sites along the East Antarctic divide analysed here (DF, MP, DK) and later an extended set of sites, Hoshina et al. (2014, 2016) interpreted the multiyear cycles as the result of variable accumulation rates in combination with post-depositional changes at the surface, such as ventilation or condensation–sublimation effects. Both studies further argued for several significant periodic cycles in partly the same firn profiles. This interpretation differs from our finding of no significant periodicities in the power spectra of these sites (Fig. 4). In contrast to our study, Hoshina et al. (2014, 2016) tested the spectral peaks against undiffused white noise. We argue that this null hypothesis will always lead to spurious significant peaks in firn profiles (Appendix C) as the true background spectrum is modified by diffusion and is therefore not appropriate. For Vostok, Ekaykin et al. (2002) argued that the spatial dune structure results in temporal isotope variations after burial leading to the cycles. For EDC, Petit et al. (1982) discussed the potential of missing months on the isotope record, due to precipitation intermittency and erosion as well as firn diffusion, to create the structure of the isotopic variations. All four studies propose mechanisms that distort or destroy the regular seasonal cycle of stable isotope ratios and thus create noise in the isotopic record. However, we argue that not these processes but rather the diffusion sets the first-order spectral structure of the signal, including the observed "cycle length", and that this explains the similarity across sites.

At first sight, our results seem to contradict the finding that firn-core isotope profiles are significantly correlated with impurities such as  $\text{Na}^+$  (Hoshina et al., 2014, 2016), especially in very low-accumulation regions. However, such a relationship is expected when the initial surface signals of isotopes and impurities are correlated and when this correlation is not limited to high-frequency variations. For example, when both the isotopes in snowfall and the impurities show a seasonal cycle, and both are deposited and redistributed together (i.e. wet deposition of impurities), this will result in correlated surface signals. For the typical variability of observed impurity profiles, this correlation is partly preserved even after diffusion (Appendix A: Fig. A1).

Similar noise levels in the isotope and impurity signals at the surface, caused by common deposition and redistribution processes, would also imply that little or no seasonality is preserved in the impurity records at those sites for which

we find a high noise level. This is consistent with the missing seasonality in the impurity signal at sites with very low accumulation (Hoshina et al., 2014, 2016) but less clear for EDML, where a seasonal cycle in impurities seems to be preserved (Sommer et al., 2000). The latter suggests either that at EDML the surface seasonality of the impurity signal is stronger than that of the isotope signal, that both atmospheric signals are corrupted differently on their way to the snow or that the noise level is on the lower side of our estimates.

Our result also has implications for estimating isotopic diffusion and for the usage of layer counting. Assuming a white noise input signal, the observed cycle length is proportional to the diffusion length (Eq. 2). The agreement between the observed and simulated cycle length (Fig. 7), and the observed spectra and diffused noise spectra (Fig. 8), thus provides some confirmation of the classical diffusion model (Johnsen et al., 2000). Recently it has been argued that the diffusion model of Johnsen et al. (2000) overestimates diffusion lengths in the top metres of the firn, at least in Greenland (van der Wel et al., 2015b). Focusing on the same data set might potentially allow this to be formally tested but this is beyond the scope of this study.

Our findings further support the assumption of an initially white spectrum as it is used in isotopic diffusion studies (e.g. Gkinis et al., 2014), since the white noise assumption for the surface signal allows a good reproduction of the observed power spectra (Fig. 4) and of the observed cycle lengths (Fig. 7).

We showed that the level of noise in the input signal also determines the depth dependency of the amplitude of the variations. The boundary case of a diffused pure seasonal cycle leads to an exponential decrease of amplitude with depth (Johnsen et al., 2000), whereas a diffused white noise signal results in a slower decrease of the peak-to-peak amplitude (Fig. 6). All isotope signals in snow or firn will be noise affected due to stratigraphic noise (Fisher et al., 1985; Laepple et al., 2016; Münch et al., 2016) and precipitation intermittency (Helsen et al., 2005; Sime et al., 2009; Persson et al., 2011). Therefore, estimates of the diffusion strength based on analysing the decay of the seasonal cycle amplitude by measuring the peak-to-peak amplitude in the time domain (Cuffey and Steig, 1998) might be biased low if they do not account for the noise. Related to this issue, our results also underline the fact that layer counting in isotope profiles should only be performed after undiffusing the isotope signal (Cuffey and Steig, 1998) or using non-diffused parameters such as impurities. Our results suggest that layers in the deeper parts of the firn could be systematically missed by simply counting the local extrema in isotope profiles (Fig. 6), leading to age models that are biased towards “younger” ages.

The combination of isotopic diffusion with strong variability at the surface that is not directly related to temperature also limits the effective resolution of climate signals that can be obtained by analysing firn-core isotopic records. While the problem of diffusion could be overcome by undiffusing

the signal (Cuffey and Steig, 1998), this procedure also inflates the noise. Therefore, methods to reduce the noise by averaging across cores (Münch et al., 2016), or the use of other parameters, have to be employed when aiming for high-resolution climate reconstructions at low-accumulation sites.

## 5 Conclusions

We provide an explanation of why snow pits across different sites in East Antarctica show visually similar variations in stable isotope ratios  $\delta^{18}\text{O}$  and  $\delta\text{D}$ . We argue that the similar power spectra and apparent cycles of around 20 cm in near-surface isotope profiles are the result of a seasonal cycle in isotopes, noise, for example from precipitation intermittency, and diffusion. The near constancy of the diffusion length across many ice-coring sites (Fig. 3) explains why the structure and cycle length is largely independent of the accumulation conditions. At some sites, such as EDML, the cycle length implied by the isotopic diffusion coincides with the annual snow layer thickness in the upper metres of the firn. This calls for a careful consideration of the effects of noise and diffusion when interpreting isotopic variations.

Our hypothesis does not exclude the existence of a climatic signal in the isotope time series, as any low-frequency surface signal would still be preserved in the diffusion process, and thus does not question the relevance of stable isotope ratios as a palaeo-temperature proxy. However, in particular for low-accumulation areas we show that the typical spacing of extrema in isotope profiles can be explained without invoking multidecadal climate changes or other climate-related hypotheses.

Our results underline previous findings that  $\delta^{18}\text{O}$  and  $\delta\text{D}$  signals in low-accumulation regions have a small signal-to-noise ratio. Therefore, methods to reduce the noise such as averaging across cores have to be employed when aiming for high-resolution climate reconstructions. Finally, systematically analysing the spectral shape of isotopic variability and not just the potential periodicities and cycles might be a promising way forward to quantitatively understand the isotopic variability in polar firn cores (Fig. 8).

*Data availability.* The snow trench (T15) isotope data are available in the PANGAEA repository <https://doi.org/10.1594/PANGAEA.876639> (Münch et al., 2017b). The snow-pit and firn-core isotope data used are available in the PANGAEA repository <https://doi.org/10.1594/PANGAEA.883787> (Laepple et al., 2017).

## Appendix A: Sensitivity to the input signal

Our previous calculations assumed an isotope surface signal that is a mixture of a seasonal cycle and uncorrelated (white) noise. While uncorrelated noise is the simplest hypothesis, it is likely that the surface signal exhibits more structure. Potential processes that lead to autocorrelation include precipitation events that deposit several centimetres of snow with similar isotopic composition, as well as mixing and redistribution by wind drift that might vertically homogenise the snow surface.

Unfortunately, the surface isotope signal before diffusion is largely unknown. To obtain a reasonable surrogate for the power spectrum of the surface isotope signal, we therefore resort to observed major ion profiles. This is motivated by the fact that, assuming an atmospheric source, wet deposited impurities are also influenced by precipitation intermittency and snow redistribution and might therefore show a similar variability structure as the isotope signal at the surface. However, in contrast to the isotopic composition, impurities are not affected by diffusion and therefore the variability in measured impurity firn profiles should in a first approximation reflect the temporal surface variability.

Interestingly, major ion profiles in snow pits (e.g. Hoshina et al., 2014, 2016) are clearly distinguishable from white noise. This suggests that at least some correlated structure is preserved or created in the depositional process.

To test the effect of autocorrelated noise in the input signal on the resulting cycle length, we simulate profiles assuming three different input signals: (1) white noise, (2) white noise subject to a 5 cm mixing (low-pass filtered with a finite response filter with cut-off frequency  $1/10\text{ m}^{-1}$ ) and (3) noise constructed with a similar temporal structure as observed impurity profiles, acting as a surrogate for the isotopic surface variability. For the latter, we estimate the mean power spectrum of the 4 m long  $\text{Na}^+$  impurity profiles of DF and MP (Hoshina et al., 2014) and generate new random time series from this spectrum.

The results (Fig. A1) show that although the input signal strongly differs, the diffused signal is very similar. The resulting cycle lengths for the white noise and the mixed white noise inputs are identical, and both are close to the theoretical expectation (dashed line). The cycle length of the impurity-based simulation is slightly higher ( $\sim 3$  cm offset).

We note that while the cycle length is similar, the correlation between the input and the diffused signal is larger for the more structured input signals as a larger fraction of low-frequency variability is preserved after diffusion.

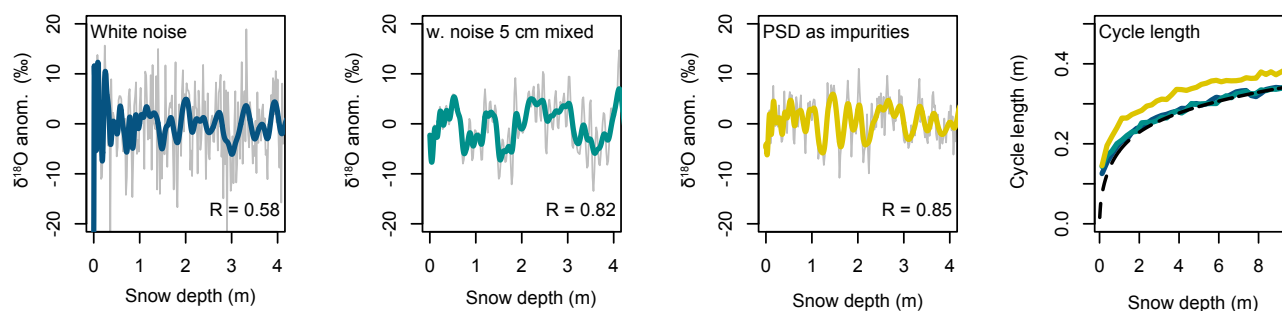
## Appendix B: Observed and simulated cycle lengths for the sites with one (single) available profile

In the main text, we showed the observed and simulated cycle length statistics for the sites with multiple profiles (Fig. 7), as they allow a better estimation of the cycle length. The four remaining sites with single profiles (Fig. A2) also show cycle lengths consistent with the high noise level simulations.

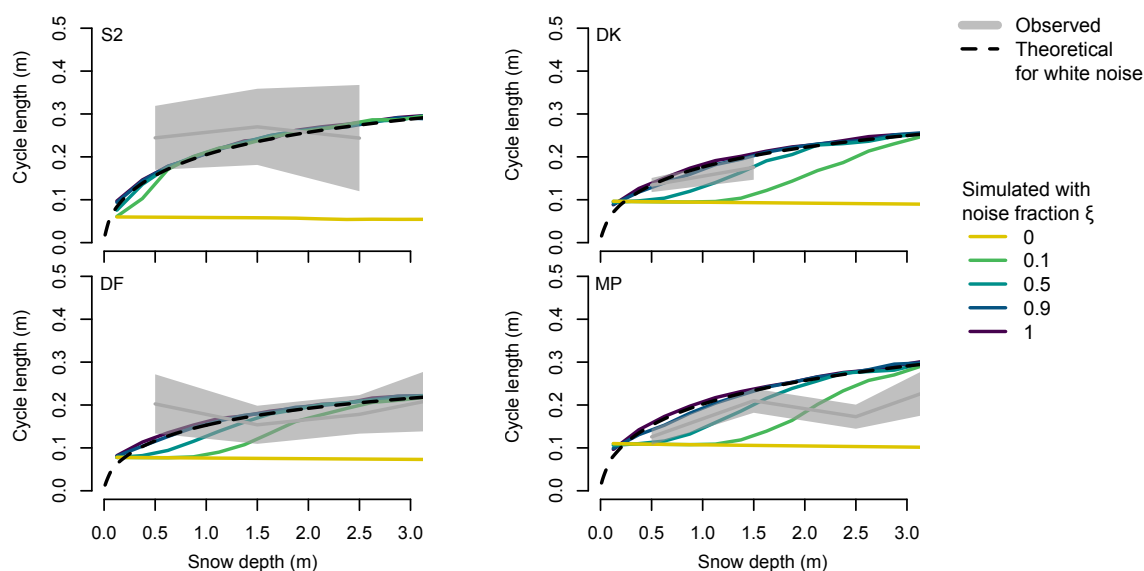
The depth dependency of the cycle length is less clear, which is likely caused by the large estimation uncertainty. In addition, MP shows a systematically smaller observed cycle length than the simulations. Potential reasons could be either uncertainties in the isotopic data set (independent noise leads to more minima and maxima and thus a smaller cycle length) or our choice of climatic parameters (accumulation rate, firn temperature).

## Appendix C: Spurious significance when using a white noise null hypothesis

To demonstrate the effect of a white noise null hypothesis on the spectral analysis of oxygen/hydrogen isotope ratios in snow and firn, we simulate random  $\delta^{18}\text{O}$  profiles using our minimal forward model. To mimic Hoshina et al. (2014), we use the site parameters for DF and a pure white noise ( $\xi = 1$ ) input signal that is subject to the site-specific densification and diffusion. The final data are averaged to 3 cm to mimic a typical sampling interval. We estimate the power spectrum using a raw periodogram and show the  $p = 0.05$  significance level of a white noise null hypothesis. For all three realisations of purely random firn profiles, the spectra show energy well above the white noise significance level (Fig. B1). This demonstrates the need for using a null hypothesis that accounts for the isotopic diffusion.

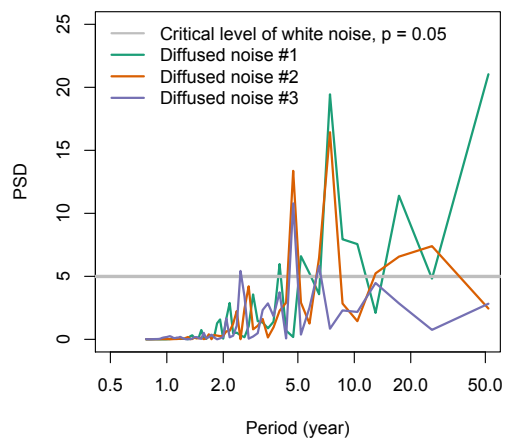


**Figure A1.** Sensitivity of the cycle length to the temporal correlation structure of the assumed input signal. Thin lines show the undiffused signal, while thick coloured lines the signal after diffusion. The correlation between the undiffused and the diffused signals is provided in the panels. For the more structured signals (mixed white noise and variability mimicking impurities), a larger fraction of the signal is preserved, leading to higher correlations. The resulting cycle length (right panel, coloured lines) is only weakly dependent on the input signal and is close to the theoretical result for white noise (Rice's formula, dashed line).



**Figure A2.** As Fig. 7 but for the remaining sites which only have a single isotope firm profile. Observed cycle lengths (grey line) and a 2 standard error estimation uncertainty (grey band) are shown. Simulated cycle lengths are shown for various noise fractions in the input signal (coloured lines). In addition the theoretical cycle length for pure white noise is shown (dashed black).





**Figure B1.** Demonstration of spurious peaks when testing against a white noise null hypothesis. Coloured lines show power spectra for three realisations of purely random firn profiles. The grey horizontal line shows the critical level ( $p = 0.05$ ) that has to be overcome to be locally significant against white noise. As the simulated firn profiles are subject to firn diffusion, and thus have a red power spectrum, they show random peaks higher than the critical level.

*Competing interests.* The authors declare that they have no conflict of interest.

*Acknowledgements.* We thank Y. Hoshina and A. Ekaykin for sharing their data and J. Freitag and A. M. Dolman for discussions and detailed editing. We are grateful to the reviewers B. Markle and the two anonymous reviewers, for their detailed comments on the manuscript. T. Laepple and T. Münch were supported by the Initiative and Networking Fund of the Helmholtz Association grant VG-NH900. M. Casado and A. Landais have received funding from the European Research Council (ERC) under the European Union's Seventh Framework Programme (FP7/2007–2013)/RC grant agreement number 306045 and T. Laepple has received funding from the ERC under the European Union's Horizon 2020 research and innovation programme (grant agreement no. 716092).

The article processing charges for this open-access publication were covered by a Research Centre of the Helmholtz Association.

Edited by: Joel Savarino

Reviewed by: Bradley Markle and two anonymous referees

## References

- Alfred-Wegener-Institut Helmholtz-Zentrum für Polar- und Meeresforschung: Neumayer III and Kohlen Station in Antarctica operated by the Alfred Wegener Institute, *Journal of Large-Scale Research Facilities*, 2, A85, <https://doi.org/10.17815/jlsrf-2-152>, 2016.
- Baroni, M., Bard, E., Petit, J.-R., Magand, O., and Boulrès, D.: Volcanic and solar activity, and atmospheric circulation influences on cosmogenic  $^{10}\text{Be}$  fallout at Vostok and Concordia (Antarctica) over the last 60 years, *Geochim. Cosmochim. Acta.*, 75, 7132–7145, <https://doi.org/10.1016/j.gca.2011.09.002>, 2011.
- Casado, M., Landais, A., Picard, G., Münch, T., Laepple, T., Stenni, B., Dreossi, G., Ekaykin, A., Arnaud, L., Genthon, C., Touzeau, A., Masson-Delmotte, V., and Jouzel, J.: Archival processes of the water stable isotope signal in East Antarctic ice cores, *The Cryosphere Discuss.*, <https://doi.org/10.5194/tc-2017-243>, in review, 2017.
- Casey, K. A., Fudge, T. J., Neumann, T. A., Steig, E. J., Cavitte, M. G. P., and Blankenship, D. D.: The 1500 m South Pole ice core: recovering a 40 ka environmental record, *Ann. Glaciol.*, 55, 137–146, <https://doi.org/10.3189/2014AOG68A016>, 2014.
- Cuffey, K. M. and Steig, E. J.: Isotopic diffusion in polar firm: implications for interpretation of seasonal climate parameters in ice-core records, with emphasis on central Greenland, *J. Glaciol.*, 44, 273–284, <https://doi.org/10.1017/S002214300002616>, 1998.
- Dansgaard, W.: Stable isotopes in precipitation, *Tellus*, 16, 436–468, <https://doi.org/10.3402/tellusa.v16i4.8993>, 1964.
- Dee, D. P., Uppala, S. M., Simmons, A. J., Berrisford, P., Poli, P., Kobayashi, S., Andrae, U., Balmaseda, M. A., Balsamo, G., Bauer, P., Bechtold, P., Beljaars, A. C. M., van de Berg, L., Bidlot, J., Bormann, N., Delsol, C., Dragani, R., Fuentes, M., Geer, A. J., Haimberger, L., Healy, S. B., Hersbach, H., Hólm, E. V., Isaksen, I., Kållberg, P., Köhler, M., Matricardi, M., McNally, A. P., Monge-Sanz, B. M., Morcrette, J.-J., Park, B.-K., Peubey, C., de Rosnay, P., Tavolato, C., Thépaut, J.-N., and Vitart, F.: The ERA-Interim reanalysis: configuration and performance of the data assimilation system, *Q. J. Roy. Meteor. Soc.*, 137, 553–597, <https://doi.org/10.1002/qj.828>, 2011.
- Dee, S., Emile-Geay, J., Evans, M. N., Allam, A., Steig, E. J., and Thompson, D. M.: PRoxY system modeling, with applications to oxygen-isotope systems, *J. Adv. Model. Earth Sy.*, 7, 1220–1247, <https://doi.org/10.1002/2015MS000447>, 2015.
- Ekaykin, A. A., Lipenkov, V. Y., Barkov, N. I., Petit, J. R., and Masson-Delmotte, V.: Spatial and temporal variability in isotope composition of recent snow in the vicinity of Vostok station, Antarctica: implications for ice-core record interpretation, *Ann. Glaciol.*, 35, 181–186, <https://doi.org/10.3189/172756402781816726>, 2002.
- EPICA community members: Eight glacial cycles from an Antarctic ice core, *Nature*, 429, 623–628, <https://doi.org/10.1038/nature02599>, 2004.
- EPICA community members: One-to-one coupling of glacial climate variability in Greenland and Antarctica, *Nature*, 444, 195–198, <https://doi.org/10.1038/nature05301>, 2006.
- Fernandoy, F., Meyer, H., Oerter, H., Wilhelms, F., Graf, W., and Schwander, J.: Temporal and spatial variation of stable-isotope ratios and accumulation rates in the hinterland of Neumayer station, East Antarctica, *J. Glaciol.*, 56, 673–687, <https://doi.org/10.3189/002214310793146296>, 2010.
- Fisher, D. A., Reeh, N., and Clausen, H. B.: Stratigraphic noise in time series derived from ice cores, *Ann. Glaciol.*, 7, 76–83, <https://doi.org/10.1017/S0260305500005942>, 1985.
- Frezzotti, M., Gandolfi, S., La Marca, F., and Urbini, S.: Snow dunes and glazed surfaces in Antarctica: new field and remote-sensing data, *Ann. Glaciol.*, 34, 81–88, <https://doi.org/10.3189/172756402781817851>, 2002.
- Fujita, K. and Abe, O.: Stable isotopes in daily precipitation at Dome Fuji, East Antarctica, *Geophys. Res. Lett.*, 33, L18503, <https://doi.org/10.1029/2006GL026936>, 2006.
- Gkinis, V., Popp, T. J., Blunier, T., Bigler, M., Schüpbach, S., Kettner, E., and Johnsen, S. J.: Water isotopic ratios from a continuously melted ice core sample, *Atmos. Meas. Tech.*, 4, 2531–2542, <https://doi.org/10.5194/amt-4-2531-2011>, 2011.
- Gkinis, V., Simonsen, S. B., Buchardt, S. L., White, J. W. C., and Vinther, B. M.: Water isotope diffusion rates from the North-GRIP ice core for the last 16,000 years – Glaciological and paleoclimatic implications, *Earth Planet. Sc. Lett.*, 405, 132–141, <https://doi.org/10.1016/j.epsl.2014.08.022>, 2014.
- Helsen, M. M., van de Wal, R. S. W., van den Broeke, M. R., van As, D., Meijer, H. A. J., and Reijmer, C. H.: Oxygen isotope variability in snow from western Dronning Maud Land, Antarctica and its relation to temperature, *Tellus B*, 57, 423–435, <https://doi.org/10.3402/tellusb.v57i5.16563>, 2005.
- Herron, M. M. and Langway Jr., C. C.: Firm densification: an empirical model, *J. Glaciol.*, 25, 373–385, <https://doi.org/10.3189/S0022143000015239>, 1980.
- Hoshina, Y., Fujita, K., Nakazawa, F., Iizuka, Y., Miyake, T., Hirabayashi, M., Kuramoto, T., Fujita, S., and Motoyama, H.: Effect of accumulation rate on water stable isotopes of near-surface

- snow in inland Antarctica, *J. Geophys. Res.-Atmos.*, 119, 274–283, <https://doi.org/10.1002/2013JD020771>, 2014.
- Hoshina, Y., Fujita, K., Iizuka, Y., and Motoyama, H.: Inconsistent relationships between major ions and water stable isotopes in Antarctic snow under different accumulation environments, *Polar Sci.*, 10, 1–10, <https://doi.org/10.1016/j.polar.2015.12.003>, 2016.
- Johnsen, S. J., Clausen, H. B., Cuffey, K. M., Hoffmann, G., Schwander, J., and Creyts, T.: Diffusion of stable isotopes in polar firn and ice: the isotope effect in firn diffusion, in: *Physics of Ice Core Records*, edited by: Hondoh, T., vol. 159, 121–140, Hokkaido University Press, Sapporo, Japan, 2000.
- Johnsen, S. J., Dahl-Jensen, D., Gundestrup, N., Steffensen, J. P., Clausen, H. B., Miller, H., Masson-Delmotte, V., Sveinbjörnsdóttir, A. E., and White, J.: Oxygen isotope and palaeotemperature records from six Greenland ice-core stations: Camp Century, Dye-3, GRIP, GISP2, Renland and NorthGRIP, *J. Quaternary Sci.*, 16, 299–307, <https://doi.org/10.1002/jqs.622>, 2001.
- Jouzel, J., Merlivat, L., Petit, J. R., and Lorius, C.: Climatic information over the last century deduced from a detailed isotopic record in the South Pole snow, *J. Geophys. Res.*, 88, 2693–2703, <https://doi.org/10.1029/JC088iC04p02693>, 1983.
- Jouzel, J., Alley, R. B., Cuffey, K. M., Dansgaard, W., Grootes, P., Hoffmann, G., Johnsen, S. J., Koster, R. D., Peel, D., Shuman, C. A., Stievenard, M., Stuiver, M., and White, J.: Validity of the temperature reconstruction from water isotopes in ice cores, *J. Geophys. Res.*, 102, 26471–26487, <https://doi.org/10.1029/97JC01283>, 1997.
- Jouzel, J., Masson-Delmotte, V., Cattani, O., Dreyfus, G., Falourd, S., Hoffmann, G., Minster, B., Nouet, J., Barnola, J. M., Chappellaz, J., Fischer, H., Gallet, J. C., Johnsen, S., Leuenberger, M., Loulergue, L., Luethi, D., Oerter, H., Parrenin, F., Raisbeck, G., Raynaud, D., Schilt, A., Schwander, J., Selmo, E., Souchez, R., Spahni, R., Stauffer, B., Steffensen, J. P., Stenni, B., Stocker, T. F., Tison, J. L., Werner, M., and Wolff, E. W.: Orbital and millennial Antarctic climate variability over the past 800,000 years, *Science*, 317, 793–796, <https://doi.org/10.1126/science.1141038>, 2007.
- Kameda, T., Motoyama, H., Fujita, S., and Takahashi, S.: Temporal and spatial variability of surface mass balance at Dome Fuji, East Antarctica, by the stake method from 1995 to 2006, *J. Glaciol.*, 54, 107–116, <https://doi.org/10.3189/002214308784409062>, 2008.
- Karlöf, L., Winebrenner, D. P., and Percival, D. B.: How representative is a time series derived from a firn core? A study at a low-accumulation site on the Antarctic Plateau, *J. Geophys. Res.*, 111, F04001, <https://doi.org/10.1029/2006JF000552>, 2006.
- Kirchner, J. W.: Aliasing in  $1/f^\alpha$  noise spectra: origins, consequences, and remedies, *Phys. Rev. E*, 71, 066110, <https://doi.org/10.1103/PhysRevE.71.066110>, 2005.
- Küttel, M., Steig, E. J., Ding, Q., Monaghan, A. J., and Battisti, D. S.: Seasonal climate information preserved in West Antarctic ice core water isotopes: relationships to temperature, large-scale circulation, and sea ice, *Clim. Dynam.*, 39, 1841–1857, <https://doi.org/10.1007/s00382-012-1460-7>, 2012.
- Laepple, T. and Huybers, P.: Reconciling discrepancies between Uk37 and Mg/Ca reconstructions of Holocene marine temperature variability, *Earth Planet. Sc. Lett.*, 375, 418–429, <https://doi.org/10.1016/j.epsl.2013.06.006>, 2013.
- Laepple, T., Werner, M., and Lohmann, G.: Synchronicity of Antarctic temperatures and local solar insolation on orbital timescales, *Nature*, 471, 91–94, <https://doi.org/10.1038/nature09825>, 2011.
- Laepple, T., Hörhold, M., Münch, T., Freitag, J., Wegner, A., and Kipfstuhl, S.: Layering of surface snow and firn at Kohnen Station, Antarctica: noise or seasonal signal?, *J. Geophys. Res.-Earth*, 121, 1849–1860, <https://doi.org/10.1002/2016JF003919>, 2016.
- Laepple, T., Münch, T., Casado, M., Hörhold, M., Landais, A., and Kipfstuhl, S.: Compilation of stable isotope data from East Antarctic snow pits and firn cores, PANGAEA, <https://doi.org/10.1594/PANGAEA.883787>, 2017.
- Lefebvre, E., Arnaud, L., Ekaykin, A. A., Lipenkov, V. Y., Picard, G., and Petit, J.-R.: Snow temperature measurements at Vostok station from an autonomous recording system (TAUTO): preliminary results from the first year operation, *Ice and Snow*, 52, 138–145, <https://doi.org/10.15356/2076-6734-2012-4-138-145>, 2012.
- Lindgren, G.: *Stationary Stochastic Processes: Theory and Applications*, Chapman & Hall/CRC Texts in Statistical Science, CRC Press, Boca Raton, FL, 1st edn., 2012.
- Masson-Delmotte, V., Delmotte, M., Morgan, V., Etheridge, D., van Ommen, T., Tartarin, S., and Hoffmann, G.: Recent southern Indian Ocean climate variability inferred from a Law Dome ice core: new insights for the interpretation of coastal Antarctic isotopic records, *Clim. Dynam.*, 21, 153–166, <https://doi.org/10.1007/s00382-003-0321-9>, 2003.
- Masson-Delmotte, V., Hou, S., Ekaykin, A., Jouzel, J., Aristarain, A., Bernardo, R. T., Bromwich, D., Cattani, O., Delmotte, M., Falourd, S., Frezzotti, M., Gallée, H., Genoni, L., Isaksson, E., Landais, A., Helsen, M. M., Hoffmann, G., Lopez, J., Morgan, V., Motoyama, H., Noone, D., Oerter, H., Petit, J. R., Royer, A., Uemura, R., Schmidt, G. A., Schlosser, E., Simões, J. C., Steig, E. J., Stenni, B., Stievenard, M., van den Broeke, M. R., van de Wal, R. S. W., van de Berg, W. J., Vimeux, F., and White, J. W. C.: A review of Antarctic surface snow isotopic composition: observations, atmospheric circulation, and isotopic modeling, *J. Climate*, 21, 3359–3387, <https://doi.org/10.1175/2007JCLI2139.1>, 2008.
- Masson-Delmotte, V., Steen-Larsen, H. C., Ortega, P., Swingedouw, D., Popp, T., Vinther, B. M., Oerter, H., Sveinbjörnsdóttir, A. E., Gudlaugsdóttir, H., Box, J. E., Falourd, S., Fettweis, X., Gallée, H., Garnier, E., Gkinis, V., Jouzel, J., Landais, A., Minster, B., Paradis, N., Orsi, A., Risi, C., Werner, M., and White, J. W. C.: Recent changes in north-west Greenland climate documented by NEEM shallow ice core data and simulations, and implications for past-temperature reconstructions, *The Cryosphere*, 9, 1481–1504, <https://doi.org/10.5194/tc-9-1481-2015>, 2015.
- Morgan, V. I.: An oxygen isotope–climate record from the Law Dome, Antarctica, *Climatic Change*, 7, 415–426, <https://doi.org/10.1007/BF00139056>, 1985.
- Münch, T., Kipfstuhl, S., Freitag, J., Meyer, H., and Laepple, T.: Regional climate signal vs. local noise: a two-dimensional view of water isotopes in Antarctic firn at Kohnen Station, Dronning Maud Land, *Clim. Past*, 12, 1565–1581, <https://doi.org/10.5194/cp-12-1565-2016>, 2016.

- Münch, T., Kipfstuhl, S., Freitag, J., Meyer, H., and Laepple, T.: Constraints on post-depositional isotope modifications in East Antarctic firn from analysing temporal changes of isotope profiles, *The Cryosphere*, 11, 2175–2188, <https://doi.org/10.5194/tc-11-2175-2017>, 2017a.
- Münch, T., Kipfstuhl, S., Freitag, J., Meyer, H., and Laepple, T.: Stable water isotopes measured along two snow trenches sampled at Kohlen Station, Dronning Maud Land, Antarctica in the 2014/15 field season, PANGAEA, <https://doi.org/10.1594/PANGAEA.876639>, 2017b.
- Nicolas, J. P. and Bromwich, D. H.: New reconstruction of Antarctic near-surface temperatures: multidecadal trends and reliability of global reanalyses, *J. Climate*, 27, 8070–8093, <https://doi.org/10.1175/JCLI-D-13-00733.1>, 2014.
- Oerter, H., Graf, W., Meyer, H., and Wilhelms, F.: The EPICA ice core from Dronning Maud Land: first results from stable-isotope measurements, *Ann. Glaciol.*, 39, 307–312, 2004.
- Paterson, W. S. B.: *Physics of Glaciers*, Butterworth-Heinemann, Oxford; Burlington, MA, 3, reprinted with corrections 1998, 2001, 2002 edn., 1994.
- Percival, D. B. and Walden, A. T.: *Spectral Analysis for Physical Applications: Multitaper and Conventional Univariate Techniques*, Cambridge University Press, Cambridge, UK, 1993.
- Persson, A., Langen, P. L., Ditlevsen, P., and Vinther, B. M.: The influence of precipitation weighting on interannual variability of stable water isotopes in Greenland, *J. Geophys. Res.*, 116, D20120, <https://doi.org/10.1029/2010JD015517>, 2011.
- Petit, J. R., Jouzel, J., Pourchet, M., and Merlivat, L.: A detailed study of snow accumulation and stable isotope content in Dome C (Antarctica), *J. Geophys. Res.*, 87, 4301–4308, <https://doi.org/10.1029/JC087iC06p04301>, 1982.
- Pol, K., Masson-Delmotte, V., Cattani, O., Debret, M., Falourd, S., Jouzel, J., Landais, A., Minster, B., Mudelsee, M., Schulz, M., and Stenni, B.: Climate variability features of the last interglacial in the East Antarctic EPICA Dome C ice core, *Geophys. Res. Lett.*, 41, 4004–4012, <https://doi.org/10.1002/2014GL059561>, 2014.
- Rice, S. O.: Mathematical analysis of random noise, *Bell Syst. Tech. J.*, 23, 282–332, <https://doi.org/10.1002/j.1538-7305.1944.tb00874.x>, 1944.
- Rice, S. O.: Mathematical analysis of random noise, *Bell Syst. Tech. J.*, 24, 46–156, <https://doi.org/10.1002/j.1538-7305.1945.tb00453.x>, 1945.
- Sime, L. C., Marshall, G. J., Mulvaney, R., and Thomas, E. R.: Interpreting temperature information from ice cores along the Antarctic Peninsula: ERA40 analysis, *Geophys. Res. Lett.*, 36, L18801, <https://doi.org/10.1029/2009GL038982>, 2009.
- Simonsen, S. B., Johnsen, S. J., Popp, T. J., Vinther, B. M., Gkinis, V., and Steen-Larsen, H. C.: Past surface temperatures at the NorthGRIP drill site from the difference in firn diffusion of water isotopes, *Clim. Past*, 7, 1327–1335, <https://doi.org/10.5194/cp-7-1327-2011>, 2011.
- Sommer, S., Wagenbach, D., Mulvaney, R., and Fischer, H.: Glacio-chemical study spanning the past 2 kyr on three ice cores from Dronning Maud Land, Antarctica: 2. Seasonally resolved chemical records, *J. Geophys. Res.*, 105, 29423–29433, <https://doi.org/10.1029/2000JD900450>, 2000.
- Steen-Larsen, H. C., Masson-Delmotte, V., Hirabayashi, M., Winckler, R., Satow, K., Prié, F., Bayou, N., Brun, E., Cuffey, K. M., Dahl-Jensen, D., Dumont, M., Guillevic, M., Kipfstuhl, S., Landais, A., Popp, T., Risi, C., Steffen, K., Stenni, B., and Sveinbjörnsdóttir, A. E.: What controls the isotopic composition of Greenland surface snow?, *Clim. Past*, 10, 377–392, <https://doi.org/10.5194/cp-10-377-2014>, 2014.
- Stenni, B., Scarchilli, C., Masson-Delmotte, V., Schlosser, E., Ciardini, V., Dreossi, G., Grigioni, P., Bonazza, M., Cagnati, A., Karlicek, D., Risi, C., Udisti, R., and Valt, M.: Three-year monitoring of stable isotopes of precipitation at Concordia Station, East Antarctica, *The Cryosphere*, 10, 2415–2428, <https://doi.org/10.5194/tc-10-2415-2016>, 2016.
- Touzeau, A., Landais, A., Stenni, B., Uemura, R., Fukui, K., Fujita, S., Guilbaud, S., Ekaykin, A., Casado, M., Barkan, E., Luz, B., Magand, O., Teste, G., Le Meur, E., Baroni, M., Savarino, J., Bourgeois, I., and Risi, C.: Acquisition of isotopic composition for surface snow in East Antarctica and the links to climatic parameters, *The Cryosphere*, 10, 837–852, <https://doi.org/10.5194/tc-10-837-2016>, 2016.
- van der Wel, L. G., Streurman, H. J., Isaksson, E., Helsen, M. M., van de Wal, R. S. W., Martma, T., Pohjola, V. A., Moore, J. C., and Meijer, H. A. J.: Using high-resolution tritium profiles to quantify the effects of melt on two Spitsbergen ice cores, *J. Glaciol.*, 57, 1087–1097, <https://doi.org/10.3189/002214311798843368>, 2011.
- van der Wel, L. G., Fischer, H., Oerter, H., Meyer, H., and Meijer, H. A. J.: Estimation and calibration of the water isotope differential diffusion length in ice core records, *The Cryosphere*, 9, 1601–1616, <https://doi.org/10.5194/tc-9-1601-2015>, 2015a.
- van der Wel, L. G., Been, H. A., van de Wal, R. S. W., Smeets, C. J. P. P., and Meijer, H. A. J.: Constraints on the 2H diffusion rate in firn from field measurements at Summit, Greenland, *The Cryosphere*, 9, 1089–1103, <https://doi.org/10.5194/tc-9-1089-2015>, 2015b.
- van Ommen, T. D. and Morgan, V.: Calibrating the ice core paleothermometer using seasonality, *J. Geophys. Res.*, 102, 9351–9357, <https://doi.org/10.1029/96JD04014>, 1997.
- Whillans, I. M. and Grootes, P. M.: Isotopic diffusion in cold snow and firn, *J. Geophys. Res.*, 90, 3910–3918, <https://doi.org/10.1029/JD090iD02p03910>, 1985.
- Whitlow, S., Mayewski, P. A., and Dibb, J. E.: A comparison of major chemical species seasonal concentration and accumulation at the South Pole and summit, Greenland, *Atmos. Environ.*, 26A, 2045–2054, [https://doi.org/10.1016/0960-1686\(92\)90089-4](https://doi.org/10.1016/0960-1686(92)90089-4), 1992.
- Wunsch, C.: Abrupt climate change: an alternative view, *Quaternary Res.*, 65, 191–203, <https://doi.org/10.1016/j.yqres.2005.10.006>, 2006.