



## Regeneration after fire in campo rupestre: Short- and long-term vegetation dynamics

Soizig Le Stradic, Pauline Hernandez, Geraldo Wilson Fernandes, Elise Buisson

### ► To cite this version:

Soizig Le Stradic, Pauline Hernandez, Geraldo Wilson Fernandes, Elise Buisson. Regeneration after fire in campo rupestre: Short- and long-term vegetation dynamics. *Flora*, 2018, 238, pp.191-200. 10.1016/j.flora.2016.12.001 . hal-01795514

**HAL Id: hal-01795514**

**<https://hal.science/hal-01795514>**

Submitted on 18 May 2018

**HAL** is a multi-disciplinary open access archive for the deposit and dissemination of scientific research documents, whether they are published or not. The documents may come from teaching and research institutions in France or abroad, or from public or private research centers.

L'archive ouverte pluridisciplinaire **HAL**, est destinée au dépôt et à la diffusion de documents scientifiques de niveau recherche, publiés ou non, émanant des établissements d'enseignement et de recherche français ou étrangers, des laboratoires publics ou privés.

## Title

Regeneration after fire in *campo rupestre*: short- and long-term vegetation dynamics.

## Authors

Soizig Le Stradic<sup>1,2,3</sup>, Pauline Hernandez<sup>1</sup>, G. Wilson Fernandes<sup>3,4</sup>, Elise Buisson<sup>1</sup>

<sup>1</sup> IMBE - Institut Méditerranéen de Biodiversité et d'Ecologie marine et continentale, Université d'Avignon et des Pays de Vaucluse, CNRS, IRD, Aix Marseille Univ, Agroparc BP 61207, 84911, Avignon, France.

<sup>2</sup> Laboratorio de Fenologia, Departamento de Botânica / Instituto de Biociências, UNESP – Universidade Estadual Paulista, Rio Claro SP, CP 199, Brazil.

<sup>3</sup> Ecologia Evolutiva e Biodiversidade, Universidade Federal de Minas Gerais, Belo Horizonte, MG, 30161-901, Brazil.

<sup>4</sup> Department of Biology, Stanford University, Stanford, CA 94305 USA.

## Abstract

The Cerrado (Brazilian savanna) is the second largest biome in Brazil, recovering 22% of the country, and *campo rupestre* is one of the most biodiverse ecosystem. *Campo rupestre* are extremely old mountaintop tropical ecosystems, composed of a mosaic of herbaceous, shrubland and savanna vegetation, generally located above 900 m above sea level characterized by shallow, acidic and nutrient-poor soils. In the context of increased land-use changes, effective conservation and management projects appear necessary to guarantee the conservation of these ecosystems. Although fire is a natural disturbance in *campo rupestre*, the effects of fire on vegetation dynamics remain poorly understood. Our objective was to assess the effects of fire on vegetation recovery and plant composition at both the short- and long-term on the main herbaceous vegetation types: the sandy and stony grasslands. We monitored plant community composition before and after a wildfire in order to assess the short-term vegetation recovery. Diachronic analyses of grasslands burnt at various dates were used to understand the effects of fire on longer-term vegetation dynamics. Our results highlighted a rapid recovery of *campo rupestre* vegetation after wildfires, suggesting a high adaptation to fire of plant communities. We did not find a significant variation in species richness of sandy grasslands according to time after fire, whereas higher species richness was observed in the recently burnt stony grasslands. No changes in plant composition of *campo rupestre* in response to fire was found, probably due to the high heterogeneity of this ecosystem. After fire, biomass gradually increased over time in both vegetation types. High biomass accumulation could lead to stronger fires. Further studies are necessary to understand the relationship between biomass accumulation and fire intensity in *campo rupestre* in order to set up adapted fire management strategies to conserve *campo rupestre* biodiversity.

**Keywords:** Biomass; *campo arenoso*; *campo pedregoso*; rupestrian grasslands; vegetation recovery; wildfire

## 43 1. Introduction

44 The Brazilian Cerrado is the world's most species-rich savanna, which originally covered over  
 45 2 million km<sup>2</sup> (Oliveira and Marquis, 2002). It is composed of a mosaic of ecosystems  
 46 influenced by the interaction between climate, soil and fire (Oliveira and Marquis, 2002),  
 47 ranging from the most open ecosystems, such as *campo limpo* grasslands, to ecosystems that  
 48 show higher tree density, i.e. *cerradão* woodlands (Coutinho, 1978). The Cerrado has already  
 49 lost ca. 50% of its area to soybean and maize plantation and to cattle raising (Carvalho et al.,  
 50 2009; Fernandes, 2016), but only 2.85% of its total surface is located in fully protected  
 51 conservation units (Bustamante, 2015). The protection of the remaining land therefore appears  
 52 as a high conservation priority (Bitencourt et al., 2016; Mittermeier et al., 2011).

53 In savanna ecosystems, fire is a common endogenous disturbance (*sensu* McIntyre and  
 54 Hobbs, 1999), i.e. disturbances to which the system has been exposed repeatedly through  
 55 evolutionary time and that can maintain the biodiversity under an appropriate regime (Bond et  
 56 al., 2003; Hoffmann et al., 2012; Mistry, 2000; Ratnam et al., 2011; Sankaran et al., 2005). In  
 57 such fire-prone environments, plants species may present adaptive strategies that can improve  
 58 their resilience capacity (i.e. implying a notion of both resistance and recovery *sensu* Hodgson  
 59 et al., 2015) in the face of recurrent fires. These adaptive strategies include belowground  
 60 meristematic and storage organs, thick corky bark, sclerophyllous leaves, fire resistant seeds,  
 61 ability to resprout, and specialized flowering and fruiting phenologies (Bond and Keeley, 2005;  
 62 Miranda et al., 2002; Oliveira et al., 2016).

63 Since the Cerrado flora, like many other savannas, has been assembled along with  
 64 recurrent fires (Oliveira and Marquis, 2002; Simon et al., 2009), it seems essential to include  
 65 fire in conservation management plans (Figueira et al., 2016; Overbeck et al., 2005; Ramos-  
 66 Neto and Pivello, 2014; Ribeiro and Figueira, 2011). This requires the identification of  
 67 adequate fire regimes (e.g. season of fire, frequency) as variation in fire regimes can induce  
 68 changes in plant community composition or structure and/or in ecosystem functioning  
 69 (Gorgone-Barbosa et al., 2015; Lehmann et al., 2008). By removing biomass, fire opens gaps  
 70 necessary for germination and reduces competition for light and the dominance of few species,  
 71 allowing the establishment and persistence of numerous other species (Fidelis et al., 2010;  
 72 Grubb, 1977; Knox and Clarke, 2006; Overbeck et al., 2005). Fire ecology (i.e. fire effects and  
 73 fire regimes) of some Cerrado ecosystems has been widely studied (Hoffmann, 1996;  
 74 Hoffmann et al., 2012; Miranda et al., 2002; Mistry et al., 2005; Oliveras et al., 2012; Ramos-  
 75 Neto and Pivello, 2014). However, such precise information is not available for *campo rupestre*  
 76 grasslands. Understanding how fire impacts vegetation composition and structure can help to  
 77 improve environment policies related to fire and thus future actions within reserves and  
 78 national parks (Figueira et al., 2016; Ribeiro and Figueira, 2011).

79 *Campo rupestre* are part of the Cerrado biome and can be defined as a mosaic of  
 80 herbaceous and savanna vegetations with shrubland on rocky outcrops (Fig. S1). This  
 81 ecosystem establishes at altitudes above 900 m a.s.l., mainly along the Espinhaço range in  
 82 eastern Brazil, (Silveira et al., 2016) and originally covered 66,447 km<sup>2</sup> (Bitencourt et al., 2016;  
 83 Silveira et al., 2016). *Campo rupestre* are species-rich ecosystems, established on shallow and  
 84 oligotrophic, quartzite-derived soils with successive periods of water logging during the rainy  
 85 season and water deficit during the dry season (Le Stradic et al., 2015a; Oliveira et al., 2015).  
 86 Previous studies have already evaluated fire effects at the population-level for some species  
 87 (Alves and Kolbek, 2010; Conceição et al., 2013; Conceição and Orr, 2012; Ferreira and

Conceição, 2012; Miola et al., 2010; Neves et al., 2011; Simon and Amaral, 2003). Overall, the effects of fire on *campo rupestre* grassland plant communities are still poorly understood (Figueira et al., 2016; Ribeiro and Figueira, 2011). To our knowledge only two studies described the effects of fire on *campo rupestre* plant communities. One of them, was based on a floristic survey complemented by plant collection and field observation (Kolbek and Alves, 2008) whereas the other one discussed the strategies of regeneration and investigated the composition and structure vegetation in a recently burnt area but did not present pre-fire data (Neves and Conceição, 2010). These studies concluded that vegetation cover and plant family composition in burnt *campo rupestre* recover rapidly after fire, mainly because many plant species have various adaptations to resprout from underground storage organs after fire. However, it appears that fire, in combination with grazing, can lead to invasion by an African grass (*Melinis minutiflora*) (Gorgone-Barbosa et al., 2016, 2015).

In this study, we aim to provide a precise assessment of the effects of fire on vegetation recovery and composition at both the short- and long-terms on the main herbaceous vegetation types: the sandy and stony grasslands. On the short-term, plant community composition was monitored before and two and five months after a wildfire to assess vegetation recovery. We used diachronic analyses of grasslands burnt at various dates to study the effects of fire on vegetation dynamics on the long-term (up to 25 years after the last fire).

## 2. Material and methods

### 2.1. Study sites

The study was conducted in a *campo rupestre* located along and within the National Park of Serra do Cipó, about 100 km northeast of Belo Horizonte, southeastern Brazil (19° 15'–25'S and 43° 30'–40'W). The climate of the area is tropical altitudinal climate with an average annual rainfall of ca. 1622 mm mainly concentrated during the rainy season extending from November to April; the dry season extends from May to October (Madeira and Fernandes, 1999). The annual average temperature is 21.2°C (Madeira and Fernandes, 1999). All study sites are at altitudes between 1100 and 1420 m and 12 km separate the most distant sites. We studied the two dominant herbaceous vegetations of *campo rupestre*: the sandy grasslands (Sa) and the stony grasslands (St) (Fig. S1). These grasslands are subjected to frequent fires, leading to a mosaic of grassland patches burnt at different dates. According to Figueira et al. (2016) the peak frequency of fire return time in the Serra do Cipó National Park is seven years, indicating that the area is moderately susceptible to fire.

### 2.2. Plant community composition and aboveground biomass sampling

In order to obtain accurate data on short-term fire effects on plant communities, we monitored permanent plots in one stony and one sandy grassland site (Table 1), before and after a wildfire which occurred in August 2011 (sites are highlighted by \* in Table 1). In each grassland site, vegetation surveys were carried out in ten 1-m<sup>2</sup> quadrats prior to fire, in February 2009, and twice after the fire, in October 2011 (i.e. two months after fire) and January 2012 (i.e. five months after fire).

To study long-term vegetation dynamics after fire, we sampled 12 stony and 12 sandy grassland sites between January and March 2012. Three replicates sites of four different times since last fire constituted the 12 sites of each vegetation type: (a) burnt less than a year ago, in 2011, (b) burnt 5 years ago, in 2007, (c) burnt 11 years ago, in 2001 and (d) unburnt in the past 25 years, last burn dated at least in 1987 (Table 1). The sites were selected using a map of fire occurrence made from satellite images collected over the past 25 years and made available by the National

Park of Serra do Cipó. On each site, ten 1-m<sup>2</sup> randomly placed quadrats were used to assess the plant community.

For both short-term and long term study, within each quadrat all angiosperm species were identified and their percent cover visually assessed based on the vertical projection of all aerial plant parts (Mueller-Dombois and Ellenberg, 1974).

Above-ground plant biomass was assessed in three 0.4 × 0.4 m randomly placed quadrats in each site. All biomass above 5mm of the ground was clipped and bagged separately for each quadrat. Living and dry biomass were separated in the laboratory. Biomass was weighed after oven-drying at 60 °C for 48 h.

### 2.3. Statistical analyses

Statistical analyses were conducted separately for the sandy grasslands (Sa) and the stony grasslands (St) considering the large difference in species composition between the two types of *campo rupestre* (Le Stradic et al., 2015a). All statistical analyses were performed in software R Version 3.2.1 (R Core Team, 2015), using stats, vegan (Oksanen et al., 2016) and lme4 (Bates et al., 2015) packages.

#### 2.3.1 Short-term effect of a fire passage

We ran generalized linear mixed models (glmer in the R package lme4) with a Poisson error distribution, a log-link function and random effect for quadrats (Crawley, 2007), to assess variation of species richness before and after fire (prior to fire in February 2009, two months after fire in October 2011, and five months after fire in January 2012). For each grassland type, analyses of variance (ANOVA) for repeated measures and pairwise comparisons with p values adjustments according to Holm correction were used on the data of percentage cover over time, including quadrats as random effect. Percentage cover data were arcsine transformed to meet the assumptions of statistical analyses.

Dissimilarities between vegetation composition before and after fire were assessed using ANOVA-style analysis Adonis. Adonis (i.e. Multivariate ANOVA based on dissimilarities) is an analysis which implements a multivariate analysis of variances using distances matrices, to study the differences in group means and performs permutation tests to inspect the significances of the differences observed (Oksanen et al., 2016). Adonis function informs whether the groups consistently differ in their community composition. Adonis analyses were performed using Bray-Curtis dissimilarity to calculate distance matrices based on vegetation data (quadrat × species abundance matrices); it ranges from 0 and 1 and tends towards 1 as the dissimilarity between plant communities increases (Bray and Curtis, 1957).

Correspondence Analyses (CA) were performed to detect and visualize changes in plant community composition, structure, and recovery for each vegetation type. The two CAs (i.e. one for each vegetation type, with the matrix of species cover in sandy grasslands = 30 observations × 81 species and the matrix of stony grasslands = 30 observations × 69 species) were performed using data before fire (February 2009) and after fire (October 2011 and January 2012).

#### 2.3.2 Long-term fire effects

Effects of time since last fire on mean species richness (number of species/m<sup>2</sup>) and mean vegetation cover were assessed using Generalized Linear Models (glm) with a Poisson distribution for richness and a Gaussian distribution for vegetation cover. Time since last fire

((a) burnt less than a year ago (2011), (b) burnt 5 years ago (2007), (c) burnt 11 years ago (2001) and (d) unburnt in the past 25 years) was defined as the categorical explanatory variable.

Analyses of variance (ANOVA) and Tukey post-hoc tests were performed to compare biomass (i.e. total and dry biomass) according to time since last fire. Parametric conditions were tested for each grassland type using Shapiro-Wilk test of normality and Bartlett's test for homogeneity of variance. Where necessary, data were log-transformed to meet the assumptions of statistical analyses.

As previously explained, dissimilarities between vegetation composition according to time since last fire were analyzed using ANOVA-style analysis Adonis. We performed Constrained Correspondence Analyses (CCA, i.e. Correspondence Analyses with including a conditioning matrix) to detect and visualize changes in plant community composition and structure with time since last fire, including a conditioning matrix of altitude, the effect of which was removed (Oksanen, 2011). The two CCAs (i.e. one for each grassland type, with the matrix of species cover in sandy grasslands = 120 observations  $\times$  229 species and the matrix of stony grasslands = 120 observations  $\times$  233 species) were thus performed on the vegetation data collected in 2012 to assess differences between sites according to time since last fire (i.e. burnt less than a year ago (2011), burnt 5 years ago, burnt 10 years ago and unburnt in the past 25 years).

### 3. Results

#### 3.1. Short-term effect of fire

Species richness and vegetation cover recovered quickly after fire. For both vegetation types, species richness showed a clear significant decrease just after fire from more than 30 species/m<sup>2</sup> on average in February 2009 and less than 20 species/m<sup>2</sup> in October 2001 (Fig. S1). However, five months after fire, in January 2012, species richness significantly increased to values close to pre-fire ones (glmer  $z_{Sa} = 59.69$ ,  $p_{Sa} < 0.001$ ; glmer  $z_{St} = 62.91$ ,  $p_{St} < 0.001$ , Fig. 1a, Fig. S1). Vegetation cover was low two months after fire but increased significantly ( $F_{Sa} = 68.59$ ,  $p_{Sa} < 0.001$ ;  $F_{St} = 19.88$ ,  $p_{St} < 0.001$ , Fig. 1b, Fig. S1) to reached, five months after fire, values similar to pre-disturbance level on the stony grassland and values close to the pre-disturbance level on the sandy grassland (Fig. 1b, Fig. S1).

Five months after fire, vegetation composition and structure of both communities, did not differ from the pre-disturbance state, and returned to be very similar to the pre-disturbance state (Table 2, Fig. 2 & 3, Table S1). No significant difference in terms of composition was found between plots sampled prior to fire, and two and five months after fire (Table 2). The CA revealed that the species composition of each quadrat of both grassland types sampled before fire and five months after fire were very similar (Fig. 2 & 3).

#### 3.2. Long-term vegetation dynamics after fire

Species richness remained stable in sandy grasslands over 25 years (glm procedure  $z_{Sa} = 96.27$ ,  $p = 0.9$ ) but decreased with time since last fire on the stony grasslands (glm procedure  $z_{St} = 133.04$ ,  $p < 0.001$ ), with a higher species richness on recently burnt grasslands (i.e. less than 5 years ago, in 2011 and 2007) and lower species richness on grasslands burnt more than 11 years ago (Fig. 4a). Total vegetation cover strongly increased with time since last fire on sandy grasslands (glm procedure  $F_{Sa} = 97.27$ ,  $p < 0.001$ , Fig. 4b) while it slightly decreased on stony grasslands (glm procedure  $F_{St} = 34.76$ ,  $p < 0.001$ , Fig. 4b).

Species composition and community structure differed according to the date of the last fire (Table 3). For both vegetation types, species composition in the most recently burnt sites (< 1 year) and sites burnt less than 5 years before were more similar (Table 3). In the two vegetation types, main differences in terms of vegetation composition were found between grasslands burnt 11 years prior to the study (2001) and grasslands unburnt in the past 25 years (Table 3).

CCA performed on sandy grassland data highlighted that recently burnt areas (2011 and 2007 i.e. burnt less than 5 years ago) were similar in terms of species composition (Fig. 5), and two of the three sites that were unburnt in the past 25 years were grouped together (Fig. 5, see also Table S2). On stony grasslands, only two of the three sites unburnt in the past 25 years showed a divergent composition compared to the other sites (Fig. 6). All other sites, although different in species composition, did not show divergent plant composition according to time since last fire (Fig. 6, see also Table S2).

There was almost twice more biomass in sandy grasslands than on stony grasslands in sites unburnt at last for 25 years (Fig. 7). Total biomass and dry biomass increased significantly with time since the last fire in both vegetation types (Fig. 7). While total and dry biomass increased gradually over time on stony grasslands ( $F = 6.30$ ,  $p < 0.001$  for total biomass, and  $F = 5.69$ ,  $p < 0.001$  for dry biomass; Fig. 7), on sandy grasslands, both the total and dry biomass remained stable for the first 11 years but doubled between 1987 and 2001, due to an important increase of dry biomass ( $F = 12.74$ ,  $p < 0.001$  for total biomass and  $F = 13.37$ ,  $p < 0.001$  for dry biomass; Fig. 7).

#### 4. Discussion

The sandy and stony grasslands are two different habitat types within *campo rupestre* ecosystem (Le Stradic et al., 2015a), and both of them recover quickly, c.a. of five months, after wildfire in terms of species richness and community composition, which corroborates previous studies (Kolbek and Alves, 2008; Neves and Conceição, 2010). The high resumption capacity of both plant communities implies that most of the species are able to rapidly regenerate after fire. Vegetation cover on stony grasslands is naturally lower than that on sandy grasslands, because quartzitic rocks overlay a large share of the ground (Le Stradic et al., 2015a), that is why, in stony grasslands, vegetation reaches pre-fire cover values in only five months. On the other hand, vegetation cover is denser on sandy grasslands and, although our results show a delay for vegetation recovery in sandy grasslands, vegetation cover reaches values similar to pre-disturbance quite quickly as well.

Our study shows that fire is not related to an increase in species richness in *campo rupestre*, and community composition remains very similar before and after fire, contrary to subtropical grasslands in southern Brazil where fire can lead to a short-term increase in species richness, mainly through a reduction in plant competition and an increase in recruitment right after the fire (Overbeck et al., 2005). While some species seem to be slightly favored in the early post-fire environment, such as Poaceae or Cyperaceae which produce flowers and fruits in the weeks following a fire (personal observation), no post-fire colonization by opportunistic species has been observed. In many fire-prone environments, the recruitment processes of many species are restricted to the first post-fire year, as these processes are stimulated by factors related to fire (Bond et al., 1984; Bond and van Wilgen, 1996; Hobbs and Atkins, 1990; Knox and Clarke, 2006). In Australia or South Africa, fire regimes increase seedling emergence of shrubs (Bond et al., 1984; Bond, 1984; Hobbs and Atkins, 1990; Knox and Clarke, 2006). Although no study has dealt so far with recruitment processes after fire in *campo rupestre*, potential increase in

recruitment of some *campo rupestre* species may not be due to fire-triggered germination (Fidelis et al., 2016; Le Stradic et al., 2015b) but instead because some species present fire-stimulated flowering and fruiting (Conceição and Orr, 2012; Fidelis and Blanco, 2014; Lamont and Downes, 2011; Le Stradic et al., 2015b).

In the present case, the regeneration of the original community appears mostly driven by the persistence of resprouters. In fire-prone environments, plant community assemblages contains species that are able 1) to resprout from any plant structure such as rhizomes, root buds, stem buds, etc. and persist via vegetative regeneration, i.e. resprouters, or 2) to thrive in and to recolonize a site through sexual reproduction and to persist at species level by seeds, i.e. seeders (Bell, 2001; Keeley and Fotheringham, 2000; Pausas et al., 2004). Whereas it has been usually neglected in favor of the 'regeneration niche', our results support the idea of the 'persistence niche' i.e. regeneration and persistence *in situ* is mainly due to species resprouting ability (Bond and Midgley, 2001). Resprouting ability is a key trait for persistence at the population level, enabling species to survive diverse disturbance regimes. It may result in a strong impact on community re-assembly, especially in fire-prone environments (Bond and Midgley, 2001; Clarke et al., 2013). Most of the species in sandy and stony grasslands are perennial species that resprout quickly after fire (Le Stradic et al., 2015a), which could explain the limited changes in terms of species richness observed in our plant communities; once established, perennial species do not necessary rely on seed germination to be maintained in the system, and therefore might be less impacted by biomass accumulation and shade.

No significant change in species richness over time was found in sandy grasslands, while only a slight decrease in species richness was observed in stony grasslands unburnt for more than 25 years. A decrease in species richness with time since last fire was expected (Bond and Keeley, 2005; Uys et al., 2004), especially because some plant species with high light requirements should be negatively affected by shade produced by increasing biomass. Competition generated by some dominant species and the accumulated biomass over time may limit the germination of annual species (Overbeck et al., 2005), as well as the persistence and growth of some herbaceous *campo rupestre* species that are not tolerant to shade. Stony grassland species might be more sensitive to competition for light because stony grasslands are naturally more open vegetation, inducing a negative correlation between species richness and biomass production (Overbeck et al., 2005).

While vegetation composition varied between the different study sites, including between recently burnt areas and unburnt areas, no clear pattern was observed in terms of fire impacts. It can result from the fact that vegetation composition analysis highlighted first the natural heterogeneity of *campo rupestre* plant communities (Le Stradic et al., 2015a) rather than the effect of fire on community composition. *Campo rupestre* are patchy plant communities under the control of local topography, nature of substrate, soil depth and fires (Fernandes, 2016; Le Stradic et al., 2015a; Neves and Conceição, 2010; Silveira et al., 2016). *Campo rupestre* are located on mountaintops and represent isolated islands where species endemism and narrow species endemism are common (Alves and Kolbek, 1994; Barbosa et al., 2015), leading to very high heterogeneity in plant community composition even at small spatial scale. Studies of long-term fire impacts on vegetation dynamics is therefore challenging. Natural heterogeneity of community composition and fire patchiness hampers greatly to detangle the effects of fire from the geographic localization of the plots. Long-term experimental studies using controlled burnings would be more appropriated to study the impact of fire on plant species composition in *campo rupestre*.



Similarly to our results, studies have shown that fire occurs due to fine fuel accumulation and many ignition sources (Figueira et al., 2016). As stony grasslands naturally present a higher level of bare ground compared to sandy grasslands (Le Stradic et al., 2015a), biomass accumulation in this type of vegetation is lower. Values of total biomass in *campo rupestre* varied between 200 g.m<sup>-2</sup> and 400 g.m<sup>-2</sup>, which are similar to those found in *campo sujo* (i.e. open vegetation physiognomy) (Conceição and Pivello, 2011). However, without any fire for a long time period (i.e. >25 years), total biomass in sandy grasslands doubles, reaching values above 800 g.m<sup>-2</sup>, which are similar to those in wet grasslands in Brazilian savanna without fire occurrence for four years (Fidelis et al., 2013). This implies that fire suppression over a long time period should lead to high biomass accumulation. Throughout the world, prescribed burning policy in fire-prone environments have resulted in a large accumulation of biomass, an increase of fuel load and in severe wildfires (Van Wilgen et al., 1998). In *campo rupestre*, the absence of sustainable fire management will probably lead to biological impoverishment (Figueira et al., 2016).

Whereas fire should be managed as a necessary conservation tool, prescribed burning is a matter of debate in Brazil (Durigan and Ratter, 2016; Figueira et al., 2016). Fire can be used to protect sensitive vegetation, some *campo rupestre* species (Conceição et al., 2013; Conceição and Orr, 2012) and to maintain community dynamics (Oliveras et al., 2012). However, fire can also lead to severe damages for some populations in case of inappropriate fire regimes (Silveira et al., 1999). Oliveras et al. (2012) suggested that an interval of at least 3 to 4 years between each burn can be a sustainable fire regime, allowing the reestablishment plant communities to a pre-burn condition of some Cerrado ecosystems. In the case of *campo rupestre*, further studies are needed to assess what fire regimes should be applied to maintain biodiversity and ecosystem services and what fire management strategy should be taken to avoid deleterious fires and conserve *campo rupestre* (but see Figueira et al., 2016). In order to guarantee conservation of their biodiversity and ecosystems services that have been severely threatened by fire suppression policy, the definition and implementation of a clear fire management policy is urgently necessary, especially in conservation units of cerrado and associated vegetation as the *campo rupestre* (Durigan and Ratter, 2016).

## Acknowledgments

We thank the National Park of Serra do Cipó for having made their fire map available to us and two anonymous reviewers and Fernando O. A. Silveira for improving greatly the manuscript. This work was carried out with grants from the Conselho Nacional de Pesquisa (CNPq) [CNPq 561883/2010-6], Fundação de Amparo à Pesquisa do Estado de Minas Gerais (FAPEMIG), RTP CNRS-CEMAGREF “Ingénierie Ecologique” [Ecological Engineering] SAVER – SAVanna Ecological Restoration, Natural Reserva Vellozia and the Ministère Français des affaires étrangères et européennes (EGIDE)[EGIDE 2009/657176K].

## References

- Alves, R.J.V., Kolbek, J., 2010. Vegetation strategy of *Vellozia crinita* (Velloziaceae). *Biologia (Bratisl)*. 65, 254–264. doi:10.2478/s11756-010-0005-y
- Alves, R.J. V., Kolbek, J., 1994. Plant species endemism in savanna vegetation on table mountains (Campo Rupestre) in Brazil. *Vegetatio* 113, 125–139. doi:10.1007/BF00044230
- Barbosa, N.P. de U., Fernandes, G.W., Sanchez-Azofeifa, A., 2015. A relict species restricted

357 to a quartzitic mountain in tropical America: an example of microrefugium? *Acta Bot.*  
358 *Brasilica* 29, 299–309. doi:10.1590/0102-33062014abb3731

359 Bates, D., Mächler, M., Bolker, B., Walker, S., 2015. Fitting linear mixed-effects models  
360 using lme4. *J. Stat. Softw.* 67. doi:10.18637/jss.v067.i01

361 Bell, D.T., 2001. Ecological response syndromes in the flora of southwestern Western  
362 Australia: Fire resprouters versus reseederers. *Bot. Rev.* 67, 417–440.  
363 doi:10.1007/BF02857891

364 Bitencourt, C., Rapini, A., Santos Damascena, L., De Marco Junior, P., 2016. The worrying  
365 future of the endemic flora of a tropical mountain range under climate change. *Flora -*  
366 *Morphol. Distrib. Funct. Ecol. Plants* 218, 1–10. doi:10.1016/j.flora.2015.11.001

367 Bond, W., van Wilgen, B., 1996. *Fire and plants*. Chapman & Hall, London.

368 Bond, W., Vlok, J., Viviers, M., 1984. Variation in seedling recruitment of Cape Proteaceae  
369 after fire. *J. Ecol.* 72, 209–221.

370 Bond, W.J., 1984. Fire survival of Cape Proteaceae - influence of fire season and seed  
371 predators. *Vegetatio* 56, 65–74.

372 Bond, W.J., Keeley, J.E., 2005. Fire as a global “herbivore”: the ecology and evolution of  
373 flammable ecosystems. *Trends Ecol. Evol.* 20, 387–394. doi:10.1016/j.tree.2005.04.025

374 Bond, W.J., Midgley, G.F., Woodward, F.I., Hoffman, M.T., Cowling, R.M., 2003. What  
375 controls South African vegetation — climate or fire? *South African J. Bot.* 69, 79–91.  
376 doi:10.1016/S0254-6299(15)30362-8

377 Bond, W.J., Midgley, J.J., 2001. Ecology of sprouting in woody plants : the persistence niche.  
378 *Trends Ecol. Evol.* 16, 45–51.

379 Bray, J.R., Curtis, J.T., 1957. An ordination of the upland forest communities of southern  
380 Wisconsin. *Ecol. Monogr.* 27, 325–349. doi:10.2307/1942268

381 Bustamante, M.M.C., 2015. Política de clima negligencia o Cerrado – mais uma vez [WWW  
382 Document]. *Obs. do Clima*. URL [http://www.observatoriodoclima.eco.br/politica-de-](http://www.observatoriodoclima.eco.br/politica-de-clima-negligencia-o-cerrado-mais-uma-vez/)  
383 [clima-negligencia-o-cerrado-mais-uma-vez/](http://www.observatoriodoclima.eco.br/politica-de-clima-negligencia-o-cerrado-mais-uma-vez/)

384 Carvalho, F.M.V., De Marco, P., Ferreira, L.G., 2009. The Cerrado into-pieces: habitat  
385 fragmentation as a function of landscape use in the savannas of central Brazil. *Biol.*  
386 *Conserv.* 142, 1392–1403. doi:10.1016/j.biocon.2009.01.031

387 Clarke, P.J., Lawes, M.J., Midgley, J.J., Lamont, B.B., Ojeda, F., Burrows, G.E., Enright,  
388 N.J., Knox, K.J.E., 2013. Resprouting as a key functional trait: how buds, protection and  
389 resources drive persistence after fire. *New Phytol.* 197, 19–35. doi:10.1111/nph.12001

390 Conceição, A.A., Alencar, T.G., Souza, J.M., Moura, A.D.C., Silva, G.A., 2013. Massive  
391 post-fire flowering events in a tropical mountain region of Brazil: high episodic supply  
392 of floral resources. *Acta Bot. Brasilica* 27, 847–850. doi:10.1590/S0102-  
393 33062013000400025

394 Conceição, A.A., Orr, B.J., 2012. Post-fire flowering and fruiting in *Vellozia sincorana*, a  
395 caulescent rosette plant endemic to Northeast Brazil. *Acta Bot. Brasilica* 26, 94–100.

396 Conceição, A.A., Pivello, V.R., 2011. Biomassa combustível em campo sujo no entorno do  
397 Parque Nacional da Chapada Diamantina, Bahia, Brasil. *Biodiversidade Bras.* 2, 146–  
398 160.

399 Coutinho, L.M., 1978. O conceito de cerrado. *Rev. Bras. Botânica* 1, 17–23.

400 Crawley, M.J., 2007. *The R Book.*, John Wiley. ed. Chichester.

401 Durigan, G., Ratter, J.A., 2016. The need for a consistent fire policy for Cerrado  
402 conservation. *J. Appl. Ecol.* 53, 11–15. doi:10.1111/1365-2664.12559

403 Fernandes, G.W., 2016. *Ecology and conservation of mountaintop grasslands in Brazil.*  
404 Springer International Publishing, Switzerland. doi:10.1007/978-3-319-29808-5

405 Ferreira, M.M.A. de A.S., Conceição, A.A., 2012. Alocação preferencial de recursos e  
406 morfologia de órgãos subterrâneos em plantas resistentes ao fogo em vegetação  
407 campestre. *Sitientibus série Ciências Biológicas* 12, 143–149.

408 Fidelis, A., Blanco, C., 2014. Does fire induce flowering in Brazilian subtropical grasslands?  
409 *Appl. Veg. Sci.* 17, 690–699. doi:10.1111/avsc.12098

410 Fidelis, A., Daibes, L.F., Martins, A.R., 2016. To resist or to germinate? The effect of fire on  
411 legume seeds in Brazilian subtropical grasslands. *Acta Bot. Brasilica* 30, 147–151.  
412 doi:10.1590/0102-33062015abb0187

413 Fidelis, A., Lyra, M.F. di S., Pivello, V.R., 2013. Above- and below-ground biomass and  
414 carbon dynamics in Brazilian Cerrado wet grasslands. *J. Veg. Sci.* 24, 356–364.  
415 doi:10.1111/j.1654-1103.2012.01465.x

416 Fidelis, A., Müller, S.C., Pillar, V.D., Pfadenhauer, J., 2010. Population biology and  
417 regeneration of forbs and shrubs after fire in Brazilian Campos grasslands. *Plant Ecol.*  
418 211, 107–117. doi:10.1007/s11258-010-9776-z

419 Figueira, J.E.C., Ribeiro, K.T., Ribeiro, M.C., Jacobi, C.M., França, H., Neves, A.C. de O.,  
420 Conceição, A.A., Mourão, F.A., Souza, J.M., Miranda, C.A. de K., 2016. Fire in  
421 rupestrian grasslands: plant response and management, in: Fernandes, G.W. (Ed.),  
422 *Ecology and Conservation of Mountaintop Grasslands in Brazil.* Springer International  
423 Publishing, Switzerland, pp. 415–448.

424 Gorgone-Barbosa, E., Pivello, V.R., Baeza, M.J., Fidelis, A., 2016. Disturbance as a factor in  
425 breaking dormancy and enhancing invasiveness of African grasses in a Neotropical  
426 Savanna. *Acta Bot. Brasilica* 30, 131–137. doi:10.1590/0102-33062015abb0317

427 Gorgone-Barbosa, E., Pivello, V.R., Bautista, S., Zupo, T., Rissi, M.N., Fidelis, A., 2015.  
428 How can an invasive grass affect fire behavior in a tropical savanna? A community and  
429 individual plant level approach. *Biol. Invasions* 17, 423–431. doi:10.1007/s10530-014-  
430 0740-z

431 Grubb, P.J., 1977. The maintenance of species-richness in plant communities: the importance  
432 of the regeneration niche. *Biol. Rev.* 52, 107–145. doi:10.1111/j.1469-  
433 185X.1977.tb01347.x

434 Hobbs, R.J., Atkins, L., 1990. Fire-related dynamics of a *Banksia* woodland in south-western  
435 western Australia. *Aust. J. Bot.* 38, 97–110. doi:http://dx.doi.org/10.1071/BT9900097

436 Hodgson, D., McDonald, J.L., Hosken, D.J., 2015. What do you mean, “resilient”? Trends  
437 Ecol. Evol. 30, 503–506. doi:10.1016/j.tree.2015.06.010

438 Hoffmann, W.A., 1996. The effects of fire and cover on seedling establishment in a  
439 Neotropical Savanna. J. Ecol. 84, 383–393. doi:10.2307/2261200

440 Hoffmann, W.A., Geiger, E.L., Gotsch, S.G., Rossatto, D.R., Silva, L.C.R., Lau, O.L.,  
441 Haridasan, M., Franco, A.C., 2012. Ecological thresholds at the savanna-forest  
442 boundary: how plant traits, resources and fire govern the distribution of tropical biomes.  
443 Ecol. Lett. 15, 759–768. doi:10.1111/j.1461-0248.2012.01789.x

444 Keeley, J.E., Fotheringham, C.J., 2000. Role of fire in regeneration from seed, in: Fenner, M.  
445 (Ed.), Seeds: The Ecology of Regeneration in Plant Communities. CABI publishing,  
446 Wallingford, pp. 311–330.

447 Knox, K.J.E., Clarke, P.J., 2006. Fire season and intensity affect shrub recruitment in  
448 temperate sclerophyllous woodlands. Oecologia 149, 730–739. doi:10.1007/s00442-006-  
449 0480-6

450 Kolbek, J., Alves, J.R.V., 2008. Impacts of cattle, fire and wind in rocky savannas,  
451 southeastern Brazil. Acta Univ. Carolinae Environ. 22, 111–130.

452 Lamont, B.B., Downes, K.S., 2011. Fire-stimulated flowering among resprouters and  
453 geophytes in Australia and South Africa. Plant Ecol. 212, 2111–2125.  
454 doi:10.1007/s11258-011-9987-y

455 Le Stradic, S., Buisson, E., Fernandes, G.W., 2015a. Vegetation composition and structure of  
456 some Neotropical mountain grasslands in Brazil. J. Mt. Sci. 12, 864–877.  
457 doi:10.1007/s11629-013-2866-3

458 Le Stradic, S., Silveira, F.A.O., Buisson, E., Cazelles, K., Carvalho, V., Fernandes, G.W.,  
459 2015b. Diversity of germination strategies and seed dormancy in herbaceous species of  
460 campo rupestre grasslands. Austral Ecol. 40, 537–546. doi:10.1111/aec.12221

461 Lehmann, C.E.R., Prior, L.D., Williams, R.J., Bowman, D.M.J.S., 2008. Spatio-temporal  
462 trends in tree cover of a tropical mesic savanna are driven by landscape disturbance. J.  
463 Appl. Ecol. 45, 1304–1311. doi:10.1111/j.1365-2664.2008.01496.x

464 Madeira, J., Fernandes, G.W., 1999. Reproductive phenology of sympatric taxa of  
465 Chamaecrista ( Leguminosae ) in Serra do Cipo. J. Trop. Ecol. 15, 463–479.

466 McIntyre, S., Hobbs, R., 1999. A framework for conceptualizing human effects on  
467 landscapes and its relevance to management and research models. Conserv. Biol. 13,  
468 1282–1292. doi:10.1046/j.1523-1739.1999.97509.x

469 Miola, D.T.B., Correia, H.V.L., Fernandes, G.W., Negreiros, D., 2010. The effect of fire on  
470 phenology of *Syagrus glaucescens* Glaz. ex Becc. (Arecaceae). Neotrop. Biol. Conserv.  
471 5, 146–153. doi:10.4013/4759

472 Miranda, H.S., Bustamante, M.M.C., Miranda, A.C., 2002. The fire factor, in: Oliveira, P.S.,  
473 Marquis, R.J. (Eds.), The Cerrados of Brazil: Ecology and Natural History of a  
474 Neotropical Savanna. Columbia University Press, pp. 51–68.

475 Mistry, J., 2000. World savannas: ecology and human use. Routledge, New York.

476 Mistry, J., Berardi, A., Andrade, V., Krahô, T., Krahô, P., Leonardos, O., 2005. Indigenous  
 477 fire management in the cerrado of Brazil: the case of the Krahô of Tocantins. *Hum.*  
 478 *Ecol.* 33, 365–386. doi:10.1007/s10745-005-4143-8

479 Mittermeier, R.A., Turner, W.R., Larsen, F.W., Brooks, T.M., Gascon, C., 2011. Global  
 480 biodiversity conservation: the critical role of hotspots, in: Zachos, F.E., Habel, J.C.  
 481 (Eds.), *Biodiversity Hotspots: Distribution and Protection of Conservation Priority*  
 482 *Areas*. Springer Science & Business Media, Berlin, pp. 3–22.

483 Mueller-Dombois, D., Ellenberg, H., 1974. *Aims and methods of vegetation ecology*. John  
 484 Wiley & Sons, New York.

485 Neves, A.C.O., Bedê, L.C., Martins, R.P., 2011. Revisão sobre os efeitos do fogo em  
 486 *Eriocaulaceae* como subsídio para a sua conservação. *Biodiversidade Bras.* 2, 50–66.

487 Neves, S.P.S., Conceição, A.A., 2010. Campo rupestre recém-queimado na Chapada  
 488 Diamantina, Bahia, Brasil : plantas de rebrota e sementes, com espécies endêmicas na  
 489 rocha. *Acta Bot. Brasilica* 24, 697–707.

490 Oksanen, J., 2011. *Multivariate Analysis of Ecological Communities in R : vegan tutorial*.

491 Oksanen, J., Blanchet, F.G., Kindt, R., Legendre, P., Minchin, P.R., O'Hara, R.B., Simpson,  
 492 G.L., Solymos, P., Wagner, M., Stevens, H.H., Wagner, H., 2016. *Vegan: community*  
 493 *ecology package [WWW Document]*. R Packag. version 2.3-3. URL [http://cran.r-](http://cran.r-project.org/package=vegan)  
 494 [project.org/package=vegan](http://cran.r-project.org/package=vegan)

495 Oliveira, P.S., Marquis, R.J., 2002. *The Cerrados of Brazil. Ecology and natural history of a*  
 496 *neotropical savanna*. Columbia University Press, New York.

497 Oliveira, R.S., Abrahão, A., Pereira, C., Teodoro, G.S., Brum, M., Alcantara, S., Lambers,  
 498 H., 2016. *Ecophysiology of Campos Rupestres Plants*, in: Fernandes, G.W. (Ed.),  
 499 *Ecology and Conservation of Mountaintop Grasslands in Brazil*. Springer International  
 500 Publishing, Switzerland, pp. 227–272.

501 Oliveira, R.S., Galvão, H.C., de Campos, M.C.R., Eller, C.B., Pearse, S.J., Lambers, H.,  
 502 2015. Mineral nutrition of campos rupestres plant species on contrasting nutrient-  
 503 impoverished soil types. *New Phytol.* 205, 1183–1194. doi:10.1111/nph.13175

504 Oliveras, I., Meirelles, S.T., Hirakuri, V.L., Freitas, C.R., Miranda, H.S., Pivello, V.R., 2012.  
 505 *Effects of fire regimes on herbaceous biomass and nutrient dynamics in the Brazilian*  
 506 *savanna*. *Int. J. Wildl. Fire* 22, 368–380. doi:10.1071/WF10136

507 Overbeck, G.E., Müller, S.C., Pillar, V.D., Pfadenhauer, J., 2005. Fine-scale post-fire  
 508 dynamics in southern Brazilian subtropical grassland. *J. Veg. Sci.* 16, 655–664.  
 509 doi:10.1658/1100-9233(2005)016[0655:FPDISB]2.0.CO;2

510 Pausas, J.G., Bradstock, R.A., Keith, D.A., Keeley, J.E., The GCTE (Global Change of  
 511 Terrestrial Ecosystems) Fire Network, 2004. Plant functional traits in relation to fire in  
 512 crown-fire ecosystems. *Ecology* 85, 1085–1100.

513 R Core Team, 2015. *R: A language and environment for statistical computing [WWW*  
 514 *Document]*. R Found. Stat. Comput. Austria. URL <http://www.r-project.org/>.

515 Ramos-Neto, M.B., Pivello, V.R., 2014. Lightning fires in a Brazilian savanna national park:

- 516 rethinking management strategies. *Environ. Manage.* 26, 675–684.  
517 doi:10.1007/s002670010124
- 518 Ratnam, J., Bond, W.J., Fensham, R.J., Hoffmann, W.A., Archibald, S., Lehmann, C.E.R.,  
519 Anderson, M.T., Higgins, S.I., Sankaran, M., 2011. When is a “forest” a savanna , and  
520 why does it matter ? *Glob. Ecol. Biogeogr.* 20, 653–660. doi:10.1111/j.1466-  
521 8238.2010.00634.x
- 522 Ribeiro, M.C., Figueira, J.E.C., 2011. Uma abordagem histórica do fogo no parque nacional  
523 da Serra do Cipó, Minas Gerais – Brasil. *Biodiversidade Bras.* 1, 212–227.
- 524 Sankaran, M., Hanan, N.P., Scholes, R.J., Ratnam, J., Augustine, D.J., Cade, B.S., Gignoux,  
525 J., Higgins, S.I., Le Roux, X., Ludwig, F., Ardo, J., Banyikwa, F., Bronn, A., Bucini, G.,  
526 Caylor, K.K., Coughenour, M.B., Diouf, A., Ekaya, W., Feral, C.J., February, E.C.,  
527 Frost, P.G.H., Hiernaux, P., Hrabar, H., Metzger, K.L., Prins, H.H.T., Ringrose, S., Sea,  
528 W., Tews, J., Worden, J., Zambatis, N., 2005. Determinants of woody cover in African  
529 savannas. *Nature* 438, 846–849. doi:10.1038/nature04070
- 530 Silveira, F.A.O., Negreiros, D., Barbosa, N.P.U., Buisson, E., Carmo, F.F., Carstensen, D.W.,  
531 Conceição, A.A., Cornelissen, T.G., Echternacht, L., Fernandes, G.W., Garcia, Q.S.,  
532 Guerra, T.J., Jacobi, C.M., Lemos-Filho, J.P., Le Stradic, S., Morellato, L.P.C., Neves,  
533 F.S., Oliveira, R.S., Schaefer, C.E., Viana, P.L., Lambers, H., 2016. Ecology and  
534 evolution of plant diversity in the endangered campo rupestre: a neglected conservation  
535 priority. *Plant Soil* 403, 129–152. doi:10.1007/s11104-015-2637-8
- 536 Silveira, L., Rodrigues, F.H.G., Jácomo, A.T.A., Filho, J.A.D., 1999. Impact of wildfires on  
537 the megafauna of Emas National Park, central Brazil. *Oryx* 33, 108–114.
- 538 Simon, M.F., Amaral, M.F., 2003. *Mimosa splendida* Barneby (Mimosoideae, Leguminosae)  
539 rediscovered in Central Brazil: preliminary studies for conservation of a rare species.  
540 *Brazilian J. Bot.* 26, 93–96. doi:10.1590/S0100-84042003000100010
- 541 Simon, M.F., Grether, R., Queiroz, L.P. De, Skema, C., Pennington, R.T., Hughes, C.E.,  
542 2009. Recent assembly of the Cerrado, a neotropical plant diversity hotspot, by in situ  
543 evolution of adaptations to fire. *Proc Natl Acad Sci U S A* 106, 20359–20364.
- 544 Uys, R.G., Bond, W.J., Everson, T.M., 2004. The effect of different fire regimes on plant  
545 diversity in southern African grasslands. *Biol. Conserv.* 118, 489–499.  
546 doi:10.1016/j.biocon.2003.09.024
- 547 Van Wilgen, B.W., Biggs, H.C., Potgieter, A.L.F., 1998. Fire management and research in  
548 the Kruger National Park, with suggestions on the detection of thresholds of potential  
549 concern. *Koedoe* 41, 69–87. doi:10.4102/koedoe.v41i1.248

550

551 Appendix A. Supplementary material  
 552 Supplementary Table S1: List of plant species occurring on sandy grassland (Sa-C) and stony  
 553 grassland (St-C) surveyed to study short-term fire effects on plant communities, including  
 554 family, species name, plant form and the presence of each species for the three sample date:  
 555 before fire (Feb 2009), two months after fire (Oct 2011) and five months after fire (Jan 2012).  
 556  
 557 Supplementary Table S2: List of plant species occurring on sandy grasslands and stony  
 558 grassland surveyed to study long-term fire effects on plant communities, including family,  
 559 species name, plant form and the presence of each species in sandy or stony grasslands.  
 560  
 561 Supplementary Figure S1: a) General view of *campo rupestre* at Serra do Cipó (Minas  
 562 Gerais, Brazil) with the mosaic of herbaceous and shrubland occurring in these particular  
 563 ecosystems, including sandy grasslands and stony grasslands in the foreground and shrubland  
 564 on rocky outcrops in the background. View of b) quadrats Ca1-5 in sandy grassland and c)  
 565 Cp1-11 in stony grassland in December 2009, before fire and view of the same quadrat d)  
 566 Ca1-5 and e) Cp1-11 in October 2011 and f) Ca1-5 and g) Cp1-11 in January 2012.  
 567

Table 1. Information about study sites including type of vegetation (sandy or stony grasslands), sites name as presented in Fig. 5 & 6, altitude (m), year of the last fire and time since last fire (yr): (<1) burnt less than a year ago, in 2011, (5) burnt 5 years ago in 2007, (11) burnt 11 years ago in 2001 and (>25) unburnt in the past 25 years, with a last burn dated at least in 1987. \* indicates the two sites which were followed more precisely before (February, 2009) and after the fire (October 2011 and January 2012).

Sandy grasslands				Stony grasslands			
Site name	Altitude (m)	Year of the last fire	Time since last fire (yr)	Site name	Altitude (m)	Year of the last fire	Time since last fire (yr)
Sa-A	1299	2011	<1	St-A	1313	2011	<1
Sa-C *	1178	2011	<1	St-C *	1174	2011	<1
Sa-D	1232	2011	<1	St -D	1220	2011	<1
Sa -B	1299	2007	5	St -B	1313	2007	5
Sa -F	1337	2007	5	St -F	1335	2007	5
Sa -L	1362	2007	5	St -L	1353	2007	5
Sa -G	1402	2001	11	St -G	1403	2001	11
Sa -H	1417	2001	11	St -H	1419	2001	11
Sa -I	1347	2001	11	St -I	1348	2001	11
Sa -E	1106	1987	> 25	St -E	1109	1987	> 25
Sa -J	1284	1987	> 25	St -J	1288	1987	> 25
Sa -K	1303	1987	> 25	St -K	1295	1987	> 25



Table 2: Mean Bray-Curtis dissimilarity based on floristic composition between plots before fire (February 2009) and after fire (October 2011 and January 2012), for the two kinds of vegetations, the sandy and the stony grasslands. Results of Adonis analysis (i.e. difference in group means) based on Bray-Curtis dissimilarity (vegetation data) in February 2009, October 2011 and January 2012).

		February 2009	October 2011	Adonis - F	p-value
Sandy grassland					
	October 2011	0.69		1.85	0.069
	January 2012	0.53	0.65		
		February 2009	October 2011	Adonis - F	p-value
Stony grassland					
	October 2011	0.47		0.62	0.700
	January 2012	0.40	0.46		

Table 3: Mean Bray-Curtis dissimilarity based on floristic composition between plots burnt in 2011: burnt less than a year ago, 2007: burnt 5 years ago, 2001: burnt between 11 years ago and 1987: unburnt in the past 25 years, for the two kind of vegetations, the sandy and the stony grasslands. Results of Adonis analysis (i.e. difference in group means) were based on Bray-Curtis dissimilarity (vegetation data).

		1987	2001	2007	Adonis - F	p-value
Sandy grasslands	2001	0.83			10.32	0.0049 **
	2007	0.76	0.79			
	2011	0.71	0.79	0.68		
		1987	2001	2007	Adonis - F	p-value
Stony grasslands	2001	0.87			10.99	0.0049 **
	2007	0.85	0.83			
	2011	0.83	0.84	0.76		

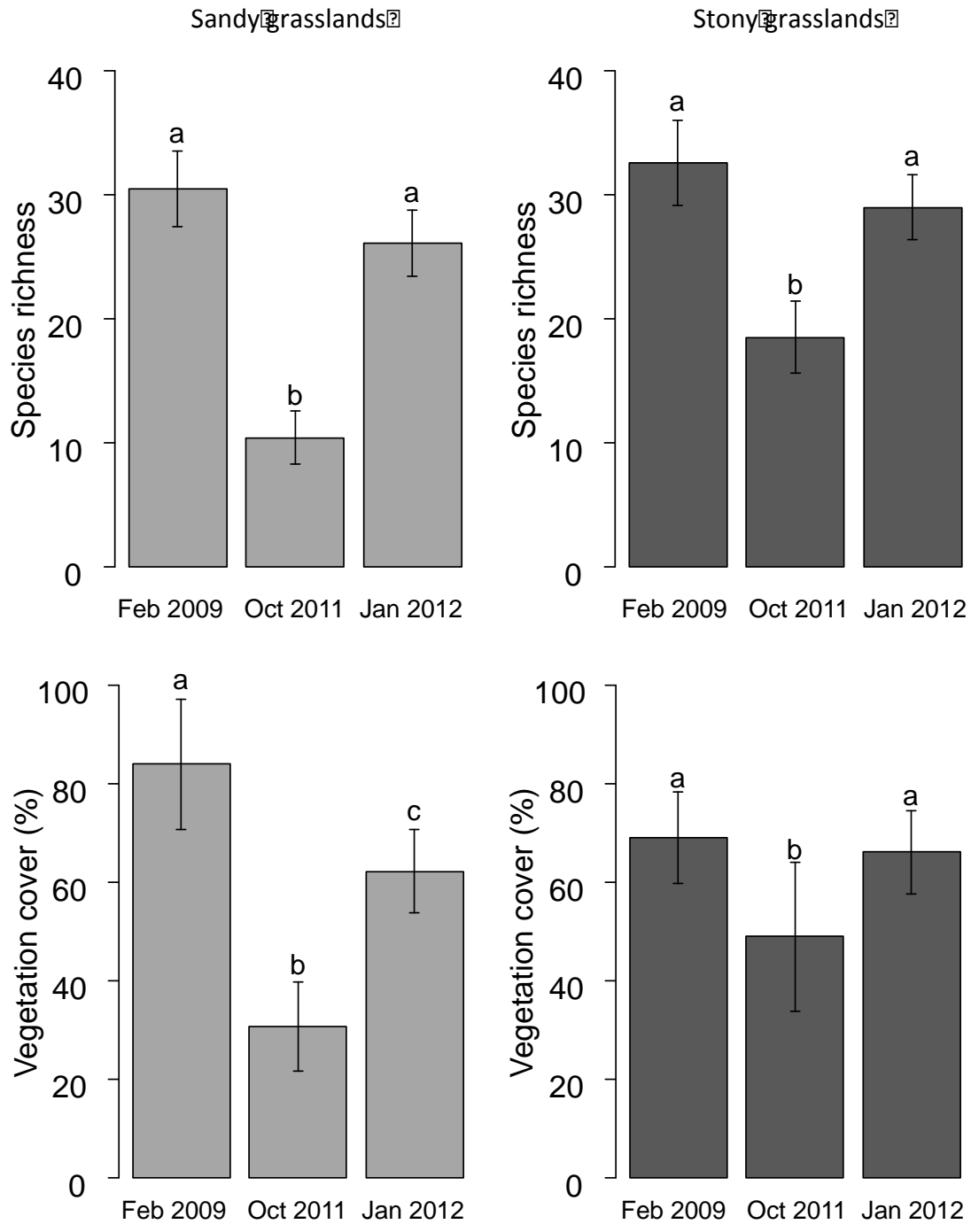


Fig. 1. Short-term impact of a wildfire on a) species richness (in 1m<sup>2</sup>) and b) vegetation cover (cover percentage in 1m<sup>2</sup>) in two types of *campo rupestre* vegetation at Serra do Cipó (Brazil): the sandy grasslands, represented with light grey bars, and the stony grasslands with dark grey bars. Quadrats were sampled before fire (Feb 2009), two months after fire (Oct 2011) and five months after fire (Jan 2012). Means  $\pm$  standard errors are shown. Bars with no letter in common are significantly different according to the glmer procedures and pairwise comparisons ( $p < 0.05$ )

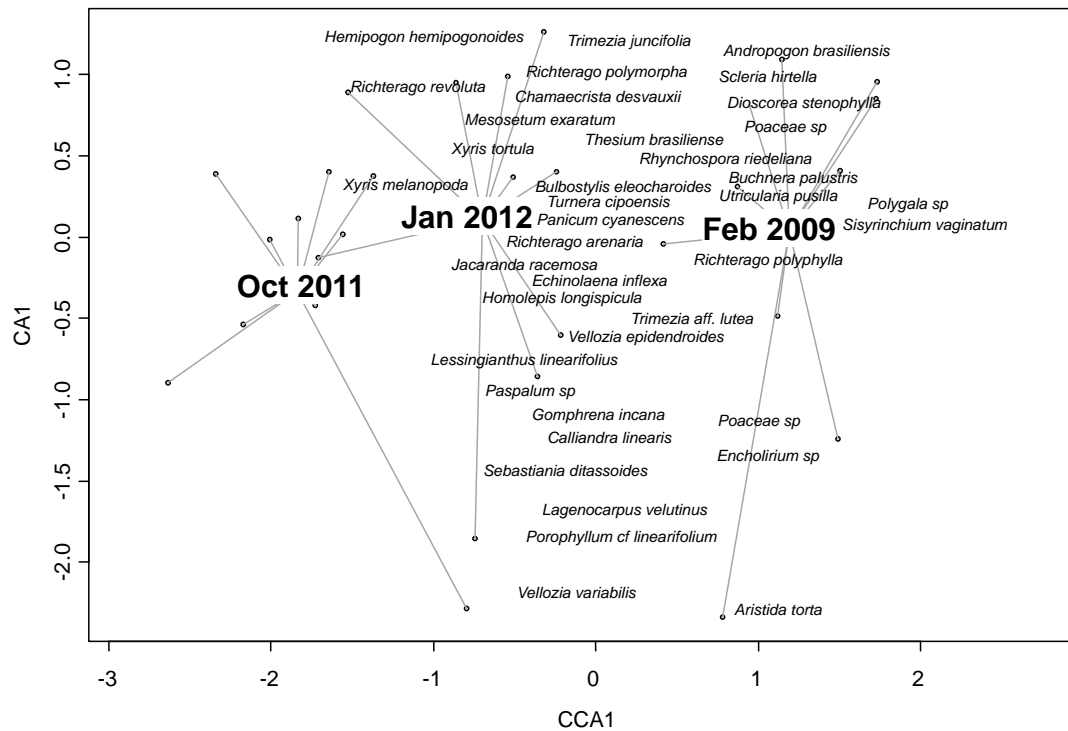


Fig. 2. Correspondence Analysis (CA) based on vegetation survey in ten 1 m<sup>2</sup> permanent plots on sandy grassland [30 observations × 81 species] before fire (Feb 2009), two months after fire (Oct 2011) and five months after fire (Jan 2012). For clarity, only the most correlated species are shown. Barycenters of each sampling date are represented.

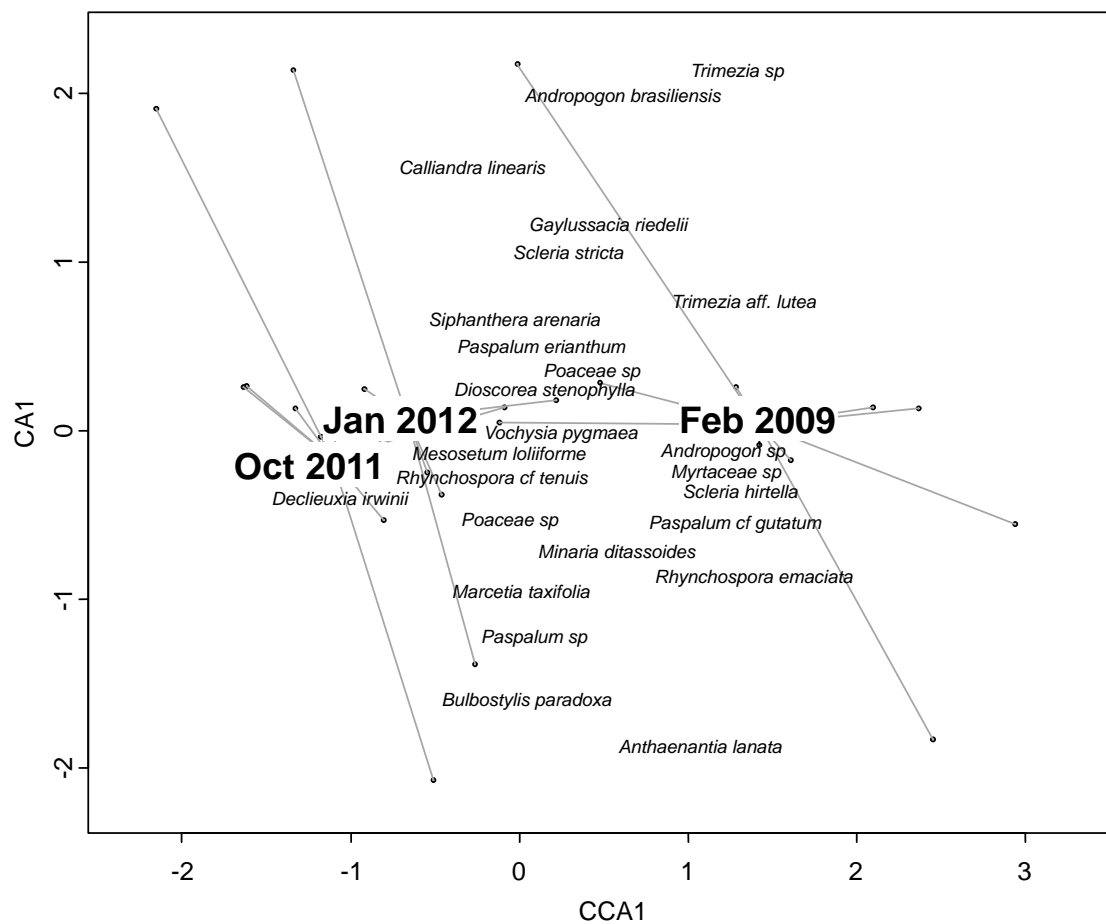


Fig. 3. Correspondence Analysis (CA) based on vegetation survey in ten 1m<sup>2</sup> permanent plots on stony grassland [30 observations × 69 species] before fire (Feb 2009), two months after fire (Oct 2011) and five months after fire (Jan 2012). For clarity, only the most correlated species are shown. Barycenters of each sampling date are represented.

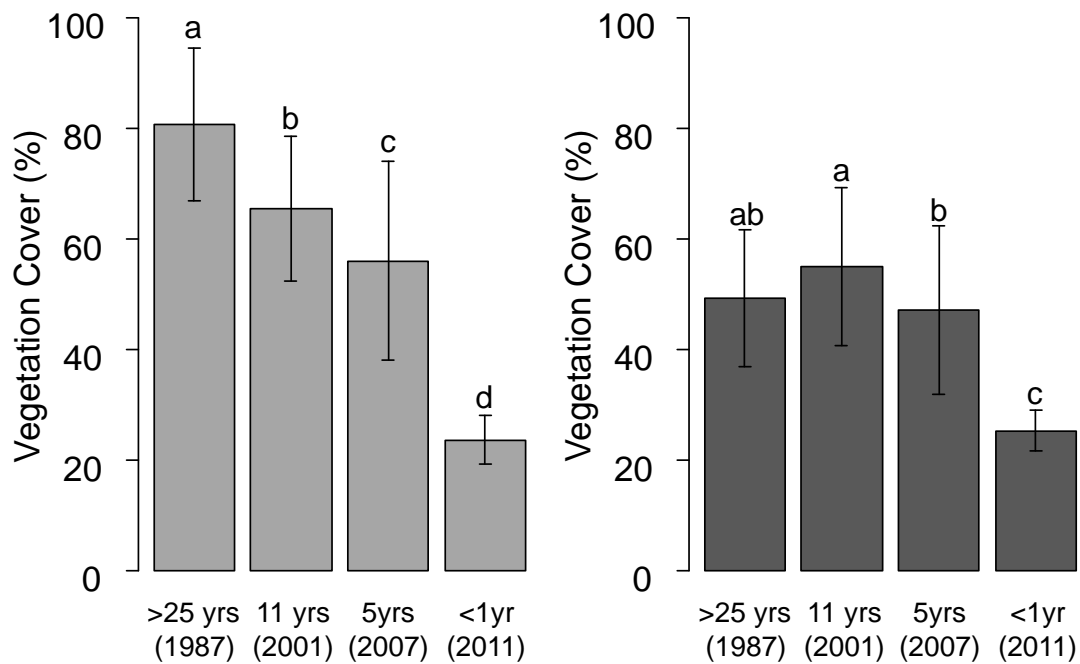
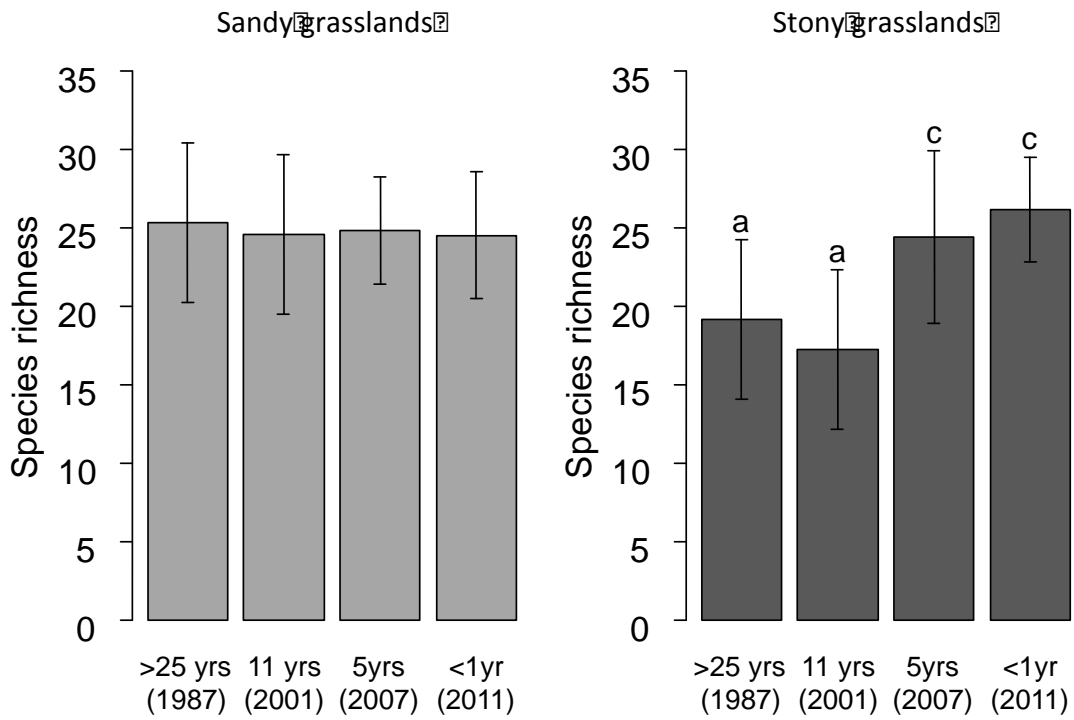


Fig. 4. Long-term impact of wildfires on a) species richness (in 1 m<sup>2</sup>) and b) vegetation cover (cover percentage in 1 m<sup>2</sup>). Two types of *campo rupestre* vegetation at Serra do Cipó (Brazil) are represented: the sandy grasslands, with light grey bars, and the stony grasslands with dark grey bars, according to time since last fire are: unburnt in the past 25 years (1987), burnt 11 years ago (2001), burnt 5 years ago (2007) and burnt less than one year (2011). Means  $\pm$  standard errors are shown. Bars with no letter in common are significantly different according to the glm procedures ( $p < 0.05$ ).

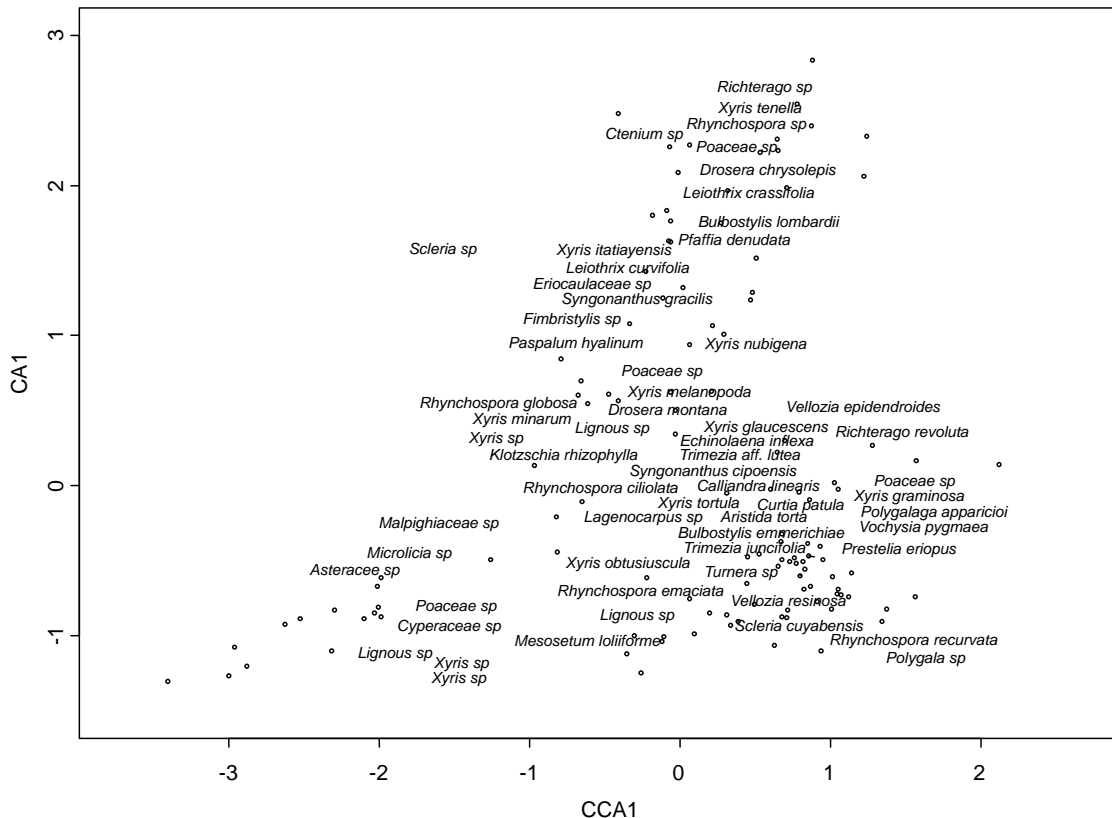
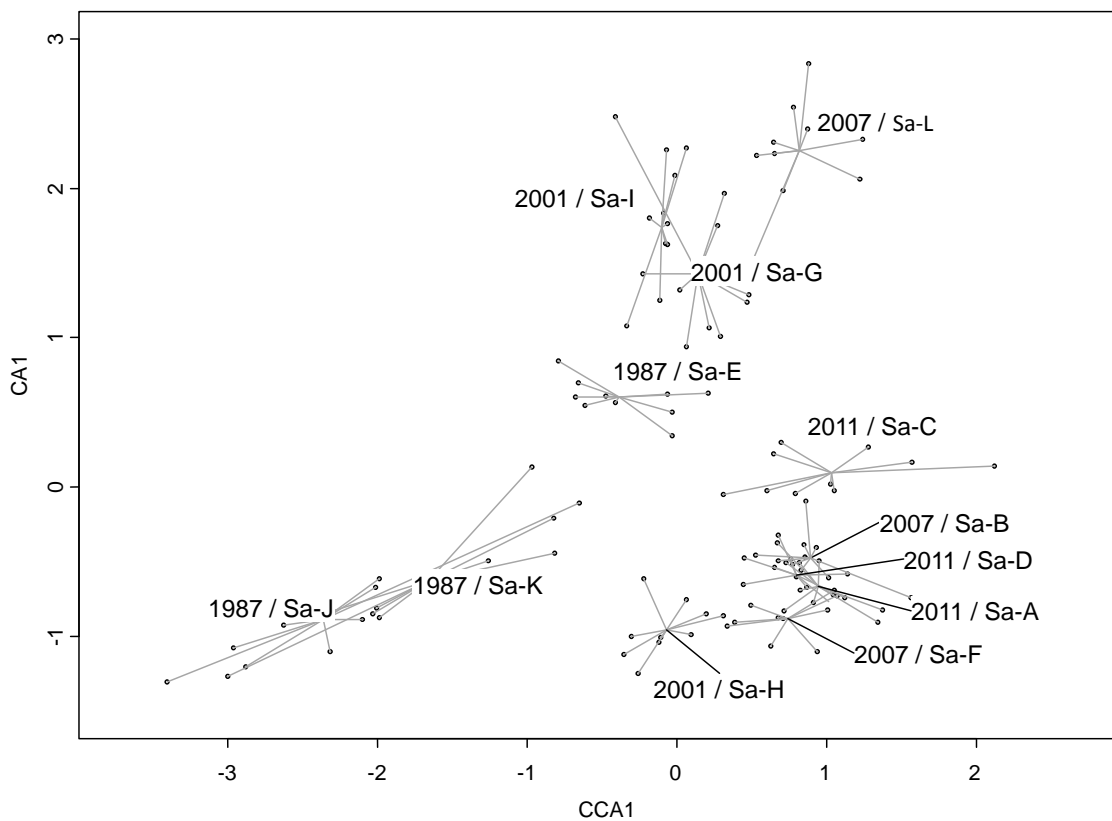


Fig. 5. Constrained Correspondence Analysis (CCA) based on vegetation survey performed on 120 1-m<sup>2</sup> vegetation plots on sandy grasslands [120 observations × 229 species] in sites unburnt in the past 25 years (1987), burnt 11 years ago (2001), burnt 5 years ago (2007) and burnt less than one year (2011). For clarity, barycenters of each sampling site are represented on above graph and only the most correlated species are shown on below graph. Abbreviations (i.e. St-A, B, C, D, E, F, G, H, I, J, K) refer to site name (see table 1).

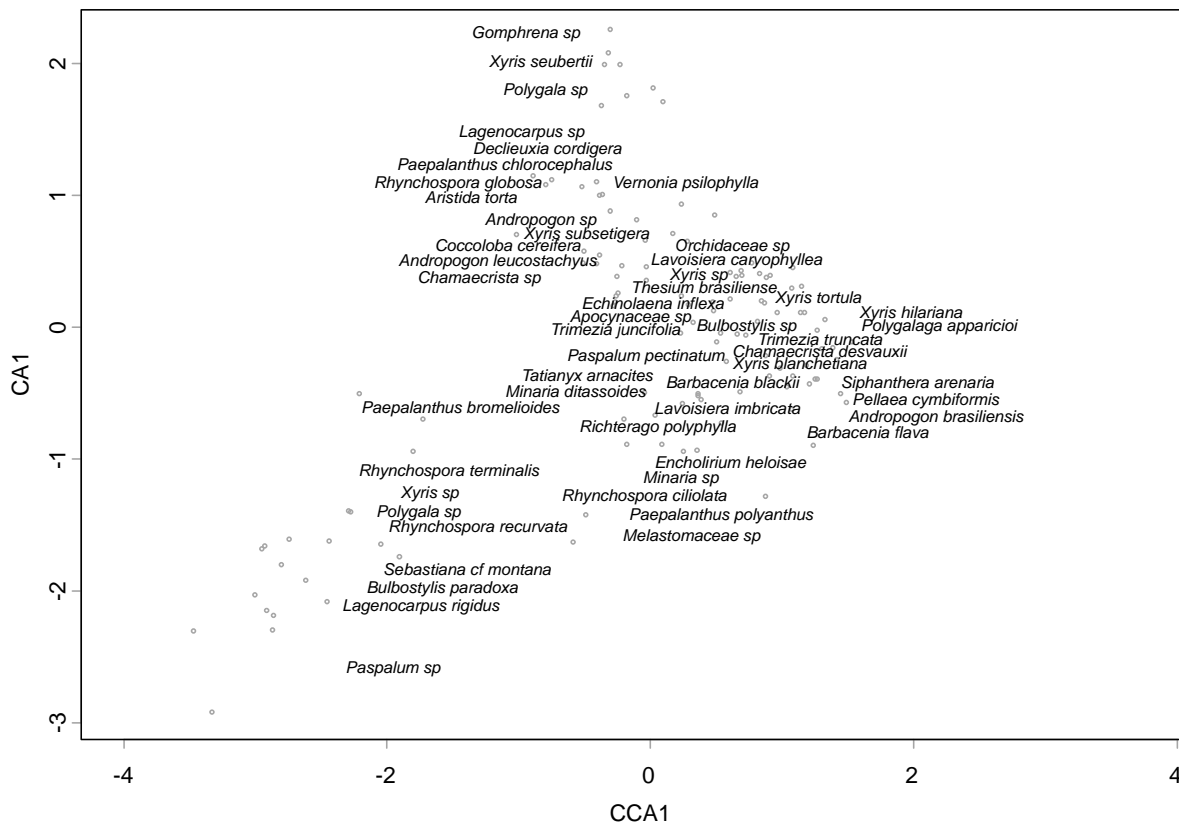
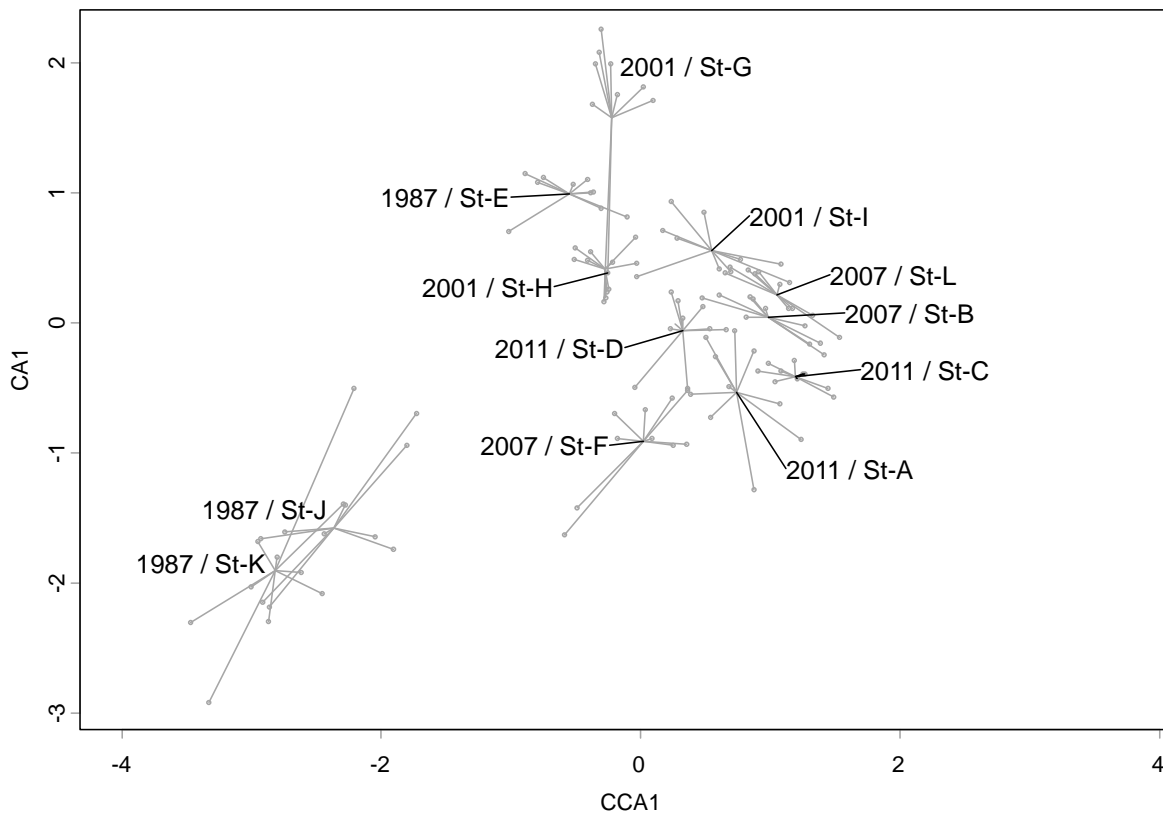


Fig. 6. Constrained Correspondence Analysis (CCA) based on vegetation survey performed on 120 1-m<sup>2</sup> vegetation plots on stony grasslands [120 observations × 233 species] in sites unburnt in the past 25 years (1987), burnt 11 years ago (2001), burnt 5 years ago (2007) and burnt less than one year (2011). For clarity, barycenters of each sampling site are represented on above graph and only the most correlated species are shown on below graph. Abbreviations (i.e. St-A, B, C, D, E, F, G, H, I, J, K) refer to site name (see table 1).



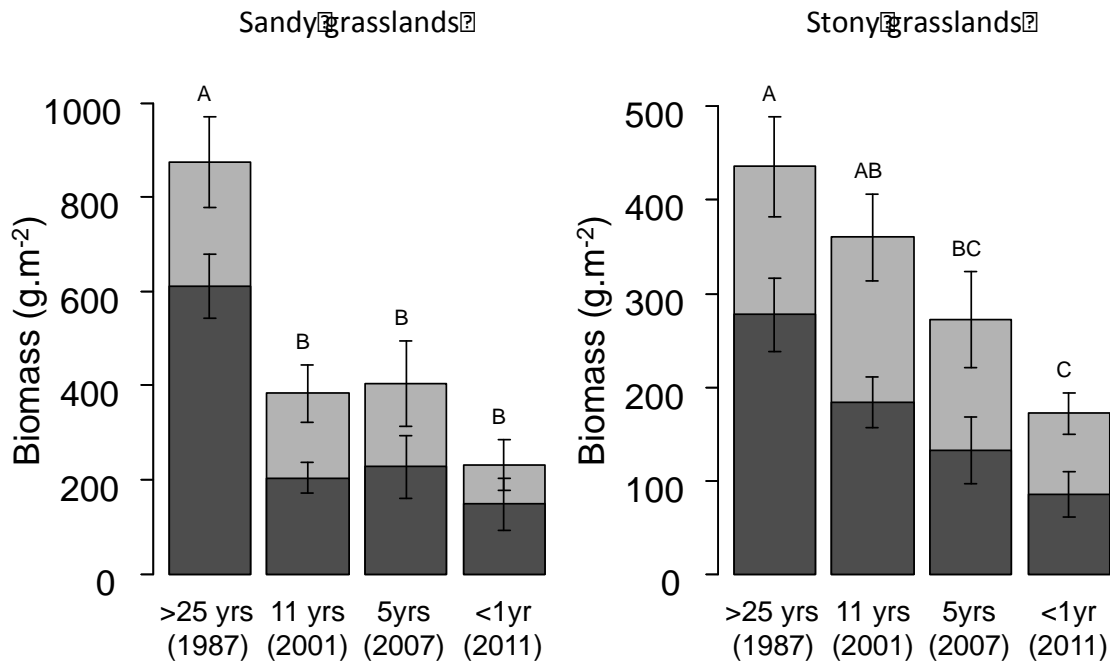


Fig. 7. Total plant biomass (light grey) and dry plant biomass (dark grey) in sandy and stony grasslands at Serra do Cipó (Brazil) in sites unburnt in the past 25 years (1987), burnt 11 years ago (2001), burnt 5 years ago (2007) and burnt less than one year (2011). Means  $\pm$  standard errors are shown. Results of Tukey post-hoc tests performed on total biomass are indicated with letters and were equal than Tukey post-hoc tests performed on dry biomass.