



**HAL**  
open science

## **PanGeneHome: A Web Interface to Analyze Microbial Pangenomes**

Camille Loiseau, Victor Hatte, Charlotte Andrieu, Loic Barlet, Audric Cologne, Romain de Oliveira, Lionel Ferrato-Berberian, H el ene Gardon, Damien Lauber, M elanie Molinier, et al.

### ► **To cite this version:**

Camille Loiseau, Victor Hatte, Charlotte Andrieu, Loic Barlet, Audric Cologne, et al.. PanGeneHome : A Web Interface to Analyze Microbial Pangenomes. *Journal of Bioinformatics, Computational and Systems Biology*, 2017. hal-01786921

**HAL Id: hal-01786921**

**<https://hal.science/hal-01786921>**

Submitted on 7 May 2018

**HAL** is a multi-disciplinary open access archive for the deposit and dissemination of scientific research documents, whether they are published or not. The documents may come from teaching and research institutions in France or abroad, or from public or private research centers.

L'archive ouverte pluridisciplinaire **HAL**, est destin ee au d ep ot et  a la diffusion de documents scientifiques de niveau recherche, publi es ou non,  emanant des  tablissements d'enseignement et de recherche fran ais ou  trangers, des laboratoires publics ou priv es.

# PanGeneHome : A Web Interface to Analyze Microbial Pangenomes

Camille Loiseau<sup>#</sup>, Victor Hatte<sup>#</sup>, Charlotte Andrieu, Loic Barlet, Audric Cologne, Romain De Oliveira, Lionel Ferrato-Berberian, H el ene Gardon, Damien Lauber, M elanie Molinier, St ephanie Monnerie, Kissi N'Gou, Benjamin Penaud, Olivier Pereira, Justine Picarle, Amandine Septier, Antoine Mahul, Jean-Christophe Charvy, and Fran ois Enault<sup>\*</sup>

Department of Biology, Clermont Auvergne University, Clermont-Ferrand, F-63000, France

**Received Date:** October 24, 2017, **Accepted Date:** November 23, 2017, **Published Date:** November 30, 2017.

**\*Corresponding author:** Fran ois Enault, UMR CNRS 6023 Microorganisms: Genome and Environment, Build. A, 24 avenue des Landais, 63177 Aubi ere Cedex. La France, Tel: 33-(0)473-407-471; Fax: 33-(0)473-407-670; E-mail: [francois.enault@uca.fr](mailto:francois.enault@uca.fr).

## Abstract

PanGeneHome is a web server dedicated to the analysis of available microbial pangenomes. For any prokaryotic taxon with at least three sequenced genomes, PanGeneHome provides (i) conservation level of genes, (ii) pangenome and core-genome curves, estimated pangenome size and other metrics, (iii) dendrograms based on gene content and average amino acid identity (AAI) for these genomes, and (iv) functional categories and metabolic pathways represented in the core, accessory and unique gene pools of the selected taxon. In addition, the results for these different analyses can be compared for any set of taxa. With the availability of 615 taxa, covering 182 species and 49 orders, PanGeneHome provides an easy way to get a glimpse on the pangenome of a microbial group of interest. The server and its documentation are available at <http://pangenehome.lmge.uca.fr>.

**Keywords:** Prokaryote pangenome; Comparative genomics; Bioinformatics; Web site

## Introduction

Recent advances in DNA sequencing technology led a rapid accumulation of microbial genomic data. Due to their inherent genomic plasticity, microbial species are now described throughout their pangenome and not just through a unique reference genome ([1–4]; for a review, see [5]). A microbial pangenome is composed of core genes (shared by all strains), dispensable/accessory genes (conserved in two or more strains) and genes unique to single strains. By comparing the number and conservation of genes across multiple genomes, researchers can thus gain insights into the genomic diversity, dynamics and evolution of a microbial taxon. Furthermore, the functional annotations of the core, accessory and unique genes can also be informative.

Several standalone tools (e.g. PGAP [6], PANNOTATOR [7], PanGP [8], Roary [9] and BPGA [10]) and web servers (e.g. Panseq [11], PGAT [12] and PanWeb [13]) dedicated to pangenome analysis have been developed recently and offer the possibility to compute pangenome analysis for genomes provided by a user (for a review of the different existing tools, see [14]). Among these, PGAT [12] is the only web site offering pre-computed pangenome analysis but only nine genus (representing 244 genomes) are available. Thus, as collecting genomes and running these tools implies a significant effort on the user side, we developed PanGeneHome, a Web server that offers precomputed pangenome analysis at a large scale for already sequenced genomes. Browsing PanGeneHome, pangenome analysis results can be directly accessed for any taxonomic level in the bacterial and archaeal trees for which the collection of publicly available genomes is sufficient (> 2 genomes).

## Methods

PanGeneHome provides users with a suite of tools for analyzing the pangenome of a selected taxon. To this end, the 2,674 bacterial and 167 archaeal complete genomes available in KEGG [15]

were processed (Jan 2015). For any taxon (node or leaf) of the bacterial and archaeal trees that include at least three genomes, the pangenome was determined using KEGG Orthologous Clusters (OCs). These OCs were constructed using the 8,912,641 protein coding genes in all complete genomes (~ 3 % of the genes are encoded in plasmids). The KEGG functional categories to which these OCs are affiliated were included. KEGG orthologous (KO) groups [15], was also used to determine distances based on gene content and on the AAI of the shared genes.

The first step for the user is to select a taxon of interest, at any taxonomic level (phylum, class, order, family, genus or species level). This selection is made through a browsable and searchable tree, encoded using the jQuery plugin jsTree (<https://www.jstree.com/>). The different PanGeneHome sections described below were constructed as flat-file databases.

## Gene Conservation

For each taxon, the gene conservation was determined in two ways: (i) the conservation of all OCs of the taxon and (ii) the conservation of OCs in an average genome of this taxon. For a given taxon, the conservation of an OC is the percentage of genomes of this taxon in which this OC appears. These percentages were subsequently used to compute the distribution of the gene conservation for each genome, and these distributions were averaged for all the genomes of the considered taxon. These two results are displayed through interactive histograms with the Highcharts JavaScript library (<http://www.highcharts.com>).

## Pan- and Core-Genome Curves

The pan- and core-genome curves display respectively the total number of different OCs and the number of conserved OCs when considering an increasing number of genomes. When the number of possible genome combination was too large (e.g. there is more than 17 thousand billion different combination of 10 genomes out of 100), a random subset of 1,000 combinations was used. For each genome number considered, the average pan- and core-genome numbers is plotted with the standard deviation being represented by shaded zones around these two curves. Here again, Highcharts library ([www.highcharts.com](http://www.highcharts.com)) was used to display these curves.

In addition, pangenome size, closedness and diversity were estimated using the R package micropan [16]. The Chao method was used to estimate the pan-genome size, a method that gives « a conservative estimate, i.e. it tends to be on the smaller side of the true size » [16]. To predict if a pangenome is open or closed, a Heaps law type of model was used and if the alpha value is below one, the pangenome is considered as open (see [17] for details). Finally, the genomic fluidity [18] was computed to quantify the pangenome diversity.

## Gene Content Tree

The distance between two genomes was defined as the fraction

of genes unique to one of the two strains [19]. In details, for two genomes A and B, we counted the number of genes of A not present in B divided by the total number of genes of A. The dendrogram for each taxon was then determined by applying the PHYLIP Neighbor Joining method [20] to the corresponding distance matrix. To be able to compare evolutionarily distant species, KEGG KOs and not OCs were here considered. The tree for all bacteria is not available as it contains too many genomes (2674) to be visualized. These trees are displayed as circular and linear trees using the jsPhyloSVG JavaScript plugin [21] and full species name can be obtained by mousing over the corresponding leaf.

## AAI

The AAI of the shared genes between all genome pairs was determined as in [22]. Shortly, the identity percentage of all proteins inside a KO were determined using BLASTp [23], and for all genome pairs, the average amino acid identity was computed using all their shared proteins. The AAI between a pair of genomes A and B is thus the average of the amino acid identity using all the pairs of proteins of A and B that are present in the same orthologous group. For each taxon, the resulting AAI matrix was then used to build a dendrogram with the neighbor-joining method (PHYLIP suite [20]). Here again, KEGG KOs were used to enable the comparison of evolutionarily distant species, and dendrograms are displayed using the jsPhyloSVG plugin [21].

## Functional Analysis of Core, Accessory and Unique Genes

The functional annotations of the core, accessory and unique genes, defined here by the OC clustering, can also be displayed and compared. To this end, the KEGG pathway database was used [15]. First, the number and percentages of genes involved in the main categories (e.g. « Metabolism », « Genetic information processing », etc...) of this database were calculated for core, accessory and unique genes and displayed as histograms. Second, similar results were computed for a lower level of the pathway database (e.g. « Carbohydrate metabolism », « Replication and repair », etc.) through curves. These interactive histograms and curves were developed using the Highcharts JavaScript library (www.highcharts.com).

## Pan- and Core-Genome Comparison

Multiple taxa can be selected through an interactive tree, and the corresponding pan- and core-genome curves (defined previously in section 2) are displayed. The different metrics computed are also provided in a table.

## Core Function Comparison

Here again, multiple taxa can be selected through an interactive tree, and the functional annotations of the core genes of each taxon are displayed through Highcharts histograms.

## Results and Discussion

PanGeneHome is a web server where pangenome analyses are available for all taxon that contain at least three sequenced genomes. The 2,841 genomes of KEGG allowed us to determine the pangenome of 10 phyla, 16 classes, 49 orders, 112 families, 164 genera and 182 species. Among these, 100 and 50 genera have respectively at least 5 and 10 sequenced genomes. This is to our knowledge the first web server where pangenomes are processed for all available genomes and for any taxonomic level.

## Details on the Protein Clustering Methods

The identification of orthologs is an important cornerstone for pangenome analysis. Here, two different clustering methods

available in KEGG were used. The main difference between these methods is the granularity of the orthologous groups they produce :

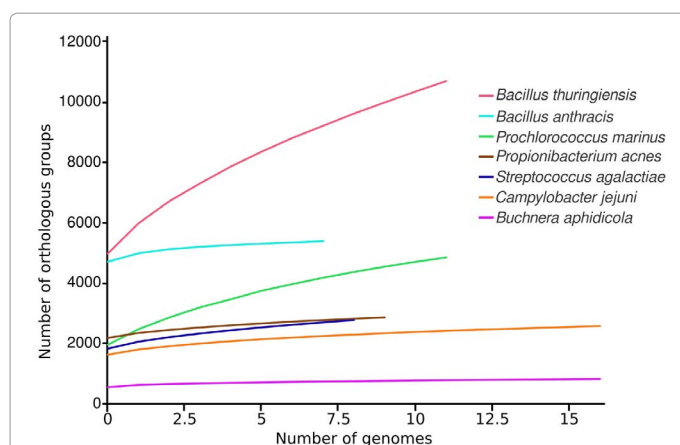
- The OCs are constructed by automatically clustering proteins based on their sequence similarities and using a quasi-clique-based method [24]. All protein coding genes are thus included in the clustering and it produces fine-grained clusters. Indeed, the 8,912,641 KEGG proteins are clustered into 358,067 OCs (295 OCs are larger than 1,000 proteins) and 474,400 proteins remained as singletons.
- Complementary to this clustering into OCs, KEGG proteins are also assigned to KOs based on cross-species genome comparison using the KOALA (KEGG Orthology and Links Annotation) system [15]. The KOs produced do not include all proteins and are much larger than OCs: the 4,381,566 proteins assigned to a KO are clustered into 8,252 different KOs. As a comparison, the same proteins are clustered into 160,669 different OCs.

Contrary to KOs, OCs include all genes and were thus used to determine the different categories of a pangenome in a precise manner (core, accessory and unique genes). As KOs group even distantly related homologs (that are separated into several Ocs), KOs were used in gene content and AAI methods in order to compare evolutionarily distant genomes.

## Pangenome through an Example

To illustrate the results that can be obtained with PanGeneHome, microbial species with various characteristics were here chosen. We selected three species described to have a closed pan-genome, namely *Bacillus anthracis* [17,25], *Buchnera aphidicola* [26] and *Campylobacter jejuni* [27], alongside three species that were described to have an open pangenome, namely *Bacillus thuringiensis* [28], *Propionibacterium acnes* [29] and *Prochlorococcus marinus* [17,30], and the species on which the concept of pangenome was initially tested, *Streptococcus agalactiae* [31].

The pangenome curves (Figure 1) and metrics (Table 1) are very different for these seven species considered. Indeed, the curves for *B. thuringiensis* and *P. marinus* keep increasing, even when more than 10 genomes are considered. Moreover, all metrics point out this trend as the estimated size of their pangenome are large (21,427 and 6,492 genes), their fluidity is larger than the one of the other species (> 0.18) and their Heap value lower (< 0.7). All this indicate that these species do have an open pangenome. Conversely, the pangenome curves of *B. anthracis* and *B. aphidicola* seems to

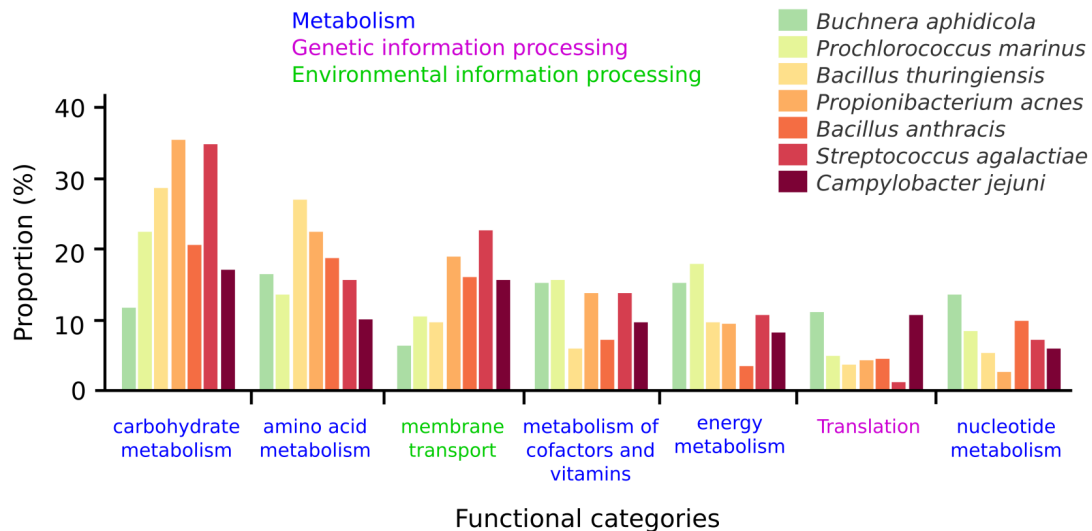


**Figure 1:** Pan-genome curves of seven different bacterial species. The average pan-genome size (i.e. the average number of total orthologous groups) is shown for the indicated number of genomes.

Taxonomy	#Genomes	Chao	Heaps Alpha	Heaps Intercept	Fluidity Mean $\pm$ deviation
<i>Bacillus thuringiensis</i>	12	21427	0.616	1499	0.188 $\pm$ 0.051
<i>Prochlorococcus marinus</i>	12	6492	0.644	792	0.272 $\pm$ 0.103
<i>Propionibacterium acnes</i>	10	3363	0.705	230	0.08 $\pm$ 0.023
<i>Campylobacter jejuni</i>	17	3426	0.812	280	0.11 $\pm$ 0.047
<i>Streptococcus agalactiae</i>	9	4036	0.842	414	0.137 $\pm$ 0.017
<i>Buchnera aphidicola</i>	17	1001	1.342	176	0.15 $\pm$ 0.124
<i>Bacillus anthracis</i>	8	5932	1.703	922	0.059 $\pm$ 0.023

Estimated pangenome size (Chao), closedness (Heaps Alpha and Intercept) and diversity (Genomic fluidity), computed using the R package micropan [16]. Taxon with a heaps alpha value below one are considered to have an open pangenome.

**Table 1:** Estimated pangenome metrics for different bacterial species.

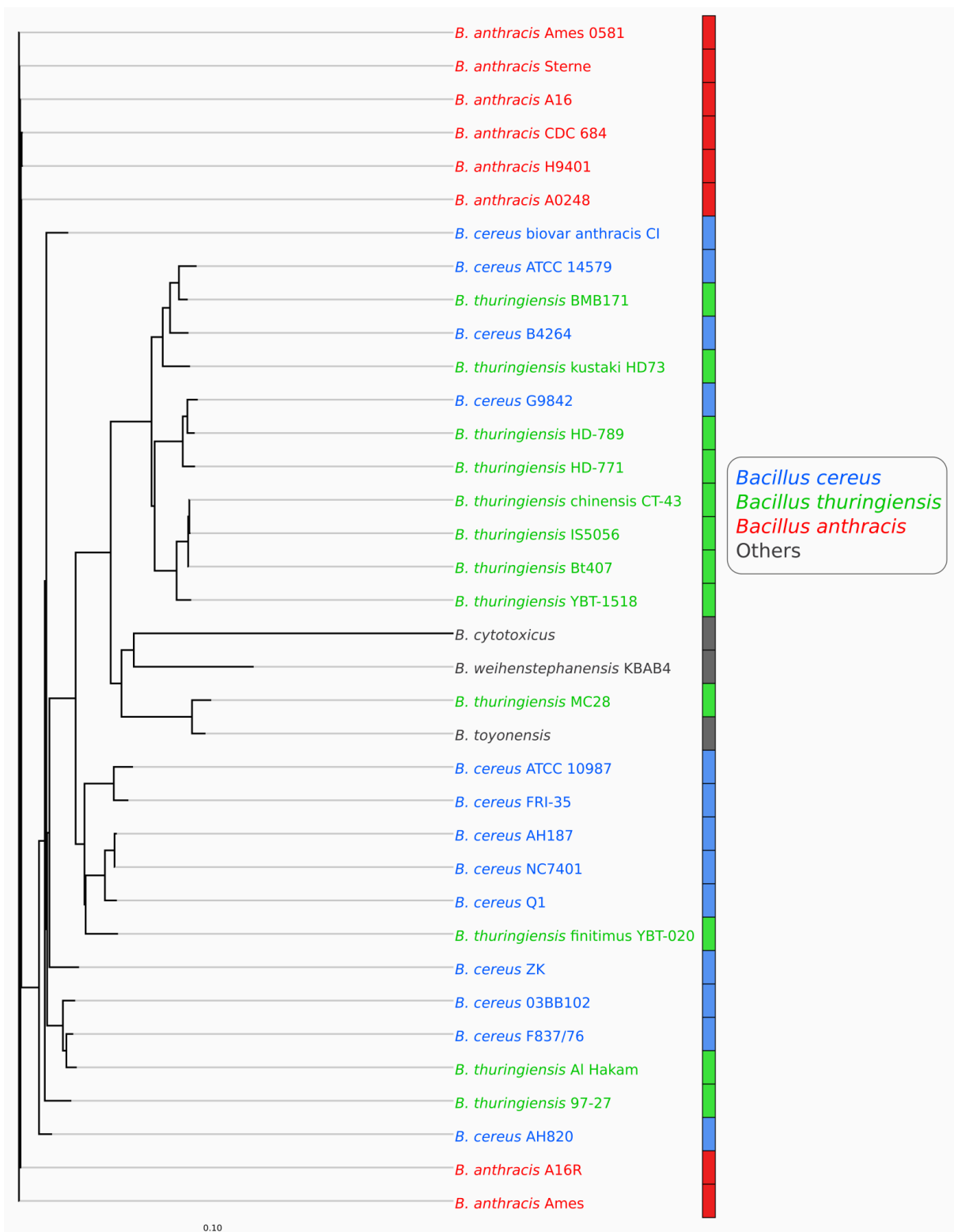


**Figure 2:** Functional categories of the core genes for seven bacterial species. The proportion of core genes involved in the different functional categories are displayed for each of the seven bacterial species selected. The categories are colored accordingly to the broader functional level to which they belong.

reach a plateau. Metrics also tend to show this trend, as their Heaps value are the only ones greater than one. The estimated pangenome of *B. anthracis* (5,932 genes) is this large because the individual genome of these bacteria are large (4,700 genes per genome), and its genomic fluidity is low (0.06). These two very different species in term of genome size and way of life (intracellular / free living) can be described as having a closed pangenome. Finally, the three last species considered here (*C. jejuni*, *P. acnes* and *S. agalactiae*) have similar trends : their pangenome curve have the same slope, their Heap value are lower than the 1 threshold (between 0.7 and 0.85) and the genomic fluidity is between 0.08 and 0.14. Thus, *C. jejuni*, described to have a closed pangenome [32], seems here quite similar to *S. agalactiae* and *P. acnes* that are described to have open pangenomes [17,29]. Moreover, these last two species do not present a pangenome as open as *B. thuringiensis* and *P. marinus* (Figure 1; Table 1). These results show the importance of using the same annotation and clustering methods to have comparable results, as the granularity of the clustering can have a dramatic impact on the pangenome estimate and metrics. It also highlights that each curve taken individually can lead to different interpretation, and comparing results for several species can provide additional information.

Another possibility offered by PanGeneHome is to compare the functional potential of core genes for the selected taxons, as in [33]. When considering the same 7 species, the core gene functions of *Buchnera aphidicola* are the most different to the ones of other species (Figure 2: average correlation of 0.67 between *B. aphidicola* core functional profiles and other species profiles). Indeed,

nearly half of the annotated core genes of *Buchnera aphidicola* are involved in "Genetic information Processing", with 70 of the 157 core genes identified in the 17 genomes of this species being implied in translation. This result is not surprising as *B. aphidicola* is an endosymbiont of aphids that encode less than 600 genes and has lost lots of metabolic potential [34] such as anaerobic respiration, synthesis of phospholipids, complex carbohydrates, etc... The most similar species in terms of functional potential of their core genes are *P. acnes* and *S. agalactiae* (correlation of 0.93 for their functional profiles), two species having comparable pangenome closedness. More surprisingly, *Bacillus thuringiensis* and *Bacillus anthracis* are also similar in terms of functional potential of their core genes (correlation of 0.85) despite having opposite trends in terms of pangenome closedness. These two species belong to the *Bacillus cereus* group (NCBI taxonomy ID = 86661), and are actually thought to be part of the same species [35,36]. The AAI analysis of this "Bacillus cereus group" show that the sequenced strains of *B. anthracis* are more closely related to each other than the *B. thuringiensis* genomes (Figure 3). This last point might be due to the fact that *B. anthracis* strains are selected for culture and sequencing because of a precise phenotype (high toxicity). Selecting only very closely strains based on this phenotype might narrow the diversity of this group and artificially result in a closed pangenome. The fact that the core genes of these two species have similar functions reinforce the fact that the genomic characteristics of these two species might not be so different and that *B. anthracis* should be considered here as a sub-species.



**Figure 3:** Dendrogram based on the AAI. Dendrogram based on the average amino acid identity of the shared genes (AAI) between all genome pairs of the *Bacillus cereus* group. The neighbor-joining method (PHYLIP suite [20]) was applied to the AAI matrix to build a dendrogram.

### Conclusion

A pangenome describes the full complement of genes in a clade or taxon. Even if pangenomes are typically analyzed at the species level, such analyses can be informative at any taxonomic level. PanGeneHome generates visualizations and metrics for

pangenomes for all possible microbial clade, and as many as 615 taxa are available for analysis, including for example 182 different species and 49 different orders.

Pangenome metrics (size, diversity, closedness, etc...) are highly dependent on the genome annotation and protein clustering

methods used. Pangenome studies often focus on one species and the results presented in separate studies are thus hardly comparable. Here, the annotation and clustering methods used were the same for all genomes, and pangenome results can be directly compared. Moreover, as highlighted by the results obtained for two *Bacillus* species, pangenome results should be analyzed in regard of the diversity existing inside each taxon considered. Indeed, considering only evolutionarily close strains for a species will result in a low genomic fluidity and a closed pangenome, and analysis such as AAI should help in deciphering these evolutionary distances. Thus, PanGeneHome provides a comprehensive and uniform framework with a user-friendly interface to explore pangenomes for any microbial taxon, and should help microbiologists to quickly get a glimpse on the genomic plasticity and diversity for a clade of interest.

Considering the fast growing number of microbial genomes, the PanGeneHome tool will need to be updated regularly.

### Authors' Contributions

CL, VH, CA, LB, AC, RDO, LFB, HG, DL, MM, SM, KNG, BP, OP, JP and AS developed the Web site and CL and VH finalized its development. AM and JCC took care of the informatic infrastructure. FE conceived the study, coordinated the work and wrote the manuscript. All authors read and approved the final manuscript.

### Competing Interests

The authors have declared no competing interests.

### Acknowledgements

The authors thank Simon Roux for his careful reading of the manuscript. This research did not receive any specific grant from funding agencies in the public, commercial, or not-for-profit sectors.

### References

1. Udaondo Z, Molina L, Segura A, Duque E, Ramos JL. Analysis of the core genome and pangenome of *Pseudomonas putida*. *Environ Microbiol*. 2016;18(10):3268-3283. doi: 10.1111/1462-2920.13015.
2. Bhardwaj T, Somvanshi P. Pan-genome analysis of *Clostridium botulinum* reveals unique targets for drug development. *Gene*. 2017;623:48-62. doi: 10.1016/j.gene.2017.04.019.
3. Wee WY, Dutta A, Choo SW. Comparative genome analyses of mycobacteria give better insights into their evolution. *PLoS One* 2017;12. doi.org/10.1371/journal.pone.0172831.
4. Uchiyama I, Albritton J, Fukuyo M, Kojima KK, Yahara K, Kobayashi I. A Novel Approach to *Helicobacter pylori* Pan-Genome Analysis for Identification of Genomic Islands. *PLoS One*. 2016;11. doi.org/10.1371/journal.pone.0159419.
5. Rouli L, Merhej V, Fournier PE, Raoult D. The bacterial pangenome as a new tool for analysing pathogenic bacteria. *New Microbes New Infect* 2015;7:72-85. doi: 10.1016/j.nmni.2015.06.005.
6. Zhao Y, Wu J, Yang J, Sun S, Xiao J, Yu J. PGAP: pan-genomes analysis pipeline. *Bioinformatics*. 2012;28(3):416-8. doi: 10.1093/bioinformatics/btr655.
7. Santos AR, Barbosa E, Fiaux K, Zurita-Turk M, Chaitankar V, Kamapantula B, et al. PANNOTATOR: an automated tool for annotation of pan-genomes. *Genet Mol Res*. 2013;12(3):2982-9. doi: 10.4238/2013.August.16.2.
8. Zhao Y, Jia X, Yang J, Ling Y, Zhang Z, Yu J, et al. PanGP: a tool for quickly analyzing bacterial pan-genome profile. *Bioinformatics*. 2014;30(9):1297-9. doi: 10.1093/bioinformatics/btu017.
9. Page AJ, Cummins CA, Hunt M, Wong VK, Reuter S, Holden MT, et al. Roary: rapid large-scale prokaryote pan genome analysis. *Bioinformatics*. 2015;31(22):3691-3. doi: 10.1093/bioinformatics/btv421.
10. Chaudhari NM, Gupta VK, Dutta C. BPGA- an ultra-fast pan-genome analysis pipeline. *Sci Rep*. 2016;6. doi:10.1038/srep24373.
11. Laing C, Buchanan C, Taboada EN, Zhang YX, Kropinski A, Villegas A, et al. Pan-genome sequence analysis using Panseq: an online tool for the rapid analysis of core and accessory genomic regions. *BMC Bioinformatics*. 2010;11:461. doi: 10.1186/1471-2105-11-461.
12. Brittnacher MJ, Fong C, Hayden HS, Jacobs MA, Radey M, Rohmer L. PGAT: a multistrain analysis resource for microbial genomes. *Bioinformatics*. 2011;27(17):2429-30. doi: 10.1093/bioinformatics/btr418.
13. Pantoja Y, Pinheiro K, Veras A, Araújo F, Lopes de Sousa A, Guimarães LC, et al. PanWeb: A web interface for pan-genomic analysis. *PLoS One*. 2017;12(5):e0178154. doi: 10.1371/journal.pone.0178154.
14. Xiao J, Zhang Z, Wu J, Yu J. A brief review of software tools for pangenomics. *Genomics Proteomics Bioinformatics*. 2015;13(1):73-6. doi: 10.1016/j.gpb.2015.01.007.
15. Kanehisa M, Goto S, Furumichi M, Tanabe M, Hirakawa M. KEGG for representation and analysis of molecular networks involving diseases and drugs. *Nucleic Acids Res*. 2010;38(Database issue):D355-60. doi: 10.1093/nar/gkp896.
16. Snipen L, Liland KH. micropan: an R-package for microbial pan-genomics. *BMC Bioinformatics*. 2015;16:79. doi: 10.1186/s12859-015-0517-0.
17. Tettelin H, Riley D, Cattuto C, Medini D. Comparative genomics: the bacterial pan-genome. *Curr Opin Microbiol* 2008; 12:472-77. doi.org/10.1016/j.mib.2008.09.006.
18. Kislyuk AO, Haegeman B, Bergman NH, Weitz JS. Genomic fluidity: an integrative view of gene diversity within microbial populations. *BMC Genomics*. 2011;12:32. doi: 10.1186/1471-2164-12-32.
19. Snel B, Bork P, Huynen MA. Genome phylogeny based on gene content. *Nat Genet* 1999;21:108-10.
20. Felsenstein J. PHYLIP - phylogeny inference package (Version 3.2). *Cladistics*. 1989;5:164-166.
21. Smits SA, Ouverney CC. jsPhyloSVG: A Javascript Library for Visualizing Interactive and Vector-Based Phylogenetic Trees on the Web. *PLoS One* 2010;5(8). doi: 10.1371/journal.pone.0012267.
22. Konstantinidis KT, Tiedje JM. Towards a genome-based taxonomy for prokaryotes. *J Bacteriol* 2005;187(18):6258-64. doi: 10.1128/JB.187.18.6258-6264.2005.
23. Altschul SF, Madden TL, Schaffer AA, Zhang J, Zhang Z, Miller W, et al. Gapped BLAST and PSI-BLAST: a new generation of protein database search programs. *Nucleic Acids Res*. 1997;25:3389-3402.
24. Nakaya A, Katayama T, Itoh M, Hiranuka K, Kawashima S, Moriya Y, et al. KEGG OC: a large-scale automatic construction of taxonomy-based ortholog clusters. *Nucleic Acids Res*. 2013;41(Database issue):D353-7. doi: 10.1093/nar/gks1239.
25. Mbengue M, Lo FT, Diallo AA, Ndiaye YS, Diouf M and Ndiaye M. Pan-genome analysis of Senegalese and Gambian strains of *Bacillus anthracis*. *African Journal of Biotech*. 2016;15(45):2538-2546.
26. Snipen L, Almøy T, Ussery DW. Microbial comparative pan-genomics using binomial mixture models. *BMC Genomics*. 2009;10:385.
27. Lefébure T, Bitar PD, Suzuki H, Stanhope MJ. Evolutionary dynamics of complete *Campylobacter* pan-genomes and the bacterial species concept. *Genome Biol Evol*. 2010;2:646-55. doi: 10.1093/gbe/evq048.
28. Fang Y, Li Z, Liu J, Shu C, Wang X, Zhang X, et al. A pangenomic study of *Bacillus thuringiensis*. *J Genet Genomics*. 2011;38(12):567-76. doi: 10.1016/j.jgg.2011.11.001.
29. Tomida S, Nguyen L, Chiu BH, Liu J, Sodergren E, Weinstock GM, et al. Pan-genome and comparative genome analyses of *propionibacterium acnes* reveal its genomic diversity in the healthy and diseased human skin microbiome. *MBio*. 2013;4(3):e00003-13. doi: 10.1128/mBio.00003-13.
30. Biller SJ, Berube PM, Lindell D, Chisholm SW. *Prochlorococcus*: the structure and function of collective diversity. *Nat Rev Microbiol*. 2015;13(1):13-27. doi: 10.1038/nrmicro3378.
31. Tettelin H, Masignani V, Cieslewicz MJ, Donati C, Medini D, Ward NL, et

- al. Genome analysis of multiple pathogenic isolates of *Streptococcus agalactiae*: implications for the microbial "pan-genome". *Proc Natl Acad Sci U S A*. 2005;102(39):13950-5.
32. Mira A, Martín-Cuadrado AB, D'Auria G, Rodríguez-Valera F. The bacterial pan-genome: a new paradigm in microbiology. *Int Microbiol*. 2010;13(2):45-57.
33. Yang X, Li Y, Zang J, Li Y, Bie P, Lu Y, Wu Q. Analysis of pan-genome to identify the core genes and essential genes of *Brucella* spp. *Mol Genet Genomics*. 2016;291(2):905-12. doi: 10.1007/s00438-015-1154-z.
34. Gomez-Valero L, Silva FJ, Christophe Simon J, Latorre A. Genome reduction of the aphid endosymbiont *Buchnera aphidicola* in a recent evolutionary time scale. *Gene*. 2007;389(1):87-95.
35. Helgason E, Okstad OA, Caugant DA, Johansen HA, Fouet A, Mock M, et al. *Bacillus anthracis*, *Bacillus cereus*, and *Bacillus thuringiensis*-one species on the basis of genetic evidence. *Appl Environ Microbiol*. 2000;66:2627-30.
36. Okinaka RT, Keim P. The Phylogeny of *Bacillus cereus* sensu lato. *Microbiol Spectr*. 2016;4(1). doi: 10.1128/microbiolspec.

**Corresponding author:** François Enault, UMR CNRS 6023 Microorganisms: Genome and Environment, Build. A, 24 avenue des Landais, 63177 Aubière Cedex. La France, Tel: 33-(0)473-407-471; Fax: 33-(0)473-407-670; E-mail: [francois.enault@uca.fr](mailto:francois.enault@uca.fr).

**Received Date:** October 24, 2017, **Accepted Date:** November 23, 2017, **Published Date:** November 30, 2017.

**Copyright:** © 2017 Loiseau C, et al. This is an open access article distributed under the Creative Commons Attribution License, which permits unrestricted use, distribution, and reproduction in any medium, provided the original work is properly cited.

**Citation:** Loiseau C, Hatte V, Andrieu C, Barlet L, Cologne A, et al. (2017) PanGeneHome : A Web Interface to Analyze Microbial Pangenomes. *J Bioinf Com Sys Bio* 1(2): 108.