



HAL
open science

Domestic activities and pottery use in the Iron Age Corsican settlement of Cuciurpula revealed by organic residue analysis

Léa Drieu, Kewin Peche-Quilichini, Thibault Lachenal, Martine Regert

► To cite this version:

Léa Drieu, Kewin Peche-Quilichini, Thibault Lachenal, Martine Regert. Domestic activities and pottery use in the Iron Age Corsican settlement of Cuciurpula revealed by organic residue analysis. *Journal of Archaeological Science: Reports*, 2018, 19, pp.213-223. 10.1016/j.jasrep.2018.02.032 . hal-01783792

HAL Id: hal-01783792

<https://hal.science/hal-01783792>

Submitted on 3 Jan 2022

HAL is a multi-disciplinary open access archive for the deposit and dissemination of scientific research documents, whether they are published or not. The documents may come from teaching and research institutions in France or abroad, or from public or private research centers.

L'archive ouverte pluridisciplinaire **HAL**, est destinée au dépôt et à la diffusion de documents scientifiques de niveau recherche, publiés ou non, émanant des établissements d'enseignement et de recherche français ou étrangers, des laboratoires publics ou privés.

Domestic activities and pottery use in the Iron Age Corsican settlement of Cuciurpula revealed by organic residue analysis

L. Drieu^{a,*1}, K. Peche-Quilichini^{b,c}, T. Lachenal^c, M. Regert^a

^a Université Côte d'Azur, CNRS, CEPAM, France

^b Inrap Méditerranée, France

^c ASM, UMR5140, Univ Montpellier 3, CNRS, MCC, France

* Corresponding author. E-mail address: lea.drieu@york.ac.uk (L. Drieu)

¹ Present address: BioArCh, Department of Archaeology, University of York, Wentworth Way, Heslington, York, YO10 5NG, United Kingdom.

Abstract

The excavation of the protohistoric site of Cuciurpula (South Corsica, France) revealed a significant amount of potsherds, often bearing visible surface crusts, sometimes very thick. This exceptional case in the Mediterranean region, suggesting a good preservation of organic substances, provided a unique opportunity to address questions related to pottery function and natural organic substances exploited in Corsica during the first half of the 1st millennium BC. The molecular analysis (GC and GC/MS) of organic residues from three houses of the site, preserved in both pottery walls and charred surface crusts, highlighted the wide diversity and the various roles of substances contained and processed in ceramic vessels: animal fats, plant oils and waxes, beeswax, and conifer resin. These molecular data, considered together with the shapes of the vessels and their location into the habitation units, revealed the diversity of pottery function (culinary and technical) and spatial organisation of domestic activities between houses or in a house (distinction between storage and cooking areas).

Keywords

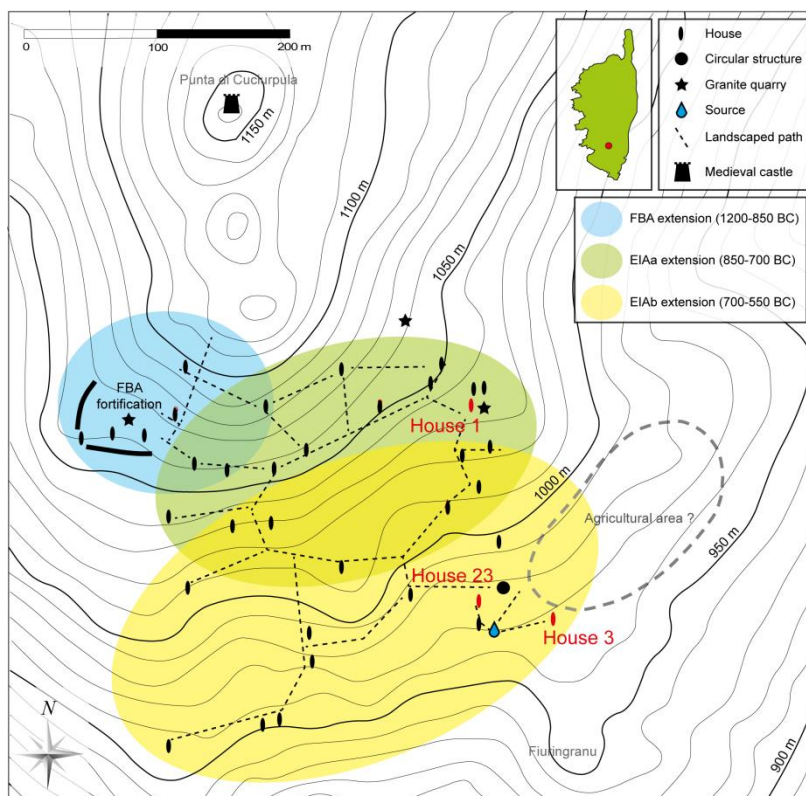
Organic residue analysis; pottery function; Iron Age; Corsica; spatial distribution; adhesive making

1. Introduction

For more than thirty years, organic residue analysis mainly focused on the study of the first pottery and the spread of Neolithic economy (e.g. Craig et al., 2011; Debono Spiteri et al., 2016; Evershed et al., 2008; Salque et al., 2013). Unlike the Neolithic period, largely studied in Europe and the Near East, Protohistoric sites attracted much less attention. For this period, organic residue analysis has been mainly performed on ceramic or wooden containers from sites located in the Alps (Carrer et al., 2016; Colonese et al., 2017; Evershed et al., 1995; Hayek et al., 1991; Raven et al., 1997), the British Islands (Copley et al., 2005a, 2005b; Craig et al., 2005; Cramp et al., 2014b, 2015; Dudd, 1999; Hayek et al., 1991), and Scandinavia (Cramp et al., 2014a; Hayek et al., 1991; Isaksson et al., 2010; McGovern et al., 2013). Only few data from other regions are available: Russia (Kostyukevich et al., 2016), Poland (Heron et al., 2016), France (for hafting residues analysis; Regert et al., 2003; Regert and Rolando, 2002) and Eastern Mediterranean (Decavallas, 2011; Roumpou et al., 2003; Steele and Stern, 2017). In particular, organic residue analysis data on protohistoric pottery content from north-western Mediterranean are very scarce (Faraco et al., 2016; Manzano et al., 2015), due to the lack of

44 studies in this region or to the generally poor preservation of organic substances in Mediterranean
45 contexts.

46 The protohistoric site of Cuciurpula is settled on the hillside of la Punta di Cuciurpula in south central
47 Corsica (Figure 1). The excavations carried out between 2010 and 2015 revealed a large settlement of
48 about 40 well-preserved structures occupied from the 12th to the 6th century BC (Late Bronze Age to
49 the beginning of the Second Iron Age; Peche-Quilichini et al., 2015). Based on exhaustive excavation
50 data of seven of the structures and further analysis of various artefacts, these structures have been
51 interpreted as habitation units. The presence of grinding stones together with scarce cereals and
52 domestic animal remains attests for agriculture and herding activities (Peche-Quilichini et al., 2014a).
53 The surrounding forest was also exploited as acorn and pine nuts were discovered at the site (Peche-
54 Quilichini et al., 2014a). This very limited picture of the exploitation of biological substances by
55 protohistoric societies at Cuciurpula has been partially completed thanks to organic residue analysis
56 focusing on adhesive and waterproofing substances (Rageot et al., 2016). In a complementary
57 approach, the present paper enlarges the scope of natural substances by studying the various fatty
58 substances contained and processed in ceramic vessels, in order to explore the whole diversity of
59 products exploited during Protohistory in Corsica. Secondly, by relating the content of pottery with
60 the shapes of the vessels and their location inside the habitation units, we aim at understanding how
61 these products were transformed, stored and consumed at the site. This will highlight the largely
62 unknown daily domestic activities of Corsican communities during the beginning of the 1st
63 millennium BC. With these aims, ceramic vessels from three different Iron Age houses of Cuciurpula
64 were selected. The lipids preserved in their walls were extracted and studied by gas chromatography
65 and mass spectrometry (GC and GC/MS).



66

67 *Figure 1: Location and map of the site. In red are the three habitation units considered in the present study.*

68 2. Materials and methods

69 2.1. Samples

70 For organic residues analysis, three different types of sample can be considered: free lumps
 71 recovered in sediment, organic molecules trapped inside the pottery walls, and visible surface
 72 residues (Regert, 2007, 2011). Among the latter, different categories could also be distinguished,
 73 based on their location on the vessel, their adherence to ceramic surface, and their aspect (colour,
 74 brightness, transparency, etc.). As described by Rageot *et al.* (2016), five classes of residues have
 75 been identified based on simple observation at Cuciurpula: reparation residue along the edges of
 76 ancient cracks (class A); thin residues on the inner surface interpreted as ceramic internal treatment,
 77 maybe for waterproofing (class B); black residues on the external surface, maybe for decoration or
 78 treatment of the exterior of the vessels (class C); free lumps, possibly adhesive storage before use or
 79 manufacturing waste (class D); and thick visible remains on the interior surface, probably residues
 80 related to the ceramic content (class E). The present study focuses on class E residues and on an
 81 additional class, comprising organic molecules preserved in the porous ceramic matrix but invisible to
 82 the naked eyes (class F) in order to investigate pottery use.

83 Three habitation units were selected for sampling. House 1 (850-600 BC) was chosen to complete the
 84 data obtained during the adhesive substances study (Rageot et al., 2016). Two supplementary
 85 habitation units, House 3 and House 23 (700-550 BC), were selected to compare two
 86 contemporaneous houses located close to each other. Two vessels from an additional house (house
 87 38) were sampled because of their perforated walls suggesting a particular function. Due to the high
 88 fragmentation of ceramics, only part of the sampled potsherds originated from ceramic vessels of
 89 known shapes (deep vases, small pots, goblets, bowls and perforated shallow containers). A total of
 90 39 potsherds and 20 visible residues was analysed (Table 1).

Sample name	Archaeo. number	House	US	Square	Morphology	Analysed residue
MR2696a and r	4891	1	135	K14	Unknown	Class F, E
MR2698a and r	4719	1	135	J14	Unknown	Class F, E
MR2699a and r	4506	1	135	J14	Unknown	Class F, E
MR2701a and r	5211	1	114	K9-10-11	Unknown	Class F, E
MR2702a and r	5178	1	114	J13	Unknown	Class F, E
MR2705a and r	5172	1	114	L13	Unknown	Class F, E
MR2706a and r	5243	1	114	DE13	Unknown	Class F, E
MR2707a and r	5211	1	114	K9-10-11	Unknown	Class F, E
MR2711a and r	5211	1	114	K9-10-11	Unknown	Class F, E
MR2709a and r	2794	1	114	C9	Unknown	Class F, E
MR2713a and r	2762	1	103	K12	Unknown	Class F, E
MR2714a and r	3053	1	103	H14	Unknown	Class F, E
MR2717a and r	2763	1	103	K13	Unknown	Class F, E
MR2727a and r	5235	1	122	AB456	Deep vase, large opening	Class F, E
LD10650a and r	964	1	105	E5	Big vase with thick walls	Class F, E
LD10651a and r	755	1	105	E5	Big vase with thick walls	Class F, E
LD10652a		38	5		Perforated shallow containers	Class F
LD10653a	5211	1	114	K9-10-11	Perforated shallow containers	Class F
LD10654a	2243	1	115	C10	Perforated shallow containers	Class F
LD10655a		38	1		Perforated shallow containers	Class F
LD10656a	1845	1	101	A12	Unknown	Class F
LD10659a and r	910	1	105	E3	Big vase with thick walls	Class F, E
LD10660a	110	23	13	E6	Deep vase, slightly restricted opening	Class F
LD10661a and r	121	23	16	E7	Unknown	Class F, E

LD10662a and r	155	23	16	E6	Unknown	Class F, E
LD10663a	255	23	16	E4	Deep and close vase with straight neck	Class F
LD10664a	204	23	16	E7	Bowl	Class F
LD10665a	96	23	13	E7	Deep and close vase	Class F
LD10666a	37	23	16	E4	Deep and close vase	Class F
LD10667	93	23	13	F5	Deep and close vase	Class F
LD10668a	459	3	405		Carinated bowl	Class F
LD10669a	528	3		Fosse 410	Carinated bowl	Class F
LD10670a	742	3	405	F8	Convex cup	Class F
LD10671a	600	3	402b	E7	Convex pot	Class F
LD10672a and r	266	3	402b		Convex neck pot	Class F, E
LD10673r	608	3	405	F8	S-profile pot	Class F
LD10674a		3	405		S-profile pot	Class F
LD10675a	349	3			Deep vase, restricted opening, thin bottom	Class F
LD10676a	648	3	425	D8	Deep vase, restricted opening	Class F

91 *Table 1: List of samples analysed during the study and excavation data. r and E: visible residue related to the content of the*
92 *vessel; a and F: organic residue potentially absorbed inside the pottery matrix.*

93 Surrounding sediments were also sampled at two different locations at the site to compare their lipid
94 composition with pottery sherds and surface visible residues. In order to study the effect of the
95 environmental context on lipid preservation, the acidity of these soil samples was also measured.

96 2.2. Lipid analysis

97 Sample treatment and analysis were carried out following Evershed et al. (1990), with some small
98 modifications. Visible surface residues were removed from sherds with a sterile scalpel. The surfaces
99 of the potsherds were then scraped using a clean scalpel to remove any exogenous lipids. Around 2 g
100 of potsherds and between 40 and 400 mg of visible carbonised residues were crushed using solvent-
101 washed mortar and pestle. An internal standard (20 µg of *n*-C₃₄, 1 mg.mL⁻¹ in *n*-hexane) was added
102 for quantitation. Solvent extraction was performed using dichloromethane/methanol solution
103 (DCM/MeOH; 2:1 v/v, 10 mL) and sonication. After centrifugation, the supernatant was evaporated
104 to dryness and dissolved in 500 µL of DCM/MeOH to obtain the total lipid extract (TLE). An aliquot of
105 the TLE (100 µL) was treated with *N,O*-bis(trimethylsilyl)trifluoroacetamide containing 1%
106 trimethylchlorosilane (BSTFA; 70°C, 1h). The excess BSTFA was evaporated under nitrogen and the
107 derivatised aliquot dissolved in hexane for molecular analyses.

108 Gas chromatographic (GC) analyses were performed on an Agilent Technologies 7890A device. 1 µL
109 of sample was introduced via an on-column injector into a 15 m x 0.32 mm i.d. fused silica capillary
110 (DB5-MS, 0.1 µL film thickness, Agilent J&W), with helium used as carrier gas. The GC temperature
111 programme was as follows: increased from 50°C to 100°C at 15°C min⁻¹, then from 100°C to 375°C at
112 10°C min⁻¹. For GC/MS analysis, the instrument was a Shimadzu GC 2010 PLUS chromatograph
113 coupled to a Shimadzu QP 2010 ULTRA mass spectrometer, fitted with a high temperature non-polar
114 column (DB5-HT, 15 m x 0.322 mm i.d., 0.1 µm film thickness, Agilent J&W). The injection was
115 performed using a splitless injector. The temperature programme consisted of a 1 min isothermal
116 hold at 50°C followed by an increase to 100°C at 15°C.min⁻¹, then to 240°C at 10°C.min⁻¹ and to
117 380°C.min⁻¹ and a final isothermal hold for 7 min. The GC-MS interface was maintained at a
118 temperature of 300°C and the mass spectrometer run in electron ionization mode (EI, 70 eV). Mass
119 spectra were acquired over the range *m/z* 50–950.

120 2.3. Complementary data on sediments

121 For pH measurements of the soils, 2 g of sample were sieved to 2 mm and dissolved in 25 mL distilled
122 water. The hand-held pH meter (Eutech PC 450, Thermo Scientific) was calibrated using 3 different
123 buffer solutions (pH 4.00, 7.00 and 9.81), and all pH measurements were made while stirring with the
124 aid of a magnetic stirrer. Determination of carbonate content was performed using a Bernard
125 Calcimeter calibrated with a known amount of pure CaCO₃. The amount of carbonate content was
126 determined by quantifying the CO₂ released when the soil samples reacted with HCl (6M, 10 mL).

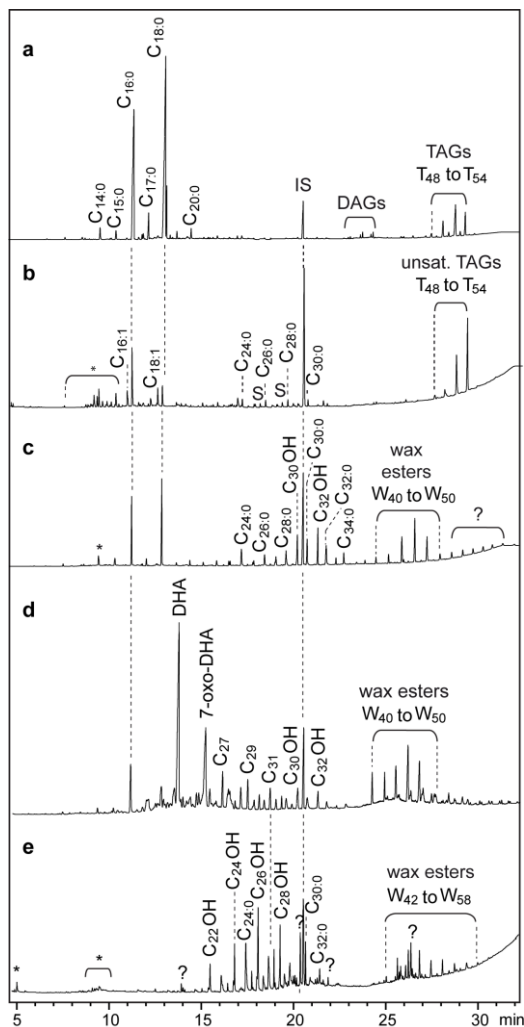
127

128 3. Results and molecular interpretation

129 3.1. Extraction yields from ceramics

130 Lipid recovery from both pottery sherds and carbonised surface residues was surprisingly very high
131 (66% of analysed potsherds contained more than 5 µg.g⁻¹, with a maximum of 3855 µg.g⁻¹) compared
132 to other Mediterranean sites (Debono Spiteri et al., 2016; Evershed et al., 2008; Fanti et al.,
133 submitted; Fanti, 2015; Šoberl et al., 2014). The exceptional preservation of organic substances at
134 the site is also attested by the presence in some TLE of unsaturated triacylglycerols (TAGs), highly
135 sensitive to both microbial and chemical degradation processes. To the best of our knowledge,
136 Cuciurpula is one of the few archaeological contexts where they were preserved in pottery
137 (Decavallas, 2011, pp. 176–177; Evershed et al., 2003; Fanti et al., submitted). More common
138 molecules, such as saturated TAGs and their degradation products (di- and monoacylglycerols, and
139 fatty acids), wax esters, *n*-alkanes, *n*-alcohols, and diterpenoid compounds have been preserved,
140 highlighting the wide diversity of substances contained and processed in pottery vessels at
141 Cuciurpula (Figure 2).

142

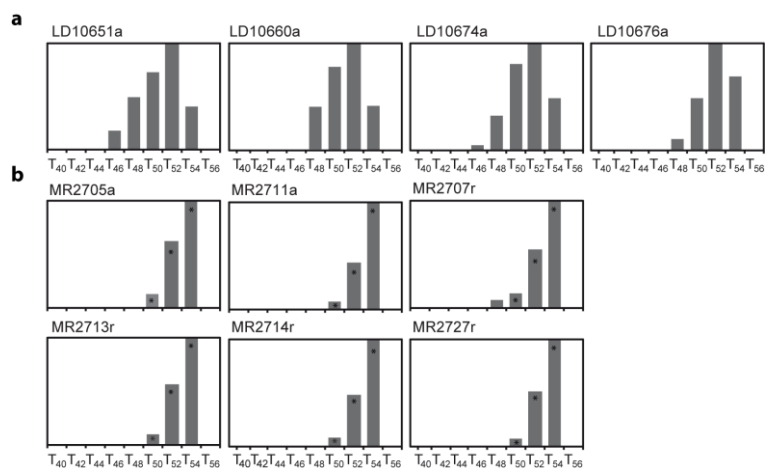


143

144 Figure 2: Gas chromatograms of lipids from ceramic vessels (a to d) and of sediment (e). a) animal fat (LD10676a); b) plant
 145 oil (MR2707r); c) plant wax (LD10669a); d) beeswax and conifer resin (LD10662a). C_{xx:x}: fatty acids; DHA: dehydroabietic
 146 acid; C_{xx}OH: linear alcohols; C_{xx}: linear alkanes; S: saccharides; DAGs: diacylglycerols; W_{xx}: wax esters; TAGs: triacylglycerols;
 147 ?: unknown compound; IS: internal standard; *: modern contamination.

148 3.2. Fatty substances

149 TAGs were detected in 6 pottery sherds and 4 carbonised residues (LD10651a, LD10660a, LD10674a,
 150 LD10676a, MR2705a, MR2707r, MR2711a, MR2713r MR2714r, and MR2727r; Figure 3). The diversity
 151 of their profiles and the occasional presence of high quantity of unsaturated compounds suggest that
 152 both animal fats and plant oils were processed in pottery vessels.
 153



154
155

Figure 3: TAG profiles: a) mostly saturated; b) mostly unsaturated. *: unsaturated TAGs.

156 When only saturated TAGs were detected (Figure 3a), their restricted profile (T_{46} to T_{48} - T_{54})
 157 dominated by T_{52} suggested the presence of ruminant adipose fats (LD10651a, LD10660a, LD10674a
 158 and LD10676a; Dudd et al., 1999; Dudd and Evershed, 1998). In these samples, the ratio of palmitic
 159 to stearic acid was always dominated by the latter (P/S comprised between 0.52 and 0.71),
 160 supporting the animal origin of the organic substances. Absent from samples with TAG typical of
 161 plant oils, linear and branched $C_{15:0}$ and $C_{17:0}$ fatty acids were identified in some samples with
 162 saturated TAGs. Their presence strengthens the hypothesis of ruminant fat, as they can result from
 163 the activity of bacteria in the rumen (Dudd et al., 1999; Evershed, 1993). Based on molecular analysis,
 164 dairy products do not seem absorbed in the studied pottery but further isotopic analysis will be
 165 carried out to assess this point (Dudd and Evershed, 1998).

166 Unsaturated TAG profiles were clearly identified in 6 samples based on their retention time and their
 167 specific mass spectrum, different from their saturated counterpart (MR2705a, MR2707r, MR2711a,
 168 MR2713r, MR2714r, and MR2727r; Figure 3b). This particular profile is close to plant oils with the
 169 dominating T_{54} (triolein) and the T_{52} and T_{50} peaks comprising oleic and palmitic acid moieties (Copley
 170 et al., 2005c; Garnier et al., 2009). Besides $C_{16:0}$ and $C_{18:0}$, most of these samples also contained
 171 substantial amounts of unsaturated $C_{16:1}$ and $C_{18:1}$, and odd and even-carbon numbered long-chain
 172 fatty acids ($C_{20:0}$ to $C_{34:0}$), confirming a plant origin. A small amount of saccharides was also
 173 sometimes detected, thanks to ions m/z 204, 217 and 361 in mass spectra (Medeiros and Simoneit,
 174 2007).

175 The absence of other molecular markers except palmitic and stearic acids in thirteen more TLEs, did
 176 not allow identification of the source of the fatty substances present in samples LD10656a,
 177 LD10659a, LD10664a, LD10665a, LD10667a, LD10673a, LD10670a, LD10675, MR2696a, MR2699r,
 178 MR2702r, MR2706a and MR2727a.

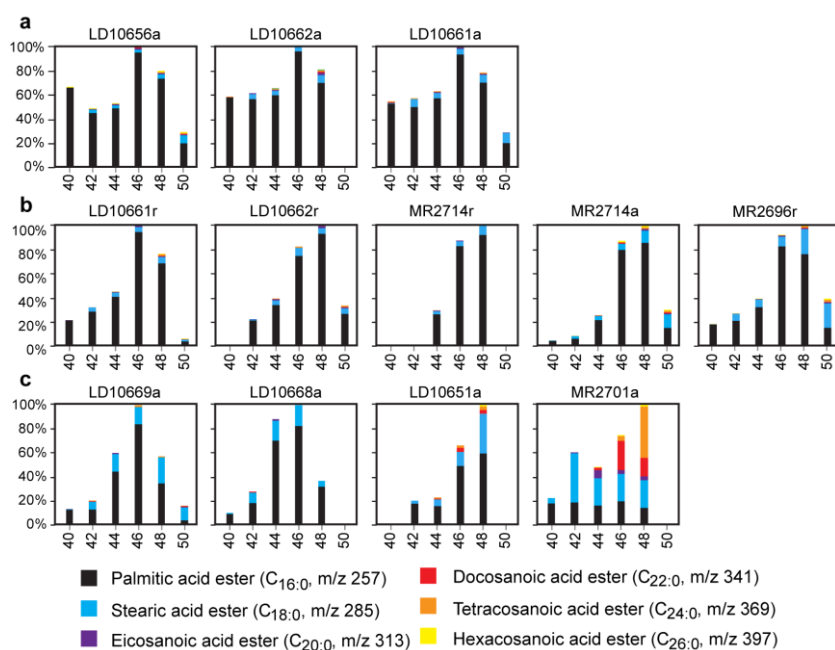
179 Methylated fatty acids have been detected in three samples (LD10651a, LD10656a, and LD10659a).
 180 These compounds are known to be formed when fatty substances are exposed to very high
 181 temperatures (Raven et al., 1997), but they can also result from low heating of animal fat or plant oil
 182 in ceramics at less than 100°C , probably when catalysed by metal salts in the pottery fabric, as
 183 revealed by recent experiments (Drieu et al., unpublished results). Methyl esters may also
 184 correspond to artefacts resulting from the reaction, possibly catalysed by clays, of glycerol esters or
 185 linear carboxylic acids with methanol during extraction of the samples. At this stage of the
 186 investigation the origin of these methylated esters is still no fully understood.

187 3.3. Waxes

188 Typical molecular signals of waxy substances were identified in several samples: wax esters and their
 189 degradation products (even-carbon numbered long-chain fatty acids and n -alcohols) and ranges of

190 long-chain odd-carbon numbered *n*-alkanes. The diversity of profiles of the homologous series of
191 these molecular compounds suggests various origins.

192 First, three samples displayed classical profiles of well-preserved beeswax (LD10656a, LD10661a and
193 LD10662a) with palmitic wax esters in the range W₄₀–W₅₀ dominated by W₄₆, and the corresponding
194 hydroxyesters (Figures 2d and 4a; Heron et al., 1994; Regert et al., 2001; Roffet-Salque et al., 2015;
195 Tulloch, 1971). Typical beeswax distributions of *n*-alkanes (C₂₇ to C₃₁, maximizing at C₂₇) and long-
196 chain fatty acids (C_{24:0} to C_{32:0}) were also detected. Partial hydrolysis of wax esters is attested by the
197 presence of *n*-alcohols from C_{24OH} to C_{32OH} (Charters et al., 1995; Evershed et al., 1997). Degraded
198 beeswax was detected in 5 more samples (LD10661r, LD10662r, MR2696r, MR2714a and r) by the
199 characterisation of slightly different profiles, altered by heating or natural processes: reduction of
200 shorter wax esters (W₄₀ to W₄₄) and changes in the *n*-alkanes profiles (Figure 4b; Heron et al., 1994;
201 Regert et al., 2001).



202
203 *Figure 4: Wax esters composition in samples containing waxy substances. a) well-preserved beeswax profile; b) degraded*
204 *beeswax profile; c) probably plant wax profile.*

205 Waxy profiles were also attested in 4 other samples (LD10651a, LD10668a, LD10669a, and MR2701a)
206 but with unusual distributions, suggesting a different natural origin. Mass spectrometric
207 investigations of these samples revealed that palmitic wax esters were coeluted with several isomers
208 (C_{18:0} to C_{26:0} wax esters; Figure 4c). Other components present included *n*-alkanes profiles,
209 dominated by C₂₉ or C₃₁ and various long-chain fatty acids (Figure 2c). These molecular markers
210 probably originate from plant epicuticular waxes (Ribechini et al., 2008) absorbed in pottery wall
211 during the cooking of leafy vegetables, for example. A mixing of epicuticular plant wax and beeswax
212 is not to be excluded for some samples (Ribechini et al., 2008).

213 *N*-alkanes and *n*-alcohols also occurred in samples with wax esters existing as traces (LD10676a,
214 LD10672a, and MR2727r), making the origin of the waxy substance difficult to determine.

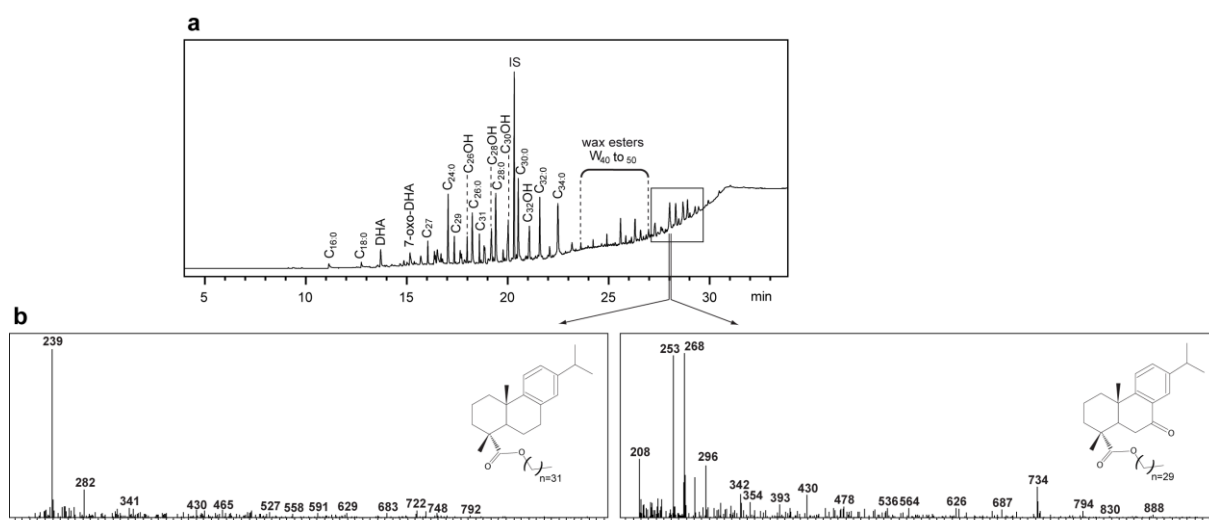
215 3.4. Diterpenoid compounds

216 Seven TLE from sherds and their associated visible crusts yielded substantial quantities of diterpenoid
217 constituents (LD10661a and r, LD10662a and r, LD10671a, LD10672a and r), mainly by-products of
218 the degradation of abietic acid: dehydroabietic acid (DHA), didehydroabietic acid, 7-oxo-
219 dehydroabietic (7-oxo-DHA) and 15-hydroxy-7-oxo-dehydroabietic acid (15-hydroxy-7-oxo-DHA).
220 Together with the presence of pimaric and isopimaric acids and unknown DHA derivatives (with mass

221 spectra dominated by the m/z 239 ion), these markers attested the presence of conifer resin
222 (Colombini et al., 2005; Regert and Rolando, 2002).

223 The presence of these biomarkers in carbonised surface residues related to the content of the vessels
224 (i.e. with appearance, localisation on the vessel and adherence to the wall not suggesting pottery
225 coating of repair) and the identification of retene in some samples indicate that conifer resin was
226 heated in ceramic vessels. Furthermore, conifer resin was identified together with beeswax
227 biomarkers in four samples (LD10661a and r, LD10662a and r), while beeswax is absent, or present as
228 traces in others (LD10671a, LD10672a and r). In four samples (LD10661a, LD10662a and r,
229 LD10672a), two homologous series of unusual molecular compounds eluted after wax esters
230 (between 27 and 30 min; Figure 5a). Their mass spectra, respectively dominated by ions m/z 239, and
231 both 253 and 268, suggested that they were esters of DHA or 7-oxo-DHA and long-chain linear
232 alcohols (Figure 5b). The length of these n -alcohols could have been partly unravelled since the
233 molecular peaks of part of these spectra fitted with esters of 7-oxo-DHA and C_{26OH} to C_{30OH} n -alcohols.
234 Esters of terpenic alcohols and fatty acids have already been determined in archaeological samples
235 (Charrié-Duhaut et al., 2007; Dudd and Evershed, 1999), but to the best of our knowledge, this is the
236 first identification of esters of diterpenic acids and linear alcohols. Their formation should result from
237 an esterification reaction between diterpenoid compounds and free n -alcohols (also present as free
238 alcohols in the sample and probably resulting from the hydrolysis of wax esters), maybe during the
239 heating of beeswax and conifer resin.

240



241
242 Figure 5: Example of TLE containing unusual molecular compounds eluted after the wax esters (sample LD10662a). a) partial
243 gas chromatogram; b) mass spectra of the peaks eluted at 28 min and proposed molecular structures.

244 3.5. Sediments analysis

245 The sediments of Cuciurpula are clearly acidic, with pH values comprised between 4.9 and 5.0. The
246 acidic properties of the sediments are likely to be due to the granitic substrate of Corsica allowing the
247 development of soils rich in SiO₂ and depleted in Ca²⁺ ions and thus favourable to acidification
248 (Fabian et al., 2014). This hypothesis is supported by the very low total carbonate content we
249 measured in the sediment samples (1%).

250 The sediments yielded respectively 51.2 and 4.6 μg.g⁻¹ of lipids, with a clear predominance of n -
251 alcohols (C_{22OH} to C_{30OH}, with a maximum at C_{26OH}), a typical pattern of plant waxes (Figure 2e;
252 Eglinton and Hamilton, 1967; Gülz, 1994; Kolattukudy, 1970). Sample LD10678 also revealed wax
253 esters (W₄₂ to W₅₈, maximum W₄₆ and W₄₈), long chain fatty acids from C_{22:0} to C_{30:0} and odd-
254 numbered n -alkanes (C₂₇-C₃₃, with maximum at C₃₁), confirming the plant origin of the lipids
255 contained in the soils (Eglinton and Hamilton, 1967; Evershed et al., 1994; Evershed and Lockheart,
256 2007; Gülz, 1994; Kolattukudy, 1970; Tulloch and Hoffman, 1973). Although long chain fatty acids, n -
257 alkanes and n -alcohols were also detected in some potsherds, their respective distributions in soils
258 and in pottery are clearly different (for example, C_{26OH} is never dominant n -alcohols in potsherds).

259

260 4. Discussion

261 4.1. Preservation of the lipid signal

262 The Mediterranean climate being unfavourable to lipid preservation (Evershed, 2008a), the good
263 preservation of lipids at Cuciurpula is surprising. The molecular composition of the TLE from pottery
264 sherds and visible residues are very different from the lipids extracted from the sediments,
265 confirming that the detected lipids are due to pottery use and did not migrate from the surrounding
266 soils (Heron et al., 1991). The acidic properties of the sediments could however explain the
267 significant amount of lipids preserved at the site, because they are unfavourable to microorganisms
268 development (DeLaune et al., 1981; Moucawi et al., 1981). Furthermore, in acidic conditions fatty
269 acids are not present as soluble ions and are thus less easily eliminated by leaching (Evershed et al.,
270 1997).

271

272 4.2. Exploitation of natural substances at Cuciurpula during the 1st Iron Age

273 The presence of animal fats in ceramic vessels is quite common in pre- and protohistoric pottery (e.g.
274 Copley et al., 2005a, 2005b; Dudd et al., 1999; Salque et al., 2012). The molecular assemblages and
275 particularly the TAGs profiles suggest that ruminant fats were mainly exploited in ceramic vessels at
276 Cuciurpula, probably cattle and ovicaprids. These results are coherent with the scarce faunal remains
277 discovered and studied at Cuciurpula (Peche-Quilichini et al., 2014a). Based on molecular profiles of
278 TAGs, it was not possible to detect any dairy product but this has now to be confirmed by isotopic
279 analysis (Dudd & Evershed, 1998).

280 More unusual is the large quantity of samples yielding plant substances: pottery seems to have been
281 used equally for animal (11 vessels) and plant products (9 vessels), sometimes mixed together (3
282 vessels). This uncommonly high percentage of pottery used to contain or process diverse plant oils
283 and waxes may be due to the good preservation of organic molecules at the site. Nevertheless, it also
284 gives evidence for significant exploitation of the plant kingdom by protohistoric societies of the first
285 Iron Age in Corsica. Plant substances seem to have been heavily contained and processed in pottery
286 during Protohistory, in particular in the Eastern Mediterranean region (Greece, Cyprus, and
287 Macedonia) and Britannic Islands (Copley et al., 2005a, 2005b; Decavallas, 2011; Evershed et al.,
288 2003; Steele and Stern, 2017). This is confirmed by archaeobotanical studies at Cuciurpula, which
289 highlighted the exploitation of acorn, pine nuts and barley (Peche-Quilichini et al., 2014a). Olive
290 exploitation is not attested at the site but at other Corsican settlements (Bronzini de Caraffa et al.,
291 2005; de Lanfranchi, 2005; Magdeleine and Ottaviani, 1983; Terral et al., 2005). The unsaturated TAG
292 profile extracted from archaeological sherds could originate from olive oil, acorn or pine nut fats
293 (Copley et al., 2005c; Garnier et al., 2009; León-Camacho et al., 2004; Lopes and Bernardo-Gil, 2005;
294 Nergiz and Dönmez, 2004), but saccharides and fatty acid distributions are different from these
295 substances (Al-Rousan et al., 2013; Buonasera, 2007; De Man, 1985; Nergiz and Dönmez, 2004).
296 Analysis of phytoliths or starch grains on potsherds and carbonised surface residues could provide
297 new data to help identifying these plant substances.

298 The presence of beeswax in several pottery walls and visible residues related to the content of the
299 vessels confirm the exploitation of beehive products at Cuciurpula, previously discussed by Rageot et
300 al. (2016). When detected together with animal fats or plant oils, beeswax can be interpreted as a
301 residue of honey mixed with other commodities for meal preparation or as waterproofing agent of
302 the vessel walls before its use to process edible commodities (Regert et al., 2001; Roffet-Salque et al.,
303 2015). The detection of beeswax in pottery from Cuciurpula enters within a global picture of beehive
304 products exploitation during Protohistory. Beeswax is attested in potsherds from an Etruscan
305 contemporaneous site in Italy (Garnier et al., 2002), but also in earlier settlements in Eastern

306 Mediterranean (Decavallas, 2011; Evershed et al., 1997; Roumpou et al., 2003; Steele and Stern,
307 2017). Whether the exploited beehives at Cuciurpula were domestic or wild is difficult to establish,
308 but domestic beehives are not to be excluded since they are attested contemporaneously in the Near
309 East (Bloch et al., 2010) and a few centuries later in Greece (Evershed et al., 2003) and in the Po plain
310 (Castellano et al., 2017).

311 The identification of diterpenoid compounds confirms the exploitation of conifer resin already
312 highlighted by Rageot et al. (2016). No molecular marker of birch bark tar has been detected during
313 the present study. Considering the good stability of such molecular compounds in archaeological
314 contexts, this absence suggests that birch bark tar was not contained or processed in the ceramics,
315 but used to repair and coat the external walls of some vessels (Rageot et al., 2016).

316

317 4.3. Pottery function

318 Based on the shape of the vessels, on the presence/absence of carbonised residues and on the fatty
319 substances identified, four different types of uses have been distinguished.

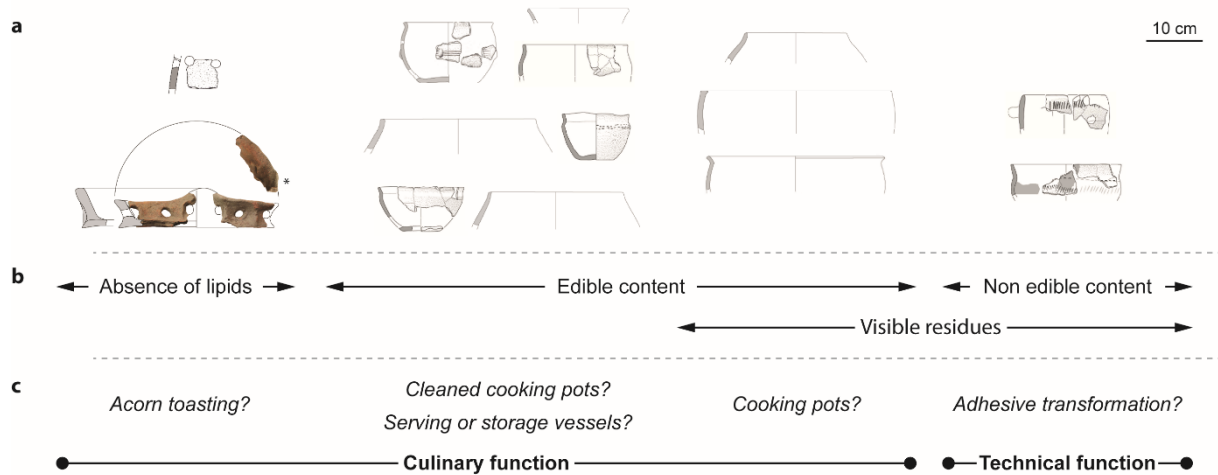
320 Considering the edible substances (animal fats, plant oils and waxes) identified in 25 ceramics, it is
321 clear that they were used, at least once, as culinary utensils (Figure 6). The presence of carbonised
322 residues on the surface of 15 of them indicates that their content was heated. The absence of
323 molecular markers of thermal transformation (such as ketones and ω -(*o*-alkylphenyl)alkanoic acids)
324 could be due to the lack of metallic salts catalysing their formation or to cooking processes at low
325 temperature, like simmering (Evershed, 2008b; Raven et al., 1997). The co-occurrence of various
326 products (animal fats, plant oils and waxes and / or beeswax) in several ceramic vessels from House 1
327 represents either intentional mixing resulting from culinary recipes or successive uses. For this
328 category of vessels, the diversity of molecular signals, especially when comparing the TLE from the
329 pottery walls (accumulation of the successive contents) and the corresponding food crusts (last use;
330 Oudemans and Boon, 1991), suggests that each ceramic vessel was used for various commodities.
331 The shape of these “cooking pots” was rarely possible to reconstruct due to their high fragmentation,
332 but the few known shapes are vases of large diameter. The thick wall of some vases (more than 8.5
333 mm for 1/3 of the pottery displaying food crusts) could seem contradictory with a use as cooking pot
334 (Bronitsky, 1986, p. 250; Rice, 1987, p. 229). However, thick walls could have been intentionally
335 chosen to strengthen the vessels against mechanical shocks potentially occurring when moving the
336 pots or stirring the content (Rice, 1987, p. 228).

337 Ten ceramics with edible substances preserved inside their walls do not display any visible residues
338 on their surface (Figure 6), maybe due to their cleaning or to the absence of contact with fire - as
339 serving or storage vessels.

340 The analysis of the four perforated containers revealed a complete absence of lipids (Figure 6).
341 Considering the excellent general preservation of lipids at the site, this absence seems incompatible
342 with potential use for straining substances such as dairy or beehive products, as already identified in
343 Neolithic sites (Regert et al., 2001; Salque et al., 2013). Considering the shallow shape suggested by a
344 similar perforated sherd at the recently excavated site of Valchiria (Sartène, South Corsica; Peche-
345 Quilichini et al., in press), another hypothesis of use is the toasting of acorns. Such function could be
346 related to grilled acorn stocks revealed by excavation in a house of the site (Peche-Quilichini et al.,
347 2014a). Furthermore, this use should not allow any release and absorption of lipids in the pottery
348 wall nor the formation of foodcrusts and could be thus consistent with the results of our analysis.

349 Finally, the analysis of four vessels highlighted the presence of exclusively non-comestible products
350 (conifer resin, sometimes mixed with beeswax), suggesting a technical use probably related to
351 adhesives (Figure 6). As already discussed by Rageot et al. (2016), the mixing of beeswax and conifer
352 resin can be intentionally made in order to modify the physical properties of the adhesives. The
353 systematic presence of thick carbonised surface residue on the corresponding potsherds, the

354 identification of molecular markers of heating, and the degradation of the beeswax molecular profile
 355 in some carbonised residues related to the content of the vessels indicate that the adhesives were
 356 heated inside the pottery. The absence of methyl-dehydroabietate suggests that conifer resin was
 357 used instead of conifer pitch.
 358

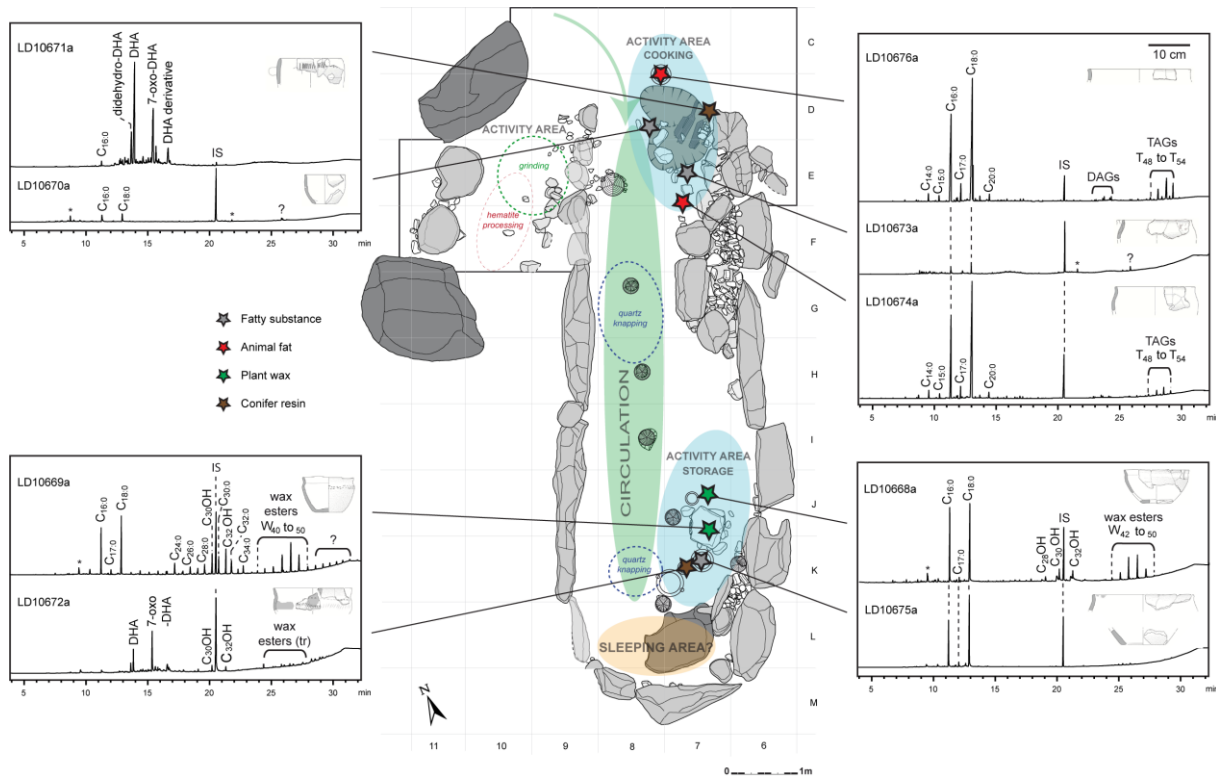


359
 360 *Figure 6: Pottery functional groups: shapes of the vessels (a) classified according to the edibility of lipid content and the*
 361 *presence of visible residues (b), and hypothesis of vessels use (c). * proposed shape based on similar perforated sherd*
 362 *excavated at the site of Valchiria (Sartène, South Corsica; Peche-Quilichini et al., in press). Vessels drawings: K. Peche-*
 363 *Quilichini and T. Lachenal.*

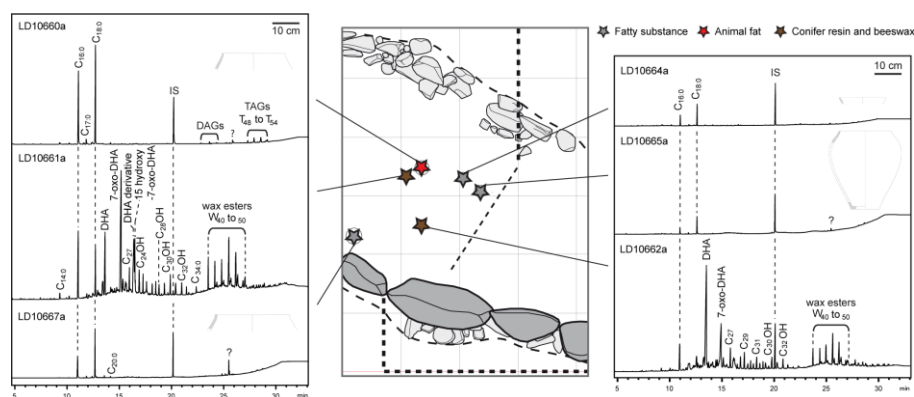
364

365 4.4. Spatial distribution

366 General spatial organisation in the habitation units at Cuciurpula has been unravelled for Houses 3
 367 and 23, based on the distribution of pottery and lithic tools (Peche-Quilichini et al., 2014b, 2015).
 368 Potsherds originate from a unique area in House 23 and two distinct ones in House 3 (probably
 369 respectively cooking and storage areas). The sampling in House 1 was mainly carried out in a waste
 370 area near the actual house.
 371



372
 373 *Figure 7: Spatial distribution of pottery from House 3 and gas chromatograms of associated TLE. Cxx:x: fatty acids; DAGs:*
 374 *diacylglycerols; CxxOH: linear alcohols; Wxx: wax esters; TAGs: triacylglycerols; DHA: dehydroabiatic acid; ?: unidentified*
 375 *compound; IS: internal standard; * : modern contaminant. Computer-aided design of House 3 and vessels drawings: T.*
 376 *Lachenal.*



377
 378 *Figure 8: Spatial distribution of pottery from House 23 and gas chromatograms of associated TLE. Cxx:x: fatty acids; DAGs:*
 379 *diacylglycerols; CxxOH: linear alcohols; Wxx: wax esters; TAGs: triacylglycerols; DHA: dehydroabiatic acid; ?: unidentified*
 380 *compound; IS: internal standard; * : modern contaminant. Computer-aided design of House 23 and vessels drawings: K.*
 381 *Peche-Quilichini.*

382 Organic residue analysis in pottery revealed some differences in pottery use inside each domestic
 383 unit. In Houses 3 and 23, pottery related to both culinary (animal and/or plant fats) and technical
 384 (conifer resin, with or without beeswax) activities do not seem spatially distinct inside the habitation
 385 unit (Figure 7 and Figure 8). “Adhesive recipes” seem however to be specific to each house: conifer
 386 resin was used alone in House 3, but was mixed with beeswax in House 23. In House 1, adhesive-
 387 related activities do not seem to have occurred: pottery usually contained animal fats, plant oils and
 388 plant waxes; when traces of diterpenoid compounds are detected, we suggest they correspond to
 389 residues of the surface treatment identified by Rageot et al. (2016). Plant products are also unequally
 390 distributed between houses. Plant oils are largely identified in pottery from House 1 and plant waxes
 391 in samples from House 3, but they both seem absent from House 23. No spatial data is available for

392 House 1 but in House 3, plant products occur only in vessels originating from the storage area (one of
393 them was identified in a pit closed by a granite slab), while animal fats were detected in pottery near
394 the hearth (Figure 7). Beeswax also seems to have been exploited differently from one house to
395 another. Absent from House 3, it was detected in potsherds from House 23 always mixed with
396 conifer resin – suggesting technical use. In samples from House 1, its co-occurrence with animal fat
397 or plant oil suggests that beeswax could be a residue of recipes assembling various commodities and
398 honey. As carbonised surface residues indicate that most of the samples from this house have been
399 heated, the use of beeswax as a sealant is very unlikely - beeswax melts at 60°C and is soluble in
400 animal fat (Charters et al., 1995; Regert et al., 2001).

401 The differential spatial distribution of substances contained and processed in pottery can be due to
402 the specificity of the sampling (waste area vs. inside of the habitation units), or to the differential
403 preservation of lipids between houses. These variations can also result from slight differences in the
404 organisation of domestic areas and activities from a house to another. However, these preliminary
405 results did not reveal any real specialisation in the activities, as already identified for Neolithic
406 settlements (Matlova et al., 2017; Vieugué, 2010).

407

408 5. Conclusion

409 The exceptional case of the site of Cuciurpula, located in the largely granitic island of Corsica,
410 provided an unique opportunity to explore the exploitation of natural substances during Protohistory
411 in the Mediterranean region, generally unfavourable to lipid preservation. The present study
412 revealed the diversity of substances consumed and used for both culinary and technical activities:
413 animal fats, plant oils and waxes, conifer resin, and beeswax. Furthermore, the careful recording of
414 the location of the potsherds inside domestic structures enabled us to tentatively reconstruct areas
415 of activity inside domestic units, and to the best of our knowledge, for the first time using organic
416 residue analysis. In particular, differences of pottery content between cooking and storage areas
417 were highlighted for one of the houses. Despite the globally homogenous pattern of exploitation of
418 natural substances at the site, we could also identify differential behaviours from one house to
419 another in cooking habits and adhesive making. These preliminary observations must be confirmed
420 by enlarging the sampling to include other houses with clear spatial distribution of pottery at the site
421 (e.g. House 1 and House 6; Peche-Quilichini et al., 2015) and in other sites from the first Iron Age in
422 Corsica.

423

424 Acknowledgments

425 We would like to thank Louise Purdue (Université Côte d'Azur, CNRS, CEPAM, France) for the help for
426 the pH measurement and the determination of carbonate content.

427 The study was partly funded by the *Mission pour l'interdisciplinarité* from CNRS (BIOGEOCHIMPOT
428 project) and is part of the thematic axes of LabEx ARCHIMEDE from "Investissement d'Avenir"
429 program ANR-11-LABX-0032-01.

430 Finally, we are grateful to the comments of the anonymous reviewers who helped improve the
431 manuscript.

432

433

434 References

435 Al-Rousan, W.M., Ajo, R.Y., Al-Ismaïl, K.M., Attlee, A., Shaker, R.R., Osaili, T.M., 2013. Characterization
436 of acorn fruit oils extracted from selected Mediterranean Quercus species. *Grasas Aceites* 64,
437 554–560. <http://dx.doi.org/10.3989/gya.023313>

438 Bloch, G., Francoy, T.M., Wachtel, I., Panitz-Cohen, N., Fuchs, S., Mazar, A., 2010. Industrial apiculture
439 in the Jordan valley during Biblical times with Anatolian honeybees. *Proc. Natl. Acad. Sci.* 107,
440 11240–11244. <https://doi.org/10.1073/pnas.1003265107>

441 Bronitsky, G., 1986. The use of materials science techniques in the study of pottery construction and
442 use. *Adv. Archaeol. Method Theory* 9, 209–276.

443 Bronzini de Caraffa, V., Giannettini, J., Maury, J., Gambotti, C., Luciani, A., Panighi, J., Berti, L., 2005.
444 Origine des variétés d'olivier (*Olea europaea* ssp. *europaea* var. *europaea*) présentes en
445 Corse déterminée à l'aide des marqueurs moléculaires, in: Marinval, P. (Ed.), *Modernité*
446 *Archéologique d'un Arbre Millénaire: L'olivier*, Archéo-Plantes. Hommes et Plantes de La
447 Préhistoire à Nos Jours. Centre d'Anthropologie, AEP AITAE, Toulouse, pp. 59–81.

448 Buckley, S.A., Clark, K.A., Evershed, R.P., 2004. Complex organic chemical balms of Pharaonic animal
449 mummies. *Nature* 431, 294–299. <https://doi.org/10.1038/nature02849>

450 Buonasera, T., 2007. Investigating the presence of ancient absorbed organic residues in groundstone
451 using GC–MS and other analytical techniques: a residue study of several prehistoric milling
452 tools from central California. *J. Archaeol. Sci.* 34, 1379–1390.
453 <https://doi.org/10.1016/j.jas.2006.10.028>

454 Carrer, F., Colonese, A.C., Lucquin, A., Guedes, E.P., Thompson, A., Walsh, K., Reitmaier, T., Craig,
455 O.E., 2016. Chemical analysis of pottery demonstrates prehistoric origin for high-altitude
456 alpine dairying. *PLoS One* 11, e0151442. <https://doi.org/10.1371/journal.pone.0151442>

457 Castellano, L., Ravazzi, C., Furlanetto, G., Pini, R., Saliu, F., Lasagni, M., Orlandi, M., Perego, R.,
458 Degano, I., Valoti, F., 2017. Charred honeycombs discovered in Iron Age Northern Italy. A
459 new light on boat beekeeping and bee pollination in pre-modern world. *J. Archaeol. Sci.* 83,
460 26–40. <http://dx.doi.org/10.1016/j.jas.2017.06.005>

461 Charrié-Duhaut, A., Connan, J., Rouquette, N., Adam, P., Barbotin, C., de Rozières, M.-F., Tchaplà, A.,
462 Albrecht, P., 2007. The canopic jars of Rameses II: real use revealed by molecular study of
463 organic residues. *J. Archaeol. Sci.* 34, 957–967. <https://doi.org/10.1016/j.jas.2006.09.012>

464 Charters, S., Evershed, R., Blinkhorn, P., Denham, V., 1995. Evidence for the mixing of fats and waxes
465 in archaeological ceramics. *Archaeometry* 37, 113–127. <https://doi.org/10.1111/j.1475-4754.1995.tb00730.x>

466

467 Colombini, M.P., Modugno, F., Ribechini, E., 2005. Direct exposure electron ionization mass
468 spectrometry and gas chromatography/mass spectrometry techniques to study organic
469 coatings on archaeological amphorae. *J. Mass Spectrom.* 40, 675–687.
470 <https://doi.org/10.1002/jms.841>

471 Colonese, A.C., Hendy, J., Lucquin, A., Speller, C.F., Collins, M.J., Carrer, F., Gubler, R., Kühn, M.,
472 Fischer, R., Craig, O.E., 2017. New criteria for the molecular identification of cereal grains
473 associated with archaeological artefacts. *Sci. Rep.* 7. <https://doi.org/10.1038/s41598-017-06390-x>

474

475 Copley, M.S., Berstan, R., Dudd, S.N., Straker, V., Payne, S., Evershed, R.P., 2005a. Dairying in
476 antiquity. I. Evidence from absorbed lipid residues dating to the British Iron Age. *J. Archaeol.*
477 *Sci.* 32, 485–503. <https://doi.org/10.1016/j.jas.2004.07.004>

478 Copley, M.S., Berstan, R., Straker, V., Payne, S., Evershed, R.P., 2005b. Dairying in antiquity. II.
479 Evidence from absorbed lipid residues dating to the British Bronze Age. *J. Archaeol. Sci.* 32,
480 505–521. <https://doi.org/10.1016/j.jas.2004.07.005>

481 Copley, M.S., Bland, H.A., Rose, P., Horton, M., Evershed, R.P., 2005c. Gas chromatographic, mass
482 spectrometric and stable carbon isotopic investigations of organic residues of plant oils and
483 animal fats employed as illuminants in archaeological lamps from Egypt. *Analyst* 130, 860–
484 871. <https://doi.org/10.1039/b500403a>

485 Craig, O.E., Steele, V.J., Fischer, A., Hartz, S., Andersen, S.H., Donohoe, P., Glykou, A., Saul, H., Jones,
486 D.M., Koch, E., Heron, C.P., 2011. Ancient lipids reveal continuity in culinary practices across
487 the transition to agriculture in Northern Europe. *Proc. Natl. Acad. Sci.* 108, 17910–17915.
488 <https://doi.org/10.1073/pnas.1107202108>

489 Craig, O.E., Taylor, G., Mulville, J., Collins, M., Parker Pearson, M., 2005. The identification of
490 prehistoric dairying activities in the Western Isles of Scotland: an integrated biomolecular
491 approach. *J. Archaeol. Sci.* 32, 91–103. <https://doi.org/10.1016/j.jas.2004.06.009>
492 Cramp, L.J., Evershed, R.P., Lavento, M., Halinen, P., Mannermaa, K., Oinonen, M., Kettunen, J.,
493 Perola, M., Onkamo, P., Heyd, V., 2014a. Neolithic dairy farming at the extreme of agriculture
494 in northern Europe. *Proc. R. Soc. B Biol. Sci.* 281, 20140819.
495 <http://dx.doi.org/10.1098/rspb.2014.0819>
496 Cramp, L.J., Jones, J., Sheridan, A., Smyth, J., Whelton, H., Mulville, J., Sharples, N., Evershed, R.P.,
497 2014b. Immediate replacement of fishing with dairying by the earliest farmers of the
498 northeast Atlantic archipelagos. *Proc. R. Soc. B Biol. Sci.* 281, 20132372.
499 <http://dx.doi.org/10.1098/rspb.2013.2372>
500 Cramp, L.J., Whelton, H., Sharples, N., Mulville, J., Evershed, R.P., 2015. Contrasting patterns of
501 resource exploitation on the Outer Hebrides and Northern Isles of Scotland during the Late
502 Iron Age and Norse Period revealed through organic residues in pottery. *J. N. Atl.* 9, 134–151.
503 <http://dx.doi.org/10.3721/037.002.sp909>
504 de Lanfranchi, F., 2005. De la technologie de la fabrication de l'huile d'oléastre à sa consommation :
505 l'exemple corso-sarde, in: Marinval, P. (Ed.), *Modernité Archéologique d'un Arbre Millénaire*:
506 L'olivier, Archéo-Plantes. Hommes et Plantes de La Préhistoire à Nos Jours. Centre
507 d'Anthropologie, AEP AITAE, Toulouse, pp. 117–135.
508 De Man, W., 1985. The effect of genotype and environment on the fatty acid content of barley
509 (*Hordeum vulgare* L.) grains. *Plant Cell Environ.* 8, 571–577. [https://doi.org/10.1111/j.1365-](https://doi.org/10.1111/j.1365-3040.1985.tb01695.x)
510 [3040.1985.tb01695.x](https://doi.org/10.1111/j.1365-3040.1985.tb01695.x)
511 Debono Spiteri, C., Gillis, R.E., Roffet-Salque, M., Castells Navarro, L., Guilaine, J., Manen, C.,
512 Muntoni, I.M., Segui, M.S., Urem-Kotsou, D., Whelton, H.L., Craig, O.E., Vigne, J.-D., Evershed,
513 R.P., 2016. Regional asynchronicity in dairy production and processing in early farming
514 communities of the northern Mediterranean. *Proc. Natl. Acad. Sci.* 113, 13594–13599.
515 <https://doi.org/10.1073/pnas.1607810113>
516 Decavallas, O., 2011. Etude de l'alimentation dans le domaine égéen au Néolithique et à l'Age du
517 bronze à partir de l'analyse chimique de résidus organiques conservés dans les poteries. PhD
518 Thesis. Université Michel de Montaigne Bordeaux 3.
519 DeLaune, R., Reddy, C., Patrick, W., 1981. Organic matter decomposition in soil as influenced by pH
520 and redox conditions. *Soil Biol. Biochem.* 13, 533–534.
521 Dudd, S.N., 1999. Molecular and isotopic characterisation of animal fats in archaeological pottery.
522 PhD Thesis. University of Bristol.
523 Dudd, S.N., Evershed, R.P., 1999. Unusual triterpenoid fatty acyl ester components of archaeological
524 birch bark tars. *Tetrahedron Lett.* 40, 359–362. [https://doi.org/10.1016/S0040-](https://doi.org/10.1016/S0040-4039(98)02311-9)
525 [4039\(98\)02311-9](https://doi.org/10.1016/S0040-4039(98)02311-9)
526 Dudd, S.N., Evershed, R.P., 1998. Direct demonstration of milk as an element of archaeological
527 economies. *Science* 282, 1478–1481. <https://doi.org/10.1126/science.282.5393.1478>
528 Dudd, S.N., Evershed, R.P., Gibson, A.M., 1999. Evidence for varying patterns of exploitation of
529 animal products in different prehistoric pottery traditions based on lipids preserved in
530 surface and absorbed residues. *J. Archaeol. Sci.* 26, 1473–1482.
531 <https://doi.org/10.1006/jasc.1998.0434>
532 Eglinton, G., Hamilton, R.J., 1967. Leaf epicuticular waxes. *Science* 156, 1322–1335.
533 <https://doi.org/10.1126/science.156.3780.1322>
534 Evershed, R.P., 2008a. Organic residue analysis in archaeology: the archaeological biomarker
535 revolution. *Archaeometry* 50, 895–924. <https://doi.org/10.1111/j.1475-4754.2008.00446.x>
536 Evershed, R.P., 2008b. Experimental approaches to the interpretation of absorbed organic residues in
537 archaeological ceramics. *World Archaeol.* 40, 26–47.
538 <http://dx.doi.org/10.1080/00438240801889373>
539 Evershed, R.P., 1993. Biomolecular archaeology and lipids. *World Archaeol.* 25, 74–93.
540 <https://doi.org/10.1080/00438243.1993.9980229>

541 Evershed, R.P., Arnot, K.I., Collister, J., Eglinton, G., Charters, S., 1994. Application of isotope ratio
542 monitoring gas-chromatography mass-spectrometry to the analysis of organic residues of
543 archaeological origin. *Analyst* 119, 909–914. <https://doi.org/10.1039/an9941900909>
544 Evershed, R.P., Dudd, S.N., Anderson-Stojanovic, V.R., Gebhard, E.R., 2003. New chemical evidence
545 for the use of combed ware pottery vessels as beehives in ancient Greece. *J. Archaeol. Sci.*
546 30, 1–12. <https://doi.org/10.1006/jasc.2001.0827>
547 Evershed, R.P., Heron, C., Goad, L.J., 1990. Analysis of organic residues of archaeological origin by
548 high-temperature gas chromatography and gas chromatography-mass spectrometry. *Analyst*
549 115, 1339–1342. <https://doi.org/10.1039/AN9901501339>
550 Evershed, R.P., Lockheart, M.J., 2007. Lipids, in: Briggs, D., Crowther, R.P. (Eds.), *Palaeobiology II*.
551 Blackwell Science, Oxford, pp. 247–253.
552 Evershed, R.P., Mottram, H.R., Dudd, S.N., Charters, S., Stott, A.W., Lawrence, G.J., Gibson, A.M.,
553 Conner, A., Blinkhorn, P.W., Reeves, V., 1997. New criteria for the identification of animal
554 fats preserved in archaeological pottery. *Naturwissenschaften* 84, 402–406.
555 <https://doi.org/10.1007/s001140050417>
556 Evershed, R.P., Payne, S., Sherratt, A.G., Copley, M.S., Coolidge, J., Urem-Kotsu, D., Kotsakis, K.,
557 Özdoğan, M., Özdoğan, A.E., Nieuwenhuys, O., Akkermans, P., Bailey, D., Andeescu, R.R.,
558 Campbell, S., Farid, S., Hodder, I., Yalman, N., Özbaşaran, M., Bıçakci, E., Garfinkel, Y., Levy,
559 T., Burton, M.M., 2008. Earliest date for milk use in the Near East and southeastern Europe
560 linked to cattle herding. *Nature* 455, 528–531. <https://doi.org/10.1038/nature07180>
561 Evershed, R.P., Stott, A.W., Raven, A., Dudd, S.N., Charters, S., Leyden, A., 1995. Formation of long-
562 chain ketones in ancient-pottery vessels by pyrolysis of acyl lipids. *Tetrahedron Lett.* 36,
563 8875–8878. [https://doi.org/10.1016/0040-4039\(95\)01844-8](https://doi.org/10.1016/0040-4039(95)01844-8)
564 Evershed, R.P., Vaughan, S.J., Dudd, S.N., Soles, J.S., 1997. Fuel for thought? Beeswax in lamps and
565 conical cups from Late Minoan Crete. *Antiquity* 71, 979–985.
566 <https://doi.org/10.1017/S0003598X00085860>
567 Fabian, C., Reimann, C., Fabian, K., Birke, M., Baritz, R., Haslinger, E., Team, T.G.P., 2014. GEMAS:
568 Spatial distribution of the pH of European agricultural and grazing land soil. *Appl. Geochem.*
569 48, 207–216. <http://dx.doi.org/10.1016/j.apgeochem.2014.07.017>
570 Fanti, L., 2015. La fonction des récipients céramiques dans les sociétés du Néolithique moyen B (4500-
571 4000 cal BC) en Sardaigne centre-occidentale (Italie): Indices fonctionnels, économiques,
572 interculturels à partir de l'analyse des caractéristiques morphométriques, des résidus
573 organiques et des traces d'usure des poteries. PhD Thesis. Université Nice Sophia Antipolis.
574 Fanti, L., Drieu, L., Mazuy, A., Blasco, T., Lugliè, C., Regert, M., Usai, A., submitted. Investigating
575 behaviors of Middle Neolithic B societies in Sardinia (Italy, 4500-4000 cal BC) through a
576 multistep analysis of pottery use. *J. Archaeol. Sci.*
577 Faraco, M., Pennetta, A., Fico, D., Eramo, G., Beqiraj, E., Muntoni, I.M., De Benedetto, G.E., 2016.
578 Bitumen in potsherds from two Apulian Bronze Age settlements, Monopoli and Torre Santa
579 Sabina: Composition and origin. *Org. Geochem.* 93, 22–31.
580 <http://dx.doi.org/10.1016/j.orggeochem.2016.01.004>
581 Garnier, N., Cren-Olivé, C., Rolando, C., Regert, M., 2002. Characterization of archaeological beeswax
582 by electron ionization and electrospray ionization mass spectrometry. *Anal. Chem.* 74, 4868–
583 4877. <https://doi.org/10.1021/ac025637a>
584 Garnier, N., Rolando, C., Hotje, J.M., Tokarski, C., 2009. Analysis of archaeological triacylglycerols by
585 high resolution nanoESI, FT-ICR MS and IRMPD MS/MS: Application to 5th century BC-4th
586 century AD oil lamps from Olbia (Ukraine). *Int. J. Mass Spectrom.* 284, 47–56.
587 <https://doi.org/10.1016/j.ijms.2009.03.003>
588 Gülz, P.-G., 1994. Epicuticular leaf waxes in the evolution of the plant kingdom. *J. Plant Physiol.* 143,
589 453–464. [https://doi.org/10.1016/S0176-1617\(11\)81807-9](https://doi.org/10.1016/S0176-1617(11)81807-9)
590 Hayek, E.W., Krenmayr, P., Lohninger, H., Jordis, U., Sauter, F., Moche, W., 1991. GC/MS and
591 chemometrics in archaeometry. *Fresenius J. Anal. Chem.* 340, 153–156.
592 <https://doi.org/10.1007/BF00324471>

593 Heron, C., Evershed, R.P., Goad, L.J., 1991. Effects of migration of soil lipids on organic residues
594 associated with buried potsherds. *J. Archaeol. Sci.* 18, 641–659.
595 [https://doi.org/10.1016/0305-4403\(91\)90027-M](https://doi.org/10.1016/0305-4403(91)90027-M)

596 Heron, C., Nemcek, N., Bonfield, K., Dixon, D., Ottaway, B., 1994. The chemistry of Neolithic beeswax.
597 *Naturwissenschaften* 81, 266–269. <https://doi.org/10.1007/BF01131579>

598 Heron, C., Nilsen, G., Stern, B., Craig, O., Nordby, C., 2010. Application of lipid biomarker analysis to
599 evaluate the function of ‘slab-lined pits’ in Arctic Norway. *J. Archaeol. Sci.* 37, 2188–2197.
600 <https://doi.org/10.1016/j.jas.2010.03.016>

601 Heron, C., Shoda, S., Barcons, A.B., Czebreszuk, J., Eley, Y., Gorton, M., Kirleis, W., Kneisel, J., Lucquin,
602 A., Müller, J., 2016. First molecular and isotopic evidence of millet processing in prehistoric
603 pottery vessels. *Sci. Rep.* 6, 38767. <https://doi.org/10.1038/srep38767>

604 Isaksson, S., Karlsson, C., Eriksson, T., 2010. Ergosterol (5,7,2-ergostatrien-3 β -ol) as a potential
605 biomarker for alcohol fermentation in lipid residues from prehistoric pottery. *J. Archaeol. Sci.*
606 37, 3263–3268. <https://doi.org/10.1016/j.jas.2010.07.027>

607 Kolattukudy, P., 1970. Plant waxes. *Lipids* 5, 259–275. <https://doi.org/10.1007/BF02532477>

608 Kostyukevich, Y., Solovyov, S., Kononikhin, A., Popov, I., Nikolaev, E., 2016. The investigation of the
609 bitumen from ancient Greek amphora using FT ICR MS, H/D exchange and novel spectrum
610 reduction approach. *J. Mass Spectrom.* 51, 430–436. <https://doi.org/10.1002/jms.3769>

611 León-Camacho, M., Viera-Alcaide, I., Vicario, I.M., 2004. Acorn (*Quercus* spp.) fruit lipids: saponifiable
612 and unsaponifiable fractions: a detailed study. *J. Am. Oil Chem. Soc.* 81, 447–453.
613 <https://doi.org/10.1007/s11746-004-0921-8>

614 Lopes, I.M.G., Bernardo-Gil, M.G., 2005. Characterisation of acorn oils extracted by hexane and by
615 supercritical carbon dioxide. *Eur. J. Lipid Sci. Technol.* 107, 12–19.
616 <https://doi.org/10.1002/ejlt.200401039>

617 Magdeleine, J., Ottaviani, J.C., 1983. Découverte de vanneries datées du Néolithique moyen, dans un
618 abri près de Saint-Florent en Corse. *Bull. Société Préhistorique Fr.* 80, 24–32.

619 Manzano, E., García, A., Alarcón, E., Cantarero, S., Contreras, F., Vílchez, J., 2015. An integrated
620 multianalytical approach to the reconstruction of daily activities at the Bronze Age
621 settlement in Peñalosa (Jaén, Spain). *Microchem. J.* 122, 127–136.
622 <https://doi.org/10.1016/j.microc.2015.04.021>

623 Matlova, V., Roffet-Salque, M., Pavlu, I., Kyselka, J., Sedlarova, I., Filip, V., Evershed, R.P., 2017.
624 Defining pottery use and animal management at the Neolithic site of Bylany (Czech
625 Republic). *J. Archaeol. Sci. Rep.* 14, 262–274. <http://dx.doi.org/10.1016/j.jasrep.2017.05.028>

626 McGovern, P.E., Hall, G.R., Mirzoian, A., 2013. A biomolecular archaeological approach to ‘Nordic
627 grog.’ *Dan. J. Archaeol.* 2, 112–131. <http://dx.doi.org/10.1080/21662282.2013.867101>

628 Medeiros, P.M., Simoneit, B.R., 2007. Analysis of sugars in environmental samples by gas
629 chromatography–mass spectrometry. *J. Chromatogr. A* 1141, 271–278.
630 <https://doi.org/10.1016/j.chroma.2006.12.017>

631 Moucawi, J., Fustec, E., Jambu, P., Jacquesy, R., 1981. Decomposition of lipids in soils: free and
632 esterified fatty acids, alcohols and ketones. *Soil Biol. Biochem.* 13, 461–468.
633 [https://doi.org/10.1016/0038-0717\(81\)90035-3](https://doi.org/10.1016/0038-0717(81)90035-3)

634 Nergiz, C., Dönmez, I., 2004. Chemical composition and nutritive value of *Pinus pinea* L. seeds. *Food*
635 *Chem.* 86, 365–368. <https://doi.org/10.1016/j.foodchem.2003.09.009>

636 Oudemans, T.F.M., Boon, J.J., 1991. Molecular archaeology: Analysis of charred (food) remains from
637 prehistoric pottery by pyrolysis-gas chromatography mass-spectrometry. *J. Anal. Appl.*
638 *Pyrolysis* 20, 197–227. [https://doi.org/10.1016/0165-2370\(91\)80073-h](https://doi.org/10.1016/0165-2370(91)80073-h)

639 Peche-Quilichini, K., Bec Drelon, N., Biancifiori, E., Boutoille, L., Martin, L., Mayca, J., Rageot, M.,
640 Recchia-Quiniou, J., 2014a. L’habitation 6 de Cuciurpula (Serra-di-Scopamena et Sorbollano,
641 Corse-du-Sud). *Éléments de définition chronologique, culturelle et économique du Bronze*
642 *final de Corse méridionale*, in: Sénépart, I., Leandri, F., Cauliez, J., Perrin, T., Thirault, E. (Eds.),
643 *Chronologie de La Préhistoire Récente Dans Le Sud de La France. Acquis 1992-2012. Actualité*

644 de La Recherche. Actes Des Xème Rencontres Méridionales de Préhistoire Récente. Archives
645 d'Ecologie Préhistorique, Toulouse, pp. 323–337.

646 Peche-Quilichini, K., Delvau, S., Lachenal, T., de Lanfranchi, F., 2014b. Espaces de circulation, espaces
647 de cheminement. Quelques «pistes» de réflexion pour le Sud de la Corse entre Bronze final
648 et premier âge du Fer. Bull. Société Préhistorique Fr. 111, 101–128.

649 Peche-Quilichini, K., Delvau, S., Lachenal, T., Grevey, A.-L., Amici, S., de Lanfranchi, F., Bartoloni, G.,
650 Milletti, M., Bergerot, L., Mottolese, C., 2015. L'espace domestique au Bronze final et au
651 premier âge du Fer dans le sud de la Corse. Trab. Prehist. 72, 259–281.
652 <https://doi.org/10.3989/tp.2015.12154>

653 Peche-Quilichini, K., Paolini-Saez, H., Martin, L., Drieu, L., Arobba, D., in press. Des balanophages en
654 Corse entre Bronze moyen et premier âge du Fer ? Une Protohistoire du gland en contexte
655 insulaire, in: Auxiette, G., Mugne, C., Peake, R., Toulemonde, F. (Eds.), Autour de La Table :
656 L'alimentation à l'âge Du Bronze et Au Premier âge Du Fer, Actes de La Journée d'Etude de
657 l'APRAB (Saint-Germain-En-Laye, Mars 2017). Bull. Association pour la Promotion de la Rech.
658 Age du Bronze.

659 Peche-Quilichini, K., Rageot, M., Regert, M., 2017. Systèmes de réparation, de réutilisation et de
660 recyclage des vaisselles céramiques protohistoriques de Corse. Bull. Société Préhistorique Fr.
661 114, 137–166.

662 Rageot, M., Peche-Quilichini, K., Py, V., Filippi, J.-J., Fernandez, X., Regert, M., 2016. Exploitation of
663 beehive products, plant exudates and tars in Corsica during the Early Iron Age. Archaeometry
664 58, 315–332. <https://doi.org/10.1111/arcm.12172>

665 Raven, A.M., vanBergen, P.F., Stott, A.W., Dudd, S.N., Evershed, R.P., 1997. Formation of long-chain
666 ketones in archaeological pottery vessels by pyrolysis of acyl lipids. J. Anal. Appl. Pyrolysis
667 40–41, 267–285. [https://doi.org/10.1016/s0165-2370\(97\)00036-3](https://doi.org/10.1016/s0165-2370(97)00036-3)

668 Regert, M., 2011. Analytical strategies for discriminating archeological fatty substances from animal
669 origin. Mass Spectrom. Rev. 30, 177–220. <https://doi.org/10.1002/mas.20271>

670 Regert, M., 2007. Elucidating pottery function using a multi-step analytical methodology combining
671 infrared spectroscopy, mass spectrometry and chromatographic procedures, in: Barnard, H.,
672 Eerkens, J.W. (Eds.), Theory and Practice of Archaeological Residue Analysis. BAR
673 International Series 1650. Archaeopress, Oxford, pp. 61–76.

674 Regert, M., Colinart, S., Degrand, L., Decavallas, O., 2001. Chemical alteration and use of beeswax
675 through time: accelerated ageing tests and analysis of archaeological samples from various
676 environmental contexts. Archaeometry 43, 549–569. <https://doi.org/10.1111/1475-4754.00036>

677

678 Regert, M., Rolando, C., 2002. Identification of archaeological adhesives using direct inlet electron
679 ionization mass spectrometry. Anal. Chem. 74, 965–975. <https://doi.org/10.1021/ac0155862>

680 Regert, M., Vacher, S., Moulherat, C., Decavallas, O., 2003. Adhesive production and pottery function
681 during the Iron Age at the site of Grand Aunay (Sarthe, France). Archaeometry 45, 101–120.
682 <https://doi.org/10.1111/1475-4754.00098>

683 Ribechini, E., Modugno, F., Colombini, M.P., Evershed, R.P., 2008. Gas chromatographic and mass
684 spectrometric investigations of organic residues from Roman glass unguentaria. J.
685 Chromatogr. A 1183, 158–169. <https://doi.org/10.1016/j.chroma.2007.12.090>

686 Rice, P.M., 1987. Pottery analysis, a sourcebook. The University of Chicago Press, Chicago and
687 London.

688 Roffet-Salque, M., Regert, M., Evershed, R.P., Outram, A.K., Cramp, L.J., Decavallas, O., Dunne, J.,
689 Gerbault, P., Mileto, S., Mirabaud, S., Pääkkönen, M., Smyth, J., Šoberl, L., Whelton, H.L.,
690 Alday-Ruiz, A., Asplund, H., Bartkowiak, M., Bayer-Niemeier, E., Belhouchet, L., Bernardini, F.,
691 Budja, M., Cooney, G., Cubas, M., Danaher, E.M., Diniz, M., Domboróczy, L., Fabbri, C.,
692 González-Urquijo, J.E., Guilaine, J., Hachi, S., Hartwell, B.N., Hofmann, D., Hohle, I., Ibáñez,
693 J.J., Karul, N., Kherbouche, F., Kiely, J., Kotsakis, K., Lueth, F., Mallory, J.P., Manen, C.,
694 Marciniak, A., Maurice-Chabard, B., Mc Gonigle, M.A., Mulazzani, S., Özdoğan, M., Perić, O.S.,
695 Perić, S.R., Petrasch, J., Pétrequin, A.-M., Pétrequin, P., Poensgen, U., Pollard, C.J., Poplin, F.,

696 Radi, G., Stadler, P., Stäuble, H., Tasić, N., Urem-Kotsou, D., Vuković, J.B., Walsh, F., Whittle,
697 A., Wolfram, S., Zapata-Peña, L., Zoughlami, J., 2015. Widespread exploitation of the
698 honeybee by early Neolithic farmers. *Nature* 527, 226–230.
699 <https://doi.org/10.1038/nature15757>

700 Roumpou, M., Heron, C., Andreou, S., Kotsakis, K., 2003. Organic Residues in Storage Vessels from
701 the Toumba Thessalonikis, in: Gibson, A. (Ed.), *Prehistoric Pottery: People, Pattern and*
702 *Purpose*. BAR International Series 1156. Archaeopress, Oxford, pp. 189–200.

703 Salque, M., Bogucki, P.I., Pyzel, J., Sobkowiak-Tabaka, I., Grygiel, R., Szmyt, M., Evershed, R.P., 2013.
704 Earliest evidence for cheese making in the sixth millennium BC in northern Europe. *Nature*
705 493, 522–525. <https://doi.org/10.1038/nature11698>

706 Salque, M., Radi, G., Tagliacozzo, A., Uria, B.P., Wolfram, S., Hohle, I., Stäuble, H., Whittle, A.,
707 Hofmann, D., Pechtl, J., Schade-Lindig, S., Eisenhauer, U., Evershed, R.P., 2012. New insights
708 into the Early Neolithic economy and management of animals in Southern and Central
709 Europe revealed using lipid residue analyses of pottery vessels. *Anthropozoologica* 47, 45–
710 61. <https://doi.org/10.5252/az2012n2a4>

711 Šoberl, L., Horvat, M., Zibrat Gasparic, A., Sraka, M., Evershed, R., Budja, M., 2014. Neolithic and
712 Eneolithic activities inferred from organic residue analysis of pottery from Mala Triglavca,
713 Movernava vas and Ajdovska jama, Slovenia. *Doc. Praehist.* 41, 149–179.
714 <https://doi.org/10.4312\dp.41.9>

715 Spiteri, C., Muntoni, I.M., Craig, O.E., 2017. Dietary Practices at the Onset of the Neolithic in the
716 Western Mediterranean Revealed Using a Combined Biomarker and Isotopic Approach, in:
717 García Puchol, O., Salazar García, D.C. (Eds.), *Times of Neolithic Transition along the Western*
718 *Mediterranean, Fundamental Issues in Archaeology*. Springer, pp. 253–279.

719 Steele, V.J., Stern, B., 2017. Red Lustrous Wheelmade ware: analysis of organic residues in Late
720 Bronze Age trade and storage vessels from the eastern Mediterranean. *J. Archaeol. Sci. Rep.*
721 16, 641–657. <https://doi.org/10.1016/j.jasrep.2017.06.027>

722 Tchapla, A., Méjanelle, P., Bleton, J., Goursaud, S., 2004. Characterisation of embalming materials of
723 a mummy of the Ptolemaic era. Comparison with balms from mummies of different eras. *J.*
724 *Sep. Sci.* 27, 217–234. <https://doi.org/10.1002/jssc.200301607>

725 Terral, J., Alonso, N., Buxo, R., Chatti, N., Fabre, L., Fiorentino, G., Marinval, P., Perez, G., Pradat, B.,
726 Rovira, N., 2005. Nouvelles données sur l’histoire et la biogéographie de la domestication de
727 l’olivier en Méditerranée nord-occidentale : la mémoire des endocarpes, in: Marinval, P.
728 (Ed.), *Modernité Archéologique d’un Arbre Millénaire: L’olivier, Archéo-Plantes. Hommes et*
729 *Plantes de La Préhistoire à Nos Jours*. Centre d’Anthropologie, AEP AITAE, Toulouse, pp. 83–
730 102.

731 Tulloch, A., 1971. Beeswax: structure of the esters and their component hydroxy acids and diols.
732 *Chem. Phys. Lipids* 6, 235–265. [https://doi.org/10.1016/0009-3084\(71\)90063-6](https://doi.org/10.1016/0009-3084(71)90063-6)

733 Tulloch, A.P., Hoffman, L.L., 1973. Leaf wax of *Triticum aestivum*. *Phytochemistry* 12, 2217–2223.
734 [https://doi.org/10.1016/0031-9422\(73\)85123-4](https://doi.org/10.1016/0031-9422(73)85123-4)

735 Vieugué, J., 2010. Du vase aux tessons: formes et fonctions de la céramique du Néolithique ancien de
736 l’habitat de Kovačevo (6200-5500 av. J.-C., Bulgarie). PhD thesis. Université de Paris I
737 Panthéon-Sorbonne.
738