



**HAL**  
open science

## Repeated Piperacillin-Tazobactam Plasma Concentration Measurements in Severely Obese Versus Nonobese Critically Ill Septic Patients and the Risk of Under- and Overdosing

Boris Jung, Martin Mahul, Dominique Breilh, Rachel Legeron, Jeremy Signe, H el ene Jean-Pierre, Anne-Catrin Uhlemann, Nicolas Molinari, Samir Jaber

### ► To cite this version:

Boris Jung, Martin Mahul, Dominique Breilh, Rachel Legeron, Jeremy Signe, et al.. Repeated Piperacillin-Tazobactam Plasma Concentration Measurements in Severely Obese Versus Nonobese Critically Ill Septic Patients and the Risk of Under- and Overdosing. *Critical Care Medicine*, 2017, 45 (5), pp.e470 - e478. 10.1097/CCM.0000000000002287 . hal-01779526

**HAL Id: hal-01779526**

**<https://hal.science/hal-01779526>**

Submitted on 9 Apr 2020

**HAL** is a multi-disciplinary open access archive for the deposit and dissemination of scientific research documents, whether they are published or not. The documents may come from teaching and research institutions in France or abroad, or from public or private research centers.

L'archive ouverte pluridisciplinaire **HAL**, est destin ee au d ep ot et  a la diffusion de documents scientifiques de niveau recherche, publi es ou non,  emanant des  tablissements d'enseignement et de recherche fran ais ou  trangers, des laboratoires publics ou priv es.

# Repeated Piperacillin-Tazobactam Plasma Concentration Measurements in Severely Obese Versus Nonobese Critically Ill Septic Patients and The Risk of Under and Overdosing

Boris Jung, MD, PhD<sup>1,2</sup>; Martin Mahul, MD, MSc<sup>1,2</sup>; Dominique Breilh, PharmD, PhD<sup>3</sup>; Rachel Legeron, PharmD<sup>3</sup>; Jeremy Signe, MD<sup>1,2</sup>; Helene Jean-Pierre, MD<sup>4</sup>; Anne-Catrin Uhlemann, MD, PhD<sup>5</sup>; Nicolas Molinari, PhD<sup>6</sup>; Samir Jaber, MD, PhD<sup>1,2</sup>

**Objective:** Obesity and critical illness modify pharmacokinetics of antibiotics, but piperacillin-tazobactam continuous IV infusion pharmacokinetics has been poorly studied in obese critically ill patients. We aimed to compare pharmacokinetics of piperacillin in severely obese and nonobese patients with severe sepsis or septic shock. We hypothesized that plasma concentration variability would expose the critically ill to both piperacillin under and overdosing.

**Methods:** Prospective comparative study. Consecutive critically ill severely obese (body mass index, > 35 kg/m<sup>2</sup>) and non-

obese patients (body mass index, < 30 kg/m<sup>2</sup>) were treated with 16 g/2 g/24 hr continuous piperacillin-tazobactam infusion. Piperacillin plasma concentration was measured every 12 hours over a 7-day period by high-pressure liquid chromatography. Unbound piperacillin plasma concentration and fractional time of plasma concentration spent over 64 mg/L (4-fold the minimal inhibitory concentration for *Pseudomonas aeruginosa*) were compared between the two groups. We performed 5,000 Monte Carlo simulations for various dosing regimens and minimal inhibitory concentration and calculated the probability to spend 100% of the time over 64 mg/L.

**Results:** We enrolled 11 severely obese and 12 nonobese patients and obtained 294 blood samples. We did not observe a statistically significant difference in piperacillin plasma concentrations over time between groups. The fractional time over 64 mg/L was 64% (43–82%) and 93% (85–100%) in obese and nonobese patients, respectively,  $p = 0.027$  with intra- and intergroup variability. Five nonobese and two obese patients experienced potentially toxic piperacillin plasma concentrations. When 64 mg/L was targeted, Monte Carlo simulations showed that 12 g/1.5 g/24 hr was inadequate in both groups and 16 g/2 g/24 hr was adequate only in nonobese patients.

**Conclusion:** Using a conventional dosing of 16 g/2 g/24 hr continuous infusion, obese patients were more likely than nonobese patients to experience piperacillin underdosing when facing high minimal inhibitory concentration pathogens. The present study suggests that piperacillin drug monitoring might be necessary in the sickest patients who are at the highest risk of unpredictable plasma concentration exposing them to overdose, toxicity, underdosing, and treatment failure.

**Key Words:** Monte Carlo simulation; obesity; piperacillin-tazobactam; population pharmacokinetic; septic shock

<sup>1</sup>Department of Critical Care Medicine and Anesthesiology, Saint Eloi Teaching Hospital, Montpellier, France.

<sup>2</sup>Centre National de la Recherche Scientifique (CNRS 9214) - Institut National de la Santé et de la Recherche Médicale (INSERM U-1046), University of Montpellier, France.

<sup>3</sup>Laboratory of Clinical Pharmacokinetics and Clinical Pharmacy, PKPD Group, INSERM U1034, Haut-Lévêque hospital, CHU Bordeaux, University of Bordeaux, Pessac, France.

<sup>4</sup>Department of Microbiology, Arnaud de Villeneuve Teaching Hospital, Montpellier, France.

<sup>5</sup>Division of Infectious Diseases, Department of Medicine, Columbia University Medical Center, New York, NY.

<sup>6</sup>Department of Medical Statistics, Arnaud de Villeneuve Teaching Hospital, Montpellier, France.

Drs. Jung and Mahul contributed equally to the study.

Supplemental digital content is available for this article. Direct URL citations appear in the printed text and are provided in the HTML and PDF versions of this article on the journal's website (<http://journals.lww.com/ccmjournal>).

Supported, in part, by Montpellier University Hospital Research Grant 2011 (UF 8739).

Dr. Jung reports personal fees from Merck (Whitehouse station, NJ) and Astellas (Tokyo, Japan) without relations with the present study. Dr. Jaber reports personal fees from Maquet, Draeger, Hamilton Medical, and Fisher Paykel without relations with the present study. The remaining authors have disclosed that they do not have any potential conflicts of interest.

The frequency of obesity is increasing worldwide and may affect up to 30% of critically ill patients (1) leading to multiple challenges in the care of this particular population (2–4).

**TABLE 1. Demographic and Outcome Characteristics**

Variable	Nonobese ( <i>n</i> = 12)	Obese ( <i>n</i> = 11)	<i>p</i>
Age (yr)	67 ± 15	61 ± 10	0.25
Male, <i>n</i> (%)	7 (58)	3 (27)	0.15
Total body weight (kg)	67 ± 11	125 ± 38	< 0.01
Body mass index (kg/m <sup>2</sup> )	23 ± 4	45 ± 12	< 0.01
Past medical history, <i>n</i> (%)			
Alcohol abuse	1 (8)	1 (9)	0.94
Tobacco use	1 (8)	5 (45)	0.06
Diabetes mellitus	2 (17)	3 (18)	0.92
Hypertension	6 (50)	6 (54)	0.83
Stage New York Heart Association III or IV heart failure	1 (8)	0	0.33
Stage 3 or above chronic kidney disease	3 (25)	1 (9)	0.33
Liver cirrhosis	1 (8)	0	0.33
Stage III or above chronic obstructive pulmonary disease	1 (8)	4 (36)	0.26
Active malignancy	2 (17)	1 (9)	0.59
Severity scores upon ICU admission			
Simplified Acute Physiology Score II	51 ± 16	46 ± 16	0.67
Sequential Organ Failure Assessment	9 ± 5	8 ± 4	0.66
Knaus scale			
A	0	1 (9)	0.34
B	7 (67)	4 (36)	0.31
C	5 (33)	5 (45)	0.86
D	0	1 (9)	0.34
Reason for ICU admission			
Septic shock	11 (92)	8 (73)	0.23
Severe sepsis	1 (8)	2 (18)	0.48
Acute respiratory failure	0 (0)	1 (9)	0.28
Albumin blood level (g/dL) upon ICU admission	26.5 (24.5–29.5)	31 (24–33)	0.38
Estimated glomerular filtration rate (mL/min/1.73m <sup>2</sup> ) upon ICU admission	29.6 (20.8–49.3)	43.7 (29.2–62.6)	0.48
Renal replacement therapy during the ICU stay, <i>n</i> (%)	2 (17)	1 (9)	0.58
Clinical response			0.08
Cure	6 (50)	7 (64)	
Failure	5 (42)	1 (9)	
Indeterminate	1 (8)	3 (27)	
Site of infection			
Lung	4 (33)	6 (55)	0.33
Intra-abdominal	6 (50)	3 (27)	0.53
Blood	2 (17)	0	0.16
Urinary tract	0	1 (9)	0.34
Endocarditis	0	1 (9)	0.34

(Continued)

**TABLE 1. (Continued). Demographic and Outcome Characteristics**

Variable	Nonobese (n = 12)	Obese (n = 11)	p
Microbiology	9 (75)	9 (91)	0.33
Enterobacteriaceae	7 (58)	2 (18)	0.05
<i>Citrobacter freundii</i>	0	0	1
<i>Enterobacter aerogenes</i>	0	0	1
<i>Enterobacter cloacae</i>	1 (8)	0	0.33
<i>Escherichia coli</i>	4 (33)	1 (9)	0.17
<i>Klebsiella pneumoniae</i>	1 (8)	1 (9)	0.9
<i>Morganella morganii</i>	1 (8)	0	0.33
<i>Proteus mirabilis</i>	0	0	1
Other Gram-negative bacteria	2 (17)	3 (27)	0.82
<i>Burkholderia</i> species	1 (8)	0	0.33
<i>Haemophilus influenzae</i>	0	1 (9)	0.34
<i>Pseudomonas aeruginosa</i>	1 (8)	2 (18)	0.51
<i>Stenotrophomonas maltophilia</i>	0	0	1
Gram-positive bacteria	1 (8)	5 (45)	0.05
<i>Enterococcus faecalis</i>	0	2 (18)	0.16
<i>Staphylococcus aureus</i>	0	2 (18)	0.16
Coagulase-negative <i>Staphylococcus</i>	0	0	1
<i>Streptococcus</i> species	1 (8)	1 (9)	0.9

Values are presented as mean values  $\pm$  SD. The Knaus chronic health status score describes health status prior to ICU admission with: A, normal health status; B, moderate activity limitation; C, severe activity limitation due to chronic disease; and D, bedridden patient. Chronic obstructive pulmonary disease severity was assessed using the Global Initiative for Chronic Obstructive Lung Disease staging. Chronic kidney disease severity was stratified according to Kidney Disease, Improving Global Outcomes guidelines.

Obese patients are also more frequently affected by severe sepsis (5). One of the main available interventions among the few initiatives that have been associated with improved outcomes in septic shock is shortening the time from onset of sepsis symptoms to administration of adequate antibiotics (6–8). Because of its broad spectrum, bactericidal action, and well-tolerated drug profile, piperacillin-tazobactam (PTZ) is one of the most prescribed antibiotics for severe infections in the ICU.

Both obesity and septic shock are associated with an increase in volume of distribution of  $\beta$ -lactams (9). The renal clearance of  $\beta$ -lactams might be elevated if the patient demonstrates a supranormal glomerular filtration rate that is common in obese patients (10) and at the early stage of sepsis (11). Renal clearance might also be decreased because of obesity-associated chronic kidney failure or secondary to sepsis-related acute kidney injury (10). Therefore, plasma concentration and half-life might be highly unpredictable in obese critically ill septic patients exposing them to both under and overdosing. Compared to bolus infusion, extended and/or continuous PTZ infusion lead to a higher probability of pharmacokinetics (PK) target attainment (12, 13) and possibly have a positive impact on outcome (14). However, to date, the pharmacodynamic and pharmacokinetic (PKPD)

profile of continuous PTZ regimen in obese and nonobese critically ill patients has not been specifically compared.

This prospective study aimed to compare the piperacillin (PIP) PKPD in a homogenous population of critically ill severely obese and nonobese patients with severe sepsis or septic shock treated by a continuous 16 g/2 g/24 hr PTZ infusion. We hypothesized that obese patients would be more likely to experience PIP underdosing than nonobese patients. We also hypothesized that both groups would present plasma PIP variability suggesting the need for PIP therapeutic drug monitoring in the ICU setting.

## METHODS

### Patients

Between February 2012 and May 2013, we conducted a prospective comparative study in a 16-bed medical and surgical ICU (ClinicalTrials NCT01517815). All consecutive patients over 18 years old presenting with severe sepsis or septic shock needing a broad-spectrum antibiotic therapy with PTZ and with an expected ICU stay of more than or equal to 5 days were eligible for inclusion. Severe sepsis and septic shock were diagnosed



using Surviving Sepsis Campaign criteria (8). Patients were divided into two groups considering their body mass index (BMI) ( $\text{BMI} [\text{kg}/\text{m}^2] = \text{weight} [\text{kg}]/\text{height}^2 [\text{m}^2]$ ): a nonobese group for BMI less than  $30 \text{ kg}/\text{m}^2$  and a severely obese group for BMI greater than  $35 \text{ kg}/\text{m}^2$ . Daily weight was obtained using the ICU bed scale. Exclusion criteria included a history of allergy to penicillins or documented resistance to PTZ. At inclusion, demographic variables, severity scores, laboratory values (creatinine, albumin, and glomerular filtration rate), and the site of infection were collected. “Kidney failure” was defined as a glomerular filtration rate of  $30 \text{ mL}/\text{min}$  or below (15). In accordance with the current guidelines (16), criteria for continuous venovenous hemofiltration initiation included both metabolic emergencies and persistent acute kidney injury (Acute Kidney Injury Network 2–3) despite resuscitation for at least 12 hours. The current study was approved by the hospital medical-ethics committee (EudraCT number: 2011-005233-38) and was carried out in concordance with The International Conference on Harmonization of Technical Requirements for Registration of Pharmaceuticals for Human Use Guidelines for Good Clinical Practice (17). Informed consent was obtained from every patient or his/her next-of-kin if the patient was unable to provide informed consent. We evaluated the clinical response to PTZ at the test-of-cure visit scheduled at the end of drug therapy. Clinical responses were defined as follows (18): 1) cure, the complete resolution or significant improvement of signs or symptoms of the initial infection, such that additional antibacterial therapy was not required; 2) failure, death related to the initial infectious process, persisting or recurrent infection of the initial septic site, or the need for additional antibacterial therapy for ongoing symptoms of the initial infection; and 3) indeterminate, evaluation could not be done for any reason, or extenuating circumstances prevented from classification as cure or failure.

### Design of the Study

Patients received a 1-hour PTZ  $4 \text{ g}/0.5 \text{ g}$  IV bolus followed by a continuous drip of PTZ  $16 \text{ g}/2 \text{ g}$  diluted in  $48 \text{ mL}$  sterile water and administered via electric infusion pump at a  $2 \text{ mL}/\text{hr}$  rate.

Venous blood samples ( $5 \text{ mL}$ ) were collected as follows: a first sample was collected 1 hour after the end of the  $4/0.5 \text{ g}$  bolus and then samples were collected every 12 hours over a 7-day period for a maximum of 15 samples for each patient. Blood samples were immediately centrifuged at  $2,500 \text{ rpm}$  for 10 minutes, and serum was stored at  $-80^\circ\text{C}$  until analysis. Serum samples were transported on dry ice to the Laboratory of Clinical Pharmacokinetics and Clinical Pharmacy (Bordeaux, France) for measurement of both free PIP and tazobactam (TAZ) concentrations. Sampling was stopped in case of discharge from the ICU, early end of treatment, or death before the end of study. Clinicians were blinded to the results at the time of clinical assessment and during the antibiotic course.

### PIP and TAZ Assay

Unbound fractions of PIP and TAZ in serum were measured as previously described (19). Briefly, high-performance liquid chromatography was used with a gradient system, acetonitrile from

$5\%$  (TAZ) to  $25\%$  (PIP) for mobile phase adjusted at pH equals to 6.5 with a solution of phosphate buffer. PIP and TAZ in serum were quantified after adding  $1 \text{ mL}$  of the sample with  $20 \mu\text{L}$  of trifluoroacetic acid. The lower limit of detection of PIP was  $0.25 \mu\text{g}/\text{mL}$  in serum, and linearity was validated from  $0.25$  to  $500 \mu\text{g}/\text{L}$ . All results were within  $5\%$  at all levels, and the assay was validated and conducted according to criteria specified by the U.S. Food and Drug Administration guidance on bioanalysis (20).

### PK Analysis

Total body clearance (TCL) was calculated as the ratio between the maintenance dose administration rate ( $K_0$ ) over the steady-state PIP concentrations ( $C_{\text{ss}}$ ) using the formula  $\text{TCL} = K_0/C_{\text{ss}}$ . The time to reach the steady state was 3.5–5-fold the half-time of elimination starting 12 hours after the continuous infusion.  $C_{\text{ss}}$  concentrations heterogeneity are presented as mean and sds and coefficient of variation (CV%) (sd over mean) for each patient.

### Monte Carlo Simulations

Pharmacodynamic exposures were modeled for PIP by Monte Carlo simulations ( $n = 5,000$ ) using R software (R version 2.15.2; The R Foundation for Statistical Computing; <https://www.r-project.org>). Three PTZ dosing regimens were simulated:  $12 \text{ g}/1.5 \text{ g}/24 \text{ hr}$ ,  $16 \text{ g}/2 \text{ g}/24 \text{ hr}$ , and  $20 \text{ g}/2.5 \text{ g}/24 \text{ hr}$  in obese ( $\text{BMI} > 35 \text{ kg}/\text{m}^2$ ) and non-obese patients ( $\text{BMI} < 30 \text{ kg}/\text{m}^2$ ). Similarly to other  $\beta$ -lactams, the most important PK variable predicting bacteriological and clinical efficacy for PIP is the fractional amount of time spent with a serum concentration above a specific minimal inhibitory concentration (MIC). For each dosing regimen and BMI group, we calculated the probability of target attainment to spend more than  $100\%$  of the dosing interval over specific MICs ( $16$ ,  $32$ , and  $64 \text{ mg}/\text{L}$ ).

### Endpoints

The endpoints of the present study were the steady-state PK parameters of PIP, which were compared between obese and nonobese critically ill patients hospitalized for severe sepsis or septic shock in the ICU. We described the pharmacodynamics of PIP by calculating the probability of target attainment at different MICs and different PTZ dosing.

### Statistical Analysis

The results are expressed as mean  $\pm$  SD or median  $\pm$  interquartile range (25–75th percentiles) or number and percentage and compared between nonobese and obese patients using Student, Mann-Whitney  $U$ , or chi-square tests according to the distribution of the variables. Because of the repeated measures, a generalized mixed model was used to model the concentration-time profiles (the multivariate model was selected with a stepwise procedure). Because the Sequential Organ Failure Assessment (SOFA) score was a significant component of the population, the model included the time and SOFA score as dependent variables. The Pearson correlation coefficient was used to assess the relationship between clearance, weight, and BMI. A multivariate analysis assessed whether BMI, measured creatinine clearance ( $[\text{urine creatinine concentration} \times \text{urine output}]/[\text{plasma creatinine concentration}]$ ), and SOFA score

**TABLE 2. Pharmacokinetic Variables in Obese and Nonobese Critically Ill**

Variable	PIP Concentration (mg/L)	PIP CV (%)	PIP Clearance (L/h)	TAZ Concentration (mg/L)	TAZ CV (%)	PIP Over TAZ Ratio
Severely obese						
Patient 1	55.83 ± 27.79	49.78	49.77	6.50 ± 3.12	47.97	8.6
Patient 2	66.47 ± 19.31	29.05	29.04	21.61 ± 4.07	18.86	3.1
Patient 3	172.27 ± 39.60	22.99	22.99	57.48 ± 13.88	24.14	3.0
Patient 4	75.06 ± 18.15	24.18	24.18	14.53 ± 3.54	24.36	5.2
Patient 5	89.58 ± 19.11	21.34	21.34	28.93 ± 6.90	23.83	3.1
Patient 6	57.17 ± 29.89	52.28	52.28	9.90 ± 9.55	96.51	5.8
Patient 7	64.05 ± 12.37	19.31	19.31	20.93 ± 12.56	59.99	3.1
Patient 8	82.45 ± 31.08	37.70	37.70	44.63 ± 11.79	26.41	1.8
Patient 9	28.86 ± 10.01	34.68	34.68	11.09 ± 3.13	28.26	2.6
Patient 10	176.01 ± 66.26	37.65	37.65	37.75 ± 10.73	28.42	4.7
Patient 11	59.61 ± 15.27	25.61	25.61	15.36 ± 6.18	40.25	3.9
Nonobese						
Patient 1	47.57 ± 14.71	28.81	42.04	9.45 ± 1.50	15.87	5.0
Patient 2	175.44 ± 55.03	31.37	11.40	37.63 ± 18.17	48.29	4.7
Patient 3	84.54 ± 21.34	25.24	23.66	22.93 ± 9.91	43.21	3.7
Patient 4	148.46 ± 30.04	20.23	13.47	37.30 ± 6.13	16.44	4.0
Patient 5	245.35 ± 31.73	12.93	8.15	89.3 ± 27.34	30.62	2.7
Patient 6	283.27 ± 63.82	22.53	7.06	53.15 ± 12.43	23.38	5.3
Patient 7	141.00 ± 52.51	37.24	14.18	42.38 ± 15.85	37.38	3.3
Patient 8	86.31 ± 31.28	36.24	23.17	43.19 ± 11.94	27.65	2.0
Patient 9	112.90 ± 17.13	15.17	17.71	41.00 ± 6.08	14.82	2.8
Patient 10	88.51 ± 21.41	24.19	22.60	25.35 ± 11.64	45.94	3.5
Patient 11	95.94 ± 24.14	25.16	20.85	37.09 ± 5.31	14.32	2.6
Patient 12	79.47 ± 9.77	12.29	25.17	19.14 ± 4.09	21.35	4.2
Severely obese	84.31 ± 47.14	32.23 ± 11.25	23.72 ± 42.43	24.43 ± 16.15	38.09 ± 22.97	3.5 ± 2.9
Nonobese	140.11 ± 69.21	23.87 ± 8.58	14.27 ± 28.90	40.77 ± 18.91	29.40 ± 12.64	3.4 ± 3.7
<i>p</i>	< 0.01	0.12	0.03	< 0.01	0.23	0.86

CV = coefficient of variation (%) (calculated as  $sd/mean$ ), PIP clearance = piperacillin total body clearance, PIP concentration = piperacillin concentration at steady state, TAZ concentration = tazobactam concentration at steady state.

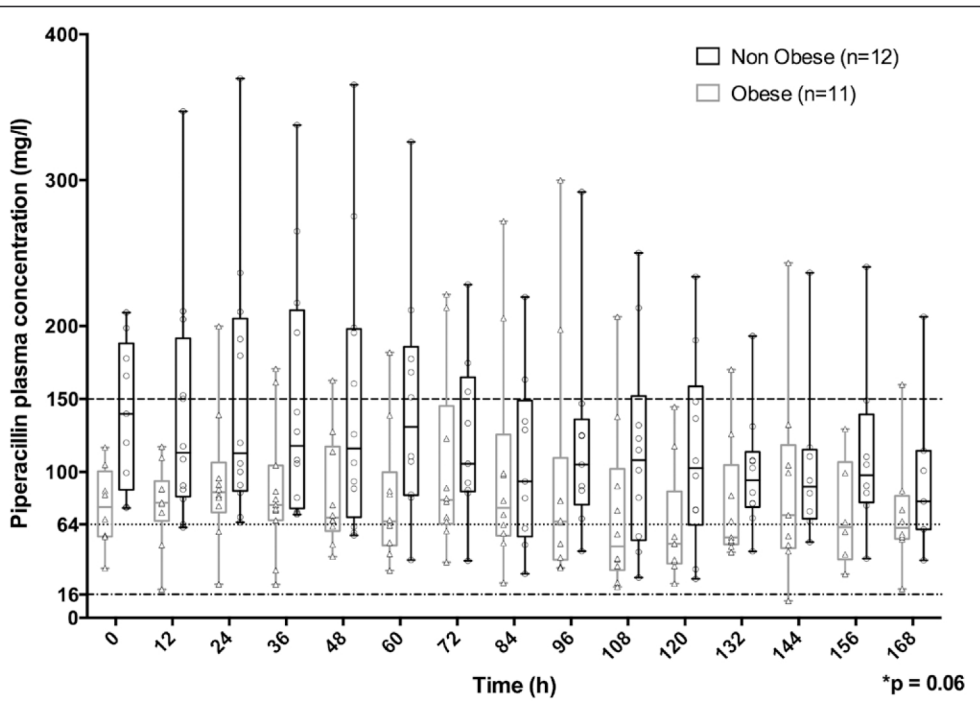
over time were associated with PIP plasma concentration and was included in the Monte Carlo simulation. We hypothesized that obese patients would present with plasma concentrations of PIP reduced by 50% compared with nonobese patients with a  $SD$  corresponding to a third of the expected concentrations in nonobese patients. We calculated that eight patients per group would be necessary to test our hypothesis with a one-tailed  $\alpha$  risk of 5% and a  $\beta$  risk of 10%. Intention to treat statistical analysis was performed by the medical statistical department of the Montpellier University Hospital (NM), with R software (The R Foundation for Statistical Computing). A  $p$  value of less than 0.05 was considered statistically significant.

## RESULTS

### Patients

A total of 12 nonobese (BMI of  $23 \pm 4 \text{ kg/m}^2$ ) critically ill patients and 11 severely obese (BMI of  $45 \pm 12 \text{ kg/m}^2$ ) critically ill patients receiving PTZ for septic shock or severe sepsis were included in the study, and a total of 294 blood samples were collected (Table 1). Nine patients developed criteria for kidney failure, and three patients needed renal replacement therapy during their ICU stay (Table 1). Pneumonia and peritonitis were the two main sources of sepsis with a documented site of infection in 18 (79%) of the cases (Table 1; **supplemental material**, Supplemental Digital Content 1,





**Figure 1.** Piperacillin blood concentrations (median, quartiles, and individual values) over the 7-d study period for nonobese ( $n = 12$ ) and severely obese ( $n = 11$ ) patients. The *Pseudomonas aeruginosa* minimal inhibitory concentration breakpoint (16 mg/L), 4-fold the breakpoint (64 mg/L), and the potential piperacillin toxic concentration threshold (150 mg/L) are represented as *dashed lines*. Over the study period, piperacillin concentration was compared between the two groups of patients using a mixed logistic model, which took into account the Sequential Organ Failure Assessment (SOFA) severity score. \*Between obese and nonobese patients over time, adjusted to SOFA score.

<http://links.lww.com/CCM/C405>; and **Supplemental 1**, Supplemental Digital Content 2, <http://links.lww.com/CCM/C406>.

**PK Analysis**

Clearance for PIP almost doubled in obese compared to nonobese patients (Table 2) and was correlated with both total body weight ( $p < 0.01$ ) and BMI ( $p = 0.01$ ) but neither with ideal nor lean body weight. Using the continuous IV administration of 16 g/2 g/24 hr of PTZ regimen, no patient experienced a significant amount of time below the cutoff of 16 mg/L. The 150 mg/L threshold has been previously associated with neurotoxicity (21), and time spent above this threshold was observed in five nonobese and two obese patients (Fig 1). PIP plasma concentration variability was observed in both groups (Fig 1 and Table 2) but also in every patient with extreme values from 12 to 370 mg/L (Fig. 2, A and B). Although raw PIP plasma concentrations were different among groups (Table 2), when time and repeated measures were considered, we did not observe a statistically significant difference in PIP plasma concentration (Fig 1). With no difference between groups, we observed a mean PIP concentration drop over time of 0.15 mg/L/hr (24 mg/L/wk) over the stay. Two nonobese patients and one obese patient needed continuous hemofiltration and PIP concentration ranged in these patients from 40 to 370 mg/L (Fig. 2, A and B). Creatinine clearance was measured in 27 occasions upon the physician’s request. PIP concentration and creatinine

clearance were not statistically correlated (Supplemental 2, Supplemental Digital Content 3, <http://links.lww.com/CCM/C407>). A multivariate analysis showed that BMI, measured creatinine clearance, and SOFA score over time were associated with PIP plasma concentration ( $p < 0.01$ ). The PIP over TAZ ratio was not impacted by weight (Table 2). Using a mixed model to describe the concentration-time profiles with time and SOFA score as dependent variables, median time spent over 64 mg/L was 93% (85–100%) in nonobese and 64% (43–82%) in obese patients ( $p = 0.027$ ) (Fig. 1). When four times the breakpoint of *Pseudomonas aeruginosa* was considered (64 mg/L), eight obese (72%) and five (42%) non-obese patients experienced time below 64 mg/L (Fig. 2, A and B).

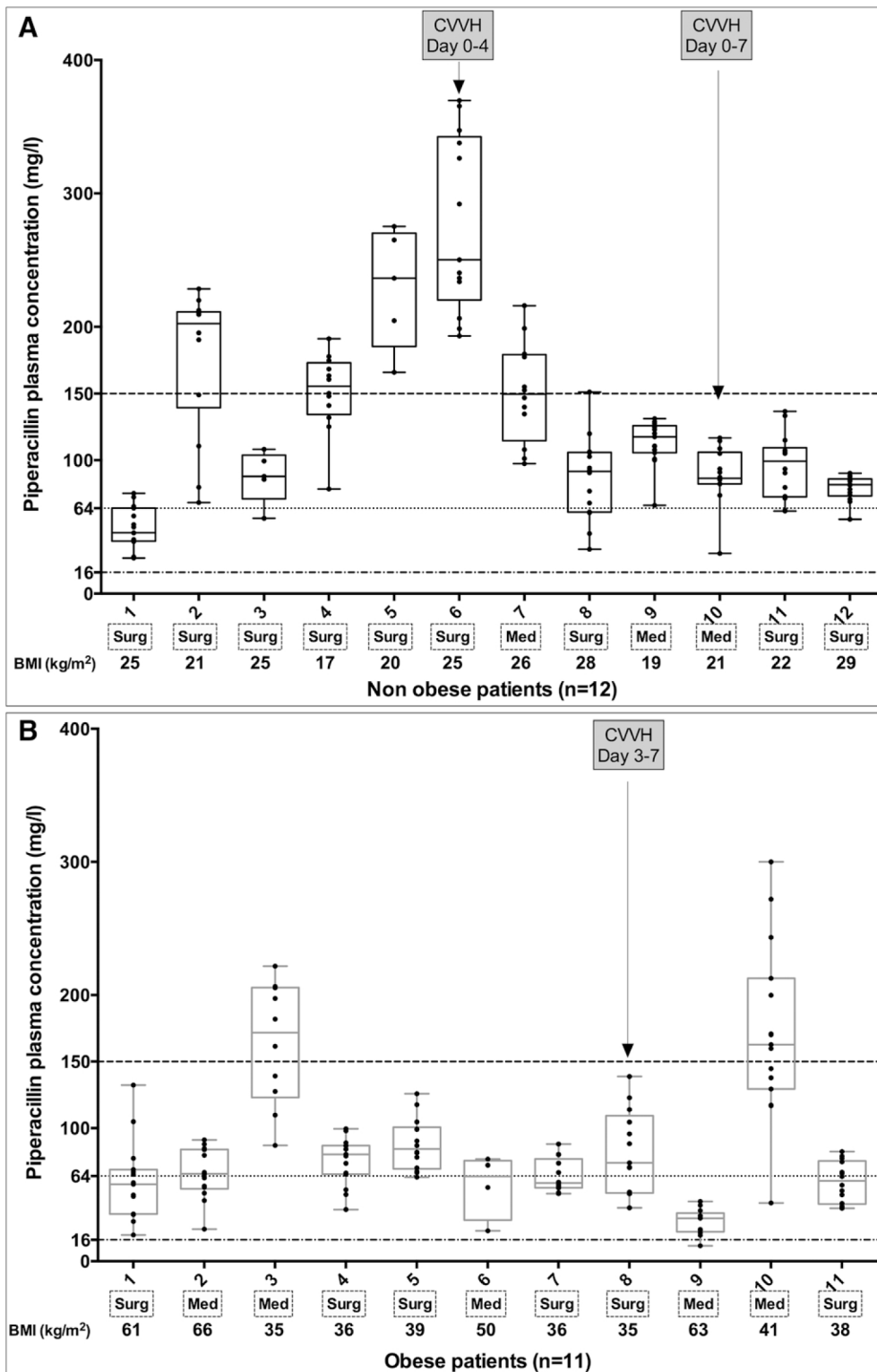
**Monte Carlo Simulation**

Table 3 presents the probability of target attainment of spending 100% of the time over MIC breakpoints of 16, 32, and 64 and the toxic cutoff of 150 mg/L with different dosing regimens for critically ill septic obese and nonobese patients. A PTZ regimen of 16 g/2 g/24 hr was appropriate for a target MIC of up to 64 mg/L except in obese patients. The 12 g/1.5 g/24 hr PTZ regimen was associated with a low probability of reaching the target when 64 mg/L was considered as a cutoff, independent of the weight of the patients.

**DISCUSSION**

In this prospective comparative study, we observed that despite a continuous IV infusion, PIP plasma PK levels showed intra- and interindividual variability over the 7-day study period in both severely obese and nonobese critically ill, thus exposing patients to both underdosing and potentially toxic PIP concentrations. We did not observe a statistically significant difference in PIP plasma concentration over time between groups. However, severely obese patients were more likely to experience PIP underdosing when assuming a plasma target of 64 mg/L, which is four times the breakpoint for *P. aeruginosa*. This study favors PIP therapeutic drug monitoring in critically ill patients and especially in obese critically ill who face unpredictable PIP plasma concentrations.

Obesity is affecting a growing population in the ICU, but few studies have evaluated PIP PK in obese critically ill patients



**Figure 2.** Box plots showing all piperacillin plasma concentrations among the 12 individual nonobese patients over the 7-d study period. *P. aeruginosa* minimal inhibitory concentration breakpoint (16 mg/L), 4-fold the breakpoint (64 mg/L), and the potential piperacillin toxic concentration threshold (150 mg/L) are represented as dashed lines. Continuous venovenous hemofiltration (CVVH) was used from day 0 to day 4 in patient 6 and from day 0 to day 7 in patient 10. Med = medical admission, Surg = surgical admission as defined by surgery in the 48 hr before ICU admission.

(22–24). These studies have either compared critically ill or non-critically ill obese patients (22), described PIP PK in nonsevere critically ill obese patients (23) or described PIP PK with only one

plasma concentration measurement after a 30-min PTZ 4g/0.5g bolus (24). A recent post hoc analysis of a large dataset that combined several PTZ doses, intermittent and continuous IV administrations, and total and unbound PIP concentration measurements reported that obesity and altered renal clearance were associated with a high frequency of low PIP plasma concentration (25). Our study is in line with these results but was specifically designed to assess both intergroup and intragroup over time variability. The present study design allowed the prospective comparison of PIP PK between nonobese and obese critically ill all treated with PTZ for severe sepsis or septic shock over a 7-day period with a mean of 12 time points per patient.

Despite the presence of nine patients with criteria for kidney failure, PIP CL was three to five times faster than previously reported in critically obese patients (22, 23) in line with the variability of renal clearance in the critically ill. Nonrenal elimination of PIP by high fluid output drains in some of the surgical patients may also have occurred (26). The PIP over TAZ ratio was not different between groups but higher than reported in obese critically ill (22) or in critically ill needing renal replacement therapy (27) suggesting that PIP monitoring alone would reflect TAZ concentration kinetics. A higher ratio of PIP over TAZ plasma concentration has been sparsely linked to a better efficacy in experimental models (28).

In the present study, the continuous infusion was associated with a dramatic PIP concentration variability between groups, over time and in each patient group. Furthermore,

PIP concentration dropped by 24 mg/L/wk suggesting that some patients would have needed extra PTZ bolus. On the other hand, some patients experienced very high plasma concentrations, above the supposed toxic cutoff of 150 mg/L which might be associated with renal and neurologic toxicities in large datasets (29). Although PIP plasma concentration variability with discontinuous infusion has been reported in noncritically ill (30) and critically ill patients (21, 31, 32), the continuous infusion regimen should theoretically mitigate the plasma concentration variability. In the present study, a multivariate model showed that the SOFA score and creatinine clearance were associated with PIP concentration kinetic over time. Alteration in PK parameters stability over time and extra renal CL may also have influenced PIP concentrations over the study period. PIP plasma concentration was constantly above the *P. aeruginosa* breakpoint of 16 mg/L. Although the classical target for penicillin is to maintain a concentration above MIC for 40–50% of the time (33), recent studies reported that higher drug over MIC ratio and longer time above MIC might be necessary to ensure clinical and microbiological response (34–36). In the present study, when considering a 4-fold breakpoint for *P. aeruginosa* (64 mg/L) during 100% of the time period, obese patients were more likely to experience underdosing than nonobese patients.

This study has a number of limitations. First, our sample size was relatively small but comparable to other studies in the field (22, 23, 32, 37). Second, critical illness has been both associated with augmented renal clearance and impaired renal clearance and matching renal function between groups would have allowed more accurate comparison between groups. Not excluding patients needing renal replacement therapy might also have had an impact on drug concentration. However, our study attempted to reflect bedside management and reports unpredictable and highly variable concentrations in both groups. The present study was not designed to specifically address the relation between measured creatinine clearance and PIP plasma concentration. Third, we did not measure tissue concentrations, and any conclusions based on plasma concentrations must be interpreted with caution as PTZ penetration into tissues is also subject to variability (12, 36, 38). Finally, PTZ was infused with the same 4g/0.5g bolus and

16g/2g continuous regimen because we expected that dose adaptations based on weight and glomerular filtration rate would have been inadequate (36).

In conclusion, despite limitations related to kidney function and the small numbers of patients, our prospective study suggests that in nonobese but more particularly in severely obese critically ill patients, PIP plasma concentration varies over time, among groups, and also within each patient despite a continuous regimen of 16g/2g/24hr. Although most of the patients spent more than 50% of the time above the *P. aeruginosa* breakpoint of 16 mg/L, half of them experienced very high concentrations. Monte Carlo simulations show that 12g/1.5g/24hr was associated with the risk of underdosing when higher concentration over MIC was considered. The present study suggests that PIP drug monitoring might be necessary in the sickest patients who are at the highest risk of unpredictable plasma concentration exposing them to overdose, toxicity and underdosing and treatment failure.

## REFERENCES

1. Finkielman JD, Gajic O, Afessa B: Underweight is independently associated with mortality in post-operative and non-operative patients admitted to the intensive care unit: A retrospective study. *BMC Emerg Med* 2004; 4:3
2. De Jong A, Molinari N, Pouzeratte Y, et al: Difficult intubation in obese patients: Incidence, risk factors, and complications in the operating theatre and in intensive care units. *Br J Anaesth* 2015; 114:297–306
3. De Jong A, Molinari N, Sebbane M, et al: Feasibility and effectiveness of prone position in morbidly obese patients with ARDS: A case-control clinical study. *Chest* 2013; 143:1554–1561
4. De Jong A, Jung B, Chanques G, et al: Obesity and mortality in critically ill patients: Another case of the Simpson paradox? *Chest* 2012; 141:1637–1638; author reply 1638
5. Wang HE, Griffin R, Judd S, et al: Obesity and risk of sepsis: A population-based cohort study. *Obesity (Silver Spring)* 2013; 21:E762–E769
6. Kumar A, Roberts D, Wood KE, et al: Duration of hypotension before initiation of effective antimicrobial therapy is the critical determinant of survival in human septic shock. *Crit Care Med* 2006; 34:1589–1596
7. Bagshaw SM, Lapinsky S, Dial S, et al; Cooperative Antimicrobial Therapy of Septic Shock (CATSS) Database Research Group: Acute kidney injury in septic shock: Clinical outcomes and impact of duration of hypotension prior to initiation of antimicrobial therapy. *Intensive Care Med* 2009; 35:871–881
8. Dellinger RP, Levy MM, Rhodes A, et al; Surviving Sepsis Campaign Guidelines Committee including The Pediatric Subgroup: Surviving Sep-

**TABLE 3. Probability of Target Attainment for Specific Minimal Inhibitory Concentrations With Different Dosing Regimen of Piperacillin-Tazobactam in Monte Carlo Simulation**

Targeted Minimum Inhibitory Concentration (mg/L)	Probability of Target Attainment (%)					
	PTZ 12g/1.5g/24 hr		PTZ 16g/2g/24 hr		PTZ 20g/2.5g/24 hr	
	Obese	Nonobese	Obese	Nonobese	Obese	Nonobese
16	90	100	100	100	100	100
32	88	100	91	100	100	100
64	21	65	44	98	75	100
150	0	8	12	27	18	42

PTZ = piperacillin-tazobactam.

The optimal target was to spend 100% of the time over breakpoints minimum inhibitory concentrations of 16, 32, and 64 mg/L.



sis Campaign: International guidelines for management of severe sepsis and septic shock, 2012. *Intensive Care Med* 2013; 39:165–228

9. Falagas ME, Karageorgopoulos DE: Adjustment of dosing of antimicrobial agents for bodyweight in adults. *Lancet* 2010; 375:248–251
10. Shashaty MG, Stapleton RD: Physiological and management implications of obesity in critical illness. *Ann Am Thorac Soc* 2014; 11:1286–1297
11. Udy AA, Varghese JM, Altukroni M, et al: Subtherapeutic initial  $\beta$ -lactam concentrations in select critically ill patients: Association between augmented renal clearance and low trough drug concentrations. *Chest* 2012; 142:30–39
12. Boselli E, Breilh D, Rimmelé T, et al: Alveolar concentrations of piperacillin/tazobactam administered in continuous infusion to patients with ventilator-associated pneumonia. *Crit Care Med* 2008; 36:1500–1506
13. Lodise TP Jr, Lomaestro B, Drusano GL: Piperacillin-tazobactam for *Pseudomonas aeruginosa* infection: Clinical implications of an extended-infusion dosing strategy. *Clin Infect Dis* 2007; 44:357–363
14. Dulhunty JM, Roberts JA, Davis JS, et al: Continuous infusion of beta-lactam antibiotics in severe sepsis: A multicenter double-blind, randomized controlled trial. *Clin Infect Dis* 2013; 56:236–244
15. Nisula S, Kaukonen KM, Vaara ST, et al; FINNAKI Study Group: Incidence, risk factors and 90-day mortality of patients with acute kidney injury in Finnish intensive care units: The FINNAKI study. *Intensive Care Med* 2013; 39:420–428
16. Brochard L, Abroug F, Brenner M, et al; ATS/ERS/ESICM/SCCM/SRLF Ad Hoc Committee on Acute Renal Failure: An Official ATS/ERS/ESICM/SCCM/SRLF Statement: Prevention and Management of Acute Renal Failure in the ICU Patient: An international consensus conference in intensive care medicine. *Am J Respir Crit Care Med* 2010; 181:1128–1155
17. The National Kidney Foundation Kidney: Kidney Disease Outcomes Quality Initiative: Clinical Practice Guidelines for Chronic Kidney Disease: Evaluation, Classification, and Stratification. 2012. Available at: [http://www2.kidney.org/professionals/KDOQI/guidelines\\_ckd/p1\\_exec.htm](http://www2.kidney.org/professionals/KDOQI/guidelines_ckd/p1_exec.htm). Accessed February 17, 2017
18. Montravers P, Dupont H, Bedos JP, et al; Tigecycline Group: Tigecycline use in critically ill patients: A multicentre prospective observational study in the intensive care setting. *Intensive Care Med* 2014; 40:988–997
19. Boselli E, Breilh D, Cannesson M, et al: Steady-state plasma and intrapulmonary concentrations of piperacillin/tazobactam 4g/0.5g administered to critically ill patients with severe nosocomial pneumonia. *Intensive Care Med* 2004; 30:976–979
20. U.S. Department of Health and Human Services, Food and Drug Administration, Center for Drug Evaluation and Research (CDER), Center for Veterinary Medicine (CVM): Guidance for Industry Bioanalytical Method Validation. 2013. Available at: <http://www.fda.gov/downloads/Drugs/Guidance/ucm070107.pdf>. Accessed February 17, 2017
21. Blondiaux N, Wallet F, Favory R, et al: Daily serum piperacillin monitoring is advisable in critically ill patients. *Int J Antimicrob Agents* 2010; 35:500–503
22. Cheatham SC, Fleming MR, Healy DP, et al: Steady-state pharmacokinetics and pharmacodynamics of piperacillin and tazobactam administered by prolonged infusion in obese patients. *Int J Antimicrob Agents* 2013; 41:52–56
23. Sturm AW, Allen N, Rafferty KD, et al: Pharmacokinetic analysis of piperacillin administered with tazobactam in critically ill, morbidly obese surgical patients. *Pharmacotherapy* 2014; 34:28–35
24. Hites M, Taccone FS, Wolff F, et al: Broad-spectrum  $\beta$ -lactams in obese non-critically ill patients. *Nutr Diabetes* 2014; 4:e119
25. Alobaid AS, Brinkmann A, Frey OR, et al: What is the effect of obesity on piperacillin and meropenem trough concentrations in critically ill patients? *J Antimicrob Chemother* 2016; 71:696–702
26. Adnan S, Li JX, Wallis SC, et al: Pharmacokinetics of meropenem and piperacillin in critically ill patients with indwelling surgical drains. *Int J Antimicrob Agents* 2013; 42:90–93
27. Varghese JM, Jarrett P, Boots RJ, et al: Pharmacokinetics of piperacillin and tazobactam in plasma and subcutaneous interstitial fluid in critically ill patients receiving continuous venovenous haemodiafiltration. *Int J Antimicrob Agents* 2014; 43:343–348
28. Leleu G, Kitzis MD, Vallois JM, et al: Different ratios of the piperacillin-tazobactam combination for treatment of experimental meningitis due to *Klebsiella pneumoniae* producing the TEM-3 extended-spectrum beta-lactamase. *Antimicrob Agents Chemother* 1994; 38:195–199
29. Jensen JU, Hein L, Lundgren B, et al; Procalcitonin And Survival Study (PASS) Group: Kidney failure related to broad-spectrum antibiotics in critically ill patients: Secondary end point results from a 1200 patient randomised trial. *BMJ Open* 2012; 2:e000635
30. Li C, Kuti JL, Nightingale CH, et al: Population pharmacokinetics and pharmacodynamics of piperacillin/tazobactam in patients with complicated intra-abdominal infection. *J Antimicrob Chemother* 2005; 56:388–395
31. Sime FB, Roberts MS, Peake SL, et al: Does beta-lactam pharmacokinetic variability in critically ill patients justify therapeutic drug monitoring? A systematic review. *Ann Intensive Care* 2012; 2:35
32. Carlier M, Carrette S, Stove V, et al: Does consistent piperacillin dosing result in consistent therapeutic concentrations in critically ill patients? A longitudinal study over an entire antibiotic course. *Int J Antimicrob Agents* 2014; 43:470–473
33. Drusano GL: Antimicrobial pharmacodynamics: Critical interactions of 'bug and drug'. *Nat Rev Microbiol* 2004; 2:289–300
34. Wong G, Brinkman A, Benefield RJ, et al: An international, multicentre survey of  $\beta$ -lactam antibiotic therapeutic drug monitoring practice in intensive care units. *J Antimicrob Chemother* 2014; 69:1416–1423
35. De Waele JJ, Carrette S, Carlier M, et al: Therapeutic drug monitoring-based dose optimisation of piperacillin and meropenem: A randomised controlled trial. *Intensive Care Med* 2014; 40:380–387
36. Roberts JA, Abdul-Aziz MH, Lipman J, et al; International Society of Anti-Infective Pharmacology and the Pharmacokinetics and Pharmacodynamics Study Group of the European Society of Clinical Microbiology and Infectious Diseases: Individualised antibiotic dosing for patients who are critically ill: Challenges and potential solutions. *Lancet Infect Dis* 2014; 14:498–509
37. Seyler L, Cotton F, Taccone FS, et al: Recommended  $\beta$ -lactam regimens are inadequate in septic patients treated with continuous renal replacement therapy. *Crit Care* 2011; 15:R137
38. Felton TW, McCalman K, Malagon I, et al: Pulmonary penetration of piperacillin and tazobactam in critically ill patients. *Clin Pharmacol Ther* 2014; 96:438–448