

Figure 1

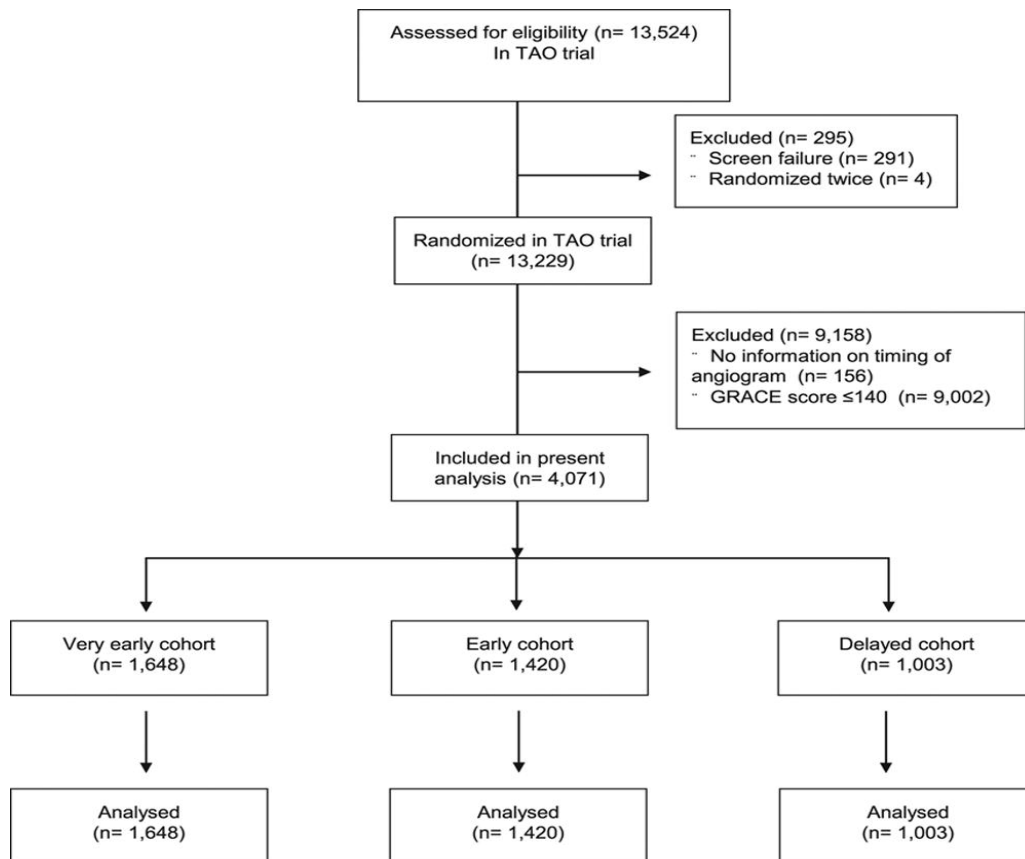


Table 1

	Very Early (n=1648)	Early (n=1420)	Delayed (n=1003)	P Value
Age, mean (SD), y	70.71 (8.18)	70.36 (8.44)	70.53 (8.56)	0.5148
Male sex, n (%)	1034 (62.7)	934 (65.8)	635 (63.3)	0.1949
Body mass index, mean (SD), kg/m ²	27.73 (4.77)	27.3 (4.9)	27.3 (4.79)	0.0213
Region, n (%)				<0.0001
Eastern Europe	864 (52.4)	420 (29.6)	210 (20.9)	
North America	156 (9.5)	201 (14.2)	143 (14.3)	
Western Europe	185 (11.2)	283 (19.9)	220 (21.9)	
Asia	130 (7.9)	147 (10.4)	104 (10.4)	
Others	313 (19)	369 (26)	326 (32.5)	
Medical history, n (%)				
Coronary artery disease	979 (59.4)	850 (59.9)	591 (58.9)	0.8979
Myocardial infarction	370 (22.5)	280 (19.7)	235 (23.4)	0.0613
PCI	1648 (100)	1419 (99.9)	1003 (100)	0.3931
CABG	156 (9.5)	144 (10.1)	105 (10.5)	0.6738
Stroke/TIA	133 (8.1)	88 (6.2)	81 (8.1)	0.0949
Peripheral arterial disease	111 (6.7)	104 (7.3)	61 (6.1)	0.4830
Congestive heart failure	162 (9.8)	121 (8.5)	102 (10.2)	0.3143
Hypertension	1320 (80.1)	1099 (77.4)	789 (78.7)	0.1873
Hypercholesterolemia	869 (52.7)	771 (54.3)	574 (57.2)	0.0784
Diabetes mellitus	560 (34)	443 (31.2)	342 (34.1)	0.1877
Current smoker	324 (19.7)	296 (20.8)	203 (20.2)	0.7174
Long-term antiplatelet therapy, n (%)				
Aspirin (previous use)	1379 (83.7)	1183 (83.3)	803 (80.1)	0.0420
Oral P2Y ₁₂ blocker (previous use)	1226 (74.4)	1078 (75.9)	748 (74.6)	0.5911
NSTEMI presentation				
Time since onset of last episode and randomization, mean (SD), h	10.75 (6.94)	14.15 (5.75)	15.61 (7.19)	<0.0001
Experience ≥2 episodes of rest pain	857 (52)	671 (47.3)	432 (43.1)	<0.0001
Elevated troponin, n (%)*	1487 (90.2)	1297 (91.3)	903 (90)	0.4618
Killip class, mean (SD)	1.19 (0.46)	1.18 (0.48)	1.21 (0.51)	0.3678
Electrocardiographic presentation, n (%)				
ST-segment depression >0.5 mm	381 (23.1)	338 (23.8)	217 (21.6)	0.4527
ST-segment depression >1 mm	964 (58.5)	826 (58.2)	574 (57.2)	0.8106
ST-segment elevation >0.5 mm	56 (3.4)	59 (4.2)	38 (3.8)	0.5457
ST-segment elevation >1 mm	42 (2.5)	44 (3.1)	47 (4.7)	0.0100
Left bundle-branch block	57 (3.5)	41 (2.9)	25 (2.5)	0.3464
TIMI risk score at baseline, n (%)				
0–2	171 (12)	130 (13)	171 (12)	
3–4	753 (53)	519 (51.7)	753 (53)	
5–7	496 (34.9)	354 (35.3)	496 (34.9)	
Anticoagulation, n (%)				
Standard	722 (43.9)	583 (41.3)	411 (41.3)	0.2461
Otamixaban	921 (56.1)	829 (58.7)	584 (58.7)	
Antiplatelet therapy received between randomization and discharge, n (%)				
Aspirin	1533 (93)	1318 (92.8)	938 (93.5)	0.7941
Oral P2Y ₁₂ blocker				
Clopidogrel	1341 (81.4)	1139 (80.2)	846 (84.3)	0.0314
Prasugrel	51 (3.1)	46 (3.2)	24 (2.4)	0.4483
Ticagrelor	42 (2.5)	46 (3.2)	21 (2.1)	0.2083
Duration of the index hospitalization, mean (SD), d	5.62 (4)	6.15 (5.11)	6.18 (3.7)	0.0005

CABG indicates coronary artery bypass graft; NSTEMI, non-ST-segment-elevation myocardial infarction; PCI, percutaneous coronary intervention; TIA, transient ischemic attack; and TIMI, Thrombolysis in Myocardial Infarction.

*Defined by a troponin T or a troponin I higher than the upper limit of normal.

Table 2

	Very Early (n=1648)	Early (n=1420)	Delayed (n=1003)	P Value
Access site, n (%) [*]				
Femoral	735 (47.67)	669 (53.01)	474 (54.30)	0.0018
Radial	820 (53.18)	600 (47.54)	405 (46.39)	0.0011
Anticoagulation duration, mean (SD), h [*]	8.0 (7.3)	9.3 (7.4)	12.3 (8.2)	<0.001
Culprit lesion, n (%) [†]				
LMS	106 (5.12)	96 (5.72)	69 (5.81)	0.6239
LAD	665 (32.13)	519 (30.91)	378 (31.82)	0.7206
LCx	406 (19.61)	332 (19.77)	231 (19.44)	0.9762
RCA	467 (22.56)	406 (24.18)	281 (23.65)	0.4898
Bypass graft lesion	47 (2.27)	43 (2.56)	38 (3.20)	0.2746
Angiographic thrombus, n (%) [‡]	364 (8.92)	274 (8.66)	189 (8.63)	0.9034
Baseline angiographic TIMI flow, n (%) [‡]				0.0044
0–1	884 (20.74)	653 (19.62)	441 (19.12)	
2	716 (16.80)	543 (16.32)	457 (19.81)	
3	2663 (62.47)	2132 (64.06)	1409 (61.07)	
Percentage of culprit stenosis, n (%) [†]				0.0002
<50	54 (2.61)	63 (3.76)	44 (3.72)	
50–90	1075 (51.98)	951 (56.74)	681 (57.61)	
>90	939 (45.41)	662 (39.50)	457 (38.66)	
Bystander stenosis, n (%) [‡]	2292 (52.54)	1801 (51.75)	1192 (50.08)	0.1542
Patients with bystander stenosis, n (%)				
Bystander stenosis, n (%) [§]	1411 (85.62)	1127 (79.37)	793 (79.06)	<0.0001
LMS	118 (5.29)	97 (5.64)	59 (5.15)	0.8227
LAD	638 (28.60)	479 (27.87)	344 (30.02)	0.4566
LCx	411 (18.42)	287 (16.70)	190 (16.58)	0.2533
RCA	554 (24.83)	436 (25.36)	293 (25.57)	0.8757
Bypass graft lesion	38 (1.70)	23 (1.34)	14 (1.22)	0.4651
Percentage of bystander stenosis, n (%) [§]				0.0326
<50	354 (15.89)	211 (12.29)	171 (14.99)	
50–90	1348 (60.50)	1082 (63.02)	694 (60.82)	
>90	526 (23.61)	424 (24.69)	276 (24.19)	
PCI of the culprit artery performed during the index procedure, n (%)	1372 (62.14)	1059 (58.44)	740 (57.77)	0.0135
Drug-eluting stent, n (%) [‡]	652 (40.45)	623 (48.52)	429 (47.93)	<0.0001
Stents by patient, mean (SD), n	1.33 (0.92)	1.43 (1.04)	1.38 (0.92)	0.1171
Stent diameter, mean (SD), mm	3.31 (2.88)	3.62 (6.56)	3.76 (4.41)	0.0564
Stent length, mean (SD), mm	20.23 (9.04)	20.24 (11.21)	20.07 (9.21)	0.9192
Final TIMI flow in the culprit artery, n (%)				
0–1	43 (3.14)	22 (2.08)	13 (1.76)	0.2799
2	45 (3.28)	31 (2.93)	24 (3.25)	
3	1282 (93.58)	1005 (94.99)	701 (94.99)	
PCI of the nonculprit artery performed during the index procedure, n (%)	249 (10.62)	230 (12.28)	157 (12.79)	0.0980
PCI of the nonculprit artery performed during a staged procedure, n (%)	8 (0.34)	18 (0.96)	14 (1.14)	0.0108
Bailout use of GpIIb/IIIa inhibitor, n (%) [#]	17 (1.10)	11 (0.87)	14 (1.60)	0.2885
Use of a thrombus extraction catheter, n (%) [#]	6 (0.39)	6 (0.48)	7 (0.80)	0.3846
Use of a vascular closure device system, n (%) [*]	119 (7.72)	129 (10.22)	91 (10.42)	0.0275
Thrombotic procedural complications, n (%) [#]	33 (3.12)	31 (3.87)	23 (4.09)	0.5293
Urgent CABG, n (%) [*]	0	0	0	NA
Secondary CABG, n (%) [#]	19 (1.24)	20 (1.58)	3 (0.34)	0.0269

CABG indicates coronary artery bypass graft; GpIIb/IIIa, glycoprotein IIb/IIIa; LAD, left anterior descending coronary artery; LCx, left circumflex coronary artery; LMS, left main stem; PCI, percutaneous coronary intervention; RCA, right coronary artery; and TIMI, Thrombolysis in Myocardial Infarction.

If >1 stent was used, the stent length denotes the sum of all stent lengths.

^{*}The denominator is the number of patients.

[†]The denominator is the number of culprit lesions.

[‡]The denominator is the number of lesions.

[§]The denominator is the number of bystander lesions.

^{||}The denominator is the number of patients with culprit lesion.

^{||}The denominator is the number of patients with bystander lesion.

[#]The denominator is the number of patients with PCI.

Table 3

	Very Early (n=1648)	Early (n=1420)	Delayed (n=1003)	P Value
End points at 7 d, n (%)				
Combined ischemic outcomes (all-cause death, MI)	108 (6.6 [5.4–7.8])	98 (6.9 [5.6–8.2])	80 (8.0 [6.3–9.7])	0.372
End point at 30 d, n (%)				
Combined ischemic outcomes (all-cause death, MI)	138 (8.4 [7.0–9.7])	129 (9.1 [7.6–10.6])	106 (10.6 [8.7–12.5])	0.163
All-cause death	50 (3.0 [2.2–3.9])	41 (2.9 [2.0–3.8])	34 (3.4 [2.3–4.5])	0.774
Cardiovascular death	45 (2.7 [1.9–3.5])	37 (2.6 [1.8–3.4])	32 (3.2 [2.1–4.3])	0.674
Stent thrombosis	19 (1.2 [0.6–1.7])	10 (0.7 [0.3–1.1])	11 (1.1 [0.5–1.7])	0.415
Nonfatal MI	88 (5.3 [4.3–6.4])	88 (6.2 [4.9–7.5])	73 (7.3 [5.7–8.9])	0.128
Unplanned revascularization	5 (0.3 [0.0–0.6])	14 (1.0 [0.5–1.5])	8 (0.8 [0.2–1.3])	0.056
Rehospitalization or prolongation of the hospitalization for recurrent MI	30 (1.8 [1.2–2.5])	33 (2.3 [1.5–3.1])	31 (3.1 [2.0–4.2])	0.107
End points at 180 d, n (%)				
Combined ischemic outcome (all-cause death, MI)	177 (10.7 [9.2–12.2])	191 (13.5 [11.7–15.2])	137 (13.7 [11.5–15.8])	0.028
All-cause death	73 (4.4 [3.4–5.4])	73 (5.1 [4.0–6.3])	51 (5.1 [3.7–6.4])	0.602
Cardiovascular death	63 (3.8 [2.9–4.7])	55 (3.9 [2.9–4.9])	41 (4.1 [2.9–5.3])	0.940
Stent thrombosis	24 (1.5 [0.9–2.0])	19 (1.3 [0.7–1.9])	14 (1.4 [0.7–2.1])	0.962
Nonfatal MI	104 (6.3 [5.1–7.5])	118 (8.3 [6.9–9.7])	88 (8.8 [7.0–10.5])	0.032
Unplanned revascularization	19 (1.2 [0.6–1.7])	19 (1.3 [0.7–1.9])	10 (1.0 [0.4–1.6])	0.739
Rehospitalization or prolongation of the hospitalization for recurrent MI	46 (2.8 [2.0–3.6])	47 (3.3 [2.4–4.2])	45 (4.5 [3.2–5.8])	0.063

MI indicates myocardial infarction.

Table 4

	Very Early (n=1648)	Early (n=1420)	Delayed (n=1003)	P Value
End point at 30 d, n (%)				
Primary safety (TIMI major+TIMI minor bleeding)	69 (4.2 [2.1–3.7])	46 (3.2 [1.1–2.5])	49 (4.9 [1.6–3.6])	0.116
TIMI major bleeding	45 (2.7 [1.9–3.5])	26 (1.8 [1.1–2.5])	25 (2.5 [1.5–3.5])	0.248
Non-CABG-related major	21 (1.3 [0.7–1.8])	8 (0.6 [0.2–1.0])	11 (1.1 [0.5–1.7])	0.126
CABG-related major	24 (1.5 [0.9–2.0])	18 (1.3 [0.7–1.8])	14 (1.4 [0.7–2.1])	0.902
TIMI minor	21 (1.3 [0.7–1.8])	21 (1.5 [0.9–2.1])	24 (2.4 [1.4–3.3])	0.075
Any clinically overt bleeding	180 (10.9 [9.4–12.4])	163 (11.5 [9.8–13.1])	168 (16.7 [14.4–19.1])	<0.001
TIMI requiring medical attention	82 (5.0 [3.9–6.0])	86 (6.1 [4.8–7.3])	96 (9.6 [7.8–11.4])	<0.001
TIMI minimal	37 (2.2 [1.5–3.0])	32 (2.3 [1.5–3.0])	42 (4.2 [2.9–5.4])	0.004

CABG indicates coronary artery bypass graft; and TIMI, Thrombolysis in Myocardial Infarction.

Figure 2

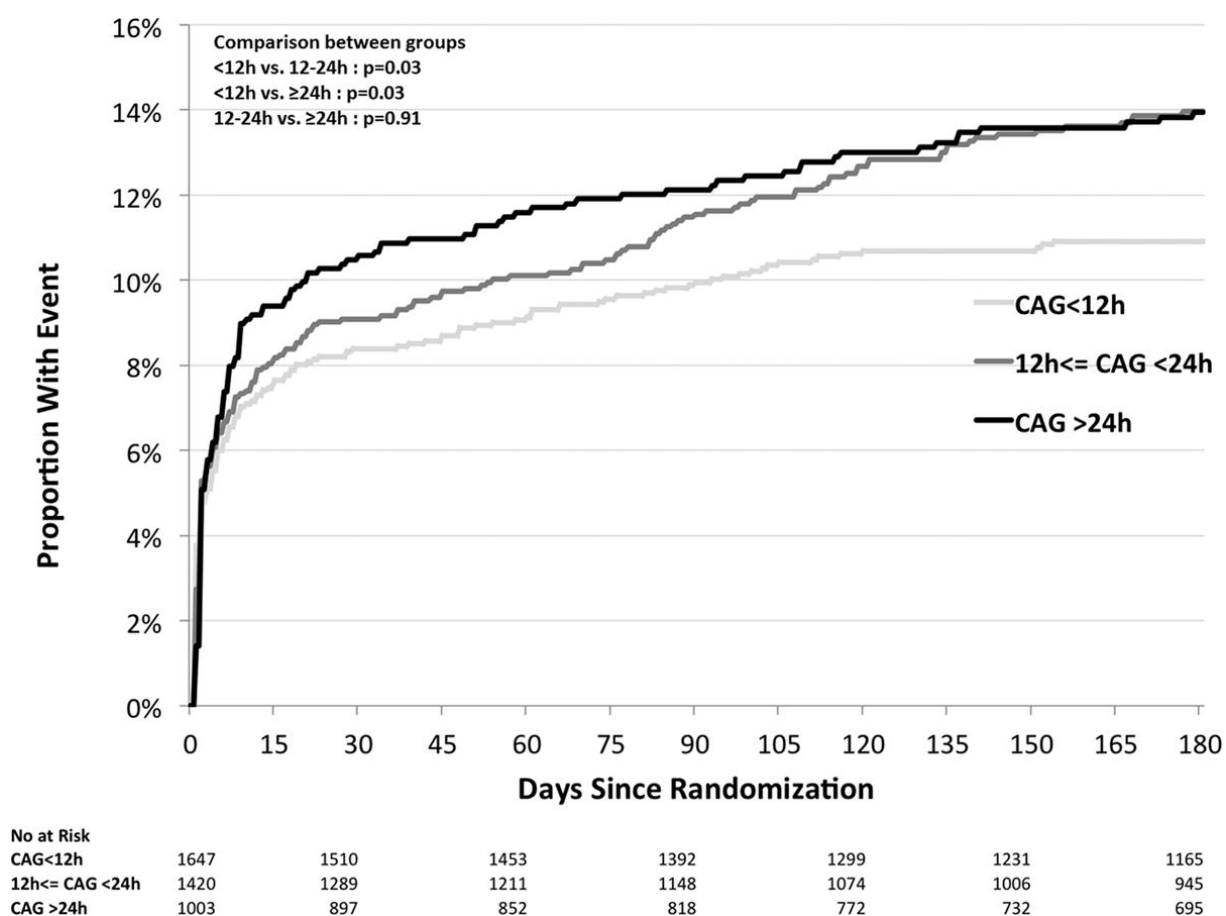


Figure 3

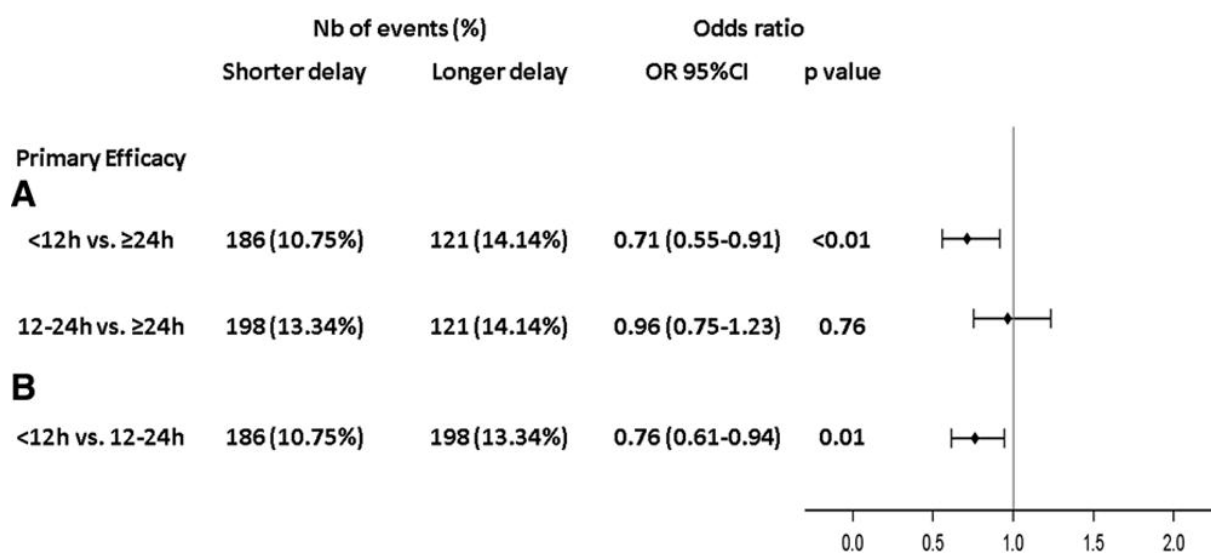


Figure 4

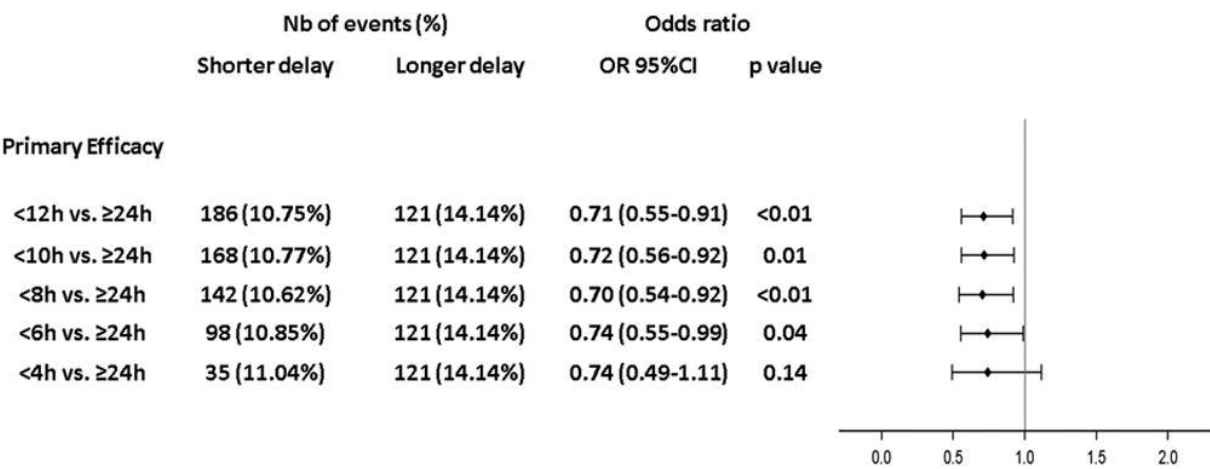


Figure 5

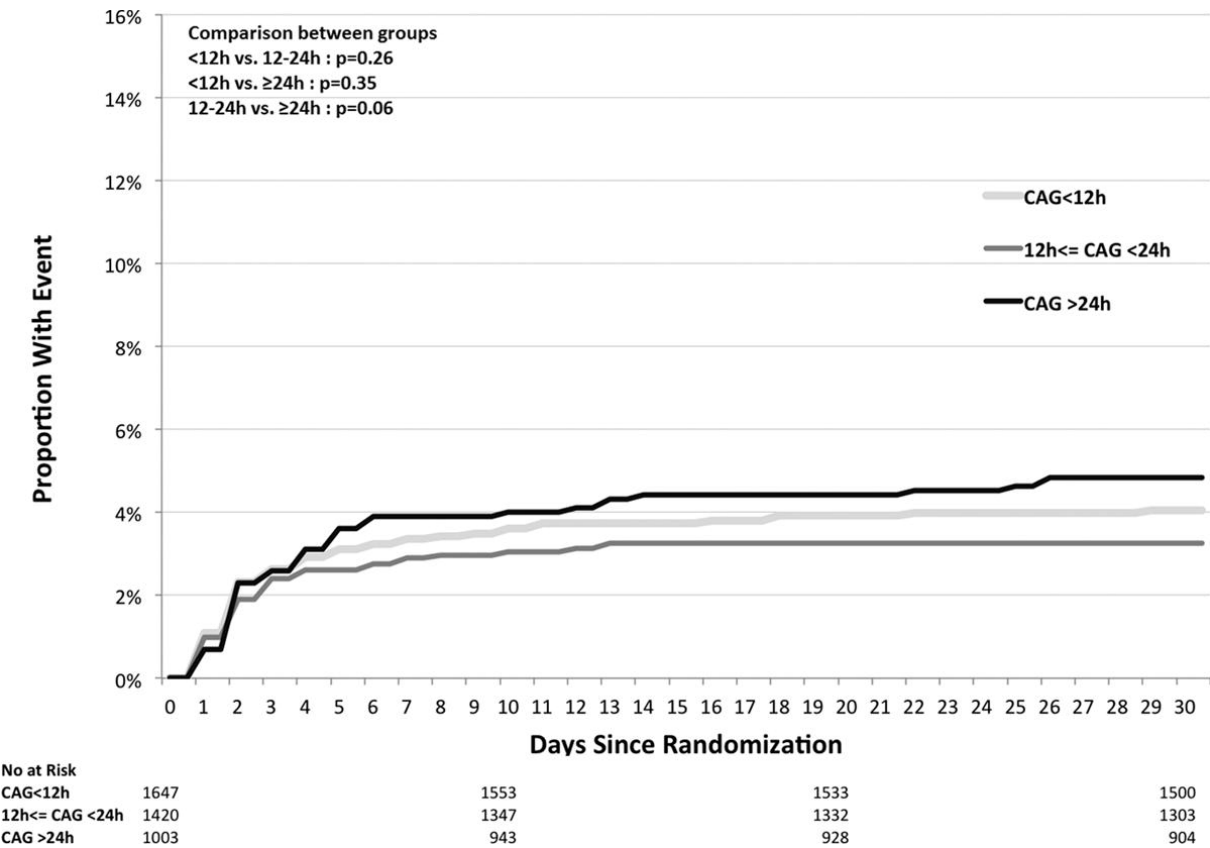


Figure 6

