



HAL
open science

A multiphase approach to the construction of pod-rom for flows induced by rotating solids

Antoine Falaize, Erwan Liberge, Aziz Hamdouni

► **To cite this version:**

Antoine Falaize, Erwan Liberge, Aziz Hamdouni. A multiphase approach to the construction of pod-rom for flows induced by rotating solids. Workshop CSMA Junior, Mar 2018, Gif-sur-Yvette, France. hal-01736872

HAL Id: hal-01736872

<https://hal.science/hal-01736872>

Submitted on 18 Mar 2018

HAL is a multi-disciplinary open access archive for the deposit and dissemination of scientific research documents, whether they are published or not. The documents may come from teaching and research institutions in France or abroad, or from public or private research centers.

L'archive ouverte pluridisciplinaire **HAL**, est destinée au dépôt et à la diffusion de documents scientifiques de niveau recherche, publiés ou non, émanant des établissements d'enseignement et de recherche français ou étrangers, des laboratoires publics ou privés.

INTRODUCTION

- **Objective:** Construct reduced order models (ROM) for the simulation of turbomachinery with *imposed rotation velocity* by proper orthogonal decomposition (POD).
- **Difficulty:** The POD yields a *spatial* basis from temporal correlations (here of the velocity).
- **Approach:**
 1. Extend the Navier-Stokes equations to the solid (rotor) domain by the multiphase approach. The body velocity is enforced via distributed Lagrange multipliers.
 2. Build a single POD basis for the multiphase velocity and project the governing equations.

REFERENCES

- [1] Glowinski, R., Pan, T. W., Hesla, T. I., & Joseph, D. D. (1999). A distributed Lagrange multiplier/fictitious domain method for particulate flows. *International Journal of Multiphase Flow*, 25(5), 755-794.
- [2] Liberge, E., & Hamdouni, A. (2010). Reduced order modelling method via proper orthogonal decomposition (POD) for flow around an oscillating cylinder. *Journal of fluids and structures*, 26(2), 292-311.
- [3] Mosquera, R., Hamdouni, A., El Hamidi, A., Allery, C. (2018). POD Basis Interpolation via Inverse Distance Weighting on Grassmann Manifolds. Manuscript submitted to AIMS Journals.

1. MULTIPHASE APPROACH

Level-set Signed distance to the fluid/solid interface $\Gamma_I(t)$:

$$\chi(\mathbf{x}, t) = \begin{cases} +d(\mathbf{x}, \Gamma_I(t)) & \text{if } \mathbf{x} \in \Omega_S(t) \cup \Gamma_I(t), \\ -d(\mathbf{x}, \Gamma_I(t)) & \text{if } \mathbf{x} \in \Omega_F(t) \end{cases}$$

Smoothed Heaviside (immersion depth ϵ)

$$h_\epsilon(\bullet) = \frac{1}{2} \left(1 + \tanh \left(\frac{\pi \bullet}{\epsilon} \right) \right).$$

Membership function for $\Omega_S(t)$

$$\mathbf{1}_{\Omega_S(t)}(\mathbf{x}) = h_\epsilon(\chi(\mathbf{x}, t)).$$

Multiphase quantities

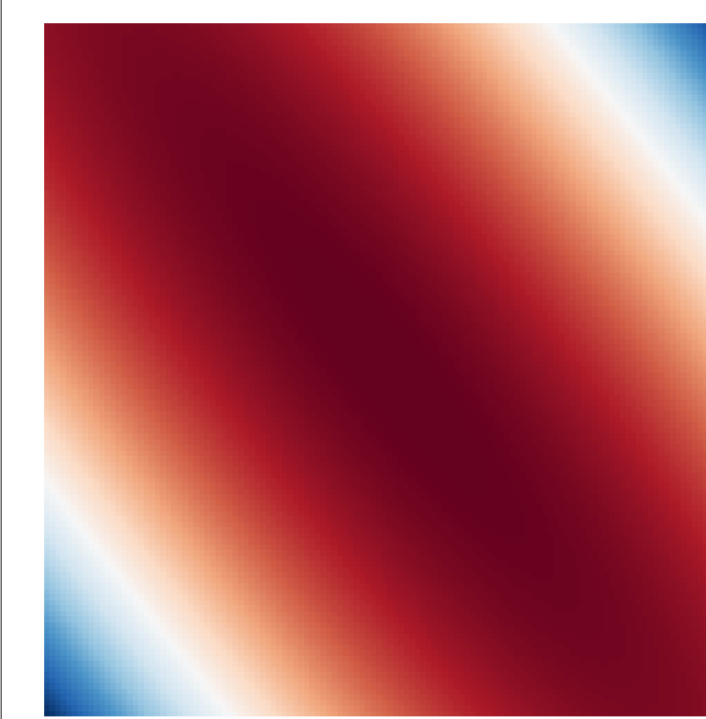
Velocity field over $\Omega = \Omega_S(t) \cup \Omega_F(t)$:

$$\mathbf{u}(\mathbf{x}, t) = \mathbf{1}_{\Omega_S(t)}(\mathbf{x}) \mathbf{u}_S(\mathbf{x}, t) + (\mathbf{I} - \mathbf{1}_{\Omega_S(t)}(\mathbf{x})) \mathbf{u}_F(\mathbf{x}, t).$$

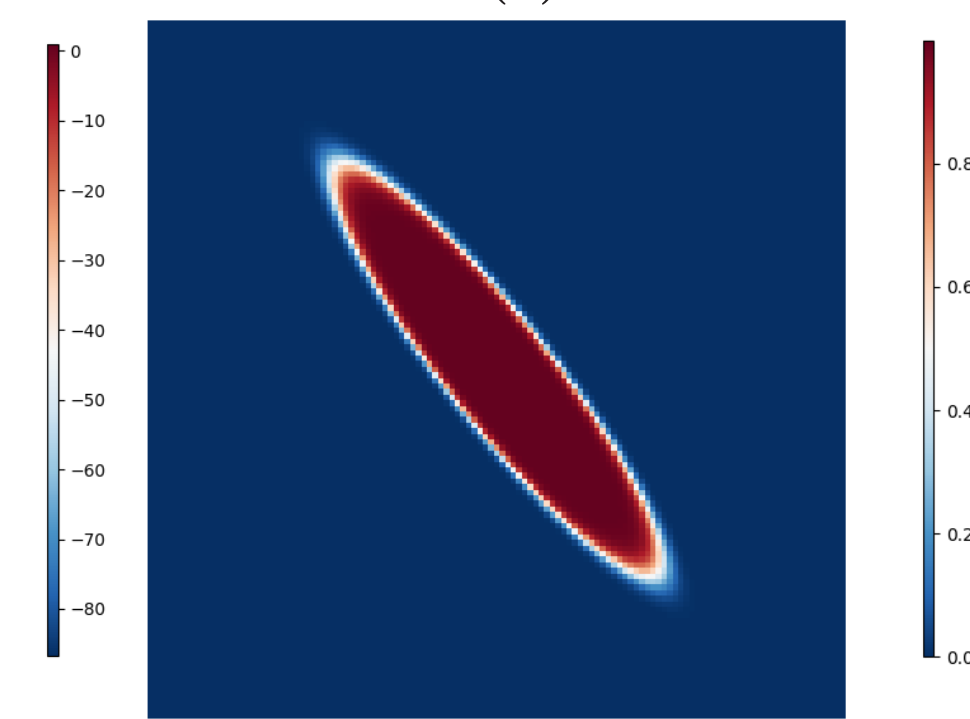
Material properties (density and viscosity):

$$\begin{aligned} \rho(\mathbf{x}, t) &= \mathbf{1}_{\Omega_S(t)}(\mathbf{x}) \rho_S + (\mathbf{I} - \mathbf{1}_{\Omega_S(t)}(\mathbf{x})) \rho_F \\ \nu(\mathbf{x}, t) &= \mathbf{1}_{\Omega_S(t)}(\mathbf{x}) \nu_S + (\mathbf{I} - \mathbf{1}_{\Omega_S(t)}(\mathbf{x})) \nu_F. \end{aligned}$$

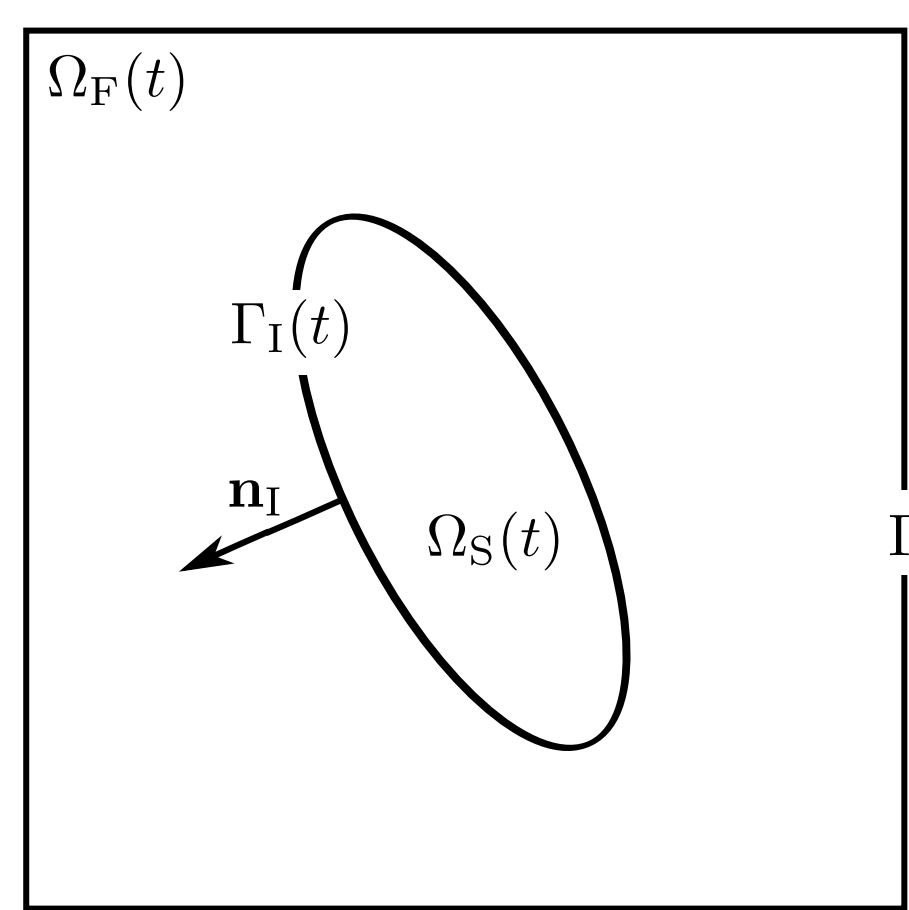
$\chi(\mathbf{x}, t)$



$\mathbf{1}_{\Omega_S(t)}(\mathbf{x})$



2. FULL ORDER MODEL [1]



Denoting \mathbf{u}_ω the rotation velocity, λ the Lagrange multiplier and μ the test function associated with the rotation constraint, the weak form of the coupled problem is

$$0 = \int_{\Omega} \rho \left(\frac{\partial \mathbf{u}}{\partial t} + \nabla \mathbf{u} \cdot \mathbf{u} \right) \cdot \mathbf{v} \, d\mathbf{x} - \int_{\Omega} \mathbf{f} \cdot \mathbf{v} \, d\mathbf{x} + \int_{\Omega} 2\nu \operatorname{Tr}(\mathbf{D}(\mathbf{u}) \cdot \mathbf{D}(\mathbf{v})) \, d\mathbf{x} - \int_{\Omega} p \nabla \cdot \mathbf{v} \, d\mathbf{x} + \int_{\Omega_S(t)} \lambda \cdot \mathbf{v} \, d\mathbf{x} + \int_{\Omega} q \nabla \cdot \mathbf{u} \, d\mathbf{x} + \int_{\Omega_S(t)} \mu \cdot (\mathbf{u} - \mathbf{u}_\omega) \, d\mathbf{x},$$

with an appropriate standard functional setting.

4. PROPOSED POD-ROM

⇒ **POD of the membership function**

POD basis $\Lambda = (\Lambda_i(\mathbf{x}))_{1 \leq i \leq N_\Lambda}$, $N_\Lambda \ll N_X$.

Decomposition

$$\mathbf{1}_{\Omega_S(t)}(\mathbf{x}) \simeq \sum_{i=1}^{N_\Lambda} \Lambda_i(\mathbf{x}) \gamma_i(t)$$

Periodicity

Coefficients $\gamma_i(t) \rightarrow \hat{\gamma}_i(\theta)$ determined *a priori*.

Insertion in the standard POD-ROM

$$\hat{\mathbf{A}}(t) \cdot \frac{d\alpha(t)}{dt} = \hat{\mathbf{B}}(t) \cdot \alpha(t) + \hat{\mathbf{C}}(t) : \alpha(t) \otimes \alpha(t) + \hat{\mathbf{F}}(t),$$

⇒ **Matrices evaluation at each timestep (cost $\sim N_\Lambda$).**

$$\hat{A}_{ij}(\theta) = \bar{a}_{i,j} + \sum_{k=1}^{N_\Lambda} \bar{a}_{i,j,k} \gamma_k(\theta),$$

$$\hat{B}_{ij}(\theta) = \bar{b}_{i,j} + \sum_{k=1}^{N_\Lambda} \bar{b}_{i,j,k} \gamma_k(\theta),$$

$$\hat{C}_{ijk}(\theta) = \bar{c}_{i,j,k} + \sum_{l=1}^{N_\Lambda} \bar{c}_{i,j,k,l} \gamma_l(\theta),$$

$$\hat{F}_i(\theta) = \bar{f}_i + \sum_{j=1}^{N_\Lambda} \bar{f}_{i,j} \gamma_j(\theta) + \lambda_i.$$

ACKNOWLEDGMENT

This work has been done in the context of the French National Research Agency Project HECO (ANR-15-CE08-0036).

3. STANDARD POD-ROM [2]

Mean field $\bar{\mathbf{u}}(\mathbf{x}) = \frac{1}{N_T} \sum_{n=1}^{N_T} \mathbf{u}(\mathbf{x}, t_n)$

Fluctuating filed $\tilde{\mathbf{u}}(\mathbf{x}, t) = \mathbf{u}(\mathbf{x}, t) - \bar{\mathbf{u}}(\mathbf{x})$

Data matrix $U_{mn} \equiv \tilde{\mathbf{u}}(\mathbf{x}_m, t_n)$

POD basis: left singular vectors of \mathbf{U}

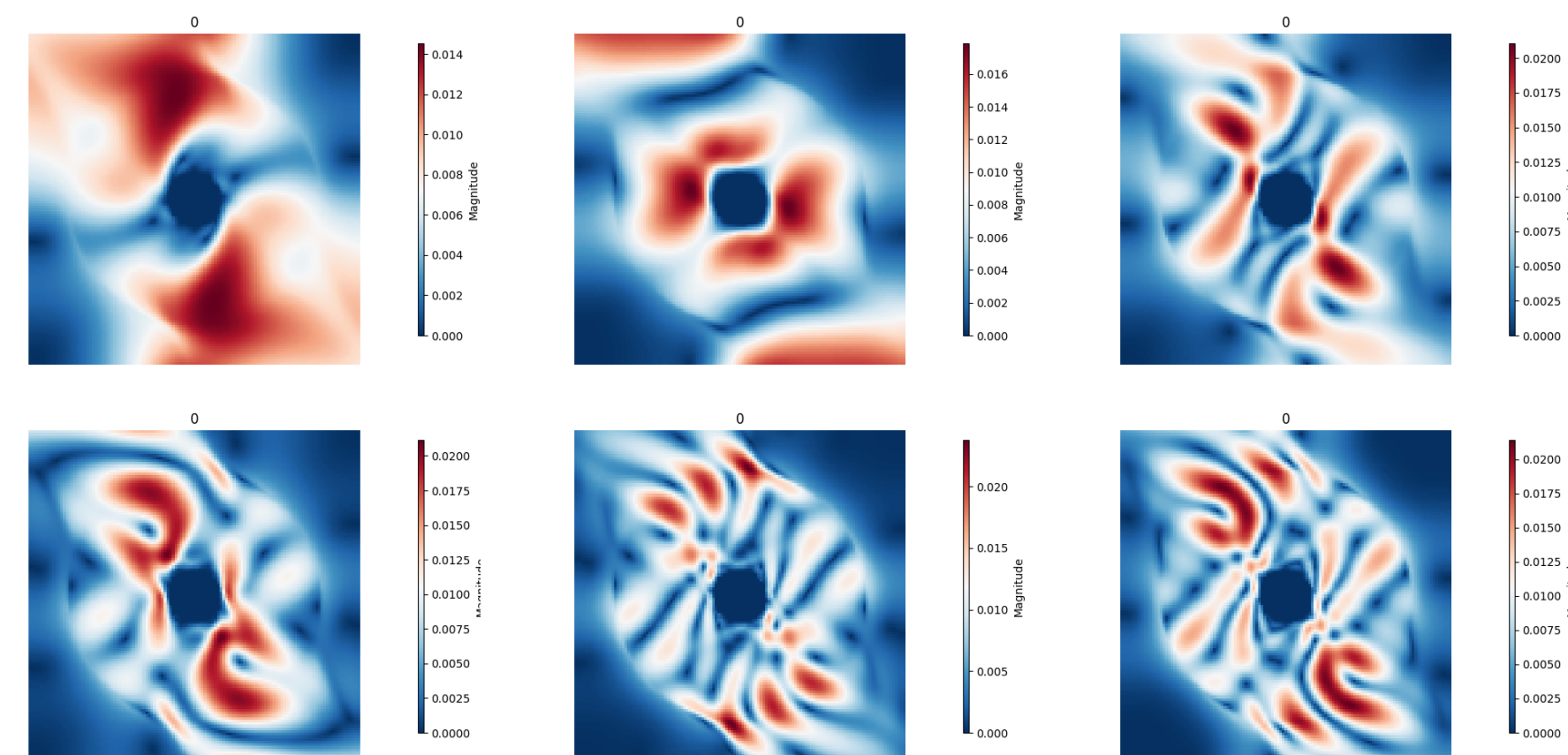
$$\Phi = (\phi_i(\mathbf{x}))_{1 \leq i \leq N_\Phi}, \quad N_\Phi \ll N_T \ll N_X$$

Decomposition

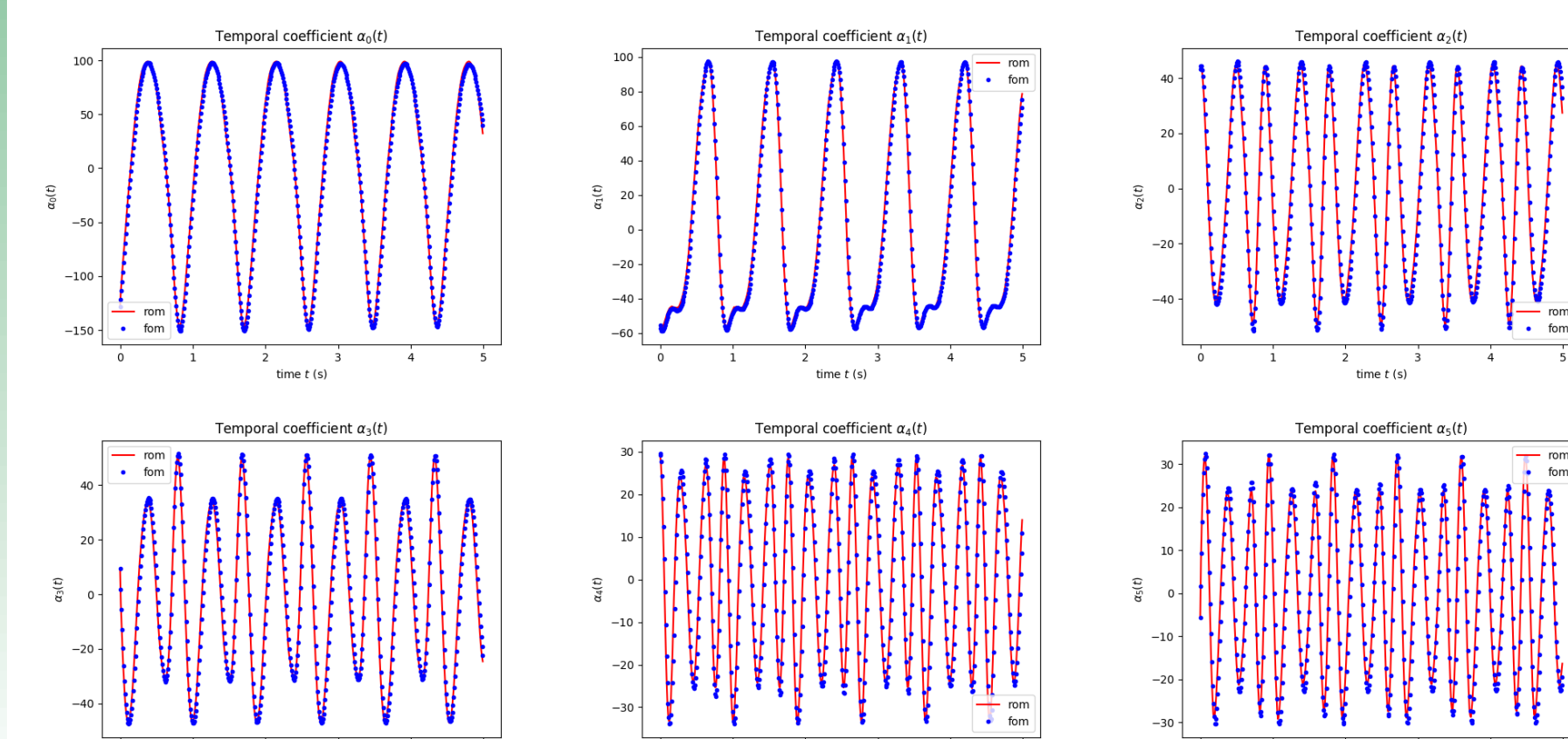
$$\mathbf{u}(\mathbf{x}, t) \simeq \bar{\mathbf{u}}(\mathbf{x}) + \sum_{i=1}^{N_\Phi} \phi_i(\mathbf{x}) \alpha_i(t)$$

5. RESULTS

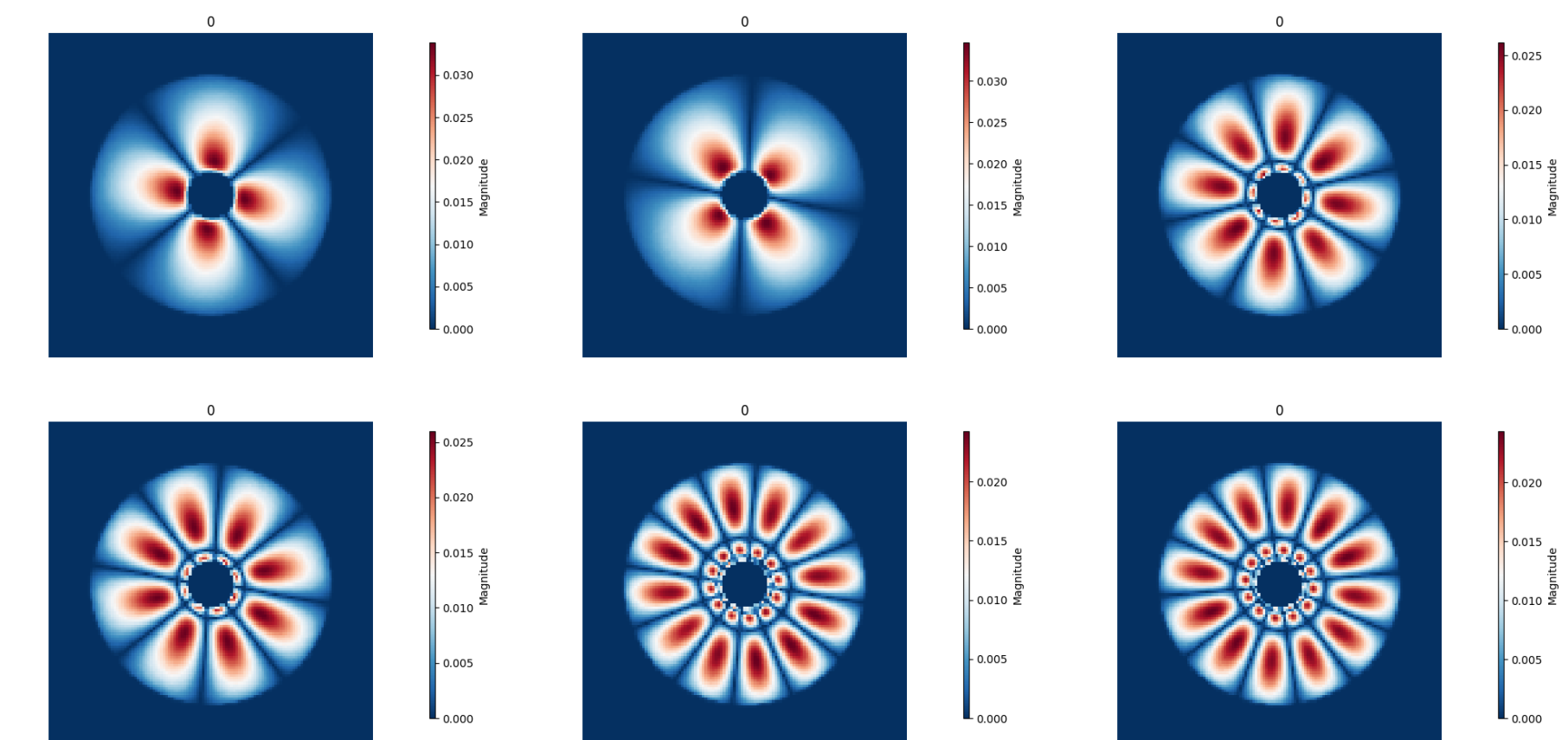
Φ : POD modes for the velocity



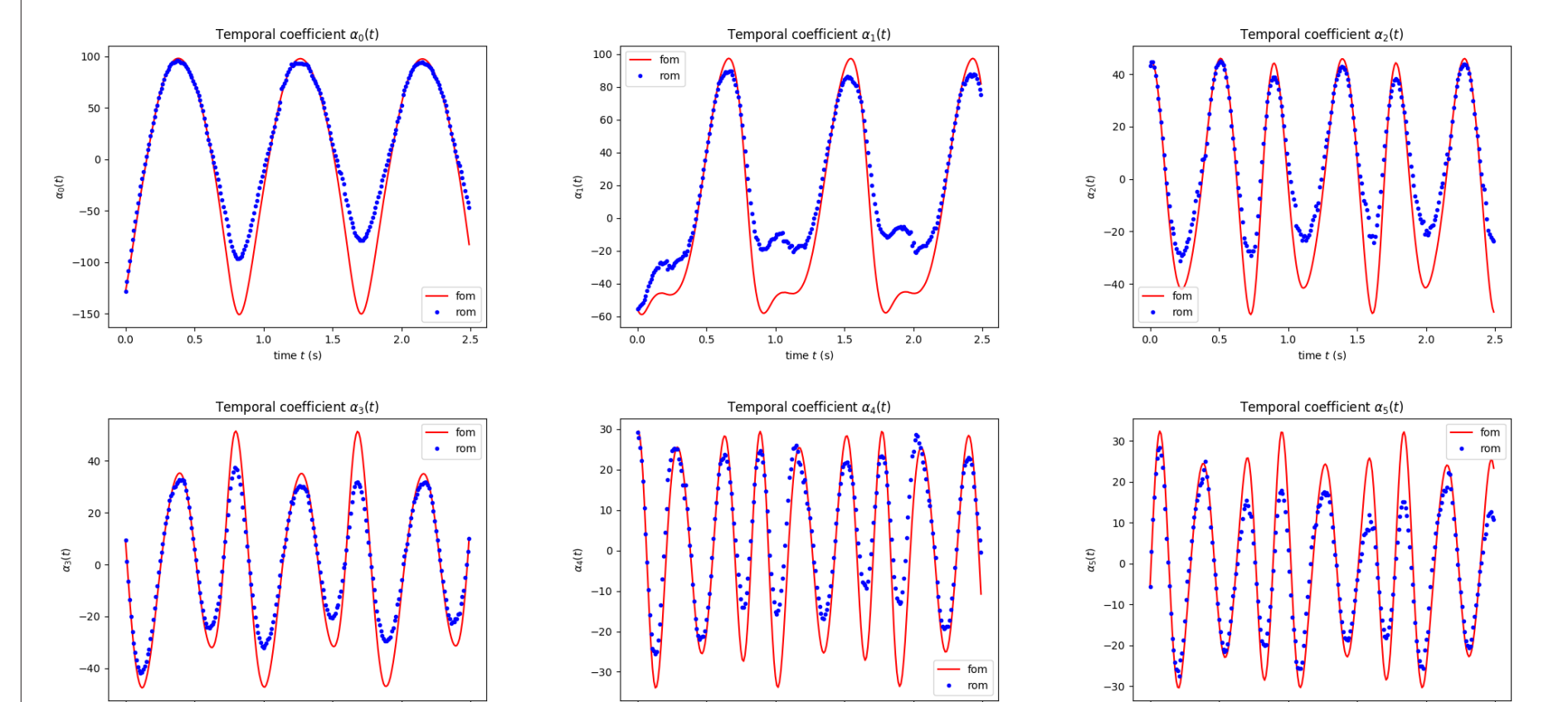
Coeff $\alpha_i(t)$: **full order** Vs. **standard POD-ROM**.



Λ : POD modes for the membership function



Coeff $\alpha_i(t)$: **full order** Vs. **proposed POD-ROM**.



CONCLUSION

Contributions

- Efficient reconstruction of the velocity in both the fluid and solid domains, while substantially reducing the computational cost.
- Very general: Any simulation code for the incompressible Navier-Stokes eq. can be used to generate the data $(\mathbf{u}(\mathbf{x}, t_n))_{1 \leq n \leq N_T}$.

Perspectives

- Cope with the reconstruction of the velocity in the solid domain at each iteration by rewriting the governing equations for a rotating subdomain.
- Interpolate between the POD-ROMs over the Grassmann manifold (see *e.g.* [3]).