



HAL
open science

Isolation, Identification, Prevalence, and Genetic Diversity of *Bacillus cereus* Group Bacteria From Different Foodstuffs in Tunisia

Maroua Gdoura, Mariam Siala, Mariem Zayani, Noel Grosset, Salma Smaoui, Feriele Messadi-Akrout, Florence Baron, Sophie Jan, Michel Gautier, Radhouane Gdoura

► To cite this version:

Maroua Gdoura, Mariam Siala, Mariem Zayani, Noel Grosset, Salma Smaoui, et al.. Isolation, Identification, Prevalence, and Genetic Diversity of *Bacillus cereus* Group Bacteria From Different Foodstuffs in Tunisia. *Frontiers in Microbiology*, 2018, 9 (447), pp.1-12. 10.3389/fmicb.2018.00447. hal-01731147

HAL Id: hal-01731147

<https://hal.science/hal-01731147>

Submitted on 13 Mar 2018

HAL is a multi-disciplinary open access archive for the deposit and dissemination of scientific research documents, whether they are published or not. The documents may come from teaching and research institutions in France or abroad, or from public or private research centers.

L'archive ouverte pluridisciplinaire **HAL**, est destinée au dépôt et à la diffusion de documents scientifiques de niveau recherche, publiés ou non, émanant des établissements d'enseignement et de recherche français ou étrangers, des laboratoires publics ou privés.



Distributed under a Creative Commons Attribution 4.0 International License



Isolation, Identification, Prevalence, and Genetic Diversity of *Bacillus cereus* Group Bacteria From Different Foodstuffs in Tunisia

Maroua Gdoura-Ben Amor^{1,2}, Mariam Siala^{1,3}, Mariem Zayani¹, Noël Grosset², Salma Smaoui^{4,5}, Feriele Messadi-Akrout^{4,5}, Florence Baron², Sophie Jan², Michel Gautier² and Radhouane Gdoura^{1*}

¹ Laboratory Research of Toxicology-Microbiology Environmental and Health, Sciences Faculty of Sfax, University of Sfax, Sfax, Tunisia, ² Equipe Microbiologie, Agrocampus Ouest, Institut National de la Recherche Agronomique, UMR1253 Science et Technologie du Lait et de l'œuf, Rennes, France, ³ Department of Biology, Preparatory Institute for Engineering Studies, University of Sfax, Sfax, Tunisia, ⁴ Regional Laboratory of Hygiene, Hedi Chaker University Hospital, Sfax, Tunisia, ⁵ Faculty of Pharmacy, University of Monastir, Monastir, Tunisia

OPEN ACCESS

Edited by:

Abd El-Latif Hesham,
Assiut University, Egypt

Reviewed by:

Jinshui Zheng,
Huazhong Agricultural University,
China

Beatrix Stessl,
Veterinärmedizinische Universität
Wien, Austria

*Correspondence:

Radhouane Gdoura
gdoura.radhouane@gmail.com

Specialty section:

This article was submitted to
Food Microbiology,
a section of the journal
Frontiers in Microbiology

Received: 07 November 2017

Accepted: 26 February 2018

Published: 12 March 2018

Citation:

Gdoura-Ben Amor M, Siala M, Zayani M, Grosset N, Smaoui S, Messadi-Akrout F, Baron F, Jan S, Gautier M and Gdoura R (2018) Isolation, Identification, Prevalence, and Genetic Diversity of *Bacillus cereus* Group Bacteria From Different Foodstuffs in Tunisia. *Front. Microbiol.* 9:447. doi: 10.3389/fmicb.2018.00447

Bacillus cereus group is widespread in nature and foods. Several members of this group are recognized as causing food spoilage and/or health issues. This study was designed to determine the prevalence and genetic diversity of the *B. cereus* group strains isolated in Tunisia from different foods (cereals, spices, cooked food, fresh-cut vegetables, raw and cooked poultry meats, seafood, canned, pastry, and dairy products). In total, 687 different samples were collected and searched for the presence of the *B. cereus* group after selective plating on MYP agar and enumeration of each sample. The typical pink-orange uniform colonies surrounded by a zone of precipitate were assumed to belong to the *B. cereus* group. One typical colony from each sample was subcultured and preserved as cryoculture. Overall, 191 (27.8%) food samples were found positive, giving rise to a collection of 191 *B. cereus*-like isolates. The concentration of *B. cereus*-like bacteria were below 10³ cfu/g or ml in 77.5% of the tested samples. Higher counts (> 10⁴ cfu/g or ml) were found in 6.8% of samples including fresh-cut vegetables, cooked foods, cereals, and pastry products. To verify whether *B. cereus*-like isolates belonged to the *B. cereus* group, a PCR test targeting the *sspE* gene sequence specific of the group was carried out. Therefore, 174 isolates were found to be positive. Food samples were contaminated as follows: cereals (67.6%), pastry products (46.2%), cooked food (40.8%), cooked poultry meat (32.7%), seafood products (32.3%), spices (28.8%), canned products (16.7%), raw poultry meat (9.4%), fresh-cut vegetables (5.0%), and dairy products (4.8%). The 174 *B. cereus* isolates were characterized by partial sequencing of the *panC* gene, using a Sym'Previous software tool to assign them to different phylogenetic groups. Strains were distributed as follows: 61.3, 29.5, 7.5, and 1.7% in the group III, IV, II, and V, respectively. The genetic diversity was further assessed by ERIC-PCR and PFGE typing

methods. PFGE and ERIC-PCR patterns analysis allowed discriminating 143 and 99 different profiles, respectively. These findings, associated to a relatively higher prevalence of *B. cereus* group in different foods, could be a significant etiological agent of food in Tunisia.

Keywords: *B. cereus* group, prevalence, phylogenetic groups, ERIC-PCR, PFGE

INTRODUCTION

Food safety represents a serious public health concern. Consumption of food contaminated with pathogens and microbial by-products such as toxins could result in serious diseases. (Havelaar et al., 2012; Tewari and Abdullah, 2015; Van Cauteren et al., 2017). The contamination of foods with *Bacillus cereus* group bacteria may lead to food poisoning that usually occurs under two types of syndromes, the emetic, and/or the diarrheal syndromes (Granum, 1994). The later results from the production of several enterotoxins: Hemolysin BL (HBL), encoded by *hblA*, *hblB*, *hblC*, and *hblD*, Non-haemolytic enterotoxin (NHE) encoded by *nheA*, *nheB*, and *nheC*, and Cytotoxin K (CytK) encoded by *cytK*, whereas the emetic syndrome is due to a small molecular weight toxin, the cereulid, encoded by *ces*. *B. cereus* group named also *B. cereus sensu lato* includes eight closely related species: *B. anthracis*, *B. cereus sensu stricto*, *B. cytotoxicus*, *B. mycoides*, *B. pseudomycoides*, *B. thuringiensis*, *B. toyonensis*, and *B. weihenstephanensis* (Drobniewski, 1993; Guinebretière et al., 2013; Jiménez et al., 2013; Pfrunder et al., 2016). However, the most members recognized as pathogenic bacteria among *B. cereus* group were *B. cereus sensu stricto* an opportunistic pathogen associated with food poisoning and occasionally soft tissue infections in humans, *B. anthracis* the etiological agent of anthrax in ungulates and humans, *B. thuringiensis* an entomopathogen widely used as a biopesticide and *B. cytotoxicus*, a thermotolerant pathogen occasionally associated with food poisoning.

Furthermore, the level of sanitary risk was appeared to be dependent on the assignment of the strain to one of the seven phylogenetic groups proposed by Guinebretière et al. (2008, 2010). Based on growth temperature ranges and partial encoding pantoate-beta-alanine ligase C (*panC*) gene sequences, this affiliation allows ascribed a sanitary risk level to each phylogenetic group. Namely, the group III presents the highest risk, whereas, the lower and very lower risk was ascribed to the group V and VI, respectively. A moderate risk was associated to groups VII, IV, and II. In addition to its pathogenicity, *B. cereus sensu lato* is also known as leading to food spoilage issues (Lücking et al., 2013), due to the action of various hydrolytic enzymes even at refrigerated temperatures when psychrotolerant strains are involved (Andersson et al., 1995). *B. cereus sensu lato* are common food contaminants able to grow in a wide range of water activities, temperatures, and pH (Kramer and Gilbert, 1989). The occurrence of *B. cereus sensu lato* within the food chain may be ascribed to the use of contaminated raw materials. Moreover, technological processes such as heat treatments favor the selection of *B. cereus sensu lato* due to the endospore-forming ability of these bacteria. Furthermore, their

ability to adhere on industrial surfaces and subsequently develop in the form of biofilms increase the risk of food contamination if inadequate cleaning procedures are implemented (Andersson et al., 1995). The *B. cereus* group bacteria affiliated to the psychrotrophic phylogenetic groups II and VI are also able to grow at temperatures below 7°C and can be of concern in pasteurized foods stored at chilled temperatures (Guinebretière et al., 2008; Jan et al., 2011).

Various selective solid media such as MYP (mannitol-egg yolk-phenol red-polymyxin-agar) and PEMBA (polymyxin-pyruvate-egg yolk-mannitol-bromthymol blue-agar) were used for the isolation and detection of *B. cereus* from food. The selectivity of these media is based on the hydrolysis of egg yolk lecithin and the absence of the use of mannitol by *B. cereus* besides the presence of selective compound like polymyxin (Hendriksen and Hansen, 2011).

Several molecular typing methods that rely on DNA sequence differences have been used to reveal the genetic relationship of *B. cereus* group strains (Valjevac et al., 2005; Merzougui et al., 2013a; Hill et al., 2015). Enterobacterial repetitive intergenic consensus-PCR (ERIC-PCR) was used to screen for genetic relatedness. On the other hand, the application of pulsed-field gel electrophoresis (PFGE) has been proved to be useful for the discrimination and epidemiological characterization of *B. cereus* group strains.

In Tunisia, no study has been conducted for the genotypic characterization of *B. cereus* group isolates in terms of foodborne poisoning concerns. Thus, the aim of this work was (i) to investigate the incidence and level of contamination with members of the *B. cereus* group from different kinds of foodstuffs collected in Tunisia; (ii) to assign each isolate to a phylogenetic group in order to evaluate the food safety risk level; (iii) to study the diversity of these isolates by exploring their genetic relationship through ERIC-PCR and PFGE typing methods.

MATERIALS AND METHODS

Collection of Food Samples

A total of 687 food samples were randomly collected from supermarkets, hotels, restaurants and private companies during the period from April 2014 to 2015. These samples represented the following products: cereal products ($n = 103$), spices ($n = 59$), pastry products ($n = 80$), cooked food ($n = 103$), canned products ($n = 93$), seafood products ($n = 34$), dairy products ($n = 84$), fresh-cut vegetables ($n = 99$), raw poultry meat ($n = 85$), and cooked poultry meat ($n = 55$). The cereals products are composed of wheat and barley flour, semolina, pasta, and couscous. The spices samples included paprika, cumin, black pepper, coriander, and curcuma. The pastry products included

cakes, chocolate croissant, and ice cream. The cooked food included samples of soup, cooked pasta, omelet, minced meat sauce, grilled pepper sauce, and fries. The canned products are composed of tuna, juice, and harissa. The seafood products included fishes (sea bream and wolf fish) and clams. The dairy products are composed of milk, butter and cheese. The fresh-cut vegetables included salads composed of raw mixed vegetables and vegetables such as onion, parsley, basil, and coriander. The poultry set included samples of chicken and turkey meat, poultry legs, and wings. The cooked poultry meat samples were composed of roast and grilled chicken (meat and sausages). The different food samples were transported under complete aseptic conditions in a cool transport container to the laboratory of hygiene of Sfax (Southeast of Tunisia). The samples were analyzed within 24 h of collection.

Culture Conditions for Isolation of *B. Cereus* Group Bacteria

Ten grams of each food sample was homogenized for 1 min with 90 ml of buffered peptone water (VWR, Strasbourg, France) containing 5 g/l of lithium chloride (Prolabo, Fontenay sur bois, France) in a BagMixer stomacher (AES Laboratory, Combourg, France). Serial dilutions were prepared, and 0.1 ml of each diluted sample was streaked in MYP agar medium (Oxoid, Basingstoke, England). Plates were incubated for 24 h at 30°C. Typical colonies are pink-orange and uniform and they are surrounded by a zone of precipitation indicating lecithinase production. These colonies were presumptively identified to be *B. cereus* and enumerated with colony counter. Furthermore, from each sample, a typical colony presumed to belong to the *B. cereus* group was subcultured on BHI-YE agar (Fisher Bioblock, Illkirch, France) and incubated for 24 h at 30°C. Then, each colony was transferred into cryotubes filled with TSB broth (AES Laboratory, Combourg, France) and further incubated for 24 h at 30°C. The cultures were frozen at -80°C after addition of glycerol (Sigma Aldrich, Saint Quentin Fallavier, France), at a final concentration of 25%.

Identification of *B. Cereus* Group by PCR

B. cereus-like isolates were grown overnight at 30°C on brain heart infusion-yeast extract (BHI-YE) (Fisher Bioblock, Illkirch, France). Genomic DNA was extracted using the Chelex extraction method as previously described (Walsh et al., 1991). Furthermore, a PCR test targeting spore structural protein gene (*sspE*) sequence specific to the *B. cereus* group (Kim et al., 2005) was carried out. This chromosomal gene sequence of a 71 bp was searched using the following primers: (5'-GAAAAAGATGAGTAAAAACAACAA-3') as forward degenerated primer and (5'-CATTTGTGCTTTGAATGCTAG-3') as reverse primer (Sigma Aldrich). The amplification reactions were carried out in a PCR thermocycler (iCycler optical module 584BR, Bio-Rad, Marnes-la-Coquette, France) as follows: 4 min at 95°C, 30 cycles of 30 s at 95°C, 30 s at 59°C, and 1 min at 72°C, followed by a final extension step at 72°C for 7 min.

PanC Gene Sequence Analysis

A PCR product of a 651 bp sequence present in the *panC* gene was searched using the following primers: (5'-TYGGTTTTGTYYCCAACRATGG-3') as forward degenerated primer and (5'-CATAATCTACAGTGCCTTTTCG-3') as reverse primer. Thermal cycling was carried out in iCycler optical module 584BR (Bio-Rad) with the following run: a starting cycle of 5 min at 94°C, followed by 30 cycles of 15 s at 94°C, 30 s at 55°C, and 30 s at 72°C, and a final extension of 7 min at 72°C. Purification and sequencing of PCR products were performed by GATC Biotech AG (Biotechnology, Konstanz, Germany) using the following primer: 5'-ATAATCTACAGTGCCTTTTCG-3' (Guinebretière et al., 2008). The online algorithm (<https://www.tools.symprevious.org/Bcereus/>) was then used for assigning each *B. cereus* group isolate to one phylogenetic group (Guinebretière et al., 2010).

Pulsed-Field Gel Electrophoresis

The PFGE protocol was adapted and optimized from previous work (Merzougui et al., 2013b). Cells were grown in 5 ml BHI-YE (Fisher Bioblock) until an optical density of 0.3 at 650 nm. Bacterial suspensions were then centrifuged for at 5700 g 10 min at 4°C, and the pellet was washed in TES buffer (10 mM Tris, 1 mM EDTA, 0.5 M sucrose, pH 8) and resuspended in 400 µl TE buffer (10 mM Tris, 1 mM EDTA, pH 8) containing 10 mg/ml lysozyme (Sigma-Aldrich) before incubation at 37°C for 1 h. Four hundred microliters of lysed cells were then added to 700 µl agarose (1% in 125 mM EDTA) and the mixture was maintained liquid by incubation at 55°C. Aliquots of 100 µl of the agarose-cell mixtures were quickly deposited into well molds in order to make blocks. The blocks were deproteinized 2 h at 55°C with 20 mg/ml proteinase K in the following buffer: 10 mM Tris, 100 mM EDTA, 10% SDS, pH 8. The proteinase K was then inactivated by washing in water and TE buffer for two to three times of 10 min respectively. To perform enzymatic digestion, blocks were dialyzed in 600 µl enzyme restriction buffer for 1 h at 4°C and then incubated in 300 µl *SmaI* solution (New England Biolabs, Hitchin, UK) (20 U in its buffer) at 25°C during 4 h. The sectioned agarose blocks were then loaded into the wells of an ultra-pure agarose gel (Gibco BRL, Paisley, Ecosse) (1.5% m/v in 0.5 X TBE buffer), and subjected to transverse alternative field electrophoresis in a CHEF-DR[®] II apparatus (Biorad, Hercules CA, USA), using the following parameters: 200 V, 2 s of initial switch time, 20 s of final switch time, and 18–24 h of migration at 14°C. Three deposits of lambda ladder PFGE marker (lambda DNA cI857 ind 1 Sam7, GelSyringe[™], New England Biolabs, UK) were included on each gel. Following electrophoresis, the gel was stained with 1 µg/ml ethidium bromide, washed with deionized water, and visualized with an UV transilluminator (Bioblock, Illkirch, France).

ERIC-PCR

For ERIC-PCR, the primer 5'-ATGTAAGCTCCTGGGGATTCAC-3' (Versalovic et al., 1991) was used. The PCR was performed in a 50 µl solution containing 1 µM of primer, 5 µl of 10X PCR buffer, 0.25 mM dNTPs, 3 mM MgCl₂, and 30 U/ml of Taq polymerase (Biolabs). The amplification reaction

was performed as follows: one cycle at 95°C for 10 min followed by 4 cycles of 5 min at 94°C, 5 min at 40°C, and 5 min at 72°C and then followed by 40 cycles of 1 min at 94°C, 1 min at 55°C, and 2 min at 72°C, and the last extension at 72°C for 10 min. A 10 µl aliquot of each amplification reaction was analyzed using electrophoresis on agarose gel (2% m/v in 1X TBE buffer) containing 1 µg/ml ethidium bromide and run in a 1X TBE buffer for 2 h at 80 V. PCR results are visualized with an UV transilluminator (Bioblock). A 1000 bp Smart DNA Ladder (Eurogentec, France) was included on the gel as marker.

Data Analysis

The PFGE and ERIC-PCR patterns were analyzed by the Bionumerics software version 6.5 (Applied Maths, Ghent, Belgium). The relationship between two given strains was scored by the Dice coefficient of similarity with an optimization of 1%, and strains were clustered by hierarchically clustering interstrain similarities based on the Unweighted Pair Group Method with Arithmetic Averages (UPMGA) clustering algorithm.

The genetic similarity between markers included on each gel was 80%. Consequently, a genetic similarity of 80% was used between isolates, which were clustered according to this similarity criterion. Therefore, we considered that two isolates presenting more than 80% similarity were the same.

RESULTS

Prevalence of *B. Cereus* Group Bacteria in Food Samples

A collection of 687 Tunisian food samples was screened for the prevalence of *B. cereus* group bacteria (Table 1). Overall, 191 food samples (27.8%) yielded *B. cereus*-like colonies on MYP agar, giving rise to a collection of 191 *B. cereus*-like isolates. The prevalence and contamination levels of presumptive *B. cereus* group bacteria are shown in Table 1. The bacterial concentrations were below 10³ cfu/g or ml in most of the food samples studied (77.5%). In 15.7% of tested samples, the *B. cereus* loads were between 10³ and 10⁴ cfu/g or ml, while in 6.8% of samples, the amounts exceed 10⁴ cfu/g or ml. These highest counts (above 10⁴ cfu/g or ml) were found in 20% of fresh-cut vegetables, 11.1% of cooked foods, 10.7% of cereal products and 9.7% of pastry products (Table 1). A PCR test targeting the spore structural protein gene (*sspE*) sequence, specific to the *B. cereus* group, was carried out in order to verify the belonging of each isolate to the *B. cereus* group. Therefore, 174 isolates (91.1%) were found to be positive by using this PCR test. Our molecular results showed that the recorded prevalence of *B. cereus* strains in the foodstuffs tested ranged from the highest rate of 67.7% in cereal products to the lowest of 4.8% in dairy products.

Genetic Typing of *B. Cereus* Group Strains Isolated From Food Samples

We used the genetic typing of *B. cereus* strains isolated from food samples based on PCR amplification and partial sequence analysis of the *panC* gene to attribute each isolate to one of the seven genetic groups defined by Guinebretière et al. (2008). As shown in Table 2, 106 isolates (60.9%), 51 isolates (29.3%),

13 isolates (7.5%), and 4 isolates (2.3%) were assigned to the phylogenetic groups III, IV, II, and V, respectively. None of the isolates was found to be affiliated to the groups VI and VII. The group III was the most frequent phylogenetic group in our collection; accounting for 60.9% of the collection. Most isolates belonging to the group III originated from cooked samples (cooked food, pastry products, and cooked poultry products).

PFGE Typing Analysis

The PFGE fingerprinting method was successful in separating the *B. cereus* group isolates coming from different foods. A remarkable polymorphism was observed inside the collection when a genetic similarity of 80% was used (Figure 1). PFGE banding patterns of *Sma*I-digested genomic DNA from 174 *B. cereus* group isolates highlighted that 58 isolates were grouped into 27 different clusters (PF1 to PF27 in Table 3), while the remaining 116 isolates were each clustered separately and considered to be genetically unrelated (Figure 1). This diversity was particularly important when the sample types varied and also within the same sample type. Among the 27 clusters obtained, 12 clusters (PF2, PF4, PF7 to PF9, PF13, PF18, PF19, PF22 to PF24, and PF26) were each associated with a specific sample type and a definite phylogenetic group. Conversely, for the 15 remaining clusters, the isolates of each cluster were not classified together based on the type of sample and/or the phylogenetic group.

ERIC-PCR Typing Analysis

Using 80% similarity criteria, 61 isolates were unclustered while the remaining 113 isolates were grouped into 38 clusters (Figure 2). In this case, the isolates distribution in clusters was done independently of the sampling origin and the phylogenetic group of strains. The genetic relationships of isolates and different clusters obtained from the ERIC-PCR and PFGE typing methods are summarized in Table 3. The present study reveals that *B. cereus* isolates belonging to clusters (ER6-PF24; ER13-PF18; ER26-PF27 and ER34- PF13) showed concordant typing results in ERIC-PCR and in PFGE. A diverging typing results were obtained for the remaining isolates. As shown in Table 3 the majority of clusters with identical ERIC profiles displayed at least one strain exhibited a different PFGE profile [ER2(1)-PF16; ER12-PF2; ER14-PF17; ER16-PF8; ER18-PF19; ER27-PF22; ER9-PF 23; ER36-PF26; ER1; ER7; ER8; ER10; ER11; ER15; ER35; ER37; ER38; ER3 to ER5, ER19 to ER25, and ER28 to ER33). Conversely, some strains with different ERIC profiles presented identical PFGE profile (PF1, PF3 to PF7, PF9 to PF12, PF14 to PF15, and PF20).

DISCUSSION

B. cereus sensu lato, a widespread pathogen, can be found in different types of foodstuffs. According to the (Public Health England, 2009), the allowable level of *B. cereus* group bacteria in food is below 10³ cfu/g or ml. However, doses as low as 10³ *B. cereus* cfu/g or ml of food sample may be sufficient to cause food poisoning (Gilbert and Kramer, 1986; Stenfors Arnesen et al., 2008). In fact, it is important to note that food products may be easily contaminated due to handling and storage conditions

TABLE 1 | Prevalence of *Bacillus cereus* group bacteria in food samples collected in Tunisia during the period from April 2014 to 2015.

Food sample (Total no. of samples)	No. (%) of contaminated samples with <i>B. cereus</i> group-like bacteria within the range			Total no. (%) of samples contaminated with <i>B. cereus</i> -group-like bacteria	
	<10 ³ cfu/g or ml	[10 ³ -10 ⁴ cfu/g or ml]	≥10 ⁴ cfu/g or ml	Conventional culture	PCR test
Cooked food (103)	33 (73.3)	7 (15.6)	5 (11.1)	45 (43.7)	42 (40.8)
Fresh-cut vegetables (99)	4 (80.0)	0 (0.0)	1 (20.0)	5 (5.0)	5 (5.0)
Pastry products (80)	33 (80.4)	4 (9.7)	4 (9.7)	41 (51.3)	37 (46.3)
Dairy products (84)	5 (100)	0 (0.0)	0 (0.0)	5 (5.9)	4 (4.8)
Spices (59)	17 (89.5)	2 (10.5)	0 (0.0)	19 (32.2)	17 (28.9)
Canned products (54)	10 (100)	0 (0.0)	0 (0.0)	10 (18.5)	9 (16.7)
Cereal products (34)	16 (57.2)	9 (32.1)	3 (10.7)	28 (82.4)	23 (67.7)
Raw poultry meat (85)	6 (75)	2 (25)	0 (0.0)	8 (9.4)	8 (9.4)
Cooked poultry meat (55)	15 (83.3)	3 (16.7)	0 (0.0)	18 (32.7)	18 (32.7)
Seafood products (34)	9 (75)	3 (25)	0 (0.0)	12 (35.3)	11 (32.4)
Total (687)	148 (77.5)	30 (15.7)	13 (6.8)	191 (27.8)	174 (25.3)

TABLE 2 | Distribution of *B. cereus* group isolates coming from tunisian food samples according to the phylogenetic group classification defined by Guinebretière et al. (2008).

Food sample	Number of <i>B. cereus</i> group isolates	Phylogenetic group			
		II	III	IV	V
Cooked food	42	4	28	9	1
Fresh-cut vegetables	5	1	2	2	0
Pastry products	37	1	20	16	0
Dairy products	4	0	4	0	0
Spices	17	2	6	9	0
Canned products	9	0	8	1	0
Cereal products	23	3	11	8	1
Raw poultry meat	8	2	6	0	0
Cooked poultry meat	18	0	12	6	0
Seafood products	11	0	9	0	2
Total	174	13	106	51	4

or to inefficient cleaning and sanitation of the equipment. Thus, the bacterial load may rapidly rise and reach the dangerous level (up to 10⁴ cfu/g or ml). This later differs depending on the standard guidelines: the amount of *B. cereus* is considered unsafe for consumption with only >10⁵ cfu/g or ml in UK's guidelines (Public Health England, 2009) and ≥ 10⁴ cfu/g or ml in Food Standards Australia New Zealand (Food Standards Australia New Zealand, 2001). Our study shows that *B. cereus*-like bacteria were isolated from many different food samples. In 77.5% of the tested samples, the loads were below 10³ cfu/g or ml (the UK's permitted level, Public Health England, 2009), whereas, in only 6.8% of the samples, the counts were above 10⁴ cfu/g or ml (the Australia New Zealand's hazardous level, Food Standards Australia New Zealand, 2001). The high counts found in fresh-cut vegetables, cooked food, and pastry products were similar to those reported by Rosenquist et al. (2005) in fresh cucumbers and tomatoes, heat-treated products, cake custard, and desserts. The high contamination level of processed foods may result from

contamination of raw materials and the subsequent resistance of spores to thermal or other manufacturing processes. Slow cooling and extended storage at room temperature allow the spores to germinate and re-grow (Borch and Arinder, 2002; Ankolekar et al., 2009). Biofilms of *B. cereus* group bacteria present on the surface of the pipelines and other processing materials such as storage tanks can be a source of contamination of the food being processed (Faille et al., 2014).

The amounts of *B. cereus* group bacteria in cereal products are in accordance with the contamination level reported by Lee et al. (2009) which ranged from 30 to more than 2.4 10³ MPN/g. The presence of *B. cereus* group bacteria in cereal products could be ascribed to the abilities of these microorganisms to survive under high temperature and dried conditions (Claus and Berkeley, 1986) as well as to the packaging process of this type of food (Väisänen et al., 1991). The contamination of seafood products was similar to that was reported by Rahmati and Labbe (2008), i.e., a contamination level ranging from 36 cfu/g to 1.1 10³ cfu/g. All canned and dairy product samples contaminated with *B. cereus*-like bacteria were considered as satisfactory (counts below 10³ cfu/g or ml). However, a study conducted in India reported much higher *B. cereus* counts, i.e., above 10⁵ cfu/g in 10% of milk product samples (Bedi et al., 2005). Our data show that the contamination level were below 10³ cfu/g for most spice samples analyzed (89.5%). Only two samples (10.5%) had counts ranging from 10³ cfu/g to 10⁴ cfu/g. Similar counts have been reported in a Turkish study on spices (Aksu et al., 2000). However, Kneifel and Berger (1994) detected that some spices had *B. cereus* counts as high as 10⁵ cfu/g. Therefore, the use of such contaminated spices as additive in food may represent a risk in the case of inadequate heat treatment. The counts of *B. cereus* group bacteria in 75 and 83.3% of raw poultry meat and cooked poultry meat samples, respectively, were below 10³ cfu/g. None of these samples showed bacterial amounts above 10⁴ cfu/g. These bacterial loads were slightly lower than those found in the Sudershan et al. (2012) study focusing on the microbiological hazards in poultry based street food. They published a contamination level ranging from 2.4 to 2.6 10³ cfu/g.

The amounts of *B. cereus* group bacteria in such food may be related to contaminations vehiculated by food additives added to poultry meat during cooking (Floristean et al., 2007) or to cross-contaminations by the food handlers, the cooking utensils or the environment. The presence of *B. cereus* group bacteria in raw chicken meat may be due to the contamination during slaughtering, processing delivery, transportation, or storage of the meat. Inadequate temperatures of cooking or storage of the raw poultry may also facilitate bacterial growth (Floristean et al., 2007).

As shown in **Table 1**, PCR amplification of the *sspE* gene revealed that the presumptive *B. cereus* group strains isolated from fresh-cut vegetables, raw, and cooked poultry meat samples were all confirmed to belong to the *B. cereus* group. For all the other contaminated samples, at least one of each type of foodstuffs was found negative by PCR. Therefore, these results indicate that the conventional culture method is not sufficient to detect *B. cereus* group bacteria. The high bacterial prevalence in the tested cereal samples (67.7%) is comparable to the finding obtained by Lee et al. (2009), showing that 76% of the cereals they analyzed was contaminated with *B. cereus* group bacteria. The prevalence of *B. cereus* group bacteria in dairy products and in fresh-cut vegetables (4, 8 and 5%, respectively) was lower than that recorded in other studies (Samapundo et al., 2011; Merzougui et al., 2013b). Therefore, a higher incidence, ranging from 30 to 40%, was observed in fresh-cut vegetables (Samapundo et al., 2011) and up to 40% in dairy products (Merzougui et al., 2013b). The variability of bacterial prevalence in dairy products could be attributed to the manufacturer practices and to the storage conditions of the products (Tewari and Abdullah, 2015). The incidence of the *B. cereus* group in raw and cooked poultry meat was 9.4 and 32.7%, respectively. This finding is in agreement with the studies of Floristean et al. (2007) and of Aklilu et al. (2016) showing a higher prevalence of the bacteria in cooked poultry compared to raw poultry samples. The incidence levels reported in the literature are quite variable for spices and for seafood products. Compared to our data, a higher incidence was reported in the spices analyzed by Merzougui et al. (2013b) and Kneifel and Berger (1994) with 32.8 and 49.37%, respectively. Conversely, Shah et al. (1996) reported a lower *B. cereus* group incidence, with 20% contaminated spice samples in India. For seafood products, the incidence was almost the same than that recorded by Das et al. (2009) (36.7%), whereas Rahmati and Labbe (2008) reported a lower prevalence in seafood products (17.9%). *B. cereus* group bacteria have also been identified in 46.3% of the pastry products, 40.8% of the cooked food samples, and 16.7% of the canned products. Our results are in agreement with other studies where the *B. cereus* group was found in heat-treated food such as sauces, soups, pasta, cooked rice (Rosenquist et al., 2005), and pizza (Eglezos et al., 2010), in pastry products and desserts (Rosenquist et al., 2005; Wijnands et al., 2006), and in canned products (Oranusi et al., 2012).

In order to assign *B. cereus* group isolates to different phylogenetic groups (I to VII), partial *panC* gene sequence of each isolates was compared with those of reference strains using a Sym'Previous software tool. Groups II and VI are psychrotrophic, groups III, IV, and VII are mesophilic and

group V has an intermediate behavior (Guinebretière et al., 2008). The highest risk of foodborne illnesses was associated to the group III, a moderate risk to the groups VII, IV, and II, a lower risk to the group V and a very low risk to the group VI (Guinebretière et al., 2008). None of the strains within the group I was isolated from foods (Guinebretière et al., 2008). In this study, the phylogenetic group III was the most frequent in our collection (60.9%). The high prevalence of isolates belonging to group III might be associated with food processing and/or storage of cooked food, often at abusive temperatures as well as prolonged storage at a high temperature (Six et al., 2012). Therefore, these conditions are assumed to select strains of group III which spores are characterized by a high heat resistance and an ability to germinate and grow at 15–45°C (Carlin et al., 2010). This group is one of the most cytotoxic groups that could probably present a potential risk for consumers (Guinebretière et al., 2010). Overall, 29.3% isolates were assigned to the group IV that represents a high risk of food poisoning (Guinebretière et al., 2010). Compared to the group III, a lower occurrence of group IV isolates was highlighted. This could be explained by the fact that strains belonging to the group IV are more susceptible to heat treatments than those belonging to the group III (Afchain et al., 2008; Carlin et al., 2010). The remaining isolates (7.5%) were affiliated to the psychrotrophic phylogenetic group II while any strain was classified into the phylogenetic group VI, presumably due to the higher heat-sensitivity of the spores of psychrotrophic bacteria and considering that the heat treatments applied were severe. Isolates belonging to the group V, which are described as having an intermediate temperature growth range, were rare in our collection, presumably because of their low prevalence in raw materials and ingredients (Afchain et al., 2008). As shown in table 2, each food samples type could be contaminated by a mixture of various genetic groups. Therefore, each step in a processing chain, comprising cooking, blending, and addition of ingredients, may represent a secondary way of contamination of the food product (Afchain et al., 2008). Storage at chilled temperatures may represent an additional risk since psychrotrophic *B. cereus* group strains which have resisted heat treatments are able to grow at low temperature (Afchain et al., 2008; Guinebretière et al., 2008).

This is the first study in Tunisia with the specific aim to identify and determine the occurrence of *B. cereus* group bacteria in food. The genotypic typing of *B. cereus* group isolated in Tunisia carried out by ERIC-PCR and PFGE as well as their assignment to phylogenetic groups allowed a better assessment of the biodiversity of the food isolates. The analysis of the PFGE and ERIC-PCR patterns allowed discriminating 143 and 99 profiles, respectively, from a total of 174 strains tested. Our finding emphasizes the efficiency of PFGE and ERIC-PCR for epidemiological studies. In this study, the use of PFGE and ERIC-PCR for typing *B. cereus* group strains highlighted that some genetic relatedness are not correlated with sample origins and/or phylogenetic group. This diversity could suggest various origins of contamination such as raw materials, equipments and processing (Andersson et al., 1995; Altayar and Sutherland, 2006). As shown in **Table 3**, the majority

TABLE 3 | Relationships between ERIC-PCR and PFGE profiles within *B. cereus* isolates.

Clusters	Isolates	ERIC-PCR profiles ^Φ	PFGE profiles ^Υ
ER1	5380 13J	S	D
	5380 7J	S	D
ER2	ER2(1)	5603	S
		5655	S
	ER2(2)	5662 13J	S
		5662 7J	S
ER3	4785	S	D
	5664	S	D
ER4	4927 GC	S	D
	4927 PC	S	D
ER5	4309 13J	S	D
	4309 8J	S	D
ER6	3940 PC	S	S
	3940 GC	S	S
ER7	2787	S	D
	2788	S	D
ER8	C28	S	D
	E1	S	D
ER9	E16	S	D
	P1 19J	S	S
	P1 8J	S	S
	P2 7J	S	S
	P2 13J	S	D
	E19	S	D
	E2	S	D
	E7	S	D
	E10	S	D
	ER10	C22	S
C25 PC		S	D
C18 PC		S	D
C21		S	D
C20		S	D
C26		S	D
C27		S	D
C18 GC		S	D
C14		S	D
C17		S	D
ER11	3988 GC	S	D
	4000	S	D
ER12	4855	S	D
	4931	S	D
	3928 GC	S	S

(Continued)

TABLE 3 | Continued

Clusters	Isolates	ERIC-PCR profiles ^Φ	PFGE profiles ^Υ
	3928 PC	S	S
ER13	4920 GC	S	S
	4920 PC	S	S
	4788	S	S
ER14	4830	S	S
	4851	S	D
ER15	3942 PC	S	D
	3942 GC	S	D
ER16	4084	S	D
	4171	S	D
	3938 GC	S	S
	3938 PC	S	S
ER17	159	S	S
	160	S	S
	4006	S	D
	4314	S	D
	4315	S	D
	4316	S	D
ER18	4007	S	S
	4044	S	S
	3949	S	D
	3996	S	D
ER19	P3 13J	S	D
	P3 7J	S	D
	4086	S	D
ER20	2957 13J	S	D
	3201	S	D
ER21	168	S	D
	3051	S	D
ER22	5600	S	D
	5655	S	D
	5728	S	D
	3997	S	D
ER23	2875	S	D
	3041	S	D
	2874	S	D
ER24	4167	S	D
	4477	S	D
ER25	2873	S	D
	2876	S	D
ER26	4253 GC	S	S

(Continued)

TABLE 3 | Continued

Clusters	Isolates	ERIC-PCR profiles ^Φ	PFGE profiles ^Υ
	4253 PC	S	S
	4220	S	S
ER27	4068 13J	S	S
	4068 7J	S	S
	2981	S	D
ER28	4160	S	D
	4593	S	D
ER29	2900	S	D
	2956	S	D
ER30	2892	S	D
	3047	S	D
	3296	S	D
ER31	3199	S	D
	3988 PC	S	D
ER32	2772	S	D
	3297	S	D
ER33	499	S	D
	5456	S	D
ER34	SF2 GC	S	S
	SR GC	S	S
ER35	2975	S	D
	2976	S	D
ER36	227	S	S
	228	S	S
	478	S	D
ER37	P7	S	D
	SF1 PC	S	D
ER38	2883	S	D
	2884	S	D
PF1	2789	D	S
	4727	D	S
PF2	3928 GC	S	S
	3928 PC	S	S
PF3	842	D	S
	C18 PC	D	S
PF4	C13	D	S
	SF1 GC	D	S
PF5	5674	D	S
	C22	D	S

(Continued)

TABLE 3 | Continued

Clusters	Isolates	ERIC-PCR profiles ^Φ	PFGE profiles ^Υ
PF6	3042	D	S
	C25 GC	D	S
PF7	3607	D	S
	4478	D	S
PF8	3938 GC	S	S
	3938 PC	S	S
PF9	4663	D	S
	4664	D	S
PF10	171	D	S
	2976	D	S
PF11	3988 GC	D	S
	3988 PC	D	S
PF12	2788	D	S
	2875	D	S
PF 13	SF2 GC	S	S
	SRGC	S	S
PF14	2874	D	S
	2876	D	S
PF15	5600	D	S
	COUS GC	D	S
PF16	5603	S	S
	5655	S	S
PF17	4788	S	S
	4830	S	S
PF18	4920 GC	S	S
	4920 PC	S	S
PF19	4007	S	S
	4044	S	S
PF20	2884	D	S
	2885	D	S
PF21	5662 13J	S	S
	5662 7J	S	S
	SF2 PC	D	S
PF22	4068 13J	S	S
	4068 7J	S	S
PF23	P1 19J	S	S
	P2 7J	S	S
	P1 8J	S	S
PF24	3940 GC	S	S

(Continued)

TABLE 3 | Continued

Clusters	Isolates	ERIC-PCR profiles Φ	PFGE profiles Υ
	3940 PC	S	S
PF25	4314	S	S
	4316	S	S
	2770	D	S
PF26	227	S	S
	228	S	S
PF27	4253 PC	S	S
	4253 GC	S	S
	4220	S	S

Υ Based on the PFGE Dendrogram shown in Figure 1.

Φ Based on the ERIC-PCR Dendrogram shown in Figure 2.

ER, ERIC-PCR cluster; PF, PFGE cluster; S, Similar; D, Different.

Depending to their PFGE profiles, The four isolates belonging to ER2 cluster are divided into two sub-clusters: ER2 (1) and ER2 (2). Each sub-cluster displayed identical PFGE profiles but different from the other one.

of clusters with identical ERIC-PCR profiles displayed at least one strain exhibiting a different PFGE profile. Our finding is in agreement with previous studies, including a study on *Salmonella* (Fendri et al., 2013) and another on *B. cereus* group (Merzougui et al., 2013a), which showed that PFGE presents a higher discriminatory power than ERIC-PCR. However, ERIC-PCR appeared to be more discriminative than PFGE when strains with different ERIC-PCR profiles showed identical PFGE profiles. Therefore, the level of discrimination is different for each method. Consequently, PFGE and ERIC-PCR each provide its specific measure of genetic diversity (Kidd et al., 2011). In principle, ERIC-PCR reveals a profile of DNA fragments of different sizes depending on the genomic locations of specific repetitive sequences, while PFGE reveals restriction site polymorphisms arising from the genomic locations of *Sma*I sites. Thus, ERIC-PCR may have a complementary role to PFGE typing for a better assessment of the biodiversity of *B. cereus* group strains in food products.

Several studies emphasize that MLST most likely allows detecting more variations in the bacterial genome than PFGE and is therefore more discriminatory (Revazishvili et al., 2004; Harbottle et al., 2006; Ehling-Schulz and Messelhäusser, 2013). However, the seven genes, which MLST is based on, do not mutate fast enough to show a genetic diversity signature (Ågren et al., 2017). Indeed, it is possible that critical strain-differentiating nucleotide substitutions, insertion or deletion were localized outside the seven loci analyzed by MLST (Noller et al., 2003). Therefore, PFGE and ERIC-PCR has the advantage of randomly “probing” the entire genome, whereas MLST only analyzes nucleotides within targeted genes. Another major drawback of MLST-based approaches is the requirement of substantial hands-on-time for the sequencing of seven genes per strain and subsequent data analysis, which limits its applicability for high throughput studies (Ehling-Schulz and Messelhäusser, 2013). Finally, the comparison of these major three typing

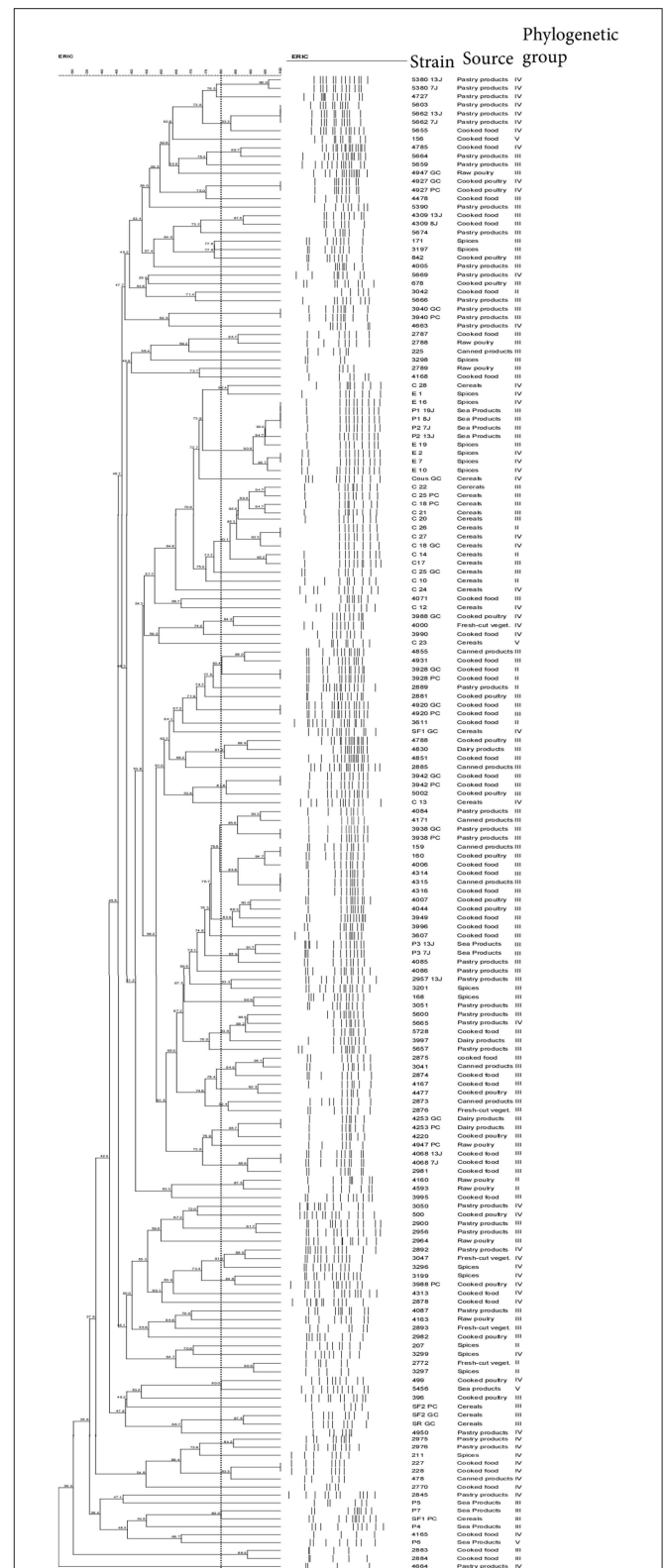


FIGURE 2 | ERIC-PCR Dendrogram showing the relationship between *B. cereus* isolate. The similarities between strains were evaluated using the Dice coefficient and the UPGMA clustering method. Genetic similarity between samples in duplicate is 80%.

methods is warranted for each bacterial species before one makes a decision concerning which method has the superior discriminatory ability. As perspective, the use of MLST would be of considerable interest for a better evaluation of the genetic diversity inside the present bacterial collection.

Although the loads in most of the tested samples are at levels considered to be safe for consumption, the relatively higher prevalence as well as the diversity observed among *B. cereus* group isolates contaminating Tunisian food could represent a significant health risk in Tunisia. Furthermore, the phylogenetic group III, which is recognized as being generally highly cytotoxic was the most frequent in our collection, and especially in cooked samples (cooked food, pastry products, and cooked poultry products). Therefore, serious attention should be devoted to the sanitary and temperature conditions under which foods are prepared, cooked, and marketed in Tunisia. An overall assessment of the sanitary risk potential linked to *B. cereus* group bacteria needs additional research, including cytotoxicity tests. These future works will allow confirming the need of including the *B. cereus* group in disease control and food safety programs,

as well as in routine clinical and food quality control laboratories in Tunisia.

AUTHOR CONTRIBUTIONS

MG-B: conception and design of the work and writing of the manuscript; MS and MZ: interpretation of the data, writing, and review of the manuscript; NG: acquisition, analysis, and interpretation of data; SS and FM-A: supervision of laboratory work and cultures; FB and SJ: contribution to the writing and review; MG and RG: supervision of the project, important intellectual contributions and final approval of the version to be published.

ACKNOWLEDGMENTS

This work is part of a doctoral thesis by MG-B. The authors are grateful to all collaborators in this study. We would like to thank The European Commission of Erasmus+ program for their financial support.

REFERENCES

- Afchain, A. L., Carlin, F., Nguyen-The, C., and Albert, I. (2008). Improving quantitative exposure assessment by considering genetic diversity of *Bacillus cereus* in cooked, pasteurized and chilled foods. *Int. J. Food Microbiol.* 128, 165–173. doi: 10.1016/j.ijfoodmicro.2008.07.028
- Aklilu, E., Tukimin, E. B., Daud, N. B. A., and Kyaw, T. (2016). Enterotoxigenic *Bacillus cereus* from cooked chicken meat: a potential public health hazard. *Malays. J. Microbiol.* 12, 112–115. doi: 10.21161/mjm.70215
- Aksu, H., Bostan, K., and Ergün, O. (2000). Presence of *Bacillus cereus* in packaged some spices and herbs sold in Istanbul. *Pak. J. Biol. Sci.* 3, 710–712. doi: 10.3923/pjbs.2000.710.712
- Altayar, M., and Sutherland, A. D. (2006). *Bacillus cereus* is common in the environment but emetic toxin producing isolates are rare. *J. Appl. Microbiol.* 100, 7–14. doi: 10.1111/j.1365-2672.2005.02764.x
- Ågren, J., Schäfer, M. O., and Forsgren, E. (2017). Using whole genome sequencing to study American foulbrood epidemiology in honeybees. *PLoS ONE* 12:e0187924. doi: 10.1371/journal.pone.0187924
- Andersson, A., Ronener, U., and Granum, P. E. (1995). What problems does the food industry have with the spore-forming pathogens *Bacillus cereus* and *Clostridium perfringens*? *Int. J. Food Microbiol.* 28, 145–155. doi: 10.1016/0168-1605(95)00053-4
- Ankolekar, C., Rahmati, T., and Labbé, R. G. (2009). Detection of toxigenic *Bacillus cereus* and *Bacillus thuringiensis* spores in U.S. rice. *Int. J. Food Microbiol.* 128, 460–466. doi: 10.1016/j.ijfoodmicro.2008.10.006
- Stenfors Arnesen, L. P., Fagerlund, A., and Granum, P. E. (2008). From soil to gut: *Bacillus cereus* and its food poisoning toxins. *FEMS Microbiol.* 32, 579–606. doi: 10.1111/j.1574-6976.2008.00112.x
- Bedi, S. K., Sharma, C. S., Gill, J. P. S., Aulakh, R. S., and Sharma, J. K. (2005). Incidence of enterotoxigenic *B. cereus* in milk and milk products. *J. Food Sci. Tech.* 42, 272–275.
- Borch, E., and Arinder, P. (2002). Bacteriological safety issues in red meat and ready-to-eat meat products, as well as control measures. *Meat Sci.* 62, 381–390. doi: 10.1016/S0309-1740(02)00125-0
- Carlin, F., Brillani, J., Brousso, V., Clavel, T., Dupont, C., Jobin, M., et al. (2010). Adaptation of *Bacillus cereus*, an ubiquitous worldwide-distributed foodborne pathogen, to a changing environment. *Food Res. Int.* 43, 1885–1894. doi: 10.1016/j.foodres.2009.10.024
- Claus, D., and Berkeley, R. C. W. (1986). "Genus *Bacillus*," in *Bergey's Manual of Systematic Bacteriology, Vol 2*, eds P. H. A. Sneath, N. S. Mair, M. E. Sharpe, and J. G. Holt (Baltimore, MD: The Williams and Wilkins), 1104–1139.
- Das, S., Surendran, P. K., and Thampuran, N. (2009). PCR-based detection of enterotoxigenic isolates of *Bacillus cereus* from tropical seafood. *Indian J. Med. Res.* 129, 316–320.
- Drobniewski, F. A. (1993). *Bacillus cereus* and related species. *Clin. Microbiol. Rev.* 6, 324–338. doi: 10.1128/CMR.6.4.324
- Eglezos, S., Huang, B., Dykes, G. A., and Fegan, N. (2010). The prevalence and concentration of *Bacillus cereus* in retail food products in Brisbane, Australia. *Foodborne Pathog. Dis.* 7, 867–870. doi: 10.1089/fpd.2009.0469
- Ehling-Schulz, M., and Messelhäusser, U. (2013). *Bacillus* "next generation" diagnostics: moving from detection toward subtyping and risk-related strain profiling. *Front. Microbiol.* 4:32. doi: 10.3389/fmicb.2013.00032
- Faillie, C., Bénézech, T., Midelet-Bourdin, G., Lequette, Y., Clarisse, M., Ronse, G., et al. (2014). Sporulation of *Bacillus* spp. within biofilms: a potential source of contamination in food processing environments. *Food Microbiol.* 40, 64–74. doi: 10.1016/j.fm.2013.12.004
- Fendri, I., Ben Hassena, A., Grosset, N., Barkallah, M., Khannous, L., Chuat, V., et al. (2013). Genetic diversity of food-isolated *Salmonella* Strains through Pulsed Field Gel Electrophoresis (PFGE) and Enterobacterial Repetitive Intergenic Consensus (ERIC-PCR). *PLoS ONE* 8:e81315. doi: 10.1371/journal.pone.0081315
- Floristean, V., Cretu, C., and Carp Carare, M. (2007). Bacteriological characteristics of *Bacillus cereus* isolates from poultry. *Bull. USAMV-CN* 64, 425–430. doi: 10.15835/buasvmcn-vm:64:1-2:2458
- Food Standards Australia New Zealand [FSANZ] (2001). *Guidelines for Microbiological Examination of Ready-to-Eat Foods*. Available online at: <https://www.foodstandards.gov.au/code/microbiolimits/documents/Guidelines%20for%20Micro%20exam.pdf>
- Gilbert, R. J., and Kramer, J. M. (1986). "Bacillus Cereus Food Poisoning, in Progress, in Food Safety: Proceedings of Symposium, eds D. C. Cliver and B. A. Cochrane (Madison, WI: Food Research Institute, University of Wisconsin-Madison), 85–93.
- Granum, P. E. (1994). *Bacillus cereus* and its toxins. *Soc. Appl. Bacteriol. Symp. Ser.* 23, 61S–66S.
- Guinebretière, M. H., Auger, S., Galleron, N., Contzen, M., De Sarrau, B., De Buyser, M. L., et al. (2013). *Bacillus Cytotoxicus* sp. nov. is a novel thermotolerant species of the *Bacillus cereus* group occasionally associated with food poisoning. *Int. J. Syst. Evol. Microbiol.* 63, 31–40. doi: 10.1099/ijs.0.030627-0
- Guinebretière, M. H., Thompson, F. L., Sorokin, A., Normand, P., Dawyndt, P., Ehling-Schulz, M., et al. (2008). Ecological diversification in the *Bacillus cereus* Group. *Environ. Microbiol.* 10, 851–865. doi: 10.1111/j.1462-2920.2007.01495.x
- Guinebretière, M. H., Velge, P., Couvert, O., Carlin, F., Debuyser, M. L., and Nguyen-The, C. (2010). Ability of *Bacillus cereus* Group to cause food poisoning

- varies according to phylogenetic affiliation (groups I to VII) rather than species affiliation. *Environ. Microbiol.* 10, 851–865. doi: 10.1128/JCM.00921-10
- Havelaar, A. H., Haagsma, J. A., Mangen, M. J., Kemmeren, J. M., Verhoef, L. P., Vijgen, S. M., et al. (2012). Disease burden of foodborne pathogens in the Netherlands, 2009. *Int. J. Food Microbiol.* 156, 231–238. doi: 10.1016/j.ijfoodmicro.2012.03.029
- Harbottle, H., White, D. G., McDermott, P. F., Walker, R. D., and Zhao, S. (2006). Comparison of multilocus sequence typing, pulsed-field gel electrophoresis, and antimicrobial susceptibility typing for characterization of *Salmonella enterica* serotype Newport isolates. *J. Clin. Microbiol.* 44, 2449–2457. doi: 10.1128/JCM.00019-06
- Hendriksen, N. B., and Hansen, B. M. (2011). Diagnostic properties of three conventional selective plating media for selection of *Bacillus cereus*, *B. thuringiensis* and *B. weihenstephanensis*. *Folia Microbiol.* 56, 535–539. doi: 10.1007/s12223-011-0079-0
- Hill, K. K., Ticknor, L. O., Okinaka, R. T., Asay, M., Blair, H., Bliss, K. A., et al. (2015). Fluorescent amplified fragment length polymorphism analysis of *Bacillus anthracis*, *Bacillus cereus*, and *Bacillus thuringiensis* isolates. *Appl. Environ. Microbiol.* 70, 1068–1080. doi: 10.1128/AEM.70.2.1068-1080.2004
- Jan, S., Brunet, N., Techer, C., Le Marechal, C., Kone, A. Z., Grosset, N., et al. (2011). Biodiversity of psychrotrophic bacteria of the *Bacillus cereus* group collected on farm and in egg product industry. *Food Microbiol.* 28, 261–265. doi: 10.1016/j.fm.2010.05.029
- Jiménez, G., Urdiain, M., Cifuentes, A., López-López, A., Blanch, A. R., Tamames, J., et al. (2013). Description of *Bacillus toyonensis* sp. nov. a novel species of the *Bacillus cereus* group, and pairwise genome comparisons of the species of the group by means of ANI calculations. *Syst. Appl. Microbiol.* 36, 383–391. doi: 10.1016/j.syapm.2013.04.008
- Kidd, T. J., Grimwood, K., Ramsay, K. A., Rainey, P. B., and Bell, S. C. (2011). Comparison of three molecular techniques for typing *Pseudomonas aeruginosa* isolates in sputum samples from patients with cystic fibrosis. *J. Clin. Microbiol.* 49, 263–268. doi: 10.1128/JCM.01421-10.
- Kim, K., Seo, J., Wheeler, K., Park, C., Kim, D., Park, S., et al. (2005). Rapid genotypic detection of *Bacillus anthracis* and the *Bacillus cereus* group by multiplex real time PCR melting curve analysis. *Immunol. Med. Microbiol.* 43, 301–310. doi: 10.1016/j.femsim.2004.10.005
- Kneifel, W., and Berger, E. (1994). Microbiological criteria of random samples of spices and herbs retailed on the Austrian market. *J. Food Protect.* 57, 893–901. doi: 10.4315/0362-028X-57.10.893
- Kramer, J. M., and Gilbert, R. J. (1989). “*Bacillus cereus* and other *Bacillus* species,” in *Foodborne Bacterial Pathogens*, ed M. P. Doyle (New York, NY: Marcel Dekker Inc), 21–70.
- Lee, H. Y., Chai, L. C., Tang, S. Y., Jinap, S., Ghazali, M., Nakaguchi, Y., et al. (2009). Application of MPN-PCR in biosafety of *Bacillus cereus* s.l. for ready-to-eat cereals. *Food Control* 20, 1068–1071. doi: 10.1016/j.foodcont.2009.01.009
- Lücking, G., Stoeckel, M., Atamer, Z., Hinrichs, J., and Ehling-Schulz, M. (2013). Characterization of aerobic spore-forming bacteria associated with industrial dairy processing environments and product spoilage. *Int. J. Food Microbiol.* 166, 270–279. doi: 10.1016/j.ijfoodmicro.2013.07.004
- Merzougui, S., Lkhider, M., Grosset, N., Gautier, M., and Cohen, N. (2013a). Differentiation by molecular typing of *Bacillus cereus* isolates from food in Morocco: PFGE-Eric PCR. *J. Food Public Health* 3, 223–227. doi: 10.5923/j.fph.20130304.06
- Merzougui, S., Lkhider, M., Grosset, N., Gautier, M., and Cohen, N. (2013b). Prevalence, PFGE typing and antibiotic resistance of *Bacillus cereus* group isolated from food in Morocco. *Foodborne Pathog. Dis.* 11, 145–149. doi: 10.1089/fpd.2013.1615
- Noller, A. C., McEllistrem, M. C., Stine, O. C., Morris Jr, J. G., Boxrud, D. J., Dixon, B., et al. (2003). Multilocus sequence typing reveals a lack of diversity among *Escherichia coli* O157: H7 isolates that are distinct by pulsed-field gel electrophoresis. *J. Clin. Microbiol.* 41, 675–679. doi: 10.1128/JCM.41.2.675-679.2003
- Oranusi, U. S., Braide, W., and Osigwe, G. A. (2012). Investigation on the microbial profile of canned foods. *J. Biol. Food Sci. Res.* 1, 15–18. Available online at: <https://pdfs.semanticscholar.org/1d22/c342b1ebfe140efef9912c03dfe658f930d.pdf>
- Pfrunder, S., Grossmann, J., Hunziker, P., Brunisholz, R., Gekenidis, M. T., and Drissner, D. (2016). *Bacillus cereus* group-type strain-specific diagnostic peptides. *J. Proteome Res.* 15, 3098–3107. doi: 10.1021/acs.jproteome.6b00216
- Public Health England [PHE] (2009). *Guidelines for Assessing the Microbiological Safety of Ready-to-Eat Foods Placed on the Market*. Available online at: www.gov.uk/government/publications/ready-to-eat-foods-microbiological-safety-assessment-guidelines
- Rahmati, T., and Labbe, R. (2008). Levels and toxigenicity of *Bacillus cereus* and *Clostridium perfringens* from retail seafood. *J. Food Prot.* 71, 1178–1185. doi: 10.4315/0362-028X-71.6.1178
- Revazishvili, T., Kotetishvili, M., Stine, O. C., Kreger, A. S., Morris, J. G. Jr., and Sulakvelidze, A. (2004). Comparative analysis of multilocus sequence typing and pulsed-field gel electrophoresis for characterizing *Listeria monocytogenes* strains isolated from environmental and clinical sources. *J. Clin. Microbiol.* 42, 276–285. doi: 10.1128/JCM.42.1.276-285.2004
- Rosenquist, H., Smidt, L., Andersen, S. R., Jensen, G. B., and Wilcks, A. (2005). Occurrence and significance of *Bacillus cereus* and *Bacillus thuringiensis* in ready-to-eat food. *FEMS Microbiol.* 250, 129–136. doi: 10.1016/j.femsle.2005.06.054
- Samapundo, S., Heyndrickx, M., Xhaferi, R., and Devlieghere, F. (2011). Incidence, diversity and toxin gene characteristics of *Bacillus cereus* group strains isolated from food products marketed in Belgium. *Int. J. Food Microbiol.* 150, 34–41. doi: 10.1016/j.ijfoodmicro.2011.07.013
- Shah, R. C., Wadher, B. J., Bhoosreddy, G. L. (1996). Incidence and characteristics of *Bacillus cereus* isolated from Indian foods. *J. Food Sci. Tech.* 33, 249–250.
- Six, S. C., Buysier, M., Vignaud, M., Dao, T. T., Messio, S., Payraud, S., et al. (2012). Toxi-infections alimentaires collectives à *Bacillus cereus* : bilan de la caractérisation des souches de 2006 à 2010. *Bull. Épidémiol. Anim. Aliment.* 50, 57–61. Available online at: [http://invs.santepubliquefrance.fr//pmb/invs/\(id\)/PMB_10678](http://invs.santepubliquefrance.fr//pmb/invs/(id)/PMB_10678)
- Sudershan, R. V., Naveen Kumar, R., Kashinath, L., Bhaskar, V., and Polasa, K. (2012). Microbiological hazard identification and exposure assessment of poultry products sold in various localities of Hyderabad, India. *Sci. World J.* 2012:736040. doi: 10.1100/2012/736040
- Tewari, A., and Abdullah, S. (2015). *Bacillus cereus* food poisoning: international and Indian perspective. *J. Food Sci. Technol.* 52, 2500–2511. doi: 10.1007/s13197-014-1344-4
- Väisänen, O. M., Mentu, J., and Salkinoja-Salonen, M. S. (1991). Bacteria in food packaging paper and board. *J. Appl. Microbiol.* 71, 130–133.
- Valjevac, S., Hilaire, V., Lisanti, O., Ramisse, F., Hernandez, E., Cavallo, J. D., et al. (2005). Comparison of minisatellite polymorphisms in the *Bacillus cereus* complex: a simple assay for large-scale screening and identification of strains most closely related to *Bacillus anthracis*. *Appl. Environ. Microbiol.* 71, 6613–6623. doi: 10.1128/AEM.71.11.6613-6623.2005
- Van Cauteren, D., Le Strat, Y., Sommen, C., Bruyand, M., Tourdjman, M., Da Silva, N. J., et al. (2017). Estimated Annual Numbers of Foodborne pathogen-associated illnesses, hospitalizations, and deaths, France, 2008–2013. *Emerg. Infect. Dis.* 23, 1486–1492. doi: 10.3201/eid2309.170081
- Versalovic, J., Koeuth, T., and Lupskil, J. R. (1991). Distribution of repetitive DNA sequences in eubacteria and application to fingerprinting of bacterial genomes. *Nucleic Acids Res.* 19, 6823–6831. doi: 10.1093/nar/19.24.6823
- Walsh, P. S., Metzger, D. A., and Higuchi, R. (1991). Chelex 100 as a medium for simple extraction of DNA for PCR-based typing from forensic material. *BioTechniques* 10, 506–513.
- Wijnands, L. M., Dufrenne, J. B., Rombouts, F. M., in, 'T., and Veld, P. H., Van Leusden, F. M. (2006). Prevalence of potentially pathogenic *Bacillus cereus* in food commodities. in the Netherlands. *J. Food Prot.* 69, 2587–2594. doi: 10.4315/0362-028X-69.11.2587

Conflict of Interest Statement: The authors declare that the research was conducted in the absence of any commercial or financial relationships that could be construed as a potential conflict of interest.

Copyright © 2018 Gdoura-Ben Amor, Siala, Zayani, Grosset, Smaoui, Messadi-Akrout, Baron, Jan, Gautier and Gdoura. This is an open-access article distributed under the terms of the Creative Commons Attribution License (CC BY). The use, distribution or reproduction in other forums is permitted, provided the original author(s) and the copyright owner are credited and that the original publication in this journal is cited, in accordance with accepted academic practice. No use, distribution or reproduction is permitted which does not comply with these terms.