



HAL
open science

Stationary states of boundary driven exclusion processes with nonreversible boundary dynamics

Clément Erignoux, Claudio Landim, T. Xu

► To cite this version:

Clément Erignoux, Claudio Landim, T. Xu. Stationary states of boundary driven exclusion processes with nonreversible boundary dynamics. *Journal of Statistical Physics*, 2018, 10.1007/s10955-018-2021-1 . hal-01728585

HAL Id: hal-01728585

<https://hal.science/hal-01728585v1>

Submitted on 29 Aug 2022

HAL is a multi-disciplinary open access archive for the deposit and dissemination of scientific research documents, whether they are published or not. The documents may come from teaching and research institutions in France or abroad, or from public or private research centers.

L'archive ouverte pluridisciplinaire **HAL**, est destinée au dépôt et à la diffusion de documents scientifiques de niveau recherche, publiés ou non, émanant des établissements d'enseignement et de recherche français ou étrangers, des laboratoires publics ou privés.

STATIONARY STATES OF BOUNDARY DRIVEN EXCLUSION PROCESSES WITH NONREVERSIBLE BOUNDARY DYNAMICS

C. ERIGNOUX, C. LANDIM, T. XU

ABSTRACT. We prove a law of large numbers for the empirical density of one-dimensional, boundary driven, symmetric exclusion processes with different types of non-reversible dynamics at the boundary. The proofs rely on duality techniques.

1. INTRODUCTION

This article provides partial answers to a question raised to us by H. Spohn. The stationary states of boundary driven interacting particle systems have been extensively studied lately, as solvable examples of nonequilibrium stationary states, cf. [3, 2] and references therein. One of the main goals is to derive in this context the nonequilibrium functional which plays a role analogous to the entropy in the Onsager theory of nonequilibrium thermodynamics [11, 12].

This program has been achieved for a class of boundary driven interacting particle systems in two different ways. On the one hand, relying on Derrida's formula for the stationary state as a product of matrices, Derrida, Lebowitz and Speer [4] obtained an explicit formula for the nonequilibrium free energy of one-dimensional boundary driven exclusion processes. On the other hand and by the same time, Bertini et al. [1] derived the same formula for the nonequilibrium free energy by solving the Hamilton-Jacobi equation for the quasi-potential associated to the dynamical large deviations principle for the empirical density.

Both approaches rely on the deduction of a large deviations principle for the empirical density under the stationary state. The proof of this result depends strongly on the non-conservative boundary dynamics which models the interaction of the system with the reservoirs, and it has been achieved only for dynamics which satisfy the detailed balance conditions with respect to some Gibbs measure. If this dynamics is slightly perturbed, Derrida's formula for the stationary state as a product of matrices is no more available, and a bound for the entropy production, one of the fundamental ingredients in the proof of the one and two blocks estimates, is no more available.

We examine in this article the asymptotic behavior of the empirical density under the stationary state of boundary driven exclusion processes whose boundary dynamics do not satisfy a detailed balance condition. We consider three classes of interaction. The first one consists of all boundary dynamics whose generator does not increase the degree of functions of degree 1 and 2. The second class includes all dynamics whose interaction with the reservoirs depends weakly on the configuration. Finally, the third class comprises all exclusion processes whose boundary

dynamics is speeded-up. Using duality techniques, we prove a law of large numbers for the empirical measure under the stationary state for these three types of interaction with the reservoirs.

Asymmetric exclusion dynamics on the positive half-line with complex boundary dynamics have been considered by Sonigo [13].

2. NOTATION AND RESULTS

Consider the symmetric, simple exclusion process on $\Lambda_N = \{1, \dots, N-1\}$ with reflecting boundary conditions. This is the Markov process on $\Omega_N = \{0, 1\}^{\Lambda_N}$ whose generator, denoted by $L_{b,N}$, is given by

$$(L_{b,N}f)(\eta) = \sum_{k=1}^{N-2} \{f(\sigma^{k,k+1}\eta) - f(\eta)\}. \quad (2.1)$$

In this formula and below, the configurations of Ω_N are represented by the Greek letters η, ξ , so that $\eta_k = 1$ if site $k \in \Lambda_N$ is occupied for the configuration η and $\eta_k = 0$ otherwise. The symbol $\sigma^{k,k+1}\eta$ represents the configuration obtained from η by exchanging the occupation variables η_k, η_{k+1} :

$$(\sigma^{k,k+1}\eta)_j = \begin{cases} \eta_{k+1} & \text{if } j = k \\ \eta_k & \text{if } j = k + 1 \\ \eta_j & \text{if } j \in \Lambda_N \setminus \{k, k + 1\}. \end{cases}$$

This dynamics is put in contact at both ends with non-conservative dynamics. On the right, it is coupled to a reservoir at density $\beta \in (0, 1)$. This interaction is represented by the generator $L_{r,N}$ given by

$$(L_{r,N}f)(\eta) = \{\beta(1 - \eta_{N-1}) + (1 - \beta)\eta_{N-1}\} \{f(\sigma^{N-1}\eta) - f(\eta)\}, \quad (2.2)$$

where $\sigma^k\eta, k \in \Lambda_N$, is the configuration obtained from η by flipping the occupation variable η_k ,

$$(\sigma^k\eta)_j = \begin{cases} 1 - \eta_k & \text{if } j = k \\ \eta_j & \text{if } j \in \Lambda_N \setminus \{k\}. \end{cases}$$

On the left, the system is coupled with different non-conservative dynamics. The purpose of this paper is to investigate the stationary state induced by these different interactions.

2.1. Boundary dynamics which do not increase degrees. The first left boundary dynamics we consider are those which keep the degree of functions of degree 1 and 2: those whose generator, denoted by $L_{l,N}$, are such that for all $j \neq k$,

$$\begin{aligned} L_{l,N} \eta_j &= a^j + \sum_{\ell} a_{\ell}^j \eta_{\ell}, \\ L_{l,N} \eta_j \eta_k &= b^{j,k} + \sum_{\ell} b_{\ell}^{j,k} \eta_{\ell} + \sum_{\ell, m} b_{\ell, m}^{j,k} \eta_{\ell} \eta_m \end{aligned} \quad (2.3)$$

for some coefficients $a^j, a_{\ell}^j, b^{j,k}, b_{\ell}^{j,k}, b_{\ell, m}^{j,k}$.

Fix $p \geq 0$, and let $\Lambda_p^* = \{-p, \dots, 0\}$, $\Omega_p^* = \{0, 1\}^{\Lambda_p^*}$. Consider the generators of Markov chains on Ω_p^* given by

$$(L_R f)(\eta) = \sum_{j \in \Lambda_p^*} r_j [\alpha_j (1 - \eta_j) + \eta_j (1 - \alpha_j)] \{f(\sigma^j \eta) - f(\eta)\},$$

$$(L_C f)(\eta) = \sum_{j \in \Lambda_p^*} \sum_{k \in \Lambda_p^*} c_{j,k} [\eta_k (1 - \eta_j) + \eta_j (1 - \eta_k)] \{f(\sigma^j \eta) - f(\eta)\},$$

$$(L_A f)(\eta) = \sum_{j \in \Lambda_p^*} \sum_{k \in \Lambda_p^*} a_{j,k} [\eta_k \eta_j + (1 - \eta_j)(1 - \eta_k)] \{f(\sigma^j \eta) - f(\eta)\}.$$

In these formulae and below, r_j , $c_{j,k}$ and $a_{j,k}$ are non-negative constants, $0 \leq \alpha_j \leq 1$, and $c_{j,j} = a_{j,j} = 0$ for $j \in \Lambda_p^*$.

The generator L_R models the contact of the system at site j with an infinite reservoir at density α_j . At rate $r_j \geq 0$, a particle, resp. a hole, is placed at site j with probability α_j , resp. $1 - \alpha_j$. The generator L_C models a replication mechanism, at rate $c_{j,k} \geq 0$, site j copies the value of site k . The generator L_A acts in a similar way. At rate $a_{j,k} \geq 0$, site j copies the inverse value of site k . We add to these dynamics a stirring evolution which exchange the occupation variables at nearest-neighbor sites:

$$(L_S f)(\eta) = \sum_{j=-p}^{-1} \{f(\sigma^{j,j+1} \eta) - f(\eta)\}.$$

The evolution at the left boundary we consider consists in the superposition of the four dynamics introduced above. The generator, denoted by L_l , is thus given by

$$L_l = L_S + L_R + L_C + L_A.$$

Denote by L_G the generator of a general Glauber dynamics on Ω_p^* :

$$(L_G f)(\eta) = \sum_{k=-p}^0 c_k(\eta) \{f(\sigma^k \eta) - f(\eta)\}, \quad (2.4)$$

where c_k are non-negative jump rates which depend on the entire configuration $(\eta_{-p}, \dots, \eta_0)$. We prove in Lemma 3.2 that any Markov chain on Ω_p^* whose generator L_D is given by $L_D = L_S + L_G$ and which fulfills conditions (2.3) can be written as $L_S + L_R + L_C + L_A$ [we show that there are non-negative parameters r_j , $c_{j,k}$, $a_{j,k}$ such that $L_G = L_R + L_C + L_A$]. Therefore, by examining the Markov chain whose left boundary condition is characterized by the generator L_l we are considering the most general evolution in which a stirring dynamics is superposed with a spin flip dynamics which fulfills condition (2.3).

We prove in Lemma 3.3 that the Markov chain induced by the generator L_l has a unique stationary state if

$$\sum_{j \in \Lambda_p^*} r_j + \sum_{j \in \Lambda_p^*} \sum_{k \in \Lambda_p^*} a_{j,k} > 0. \quad (2.5)$$

Assume that this condition is in force. Denote by μ the unique stationary state, and let

$$\rho(k) = E_\mu[\eta_k], \quad k \in \Lambda_p^*, \quad (2.6)$$

be the mean density at site k under the measure μ . Clearly, $0 \leq \rho(k) \leq 1$ for all $k \in \Lambda_p^*$. Since $E_\mu[L_l \eta_j] = 0$, a straightforward computation yields that

$$0 = r_j [\alpha_j - \rho(j)] + (\mathcal{C}\rho)(j) + (\mathcal{A}\rho)(j) + (\mathcal{J}\rho)(j), \quad j \in \Lambda_p^*, \quad (2.7)$$

where

$$(\mathcal{C}\rho)(j) = \sum_{k \in \Lambda_p^*} c_{j,k} [\rho(k) - \rho(j)], \quad (\mathcal{A}\rho)(j) = \sum_{k \in \Lambda_p^*} a_{j,k} [1 - \rho(k) - \rho(j)],$$

$$(\mathcal{T}\rho)(j) = \begin{cases} \rho(-p+1) - \rho(-p) & \text{if } j = -p, \\ \rho(-1) - \rho(0) & \text{if } j = 0, \\ \rho(j+1) + \rho(j-1) - 2\rho(j) & \text{otherwise.} \end{cases}$$

We prove in Lemma 3.4 that (2.7) has a unique solution if condition (2.5) is in force.

Let $\Lambda_{N,p} = \{-p, \dots, N-1\}$. Consider the boundary driven, symmetric, simple exclusion process on $\Omega_{N,p} = \{0, 1\}^{\Lambda_{N,p}}$ whose generator, denoted by L_N , is given by

$$L_N = L_l + L_{0,1} + L_{b,N} + L_{r,N}, \quad (2.8)$$

where $L_{0,1}$ represent a stirring dynamics between sites 0 and 1:

$$(L_{0,1}f)(\eta) = f(\sigma^{0,1}\eta) - f(\eta).$$

There is a little abuse of notation in the previous formulae because the generators are not defined on the space $\Omega_{N,p}$ but on smaller spaces. We believe, however, that the meaning is clear.

Due to the right boundary reservoir and the stirring dynamics, the process is ergodic. Denote by μ_N the unique stationary state, and let

$$\rho_N(k) = E_{\mu_N}[\eta_k], \quad k \in \Lambda_{N,p}, \quad (2.9)$$

be the mean density at site k under the stationary state. Of course, $0 \leq \rho_N(k) \leq 1$ for all $k \in \Lambda_{N,p}$, $N \geq 1$. We prove in Lemma 3.5 that under condition (2.5) there exists a finite constant C_0 , independent of N , such that

$$|\rho_N(k) - \rho(k)| \leq C_0/N, \quad \text{for all } -p \leq k \leq 0,$$

where ρ is the unique solution of (2.7).

The first main result of this articles establishes a law of large numbers for the empirical measure under the stationary state μ_N .

Theorem 2.1. *Assume that $\sum_j r_j > 0$. Then, for any continuous function $G : [0, 1] \rightarrow \mathbb{R}$,*

$$\lim_{N \rightarrow \infty} E_{\mu_N} \left[\left| \frac{1}{N} \sum_{k=1}^{N-1} G(k/N) [\eta_k - \bar{u}(k/N)] \right| \right] = 0,$$

where \bar{u} is the unique solution of the linear equation

$$\begin{cases} 0 = \Delta u, \\ u(0) = \rho(0), \quad u(1) = \beta. \end{cases} \quad (2.10)$$

We refer to Section 3 for the notation used in the next remark.

Remark 2.2. *We believe that Theorem 2.1 remains in force if $\sum_{j \in \Lambda_p^*} r_j = 0$ and $\sum_{j,k \in \Lambda_p^*} a_{j,k} > 0$. This assertion is further discussed in Remark 4.5.*

Remark 2.3. *The case $\sum_{j \in \Lambda_p^*} r_j + \sum_{j,k \in \Lambda_p^*} a_{j,k} = 0$ provides an example in which at the left boundary sites behave as a voter model and acquire the value of one of their neighbors. One can generalize this model and consider an exclusion process in which, at the left boundary, the first site takes the value of the majority in a fixed interval $\{2, \dots, 2p\}$, the left boundary generator being given by*

$$(L_l f)(\eta) = f(M\eta) - f(\eta),$$

where $(M\eta)_k = \eta_k$ for $k \geq 2$, and $(M\eta)_1 = \mathbf{1}\{\sum_{2 \leq j \leq 2p} \eta_j \geq p\}$. In this case it is conceivable that the system alternates between two states, one in which the left density is close to 1 and one in which it is close to 0.

The proof of Theorem 2.1 is presented in Sections 3 and 4. It relies on duality computations. As the boundary conditions do not increase the degrees of a function, the equations obtained from the identities $E_{\mu_N}[L_N \eta_j] = 0$, $E_{\mu_N}[L_N \eta_j \eta_k] = 0$ can be expressed in terms of the density and of the correlation functions.

2.2. Small perturbations of flipping dynamics. We examine in this subsection a model in which the rate at which the leftmost occupation variable is flipped depends locally on the configuration. Consider the generator

$$L_N = L_l + L_{b,N} + L_{r,N}, \quad (2.11)$$

where $L_{b,N}$ and $L_{r,N}$ were defined in (2.1), (2.2). The left boundary generator is given by

$$(L_l f)(\eta) = c(\eta_1, \dots, \eta_p) [f(\sigma^1 \eta) - f(\eta)].$$

for some non-negative function $c : \{0, 1\}^p \rightarrow \mathbb{R}_+$.

Let

$$A = \min_{\xi \in \Omega_p} c(0, \xi), \quad B = \min_{\xi \in \Omega_p} c(1, \xi) \quad (2.12)$$

be the minimal creation and annihilation rates, and denote by

$$\lambda(0, \xi) := c(0, \xi) - A, \quad \lambda(1, \eta) := c(1, \eta) - B$$

the marginal rates. We allow ourselves below a little abuse of notation by considering λ as a function defined on Ω_N and which depends on the first p coordinates, instead of a function defined on Ω_{p+1} . With this notation the left boundary generator can be written as

$$(L_l f)(\eta) = [A + (1 - \eta_1) \lambda(\eta)] [f(T^1 \eta) - f(\eta)] + [B + \eta_1 \lambda(\eta)] [f(T^0 \eta) - f(\eta)],$$

where for $a = 0, 1$,

$$(T^a \eta)_k = \begin{cases} a & \text{if } k = 1, \\ \eta_k & \text{otherwise.} \end{cases}$$

The Markov chain with generator L_N has a unique stationary state because it is irreducible due to the stirring dynamics and the right boundary condition. Denote by μ_N the unique stationary state of the generator L_N , and by E_{μ_N} the corresponding expectation. Let $\rho_N(k) = E_{\mu_N}[\eta_k]$, $k \in \Lambda_N$.

Theorem 2.4. *Suppose that*

$$(p-1) \sum_{\xi \in \Omega_p} \{\lambda(0, \xi) + \lambda(1, \xi)\} < A + B. \quad (2.13)$$

Then, the limit

$$\alpha := \lim_{N \rightarrow \infty} \rho_N(1)$$

exists, and it does not depend on the boundary conditions at $N-1$. Moreover, for any continuous function $G : [0, 1] \rightarrow \mathbb{R}$,

$$\lim_{N \rightarrow \infty} E_{\mu_N} \left[\left| \frac{1}{N} \sum_{k=1}^{N-1} G(k/N) [\eta_k - \bar{u}(k/N)] \right| \right] = 0,$$

where \bar{u} is the unique solution of the linear equation (2.10) with $\rho(0) = \alpha$.

Remark 2.5. *There is not a simple closed formula for the left density α . By coupling, it is proven that the sequence $\rho_N(1)$ is Cauchy and has therefore a limit. The density $\rho_N(1)$ can be expressed in terms of the dual process, a stirring dynamics with creation and annihilation at the boundary.*

Remark 2.6. *A similar result holds for boundary driven exclusion processes in which particles are created at sites $1 \leq k \leq q$ with rates depending on the configuration through the first p sites, provided the rates depend weakly [in the sense (2.13)] on the configuration.*

Remark 2.7. *One can weaken slightly condition (2.13). For $\zeta \in \{0, 1\}^q$, $0 \leq q \leq p-1$, let $A(\zeta) = \min_{\xi} c(\zeta, \xi)$, where the minimum is carried over all configurations $\xi \in \{0, 1\}^{p-q}$. For $a = 0, 1$, and $\zeta \in \cup_{0 \leq q \leq p-1} \{0, 1\}^q$, let $R(\zeta, a) = A(\zeta, a) - A(\zeta) \geq 0$ be the marginal rate. The same proof shows that the assertion of Theorem 2.4 holds if*

$$\sum_{q=2}^p (q-1) \sum_{\zeta \in \{0,1\}^q} R(\zeta) < A + B.$$

Remark 2.8. *In [5], Erignoux proves that the empirical measure evolves in time as the solution of the heat equation with the corresponding boundary conditions.*

The proof of Theorem 2.4 is presented in Section 5. It is based on a duality argument which consists in studying the process reversed in time. We show that under the conditions of Theorem 2.4, to determine the value of the occupation variable η_1 at time 0, we only need to know from the past the behavior of the process in a finite space-time window.

2.3. Speeded-up boundary condition. Recall the notation introduced in Subsection 2.1. Fix $p > 1$ and consider an irreducible continuous-time Markov chain on Ω_p^* , $p > 0$. Denote by L_l the generator of this process, and by μ the unique stationary state. Let

$$\rho(k) = E_{\mu}[\eta_k], \quad k \in \Lambda_p^*, \quad (2.14)$$

be the mean density at site k under the measure μ . Clearly, $0 < \rho(k) < 1$ for all $k \in \Lambda_p^*$. The density can not be 0 or 1 because every configuration has a strictly positive weight under the stationary measure.

Fix a sequence $\ell_N \rightarrow \infty$, and consider the boundary driven, symmetric, simple exclusion process on $\Omega_{N,p}$ whose generator, denoted by L_N , is given by

$$L_N = \ell_N L_l + L_{0,1} + L_{b,N} + L_{r,N},$$

where $L_{0,1}$ represent a stirring dynamics between sites 0 and 1, introduced below (2.8). Note that the left boundary dynamics has been speeded-up by ℓ_N .

Due to the right boundary reservoir and the stirring dynamics, the process is ergodic. Denote by μ_N the unique stationary state, and let

$$\rho_N(k) = E_{\mu_N}[\eta_k], \quad k \in \Lambda_{N,p},$$

be the mean density at site k under the stationary state.

Theorem 2.9. *There exists a finite constant C_0 , independent of N , such that $|\rho_N(0) - \rho(0)| \leq C_0/\sqrt{\ell_N}$. Moreover, for any continuous function $G : [0, 1] \rightarrow \mathbb{R}$,*

$$\lim_{N \rightarrow \infty} E_{\mu_N} \left[\left| \frac{1}{N} \sum_{k=1}^{N-1} G(k/N) [\eta_k - \bar{u}(k/N)] \right| \right] = 0,$$

where \bar{u} is the unique solution of the linear equation (2.10).

Remark 2.10. *The proof of this theorem is based on duality computations, and does not require one and two-blocks estimates. There is an alternative proof relying on an estimate of the entropy production along the lines presented in [6, Proposition 2], [9, Proposition 3.3]. This proof applies to gradient and non-gradient models [8], but it requires ℓ_N to grow at least as N .*

The proof of Theorem 2.9 is presented in Section 6. As the boundary condition has been speeded-up, each time the occupation variables η_0, η_1 are exchanged, the distribution of the variable η_0 is close to its stationary distribution with respect to the left-boundary dynamics.

3. PROOF OF THEOREM 2.1: ONE POINT FUNCTIONS

We prove in this section that the density of particles under the stationary state μ_N is close to the solution of the linear parabolic equation (2.10). We first show that the left boundary dynamics we consider is indeed the most general one which does not increase the degree of functions of degree 1 and 2.

For $A \subset \Lambda_p^*$, let $\Psi_A : \Omega_p^* \rightarrow \mathbb{R}$ be given by $\Psi_A(\eta) = \prod_{k \in A} \eta_k$. Clearly, any function $f : \Omega_p^* \rightarrow \mathbb{R}$ can be written as a linear combination of the functions Ψ_A . A function f is said to be a monomial of order n if it can be written as a linear combination of functions Ψ_A where $|A| = n$ for all A . It is said to be a polynomial of order n if it can be written as a sum of monomials of order $m \leq n$.

Recall the definition of the generator L_G given in (2.4). Fix $-p \leq k \leq 0$, and write the jump rate c_k as

$$c_k = \sum_{A \subset \Lambda_p^*} R_{k,A} \Psi_A,$$

where the sum is carried over all subsets A of Λ_p^* .

Lemma 3.1. *The functions $L_G \Psi_{\{j\}}$, resp. $L_G \Psi_{\{j,k\}}$, $-p \leq j \neq k \leq 0$, are polynomials of order 1, resp. of order 2, if and only if there exists constants $R_{l,\emptyset}$, $R_{l,\{m\}}$, $l, m \in \Lambda_p^*$ such that*

$$c_j(\eta) = R_{j,\emptyset} + R_{j,\{j\}} \eta_j + \sum_{k:k \neq j} R_{j,\{k\}} \eta_k (1 - 2\eta_j). \quad (3.1)$$

Proof. Fix $j \in \Lambda_p^*$. A straightforward computation shows that

$$L_G \Psi_{\{j\}} = \sum_{A \not\ni j} R_{j,A} \Psi_A - \sum_{A \ni j} (2R_{j,A} + R_{j,A \cup \{j\}}) \Psi_{A \cup \{j\}}.$$

Hence, $L_G \Psi_{\{j\}}$ is a polynomial of order 1 if and only if $R_{j,B} = R_{j,B \cup \{j\}} = 0$ for all $B \subset \Lambda_p^*$ such that $|B| \geq 2$, $j \notin B$. This proves that $L_G \Psi_{\{j\}}$ is a polynomial of order 1 if and only if condition (3.1) holds.

If the rates are given by (3.1), for all $j \neq k \in \Lambda_p^*$,

$$(L_G \Psi_{\{j\}})(\eta) = R_{j,\emptyset} (1 - 2\eta_j) - R_{j,\{j\}} \eta_j + \sum_{\ell:\ell \neq j} R_{j,\{\ell\}} \eta_\ell,$$

and

$$(L_G \Psi_{\{j,k\}})(\eta) = R_{j,\emptyset} (1 - 2\eta_j) \eta_k + R_{k,\emptyset} (1 - 2\eta_k) \eta_j - (R_{j,\{j\}} + R_{k,\{k\}}) \eta_j \eta_k$$

$$+ \sum_{\ell: \ell \neq j, k} R_{j, \{\ell\}} \eta_k \eta_\ell + \sum_{\ell: \ell \neq j, k} R_{k, \{\ell\}} \eta_j \eta_\ell ,$$

which is a polynomial of degree 2. This proves the lemma. \square

Note: Observe that at this point we do not make any assertion about the sign of the constants $R_{j, \emptyset}$, $R_{j, \{k\}}$.

The next result states that a generator L_G whose rates satisfy condition (3.1) can be written as $L_R + L_C + L_A$. Denote by \mathbb{P}_j , resp. \mathbb{N}_j , $-p \leq j \leq 0$, the subset of points $k \in \Lambda_p^* \setminus \{j\}$, such that $R_{j, \{k\}} \geq 0$, resp. $R_{j, \{k\}} < 0$.

Lemma 3.2. *The rates $c_j(\eta)$ given by (3.1) are non-negative if and only if*

$$p_j := R_{j, \emptyset} + R_{j, \{j\}} - \sum_{k \in \mathbb{P}_j} R_{j, \{k\}} \geq 0 ,$$

$$q_j := R_{j, \emptyset} + \sum_{k \in \mathbb{N}_j} R_{j, \{k\}} \geq 0 .$$

In this case, there exist non-negative rates r_j , $c_{j,k}$, $a_{j,k}$ and densities $\alpha_j \in [0, 1]$, $k \neq j \in \Lambda_p^$, such that for all $j \in \Lambda_p^*$, $\eta \in \Omega_p^*$,*

$$\begin{aligned} c_j(\eta) &= r_j [\alpha_j (1 - \eta_j) + (1 - \alpha_j) \eta_j] + \sum_{k \in \Lambda_p^*} c_{j,k} [\eta_j (1 - \eta_k) + \eta_k (1 - \eta_j)] , \\ &+ \sum_{k \in \Lambda_p^*} a_{j,k} [\eta_j \eta_k + (1 - \eta_k) (1 - \eta_j)] . \end{aligned}$$

Proof. The first assertion of the lemma is elementary and left to the reader. For $j \neq k \in \Lambda_p^*$, define

$$\begin{aligned} c_{j,k} &= R_{j, \{k\}} \mathbf{1}\{k \in \mathbb{P}_j\} \geq 0, \quad a_{j,k} = -R_{j, \{k\}} \mathbf{1}\{k \in \mathbb{N}_j\} \geq 0, \\ r_j &:= p_j + q_j \geq 0, \quad \alpha_j := \frac{q_j}{p_j + q_j} \mathbf{1}\{r_j \neq 0\} \in [0, 1] . \end{aligned}$$

It is elementary to check that the second assertion of the lemma holds with these definitions. \square

Lemma 3.3. *The Markov chain induced by the generator L_l has a unique stationary state if $\sum_{j \in \Lambda_p^*} r_j + \sum_{j, k \in \Lambda_p^*} a_{j,k} > 0$. In contrast, if $\sum_{j \in \Lambda_p^*} r_j + \sum_{j, k \in \Lambda_p^*} a_{j,k} = 0$ and $\sum_{j, k \in \Lambda_p^*} c_{j,k} > 0$, then the Markov chain induced by the generator L_l has exactly two stationary states which are the Dirac measures concentrated on the configurations with all sites occupied or all sites empty.*

Proof. Assume first that $\sum_{j \in \Lambda_p^*} r_j > 0$. Let $j \in \Lambda_p^*$ such that $r_j > 0$. If $\alpha_j > 0$, the configuration in which all sites are occupied can be reached from any configuration by moving with the stirring dynamics each empty site to j , and then filling it up with the reservoir. This proves that under this condition there exists a unique stationary state concentrated on the configurations which can be attained from the configuration in which all sites are occupied. Analogously, if $\alpha_j = 0$, the configuration in which all sites are empty can be reached from any configuration.

Suppose that $\sum_{j \in \Lambda_p^*} r_j = 0$ and $\sum_{j, k \in \Lambda_p^*} a_{j,k} > 0$. We claim that from any configuration we can reach any configuration whose total number of occupied sites is comprised between 1 and $|\Lambda_p^*| - 1 = p$. Since the stirring dynamics can move

particles and holes around, we have only to show that it is possible to increase, resp. decrease, the number of particles up to $|\Lambda_p^*| - 1$, resp. 1.

Let $k \neq j \in \Lambda_p^*$ such that $a_{j,k} > 0$. To increase the number of particles up to $|\Lambda_p^*| - 1$, move the two empty sites to j and k , and create a particle at site j . Similarly one can decrease the number of particles up to 1. This proves that under the previous assumptions there exists a unique stationary state concentrated on the set of configurations whose total number of particles is comprised between 1 and $|\Lambda_p^*| - 1$.

Assume that $\sum_{j \in \Lambda_p^*} r_j = 0$, $\sum_{j,k \in \Lambda_p^*} a_{j,k} = 0$ and $\sum_{j,k \in \Lambda_p^*} c_{j,k} > 0$. In this case, the configuration with all sites occupied and the one with all sites empty are absorbing states. Let $k \neq j \in \Lambda_p^*$ such that $c_{j,k} > 0$. If there is at least one particle, to increase the number of particles, move the empty site to j , the occupied site to k , and create a particle at site j . Similarly, we can decrease the number of particle if there is at least one empty site. This proves that in this case the set of stationary states is a pair formed by the configurations with all sites occupied and the one with all sites empty. \square

Lemma 3.4. *Suppose that $\sum_{j \in \Lambda_p^*} r_j + \sum_{j,k \in \Lambda_p^*} a_{j,k} > 0$. Then, there exists a unique solution to (2.7).*

Proof. Equation (2.6) provides a solution and guarantees existence. We turn to uniqueness. Suppose first that $\sum_{j \in \Lambda_p^*} r_j > 0$ and $\sum_{j,k \in \Lambda_p^*} a_{j,k} = 0$. In this case, the operator \mathcal{A} vanishes. Consider two solution $\rho^{(1)}, \rho^{(2)}$, and denote their difference by γ . The difference satisfies the linear equation

$$0 = -r_j \gamma(j) + (\mathcal{C}\gamma)(j) + (\mathcal{T}\gamma)(j), \quad j \in \Lambda_p^*.$$

Let π be the unique stationary state of the random walk on Λ_p^* whose generator is $\mathcal{C} + \mathcal{T}$. Multiply both sides of the equation by $\gamma(j) \pi(j)$ and sum over j to obtain that

$$0 = -\sum_{j \in \Lambda_p^*} r_j \gamma(j)^2 \pi(j) + \langle (\mathcal{C} + \mathcal{T})\gamma, \gamma \rangle,$$

where $\langle f, g \rangle$ represents the scalar product in $L^2(\pi)$. As all terms on the right-hand side are negative, the identity $\langle (\mathcal{C} + \mathcal{T})\gamma, \gamma \rangle = 0$ yields that γ is constant. Since, by hypothesis, $\sum_j r_j > 0$, $\gamma \equiv 0$, which proves the lemma.

Suppose next that $\sum_{j \in \Lambda_p^*} r_j > 0$ and $\sum_{j,k \in \Lambda_p^*} a_{j,k} > 0$. Define the rates $t_{j,k} \geq 0$, $j \neq k \in \Lambda_p^*$, so that

$$(\mathcal{T}f)(j) = \sum_{k:k \neq j} t_{j,k} [f(k) - f(j)], \quad j \in \Lambda_p^*.$$

Let $\Lambda_p^{\text{ext}} = \{-1, 1\} \times \Lambda_p^*$. Points in Λ_p^{ext} are represented by the symbol (σ, k) , $\sigma = \pm 1$, $-p \leq k \leq 0$. We extend the definition of a function $f : \Lambda_p^* \rightarrow \mathbb{R}$ to Λ_p^{ext} by setting $f(1, k) = f(k)$, $f(-1, k) = 1 - f(k)$, $k \in \Lambda_p^*$. This new function is represented by $\hat{f} : \Lambda_p^{\text{ext}} \rightarrow \mathbb{R}$.

With this notation we may rewrite equation (2.7) as

$$0 = r_{(1,j)} [\alpha_{(1,j)} - \hat{\rho}(1, j)] + (\hat{\mathcal{C}}\hat{\rho})(1, j) + (\hat{\mathcal{A}}\hat{\rho})(1, j) + (\hat{\mathcal{T}}\hat{\rho})(1, j), \quad j \in \Lambda_p^*, \quad (3.2)$$

where, $r_{(1,j)} = r_j$, $\alpha_{(1,j)} = \alpha_j$,

$$(\widehat{\mathcal{A}}\widehat{\rho})(1,j) = \sum_{k \in \Lambda_p^*} a_{j,k} [\widehat{\rho}(-1,k) - \widehat{\rho}(1,j)],$$

and $\widehat{\mathcal{C}}, \widehat{\mathcal{T}}$ are the generators of the Markov chains on Λ_p^{ext} characterized by the rates \widehat{c}, \widehat{t} given by

$$\begin{aligned} \widehat{c}[(\pm 1, j), (\pm 1, k)] &= c_{j,k}, & \widehat{c}[(\pm 1, j), (\mp 1, k)] &= 0, \\ \widehat{t}[(\pm 1, j), (\pm 1, k)] &= t_{j,k}, & \widehat{t}[(\pm 1, j), (\mp 1, k)] &= 0. \end{aligned}$$

Multiply equation (2.7) by -1 to rewrite it as

$$0 = r_{(-1,j)} [\alpha_{(-1,j)} - \widehat{\rho}(-1,j)] + (\widehat{\mathcal{C}}\widehat{\rho})(-1,j) + (\widehat{\mathcal{A}}\widehat{\rho})(-1,j) + (\widehat{\mathcal{T}}\widehat{\rho})(-1,j) \quad (3.3)$$

for any $j \in \Lambda_p^*$, where $r_{(-1,j)} = r_j$, $\alpha_{(-1,j)} = 1 - \alpha_j$, and

$$(\widehat{\mathcal{A}}\widehat{\rho})(-1,j) = \sum_{k \in \Lambda_p^*} a_{j,k} [\widehat{\rho}(1,k) - \widehat{\rho}(-1,j)].$$

Since the operator $\widehat{\mathcal{C}} + \widehat{\mathcal{A}} + \widehat{\mathcal{T}}$ defines an irreducible random walk on Λ_p^{ext} , we may proceed as in the first part of the proof to conclude that there exists a unique solution of (2.7).

Finally, suppose that $\sum_{j \in \Lambda_p^*} r_j = 0$ and $\sum_{j,k \in \Lambda_p^*} a_{j,k} > 0$. Let ρ be a solution to (2.7). Then, its extension $\widehat{\rho}$ is a solution to (3.2), (3.3). The argument presented in the first part of the proof yields that any solution of these equations is constant. Since $\widehat{\rho}(1,k) = \rho(k) = 1 - \widehat{\rho}(-1,k)$, we conclude that this constant must be $1/2$. This proves that in the case where $\sum_{j \in \Lambda_p^*} r_j = 0$, $\sum_{j,k \in \Lambda_p^*} a_{j,k} > 0$, the unique solution to (2.7) is constant equal to $1/2$. \square

Recall from (2.9) the definition of ρ_N .

Lemma 3.5. *Suppose that $\sum_{j \in \Lambda_p^*} r_j + \sum_{j,k \in \Lambda_p^*} a_{j,k} > 0$. Then, for $0 \leq k < N$,*

$$\rho_N(k) = \frac{k}{N} \beta + \frac{N-k}{N} \rho_N(0). \quad (3.4)$$

Moreover, there exists a finite constant C_0 , independent of N , such that

$$|\rho_N(k) - \rho(k)| \leq C_0/N, \quad -p \leq k \leq 0,$$

where ρ is the unique solution of (2.7).

Proof. Fix $1 \leq k < N$. As μ_N is the stationary state, $E_{\mu_N}[L_N \eta_k] = 0$. Hence, if we set $\rho_N(N) = \beta$, $(\Delta_N \rho_N)(k) := \rho_N(k-1) + \rho_N(k+1) - 2\rho_N(k) = 0$. In particular, ρ_N solves the discrete difference equation

$$(\Delta_N \rho_N)(k) = 0, \quad 1 \leq k < N, \quad \rho_N(N) = \beta, \quad \rho_N(0) = \rho_N(0),$$

whose unique solution is given by (3.4). This proves the first assertion of the lemma.

We turn to the second statement. It is clear that $\rho_N(j)$ fulfills (2.7) for $-p \leq j < 0$. For $j = 0$ the equation is different due to the stirring dynamics between 0 and 1 induced by the generator $L_{0,1}$. We have that

$$0 = r_0 [\alpha_0 - \rho_N(0)] + (\mathcal{C}\rho_N)(0) + (\mathcal{A}\rho_N)(0) + (\Delta_N \rho_N)(0).$$

By (3.4), we may replace $\rho_N(1)$ by $[1 - (1/N)]\rho_N(0) + (1/N)\beta$, and the previous equation becomes

$$0 = r_0 [\alpha_0 - \rho_N(0)] + (\mathcal{C}\rho_N)(0) + (\mathcal{A}\rho_N)(0) + (\mathcal{T}\rho_N)(0) + \frac{1}{N} [\beta - \rho_N(0)]. \quad (3.5)$$

This equation corresponds to (2.7) with $r'_0 = r_0 + (1/N)$ and $\alpha'_0 = (\alpha_0 r_0 + \beta/N)/[r_0 + (1/N)]$.

By Lemma 3.4, equation (2.7) for $j \neq 0$ and (3.5) for $j = 0$ has a unique solution. Let $\gamma_N = \rho_N - \rho$, where ρ is the solution of (2.7). γ_N satisfies

$$0 = \frac{1}{N} [\beta - \rho_N(0)] \delta_{0,j} - r_j \gamma_N(j) + (\mathcal{C}\gamma_N)(j) + (\mathcal{A}\gamma_N)(j) + (\mathcal{T}\gamma_N)(j),$$

where $\delta_{0,j}$ is equal to 1 if $j = 0$ and is equal to 0 otherwise.

We complete the proof in the case $\mathcal{A} = 0$. The other cases can be handled by increasing the space, as in the proof of Lemma 3.4. Denote by π the stationary state of the generator $\mathcal{C} + \mathcal{T}$. Multiply both sides of the previous equation by $\pi(j)\gamma_N(j)$ and sum over j to obtain that

$$\sum_{j \in \Lambda_p^*} r_j \gamma_N(j)^2 \pi(j) + \langle -(\mathcal{C} + \mathcal{T})\gamma_N, \gamma_N \rangle = \theta_N \gamma_N(0) \pi(0),$$

where $\theta_N = (1/N) [\beta - \rho_N(0)]$. Let $k \in \Lambda_p^*$ such that $r_k > 0$. Such k exists by assumption. Rewrite $\gamma_N(0)$ as $\sum_{k < j \leq 0} [\gamma_N(j) - \gamma_N(j-1)] + \gamma_N(k)$ and use Young's inequality to obtain that there exists a finite constant C_0 , depending only on p , π and on the rates $c_{j,k}$, r_j such that

$$\theta_N \gamma_N(0) \pi(0) \leq (1/2) r_k \gamma_N(k)^2 \pi(k) + (1/2) \langle -(\mathcal{C} + \mathcal{T})\gamma_N, \gamma_N \rangle + C_0 \theta_N^2.$$

Here and throughout the article, the value of the constant C_0 may change from line to line. The two previous displayed equations and the fact that $|\beta - \rho_N(0)| \leq 1$ yield that

$$\sum_{j \in \Lambda_p^*} r_j \gamma_N(j)^2 \pi(j) + \langle -(\mathcal{C} + \mathcal{T})\gamma_N, \gamma_N \rangle \leq \frac{C_0}{N^2}.$$

In particular, $\gamma_N(k)^2 \leq C_0/N^2$ and $[\gamma_N(j+1) - \gamma_N(j)]^2 \leq C_0/N^2$ for $-p \leq j < 0$. This completes the proof of the lemma. \square

4. PROOF OF THEOREM 2.1: TWO POINT FUNCTIONS.

We examine in this section the two-point correlation function under the stationary state μ_N . Denote by \mathbb{D}_N the discrete simplex defined by

$$\mathbb{D}_N = \{(j, k) : -p \leq j < k \leq N-1\} \quad \text{and set} \quad \Xi_N = \{-1, 1\} \times \mathbb{D}_N.$$

Let

$$\bar{\eta}_m = 1 - \eta_m, \quad \bar{\rho}_N(m) = 1 - \rho_N(m), \quad m \in \Lambda_{N,p},$$

and define the two-point correlation function $\varphi_N(\sigma, j, k)$, $(\sigma, j, k) \in \Xi_N$, by

$$\begin{aligned} \varphi_N(1, j, k) &= E_{\mu_N} [\{\eta_j - \rho_N(j)\} \{\eta_k - \rho_N(k)\}], \\ \varphi_N(-1, j, k) &= E_{\mu_N} [\{\bar{\eta}_j - \bar{\rho}_N(j)\} \{\eta_k - \rho_N(k)\}]. \end{aligned} \quad (4.1)$$

Note that $\varphi_N(-1, j, k) = -\varphi_N(1, j, k)$. The identity $E_{\mu_N}[L_N\{\eta_j - \rho_N(j)\} \{\eta_k - \rho_N(k)\}] = 0$ provides a set of equations for φ_N . Their exact form requires some notation.

Denote by $\mathcal{L}_N^{\text{rw}}$ the generator of the symmetric, nearest-neighbor random walk on \mathbb{D}_N . This generator is defined by the next two sets of equations. If $k - j > 1$,

$$(\mathcal{L}_N^{\text{rw}}\phi)(j, k) = \begin{cases} (\Delta\phi)(j, k) & \text{if } j > -p, k < N - 1, \\ (\nabla_1^+\phi)(-p, k) + (\Delta_2\phi)(-p, k) & \text{if } j = -p, k < N - 1, \\ (\Delta_1\phi)(j, N - 1) + (\nabla_2^-\phi)(j, N - 1) & \text{if } j > -p, k = N - 1, \\ (\nabla_1^+\phi)(-p, N - 1) + (\nabla_2^-\phi)(-p, N - 1) & \text{if } j = -p, k = N - 1, \end{cases}$$

while for $-p < k < N - 2$,

$$\begin{aligned} (\mathcal{L}_N^{\text{rw}}\phi)(k, k + 1) &= (\nabla_1^-\phi)(k, k + 1) + (\nabla_2^+\phi)(k, k + 1), \\ (\mathcal{L}_N^{\text{rw}}\phi)(-p, -p + 1) &= (\nabla_2^+\phi)(-p, -p + 1), \\ (\mathcal{L}_N^{\text{rw}}\phi)(N - 2, N - 1) &= (\nabla_1^-\phi)(N - 2, N - 1). \end{aligned}$$

In these formulae, ∇_i^\pm , resp. Δ_i , represents the discrete gradients, resp. Laplacians, given by

$$\begin{aligned} (\nabla_1^\pm\phi)(j, k) &= \phi(j \pm 1, k) - \phi(j, k), \quad (\nabla_2^\pm\phi)(j, k) = \phi(j, k \pm 1) - \phi(j, k), \\ (\Delta_1\phi)(j, k) &= \phi(j - 1, k) + \phi(j + 1, k) - 2\phi(j, k), \\ (\Delta_2\phi)(j, k) &= \phi(j, k - 1) + \phi(j, k + 1) - 2\phi(j, k), \\ (\Delta\phi)(j, k) &= (\Delta_1\phi)(j, k) + (\Delta_2\phi)(j, k). \end{aligned}$$

Let L_N^{ex} be the generator given by $L_N^{\text{ex}} = L_S + L_{0,1} + L_{b,N}$. A straightforward computation yields that for $(j, k) \in \mathbb{D}_N$,

$$E_{\mu_N} [L_N^{\text{ex}} \{\eta_j - \rho_N(j)\} \{\eta_k - \rho_N(k)\}] = (\mathcal{L}_N^{\text{rw}}\varphi_N)(1, j, k) + F_N(1, j, k),$$

where it is understood that the generator $\mathcal{L}_N^{\text{rw}}$ acts on the last two coordinates keeping the first one fixed, and

$$F_N(\sigma, j, k) = -\sigma [\rho_N(j + 1) - \rho_N(j)]^2 \mathbf{1}\{k = j + 1\}. \quad (4.2)$$

Similarly,

$$E_{\mu_N} [L_N^{\text{ex}} \{\bar{\eta}_j - \bar{\rho}_N(j)\} \{\eta_k - \rho_N(k)\}] = (\mathcal{L}_N^{\text{rw}}\varphi_N)(-1, j, k) + F_N(-1, j, k).$$

For the next generators, we do not repeat the computation of the action of the generator on the product $\{\bar{\eta}_j - \bar{\rho}_N(j)\} \{\eta_k - \rho_N(k)\}$ because it can be inferred from the action on $\{\eta_j - \rho_N(j)\} \{\eta_k - \rho_N(k)\}$.

We turn to the remaining generators. Extend the definition of the rates $r_j, c_{j,k}$ and $a_{j,k}$ to $\Lambda_{N,p}$ by setting

$$r_j = c_{j,k} = a_{j,k} = 0 \quad \text{if } j \notin \Lambda_p^* \text{ or } k \notin \Lambda_p^*.$$

To present simple expressions for the equations satisfied by the two-point correlation function, we add cemetery points to the state space Ξ_N . Let $\bar{\Xi}_N = \Xi_N \cup \partial\Xi_N$, where

$$\begin{aligned} \partial\Xi_N &= \{(\sigma, k) : \sigma = \pm 1, -p \leq k < N\} \cup \{(\sigma, k, k) : \sigma = \pm 1, -p \leq k \leq 0\} \\ &\cup \{(\sigma, k, N) : \sigma = \pm 1, -p \leq k < N - 1\} \end{aligned} \quad (4.3)$$

is the set of absorbing points.

A straightforward computation yields that for $(j, k) \in \mathbb{D}_N$,

$$E_{\mu_N} [L_R \{\eta_j - \rho_N(j)\} \{\eta_k - \rho_N(k)\}] = (\mathcal{L}_R^\dagger\varphi_N)(1, j, k),$$

where

$$(\mathcal{L}_R^\dagger \phi)(\sigma, j, k) = r_j [\varphi_N(\sigma, k) - \varphi_N(\sigma, j, k)] + r_k [\varphi_N(\sigma, j) - \varphi_N(\sigma, j, k)]$$

provided we set

$$\varphi_N(\sigma, m) = b_N(\sigma, m) := 0, \quad -p \leq m < N, \quad \sigma = \pm 1. \quad (4.4)$$

Similarly, an elementary computation yields that for $(j, k) \in \mathbb{D}_N$,

$$E_{\mu_N} [L_{r,N} \{\eta_j - \rho_N(j)\} \{\eta_k - \rho_N(k)\}] = (\mathcal{L}_{r,N}^\dagger \varphi_N)(1, j, k),$$

where

$$(\mathcal{L}_{r,N}^\dagger \varphi_N)(\sigma, j, k) = \mathbf{1}\{k = N - 1\} [\varphi_N(\sigma, j, N) - \varphi_N(\sigma, j, k)],$$

provided we set

$$\varphi_N(\sigma, m, N) = b_N(\sigma, m, N) := 0, \quad -p \leq m \leq N - 2, \quad \sigma = \pm 1. \quad (4.5)$$

We turn to the generator L_C . An elementary computation yields that for $(j, k) \in \mathbb{D}_N$,

$$E_{\mu_N} [L_C \{\eta_j - \rho_N(j)\} \{\eta_k - \rho_N(k)\}] = (\mathcal{L}_C^\dagger \varphi_N)(1, j, k),$$

where

$$(\mathcal{L}_C^\dagger \phi)(\sigma, j, k) = \sum_{m:m \neq j} c_{j,m} \{\phi(\sigma, m, k) - \phi(\sigma, j, k)\} + \sum_{m:m \neq k} c_{k,m} \{\phi(\sigma, j, m) - \phi(\sigma, j, k)\},$$

provided we set

$$\varphi_N(\sigma, m, m) = b_N(\sigma, m, m) := \sigma \rho_N(m) [1 - \rho_N(m)], \quad -p \leq m \leq 0. \quad (4.6)$$

Finally, we claim that for $(j, k) \in \mathbb{D}_N$,

$$E_{\mu_N} [L_A \{\eta_j - \rho_N(j)\} \{\eta_k - \rho_N(k)\}] = (\mathcal{L}_A^\dagger \varphi_N)(1, j, k),$$

where

$$(\mathcal{L}_A^\dagger \phi)(\sigma, j, k) = \sum_{m:m \neq j} a_{j,m} \{\phi(-\sigma, m, k) - \phi(\sigma, j, k)\} + \sum_{m:m \neq k} a_{k,m} \{\phi(-\sigma, j, m) - \phi(\sigma, j, k)\},$$

and $\varphi_N(\sigma, k, k)$ is given by (4.6). Hence, the generator \mathcal{L}_A^\dagger acts exactly as \mathcal{L}_C^\dagger , but it flips the value of the first coordinate. Note that it is the only generator which changes the value of the first coordinate.

Let \mathcal{L}_N^\dagger be the generator on Ξ_N given by

$$\mathcal{L}_N^\dagger = \mathcal{L}_N^{\text{rw}} + \mathcal{L}_R^\dagger + \mathcal{L}_{r,N}^\dagger + \mathcal{L}_C^\dagger + \mathcal{L}_A^\dagger.$$

If $\sum_j \sum_{j,k} a_{j,k} = 0$, the generator \mathcal{L}_A^\dagger vanishes, the first coordinate is kept constant by the dynamics and we do not need to introduce the variable σ . Note that the points in $\partial \Xi_N$ are absorbing points.

As $E_{\mu_N} [L_N \{\eta_j - \rho_N(j)\} \{\eta_k - \rho_N(k)\}] = 0$, the previous computations yield that the two-point correlation function φ_N introduced in (4.1) solves

$$\begin{cases} (\mathcal{L}_N^\dagger \psi_N)(\sigma, j, k) + F_N(\sigma, j, k) = 0, & (\sigma, j, k) \in \Xi_N, \\ \psi_N(\sigma, j, k) = b_N(\sigma, j, k), & (\sigma, j, k) \in \partial \Xi_N, \end{cases} \quad (4.7)$$

where F_N and b_N are the functions defined in (4.2), (4.4), (4.5), (4.6).

As \mathcal{L}_N^\dagger is a generator, (4.7) admits a unique solution [on the set $\{(1, j, k) : (j, k) \in \mathbb{D}_N\}$ if \mathcal{L}_A^\dagger vanishes]. This solution can be represented in terms of the Markov chain induced by the generator \mathcal{L}_N^\dagger .

Denote by $\varphi_N^{(1)}$, resp. $\varphi_N^{(2)}$, the solution of (4.7) with $b_N = 0$, resp. $F_N = 0$. It is clear that $\varphi_N = \varphi_N^{(1)} + \varphi_N^{(2)}$. Denote by $X_N(t)$ the continuous-time Markov chain on $\bar{\Xi}_N$ associated to the generator \mathcal{L}_N^\dagger . Let $\mathbf{P}_{(\sigma, j, k)}$ be the distribution of the chain X_N starting from (σ, j, k) . Expectation with respect to $\mathbf{P}_{(\sigma, j, k)}$ is represented by $\mathbf{E}_{(\sigma, j, k)}$.

Let H_N be the hitting time of the boundary $\partial \Xi_N$:

$$H_N = \inf \{t \geq 0 : X_N(t) \in \partial \Xi_N\}.$$

It is well known (cf. [7, Theorem 6.5.1] in the continuous case) that

$$\varphi_N^{(1)}(\sigma, j, k) = \mathbf{E}_{(\sigma, j, k)} \left[\int_0^{H_N} F_N(X_N(s)) ds \right].$$

It is also well known that

$$\varphi_N^{(2)}(\sigma, j, k) = \mathbf{E}_{(\sigma, j, k)} [b_N(X_N(H_N))].$$

To estimate $\varphi_N^{(1)}$ and $\varphi_N^{(2)}$ we need to show that the process $X_N(t)$ attains the boundary $\partial \Xi_N$ at the set $\{(\sigma, k, k) : \sigma = \pm 1, -p \leq k \leq 0\}$ with small probability. This is the content of the next two lemmata.

For a subset A of $\bar{\Xi}_N$, denote by $H(A)$, resp. $H^+(A)$, the hitting time of the set A , resp. the return time to the set A :

$$H(A) = \inf \{t \geq 0 : X_N(t) \in A\}, \quad H^+(A) = \inf \{t \geq \tau_1 : X_N(t) \in A\},$$

where τ_1 represents the time of the first jump: $\tau_1 = \inf \{s > 0 : X_N(s) \neq X_N(0)\}$.

The next lemma, illustrated in Figure 1, translates to the present model the fact that starting from $(1, 0)$ the two-dimensional, nearest-neighbor, symmetric random walk hits the line $\{(0, k) : k \in \mathbb{Z}\}$ at a distance n or more from the origin with a probability less than C/n .

Let $\widehat{\mathbf{Q}}_{(l, m)}$ be the law of such a random walk evolving on \mathbb{Z}^2 starting from (l, m) . Denote by $B_r(l, m)$ the ball of radius $r > 0$ and center $(l, m) \in \mathbb{Z}^2$, and by \mathbb{L} the segment $\{(\sigma, 0, a) : \sigma = \pm 1, 1 \leq a < N\}$. Represent the coordinates of $X_N(t)$ by $(\sigma_N(t), X_N^1(t), X_N^2(t))$.

Lemma 4.1. *Let $p' = p + 1$. There exists a finite constant C_0 such that for all n ,*

$$\max_{\sigma = \pm 1} \max_{l, m} \mathbf{P}_{(\sigma, l, m)} [H(\mathbb{L}) = \infty \text{ or } X_N^2(H(\mathbb{L})) \leq m - p'n] \leq \frac{C_0}{n},$$

where the maximum is carried over all pairs (l, m) such that $1 \leq l \leq p'$, $\{(a, b) \in B_{p'n}(0, m) : a \geq 0\} \subset \mathbb{D}_N^0 = \{(a, b) \in \mathbb{D}_N : a \geq 0\}$.

Proof. Let $\mathbb{L}_r = \{(0, l) : -r \leq l \leq r\}$. By [10, Proposition 2.4.5], there exists a finite constant C_0 such that for all $n \geq 1$,

$$\widehat{\mathbf{Q}}_{(1, 0)} [H(B_n(0, 0)^c) < H(\mathbb{L}_n)] \leq \frac{C_0}{n}.$$

Let $\mathbb{L}_r(l, m) = \{(\sigma, l, a) : \sigma = \pm 1, m - r \leq a \leq m + r\}$. By the previous displayed equation, if $\mathbb{L}_n(l, m)$ is contained in \mathbb{D}_N^0 ,

$$\mathbf{P}_{(\sigma, l+1, m)} [H(B_n(l, m)^c) < H(\mathbb{L}_n(l, m))] \leq \frac{C_0}{n}.$$

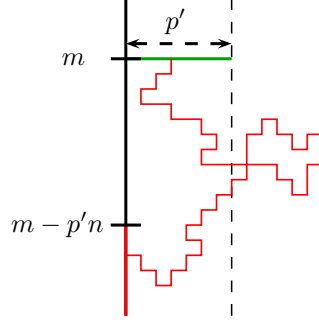


FIGURE 1. Lemma 4.1 states that a random walk (red trajectory) started from the green segment has a probability at most of order $1/n$ of hitting \mathbb{L} in the red half-line.

Iterating this estimate i times yields that

$$\mathbf{P}_{(\sigma, l+i, m)} [H(B_{in}(l, m))^{\mathbb{G}} < H(\mathbb{L}_{in}(l, m))] \leq \frac{C_0^i}{n}$$

provided all sets appearing in this formula are contained in \mathbb{D}_N^0 . The assertion of the lemma follows from this estimate and the following observation:

$$\{H(\mathbb{L}) = \infty \text{ or } X_N^2(H(\mathbb{L})) \leq m - p'n\} \subseteq \{H(B_{p'n}(0, m))^{\mathbb{G}} < H(\mathbb{L}_{p'n}(0, m))\}.$$

□

The next lemma presents the main estimate needed in the proof of the bounds of the two-point correlation functions. Recall from (4.3) that we denote by (σ, k) , (σ, k, N) some cemetery points. Let

$$\Sigma = \{(\sigma, l, 0) : \sigma = \pm 1, -p \leq l < 0\},$$

$$\partial_N = \{(\sigma, k) : \sigma = \pm 1, -p \leq k < N\} \cup \{(\sigma, k, N) : \sigma = \pm 1, -p \leq k < N-1\}.$$

Lemma 4.2. *For all $\delta > 0$,*

$$\lim_{N \rightarrow \infty} \max_{\substack{(j, k) \in \mathbb{D}_N \\ j > \delta N}} \mathbf{P}_{(1, j, k)} [H(\Sigma) < H(\partial_N)] = 0.$$

Proof. Fix $\delta > 0$ and $(j, k) \in \mathbb{D}_N$ such that $j > \delta N$. Let

$$\partial_N^0 = \{(\sigma, 0, m) : \sigma = \pm 1, 0 < m < N\} \cup \{(\sigma, k, N) : \sigma = \pm 1, -p \leq k < N-1\},$$

and set $\tau = H(\partial_N^0)$. Clearly, $\tau < H(\Sigma)$. Hence, by the strong Markov property, the probability appearing in the statement of the lemma is equal to

$$\mathbf{E}_{(1, j, k)} \left[\mathbf{P}_{X_N(\tau)} [H(\Sigma) < H(\partial_N)] \right]. \quad (4.8)$$

Up to time τ , the process X_N evolves as a symmetric random walk on \mathbb{D}_N

Let ℓ_N be a sequence such that $\ell_N \ll N$. We claim that for all $\delta > 0$,

$$\lim_{N \rightarrow \infty} \max_{(l, m)} \mathbf{P}_{(1, l, m)} [X_N^2(\tau) \leq \ell_N] = 0, \quad (4.9)$$

where the maximum is carried out over all pairs $(l, m) \in \mathbb{D}_N$ such that $l > \delta N$. The proof of this statement relies on the explicit form of the harmonic function for a 2-dimensional Brownian motion.

Up to time τ , the process $Y_N(t) = (X_N^1(t), X_N^2(t))$ evolves on the set $\Delta_N = \{(a, b) : 0 \leq a < b \leq N\}$. Let $\square_N = \{0, \dots, N-1\} \times \{1, \dots, N\}$. Denote by $Z_N(t) = (Z_N^1(t), Z_N^2(t))$ the random walk on \square_N which jumps from a point to any of its neighbors at rate 1. Let $\Phi_N : \square_N \rightarrow \Delta_N$ the projection defined by $\Phi_N(a, b) = (a, b)$ if $(a, b) \in \Delta_N$, and $\Phi_N(a, b) = (b-1, a+1)$ otherwise. The process $\Phi_N(Z_N(t))$ does not evolve as $Y_N(t)$ because the jumps of $\Phi_N(Z_N(t))$ on the diagonal $\{(d, d+1) : 0 \leq d < N\}$ are speeded-up by 2, but the sequence of sites visited by both processes has the same law. Therefore,

$$\mathbf{P}_{(1,l,m)}[X_N^2(\tau) \leq \ell_N] = \mathbf{Q}_{(l,m)}[Z_N(\hat{\tau}) \in \angle_N],$$

where $\mathbf{Q}_{(l,m)}$ represents the law of the process Z_N starting from (l, m) , $\hat{\tau}$ the hitting time of the boundary of \square_N and \angle_N the set $\{(0, a) : 1 \leq a \leq \ell_N\} \cup \{(b, 1) : 0 \leq b \leq \ell_N - 1\}$.

Denote by $B(r) \subset \mathbb{R}^2$, $r > 0$, the ball of radius r centered at the origin. In the event $\{Z_N(\hat{\tau}) \in \angle_N\}$, the process Z_N hits the ball of radius ℓ_N centered at the origin before reaching the ball of radius $2N$ centered at the origin: $\{Z_N(\hat{\tau}) \in \angle_N\} \subset \{H(B(\ell_N)) < H(B(2N))\}$, so that

$$\mathbf{Q}_{(l,m)}[Z_N(\hat{\tau}) \in \angle_N] \leq \widehat{\mathbf{Q}}_{(l,m)}[H(B(\ell_N)) < H(B(2N))].$$

By [10, Exercice 1.6.8], this later quantity is bounded by

$$\frac{\log 2N - \log |(l, m)| + C\ell_N^{-1}}{\log 2N - \log \ell_N}$$

for some finite constant independent of N . This proves (4.9) because $|(l, m)| \geq \delta N$ and $\ell_N \ll N$.

We return to (4.8). If $X_N(\tau) \in \partial_N$, the probability vanishes. We may therefore insert inside the expectation the indicator of the set $X_N(\tau) \notin \partial_N$. It is also clear that $\sigma_N(t)$ does not change before time τ . Hence, by (4.9), (4.8) is bounded by

$$\begin{aligned} & \mathbf{E}_{(1,j,k)} \left[\mathbf{1}\{X_N(\tau) \in \mathbb{L}^+(\ell_N)\} \mathbf{P}_{X_N(\tau)}[H(\Sigma) < H(\partial_N)] \right] + o_N(1) \\ & \leq \max_{m \geq \ell_N} \mathbf{P}_{(1,0,m)}[H(\Sigma) < H(\partial_N)] + o_N(1), \end{aligned}$$

where $\mathbb{L}^+(r) = \{(\sigma, 0, l) : \sigma = \pm 1, l \geq r\}$, $o_N(1)$ converges to 0 as $N \rightarrow \infty$, uniformly over all $(j, k) \in \mathbb{D}_N$, $j > \delta N$, and ℓ_N is a sequence such that $\ell_N \ll N$. Hence, up to this point, we proved that

$$\max_{\substack{(j,k) \in \mathbb{D}_N \\ j > \delta N}} \mathbf{P}_{(1,j,k)}[H(\Sigma) < H(\partial_N)] \leq \max_{m \geq \ell_N} \mathbf{P}_{(1,0,m)}[H(\Sigma) < H(\partial_N)] + o_N(1), \quad (4.10)$$

where $o_N(1)$ converges to 0 as $N \rightarrow \infty$, and ℓ_N is a sequence such that $\ell_N \ll N$.

It remains to estimate the probability appearing in the previous formula. If $m > p'$, starting from $(1, 0, m)$, in p' jumps the process $X_N(t)$ can not hit Σ . Hence, if $\tau(k)$ stands for the time of the k -th jump, by the strong Markov property,

$$\begin{aligned} \mathbf{P}_{(1,0,m)}[H(\Sigma) < H(\partial_N)] &= \mathbf{P}_{(1,0,m)}[H(\partial_N) > \tau(p'), H(\Sigma) < H(\partial_N)] \\ &= \mathbf{E}_{(1,0,m)} \left[\mathbf{1}\{H(\partial_N) > \tau(p')\} \mathbf{P}_{X_N(\tau(p'))}[H(\Sigma) < H(\partial_N)] \right]. \end{aligned}$$

Let $\varrho = \mathbf{P}_{(1,0,m)}[H(\partial_N) > \tau(p')] = \mathbf{P}_{(-1,0,m)}[H(\partial_N) > \tau(p')]$. Note that this quantity does not depend on m in the set $\{(\sigma, 0, b) : \sigma = \pm 1, b > p'\}$. Moreover, as

$\sum_j r_j > 0$, $\varrho < 1$. With this notation, the previous expression is less than or equal to

$$\varrho \max_{\sigma=\pm 1} \max_{a,b} \mathbf{P}_{(\sigma,a,b)} [H(\Sigma) < H(\partial_N)],$$

where the maximum is carried over all (a, b) which can be attained in p' jumps from $(0, m)$. This set is contained in the set $\{(c, d) : -p \leq c \leq p', m - p' \leq d \leq m + p'\}$.

Recall the definition of the set \mathbb{L} introduced just before the statement of Lemma 4.1. If $a \geq 1$, the process $X_N(t)$ hits the set \mathbb{L} before the set Σ . Hence, by Lemma 4.1, if q_N is an increasing sequence to be defined later, by the strong Markov property, for $1 \leq a \leq p'$, $b \gg q_N$,

$$\begin{aligned} & \mathbf{P}_{(\sigma,a,b)} [H(\Sigma) < H(\partial_N)] \\ & \leq \frac{C_0}{q_N} + \mathbf{P}_{(\sigma,a,b)} [X_N^2(H(\mathbb{L})) \geq b - p'q_N, H(\Sigma) < H(\partial_N)] \\ & \leq \frac{C_0}{q_N} + \max_{b' \geq b - p'q_N} \mathbf{P}_{(\sigma,0,b')} [H(\Sigma) < H(\partial_N)]. \end{aligned}$$

On the other hand, if $a \leq -1$, let $\mathbb{C}_d = \{(\sigma, c, d) : \sigma = \pm 1, -p \leq c < 0\}$. In this case, starting from (a, b) , in p' jumps the process $X_N(t)$ may hit the set \mathbb{L} . Hence, by the strong Markov property, for $a < 0$, $b > np'$, $\mathbf{P}_{(\sigma,a,b)} [H(\mathbb{C}_{b-np'}) < H(\mathbb{L}) \wedge H(\partial_N)] \leq \varrho_1^n$ for some $\varrho_1 < 1$. Therefore, by the strong Markov property, for $a < 0$ and $b \gg q_N$,

$$\begin{aligned} & \mathbf{P}_{(\sigma,a,b)} [H(\Sigma) < H(\partial_N)] \\ & \leq \mathbf{P}_{(\sigma,a,b)} [H(\mathbb{L}) \wedge H(\partial_N) < H(\mathbb{C}_{b-p'q_N}), H(\Sigma) < H(\partial_N)] + \varrho_1^{q_N} \\ & \leq \max_{\sigma'=\pm 1} \max_{b' \geq b - p'q_N} \mathbf{P}_{(\sigma',0,b')} [H(\Sigma) < H(\partial_N)] + \varrho_1^{q_N}. \end{aligned}$$

Let

$$T_N(b) = \max_{\sigma=\pm 1} \max_{c \geq b} \mathbf{P}_{(\sigma,0,c)} [H(\Sigma) < H(\partial_N)].$$

Note that the first term appearing on the right-hand side of (4.10) is $T_N(\ell_N)$ because the probability does not depend on the value of σ . By the previous arguments, there exists a finite constant C_0 such that for all $b \gg q_N$,

$$T_N(b) \leq \varrho \left\{ T_N(b - p'q_N) + \frac{C_0}{q_N} \right\}$$

because $\varrho_1^q \leq 1/q$ for all q large enough. Iterating this inequality r_N times, we get that for all $b \gg q_N r_N$,

$$T_N(b) \leq \frac{C_0}{q_N} \{\varrho + \dots + \varrho^{r_N}\} + \varrho^{r_N} \leq \frac{\varrho}{1 - \varrho} \frac{C_0}{q_N} + \varrho^{r_N}.$$

In view of (4.10) and of the previous estimate, to complete the proof of the lemma, it remains to choose sequences q_N, r_N such that $q_N \rightarrow \infty, r_N \rightarrow \infty, r_N q_N \ll \ell_N$. \square

Lemma 4.3. *Assume that $\sum_j r_j > 0$. Then, for every $\delta > 0$,*

$$\lim_{N \rightarrow \infty} \max_{\substack{(j,k) \in \mathbb{D}_N \\ j > \delta N}} |\varphi_N^{(1)}(1, j, k)| = 0.$$

Proof. Fix $(j, k) \in \mathbb{D}_N$ such that $0 < j < k$. Denote by D_N the diagonal, $D_N = \{(\sigma, l, l+1) : \sigma = \pm 1, -p \leq l < N-1\}$, and by $D_{N,p}$ its restriction to Λ_p^* ,

$D_{N,p} = \{(\sigma, l, l+1) : \sigma = \pm 1, -p \leq l \leq 0\}$. By Lemma 3.5, there exists a finite constant C_0 such that for all $(l, m) \in \mathbb{D}_N$,

$$|F_N(\sigma, l, m)| \leq \frac{C_0}{N^2} \mathbf{1}\{D_N\}(\sigma, l, m) + C_0 \mathbf{1}\{D_{N,p}\}(\sigma, l, m).$$

Therefore, recalling that H_N was defined as the hitting time of the boundary $\partial\Xi_N$,

$$\begin{aligned} |\varphi_N^{(1)}(1, j, k)| &\leq \frac{C_0}{N^2} \mathbf{E}_{(1,j,k)} \left[\int_0^{H_N} \mathbf{1}\{D_N \setminus D_{N,p}\}(X_N(s)) ds \right] \\ &\quad + C_0 \mathbf{E}_{(1,j,k)} \left[\int_0^{H_N} \mathbf{1}\{D_{N,p}\}(X_N(s)) ds \right]. \end{aligned} \quad (4.11)$$

We claim that there exists a finite constant C_0 such that

$$\max_{\sigma=\pm 1} \max_{\substack{(j,k) \in \mathbb{D}_N \\ 0 < j < k}} \mathbf{E}_{(\sigma,j,k)} \left[\int_0^{H_N} \mathbf{1}\{D_N \setminus D_{N,p}\}(X_N(s)) ds \right] \leq C_0 N. \quad (4.12)$$

To bound this expectation, let $R_N = \{(\sigma, 0, m) : \sigma = \pm 1, 2 \leq m \leq N-1\}$, and denote by G_N the hitting time of the set $R_N \cup \partial\Xi_N$. Note that starting from (j, k) , $0 < j < k$, only the component $\{(\sigma, l, N) : -p \leq l < N-1\}$ of the set $\partial\Xi_N$ can be attained before the set R_N . Moreover, before G_N the process $X_N(t)$ behaves as a symmetric random walk.

Rewrite the expectation in (4.12) as

$$\mathbf{E}_{(\sigma,j,k)} \left[\int_0^{G_N} \mathbf{1}\{D_N \setminus D_{N,p}\}(X_N(s)) ds \right] + \mathbf{E}_{(\sigma,j,k)} \left[\int_{G_N}^{H_N} \mathbf{1}\{D_N \setminus D_{N,p}\}(X_N(s)) ds \right]. \quad (4.13)$$

Since before time G_N the process $X_N(t)$ evolves as a symmetric random walk, the first expectation can be computed. It is equal to $j(N-k)/(N-1) \leq C_0 N$. By the strong Markov property, the second expectation is bounded above by

$$\max_{2 \leq m < N} \mathbf{E}_{(\sigma,0,m)} \left[\int_0^{H_N} \mathbf{1}\{D_N \setminus D_{N,p}\}(X_N(s)) ds \right].$$

Denote by Υ_N the previous expression and by G_N^+ the return time to $R_N \cup \partial\Xi_N$. By the strong Markov property, the previous expectation is bounded above by

$$\mathbf{E}_{(\sigma,0,m)} \left[\int_0^{G_N^+} \mathbf{1}\{D_N \setminus D_{N,p}\}(X_N(s)) ds \right] + \Upsilon_N \max_{0 \leq m' < N-1} \mathbf{P}_{(\sigma,0,m')} [G_N^+ < H_N].$$

The first term vanishes unless the first jump of $X_N(s)$ is to $(\sigma, 1, m)$. Suppose that this happens. Starting from $(\sigma, 1, m)$, up to time G_N^+ , $X_N(s)$ behaves as a symmetric random walk. Hence, by explicit formula for the first term in (4.13), the expectation is equal to $(N-m)/(N-1) \leq 1$. Hence,

$$\Upsilon_N \leq \max_{0 \leq m' < N-1} \frac{1}{\mathbf{P}_{(\sigma,0,m')} [H_N < G_N^+]}. \quad (4.14)$$

As $\sum_j r_j > 0$, $\mathbf{P}_{(\sigma,0,m')} [H_N < G_N^+]$ is bounded below by the probability that the process jumps to a site (σ, l, m') such that $r_l > 0$ and then hits the set $\partial\Xi_N$. Hence, there exists a positive constant c_0 such that $\mathbf{P}_{(\sigma,0,m')} [H_N < G_N^+] \geq c_0$ for all $2 \leq m' \leq N-1$. This proves that $\Upsilon_N \leq C_0$. Assertion (4.12) follows from this bound and the estimate for the first term in (4.13).

We turn to the second term in (4.11). Recall the notation introduced just before Lemma 4.2. Since the integrand vanishes before hitting the set $D_{N,p}$ and since the set Σ is attained before $D_{N,p}$, for $j > \delta N$

$$\begin{aligned} & \mathbf{E}_{(1,j,k)} \left[\int_0^{H_N} \mathbf{1}\{D_{N,p}\}(X_N(s)) ds \right] \\ &= \mathbf{E}_{(1,j,k)} \left[\mathbf{1}\{H(\Sigma) < H(\partial_N)\} \int_{H(D_{N,p})}^{H_N} \mathbf{1}\{D_{N,p}\}(X_N(s)) ds \right]. \end{aligned}$$

Applying the strong Markov property twice, we bound this expression by

$$\mathbf{P}_{(1,j,k)} [H(\Sigma) < H(\partial_N)] \max_{(\sigma,a,b) \in D_{N,p}} \mathbf{E}_{(\sigma,a,b)} \left[\int_0^{H_N} \mathbf{1}\{D_{N,p}\}(X_N(s)) ds \right].$$

By Lemma 4.2 the first term vanishes as $N \rightarrow \infty$, uniformly over $(j,k) \in \mathbb{D}_N$, $j > \delta N$.

It remains to show that there exists a finite constant C_0 such that

$$\max_{(\sigma,j,k) \in D_{N,p}} \mathbf{E}_{(\sigma,j,k)} \left[\int_0^{H_N} \mathbf{1}\{D_{N,p}\}(X_N(s)) ds \right] \leq C_0. \quad (4.14)$$

Denote this expression by Υ_N , and by J_N^+ the return time to $D_{N,p}$. For $(\sigma,j,k) \in D_{N,p}$, the previous expectation is less than or equal to

$$C_0 + \Upsilon_N \mathbf{P}_{(\sigma,j,k)} [J_N^+ < H_N].$$

As in the first part of the proof, since $\sum_j r_j > 0$, the process hits $\partial \Xi_N$ before returning to $D_{N,p}$ with a probability bounded below by a strictly positive constant independent of N : $\min_{(\sigma,j,k) \in D_{N,p}} \mathbf{P}_{(\sigma,j,k)} [H_N < J_N^+] \geq c_0 > 0$. Therefore, $\Upsilon_N \leq C_0$. This completes the proof of assertion (4.14) and the one of the lemma. \square

Lemma 4.4. *Assume that $\sum_j r_j > 0$. Then, for every $\delta > 0$,*

$$\lim_{N \rightarrow \infty} \max_{\substack{(j,k) \in \mathbb{D}_N \\ j > \delta N}} |\varphi_N^{(2)}(1,j,k)| = 0.$$

Proof. Fix $\delta > 0$ and $(j,k) \in \mathbb{D}_N$ such that $j > \delta N$. Recall the notation introduced just before Lemma 4.2. In view of the definition of b_N , given in (4.4), (4.5), (4.6),

$$|\varphi_N^{(2)}(1,j,k)| \leq \mathbf{P}_{(1,j,k)} [H(\Sigma) < H(\partial_N)].$$

The assertion of the lemma follows from Lemma 4.2. \square

Proof of Theorem 2.1. The proof is straightforward. It is enough to prove the result for continuous functions with compact support in $(0,1)$. Fix such a function G and let $\delta > 0$ such that the support of G is contained in $[\delta, 1 - \delta]$. By Schwarz inequality and by (4.1), the square of the expectation appearing in the statement of the theorem is bounded above by

$$C(G) \left(\frac{1}{N} \sum_{k=1}^{N-1} |\rho_N(k) - \bar{u}(k/N)| \right)^2 + \frac{C(G)}{N^2} \sum_{j,k=1}^{N-1} G(j/N) G(k/N) \varphi_N(1,j,k),$$

where φ_N has been introduced in (4.1) and $C(G)$ a finite constant which depends only on G . By Lemmata 3.5, 4.3 and 4.4 this expression vanishes as $N \rightarrow \infty$. \square

Remark 4.5. Assume that $\sum_{j \in \Lambda_p^*} r_j = 0$ and $\sum_{j, k \in \Lambda_p^*} a_{j, k} > 0$. The proof that the correlations vanish, presented in Lemmata 4.3 and 4.4, requires a new argument based on the following observation. Under the conditions of this remark, the boundary $\partial \Xi_N$ of the set Ξ_N is reduced to the set

$$\{(\sigma, k, k) : \sigma = \pm 1, -p \leq k \leq 0\} \cup \{(\sigma, k, N) : \sigma = \pm 1, -p \leq k < N - 1\}.$$

To prove that the correlations vanish, one has to show that by the time the process $X_N(t)$ hits the set $\{(\sigma, k, k) : \sigma = \pm 1, -p \leq k \leq 0\}$ its coordinate σ has equilibrated and takes the value ± 1 with probability close to $1/2$.

5. PROOF OF THEOREM 2.4

The proof of Theorem 2.4 is based on a graphical construction of the dynamics through independent Poisson point processes.

Recall the definition of the rates A, B introduced in (2.12), that $\Omega_p = \{0, 1\}^{\{1, \dots, p-1\}}$, and that $\lambda(0, \xi) = c(0, \xi) - A$, $\lambda(1, \xi) = c(1, \xi) - B$, $\xi \in \Omega_p$. Further, recall that we assume

$$(p-1) \sum_{\xi \in \Omega_p} \{\lambda(0, \xi) + \lambda(1, \xi)\} < A + B.$$

The left boundary generator can be rewritten as

$$\begin{aligned} (L_l f)(\eta) &= A [f(T^1 \eta) - f(\eta)] + B [f(T^0 \eta) - f(\eta)] \\ &+ \sum_{a=0}^1 \sum_{\xi \in \Omega_p} \lambda(a, \xi) \mathbf{1}\{\Pi_p \eta = (a, \xi)\} [f(T^{1-a} \eta) - f(\eta)], \end{aligned}$$

provided $\Pi_p : \Omega_N \rightarrow \Omega_p^* := \{0, 1\}^{\{1, \dots, p\}}$ represents the projection on the first p coordinates: $(\Pi_p \eta)_k = \eta_k$, $1 \leq k \leq p$. Similarly, the right boundary generator can be expressed as

$$(L_{r, N} f)(\eta) = \beta [f(S^1 \eta) - f(\eta)] + (1 - \beta) [f(S^0 \eta) - f(\eta)],$$

where

$$(S^a \eta)_k = \begin{cases} a & \text{if } k = N - 1, \\ \eta_k & \text{otherwise.} \end{cases}$$

5.1. Graphical construction. Let $P := 2^{p-1} = |\Omega_p|$. We present in this subsection a graphical construction of the dynamics based on $N + 2P + 2$ independent Poisson point processes defined on \mathbb{R} .

- $(N - 2)$ processes $\mathfrak{N}_{i, i+1}(t)$, $1 \leq i \leq N - 2$, with rate 1.
- 2 processes $\mathfrak{N}^{+, l}(t)$, $\mathfrak{N}^{-, l}(t)$ with rates A, B , respectively, representing creation and annihilation of particles at site 1, regardless of the boundary condition.
- $2P$ processes $\mathfrak{N}_{(a, \xi)}(t)$, $a = 0, 1$, $\xi \in \Omega_p$, with rates $\lambda(a, \xi)$ to take into account the influence of the boundary in the creation and annihilation of particles at site 1.
- 2 processes $\mathfrak{N}^{+, r}(t)$, $\mathfrak{N}^{-, r}(t)$, with respective rates β and $1 - \beta$, to trigger creation and annihilation of particles at site $N - 1$.

Place arrows and daggers on $\{1, \dots, N-1\} \times \mathbb{R}$ as follows. Whenever the process $\mathfrak{N}_{i,i+1}(t)$ jumps, place a two-sided arrow over the edge $(i, i+1)$ at the time of the jump to indicate that at this time the occupation variables η_i, η_{i+1} are exchanged. Analogously, each time the process $\mathfrak{N}_{(a,\xi)}(t)$ jumps, place a dagger labeled (a, ξ) over the vertex 1. Each time $\mathfrak{N}^{\pm,l}(t)$ jumps, place a dagger labeled \pm over the vertex 1. Finally, each time $\mathfrak{N}^{\pm,r}(t)$ jumps, place a dagger labeled \pm over the vertex $N-1$.

Fix a configuration $\zeta \in \Omega_N$ and a time $t_0 \in \mathbb{R}$. Define a path $\eta(t)$, $t \geq t_0$, based on the configuration ζ and on the arrows and daggers as follows. By independence, we may exclude the event that two of those processes jump simultaneously. Let $\tau_1 > t_0$ be the first time a mark (arrow or dagger) is found after time t_0 . Set $\eta(t) = \zeta$ for any $t \in [t_0, \tau_1)$. If the first mark is an arrow labeled $(i, i+1)$, set $\eta(\tau_1) = \sigma^{i,i+1}\eta(\tau_1-)$. If the mark is a dagger labeled (a, ξ) , set $\eta(\tau_1) = T^a\eta(\tau_1-)$ if $\Pi_p\eta(\tau_1-) = (a, \xi)$. Otherwise, let $\eta(\tau_1) = \eta(\tau_1-)$. Finally, if the mark is a dagger on site 1, resp. $N-1$, labeled \pm , set $\eta(\tau_1) = T^{[\pm 1]/2}\eta(\tau_1-)$, resp. $\eta(\tau_1) = S^{[\pm 1]/2}\eta(\tau_1-)$.

At this point, the path η is defined on the segment $[t_0, \tau_1]$. By repeating the previous construction on each time-interval between two consecutive jumps of the Poisson point processes, we produce a trajectory $(\eta(t) : t \geq t_0)$. We leave the reader to check that $\eta(t)$ evolves as a continuous-time Markov chain, started from ζ , whose generator is the operator L_N introduced in (2.11).

5.2. Dual Process. To determine whether site 1 is occupied or not at time $t = 0$ we have to examine the evolution backward in time. This investigation, called the revelation process, evolves as follows.

Let mark mean an arrow or a dagger. To know the value of $\eta_1(0)$ we have to examine the past evolution. Denote by $\tau_1 < 0$ the time of the last mark involving site 1 before $t = 0$. By the graphical construction, the value of η_1 does not change in the time interval $[\tau_1, 0]$.

Suppose that the mark at time τ_1 is an arrow between 1 and 2. In order to determine if site 1 is occupied at time 0 we need to know if site 2 is occupied at time τ_1- . The arrows are thus acting as a stirring dynamics in the revelation process. Each time an arrow is found, the site whose value has to be determined changes.

If the mark at time τ_1 is a dagger labeled $+$ at site 1, $\eta_1(0) = \eta_1(\tau_1) = 1$, and we do not need to proceed further. Analogously, daggers labeled $-$ or $+$ at sites 1, $N-1$ reveal the value of the occupation variables at these sites at the time the mark appears. Hence, these marks act an annihilation mechanism.

Suppose that the mark at time τ_1 is a dagger labeled (a, ξ) . To determine whether site 1 is occupied at time 0 we need to know the values of $\eta_1(\tau_1-), \dots, \eta_p(\tau_1-)$. Indeed, if $\Pi_p\eta(\tau_1-) = (a, \xi)$, $\eta_1(0) = \eta_1(\tau_1) = 1 - a$, otherwise, $\eta_1(0) = \eta_1(\tau_1) = \eta_1(\tau_1-)$. Hence, marks labeled (a, ξ) act as branching events in the revelation process.

It follows from this informal description that to determine the value at time 0 of site 1, we may be forced to find the values of the occupation variables of a larger subset \mathcal{A} of Λ_N at a certain time $t < 0$.

Suppose that we need to determine the values of the occupation variables of the set $\mathcal{A} \subset \Lambda_N$ at time $t < 0$. Let $\tau < t$ be the first [backward in time] mark of one

of the Poisson processes: there is a mark at time τ and there are no marks in the time interval $(\tau, t]$. Suppose that the mark at time τ is

- (a) an arrow between i and $i + 1$;
- (b) a dagger labeled \pm at site 1;
- (c) a dagger labeled \pm at site $N - 1$;
- (d) a dagger labeled (a, ξ) at site 1.

Then, to determine the values of the occupation variables in the set \mathcal{A} at time τ (and thus at time t), we need to find the values of the occupation variables in the set

- (a) $\sigma^{i, i+1}\mathcal{A}$, defined below in (5.1);
- (b) $\mathcal{A} \setminus \{1\}$;
- (c) $\mathcal{A} \setminus \{N - 1\}$;
- (d) $\mathcal{A} \cup \{1, \dots, p\}$ if $1 \in \mathcal{A}$, and \mathcal{A} otherwise

at time $\tau -$. Since independent Poisson processes run backward in time are still independent Poisson processes, this evolution corresponds to a Markov process taking values in Ξ_N , the set of subsets of Λ_N , whose generator \mathfrak{L}_N is given by

$$\mathfrak{L}_N = \mathfrak{L}_l + \mathfrak{L}_{0,N} + \mathfrak{L}_{r,N},$$

where

$$\begin{aligned} (\mathfrak{L}_{0,N}f)(\mathcal{A}) &= \sum_{i=1}^{N-2} [f(\sigma^{i, i+1}\mathcal{A}) - f(\mathcal{A})]; \\ (\mathfrak{L}_l f)(\mathcal{A}) &= (A + B) \mathbf{1}\{1 \in \mathcal{A}\} (f(\mathcal{A} \setminus \{1\}) - f(\mathcal{A})) \\ &+ \sum_{\xi \in \Omega_p} \lambda(\xi) \mathbf{1}\{1 \in \mathcal{A}\} (f(\mathcal{A} \cup \{1, \dots, p\}) - f(\mathcal{A})); \\ (\mathfrak{L}_{r,N}f)(\mathcal{A}) &= f(\mathcal{A} \setminus \{N - 1\}) - f(\mathcal{A}). \end{aligned}$$

In these formulae, $\lambda(\xi) = \lambda(0, \xi) + \lambda(1, \xi)$, and

$$\sigma^{i, i+1}\mathcal{A} = \begin{cases} \mathcal{A} \cup \{i + 1\} \setminus \{i\} & \text{if } i \in \mathcal{A}, i + 1 \notin \mathcal{A} \\ \mathcal{A} \cup \{i\} \setminus \{i + 1\} & \text{if } i \notin \mathcal{A}, i + 1 \in \mathcal{A} \\ \mathcal{A} & \text{otherwise.} \end{cases} \quad (5.1)$$

Denote by $\mathcal{A}(s)$ the Ξ_N -valued process whose generator is \mathfrak{L}_N and which starts from $\{1\}$. If $\mathcal{A}(s)$ hits the empty set at some time $T > 0$ due to the annihilations, this means that we can reconstruct the value of site 1 at time 0 only from the Poisson point processes in the time interval $[-T, 0]$, and with no information on the configuration at time $-T$, $\eta(-T)$.

On the other hand, it should be verisimilar that if the number of daggers labeled \pm is much larger than the number of daggers labeled (a, ξ) , that is, if the rates $\lambda(a, \xi)$ are much smaller than $A + B$, the process $\mathcal{A}(s)$ should attain the empty set. The next lemmata show that this is indeed the case.

Let

$$T = \inf\{s > 0 : \mathcal{A}(s) = \emptyset\}.$$

It is clear that for any $s > 0$, the value of $\eta_1(0)$ can be recovered from the configuration $\eta(-s)$ and from the Poisson marks in the interval $[-s, 0]$. The next lemma asserts that $\eta_1(0)$ can be obtained only from the Poisson marks in the interval $[-T, 0]$.

Lemma 5.1. *Assume that $T < \infty$. The value of $\eta_1(0)$ can be recovered from the marks in the time interval $[-T, 0]$ of the $N + 2(P + 1)$ Poisson point processes \mathfrak{N} introduced in the beginning of this section.*

Proof. Let $\Xi'_N = \{0, 1, u\}^{\Lambda_N}$, where u stands for unknown. Denote by ζ the configurations of Ξ'_N . We first construct, from the marks of the Poisson point processes $\mathfrak{N}(t)$ on $[-T, 0]$, a Ξ'_N -valued evolution $\zeta(s)$ on the time interval $[(-T)-, 0]$ in which the set $B(s) = \{k \in \Lambda_N : \zeta_k(s) \neq u\}$ represents the sites whose occupation variables can be determined by the Poisson point processes only.

Let $\zeta_k([-T] -) = u$ for all $k \in \Lambda_N$. By definition of the evolution of $\mathcal{A}(s)$, T corresponds to a mark of one of the Poisson point processes $\mathfrak{N}^{\pm, l}$, $\mathfrak{N}^{\pm, r}$. We define $\zeta(-T)$ as follows. If it is a mark from $\mathfrak{N}^{\pm, l}$ we set $\zeta_1(-T) = [1 \pm 1]/2$ and $\zeta_k(-T) = u$ for $k \neq 1$. Analogously, if it is a mark from $\mathfrak{N}^{\pm, r}$ we set $\zeta_{N-1}(-T) = [1 \pm 1]/2$ and $\zeta_k(-T) = u$ for $k \neq N - 1$.

Denote by $-T = \tau_0 < \tau_1 < \dots < \tau_M < 0 < \tau_{M+1}$ the successive times at which a dagger of type \pm occurs at site 1 or $N - 1$. If τ_j corresponds to a mark from $\mathfrak{N}^{\pm, l}$ we set $\zeta_1(\tau_j) = [1 \pm 1]/2$ and we leave the other values unchanged. We proceed analogously if τ_j corresponds to a mark from $\mathfrak{N}^{\pm, r}$. There are (almost surely) a finite number of such times because $T < \infty$ by assumption.

In the intervals (τ_j, τ_{j+1}) , holes, particles and unknowns exchange their positions according to the marks of $\mathfrak{N}_{i, i+1}(t)$. Each time σ a dagger of type $\lambda(a, \xi)$ is found, if $(\zeta_1(\sigma-), \dots, \zeta_p(\sigma-)) = (a, \xi)$, we update the configuration accordingly. Otherwise, we leave the configuration unchanged. This completes the description of the evolution of the process $\zeta(s)$.

We claim that

$$B(s) \supset \mathcal{A}([-s]-) \quad \text{for all} \quad -T \leq s \leq 0. \quad (5.2)$$

The left limit $(-s)-$ in $\mathcal{A}([-s]-)$ appears because by convention the processes $\zeta(s)$ and $\mathcal{A}(s)$ are both right-continuous and the latter one is run backwards in time.

We prove this claim by recurrence. By construction, $B([-T]-) = \mathcal{A}(T) = \emptyset$ and $B(-T) = \mathcal{A}(T-) = \{1\}$ or $\{N - 1\}$, depending on the mark occurring for \mathcal{A} at time T . It is clear that if $B(\tau-) \supset \mathcal{A}(-\tau)$, where $\tau \in [-T, 0)$ is an arrow of type $\mathfrak{N}_{i, i+1}$ or a mark of type $\mathfrak{N}^{\pm, l}$, $\mathfrak{N}^{\pm, r}$, then $B(\tau) \supset \mathcal{A}([-\tau]-)$. Observe that the inclusion may be strict. For example, if $\tau \in [-T, 0)$ is a mark of type $\mathfrak{N}^{+, l}$ and $\mathcal{A}([-\tau]-)$ does not contain 1. This mark permits to determine the value of site 1 at time τ , so that $B(\tau) \ni 1$ but $\mathcal{A}([-\tau]-) \not\ni 1$.

Similarly, suppose that $B(\tau-) \supset \mathcal{A}(-\tau)$ and that $\tau \in (-T, 0)$ is a mark of type $\mathfrak{N}_{(a, \xi)}$. If 1 belongs to $\mathcal{A}([-\tau]-)$, then $\mathcal{A}(-\tau)$ contains $\{1, \dots, p\}$ and so does $B(\tau-)$ because $B(\tau-) \supset \mathcal{A}(-\tau)$. Hence, all information to update site 1 is available at time $\tau-$ and $1 \in B(\tau) = B(\tau-)$. Since $\mathcal{A}([-\tau]-)$ is contained in $\mathcal{A}(-\tau)$ [it can be strictly contained because some points $m \in \{2, \dots, p\}$ may not belong to $\mathcal{A}([-\tau]-)$], $B(\tau) \supset \mathcal{A}([-\tau]-)$.

On the other hand, if 1 does not belong to $\mathcal{A}([-\tau]-)$, then $\mathcal{A}([-\tau]-) = \mathcal{A}(-\tau)$, while $B(\tau) \supset B(\tau-)$. [This relation may be strict because it might happen that $1 \notin B(\tau-)$ and there might be enough information to determine the value of site 1 at time τ .] Thus $B(\tau) \supset B(\tau-) \supset \mathcal{A}(-\tau) = \mathcal{A}([-\tau]-)$. This proves claim (5.2).

Since $\mathcal{A}(0) = \mathcal{A}(0-) = \{1\}$, by (5.2), $B(0) \ni 1$, which proves the lemma. \square

Denote by \mathbb{Q}_N the probability measure on $D(\mathbb{R}_+, \Xi_N)$ induced by the process $\mathcal{A}(s)$ starting from $\{1\}$. Expectation with respect to \mathbb{Q}_N is represented by \mathbb{Q}_N as well.

Denote by $C(s)$ the total number of particles created up to time s . The next lemma provides a bound for the total number of particles created up to the absorbing time T .

Lemma 5.2. *Let $\lambda = \sum_{\xi \in \Omega_p} \{\lambda(0, \xi) + \lambda(1, \xi)\}$. Then,*

$$\mathbb{Q}_N [C(T)] \leq \frac{(p-1)\lambda}{A+B-(p-1)\lambda}.$$

Proof. Let $X(t)$ be a continuous-time random walk on \mathbb{Z} which jumps from k to $k-1$, resp. $k+p-1$, at rate $A+B$, resp. λ . Suppose that $X(0) = 1$, and let T_0 be the first time the random walk hits the origin. As $X(t \wedge T_0) + [A+B-(p-1)\lambda](t \wedge T_0)$ is an integrable, mean-1 martingale,

$$[A+B-(p-1)\lambda] E[t \wedge T_0] = 1 - E[X(t \wedge T_0)] \leq 1.$$

Letting $t \rightarrow \infty$ we conclude that $E[T_0] \leq 1/(A+B-(p-1)\lambda)$.

Let $R(s)$ be the total number of jumps to the right of the random walk X up to time s . R is a Poisson process of rate λ so that $R(s) - \lambda s$ is a martingale. Hence, $E[R(s \wedge T_0)] = \lambda E[s \wedge T_0]$. Letting $s \rightarrow \infty$, we obtain that

$$E[R(T_0)] = \lambda E[T_0] \leq \frac{\lambda}{A+B-(p-1)\lambda}.$$

Consider the process $\mathcal{A}(s)$ associated to the generator \mathfrak{L}_N . Denote the cardinality of a set $B \in \Xi_N$ by $|B|$. $|\mathcal{A}(s)|$ only changes when the set $\mathcal{A}(s)$ contains 1 or $N-1$. The Poisson daggers at $N-1$ may only decrease the cardinality of the set. When $\mathcal{A}(s)$ contains 1, Poisson daggers of type \pm appear at site 1 at rate $A+B$ and they decrease the cardinality of $\mathcal{A}(s)$ by 1. Analogously, the other daggers appear at site 1 at rate λ and increase the cardinality by at most $p-1$. This shows that we may couple $|\mathcal{A}(s)|$ with the random walk $X(s)$ in such a way that $|\mathcal{A}(s)| \leq X(s)$ and that $C(s) \leq (p-1)R(s)$ for all $0 \leq s \leq T_0$. The assertion of the lemma follows from the bound obtained in the first part of the proof. \square

As the total number of particles created in the process $\mathcal{A}(s)$ has finite expectation, and since these particles are killed at rate $A+B$ when they reach site 1, the life-span T_0 of $\mathcal{A}(s)$ can not be large and the set of sites ever visited by a particle in $\mathcal{A}(s)$ can not be large. This is the content of the next two lemmata.

Lemma 5.3. *For any sequence $\ell_N \rightarrow \infty$,*

$$\lim_{N \rightarrow \infty} \mathbb{Q}_N [T > N \ell_N] = 0.$$

Proof. Fix a sequence $\ell_N \rightarrow \infty$, let $m_N = \sqrt{\ell_N}$, and write

$$\mathbb{Q}_N [T > N \ell_N] \leq \mathbb{Q}_N [T > N \ell_N, C(T) \leq m_N] + \mathbb{Q}_N [C(T) > m_N].$$

By the Markov inequality and Lemma 5.2, the second term vanishes as $N \rightarrow \infty$.

Denote by T_1 the lifespan of the particle initially at 1, and by T_k , $2 \leq k \leq C(T)$, the lifespan of the k -th particle created in the process $\mathcal{A}(s)$. By lifespan, we mean

the difference $\tau_k - \sigma_k$, where σ_k , resp. τ_k , represents the time the k -th particle has been created, resp. annihilated. Clearly,

$$T \leq \sum_{k=1}^{C(T)} T_k .$$

Set $T_k = 0$ for $k > C(T)$. The first term on the right-hand side of the penultimate formula is bounded above by

$$\mathbb{Q}_N \left[\sum_{k=1}^{m_N} T_k > N \ell_N \right] \leq \frac{m_N}{N \ell_N} \sup_{k \geq 1} \mathbb{Q}_N [T_k] .$$

It remains to show that there exists a finite constant C_0 such that for all $k \geq 1$,

$$\mathbb{Q}_N [T_k] \leq C_0 N . \quad (5.3)$$

Particles are created at one of the first p sites. After being created, they perform a symmetric random walk at rate 1 on Λ_N . Each time a particle hits site 1, resp. $N - 1$, it is destroyed at rate $A + B$, resp. 1. We overestimate the lifespan by ignoring the annihilation at the right boundary.

Consider a particle performing a rate 1 random walk on Λ_N with reflection at the boundary $N - 1$ and annihilated at rate $A + B$ at site 1. Denote by \mathbf{P}_k the distribution of this random walk started from site k , and by \mathbf{E}_k the corresponding expectation. Let T_Y be the time this particle is killed at site 1, and Y_t , $t \leq T$ its position at time t . By the strong Markov property, $\mathbf{E}_k [T_Y]$ increases with k . Hence,

$$\mathbb{Q}_N [T_k] \leq \mathbf{E}_p [T_Y] .$$

Divide the lifespan T_Y in excursions away from 1. To keep notation simple, assume that the random walk Y keeps evolving after being killed. Denote by $\{t_j : j \geq 1\}$ the successive hitting times of site 1: $t_0 = 0$, and for $i \geq 1$,

$$t_i = \inf \{t > t_{i-1} : Y(t) = 1 \text{ and } Y(t-) \neq 1\} .$$

Denote by u_i , $i \geq 1$, the time the random walk $Y(t)$ leaves site 1 after t_i :

$$u_i = \inf \{t > t_i : Y(t) \neq 1\} ,$$

and set $u_0 = 0$. Let $\sigma_i = u_i - t_i$, resp. $s_i = t_i - u_{i-1}$, be duration of the i -th sojourn at 1, resp. the duration of the i -th excursion away from 1.

Denote by A_k the event “the particle is annihilated during its k -th sojourn at site 1”. With this notation we have that

$$T_Y \leq (s_1 + \sigma_1) + \sum_{i \geq 2} \mathbf{1}\{A_1^c \cap \cdots \cap A_{i-1}^c\} (s_i + \sigma_i) .$$

By the strong Markov property at time u_{i-1} ,

$$\mathbf{E}_p \left[\mathbf{1}\{A_1^c \cap \cdots \cap A_{i-1}^c\} (s_i + \sigma_i) \right] = \mathbf{P}_p \left[A_1^c \cap \cdots \cap A_{i-1}^c \right] \mathbf{E}_2 [s_1 + \sigma_1] .$$

Since the particle is annihilated at rate $A + B$ and leaves site 1 at rate 1, each time it hits site 1 it is killed during its sojourn at 1 with probability $(A + B)/(A + B + 1)$. Thus, by the strong Markov property, the probability on the right hand side of the previous displayed equation is equal to α^{i-1} , where $\alpha = 1/(A + B + 1)$, so that

$$\mathbf{E}_p [T_Y] \leq \mathbf{E}_p [s_1 + \sigma_1] + \frac{1}{A + B} \mathbf{E}_2 [s_1 + \sigma_1] .$$

On the one hand, for any $k \in \Lambda_N$, $\mathbf{E}_k[\sigma_1] = 1$. On the other hand, $\mathbf{E}_2[s_1] \leq \mathbf{E}_p[s_1]$. Since the random walk is reflected at $N-1$, by solving the elliptic difference equation satisfied by $f(k) = \mathbf{E}_k[s_1]$, we obtain that $\mathbf{E}_p[s_1] \leq C_0 N$ for some finite constant C_0 independent of N . This completes the proof (5.3) and the one of the lemma. \square

The proof of the previous lemma shows that each new particle performs only a finite number of excursions, where by excursion we mean the trajectory between the time the particle leaves site 1 and the time it returns to 1. In each excursion the particle visits only a finite number of sites. This arguments yields that during its lifespan the process $\mathcal{A}(s)$ does not visit many sites. This is the content of the next result.

Lemma 5.4. *For any sequence ℓ_N such that $\ell_N \rightarrow \infty$, $\ell_N \leq N-1$,*

$$\lim_{N \rightarrow \infty} \mathbb{Q}_N[\mathcal{A}(s) \ni \ell_N \text{ for some } s \geq 0] = 0.$$

Proof. Fix a sequence ℓ_N satisfying the assumptions of the lemma. Denote by $X_k(s)$ the position at time s of the k -th particle created. Before its creation and after its annihilation we set the position of the particle to be 0. The probability appearing in the statement of the lemma can be rewritten as

$$\mathbb{Q}_N \left[\bigcup_{l=1}^{C(T)} \{X_l(s) = \ell_N \text{ for some } s \geq 0\} \right].$$

Let $m_N = \sqrt{\ell_N}$. The previous expression is bounded by

$$\mathbb{Q}_N \left[\bigcup_{l=1}^{C(T)} \{X_l(s) = \ell_N \text{ for some } s \geq 0\}, C(T) \leq m_N \right] + \frac{1}{m_N} \mathbb{Q}_N[C(T)].$$

By Lemma 5.2, the second term vanishes as $N \rightarrow \infty$. Set $X_l(s) = 0$ for any $l > C(T)$, $s \geq 0$. With this notation, we can replace $C(T)$ by m_N in the union, to bound the first term in the previous equation by

$$\sum_{l=1}^{m_N} \mathbb{Q}_N[X_l(s) = \ell_N \text{ for some } s \geq 0].$$

It remains to show that there exists a finite constant C_0 such that for all $l \geq 1$,

$$\mathbb{Q}_N[X_l(s) = \ell_N \text{ for some } s \geq 0] \leq \frac{C_0}{\ell_N}. \quad (5.4)$$

To derive (5.4), recall the notation introduced in the proof of the previous lemma. Clearly, for any $l \geq 1$,

$$\mathbb{Q}_N[X_l(s) = \ell_N \text{ for some } s \geq 0] \leq \mathbf{P}_p[Y(s) = \ell_N \text{ for some } s \leq T_Y].$$

Note that this is not an identity because the l -th particle may have been created at a site $k < p$.

Denote by U_k the event that the particle Y visits the site ℓ_N in the time interval $[u_{k-1}, t_k]$. Hence,

$$\{Y^j(s) = \ell_N \text{ for some } s \geq 0\} \subset U_1 \cup \bigcup_{i \geq 2} (A_1^c \cap \dots \cap A_{i-1}^c \cap U_i).$$

By the strong Markov property applied at time u_{i-1} ,

$$\mathbf{P}_p[Y^j(s) = \ell_N \text{ for some } s \geq 0] \leq \mathbf{P}_p[U_1] + \sum_{i \geq 2} \mathbf{P}_p[A_1^c \cap \dots \cap A_{i-1}^c] \mathbf{P}_2[U_1].$$

If $Y(0) = k$, the event U_1 corresponds to the event that a symmetric random walk starting from k hits ℓ_N before it attains 1, so that $\mathbf{P}_k[U_1] = [k-1]/[\ell_N-1]$. Since the particle is annihilated with probability $(A+B)/(1+A+B)$ in each of its sojourn at site 1, by the strong Markov property, the previous sum is equal to

$$\frac{p-1}{\ell_N-1} + \frac{1}{A+B} \frac{1}{\ell_N-1}.$$

This proves assertion (5.4). \square

We have now all elements to show that the sequence $\rho_N(1)$ converges.

Proposition 5.5. *Suppose that conditions (2.13) are in force. The limit*

$$\alpha := \lim_{N \rightarrow \infty} \rho_N(1)$$

exists, and it does not depend on the boundary conditions at $N-1$.

Proof. The proof of this proposition is based on coupling a system evolving on Λ_N with a system evolving on Λ_M , $1 < N < M$ by using the same Poisson point processes to construct both evolutions.

Let $\{\mathfrak{N}^{\pm,r,b}(t) : t \in \mathbb{R}\}$, $b = 1, 2$, be independent Poisson point processes, where $\mathfrak{N}^{+,r,b}$ has rate β and $\mathfrak{N}^{-,r,b}$ rate $1-\beta$. Use the Poisson point processes $\mathfrak{N}_{i,i+1}(t)$, $1 \leq i < N-1$, $\mathfrak{N}^{\pm,l}(t)$, $\mathfrak{N}_{(a,\xi)}(t)$, $\mathfrak{N}^{\pm,r,1}(t)$, $t \in \mathbb{R}$, to construct trajectories of a Markov chain $\eta^N(t)$ whose generator is L_N introduced in (2.11). Similarly, use the Poisson point processes $\mathfrak{N}_{i,i+1}(t)$, $1 \leq i < M-1$, $\mathfrak{N}^{\pm,l}(t)$, $\mathfrak{N}_{(a,\xi)}(t)$, $\mathfrak{N}^{\pm,r,2}(t)$ to construct trajectories of a Markov chain $\eta^M(t)$ whose generator is L_M . Note that on the left boundary and on Λ_N the same Poisson processes are used to construct both chains.

Denote by $\mathcal{A}_N(t)$, $\mathcal{A}_M(t)$, $t \geq 0$, the dual processes evolving according to the Poisson marks described at the beginning of subsection 5.2 with initial condition $\mathcal{A}_N(0) = \mathcal{A}_M(0) = \{1\}$. By construction, $\mathcal{A}_N(t) = \mathcal{A}_M(t)$ for all $t \geq 0$ if $N-1 \notin \mathcal{A}_N(t)$ for all $t \geq 0$. Hence, since the value of $\eta^N(0)$ can be recovered from the trajectory $\{\mathcal{A}_N(t) : t \geq 0\}$,

$$\{\eta^N(0) \neq \eta^M(0)\} \subset \{\mathcal{A}_N(t) \ni N-1 \text{ for some } t \geq 0\}. \quad (5.5)$$

Denote by $\widehat{\mathbb{P}}_{N,M}$ the probability measure associated to the Poisson processes $\mathfrak{N}_{i,i+1}(t)$, $1 \leq i < M-1$, $\mathfrak{N}^{\pm,l}(t)$, $\mathfrak{N}_{(a,\xi)}(t)$, $\mathfrak{N}^{\pm,r,a}(t)$. Expectation with respect to $\widehat{\mathbb{P}}_{N,M}$ is represented by $\widehat{\mathbb{E}}_{N,M}$. With this notation, $\rho_N(1) = E_{\mu_N}[\eta_1] = \widehat{\mathbb{E}}_{N,M}[\eta_1^N(0)]$. Hence,

$$|\rho_N(1) - \rho_M(1)| \leq \widehat{\mathbb{E}}_{N,M}[|\eta_1^N(0) - \eta_1^M(0)|].$$

By (5.5), this expression is less than or equal to

$$\widehat{\mathbb{P}}_{N,M}[\mathcal{A}_N(t) \ni N-1 \text{ for some } t \geq 0] = \mathbb{Q}_N[\mathcal{A}(t) \ni N-1 \text{ for some } t \geq 0].$$

By Lemma 5.4 the right-hand side vanishes as $N \rightarrow \infty$. This shows that the sequence $\rho_N(1)$ is Cauchy and therefore converges.

Since the argument relies on the fact that the dual process $\mathcal{A}_N(t)$ reaches $N-1$ with a vanishing probability, the same proof works if the process $\eta^M(t)$ is defined

with any other dynamics at the right boundary, e.g., reflecting boundary condition. \square

In the next result we derive an explicit expression for the density $\rho_N(k)$ in terms of β and $\rho_N(1)$.

Lemma 5.6. *For all $k \in \Lambda_N$,*

$$\rho_N(k) = \frac{N-k}{N-1} \rho_N(1) + \frac{k-1}{N-1} \beta .$$

Proof. Recall that we denote by Δ_N the discrete Laplacian: $(\Delta_N f)(k) = f(k-1) + f(k+1) - 2f(k)$. Since μ_N is the stationary state, $E_{\mu_N}[L_N f] = 0$ for all function $f : \Omega_N \rightarrow \mathbb{R}$. Replacing f by η_k , $2 \leq k \leq N-1$, we obtain that

$$(\Delta_N \rho_N)(k) = 0 \quad \text{for } 2 \leq k \leq N-1 ,$$

provided we define $\rho_N(N)$ as β . The assertion of the lemma follows from these equations. \square

Fix $k \in \Lambda_N \setminus \{1\}$, and place a second particle at site k at time 0. This particle moves according to the stirring dynamics in Λ_N until it reaches site 1, when it is annihilated. This later specification is not very important in the argument below, any other convention for the evolution of the particle after the time it hits 1 is fine. Denote by $Z^k(s)$ the position of the extra particle at time s and by $d(A, j)$, $A \subset \Lambda_N$, $j \in \Lambda_N$, the distance between j and A . The next lemma asserts that the process $\mathcal{A}(s)$ is extinguished before the random walk $Z^k(s)$ gets near to $\mathcal{A}(s)$ if $k \geq \sqrt{N}$.

Lemma 5.7. *Let ℓ_N be a sequence such that $\ell_N \rightarrow \infty$, $\ell_N \sqrt{N} \leq N-1$. Then,*

$$\lim_{N \rightarrow \infty} \max_{\ell_N \sqrt{N} \leq k < N} \mathbb{Q}_N [d(\mathcal{A}(s), Z^k(s)) = 1 \text{ for some } s \geq 0] = 0 .$$

Proof. Recall that we denote by T the extinction time of the process $\mathcal{A}(s)$. The probability appearing in the lemma is bounded above by

$$\mathbb{Q}_N [\mathcal{A}(s) \ni \ell_N \sqrt{N}/3 \text{ for some } s \geq 0] + \mathbb{Q}_N [\sup_{s \leq T} |Z^k(s) - Z^k(0)| \geq \ell_N \sqrt{N}/3] .$$

By Lemma 5.4, the first term vanishes as $N \rightarrow \infty$. Let m_N be a sequence such that $m_N \rightarrow \infty$, $m_N/\ell_N^2 \rightarrow 0$. By Lemma 5.3, the second term is bounded by

$$\mathbb{Q}_N [\sup_{s \leq N m_N} |Z^k(s) - Z^k(0)| \geq \ell_N \sqrt{N}/3] + o_N(1) ,$$

where $o_N(1) \rightarrow 0$ as $N \rightarrow \infty$. Since Z^k evolves as a symmetric, nearest-neighbor random walk and $m_N/\ell_N^2 \rightarrow 0$, the first term vanishes as $N \rightarrow \infty$. \square

To prove a law of large numbers for the empirical measure under the stationary state, we examine the correlations under the stationary state. For $j, k \in \Lambda_N$, $j < k$, let

$$\rho_N(k) = E_{\mu_N}[\eta_k] , \quad \varphi_N(j, k) = E_{\mu_N}[\eta_j \eta_k] - \rho_N(j) \rho_N(k) . \quad (5.6)$$

Lemma 5.8. *Let ℓ_N be a sequence such that $\ell_N \rightarrow \infty$, $\ell_N \sqrt{N} \leq N-1$. Then,*

$$\lim_{N \rightarrow \infty} \max_{\ell_N \sqrt{N} \leq k < N} |\varphi_N(1, k)| = 0 .$$

Proof. The probability $\rho_N(k) = \mu_N(\eta_k = 1)$, $k \in \Lambda_N$, can be computed by running the process $\mathcal{A}(s)$ starting from $\mathcal{A}(0) = \{k\}$ until it is extinct, exactly as we estimated $\rho_N(1)$. Similarly, to compute $E_{\mu_N}[\eta_1 \eta_k]$, we run a process $\mathcal{A}(s)$ starting from $\mathcal{A}(0) = \{1, k\}$. In this case, denote by $\mathcal{A}_1(s)$, $\mathcal{A}_2(s)$ the sets at time s formed by all descendants of 1, k , respectively. Note that $\mathcal{A}_1(s)$ and $\mathcal{A}_2(s)$ may have a non-empty intersection. For instance, if a particle in $\mathcal{A}_1(s)$ branches and a site $k \leq p$ is occupied by a particle in $\mathcal{A}_2(s)$.

To compare $E_{\mu_N}[\eta_1 \eta_k]$ with $E_{\mu_N}[\eta_1] E_{\mu_N}[\eta_k]$, we couple a process $\mathcal{A}(s)$ starting from $\{1, k\}$ with two independent processes $\hat{\mathcal{A}}_1(s)$, $\hat{\mathcal{A}}_2(s)$, starting from $\{1\}$, $\{k\}$, respectively. We say that the coupling is successful if $\mathcal{A}_i(s) = \hat{\mathcal{A}}_i(s)$, $i = 1, 2$, for all $s \geq 0$. In this case, the value of the occupation variables η_1, η_k coincide for both processes.

Until $d(\mathcal{A}_1(s), \mathcal{A}_2(s)) = 1$, it is possible to couple $\mathcal{A}(s)$ and $\hat{\mathcal{A}}(s)$ in such a way that $\mathcal{A}_i(s) = \hat{\mathcal{A}}_i(s)$, $i = 1, 2$. Hence, by Lemma 5.7, since $k \geq \ell_N \sqrt{N}$, the coupling is successful with a probability which converges to 1 as $N \rightarrow \infty$. \square

Lemma 5.9. *For every $\delta > 0$,*

$$\lim_{N \rightarrow \infty} \max_{\delta N \leq j < k < N} |\varphi_N(j, k)| = 0.$$

The proof of this lemma is similar to the one Lemmata 4.3, 4.4. As the arguments are exactly the same, we just present the main steps. Denote by $\widehat{\mathbb{D}}_N$ the discrete simplex defined by

$$\widehat{\mathbb{D}}_N = \{(j, k) : 2 \leq j < k \leq N - 1\},$$

and by $\partial \widehat{\mathbb{D}}_N$ its boundary: $\partial \widehat{\mathbb{D}}_N = \{(1, k) : 3 \leq k \leq N - 1\} \cup \{(j, N) : 2 \leq j \leq N - 2\}$. Note that the points $(1, k)$ belong to the boundary and not to the set.

Denote by \mathcal{L}_N the generator of the symmetric, nearest-neighbor random walk on $\widehat{\mathbb{D}}_N$ with absorption at the boundary: For $(j, k) \in \widehat{\mathbb{D}}_N$,

$$\begin{aligned} (\mathcal{L}_N \phi)(j, k) &= (\Delta \phi)(j, k), \quad \text{for } k - j > 1, \\ (\mathcal{L}_N \phi)(k, k + 1) &= (\nabla_1^- \phi)(k, k + 1) + (\nabla_2^+ \phi)(k, k + 1) \quad \text{for } 1 < k < N - 2. \end{aligned}$$

In these formulae, ∇_i^\pm , resp. Δ , represent the discrete gradients, resp. Laplacians, introduced below equation (4.1).

As $E_{\mu_N}[L_N\{\eta_j - \rho_N(j)\}\{\eta_k - \rho_N(k)\}] = 0$, straightforward computations yield that the two-point correlation function φ_N introduced in (5.6) is the unique solution of

$$\begin{cases} (\mathcal{L}_N \psi_N)(j, k) + F_N(j, k) = 0, & (j, k) \in \widehat{\mathbb{D}}_N, \\ \psi_N(j, k) = b_N(j, k), & (j, k) \in \partial \widehat{\mathbb{D}}_N, \end{cases} \quad (5.7)$$

where $F_N : \widehat{\mathbb{D}}_N \rightarrow \mathbb{R}$ and $b_N : \partial \widehat{\mathbb{D}}_N \rightarrow \mathbb{R}$ are given by

$$F_N(j, k) = -[\rho_N(j + 1) - \rho_N(j)]^2 \mathbf{1}\{k = j + 1\}, \quad b_N(j, k) = \varphi_N(j, k) \mathbf{1}\{j = 1\}.$$

Denote by $\varphi_N^{(1)}$, resp. $\varphi_N^{(2)}$, the solution of (5.7) with $b_N = 0$, resp. $F_N = 0$. It is clear that $\varphi_N = \varphi_N^{(1)} + \varphi_N^{(2)}$. Let $X_N(t) = (X_N^1(t), X_N^2(t))$ be the continuous-time Markov chain on $\widehat{\mathbb{D}}_N \cup \partial \widehat{\mathbb{D}}_N$ associated to the generator \mathcal{L}_N . Let $\mathbf{P}_{(j, k)}$ be the distribution of the chain X_N starting from (j, k) . Expectation with respect to $\mathbf{P}_{(j, k)}$ is represented by $\mathbf{E}_{(j, k)}$.

Proof of Lemma 5.9. The piece $\varphi_N^{(1)}$ of the covariance has an explicit expression. In view of Lemma 5.6, for $1 \leq j < k \leq N$,

$$\varphi_N^{(1)}(j, k) = -\frac{[\beta - \rho_N(1)]^2}{(N-1)^2} \frac{(j-1)(N-k)}{N-2} \leq \frac{C_0}{N}$$

for some finite constant C_0 , independent of N . The piece $\varphi_N^{(2)}$ requires a more careful analysis.

Let H_N be the hitting time of the boundary $\partial \widehat{\mathbb{D}}_N$:

$$H_N = \inf \{ t \geq 0 : X_N(t) \in \partial \widehat{\mathbb{D}}_N \}.$$

We have that

$$\varphi_N^{(2)}(j, k) = \mathbf{E}_{(j,k)} [b_N(X_N(H_N))] = \mathbf{E}_{(j,k)} [\varphi_N(X_N(H_N)) \mathbf{1}\{X_N^1(H_N) = 1\}].$$

Let k_N be a sequence such that $k_N \ll N$. By (4.9), for all $\delta > 0$,

$$\lim_{N \rightarrow \infty} \max_{\delta N \leq l < m < N} \mathbf{P}_{(l,m)} [X_N^2(H_N) \leq k_N] = 0.$$

Therefore, setting $k_N = \ell_N \sqrt{N}$, where $1 \ll \ell_N \ll \sqrt{N}$, by Lemma 5.8,

$$\lim_{N \rightarrow \infty} \max_{\substack{(j,k) \in \widehat{\mathbb{D}}_N \\ j > \delta N}} |\varphi_N^{(2)}(j, k)| \leq \lim_{N \rightarrow \infty} \max_{\ell_N \sqrt{N} \leq k < N} |\varphi_N(1, k)| = 0.$$

This proves the lemma. \square

Proof of Theorem 2.4. The first assertion of the theorem has been proved in Lemma 5.6. The proof of the second one is identical to the proof of Theorem 2.1. \square

6. SPEEDED-UP BOUNDARY CONDITIONS

Recall that we denote by μ , resp. μ_N , the stationary state of the Markov chain on Ω_p^* , resp. $\Omega_{N,p}$. Fix a smooth profile $u : [0, 1] \rightarrow (0, 1)$ such that $u(0) = \rho(0)$, $u(1) = \beta$, and let $\nu_{N,p}$ be the product measure defined by

$$\nu_{N,p}(\xi, \eta) = \mu(\xi) \nu_u^N(\eta), \quad \xi \in \Omega_p^*, \eta \in \Omega_N,$$

where ν_u^N is the product measure on Ω_N with marginals given by $\nu_u^N\{\eta_k = 1\} = u(k/N)$.

Denote by f_N the density of μ_N with respect to $\nu_{N,p}$, and by $F_N : \Omega_p^* \rightarrow \mathbb{R}_+$ the density given by

$$F_N(\xi) = \int_{\Omega_N} f_N(\xi, \eta) \nu_u^N(d\eta).$$

Lemma 6.1. *There exists a finite constant C_0 such that*

$$|\rho_N(0) - \rho(0)| \leq C_0 / \sqrt{\ell_N}$$

for all $N \geq 1$.

Proof. Fix a function $g : \Omega_p^* \rightarrow \mathbb{R}$. As μ_N is the stationary state, and since $L_N g = \ell_N L_l g + L_{0,1} g$

$$0 = E_{\mu_N} [L_N g] = E_{\mu_N} [\ell_N L_l g + L_{0,1} g],$$

so that $|E_{\mu_N} [L_l g]| \leq 2 \|g\|_\infty / \ell_N$. Since

$$E_{\mu_N} [L_l g] = \int_{\Omega_{N,p}} (L_l g)(\xi) f_N(\xi, \eta) \nu_{N,p}(d\xi, d\eta) = \int_{\Omega_p^*} (L_l g)(\xi) F_N(\xi) \mu(d\xi),$$

for every $g : \Omega_p^* \rightarrow \mathbb{R}$,

$$\left| \int_{\Omega_p^*} g(\xi) (L_l^* F_N)(\xi) \mu(d\xi) \right| \leq 2\|g\|_\infty / \ell_N ,$$

where L_l^* represents the adjoint of L_l in $L^2(\mu)$. Since μ is the stationary state, L_l^* is the generator of a irreducible Markov chain on Ω_p^* . It follows from the previous identity that

$$\int_{\Omega_p^*} |(L_l^* F_N)(\xi)| \mu(d\xi) \leq C_0 / \ell_N$$

for some finite constant C_0 . Hence, since $\mu(\xi) > 0$ for all $\xi \in \Omega_p^*$, $\|L_l^* F_N\|_\infty \leq C_0 / \ell_N$. In particular,

$$- \int_{\Omega_p^*} F_N(\xi) (L_l^* F_N)(\xi) \mu(d\xi) \leq (C_0 / \ell_N) \int_{\Omega_p^*} F_N(\xi) \mu(d\xi) \leq C_0 / \ell_N .$$

Note that the expression on the left hand side is the Dirichlet form. Hence, by its explicit expression, $\max_{\xi, \xi'} [F_N(\xi') - F_N(\xi)]^2 \leq C_0 / \ell_N$, where the maximum is carried over all configuration pairs ξ, ξ' such that $R(\xi, \xi') + R(\xi', \xi) > 0$, R being the jump rate. In particular, as the chain is irreducible,

$$\|F_N - 1\|_\infty = \left\| F_N - \int_{\Omega_p^*} F_N(\xi) \mu(d\xi) \right\|_\infty \leq C_0 / \sqrt{\ell_N} .$$

We are now in a position to prove the lemma. One just needs to observe that

$$|\rho_N(0) - \rho(0)| = \left| E_{\mu_N}[\eta_0] - E_\mu[\eta_0] \right| = \left| \int_{\Omega_p^*} \xi_0 F_N(\xi) \mu(d\xi) - \int_{\Omega_p^*} \xi_0 \mu(d\xi) \right| ,$$

and that this expression is bounded by $\|F_N - 1\|_\infty$. \square

Let

$$\varphi_N(j, k) = E_{\mu_N}[\eta_j \eta_k] - \rho_N(j) \rho_N(k) , \quad j, k \in \Lambda_{N,p}, j < k .$$

Lemma 6.2. *There exists a finite constant C_0 such that $|\varphi_N(0, k)| \leq C_0 / \sqrt{\ell_N}$ for all $2 \leq k < N$.*

Proof. The argument is similar to the one of the previous lemma. Fix $0 < k < N$, and denote by $G_N = G_N^{(k)} : \Omega_p^* \rightarrow \mathbb{R}_+$ the non-negative function given by

$$G_N(\xi) = \int_{\Omega_N} \eta_k f_N(\xi, \eta) \nu_u^N(d\eta) .$$

With this notation,

$$E_{\mu_N}[\eta_0 \eta_k] = \int_{\Omega_p^*} \xi_0 G_N(\xi) \mu(d\xi) . \quad (6.1)$$

Fix $g : \Omega_p^* \rightarrow \mathbb{R}$ and $k \geq 2$. As $k \geq 2$, $L_N(g \eta_k) = \eta_k L_N g + g L_N \eta_k$. Thus, since μ_N is the stationary state,

$$0 = E_{\mu_N}[L_N(g \eta_k)] = \int_{\Omega_{N,p}} (\ell_N L_l + L_{0,1}) g \eta_k f_N d\nu_{N,p} + E_{\mu_N}[g L_N \eta_k] .$$

By definition of G_N and since $|L_N \eta_k| \leq 2$, $|L_{0,1} g| \leq 2\|g\|_\infty$,

$$\left| \int_{\Omega_p^*} (L_l g)(\xi) G_N(\xi) \mu(d\xi) \right| \leq (4 / \ell_N) \|g\|_\infty .$$

The argument presented in the proof of the previous lemma yields that

$$\left\| G_N - \int_{\Omega_p^*} G_N(\xi) \mu(d\xi) \right\|_\infty \leq C_0/\sqrt{\ell_N}.$$

Therefore,

$$\left| \int_{\Omega_p^*} \xi_0 \left\{ G_N(\xi) - \int_{\Omega_p^*} G_N(\xi') \mu(d\xi') \right\} \mu(d\xi) \right| \leq C_0/\sqrt{\ell_N}.$$

By definition of G_N and by (6.1), the expression inside the absolute value is equal to

$$E_{\mu_N}[\eta_0 \eta_k] - \rho(0) \rho_N(k).$$

The assertion of the lemma follows from the penultimate displayed equation and from Lemma 6.1. \square

Proof of Theorem 2.9. The first assertion of the theorem is the content of Lemma 6.1. The proof of Lemma 5.9 [with $\widehat{\mathbb{D}}_N$ defined as $\widehat{\mathbb{D}}_N = \{(j, k) : 1 \leq j < k \leq N - 1\}$] yields that for every $\delta > 0$,

$$\lim_{N \rightarrow \infty} \max_{\delta N \leq j < k < N} |\varphi_N(j, k)| = 0.$$

A Schwarz inequality, as in the proof of Theorem 2.1, completes the argument because $\rho_N(k) = (k/N) \beta + [1 - (k/N)] \rho_N(0)$, $1 \leq k \leq N$. \square

Acknowledgments. We thank H. Spohn for suggesting the problem and S. Grosskinsky for fruitful discussions. C. Landim has been partially supported by FAPERJ CNE E-26/201.207/2014, by CNPq Bolsa de Produtividade em Pesquisa PQ 303538/2014-7, and by ANR-15-CE40-0020-01 LSD of the French National Research Agency.

REFERENCES

- [1] L. Bertini, A. De Sole, D. Gabrielli, G. Jona-Lasinio, and C. Landim, , Macroscopic fluctuation theory for stationary non- equilibrium states, *J. Stat. Phys.* **107**, 635 (2002).
- [2] L. Bertini, A. De Sole, D. Gabrielli, G. Jona-Lasinio, and C. Landim, Macroscopic fluctuation theory. *Rev. Mod. Phys.* **87**, 593–636, (2015).
- [3] B. Derrida: Non-equilibrium steady states: Fluctuations and large deviations of the density and of the current. *J. Stat. Mech. Theory Exp.*, P07023 (2007).
- [4] B. Derrida, J. L. Lebowitz, and E. R. Speer. Large deviation of the density profile in the steady state of the open symmetric simple exclusion process. *J. Stat. Phys.* **107**, 599 (2002).
- [5] C. Erignoux: Hydrodynamic limit of boundary exclusion processes with nonreversible boundary dynamics. preprint arXiv:1712.04877, (2017).
- [6] G. Eyink, J. Lebowitz, H. Spohn: Hydrodynamics of stationary non-equilibrium states for some stochastic lattice gas models. *Comm. Math. Phys.* **132** 253–283 (1990).
- [7] A. Friedman: *Stochastic differential equations and applications*. Volume 1, Academic Press, New York, 1975.
- [8] C. Kipnis, C. Landim and S. Olla: Macroscopic properties of a stationary non–equilibrium distribution for a non–gradient interacting particle system, *Ann. Inst. H. Poincaré, Prob. et Stat.* **31**, 191–221 (1995).
- [9] C. Landim, S. Olla, S. Volchan: Driven tracer particle in one-dimensional symmetric simple exclusion. *Comm. Math. Phys.* **192**, 287–307 (1998).
- [10] G. F. Lawler: *Intersections of Random Walks*. Modern Birkhäuser Classics, Birkhäuser Basel, 1991.
- [11] L. Onsager: Reciprocal relations in irreversible processes. I, II *Phys. Rev.* **37**, 405 and **38**, 2265 (1931)

- [12] L. Onsager and S. Machlup: Fluctuations and irreversible processes. Phys. Rev. **91**, 1505 (1953)
- [13] N. Sonigo: Semi-infinite TASEP with a complex boundary mechanism. J. Stat. Phys. **136** 1069-1094 (2009)

EQUIPE PARADYSE, BUREAU B211 CENTRE INRIA LILLE NORD-EUROPE PARK PLAZA, PARC SCIENTIFIQUE DE LA HAUTE-BORNE, 40 AVENUE HALLEY BÂTIMENT B, 59650 VILLENEUVE-D'ASCQ FRANCE

E-MAIL: clement.erignoux@inria.fr

IMPA, ESTRADA DONA CASTORINA 110, CEP 22460 RIO DE JANEIRO, BRASIL AND CNRS UMR 6085, UNIVERSITÉ DE ROUEN, FRANCE.

E-MAIL: landim@impa.br

IMPA, ESTRADA DONA CASTORINA 110, CEP 22460 RIO DE JANEIRO, BRASIL

E-MAIL: tcxu@impa.br