



# Analysis of 3D non-linear Stokes problem coupled to transport-diffusion for shear-thinning heterogeneous microscale flows, applications to digital rock physics and mucociliary clearance

David Sanchez, Laurène Hume, Robin Chatelin, Philippe Poncet

## ► To cite this version:

David Sanchez, Laurène Hume, Robin Chatelin, Philippe Poncet. Analysis of 3D non-linear Stokes problem coupled to transport-diffusion for shear-thinning heterogeneous microscale flows, applications to digital rock physics and mucociliary clearance. ESAIM: Mathematical Modelling and Numerical Analysis, 2019, 53, pp.1083-1124. 10.1051/m2an/2019013 . hal-01718335v2

**HAL Id: hal-01718335**

**<https://hal.science/hal-01718335v2>**

Submitted on 8 Feb 2019 (v2), last revised 5 Jul 2019 (v3)

**HAL** is a multi-disciplinary open access archive for the deposit and dissemination of scientific research documents, whether they are published or not. The documents may come from teaching and research institutions in France or abroad, or from public or private research centers.

L'archive ouverte pluridisciplinaire **HAL**, est destinée au dépôt et à la diffusion de documents scientifiques de niveau recherche, publiés ou non, émanant des établissements d'enseignement et de recherche français ou étrangers, des laboratoires publics ou privés.

# Analysis of 3D non-linear Stokes problem coupled to transport-diffusion for shear-thinning heterogeneous microscale flows, applications to digital rock physics and mucociliary clearance

David Sanchez\*    Laurène Hume†    Robin Chatelin‡    Philippe Poncet†§

February 8, 2019

## Abstract

This study provides the analysis of the generalized 3D Stokes problem in a time dependent domain, modeling a solid in motion. The fluid viscosity is a non-linear function of the shear-rate and depends on a transported and diffused quantity. This is a natural model of flow at very low Reynolds numbers, typically at the microscale, involving a miscible, heterogeneous and shear-thinning incompressible fluid filling a complex geometry in motion. This one-way coupling is meaningful when the action produced by a solid in motion has a dominant effect on the fluid. Several mathematical aspects are developed. The penalized version of this problem is introduced, involving the penalization of the solid in a deformable motion but defined in a simple geometry (a periodic domain and/or between planes), which is of crucial interest for many numerical methods. All the equations of this partial differential system are analyzed separately, and then the coupled model is shown to be well-posed and to converge toward the solution of the initial problem. In order to illustrate the pertinence of such models, two meaningful micrometer scale real-life problems are presented: on the one hand, the dynamics of a polymer percolating the pores of a real rock and miscible in water; on the other hand, the dynamics of the strongly heterogeneous mucus bio-film, covering the human lungs surface, propelled by the vibrating ciliated cells. For both these examples the mathematical hypothesis are satisfied.

## Introduction

The dynamics of miscible non-Newtonian heterogeneous fluids, at the microscale, are of interest in almost any microfluidic configuration where a miscible polymer is introduced and diluted in a fluid. This concerns life science (at the scale of the cells), environment (at the scale of the pores in natural porous media), artificial micro-devices or highly viscous flows (food industry). The complexity of the physics involved, especially in natural sciences such as environment and life, leads to a very wide class of models with non-linear coupling between meaningful quantities.

In particular, considering polymers modeling, there are multiple ways to take into account the complexity of the non-linear behavior of the material, that is to say its rheology. Among the most common models, one can mention visco-plastic models involving a yield stress (such as Bingham fluids [3]), visco-elastic involving relaxation of strain rate and/or stress tensor possibly by means of upper-convected time derivation (such as Oldroyd-B or Maxwell models [39]), potentially extended to non-linear strain-stress relationships (Giesekus model [27, 46]). Rheology models also include non-linear viscosity models of shear-thinning or shear-thickening fluid, such as the Ostwald law (or power-law), the Carreau model [8], or Herschel-Bulkley [29] model involving a viscous-stress threshold (thus also featuring visco-plasticity).

The present study focuses on micro-scale modeling, involving the physics of highly viscous flows modeled by the stationary Stokes equation. The viscosity is assumed to follow the non-linear Carreau law (shear-thinning rheology), variable in space and time, modeling heterogeneities. This heterogeneous medium is in motion resulting from the velocity solution of the Stokes equation and also diffused. This results in a three-dimensional model coupling diffusion and transport, the Stokes equation, whose non-linear viscosity takes into account the rheology, with parameters varying with respect to space and time, due to the miscibility.

More precisely, a smooth immersed deformable body  $B(t)$  moving in the three-dimensional domain  $\Omega \subset \mathbb{R}^3$  is considered interacting with a highly viscous, incompressible, miscible and shear-thinning fluid in a time-dependent fluid domain  $\Omega \setminus B(t)$ . Such a prescribed domain motion is especially suitable for phenomena driven by the solid,

\*Toulouse Mathematics Institute, UMR CNRS 5219, Team MIP, INSA, GMM, 135 avenue de Rangueil, F-31077 Toulouse, France.

†University Pau & Pays Adour, LMAP, UMR CNRS 5142, IPRA, avenue de l'Université, F-64013 Pau, France.

‡Université de Lyon, ENI Saint Etienne, LTDS, UMR CNRS 5513, 58 rue Jean Parot, 42023 Saint-Etienne Cedex 2, France.

§philippe.poncet@univ-pau.fr

when the fluid feedback can be neglected. This avoids at the same time the parametrization of the fluid/solid interaction, which is sometimes difficult to carry out or subject to large uncertainties (such as elasticity features). In order to set up models around these geometries, the following set of  $\mathbb{R}^4$  is introduced, for a final real time  $T > 0$ , defining the fluid domain:

$$O_p^c = \left\{ (t, x) \in [0, T] \times \Omega, x \in \Omega \setminus \overline{B(t)} \right\}.$$

The shear-thinning feature induces a non-linear Stokes equation, whose solution provides the fluid velocity  $u$  and its pressure  $p$ . The heterogeneity means that the fluid parameters depend on a constituent concentration  $\alpha$  and the miscible aspects are modeled by the diffusion of this constituent  $\alpha$ . These modeling assumptions lead to the following system of partial differential equations:

$$\begin{cases} -\operatorname{div}(2\mu(\alpha, D(u))D(u)) = f - \nabla p \text{ in } O_p^c, \\ \operatorname{div} u = 0 \text{ in } O_p^c, \\ \partial_t \alpha + u \cdot \nabla \alpha - \sigma \Delta \alpha = 0 \text{ in } O_p^c, \\ u(t, \cdot) = \bar{u}(t, \cdot) \text{ on } \partial B(t) \setminus \partial \Omega, \end{cases} \quad (1)$$

where  $D(u) = (\nabla u + {}^t\nabla u)/2$  is the strain tensor and  $\mu$  is the variable viscosity, with given initial conditions for  $\alpha$ . The diffusion coefficient  $\sigma$  is a strictly positive real number. The boundary conditions are defined in the sets of conditions (7)-(8) and are quite usual: Dirichlet, Neumann, a combination of both, or periodic conditions on  $u$ , and typically no-flux (homogeneous Neumann) on  $\alpha$  on the body inner boundary  $\partial B(t) \setminus \partial \Omega$  and on the domain boundary  $\partial \Omega$ . For these conditions, the velocity is required to match a prescribed solid velocity  $\bar{u}$  almost everywhere on the body: a one-way fluid structure interaction is assumed, which means that the counter force exerted by the fluid on the solid is neglected, which is valid for the targeted applications.

In the present study, shear-thinning effects are considered, coming from the decreasing of the viscosity  $\mu$  with respect to the shear-rate

$$\dot{\gamma} = (2D(u):D(u))^{1/2} \stackrel{\text{def}}{=} \sqrt{2}|D(u)|.$$

The classical example is the Ostwald law  $\mu = K\dot{\gamma}^{q-2}/2$  with the exponent  $q \leq 2$  and the consistency  $K > 0$  (this law is also called power-law). It leads to a diffusion operator  $-\operatorname{div}(|D(u)|^{q-2}D(u))$  in equation (1), whose analysis is very close to the  $q$ -Laplacian theory. Its bounded version, exhibiting two physical Newtonian bounds and sometimes used as a regularization of the Ostwald law, is the following Carreau law:

$$\mu(\alpha, D) = \mu_\infty + (\mu_0(\alpha) - \mu_\infty) \left(1 + 2\beta(\alpha)^2 |D|^2\right)^{\frac{q(\alpha)-2}{2}} \quad (2)$$

where  $0 < \mu_\infty \leq \mu_0(\alpha)$  and  $q(\alpha) \in ]1, 2]$  for all  $\alpha$ , where  $\mu_0, \beta$  and  $q$  are  $\mathcal{C}^\infty$  functions of  $\alpha$ , and where  $D$  is an arbitrary  $3 \times 3$  matrix, in practice applied to the shear rate  $D(u)$ . With respect to  $\alpha$ , the viscosity at rest  $\mu_0$  is assumed to be increasing,  $q$  is assumed to be decreasing ( $N = q + 1$  is called the fluid index), and the material time  $\beta$  is assumed to be monotonic, for any  $\dot{\gamma}$ . These conditions include constant values. In practice  $\alpha$  is chosen in  $[0, 1]$  but is free to be in any closed interval of  $\mathbb{R}^+$ . It is noticeable that the need of an exponent  $q > 1$  excludes the Herschel-Bulkley model of visco-plasticity, which exhibits a  $1/\dot{\gamma}$  singularity such as  $q = 1$ .

In order to go forward to practical aspects of real-world applications, this system of partial differential equations is approximated by means of the following penalization of  $B(t)$  to satisfy the prescribed divergence-free velocity  $\bar{u}$  inside the body:

$$\begin{cases} -\operatorname{div}(2\mu(\alpha^\varepsilon, D(u^\varepsilon))D(u^\varepsilon)) + \frac{\mathbf{1}_{B(t)}}{\varepsilon} (u^\varepsilon - \bar{u}) = f - \nabla p^\varepsilon \text{ in } [0, T] \times \Omega, \\ \operatorname{div} u^\varepsilon = 0 \text{ in } [0, T] \times \Omega, \\ \partial_t \alpha^\varepsilon + u^\varepsilon \cdot \nabla \alpha^\varepsilon - \operatorname{div}(\sigma \nabla \alpha^\varepsilon) = 0 \text{ in } O_p^c \end{cases} \quad (3)$$

where  $\mathbf{1}_{B(t)}$  denotes the characteristic function of  $B(t)$ . We set  $\partial_n \alpha^\varepsilon(t, \cdot) = 0$  on  $\partial B(t) \setminus \partial \Omega$  for any time  $t$ , which ensures that there is no diffusion of fluid material inside the body. The related boundary conditions are detailed in the sets of conditions (7)-(8), as for the non-penalized problem.

The penalized equations set (3) is definitely of interest in order to perform numerical simulations, as it makes possible the use of numerical methods which avoid to mesh the body boundary  $\partial B(t)$  and its displacements.

The present study provides an original analysis of the non-linear system (3). The convection-diffusion equation analysis is performed in a time-dependent domain where classical methods can not be applied, and a mapping to a stationary domain with time-dependent operators is provided. Indeed, Galerkin methods cannot be used in this framework (an evolutionary spectrum can lead to possible multiple eigenvalues by means of path crossing). Hence an innovative technique is presented involving the limit of operators with piece-wise constant coefficients. Moreover, the equations (3) involving the penalization of the time-dependent domain are shown to have a unique solution, converging toward the solution to the original system of partial differential equations (1). Furthermore, this non-linear coupling involves shear-thinning effects leading to a second non-linearity by means of a generalized Stokes operator. This is analyzed using  $p(x, t)$ -Laplacian analytical techniques (variables exponent Lebesgue

spaces and Luxemburg norms typical from Orlicz spaces) which is a novelty for the analysis of the penalized formulation of fluids with rheology.

This article is consequently structured in four main parts, describing mathematically and numerically this coupled problem. The first part is a global overview which presents the model and the main mathematical results in section 1.

The second part presents in section 2 the analysis of each PDE involved in model (3), for time independent and time dependent domains (generalizing [18, 14] to non-linear framework). This section introduces the transformation of the non-linear viscosity into a variable  $q$ -Laplacian problem, in the spirit of the work from Diening *et al.* [19, 21, 20] for electro-rheological fluid, where they introduced the theory of variable exponent Lebesgue spaces. Still about this problem, sections 2.1 and 2.2 use  $p$ -Laplacian methods [33] to prove solutions for the non-coupled Stokes problem. In section 2.3 we study the rather simple convection-diffusion equation written in the non simple case of a time-dependent domain  $\Omega \setminus \bar{B}(t)$ . For this study, in order to improve the readability of the proofs, various technical arguments are presented in appendix A, including the Luxemburg norms and the required elements of non-linear analysis, and the regularity and  $\mathbb{L}^2$  estimates of the geometry lifting are provided in appendix B.

The third part of this article focuses on the mathematical aspects of the coupling in section 3, and shows the proofs of Theorem 1.1 and Theorem 1.2. They provide the existence of the solution of the penalized coupled problem (3), its convergence toward the solution of the initial problem (1) through the asymptotic analysis, and its solution's existence at the same time. To do so, an innovative technique of domain mapping is presented involving the limit of operators with piece-wise constant coefficients, since such a mapping leads to time-dependent differential operators and thus Galerkin methods cannot be used in this case (an evolutionary spectrum can lead to possible multiple eigenvalues by means of path crossing). To simplify the readability, some proofs are also provided in appendix C. Such a problem has been studied by Boyer and Fabrie in [5] for a coupling between Navier-Stokes and transport equations, and also by the present authors in [14] for the Newtonian case, that is to say for a viscosity independent of the shear-rate (*ie.* a linear Stokes problem). The theoretical study of a fixed penalized domain was performed by Carbou and Fabrie [7] for the Navier-Stokes equation.

The fourth part is dedicated to numerical simulations of such problems in real world configurations, showing that all the hypotheses set up before are necessary and satisfied. The  $\alpha$ -dependency of the parameters in (2) is subject to the mixing model. Firstly, an example from geosciences is provided in subsection 4.1, focusing on the heterogeneous rheology in a non-moving complex geometry. Secondly, a life science example related to the mucociliary clearance of human lungs is performed in subsection 4.2, and involves the shear-thinning mucus subject to mucin heterogeneity around epithelial ciliated cells in motion. The numerical parameters used in the simulations are available on table 2.

# 1 Problem setup and main results

## 1.1 Domains, equations and boundary conditions

Let  $T > 0$ ,  $B(t)$  a domain of  $\mathbb{R}^3$  depending on time  $t \in [0, T]$ , and  $\Omega$  a sufficiently smooth open set of  $\mathbb{R}^3$ . If one considers a problem with one periodic boundary condition at least, let  $\mathcal{Q}$  be an open set of  $\mathbb{R}^3$  whose boundary is sufficiently smooth. An equivalence relationship  $\sim$  (whose kernel is denoted  $G$ ) is also defined such that the quotient space  $\Omega \equiv \mathcal{Q}/G$ , with a topology induced from  $\mathcal{Q}$ , is sufficiently smooth.

Consequently, thanks to the quotient topology, the domain is smooth even if the faces involving periodic boundary conditions exhibit corners with the remaining part of the domain boundary. The Figure 1.1 illustrates the different configurations of acceptable and non acceptable domains with adequate boundary conditions.

One typical example of interest for the present study is a cube  $]0, L[^3$  on which two periodic boundary conditions are set: in that case,  $\mathcal{Q} = \mathbb{R}^2 \times ]0, L[$  and  $G = L\mathbb{Z}^2 \times \{0\}$ , so that  $\Omega \equiv \mathcal{Q}/G$  is smooth.

Four sets of  $\mathbb{R}^4$  are now introduced:

$$\begin{aligned} O &= [0, T] \times \Omega \quad \text{the whole domain in time and space coordinates,} \\ O_p &= \{(t, x) \in [0, T] \times \Omega, x \in B(t)\} \quad \text{the body, ie the penalized domain,} \\ O_p^c &= \{(t, x) \in [0, T] \times \Omega, x \in \Omega \setminus \bar{B}(t)\} = O \setminus \bar{O}_p \quad \text{the fluid domain,} \\ \Sigma &= \{(t, x) \in [0, T] \times \Omega, x \in \partial B(t) \setminus \partial \Omega\} \quad \text{the inner boundary of } O_p. \end{aligned} \tag{4}$$

The problem (1) rewrites in these spaces:

$$\begin{cases} u = \bar{u} \text{ in } O_p, \\ -\operatorname{div}(2\mu(\alpha, D(u))D(u)) = f - \nabla p \text{ in } O_p, \\ \operatorname{div} u = 0 \text{ in } O, \\ \partial_t \alpha + u \cdot \nabla \alpha - \operatorname{div}(\sigma \nabla \alpha) = 0 \text{ in } O_p^c. \end{cases} \tag{5}$$

On the boundaries of  $B(t)$  and  $\Omega$ , where the external normal field  $\nu$  is defined, we introduce  $u_\perp = (u \cdot \nu)\nu$  and  $u_\parallel = u - u_\perp = -(u \wedge \nu) \wedge \nu$ , respectively the normal and the tangential parts of  $u \in \mathbb{R}^3$  (the hypothesis



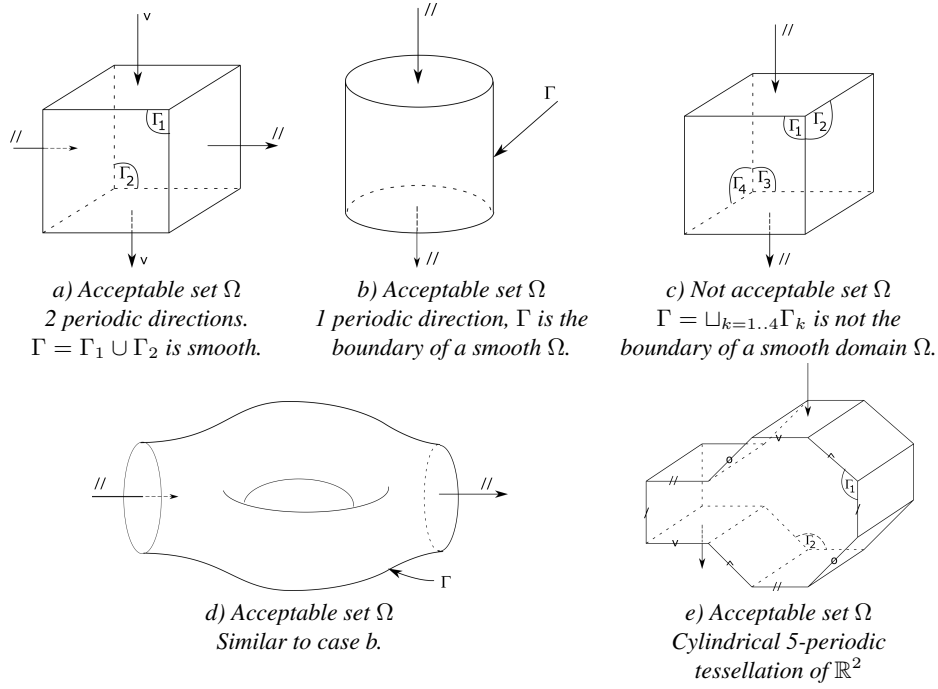


Figure 1: Acceptable domains  $\Omega$  whose boundaries have to be sufficiently smooth, and how to manage corners in domain regularity. Pairs of symbols denote periodicity.

H1 introduced after will forbid the fact that  $\nu$  may be undefined at  $\partial B(t)$  and  $\partial\Omega$  intersection). In order to easily setup up the boundary conditions of problem (1), let  $\Gamma_1, \dots, \Gamma_I$  denote the  $I$  connected components of  $\partial\Omega$  and their union

$$\Gamma = \bigsqcup_{i=1..I} \Gamma_i, \quad (6)$$

on which a set of  $\theta_i \in \{0, 1\}$ , constant on each connected component  $\Gamma_i$ , is introduced in order to naturally switch between Neumann and Dirichlet boundary conditions on  $u_{\parallel}$ . It can be noticed that due to the quotient topology, periodic boundary conditions do not appear among the  $\Gamma_i$  and consequently are not part of the listing of boundary conditions. Nevertheless, the mention *periodic otherwise* is written in order to remind that periodic conditions are included in the quotient topology. This leads to the following set of initial and boundary conditions:

$$\begin{cases} u_{\perp} = 0 & \text{on } [0, T] \times \Gamma, \\ \theta_i u_{\parallel} + (1 - \theta_i) \frac{\partial u_{\parallel}}{\partial \nu} = 0 & \text{on } [0, T] \times \Gamma_i, \forall i \in \{1, \dots, I\}, \\ u \text{ is periodic otherwise.} \end{cases} \quad (7)$$

with  $u = \bar{u}$  on  $\Sigma$ , and

$$\begin{cases} \frac{\partial \alpha}{\partial \nu} = 0 & \text{on } \Sigma \text{ and on } [0, T] \times \Gamma, \\ \alpha \text{ is periodic otherwise,} \\ \alpha(0, \cdot) = \alpha_0 \text{ in } \Omega. \end{cases} \quad (8)$$

The periodicity evoked in (7) and (8) is linked to the definition of the set  $\Omega$ . In the example of the cube  $]0, L[^3$ , the boundaries  $]0, L[ \times \{0, L\} \times ]0, L[$  and  $\{0, L\} \times ]0, L[^2$  disappear in  $\Omega$  thanks to its definition as a quotient. The condition "periodic otherwise" is a reminder throughout the article of this definition. The viscosity  $\mu$  and its regularity, with respect to  $\alpha$ , is assumed to satisfy:

$$\begin{cases} \mu(\alpha, D) = \mu_{\infty} + (\mu_0(\alpha) - \mu_{\infty}) (1 + 2\beta(\alpha)^2 |D|^2)^{\frac{q(\alpha)-2}{2}}, & \forall D \in \mathcal{M}_{3,3}(\mathbb{R}) \text{ and } \forall \alpha \in \mathbb{R}, \\ \mu_0 \in C^1(\mathbb{R}) \cap W^{1,\infty}(\mathbb{R}) \text{ and } \forall \alpha \in \mathbb{R}, \mu_0(\alpha) \geq \mu_{\infty} > 0, \\ \beta \in C^1(\mathbb{R}) \cap W^{1,\infty}(\mathbb{R}) \text{ and } \forall \alpha \in \mathbb{R}, \beta(\alpha) \geq 0, \\ q \in C^1(\mathbb{R}) \cap W^{1,\infty}(\mathbb{R}) \text{ and } \forall \alpha \in \mathbb{R}, q(\alpha) \in [q^-, 2] \text{ where } q^- > 1. \end{cases}$$

According to the modeling, the penalized problem (3) can be rewritten:

$$\begin{cases} -\operatorname{div} (2\mu(\alpha^{\varepsilon}, D(u^{\varepsilon})) D(u^{\varepsilon})) + \frac{\mathbf{1}_{B(t)}}{\varepsilon} (u^{\varepsilon} - \bar{u}) = f - \nabla p^{\varepsilon} & \text{in } O, \\ \operatorname{div} u^{\varepsilon} = 0 & \text{in } O, \\ \partial_t \alpha^{\varepsilon} + u^{\varepsilon} \cdot \nabla \alpha^{\varepsilon} - \operatorname{div} (\sigma \nabla \alpha^{\varepsilon}) = 0 & \text{in } O_p^c, \\ \alpha^{\varepsilon} \text{ is extended by 0} & \text{in } O_p, \end{cases} \quad (9)$$

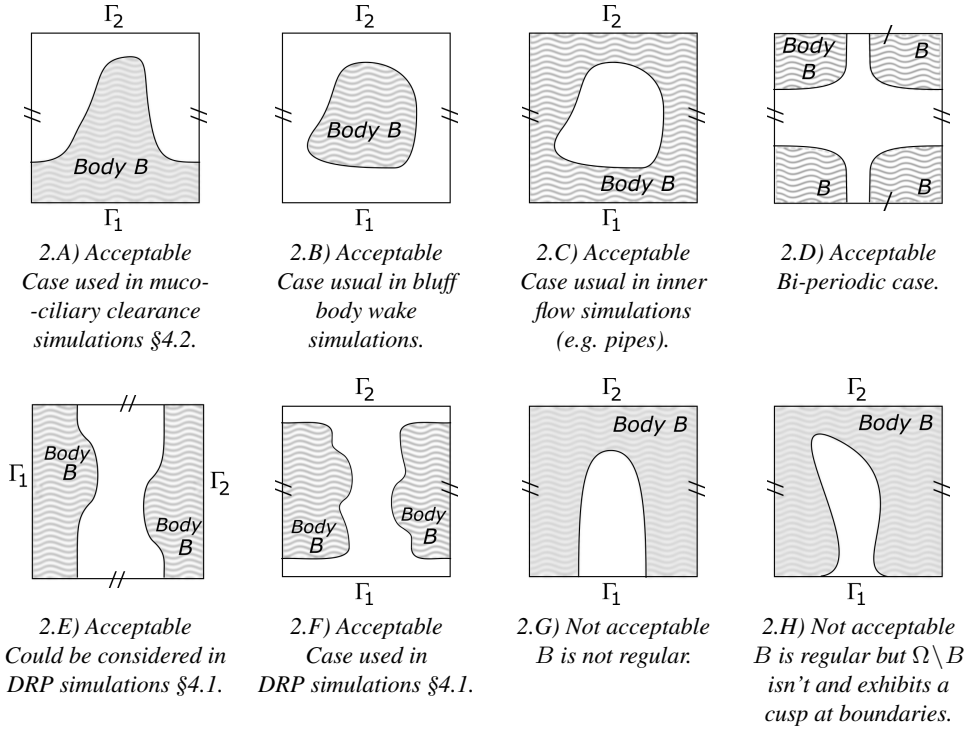


Figure 2: Acceptable cases of domains  $B$  for the  $\mathcal{C}^k$ -bi-regularity property introduced in definition 1.2.

with its initial and boundary conditions following the equation set (7)-(8).

In the following the norm on the spaces  $\mathbb{L}^p(\Omega; \mathbb{R}^n)$  will be simply denoted by  $\|\cdot\|_{\mathbb{L}^p(\Omega)}$  to ease the notations. Finally the following functional spaces are introduced:

**Definition 1.1** We let  $\mathcal{F}(\Omega; X)$  denote the set of functions defined on  $\Omega$  with values in  $X$  and

$$\begin{aligned} \mathbb{L}_0^2(\Omega) &= \{w \in \mathbb{L}^2(\Omega), \int_{\Omega} w \, dx = 0\} \\ V(\Omega) &= \{w \in \mathbb{H}^1(\Omega; \mathbb{R}^3), \operatorname{div} w = 0 \text{ on } \Omega, w_{\perp} = 0 \text{ on } \Gamma, \theta_i w_{\parallel} = 0 \text{ on } \Gamma_i, i=1..I\} \end{aligned}$$

with the usual  $\mathbb{H}^1$ -norm, the periodicity of function and normal field  $\nu$  being implicitly taken into account by definition of  $\Omega$ . Thanks to the generalized Poincaré's inequality (see [4] section III.6), there exists two constants depending only on  $\Omega$  such that for all  $w \in V(\Omega)$

$$c_1 \|\nabla w\|_{\mathbb{L}^2(\Omega)} \leq \|w\|_{\mathbb{H}^1(\Omega)} \leq c_2 \|\nabla w\|_{\mathbb{L}^2(\Omega)}.$$

## 1.2 Main results

The following existence and uniqueness results require some regularity assumptions on the obstacle's time evolution (H1)-(H2) and on the velocity  $\bar{u}$  inside the obstacle (H3). We first introduce a new definition:

**Definition 1.2** Let  $B$  be an open set in  $\Omega$ .  $B$  has the  $\mathcal{C}^k$ -bi-regularity property if and only if  $B$  has the uniform  $\mathcal{C}^k$ -regularity property (see [2] section 4 for the definition) up to the boundary of  $\Omega$  and  $\Omega \setminus \bar{B}$  is an open set in  $\Omega$  having the uniform  $\mathcal{C}^k$ -regularity property.

It is assumed that:

### Hypothesis 1 (H1)

- The domain  $B$  is an open set in  $\Omega$  having the  $\mathcal{C}^2$ -bi-regularity property,
- $\Omega \setminus \bar{B}$  is an open connected set in  $\Omega$ .

One can notice that if  $\bar{B} \cap \partial\Omega = \emptyset$  and  $B$  has the uniform  $\mathcal{C}^k$ -regularity property then  $B$  has the  $\mathcal{C}^k$ -bi-regularity property. Moreover, in the mucociliary clearance application, there exists  $(l, l') \in (\mathbb{R}^+)^2$  such that  $0 < l < l' < L$  and  $\Gamma \times [0, l] \subset B \subset \Gamma \times [0, l']$ , i.e. the bronchial wall is assumed to be the fixed domain  $\Gamma \times [0, l]$  where cilia are attached. Cilia are also supposed to never reach the top of the domain  $\Omega$ . There exists then domains  $B$  having the  $\mathcal{C}^k$ -bi-regularity property. Moreover the inner boundary  $\Sigma = \partial B \setminus \partial\Omega$  of  $B$  is smooth and may be smoothly periodically extended. It splits  $\Omega$  in two regular open sets.

Furthermore, we need existence and regularity of solutions for the convection-diffusion equation in the deformable domain, obtained by rewriting the equations in a stationary domain thanks to a diffeomorphism  $\Psi$ . The following assumptions on the regularity of  $\Psi$  are required for the continuity of field  $v$  and operator  $A$  in equations (16) and (17) :

**Hypothesis 2 (H2)** *There exists a function  $\Psi \in \mathcal{C}^1([0, T]; \mathcal{C}^2(\Omega; \mathbb{R}^3))$  such that for all  $t \in [0, T]$*

- $\Psi(t)$  is a  $\mathcal{C}^2$ -diffeomorphism on  $\Omega$ .
- $B(t) = \Psi(t)(B)$ .
- $\Psi(t)$  preserves the  $\mathcal{C}^2$ -bi-regularity property.
- $\Psi(t)$  preserves the Lebesgue measure of all sets, i.e.  $\forall \omega \subset \Omega \quad |\Psi(t)(\omega)| = |\omega|$ .

**Remarks:**

- The domain  $B(t)$  has the  $\mathcal{C}^2$ -bi-regularity property.
- In the following,  $\Psi(t)(\omega)$  is also denoted  $\Psi(t, \omega)$  or  $\Psi_t(\omega)$ .
- In the case of the lung simulations, if for all  $t \in [0, T]$ , one has  $\Psi(t)|_{[0, l] \times \Gamma} = \text{Id}_{[0, l] \times \Gamma}$ ,  $\Psi(t)([0, l'] \times \Gamma) \subset [0, l'] \times \Gamma$ , then  $\Psi(t)$  preserves the  $\mathcal{C}^2$ -bi-regularity property.
- We also have  $\Omega \setminus \bar{B}(t) = \Psi(t, \Omega \setminus \bar{B})$ .
- The preservation of the measure also implies that  $\forall (t, x) \in [0, T] \times \Omega$ ,  $|\det J_{\Psi(t)}(x)| = 1$  and  $\text{tr}(J_{\Psi(t)}^{-1} \partial_t \Psi(t)) = 0$ .

The velocity  $\bar{u}$  in  $B(t)$  has to be smooth enough:

**Hypothesis 3 (H3)** *We assume that*

- $\bar{u} \in \mathcal{C}^0([0, T]; \mathbb{H}^2(B(\cdot); \mathbb{R}^3))$
- $\forall t \in [0, T]$ ,  $\text{div } \bar{u}(t, \cdot) = 0$  in  $B(t)$ ,
- $\bar{u}$  fulfills the set of boundary conditions (7).

A last technical assumption on the viscosity is required:

**Hypothesis 4 (H4)** *We assume that*

- $(\alpha, Z) \mapsto (\mu_0(\alpha) - \mu_\infty)q'(\alpha) (1 + 2\beta(\alpha)^2 Z)^{\frac{q(\alpha)}{2}-1} \ln(1 + 2\beta^2(\alpha)Z)$  is bounded on  $K \times \mathbb{R}^+$  for all compact set  $K \subset \mathbb{R}$ ,
- $\alpha \mapsto (\mu_0(\alpha) - \mu_\infty)(q(\alpha) - 2)^{\frac{\beta'(\alpha)}{\beta(\alpha)}}$  is bounded on  $K \cap \{\alpha, \beta(\alpha) \neq 0\}$  for all compact set  $K$  in  $\mathbb{R}$ .

We can now define what is the meaning of a weak solution of the penalized problem (9) with boundary conditions (7)-(8), and then state in theorem 1.1 that there is a unique weak solution of the penalized problem under the assumption (H1) to (H4).

**Definition 1.3**  $(u^\varepsilon, p^\varepsilon, \alpha^\varepsilon)$  is a weak solution to (7)-(8)-(9) if it fulfills

- $u^\varepsilon \in \mathbb{L}^q(0, T; V(\Omega))$ ,  $p^\varepsilon \in \mathbb{L}^q(0, T; \mathbb{L}_0^2(\Omega))$  with  $2 \leq q \leq +\infty$ ,
- $\alpha^\varepsilon \in \mathbb{L}^\infty(0, T; \mathbb{H}^2(\Omega \setminus \bar{B}(\cdot))) \cap L^2(0, T; \mathbb{H}^3(\Omega \setminus \bar{B}(\cdot)))$  and  $\alpha^\varepsilon \in \mathbb{H}^1(0, T; \mathbb{H}^1(\Omega \setminus \bar{B}(\cdot)))$ ,
- $\alpha^\varepsilon = 0$  in  $O_p$ ,
- for all  $v \in \mathcal{C}_c(0, T; V(\Omega))$ ,

$$\iint_{(0, T) \times \Omega} 2\mu(\alpha^\varepsilon, D(u^\varepsilon)) D(u^\varepsilon) : D(v) dx dt + \frac{1}{\varepsilon} \iint_{O_p} (u^\varepsilon - \bar{u}) \cdot v dx dt = \iint_{(0, T) \times \Omega} f \cdot v dx dt,$$

- $\alpha^\varepsilon$  is the solution to  $\partial_t \alpha^\varepsilon + u^\varepsilon \cdot \nabla \alpha^\varepsilon - \text{div}(\sigma \nabla \alpha^\varepsilon) = 0$  in  $O_p^c$  and satisfies the set of initial and boundary conditions (8).

**Theorem 1.1** Let  $\alpha_0 \in \mathbb{H}^2(\Omega \setminus \bar{B}(0))$ . We assume (H1), (H2), (H3), (H4) and that for all  $T > 0$ ,  $f \in \mathbb{L}^\infty(0, T; L^2(\Omega; \mathbb{R}^3))$ . There exists then a unique weak solution  $(u^\varepsilon, p^\varepsilon, \alpha^\varepsilon)$  to (8)-(9). Moreover there exists some constants independent of  $\varepsilon$  such that  $u^\varepsilon$  fulfills

$$\begin{aligned} \mu_\infty \|D(u^\varepsilon)\|_{\mathbb{L}^\infty([0, T]; \mathbb{L}^2(\Omega))}^2 + \frac{1}{\varepsilon} \|u^\varepsilon - \bar{u}\|_{\mathbb{L}^\infty([0, T]; \mathbb{L}^2(B(\cdot)))}^2 \\ \leq C \|f\|_{\mathbb{L}^\infty([0, T]; \mathbb{L}^2(\Omega))} \|\bar{u}\|_{\mathbb{L}^\infty([0, T]; \mathbb{H}^2(B(\cdot)))} + C' \|f\|_{\mathbb{L}^\infty([0, T]; \mathbb{L}^2(\Omega))}^2 \\ + C'' \max \left( \|\bar{u}\|_{\mathbb{L}^\infty(0, T; \mathbb{H}^2(B(\cdot)))}^2, \|\bar{u}\|_{\mathbb{L}^\infty(0, T; \mathbb{H}^2(B(\cdot)))}^{\frac{2}{3-q^-}} \right), \\ \mu_\infty \|D(u^\varepsilon)\|_{\mathbb{L}^2([0, T]; \mathbb{L}^2(\Omega))}^2 + \frac{1}{\varepsilon} \|u^\varepsilon - \bar{u}\|_{\mathbb{L}^2([0, T]; \mathbb{L}^2(B(\cdot)))}^2 \\ \leq C \|f\|_{\mathbb{L}^2([0, T]; \mathbb{L}^2(\Omega))} \|\bar{u}\|_{\mathbb{L}^\infty([0, T]; \mathbb{H}^2(B(\cdot)))} + C' \|f\|_{\mathbb{L}^2([0, T]; \mathbb{L}^2(\Omega))}^2 \\ + C'' \max \left( \|\bar{u}\|_{\mathbb{L}^2([0, T]; \mathbb{H}^2(B(\cdot)))}^2, \|\bar{u}\|_{\mathbb{L}^2([0, T]; \mathbb{H}^2(B(\cdot)))}^{\frac{2}{3-q^-}} \right), \end{aligned}$$

where  $q^- = \inf\{q(\alpha), \alpha \in \mathbb{R}\} > 1$ .

In the same spirit as for the penalized problem, we define what is solution of the original problem in the moving domain. Then we state the convergence of the weak solution of the penalized toward the solution of the original problem (5), as well as its well-posedness, in theorem 1.2.

**Definition 1.4**  $(u, p, \alpha)$  is a solution to (5)-(7)-(8) if it fulfills

- $u \in \mathbb{L}^q(0, T; V(\Omega \setminus \bar{B}(\cdot)))$ ,  $p \in \mathbb{L}^q(0, T; \mathbb{L}_0^2(\Omega \setminus \bar{B}(\cdot)))$  with  $2 \leq q \leq +\infty$ ,
- $\alpha \in \mathbb{L}^\infty(0, T; \mathbb{H}^2(\Omega \setminus \bar{B}(\cdot))) \cap L^2(0, T; \mathbb{H}^3(\Omega \setminus \bar{B}(\cdot))) \cap \mathbb{H}^1(0, T; \mathbb{H}^1(\Omega \setminus \bar{B}(\cdot)))$ ,
- $u = \bar{u}$  in  $O_p$ ,
- $(u, p) \in \mathbb{L}^q(0, T; \mathbb{H}^1(\Omega \setminus \bar{B}(\cdot); \mathbb{R}^3)) \times \mathbb{L}^q(0, T; \mathbb{L}_0^2(\Omega \setminus \bar{B}(\cdot)))$  with  $2 \leq q \leq +\infty$  is the solution to  $\operatorname{div} u = 0$  in  $O_p^c$  and

$$-\operatorname{div}(2\mu(\alpha, D(u))D(u)) = f - \nabla p \in \mathbb{L}^2(0, T; \mathbb{H}^{-1}(\Omega \setminus \bar{B}(\cdot))),$$

satisfying the set of boundary conditions (7) and  $u|_\Sigma = \bar{u}|_\Sigma$  a.e.,

- $\alpha$  is the solution to  $\partial_t \alpha + u \cdot \nabla \alpha - \operatorname{div}(\sigma \nabla \alpha) = 0$  in  $O_p^c$  and satisfies the set of initial and boundary conditions (8).

**Theorem 1.2** Under the assumptions of Theorem 1.1, there exists a unique solution  $(u, p, \alpha)$  to (5)-(7)-(8). Moreover the weak solution  $(u^\varepsilon, p^\varepsilon, \alpha^\varepsilon)$  of (7)-(8)-(9) weakly converges towards  $(u, p, \alpha)$  as  $\varepsilon$  goes to zero.

Furthermore, many technical arguments are provided in Appendix A in order to build the proof of both theorems, detailed in section 3.

## 2 Mathematical aspects of the penalized equations

### 2.1 The generalized Stokes problem in a non moving domain

We are now interested in the following non-coupled penalized Stokes problem

$$\begin{cases} -\operatorname{div}(2\mu(x, u)D(u)) + \frac{\mathbf{1}_B}{\varepsilon}(u - \bar{u}) = f - \nabla p & \text{in } \Omega, \\ \mu(x, D(u)) = \mu_\infty + (\mu_0(x) - \mu_\infty)(1 + 2\beta(x)^2|D(u)|^2)^{\frac{q(x)}{2}-1} & \text{in } \Omega, \\ \operatorname{div} u = 0 & \text{in } \Omega, \end{cases} \quad (10)$$

where  $u$  satisfies the boundary conditions (7) and  $\varepsilon > 0$ . Since there is for instance no coupling we work with a viscosity  $\mu$  that only depends on  $x$  and  $u$ . In this problem, the given data are  $(\mu_0, \beta) \in (\mathcal{F}(\Omega; \mathbb{R}^+))^2$ ,  $q \in \mathcal{P}(\Omega)$  the set of all measurable functions on  $\Omega$  with values in  $[1, +\infty]$ , see also section A.1,  $B$  an open set in  $\Omega$ ,  $\bar{u} \in \mathcal{F}(B; \mathbb{R}^3)$  fulfilling  $\operatorname{div} \bar{u} = 0$ ,  $f \in \mathcal{F}(\Omega; \mathbb{R}^3)$ , and the unknowns are  $D(u) = (\nabla u + {}^t \nabla u)/2$  with  $u \in \mathcal{F}(\Omega; \mathbb{R}^3)$  and  $p \in \mathcal{F}(\Omega; \mathbb{R})$ .

First a time-independent problem is considered. To obtain the following results (H1) is assumed and an additional assumption is needed on  $\bar{u}$  (H5) which is a simpler time-independent version of (H3).

**Hypothesis 5 (H5)**

- $\bar{u} \in \mathbb{H}^2(B; \mathbb{R}^3)$ ,

- $\operatorname{div} \bar{u} = 0$  in  $B$ ,
- $\bar{u}_\perp = 0$  on  $\Gamma$ ,
- $\bar{u}$  follows the set of boundary conditions in (7).

In order to ensure well-posedness of equation (10),  $\bar{u}$  does not need to match the velocity of the  $B(t)$ , which is accessible via the applicatin  $\Psi$  in hypothesis (H2). Nevertheless, the goal of the coupled model and assumption (8) is to avoid the flux of  $\alpha$  into the body  $B(t)$ , so  $\bar{u}$  is required to match the body velocity field at the body boundary when the full systems (5) and (9) are considered. The remark holds for both the penalized problem (10) and the original non-penalized problem (14).

### 2.1.1 Existence and uniqueness

**Definition 2.1** We associate to the problem (10) the following variational formulation for all  $v \in V(\Omega)$ ,

$$\int_{\Omega} 2\mu(x, D(u))(D(u) : D(v)) dx + \frac{1}{\varepsilon} \int_B (u - \bar{u}) \cdot v dx = \int_{\Omega} f \cdot v dx. \quad (11)$$

**Theorem 2.1** Let

- $\varepsilon > 0, \mu_\infty > 0$ ,
- $\mu_0 \in \mathbb{L}^\infty(\Omega)$  such that for all  $x \in \Omega$ ,  $\mu_0(x) \geq \mu_\infty$ ,
- $\beta \in \mathbb{L}^\infty(\Omega)$  such that for all  $x \in \Omega$ ,  $\beta(x) \geq 0$ ,
- $q \in \mathcal{P}(\Omega)$  such that  $1 < q^- \leq q^+ \leq 2$ ,
- $\bar{u}$  fulfilling (H5),
- $f \in \mathbb{L}^2(\Omega; \mathbb{R}^3)$ .

Then there exists a unique  $(u, p) \in V(\Omega) \times \mathbb{L}_0^2(\Omega)$  solution of (10).

**Proof.** This proof is inspired from various results from [4] section II.3.2 and from [14] but is adapted to the non-linear case using Theorem A.12. We use the notation  $V = V(\Omega)$ . We let

$$a(u, v) = \int_{\Omega} 2\mu(x, D(u))D(u) : D(v) dx + \frac{1}{\varepsilon} \int_B uv dx$$

for all  $(u, v) \in V^2$ . Then

$$\begin{aligned} |a(u, v)| &= \left| \int_{\Omega} 2 \left( \mu_\infty + (\mu_0 - \mu_\infty)(1 + 2\beta(x)^2 D(u) : D(u))^{\frac{q(x)}{2} - 1} \right) D(u) : D(v) dx + \frac{1}{\varepsilon} \int_B uv dx \right| \\ &\leq 2\mu_\infty \|D(u)\|_{\mathbb{L}^2(\Omega)} \|D(v)\|_{\mathbb{L}^2(\Omega)} + \frac{1}{\varepsilon} \|u\|_{\mathbb{L}^2(B)} \|v\|_{\mathbb{L}^2(B)} \\ &\quad + \int_{\Omega} 2(\mu_0 - \mu_\infty) 2^{\frac{q(x)}{2} - 2} \left( 1 + (\sqrt{2}\beta(x))^{q(x)-2} |D(u)|^{q(x)-2} \right) |D(u)| |D(v)| dx \\ &\leq 2\mu_\infty \|D(u)\|_{\mathbb{L}^2(\Omega)} \|D(v)\|_{\mathbb{L}^2(\Omega)} + \frac{1}{\varepsilon} \|u\|_{\mathbb{L}^2(B)} \|v\|_{\mathbb{L}^2(B)} + 2\|(\mu_0 - \mu_\infty) 2^{\frac{q(x)}{2} - 2}\|_\infty \|D(u)\|_{\mathbb{L}^2(\Omega)} \|D(v)\|_{\mathbb{L}^2(\Omega)} \\ &\quad + 2\|(\mu_0 - \mu_\infty) 2^{q(x)-3} \beta(x)^{q(x)-2}\|_\infty \left( \left( \frac{1}{q(x)} \right)^+ + \left( \frac{1}{q'(x)} \right)^+ \right) \| |D(u)|^{q(x)-1} \|_{\mathbb{L}^{q'(\cdot)}(\Omega)} \|D(v)\|_{\mathbb{L}^{q(\cdot)}(\Omega)}. \end{aligned}$$

It follows that

$$\begin{aligned} |a(u, v)| &\leq C \|D(u)\|_{\mathbb{L}^2(\Omega)} \|D(v)\|_{\mathbb{L}^2(\Omega)} + \frac{1}{\varepsilon} \|u\|_{\mathbb{L}^2(B)} \|v\|_{\mathbb{L}^2(B)} \\ &\quad + C \|D(v)\|_{\mathbb{L}^{q(\cdot)}(\Omega)} \max \left( \|D(u)\|_{\mathbb{L}^{q(\cdot)}(\Omega)}^{q^- - 1}, \|D(u)\|_{\mathbb{L}^{q(\cdot)}(\Omega)}^{q^+ - 1} \right) \\ &\leq C \left( \|D(u)\|_{\mathbb{L}^2(\Omega)} + \max \left( \|D(u)\|_{\mathbb{L}^2(\Omega)}^{q^- - 1}, \|D(u)\|_{\mathbb{L}^2(\Omega)}^{q^+ - 1} \right) \right) \|D(v)\|_{\mathbb{L}^2(\Omega)} + \frac{1}{\varepsilon} \|u\|_{\mathbb{L}^2(B)} \|v\|_{\mathbb{L}^2(B)} \\ &\leq C \max \left( \|D(u)\|_{\mathbb{L}^2(\Omega)}^{q^- - 1}, \|D(u)\|_{\mathbb{L}^2(\Omega)} \right) \|D(v)\|_{\mathbb{L}^2(\Omega)} + \frac{1}{\varepsilon} \|u\|_{\mathbb{L}^2(B)} \|v\|_{\mathbb{L}^2(B)} \\ &\leq C_\varepsilon \max \left( \|D(u)\|_{\mathbb{L}^2(\Omega)}^{q^- - 1}, \|D(u)\|_{\mathbb{L}^2(\Omega)} \right) \|D(v)\|_{\mathbb{L}^2(\Omega)}. \end{aligned}$$

The function  $v \mapsto a(u, v)$  is well defined from  $V$  to  $\mathbb{R}$ , linear and continuous if  $u \in V$ . Thanks to the Riesz theorem, for all  $u \in V$  there exists a unique  $A(u) \in V'$  such that  $a(u, v) = \langle A(u), v \rangle$ . The function  $A : V \rightarrow V'$  is well defined and bounded.

The function  $\lambda \mapsto a(u + \lambda u', v)$  is continuous from  $\mathbb{R}$  to  $\mathbb{R}$  thanks to the dominated convergence theorem for all  $(u, u', v) \in V^3$ . Thanks to Lemma A.10 we have

$$\begin{aligned} < A(u) - A(v), u - v > = \int_{\Omega} 2\mu_{\infty} |D(u) - D(v)|^2 dx + \frac{1}{\varepsilon} \int_B |u - v|^2 dx \\ & + \int_{\Omega} 2(\mu_0 - \mu_{\infty}) \left[ (1 + 2\beta^2(x) |D(u)|^2)^{q(x)/2-1} D(u) \right. \\ & \left. - (1 + 2\beta^2(x) |D(v)|^2)^{q(x)/2-1} D(v) \right] : (D(u) - D(v)) dx \geq \int_{\Omega} 2\mu_{\infty} |D(u) - D(v)|^2 dx \geq 0. \end{aligned}$$

Since  $\mu_0 \geq \mu_{\infty}$ , thanks to the Korn's and Poincaré's inequalities:

$$\begin{aligned} \int_{\Omega} 2\mu |D(u)|^2 dx + \frac{1}{\varepsilon} \int_B |u|^2 dx & \geq \int_{\Omega} 2\mu_{\infty} |D(u)|^2 dx + \int_{\Omega} 2(\mu_0 - \mu_{\infty}) (1 + 2\beta^2(x) |D(u)|^2)^{\frac{q(x)}{2}-1} |D(u)|^2 dx \\ & \geq 2\mu_{\infty} \|D(u)\|_{\mathbb{L}^2(\Omega)}^2 \geq C \|u\|_{\mathbb{H}^1(\Omega)}^2. \end{aligned}$$

Consequently  $\frac{|a(u, u)|}{\|u\|_{\mathbb{H}^1(\Omega)}} \rightarrow +\infty$  as  $\|u\|_{\mathbb{H}^1(\Omega)} \rightarrow +\infty$ . Moreover the function  $L : V \rightarrow \mathbb{R}$  defined by

$$L(v) = \int_{\Omega} f \cdot v dx + \frac{1}{\varepsilon} \int_B \bar{u} \cdot v dx$$

is well defined, linear and continuous since

$$|L(v)| \leq \|f\|_{\mathbb{L}^2(\Omega)} \|v\|_{\mathbb{L}^2(\Omega)} + \frac{1}{\varepsilon} \|\bar{u}\|_{\mathbb{L}^2(B)} \|v\|_{\mathbb{L}^2(B)} \leq C \|v\|_{\mathbb{H}^1(\Omega)},$$

so the function  $L$  is in  $V'$ . Thanks to the non-linear Lax-Milgram Theorem A.12 there exists a weak solution  $u \in V$  such that  $A(u) = L$ .

Let  $(u, v) \in V^2$  two weak solutions of (10). Then

$$\begin{aligned} < A(u) - A(v), u - v > & = < 0, u - v > = 0 \\ & \geq \int_{\Omega} 2\mu_{\infty} |D(u - v)|^2 dx \geq C \|u - v\|_{\mathbb{H}^1(\Omega)}^2. \end{aligned}$$

The solution is then unique and the end of the proof is classical. Indeed, the first part of the proof implies that  $g = -\operatorname{div}(2\mu D(u)) + \frac{\mathbf{1}_B}{\varepsilon}(u - \bar{u}) - f$  belongs to  $\mathbb{H}^{-1}(\Omega)$ . Testing this function against a function  $\phi \in \mathbb{H}_0^1(\Omega)$  such that  $\operatorname{div}\phi = 0$  we obtain:

$$< g, \phi >_{\mathbb{H}^{-1}(\Omega), \mathbb{H}_0^1(\Omega)} = \int_{\Omega} 2\mu(x, D(u)) D(u) : D(\phi) dx + \frac{1}{\varepsilon} \int_B (u - \bar{u}) \phi dx - \int_{\Omega} f \phi dx = 0.$$

De Rham's theorem induces the existence of a function  $p \in \mathbb{L}_0^2(\Omega)$  such that  $g = -\nabla p$ . We now verify that the last boundary conditions are fulfilled. The function  $g + \nabla p$  rewrites

$$g + \nabla p = -\operatorname{div}(2\mu(x, D(u)) D(u) - pI) + \frac{\mathbf{1}_B}{\varepsilon}(u - \bar{u}) - f = 0.$$

From this expression we deduce that  $2\mu(x, u) D(u) - pI$  lies in

$$\mathbb{H}_{\operatorname{div}} = \{v \in \mathbb{L}^2(\Omega), \operatorname{div} v \in \mathbb{L}^2(\Omega)\}$$

and admits a normal trace in  $\mathbb{H}^{-1/2}(\partial\Omega)$ . For all  $\phi \in V(\Omega)$ ,

$$\begin{aligned} < g + \nabla p, \phi >_{\mathbb{H}^{-1}(\Omega), \mathbb{H}_0^1(\Omega)} & = 0 \\ & = \int_{\Omega} (2\mu(x, D(u)) D(u) : D(\phi) - p \operatorname{div}\phi) dx - \int_{\partial\Omega} (2\mu(x, D(u)) D(u) \cdot \nu \phi - p \nu \cdot \phi) d\sigma \\ & \quad + \frac{1}{\varepsilon} \int_B (u - \bar{u}) \phi dx - \int_{\Omega} f \phi dx. \end{aligned}$$

Since  $\operatorname{div}\phi = 0$  and thanks to (11) expressed with  $v = \phi$  and to the boundary conditions already fulfilled by  $u$  and  $\phi$  we obtain

$$\begin{aligned} & \sum_{i \in \{1..I\}} \int_{\Gamma_i} (2\mu D(u) - pI) \nu \cdot \phi d\sigma \\ & = \sum_{i \in \{1..I\}} < (2\mu D(u) - pI) \nu, \phi >_{\mathbb{H}^{-1/2}(\Gamma_i), \mathbb{H}^{1/2}(\Gamma_i)} \\ & = \sum_{i \in \{1..I\}} < (1 - \theta_i) (2\mu D(u) \nu), \phi >_{\mathbb{H}^{-1/2}(\Gamma_i), \mathbb{H}^{1/2}(\Gamma_i)} = 0 \end{aligned}$$

for all  $\phi \in V(\Omega)$ .

For all  $i \in \{1..I\}$ , let  $\psi_i \in \mathbb{H}^{1/2}(\Gamma_i)$ . There exists a lifting  $\phi \in V(\Omega)$  such that  $\phi \cdot \nu = 0$ ,  $\theta_i \phi_{\parallel} = 0$  and  $(1 - \theta_i) \phi_{\parallel} = \psi_i$  on  $\Gamma_i$  (see [4] section III.4 for example). Then for all  $\psi \in \mathbb{H}^{1/2}(\Gamma_i)$  with  $i \in \{1..I\}$ , we obtain thanks to its lifting in  $V(\Omega)$  that

$$\sum_{i \in \{1..I\}} \langle 2\mu D(u)\nu, \phi \rangle_{\mathbb{H}^{-1/2}(\Gamma_i), \mathbb{H}^{1/2}(\Gamma_i)} = \sum_{i \in \{1..I\}} \langle (1 - \theta_i)(2\mu D(u)\nu), \psi_i \rangle_{\mathbb{H}^{-1/2}(\Gamma_i), (\mathbb{H}^{1/2}(\Gamma_i))} = 0,$$

and then that for all  $i \in \{1..I\}$ , one has  $(1 - \theta_i)(2\mu D(u)\nu) = 0$  in  $\mathbb{H}^{-1/2}(\Gamma_i)$ . Since  $\Gamma_i$  is assumed to be flat (no curvature), so  $\nu$  is constant and can be extended to a tubular neighborhood of  $\Gamma_i$ , this writes:

$$(1 - \theta_i) \left( 2\mu \frac{\partial u}{\partial \nu} + 2\mu \nabla(u \cdot \nu)_{\Gamma_i} \right) = 0 \text{ in } \mathbb{H}^{-1/2}(\Gamma_i), \quad i = 1..I.$$

Since  $\mu \geq \mu_0 > 0$ ,  $u \cdot \nu \in \mathbb{H}^{1/2}(\Gamma_i)$  and  $u \cdot \nu = 0$  on  $\Gamma_i$  we have  $\nabla_{\parallel}(u \cdot \nu) = 0$ , thus

$$\nabla(u \cdot \nu) = \nu \cdot \nabla(u \cdot \nu) + \nabla_{\parallel}(u \cdot \nu) = \frac{\partial u \cdot \nu}{\partial \nu}$$

and we finally get, by means of tangential projection, that  $(1 - \theta_i) \frac{\partial u_{\parallel}}{\partial \nu} = 0$  on  $\Gamma_i$ ,  $i = 1..I$ .

Hence  $(u, p) \in V(\Omega) \times \mathbb{L}_0^2(\Omega)$  is the solution to the Stokes problem (10). ■

### 2.1.2 “Harmonic” prolongation of $\bar{u}$

To obtain precise estimates on  $(u, p)$  we need a prolongation  $\tilde{u}$  of  $\bar{u}$  in the whole domain  $\Omega$ . We study the following system:

$$\begin{cases} -\operatorname{div}(2\mu_{\infty} D(\tilde{u})) = -\nabla \tilde{p} & \text{in } \Omega \setminus \bar{B}, \\ \operatorname{div} \tilde{u} = 0 & \text{in } \Omega \setminus \bar{B}, \\ \tilde{u} = \bar{u} & \text{on } \partial B \setminus \partial \Omega, \\ \tilde{u} & \text{satisfies the boundary conditions in (7).} \end{cases} \quad (12)$$

**Proposition 2.2** *We assume (H1)-(H5). There exists a unique weak solution  $(\tilde{u}, \tilde{p})$  of (12) with  $\tilde{u} \in \mathbb{H}^1(\Omega \setminus \bar{B}; \mathbb{R}^3)$  and  $\tilde{p} \in \mathbb{L}_0^2(\Omega \setminus \bar{B})$ . Moreover there exists a constant  $C$  depending on  $\Omega \setminus \bar{B}$  such that*

$$\|\tilde{u}\|_{\mathbb{H}^1(\Omega \setminus \bar{B})} + \|\tilde{p}\|_{\mathbb{L}_0^2(\Omega \setminus \bar{B})} \leq C \|\bar{u}\|_{\mathbb{H}^2(B)}.$$

**Proof.** cf [14] ■

**Proposition 2.3** *Under the assumptions of Prop. 2.2, we let  $P(\bar{u}) = \mathbf{I}_B \bar{u} + \mathbf{I}_{\Omega \setminus B} \tilde{u}$ . Then  $P(\bar{u}) \in V(\Omega)$  and there exists a constant  $C$  depending on  $B$  (and  $\Omega$ ) such that*

$$\|P(\bar{u})\|_{\mathbb{H}^1(\Omega)} \leq C \|\bar{u}\|_{\mathbb{H}^2(B)}.$$

### 2.1.3 Estimates on $(u, p)$

Under the assumptions of Theorem 2.1 and Proposition 2.2 we let  $(u, p)$  be the unique weak solution to (10) given by Theorem 2.1. Applying (11) with  $v = u - P(\bar{u})$ , we obtain

$$\begin{aligned} & \int_{\Omega} 2\mu(x, D(u)) |D(u)|^2 dx + \frac{1}{\varepsilon} \|u - \bar{u}\|_{\mathbb{L}^2(B)}^2 \\ & \leq \|f\|_{\mathbb{L}^2(\Omega)} (\|u\|_{\mathbb{L}^2(\Omega)} + \|P(\bar{u})\|_{\mathbb{L}^2(\Omega)}) + \int_{\Omega} 2\mu(x, D(u)) (D(u) : D(P(\bar{u}))) dx, \\ & \leq \|f\|_{\mathbb{L}^2(\Omega)} (\|u\|_{\mathbb{L}^2(\Omega)} + \|P(\bar{u})\|_{\mathbb{L}^2(\Omega)}) + C \max \left( \|D(u)\|_{\mathbb{L}^2(\Omega)}^{\frac{q-1}{q}}, \|D(u)\|_{\mathbb{L}^2(\Omega)} \right) \|D(P(\bar{u}))\|_{\mathbb{L}^2(\Omega)} \\ & \leq C \|f\|_{\mathbb{L}^2(\Omega)} \|\bar{u}\|_{\mathbb{H}^2(B)} + C \|f\|_{\mathbb{L}^2(\Omega)}^2 + C \max \left( \|D(P(\bar{u}))\|_{\mathbb{L}^2(\Omega)}^{\frac{2}{3-q}}, \|D(P(\bar{u}))\|_{\mathbb{L}^2(\Omega)}^2 \right) + \mu_{\infty} \|D(u)\|_{\mathbb{L}^2(\Omega)}^2 \end{aligned}$$

hence

$$\mu_{\infty} \|D(u)\|_{\mathbb{L}^2(\Omega)}^2 + \frac{1}{\varepsilon} \|u - \bar{u}\|_{\mathbb{L}^2(B)}^2 \leq C \|f\|_{\mathbb{L}^2(\Omega)} \|\bar{u}\|_{\mathbb{H}^2(B)} + C \|f\|_{\mathbb{L}^2(\Omega)}^2 + C \max \left( \|\bar{u}\|_{\mathbb{H}^2(B)}^{\frac{2}{3-q}}, \|\bar{u}\|_{\mathbb{H}^2(B)}^2 \right). \quad (13)$$

From (10), we deduce

$$\begin{aligned}
& \|\nabla p\|_{\mathbb{H}^{-1}(\Omega)} \\
& \leq \|f\|_{\mathbb{H}^{-1}(\Omega)} + \|\operatorname{div}(2\mu D(u))\|_{\mathbb{H}^{-1}(\Omega)} + \frac{1}{\varepsilon} \|\mathbf{1}_B(u - \bar{u})\|_{\mathbb{H}^{-1}(\Omega)} \\
& \leq \|f\|_{\mathbb{L}^2(\Omega)} + \|2\mu(x, D(u))D(u)\|_{\mathbb{L}^2(\Omega)} + \frac{1}{\varepsilon} \|u - \bar{u}\|_{\mathbb{L}^2(B)} \\
& \leq \|f\|_{\mathbb{L}^2(\Omega)} + \frac{1}{\varepsilon} \|u - \bar{u}\|_{\mathbb{L}^2(B)} + 2\mu_\infty \|D(u)\|_{\mathbb{L}^2(\Omega)} \\
& \quad + \|2^{\frac{q(x)}{2}-1}(\mu_0 - \mu_\infty)\|_\infty \|D(u)\|_{\mathbb{L}^2(\Omega)} + \|2^{\frac{q(x)}{2}-1}(\mu_0 - \mu_\infty)\beta^{q(x)-2}\|_\infty \| |D(u)|^{q(x)-1} \|_{\mathbb{L}^2(\Omega)} \\
& \leq \|f\|_{\mathbb{L}^2(\Omega)} + \frac{1}{\varepsilon} \|u - \bar{u}\|_{\mathbb{L}^2(B)} + 2\mu_\infty \|D(u)\|_{\mathbb{L}^2(\Omega)} \\
& \quad + \|2^{\frac{q(x)}{2}-1}(\mu_0 - \mu_\infty)\|_\infty \|D(u)\|_{\mathbb{L}^2(\Omega)} \\
& \quad + C \|2^{\frac{p(x)}{2}-1}(\mu_0 - \mu_\infty)\beta^{q(x)-2}\|_\infty \left( \max \left( \|D(u)\|_{\mathbb{L}^{2q(\cdot)-2}(\Omega)}^{2q^- - 2}, \|D(u)\|_{\mathbb{L}^{2q(\cdot)-2}(\Omega)}^{2q^+ - 2} \right) \right)^{1/2} \\
& \leq \|f\|_{\mathbb{L}^2(\Omega)} + \frac{1}{\varepsilon} \|u - \bar{u}\|_{\mathbb{L}^2(B)} + 2\mu_\infty \|D(u)\|_{\mathbb{L}^2(\Omega)} \\
& \quad + \|2^{\frac{q(x)}{2}-1}(\mu_0 - \mu_\infty)\|_\infty \|D(u)\|_{\mathbb{L}^2(\Omega)} + C \|2^{\frac{q(x)}{2}-1}(\mu_0 - \mu_\infty)\beta^{q(x)-2}\|_\infty \max \left( \|D(u)\|_{\mathbb{L}^2(\Omega)}^{q^- - 1}, \|D(u)\|_{\mathbb{L}^2(\Omega)}^{q^+ - 1} \right)
\end{aligned}$$

Since the mean of  $p$  is zero, Poincaré's lemma gives

$$\begin{aligned}
\|p\|_{\mathbb{L}_0^2(\Omega)} & \leq C \left[ \|f\|_{\mathbb{L}^2(\Omega)} + \frac{1}{\varepsilon} \|u - \bar{u}\|_{\mathbb{L}^2(B)} + 2\mu_\infty \|D(u)\|_{\mathbb{L}^2(\Omega)} + \left\| 2^{\frac{q(x)}{2}-1}(\mu_0 - \mu_\infty) \right\|_\infty \|D(u)\|_{\mathbb{L}^2(\Omega)} \right. \\
& \quad \left. + C' \left\| 2^{\frac{q(x)}{2}-1}(\mu_0 - \mu_\infty)\beta^{q(x)-2} \right\|_\infty \max \left( \|D(u)\|_{\mathbb{L}^2(\Omega)}^{q^- - 1}, \|D(u)\|_{\mathbb{L}^2(\Omega)}^{q^+ - 1} \right) \right].
\end{aligned}$$

## 2.2 The generalized Stokes problem in a time-dependent domain

Let  $T > 0$ . In the following the domain  $B$  depends on the time  $t \in [0, T]$  and we need to track the dependency on time  $t$  of the constants (especially the ones in all Sobolev related theorems). Using classical trace and lifting theorems (on the domain  $B(t)$  or  $\Omega \setminus \bar{B}(t)$ ) there appear to be some constants depending on  $B(t)$  and  $\Omega \setminus \bar{B}(t)$ . Thanks to the Proposition A.6 we can estimate the time-behaviour of these constants.

**Proposition 2.4 (Time dependent “harmonic” lifting)** *Assuming (H1)-(H2)-(H3) and  $\mu_\infty > 0$ , there exists a unique weak solution  $(\tilde{u}, \tilde{p})$  to*

$$\begin{cases} -2\operatorname{div}(\mu_\infty D(\tilde{u})) = -\nabla \tilde{p} & \text{in } O_p^c, \\ \operatorname{div} \tilde{u} = 0 & \text{in } O_p^c, \\ \tilde{u} = \bar{u} & \text{a.e. on } \Sigma, \\ \tilde{u} \text{ satisfies the boundary conditions (7),} \end{cases} \quad (14)$$

where  $\tilde{u} \in L^\infty(0, T; \mathbb{H}^1(\Omega \setminus \bar{B}(\cdot); \mathbb{R}^3))$  and  $\tilde{p} \in \mathbb{L}^\infty(0, T; \mathbb{L}_0^2(\Omega \setminus \bar{B}(\cdot)))$ .

Moreover there exists a constant  $C$  depending on  $B$  and  $\Psi$  such that for all  $1 \leq q \leq +\infty$

$$\|\tilde{u}\|_{\mathbb{L}^q(0, T; \mathbb{H}^1(\Omega \setminus \bar{B}(\cdot)))} + \|\tilde{p}\|_{\mathbb{L}^q(0, T; \mathbb{L}_0^2(\Omega \setminus \bar{B}(\cdot)))} \leq C \|\bar{u}\|_{\mathbb{H}^3(O_p)}.$$

**Proof.** see [14]. ■

**Proposition 2.5** *Under the assumptions of Proposition 2.4 we let  $P(\bar{u}) = \mathbf{I}_{O_p} \bar{u} + \mathbf{I}_{O_p^c} \tilde{u}$ . Then  $P(\bar{u}) \in \mathbb{L}^\infty(0, T; V(\Omega))$  and there exists a constant  $C$  depending on  $B$  and  $\Psi$  such that for all  $1 \leq q \leq +\infty$ ,  $\|P(\bar{u})\|_{\mathbb{L}^q(0, T; \mathbb{H}^1(\Omega))} \leq C \|\bar{u}\|_{\mathbb{L}^\infty([0, T]; \mathbb{H}^2(B(\cdot)))}$ .*

Following the scheme used in section 2.1 we obtain the following theorem.

**Theorem 2.6** *We assume (H1), (H2) and (H3). Let*

- $\varepsilon > 0$ ,  $\mu_\infty > 0$ ,  $T > 0$ ,
- $\mu \in \mathbb{L}^\infty([0, T] \times \Omega)$  such that for all  $(t, x) \in [0, T] \times \Omega$ ,  $\mu_0(t, x) \geq \mu_\infty$ ,
- $\beta \in \mathbb{L}^\infty([0, T] \times \Omega)$  such that for all  $(t, x) \in [0, T] \times \Omega$ ,  $\beta(t, x) \geq 0$ ,
- $q \in \mathbb{L}^\infty([0, T] \times \Omega)$  such that for all  $t \in [0, T]$   $q(t, \cdot) \in \mathcal{P}(\Omega)$  and  $1 < q^- \leq q^+ \leq 2$ ,
- $f \in \mathbb{L}^\infty(0, T; \mathbb{L}^2(\Omega; \mathbb{R}^3))$ .



Then there exists a unique weak solution  $(u, p)$  to the problem

$$\begin{cases} -\operatorname{div}(2\mu(x, u)D(u)) + \frac{\mathbf{I}_{B(t)}}{\varepsilon}(u - \bar{u}) = f - \nabla p & \text{in } [0, T] \times \Omega, \\ \operatorname{div} u = 0 & \text{in } [0, T] \times \Omega, \\ u \text{ satisfies the set of boundary conditions (7),} \end{cases} \quad (15)$$

which fulfills  $(u, p) \in \mathbb{L}^r([0, T], V(\Omega)) \times \mathbb{L}^r([0, T]; \mathbb{L}_0^2(\Omega))$  for all  $2 \leq r \leq +\infty$ . We also have the following inequalities:

$$\begin{aligned} & \mu_\infty \|D(u)\|_{\mathbb{L}^\infty([0, T]; \mathbb{L}^2(\Omega))}^2 + \frac{1}{\varepsilon} \|u - \bar{u}\|_{\mathbb{L}^\infty([0, T]; \mathbb{L}^2(B(\cdot)))}^2 \\ & \leq C \|f\|_{\mathbb{L}^\infty([0, T]; \mathbb{L}^2(\Omega))} \|\bar{u}\|_{\mathbb{L}^\infty([0, T]; \mathbb{H}^2(B(\cdot)))} + C' \|f\|_{\mathbb{L}^\infty([0, T]; \mathbb{L}^2(\Omega))}^2 \\ & \quad + C'' \max \left( \|\bar{u}\|_{\mathbb{L}^\infty(0, T; \mathbb{H}^2(B(\cdot)))}^2, \|\bar{u}\|_{\mathbb{L}^\infty(0, T; \mathbb{H}^2(B(\cdot)))}^{\frac{2}{3-q}} \right) \end{aligned}$$

and

$$\begin{aligned} & \mu_\infty \|D(u)\|_{\mathbb{L}^2([0, T]; \mathbb{L}^2(\Omega))}^2 + \frac{1}{\varepsilon} \|u - \bar{u}\|_{\mathbb{L}^2([0, T]; \mathbb{L}^2(B(\cdot)))}^2 \\ & \leq C \|f\|_{\mathbb{L}^2([0, T]; \mathbb{L}^2(\Omega))} \|\bar{u}\|_{\mathbb{L}^\infty([0, T]; \mathbb{H}^2(B(\cdot)))} + C' \|f\|_{\mathbb{L}^2([0, T]; \mathbb{L}^2(\Omega))}^2 \\ & \quad + C'' \max \left( \|\bar{u}\|_{\mathbb{L}^2([0, T]; \mathbb{H}^2(B(\cdot)))}^2, \|\bar{u}\|_{\mathbb{L}^{\frac{2}{3-q}}([0, T]; \mathbb{H}^2(B(\cdot)))}^{\frac{2}{3-q}} \right). \end{aligned}$$

### 2.3 The convection-diffusion equation in a time-dependent domain

**Theorem 2.7** We assume (H1) and (H2). Let  $\sigma > 0$  and  $u \in \mathbb{L}^\infty(0, T; V(\Omega))$ . Let  $\alpha_0 \in \mathbb{H}^1(\Omega \setminus \bar{B}(0))$ . There exists a unique solution  $\alpha \in \mathbb{L}^\infty(0, T; \mathbb{H}^1(\Omega \setminus \bar{B}(\cdot))) \cap \mathbb{L}^2(0, T; \mathbb{H}^2(\Omega \setminus \bar{B}(\cdot))) \cap \mathbb{H}^1(0, T; \mathbb{L}^2(\Omega \setminus \bar{B}(\cdot)))$  to the problem

$$\partial_t \alpha + u \cdot \nabla \alpha - \operatorname{div}(\sigma \nabla \alpha) = 0 \quad \text{in } O_p^c,$$

where  $\alpha$  follows the set of initial and boundary conditions (8). Moreover if  $\alpha_0 \in \mathbb{H}^2(\Omega \setminus \bar{B}(0))$  and fulfills the boundary conditions described in (8) then  $\alpha \in \mathbb{L}^\infty(0, T; \mathbb{H}^2(\Omega \setminus \bar{B}(\cdot))) \cap \mathbb{L}^2(0, T; \mathbb{H}^3(\Omega \setminus \bar{B}(\cdot))) \cap \mathbb{H}^1(0, T; \mathbb{H}^1(\Omega \setminus \bar{B}(\cdot)))$  and there exist some constants  $C$  and  $C'$  depending only on  $\Omega$  and  $\sigma$  such that for all  $t \in [0, T]$ :

$$\|\alpha(t, \cdot)\|_{\mathbb{H}^2(\Omega \setminus \bar{B}(t))} \leq C \|\alpha_0\|_{\mathbb{H}^2(\Omega \setminus \bar{B}(0))} \exp \left( C' t \left( 1 + \|u\|_{\mathbb{L}^\infty(0, T; \mathbb{H}^1(\Omega))}^2 + \|u\|_{\mathbb{L}^\infty(0, T; \mathbb{H}^1(\Omega))}^4 \right) \right)$$

and

$$\|\alpha\|_{\mathbb{L}^2(0, T; \mathbb{H}^3(\Omega \setminus \bar{B}(\cdot)))} \leq C \|\alpha_0\|_{\mathbb{H}^2(\Omega \setminus \bar{B}(0))} \exp \left( C' t \left( 1 + \|u\|_{\mathbb{L}^\infty(0, T; \mathbb{H}^1(\Omega))}^2 + \|u\|_{\mathbb{L}^\infty(0, T; \mathbb{H}^1(\Omega))}^4 \right) \right).$$

**Proof.** In order to deal with the variable domain we use the diffeomorphism  $\Psi$  defined in hypothesis (H2) to rewrite the equation in a fixed domain but with time-dependent differential operators. We let  $\beta(t, y) = \alpha(t, \Psi(t, y))$  for all  $t \in [0, T]$  and  $y \in \Omega \setminus \bar{B}$ . In the following we note  $\Psi_t(y)$  instead of  $\Psi(t, y)$ .  $\beta$  fulfills

$$\begin{cases} \partial_t \beta + v(t, y) \cdot {}^t J_t(y)^{-1} \nabla \beta - \sigma A(t, y) \beta = 0 & \text{in } \Omega \setminus \bar{B}, \\ (J_t(y)^{-1} {}^t J_t(y)^{-1} \nabla \beta) \cdot \nu = 0 & \text{on } (\partial(\Omega \setminus \bar{B}) \cap \Omega) \cup \Gamma, \\ \beta \text{ has periodic conditions otherwise,} \\ \beta(0, \cdot) = \alpha_0(\Psi_0(\cdot)) & \text{in } \Omega \setminus \bar{B}, \end{cases} \quad (16)$$

where  $\nu$  is the outward unitary normal to  $\partial(\Omega \setminus \bar{B})$ ,  $J_t(y)$  is the Jacobian matrix of  $y \mapsto \Psi_t(y)$ ,  $v(t, y) = u(t, \Psi_t(y)) - \partial_t \Psi_t(y)$  and

$$A(t, y) \beta = \operatorname{div}(\mathbf{1}_{\Omega \setminus \bar{B}}(y) ({}^t J_t(y) J_t(y))^{-1} \nabla \beta). \quad (17)$$

Since we have assumed that  $\Psi$  preserves the measure we have  $|\det J_t(y)| = 1$  for all  $(t, y) \in [0, T] \times \Omega$  hence we get the expression of the operator  $A$ . This also allows us to work with the classical Lebesgue and Sobolev spaces instead of weighted ones (with a dependence on time). This assumption also leads to  $\operatorname{div} J_t^{-1}(y) \partial_t \Psi(t, y) = 0$  for all  $(t, y) \in [0, T] \times \Omega \setminus \bar{B}$  and implies that  $\operatorname{div}(J_t(y)^{-1} v(t, y)) = 0$ .

Instead of using a Galerkin's method where the time-dependence of the eigenfunctions of  $A$  will be problematic we discretize in time the equation to prove the existence of solutions. Let  $N \in \mathbb{N}^*$ ,  $h = \frac{T}{N}$  and  $t^n = nh$ . We are looking for  $\beta^n(y)$  approximation of  $\beta(t^n, y)$ , which is the solution of the following implicit numerical scheme:

$$\begin{cases} \frac{\beta^{n+1} - \beta^n}{h} + v^{n+1} \cdot {}^t J_{t^{n+1}}(y)^{-1} \nabla \beta^{n+1} - \sigma A(t^{n+1}, y) \beta^{n+1} = 0 & \text{in } \Omega \setminus \bar{B}, \\ (J_{t^{n+1}}^{-1} {}^t J_{t^{n+1}}(y)^{-1} \nabla \beta^{n+1}) \cdot \nu = 0 & \text{on } (\partial(\Omega \setminus \bar{B}) \cap \Omega) \cup \Gamma =: \gamma, \\ \beta^{n+1} \text{ has periodic conditions otherwise,} \\ \beta^0 = \beta(0, \cdot) = \alpha_0(\Psi_0(\cdot)) & \text{in } \Omega \setminus \bar{B}, \end{cases} \quad (18)$$

where  $v^{n+1}(y) = \frac{1}{h} \int_{t^n}^{t^{n+1}} (u(t, \Psi_t(y)) - (\partial_t \Psi_t(y))) dt$ .

By taking the scalar product of the equation with  $\beta' \in \mathbb{H}^2(\Omega \setminus \bar{B})$  fulfilling the same boundary conditions and integrating by parts, we get

$$\begin{aligned} & a(\beta^{n+1}, \beta') \\ &:= \int_{\Omega \setminus \bar{B}} \beta^{n+1} \beta' + h \sigma \left( {}^t J_{t^{n+1}}^{-1} \nabla \beta^{n+1} \right) \cdot \left( {}^t J_{t^{n+1}}^{-1} \nabla \beta' \right) + h v^{n+1} \cdot \left( {}^t J_{t^{n+1}}^{-1} \nabla \beta^{n+1} \right) \beta' dx \\ &= L(\beta') := \int_{\Omega \setminus \bar{B}} \beta^n \beta' dx. \end{aligned} \quad (19)$$

This formulation is well-posed in  $\mathbb{H}^1(\Omega \setminus \bar{B})$ . Thanks to the regularity of  $\Psi$ , the operator  $L$  is linear and continuous on  $\mathbb{H}^1(\Omega \setminus \bar{B})$  and  $a$  is bilinear and continuous on  $(\mathbb{H}^1(\Omega \setminus \bar{B}))^2$ . Moreover

$$\begin{aligned} a(\beta, \beta) &\geq \|\beta\|_2^2 + h \sigma \| {}^t J_{t^{n+1}}^{-1} \nabla \beta \|_2^2 - h \|v^{n+1}\|_6 \|\beta\|_3 \| {}^t J_{t^{n+1}}^{-1} \nabla \beta \|_2 \\ &\geq \|\beta\|_2^2 + h \sigma \| {}^t J_{t^{n+1}}^{-1} \nabla \beta \|_2^2 - Ch \|v^{n+1}\|_6 \| {}^t J_{t^{n+1}}^{-1} \nabla \beta \|_2 \|\beta\|_2^{1/2} \|\beta\|_{\mathbb{H}^1}^{1/2} \\ &\geq \|\beta\|_2^2 + h \sigma \| {}^t J_{t^{n+1}}^{-1} \nabla \beta \|_2^2 - Ch \|v^{n+1}\|_6 \| {}^t J_{t^{n+1}}^{-1} \nabla \beta \|_2 \|\beta\|_2^{1/2} \\ &\quad \times \left( \|\beta\|_2^{1/2} + C \| {}^t J_{t^{n+1}}^{-1} \nabla \beta \|_2^{1/2} \right) \\ &\geq (1 - Ch (\|v^{n+1}\|_6^2 + \|v^{n+1}\|_6^4)) \|\beta\|_2^2 + \frac{h}{2} \sigma \| {}^t J_{t^{n+1}}^{-1} \nabla \beta \|_2^2. \end{aligned} \quad (20)$$

Thanks to the assumptions on  $u$  and  $\Psi$ ,  $(v^n)_{n \in \{0, \dots, N\}}$  is bounded in  $\ell^\infty(\{0, \dots, N\}; \mathbb{L}^6(\Omega \setminus \bar{B}))$ , then for  $h$  independent of  $n$  and small enough, the form  $a$  is coercive. Thanks to Lax-Milgram theorem we then have the existence and uniqueness of a solution  $\beta^{n+1} \in \mathbb{H}^1(\Omega \setminus \bar{B})$  for all  $n \in \{0..N\}$ .

We now let the functions  $\tilde{\beta}^N$  and  $\tilde{\beta}^N$  be defined piece-wisely by  $\tilde{\beta}^N = \beta^{n+1}$  and  $\tilde{\beta}^N(t, y) = \beta^n(y) + \frac{t - t^n}{h}(\beta^{n+1} - \beta^n)$  for all  $y \in \Omega \setminus \bar{B}$  and  $t \in ]t^n, t^{n+1}]$ . These functions fulfill:

$$\partial_t \tilde{\beta}^N + \tilde{v}^N \cdot {}^t \tilde{J}_{t,N}^{-1} \nabla \tilde{\beta}^N - \sigma \tilde{A}^N(t, y) \tilde{\beta}^N = 0,$$

where  $\tilde{v}^N$ ,  $\tilde{J}_{t,N}$  and  $\tilde{A}^N$  are defined piece-wisely by  $\tilde{v}^N(t, y) = v^{n+1}(y)$ ,  $\tilde{J}_{t,N}(y) = J_{t^{n+1}}(y)$  and  $\tilde{A}^N(t, y) = A(t^{n+1}, y)$  for all  $t \in ]t^n, t^{n+1}]$  and  $y \in \Omega \setminus \bar{B}$ .

In order to prove the existence of solutions of (16) we now need an estimate on  $\tilde{\beta}^N$ . We take  $\beta' = \beta^{n+1}$  in (19) and obtain thanks to (20):

$$(1 - Ch (\|v^{n+1}\|_6^2 + \|v^{n+1}\|_6^4)) \|\beta^{n+1}\|_2^2 + \sigma \frac{h}{2} \| {}^t J_{t^{n+1}}^{-1} \nabla \beta^{n+1} \|_2^2 \leq \int_{\Omega \setminus \bar{B}} \beta^n \beta^{n+1} dx \leq \frac{1}{2} \|\beta^n\|_2^2 + \frac{1}{2} \|\beta^{n+1}\|_2^2$$

and then

$$\left( \frac{1}{2} - Ch (\|v^{n+1}\|_6^2 + \|v^{n+1}\|_6^4) \right) \|\beta^{n+1}\|_2^2 + \sigma \frac{h}{2} \| {}^t J_{t^{n+1}}^{-1} \nabla \beta^{n+1} \|_2^2 \leq \frac{1}{2} \|\beta^n\|_2^2.$$

We take  $h$  still independent from  $n$  so that  $Ch (\|v^{n+1}\|_6^2 + \|v^{n+1}\|_6^4) \leq C'h \leq \frac{1}{4}$  and we obtain that

$$\|\beta^{n+1}\|_2^2 + \left( 1 - 2C' \frac{T}{N} \right)^{-1} \sigma h \| {}^t J_{t^{n+1}}^{-1} \nabla \beta^{n+1} \|_2^2 \leq \left( 1 - 2C' \frac{T}{N} \right)^{-1} \|\beta^n\|_2^2.$$

Since  $1/2 \leq 1 - 2C'T/N \leq 1$ ,  $(1 - 2C'T/N)^{-n} \leq \exp(4C'T/N)$  and a quick recurrence gives:

$$\|\beta^n\|_2^2 + 2 \sum_{k=1}^n \sigma h \| {}^t J_{t^k}^{-1} \nabla \beta^k \|_2^2 \leq \left( 1 - 2C' \frac{T}{N} \right)^{-n} \|\beta^0\|_2^2 \leq \exp\left(4C'T \frac{n}{N}\right) \|\beta^0\|_2^2 \leq \exp(4C'T) \|\beta^0\|_2^2.$$

This implies that  $\tilde{\beta}^N$  and  $\tilde{\beta}^N \in \mathbb{L}^\infty(0, T; \mathbb{L}^2(\Omega \setminus \bar{B})) \cap \mathbb{L}^2(0, T; \mathbb{H}^1(\Omega \setminus \bar{B}))$ . We now take the gradient of the first equation in (18)

$$\nabla \beta^{n+1} + h \nabla (v^{n+1} \cdot {}^t J_{t^{n+1}}^{-1} \nabla \beta^{n+1} - \sigma A(t^{n+1}, y) \beta^{n+1}) = \nabla \beta^n$$

and take its scalar product with  $J_{t^{n+1}}^{-1} {}^t J_{t^{n+1}}^{-1} \nabla \beta^{n+1}$ . Thanks to integration by parts we get:

$$\begin{aligned} & \| {}^t J_{t^{n+1}}^{-1} \nabla \beta^{n+1} \|_2^2 + h \sigma \| A(t^{n+1}, y) \beta^{n+1} \|_2^2 \\ &\leq \int_{\Omega \setminus \bar{B}} ({}^t J_{t^{n+1}}^{-1} \nabla \beta^n) \cdot ({}^t J_{t^{n+1}}^{-1} \nabla \beta^n) dy + h \int_{\Omega \setminus \bar{B}} (v^{n+1} \cdot {}^t J_{t^{n+1}}^{-1} \nabla \beta^{n+1}) A(t^{n+1}, y) \beta^{n+1} dy \\ &\leq \frac{1}{2} \| {}^t J_{t^{n+1}}^{-1} \nabla \beta^n \|_2^2 + \frac{1}{2} \| {}^t J_{t^{n+1}}^{-1} \nabla \beta^{n+1} \|_2^2 + h \|v^{n+1}\|_6 \| {}^t J_{t^{n+1}}^{-1} \nabla \beta^{n+1} \|_3 \| A(t^{n+1}, y) \beta^{n+1} \|_2 \\ &\leq \frac{1}{2} \| {}^t J_{t^{n+1}}^{-1} \nabla \beta^n \|_2^2 + \frac{h \sigma}{2} \| A(t^{n+1}, y) \beta^{n+1} \|_2^2 + \left( \frac{1}{2} - Ch (\|v^{n+1}\|_6^2 + \|v^{n+1}\|_6^4) \right) \| {}^t J_{t^{n+1}}^{-1} \nabla \beta^{n+1} \|_2^2. \end{aligned}$$

Since  $J_{t^{n+1}}^{-1}(y) = J_{t^n}^{-1}(y) + \int_{t^n}^{t^{n+1}} (\partial_t J_t^{-1}(y))(s) ds$ , we have

$$\begin{aligned} \|{}^t J_{t^{n+1}}^{-1} \nabla \beta^n\|_2 &\leq \|{}^t J_{t^{n+1}}^{-1} {}^t J_{t^n} \|\|{}^t J_{t^n}^{-1} \nabla \beta^n\|_2 \\ &\leq \left\| I + \int_{t^n}^{t^{n+1}} {}^t (\partial_t J_t^{-1}(y))(s) {}^t J_{t^n}(y) ds \right\| \|{}^t J_{t^n}^{-1} \nabla \beta^n\|_2 \\ &\leq (1 + h \|J_t(y)\|_{\mathbb{L}^\infty((0,T) \times \Omega)} \|\partial_t J_t^{-1}(y)\|_{\mathbb{L}^\infty((0,T) \times \Omega)}) \|{}^t J_{t^n}^{-1} \nabla \beta^n\|_2. \end{aligned}$$

Then we obtain

$$\left( \frac{1}{2} - Ch (\|v^{n+1}\|_6^2 + \|v^{n+1}\|_6^4) \right) \|{}^t J_{t^{n+1}}^{-1} \nabla \beta^{n+1}\|_2^2 + \frac{h\sigma}{2} \|A(t^{n+1}, y) \beta^{n+1}\|_2^2 \leq \frac{(1 + Ch)^2}{2} \|{}^t J_{t^n}^{-1} \nabla \beta^n\|_2^2.$$

As we did for the  $L^2$  estimates we obtain that

$$\begin{aligned} \|{}^t J_{t^n}^{-1} \nabla \beta^n\|_2^2 + 2 \sum_{k=1}^n h\sigma \|A(t^k, y) \beta^k\|_2^2 &\leq \left(1 - 2C' \frac{T}{N}\right)^{-n} \left(1 + C \frac{T}{N}\right)^{2n} \|J_0^{-1} \nabla \beta^0\|_2^2 \\ &\leq \exp\left((4C' + 2C)T \frac{n}{N}\right) \|J_0^{-1} \nabla \beta^0\|_2^2 \\ &\leq \exp((4C' + 2C)T) \|J_0^{-1} \nabla \beta^0\|_2^2. \end{aligned}$$

Then  $\tilde{\beta}^N$  and  $\bar{\beta}^N$  belong in

$$\mathbb{L}^\infty(0, T; \mathbb{H}^1(\Omega \setminus \bar{B})) \cap \mathbb{L}^2(0, T; \mathbb{H}^2(\Omega \setminus \bar{B})) \text{ and } \partial_t \bar{\beta}^N \in \mathbb{L}^2(0, T; \mathbb{L}^2(\Omega \setminus \bar{B})).$$

Thanks to these last bounds we get that

$$\|\tilde{\beta}^N - \bar{\beta}^N\|_{\mathbb{L}^2((0,T) \times \Omega \setminus \bar{B})} \leq \frac{T}{N} \|\partial_t \bar{\beta}^N\|_{\mathbb{L}^2((0,T) \times \Omega \setminus \bar{B})} \leq \frac{C}{N} \rightarrow 0 \text{ as } N \rightarrow +\infty.$$

From these results we deduce by means of Theorem A.5 that there exists

$$\beta \in \mathbb{L}^\infty(0, T; \mathbb{H}^1(\Omega \setminus \bar{B})) \cap \mathbb{L}^2(0, T; \mathbb{H}^2(\Omega \setminus \bar{B})) \cap \mathbb{H}^1(0, T; \mathbb{L}^2(\Omega \setminus \bar{B}))$$

such that up to a subsequence

$$\begin{aligned} \tilde{\beta}^N &\rightharpoonup \beta && \text{weak} - \star \text{ in } \mathbb{L}^\infty(0, T; \mathbb{H}^1(\Omega \setminus \bar{B})), \\ \tilde{\beta}^N &\rightharpoonup \beta && \text{weak in } \mathbb{L}^2(0, T; \mathbb{H}^2(\Omega \setminus \bar{B})), \\ \tilde{\beta}^N &\rightharpoonup \beta && \text{weak} - \star \text{ in } \mathbb{L}^\infty(0, T; \mathbb{H}^1(\Omega \setminus \bar{B})), \\ \tilde{\beta}^N &\rightharpoonup \beta && \text{weak in } \mathbb{L}^2(0, T; \mathbb{H}^2(\Omega \setminus \bar{B})), \\ \partial_t \tilde{\beta}^N &\rightharpoonup \partial_t \beta && \text{weak in } \mathbb{L}^2(0, T; \mathbb{L}^2(\Omega \setminus \bar{B})), \\ \tilde{\beta}^N &\rightarrow \beta && \text{strong in } \mathcal{C}^0(0, T; \mathbb{H}^s(\Omega \setminus \bar{B})) \cap \mathbb{L}^2(0, T; \mathbb{H}^{1+s}(\Omega \setminus \bar{B})), \ 0 \leq s < 1, \\ \tilde{\beta}^N &\rightarrow \beta && \text{strong in } \mathbb{L}^2(0, T; \mathbb{L}^2(\Omega \setminus \bar{B})). \end{aligned}$$

Moreover we have that

$$\begin{aligned} \tilde{v}^N &\rightharpoonup v && \text{weak} - \star \text{ in } L^\infty(0, T; \mathbb{H}^1(\Omega \setminus \bar{B})), \\ \tilde{J}_{t,N} &\rightarrow J_t && \text{strong in } \mathcal{C}^1((0, T) \times \Omega \setminus \bar{B}), \\ \tilde{A}^N(t, y) \beta &\rightarrow A(t, y) \beta && \text{strong in } \mathbb{L}^2(0, T; \mathbb{H}^2(\Omega \setminus \bar{B})) \\ &&& \text{for all } \beta \in \mathbb{L}^2(0, T; \mathbb{H}^2(\Omega \setminus \bar{B})). \end{aligned}$$

Thanks to all these convergences we deduce that  $\beta$  is a solution to (16) with all the expected boundary and initial conditions. Since we assume that  $\beta_0 \in \mathbb{H}^2(\Omega \setminus \bar{B})$  we have indeed more regularity on  $\beta$ . To prove this we write all the energy estimates we have on  $\beta$ , available in Appendix B, which finishes the proof. ■

**Remark :** Since we use Lemma A.2 the first inequality in Theorem 2.7 is not sharp. The second one is a very rough bound.

### 3 Asymptotic analysis and proofs of Theorem 1.1 and Theorem 1.2

#### 3.1 Study of the coupled penalized problem

To prove the existence of a solution to this coupled non-linear problem, we introduce the sequence  $(\alpha^n, u^n, p^n)$  defined by

1.  $\alpha^0 = \tilde{\alpha}_0$  the extension by 0 of  $\alpha_0$  outside  $\Omega \setminus \bar{B}(0)$ ,
2.  $(u^n, p^n)$  is the solution to

$$\begin{cases} -\operatorname{div} \left[ 2 \left( \mu_\infty + (\mu_0(\alpha^n) - \mu_\infty) (1 + 2\beta^2(\alpha^n) |D(u^n)|^2)^{q(\alpha^n)/2-1} \right) D(u^n) \right] \\ \quad + \frac{\mathbf{1}_B(t)}{\varepsilon} (u^n - \bar{u}) = f - \nabla p^n \text{ in } [0, T] \times \Omega, \\ u^n \text{ satisfies the set of boundary conditions (7).} \end{cases}$$

3.  $\alpha^{n+1}$  is the solution to

$$\partial_t \alpha^{n+1} + u^n \cdot \nabla \alpha^{n+1} - \operatorname{div} \sigma \nabla \alpha^{n+1} = 0 \quad \text{in } O_p^c$$

where  $\alpha^{n+1}$  satisfies the set of initial and boundary conditions (8).

4. We let  $u^{n+1} = G(u^n)$ .

In the following we prove that  $G$  is a contraction in a well-chosen space. One can notice that the extension of  $\alpha^n$  by 0 means  $\alpha^{n+1} = 0$  in  $O_p$ .

### 3.1.1 Study of $G$

Let  $E = \mathbb{L}^\infty(0, T; V(\Omega))$ . The operator  $G$  maps  $E$  to  $E$  thanks to theorems 2.6 and 2.7. Let  $u$  and  $u'$  two solutions to (15) with  $\alpha$  and  $\alpha'$  respectively. We need the following proposition, whose proofs are available in Appendix C.

**Proposition 3.1** *Under the assumption (H4), there exists a constant  $C$  depending only on  $T$ ,  $\Omega$ ,  $f$  and  $\bar{u}$  such that for a.e.  $t \in [0, T]$*

$$\|(u - u')(t, \cdot)\|_{\mathbb{H}^1(\Omega)} \leq C \|(\alpha - \alpha')(t, \cdot)\|_{\mathbb{L}^\infty(\Omega)}.$$

**Proof.** See Appendix C.1. ■

Let  $\alpha$  and  $\alpha'$  two solutions to (7)-(8)-(9) respectively with  $u$  and  $u'$ .

**Proposition 3.2** *There exists a constant  $C$  depending on  $\Omega$ ,  $\|\alpha_0\|_{\mathbb{H}^2(\Omega)}$ ,  $f$ ,  $\bar{u}$ , and on  $\|\mu\|_{\mathbb{L}^\infty(\Omega)}$  such that for all  $t \in [0, T]$*

$$\|(\alpha - \alpha')(t, \cdot)\|_{\mathbb{H}^1(\Omega \setminus \bar{B}(t))}^2 \leq C \|u - u'\|_{\mathbb{L}^2(0, t; \mathbb{H}^1(\Omega \setminus \bar{B}(\cdot)))}^2$$

and

$$\|\alpha - \alpha'\|_{\mathbb{L}^2(0, t; \mathbb{H}^2(\Omega \setminus \bar{B}(\cdot)))}^2 \leq C \|u - u'\|_{\mathbb{L}^2(0, t; \mathbb{H}^1(\Omega \setminus \bar{B}(\cdot)))}^2.$$

**Proof.** See Appendix C.2. ■

**Proposition 3.3** *There exists a time  $T^* < T$  depending only on  $T$ ,  $\Omega$ ,  $O_p$ ,  $\|\alpha_0\|_{\mathbb{H}^2(\Omega)}$ ,  $f$  and  $\bar{u}$  such that*

$$\|G(u) - G(u')\|_{\mathbb{L}^2(0, T^*; \mathbb{H}^1(\Omega))} \leq \frac{1}{2} \|u - u'\|_{\mathbb{L}^2(0, T^*; \mathbb{H}^1(\Omega))}.$$

**Proof.** See Appendix C.3. ■

**Proposition 3.4** *There exists a constant  $C$  depending on  $T$ ,  $\Omega$ ,  $O_p$ ,  $f$  and  $\bar{u}$  such that*

$$\begin{aligned} & \|(\mu(\alpha, D(u))D(u) - \mu(\alpha', D(u'))D(u'))(t, \cdot)\|_{\mathbb{L}^2(\Omega)} \\ & \leq C \left( \|(D(u) - D(u'))(t, \cdot)\|_{\mathbb{L}^2(\Omega)} + \|(\alpha - \alpha')(t, \cdot)\|_{\mathbb{L}^\infty(\Omega)} \right). \end{aligned}$$

**Proof.** See Appendix C.4. ■

### 3.1.2 Proof of Theorem 1.1

The sequence  $(\alpha^n)_{n \in \mathbb{N}}$  defined in section 3.1 is bounded in  $\mathbb{L}^\infty(0, T; \mathbb{H}^2(\Omega \setminus \bar{B}(\cdot))) \cap \mathbb{L}^2(0, T; \mathbb{H}^3(\Omega \setminus \bar{B}(\cdot))) \cap \mathbb{H}^1(0, T; \mathbb{H}^1(\Omega \setminus \bar{B}(\cdot)))$ , as well as  $(u^n)_{n \in \mathbb{N}}$  in  $\mathbb{L}^\infty(0, T; V(\Omega))$  and  $(p^n)_{n \in \mathbb{N}}$  in  $\mathbb{L}^2(0, T; \mathbb{L}_0^2(\Omega))$ .

The function  $G$  is a contraction on  $\mathbb{L}^2(0, T^*; \mathbb{H}^1(\Omega))$ . This implies that the recurrent sequence  $(u^n)_{n \in \mathbb{N}}$  defined in the section 3.1 converges strongly in  $\mathbb{L}^2(0, T^*; \mathbb{H}^1(\Omega))$ , and thanks to Prop. 3.2 the sequence  $(\alpha^n)_{n \in \mathbb{N}}$  converges strongly in  $\mathbb{L}^\infty(0, T^*; \mathbb{H}^1(\Omega \setminus \bar{B}(\cdot))) \cap \mathbb{L}^2(0, T^*; \mathbb{H}^2(\Omega \setminus \bar{B}(\cdot)))$  and then in  $\mathbb{L}^2(0, T^*; \mathbb{L}^\infty(\Omega \setminus \bar{B}(\cdot)))$ .

Thanks to Prop. 3.4 we then have that  $(\mu(\alpha^n, u^n)D(u^n))_{n \in \mathbb{N}}$  converges strongly to  $\mu(\alpha, u)D(u)$  in  $\mathbb{L}^2(0, T^*; \mathbb{L}^2(\Omega))$ .

Moreover, thanks to the boundedness of the sequences there exists subsequences of  $(\alpha^n)_{n \in \mathbb{N}}$  and  $(p^n)_{n \in \mathbb{N}}$  still denoted  $(\alpha^n)_{n \in \mathbb{N}}$  and  $(p^n)_{n \in \mathbb{N}}$  that fulfill:

$$\begin{aligned} \alpha^n & \rightharpoonup \alpha & \text{weak} - \star & \text{in } \mathbb{L}^\infty(0, T^*; \mathbb{H}^2(\Omega \setminus \bar{B}(\cdot))), \\ \alpha^n & \rightharpoonup \alpha & \text{weak} & \text{in } \mathbb{L}^2(0, T^*; \mathbb{H}^3(\Omega \setminus \bar{B}(\cdot))), \\ \alpha^n & \rightharpoonup \alpha & \text{weak} & \text{in } \mathbb{H}^1(0, T^*; \mathbb{H}^1(\Omega \setminus \bar{B}(\cdot))), \\ p^n & \rightharpoonup p & \text{weak} & \text{in } \mathbb{L}^2(0, T^*; \mathbb{L}_0^2(\Omega)). \end{aligned}$$

We now take the limit as  $n$  goes to  $+\infty$  in the sequence defined in 3.1 and obtain that  $(u, p, \alpha)$  is a weak solution to (9) on  $(0, T^*) \times \Omega$ .

Furthermore, the time  $T^*$  depends only on the data of the problem, particularly through the estimate on  $\alpha \in \mathbb{L}^\infty(0, T; \mathbb{H}^2(\Omega \setminus \bar{B}(\cdot)))$  obtained in Theorem 2.7. We then have

$$\|\alpha\|_{\mathbb{L}^\infty(0, T; \mathbb{H}^2(\Omega \setminus \bar{B}(\cdot)))} \leq C \|\alpha_0\|_{\mathbb{H}^2(\Omega \setminus \bar{B}(0))} \exp \left( C' T \left( 1 + \|u\|_{\mathbb{L}^\infty(0, T; \mathbb{H}^1(\Omega))}^2 + \|u\|_{\mathbb{L}^\infty(0, T; \mathbb{H}^1(\Omega))}^4 \right) \right) \stackrel{\text{def}}{=} M, \quad (21)$$

with estimates on  $u$  only depending on the data of the problem (Theorem 2.6). We let  $M$  be the right-handside of the inequality. Back to Prop. 3.3 we bound  $\|\alpha_0\|_{\mathbb{H}^2(\Omega \setminus \bar{B}(0))}$  by  $M$  and take a smaller  $T^*$  so that  $G$  be a contraction. Since  $\alpha \in \mathbb{L}^2(0, T; \mathbb{H}^3(\Omega \setminus \bar{B}(\cdot)))$  and  $\frac{\partial \alpha}{\partial t} \in \mathbb{L}^2(0, T; \mathbb{H}^1(\Omega \setminus \bar{B}(\cdot)))$  we then have:

$$\alpha \in \mathcal{C}([0, T^*]; \mathbb{H}^2(\Omega \setminus \bar{B}(\cdot)))$$

from Theorem A.5 applied to  $\beta(t, y) = \alpha(t, \Psi_t(y))$ .

This implies that  $\alpha(0, \cdot) = \alpha_0 \in \mathbb{H}^2(\Omega \setminus \bar{B}(0))$  and that  $\alpha(T^*, \cdot) \in \mathbb{H}^2(\Omega \setminus \bar{B}(T^*))$  and fulfills the same boundary conditions as  $\alpha_0$ . Moreover  $\|\alpha(T^*, \cdot)\|_{\mathbb{H}^2(\Omega \setminus \bar{B}(T^*))}$  is also bounded by  $M$  thanks to (21). We now apply the same estimates starting from  $T^*$  and still get that  $G$  is a contraction. We obtain the existence and the uniqueness of the solution on  $(T^*, 2T^*)$  and thanks to (21) on  $(0, 2T^*) \subset (0, T)$  we bound  $\|\alpha(t, \cdot)\|_{\mathbb{H}^2(\Omega \setminus \bar{B}(t))}$  by  $M$ . This allows us to recursively obtain the solution on  $(0, T)$ .

### 3.2 Proof of Theorem 1.2

**Lemma 3.5** *Let  $u \in \mathbb{L}^p(0, T; \mathbb{H}^1(\Omega \setminus \bar{B}(\cdot)))$ ,  $K \in \mathbb{R}^{+*}$  and  $(\alpha, \alpha') \in \mathbb{L}^q(0, T; \mathbb{L}^\infty(\Omega \setminus \bar{B}(\cdot)))$  such that  $\|\alpha\|_{\mathbb{L}^q(0, T; \mathbb{L}^\infty(\Omega \setminus \bar{B}(\cdot)))}$  and  $\|\alpha'\|_{\mathbb{L}^q(0, T; \mathbb{L}^\infty(\Omega \setminus \bar{B}(\cdot)))}$  are bounded by  $K$ . Then there exists a constant  $C_K > 0$  such that*

$$\|(2\mu(\alpha, u) - 2\mu(\alpha', u)) D(u)\|_{\mathbb{L}^r(0, T; \mathbb{L}^2(\Omega \setminus \bar{B}(t)))} \leq C_K \|D(u)\|_{\mathbb{L}^p(0, T; \mathbb{L}^2(\Omega \setminus \bar{B}(\cdot)))} \|\alpha - \alpha'\|_{\mathbb{L}^q(0, T; \mathbb{L}^\infty(\Omega \setminus \bar{B}(\cdot)))},$$

where  $\frac{1}{r} = \frac{1}{p} + \frac{1}{q}$ . The same result holds if we replace  $\Omega \setminus \bar{B}(t)$  by  $\Omega$ .

**Proof.** The proof is similar to the proof of Proposition 3.4, detailed in section C.4. ■

According to Theorem 1.1 we have that

- $\alpha^\varepsilon$  is bounded independently from  $\varepsilon$  in the spaces  $\mathbb{L}^\infty(0, T; \mathbb{H}^2(\Omega \setminus \bar{B}(\cdot)))$ ,  $\mathbb{L}^2(0, T; \mathbb{H}^3(\Omega \setminus \bar{B}(\cdot)))$  and  $\mathbb{H}^1(0, T; \mathbb{H}^1(\Omega \setminus \bar{B}(\cdot)))$ , which also implies that  $\alpha^\varepsilon$  and  $\nabla \alpha^\varepsilon$  are bounded in  $\mathbb{H}^1(O_p^c)$ ,
- $u^\varepsilon$  is bounded in  $\mathbb{L}^q(0, T; V(\Omega))$  for all  $2 \leq q \leq +\infty$ ,
- $\varepsilon^{-1} \|u^\varepsilon - \bar{u}\|_{\mathbb{L}^q(0, T; B(\cdot))}^2$  is bounded for all  $2 \leq q \leq +\infty$ .

Then there exists a subsequence still denoted  $(u^\varepsilon, p^\varepsilon, \alpha^\varepsilon)$  that fulfills

$$\begin{aligned} \alpha^\varepsilon &\rightharpoonup \alpha && \text{weak} - \star \text{ in } \mathbb{L}^\infty(0, T; \mathbb{H}^2(\Omega \setminus \bar{B}(\cdot))), \\ \alpha^\varepsilon &\rightharpoonup \alpha && \text{weak in } \mathbb{L}^2(0, T; \mathbb{H}^3(\Omega \setminus \bar{B}(\cdot))), \\ \alpha^\varepsilon &\rightharpoonup \alpha && \text{weak in } \mathbb{H}^1(0, T; \mathbb{H}^1(\Omega \setminus \bar{B}(\cdot))), \\ \alpha^\varepsilon &\rightarrow \alpha && \text{strong in } \mathbb{L}^q(O_p^c) \text{ for all } 2 \leq q \leq 4, \\ \nabla \alpha^\varepsilon &\rightarrow \nabla \alpha && \text{strong in } \mathbb{L}^q(O_p^c) \text{ for all } 2 \leq q \leq 4, \\ u^\varepsilon &\rightharpoonup u && \text{weak in } \mathbb{L}^q(0, T; V(\Omega)) \text{ for all } 2 \leq q < +\infty, \\ u^\varepsilon &\rightharpoonup u && \text{weak} - \star \text{ in } \mathbb{L}^\infty(0, T; V(\Omega)), \\ u^\varepsilon &\rightarrow \bar{u} && \text{strong in } \mathbb{L}^q(0, T; \mathbb{L}^2(B(\cdot))) \text{ for all } 2 \leq q \leq +\infty, \end{aligned}$$

**Study of  $\alpha$ :** Thanks to the strong convergence of  $\nabla \alpha^\varepsilon$  in  $\mathbb{L}^4(O_p^c)$  and the weak convergence of  $u^\varepsilon$  in  $\mathbb{L}^4(O_p^c)$ ,  $u^\varepsilon \cdot \nabla \alpha^\varepsilon$  converges weakly toward  $u \cdot \nabla \alpha$  in  $\mathbb{L}^2(O_p^c)$ . This implies that we can take the limit in the weak formulation of the convection-diffusion equation.

Since  $\alpha^\varepsilon$  converges weakly towards  $\alpha$  in  $\mathbb{H}^1(0, T; \mathbb{H}^1(\Omega \setminus \bar{B}(\cdot)))$ ,  $\alpha^\varepsilon(0, \cdot)$  converges weakly towards  $\alpha(0, \cdot)$  in  $\mathbb{H}^1(\Omega \setminus \bar{B}(0))$  which implies that  $\alpha(0, \cdot) = \alpha_0 \in \mathbb{H}^2(\Omega \setminus \bar{B}(0))$  in the trace sense.

Moreover, thanks to Theorem A.5 (Aubin-Simon applied to  $\beta^\varepsilon(t, y) = \alpha^\varepsilon(t, \Psi_t(y))$ ),  $\alpha^\varepsilon$  converges strongly up to a subsequence in  $\mathbb{L}^2(0, T; \mathbb{H}^2(\Omega \setminus \bar{B}(\cdot)))$  and consequently in  $\mathbb{L}^2(0, T; \mathbb{L}^\infty(\Omega \setminus \bar{B}(\cdot)))$ .

**Study of  $(u, p)$ :** Thanks to the weak convergence of  $u^\varepsilon$  towards  $u$  in  $\mathbb{L}^2(0, T; V(\Omega))$  and to the strong convergence of  $u^\varepsilon$  towards  $\bar{u}$  in  $\mathbb{L}^2(O_p)$ , we have  $u = \bar{u}$  in  $O_p$ .

Since  $2\mu(\alpha^\varepsilon, u^\varepsilon)D(u^\varepsilon)$  is bounded in  $\mathbb{L}^2(O_p^c)$  and in  $\mathbb{L}^2(O)$  it converges weakly in  $\mathbb{L}^2(O_p^c)$  and in  $\mathbb{L}^2(O)$ .

This implies that  $-\operatorname{div}(2\mu(\alpha^\varepsilon, u^\varepsilon)D(u^\varepsilon))$  converges weakly in  $\mathbb{L}^2(0, T; \mathbb{H}^{-1}(\Omega \setminus \bar{B}(\cdot)))$  and in  $\mathbb{L}^2(0, T; \mathbb{H}^{-1}(\Omega))$ . In  $O_p^c$ ,  $(u^\varepsilon, p^\varepsilon)$  is a weak solution to  $\operatorname{div} u^\varepsilon = 0$  in  $O_p^c$  and

$$-\operatorname{div}(2\mu(\alpha^\varepsilon, u^\varepsilon)D(u^\varepsilon)) = f - \nabla p^\varepsilon \text{ in } O_p^c,$$

where  $u^\varepsilon$  satisfies the boundary conditions (7).

This also implies that  $\nabla p^\varepsilon$  converges weakly towards  $\nabla p$  in  $\mathbb{L}^2(0, T; \mathbb{H}^{-1}(\Omega \setminus \bar{B}(\cdot)))$  and then  $p^\varepsilon$  converges weakly towards  $p$  in  $\mathbb{L}^2(0, T; \mathbb{L}_0^2(\Omega \setminus \bar{B}(\cdot)))$ .

Since  $u \in L^2(0, T; V(\Omega)) \subset \mathbb{L}^2(0, T; \mathbb{H}^1(\Omega))$  then  $u|_{\partial B(\cdot) \cap \Omega} \in \mathbb{L}^2(0, T; \mathbb{H}^{1/2}(\partial B(\cdot) \cap \Omega))$ . Moreover  $u = \bar{u}$  in  $O_p$  with  $\bar{u} \in \mathbb{H}^3(O_p)$ . Consequently,  $u|_{\partial B(\cdot) \cap \Omega} = \bar{u}|_{\partial B(\cdot) \cap \Omega}$  in  $\mathbb{L}^2(0, T; \mathbb{H}^{1/2}(\partial B(\cdot) \cap \Omega))$ .

Let  $U$  the weak limit of  $-\operatorname{div}(2\mu(\alpha^\varepsilon, u^\varepsilon)D(u^\varepsilon))$  in  $\mathbb{L}^2(0, T; \mathbb{H}^{-1}(\Omega))$ . We now prove that  $U = -\operatorname{div}(2\mu(\alpha, u)D(u))$ . Thanks to Lemma 3.5 and to the bounds on  $u^\varepsilon$  we have that  $\| (2\mu(\alpha^\varepsilon, u^\varepsilon) - 2\mu(\alpha, u^\varepsilon)) D(u^\varepsilon) \|_{\mathbb{L}^q(0, T; \mathbb{L}^2(\Omega \setminus \bar{B}(\cdot)))}$  converges to zero as  $\varepsilon$  goes to zero for all  $1 \leq q \leq 4$ .

We will now study more accurately the operator  $A_\alpha(u) = -\operatorname{div}(2\mu(\alpha, u)D(u))$ . We prove in Theorem 2.1 that the operator  $A_\alpha : V(\Omega) \rightarrow V'(\Omega)$  is bounded, hemi-continuous and strongly monotone. The operator is then pseudo-monotone (Proposition A.11). Moreover we have

$$\langle A_{\alpha^\varepsilon} u^\varepsilon, u^\varepsilon \rangle + \frac{1}{\varepsilon} \|u^\varepsilon - \bar{u}\|_{\mathbb{L}^2(B(t))}^2 = \int_{\Omega} f(u^\varepsilon - P(\bar{u})) + \langle A_{\alpha^\varepsilon} u^\varepsilon, P(\bar{u}) \rangle.$$

Then

$$\begin{aligned} \overline{\lim}_{\varepsilon \rightarrow 0} \langle A_{\alpha^\varepsilon} u^\varepsilon, u^\varepsilon \rangle &= \overline{\lim}_{\varepsilon \rightarrow 0} \langle A_{\alpha^\varepsilon} u^\varepsilon, u^\varepsilon \rangle \\ &\leq \overline{\lim}_{\varepsilon \rightarrow 0} \int_{\Omega} (f \cdot (u^\varepsilon - P(\bar{u})) + \langle A_{\alpha^\varepsilon} u^\varepsilon, P(\bar{u}) \rangle) \\ &\leq \int_{\Omega} f \cdot (u - P(\bar{u})) dx + \langle U, P(\bar{u}) \rangle \\ &\leq \int_{\Omega \setminus \bar{B}(t)} f \cdot (u - P(\bar{u})) dx + \underbrace{\int_{B(t)} f \cdot (u - P(\bar{u})) dx}_{=0} + \langle U, P(\bar{u}) \rangle. \end{aligned}$$

Since  $f = \nabla p + U$  in  $\Omega \setminus \bar{B}(t)$  we have

$$\begin{aligned} \int_{\Omega \setminus \bar{B}(t)} f \cdot (u - P(\bar{u})) dx &= \int_{\Omega \setminus \bar{B}(t)} (\nabla p + U) \cdot (u - P(\bar{u})) dx \\ &= \int_{\Omega \setminus \bar{B}(t)} \nabla p \cdot (u - P(\bar{u})) dx + \int_{\Omega \setminus \bar{B}(t)} U \cdot (u - P(\bar{u})) dx \\ &= \int_{\partial B(t) \cap \Omega} \underbrace{p(u - P(\bar{u})) \cdot \nu}_{=0} d\sigma + \int_{\Gamma_L} \underbrace{p(u - P(\bar{u})) \cdot \nu}_{=0} d\sigma \\ &\quad - \int_{\Omega \setminus \bar{B}(t)} \underbrace{p \operatorname{div}(u - P(\bar{u}))}_{=0} dx + \int_{\Omega} U \cdot (u - P(\bar{u})) dx \\ &= \langle U, u - P(\bar{u}) \rangle. \end{aligned}$$

Finally we have

$$\overline{\lim}_{\varepsilon \rightarrow 0} \langle A_{\alpha^\varepsilon} u^\varepsilon, u^\varepsilon \rangle \leq \langle U, u \rangle.$$

Since  $u^\varepsilon \rightharpoonup u$  in  $\mathbb{L}^2(0, T; V(\Omega))$  and  $A_{\alpha^\varepsilon} u^\varepsilon \rightharpoonup U$  in  $\mathbb{L}^2(0, T; V'(\Omega))$  and  $A_\alpha$  is pseudo-monotone, we have thanks to Proposition A.11 that  $A_\alpha u = U$ .

Thanks to the weak convergence of  $v^\varepsilon = 2\mu(\alpha^\varepsilon, u^\varepsilon)D(u^\varepsilon) - p^\varepsilon I$  in  $\mathbb{L}^2(O_p^c)$  and since  $\operatorname{div} v^\varepsilon = f \in \mathbb{L}^2(O_p^c)$ , we get  $v^\varepsilon$  converging weakly in  $H_{\operatorname{div}} = \{v \in \mathbb{L}^2(\Omega), \operatorname{div} v \in \mathbb{L}^2(\Omega)\}$ . Then  $2\mu(\alpha, u)D(u) - pI \in H_{\operatorname{div}}$  and  $(2\mu(\alpha, u)D(u) - pI) \cdot \nu = 0$  on  $[0, T] \times \Gamma$ , from which we deduce as in the proof of Theorem 2.1 the remaining boundary conditions.

**Uniqueness:** Let  $(u, p, \alpha)$  and  $(u', p', \alpha')$  two weak solutions to (5). Prop 3.2 gives that for all  $t \in [0, T]$ ,

$$\begin{aligned} \|(\alpha - \alpha')(t, \cdot)\|_{\mathbb{H}^1(\Omega \setminus \bar{B}(\cdot))} &\leq C \|u - u'\|_{\mathbb{L}^2(0, t; \mathbb{H}^1(\Omega) \setminus \bar{B}(\cdot))} \\ \|\alpha - \alpha'\|_{\mathbb{L}^2(0, t; \mathbb{H}^2(\Omega \setminus \bar{B}(\cdot)))} &\leq C \|u - u'\|_{\mathbb{L}^2(0, t; \mathbb{H}^1(\Omega \setminus \bar{B}(\cdot)))}. \end{aligned}$$

Following the estimates in Proposition 3.1 we write for almost all  $t \in [0, T]$ ,

$$\begin{aligned} &\int_{\Omega \setminus \bar{B}(t)} 2\mu |D(u - u')|^2(t, x) dx \\ &\leq K \left( \|D(u)\|_{\mathbb{L}^\infty(0, T; \mathbb{L}^2(\Omega \setminus \bar{B}(\cdot)))}^2 + \|D(u')\|_{\mathbb{L}^\infty(0, T; \mathbb{L}^2(\Omega \setminus \bar{B}(\cdot)))}^2 \right) \|(\alpha - \alpha')(t, \cdot)\|_{\mathbb{L}^\infty(\Omega \setminus \bar{B}(t))}^2 \end{aligned}$$

For a.e.  $t \in [0, T]$  we have

$$\begin{aligned} &\|D(u - u')(t, \cdot)\|_{\mathbb{L}^2(\Omega \setminus \bar{B}(\cdot))} \\ &\leq C (\|u\|_{\mathbb{L}^\infty(0, T; \mathbb{H}^1(\Omega \setminus \bar{B}(\cdot)))} + \|u'\|_{\mathbb{L}^\infty(0, T; \mathbb{H}^1(\Omega \setminus \bar{B}(\cdot)))}) \|(\alpha - \alpha')(t, \cdot)\|_{\mathbb{L}^\infty(\Omega \setminus \bar{B}(\cdot))}. \end{aligned}$$

Thanks to the bounds on  $u, u'$  and to lemma A.2 we obtain for a.e.  $t \in [0, T]$ ,

$$\|D(u - u')(t, \cdot)\|_{\mathbb{L}^2(\Omega \setminus \bar{B}(\cdot))} \leq C \|(\alpha - \alpha')(t, \cdot)\|_{\mathbb{H}^1(\Omega \setminus \bar{B}(\cdot))}^{1/4} \|(\alpha - \alpha')(t, \cdot)\|_{\mathbb{H}^2(\Omega \setminus \bar{B}(\cdot))}^{3/4}.$$

Combining all these inequalities leads to

$$\begin{aligned}
\|u - u'\|_{\mathbb{L}^2(0,t;\mathbb{H}^1(\Omega \setminus \bar{B}(\cdot)))}^2 &\leq C \int_0^t \|(\alpha - \alpha')(s, \cdot)\|_{\mathbb{H}^1(\Omega \setminus \bar{B}(\cdot))}^{1/2} \|(\alpha - \alpha')(s, \cdot)\|_{\mathbb{H}^2(\Omega \setminus \bar{B}(\cdot))}^{3/2} ds \\
&\leq C \left( \int_0^t \|(\alpha - \alpha')(s, \cdot)\|_{\mathbb{H}^1(\Omega \setminus \bar{B}(\cdot))}^2 ds \right)^{1/4} \|\alpha - \alpha'\|_{\mathbb{L}^2(0,t;\mathbb{H}^2(\Omega \setminus \bar{B}(\cdot)))}^{3/2} \\
&\leq C \left( \int_0^t \|(\alpha - \alpha')(s, \cdot)\|_{\mathbb{H}^1(\Omega \setminus \bar{B}(\cdot))}^2 ds \right)^{1/4} \|u - u'\|_{\mathbb{L}^2(0,t;\mathbb{H}^1(\Omega \setminus \bar{B}(\cdot)))}^{3/2}.
\end{aligned}$$

Hence

$$\|u - u'\|_{\mathbb{L}^2(0,t;\mathbb{H}^1(\Omega \setminus \bar{B}(\cdot)))}^2 \leq C \int_0^t \|(\alpha - \alpha')(s, \cdot)\|_{\mathbb{H}^1(\Omega \setminus \bar{B}(\cdot))}^2 ds$$

and finally

$$\|(\alpha - \alpha')(t, \cdot)\|_{\mathbb{H}^1(\Omega \setminus \bar{B}(\cdot))}^2 \leq C \|u - u'\|_{\mathbb{L}^2(0,t;\mathbb{H}^1(\Omega \setminus \bar{B}(\cdot)))}^2 \leq C \int_0^t \|(\alpha - \alpha')(s, \cdot)\|_{\mathbb{H}^1(\Omega \setminus \bar{B}(\cdot))}^2 ds.$$

Thanks to Gronwall lemma we have for all  $t \in [0, T]$

$$\|(\alpha - \alpha')(t, \cdot)\|_{\mathbb{H}^1(\Omega \setminus \bar{B}(\cdot))} = 0,$$

and then conclude that  $u = u'$  and  $p = p'$ .

## 4 Applications to shear-thinning heterogeneous micro-scale flows

Two microfluidic real-world problems satisfying the coupled problem (2,3) are addressed in these sections.

Firstly, in section 4.1, the transport and diffusion of Xanthan polymer in a porous rock is studied at the scale of the pores. In this case the domain does not depend on time, but a strongly non-linear miscible fluid is in motion in a micro-channel exhibiting a complex geometry.

Secondly, in section 4.2, a mixture of mucins, the proteins involved in pulmonary mucus, are displaced by means of the vibratile motion of the ciliated epithelium cells covering the lungs. In that last case, the domain is moving and is the dominant motion effect. The full Stokes-transport coupling thus goes beyond the work done in [10] where only a prescribed  $\alpha(x)$  was considered.

Dedicated computational algorithms have been developed to compute the studied coupled Newtonian problem [11, 12, 10], and for the uncoupled non-linear problem [9]. These algorithms involve a hybrid grid-particles framework in order to consider a suitable discretization of each phenomenon: Cartesian grids for the Stokes problem and diffusion, Lagrangian method for the transport.

The resolution of the Stokes problem is based on an iterative projection method. This ensures accurate computations of both the inviscid velocity and the non-linear effects as well as the penalized domain velocity and boundary conditions (an inherent problem of projection methods [28]). It has been shown in [11], and improved numerically in [12], that for a given function  $\alpha$  the solution to the generalized Stokes problem is the limit of:

$$u = \mathbb{P} \left( \lim_{n \rightarrow \infty} u_n^* \right)$$

where  $\mathbb{P}$  is the projector on divergence-free fields  $\mathbb{P}(v) = v - \nabla \zeta$  with  $\zeta$  the solution to  $-\Delta \zeta = -\operatorname{div} v$  satisfying homogeneous Neumann or periodic boundary conditions, and where  $u_n^*$  is the sequence of functions defined as follows:

$$-\mu \Delta u_{n+1}^* + \frac{\mathbf{1}_{B(t)}}{\varepsilon} (u_{n+1}^* - u_n^* + \mathbb{P}(u_n^*)) = f + [2D(u_n) + (\operatorname{div} u_n^*) \operatorname{Id}] \nabla \mu \quad (22)$$

with  $\mu = \mu(\alpha, \mathbb{P}(u_n^*))$  satisfying the Carreau law (2).

Adequate boundary conditions are setup for the limit function to satisfy the correct boundary conditions of the Stokes problem. Indeed, the non homogeneous Dirichlet condition based on the Richardson extrapolation

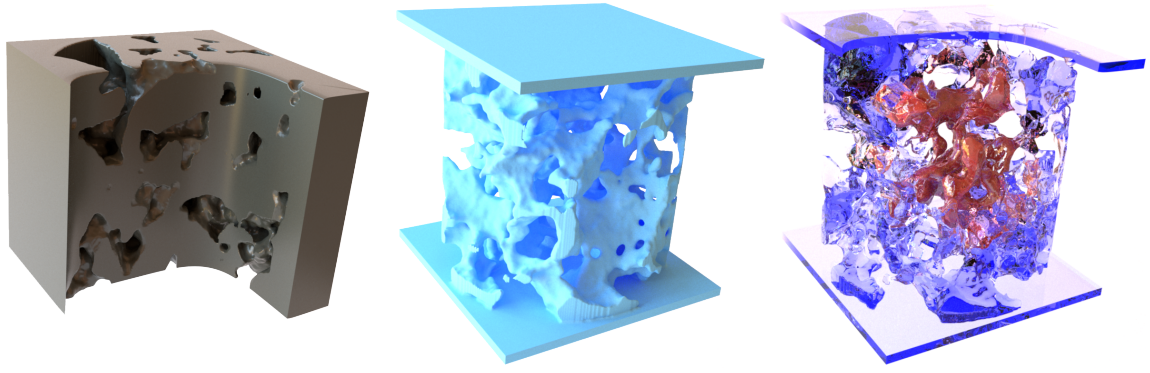
$$u_{n+1}^* = g + (1 - \theta) (\mathbb{P}(u_n^*) - u_n^*) + \theta (\mathbb{P}(u_{n-1}^*) - u_{n-1}^*)$$

leads to the boundary condition  $u = g$ .  $\theta \in [0, 1]$  leads to the usual relaxation scheme, while  $\theta = -1$  gives the Richardson extrapolation, used in the present simulations.

The sequence defined by equation (22) reads, once divided by  $\mu \geq \mu_\infty > 0$ :

$$-\Delta u_{n+1}^* + \mathbf{1}_{B(t)} (\mu \varepsilon)^{-1} u_{n+1}^* = RHS. \quad (23)$$

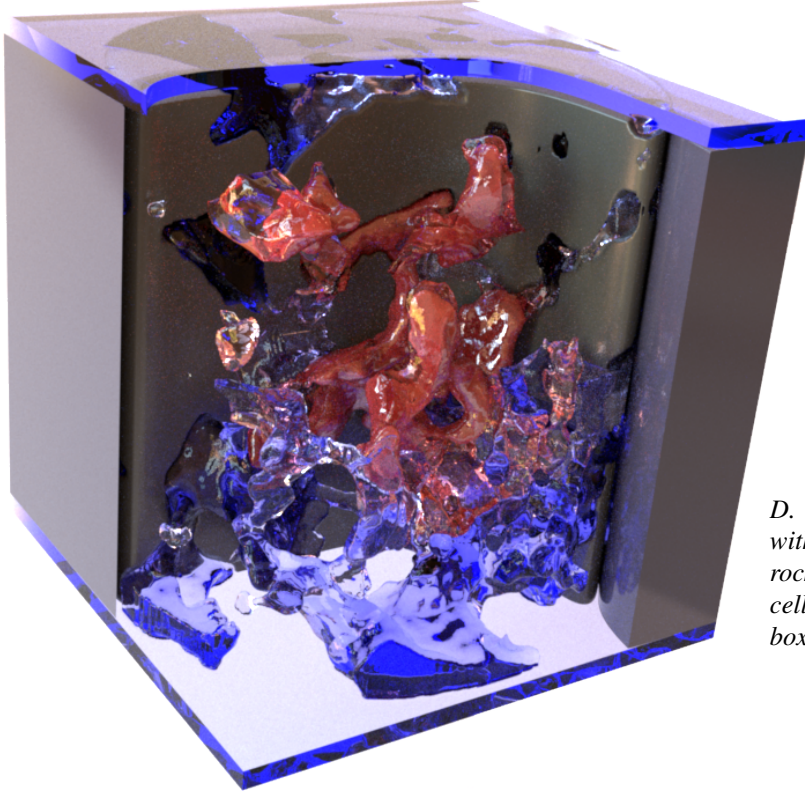
This numerical strategy reduces the grid computations to a sequence of Poisson problems resolution computed with a FFT-based solver FishPack [45] for the numerical evaluation of the projector  $\mathbb{P}$ , and an algebraic multigrid



*A. Solid domain: Union of the rock body and the cylindrical cell (hollow plot).*

*B. Fluid domain*

*C. Isosurfaces of initial function  $\alpha$  (hollow plot).*



*D. Composite view of the fluid with Xanthan concentration, the rock body and the cylindrical cell filling the computational box (hollow plot).*

Figure 3: Initial configuration of a Xanthan flow in a Bentheimer sandstone at its pore-scale (resolution  $257^3$ ). Pictures A and B displays respectively the solid (set  $B$ ) and the fluid domains. Picture C shows three isosurfaces of the initial concentration of Xanthan  $\alpha/\alpha_{max}$  hollowed in order to show the flow inside the pores: levels 0.2 (blue, water with almost no Xanthan), 0.5 (transparent red, low concentration Xanthan) and 1 (red, high concentration Xanthan). Left/right/front/back boundary conditions are periodic, so the penalized domain is allowed to be "square-shaped", and the top/bottom are Dirichlet and Neumann boundary conditions so that  $\partial\Omega \cap \bar{B} = \emptyset$  as for the case 2.F of Figure 2.

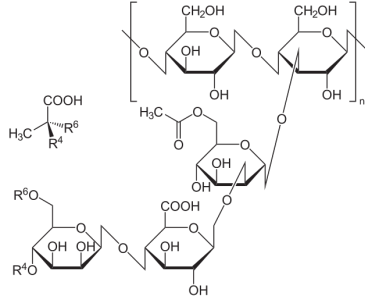
solver MudPack [1] for the non-separable Helmholtz equation (23). This ensures a quasi-linear computational cost with respect to the number of discretization points.

The idea of hybrid Particle-Grid methods is to use particles for the diffusion-transport and a grid-based method for the penalized Stokes problem. A particle is a set  $(\alpha_j, x_j, v_j)$  with a position  $x_j$ , a volume  $v_j$  and a weight  $\alpha_j$ , all of them depending only on time. Particles are a mean to approximate a function in the following sense:

$$\alpha_h(\cdot, t) = \sum_j \alpha_j(t) \delta_{x_j(t)} v_j \quad \text{such that} \quad \alpha * \rho(x, t) = \sum_j \alpha_j(t) \rho(x - x_j(t)) v_j(t) \quad (24)$$

for any regularizing kernel  $\rho$ . The transport equation can then be replaced by a set of differential equations for the





Parameter	Value
Diffusion $\sigma$	$4 \cdot 10^{-12} \text{ m}^2/\text{s}$
Solvent (water) viscosity $\mu_\infty$	$10^{-3} \text{ Pa} \cdot \text{s}$
Carreau index $N - 1$	$-0.614$
$A_\mu$	$0.26 \text{ Pa} \cdot \text{s}$
$B_\mu$	$6.06 \cdot 10^{-4}$
$R_\mu$	$6.5 \cdot 10^{-4}$
$A_\beta$	$2.4 \text{ s}$
$B_\beta$	$6.17 \cdot 10^{-4}$

Table 1: Xanthan molecular structure and its rheological parameters.

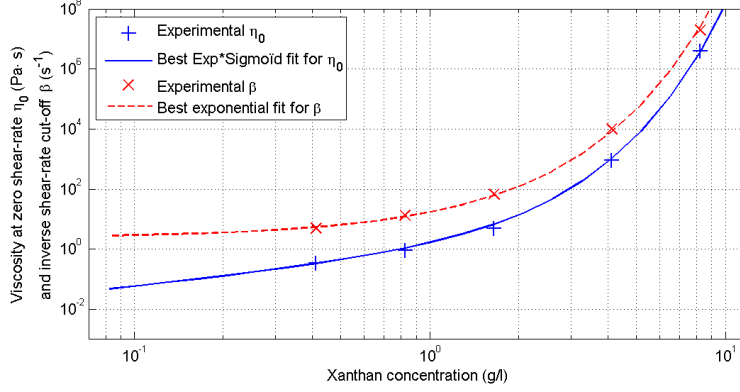


Figure 4: Xanthan viscosity at rest  $\mu_0$  (zero shear-rate) and inverse shear-rate cut-off  $\beta$  with respect to xanthan concentration (g/L) : experimental data (from [30]) and best exponential fits, with sigmoid transition from linear to exponential for the  $\mu_0$ .

particle weights and locations which, for an incompressible flow, reads:

$$\begin{cases} \alpha'_j(t) = [\sigma \Delta \alpha](x_j(t), t) \\ x'_j(t) = u(x_j(t), t) \\ v'_j(t) \equiv 0 \text{ since } \text{div } u \equiv 0 \end{cases} \quad (25)$$

where the velocity field  $u$  is computed through the resolution of the penalized Stokes problem.

This method in particular exhibits nice stability properties, in the sense that, unlike for traditional grid-based methods, the time-step is not constrained by the grid size (that is to say there is no transport CFL condition). For the high resolution simulations that we will consider, this significantly reduces the computational time. In order to transfer data from grid to particles and the way back, high order convolution with strongly compact supported kernels are used. For instance, we use the  $M_3$ ,  $M_5$  and  $M'_4$  kernels (depending on whether the positivity is crucial or not) introduced in [36] and developed further in the context of particle methods in [16].

Since the convergence and consistency of this numerical method have been already investigated in [11, 12], no further description is provided in the present article. The following section addresses the use of this method for two real-world problems treated for the first time, that is to say solving the full coupled PDEs (2,3).

#### 4.1 Application to polymer dynamics in geoscience

We are interested in the transport of Xanthan mixed in water (called the solvent, a Newtonian fluid of constant viscosity  $\mu_\infty$ ) by a viscous flow in a porous rock at its pore scale. This configuration is displayed on Figure 3 and is setup as follows.

First, the solid is defined by the rock core matrix surrounded by a cylindrical cell filling the outer part of the computational box (the solid domain  $B$  is the union of these two sets, as displayed on Figure 3.A). The rock core matrix geometry is a Bentheimer sandstone defined by a set of  $257^3$  voxels of 1 and 0, here obtained by MicroCT X-Ray tomography with a SkyScan 1172 (Bruker). This provides a straightforward characteristic function  $\mathbf{1}_B$  of the solid penalized region and leading to model (3), the penalized version of (1). Despite the fact that the domain here is not moving, this case provides a meaningful application case of (3) and illustrates how the hypothesis (H1) to (H4) are satisfied and what they mean in practice (especially (H4)).

Second, the fluid domain is the open complementary set of  $B$  (shown on Figure 3.B) and is filled with a concentration  $\alpha C_0$  of Xanthan ( $\alpha$  is variable in space and time), where  $C_0 = 600 \text{ mg/L}$  or equivalently  $C_0/\rho =$

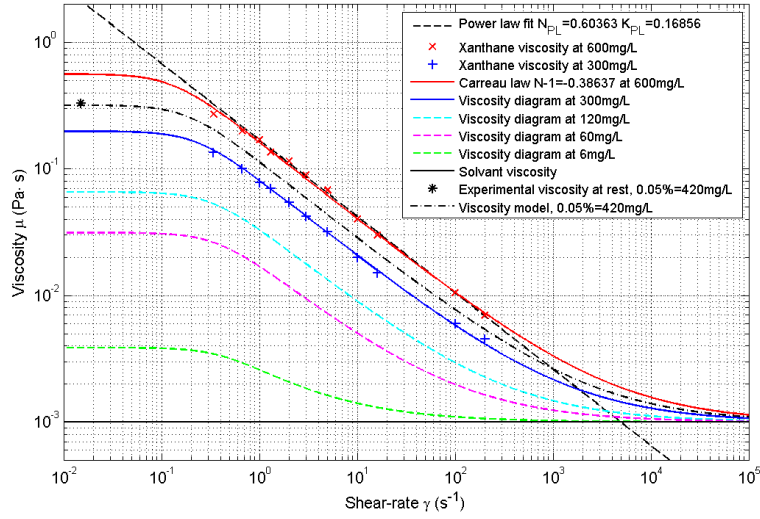


Figure 5: Xanthan shear-thinning feature: Viscosity with respect to the shear-rate. Two curves fit data from [48], with inverse shear-rate cutoff  $\beta$  obtained by the regressions displayed on figure 4 and based on [30].

0.0713%, where  $\rho = 0.842\text{kg/L}$  is its density. The quantity  $\alpha$  is transported and diffused in the fluid domain with a velocity  $u$  solution to the 3D generalized Stokes problem (1). When  $\alpha$  reaches zero, there is no Xanthan at all at this location.

The Xanthan is a miscible polymer, used in Enhanced Oil Recovery (EOR). It exhibits a shear-thinning behavior, and is commonly used as an emulsifier or thickener in human food industry, widely used in gluten-free food production. A usual way to produce Xanthan is by fermentation of corn sugar, wheat or soy with the bacteria *Xanthomonas campestris*. Its rheological properties are quite stable to temperature and acidity variations. These features are close to the Scleroglucan polymer, also used in EOR and reasonably clean since it can also be consumed by bacterial activity, but Xanthan exhibits no yield-stress and thus its micro-scale transport and diffusion is correctly modeled by our coupled Stokes–Transport/Diffusion system (1) involving the Carreau law.

The Carreau law (2) satisfied by this miscible Xanthan reads:

$$\mu(\alpha, D(u)) = \mu_\infty + (\mu_0(\alpha) - \mu_\infty) (1 + \beta(\alpha)^2 \dot{\gamma}^2)^{\frac{N-1}{2}}$$

where  $\dot{\gamma} = \sqrt{2}|D(u)|$  and  $\mu_\infty = 10^{-3}$  is the solvent dynamic viscosity, here water. In this solvent, the polymer diffusion coefficient is  $\sigma = 4 \cdot 10^{-12}\text{m}^2/\text{s}$  (from [44]) and its exponent  $q = 1.386$  can be considered constant due to its very small variations [30], corresponding to a fluid index  $N - 1 = q - 2 = -0.614$ .

To our knowledge, for any miscible polymer, the index  $N$  and the viscosity at rest  $\mu_0$  (zero shear-rate) are slightly or moderately increasing, while the inverse cut-off shear-rate  $\beta$  can be constant, increasing [17] or decreasing [25] with respect to the concentration  $\alpha$ . In our case, the Xanthan polymer exhibits an exponential growth in  $\beta$  [30], an almost constant exponent chosen as  $N = 0.613$ , an exponential growth of  $\eta_0$  for large concentrations ( $\alpha C_0/\rho > 0.01\%$ ) and an affine transition to  $\mu_\infty$  for small concentrations, modeled by a  $1 - e^{-x}$  weighting, dominant for  $\alpha$  close to 0:

$$\mu_0(\alpha) = \mu_\infty + A_\mu e^{\alpha C_0/\rho B_\mu} (1 - e^{-\alpha C_0/\rho R_\mu}) \quad (26)$$

and  $\beta(\alpha) = A_\beta e^{\alpha C_0/\rho B_\beta}$ , with a nominal time  $A_\beta = 2.4\text{s}$ . These curves, with respect to experimental values, are displayed on Figure 4. These five coefficients for salt-free and neutral pH solvent are displayed in the Table 1, and the best fitting curves are displayed on figure 4. The final Carreau law obtained is displayed on figure 5 and all the related parameters are mentioned in Table 1.

Considering these fluid features, on the one hand  $q$  is constant so  $q'(\alpha) = 0$  and hypothesis (H4.1) holds, and on the other hand  $\alpha$  remains in a compact interval  $I \subset \mathbb{R}$  so  $\mu_0(\alpha)$  is bounded, and one gets  $\beta'/\beta = C_0/\rho B_\beta$  so hypothesis (H4.2) is also satisfied. Furthermore, one can notice that the hypothesis (H4.1) is robustly satisfied, that is to say is still satisfied if  $q$  is only  $\mathcal{C}^1(I)$  and lightly deviating from its value such as  $m(\alpha) = 1 - q(\alpha)/2$  remains positive. For any  $\alpha \in I$ , let  $z = 2|D(u)|^2 = \dot{\gamma}^2$  be the square of the shear-rate and  $M > 0$  bounding  $|\mu_0 - \mu_\infty|$ . Indeed, this gives directly that the expression of hypothesis (H4.1) is bounded by

$$M (\max_I |q'|) \frac{\ln(1 + \beta^2 z)}{(1 + \beta^2 z)^{m(\alpha)}} \xrightarrow{z \rightarrow +\infty} 0 \quad (27)$$

and thus is bounded for any  $D$  and  $\alpha \in I$ .

Furthermore, the initial condition of field  $\alpha$  is based on a random field generated by FFTMA algorithm [41, 38]. This method allows to build 3D periodic random scalar fields by the use of fast Fourier transform. A covariance

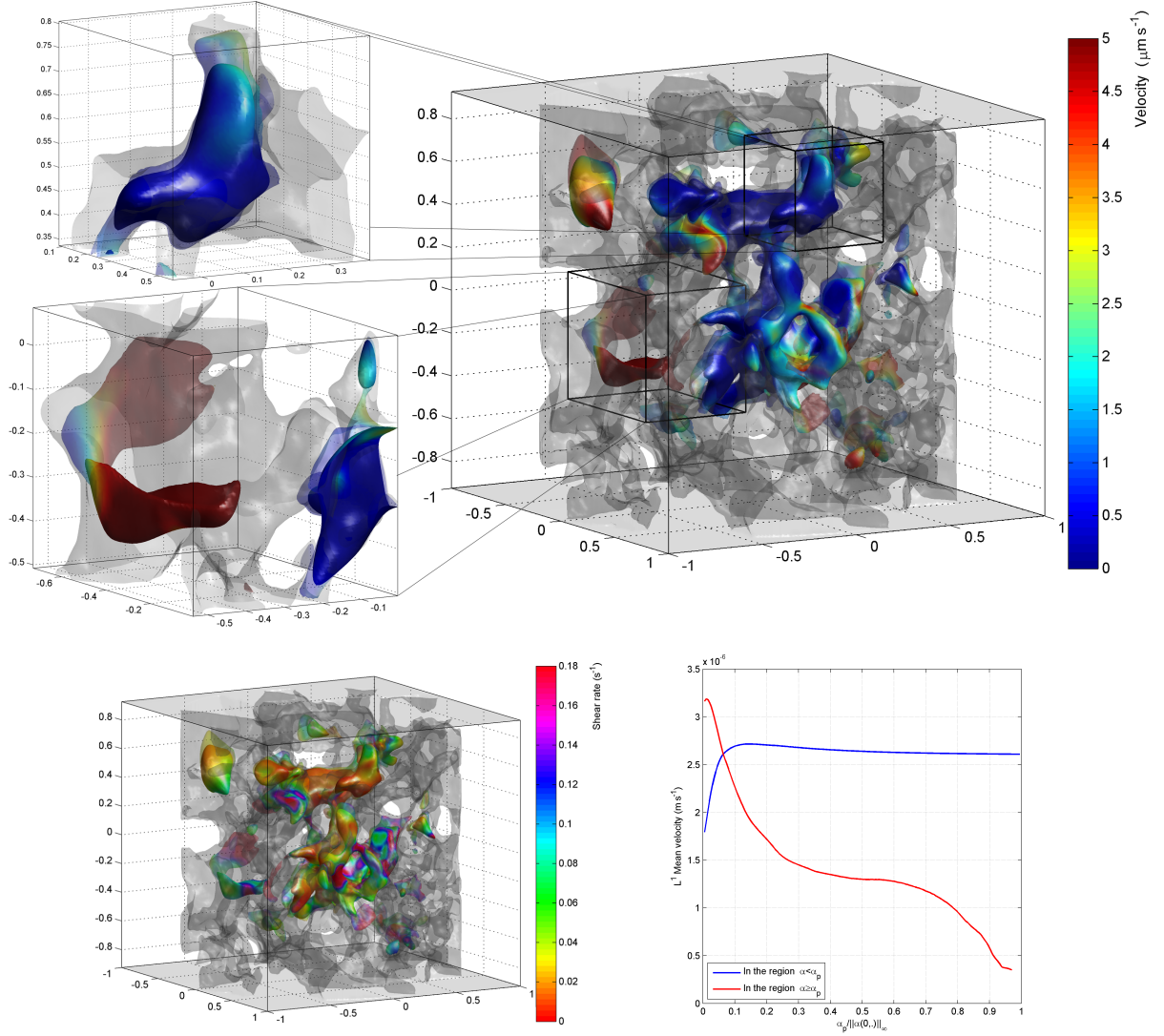


Figure 6: Top picture shows isosurfaces of Xanthan, colored by the velocity, at level  $\alpha/\alpha_{max} = 30\%$ . Initial value is displayed with transparency, while the value after 24 time steps is displayed with solid colors. Zooms exhibit locations with highest and lowest velocity regimes (respectively in red and blue). The bottom left picture is similar but colored by the shear rate. Bottom picture shows the mean velocity of polymer at concentration higher than a level  $\alpha_p$ , quantifying the difference between water and diluted polymer.

field  $C$  is first computed on the domain  $\Omega$  according to a Gaussian model. The associated random field of arithmetic average  $M$ , geometric average  $G$  and variance  $\tau^2$  is given by

$$\tilde{\alpha} = G e^{\tau \omega} \quad \text{with} \quad \omega = \mathcal{F}^{-1} \left[ \sqrt{\mathcal{F}(C)} \mathcal{F} \left\{ M + \mathcal{F}^{-1} \left( \sqrt{\mathcal{F}(C)} \mathcal{F}(Z) \right) \right\} \right] \quad (28)$$

where  $\mathcal{F}$  (respectively  $\mathcal{F}^{-1}$ ) denotes the Fourier transform in  $\mathbb{R}^3$  (respectively the inverse Fourier transform in  $\mathbb{R}^3$ ) and  $Z$  is a gaussian white noise. This random  $\tilde{\alpha}$  is finally cut smoothly on a few voxels from the domain boundary by means of a sigmoid function  $K$  so that the support of  $\alpha = \tilde{\alpha} K \mathbf{1}_{\Omega \setminus B}$  does not intersect  $\partial\Omega$  or  $B$ .

Figure 6 displays the motion of the polymer (initial concentration  $\alpha$  is displayed in transparency, and its value after 24 iterations is displayed in solid). On this figure, coloring shows the shear rate on the one hand and the velocity on the other hand. One can see that some regions are transport dominant, while others at small velocity are diffusion dominant, due both to the shear-thinning feature and the domain shape. Thanks to that computation, we can conclude that the polymer is here 3 to 5 times slower than the water. Despite the fact that the domain is not time-dependent, our coupled model is crucial to capture these physical phenomena.

## 4.2 Application to the bio-mechanics of the human lung mucus

In the lung the tracheobronchial tree is protected from the outer world by the airway surface liquid (ASL). It forms a thin film ( $\sim 10 - 20 \mu m$ ) on the bronchial walls and inhaled agents (dust, pathogens, pollution particles) are trapped therein to prevent lung contaminations. On the bronchial wall micro-metric cilia are constantly beating

Name	Value
Computational domain $\Omega$	$52 \times 13 \times 13 \mu m^3$
Cilia length	$8 \mu m$
Cilia diameter	$0.3 \mu m$
Number of Cilia	10
Beating frequency	$10 Hz$
Metachronal wavelength	$100 \mu m$
PCL viscosity ( $\mu_{PCL} = \mu_\infty$ )	$0.001 Pa \cdot s$
Power-law index ( $N_{ML}$ ) <sup>†</sup>	0.35
Consistency ( $K$ ) <sup>†</sup>	2
Material Time ( $\beta$ ) <sup>†</sup>	$4 \cdot 10^3 s$
Newtonian viscosity ratio ( $\kappa$ ) <sup>*</sup>	20
Viscosity transition stiffness ( $\lambda$ )	10
Transition length ( $\delta H_z$ )	$7 \mu m$
ASL height ( $H_z$ )	$13 \mu m$
Mucin diffusion ( $\nu$ ) <sup>‡</sup>	$10^{-11} m^2 \cdot s^{-1}$

Table 2: Reference parameters for the numerical simulations (gathered from [13, 9, 23, 42, 43]). <sup>‡</sup> only used in computations with mucins advection. <sup>†</sup> only used in non-Newtonian computations. <sup>\*</sup> only used in Newtonian computations.

to propel this ASL film to the trachea, in order to evacuate inhaled agents. It is then swallowed in the stomach. This carpet of cilia is called the lung epithelium (or ciliated epithelium) and this ASL renewal mechanism is called the mucociliary clearance. When it fails the cough attempts to overcome the ASL accumulation to prevent the pathogens proliferation.

Due to the complex structure of the tracheobronchial tree and the micro-metric scale of the flow, a non-invasive experimental study of the mucociliary clearance is impossible. That is why it was intensively studied numerically in the last decades [43] - see [10] for a detailed and more exhaustive bibliography on recent results. Using experimental rheology, the shear-thinning behavior of the ASL was measured and identified, it allows real data inputs in the computational models [32, 40, 10]. These studies conclude that the flow can be modeled by a generalized Stokes problem with shear-thinning effects interacting with immersed obstacles: the beating cilia.

The ASL is a non-homogeneous fluid whose viscosity varies due to proteins: the mucins [6]. These proteins are released on the bronchial wall. They mature and hydrate while they are transported in the ASL film, increasing the viscosity and changing the rheological properties. The viscosity of the ASL and the corresponding rheological parameters are assumed to be depending on a mucins ratio  $\alpha$ , quantifying the mucins maturation: when  $\alpha = 0$  mucins have just been released, the fluid is newtonian and its viscosity is equal to water; when  $\alpha = 1$  mucins are fully polymerized and the fluid is non-Newtonian with shear-thinning effects. A continuous transition between these regimes is modeled with the Carreau rheology involving  $\alpha$  - dependant rheological parameters, similarly to the previous digital rock physics application.

The parameter dependent Carreau law models the regions with a low density of mucins (the bottom part of the ASL), a high density of mucins (the upper part of the ASL), and the transition between both layers. The lower Newtonian part of the fluid baths the cilia environment and is called the periciliary fluid layer (denoted PCL thereafter) and the upper non-Newtonian part the mucus layer (denoted ML).

The function  $\alpha$  is assumed to be the solution to a convection-diffusion equation and the Cilia-ASL interaction is handled using the penalization method, assuming a one-way fluid-structure interaction. This cilia motion can be divided in two parts: the effective stroke (when cilia are polymerizing to beat forward) and the recovery stroke (when cilia are moving backward). A cilium shape and velocity follow the damped wave equation described in [11] with the diameter shown on table 2. The carpet of cilia is a collection of such cilia, with the metachronal delay used in [10].

Finally a no slip boundary condition is imposed on the bronchial wall and a free slip boundary conditions is imposed at the air mucus interface which is assumed to be flat [10]. This leads to the exactly same problem (2,3) analyzed in the previous sections. The rheology is here defined by the following Carreau law using the fluid index  $N(\alpha) = q(\alpha) - 1$ :

$$\mu(\alpha, u) = \mu_\infty + (\mu_0(\alpha) - \mu_\infty) (1 + 2\beta^2 |D(u)|^2)^{\frac{N(\alpha)-1}{2}}$$

where  $\mu_\infty = 10^{-3}$  is the PCL viscosity, equal to the water dynamics viscosity, and the material time  $\beta = 4 \times 10^3 s$  is constant and independent of the mucin dilution.

As established in [10], the fluid index is set to  $N(\alpha) = \alpha N_{ML} + (1 - \alpha)$  and the viscosity is set to  $\mu_0(\alpha) = \mu_\infty (K/\mu_\infty)^\alpha$ , where the consistency  $K$  and the mucus layer fluid index  $N_{ML}$  are displayed on Table 2. Similarly to the digital rock physics configuration, for any  $\alpha > 0$  (and  $\alpha \leq 1$ ), one gets  $q - 2 < 0$  and  $q'(\alpha) = N_{ML} - 1$  so hypothesis (H4.1) is satisfied for  $\alpha > 0$  as the expression decreases with respect to  $|D|$ : the limit and bound



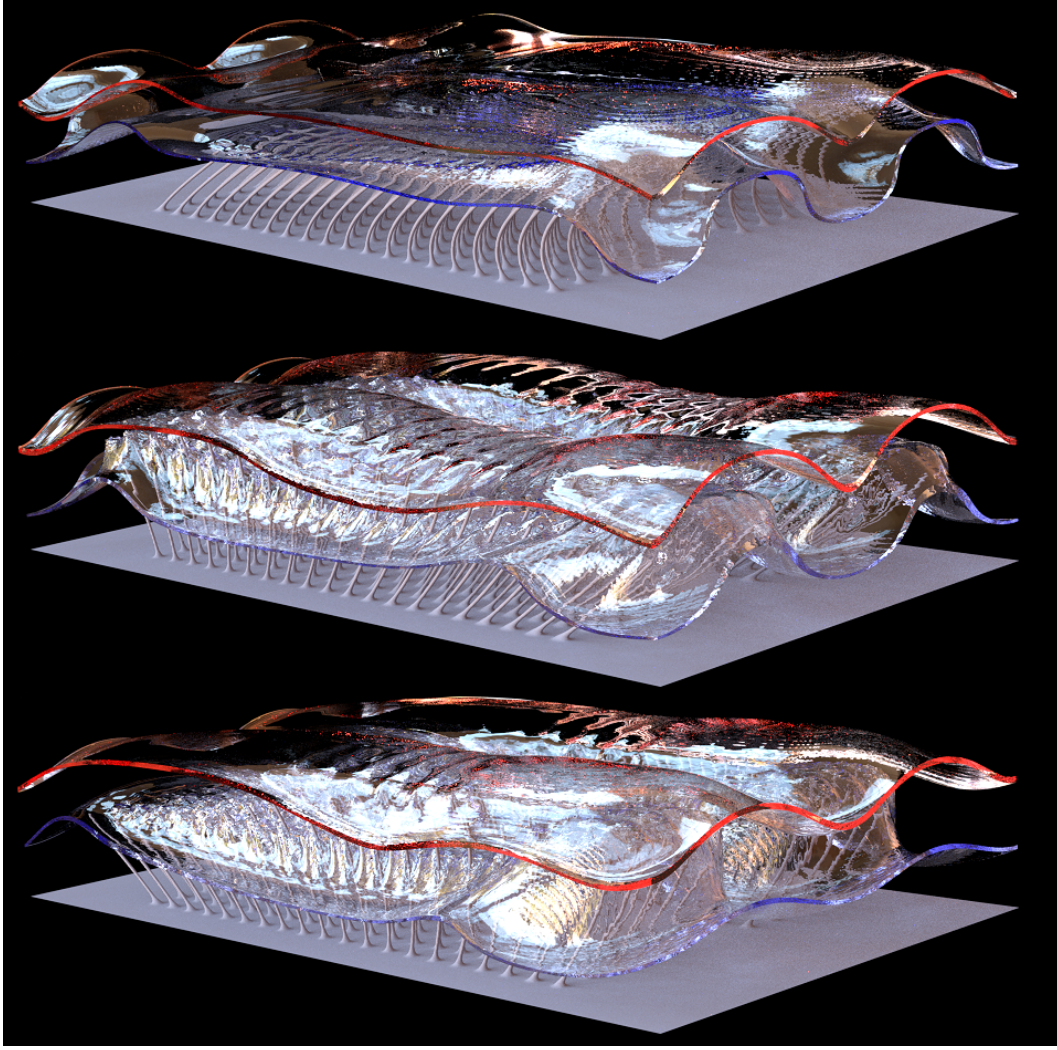


Figure 7: Snapshots of the simulation performed with the parameters of Table 2, with streamwise periodicity, at resolution  $512 \times 256 \times 128$ . Isosurfaces of function  $\alpha$  at levels 0.4 and 0.7 are displayed respectively in blue and red, after 200 and 415 time steps, displayed from top to bottom.

from (27) still holds in the present case. If  $\alpha = 0$ ,  $\mu_0(0) = \mu_\infty$  so the expression is zero and consequently hypothesis (H4.1) holds. The second condition (H4.2) is trivially satisfied since  $\beta' \equiv 0$ .

Four computations of the ASL propelled by beating cilia are presented in this section to investigate the influence of both the transport and non-Newtonian effects. In order to compare these effects the following simulations are computed (see Table 2 for parameters meanings and values):

- with both non-Newtonian and transport effects (analyzed in the previous sections),
- with non-Newtonian effects but no transport, meaning  $\alpha(x, t) = \alpha_0(x) \forall t \geq 0$ ,
- with transport but without non-Newtonian effects, meaning  $\mu(\alpha, u) = \mu(\alpha) = \mu_\infty(1 + \kappa\alpha(x, t))$ ,
- without transport and without non-Newtonian effects, meaning  $\alpha(x, t) = \alpha_0(x) \forall t \geq 0$  and  $\mu(\alpha, u) = \mu(\alpha) = \mu_\infty(1 + \kappa\alpha(x, t))$ ,

where the initial (or stationary, depending on the case considered) function  $\alpha$  is defined by:

$$\alpha(x, y, z) = \frac{\tan^{-1}(\lambda(z/H_z - \delta)) - \tan^{-1}(-\lambda\delta)}{\tan^{-1}(\lambda(1 - \delta)) - \tan^{-1}(-\lambda\delta)}. \quad (29)$$

In all these simulations the other parameters remain identical and are gathered in the Table 2. Each computation involves an array of 100 cilia beating asynchronously with a metachronal wave length of  $100 \mu m$ . Several snapshots of the simulation are presented on Figure 7.

The mucociliary clearance efficiency is quantified by the mean velocity of the mucus layer (the upper part of the ASL). This mean velocity  $\bar{V}(t)$  in the proximal direction ( $x$ ) is computed at each time step, it is then averaged

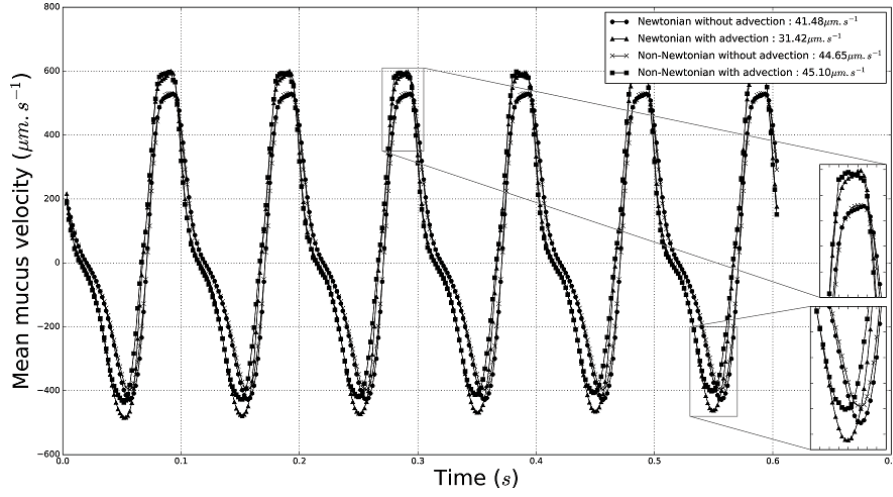


Figure 8: Temporal evolution of the mean mucus velocity  $\bar{V}(t)$  for the four different computations. The value in the caption indicates the temporal average over the simulation.

over six beating cycles ( $\bar{U}$ ):

$$\bar{V}(t) = \int_{\delta H_z}^{H_z} \int_0^{H_y} \int_0^{H_x} \frac{u_x(x, y, z, t)}{H_x H_y H_z (1 - \delta)} dx dy dz \quad \text{and} \quad \bar{U} = \frac{1}{6T} \int_0^{6T} \bar{V}(t) dt \quad (30)$$

On figure 8 the evolution of the quantity  $\bar{V}(t)$  is displayed with respect to  $t$  for each previous simulation. The associated quantity  $\bar{U}$  is displayed in the legend.

For both simulations with transport (respectively without transport), one can observe that the behavior of  $\bar{V}(t)$  is very similar since the curves are almost overlapping. Differences can be observed at the middle of the cilia strokes (effective and recovery) when extreme values of  $\bar{V}(t)$  are reached (see zoomed parts of the figure 8). The highest velocities are reached simultaneously and advected simulations give higher values, whereas lowest velocities are not reached at the same times: advected simulations are in advance with respect to non-advected. For Newtonian computations lowest velocities are similar while the Newtonian-advected simulation reach a lower one.

A consequence of these observations is that  $\bar{U}$  is similar for both non-Newtonian computations, it is higher than for Newtonian cases: a 11% reduction (respectively 32% reduction) is observed for simulations without advection (respectively with advection). The Newtonian simulation with advection presents the lowest  $\bar{U}$ . Hence one can conclude that the non-Newtonian behavior of the mucus significantly increases the mucociliary clearance efficiency, so Newtonian computations underestimate the ASL transport. Moreover at Newtonian regimes the advection has an important role to play: mucociliary clearance is reduced by 21% when mucins transport is neglected.

## 5 Conclusion, perspectives and future work

In this study we have presented the analysis of a system of non-linear partial differential equation modeling the microscale dynamics of a miscible and heterogeneous shear-thinning fluid in its solvent, in a moving domain. The analysis has focused on the well-posedness and the convergence of its penalized version toward the original problem in the time-dependent domain.

The penalized problem is shown to be of interest in order to perform numerical simulation. Indeed, two kinds of heterogeneous flows involving miscible polymers at the micrometer scale have been presented, one in a non-moving domain relative to geoscience, and one in a moving domain relative to life science. It can be noticed that the present model is already valid for the heterogeneous mixing of two shear-thinning fluids moving and diffusing into one another, but there is no usual real-world situation that can easily exhibit this.

An interesting perspective is to introduce a relaxation time with second order stress, as described by the Giesekus model [27, 46], which would describe a wide class of viscoelastic fluids by means of two parameters. Generalization to such models with time-relaxation (Maxwell, Oldroyd or Giesekus) could be of interest in order to give a mathematical framework of the heterogeneity of such fluids, but would involve a large amount of physical parameters which has little chance to be put easily in practice.

Nevertheless, two extensions of this study may be of direct interest. First by focusing on mass transfer with a diffusion  $\sigma$  dependent on the velocity  $u$ . This would be of practical interest for modeling the dispersion of the front between a fluid and a polymer at high Peclet number, as quantified for example in [17]. Second, the case of

Herschel-Bulkley fluids involving yields stress, for which the viscosity exhibits a singularity scaling as  $1/|D(u)|$ : the present results don't hold in this case and such study would require a different analysis.

## A Technical arguments

**Lemma A.1** *Let  $m \in \mathbb{N}^*$ . There exists a constant  $C$  depending only on  $\Omega$  and  $m$  such that for all  $v \in \mathbb{H}^m(\Omega; \mathbb{R}^3)$  we have*

$$\|v\|_{\mathbb{H}^m(\Omega)} \leq C (\|v\|_{\mathbb{L}^2(\Omega)} + \|\operatorname{div} v\|_{\mathbb{H}^{m-1}(\Omega)} + \|\operatorname{curl} v\|_{\mathbb{H}^{m-1}(\Omega)} + \|v \cdot \nu\|_{\mathbb{H}^{m-1/2}(\partial\Omega)})$$

where  $\nu$  is the outward unitary normal on  $\partial\Omega$ . The result remains true if we consider a periodic domain.

**Proof.** See [24] for the proof. The periodic version is easily deduced from [22] section VII.6.1, [24].  $\blacksquare$

**Lemma A.2** *Let  $\Omega$  and  $B$  fulfilling Hypothesis (H1).*

*Let  $A \in \mathcal{C}^0([0, T]; \mathcal{C}^1(\Omega \setminus \bar{B}; S_3(\mathbb{R})))$  (where  $S_3(\mathbb{R})$  is the set of real symmetric matrix in  $M_3(\mathbb{R})$ ). Let  $\lambda$  independent from  $t$  such that for all  $(t, x) \in [0, T] \times \Omega \setminus \bar{B}$  and  $\xi \in \mathbb{R}^3$   $\xi \cdot A(t, x)\xi \geq \lambda|\xi|^2$ .*

*Let  $v \in \mathbb{H}^2(\Omega \setminus \bar{B})$  such that  $v$  has periodic conditions and  $(A(t, y)\nabla v) \cdot \nu = 0$  on  $\Gamma$ . There exists then a constant  $C$  independent from  $t$  such that,*

$$\|v\|_{\mathbb{H}^2(\Omega \setminus \bar{B})} \leq C (\|v\|_{\mathbb{L}^2(\Omega \setminus \bar{B})} + \|\operatorname{div} A(t, \cdot)\nabla v\|_{\mathbb{L}^2(\Omega \setminus \bar{B})}).$$

Moreover, if  $v \in \mathbb{H}^3(\Omega \setminus \bar{B})$ , there exists a constant  $C$  independent from  $t$  such that we have

$$\|\nabla v\|_{\mathbb{H}^2(\Omega \setminus \bar{B})} \leq C (\|\nabla v\|_{\mathbb{L}^2(\Omega \setminus \bar{B})} + \|\operatorname{div} A(t, \cdot)\nabla v\|_{\mathbb{L}^2(\Omega \setminus \bar{B})} + \|\nabla \operatorname{div} A(t, \cdot)\nabla v\|_{\mathbb{L}^2(\Omega \setminus \bar{B})}).$$

**Proof.** These results are straight adaptations of classic ones:

The first result comes from the regularity of the operator  $\mathcal{A}_t = I - \operatorname{div} A(t, \cdot)\nabla$  with the domain

$$D(\mathcal{A}_t) = \{u \in \mathbb{H}^2(\Omega \setminus \bar{B}), (A(t, \cdot)\nabla u) \cdot \nu = 0 \text{ on } \Gamma \cup \sigma, u \text{ has periodic conditions}\}.$$

Following the study performed in [26] for the Dirichlet problem, for all  $f \in \mathbb{L}^2(\Omega \setminus \bar{B})$  the solution  $v$  of  $\mathcal{A}(t)v = f$  lies in  $\mathbb{H}^2(\Omega \setminus \bar{B})$  and there exists a constant  $C$  depending only of  $\lambda$ ,  $\|a_{i,j}\|_{W^{2,\infty}}$  for  $(i, j) \in \{1, 2, 3\}^2$  and  $\Omega \setminus \bar{B}$  such that for all  $t \in [0, T]$

$$\begin{aligned} \|v\|_{\mathbb{H}^2(\Omega \setminus \bar{B})} &\leq C (\|v\|_{\mathbb{L}^2(\Omega \setminus \bar{B})} + \|f\|_{\mathbb{L}^2(\Omega \setminus \bar{B})}) \\ &\leq C' (\|v\|_{\mathbb{L}^2(\Omega \setminus \bar{B})} + \|\operatorname{div} A(t, \cdot)\nabla v\|_{\mathbb{L}^2(\Omega \setminus \bar{B})}). \end{aligned}$$

The second estimate requires an adaptation of the proof of Lemma A.1 based on Hodge decomposition. We need to work with the weighted scalar product defined on  $\mathbb{L}^2(\Omega \setminus \bar{B}; \mathbb{R}^3)$  by  $\langle u, v \rangle = \int_{\Omega \setminus \bar{B}} u \cdot (A(t, \cdot)v) dx$  and adapt the proof in [22] Chapter 7.6.  $\blacksquare$

**Proposition A.3** *Let  $\Omega$  be a regular open bounded set of  $\mathbb{R}^3$ . Let  $v \in \mathbb{H}^1(\Omega)$ . There exists then a constant  $C$  depending only on  $\Omega$  such that*

$$\|v\|_{\mathbb{L}^3(\Omega)} \leq C \|v\|_{\mathbb{L}^2(\Omega)}^{1/2} \|v\|_{\mathbb{H}^1(\Omega)}^{1/2}.$$

Let  $v \in \mathbb{H}^2(\Omega)$ . Then there exists a constant  $C$  depending only on  $\Omega$  such that

$$\|v\|_{\mathbb{L}^\infty(\Omega)} \leq C \|v\|_{\mathbb{H}^1(\Omega)}^{1/4} \|v\|_{\mathbb{H}^2(\Omega)}^{3/4}.$$

**Proof.** These two inequalities are deduced from the Sobolev embeddings of  $\mathbb{H}^{1/2}(\Omega)$  and  $\mathbb{H}^{7/4}(\Omega)$  respectively into  $\mathbb{L}^3(\Omega)$  and  $\mathbb{L}^\infty(\Omega)$  (see [2] section 4) and from the estimates of the  $\mathbb{H}^{1/2}(\Omega)$  and  $\mathbb{H}^{7/4}(\Omega)$  norms thanks to the interpolation space theory (see [35] section I).  $\blacksquare$

**Proposition A.4** *Let  $\Psi \in \mathcal{C}^0(0, T; \mathcal{C}^2(\mathbb{R}^3; \mathbb{R}^3))$  such that for all  $t \in [0, T]$   $\Psi(t)$  is a  $\mathcal{C}^2$ -diffeomorphism of  $\mathbb{R}^3$ . Let  $\Omega$  be a regular open bounded set of  $\mathbb{R}^3$  and  $\Omega_t = \Psi(t, \Omega)$ .*

*Let  $v \in \mathbb{H}^1(\Omega_t)$ . Then there exists a constant  $C$  depending only on  $\Omega$ ,  $\|\Psi(\cdot)\|_{\mathbb{L}^\infty(0, T; W^{1,\infty}(\Omega))}$  and  $\|\Psi(\cdot)^{-1}\|_{\mathbb{L}^\infty(0, T; W^{1,\infty}(\Omega))}$  such that for all  $t \in [0, T]$*

$$\|v\|_{\mathbb{L}^3(\Omega_t)} \leq C \|v\|_{\mathbb{L}^2(\Omega_t)}^{1/2} \|v\|_{\mathbb{H}^1(\Omega_t)}^{1/2}.$$

*Let  $v \in \mathbb{H}^2(\Omega_t)$ . Then there exists a constant  $C$  depending only on  $\Omega$ ,  $\|\Psi(\cdot)\|_{\mathbb{L}^\infty(0, T; W^{2,\infty}(\Omega))}$  and  $\|\Psi(\cdot)^{-1}\|_{\mathbb{L}^\infty(0, T; W^{2,\infty}(\Omega))}$  such that for all  $t \in [0, T]$*

$$\|v\|_{\mathbb{L}^\infty(\Omega_t)} \leq C \|v\|_{\mathbb{H}^1(\Omega_t)}^{1/4} \|v\|_{\mathbb{H}^2(\Omega_t)}^{3/4}.$$

**Proof.** We let  $u(t, x) = v(t, \Psi(t)(x))$  for all  $(t, x) \in [0, T] \times \Omega$  and apply Prop. A.3 to get the result. ■

**Theorem A.5 (Aubin-Lions-Simon)** *Let  $B_0 \subset B_1 \subset B_2$  three Banach spaces. We assume that the injection of  $B_1$  into  $B_2$  is bounded and that the injection of  $B_0$  into  $B_1$  is compact. Let  $p, r$  such that  $1 \leq p, r \leq +\infty$ . Let  $T > 0$ . We note*

$$E_{p,r} = \left\{ v \in \mathbb{L}^p([0, T[; B_0), \frac{dv}{dt} \in \mathbb{L}^r([0, T[; B_2) \right\}.$$

- If  $p < +\infty$ , the injection of  $E_{p,r}$  into  $\mathbb{L}^p([0, T[, B_1)$  is compact.
- If  $p = +\infty$  and  $r > 1$ , the injection of  $E_{p,r}$  into  $\mathcal{C}^0([0, T]; B_1)$  is compact.

**Proof.** See [4] section II.5.5. ■

**Proposition A.6 (Trace and lifting theorems in a time-dependent domain  $B(t) = \Psi(t, B)$ )** *Let  $B$  be an open set in  $\Omega$  having the uniform  $\mathcal{C}^2$ -regularity property and  $\Psi \in \mathcal{C}^0([0, T]; \mathcal{C}^2(\Omega; \mathbb{R}^3))$  such that for all  $t \in [0, T]$   $\Psi(t)$  is a  $\mathcal{C}^2$ -diffeomorphism on  $\Omega$ . There exists a time-independent constant  $C > 0$  such that for all  $t \in [0, T]$  and for all  $v \in \mathbb{H}^2(B(t))$*

$$\|v|_{\partial B(t)}\|_{H^{3/2}(\partial B(t))} \leq C \|v\|_{H^2(B(t))}.$$

*Moreover, there exists a time-independent constant  $C' > 0$  such that for all  $t \in [0, T]$  and for all  $g \in \mathbb{H}^{3/2}(\partial B(t))$  there exists a lifting  $v$  of  $g$  in  $\mathbb{H}^2(B(t))$  such that*

$$\|v\|_{\mathbb{H}^2(B(t))} \leq C' \|g\|_{\mathbb{H}^{3/2}(\partial B(t))}.$$

**Proof.** Thanks to the function  $\Psi$  we transport the classical trace and lifting theorem in the time-dependent context. Since  $\Psi \in \mathcal{C}^0([0, T]; \mathcal{C}^2(\Omega; \mathbb{R}^3))$  and  $\Psi(t)$  is a  $\mathcal{C}^2$ -diffeomorphism for all  $t \in [0, T]$  there exists some constants  $(a, b) \in (\mathbb{R}^{+*})^2$  such that

$$\forall (t, x) \in [0, T] \times \Omega \quad a \leq J(t, x) \leq b,$$

where  $J(t, x) = |\det \nabla_x \Psi|(t, x)$ . Moreover there exists some constants  $(c, c') \in (\mathbb{R}^{+*})^2$  such that  $\forall (t, x) \in [0, T] \times \Omega$

$$\|\Psi(t, \cdot)\|_{W^{2,\infty}(\Omega)} \leq c \quad \text{and} \quad \|\Psi^{-1}(t, \cdot)\|_{W^{2,\infty}(\Omega)} \leq c'.$$

Let  $v \in \mathbb{H}^2(B(t))$  and for all  $x \in B$  let  $w_t(x) = v(\Psi(t, x))$ . There exists some constant  $K_{a,c} > 0$  depending only on  $(a, c)$  such that

$$\forall t \in [0, T] \quad w_t \in \mathbb{H}^2(B) \quad \text{and} \quad \|w_t\|_{\mathbb{H}^2(B)} \leq K_{a,c} \|v\|_{\mathbb{H}^2(B(t))}.$$

In the same way, by writing  $v(y) = w_t(\Psi^{-1}(t, y))$  for all  $y \in B_t$ , there exists some constant  $K'_{b,c'} > 0$  such that

$$\forall t \in [0, T] \quad \|v\|_{\mathbb{H}^2(B(t))} \leq K'_{b,c'} \|w_t\|_{\mathbb{H}^2(B)}.$$

Following [37] section 3.8, the space  $\mathbb{H}^s(\Omega)$ , where  $\Omega \subset \mathbb{R}^n$  and  $s = k + \theta$  with  $k \in \mathbb{N}$  and  $0 < \theta < 1$ , is defined by

$$\mathbb{H}^s(\Omega) = \left\{ v \in \mathbb{H}^k(\Omega), \int_{\Omega} \int_{\Omega} \frac{|D^{\alpha} v(x) - D^{\alpha} v(y)|^2}{|x - y|^{n+2\theta}} dx dy < +\infty, \forall \alpha \in \mathbb{N}^n \text{ with } |\alpha| = k \right\}$$

with the norm

$$\|v\|_{\mathbb{H}^s(\Omega)} = \left( \|v\|_{\mathbb{H}^k(\Omega)}^2 + \sum_{\alpha \in \mathbb{N}^n, |\alpha|=k} \int_{\Omega} \int_{\Omega} \frac{|D^{\alpha} v(x) - D^{\alpha} v(y)|^2}{|x - y|^{n+2\theta}} dx dy \right)^{1/2}.$$

Using this definition for the space  $\mathbb{H}^{3/2}(\partial B_t)$  we obtain in the same way the existence of two constants  $(C, C') \in (\mathbb{R}^{+*})^2$  such that

$$\forall t \in [0, T] \quad C \|w_t\|_{\mathbb{H}^{3/2}(\partial B)} \leq \|v\|_{\mathbb{H}^{3/2}(\partial B(t))} \leq C' \|w_t\|_{\mathbb{H}^{3/2}(\partial B)}.$$

We now apply the classical trace and lifting theorem to the function  $w_t$  and obtain the desired results thanks to the previous inequalities. ■

**Remark:** The lifting theorem can also be generalized in  $\Omega \setminus \bar{B}(t)$  with time-independent constants to the case of periodic boundary conditions,  $v_{\perp} = 0$  and  $\theta_i v_{\parallel} + (1 - \theta_i) \frac{\partial v_{\parallel}}{\partial \nu} = 0$  on  $[0, T] \times \Gamma_i$ ,  $i = 1..I$  and  $v|_{\partial B(t)} = g$ .



## A.1 Variable exponent Lebesgue spaces

To deal with the variable  $q(x)$ -laplacian type problem we introduce the following spaces (See [20] section 3.1).

**Definition A.1** Let  $\Omega$  be an open subset in  $\mathbb{R}^3$  equipped with  $\mathcal{B}(\Omega)$  and the Lebesgue measure. We let  $\mathcal{P}(\Omega)$  the set of all measurable functions  $q : \Omega \rightarrow [1, +\infty]$ . We call  $q \in \mathcal{P}(\Omega)$  a variable exponent on  $\Omega$ . We let  $q^- = \text{ess inf}_{x \in \Omega} q(x)$  and  $q^+ = \text{ess sup}_{x \in \Omega} q(x)$ . If  $q^+ < +\infty$ , then we call  $q$  a bounded variable exponent. If  $q \in \mathcal{P}(\Omega)$ , we define  $q' \in \mathcal{P}(\Omega)$  the dual variable exponent of  $q$  by

$$\frac{1}{q(x)} + \frac{1}{q'(x)} = 1, \quad \forall x \in \Omega.$$

For all  $f$  measurable function on  $\Omega$  we let

$$\rho_{q(\cdot)}(f) = \int_{\Omega} |f(x)|^{q(x)} dx,$$

and we define the variable exponent Lebesgue space  $L^{q(\cdot)}(\Omega)$  as

$$L^{q(\cdot)}(\Omega) = \{f \in L(\Omega), \exists \lambda > 0 \text{ such that } \rho_{q(\cdot)}(\lambda f) < +\infty\}$$

and equip it with the norm

$$\|f\|_{L^{q(\cdot)}(\Omega)} = \|f\|_{q(\cdot)} = \inf \left\{ \lambda > 0, \rho_{q(\cdot)}\left(\frac{f}{\lambda}\right) \leq 1 \right\}.$$

**Proposition A.7** Let  $q \in \mathcal{P}(\Omega)$  with  $q^- < +\infty$ . If  $\rho_{q(\cdot)}(f) > 0$  or  $q^+ < +\infty$ , then

$$\min \left\{ (\rho_{q(\cdot)}(f))^{1/q^-}, (\rho_{q(\cdot)}(f))^{1/q^+} \right\} \leq \|f\|_{q(\cdot)} \leq \max \left\{ (\rho_{q(\cdot)}(f))^{1/q^-}, (\rho_{q(\cdot)}(f))^{1/q^+} \right\}.$$

**Theorem A.8** If  $q \in \mathcal{P}(\Omega)$ , then  $L^{q(\cdot)}(\Omega)$  is a Banach function space. Moreover if  $(f_k)_{k \in \mathbb{N}}$  is a Cauchy sequence in  $L^{q(\cdot)}(\Omega)$ , there exists a subsequence of  $(f_k)_{k \in \mathbb{N}}$  which converges almost everywhere to a measurable function. If  $1 < q^- < q^+ < +\infty$ , the space  $L^{q(\cdot)}(\Omega)$  is reflexive,  $(L^{q(\cdot)}(\Omega))' = L^{q'(\cdot)}(\Omega)$  and for all  $g \in L(\Omega)$

$$\frac{1}{2} \|g\|_{q'(\cdot)} \leq \|g\|_{(L^{q(\cdot)})'} \leq 2 \|g\|_{q'(\cdot)}.$$

**Lemma A.9** Let  $(q, r, s) \in \mathcal{P}(\Omega)^3$  be such that for almost all  $x \in \Omega$

$$\frac{1}{s(x)} = \frac{1}{q(x)} + \frac{1}{r(x)}.$$

Then for all  $f \in L^{q(\cdot)}(\Omega)$  and  $g \in L^{r(\cdot)}(\Omega)$

$$\|fg\|_{s(\cdot)} \leq \left( \left( \frac{s}{q} \right)^+ + \left( \frac{s}{r} \right)^+ \right) \|f\|_{q(\cdot)} \|g\|_{r(\cdot)}.$$

**Lemma A.10** If  $1 \leq q \leq 2$  and  $(a, b) \in \mathbb{R}^n$  then

$$< (1 + \beta^2 |b|^2)^{q/2-1} b - (1 + \beta^2 |a|^2)^{q/2-1} a, b - a > \geq (q-1) |b-a|^2 (1 + \beta^2 |a|^2 + \beta^2 |b|^2)^{\frac{q-2}{2}}$$

**Proof.** The proof is inspired from [33]. We have

$$\begin{aligned} & (1 + \beta^2 |b|^2)^{q/2-1} b - (1 + \beta^2 |a|^2)^{q/2-1} a \\ &= \int_0^1 \frac{d}{dt} \left( (1 + \beta^2 |a + t(b-a)|^2)^{q/2-1} (a + t(b-a)) \right) dt \\ &= \int_0^1 (1 + \beta^2 |a + t(b-a)|^2)^{q/2-1} (b-a) dt \\ &+ (q-2) \int_0^1 \beta^2 (1 + \beta^2 |a + t(b-a)|^2)^{q/2-2} \langle a + t(b-a), b-a \rangle (a + t(b-a)) dt. \end{aligned}$$

Then

$$\begin{aligned} & < (1 + \beta^2 |b|^2)^{q/2-1} b - (1 + \beta^2 |a|^2)^{q/2-1} a, b - a > \\ &= |b-a|^2 \int_0^1 (1 + \beta^2 |a + t(b-a)|^2)^{q/2-1} dt \\ &+ (q-2) \int_0^1 \beta^2 (1 + \beta^2 |a + t(b-a)|^2)^{q/2-2} \langle a + t(b-a), b-a \rangle^2 dt \\ &\geq (q-1) |b-a|^2 \int_0^1 (1 + \beta^2 |a + t(b-a)|^2)^{q/2-1} dt \end{aligned}$$

Since  $q \leq 2$  and  $|a + t(b-a)|^2 \leq |a|^2 + |b|^2$  for all  $t \in [0, 1]$  we have

$$< (1 + \beta^2 |b|^2)^{q/2-1} b - (1 + \beta^2 |a|^2)^{q/2-1} a, b - a > \geq (q-1) |b-a|^2 (1 + \beta^2 |a|^2 + \beta^2 |b|^2)^{q/2-1}.$$

■

## A.2 Non-linear analysis

We remind some definitions and results (See [47] Section 25.3, 26.1, 27.1 and 27.2)

**Definition A.2** Let  $V$  a real reflexive Banach space. An operator  $A : V \rightarrow V'$  is called

- bounded on  $V$  if and only if for all  $\Omega$  bounded subset of  $V$ ,  $A(\Omega)$  is bounded in  $V'$ ,
- monotone if and only if  $\forall (u, v) \in V^2$ ,  $\langle A(u) - A(v), u - v \rangle \geq 0$ ,
- strongly monotone if and only if there exists  $c > 0$  such that  $\forall (u, v) \in V^2$ ,  $\langle A(u) - A(v), u - v \rangle \geq c\|u - v\|^2$ ,
- coercive if and only if  $\frac{\langle A(v), v \rangle}{\|v\|} \rightarrow +\infty$  as  $\|v\| \rightarrow +\infty$ ,
- pseudo-monotone if and only if  $u_n \rightharpoonup u$  as  $n \rightarrow +\infty$  and

$$\overline{\lim}_{n \rightarrow +\infty} \langle Au_n, u_n - u \rangle \leq 0$$

implies that

$$\langle Au, u - w \rangle \leq \lim_{n \rightarrow +\infty} \langle Au_n, u_n - w \rangle \text{ for all } w \in V,$$

- hemi-continuous on  $V$  if and only if for all  $(u, v, w) \in V^3$ , the application  $\lambda \mapsto \langle A(u + \lambda v), w \rangle$  is continuous from  $\mathbb{R}$  to  $\mathbb{R}$ .

**Proposition A.11** Let  $V$  be a real reflexive Banach space and  $A : V \rightarrow V'$  an operator.

- If  $A$  is monotone and hemi-continuous then  $A$  is pseudo-monotone.
- If  $A$  is pseudo-monotone then  $A$  fulfills the properties (P) and (M)

(P) if  $u_n \rightharpoonup u$  as  $n \rightarrow +\infty$  then

$$\overline{\lim}_{n \rightarrow +\infty} \langle Au_n, u_n - u \rangle \geq 0.$$

(M) if  $u_n \rightharpoonup u$ ,  $Au_n \rightarrow b$  as  $n \rightarrow +\infty$  and  $\overline{\lim}_{n \rightarrow +\infty} \langle Au_n, u_n \rangle \leq \langle b, u \rangle$ , then  $Au = b$ .

The following non-linear version of Lax-Milgram theorem is taken from [34] Section 2.2.

**Theorem A.12 (Non-linear Lax-Milgram)** Let  $V$  a reflexive separable Banach space. Let  $A : V \rightarrow V'$  such that  $A$  is bounded and hemi-continuous on  $V$ , monotone and coercive, then  $A$  is a map from  $V$  onto  $V'$ , i.e.  $\forall f \in V' \exists u \in V, A(u) = f$ .

## B Regularity and $\mathbb{L}^2$ estimates in the proof of Theorem 2.7

We take the scalar product of (16) with  $\beta$  and obtain

$$\begin{aligned} \frac{1}{2} \frac{d}{dt} \|\beta\|_2^2 + \sigma \|{}^t J_t^{-1} \nabla \beta\|_2^2 &= - \int_{\Omega \setminus \bar{B}} (v \cdot {}^t J_t^{-1} \nabla \beta) \beta \, dy \\ &\leq C \|v\|_{\mathbb{H}^1} \|\beta\|_3 \|{}^t J_t^{-1} \nabla \beta\|_2 \\ &\leq C \|v\|_{\mathbb{H}^1} \left( \|\beta\|_2 \|{}^t J_t^{-1} \nabla \beta\|_2 + \|\beta\|_2^{1/2} \|{}^t J_t^{-1} \nabla \beta\|_2^{3/2} \right) \\ &\leq C (\|v\|_{\mathbb{H}^1}^2 + \|v\|_{\mathbb{H}^1}^4) \|\beta\|_2 + \sigma \frac{1}{2} \|{}^t J_t^{-1} \nabla \beta\|_2^2. \end{aligned}$$

We differentiate (16) with respect to  $y$  and take the scalar product with  $J_t^{-1} {}^t J_t^{-1} \nabla \beta$ . Thanks to some integrations by parts, we get

$$\begin{aligned} \frac{1}{2} \frac{d}{dt} \|{}^t J_t^{-1} \nabla \beta\|_2^2 + \sigma \|A(t, \cdot) \beta\|_2^2 &= \int_{\Omega \setminus \bar{B}} (v \cdot {}^t J_t^{-1} \nabla \beta) A(t, y) \beta \, dy + \int_{\Omega \setminus \bar{B}} (\partial_t {}^t J_t^{-1}(y)) \nabla \beta \cdot {}^t J_t^{-1}(y) \nabla \beta \, dy \\ &\leq C \|v\|_{\mathbb{H}^1} \|{}^t J_t^{-1}\|_3 \|A(t, \cdot) \beta\|_2 + C \|{}^t J_t^{-1} \nabla \beta\|_2^2 \\ &\leq C \|v\|_{\mathbb{H}^1} \left( \|{}^t J_t^{-1}\|_2 \|A(t, \cdot) \beta\|_2 + \|{}^t J_t^{-1}\|_2^{1/2} \|A(t, \cdot) \beta\|_2^{3/2} \right) + C \|{}^t J_t^{-1} \nabla \beta\|_2^2 \\ &\leq C (1 + \|v\|_{\mathbb{H}^1}^2 + \|v\|_{\mathbb{H}^1}^4) \|{}^t J_t^{-1} \nabla \beta\|_2^2 + \frac{\sigma}{2} \|A(t, \cdot) \beta\|_2^2. \end{aligned}$$

We apply the operator  $A(t, \cdot)$  to (16) and take the scalar product with  $A(t, y)\beta$ . We get

$$\frac{1}{2} \frac{d}{dt} \|A(t, \cdot)\beta\|_2^2 + \int_{\Omega \setminus \bar{B}} (-\partial_t A(t, y))\beta - \sigma A(t, y)^2 \beta + A(t, y) (v \cdot {}^t J_t^{-1}(y) \nabla \beta) A(t, y)\beta dy = 0 \quad (31)$$

Since on  $\gamma$ ,  $J_t^{-1t} J_t^{-1} \nabla \beta \cdot \nu = 0$ , we have on  $\Gamma$

$$\begin{aligned} 0 &= \partial_t (\nu \cdot J_t^{-1t} J_t^{-1} \nabla \beta) \\ &= \nu \cdot \partial_t (J_t^{-1t} J_t^{-1}) \nabla \beta + \nu \cdot J_t^{-1t} J_t^{-1} \nabla \partial_t \beta \\ &= \nu \cdot \partial_t (J_t^{-1t} J_t^{-1}) \nabla \beta + \nu \cdot J_t^{-1t} J_t^{-1} \nabla [-v(t, y) \cdot \nabla \beta + \sigma A(t, y)\beta]. \end{aligned}$$

Then by performing an integration by parts of (31) we get

$$\begin{aligned} &\frac{1}{2} \frac{d}{dt} \|A(t, \cdot)\beta\|_2^2 + \int_{\gamma} \nu \cdot [-\partial_t (J_t^{-1t} J_t^{-1}) \nabla \beta + J_t^{-1t} J_t^{-1} \nabla (-\sigma A(t, \cdot)\beta + (v \cdot {}^t J_t^{-1} \nabla \beta))] A(t, \cdot)\beta d\sigma \\ &+ \sigma \|{}^t J_t^{-1} \nabla A(t, \cdot)\beta\|_2^2 + \int_{\Omega \setminus \bar{B}} J_t \partial_t (J_t^{-1t} J_t^{-1}) \nabla \beta \cdot {}^t J_t^{-1} \nabla A(t, \cdot)\beta dy \\ &+ \int_{\Omega \setminus \bar{B}} {}^t J_t^{-1} \nabla (v \cdot {}^t J_t^{-1} \nabla \beta) \cdot {}^t J_t^{-1} \nabla A(t, \cdot)\beta dy = 0. \end{aligned}$$

Thanks to the boundary condition we have

$$\begin{aligned} &\frac{1}{2} \frac{d}{dt} \|A(t, \cdot)\beta\|_2^2 + \sigma \|{}^t J_t^{-1} \nabla A(t, \cdot)\beta\|_2^2 \\ &\leq C \|{}^t J_t^{-1} \nabla \beta\|_2 \|{}^t J_t^{-1} \nabla A(t, \cdot)\beta\|_2 + C \|\nabla v\|_2 \|{}^t J_t^{-1} \nabla \beta\|_{\infty} \|{}^t J_t^{-1} \nabla A(t, \cdot)\beta\|_2 \\ &\quad + C \|v\|_6 \|{}^t J_t^{-1} \nabla \beta\|_3 \|{}^t J_t^{-1} \nabla A(t, \cdot)\beta\|_2 \\ &\leq C \|{}^t J_t^{-1} \nabla \beta\|_2 \|{}^t J_t^{-1} \nabla A(t, \cdot)\beta\|_2 + C \|v\|_{\mathbb{H}^1} \|{}^t J_t^{-1} \beta\|_{\mathbb{H}^{3/2}} \|{}^t J_t^{-1} \nabla A(t, \cdot)\beta\|_2 \\ &\quad + C \|v\|_{\mathbb{H}^1} \|\nabla {}^t J_t^{-1} \nabla \beta\|_{\mathbb{H}^{1/2}} \|{}^t J_t^{-1} \nabla A(t, \cdot)\beta\|_2 \\ &\leq C \|{}^t J_t^{-1} \nabla \beta\|_2 \|{}^t J_t^{-1} \nabla A(t, \cdot)\beta\|_2 \\ &\quad + C \|v\|_{\mathbb{H}^1} \left( \|{}^t J_t^{-1} \beta\|_{\mathbb{H}^1} \|{}^t J_t^{-1} \nabla A(t, \cdot)\beta\|_2 + \|{}^t J_t^{-1} \beta\|_{\mathbb{H}^1}^{1/2} \|{}^t J_t^{-1} \nabla A(t, \cdot)\beta\|_2^{3/2} \right) \\ &\quad + C \|v\|_{\mathbb{H}^1} \left( \|\nabla {}^t J_t^{-1} \nabla \beta\|_2 \|{}^t J_t^{-1} \nabla A(t, \cdot)\beta\|_2 + \|\nabla {}^t J_t^{-1} \nabla \beta\|_2^{1/2} \|{}^t J_t^{-1} \nabla A(t, \cdot)\beta\|_2^{3/2} \right) \\ &\leq C (1 + \|v\|_{\mathbb{H}^1}^2 + \|v\|_{\mathbb{H}^1}^4) \|\beta\|_{\mathbb{H}^2} + \frac{\sigma}{2} \|{}^t J_t^{-1} \nabla A(t, \cdot)\beta\|_2^2. \end{aligned}$$

We then have

$$y' + \sigma (\|{}^t J_t^{-1} \nabla \beta\|_2^2 + \|A(t, \cdot)\beta\|_2^2 + \|{}^t J_t^{-1} \nabla A(t, \cdot)\beta\|_2^2) \leq C (1 + \|v\|_{\mathbb{H}^1}^2 + \|v\|_{\mathbb{H}^1}^4) y$$

where  $y = \|\beta\|_2^2 + \|{}^t J_t^{-1} \nabla \beta\|_2^2 + \|A(t, \cdot)\beta\|_2^2$ . Since  $v \in \mathbb{L}^\infty(0, T; \mathbb{H}^1(\Omega \setminus \bar{B}))$  we deduce thanks to Gronwall lemma that there exists  $C > 0$  such that for all  $t \in [0, T]$

$$y \leq y(0) \exp \left( CT(1 + \|v\|_{\mathbb{L}^\infty(0, T; \mathbb{H}^1(\Omega \setminus \bar{B}))}^2 + \|v\|_{\mathbb{L}^\infty(0, T; \mathbb{H}^1(\Omega \setminus \bar{B}))}^4) \right).$$

Back to the original equation on  $\alpha$  we obtain the announced result.

## C Analysis tools for penalized problem

### C.1 Proof of Proposition 3.1

We take the difference between the two non-linear equations (15) and we get

$$\left\{ \begin{array}{l} -\operatorname{div} \left( 2 \left( \mu_\infty + (\mu_0(\alpha) - \mu_\infty)(1 + 2\beta^2(\alpha)|D(u)|^2)^{q(\alpha)/2-1} \right) D(u) \right) \\ \quad + \operatorname{div} \left( 2 \left( \mu_\infty + (\mu_0(\alpha') - \mu_\infty)(1 + 2\beta^2(\alpha)|D(u')|^2)^{q(\alpha')/2-1} \right) D(u') \right) \\ \quad + \frac{\mathbf{1}_{B(t)}}{\varepsilon} (u - u') = -\nabla(p - p') \text{ in } [0, T] \times \Omega, \\ \operatorname{div}(u - u') = 0 \text{ in } [0, T] \times \Omega, \\ (u - u')_\perp = 0 \text{ on } [0, T] \times \Gamma, \\ \theta_i(u_\parallel - u'_\parallel) + (1 - \theta_i) \left( \frac{\partial u_\parallel}{\partial \nu} - \frac{\partial u'_\parallel}{\partial \nu} \right) = 0 \text{ on } [0, T] \times \Gamma_i, \ i = 1..I, \\ (u - u') \text{ has periodic conditions otherwise.} \end{array} \right.$$

This equation rewrites as

$$-\operatorname{div} (2\mu_\infty D(u - u')) - \operatorname{div} (h(\alpha, D(u)) - h(\alpha', D(u'))) + \frac{\mathbf{1}_{B(t)}}{\varepsilon} (u - u') = -\nabla(p - p')$$

with  $h(\alpha, D) = (\mu_0(\alpha) - \mu_\infty) (1 + 2\beta^2(\alpha)|D|^2)^{q(\alpha)/2-1} D$ .  
Taking the scalar product in  $\mathbb{L}^2(\Omega)$  by  $(u - u')$  for a.e.  $t \in [0, T]$  we get

$$2 \int_{\Omega} \mu_\infty |D(u - u')|^2 dx + \int_{\Omega} (\phi(1) - \phi(0)) dx + \frac{1}{\varepsilon} \|u - u'\|_{\mathbb{L}^2(B(t))}^2 = 0 \quad (32)$$

where we let  $\phi : [0, 1] \rightarrow \mathbb{R}$  the application defined for all  $s \in [0, 1]$  by

$$\begin{aligned} \phi(s) &= h(\alpha' + s(\alpha - \alpha'), D(u' + s(u - u'))) : D(u - u') \\ &= 2(\mu_0(\alpha_s) - \mu_\infty)(1 + 2\beta^2(\alpha_s)|D_s|^2)^{\frac{q(\alpha_s)}{2}-1} (D_s : D(u - u')), \end{aligned}$$

where  $D_s = D(u' + s(u - u'))$  and  $\alpha_s = \alpha' + s(\alpha - \alpha')$ .

We have  $\phi(1) - \phi(0) = \int_0^1 \phi'(s) ds$  where

$$\phi'(s) = A_1 + A_2 + A_3 + A_4 + A_5,$$

$$\begin{aligned} A_1 &= 2(\mu_0(\alpha_s) - \mu_\infty) (1 + 2\beta^2(\alpha_s)|D_s|^2)^{\frac{q(\alpha_s)}{2}-1} |D(u - u')|^2 \\ A_2 &= 2\beta^2(\alpha_s) (\mu_0(\alpha_s) - \mu_\infty) (q(\alpha_s) - 2) (1 + 2\beta^2(\alpha_s)|D_s|^2)^{\frac{q(\alpha_s)}{2}-2} (D_s : D(u - u'))^2 \\ A_3 &= 2\mu'_0(\alpha_s)(\alpha - \alpha') (1 + 2\beta^2(\alpha_s)|D_s|^2)^{\frac{q(\alpha_s)}{2}-1} (D_s : D(u - u')) \\ A_4 &= (\mu_0(\alpha_s) - \mu_\infty) q'(\alpha_s)(\alpha - \alpha')(D_s : D(u - u')) (1 + 2\beta^2(\alpha_s)|D_s|^2)^{\frac{q(\alpha_s)}{2}-1} \ln(1 + 2\beta^2(\alpha_s)|D_s|^2) \\ A_5 &= 4(\mu_0(\alpha_s) - \mu_\infty)(q(\alpha_s) - 2) (1 + 2\beta^2(\alpha_s)|D_s|^2)^{\frac{q(\alpha_s)}{2}-2} \beta(\alpha_s)\beta'(\alpha_s)(\alpha - \alpha')|D_s|^2(D_s : D(u - u')) \end{aligned}$$

Consequently, one gets

$$\begin{aligned} A_1 + A_2 &= 2(\mu_0(\alpha_s) - \mu_\infty) (1 + 2\beta^2(\alpha_s)|D_s|^2)^{\frac{q(\alpha_s)}{2}-1} \left( |D(u - u')|^2 + (q(\alpha_s) - 2) \frac{2\beta^2(\alpha_s)(D_s : D(u - u'))^2}{1 + 2\beta^2(\alpha_s)|D_s|^2} \right) \\ &\geq 2(\mu_0(\alpha_s) - \mu_\infty) (1 + 2\beta^2(\alpha_s)|D_s|^2)^{\frac{q(\alpha_s)}{2}-1} (q(\alpha_s) - 1) |D(u - u')|^2 \end{aligned}$$

thus  $A_1 + A_2 \geq 0$ . Moreover

$$\begin{aligned} |A_3| &\leq 2 \left\| \frac{\partial \mu_0}{\partial \alpha} \right\|_{\infty} |\alpha - \alpha'| |D_s| |D(u - u')| \\ |A_4| &\leq \sup_{\alpha, |D|} \left| (\mu_0(\alpha) - \mu_\infty) q'(\alpha) (1 + 2\beta^2(\alpha)|D|^2)^{\frac{q(\alpha)}{2}-1} \ln(1 + 2\beta^2(\alpha)|D|^2) \right| \\ &\quad \times |\alpha - \alpha'| |D_s| |D(u - u')| \\ |A_5| &\leq \left\| (\mu_0 - \mu_\infty)(q - 2) \frac{\beta'}{\beta} \right\|_{\infty} |\alpha - \alpha'| |D_s| |D(u - u')|. \end{aligned}$$

Back to equation (32) we get

$$2\mu_\infty \int_{\Omega} |D(u - u')|^2 dx + \int_{\Omega} \int_0^1 \underbrace{(A_1 + A_2)}_{\geq 0} + A_3 + A_4 + A_5 ds dx + \frac{1}{\varepsilon} \|u - u'\|_{\mathbb{L}^2(B(t))}^2 = 0$$

so

$$2\mu_\infty \int_{\Omega} |D(u - u')|^2 dx + \frac{1}{\varepsilon} \|u - u'\|_{\mathbb{L}^2(B(t))}^2 \leq C \|\alpha - \alpha'\|_{\infty} (\|D(u)\|_{\mathbb{L}^2(\Omega)} + \|D(u')\|_{\mathbb{L}^2(\Omega)}) \|D(u - u')\|_{\mathbb{L}^2(\Omega)}.$$

Then

$$\mu_\infty \|D(u - u')\|_{\mathbb{L}^2(\Omega)}^2 + \frac{1}{\varepsilon} \|u - u'\|_{\mathbb{L}^2(B(t))}^2 \leq K \left( \|D(u)\|_{\mathbb{L}^2(\Omega)}^2 + \|D(u')\|_{\mathbb{L}^2(\Omega)}^2 \right) \|\alpha - \alpha'\|_{\mathbb{L}^\infty(\Omega)}^2,$$

and for all  $t \in [0, T]$ ,

$$\begin{aligned} \mu_\infty \|D(u - u')(t, \cdot)\|_{\mathbb{L}^2(\Omega)}^2 + \frac{1}{\varepsilon} \|u - u'\|_{\mathbb{L}^2(B(t))}^2 \\ \leq K \left( \|D(u)\|_{\mathbb{L}^\infty(0, T; \mathbb{L}^2(\Omega))}^2 + \|D(u')\|_{\mathbb{L}^\infty(0, T; \mathbb{L}^2(\Omega))}^2 \right) \|(\alpha - \alpha')(t, \cdot)\|_{\mathbb{L}^\infty(\Omega)}^2. \end{aligned}$$

which concludes the proof. ■

## C.2 Proof of Proposition 3.2

To perform some estimates we use the diffeomorphism  $\Psi$  as in Th.2.7. We let  $\beta(t, y) = (\alpha - \alpha')(t, \Psi_t(y))$  which fulfills :

$$\begin{cases} \partial_t \beta + v \cdot {}^t J_t^{-1} \nabla \beta - \sigma A(t, y) \beta = -(v - v') \cdot {}^t J_t^{-1} \nabla \beta_2 & \text{in } \Omega \setminus \bar{B} \\ J_t^{-1} {}^t J_t^{-1} \nabla \beta \cdot \nu = 0 & \text{on } ([0, T] \times \Gamma) \cup \Sigma, \\ \beta \text{ has periodic conditions otherwise,} \\ \beta(0, \cdot) = 0 & \text{in } \Omega \setminus \bar{B}(0), \end{cases} \quad (33)$$

where  $\beta_2(t, y) = \alpha'(t, \Psi_t(y))$ ,  $v(t, y) = u(t, \Psi_t(y)) - \partial_t \Psi_t(y)$  and  $v'(t, y) = u'(t, \Psi_t(y)) - \partial_t \Psi_t(y)$ .

$\mathbb{L}^2$  estimate: we take the scalar product of (33) with  $\beta$  in  $\mathbb{L}^2(O \setminus \bar{B})$  and get

$$\begin{aligned} & \frac{1}{2} \frac{d}{dt} \|\beta\|_2^2 + \sigma \|{}^t J_t^{-1} \nabla \beta\|_2^2 \\ &= - \int_{\Omega \setminus \bar{B}} (v - v') \cdot {}^t J_t^{-1} \nabla \beta_2 \beta \, dy - \int_{\Omega \setminus \bar{B}} v \cdot {}^t J_t^{-1} \nabla \beta \beta \, dx \\ &\leq \|{}^t J_t^{-1} \nabla \beta_2\|_2 \|v - v'\|_6 \|\beta\|_3 + \|v\|_6 \|\beta\|_3 \|{}^t J_t^{-1} \nabla \beta\|_2 \\ &\leq C \|\beta_2\|_{\mathbb{H}^1} \|v - v'\|_{\mathbb{H}^1} \|\beta\|_{\mathbb{H}^1} + C \|v\|_{\mathbb{H}^1} \|{}^t J_t^{-1} \nabla \beta\|_2 \left( \|\beta\|_2 + \|\beta\|_2^{1/2} \|{}^t J_t^{-1} \nabla \beta\|_2^{1/2} \right) \\ &\leq C \|\beta_2\|_{\mathbb{H}^1}^2 \|v - v'\|_{\mathbb{H}^1}^2 + C (1 + \|v\|_{\mathbb{H}^1}^2 + \|v\|_{\mathbb{H}^1}^4) \|\beta\|_2^2 + \frac{\sigma}{2} \|{}^t J_t^{-1} \nabla \beta\|_{\mathbb{L}^2(\Omega \setminus \bar{B})}^2. \end{aligned}$$

$\mathbb{H}^1$  estimate: we take the scalar product of (33) with  $-A(t, y)\beta$  in  $\mathbb{L}^2(\Omega \setminus \bar{B})$  and get

$$\begin{aligned} & \frac{1}{2} \frac{d}{dt} \|{}^t J_t^{-1} \nabla \beta\|_2^2 + \sigma \|A(t, \cdot) \beta\|_2^2 \\ &= \int_{\Omega \setminus \bar{B}} (v \cdot {}^t J_t^{-1} \nabla \beta) A(t, y) \beta \, dy + \int_{\Omega \setminus \bar{B}} (v - v') \cdot {}^t J_t^{-1} \nabla \beta_2 A(t, y) \beta \, dy \\ &\leq \|v\|_6 \|{}^t J_t^{-1} \nabla \beta\|_3 \|A(t, \cdot) \beta\|_2 + \|v - v'\|_6 \|{}^t J_t^{-1} \nabla \beta_2\|_3 \|A(t, \cdot) \beta\|_2 \\ &\leq C (\|v\|_{\mathbb{H}^1}^2 + \|v\|_{\mathbb{H}^1}^4) \|\beta\|_{\mathbb{H}^1}^2 + C \|\beta_2\|_{\mathbb{H}^2}^2 \|v - v'\|_{\mathbb{H}^1(\Omega)}^2 + \frac{\sigma}{2} \|A(t, \cdot) \beta\|_2^2. \end{aligned}$$

This implies that

$$\frac{d}{dt} \|\beta\|_{\mathbb{H}^1}^2 + \sigma (\|{}^t J_t^{-1} \nabla \beta\|_2^2 + \|A(t, \cdot) \beta\|_2^2) \leq C (1 + \|v\|_{\mathbb{H}^1}^2 + \|v\|_{\mathbb{H}^1}^4) \|\beta\|_{\mathbb{H}^1}^2 + C \|\beta_2\|_{\mathbb{H}^2}^2 \|v - v'\|_{\mathbb{H}^1}^2$$

We let  $y = \|\beta\|_{\mathbb{H}^1}^2$  and  $y_1 = \|{}^t J_t^{-1} \nabla \beta\|_2^2 + \|A(t, \cdot) \beta\|_2^2$ . Thanks to the regularity results on  $v$ , there exist  $k \in \mathbb{L}^1(0, T)$  and a constant  $C$  depending only on  $\Omega$ ,  $\|\alpha_0\|_{\mathbb{H}^2(\Omega)}$ ,  $f$ ,  $\bar{u}$  such that for all  $0 \leq t \leq T$ ,

$$y' + \sigma y_1 \leq k(t)y + C \|v - v'\|_{\mathbb{H}^1}^2.$$

Since  $y(0) = 0$ , we obtain thanks to Gronwall's lemma that for all  $t \in [0, T]$ ,

$$\begin{aligned} y(t) + \sigma \int_0^t y_1(s) \, ds &\leq \int_0^t C \|(v - v')(s, \cdot)\|_{\mathbb{H}^1(\Omega)}^2 \exp \left( \int_s^t k(s') \, ds' \right) \, ds \\ &\leq C \exp(\|k\|_{\mathbb{L}^1(0, T)}) \|v - v'\|_{\mathbb{L}^2(0, t; \mathbb{H}^1(\Omega))}^2 \leq C' \|v - v'\|_{\mathbb{L}^2(0, t; \mathbb{H}^1(\Omega))}^2. \end{aligned}$$

Back to the original coordinates we get the announced results. ■

## C.3 Proof of Proposition 3.3

This result is the consequence of propositions 3.1 and 3.2: for all  $t \in [0, T]$  we have

$$\begin{aligned} & \|G(u) - G(u')\|_{\mathbb{L}^2(0, t; \mathbb{H}^1(\Omega))}^2 \\ &\leq C \int_0^t \|(\alpha - \alpha')(s, \cdot)\|_{\mathbb{L}^\infty(\Omega)}^2 \, ds \\ &\leq C \int_0^t \|(\alpha - \alpha')(s, \cdot)\|_{\mathbb{L}^\infty(\Omega \setminus \bar{B}(\cdot))}^2 \, ds \\ &\leq C \int_0^t \|(\alpha - \alpha')(s, \cdot)\|_{\mathbb{H}^{7/4}(\Omega \setminus \bar{B}(\cdot))}^2 \, ds \\ &\leq C \int_0^t \|(\alpha - \alpha')(s, \cdot)\|_{\mathbb{H}^1(\Omega \setminus \bar{B}(\cdot))}^{1/2} \|(\alpha - \alpha')(s, \cdot)\|_{\mathbb{H}^2(\Omega \setminus \bar{B}(\cdot))}^{3/2} \, ds \\ &\leq C \left( \int_0^t \|(\alpha - \alpha')(s, \cdot)\|_{\mathbb{H}^1(\Omega \setminus \bar{B}(\cdot))}^2 \, ds \right)^{1/4} \left( \int_0^t \|(\alpha - \alpha')(s, \cdot)\|_{\mathbb{H}^2(\Omega \setminus \bar{B}(\cdot))}^2 \, ds \right)^{3/4} \\ &\leq C \left( \int_0^t \|u - u'\|_{\mathbb{L}^2(0, s; \mathbb{H}^1(\Omega \setminus \bar{B}(\cdot)))}^2 \, ds \right)^{1/4} \|u - u'\|_{\mathbb{L}^2(0, t; \mathbb{H}^1(\Omega \setminus \bar{B}(\cdot)))}^{3/4} \\ &\leq C t^{1/4} \|u - u'\|_{\mathbb{L}^2(0, t; \mathbb{H}^1(\Omega \setminus \bar{B}(\cdot)))}. \end{aligned}$$

Then there exists a time  $0 < T^* < T$  such that for all  $0 \leq t \leq T^*$ ,

$$\|G(u) - G(u')\|_{\mathbb{L}^2(0, T^*; \mathbb{H}^1(\Omega))} \leq \frac{1}{2} \|u - u'\|_{\mathbb{L}^2(0, T^*; \mathbb{H}^1(\Omega))}.$$

Moreover  $T^*$  depends on  $T, \Omega, O_p, f, \bar{u}$  and  $\alpha_0$ . ■

## C.4 Proof of Proposition 3.4

We have

$$\mu(\alpha, u)D(u) - \mu(\alpha', u')D(u') = \Phi(1) - \Phi(0) = \int_0^1 \Phi'(s) ds,$$

where  $\Phi(s) = \mu(\alpha_s, u_s)D_s$  with  $\alpha_s = \alpha' + s(\alpha - \alpha')$ ,  $u_s = u' + s(u - u')$ ,  $D_s = D(u' + s(u - u'))$  and

$$\begin{aligned} \Phi'(s) = & \mu_\infty D(u - u') + (\mu_0(\alpha_s) - \mu_\infty)(1 + 2\beta^2(\alpha_s)|D_s|^2)^{\frac{q(\alpha_s)}{2}-1} D(u - u') \\ & + \mu'_0(\alpha_s)(1 + 2\beta^2(\alpha_s)|D_s|^2)^{\frac{q(\alpha_s)}{2}-1} (\alpha - \alpha') D_s \\ & + 2(\mu_0(\alpha) - \mu_\infty)(1 + 2\beta^2(\alpha)|D_s|^2)^{\frac{q(\alpha_s)}{2}-2} (q(\alpha_s) - 2)\beta^2(\alpha_s)(D_s : D(u - u')) D_s \\ & + (\mu_0(\alpha) - \mu_\infty)(1 + 2\beta^2(\alpha_s)|D_s|^2)^{\frac{q(\alpha_s)}{2}-1} \frac{q'(\alpha_s)}{2} \ln(1 + 2\beta^2(\alpha)|D_s|^2) (\alpha - \alpha') D_s \\ & + 2(\mu_0(\alpha) - \mu_\infty)(1 + 2\beta^2(\alpha_s)|D_s|^2)^{\frac{q(\alpha_s)}{2}-2} (q(\alpha_s) - 2)\beta(\alpha_s)\beta'(\alpha_s)|D_s|^2 (\alpha - \alpha') D_s \end{aligned}$$

Following the proof of Prop. 3.1, we obtain

$$\begin{aligned} |\Phi'(s)| \leq & \mu_\infty |D(u - u')| + (\mu_0(\alpha_s) - \mu_\infty) |D(u - u')| + |\mu'_0(\alpha_s)| |\alpha - \alpha'| |D_s| \\ & + (\mu_0(\alpha_s) - \mu_\infty)(2 - q(\alpha_s)) \left(1 + \left|\frac{\beta'(\alpha_s)}{\beta(\alpha_s)}\right|\right) |D(u - u')| \\ & + \sup_{\alpha, D} \left| (\mu_0(\alpha) - \mu_\infty)(1 + 2\beta^2(\alpha)|D|^2)^{\frac{q(\alpha)}{2}-1} \frac{q'(\alpha)}{2} \ln(1 + 2\beta^2(\alpha)|D|^2) \right| |\alpha - \alpha'| |D_s| \\ \leq & C |D(u - u')| + C' |\alpha - \alpha'| |D_s|. \end{aligned}$$

Then

$$\begin{aligned} & \|(\mu(\alpha, u)D(u) - \mu(\alpha', u')D(u'))(t, \cdot)\|_{\mathbb{L}^2(\Omega)} \\ & \leq C \|D(u - u')(t, \cdot)\|_{\mathbb{L}^2(\Omega)} + C' (\|D(u)(t, \cdot)\|_{\mathbb{L}^2(\Omega)} + \|D(u')(t, \cdot)\|_{\mathbb{L}^2(\Omega)}) \|(\alpha - \alpha')(t, \cdot)\|_{\mathbb{L}^\infty(\Omega)}. \end{aligned}$$

Estimations in Theorem 2.6 conclude the proof. ■

## Acknowledgments

The authors thank P. Moonen and F. Guerton from of UMS CNRS-UPPA-Total 3360 DMEX for the DRP data, and P. Laurençot for fruitful discussions. The financial contribution of the Carnot Institute ISIFoR and Conseil Départemental Pyrénées-Atlantiques (CD64) is greatly acknowledged.

## References

- [1] John C. Adams. mudpack: Multigrid portable fortran software for the efficient solution of linear elliptic partial differential equations. *Applied Mathematics and Computation*, 34(2, Part 2):113–146, November 1989.
- [2] Robert A. Adams and John J. F. Fournier. *Sobolev Spaces*. Academic Press, June 2003.
- [3] E. C. Bingham, *Fluidity and Plasticity*, McGraw-Hill, New York, 1922.
- [4] Franck Boyer and Pierre Fabrie. *Éléments d'analyse pour l'étude de quelques modèles d'écoulements de fluides visqueux incompressibles*. Springer, December 2005.
- [5] Franck Boyer and Pierre Fabrie. *Mathematical Tools for the Study of the Incompressible Navier-Stokes Equations and Related Models*. Springer, 2013.
- [6] Brian Button, Li-Heng Cai, Camille Ehre, Mehmet Kesimer, David B. Hill, John K. Sheehan, Richard C. Boucher, and Michael Rubinstein. Periciliary brush promotes the lung health by separating the mucus layer from airway epithelia. *Science (New York, N.Y.)*, 337(6097):937–941, August 2012.

- [7] Gilles Carbou and Pierre Fabrie. Boundary layer for a penalization method for viscous incompressible flow. *Differential Equations*, 8(12):1453–1480, 2003.
- [8] P. Carreau. Rheological equations from molecular network theories, *Trans. Soc. Rheol.*, 16:99, 1972.
- [9] R. Chatelin, D. Anne-Archard, M. Murriss-Espin, D. Sanchez, M. Thiriet, A. Didier, and P. Poncet. Chapter 5 - Modeling Cystic Fibrosis and Mucociliary Clearance. In Sid M. Becker, editor, *Modeling of Microscale Transport in Biological Processes*, pages 113–154. Academic Press, 2017. DOI: 10.1016/B978-0-12-804595-4.00005-5.
- [10] Robin Chatelin, Dominique Anne-Archard, Marlène Murriss-Espin, Marc Thiriet, and Philippe Poncet. Numerical and experimental investigation of mucociliary clearance breakdown in cystic fibrosis. *Journal of Biomechanics*, 53:56 – 63, 2017.
- [11] Robin Chatelin and Philippe Poncet. A hybrid grid-particle method for moving bodies in 3D stokes flow with variable viscosity. *SIAM Journal on Scientific Computing*, 35(4):B925–B949, August 2013.
- [12] Robin Chatelin and Philippe Poncet. Hybrid grid–particle methods and penalization: A Sherman–Morrison–Woodbury approach to compute 3D viscous flows using FFT. *Journal of Computational Physics*, 269:314–328, July 2014.
- [13] Robin Chatelin and Philippe Poncet. A parametric study of mucociliary transport by numerical simulations of 3d non-homogeneous mucus. *Journal of Biomechanics*, 49(9):1772–1780, June 2016.
- [14] Robin Chatelin, David Sanchez, and Philippe Poncet. Analysis of the penalized 3d variable viscosity stokes equations coupled to diffusion and transport. *ESAIM: Mathematical Modelling and Numerical Analysis*, 50(2):565–591, March 2016.
- [15] Georges-Henri Cottet, Roland Hildebrand, Petros Koumoutsakos, Chloé Mimeau, Iraj Mortazavi, and Philippe Poncet. Passive and active flow control using vortex methods. In *6th International Conference on Vortex Flows and Vortex Models*, Nagoya, Japan, November 2014.
- [16] GH Cottet and PD Koumoutsakos. *Vortex methods: theory and practice*. IOP Publishing, 2001.
- [17] Maria Veronica D’Angelo, Harold Auradou, Catherine Allain, and Jean-Pierre Hulin. Pore scale mixing and macroscopic solute dispersion regimes in polymer flows inside two-dimensional model networks. *Physics of Fluids*, 19(3):033103, March 2007.
- [18] A. Decoene, S. Martin, B. Maury. Microscopic modelling of active bacterial suspensions. *Mathematical Modelling of Natural Phenomena*, 6(5):98–129, 2011.
- [19] Lars Diening. Theoretical and Numerical Results for Electrorheological Fluids. 2002.
- [20] Lars Diening, Petteri Harjulehto, Peter Hästö, and Michael Ruzicka. *Lebesgue and Sobolev Spaces with Variable Exponents*, volume 2017 of *Lecture Notes in Mathematics*. Springer Berlin Heidelberg, Berlin, Heidelberg, 2011.
- [21] Lars Diening, Peter Hästö, and Aleš Nekvinda. Open problems in variable exponent Lebesgue and Sobolev spaces. In *FSDONA04 Proceedings, Milovy, Czech Republic*, volume 3858. Citeseer, 2004.
- [22] G. Duvaut and Jacques Louis Lions. Les inéquations en mécanique et en physique, 1972.
- [23] John V Fahy and Burton F Dickey. Airway mucus function and dysfunction. *The New England journal of medicine*, 363(23):2233–2247, December 2010. PMID: 21121836.
- [24] C. Foias and R. Temam. Remarques sur les équations de navier-stokes stationnaires et les phénomènes successifs de bifurcation. *Annali della Scuola Normale Superiore di Pisa - Classe di Scienze*, 5(1):29–63, 1978.
- [25] Joana L.M.S. Ganter, Michel Milas, and Marguerite Rinaudo. On the viscosity of sodium poly(styrene sulphonate), a flexible polyelectrolyte. *Polymer*, 33(1):113–116, January 1992.
- [26] David Gilbarg and Neil S. Trudinger. *Elliptic Partial Differential Equations of Second Order*. Springer Berlin Heidelberg, Berlin, Heidelberg, 1983.
- [27] H. Giesekus. A simple constitutive equation for polymer fluids based on the concept of deformation dependent tensorial mobility, *J. Non-Newtonian Fluid Mech.*, 11:69, 1982.

- [28] J.L. Guermond, P. Mineev, and Jie Shen. An overview of projection methods for incompressible flows. *Computer Methods in Applied Mechanics and Engineering*, 195:6011–6045, September 2006.
- [29] W. H. Herschel, R. Bulkley. Konsistenzmessungen von Gummi-Benzollösungen. *Kolloid Zeitschrift*, 39:291–300, 1926.
- [30] CP Kelco. Keltrol/Kelzan, Xanthan gum book 8th edition, March 2007.
- [31] Marcin Krotkiewski, Ingeborg S. Ligaarden, Knut-Andreas Lie, and Daniel W. Schmid. On the importance of the stokes-brinkman equations for computing effective permeability in karst reservoirs. *Communications in Computational Physics*, 2011.
- [32] Samuel K. Lai, Ying-Ying Wang, Denis Wirtz, and Justin Hanes. Micro- and macrorheology of mucus. *Advanced Drug Delivery Reviews*, 61(2):86–100, February 2009.
- [33] Peter Lindqvist. *Notes on the p-Laplace equation*. Univ., 2006.
- [34] Jacques-Louis Lions. *Quelques méthodes de résolution des problèmes aux limites non linéaires*, volume 31. Dunod Paris, 1969.
- [35] J. L. Lions, E. Magenes. *Problèmes aux limites non homogènes et applications, volume 1*. 1968.
- [36] J. J. Monaghan. Extrapolating B Splines for Interpolation. *Journal of Computational Physics*, 60(2):253–262, 1985.
- [37] Jindřich Nečas. *Les méthodes directes en théorie des équations elliptiques*. Academia, 1967.
- [38] B. Noetinger, L. Hume, R. Chatelin, and P. Poncet. The effective viscosity of a random mixture of fluids. *Physical Review Fluids*, 3:014103, 2018.
- [39] J. G. Oldroyd. On the formulation of rheological equations of state, *Proc. Roy. Soc. London*, 200:523, 1950.
- [40] E Puchelle, J M Zahm, and D Quemada. Rheological properties controlling mucociliary frequency and respiratory mucus transport. *Biorheology*, 24(6):557–563, 1987. PMID: 3502756.
- [41] M. Le Ravalec, B. Noetinger, and L. H. Hu. The FFT moving average (FFT-MA) generator: an efficient numerical method for generating and conditioning gaussian simulations. *Mathematical Geology*, 32:701–723, 2000.
- [42] M. J. Sanderson and M. A. Sleight. Ciliary activity of cultured rabbit tracheal epithelium: beat pattern and metachrony. *Journal of Cell Science*, 47(1):331–347, January 1981.
- [43] D.J. Smith, E.A. Gaffney, and J.R. Blake. Modelling mucociliary clearance. *Respiratory Physiology & Neurobiology*, 163:178–188, November 2008.
- [44] G.A. Stahl and D.N. Schulz. *Water-Soluble Polymers for Petroleum Recovery*. Springer US, 2012.
- [45] Paul Swarztrauber and Roland Sweet. Efficient FORTRAN subprograms for the solution of elliptic partial differential equations (abstract). *SIGNUM Newsl.*, 10(4), December 1975.
- [46] Maria D. Torres, Bart Hallmark, D. Ian Wilson, and Loic Hilliou. Natural Giesekus fluids: Shear and extensional behavior of food gum solutions in the semidilute regime. *AIChE Journal*, 60(11):3902–3915, November 2014.
- [47] Eberhard Zeidler. *Nonlinear Functional Analysis and its Applications II/B*. Springer New York, New York, NY, 1990.
- [48] L. Zhong, M. Oostrom, M.J. Truex, V.R. Vermeul, and J.E. Szecsody. Rheological behavior of xanthan gum solution related to shear thinning fluid delivery for subsurface remediation. *Journal of Hazardous Materials*, 244-245:160–170, January 2013.