



**HAL**  
open science

## **Cytokines profiling by multiplex analysis in experimental arthritis: which pathophysiological relevance for articular versus systemic mediators?**

Joseph Paquet, Jean-Christophe Goebel, Camille Delaunay, Astrid Pinzano, Laurent Grossin, Christel Cournil-Henrionnet, Pierre Gillet, Patrick Netter, Jean-Yves Jouzeau, David Moulin

### ► To cite this version:

Joseph Paquet, Jean-Christophe Goebel, Camille Delaunay, Astrid Pinzano, Laurent Grossin, et al.. Cytokines profiling by multiplex analysis in experimental arthritis: which pathophysiological relevance for articular versus systemic mediators? . Arthritis Research and Therapy, 2012, 14 (2), pp.R60. 10.1186/ar3774 . hal-01715286

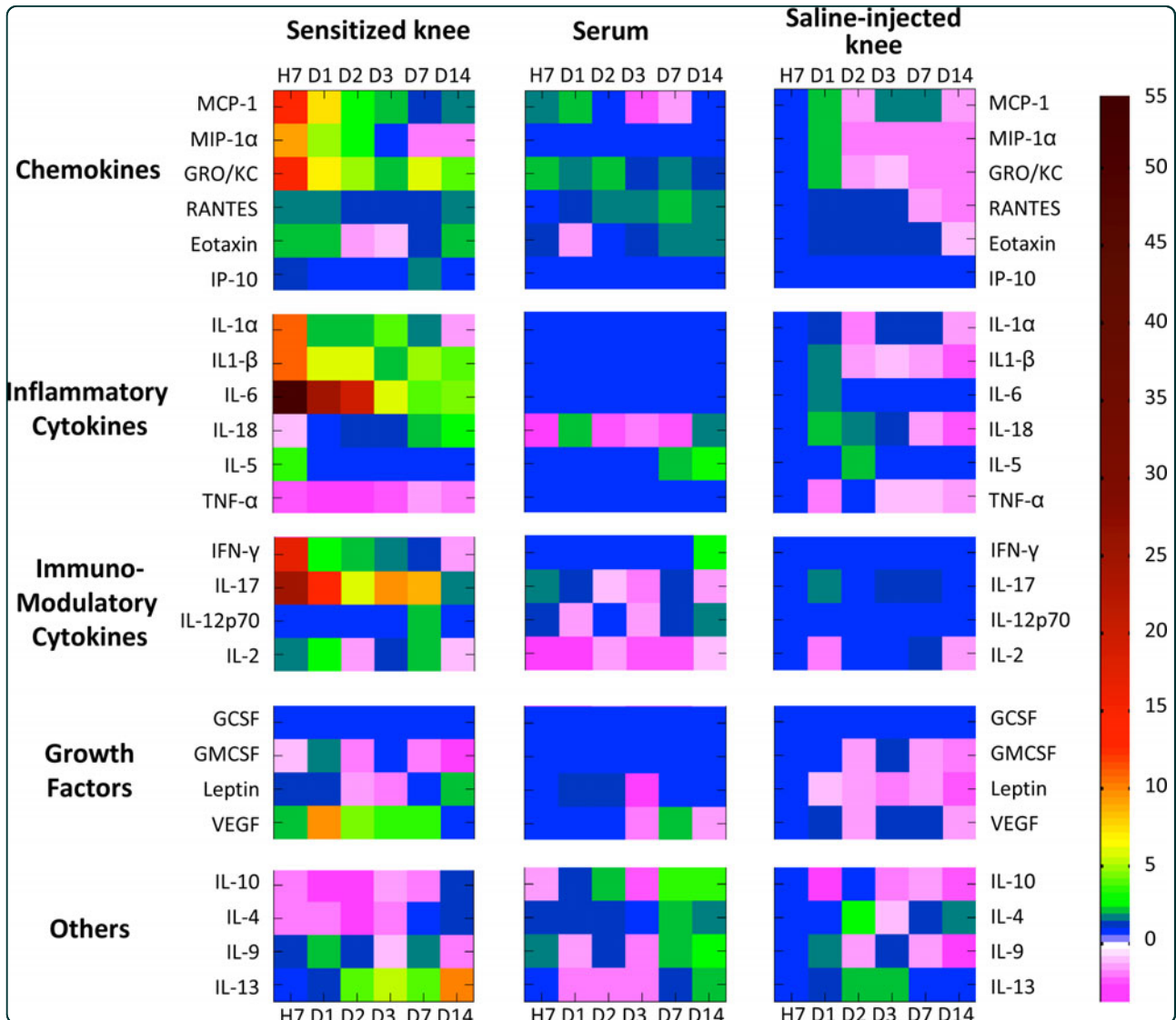
**HAL Id: hal-01715286**

**<https://hal.science/hal-01715286>**

Submitted on 22 Feb 2018

**HAL** is a multi-disciplinary open access archive for the deposit and dissemination of scientific research documents, whether they are published or not. The documents may come from teaching and research institutions in France or abroad, or from public or private research centers.

L'archive ouverte pluridisciplinaire **HAL**, est destinée au dépôt et à la diffusion de documents scientifiques de niveau recherche, publiés ou non, émanant des établissements d'enseignement et de recherche français ou étrangers, des laboratoires publics ou privés.



Cytokines profiling by multiplex analysis in experimental arthritis: which pathophysiological relevance for articular versus systemic mediators?

Paquet *et al.*

RESEARCH ARTICLE

Open Access

# Cytokines profiling by multiplex analysis in experimental arthritis: which pathophysiological relevance for articular versus systemic mediators?

Joseph Paquet<sup>1</sup>, Jean-Christophe Goebel<sup>1</sup>, Camille Delaunay<sup>2</sup>, Astrid Pinzano<sup>1</sup>, Laurent Grossin<sup>1</sup>, Christel Cournil-Henrionnet<sup>1</sup>, Pierre Gillet<sup>1</sup>, Patrick Netter<sup>1</sup>, Jean-Yves Jouzeau<sup>1</sup> and David Moulin<sup>1\*</sup>

## Abstract

**Introduction:** We have taken advantage of the large screening capacity of a multiplex immunoassay to better define the respective contribution of articular *versus* systemic cytokines in experimental arthritis.

**Methods:** We performed a follow up (from 7 hours to 14 days) multiplex analysis of 24 cytokines in synovial fluid and sera of rats developing Antigen-Induced Arthritis (AIA) and confronted their protein level changes with molecular, biochemical, histological and clinical events occurring in the course of the disease.

**Results:** The time-scheduled findings in arthritic joints correlated with time-dependent changes of cytokine amounts in joint effusions but not with their blood levels. From seven hours after sensitization, high levels of chemokines (MCP-1, MIP1 $\alpha$ , GRO/KC, RANTES, eotaxin) were found in synovial fluid of arthritic knees whereas perivascular infiltration occurred in the synovium; local release of inflammatory cytokines (IFN $\gamma$ , IL-1 $\beta$ , IL-6) preceded the spreading of inflammation and resulted in progressive degradation of cartilage and bone. Finally a local overexpression of several cytokines/adipocytokines poorly described in arthritis (IL-13, IL-18, leptin) was observed.

**Conclusions:** Distinct panels of cytokines were found in arthritic fluid during AIA, and the expected effect of mediators correlated well with changes occurring in joint tissues. Moreover, multiplex analysis could be helpful to identify new pathogenic mediators and to elucidate the mechanisms supporting the efficacy of putative targeted therapies.

## Introduction

Rheumatoid arthritis (RA) is a chronic inflammatory autoimmune disorder [1] characterized by infiltration of neutrophils and lymphocytes into the synovial tissue and joint fluid [2,3], leading to secondary cartilage and bone destruction [4]. Several mediators, including proinflammatory and immunomodulatory cytokines, growth factors, and chemotactic cytokines (chemokines), have been implicated in the inflammatory process of RA. Although the cytokine network suggests that mediators can be categorized depending on their primary or secondary role in the disease process [5], questions about the fine tuning of cytokine expression during autoimmune

arthritis remain. Cytokines such as interleukin-1-beta (IL-1 $\beta$ ), tumor necrosis factor-alpha (TNF- $\alpha$ ), and interleukin-6 (IL-6) [6,7] have been shown to display potent proinflammatory actions and to contribute to the pathogenesis of RA [8] or experimental arthritis, particularly to cartilage and bone damages [9]. Thus, targeted therapies against these cytokines were shown to be relevant in murine and rat models of RA [10,11] before being shown to be efficient therapies in the clinics [12]. Anti-TNF $\alpha$  therapies are now widely used [13] and their clinical benefits are well recognized despite an increased risk of infectious disease such as tuberculosis [14]. However, regardless of the therapy used, some patients treated with anticytokine biotherapies remain refractory or become non-responders to the treatment. Therefore, there is a need to use combined therapies or to search for new

\* Correspondence: moulin@medecine.uhp-nancy.fr

<sup>1</sup>Physiopathologie, Pharmacologie et Ingénierie Articulaire - PPIA-UMR 7561 CNRS UHP, Université de Lorraine, Faculté de Médecine, BP 184, 54505 Vandoeuvre Les Nancy, France

Full list of author information is available at the end of the article

therapeutic strategy aiming to control additional mediators or both [15].

Antigen-induced arthritis (AIA), a severe monoarticular chronic arthritis induced by intra-articular administration of methylated bovine serum albumin (mBSA) in sensitized animals, is an immune-mediated joint inflammation reproducing some histopathological findings of RA, such as infiltration of the synovial membrane by CD4<sup>+</sup> T cells and macrophages and a disease course with discernable phases [16,17]. The kinetics and pathogenic roles of cytokines and chemokines have not been extensively investigated in AIA, and analysis of their local expression could help to elucidate the mechanisms supporting arthritis [18]. Earlier studies of the expression of mediators in this model were carried out on joint homogenates [19,20] mainly because the available amounts of tissue samples were too small to allow an extensive analysis. In addition, these data considered the mRNA levels mainly and were not able to distinguish mature cytokines from their precursors, thus overestimating the amount of several active mediators with a possible pathogenic role. When studies focused on the cytokine levels in joint fluid of arthritic rodents, a limited number of mediators were addressed [19,21] or assays were restricted to cytokines, such as TNF- $\alpha$ , IL-1 $\beta$ , or IL-6, that have a well-known pathogenic role [22].

In the present study, we investigated the kinetics of 24 cytokines in rats developing AIA using a multiplex immunoassay that allowed a highly sensitive biological follow-up of multiple mediators from a limited amount of biological sample [15]. Levels of mediators were checked concomitantly in the knee joint - that is, the synovial fluid (SF) - and the bloodstream to establish the sequence and display of cytokine activation in RA-like conditions and to correlate the time-dependent changes of mediators with clinical and histological hallmarks of arthritis. We observed induction of IL-1 $\beta$ , IL-6 and IL-17, cytokines already described as key players in the arthritis process and clinically used as therapeutic targets. Interestingly, we also found expression of mediators that, to date, have no known involvement in this pathology. Indeed, the chemokines eotaxin and growth-related oncogene/keratinocyte chemoattractant (GRO/KC) and the T helper 2 (Th2)-associated cytokines IL-13 and IL-9 were highly induced in arthritic SFs and represent new potential targets for RA treatment.

## Materials and methods

### Animals

All experiments were carried out in barrier-maintained male Wistar Han rats (150 to 175 g on day 0, or D<sub>0</sub>) purchased from Charles River Laboratories (L'Arbresle, France). Animals were allowed to acclimatize for at least 1 week after their arrival in our facility. Animals were

housed in groups of five in solid-bottomed plastic cages with access to tap water and standard rodent pelleted chow (A04; Scientific Animal Food & Engineering, Ville-moisson-sur-orger, France) *ad libitum*. Room temperature was set at 23  $\pm$  1°C, and animals were subjected to a 12-hour light cycle (with lights on from 6 a.m. to 6 p.m.). All experiments were performed in accordance with national animal care guidelines and were preapproved by a local ethics committee. Arthritis induction, blood sampling, and necropsy were performed under general anesthesia by using volatile anesthetics (AErrane™; Baxter SA, Maurepas, France).

### Induction of antigen arthritis

Animals were immunized 21 and 14 days before the antigenic challenge by a subcutaneous flank injection of 250  $\mu$ L of a suspension, which contained 0.5 g of methylated bovine serum albumin (mBSA) (Sigma-Aldrich, Deisenhofen, Germany) and which was resuspended in 125  $\mu$ L of saline and emulsified with 125  $\mu$ L of complete Freund's adjuvant (2 mg/mL *Mycobacterium tuberculosis*; Difco Laboratories Inc., now part of Becton Dickinson and Company, Franklin Lakes, NJ, USA). On D<sub>0</sub>, AIA was induced by a single intra-articular injection of 0.5 mg of mBSA (50  $\mu$ L of 10 mg/mL mBSA dissolved in 0.9% NaCl) into the right knee joint; the contralateral knee received 50  $\mu$ L of 0.9% NaCl. Control rats were immunized with the same protocol but received an intra-articular injection of 50  $\mu$ L of 0.9% NaCl in both knees on D<sub>0</sub>.

### Scoring of arthritis

The disease course was monitored by the repeated assessment of knee joint width by using a caliper (Kroepplin Längenmesstechnik, Schlüchtern, Germany). Raw data were used to estimate joint circumference by using the geometric formula of ellipse circumference,  $2\pi X$  to the power of  $\sqrt{(a^2 + B^2)}$ , in which  $a$  is knee height and  $B$  is knee breadth. The results were representative of joint swelling and expressed (in millimeters) as the difference between the joint size at a given day compared with that measured just before arthritis induction (D<sub>0</sub>).

### Weight-bearing assessment protocol

Hind-limb weight bearing was determined by using an incapacitation tester (Linton Instrumentation, Norfolk, UK) consisting of a dual-channel weight averager. Weight distribution was measured between sensitized (intra-articular injection of mBSA) and contralateral (saline-injected) hind limbs and was used as an index of joint discomfort in the arthritic knee. Rats were placed carefully in an angled Plexiglas chamber positioned so that each hind-paw rested on a separate force plate. Care was taken to ensure that the weight of the animal was directed onto the

force plates and not dissipated through the walls of the chamber. The force exerted by each hind limb (measured in grams) was averaged over a 5-second period. Each data point is the mean of three readings. The percentage of weight distributed onto the sensitized (arthritic) hind limb was calculated by the following equation: [weight on ipsilateral hind limb/(weight on ipsilateral + weight on contralateral)] × 100 [23]. The weight-bearing distribution of arthritic rats was compared with that of control rats (injected bilaterally with saline into the knee joints).

### Histological examination

Knee joints were collected at necropsy, fixed immediately for 24 hours in 4% paraformaldehyde, decalcified in rapid bone decalcifier (RDO; Apex Engineering, Plainfield, IL, USA) for 6 hours at room temperature, and further fixed in 4% paraformaldehyde before embedding in paraffin. Sections (5 µm thick) were rehydrated in a graded ethanol series and stained with either hematoxylin/eosin/safran, safranin O-fast green, or May-Grünwald Giemsa. The histological characteristics of articular cartilage, bone, and peri-articular soft tissues were scored independently by two observers who were blind to the samples. Cartilage degradation was graded from 0 to 3, where 0 = fully stained cartilage, 1 = loss of proteoglycan staining in the superficial layer, 2 = complete loss of proteoglycan staining, and 3 = complete loss of cartilage. The following morphological criteria were used for bone erosion: 0 = normal, 1 = mild loss of cortical bone at few sites, 2 = moderate loss of cortical and trabecular bone, and 3 = marked loss of bone at many sites. Synovium from the knee joint was graded by using a scoring technique adapted from Rooney and colleagues [24]. Briefly, samples were evaluated on a scale from 0 to 4 (0 = normal and 4 = major changes) for hyperplasia of synovial fibroblasts (depth of lining layer), fibrosis (percentage of replacement of loose connective tissue), angiogenesis (number of proliferating blood vessels), perivascular infiltrates of lymphocytes (percentage of vessels surrounded by lymphocytes), and tissue infiltration by lymphocytes (size of aggregates and percentage of infiltrating cells).

### Assessment of cytokine expression

#### Biological fluid sampling

Blood (300 µL) was collected by sampling of the tail veins at seven time points: D<sub>0</sub>, 7 hours (H<sub>7</sub>), D<sub>1</sub>, D<sub>2</sub>, D<sub>3</sub>, D<sub>7</sub>, and D<sub>14</sub>. As we observed no significant difference between cytokine pattern measured in plasma versus serum samples in a preliminary set of experiments (not presented in this paper), we opted for cytokine analysis in serum as this method is widely accepted in cytokine pattern determination in the context of diagnosis or prognosis of RA or both [25,26]. After clotting for 1 hour at room temperature, samples were centrifuged for

10 minutes at 3,000g at room temperature. Obviously hemolyzed samples were discarded as they resulted in a high aggregation of beads. Serum was collected and frozen at -80°C until analysis.

Joint fluid sampling was carried out after killing of animals at corresponding times. Briefly, the patellar ligament was cut and the articular cavity was incised perpendicularly to the patella. The SF was then collected by impregnation of standardized small pieces (4 mm<sup>2</sup>) of filter paper (Schleicher & Schuell GmbH, Dassel, Germany). This technique was chosen because of the inability to aspirate joint fluid from rodent joints, especially saline-injected knees. The saturation of filter pieces with SF allows the circumvention of the variation in a sample volume and was applied successfully to the monitoring of nitric oxide release in rat arthritis [27]. To prevent any proteolytic cleavage of cytokines in arthritic fluids, these paper pieces were left for 12 hours at 4°C in 150 µL of PBS containing a cocktail of protease inhibitors (Complete Mini™; Roche, Basel, Switzerland, Roche reference number 11 836 153 001, one tablet for 10 mL). After initial and final agitations for 30 seconds on a mechanic stirrer, the 'joint-derived' eluates (referred to as SF) were frozen at -80°C until processing. Samples were assessed with a hemoglobin detection reagent strip to exclude any blood contamination. Briefly, 10 µL of diluted samples (1/10 in PBS) was dropped on a Hemastix® reagent strip (limit of detection of 0.015 to 0.062 mg/dL, which is approximately equivalent to 5 to 20 red blood cells per microliter). Positive samples were excluded from multiplex analysis.

#### Multiplex immunoassay

Levels of 24 cytokines - IL-1α, IL-1β, IL-2, IL-4, IL-5, IL-6, IL-9, IL-10, IL-12p(70), IL-13, IL-17, IL-18, leptin, GRO/KC, TNFα, interferon gamma (IFNγ), GM-CSF, RANTES, MCP-1, macrophage inflammatory protein-1-alpha (MIP-1α), G-CSF, IP-10, eotaxin, and VEGF - were determined in both SF (sensitized and contralateral) and serum at each time point by means of a Milliplex™ MAP kit (Millipore, Billerica, MA, USA). Millipore multiscreen 96-well filter plates for multiplex cytokine kits were used. Rat cytokine standards were diluted in a 'serum matrix' solution (optimized protein concentration) for serum sample determination and in PBS for SF measurements. For each time point, data were obtained from five rats. Each animal sample was run in triplicate in accordance with the protocol of the manufacturer [15], and the final results presented here are representative of three independent experiments. Data were collected by using Luminex-100 software version 1.7 (Luminex, Austin, TX, USA), and analysis was performed with the MasterPlex QT 1.0 system (MiraiBio, Alameda, CA, USA). A five-parameter regression formula was used to calculate the

sample concentrations from the standard curves. Data were analyzed by using either 5- or 4-parameter logistic or spline curve-fitting method as recommended by the manufacturer. Type of curve-fitting method was chosen for each cytokine with respect to the lowest residual variance (< 5%).

#### mRNA levels of selected mediators in synovium

##### *Tissue sampling and preparation*

Articular synovium, cartilage of patella were collected aseptically at necropsy and immediately frozen. Frozen tissues, kept at  $-80^{\circ}\text{C}$  before extraction, were homogenized immediately after thawing by using a dispersing system and mixed with 350  $\mu\text{L}$  of RLT buffer added with  $\beta$ -mercapto-ethanol. Samples were then passed on Qiashredder columns (RNeasy kit; Qiagen, Courtaboeuf, France), and mRNAs were extracted with the RNeasy kit in accordance with manufacturer recommendations.

##### *Real-time reverse transcriptase-polymerase chain reaction*

mRNA (0.5  $\mu\text{g}$ ) of each sample was then reverse-transcribed for 90 minutes at  $37^{\circ}\text{C}$  with 200 U of Moloney murine leukemia virus reverse transcriptase (Invitrogen Corporation, Carlsbad, CA, USA) and oligo(dT) primers (Eurogentec, Liège, Belgium) in accordance with the recommendations of the suppliers. Expressions of MCP-1 (chemokine) and IL-1 $\beta$ , IL-6, and TNF- $\alpha$  (proinflammatory cytokines) and VEGF (growth factor) were quantified by real-time polymerase chain reaction (PCR) with the Lightcycler<sup>®</sup> (Roche) technology and the SYBR green master mix system<sup>®</sup> (Qiagen). After amplification, a melting curve was constructed to determine the melting temperature of each PCR product. The mRNA levels of each gene of interest and of the ribosomal protein S29, chosen as a housekeeping gene, were determined in parallel for each sample. Results are expressed with the delta delta threshold cycle (Ct) method. The gene-specific primer pairs used were as follows: MCP-1, forward 5'-CAGATCTCTC TTCCTCCACCACTAT-3', reverse 5'-GCATTAAGTGCATCTGGCTGAGACAGC-3'; IL-1 $\beta$ , forward 5'-CTTCCCCAGGACATGCTAGG-3', reverse 5'-CAAAGGCTTCCCCTGGAGAC-3'; IL-6, forward 5'-CCGGAGAGGAGACTTCACAG-3', reverse 5'-ACAGTGCATCATCGCTGTTC-3'; TNF- $\alpha$ , forward 5'-AGCCCTGGTATGAGCCCATGTA-3', reverse 5'-CCGGACTCCGTGATGTTCTAAGT-3'; and VEGF, forward 5'-CACATCTGCAAGTACGTTTCGTTTA-3', reverse 5'-CAGAGCGGAGAAAGCATTGTT-3'.

#### Assessment of proteoglycan metabolism in patellar cartilage

Proteoglycan synthesis was studied by an *ex vivo* incorporation of  $\text{Na}_2^{35}\text{SO}_4$  into patellar cartilage. At necropsy, patellas were collected aseptically, dissected from periarticular tissues, and then pulsed for 3 hours at  $37^{\circ}\text{C}$  in a

5%  $\text{CO}_2$  atmosphere with 0.6  $\mu\text{Ci}/\text{mL}$   $\text{Na}_2^{35}\text{SO}_4$  (Amersham, Les Ulis, France) in RPMI-Hepes 1640 medium supplemented with 2 mM L-glutamine, 100 IU/mL of penicillin, and 100  $\mu\text{g}/\text{mL}$  of streptomycin (Life Technologies, Cergy-Pontoise, France). After five washings in saline, patellas were fixed overnight in 0.5% cetylpyridinium chloride (Sigma-Aldrich, Saint Quentin-Fallavier, France) in 10% (vol/vol) phosphate-buffered formalin and then decalcified in 5% (vol/vol) formic acid for 7 hours at room temperature. Biopsy punches, 2 mm in diameter, were taken from the central part of the patellas before dissolution overnight in Solvable (Packard, Rungis, France).  $^{35}\text{S}$ -proteoglycan content was measured by liquid scintillation counting (Hionic Fluor; Packard), data are expressed as the percentage of variation from healthy controls, and a negative value represents a decrease of proteoglycan synthesis [28].

#### Statistical analysis

All results, except in Figure 2 (fold changes), are expressed as mean  $\pm$  standard error of the mean. All analyses and figure editing were carried out by using GraphPad Prism (release 4; GraphPad Software, Inc., San Diego, CA, USA). The Student *t* test was used to compare a batch with its own control and analysis of variance with *post hoc* Bonferroni when required (that is, with groups of at least three).

## Results

### Clinical features of antigen-induced arthritis

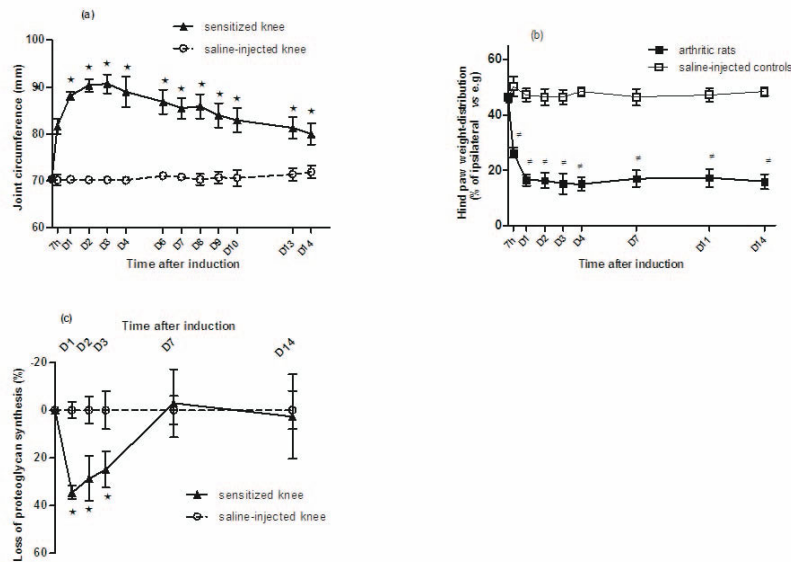
All animals developed signs of arthritis from 7 hours after intra-articular injection of mBSA. A progressive joint swelling was observed in sensitized knees and peaked between D<sub>2</sub> and D<sub>4</sub> and then decreased slowly from D<sub>5</sub> to D<sub>14</sub> (Figure 1a). At the same time, a significant loss in body-weight gain was observed in arthritic rats compared with controls and reached  $20.5\% \pm 3.5\%$  at D<sub>14</sub> (data not shown).

### Hind-limb weight distribution

Rats injected bilaterally with saline distributed their body weight between both hind limbs, as shown by an average weight distribution of  $50\% \pm 4\%$  between the two legs (Figure 1b). In arthritic rats, a shift in weight distribution occurred toward the saline-injected contralateral limb from 7 hours after mBSA injection. A maximal level of incapacitation was observed by D<sub>1</sub> with rats placing only  $16\% \pm 2\%$  of their body weight on the sensitized leg (Figure 1b). Thereafter, joint discomfort remained stable until D<sub>14</sub>.

### Proteoglycan synthesis in patellar cartilage

In arthritic rats, a significant depletion of proteoglycan synthesis was observed from 1 to 3 days after the antigenic challenge (Figure 1c). Proteoglycan loss varied



**Figure 1 Time course of arthritis-related changes in rats with antigen-induced-arthritis. (a)** Joint circumference of rat knees is estimated from joint width (as described in Materials and methods). **(b)** Hind-paw weight distribution of arthritic rats is compared with that of saline-injected controls. Data are expressed as percentage of weight distribution onto the right knee (sensitized with mBSA or saline-injected for control rats). **(c)** Proteoglycan synthesis in patellar cartilage is measured by  $\text{Na}_2^{35}\text{SO}_4$  incorporation. Data are expressed as the percentage of change in  $^{35}\text{S}$  sulfate incorporation in the central part of the patella. Data are mean  $\pm$  standard error of the mean from 28 rats (a,b) or five samples (c). \* $P < 0.05$  sensitized versus saline-injected knee.  $^{\#}P < 0.05$  arthritic versus saline-injected rats. mBSA, methylated bovine serum albumin.

between  $35\% \pm 2\%$  and  $29\% \pm 5\%$  at these times. At a later time, proteoglycan synthesis returned to a normal level in mBSA-injected knees (Figure 1c).

#### Mediators mRNA expression in joint tissues

To check for the relevance of proteins found in the SF to molecular changes occurring in inflamed synovium, mRNA expression profiles of selected cytokines were

analyzed in synovial membranes of arthritic rats (Table 1). These cytokines were representative of different functional classes: one chemokine (MCP-1), three proinflammatory cytokines (IL-1 $\beta$ , IL-6, and TNF $\alpha$ ), and one growth factor (VEGF). In arthritic synovium, a significant increase in mRNA levels of MCP1, IL-1 $\beta$ , IL-6, TNF $\alpha$ , and VEGF was observed as early as 7 hours after the antigenic challenge, but the time course of gene expression varied with the

**Table 1 Changes in cytokine mRNA level (fold change relative to day 0) in arthritic synovium during antigen-induced arthritis**

Time point	MCP-1		IL-1 $\beta$		TNF- $\alpha$		VEGF		IL-6	
	Sensitized	Saline-injected	Sensitized	Saline-injected	Sensitized	Saline-injected	Sensitized	Saline-injected	Sensitized	Saline-injected
Day 0	1.0 $\pm$ 0.2	1.0 $\pm$ 0.1	1.0 $\pm$ 0.1	1.0 $\pm$ 0.2	1.0 $\pm$ 0.4	1.0 $\pm$ 0.5	1.0 $\pm$ 0.1	1.0 $\pm$ 0.2	1.0 $\pm$ 0.2	1.0 $\pm$ 0.1
7 hours	13.9 <sup>a</sup> $\pm$ 5.4	1.5 $\pm$ 0.6	30.2 <sup>a</sup> $\pm$ 4.7	1.1 $\pm$ 0.2	5.13 <sup>a</sup> $\pm$ 2.4	1.2 $\pm$ 0.5	3.8 <sup>a</sup> $\pm$ 0.5	1.1 $\pm$ 0.2	35.0 <sup>a</sup> $\pm$ 8.5	2.1 $\pm$ 1.0
Day 1	5.9 <sup>a</sup> $\pm$ 1.9	1.1 $\pm$ 0.2	49.6 <sup>a</sup> $\pm$ 29.4	1.0 $\pm$ 0.2	11.7 <sup>a</sup> $\pm$ 5.2	1.1 $\pm$ 0.6	20.0 <sup>a</sup> $\pm$ 12.2	1.1 $\pm$ 0.3	12.2 <sup>a</sup> $\pm$ 2.6	1.2 $\pm$ 0.3
Day 2	6.3 <sup>a</sup> $\pm$ 2.5	1.2 $\pm$ 0.4	23.4 <sup>a</sup> $\pm$ 2.0	1.5 $\pm$ 0.5	0.4 $\pm$ 0.3	1.3 $\pm$ 0.7	3.7 <sup>a</sup> $\pm$ 0.6	1.1 $\pm$ 0.3	157.5 <sup>a</sup> $\pm$ 21.2	1.2 $\pm$ 0.3
Day 3	7.2 <sup>a</sup> $\pm$ 2.7	1.1 $\pm$ 0.2	11.0* $\pm$ 2.7	1.1 $\pm$ 0.2	0.7 $\pm$ 0.5	1.1 $\pm$ 0.6	2.0 $\pm$ 0.4	1.0 $\pm$ 0.2	58.2 <sup>a</sup> $\pm$ 6.4	1.4 $\pm$ 0.6
Day 7	3.3 <sup>a</sup> $\pm$ 0.7	1.0 $\pm$ 0.2	5.9 $\pm$ 2.3	1.1 $\pm$ 0.2	0.3 $\pm$ 0.2	1.2 $\pm$ 0.6	0.7 $\pm$ 0.3	1.0 $\pm$ 0.2	79.7 <sup>a</sup> $\pm$ 42.2	1.1 $\pm$ 0.3
Day 14	3.2 <sup>a</sup> $\pm$ 1.4	1.1 $\pm$ 0.2	2.3 $\pm$ 0.3	1.0 $\pm$ 0.1	0.8 $\pm$ 0.5	1.1 $\pm$ 0.5	0.7 $\pm$ 0.2	1.0 $\pm$ 0.1	28.7 <sup>a</sup> $\pm$ 7.1	1.3 $\pm$ 0.5

Rats were immunized subcutaneously with 0.5 g of methylated bovine serum albumin (mBSA) emulsified with complete Freund's adjuvant 21 and 14 days prior to articular injection (day 0) of 0.5 mg of mBSA (sensitized) or 50  $\mu\text{L}$  of saline (contralateral) into the knee joints. Expression of mRNA was assessed before (on day 0) and after (at 7 hours and on days 1, 2, 3, 7, and 14) sensitization. Data are expressed as delta delta threshold cycle (Ct) related to the housekeeping gene (*RP29*). Values are the mean  $\pm$  standard error of the mean of five independent measurements per time. <sup>a</sup> $P < 0.05$  in comparison with day 0. IL, interleukin; MCP-1, monocyte chemoattractant protein-1; TNF- $\alpha$ , tumor necrosis factor-alpha; VEGF, vascular endothelial cell growth factor.

mediator. MCP-1 mRNA level peaked (around 14-fold) at 7 hours and decreased quickly between D<sub>1</sub> and D<sub>3</sub> and then slowly until D<sub>14</sub>. IL-1 $\beta$ , TNF $\alpha$ , and VEGF displayed a comparable profile with a maximal induction by D<sub>1</sub> (50-, 12-, and 20-fold increase, respectively) and a return to normal level from D<sub>2</sub> for TNF $\alpha$  and after D<sub>3</sub> for the others. In contrast, IL-6 mRNA level peaked by D<sub>2</sub> (around 158-fold) and remained significantly elevated until D<sub>14</sub> (29-fold increase). None of the mediators displayed any significant change in mRNA level in the synovium of the saline-injected (contralateral) knee.

#### Overall pattern of mediator levels in biological fluids

As shown in Figure 2, the global analysis of arthritis-induced changes in cytokine amounts were more marked in SF than in the bloodstream, regardless of the functional class considered. Mediators displayed two main profiles of variation in arthritic joints, and cytokines showed either an early and transient increase or a delayed and sustained increase in their synovial contents. In general, cytokine amounts increased earlier and more importantly in arthritic knees than in contralateral saline-injected knees, although some mediators, such as IP-10, IL-12p70, TNF $\alpha$ , or IL-5, failed to be affected significantly by the arthritic process. A similar lack of change was noted for the growth factors G-CSF and GM-CSF in all biological fluids, whereas a marginal decrease of IL-4 and IL-10 levels was observed.

#### Cytokines with an early release in arthritic fluid

The amounts of the chemokines MIP-1 $\alpha$ , MCP-1, GRO/KC, eotaxin, and RANTES increased by 9-, 14-, 14-, 2-, and 2-fold, respectively, in the SF of arthritic rats within 7 hours after the antigenic challenge (Figure 2). No significant changes were observed in the SF of the contralateral knee. In sera, GRO/KC, MCP-1, and RANTES levels were also increased, although the range of induction remained limited (2.7-, 2-, and 1.8-fold, respectively) since these chemokines displayed a high circulating level under basal conditions (Figure 3a,b,c). The intra-articular peaks of mediator averaged 60 pg/knee for MCP-1 (Figure 3a), 45 pg/knee for GRO/KC (Figure 3b), 15 pg/knee for RANTES (Figure 3c), and 5 pg/knee for eotaxin (Figure 3d). These chemokines returned to basal levels in arthritic fluids and sera within D<sub>3</sub>, but a secondary flare of RANTES release (2-fold change) was observed on D<sub>14</sub>.

The immunomodulatory cytokines IL-17 and IFN $\gamma$  increased by 25- and 21-fold, respectively, in the SF of arthritic rats within 7 hours after the antigenic challenge (Figure 4a,c). However, both cytokines displayed a different time course since IFN $\gamma$  returned to basal levels from D<sub>1</sub> after mBSA injection, whereas IL-17 levels declined gradually until D<sub>14</sub>. No changes in cytokine amounts

were observed in the joint fluid from saline-injected knees or in sera. IL-2 and IL-9 contents increased less rapidly than IL-17 and IFN $\gamma$  in the arthritic knee (2- to 2.5-fold induction by D<sub>1</sub>) and showed a secondary but non-significant increase by D<sub>7</sub> (Figure 4b,d).

#### Cytokines with a sustained or a late release in arthritic fluid

As early as 7 hours after arthritis induction, the amounts of the proinflammatory cytokines IL-1 $\beta$  and IL-6 increased by 12- and 55-fold, respectively, in the SF of sensitized joints (Figure 5a,c). However, IL-1 isoforms displayed a distinct pattern of evolution since IL-1 $\beta$  levels remained significantly elevated in arthritic joints until D<sub>14</sub> (Figure 5a) whereas IL-1 $\alpha$  declined progressively (Figure 2). The intra-articular peaks of mediators averaged 150 pg/knee for IL-6 and 45 pg/knee for IL-1 $\beta$  (Figure 5a,c), but no significant variation was noted in corresponding sera. In arthritic fluid, the level of IL-18 and IL-13 increased only from D<sub>2</sub> and D<sub>7</sub> (2-fold increase) until D<sub>14</sub> (3- and 4-fold increases), respectively (Figure 5b,d). However, an unexpected 2.2-fold increase in IL-18 level was observed in the contralateral knee from D<sub>1</sub> to D<sub>2</sub> after the antigenic challenge (Figure 5b). Such variation was consistent with the transient release of IL-18 into the bloodstream by D<sub>1</sub>.

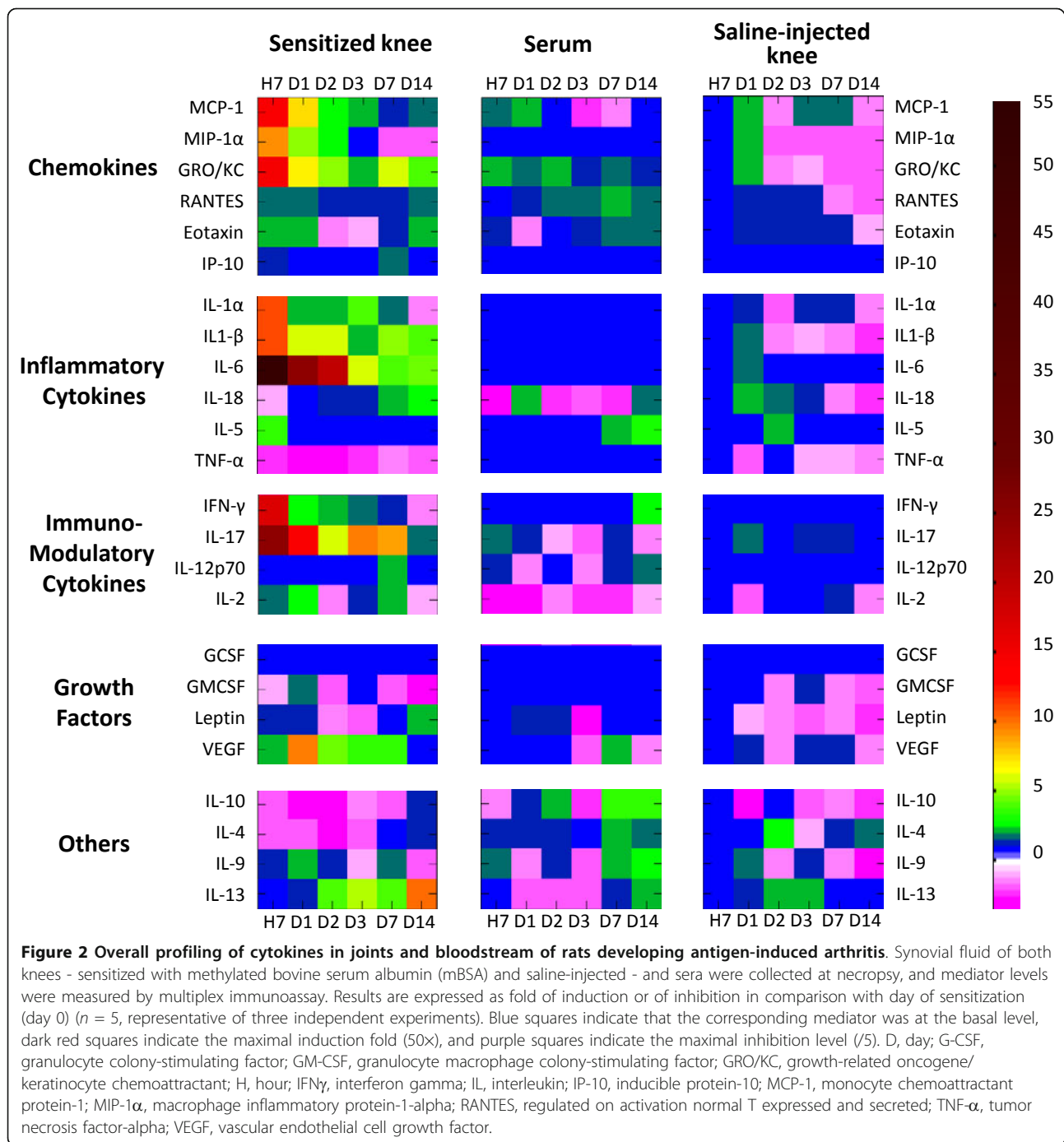
#### Expression profile of selected growth factors

A delayed and sustained release of VEGF was observed in the sensitized knees, and a 10-fold increase by D<sub>1</sub> was followed by a progressive lessening until D<sub>14</sub> (Figure 2). Despite its high circulating levels, leptin showed an inverse evolution profile in arthritic SF but was significantly increased by D<sub>14</sub> in comparison with contralateral knees.

#### Histological examination

As early as 7 hours after arthritis induction, synovium was infiltrated by migrating cells, especially in the perivascular areas of the sensitized knees (Table 2). A more dedicated staining (May-Grünwald Giemsa) of blood cells indicated infiltration by eosinophils in the knee as early as 7 hours after arthritis induction (Figure 6). Interestingly, though maximal at the earliest time point, the perivascular infiltration paralleled the time course of the diffuse infiltration of the tissue with a progressive lessening until D<sub>14</sub>. The only exception was the transient infiltration that was detected around the blood vessels before D<sub>2</sub> in the contralateral knees (Table 2). No other histological finding was detected in contralateral knees throughout disease duration. In sensitized knees, the additional pathological changes were a progressive thickening of the synovial cell layer from D<sub>1</sub> to D<sub>14</sub> and an overall tissue

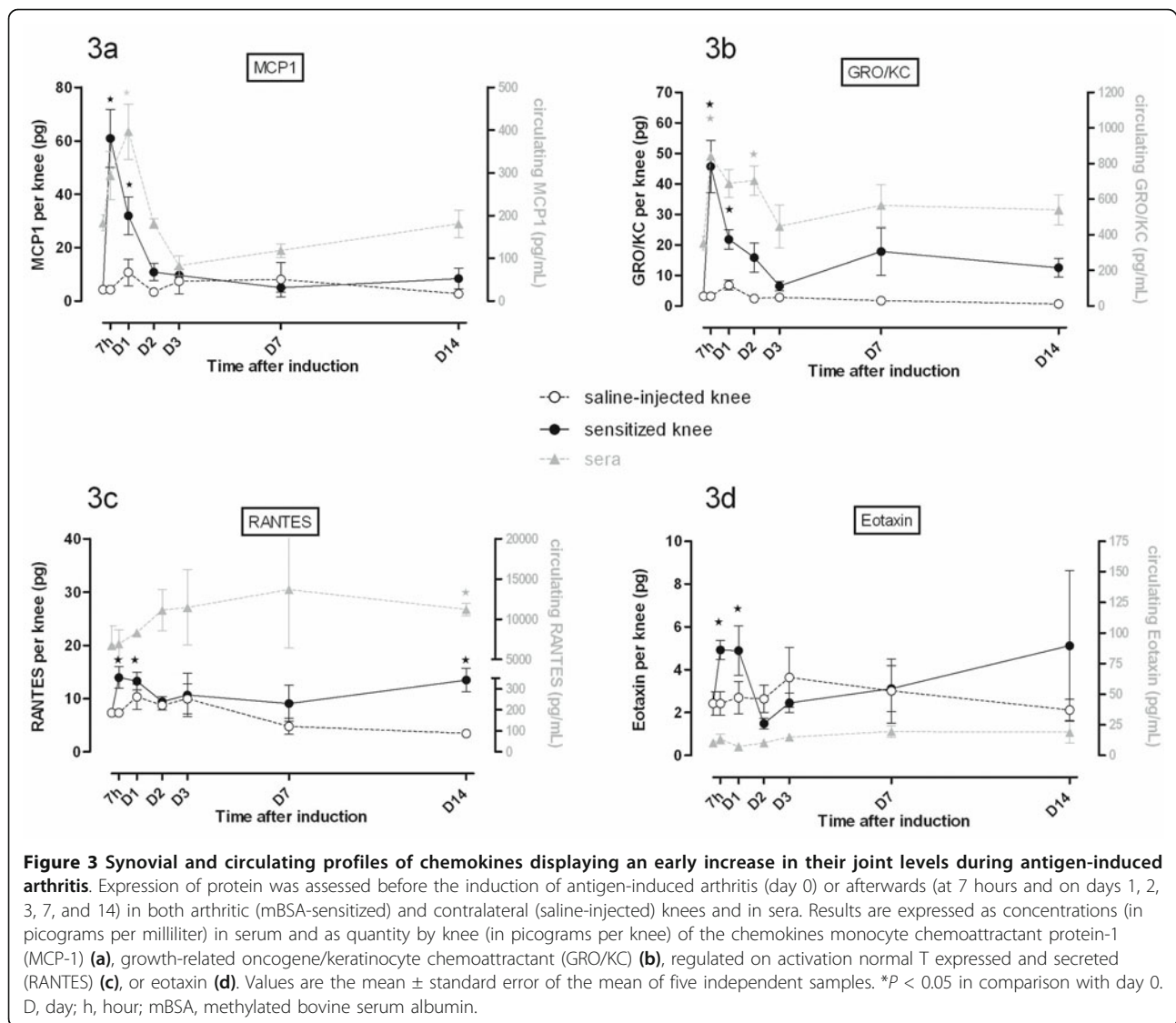




fibrosis. Interestingly, new blood vessel formation occurred at a later time point (D<sub>3</sub> to D<sub>7</sub>) in the inflamed rat synovium. The scoring of cartilage lesions after safranin O staining (Figure 7a) revealed a progressive loss of proteoglycan in the sensitized knees (Figure 7c,d) and the loss became significant from D<sub>2</sub> to D<sub>14</sub>. A concomitant bone loss was observed (Figure 7b,d) in comparison with saline-injected knees (Figure 7b,c).

### Discussion

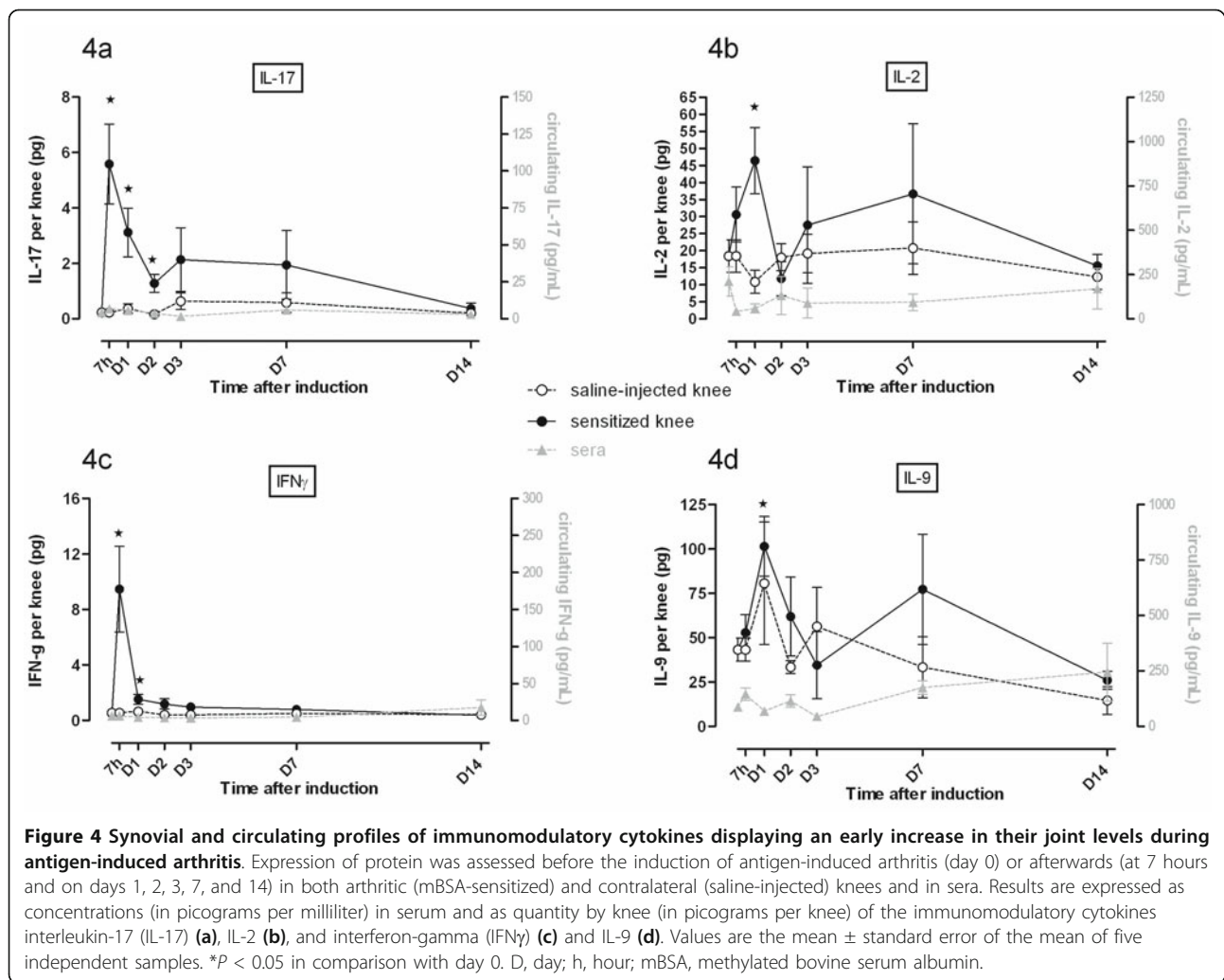
The major aim of the present study was to analyze the relevance of cytokine profiling to the pathophysiology of experimental arthritis by combining the originality of a sampling method of SF in rodents and the screening capacity of a multiplex-based system. Indeed, despite the classical use of the AIA model, the kinetics of mRNA and mediator expression in arthritic joints remain



poorly characterized, whereas very few face-off studies have been carried out between articular and circulating mediator levels.

During the course of AIA, we confirmed that joint swelling occurred early and peaked by D<sub>2</sub>, when the incapacitation of the animal became maximal. Articular incapacitation is assumed to result from the altered nociception following injection of an inflammatory trigger into the joints [29]. Although there can be some differences between the use of zymosan, carrageenan, or LPS as arthritis inducers, knee joint incapacitation is generally thought to be supported by the release of bradykinin, nitric oxide, eicosanoids, and/or proinflammatory cytokines [30]. We describe - to our knowledge, for the first time - a long-lasting joint incapacitation after a local antigenic challenge. The best correlation with the fast occurrence of abnormal weight bearing until D<sub>2</sub> was found with

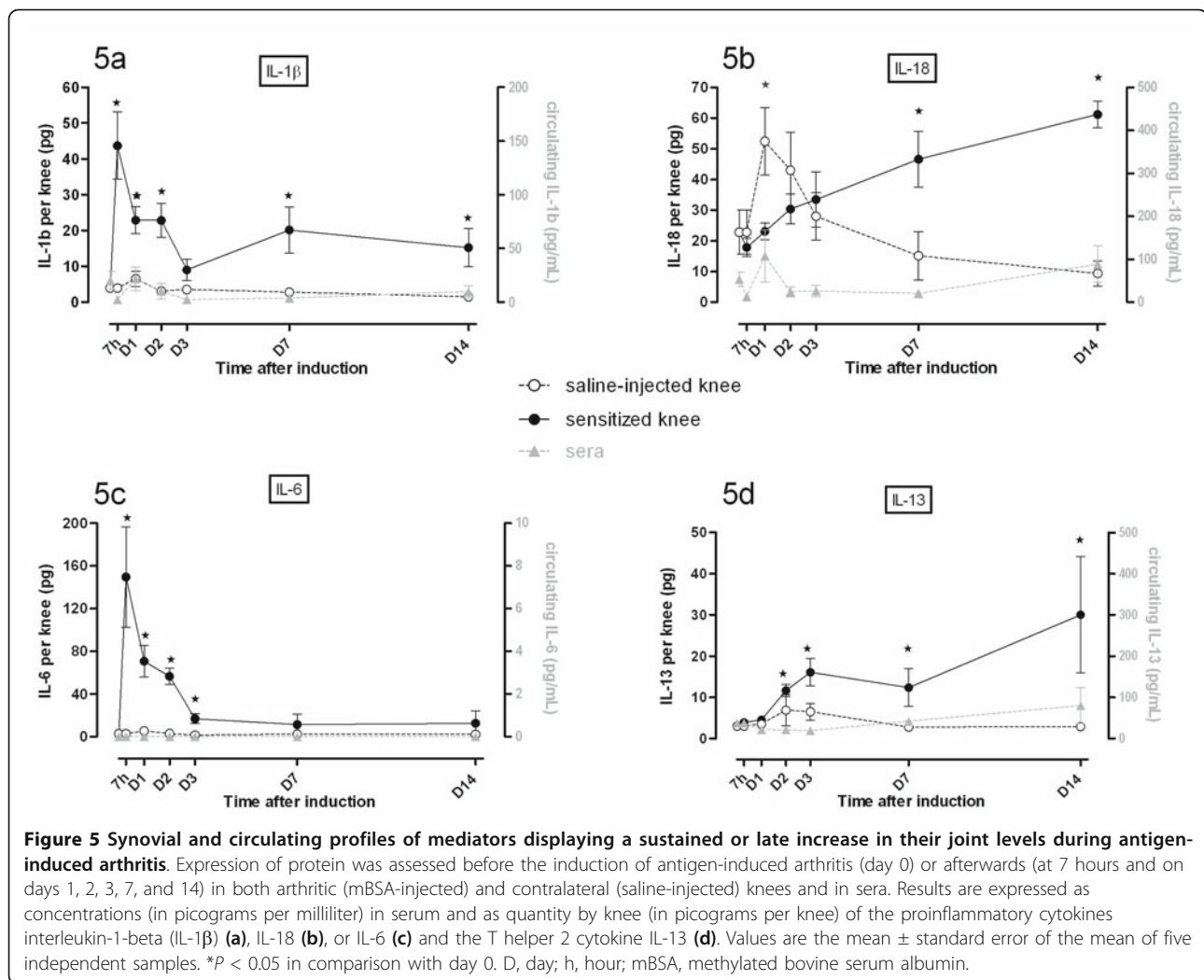
IL-2 ( $r_s = 1$ ) over VEGF, although the early peak release of the chemokines MCP-1, MIP-1 $\alpha$ , and GRO/KC and the proinflammatory cytokines IL-1 $\alpha$  or - $\beta$ , IL-17, or IFN $\gamma$  may have contributed to the initiation of incapacitation. Nevertheless, at later time points, joint swelling lessened progressively whereas abnormal weight bearing remained at the same level, suggesting that pain persisted despite the partial resolution of inflammation, likely as a result of severe joint tissue remodeling. Because of its prominently local character, AIA allows the analysis of cytokine patterns in a locally driven immune response. We showed that arthritis was characterized by an early transcriptional activation of the chemokine MCP-1, the proinflammatory cytokines IL-1 $\beta$ , IL-6, and TNF $\alpha$ , and the angiogenic factor VEGF in synovial tissue. For most cytokines, this early induction of mRNA expression in the inflamed joint was consistent with the early release of corresponding proteins



in the arthritic fluid. However, the transcriptional regulation cannot be considered the unique mechanism responsible for increased cytokine levels in physiological fluid, since the release of proteins, notably chemokines, appeared as early as 7 hours, suggesting the existence of pools of mRNA or cytokine precursors (or both) which were prone to be processed. In addition, the extent of cytokine expression was much lower at the mediator than the transcript level, and the release of IL-1 $\beta$  and IL-6 preceded the maximal increase in their mRNA levels, supporting the possible contribution of rate-limiting steps between both processes. One cannot rule out that very early increase in mRNA may have preceded a rapid decline due to mRNA instability or action of miRNA, as has been suggested for IL-1 $\beta$  [31]. A similar observation has been made for IL-6 in the murine air pouch model that resembles the human synovial membrane. Indeed, injection of monosodium urate in the pouch induced IL-6 expression in the first hour after challenge and before a drastic decrease to basal levels between 4 and 9 hours

[32]. Therefore, we cannot rule out a transient and precocious induction of IL-1 $\beta$  and IL-6 mRNA in our experimental conditions.

As a consequence, the contribution of a given mediator to arthritis could be overestimated when extrapolated only from its mRNA level in inflamed joint tissues [20,21]. However, we observed a surprising uncoupling between the early overexpression of TNF $\alpha$  in the inflamed synovium and its stable low amount in the arthritic fluid, despite previous reports of a lack of correlation between mRNA and protein expression [21]. As TNF $\alpha$ -converting enzyme is thought to be activated in rats developing arthritis [33], especially in the early stage of the disease [34], the low joint TNF $\alpha$  levels are unlikely to reflect a defective processing of its mRNA. We suggest that these low levels can reflect either a fast degradation of the cytokine by proteases or the inability of the multiplex immunoassay to recognize TNF $\alpha$  when combined with soluble receptors able to mask protein recognition by bead antibodies. In line with such possible interference, protein arrays



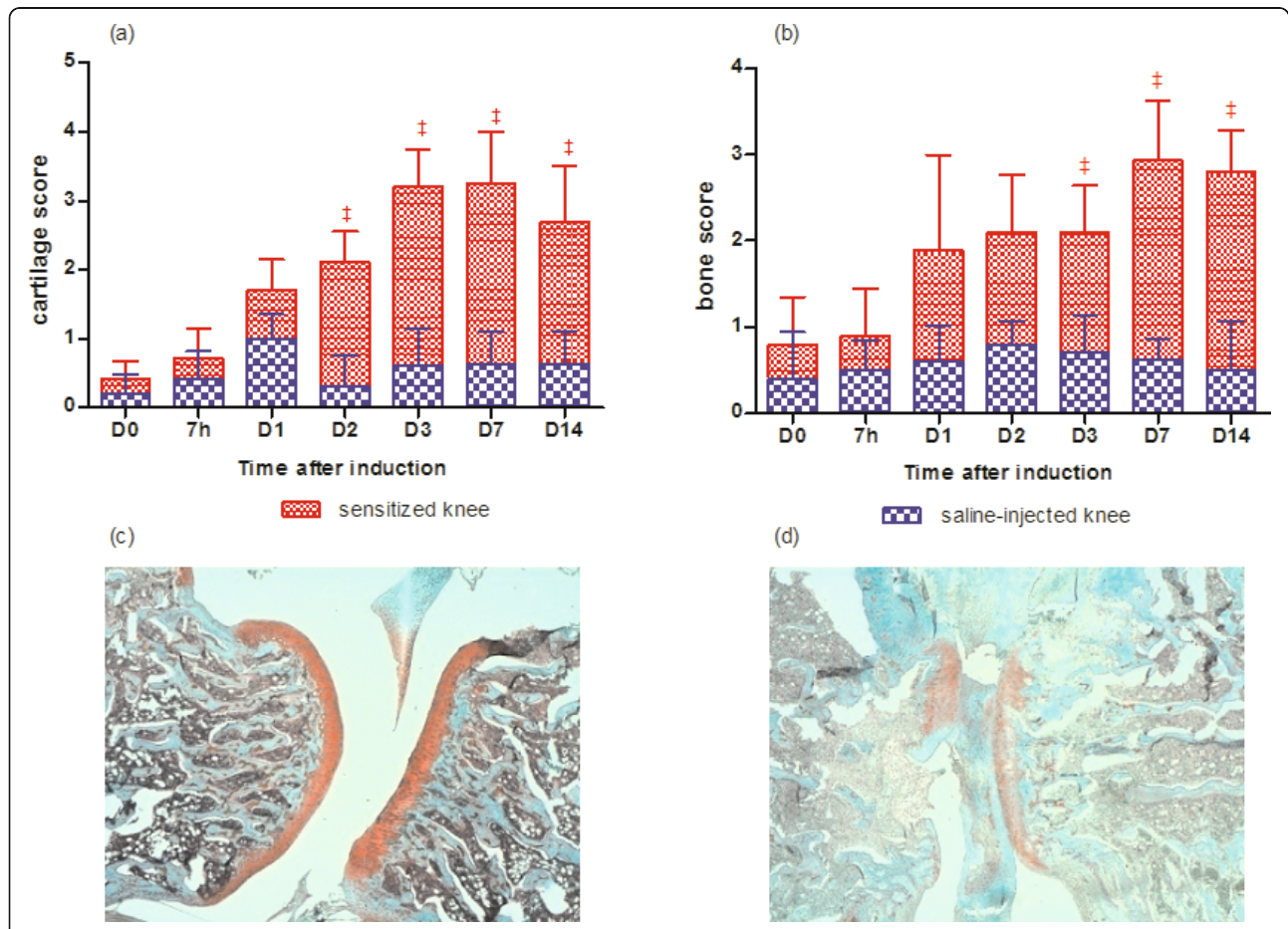
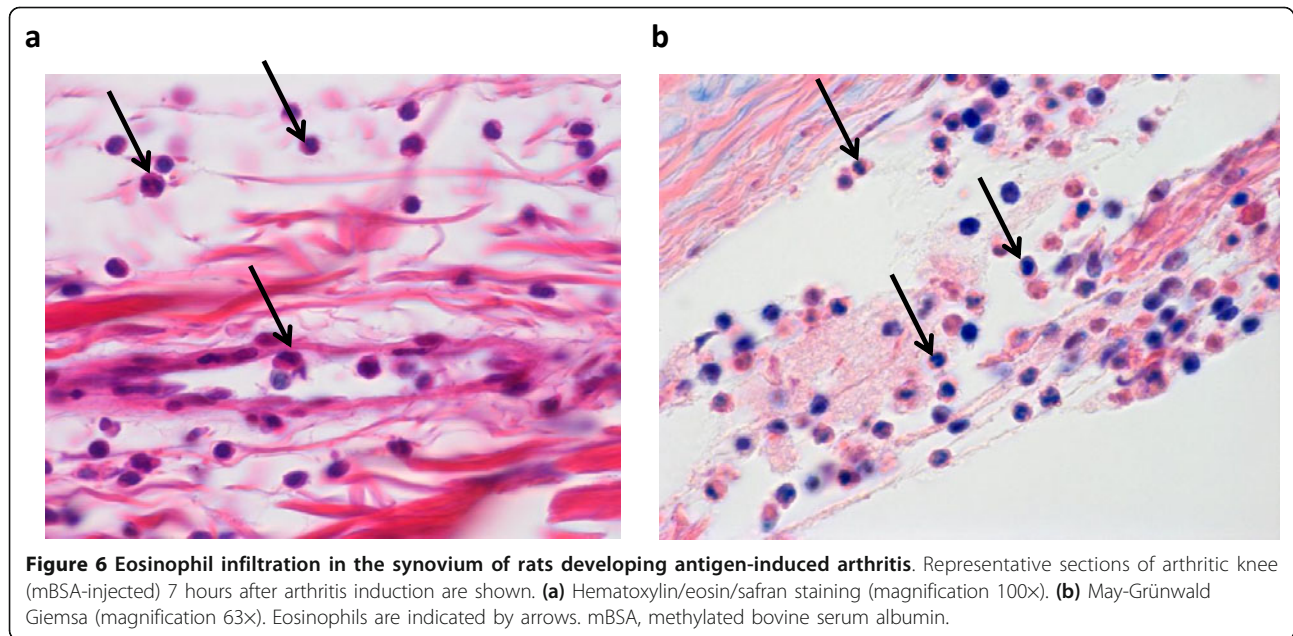
were reported to be unable to detect IL-1 $\alpha$  [35] or TNF $\alpha$  [36] in culture supernatants, despite their use as the cell challenging inflammatory stimulus. In experimental arthritis, a pattern of soluble proteins is much more relevant

than a pattern of transcripts to pathological mechanisms because most cytokines exert their biological effects in an endocrine, paracrine, or juxtacrine way. From a practical point of view, blood sampling is easy to perform and

**Table 2 Histological grading of knee synovium in rats developing antigen-induced arthritis**

Time point	Synovial lining hyperplasia		Fibrosis		Proliferative blood vessels		Diffuse infiltrates		Perivascular infiltrates	
	Sensitized	Saline-injected	Sensitized	Saline-injected	Sensitized	Saline-injected	Sensitized	Saline-injected	Sensitized	Saline-injected
Day 0	0.2 $\pm$ 0.2	0.2 $\pm$ 0.2	0.6 $\pm$ 0.2	0.6 $\pm$ 0.3	0.6 $\pm$ 0.2	0.6 $\pm$ 0.3	0.4 $\pm$ 0.3	0.4 $\pm$ 0.3	0.0 $\pm$ 0.0	0.0 $\pm$ 0.0
7 hours	1.2 $\pm$ 0.4	0.2 $\pm$ 0.2	0.8 $\pm$ 0.4	0.6 $\pm$ 0.3	0.8 $\pm$ 0.2	0.8 $\pm$ 0.2	1.2 <sup>a</sup> $\pm$ 0.2	0.8 $\pm$ 0.4	2.8 <sup>a</sup> $\pm$ 0.6	1.6 <sup>a</sup> $\pm$ 0.6
Day 1	1.6 <sup>a</sup> $\pm$ 0.4	0.8 $\pm$ 0.2	1.6 <sup>a</sup> $\pm$ 0.4	0.6 $\pm$ 0.3	0.6 $\pm$ 0.2	0.4 $\pm$ 0.2	2.2 <sup>a</sup> $\pm$ 0.4	1.0 $\pm$ 0.0	2.0 <sup>a</sup> $\pm$ 0.5	1.8 <sup>a</sup> $\pm$ 0.4
Day 2	2 <sup>a</sup> $\pm$ 0.3	0.2 $\pm$ 0.2	2.4 <sup>a</sup> $\pm$ 0.3	0.6 $\pm$ 0.3	1.0 $\pm$ 0.0	0.6 $\pm$ 0.4	3.4 <sup>a</sup> $\pm$ 0.3	0.4 $\pm$ 0.3	2.6 <sup>a</sup> $\pm$ 0.5	0.4 $\pm$ 0.3
Day 3	3.2 <sup>a</sup> $\pm$ 0.6	0.4 $\pm$ 0.3	2.2 <sup>a</sup> $\pm$ 0.5	0.6 $\pm$ 0.3	1.8 <sup>a</sup> $\pm$ 0.2	0.8 $\pm$ 0.4	3.4 <sup>a</sup> $\pm$ 0.4	0.4 $\pm$ 0.3	2.0 <sup>a</sup> $\pm$ 0.5	0.4 $\pm$ 0.3
Day 7	2.5 <sup>a</sup> $\pm$ 0.7	0.3 $\pm$ 0.3	3.5 <sup>a</sup> $\pm$ 0.3	0.3 $\pm$ 0.3	2.5 <sup>a</sup> $\pm$ 0.5	0.5 $\pm$ 0.3	2.8 <sup>a</sup> $\pm$ 0.6	0.3 $\pm$ 0.4	1.8 <sup>a</sup> $\pm$ 0.5	0.4 $\pm$ 0.4
Day 14	3.3 <sup>a</sup> $\pm$ 0.5	0.0 $\pm$ 0.0	4.0 <sup>a</sup> $\pm$ 0.0	0.3 $\pm$ 0.3	1.8 $\pm$ 0.5	1.0 $\pm$ 0.4	2.0 <sup>a</sup> $\pm$ 0.0	0.3 $\pm$ 0.3	1.8 <sup>a</sup> $\pm$ 0.3	0.8 $\pm$ 0.3

Rats were immunized subcutaneously with 0.5 g of methylated bovine serum albumin (mBSA) emulsified with complete Freund's adjuvant 21 and 14 days prior to articular injection (day 0) of 0.5 mg of mBSA (sensitized) or 50  $\mu$ L of saline (contralateral) into the knee joints. Values are expressed as the mean  $\pm$  standard error of the mean of five rats per time. <sup>a</sup> $P < 0.05$  in comparison with day 0.



**Figure 7 Histological grading of joint lesions in the knee joint of rats developing antigen-induced arthritis.** **(a)** Cartilage score. **(b)** Bone score. Data are expressed as mean  $\pm$  standard error of the mean of five independent samples.  $^{\#}P < 0.05$  in comparison with day 0. Representative sections of contralateral (saline-injected) **(c)** and arthritic (mBSA-injected) **(d)** knees 14 days after arthritis induction (safranin O-fast green staining, magnification 4x). D, day; h, hour; mBSA, methylated bovine serum albumin.

circulating levels of mediators have been shown to predict disease onset in humans [37] or to be indicative of a patient's response to biologics [38,39], especially when taking advantage of a multiplex analysis [15]. Some correlations with disease activity were also reported in RA [40] or experimental arthritis [41]. However, other studies support the view that the local expression of cytokines may be the best predictor of joint damage progression in humans [19] and that blood levels do not necessarily correlate to clinical response in animal models [21]. In addition, a multiplex analysis of SF demonstrated that the follow-up of cytokine pattern allowed patients who had early RA and subsequently developed RA to be distinguished from those who had early RA but did not develop RA [42]. When we performed a comparative kinetic study of mediator levels in serum and SF, we confirmed that the expression pattern was much more informative in joint fluid than in blood [43]. Indeed, serum concentrations showed only little variation during AIA, whereas some correlations were established between cytokine concentrations in arthritic SF and histological or clinical parameters. Such results are consistent with the local and monoarticular nature of AIA [44], rendering the amount of cytokines produced within a single diseased joint prone to be reduced by degradation in the lymphatic system or by dilution into the bloodstream or both [45].

Chemokines were the first mediators to be overexpressed in biological fluids. However, MCP-1, GRO/KC, and RANTES levels increased simultaneously in arthritic SF and serum whereas MIP-1 $\alpha$  and eotaxin were induced only in sensitized knees during the first 24 hours of arthritis. Chemokines play a key role in inflammation by recruiting mononuclear leukocytes and lymphocytes in inflamed knee joints [3,46,47]. Their expression was clearly correlated to perivascular and diffuse infiltrates in the synovial membranes of sensitized knees, in agreement with their chemotactic potential [46]. Eotaxin is a chemokine that is implicated in allergic responses [48] by recruiting eosinophils. Its involvement in arthritic pathologies has not yet been demonstrated [49], but multiplex analysis of plasma of patients with RA showed elevated levels of eotaxin versus healthy controls [37]. Furthermore, the expression profile of eotaxin is very similar to that of RANTES in inflamed SF. Previous studies showed that RANTES played a fundamental role in the trafficking and activation of leukocytes in arthritis establishment [46,50] and that the use of RANTES antagonists could lead to reduced joint inflammation [51,52]. We can speculate that eotaxin could be a potential target in RA treatment. Eotaxin-2 is a potent chemoattractant for eosinophils, basophils, and Th2 lymphocytes. Here, we demonstrated the presence of eosinophils in arthritic joints in the first hours of arthritis development, whereas eosinophils were reported to be absent from the

synovium of patients with late-stage arthritis [53]. But in their observations, Tetlow and Woolley [53] did not exclude the possibility that eosinophils show a transient and rapid infiltration of rheumatoid synovial tissue at earlier stages of disease activity. Furthermore, RA is considered a heterogeneous disease, as treatments targeting different pathogenic pathways such as neutralization of TNF- $\alpha$  or depletion of B cells are not effective in all patients. It is likely that patients with resistant RA may have other types of disease, and one uncommon type of RA is associated with hypereosinophilia, which correlates to arthritis severity [54]. GRO/KC is a CXC chemokine whose pathogenic role is poorly described in arthropathies but displayed an interesting expression profile in the AIA model. MCP-1, RANTES, and MIP-1 $\alpha$  are produced in inflamed knees [46,55,56] and act in the recruitment of phagocytic leukocytes during inflammation. Globally, chemokine induction in SF is positively correlated with joint swelling in the early phase of arthritis and synovium infiltration observed at histological examination.

Proinflammatory cytokines also increased early in SF of arthritic knees. IL-1 $\alpha$  and IL-1 $\beta$  are expressed very precociously and can be linked to the proteoglycan anabolism loss observed in patellar cartilage, and IL-1 $\beta$  has a key role in the regulation of proteoglycan metabolism [11]. Biotherapies targeting IL-1 $\beta$  have already shown their efficacy in inflammation healing [10] by using either antibodies or antagonist receptor (IL-1Ra). Bone remodeling was observed and was correlated to IL-1 $\beta$  [9,22] and IL-6 expression patterns. IL-6 was also expressed early and at very high levels in SF and remained elevated during the course of this model. IL-6 is now considered as one of the most important mediators of the acute-phase response. As previously discussed, we failed to observe any significant modifications of TNF- $\alpha$  level during the course of AIA; nevertheless, its pivotal role in AIA establishment was demonstrated by the efficacy of anti-TNF- $\alpha$  in this model [57]. Previous studies showed a maximum of induction 6 hours after arthritis induction but this measure was performed on synovial membrane homogenates, and consequently the measured TNF- $\alpha$  level addressed both transmembrane and extracellular mediators. IL-1 $\beta$ , IL-6, and TNF $\alpha$  are elevated in human RA synovium and have also been shown to contribute to the development of arthritis in animal models [4,58].

IL-18 belongs to the IL-1 family and is processed like IL-1 $\beta$  by the inflammasome [59] but presented a different expression profile in SF. Surprisingly, we observed an increase in the contralateral knee at 7 hours. Because of the prominently local character of AIA, it is commonly accepted that each rat could be its own control, since only the antigen-injected joint develops inflammation. Nevertheless, this observation points out that the contralateral

knee may favor misinterpretation of the data when considered as the healthy control [57].

In sensitized knees, IL-18 level was progressively increased. IL-18 is thought to play a major role in the chronicity of inflammation in this arthritis model. Recent publications have demonstrated the importance of this cytokine in allergies [60] and arthritic pathologies [10]. Although IL-18 is also known to act synergistically with IL-12, we did not observe correlations between these two cytokines in SF during AIA. IL-18 was also known as an IFN $\gamma$ -stimulating factor [61], but we observed two distinct expression profiles for IFN $\gamma$  and IL-18 in this study. Immunomodulatory cytokines play a major role in RA. Indeed, in this experimental model, we observed that IFN $\gamma$  and IL-2 were expressed in SF, and only in the first hours after sensitization.

Until recently, arthritis was considered a Th1 pathology, but now arthritis is known to be mainly IL-17-dependent [62]. Many studies are actually conducted to target IL-17 in arthritis models [62,63] because of its potential synergistic effects with IL-1 $\beta$ , IL-6, and TNF- $\alpha$  in inducing cytokine expression and joint damage [64]. The expression profile of IL-17 was the same as that of IL-1 $\beta$ , and IL-17 cytokine may also contribute to inhibition of proteoglycan anabolism [65].

In regard to growth factors, VEGF was expressed after 24 hours and the histological analysis revealed an increased number of blood vessels in the synovium after 4 days, consistently with the promotion of neoangiogenesis by this cytokine [66]. Levels of G-CSF and GM-CSF did not show significant variations, and their importance seems limited in this experimental arthritis model, even if their antagonists have shown anti-inflammatory effects in other murine experimental models [67,68]. Sera leptin decreased significantly after 3 days and then returned to its original high level, whereas in SF, an increase was observed after 14 days, indicating the potential role of this adipokine in arthritis chronicity and bone degradation in the long term. There is a consensus about its pivotal role as a proinflammatory, bone metabolism regulating, and immune-modulating agent. Nevertheless, its mechanisms of action have not been fully described [69].

We observed, in SF, a progressive increase in the amount of IL-13, a cytokine usually described in allergic reactions and pulmonary fibrosis [70]. However, the pattern of IL-4 was different from that of IL-13. Although IL-13 and IL-4 are both central Th2 cytokines in the immune system and potent activators of inflammatory responses and fibrosis during Th2 inflammation, recent studies demonstrated that these cytokines exerted a distinct role in asthma pathology [71]. One can suppose that IL-13 rather than IL-4 plays a prominent role in the synovial membrane fibrosis observed here since a positive chronic correlation exists between IL-13 and fibrosis

(Spearman correlation). Another cytokine not described in arthritis but known for its cell proliferation capacities [72], IL-9, was expressed early in sensitized knees. Both cytokines may play a role in synovial hyperplasia, which is a major event in RA. Further studies will be required to confirm this hypothesis.

## Conclusions

The present study is the first kinetic study (from 7 hours to 14 days) of 24 SF cytokines profiled in a complete biochemical, histological, and clinical arthritis model. Previous studies on animal models focused on a restricted number of cytokines [21] and were assessed on synovial extract or joint homogenates (which contain both inactive cytokine precursors and active cytokines) [20]. Using this technology, we observed that SF cytokine amounts are correlated to biochemical, histological, and clinical parameters of arthritis in a timely fashion. Moreover, we established expression patterns of cytokines - besides the mediators known to be involved in arthritis - that are poorly described in articular physiopathology. The analysis provided here may allow the further study of molecular mechanisms involved in the establishment and evolution of autoimmune arthritis, leading to potential new clinical therapies [73].

## Abbreviations

AIA: antigen-induced arthritis; D: day; G-CSF: granulocyte colony-stimulating factor; GM-CSF: granulocyte macrophage colony-stimulating factor; GRO/KC: growth-related oncogene/keratinocyte chemoattractant; IFN $\gamma$ : interferon gamma; IL: interleukin; IP-10: inducible protein-10; mBSA: methylated bovine serum albumin; MCP-1: monocyte chemoattractant protein-1; MIP-1 $\alpha$ : macrophage inflammatory protein-1-alpha; PBS: phosphate-buffered saline; PCR: polymerase chain reaction; RA: rheumatoid arthritis; RANTES: regulated on activation normal T expressed and secreted; SF: synovial fluid; Th: T helper; TNF: tumor necrosis factor; VEGF: vascular endothelial cell growth factor.

## Acknowledgements

The authors thank Corinne Bonnet for her helpful technical assistance in histological staining and Francois Plénat for his expertise in histological analysis. The authors thank Arnaud Bianchi for helpful discussions. This study was supported by grants from the Centre National de la Recherche Scientifique, the Région Lorraine, the Conseil Général de Meurthe et Moselle, the Communauté Urbaine du Grand Nancy, and the Fondation Arthritis Courtin.

## Author details

<sup>1</sup>Physiopathologie, Pharmacologie et Ingénierie Articulaire - PPIA-UMR 7561 CNRS UHP, Université de Lorraine, Faculté de Médecine, BP 184, 54505 Vandoeuvre Les Nancy, France. <sup>2</sup>Anatomie et Cytologie Pathologiques - CHU Nancy Brabois, 54505 Vandoeuvre Les Nancy, France.

## Authors' contributions

JP helped to perform all *in vivo* and molecular studies. DM helped to perform all *in vivo* and molecular studies and to supervise the study design and the manuscript, conceived the study, and participated in its design and final presentation. J-CG and LG helped to perform molecular and histological studies and statistical analysis. AP and CC-H helped to perform molecular and histological studies. CD performed histological analysis. PG, PN helped to supervise the study design. J-YJ helped to supervise the study design and the manuscript and final presentation. All authors read and approved the final manuscript.

### Competing interests

The authors declare that they have no competing interests.

Received: 21 June 2011 Revised: 23 November 2011

Accepted: 13 March 2012 Published: 13 March 2012

### References

- Gorman CL, Cope AP: Immune-mediated pathways in chronic inflammatory arthritis. *Best Pract Res Clin Rheumatol* 2008, **22**:221-238.
- Rabquer BJ, Pakozdi A, Michel JE, Gujar BS, Haines GK, Imhof BA, Koch AE: Junctional adhesion molecule C mediates leukocyte adhesion to rheumatoid arthritis synovium. *Arthritis Rheum* 2008, **58**:3020-3029.
- Pundt N, Peters MA, Wunrau C, Pap T: Gene therapy in rheumatoid arthritis: new aspects [in German]. *Dtsch Med Wochenschr* 2008, **133**:1737-1741.
- Andreas K, Lubke C, Haupt T, Dehne T, Morawietz L, Ringe J, Kaps C, Sittlinger M: Key regulatory molecules of cartilage destruction in rheumatoid arthritis: an *in vitro* study. *Arthritis Res Ther* 2008, **10**:R9:1-16.
- Smolen JS, Steiner G: Therapeutic strategies for rheumatoid arthritis. *Nat Rev Drug Discov* 2003, **2**:473-488.
- Park JY, Pillinger MH: Interleukin-6 in the pathogenesis of rheumatoid arthritis. *Bull NYU Hosp Jt Dis* 2007, **65**(Suppl 1):S4-10.
- Fonseca JE, Santos MJ, Canhao H, Choy E: Interleukin-6 as a key player in systemic inflammation and joint destruction. *Autoimmun Rev* 2009, **8**:538-542.
- Choy EH, Panayi GS: Cytokine pathways and joint inflammation in rheumatoid arthritis. *N Engl J Med* 2001, **344**:907-916.
- Zwerina J, Redlich K, Polzer K, Joosten L, Kronke G, Distler J, Hess A, Pundt N, Pap T, Hoffmann O, Gasser J, Scheinecker C, Smolen JS, van den Berg W, Schett G: TNF-induced structural joint damage is mediated by IL-1. *Proc Natl Acad Sci USA* 2007, **104**:11742-11747.
- Khoury M, Escriou V, Courties G, Galy A, Yao R, Largeau C, Scherman D, Jorgensen C, Apparailly F: Efficient suppression of murine arthritis by combined anticytokine small interfering RNA lipoplexes. *Arthritis Rheum* 2008, **58**:2356-2367.
- Joosten LA, Helsen MM, van de Loo FA, van den Berg WB: Anticytokine treatment of established type II collagen-induced arthritis in DBA/1 mice: a comparative study using anti-TNFalpha, anti-IL-1alpha/beta and IL-1Ra. *Arthritis Rheum* 2008, **58**:S110-122.
- Feldmann M, Brennan FM, Williams RO, Woody JN, Maini RN: The transfer of a laboratory based hypothesis to a clinically useful therapy: the development of anti-TNF therapy of rheumatoid arthritis. *Best Pract Res Clin Rheumatol* 2004, **18**:59-80.
- Hoff M, Kvien TK, Kalvesten J, Elden A, Haugeberg G: Adalimumab therapy reduces hand bone loss in early rheumatoid arthritis: explorative analyses from the PREMIER study. *Ann Rheum Dis* 2009, **68**:1171-1176.
- Furst DE: The risk of infections with biologic therapies for rheumatoid arthritis. *Semin Arthritis Rheum* 2010, **39**:327-346.
- Khan IH, Krishnan VV, Ziman M, Janatpour K, Wun T, Luciw PA, Tuscano J: A comparison of multiplex suspension array large-panel kits for profiling cytokines and chemokines in rheumatoid arthritis patients. *Cytometry B Clin Cytom* 2009, **76**:159-168.
- Buchner E, Brauer R, Schmidt C, Emmrich F, Kinne RW: Induction of flare-up reactions in rat antigen-induced arthritis. *J Autoimmun* 1995, **8**:61-74.
- Griffiths RJ: Characterisation and pharmacological sensitivity of antigen arthritis induced by methylated bovine serum albumin in the rat. *Agents Actions* 1992, **35**:88-95.
- Kirkham BW, Lassere MN, Edmonds JP, Juhasz KM, Bird PA, Lee CS, Shnier R, Portek IJ: Synovial membrane cytokine expression is predictive of joint damage progression in rheumatoid arthritis: a two-year prospective study (the DAMAGE study cohort). *Arthritis Rheum* 2006, **54**:1122-1131.
- Pohlert D, Siegling A, Buchner E, Schmidt-Weber CB, Palombo-Kinne E, Emmrich F, Brauer R, Kinne RW: Expression of cytokine mRNA and protein in joints and lymphoid organs during the course of rat antigen-induced arthritis. *Arthritis Res Ther* 2005, **7**:R445-457.
- Szekanecz Z, Halloran MM, Volin MV, Woods JM, Strieter RM, Kenneth Haines G, Kunkel SL, Burdick MD, Koch AE: Temporal expression of inflammatory cytokines and chemokines in rat adjuvant-induced arthritis. *Arthritis Rheum* 2000, **43**:1266-1277.
- Rioja I, Bush KA, Buckton JB, Dickson MC, Life PF: Joint cytokine quantification in two rodent arthritis models: kinetics of expression, correlation of mRNA and protein levels and response to prednisolone treatment. *Clin Exp Immunol* 2004, **137**:65-73.
- Bolon B, Campagnuolo G, Zhu L, Duryea D, Zack D, Feige U: Interleukin-1beta and tumor necrosis factor-alpha produce distinct, time-dependent patterns of acute arthritis in the rat knee. *Vet Pathol* 2004, **41**:235-243.
- McDougall JJ, Watkins L, Li Z: Vasoactive intestinal peptide (VIP) is a modulator of joint pain in a rat model of osteoarthritis. *Pain* 2006, **123**:98-105.
- Rooney M, Condell D, Quinlan W, Daly L, Whelan A, Feighery C, Bresnihan B: Analysis of the histologic variation of synovitis in rheumatoid arthritis. *Arthritis Rheum* 1988, **31**:956-963.
- Alex P, Szodoray P, Knowlton N, Dozmorov IM, Turner M, Frank MB, Arthur RE, Willis L, Flinn D, Hynd RF, Carson C, Kumar A, El-Gabalawy HS, Centola M: Multiplex serum cytokine monitoring as a prognostic tool in rheumatoid arthritis. *Clin Exp Rheumatol* 2007, **25**:584-592.
- Chandra PE, Sokolove J, Hipp BG, Lindstrom TM, Elder JT, Reveille JD, Eberl H, Klaus U, Robinson WH: Novel multiplex technology for diagnostic characterization of rheumatoid arthritis. *Arthritis Res Ther* 2011, **13**:R102.
- Presle N, Cipolletta C, Jouzeau JY, Abid A, Netter P, Terlain B: Cartilage protection by nitric oxide synthase inhibitors after intraarticular injection of interleukin-1beta in rats. *Arthritis Rheum* 1999, **42**:2094-2102.
- Grossin L, Cournil-Henrionnet C, Pinzano A, Gaborit N, Dumas D, Etienne S, Stoltz JF, Terlain B, Netter P, Mir LM, Gillet P: Gene transfer with HSP 70 in rat chondrocytes confers cytoprotection *in vitro* and during experimental osteoarthritis. *Faseb J* 2006, **20**:65-75.
- Tonussi CR, Ferreira SH: Rat knee-joint carrageenin incapacitation test: an objective screen for central and peripheral analgesics. *Pain* 1992, **48**:421-427.
- Tonussi CR, Ferreira SH: Tumour necrosis factor-alpha mediates carrageenin-induced knee-joint incapacitation and also triggers overt nociception in previously inflamed rat knee-joints. *Pain* 1999, **82**:81-87.
- Dinarello CA: Immunological and inflammatory functions of the interleukin-1 family. *Annu Rev Immunol* 2009, **27**:519-550.
- Pessler F, Mayer CT, Jung SM, Behrens EM, Dai L, Menetski JP, Schumacher HR: Identification of novel monosodium urate crystal regulated mRNAs by transcript profiling of dissected murine air pouch membranes. *Arthritis Res Ther* 2008, **10**:R64.
- Conway JG, Andrews RC, Beaudet B, Bickett DM, Bonce V, Brodie TA, Clark RL, Crumrine RC, Leenitzer MA, McDougall DL, Han B, Hedeon K, Lin P, Milla M, Moss M, Pink H, Rabinowitz MH, Tippin T, Scates PW, Selph J, Stimpson SA, Warner J, Becherer JD: Inhibition of tumor necrosis factor-alpha (TNF-alpha) production and arthritis in the rat by GW3333, a dual inhibitor of TNF-alpha-converting enzyme and matrix metalloproteinases. *J Pharmacol Exp Ther* 2001, **298**:900-908.
- Fujisawa T, Igeta K, Odake S, Morita Y, Yasuda J, Morikawa T: Highly water-soluble matrix metalloproteinases inhibitors and their effects in a rat adjuvant-induced arthritis model. *Bioorg Med Chem* 2002, **10**:2569-2581.
- Deffaud J, Kirchmeyer M, Domagala F, Ficheux H, Netter P, Bianchi A, Jouzeau JY: Modulatory effect of rhein on IL-1alpha-induced responses in human chondrocytes: a comparative study between antibody microarrays and specific ELISAs. *Biorheology* 2008, **45**:439-455.
- De Ceuninck F, Dassencourt L, Anract P: The inflammatory side of human chondrocytes unveiled by antibody microarrays. *Biochem Biophys Res Commun* 2004, **323**:960-969.
- Kokkonen H, Soderstrom I, Rocklov J, Hallmans G, Lejon K, Rantapaa Dahlqvist S: Up-regulation of cytokines and chemokines predates the onset of rheumatoid arthritis. *Arthritis Rheum* 2010, **62**:383-391.
- Klimiuk PA, Sierakowski S, Domyslawska I, Chwiecko J: Regulation of serum chemokines following infliximab therapy in patients with rheumatoid arthritis. *Clin Exp Rheumatol* 2006, **24**:529-533.
- Ingegnoli F, Fantini F, Favalli EG, Soldi A, Griffini S, Galbiati V, Meroni PL, Cugno M: Inflammatory and prothrombotic biomarkers in patients with rheumatoid arthritis: effects of tumor necrosis factor-alpha blockade. *J Autoimmun* 2008, **31**:175-179.
- Petrovic-Rackov L: Evaluation of the degree of clinical rheumatoid arthritis activity based on the concentrations of cytokines TNF-alpha, IL-12, IL-15, and IL-18 in serum and synovial fluid [in Serbian]. *Vojnosanit Pregl* 2006, **63**:21-26.
- Leisten JC, Gaarde WA, Scholz W: Interleukin-6 serum levels correlate with footpad swelling in adjuvant-induced arthritic Lewis rats treated with



- cyclosporin A or indomethacin. *Clin Immunol Immunopathol* 1990, **56**:108-115.
42. Raza K, Falciani F, Curnow SJ, Ross EJ, Lee CY, Akbar AN, Lord JM, Gordon C, Buckley CD, Salmon M: **Early rheumatoid arthritis is characterized by a distinct and transient synovial fluid cytokine profile of T cell and stromal cell origin.** *Arthritis Res Ther* 2005, **7**:R784-795.
43. Punzi L, Calo L, Plebani M: **Clinical significance of cytokine determination in synovial fluid.** *Crit Rev Clin Lab Sci* 2002, **39**:63-88.
44. Bendele A: **Animal models of rheumatoid arthritis.** *J Musculoskelet Neuronal Interact* 2001, **1**:377-385.
45. Krohn KD, Brandt KD, Braunstein E, Mathews V: **Hereditary symphalangism. Association with osteoarthritis.** *J Rheumatol* 1989, **16**:977-982.
46. Conti P, Reale M, Barbacane RC, Castellani ML, Orso C: **Differential production of RANTES and MCP-1 in synovial fluid from the inflamed human knee.** *Immunol Lett* 2002, **80**:105-111.
47. Menten P, Wuyts A, Van Damme J: **Macrophage inflammatory protein-1. Cytokine Growth Factor Rev 2002, **13**:455-481.**
48. Ponath PD, Qin S, Ringler DJ, Clark-Lewis I, Wang J, Kassam N, Smith H, Shi X, Gonzalo JA, Newman W, Gutierrez-Ramos JC, Mackay CR: **Cloning of the human eosinophil chemoattractant, eotaxin. Expression, receptor binding, and functional properties suggest a mechanism for the selective recruitment of eosinophils.** *J Clin Invest* 1996, **97**:604-612.
49. Syversen SW, Goll GL, Haavardsholm EA, Boyesen P, Lea T, Kvien TK: **A high serum level of eotaxin (CCL 11) is associated with less radiographic progression in early rheumatoid arthritis patients.** *Arthritis Res Ther* 2008, **10**:R28.
50. Thornton S, Duwel LE, Boivin GP, Ma Y, Hirsch R: **Association of the course of collagen-induced arthritis with distinct patterns of cytokine and chemokine messenger RNA expression.** *Arthritis Rheum* 1999, **42**:1109-1118.
51. Barnes DA, Tse J, Kaufhold M, Owen M, Hesselgesser J, Strieter R, Horuk R, Perez HD: **Polyclonal antibody directed against human RANTES ameliorates disease in the Lewis rat adjuvant-induced arthritis model.** *J Clin Invest* 1998, **101**:2910-2919.
52. Shahrara S, Proudfoot AE, Woods JM, Ruth JH, Amin MA, Park CC, Haas CS, Pope RM, Haines GK, Zha YY, Koch AE: **Amelioration of rat adjuvant-induced arthritis by Met-RANTES.** *Arthritis Rheum* 2005, **52**:1907-1919.
53. Tetlow LC, Woolley DE: **Eosinophils are an insignificant cellular component of rheumatoid synovium in patients with late stage disease: comparative distributions with mast cells and macrophages.** *Ann Rheum Dis* 1996, **55**:548-551.
54. Bockermann R, Holmdahl R: **Type II collagen without adjuvant induces eosinophilic arthritis.** *Eur J Immunol* 2007, **37**:540-548.
55. Cook DN: **The role of MIP-1 alpha in inflammation and hematopoiesis.** *J Leukoc Biol* 1996, **59**:61-66.
56. Soria G, Yaal-Hahoshen N, Azenshtein E, Shina S, Leider-Trejo L, Rivo L, Cohen-Hillel E, Shtabsky A, Ehrlich M, Meshel T, Keydar I, Ben-Baruch A: **Concomitant expression of the chemokines RANTES and MCP-1 in human breast cancer: a basis for tumor-promoting interactions.** *Cytokine* 2008, **44**:191-200.
57. Boettger MK, Hensellek S, Richter F, Gajda M, Stockigt R, von Banchet GS, Brauer R, Schaible HG: **Antinociceptive effects of tumor necrosis factor alpha neutralization in a rat model of antigen-induced arthritis: evidence of a neuronal target.** *Arthritis Rheum* 2008, **58**:2368-2378.
58. Herman S, Kronke G, Schett G: **Molecular mechanisms of inflammatory bone damage: emerging targets for therapy.** *Trends Mol Med* 2008, **14**:245-253.
59. Matsui K, Tsutsui H, Nakanishi K: **Pathophysiological roles for IL-18 in inflammatory arthritis.** *Expert Opin Ther Targets* 2003, **7**:701-724.
60. Kimura T, Kato Z, Ohnishi H, Tochio H, Shirakawa M, Kondo N: **Expression, purification and structural analysis of human IL-18 binding protein: a potent therapeutic molecule for allergy.** *Allergol Int* 2008, **57**:367-376.
61. Darwich L, Coma G, Pena R, Bellido R, Blanco EJ, Este JA, Borrás FE, Clotet B, Ruiz L, Rosell A, Andreo F, Parkhouse RM, Bofill M: **Secretion of interferon-gamma by human macrophages demonstrated at the single-cell level after costimulation with interleukin (IL)-12 plus IL-18.** *Immunology* 2008, **126**:386-393.
62. Lubberts E, Koenders MI, van den Berg WB: **The role of T-cell interleukin-17 in conducting destructive arthritis: lessons from animal models.** *Arthritis Res Ther* 2005, **7**:29-37.
63. Lubberts E, Koenders MI, Oppers-Walgreen B, van den Bersselaar L, Coenende Roo CJ, Joosten LA, van den Berg WB: **Treatment with a neutralizing anti-murine interleukin-17 antibody after the onset of collagen-induced arthritis reduces joint inflammation, cartilage destruction, and bone erosion.** *Arthritis Rheum* 2004, **50**:650-659.
64. Iwanami K, Matsumoto I, Tanaka-Watanabe Y, Inoue A, Mihara M, Ohsugi Y, Mamura M, Goto D, Ito S, Tsutsumi A, Kishimoto T, Sumida T: **Crucial role of the interleukin-6/interleukin-17 cytokine axis in the induction of arthritis by glucose-6-phosphate isomerase.** *Arthritis Rheum* 2008, **58**:754-763.
65. Pacquelet S, Presle N, Boileau C, Dumond H, Netter P, Martel-Pelletier J, Pelletier JP, Terlain B, Jouzeau JY: **Interleukin 17, a nitric oxide-producing cytokine with a peroxynitrite-independent inhibitory effect on proteoglycan synthesis.** *J Rheumatol* 2002, **29**:2602-2610.
66. Nagy JA, Dvorak AM, Dvorak HF: **VEGF-A and the induction of pathological angiogenesis.** *Annu Rev Pathol* 2007, **2**:251-275.
67. Eyles JL, Roberts AW, Metcalf D, Wicks IP: **Granulocyte colony-stimulating factor and neutrophils-forgotten mediators of inflammatory disease.** *Nat Clin Pract Rheumatol* 2006, **2**:500-510.
68. Fleetwood AJ, Cook AD, Hamilton JA: **Functions of granulocyte-macrophage colony-stimulating factor.** *Crit Rev Immunol* 2005, **25**:405-428.
69. Lago R, Gomez R, Lago F, Gomez-Reino J, Gualillo O: **Leptin beyond body weight regulation-current concepts concerning its role in immune function and inflammation.** *Cell Immunol* 2008, **252**:139-145.
70. Lee CG, Homer RJ, Zhu Z, Lanone S, Wang X, Koteliangsky V, Shipley JM, Gotwals P, Noble P, Chen Q, Senior RM, Elias JA: **Interleukin-13 induces tissue fibrosis by selectively stimulating and activating transforming growth factor beta(1).** *J Exp Med* 2001, **194**:809-821.
71. Munitz A, Brandt EB, Mingler M, Finkelman FD, Rothenberg ME: **Distinct roles for IL-13 and IL-4 via IL-13 receptor alpha1 and the type II IL-4 receptor in asthma pathogenesis.** *Proc Natl Acad Sci USA* 2008, **105**:7240-7245.
72. Renauld JC: **Role of interleukin-9 in asthma and allergic reactions.** *Bull Mem Acad R Med Belg* 2007, **162**:275-282.
73. Xu D, Jiang HR, Kewin P, Li Y, Mu R, Fraser AR, Pitman N, Kurowska-Stolarska M, McKenzie AN, McInnes IB, Liew FY: **IL-33 exacerbates antigen-induced arthritis by activating mast cells.** *Proc Natl Acad Sci USA* 2008, **105**:10913-10918.

doi:10.1186/ar3774

**Cite this article as:** Paquet et al.: Cytokines profiling by multiplex analysis in experimental arthritis: which pathophysiological relevance for articular versus systemic mediators? *Arthritis Research & Therapy* 2012 **14**:R60.

**Submit your next manuscript to BioMed Central and take full advantage of:**

- Convenient online submission
- Thorough peer review
- No space constraints or color figure charges
- Immediate publication on acceptance
- Inclusion in PubMed, CAS, Scopus and Google Scholar
- Research which is freely available for redistribution

Submit your manuscript at  
www.biomedcentral.com/submit

