



**HAL**  
open science

## Microstructure variation and hardness diminution during low cycle fatigue of 55NiCrMoV7 steel

Zhan-Ping Zhang, Yu-Hong Qi, Denis Delagnes, Gérard Bernhart

► **To cite this version:**

Zhan-Ping Zhang, Yu-Hong Qi, Denis Delagnes, Gérard Bernhart. Microstructure variation and hardness diminution during low cycle fatigue of 55NiCrMoV7 steel. *Journal of Iron and Steel Research International*, 2007, 14 (6), pp.68-73. 10.1016/S1006-706X(07)60093-4 . hal-01715083

**HAL Id: hal-01715083**

**<https://hal.science/hal-01715083>**

Submitted on 11 Jan 2019

**HAL** is a multi-disciplinary open access archive for the deposit and dissemination of scientific research documents, whether they are published or not. The documents may come from teaching and research institutions in France or abroad, or from public or private research centers.

L'archive ouverte pluridisciplinaire **HAL**, est destinée au dépôt et à la diffusion de documents scientifiques de niveau recherche, publiés ou non, émanant des établissements d'enseignement et de recherche français ou étrangers, des laboratoires publics ou privés.

# Microstructure Variation and Hardness Diminution During Low Cycle Fatigue of 55NiCrMoV7 Steel

ZHANG Zhan-ping<sup>1</sup>, QI Yu-hong<sup>1</sup>, DELAGNES Denis<sup>2</sup>, BERNHART Gérard<sup>2</sup>

(1. Electro-Mechanics and Materials College, Dalian Maritime University, Dalian 116026, Liaoning, China; 2. Research Center on Tools, Materials and Processes, Ecole des Mines d'Albi-Carmaux, 81013 Albi CT cedex 09, France)

**Abstract:** The influence of temperature and hardness level on the cyclic behavior of 55NiCrMoV7 steel, and the microstructure variation and hardness diminution during low cycle fatigue behavior were investigated. By means of SEM and XRD, the modality of carbides and the full-width half-maximum (FWHM) of martensite (211) [M(211)] of X-ray diffraction spectrum in fatigue specimen were studied. The results showed that the cyclic stress response behavior generally showed an initial exponential softening for the first few cycles, followed by a gradual softening without cyclic softening saturation. The fatigue behavior of the steel is closely related to the hardness level. The hardness diminution and the variation of half-width M(211) are remarkably influenced by the interaction between the cyclic plastic deformation and the thermal loading when the fatigue temperature exceeds the tempering temperature of the steel.

**Key words:** low cycle fatigue; 55NiCrMoV7 steel; microstructure; hardness; half-width

Hot-work tool steels are widely used in various heat-treatment (i. e. tempering conditions) states to obtain the mechanical properties requested by the industrial application, like hot forging, casting, hot-rolling, extrusion, where the steel endures cyclic thermal and mechanical loads<sup>[1]</sup>. Some of the investigations indicate that cyclic plasticity is responsible, in parallel to wear and abrasion, for the tool limit lifetime<sup>[2,3]</sup>. Nevertheless, the fatigue behavior of steel not only depends on the fatigue test conditions such as temperature, frequency, strain amplitude, stress ratio, etc. , but also on the microstructure, which can be controlled by means of heat treatment.

Some investigations have shown that the interface temperature between the die and the work-piece surpasses the tempering temperature of the steel. In such conditions, the steel can be subjected to a continuous evolution of microstructure and mechanical properties during service. It is therefore of great importance to derive an anisothermal constitutive model, which may be able to take into account the great

range of strain rates, the temperature variations, as well as the effect of ageing. The ultimate aim of such an approach, which consists in understanding the interactions between the microstructure and properties, is to ensure a good prediction of fatigue behavior to optimize tool design and to derive a more realistic life prediction model. For this goal, some models have been investigated during the last years in the case of stable microstructure<sup>[4-7]</sup>, and more recently, an anisothermal cyclic behavior model that takes into account the ageing (tempering) effect of a martensitic tool steel was proposed by ZHANG<sup>[8,9]</sup>. These models have to be developed based on the experimental results.

This study reports the low cycle fatigue behavior and the microstructure evolution of hot-work tool steel with four different initial tempering treatments.

## 1 Experiments

The material investigated is 55NiCrMoV7 hot-

**Foundation Item:** Item Sponsored by Scientific Research Foundation for Returned Overseas Chinese Scholars, State Education Ministry (2004176)

**Biography:** ZHANG Zhan-ping(1963-), Male, Doctor, Professor; **E-mail:** zzp@newmail.dlmu.edu.cn; **Revised Date:** April 3, 2006

work tool steel with a chemical composition (mass percent, %) of C 0.56, Ni 1.7, Cr 1.0, Mo 0.5, V 0.1, Si 0.2, and Mn 0.7. The microstructure evolutions of the steel were investigated with SEM (PHILIPS-XL30) and XRD (D/max-IIIa). The XRD spectrum was measured in continuous scanning mode, using CoK $\alpha$  line at 35 kV and 30 mA. The recording was done for scanning angle ranging from 20–120 ( $^{\circ}$ ) at a scanning speed of 4 ( $^{\circ}$ )/min. The XRD spectrum and data were treated by PowderX<sup>[10]</sup>. The quenched microstructure contains martensitic laths and the tempered one consists of carbides and martensite. To investigate the effect of tempering on the cyclic fatigue behavior, samples were manufactured with four hardness levels for standard industrial applications. The heat-treatment conditions and the hardness of the steel are reported in Table 1.

The isothermal fatigue behavior of the steel for each tempering state was investigated in the 20–600  $^{\circ}$ C range. All fatigue tests were carried out with an MTS 810 closed-loop servo-hydraulic testing machine and a Teststar II<sup>TM</sup> controller connected to a personal computer. The samples were subjected to total strain fatigue tests at the following temperatures: 20  $^{\circ}$ C, 300  $^{\circ}$ C, 400  $^{\circ}$ C, 500  $^{\circ}$ C, and 600  $^{\circ}$ C. The round specimens were mounted in water-cooled grips and heating was achieved with a 6 kW induction generator. The temperature was controlled in the middle of the sample by mechanically applied thermocouples<sup>[7]</sup>. The strain was recorded using a 12 mm gage length contact extensometer with alumina rods. Cyclic tests were started after heating at a rate of 200  $^{\circ}$ C/min and a temperature stabilization of 75 s.

The total strain amplitude is fixed to  $\pm 0.8\%$  during all low cycle fatigue tests, whereas the strain rate is  $10^{-2}$  s $^{-1}$ . The number of cycles ( $N$ ) was selected to reach a near constant cumulative plastic strain close to 4 mm/mm (i. e. without rupture) for all tests. The hardness was measured using a Buehler<sup>®</sup> MICROMET<sup>®</sup> 2001 type microhardness tester. Thirty

indentations were performed on each sample with 2 N load. The mean value was considered as the hardness result.

## 2 Low Cycle Fatigue Behavior

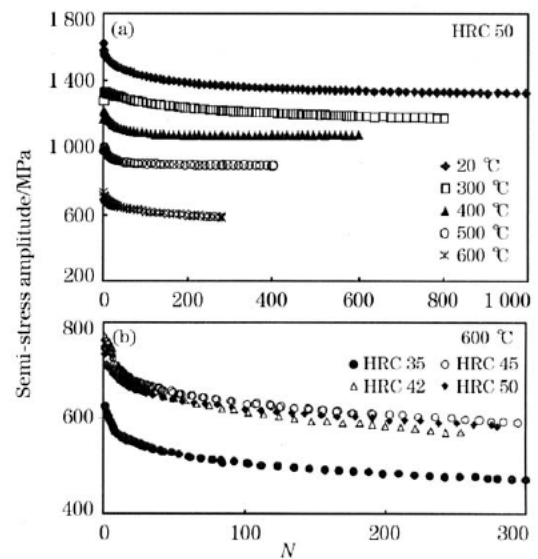
### 2.1 Typical experimental results

The typical cyclic behavior of the 55NiCrMoV7 steel is shown in Fig. 1 by the  $\Delta\sigma/2-N$  curves. The results indicate that at 300  $^{\circ}$ C and 20  $^{\circ}$ C, the curves are clearly separated by the stress amplitude and the hardness level [Fig. 1 (a)]; the semi-stress amplitude increases when the hardness increases, whereas at 500  $^{\circ}$ C and 600  $^{\circ}$ C, some curves cannot be easily distinguished. Three of these curves are very close in Fig. 1 (b) and the curve of the HRC 50 sample is even lower than that of the HRC 45.5 sample. This phenomenon seems surprising and will be discussed in the following sections. As seen, the semi-stress amplitude decreases with the number of cycles. The steel manifests the behavior of cyclic softening under the loading of cyclic strain regardless of the hardness of the steel and the test temperature. This softening can be divided into two phases, which are the rapid softening phase during the initial cycles followed by the slow softening phase. The former is generally explained by the exponential change of the density and the structure of dislocations. Generally speaking, the latter is related to the modification of the dislocation sub-structure and carbide in the steel by the action of cyclic load.

**Table 1** Quenching and tempering conditions of fatigue samples

Tempering temperature/ $^{\circ}$ C	350	460	560	600
Tempering time/h	2	2	2	2
Hardness (HV0.2)	570	505	457	374
Hardness (HRC)	50	45.5	42	35

Note: Quenching condition: austenizing at 850  $^{\circ}$ C for 1 h, quenching in vacuum



(a) For HRC 50; (b) At 600  $^{\circ}$ C

**Fig. 1** Typical  $\Delta\sigma/2-N$  curves of 55NiCrMoV7 steel at  $\Delta\varepsilon_t = \pm 0.8\%$

## 2.2 Temperature, hardness, and cyclic behavior

### 2.2.1 Maximum stress

The variation of maximum stress with the test temperature is shown in Fig. 2. For each hardness level, the maximum stress decreases with the test temperature. The values of the maximum stress of the steel with higher hardness level are even smaller than that of the steel with lower hardness level at elevated temperature. Fig. 3 shows the evolution of maximum stress with the temperature difference between fatigue and tempering of test steel. Fig. 3 can be divided into two parts; for the left part, the difference is negative, and the maximum stress decreases linearly with the difference for each level of hardness; at the right part of Fig. 3, when the difference is positive, the maximum stress decreases more violently because of the interaction of temperature and stabilization of steel. It is obvious to relate with the evolution of the steel, i. e. the thermal ageing effect.

### 2.2.2 Intensity of cyclic softening

Fig. 4 presents the evolution of the intensity of softening at cumulative plastic strain  $p=4$  with test temperature for HRC 35 and HRC 42 specimen. As seen, the intensity of softening  $[(\sigma/2)_{\max} - (\Delta\sigma/2)_{p=4}]$  at  $p=4$  increases with the increase of test temperature

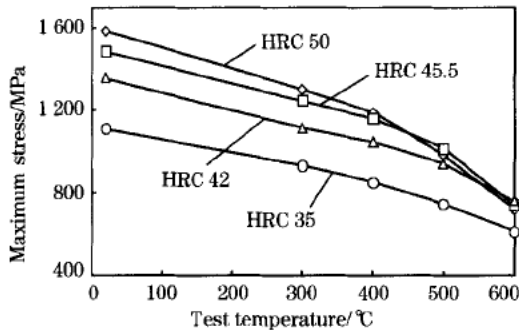


Fig. 2 Maximum stress of steels vs test temperature

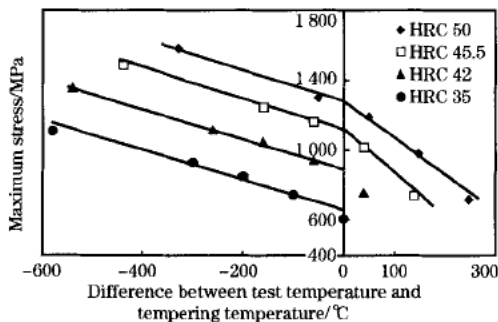


Fig. 3 Maximum stress vs difference between test temperature and tempering temperature

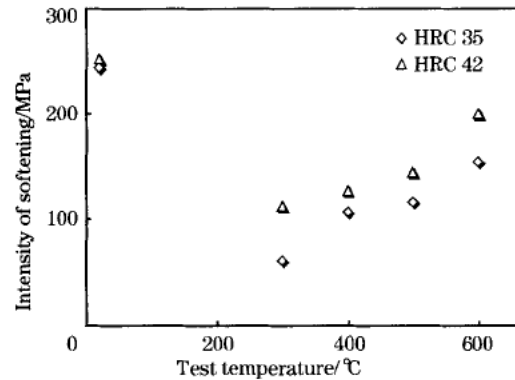


Fig. 4 Intensity of softening vs test temperature

from 300 °C to 600 °C, and rises with hardness at each temperature. The value reaches up to 200 MPa at 600 °C for HRC 42 sample. However, the maximum intensity of softening appears at 20 °C for each hardness specimen.

### 2.2.3 Discussion

Fig. 5 shows the relation between the hardness of the steel tempered and the semi-stress amplitudes at  $p=3$ . It is clear that the semi-stress amplitudes increase linearly with the hardness of steel tempered at room temperature and at 300 °C. When the test temperature is equal to or is greater than 400 °C, the semi-stress amplitudes do not follow the former linear relation in the domain of the higher hardness level. This “unusual” phenomenon becomes more visible in Fig. 6, in which the maximum stresses during first loading are drawn with hardness. What is the root cause for this “unusual” phenomenon? Further analyses indicated that all points diverged its linearity happened when the test temperature is equal to or is greater than the tempering temperature of the steel. This indicates that the steel is not stable during fatigue, and the hardness and the microstructure can be modified by thermal cycle when the steel is subjected to temperatures equal to or higher than the tempering temperatures, even for short times (a temperature stabilization of 75 s before cycling). It was testified by some investigations on the evolution of hardness after cyclic fatigue tests and equivalent ageing tests<sup>[8]</sup>. As a consequence, the tempered hardness cannot correctly represent the cyclic behavior of the steel when it is subjected to ageing. It is necessary to determine an appropriate parameter for correctly describing such an influence of temperature in a cyclic constitutive model. Corresponding investigations will be reported in another article.

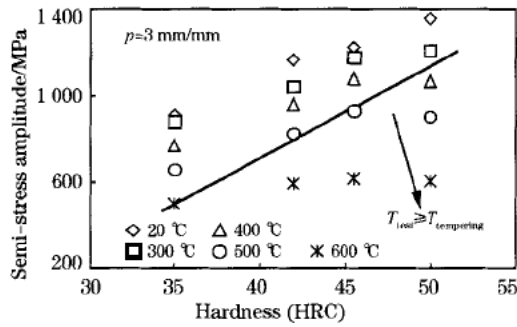


Fig. 5 Semi-stress amplitude at  $p=3$  vs hardness

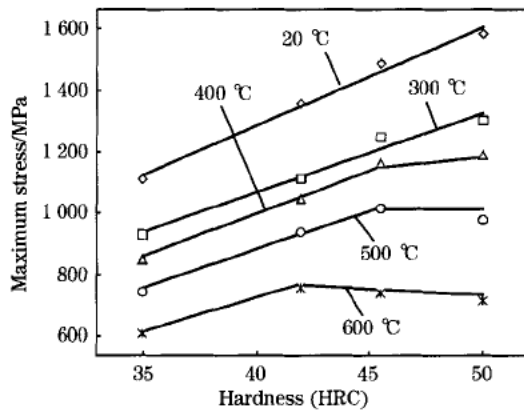


Fig. 6 Maximum stress of steel vs hardness

### 3 Hardness Diminution and Microstructure Variation During Test

As above-mentioned, the cyclic behavior of the steel was strongly related to the temperature and hardness, and obviously to the fatigue-aging interaction. The hardness changes of the test specimens are shown in Fig. 7 with respect to the difference between the test and tempering temperatures. When the test temperature is lower than the initial tempering temperature, the absolute value of hardness diminution is low and there is no change with the temperature difference and the initial hardness level at room temperature. However, the hardness diminution is considerably higher and it increases more rapidly when the temperature difference is positive. It can even decrease to HV 225 for the HRC 50 sample tested at 600 °C; here, the hardness after test is close to 40% of the initial hardness. To investigate the role of mechanical loads and thermal aging on the evolution of the steel during test, some equivalent tempering tests were carried out, and the tempering temperature and time were selected corresponding to that of the relevant fatigue test (ref. Table 2). The

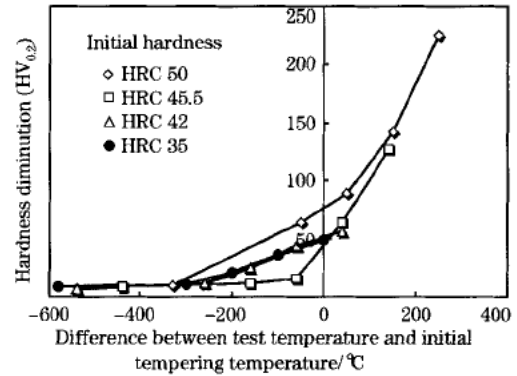


Fig. 7 Relation between absolute value of hardness diminution and temperature difference

hardness measured and the full-width half-maximum (FWHM) of martensite (211) [M(211)] are reported in Table 2.

Compared with the initial tempered state, both the hardness and the FWHM of M(211) decreased during the fatigue test and during equivalent tempering. During tempering/aging of steel quenched, because of the phase transformation promoted by diffusion from an unstable state to a quasi equilibrium state, martensite with higher density dislocations is transformed to ferrite with lower density dislocations and globular carbides. Therefore, the hardness and FWHM of M(211) decrease during tempering/aging. Further analysis indicated that both the hardness diminution and the FWHM diminution during fatigue test could be divided into two parts, one is induced by thermal effect/aging and another is caused by mechanical cyclic loads/fatigue. The total and the thermal hardness diminution increase with the test temperature, and the total hardness diminution owes entirely to the mechanical loads at room temperature (Fig. 8). Thermal hardness diminution even occurs at test temperature (300 °C) that is lower than the initial tempering temperature (350 °C). It means that the steel may be aged even if the temperature in service is lower than the initial tempering temperature of the steel. As known from the hardness evolution, the total FWHM diminution fluctuates with the temperature difference in a small bound. The thermal proportion in the total FWHM diminutions increases, but the mechanical proportion decreases with the temperature difference when the test temperature is higher than the initial tempering temperature (Fig. 9). The different evolutions between the hardness diminution and the FWHM

**Table 2 Hardness and FWHM of M(211) for HRC 50 specimens**

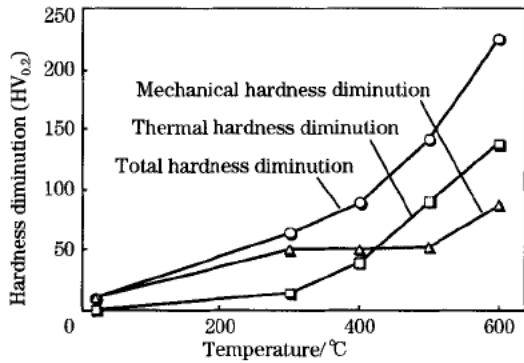
Initial tempering temperature/°C	Fatigue test							
	Temperature / °C	Duration/ s	Hardness (HV <sub>0.2</sub> )			FWHM of M(211)		
			Before test	After test	Total diminution	Before test	After test	Total diminution
350	20	6 754	570	560	10	1. 226 5	0. 730 7	0. 495 8
350	300	5 474	581	517	64	1. 226 5	0. 663 7	0. 562 8
350	400	4 799	580	491	89	1. 226 5	0. 642 9	0. 583 6
350	500	4 122	584	442	142	1. 226 5	0. 688 6	0. 537 9
350	600	3 458	584	359	225	1. 226 5	0. 560 1	0. 666 4

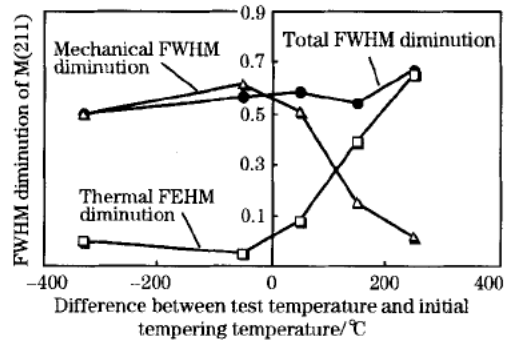
Initial tempering temperature/°C	Equivalent tempering							
	Temperature/ °C	Duration/ s	Hardness (HV <sub>0.2</sub> )			FWHM of M(211)		
			Before test	After test	Thermal diminution	Before test	After test	Thermal diminution
350	20	6 760	570	570	0	1. 226 5	1. 226 5	0
350	300	5 520	581	567	14	1. 226 5	1. 276 8	-0. 050 3
350	400	4 800	580	541	39	1. 226 5	1. 149 7	0. 076 8
350	500	4 140	584	494	90	1. 226 5	0. 837 6	0. 388 9
350	600	3 480	584	446	138	1. 226 5	0. 575 9	0. 650 6

diminution are derived from that FWHM of M(211) is only a reflection of irregularity of the crystal lattice, and the hardness change involves not only from irregularity of crystal lattice but also from other causes for morphology and size of carbides, etc. SEM

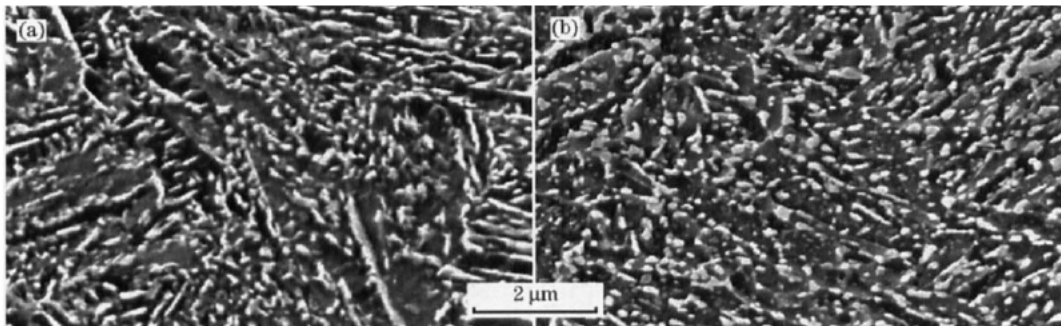
observations showed that with the diminution of FWHM, the morphology and the dimensions of carbides in the steel varied during the fatigue test. As seen in Fig. 10, it is evident that compared with the microstructure tempered at 600 °C of the steel



**Fig. 8 Hardness diminutions for specimen (HRC 50) during fatigue test**



**Fig. 9 FWHM diminutions for specimen (HRC 50) during fatigue test**



(a) Before fatigue; (b) After fatigue at 600 °C  
**Fig. 10 SEM morphology of carbides in steel**

[Fig. 10 (a)], the carbides become larger and more round, but the carbides' sum decreases [Fig. 10 (b)].

#### 4 Conclusions

(1) The steel manifests the behavior of cyclic softening under the loading of cyclic strain regardless of the hardness of the steel and the test temperature.

(2) The cyclic behavior of the steel was strongly related to the temperature and hardness, and obviously to the fatigue-aging interaction.

(3) Both hardness and FWHM diminution during fatigue test can be divided into two parts, one is induced by the thermal/aging effect and the other is caused by the mechanical cyclic/fatigue loads. The former occurs when the test temperature is more than the initial tempering temperature and it augments with the difference between the test temperature and the initial tempering temperature.

#### References:

- [1] Bernhart G, Moulinier G, Brucelle O, et al. High Temperature Low Cycle Fatigue Behaviour of a Martensitic Forging Tool Steel [J]. *Int J of Fatigue*, 1999, 21(2): 179-186.
- [2] Bournicon C. Sollicitations et Modes D'endommagement des Outillages de Forge à Chaud [J]. *Traitement Thermique*, 1991, 246: 70-77.
- [3] Delagnes D. Isothermal Fatigue Behaviour and Lifetime of a 5%Cr Hot Work Tool Steel Around the LCF-HCF Transition [D]. Paris, France; ENSMP, 1998.
- [4] Zhang Z, Delagnes D, Bernhart G. Stress-Strain Behaviour of Tool Steels Under Thermo-Mechanical Loadings: Experiment and Modeling [A]. Franz Jeglitsch, Reinhold Ebner, Harald Leitner, eds. *Tool Steels in the Next Century, Proceedings of the 5th International Tooling Conference* [C]. Leoben; University of Leoben, 1999. 205-213.
- [5] Velay V, Bernhart G, Zhang Z, et al. Cyclic Behaviour Modeling of Martensitic Hot Work Tool Steels [A]. Biallas G, Maier H J, Hahn O, et al, eds. *High-Temperature Fatigue, Proceedings CAMP2002* [C]. Bad Lippspringe; Paderborn, 2002. 64-75.
- [6] Bernhart G, Choi B G, Zhang Z, et al. Single Specimen Methodology for Elasto-Visco-Plastic Fatigue Model Identification of Martensitic Steels [A]. Miannay D, Costa P, Francois D, et al, eds. *Advances in Mechanical Behaviour, Plasticity and Damage* [C]. Oxford; Elsevier, 2000. 1077-1082.
- [7] Zhang Z, Delagnes D, Bernhart G. Anisothermal Cyclic Plasticity Modelling of Martensitic Steels [J]. *Int J of Fatigue*, 2002, 24(6): 635-648.
- [8] Zhang Z. Anisothermal Cyclic Behaviour Modelling With Taking Account of Tempering Effect of a Martensitic Tool Steel 55NiCrMoV7 [D]. Paris, France; ENSMP, 2002.
- [9] Zhang Z, Delagnes D, Bernhart G. Tempering Effect on Cyclic Behaviour of a Martensitic Tool Steel [A]. Jens Bergstrom, eds. *The Use of Tool Steels; Experience and Research, Proceedings of the 6th International Tooling Conference* [C]. Karlstad; Karlstad University, 2002. 573-589.
- [10] Dong C. PowderX User Manual [M]. Beijing; Institute of Physics, Chinese Academy of Sciences, 1998.