



HAL
open science

The Einstein@Home Gamma-ray Pulsar Survey. II. Source Selection, Spectral Analysis, and Multiwavelength Follow-up

J. Wu, C.J. Clark, H.J. Pletsch, L. Guillemot, T.J. Johnson, P. Torne, D.J.
Champion, J. Deneva, P.S. Ray, D. Salvetti, et al.

► **To cite this version:**

J. Wu, C.J. Clark, H.J. Pletsch, L. Guillemot, T.J. Johnson, et al.. The Einstein@Home Gamma-ray Pulsar Survey. II. Source Selection, Spectral Analysis, and Multiwavelength Follow-up. The Astrophysical Journal, 2018, 854 (2), pp.99. 10.3847/1538-4357/aaa411 . hal-01714167

HAL Id: hal-01714167

<https://hal.science/hal-01714167v1>

Submitted on 15 Apr 2020

HAL is a multi-disciplinary open access archive for the deposit and dissemination of scientific research documents, whether they are published or not. The documents may come from teaching and research institutions in France or abroad, or from public or private research centers.

L'archive ouverte pluridisciplinaire **HAL**, est destinée au dépôt et à la diffusion de documents scientifiques de niveau recherche, publiés ou non, émanant des établissements d'enseignement et de recherche français ou étrangers, des laboratoires publics ou privés.



The Einstein@Home Gamma-ray Pulsar Survey. II. Source Selection, Spectral Analysis, and Multiwavelength Follow-up

J. Wu¹, C. J. Clark^{2,3}, H. J. Pletsch^{2,3}, L. Guillemot^{1,4,5}, T. J. Johnson⁶, P. Torne¹, D. J. Champion¹, J. Deneva⁶, P. S. Ray⁷, D. Salvetti⁸, M. Kramer^{1,9,10}, C. Aulbert^{2,3}, C. Beer^{2,3}, B. Bhattacharyya¹¹, O. Bock^{2,3}, F. Camilo¹², I. Cognard^{4,5}, A. Cuéllar^{2,3}, H. B. Eggenstein^{2,3}, H. Fehrmann^{2,3}, E. C. Ferrara¹³, M. Kerr⁷, B. Machenschalk^{2,3}, S. M. Ransom¹⁴, S. Sanpa-Arsa¹⁵, and K. Wood¹⁶

¹ Max-Planck-Institut für Radioastronomie, Auf dem Hügel 69, D-53121 Bonn, Germany; jwu@mpifr-bonn.mpg.de, lucas.guillemot@cnrs-orleans.fr

² Albert-Einstein-Institut, Max-Planck-Institut für Gravitationsphysik, D-30167 Hannover, Germany

³ Leibniz Universität Hannover, D-30167 Hannover, Germany

⁴ Laboratoire de Physique et Chimie de l'Environnement et de l'Espace—Université d'Orléans/CNRS, F-45071 Orléans Cedex 02, France

⁵ Station de radioastronomie de Nançay, Observatoire de Paris, CNRS/INSU, F-18330 Nançay, France

⁶ College of Science, George Mason University, Fairfax, VA 22030, resident at Naval Research Laboratory, Washington, DC 20375, USA

⁷ Space Science Division, Naval Research Laboratory, Washington, DC 20375-5352, USA

⁸ INAF-Istituto di Astrofisica Spaziale e Fisica Cosmica Milano, via E. Bassini 15, I-20133 Milano, Italy

⁹ Jodrell Bank Centre for Astrophysics, School of Physics and Astronomy, The University of Manchester, M13 9PL, UK

¹⁰ University of Manchester, Manchester, M13 9PL, UK

¹¹ National Centre for Radio Astrophysics, Tata Institute of Fundamental Research, Pune 411 007, India

¹² Square Kilometre Array South Africa, Pinelands, 7405, South Africa

¹³ NASA Goddard Space Flight Center, Greenbelt, MD 20771, USA

¹⁴ National Radio Astronomy Observatory, Charlottesville, VA 22903, USA

¹⁵ National Astronomical Research Institute of Thailand, 191 Siriphanich Bldg., 2nd Fl., Huay Kaew Rd., Suthep District, Muang Mai 50200, Thailand

¹⁶ Praxis Inc., Alexandria, VA 22303, resident at Naval Research Laboratory, Washington, DC 20375, USA

Received 2017 September 13; revised 2017 November 29; accepted 2017 December 12; published 2018 February 15

Abstract

We report on the analysis of 13 gamma-ray pulsars discovered in the Einstein@Home blind search survey using *Fermi* Large Area Telescope (LAT) Pass 8 data. The 13 new gamma-ray pulsars were discovered by searching 118 unassociated LAT sources from the third LAT source catalog (3FGL), selected using the Gaussian Mixture Model machine-learning algorithm on the basis of their gamma-ray emission properties being suggestive of pulsar magnetospheric emission. The new gamma-ray pulsars have pulse profiles and spectral properties similar to those of previously detected young gamma-ray pulsars. Follow-up radio observations have revealed faint radio pulsations from two of the newly discovered pulsars and enabled us to derive upper limits on the radio emission from the others, demonstrating that they are likely radio-quiet gamma-ray pulsars. We also present results from modeling the gamma-ray pulse profiles and radio profiles, if available, using different geometric emission models of pulsars. The high discovery rate of this survey, despite the increasing difficulty of blind pulsar searches in gamma rays, suggests that new systematic surveys such as presented in this article should be continued when new LAT source catalogs become available.

Key words: gamma rays: stars – pulsars: individual (PSR J0002+6216, PSR J0631+0646, PSR J1624–4041, PSR J2017+3625)

Supporting material: machine-readable table

1. Introduction

Pulsars are rapidly rotating neutron stars with rotational periods ranging from more than 10 s to just a few milliseconds. Since their discovery in 1967 (Hewish et al. 1968), various pulsar surveys have discovered over 2600 pulsars.¹⁷ While the large majority of the known pulsars have been detected in the radio, pulsars are occasionally detected at optical, infrared, UV, X-ray, or even gamma-ray frequencies, enabling multiwavelength studies (for recent examples see Mignani et al. 2017; Swiggum et al. 2017).

During the first 8 yr of operation, over 200 gamma-ray pulsars have been detected by the *Fermi* Large Area Telescope¹⁸ (LAT; Atwood et al. 2009). The majority of the detected gamma-ray pulsars were first found in radio, discovered from either radio pulsar surveys or targeted radio

observations of unassociated LAT sources (i.e., sources with no obvious counterparts at other wavelengths; see, e.g., Cognard et al. 2011; Keith et al. 2011; Ransom et al. 2011; Camilo et al. 2012, 2015; Guillemot et al. 2012a; Kerr et al. 2012; Barr et al. 2013; Bhattacharyya et al. 2013; Cromartie et al. 2016). However, a substantial fraction of the gamma-ray pulsars have been discovered by direct, blind searches of the LAT data (e.g., Abdo et al. 2009; Saz Parkinson et al. 2010; Pletsch et al. 2012a; Clark et al. 2015).

Gamma-ray pulsars found in blind searches are interesting for many reasons. These pulsars are young and energetic with characteristic ages < 3 Myr and spin-down power $\dot{E} > 10^{33}$ erg s^{-1} (see Figure 1 of the second *Fermi* LAT catalog of gamma-ray pulsars, hereafter 2PC; Abdo et al. 2013). These young energetic pulsars often have timing noise and glitches. This absence of timing coherence makes their pulsations more difficult to find in the low count-rate gamma-ray data acquired over time spans of years. The discovery of PSR J1906+0722

¹⁷ <http://www.atnf.csiro.au/research/pulsar/psrcat/>

¹⁸ See <http://tinyurl.com/fermipulsars> for the list of LAT-detected pulsars.

(Clark et al. 2015) demonstrated the ability of the improved semicoherent blind search technique to detect pulsars even when the data contain timing noise and a substantial glitch. Such blind search methods can reduce the bias against the discovery of young and energetic radio-quiet pulsars in the current pulsar population.

Although the 41 pulsars found in previous blind gamma-ray searches represent a small fraction of the total pulsar population, this increasing population forms a very distinct group with extremely faint or undetectable radio emission. Besides the possible detections of J1732–3131 (Maan et al. 2012) and Geminga (Maan 2015), only four gamma-ray-discovered pulsars have also been detected in radio, two of them being radio-loud (we follow the convention used in 2PC, i.e., pulsars are considered radio-quiet if their radio flux densities at 1400 MHz, S_{1400} , are smaller than $30 \mu\text{Jy}$), J1741–2054 and J2032+4127 (Camilo et al. 2009), and the remaining two, J0106+4855 (Pletsch et al. 2012a) and J1907+0602 (Abdo et al. 2010), being considered radio-quiet.

To further increase the number of known gamma-ray pulsars, a new blind search of unidentified LAT sources with gamma-ray emission properties resembling known pulsars was initiated. This search has been conducted on the distributed volunteer computing system Einstein@Home¹⁹ using the newly improved Pass 8 LAT data. This data set provides a number of improvements such as better energy reconstruction and better background rejection (see Atwood et al. 2013), therefore increasing its sensitivity.

Based on their gamma-ray properties, we have selected and searched 118 unassociated LAT sources, resulting in the discovery of 17 pulsars. The results of this search are presented in two papers: Clark et al. (2017, hereafter Paper I) focused on the search method, sensitivity, and temporal characteristics of the recent pulsar discoveries. In this second paper, we present the source selection scheme, the data preparation process, and detailed gamma-ray analyses and radio follow-up observations of the discoveries. In Section 2, we describe the method used for selecting gamma-ray sources for the blind search. Section 3 describes the analysis procedure we followed for preparing the gamma-ray data to be searched for pulsars. Gamma-ray, X-ray, and radio follow-up analyses of the newly discovered pulsars are described in Section 4, and we conclude with a discussion of the properties of the new pulsars.

2. Source Selection

2.1. 3FGL Catalog

The third catalog of LAT sources (hereafter 3FGL; Acero et al. 2015) lists the properties of 3033 gamma-ray sources detected by the LAT in the first 4 yr of data taking. More than 30% of the 3FGL sources were unassociated at the time of publication. More than 100 of these unassociated sources have been demonstrated to be previously unknown pulsars, discovered either in deep targeted radio observations or in blind searches using the LAT data. Due to the observing time and processing resources required for a timing search, identifying which of these sources are most likely to be pulsars has become a task of paramount importance. In contrast to several other classes of gamma-ray sources, pulsars have significant cutoffs in their emission spectra at energies of a few

GeV and gamma-ray fluxes that are generally very stable (however, see Allafort et al. 2013, for a counterexample); hence, the curvature significance²⁰ (“Signif_Curve”, S_c) and the variability index²¹ (“Variability_Index”, VI), which are respectively measures of the curvature of a source’s spectrum and of its gamma-ray flux variability, have been successfully applied in previous similar surveys (e.g., Pletsch et al. 2012a).

We note that only a preliminary version of the 3FGL catalog was available when our survey was initiated. We therefore assessed the pulsar likelihood of the unassociated sources from this preliminary catalog. As a cross-check of our source selection results, we have compared the data from the preliminary catalog with those from 3FGL, finding differences in one specific parameter only. These differences are discussed in the next section.

2.2. Pulsar Candidate Selection

Although using S_c and the VI seems to be enough to identify pulsar candidates, extra care needs to be taken, as these two parameters are correlated with the detection significance. A number of groups have developed different schemes for classifying sources, involving machine-learning techniques (Lee et al. 2012; Mirabal et al. 2012; Saz Parkinson et al. 2016). In particular, Lee et al. (2012) have shown that including the gamma-ray flux as a third dimension in the pulsar classification scheme can directly correct the above-mentioned correlation. Applying the Gaussian Mixture Model (GMM) classification scheme from Lee et al. (2012), we used the VI, S_c , and F_{1000} (gamma-ray flux above 1 GeV) parameters from the catalog to calculate the pulsar likelihood R_s for all the sources. A positive $\log R_s$ indicates that the source is likely to be a pulsar (see Lee et al. 2012, for a detailed discussion). A list of 341 sources with positive logarithmic pulsar likelihood ($\log R_s$) values and no firm associations with any other astrophysical sources was obtained.

As mentioned in Section 2.1, the list of pulsar candidates was produced by analyzing a preliminary version of the 3FGL catalog. We verified that the characteristics of most of the sources from the preliminary catalog are identical to those from the final catalog. One difference concerns the definition of the spectral curvature Test Statistic (TS), TS_{curve} , listed instead of the curvature significance in the preliminary version of the catalog, $S_c = \sqrt{\text{TS}_{\text{curve}} \times R_{\text{sys}}}$, where R_{sys} accounts for systematic uncertainties in the effective area. We verified that using TS_{curve} instead of S_c as one of the inputs of the GMM does not affect our classification results.

3. Data Preparation

3.1. The Spectral Analysis Pipeline

One of the main difficulties in blind searches for gamma-ray pulsars is separating background emission from photons originating from the sources of interest. Due to the wide and energy-dependent point-spread function of the LAT at low energies,²² neighboring sources within a few degrees of a given direction can

²⁰ Significance (in σ units) of the fit improvement when assuming a curved spectral type (e.g., PLEC; see Section 3.1) instead of a simple power law for the source of interest. Values greater than 4 indicate significant curvature.

²¹ Index quantifying the variability of a source on a timescale of months. An index larger than 72.44 corresponds to a >99% confidence probability that the source of interest has a variable flux.

²² https://www.slac.stanford.edu/exp/glast/groups/canda/lat_Performance.htm

¹⁹ <https://einsteinathome.org>

raise the background level in the data set considered for the search. In the past, blind searches often adopted a so-called “cookie cutter” to select photons and increase the signal-to-noise ratio, i.e., they restricted the region of interest (ROI) by selecting events with reconstructed directions found within, say, $\sim 1^\circ$ of the considered sky location. Although this technique can efficiently separate source and background photons for some bright pulsars or pulsars in regions of low background contamination, most of the young gamma-ray pulsars are located near the Galactic plane, where the diffuse background emission is strong and where the effectiveness of the cookie cutter selection method decreases. Kerr (2011) mitigated this problem by proposing a photon-weighting technique, which uses information about the spectrum of the targeted source and the instrumental response of the LAT. Probabilities that photons originate from the source can then be calculated, relaxing the need to select narrow sky regions and greatly improving our sensitivity to weak periodic signals.

Consequently, accurately determining the spectra of the sources we want to search for pulsations is key for calculating photon weights and thereby increasing the signal-to-noise ratio. We assembled a spectral analysis pipeline based on the `Pointlike` analysis package (Kerr 2010), allowing us to derive the spectral parameters of the search targets and to assign good photon weights for the selected data sets. We initially considered LAT data recorded between 2008 August 4 and 2014 April 6 for our survey and included photons recorded until 2015 July 7 after a few tens of sources had been searched (see Section 3.2). We used the *Fermi* Science Tools²³ to extract Pass 8 Source class events, processed with the `P8_SOURCE_V3` instrument response functions (IRFs). The Science Tools, IRFs, and models for the Galactic and extragalactic diffuse gamma-ray emission used here are internal pre-release versions of the Pass 8 data analysis, which were the latest versions available to us when the survey began. The differences in the best-fit parameters are marginal, compared to the analysis with the most recent IRFs. Therefore, the weights as calculated with the old IRFs are also very similar. Specifications of follow-up data analyses are given in Section 4. We used `gtselect` to select photons with reconstructed directions within 8° of the 3FGL positions, photon energies > 100 MeV, and zenith angles $< 100^\circ$. We only included photons detected when the LAT was operating in normal science mode and when the rocking angle of the spacecraft was less than 52° . Photons were then binned into 30 logarithmically spaced energy bins, with a spatial bin size of 0.1° .

For each 3FGL target, a spectral model for the sources within the corresponding ROIs was constructed by including all 3FGL sources within 13° . Spectral parameters of point sources within 5° were allowed to vary. A binned maximum likelihood analysis was performed to measure the gamma-ray spectra of the targeted sources, which were modeled with exponentially cutoff power laws (“PLEC” spectral shapes) of the form

$$\frac{dN}{dE} = K \left(\frac{E}{1 \text{ GeV}} \right)^{-\Gamma} \exp \left(-\frac{E}{E_{\text{cut}}} \right), \quad (1)$$

where K is a normalization factor, E_{cut} is the cutoff energy, and Γ is the photon index. The above expression accurately reproduces the phase-averaged spectral properties of the majority of known gamma-ray pulsars (see, e.g., 2PC). The

normalization parameters of the Galactic diffuse emission and the isotropic diffuse background components were left free in the fits. The best-fit source models from the likelihood analysis with `Pointlike` were used as inputs for `gtsrcprob`, to determine the probabilities that the selected photons were indeed emitted by our targets.

In order to verify the goodness of the fits and check for possible issues in the likelihood results, we produced source significance TS maps and plots of the spectral energy distribution (SED) for each analyzed source. For some of the sources, the best-fit cutoff energies were suspiciously high and were in particular much higher than those of known gamma-ray pulsars. These sources have spectra with low curvature and could potentially be associated with supernova remnants (SNRs) or pulsar wind nebulae (PWNe), which are known to have harder spectra than pulsars. For some sources a very high cutoff energy close to the upper bound of 1 TeV used for the fit was found, suggesting low spectral curvature. In some cases the best-fit photon index Γ was close to 0. These low photon indices were found for sources with low TS values. We flagged these problematic sources, but we included them in the survey despite the abnormal spectral results since we may still be able to detect pulsations from these sources. We note that SEDs for the latter sources were generally consistent with 3FGL results. In addition, for a small number of 3FGL sources our analysis failed to converge, possibly because of complicated sky regions. Those sources were removed from the target list and will be revisited in the future. As a result, the original target list was trimmed down to 118 sources, which are listed in Table 1.

We eventually obtained data sets consisting of lists of photon arrival times to be searched for pulsations, photon weights, and spacecraft positions calculated at each photon time, which are necessary to correct the arrival times for Doppler shifts caused by the motion of the telescope with respect to the sources. These data sets were then passed to the blind search algorithm, for searching for new pulsars among our target sources.

3.2. Relocalization

Following the first few discoveries (summarized in Section 3.3), we noticed that the timing positions of a few pulsars (see Paper I for the timing positions of the discovered pulsars) were well outside the 95% confidence regions from the 3FGL catalog. The observed discrepancies could be caused by the fact that 3FGL catalog positions were determined using 4 yr of Pass 7 reprocessed data, while we used 5.5 yr of Pass 8 data, which have higher angular resolution. To mitigate this discrepancy, we relocalized the sources using `Pointlike`, by varying the sky coordinates of the sources until the maximum likelihood was found. The results of the relocalization analysis for the new pulsars are given in Table 2.

In most cases, the relocalized positions are closer to the pulsar timing positions than the catalog ones. In addition, the 95% semimajor axes of the relocalized positions are smaller than in 3FGL. Although this implies a smaller number of trials in sky position for the blind search, leading to a greatly reduced overall computational cost, the true pulsar positions may still fall outside of the error ellipses. In some cases, the timing position is found to be out of both the 3FGL error ellipse and the ellipse from our analysis. From the 47th source onward, we therefore adopted the relocalized positions with three times the

²³ <http://fermi.gsfc.nasa.gov/ssc/data/analysis/software>

Table 1
Ranked Source List

3FGL Name	Searched R.A. (J2000)	Searched Decl. (J2000)	Search Radius (arcmin)	VI	TS _{curve}	TS _{cut}	E_{cut} (GeV)	Γ	TS	log R_S	Class
J1745.3–2903c	17:45:22.32	–29:03:46.80	2.05	48.42	275.2	378.7	2.2	1.4	3407	18.85	...
J1746.3–2851c	17:46:22.51	–28:51:45.72	2.12	57.06	113.0	364.7	4.0	1.5	2373	14.31	pwn
J2017.9+3627	20:17:56.33	+36:27:32.76	3.10	39.86	179.3	198.9	1.9	1.4	1876	13.61	...
J1839.3–0552 [†]	18:39:23.52	–05:52:53.76	3.07	37.43	83.7	135.1	2.3	1.2	714	13.26	...
J1906.6+0720 [†]	19:06:41.14	+07:20:02.04	3.33	41.70	87.9	68.6	7.0	2.0	1580	12.51	...
J1910.9+0906 [†]	19:10:58.61	+09:06:01.80	1.55	52.13	53.2	17.4	41.7	2.1	4790	12.31	snr
J1636.2–4734 [†]	16:36:16.49	–47:34:49.08	4.58	54.63	106.0	47.1	7.1	1.9	1180	12.28	snr
J1848.4–0141	18:48:28.39	–01:41:33.72	7.27	52.63	109.0	13.8	9.8	2.5	1457	11.81	...
J1405.4–6119 [†]	14:05:25.46	–61:19:00.48	2.83	43.93	61.1	19.7	8.2	2.1	1671	11.39	...
J1111.9–6038 [†]	11:11:58.44	–60:38:27.96	1.96	46.69	81.4	58.5	10.4	1.9	3624	11.36	spp
J1748.3–2815c	17:48:22.20	–28:15:32.04	2.73	34.06	77.4	68.6	4.7	1.4	489	11.26	...
J1622.9–5004 [†]	16:22:54.31	–50:04:31.08	2.17	54.35	72.4	73.3	8.0	1.6	891	10.21	...
J0223.6+6204 [†]	02:23:37.46	+62:04:51.96	3.51	41.77	86.3	182.6	1.8	1.5	1089	9.78	...
J1823.2–1339 [†]	18:23:16.90	–13:39:04.68	2.60	47.54	29.7	47.4	9.0	1.9	1004	9.72	...
J1745.1–3011	17:45:11.30	–30:11:57.84	6.17	59.68	92.7	88.8	0.6	0.4	459	9.69	spp
J1800.8–2402 [†]	18:00:53.18	–24:02:06.36	3.13	46.65	36.4	21.3	11.3	1.7	575	9.69	...
J1749.2–2911	17:49:15.58	–29:11:34.44	7.21	41.77	50.9	43.6	1.6	1.3	265	9.62	...
J1306.4–6043 [†]	13:06:27.50	–60:43:54.12	2.48	35.69	65.9	42.6	8.6	1.7	1108	9.59	...
J1104.9–6036 [†]	11:04:59.42	–60:36:32.76	4.10	43.09	77.4	64.6	3.6	1.7	769	9.42	...
J0634.1+0424	06:34:06.79	+04:24:22.32	9.77	42.87	123.3	60.2	1.8	2.2	1421	9.41	...
J1552.8–5330	15:52:50.90	–53:30:47.16	6.98	46.44	56.6	50.3	1.8	1.0	210	9.26	...
J1747.0–2828 [†]	17:47:05.98	–28:28:54.84	3.65	90.61	159.7	135.3	2.5	1.8	1676	9.22	...
J1650.3–4600	16:50:23.76	–46:00:50.76	3.14	55.06	54.6	55.0	4.8	1.8	897	9.19	...
J2323.4+5849	23:23:28.85	+58:49:09.48	1.49	40.07	62.4	39.1	26.4	1.6	2568	9.17	snr
J1625.1–0021 [†]	16:25:07.06	–00:21:30.96	3.38	37.31	104.3	201.4	1.9	0.8	1778	8.98	...
J1714.5–3832	17:14:34.27	–38:32:55.68	2.65	68.77	39.3	23.3	14.7	2.2	2649	8.95	snr
J1857.9+0210 [†]	18:57:57.65	+02:10:13.44	5.41	50.62	42.8	50.5	3.2	1.9	601	8.89	...
J1056.7–5853	10:56:42.86	–58:53:45.60	7.77	35.71	88.2	126.1	1.1	1.5	596	8.83	...
J1026.2–5730	10:26:14.33	–57:30:59.76	4.85	50.42	54.7	58.1	2.3	1.6	493	8.26	...
J1742.6–3321	17:42:39.60	–33:21:22.32	6.00	48.24	67.1	24.4	2.5	1.8	411	8.20	...
J1844.3–0344 [†]	18:44:23.93	–03:44:48.48	5.09	44.78	37.0	70.9	1.9	0.8	468	8.12	...
J1101.9–6053	11:01:55.46	–60:53:45.96	7.49	23.32	40.8	61.3	2.4	1.8	519	7.95	spp
J2038.4+4212	20:38:29.95	+42:12:30.60	5.30	45.67	51.1	95.8	0.5	0.6	340	7.92	...
J1849.4–0057	18:49:25.30	–00:57:06.48	3.55	45.11	23.8	16.6	13.5	2.0	674	7.86	snr
J1112.0–6135	11:12:04.03	–61:35:03.12	8.87	55.72	84.6	35.8	1.7	1.7	293	7.84	...
J1754.0–2538	17:54:02.02	–25:38:54.96	2.62	66.89	72.4	107.3	4.0	1.0	500	7.73	...
J0854.8–4503 [†]	08:54:50.59	–45:03:41.76	4.37	44.94	47.5	54.9	5.0	1.7	737	7.68	...
J1857.2+0059	18:57:14.28	+00:59:10.68	3.82	57.14	32.6	113.2	4.5	1.3	383	7.67	...
J1740.5–2843	17:40:30.00	–28:43:01.20	5.87	46.42	25.6	24.2	3.6	2.2	700	7.66	...
J1744.1–7619 [†]	17:44:10.85	–76:19:42.96	3.12	51.73	112.5	169.2	2.1	1.2	1759	7.61	...
J1035.7–6720 [†]	10:35:42.24	–67:20:00.60	3.34	47.01	80.6	120.2	2.3	1.4	1336	7.39	...
J1843.7–0322	18:43:42.77	–03:22:37.92	7.67	70.63	65.5	54.5	3.7	2.6	1113	7.37	...
J0359.5+5413 [†]	03:59:31.46	+54:13:19.20	3.66	33.63	42.2	84.1	2.6	1.6	800	7.19	...
J1624.2–4041 [†]	16:24:14.26	–40:41:11.40	4.02	50.80	58.8	74.2	2.8	1.6	945	7.18	...
J1740.5–2726	17:40:32.28	–27:27:00.00	8.30	43.15	39.9	31.1	1.8	2.0	401	7.04	...
J1827.3–1446	18:27:20.16	–14:46:01.92	5.54	40.00	18.2	83.5	2.5	1.4	483	6.96	...
J2032.5+3921	20:32:29.78	+39:25:20.60	3.69	49.41	46.2	34.1	0.4	0.8	233	6.95	...
J1638.6–4654	16:38:40.16	–46:54:06.33	2.24	77.58	48.0	46.8	3.7	1.8	614	6.84	spp
J1925.4+1727	19:24:58.98	+17:24:41.84	7.38	47.33	42.2	22.3	1.2	1.2	157	6.70	...
J1857.9+0355	18:58:03.73	+03:55:08.04	3.45	55.58	31.5	29.6	1.6	1.1	146	6.55	...
J1208.4–6239 [†]	12:08:26.89	–62:39:26.13	1.56	64.44	39.2	52.0	4.9	1.8	874	6.43	...
J1350.4–6224 [†]	13:50:34.69	–62:23:43.53	1.71	58.24	41.3	90.8	2.4	0.7	357	6.41	...
J1037.9–5843*	10:38:01.49	–58:44:20.62	4.29	38.88	24.9	163.9	0.4	0.0	391	6.32	...
J2112.5–3044 [†]	21:12:32.39	–30:43:58.53	1.39	51.84	69.0	151.0	2.8	1.1	1805	6.25	...
J1636.2–4709c	16:36:22.32	–47:09:53.05	4.41	57.44	13.7	4.4	...	2.3	541	6.17	spp
J1358.5–6025	13:58:24.20	–60:25:30.56	2.44	53.16	32.8	21.1	5.7	2.2	639	6.15	...
J1048.2–5928	10:48:40.66	–59:26:03.43	3.98	65.78	101.1	60.4	1.5	1.4	381	6.11	...
J2034.6+4302	20:34:58.42	+43:05:08.99	6.30	41.40	50.7	112.7	0.4	0.3	324	6.11	...
J1754.0–2930 [†]	17:54:14.33	–29:32:08.04	3.72	59.67	49.8	38.4	2.2	2.0	498	6.06	...
J1214.0–6236 [†]	12:14:10.04	–62:36:16.69	1.98	58.02	20.3	15.7	13.1	2.2	789	6.05	spp
J1652.8–4351	16:52:32.63	–43:56:50.10	6.40	64.55	31.0	62.0	1.3	0.9	184	6.00	...
J1317.6–6315	13:17:35.62	–63:17:18.00	2.96	50.53	25.0	37.0	2.7	1.7	347	5.99	...
J2039.4+4111	20:39:45.84	+41:09:34.39	3.61	45.39	48.2	98.1	0.3	0.3	249	5.91	...
J1852.8+0158*	18:52:27.92	+02:01:37.54	4.17	54.52	12.1	0.2	...	2.8	838	5.89	...
J0631.6+0644	06:31:49.76	+06:44:46.66	1.93	43.04	26.6	37.2	4.6	1.6	676	5.84	spp
J1840.1–0412*	18:40:06.15	–04:11:35.22	2.95	30.14	15.9	0.0	...	2.5	416	5.83	spp
J1928.9+1739	19:29:02.93	+17:34:58.90	9.16	47.86	26.9	12.0	3.6	2.1	235	5.79	...
J0225.8+6159	02:26:20.37	+62:00:10.48	3.49	46.69	28.8	29.7	2.2	1.7	473	5.77	...
J0002.6+6218 [†]	00:02:48.88	+62:16:54.71	2.25	48.02	58.0	80.3	1.8	1.5	716	5.76	...
J1740.5–2642	17:40:41.52	–26:39:52.98	4.29	33.42	23.2	34.1	2.5	1.8	222	5.74	...

Table 1
(Continued)

3FGL Name	Searched R.A. (J2000)	Searched Decl. (J2000)	Search Radius (arcmin)	VI	TS _{curve}	TS _{cut}	E_{cut} (GeV)	Γ	TS	log R_S	Class
J1834.5–0841*	18:34:31.66	–08:40:15.75	4.02	57.10	0.5	0.1	...	2.2	287	5.72	snr
J2042.4+4209	20:42:39.77	+42:09:19.64	11.48	49.90	27.1	27.4	0.5	1.0	185	5.68	...
J1814.0–1757c	18:13:24.52	–17:53:55.97	5.83	56.91	8.8	7.4	...	2.3	662	5.59	...
J2041.1+4736†	20:41:08.34	+47:35:50.81	2.01	56.28	38.0	15.9	10.3	2.3	967	5.53	...
J1047.3–6005	10:47:21.66	–60:05:11.01	6.22	49.04	22.3	16.4	3.0	1.5	115	5.52	...
J2039.6–5618	20:39:36.25	–56:17:12.94	1.82	34.60	30.4	60.3	3.9	1.6	1266	5.47	...
J1900.8+0337	19:00:37.96	+03:39:10.57	3.94	45.87	44.9	4.7	...	2.3	186	5.42	...
J0855.4–4818	08:55:18.44	–48:14:13.02	10.69	33.84	53.0	66.4	0.5	0.9	288	5.39	...
J1747.7–2904	17:47:51.94	–29:01:49.54	2.95	65.34	10.3	124.7	7.1	2.2	666	5.37	...
J0541.1+3553	05:40:47.47	+35:54:40.72	8.53	35.17	37.3	33.0	1.8	1.9	329	5.34	...
J1549.1–5347c*	15:48:38.12	–53:44:00.33	5.02	51.64	10.9	0.1	...	2.9	1172	5.27	spp
J1039.1–5809	10:38:25.85	–58:08:23.45	13.63	37.46	24.7	23.4	1.7	1.3	107	5.23	...
J1831.7–0230	18:31:33.96	–02:31:25.54	5.83	31.11	17.8	2.1	...	2.7	421	5.23	...
J1702.8–5656†	17:02:45.00	–56:54:39.46	1.88	58.78	46.9	53.1	3.4	2.1	1917	5.19	...
J1736.0–2701*	17:36:07.44	–27:03:29.55	6.88	38.45	25.2	23.7	0.3	0.0	80	5.18	...
J2023.5+4126*	20:23:24.65	+41:27:31.08	4.35	48.95	78.1	36.7	0.4	0.0	93	5.12	...
J1758.8–2346	17:59:09.58	–23:47:19.28	3.69	41.80	11.8	5.4	...	1.9	218	5.01	...
J2004.4+3338*	20:04:22.03	+33:39:29.46	1.47	50.29	13.5	0.0	...	2.4	708	5.01	...
J0212.1+5320	02:12:12.29	+53:20:49.61	1.58	51.47	45.9	82.0	3.3	1.5	1442	5.01	...
J1901.1+0728	19:01:09.32	+07:30:01.23	3.29	55.34	25.8	10.5	6.6	2.0	134	4.88	...
J1503.5–5801	15:03:39.92	–58:00:43.22	3.88	67.48	26.3	18.7	3.7	2.0	359	4.85	...
J1850.5–0024	18:50:31.56	–00:24:33.69	4.83	64.27	14.6	2.8	...	2.3	216	4.76	...
J0933.9–6232†	09:34:00.41	–62:32:57.43	1.77	59.20	88.0	125.9	2.0	0.8	907	4.73	...
J1620.0–5101	16:19:48.66	–51:00:57.34	4.03	50.48	9.7	1.0	...	2.1	121	4.72	...
J1726.6–3530c	17:26:32.27	–35:33:37.61	5.18	60.31	11.9	1.8	...	2.6	335	4.67	...
J1919.9+1407	19:20:11.19	+14:11:54.53	7.95	67.73	17.6	0.3	...	2.7	642	4.66	...
J1119.9–2204†	11:19:59.45	–22:04:25.17	1.80	62.62	103.2	156.9	1.7	1.3	1949	4.63	...
J0907.0–4802*	09:07:18.05	–47:58:38.32	10.11	40.75	29.3	28.0	0.4	0.2	123	4.58	...
J1718.0–3726	17:18:02.10	–37:26:50.06	1.02	41.58	1.5	2.0	...	2.1	593	4.55	snr
J1859.6+0102	18:59:39.72	+01:00:15.56	5.43	68.61	18.9	13.1	3.5	1.8	150	4.40	...
J2035.0+3634	20:35:02.11	+36:32:12.74	1.88	52.58	39.2	57.5	2.8	0.8	401	4.39	...
J1345.1–6224	13:44:43.61	–62:28:30.64	5.12	58.30	12.8	1.3	...	2.7	568	4.39	spp
J0744.1–2523	07:44:06.64	–25:25:17.47	1.97	61.34	40.9	55.3	3.2	1.8	666	4.27	...
J0426.7+5437	04:26:33.79	+54:35:00.35	3.01	51.83	63.9	59.0	1.7	2.1	1235	4.27	...
J1539.2–3324†	15:39:20.23	–33:24:56.62	1.64	57.87	102.9	129.3	2.3	0.4	694	4.22	...
J1641.1–4619c*	16:41:00.45	–46:19:46.25	1.87	39.43	0.7	0.2	...	2.3	292	4.15	spp
J1528.3–5836	15:28:23.37	–58:38:05.98	1.87	68.72	44.9	41.4	4.0	1.6	452	4.14	...
J1857.9+0355	18:58:03.73	+03:55:08.04	3.45	41.47	11.2	32.2	2.2	1.4	131	4.13	...
J1855.4+0454	18:55:12.72	+04:55:38.38	4.46	38.60	6.6	4.4	...	2.4	193	4.12	...
J1650.0–4438c*	16:49:48.42	–44:38:58.44	6.63	58.81	1.0	0.1	...	3.1	843	4.02	...
J0901.6–4700	09:01:40.90	–46:52:10.77	7.02	55.10	30.0	52.7	1.0	1.2	221	4.02	...
J1329.8–6109	13:29:57.92	–61:08:00.95	2.45	55.66	22.5	21.1	4.9	1.6	246	3.91	...
J1639.4–5146	16:39:25.17	–51:46:04.03	1.39	58.03	4.2	2.8	...	2.3	945	3.85	...
J1833.9–0711*	18:34:10.57	–07:11:34.47	3.12	82.07	1.6	0.4	...	2.3	482	3.85	spp
J1814.1–1734c	18:14:07.87	–17:36:39.99	2.96	50.07	7.1	5.3	...	1.4	83	3.73	...
J1139.0–6244	11:39:07.61	–62:46:04.02	2.31	29.45	7.5	16.5	8.6	1.9	278	3.71	...
J1626.2–2428c	16:26:25.40	–24:31:36.54	4.74	46.87	15.9	7.8	...	2.1	392	3.66	...
3FGL J1212.2–6251	12:12:18.06	–62:53:31.51	2.84	53.70	1.4	12.9	45.8	2.4	426	3.45	spp

Note. List of the 118 3FGL sources with $\log R_S > 0$ searched for gamma-ray pulsars using Einstein@Home, ranked by their probability to be pulsars according to the GMM analysis presented in Section 2.2. Sources marked with a † symbol were searched in a previous Einstein@Home & *Atlas* survey for gamma-ray pulsars. Sources for which suspiciously low or high cutoff energies were measured are marked with asterisks. We highlight in boldface the 3FGL sources in which pulsars were discovered in this survey. The discovery and analysis of PSR J1906+0722 and PSR J1208–6238 are presented in Clark et al. (2015, 2016), while PSR J1035–6720 and PSR J1744–7619 discovered in 3FGL J1035.7–6720 and 3FGL J1744.1–7619 will be presented in a future publication. The second, third, and fourth columns list the searched position and radius. The fifth and sixth columns give the variability index, VI, and curvature TS, TS_{curve}, from a preliminary version of the 3FGL catalog, respectively. The seventh through 10th columns give the TS of the spectral cutoff (TS_{cut}), the cutoff energy (E_{cut}), the photon index (Γ), and the source TS value from our binned maximum likelihood analysis with *Pointlike*, respectively; cutoff energies are listed for sources with TS_{cut} > 9. The 11th column lists the pulsar likelihood value from our GMM analysis. The 12th column lists association flags from the 3FGL catalog: “pwn” and “snr” labels indicate possible associations with PWNs and SNRs respectively; sources with class “spp” are special cases with potential PWN or SNR associations. Sources below the horizontal line were searched with relocalized positions, as mentioned in Section 3.2.

(This table is available in machine-readable form.)

1σ Gaussian uncertainty reported by *Pointlike* to obtain a more conservative sky coverage, and we also extended our data set by including photons recorded until 2015 July 7 when the relocalization was done. The inaccurate source locations might have resulted from the imperfect Galactic background model.

3.3. Search Summary

The blind search survey of the sources listed in the Appendix, described in detail in Paper I, enabled the discovery of 17 gamma-ray pulsars. Clark et al. (2015) reported on the discovery of PSR J1906+0722, an energetic pulsar with a spin frequency

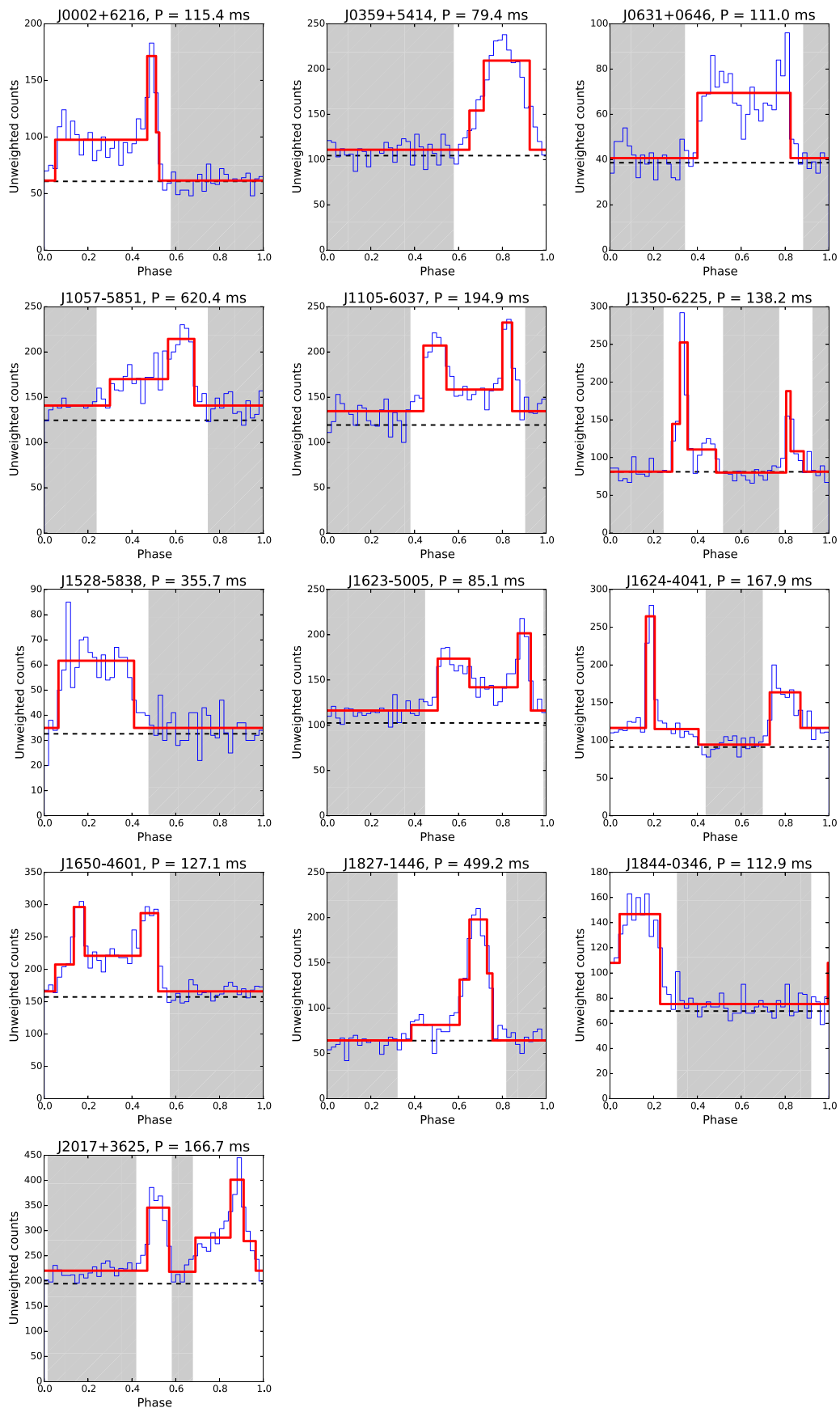


Figure 1. Results of the decomposition of gamma-ray pulse profiles into Bayesian blocks, as discussed in Section 4.1. Blue histograms represent the pulse profiles, red lines the Bayesian block decompositions, and shaded regions the off-pulse phase intervals determined from this analysis. Dashed black lines represent the estimated background levels, calculated as $B = \sum_i^N (1 - w_i)$, where w_i is the weight associated with photon i (Guillemot et al. 2012b).

of 8.9 Hz that suffered one of the largest glitches ever observed for a gamma-ray pulsar. Clark et al. (2016) later presented the discovery of PSR J1208–6238, a 2.3 Hz pulsar with a very high surface magnetic field and a measurable braking index of about 2.6. Paper I and the present paper report on 13 young, isolated gamma-ray pulsars also found in this survey. The new pulsars have rotational periods ranging from ~ 79 ms to 620 ms. They are all energetic, with spin-down powers between about 10^{34} and 4×10^{36} erg s $^{-1}$. Among these, PSR J1057–5851 and PSR J1827–1446 are the slowest rotators among currently known gamma-ray pulsars. PSR J1844–0346 experienced a very large glitch in mid-2012 (see Paper I for details). In the next sections we describe dedicated follow-up studies of these 13 pulsars. Finally, we note that two more pulsars were found in this survey: PSR J1035–6720 and PSR J1744–7619. These two pulsars will be presented in a separate publication (Clark et al. 2017).

4. Follow-up Analysis

4.1. Spectral Analysis

After selecting the 13 pulsars, we performed dedicated spectral analyses with extended data sets in order to characterize their spectral properties with extra sensitivity. We used updated Pass 8 (P8R2) event selections and updated IRFs for events recorded from 2008 August 4 until 2015 September 9. The sizes of the ROIs around each pulsar were extended to 15° to collect more gamma-ray photons for the follow-up analysis, and we selected photon energies >100 MeV and zenith angles $<90^\circ$. The more restrictive zenith angle cut was used to better reject events from the Earth’s limb in support of spectral analysis down to 100 MeV. In our dedicated spectral analyses we used the `gll_iem_v06.fits`²⁴ map cube and `iso_P8R2_SOURCE_V6_v06.txt`²⁵ template for modeling the Galactic diffuse emission and the isotropic diffuse background, to match with the current recommendations (Acero et al. 2016a). The numbers of point sources in the models were increased to include all 3FGL sources within 20° . The details of the timing analysis using these extended data sets, including the determination of timing and positional parameters, are presented in Paper I. For the spectral analysis of the 13 pulsars we used the positions obtained from pulsar timing. In order to further minimize contamination from the diffuse background or from neighboring sources, we restricted our data sets to the pulsed part of the pulse profiles. To determine the “on”- and “off”-pulse phase regions of the pulse profiles, we selected gamma-ray photons with weights above 0.05 and constructed unweighted pulse profiles, which we then analyzed with the Bayesian block decomposition method described by Scargle et al. (2013). Bayesian blocks represent a model of time series of events generated by an inhomogeneous Poisson process, involving a sequence of constant flux levels. This method is useful for discriminating random flux changes from real ones, but it is not a physical representation of the pulse profiles. The on- and off-pulse regions are shown in Figure 1. We selected photons in the on-pulse regions and performed spectral analyses of these restricted data sets. We determined the

significance of the spectral cutoff (TS_{cut}) by comparing the change in log-likelihood when using a simple power-law model for the spectra of the pulsars instead of assuming the PLEC model, as follows: $TS_{\text{cut}} = -2 \log \Delta \mathcal{L}$. The results of the spectral analysis of the on-pulse data are given in Table 3; the corresponding SEDs are displayed in Figure 2, and the best-fit cutoff energy and power-law index values are shown in Figure 3, along with those of 2PC pulsars.

To search for unpulsed magnetospheric pulsar emission or emission from a putative PWN associated with the pulsar, we conducted analyses of the off-pulse phases of the data sets. Point-like test sources were added to the spectral models at the locations of the pulsars, and the spectral properties of these sources were determined by running new likelihood analyses. We alternatively assumed a simple power-law model and a PLEC model for the test sources, in order to test for spectral curvature. Significant off-pulse emission was detected for PSR J1623–5005, PSR J1624–4041, and PSR J2017+3625, with evidence for spectral curvature suggestive of magnetospheric emission from the pulsars, as can be seen from Table 4. Such off-pulse pulsar emission is not atypical for known gamma-ray pulsars (see, e.g., 2PC); nevertheless, small, unmodeled spatial fluctuations in the bright diffuse background emission could also account for this emission. Detailed analyses with extended data sets and comparisons of the best-fit spectral parameters with those of other known gamma-ray pulsars with off-pulse emission are necessary to firmly establish PSR J1623–5005, PSR J1624–4041, and PSR J2017+3625 as pulsars exhibiting gamma-ray emission at all phases. The on-pulse emission was then refitted with the addition of sources detected in the off-pulse region scaled to the on-pulse interval with the normalization and spectral parameters fixed.

We characterized the pulse profiles displayed in Figure 5 of Paper I by fitting the weighted profiles to Gaussian or Lorentzian profiles, depending on which gave a higher log likelihood. The derived peak multiplicities and gamma-ray peak separations are reported in Table 5. Most of the new pulsars show double-peaked profiles, with well-separated components that are typical of young gamma-ray pulsar light curves (see 2PC). Two of the 13 newly discovered pulsars, PSR J0002+6216 and PSR J0631+1036, are detected in the radio band (see Section 4.2). For these pulsars we measured the phase offset between the radio peak and the first gamma-ray peak.

4.2. Radio Counterpart Searches

The new pulsars were searched for radio pulsations by reanalyzing archival observations from previous targeted radio surveys of *Fermi* LAT unassociated sources, or by conducting new dedicated observations. Because we have timing parameters for the new pulsars, the only parameter to search for when analyzing the radio observations is the dispersion measure (DM), a quantity representing the integrated column density of free electrons along the line of sight to the pulsars, causing radio waves to arrive at different times depending on the frequency. Radio observations were therefore folded at the periods determined from the gamma-ray timing (see Paper I) and searched in DM values only, resulting in a reduced number of trials compared to a typical radio pulsar search.

The list of telescopes and backends used is given in Table 6. For each observing configuration we give the gain G , the

²⁴ https://fermi.gsfc.nasa.gov/ssc/data/analysis/software/aux/gll_iem_v06.fits

²⁵ https://fermi.gsfc.nasa.gov/ssc/data/analysis/software/aux/iso_P8R2_SOURCE_V6_v06.txt

Table 2
Relocalization Results

PSR	3FGL Source	r_{95} (3FGL)	r_{95} (new)	$\Delta_{3\text{FGL}}$	Δ_{new}
J0002+6216	J0002.6+6218	3'6	2'0	2'7	1'3
J0359+5414	J0359.5+5413	2'4	1'8	1'8	0'6
J0631+0646	J0631.6+0644	2'8	1'8	4'1	1'6
J1057-5851	J1056.7-5853	5'2	2'5	4'4	2'9
J1105-6037	J1104.9-6036	2'7	1'5	0'7	0'8
J1350-6225	J1350.4-6224	2'4	1'6	2'0	2'3
J1528-5838	J1528.3-5836	3'3	1'7	1'7	0'1
J1623-5005	J1622.9-5004	1'5	1'0	1'7	1'5
J1624-4041	J1624.2-4041	2'7	1'6	0'9	1'4
J1650-4601	J1650.3-4600	2'1	1'3	1'0	0'9
J1827-1446	J1827.3-1446	3'7	1'6	1'2	0'7
J1844-0346	J1844.3-0344	3'4	1'6	2'8	2'3
J2017+3625	J2017.9+3627	2'1	1'2	2'4	0'9

Note. Results of the relocalization analysis discussed in Section 3.2. For each of the 13 new pulsars reported in Paper 1, the second column lists the name of the 3FGL source in which the pulsar was discovered. The third and fourth columns list the semimajor axis of the 3FGL source error ellipse at 95% confidence (r_{95}) and the semimajor axis value from our analysis, respectively. The r_{95} (new) values are based on statistical uncertainties only. The fifth and sixth columns list the offset between pulsar timing positions and 3FGL positions ($\Delta_{3\text{FGL}}$) and the offset between pulsar timing positions and new positions (Δ_{new}), respectively.

central frequency, the frequency bandwidth ΔF , the sensitivity degradation factor β , the number of polarizations n_p , the half-width at half-maximum of the radio beam (HWHM), and the receiver temperature T_{rec} . Table 7 lists the radio observations processed in our follow-up study. Sensitivities were calculated using the modified radiometer equation given in Lorimer & Kramer (2005):

$$S_{\text{min}} = \beta \frac{5T_{\text{sys}}}{G\sqrt{n_p t_{\text{int}} \Delta F}} \sqrt{\frac{W}{P - W}}, \quad (2)$$

where a value of 5 is assumed for the threshold signal-to-noise ratio for a detection, $T_{\text{sys}} = T_{\text{rec}} + T_{\text{sky}}$, t_{int} is the integration time, P is the rotational period, and W is the pulse width, assumed to be $0.1 \times P$. The quantity T_{sky} is the temperature from the Galactic synchrotron component, estimated by scaling the 408 MHz map of Haslam et al. (1982) to the observing frequency, assuming a spectral index of -2.6 . For some observations the pointing direction was offset from the actual sky location of the pulsar. In those cases the flux density limit S_{min} as calculated using Equation (2) was divided by $e^{-(\theta/\text{HWHM})^2/1.5}$, where θ is the offset. For the majority of pulsars we failed to detect pulsations in the radio data and placed limits on their radio flux densities.

For two pulsars, PSR J0002+6216 and PSR J0631+0646, the analysis resulted in the detection of significant radio pulsations. PSR J0002+6216 was detected in a 2 hr observation conducted at 1.4 GHz with the Effelsberg radio telescope, with a DM of 218.6(6) pc cm $^{-3}$. PSR J0631+0636 was detected with Arecibo at 327 MHz and at 1.4 GHz in ~ 70 -minute observations and was also seen with Effelsberg at 1.4 GHz during a 2 hr follow-up observation. The best determined DM value from the Arecibo 327 MHz observation was 195.2(2) pc cm $^{-3}$. Phase-aligned radio and gamma-ray

pulse profiles for PSR J0002+6216 and PSR J0631+0646 are displayed in Figure 4. In both cases the gamma-ray emission is seen to lag the weak radio emission, as commonly observed in other radio and gamma-ray pulsars, and suggesting that radio and gamma-ray emissions have different magnetospheric origins (see, e.g., 2PC).

4.3. Pulse Profile Modeling

Using photons selected within 5° radius around the pulsars, we constructed weighted counts pulse profiles with 90, 60, or 30 bins if the weighted H-test TS, the statistical test for pulsation significance (de Jager et al. 1989), for a given pulsar was ≥ 1000 , between 100 and 1000, or < 100 , respectively. For PSR J0002+6216 and PSR J0631+0646 with radio detections, we rebinned the radio pulse profiles to have the same number of bins as the corresponding gamma-ray profile. We performed likelihood fits, minimizing $-\ln \mathcal{L}$, where \mathcal{L} is the likelihood value, of the gamma-ray pulse profile or the combination of the radio and gamma-ray pulse profiles, of all 13 pulsars using the geometric simulations and fitting technique of Johnson et al. (2014).

Following Clark et al. (2016), we used simulations with $P = 100$ ms and $\dot{P} = 10^{-15}$ s s $^{-1}$ and constructed likelihood values using a χ^2 statistic. Each pulsar was fit using the outer gap (OG, e.g., Cheng et al. 1986) and the slot gap (e.g., Muslimov & Harding 2003, 2004) models, where we used the two-pole caustic model (TPC; Dyks & Rudak 2003) as a geometric representation of the slot gap. For both models we use the vacuum retarded dipole solution for the magnetic field geometry (Deutsch 1955). The simulations were produced with 1° resolution in both the magnetic inclination angle (α) and observer angle (ζ) and a resolution of 1% of the polar cap opening angle in emitting and accelerating gap widths. For radio simulations, we assumed a frequency of 1400 MHz with the conal geometry and emission altitude of Story et al. (2007).

The best-fit results for all but PSR J0631+0646 are given in Table 8; estimated uncertainties are quoted at the 95% confidence level, but note that systematic error estimates from the fitting method (see Johnson et al. 2014) and/or from fitting only the gamma-ray profiles (Pierbattista et al. 2015) could be as large as 10° . Johnson et al. (2014) noted that it was necessary to renormalize the $\Delta \ln \mathcal{L}$ surface, making the best fit approximately correspond to a reduced χ^2 value of 1, in order to have more realistic confidence contours. In some cases, however, we found that this renormalization was unnecessary, either having no effect on the estimated uncertainties or shrinking them. We denote the pulsars for which we did not renormalize the likelihood surface with a † in the first column of Table 8. For each model, we also estimated the beaming fraction f_Ω (as defined, e.g., in Watters et al. 2009; Venter et al. 2009) for the best-fit geometry, used when calculating the gamma-ray luminosity.

For each pulsar with no radio detection, we examined the simulated radio sky map at 1400 MHz, and evaluated the model predictions for the best-fit geometry, in regard to expected radio-loudness; the predictions are indicated in the sixth and 11th columns of Table 8. The model predictions are “L” for radio-loud, meaning that the predicted geometry has the radio cone clearly and strongly intersecting our line of sight; “F” for radio-faint, meaning the predicted geometry has our line of sight either narrowly missing the cone or clipping the very edge, suggesting that only weak emission would be detected;

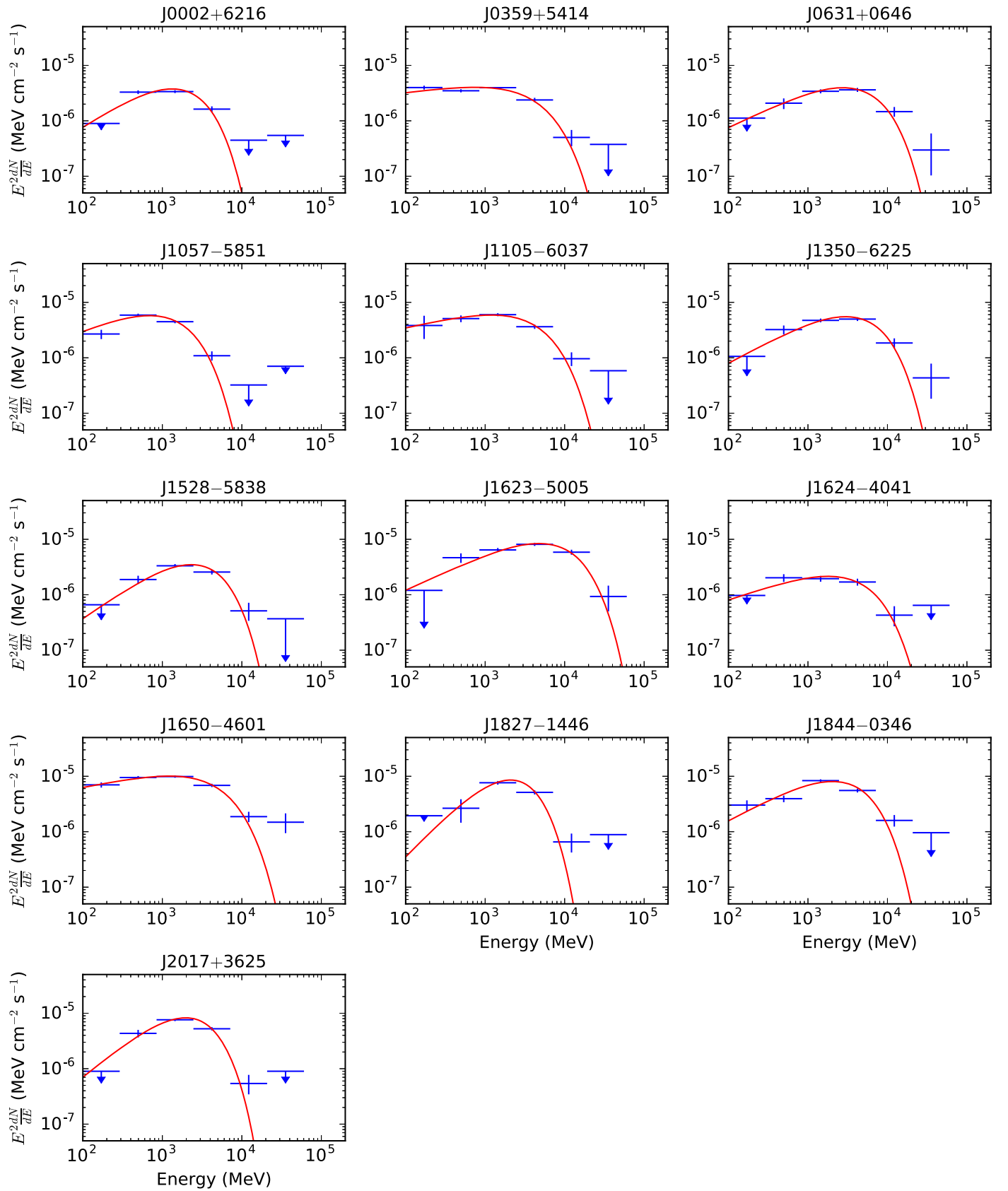


Figure 2. SEDs for the 13 Einstein@Home pulsars presented in this paper. The best-fit spectral models obtained by analyzing the full energy range are shown as red lines. The 95% confidence upper limits are calculated for energy bins with TS values below 4.

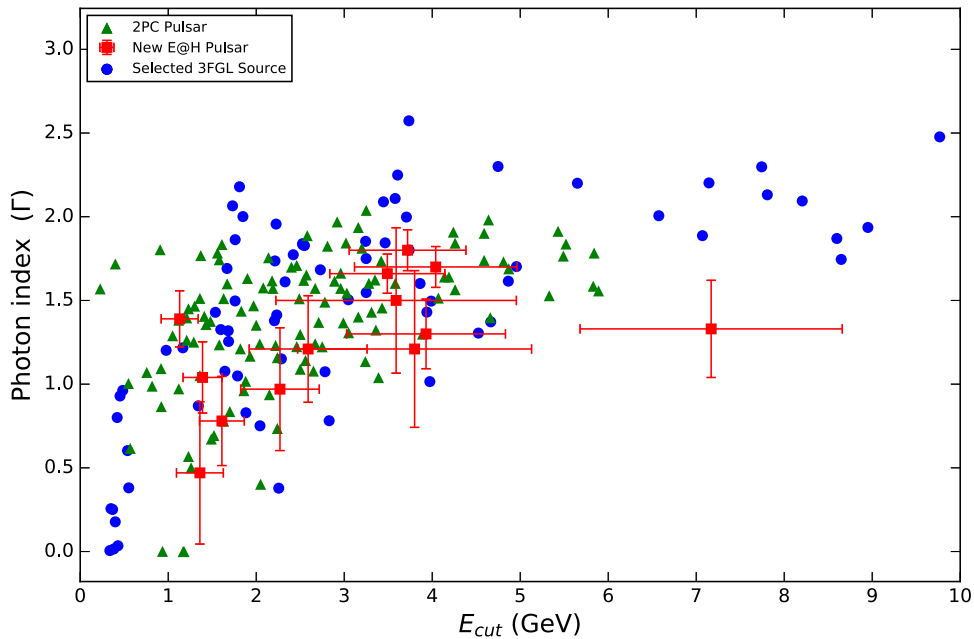


Figure 3. Best-fit power-law index Γ vs. cutoff energy E_{cut} for the new pulsars (red squares), other selected 3FGL sources that were searched in our survey (blue circles), and known gamma-ray pulsars from 2PC (green triangles). 3FGL sources with cutoff energies above 10 GeV are not plotted and uncertainties are not displayed, to improve readability.

Table 3
On-pulse Spectral Parameters

PSR	TS	TS _{cut}	Γ	E_{cut} (GeV)	Photon Flux, F_{100} (10^{-8} ph cm $^{-2}$ s $^{-1}$)	Energy Flux, G_{100} (10^{-11} erg cm $^{-2}$ s $^{-1}$)
J0002+6216	975	145	$1.04 \pm 0.16 \pm 0.14$	$1.39 \pm 0.21 \pm 0.07$	$2.8 \pm 0.3 \pm 0.8$	$2.6 \pm 0.2 \pm 0.4$
J0359+5414	1610	93	$1.80 \pm 0.07 \pm 0.10$	$3.72 \pm 0.61 \pm 0.26$	$8.4 \pm 0.6 \pm 2.0$	$5.6 \pm 0.2 \pm 0.8$
J0631+0646	881	81	$1.30 \pm 0.17 \pm 0.12$	$3.93 \pm 0.84 \pm 0.33$	$2.9 \pm 0.6 \pm 0.6$	$3.7 \pm 0.3 \pm 0.3$
J1057–5851	813	123	$1.39 \pm 0.16 \pm 0.05$	$1.13 \pm 0.19 \pm 0.09$	$7.9 \pm 0.9 \pm 0.8$	$5.0 \pm 0.3 \pm 0.5$
J1105–6037	1084	94	$1.66 \pm 0.11 \pm 0.04$	$3.49 \pm 0.60 \pm 0.26$	$8.3 \pm 1.2 \pm 0.4$	$6.4 \pm 0.5 \pm 0.4$
J1350–6225	704	85	$1.21 \pm 0.16 \pm 0.44$	$3.80 \pm 0.70 \pm 1.13$	$4.2 \pm 0.8 \pm 4.1$	$6.0 \pm 0.4 \pm 2.1$
J1528–5838	593	87	$0.97 \pm 0.07 \pm 0.36$	$2.27 \pm 0.12 \pm 0.43$	$2.2 \pm 0.5 \pm 1.3$	$3.0 \pm 0.3 \pm 0.7$
J1623–5005	854	106	$1.33 \pm 0.01 \pm 0.29$	$7.17 \pm 0.17 \pm 1.48$	$4.7 \pm 0.1 \pm 3.3$	$8.1 \pm 0.2 \pm 2.0$
J1624–4041	255	31	$1.50 \pm 0.21 \pm 0.38$	$3.59 \pm 1.07 \pm 0.85$	$1.6 \pm 0.8 \pm 0.9$	$1.6 \pm 0.5 \pm 0.5$
J1650–4601	1368	83	$1.70 \pm 0.10 \pm 0.07$	$4.04 \pm 0.71 \pm 0.59$	$15.9 \pm 1.4 \pm 4.6$	$12.3 \pm 0.6 \pm 2.3$
J1827–1446	818	134	$0.47 \pm 0.28 \pm 0.32$	$1.36 \pm 0.22 \pm 0.15$	$3.7 \pm 0.7 \pm 1.0$	$5.8 \pm 0.5 \pm 0.6$
J1844–0346	840	75	$1.21 \pm 0.22 \pm 0.23$	$2.59 \pm 0.53 \pm 0.41$	$8.3 \pm 1.9 \pm 2.6$	$9.5 \pm 0.9 \pm 1.5$
J2017+3625	1148	216	$0.78 \pm 0.15 \pm 0.22$	$1.61 \pm 0.18 \pm 0.18$	$4.7 \pm 1.3 \pm 1.3$	$6.2 \pm 1.1 \pm 1.2$

Note. Binned maximum likelihood spectral fit results for the 13 Einstein@Home gamma-ray pulsars. For each pulsar, the second and third columns list the TS of the source and the cutoff TS for the exponentially cutoff model over a simple power-law model, respectively. The fourth and fifth columns list the best-fit photon index Γ and cutoff energy E_{cut} , respectively. The next two columns give the on-pulse phase-averaged integral photon and energy fluxes in the 0.1–100 GeV band, F_{100} and G_{100} , scaled to full interval values. The first reported uncertainties are statistical, while the second uncertainties are systematic, determined by reanalyzing the data with bracketing IRFs and artificially changing the normalization of the Galactic diffuse model by $\pm 6\%$, as described in Acero et al. (2016b).

and “Q” for radio-quiet, meaning that the predicted geometry has our line of sight clearly missing the radio cone. The radio-faint sources are of particular interest, as searches at frequencies lower than 1400 MHz, where the cone is predicted to be larger (e.g., Story et al. 2007), may yield detections. Following Johnson et al. (2014), we conservatively consider one model to be significantly favored over another, for a given pulsar, if the $\ln \mathcal{L}$ value is greater by at least 15; however, in some cases the best-fit geometry for the TPC model clearly predicts a radio-loud pulsar where none has been detected, and we therefore claim that the OG model is favored, regardless of the $\Delta \ln \mathcal{L}$ value. In particular, this is the case for PSR J0359+5414, PSR J1528–5838, and PSR J1827–1446. For PSR

J1350–6225, both the TPC and OG models predict a radio-loud pulsar, with a near-orthogonal rotator viewed near the spin equator, either casting doubts on the models or raising questions concerning the nondetection. In modeling the “radio-quiet” pulsars in 2PC, Pierbattista et al. (2015) similarly found some solutions where the line of sight was near enough to the magnetic axis that we might expect to intersect the radio emission cone. These authors used a different fitting technique but similar simulations. This may further suggest that our results regarding the aforementioned pulsars point to issues with the models and not with the nondetections in radio.

Our joint gamma-ray and radio fits of PSR J0631+0646 did not produce acceptable results: the standard approach tended to

Table 4
Off-pulse Spectral Parameters

PSR	TS	TS _{cut}	Γ	E_{cut} (GeV)
J1623–5005	57	18	... ^a	$0.87 \pm 0.07 \pm 0.21$
J1624–4041	47	10	$1.02 \pm 0.95 \pm 0.96$	$1.33 \pm 1.23 \pm 0.41$
J2017+3625	215	88	$0.69 \pm 0.06 \pm 0.06$	$0.59 \pm 0.01 \pm 0.06$

Note. Results of the maximum likelihood analysis of the off-pulse phase ranges of pulsars with significant off-pulse emission, as discussed in Section 4.1. The first column lists the name of the pulsar. The remaining columns list the TS of the source in the off-pulse phase range, the test statistic TS_{cut} of an exponentially cutoff model over a simple power-law model, the photon index Γ , and the energy cutoff E_{cut} .

^a Although the spectral index is consistent with zero, the well-defined E_{cut} allows integration to a finite total flux.

ignore the radio data. Following Johnson et al. (2014), we decreased the radio uncertainty value in order to increase its importance in the likelihood, but this proved ineffective, leading to fits that ignored the gamma-ray data. Under the assumption that the difficulty was in matching the observed phase lag between the radio peak and the gamma-ray peaks, we followed Guillemot et al. (2013) in allowing the phase of the magnetic pole in the radio and gamma-ray simulations to be different by as much as 0.1 (following realistic simulations of the pulsar magnetosphere by Kalapotharakos et al. (2012), which suggested an offset of the low-altitude polar gap from the outer magnetosphere by up to this amount). These new fits were, similarly, unsatisfactory. We investigated relaxing the maximum phase offset condition and found more acceptable fits with offsets of ~ 0.3 in phase for both the TPC and OG models. The maximum phase offset of 0.1 is inferred from Kalapotharakos et al. (2012) by comparing predicted light curves from the vacuum retarded dipole geometry to models with increasing conductivity and finally full force-free models. It seems implausible that this offset could be a factor of 3 larger than predicted in the force-free simulations. With our different attempts to model the radio and gamma-ray profiles jointly being unsuccessful, we do not report modeling results for PSR J0631+0646 in Table 8. New approaches for modeling this pulsar’s emission geometry are needed. For instance, based on the work of Kalapotharakos et al. (2014), it is possible that gamma-ray emission from the current sheet outside the light cylinder could explain the extra phase lag for PSR J0631+0646, as their simulations did tend to show larger radio to gamma-ray phase lags.

4.4. Luminosity, Distance, and Gamma-Ray Efficiency

The fraction of their energy budgets that pulsars convert into gamma-ray radiation is a key question for understanding pulsar emission mechanisms. This requires converting the measured energy flux in gamma rays G_{100} (see Table 3 for the values) into the gamma-ray luminosity, with the relation $L_\gamma = 4\pi f_\Omega G_{100} d^2$, where d is the distance. As discussed in Section 4.2, most of the 13 Einstein@Home pulsars considered in this study are undetected in radio. For these pulsars we therefore cannot use the DM to infer distances, e.g., using the NE2001 model of free electrons in the Galaxy (Cordes & Lazio 2002). We can, however, calculate “heuristic” distances, d_h ,

and luminosities, L_γ^h , as follows:

$$d_h = \sqrt{L_\gamma^h / 4\pi G_{100}}, \quad (3)$$

where

$$L_\gamma^h = \sqrt{\dot{E} / 10^{33} \text{erg s}^{-1}} \times 10^{33} \text{erg s}^{-1}, \quad (4)$$

i.e., assuming that the gamma-ray luminosity scales as $\sqrt{\dot{E}}$ for these young pulsars (see 2PC) and assuming a typical geometrical factor f_Ω of 1. Heuristic distances for the 13 pulsars are given in Table 5. In most cases the values suggest that the pulsars lie at small or intermediate distances, as is also the case for the majority of known gamma-ray pulsars.

From the radio detections of PSR J0002+6216 and PSR J0631+0646 we could determine DM values and use the NE2001 model to extract the DM distances given in Table 5. For both pulsars the NE2001 distance is very large. The distance for PSR J0002+6216 of 7.7 kpc leads to a gamma-ray efficiency $\eta = L_\gamma / \dot{E}$ of about 120%. For PSR J0631+0646 a conversion efficiency of 100% is found for a distance of about 6.7 kpc. The NE2001 model therefore probably underestimates the density of free electrons along the lines of sight to these pulsars. Interestingly, the recently published model for the distribution of free electrons in the Galaxy of Yao et al. (2017) finds DM distances of 6.3 and 4.6 kpc for PSR J0002+6216 and PSR J0631+0646, respectively. The latter distance values lead to realistic efficiency estimates below 100% (81% and 90%, respectively).

4.5. X-Ray Counterpart Searches

We reanalyzed archival X-ray observations to search for counterparts to the new gamma-ray pulsars and to characterize their X-ray spectra. All our targets except PSR J1827–1446 have adequate coverage by at least one of the major contemporary observatories operating in the soft X-ray band: *Swift* (Burrows et al. 2005), *XMM-Newton* (Strüder et al. 2001; Turner et al. 2001), and *Chandra* (Garmire et al. 2003). The X-ray coverage ranges from few-kilosecond shallow snapshots with *Swift* to orbit-long, deep observations by *Chandra* and *XMM-Newton*. Almost all the detected pulsars have been observed by *Swift* as part of a systematic survey of the gamma-ray error boxes of the unidentified *Fermi* LAT sources (Stroh & Falcone 2013).

We reduced and analyzed the *XMM-Newton* data through the most recent release of the *XMM-Newton* Science Analysis Software (SAS) v15.0. We performed a standard data processing, using the `epproc` and `emproc` tools, and screening for high particle background time intervals following Salvetti et al. (2015). For the *Chandra* data analysis we used the *Chandra* Interactive Analysis of Observations (CIAO) software version 4.8. We recalibrated event data by using the `chandra_repro` tool. *Swift* data were processed and filtered with standard procedures and quality cuts²⁶ using FTOOLS tasks in the HEASOFT software package v6.19 and the calibration files in the latest Calibration Database release.

We performed a standard data analysis and source detection in the 0.3–10 keV energy range of the *XMM-Newton*-EPIC, *Chandra*-ACIS, and *Swift*-XRT observations (e.g., Marelli et al. 2015; Salvetti et al. 2015). We preferred the *XMM* and

²⁶ More detail in <http://swift.gsfc.nasa.gov/docs/swift/analysis/>.

Table 5
Pulse Shape Parameters and Derived Pulsar Parameters

PSR	Peaks	δ	Δ	Off-pulse Phase Range	\dot{E} (10^{33} erg s $^{-1}$)	DM Distance (kpc)	Heuristic Distance, d_h (kpc)
J0002+6216	2	0.171 ± 0.011	0.361 ± 0.012	0.59–1.00	153	7.7, 6.3	2.0
J0359+5414	1	0.00–0.58	1318	...	2.3
J0631+0646	2	0.469 ± 0.013	0.278 ± 0.013	0.83–0.31	104	>42.2, 4.6	1.5
J1057–5851	1	0.75–0.24	17	...	0.8
J1105–6037	2	...	0.317 ± 0.006	0.90–0.38	116	...	1.2
J1350–6225	2	...	0.485 ± 0.002	0.92–0.24, 0.52–0.77	133	...	1.3
J1528–5838	2	...	0.243 ± 0.022	0.48–1.00	22	...	1.1
J1623–5005	2	...	0.352 ± 0.005	0.99–0.45	267	...	1.3
J1624–4041	2	...	0.429 ± 0.003	0.44–0.70	39	...	1.8
J1650–4601	2	...	0.331 ± 0.005	0.48–1.00	291	...	1.1
J1827–1446	2	...	0.256 ± 0.008	0.82–0.32	14	...	0.7
J1844–0346	1	0.31–0.92	4249	...	2.4
J2017+3625	2	...	0.374 ± 0.004	0.02–0.42, 0.58–0.68	12	...	0.7

Note. The second, third, fourth, and fifth columns list the gamma-ray peak multiplicity, radio to gamma-ray phase lag (δ), gamma-ray peak separation (Δ) for pulse profiles with two components, and definition of the off-pulse phase interval, respectively, for each pulsar considered in our study. Uncertainties on δ and Δ are statistical only. The sixth column gives the spin-down power for each pulsar. The seventh column lists the DM distances for the radio-detected pulsars PSR J0002+6216 and PSR J0631+1036 as inferred with the NE2001 model of Cordes & Lazio (2002) and the model of Yao et al. (2017). The last column lists the heuristic distance, described in Section 4.4.

Chandra observatories if the same field has been observed because of the better performance in terms of effective area and spatial resolution. For each of the X-ray counterparts we performed a spectral analysis using XSPEC v12.9. After extracting response matrices and effective area files, we extracted X-ray fluxes by fitting the spectra with a power-law (PL) model using either a χ^2 or the C-statistic (Cash 1979) in the case of low counts (<100 photons) and negligible background. For sources characterized by low statistics (typically ≤ 30 photons), we fixed the column density to the value of the Galactic N_{H} integrated along the line of sight (Dickey & Lockman 1990) and scaled for the heuristic distance, and, if necessary, we set the X-ray PL photon index (Γ_{X}) to 2. All quoted uncertainties on the spectral parameters are reported at the 1σ confidence level. For each pulsar we computed the corresponding gamma-ray-to-X-ray flux ratio. As reported in Marelli et al. (2015), this could give important information on the nature of the detected pulsar. Finally, for all undetected ones, we computed the 3σ X-ray detection limit based on the measured signal-to-noise ratio, assuming a PL spectrum with $\Gamma_{\text{X}} = 2$ and the integrated Galactic N_{H} , scaled for the heuristic distance. The detailed results of these analyses are reported in Table 9.

Out of the 13 gamma-ray pulsars, we detected a significant X-ray counterpart for six. PSR J0002+6216, PSR J1105–6037, and PSR J1844–0344 were detected with *Swift*-XRT. These sources are listed in the First *Swift*-XRT Point Source (1SXPS) Catalog (Evans et al. 2014) as 1SXPS J000257.6+621609, 1SXPS J110500.3–603713, and 1SXPS J184432.9–034626, respectively. These sources are located at (α, δ) (J2000) = $(0^{\circ}7404, +62^{\circ}2692)$, $(166^{\circ}2515, -60^{\circ}6203)$, and $(281^{\circ}1371, -3^{\circ}7740)$ with 90% confidence error circles of $4''9$, $6''4$, and $2''7$. Owing to the long *Chandra* exposure time, we clearly detected both the pulsar and the associated nebula of PSR J0359+5414. The pulsar is located at $(\alpha, \delta) = (59^{\circ}8586, +54^{\circ}2486)$ with a 90% confidence error circle of $1''$. The nebula is approximately elliptical, with semimajor and semiminor axes of $\sim 15''$ and $\sim 7''$, respectively, roughly centered on the pulsar position. The nebula is well fitted by

an absorbed PL model with photon index equal to 1.4 ± 0.2 and unabsorbed flux in the 0.3–10 keV energy band of $(1.3 \pm 0.3) \times 10^{-14}$ erg cm $^{-2}$ s $^{-1}$. We also detected the counterpart for PSR J2017+3625 at $(\alpha, \delta) = (304^{\circ}4827, 36^{\circ}4189)$, with a $2''$ error, from analysis of a *Chandra* observation. From *XMM-Newton* data we detected two possible counterparts for PSR J1624–4041 at $\sim 13''$ from the gamma-ray pulsar position. The two plausible X-ray counterparts are located at $(\alpha, \delta) = (246^{\circ}0372, -40^{\circ}6931)$ and $(246^{\circ}0459, -40^{\circ}6899)$, both with a $0''8$ statistical plus $1''5$ systematic error. We report both counterparts in Table 9, as *src1* and *src2*, respectively.

5. Discussion

A total of 17 gamma-ray pulsars have been discovered among the 118 3FGL sources we have selected for the search, based on their gamma-ray emission properties being suggestive of pulsar emission. The high discovery rate of about 15% is comparable to that of previous similar surveys, of $\sim 8\%$ – 12% (Abdo et al. 2009; Pletsch et al. 2012a, 2013), even though we are searching fainter and fainter LAT sources. The improved semi-coherent blind search technique, the new Pass 8 LAT data, and the improved source selection and localization likely played an important role in the success of the survey. It is interesting to note that a number of sources in our list had already been searched for pulsations in the past. For example, comparing the sky locations searched in our survey with those analyzed in previous Einstein@Home or *Atlas* surveys (Pletsch et al. 2012a, 2013), we find that about 27% (32/118) of our sources had already been searched, and 11 of these have now been found to be gamma-ray pulsars. The multiple improvements in our new gamma-ray blind survey enumerated above likely explain the detections of these pulsars. Similarly, seven of the new discovered pulsars (PSR J0002+6216, PSR J0631+0646, PSR J1035–6720, PSR J1057–5851, PSR J1105–6037, PSR J1623–5005, and PSR J1624–4041) fall below the sensitivity limit of the previously used search algorithm (see Section 5.1 of Paper I for more details).

Table 6
Definition of Radio Observation Codes

Obs. Code	Telescope	Gain (K Jy ⁻¹)	Frequency (MHz)	Bandwidth ΔF (MHz)	β	n_p	WHHM (arcmin)	T_{rec} (K)
AO-327	Arecibo	11	327	68	1.12	2	6.3	116
AO-ALFA	Arecibo	10	1400	100	1.12	2	1.5	30
AO-Lwide	Arecibo	10	1510	300	1.12	2	1.5	27
Eff-7B	Effelsberg	1.5	1400	240	1.05	2	9.1	22
Eff-L1	Effelsberg	1.5	1400	240	1.05	2	9.1	22
GBT-820	GBT	2.0	820	200	1.05	2	7.9	29
GBT-S	GBT	1.9	2000	700	1.05	2	3.1	22
GMRT-322	GMRT	1.6	322	32	1	2	40	106
GMRT-610	GMRT	1.6	607	32	1	2	20	102
Nancay-L	Nancay	1.4	1398	128	1.05	2	2×11	35
Parkes-AFB	Parkes	0.735	1374	288	1.25	2	7	25
Parkes-BPSR	Parkes	0.735	1352	340	1.05	2	7	25
Parkes-DFB4	Parkes	0.735	1369	256	1.1	2	7	25

Note. Radio telescopes and backend parameters used for follow-up observations of the new pulsars, described in Section 4.2.

Comparing our target list with the best pulsar candidates from Saz Parkinson et al. (2016), who also used machine-learning techniques for classifying 3FGL unassociated sources, we find a relatively high overlap of about 60%. Interestingly, PSR J0631+0646 and PSR J1827–1446, discovered in our survey, do not appear in their list. In the case of PSR J0631+0646 this could be caused by the possible association with a nearby SNR, while for PSR J1827–1446 the source detection significance of $\sim 9.1\sigma$ is simply under the 10σ threshold set by Saz Parkinson et al. (2016) for constructing their list. The good overlap between the two target lists makes us confident that we have selected and searched 3FGL sources likely powered by unknown pulsars.

The spectral properties (photon indices Γ and cutoff energies E_{cut}) for the surveyed sources, for the 13 new gamma-ray pulsars, and for pulsars from the 2PC catalog are displayed in Figure 3. The photon indices and cutoff energies of the new Einstein@Home pulsars are very similar to those of 2PC pulsars, a natural consequence of the source selection procedure described in Section 2.2. This is confirmed by a Kolmogorov–Smirnov test, which finds a $\sim 90\%$ probability that the two samples are drawn from the same parent distribution. The GMM algorithm used for classifying 3FGL sources therefore seems to have efficiently selected pulsar candidates among unassociated sources, which is further supported by the fact that $\sim 80\%$ of the discovered pulsars were found in the top half of Table 1. The gamma-ray fluxes of the new pulsars are generally lower than those of 2PC pulsars found in blind searches, also unsurprisingly.

Possible reasons for the nondetections of pulsars in other 3FGL unassociated sources listed in Table 1 are that these sources could be pulsars with low pulse fractions or broad gamma-ray pulse profiles, for which the sensitivity of the search algorithm is lower (see Section 3 of Paper I for a detailed discussion of the search sensitivity). They could also be pulsars with high timing noise, or they could be millisecond pulsars in binary systems. A number of sources in our list were indeed recently identified as candidate binary millisecond Pulsars after we started our search, for instance, 3FGL J0212.1+5320 (Li et al. 2016), 3FGL J0744.1–2523 (Salveti et al. 2017), and 3FGL J2039.6–5618 (Salveti et al. 2015). The discovery of pulsars in binary systems in gamma rays requires initial guesses of the orbital parameters, from, e.g.,

optical or X-ray observations (see, e.g., Pletsch et al. 2012b). If all searched sources are indeed gamma-ray pulsars, then we would expect a good number of them to be in binaries, based on the 2PC pulsar population.

As can be seen from Figure 3 and Table 1, a number of sources included in our survey had Γ and/or E_{cut} parameters higher than those of 2PC pulsars. These sources were selected by the GMM based on their low variability and moderate curvature indices. Although the gamma-ray emission properties of these sources seem different from those of 2PC pulsars a priori, we included them in the survey for completeness but failed to find new pulsars in any of them. One possibility for the future would be to train the GMM not to select these peculiar sources, or to continue searching in order not to miss pulsars with large spectral index and/or cutoff values. In any case, half of the searched sources from Table 1 have Γ and E_{cut} parameters resembling those of 2PC pulsars and are thus still prime targets for pulsation searches.

Of the 13 new pulsars reported in this article, only two have been detected in radio. The deep radio follow-up observations conducted as part of this project placed tight constraints on the flux densities of the undetected pulsars. Only six young pulsars among the 54 discovered in blind searches of the LAT data have so far been detected as radio pulsars. The many nondetections in radio are not surprising, given that past radio pulsar surveys have covered the entire sky with moderate sensitivity (see, e.g., Cordes et al. 2006; Keith et al. 2010; Barr et al. 2013; Boyles et al. 2013; Deneva et al. 2013). PSR J0002+6216 and PSR J0631+0646, both detected in radio, are, however, perfect examples of pulsars with low radio flux densities that would be missed in the short integration times of traditional radio pulsar surveys. The LAT was therefore crucial for the discovery of all these young pulsars, and blind search surveys are clearly key for completing the population of young and energetic gamma-ray pulsars. The discovery of these 13 pulsars with Einstein@Home brings the total number of nonrecycled gamma-ray pulsars to 112, of which $\sim 54\%$ are radio-loud. The fraction thus remains similar to that reported in 2PC. As the *Fermi* mission continues, it will be interesting to see how this fraction evolves, as it is a powerful discriminant of pulsar emission models.

Table 7
Radio Search Observations of the New Pulsars

Target PSR	Obs. Code	Date	t_{int} (minutes)	R.A. (J2000)	Decl. (J2000)	Offset (arcmin)	T_{sky} (K)	S_{min} (μJy)
J0002+6216	GBT-S	2013 Feb 28	28	00:02:40.3	62:16:44.0	2.2	0.9	Detected
	Eff-L1	2015 Feb 14	120	00:02:58.1	62:16:09.6	0.0	2.4	Detected
J0359+5414	Eff-7B	2010 May 25	32	03:59:35.8	54:10:40.8	4.5	2.0	34
	Eff-7B	2010 Jul 17	60	03:59:31.5	54:11:44.1	3.3	2.0	23
	GBT-S	2012 Nov 17	40	03:59:36.3	54:12:56.5	2.5	0.8	18
	GBT-S	2013 Mar 17	7	03:59:36.3	54:12:56.5	2.5	0.8	42
	Eff-L1	2015 Feb 14	115	03:59:26.0	54:14:55.6	0.0	2.0	15
J0631+0646	Eff-L1	2015 Feb 13	120	06:31:52.4	06:46:15.3	0.0	1.8	Detected
	AO-327	2015 Mar 15	75	06:31:52.4	06:46:14.0	0.0	78.4	Detected
	AO-Lwide	2015 Jun 14	69	06:31:52.4	06:46:14.0	0.0	1.5	Detected
J1057–5851	Parkes-DFB4	2015 Aug 05	70	10:57:09.3	–58:51:11.0	0.1	3.9	49
	Parkes-DFB4	2015 Aug 06	51	10:57:09.3	–58:51:11.0	0.1	3.9	58
J1105–6037	Parkes-DFB4	2015 Aug 05	70	11:05:00.5	–60:37:15.6	0.0	5.7	52
	Parkes-DFB4	2015 Aug 06	60	11:05:00.5	–60:37:15.6	0.0	5.7	56
J1350–6225	Parkes-AFB	2010 Nov 19	145	13:49:36.0	–62:24:00.0	8.1	10.5	110
	Parkes-BPSR	2010 Nov 19	144	13:49:36.0	–62:24:00.0	8.1	10.9	86
	Parkes-DFB4	2015 Sep 05	433	13:50:44.5	–62:25:43.7	0.0	10.6	24
	Parkes-DFB4	2015 Sep 13	500	13:50:44.5	–62:25:43.7	0.0	10.6	23
J1623–5005	Parkes-BPSR	2010 Nov 19	144	16:22:48.0	–50:06:00.0	2.7	16.9	45
	Parkes-AFB	2010 Nov 19	88	16:22:48.0	–50:06:00.0	2.7	16.2	74
J1624–4041	Parkes-AFB	2009 Dec 02	120	16:24:06.2	–40:40:48.0	1.0	4.1	41
	GBT-S	2009 Dec 23	30	16:24:06.0	–40:40:48.0	1.0	1.5	15
	Parkes-AFB	2010 Jul 18	120	16:24:03.0	–40:42:56.0	1.9	4.1	43
	Parkes-AFB	2010 Jul 26	120	16:24:03.0	–40:42:56.0	1.9	4.1	43
	Parkes-AFB	2010 Nov 12	60	16:24:03.0	–40:42:56.0	1.9	4.1	60
	GMRT-610	2011 Feb 15	60	16:24:03.8	–40:41:20.4	1.2	34.4	297
	Parkes-AFB	2012 Jul 12	60	16:24:09.0	–40:40:23.0	1.1	4.1	58
	GMRT-322	2012 Jul 12	60	16:24:09.0	–40:40:23.0	1.1	178.6	618
	Parkes-AFB	2012 Dec 17	60	16:24:09.0	–40:40:23.0	1.1	4.1	58
J1650–4601	Parkes-BPSR	2010 Nov 21	144	16:50:48.0	–46:06:00.0	6.9	14.4	74
	Parkes-AFB	2010 Nov 21	139	16:50:48.0	–46:06:00.0	6.9	13.8	96
J1827–1446	GBT-820	2014 Apr 21	35	18:27:20.2	–14:46:01.2	1.2	33.2	60
	Eff-L1	2015 Feb 14	120	18:27:24.6	–14:46:25.4	0.0	8.3	19
J1844–0346	Eff-7B	2010 May 15	32	18:44:15.4	–03:42:46.8	5.7	11.8	53
	Eff-7B	2010 Jul 30	60	18:44:21.8	–03:42:03.6	5.2	11.8	37
	Eff-7B	2010 Jul 31	60	18:44:21.8	–03:42:03.6	5.2	11.8	37
	GBT-S	2012 Nov 17	22	18:44:26.2	–03:45:21.6	2.0	4.7	24
	Eff-7B	2015 Aug 27	120	18:44:33.0	–03:46:32.0	0.0	11.8	21
J2017+3625	Nancay-L	2010 May 05	65	20:17:55.8	36:25:08.0	0.0	4.6	50
	Nancay-L	2010 May 11	47	20:17:55.8	36:25:08.0	0.0	4.6	58
	GBT-S	2010 May 13	60	20:17:59.0	36:25:19.0	0.7	1.8	10
	GBT-820	2011 Jan 15	45	20:17:57.6	36:27:36.0	2.5	18.6	43
	AO-ALFA	2015 May 11	20	20:17:54.2	36:23:24.0	1.8	4.6	34
	AO-327	2015 Jun 24	15	20:17:55.9	36:27:32.4	2.4	202.7	170
	AO-327	2015 Jun 25	15	20:17:55.9	36:27:32.4	2.4	202.7	170
	Eff-7B	2015 Aug 27	120	20:17:55.8	36:25:08.0	0.0	4.6	17
	AO-327	2015 Nov 16	28	20:17:55.9	36:25:08.4	0.0	202.7	113
	AO-Lwide	2015 Nov 17	33	20:17:55.9	36:25:08.4	0.0	3.8	5

Note. Radio observations of the new pulsars. In the cases of PSR J0002+6216 and PSR J0631+0646, radio pulsations were detected (see Section 4.2).

Table 8
Light-curve Modeling Results

PSR	TPC $-\ln \mathcal{L}$	TPC α (deg)	TPC ζ (deg)	TPC f_{Ω}	TPC Radio Flag	OG $-\ln \mathcal{L}$	OG α (deg)	OG ζ (deg)	OG f_{Ω}	OG Radio Flag
J0002+6216	110.26	64^{+3}_{-2}	54 ± 2	1.05 ± 0.04	...	105.70	69^{+8}_{-1}	58^{+25}_{-1}	$1.08^{+0.05}_{-0.27}$...
J0359+5414 [†]	39.88	1 ± 1	2 ± 1	$19.62^{+0.01}_{-8.52}$	L	38.04	80^{+8}_{-6}	24 ± 4	$1.01^{+0.09}_{-0.41}$	Q
J1057-5851 [†]	32.62	57^{+2}_{-3}	40^{+7}_{-2}	$0.95^{+0.05}_{-0.18}$	F	42.94	$65^{+2} + -1$	28^{+1}_{-2}	$0.76^{+0.10}_{-0.03}$	Q
J1105-6037	46.11	61^{+4}_{-27}	49^{+21}_{-7}	$0.98^{+0.05}_{-0.31}$	F	67.40	8^{+5}_{-2}	71^{+4}_{-1}	$0.99^{+0.01}_{-0.09}$	Q
J1350-6225	79.42	82^{+2}_{-4}	85^{+1}_{-2}	0.82 ± 0.10	L	48.16	90 ± 9	88^{+1}_{-3}	0.70 ± 0.03	L
J1528-5838 [†]	29.71	2 ± 1	2 ± 1	$3.77^{+0.01}_{-0.28}$	L	27.21	9^{+9}_{-6}	74^{+6}_{-3}	$0.95^{+0.04}_{-0.09}$	Q
J1623-5005	31.28	32^{+2}_{-1}	68 ± 1	$0.62^{+0.02}_{-0.01}$	Q	58.83	9^{+12}_{-1}	72^{+3}_{-1}	$0.21^{+0.19}_{-0.01}$	Q
J1624-4041	86.57	71^{+2}_{-5}	58^{+1}_{-5}	1.13 ± 0.03	F	72.90	86 ± 1	68 ± 1	$1.02^{+0.02}_{-0.01}$	F
J1650-4601	46.30	13^{+2}_{-7}	69 ± 1	$0.47^{+0.01}_{-0.09}$	Q	54.13	11^{+2}_{-4}	74^{+6}_{-3}	$0.21^{+0.19}_{-0.16}$	Q
J1827-1446 [†]	52.65	1 ± 1	2 ± 1	$69.16^{+0.01}_{-5.67}$	L	45.04	75^{+1}_{-11}	26^{+5}_{-1}	$1.34^{+0.01}_{-0.71}$	Q
J1844-0346 [†]	23.06	10 ± 1	68 ± 1	0.49 ± 0.07	Q	22.08	79^{+6}_{-4}	22^{+1}_{-3}	$0.99^{+0.31}_{-0.39}$	Q
J2017+3625	168.10	23 ± 5	69 ± 1	$0.52^{+0.16}_{-0.01}$	Q	127.47	16^{+12}_{-5}	80^{+1}_{-5}	$0.23^{+0.10}_{-0.04}$	Q

Note. Light-curve fitting results for all pulsars except PSR J0631+0646. The first column gives the pulsar name; a [†] indicates that the $\Delta \ln \mathcal{L}$ surface was not renormalized. The second (seventh) column gives the best-fit $-\ln \mathcal{L}$ value for the TPC (OG) model. The third, fourth, and fifth (eight, ninth, and tenth) columns give the best-fit α and ζ with corresponding f_{Ω} for the TPC (OG) model. For pulsars without a radio detection, the sixth (eleventh) column gives a radio-loudness prediction from the best-fit geometry for the TPC (OG) model: L = radio-loud, F = radio-faint, and Q = radio-quiet; see the text for details.

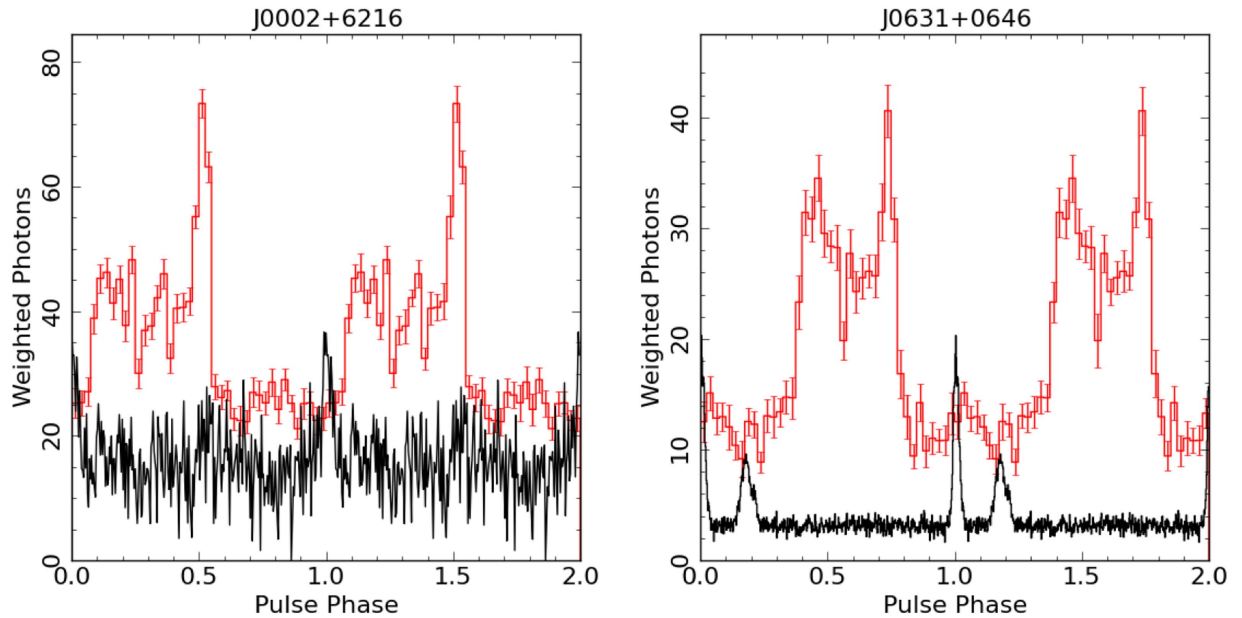


Figure 4. Radio and gamma-ray pulse profiles for PSR J0002+6216 (left) and PSR J0631+0646 (right). Two complete cycles are shown for clarity. Weighted LAT gamma-ray pulse profiles (in red) were produced by selecting photons with weights greater than 0.05. Radio profiles (in black) correspond to 1.4 GHz observations made with the Effelsberg telescope for PSR J0002+6216 and the Arecibo telescope for PSR J0631+0646. Uncertainties in DM converted to uncertainties in the phase offset between the radio and gamma-ray peaks correspond to $\sim 1\%$ of the rotational periods.

Recently, Fermi LAT Collaboration (2017) released a catalog of resolved point sources in a $40^\circ \times 40^\circ$ region around the Galactic center direction. By selecting spectrally curved sources and comparing the SEDs of these point sources with those of a large sample of 3FGL sources, they could identify pulsar-like candidates from these new Galactic bulge sources. These sources are also prime targets for future blind pulsation searches.

6. Conclusions

Using information from a preliminary version of the 3FGL catalog of *Fermi* LAT sources, we have selected 118 targets with pulsar-like emission properties. We produced Pass 8 LAT data

sets for each of the sources, and these data sets were then searched for pulsations with a multistage blind search algorithm, utilizing the volunteer computing system Einstein@Home. This survey led to the discovery of 17 pulsars, of which 13 are presented in this article, and the other pulsars have been or will be published elsewhere.

On-pulse and off-pulse gamma-ray spectral analyses were conducted for each of the new pulsars. The gamma-ray emission properties of the 13 newly discovered pulsars reported in this paper are similar to those of other young gamma-ray pulsars, such as those from the 2PC catalog. Radio follow-up observations were carried out, resulting in the detections of two

Table 9
Summary of the Pulsar X-Ray Spectral Parameters

PSR	X-ray Observatory ^a	Exposure (ks)	N_{H} (10^{21} cm^{-2})	Γ_X	F_X^{b} ($10^{-14} \text{ erg cm}^{-2} \text{ s}^{-1}$)	G_{100}/F_X^{c}
J0002+6216	<i>Swift</i>	9.2	1.0^{e}	2^{e}	$4.3_{-2.4}^{+1.9}$	600_{-260}^{+760}
J0359+5414	<i>Chandra</i>	29.7	2.0 ± 1.1	2.7 ± 0.3	0.96 ± 0.20	5800 ± 1500
J0631+0646	<i>Swift</i>	3.5	0.4^{e}	2^{e}	<9.1	>400
J1057–5851	<i>Chandra</i>	10.1	3.0^{e}	2^{e}	<0.25	>20000
J1105–6037	<i>Swift</i>	16	1.0^{e}	2^{e}	$4.8_{-1.4}^{+1.9}$	1300_{-380}^{+550}
J1350–6225	<i>Swift</i>	5.4	1.4^{e}	2^{e}	<8.1	>740
J1528–5838	<i>Swift</i>	6	0.7^{e}	2^{e}	<6.2	>480
J1623–5005	<i>XMM-Newton</i>	85.4	4.0^{e}	2^{e}	<2.0	>4100
J1624–4041	<i>XMM-Newton</i>	31.0	2.0^{e}	(src1) 0.7 ± 0.2 (src2) 2.0 ± 0.4	3.7 ± 0.7 1.0 ± 0.3	430 ± 100 1600 ± 690
J1650–4601	<i>Swift</i>	3.5	1.0^{e}	2^{d}	<10.8	>1100
J1827–1446
J1844–0344	<i>Swift</i>	82	2.4^{e}	2^{e}	7.6 ± 1.3	1300 ± 260
J2017+3625	<i>Chandra</i>	10.0	1.0^{e}	2^{e}	1.7 ± 0.7	3600 ± 2600

Notes. Results of the analysis of archival X-ray observations. The first and second columns list the pulsar name and the X-ray observatory. The third, fourth, and fifth columns list the duration of the exposure, and for each X-ray counterpart the best-fit column density and photon index. The following two columns give the unabsorbed X-ray flux in the 0.3–10 keV energy band and the gamma-ray-to-X-ray flux ratio. All uncertainties are reported at the 68% confidence level.

^a We report only the X-ray observatory used for the spectral analysis.

^b When the X-ray counterpart is not detected, we report the minimum X-ray unabsorbed flux required for a 3σ detection.

^c Gamma-ray energy fluxes in 0.1–100 GeV are used to calculate the gamma-ray-to-X-ray flux ratio.

^d Due to the low statistics in these sources, we fixed this parameter in the spectral analysis as described in the text.

of them with low radio flux densities. The pulse profiles of the 13 new pulsars were fit using the TPC and OG models. For some of the pulsars, radio emission is predicted by the models but is still undetected in follow-up or archival observations.

The increased sensitivity of the blind search algorithm, the improved Pass 8 LAT data, and improved source selection and relocalization pipeline enabled us to maintain a relatively high detection rate, compared to previous similar surveys. Nevertheless, for a number of the 3FGL sources with clear pulsar-like properties selected for the search, we were unable to find a pulsar. These sources remain excellent targets for future searches. New systematic surveys such as the one presented in this paper and in Paper I are warranted, and so are blind searches for millisecond pulsars in binary systems, which at the moment can only be searched using external constraints on the orbital parameters from observations at other wavelengths.

This work was supported by the Max-Planck-Gesellschaft (MPG), by the Deutsche Forschungsgemeinschaft (DFG) through an Emmy Noether research grant PL 710/1-1 (PI: Holger J. Pletsch), and by NSF award 1104902.

The authors also gratefully acknowledge the support of the many thousands of Einstein@Home volunteers, without whom this search would not have been possible.

The *Fermi* LAT Collaboration acknowledges generous ongoing support from a number of agencies and institutes that have supported both the development and the operation of the LAT, as well as scientific data analysis. These include the National Aeronautics and Space Administration and the Department of Energy in the United States; the Commissariat à l’Énergie Atomique and the Centre National de la Recherche Scientifique/Institut National de Physique Nucléaire et de Physique des Particules in France; the Agenzia Spaziale Italiana and the Istituto Nazionale di Fisica Nucleare in Italy; the Ministry of Education, Culture, Sports, Science and Technology (MEXT), High Energy Accelerator Research Organization (KEK) and Japan Aerospace Exploration Agency (JAXA) in Japan; and the




K. A. Wallenberg Foundation, the Swedish Research Council, and the Swedish National Space Board in Sweden.

Additional support for science analysis during the operations phase is gratefully acknowledged from the Istituto Nazionale di Astrofisica in Italy and the Centre National d’Études Spatiales in France. This work performed in part under DOE contract DE-AC02-76SF00515.

Fermi research at NRL is supported by NASA. The Parkes radio telescope is part of the Australia Telescope, which is funded by the Commonwealth Government for operation as a National Facility managed by CSIRO. We thank our colleagues for their assistance with the radio timing observations. The Robert C. Byrd Green Bank Telescope (GBT) is operated by the National Radio Astronomy Observatory, a facility of the National Science Foundation operated under cooperative agreement by Associated Universities, Inc. The Arecibo Observatory is operated by SRI International under a cooperative agreement with the National Science Foundation (AST-1100968), and in alliance with Ana G. Méndez-Universidad Metropolitana and the Universities Space Research Association. The Nançay Radio Observatory is operated by the Paris Observatory, associated with the French Centre National de la Recherche Scientifique (CNRS). The Effelsberg 100 m telescope is operated by the MPIfR (Max-Planck-Institut für Radioastronomie). We acknowledge support of GMRT operators. The GMRT is run by the National Centre for Radio Astrophysics of the Tata Institute of Fundamental Research.

ORCID iDs

J. Wu  <https://orcid.org/0000-0003-3536-4368>
C. J. Clark  <https://orcid.org/0000-0003-4355-3572>
H. J. Pletsch  <https://orcid.org/0000-0002-1164-4755>
L. Guillemot  <https://orcid.org/0000-0002-9049-8716>
D. J. Champion  <https://orcid.org/0000-0003-1361-7723>
J. Deneva  <https://orcid.org/0000-0003-1226-0793>
P. S. Ray  <https://orcid.org/0000-0002-5297-5278>
M. Kramer  <https://orcid.org/0000-0002-4175-2271>
C. Aulbert  <https://orcid.org/0000-0002-1481-8319>

C. Beer  <https://orcid.org/0000-0003-3991-067X>
 F. Camilo  <https://orcid.org/0000-0002-1873-3718>
 H. B. Eggenstein  <https://orcid.org/0000-0001-5296-7035>
 M. Kerr  <https://orcid.org/0000-0002-0893-4073>
 S. M. Ransom  <https://orcid.org/0000-0001-5799-9714>

References

- Abdo, A. A., Ackermann, M., Ajello, M., et al. 2009, *Sci*, **325**, 840
 Abdo, A. A., Ackermann, M., Ajello, M., et al. 2010, *ApJ*, **711**, 64
 Abdo, A. A., Ajello, M., Allafort, A., et al. 2013, *ApJS*, **208**, 17
 Acero, F., Ackermann, M., Ajello, M., et al. 2015, *ApJS*, **218**, 23
 Acero, F., Ackermann, M., Ajello, M., et al. 2016a, *ApJS*, **223**, 26
 Acero, F., Ackermann, M., Ajello, M., et al. 2016b, *ApJS*, **224**, 8
 Allafort, A., Baldini, L., Ballet, J., et al. 2013, *ApJL*, **777**, L2
 Atwood, W., Albert, A., Baldini, L., et al. 2013, arXiv:1303.3514
 Atwood, W. B., Abdo, A. A., Ackermann, M., et al. 2009, *ApJ*, **697**, 1071
 Barr, E. D., Guillemot, L., Champion, D. J., et al. 2013, *MNRAS*, **429**, 1633
 Bhattacharyya, B., Roy, J., Ray, P. S., et al. 2013, *ApJL*, **773**, L12
 Boyles, J., Lynch, R. S., Ransom, S. M., et al. 2013, *ApJ*, **763**, 80
 Burrows, D. N., Hill, J. E., Nousek, J. A., et al. 2005, *SSRv*, **120**, 165
 Camilo, F., Kerr, M., Ray, P. S., et al. 2012, *ApJ*, **746**, 39
 Camilo, F., Kerr, M., Ray, P. S., et al. 2015, *ApJ*, **810**, 85
 Camilo, F., Ray, P. S., Ransom, S. M., et al. 2009, *ApJ*, **705**, 1
 Cash, W. 1979, *ApJ*, **228**, 939
 Cheng, K. S., Ho, C., & Ruderman, M. 1986, *ApJ*, **300**, 500
 Clark, C. J., Pletsch, H. J., Wu, J., et al. 2015, *ApJL*, **809**, L2
 Clark, C. J., Pletsch, H. J., Wu, J., et al. 2016, *ApJL*, **832**, L15
 Clark, C. J., Wu, J., Pletsch, H. J., et al. 2017, *ApJ*, **834**, 106
 Cognard, I., Guillemot, L., Johnson, T. J., et al. 2011, *ApJ*, **732**, 47
 Cordes, J. M., Freire, P. C. C., Lorimer, D. R., et al. 2006, *ApJ*, **637**, 446
 Cordes, J. M., & Lazio, T. J. W. 2002, arXiv:astro-ph/0207156
 Cromartie, H. T., Camilo, F., Kerr, M., et al. 2016, *ApJ*, **819**, 34
 de Jager, O. C., Raubenheimer, B. C., & Swanepoel, J. W. H. 1989, *A&A*, **221**, 180
 Deneva, J. S., Stovall, K., McLaughlin, M. A., et al. 2013, *ApJ*, **775**, 51
 Deutsch, A. J. 1955, *AnAp*, **18**, 1
 Dickey, J. M., & Lockman, F. J. 1990, *ARA&A*, **28**, 215
 Dyks, J., & Rudak, B. 2003, *ApJ*, **598**, 1201
 Evans, P. A., Osborne, J. P., Beardmore, A. P., et al. 2014, *ApJS*, **210**, 8
 Fermi LAT Collaboration 2017, arXiv:1705.00009
 Garmire, G. P., Bautz, M. W., Ford, P. G., Nousek, J. A., & Ricker, G. R., Jr. 2003, *Proc. SPIE*, **4851**, 28
 Guillemot, L., Freire, P. C. C., Cognard, I., et al. 2012a, *MNRAS*, **422**, 1294
 Guillemot, L., Johnson, T. J., Venter, C., et al. 2012b, *ApJ*, **744**, 33
 Guillemot, L., Kramer, M., Johnson, T. J., et al. 2013, *ApJ*, **768**, 169
 Haslam, C. G. T., Salter, C. J., Stoffel, H., & Wilson, W. E. 1982, *A&AS*, **47**, 1
 Hewish, A., Bell, S. J., Pilkington, J. D. H., Scott, P. F., & Collins, R. A. 1968, *Natur*, **217**, 709
 Johnson, T. J., Venter, C., Harding, A. K., et al. 2014, *ApJS*, **213**, 6
 Kalapotharakos, C., Harding, A. K., & Kazanas, D. 2014, *ApJ*, **793**, 97
 Kalapotharakos, C., Harding, A. K., Kazanas, D., & Contopoulos, I. 2012, *ApJL*, **754**, L1
 Keith, M. J., Jameson, A., van Straten, W., et al. 2010, *MNRAS*, **409**, 619
 Keith, M. J., Johnston, S., Ray, P. S., et al. 2011, *MNRAS*, **414**, 1292
 Kerr, M. 2010, PhD thesis, Univ. Washington
 Kerr, M. 2011, *ApJ*, **732**, 38
 Kerr, M., Camilo, F., Johnson, T. J., et al. 2012, *ApJL*, **748**, L2
 Lee, K. J., Guillemot, L., Yue, Y. L., Kramer, M., & Champion, D. J. 2012, *MNRAS*, **424**, 2832
 Li, K.-L., Kong, A. K. H., Hou, X., et al. 2016, *ApJ*, **833**, 143
 Lorimer, D., & Kramer, M. 2005, *Handbook of Pulsar Astronomy* (Cambridge: Cambridge Univ. Press)
 Maan, Y. 2015, *ApJ*, **815**, 126
 Maan, Y., Aswathappa, H. A., & Deshpande, A. A. 2012, *MNRAS*, **425**, 2
 Marelli, M., Mignani, R. P., De Luca, A., et al. 2015, *ApJ*, **802**, 78
 Mignani, R. P., Paladino, R., Rudak, B., et al. 2017, *ApJL*, submitted (arXiv:1708.02828)
 Mirabal, N., Frias-Martinez, V., Hassan, T., & Frias-Martinez, E. 2012, *MNRAS*, **424**, L64
 Muslimov, A. G., & Harding, A. K. 2003, *ApJ*, **588**, 430
 Muslimov, A. G., & Harding, A. K. 2004, *ApJ*, **606**, 1143
 Pierbattista, M., Harding, A. K., Grenier, I. A., et al. 2015, *A&A*, **575**, A3
 Pletsch, H. J., Guillemot, L., Allen, B., et al. 2012a, *ApJ*, **744**, 105
 Pletsch, H. J., Guillemot, L., Allen, B., et al. 2013, *ApJL*, **779**, L11
 Pletsch, H. J., Guillemot, L., Fehrmann, H., et al. 2012b, *Sci*, **338**, 1314
 Ransom, S. M., Ray, P. S., Camilo, F., et al. 2011, *ApJL*, **727**, L16
 Salvetti, D., Mignani, R. P., De Luca, A., et al. 2015, *ApJ*, **814**, 88
 Salvetti, D., Mignani, R. P., De Luca, A., et al. 2017, *MNRAS*, **470**, 466
 Saz Parkinson, P. M., Dormody, M., Ziegler, M., et al. 2010, *ApJ*, **725**, 571
 Saz Parkinson, P. M., Xu, H., Yu, P. L. H., et al. 2016, *ApJ*, **820**, 8
 Scargle, J. D., Norris, J. P., Jackson, B., & Chiang, J. 2013, *ApJ*, **764**, 167
 Story, S. A., Gonthier, P. L., & Harding, A. K. 2007, *ApJ*, **671**, 713
 Stroh, M. C., & Falcone, A. D. 2013, *ApJS*, **207**, 28
 Strüder, L., Briel, U., Dennerl, K., et al. 2001, *A&A*, **365**, L18
 Swiggum, J. K., Kaplan, D. L., McLaughlin, M. A., et al. 2017, *ApJ*, **847**, 25
 Turner, M. J. L., Abbey, A., Arnaud, M., et al. 2001, *A&A*, **365**, L27
 Venter, C., Harding, A. K., & Guillemot, L. 2009, *ApJ*, **707**, 800
 Watters, K. P., Romani, R. W., Weltevrede, P., & Johnston, S. 2009, *ApJ*, **695**, 1289
 Yao, J. M., Manchester, R. N., & Wang, N. 2017, *ApJ*, **835**, 29