



**HAL**  
open science

## ProjBase: analyser les dynamiques de recherches dans les formes projets

Philippe Breucker, Guillaume Ollivier

► **To cite this version:**

Philippe Breucker, Guillaume Ollivier. ProjBase: analyser les dynamiques de recherches dans les formes projets. 2013, 21 p. hal-01713754

**HAL Id: hal-01713754**

**<https://hal.science/hal-01713754v1>**

Submitted on 6 Jun 2020

**HAL** is a multi-disciplinary open access archive for the deposit and dissemination of scientific research documents, whether they are published or not. The documents may come from teaching and research institutions in France or abroad, or from public or private research centers.

L'archive ouverte pluridisciplinaire **HAL**, est destinée au dépôt et à la diffusion de documents scientifiques de niveau recherche, publiés ou non, émanant des établissements d'enseignement et de recherche français ou étrangers, des laboratoires publics ou privés.

**PROJBASE**

# analyser les dynamiques de recherches dans les formes projets

**Philippe Breucker**

INRA SenS, PF CorText

**Guillaume Ollivier**

INRA Ecodéveloppement, PF Amandes.Txt

# Construire un outil informatique pour les SHS

Situation d'interface entre monde des SHS et de l'informatique qui s'ignorent le plus souvent

Diversité des profils de chercheurs, de leurs ontologies du social et de leur problématiques

Des demandes spécifiques le plus souvent floues

Enjeu de traduction pour mobiliser et/ou construire des outils adaptés à des usagers réflexifs

Recherche de généralisabilité des outils si possible

# Un exemple : analyser la forme 'projet de recherche'

En Etude Sociale des Sciences : traditionnellement, analyses scientométriques des notices bibliographiques comme proxy de l'activité scientifique

Beaucoup de choses possibles mais : non exhaustivité des données = difficulté à refléter autres aspects de l'activité, les situations non hégémoniques (pays, domaine de recherche...) et les activités de R&D

Intérêt de l'analyse de la forme 'Projet':

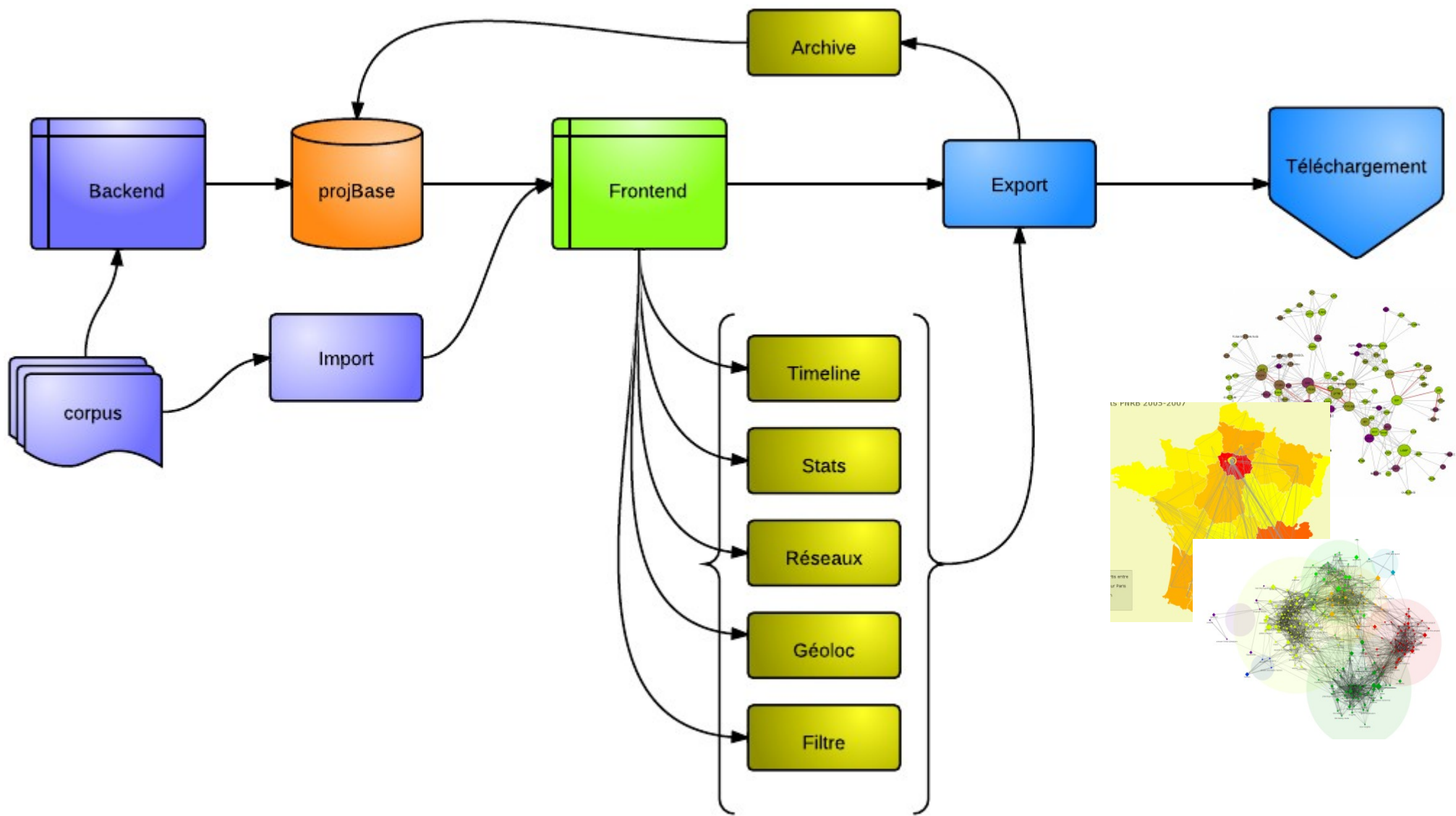
- Forme dominante d'organisation du travail scientifique
- Lieu d'articulation entre une politique de recherche et les praticiens de la recherche = on traite les deux à la fois :
  - politique de recherche : les impulsions, les justifications et les budgets investis
  - Chercheurs : justifications et mise en conformité avec une commande de recherche
- Permet de prendre en compte les acteurs non publiant partenaires de la recherche

Enjeux :

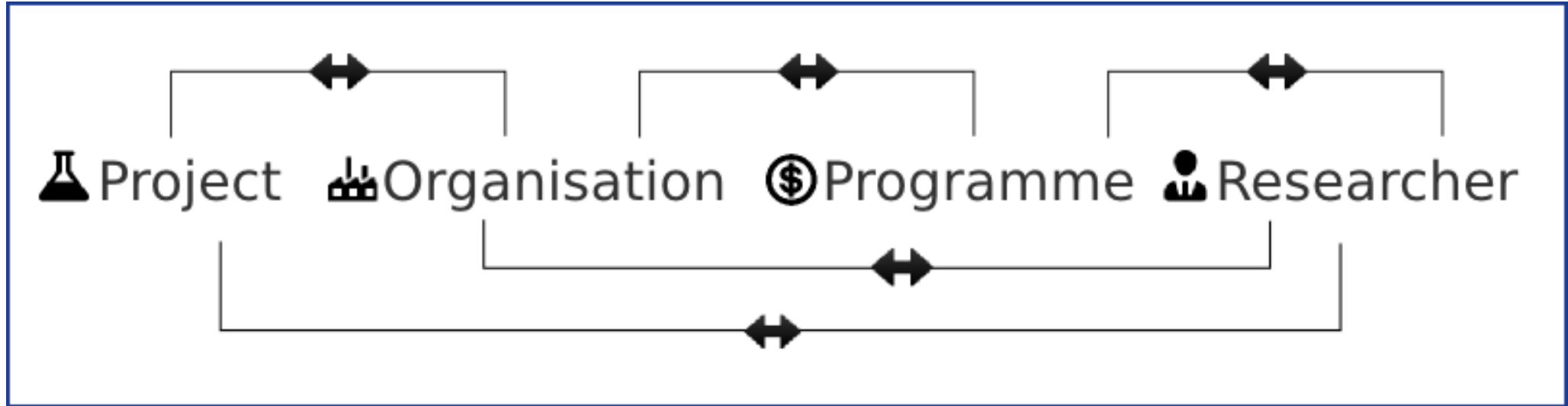
- Production de la donnée : associer récupération et formatage de données existantes et alimentation manuelle des données issues d'enquête
- création d'outil générique tout en restant adaptable aux besoins spécifiques de recherche

PROJBASE

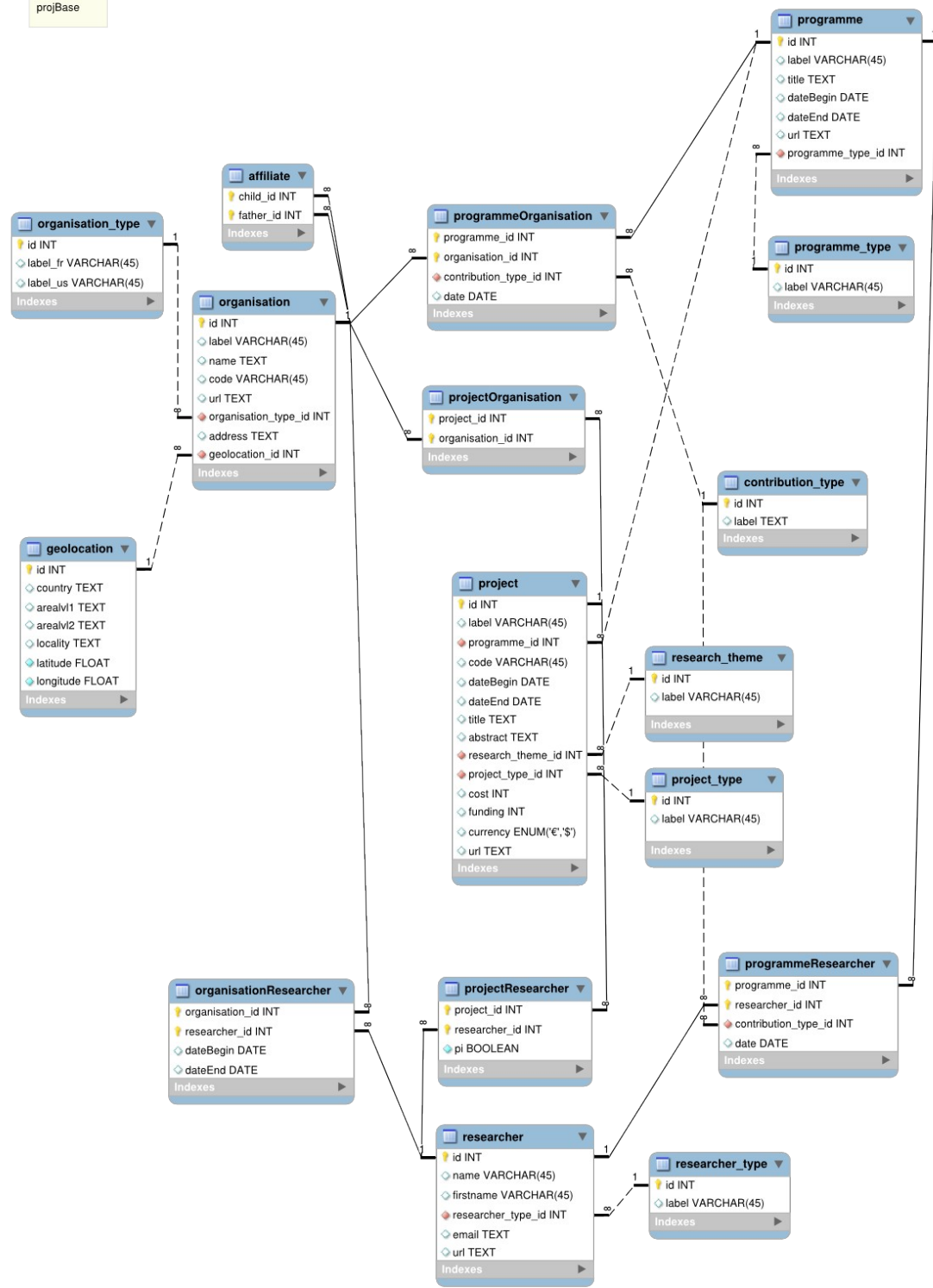
# PROJBASE



# Structure



projBase





# Importation via le frontend

projBase/PAN-Bioptique

Import

Visualize

Stats

Edit

Export

Goto backend

## Import data

### Upload form

Separator

, [comma]

Header line ?

Yes

Text delimiter

Double quote (")

Choisissez un fichier

Aucun fichier choisi

Upload

### Instructions

Below is an example of a structured file (the column order does not matter, you will be prompted to chose your mapping with projBase objects):

Project name	Year begin	Year end	Project code	PI	Institutions
Biodiversity study	2001	2005	bdv_sdy	John Doe	INRA Lyon ;CNRS Marseille;MIT New-York

# Modifications via le backend

FrontEnd Filter

Programmes Projects Researchers Organisations

Link tables Type tables

## Programme List

<input type="checkbox"/>	Id	Label	Title	Date begin	Date end	Url	Programme type	Actions
<input type="checkbox"/>	1	progtest	Test programme	1990	2010	http://www.test.com	1	Edit  Delete
<input type="checkbox"/>	3	Şlabel	Ştitle			Şurl	1	Edit  Delete
<input type="checkbox"/>	4	FP-179269542	Open Call Program- Estonian MER	1970	2010		1	Edit  Delete
<input type="checkbox"/>	5	FP-543751394	Interregional biodiversity Programme	1970	2010		1	Edit  Delete
<input type="checkbox"/>	6	FP-120416565	ERDF National Environmental Programme	1970	2010		1	Edit  Delete
<input type="checkbox"/>	7	FP-486763115	International Biodiversity	1970	2010		1	Edit  Delete
<input type="checkbox"/>	8	FP-782230152	Postdoctoral Research Grants - ETF	2005	2010		1	Edit  Delete
<input type="checkbox"/>	9	P8145	Post Genomics	2003	2010		1	Edit  Delete
<input type="checkbox"/>	10	FP-868630200	Post-doctoral Fellowships	1970	2010		1	Edit  Delete
<input type="checkbox"/>	11	ALWOC05	Open Programme 2005 ALW	2005	2010		1	Edit  Delete
<input type="checkbox"/>	12	FP-583064000	Sixth extinction - Sixieme extinction	2009	2010		1	Edit  Delete
<input type="checkbox"/>	13	FP-461340813	Small Ecological Project (SEPG) Grants	1970	2010		1	Edit  Delete
<input type="checkbox"/>	14	FrFP-18	BiodivERSA	2005	2010		1	Edit  Delete
<input type="checkbox"/>	15	ALWGB03	Open Programme - Geo- and Biosphere 2003 ALW	2003	2010		1	Edit  Delete
<input type="checkbox"/>	16	ALWOC06	Open Programme 2006 ALW	2006	2010		1	Edit  Delete
<input type="checkbox"/>	17	FP-334092259	Georg Forster Research Fellowship	1970	2010		1	Edit  Delete
<input type="checkbox"/>	18	FP-717626667	Overseas Bursary	2007	2010		1	Edit  Delete
<input type="checkbox"/>	19	150	Integrated Ocean Drilling Programme	1970	2010		1	Edit  Delete
<input type="checkbox"/>	20	FP-980885691	CLI - Atmosphere, Climate and Climate Change	1970	2010		1	Edit  Delete
<input type="checkbox"/>	21	FP-507386291	Darwin	1970	2010		1	Edit  Delete

# Export

projBase/PAN-Bioptique

Import

Visualize

Stats

Edit

Export

Goto backend

## Export datas

This module will extract network datas from current database (**projBase\_\_biodiversa**), in various formats. You can export all the datas, or create a filter with a mysql-like syntax.

Please fill the form bellow.



### Datas selection

By default, all the datas in the current database will be exported. If you wish to filter them, click on the button bellow.



### Structure type

#### Network : nodes/links

- Project-Organisation
- Project-Researcher
- Organisation-Project
- Researcher-Project

#### Raw datas : table

- Project
- Reasearcher
- Organisation



### Export format

Choose an export format

**Biodiversa**

[Search](#)

[Advanced Search ...](#)

[Manual](#)

[Feedback](#)

[Registration](#)

[Login](#)

You are here : » [Advanced Search Projects](#) » [Project Details](#)

## PROJECT DETAILS

**Project ID:** PRO-014

**Project Title:** Vascular freshwater plants

**Institution:** sepa

**Budget:**

**Manager Name:** Eva Wallén

**Status:**

**Profile Status:**

**Starting date:**

**Ending date:**

**URL:**

## Abstract

The project will focus on: 1. Patterns based on species characters a) Explore patterns of species characters among successfully established aquatic vascular plants, and particularly those of a weedy character, by quantitative ranking of attributes decisive for dispersal, fecundity, tolerance of extreme ranges of abiotic variables and grazer resistance. An overview of the characteristics of introduced species, linked to aquatic habitats in Sweden (n=119) will be included. Special emphasis will be on the mode of reproduction since the initial number of propagules will be critical to survival and multiplication of individuals and thus to the risk of potential ecological effects. There are some recordings made of some of the serious weeds in Swedish waters which may serve as useful background material. b) List likely future risk species causing problems mainly in Europe, considering similarities with the Swedish climate, by the use of patterns of characters for those species compared to species used in the aquaria-trade, aqua-culture and gardening. Investigate existing grazers on those species in their native areas, and if few, elucidate if similar species exist in Sweden, and their specificity in choice of food. Compilation of possible infections with an impact on the spreading of invasive species (cf. the infection causing loss of Red water-lilies in some Swedish forest lakes e.g. Fagertärn). c) Use patterns of species characters to elucidate growth requirements and time of growth maxima of some invasive life-forms by experiments. Several of the serious weedy life-forms need a better understanding of their mode of reproduction. The Yellow floating heart has, for example, the ability to produce seeds but seems to have a vegetative propagation as an alien in Sweden. Experiments studying dispersal of vegetative fragments of some serious weeds will be performed where the prerequisites for settling, rhizome growth and further expansion are especially important to throw light upon. Distribution ranges/ rates of dispersal will be compared with invasiveness of the species in question in the case of data availability. 2. Tolerance tests Selection of some successfully established weeds preferably representing different life-forms and with different functional roles in the ecosystem for tolerance experiments concerning water fluctuation, temperature, gas ventilation, light conditions and nutrient requirements. Introduced species may be genetically transformed and that can certainly increase the risk of ecological effects (cf. the genus *Caulerpa* in the Mediterranean Sea). Disposition among some selected species for hybridization will also be tested. 3. Patterns based on site characters The probability of dispersal for an alien species from the site of introduction

# Méthode

## Grabbing

HTML → Texte formaté

## Parsing

Texte formaté → Instruction SQL

## Indexation

SQL → Base de donnée

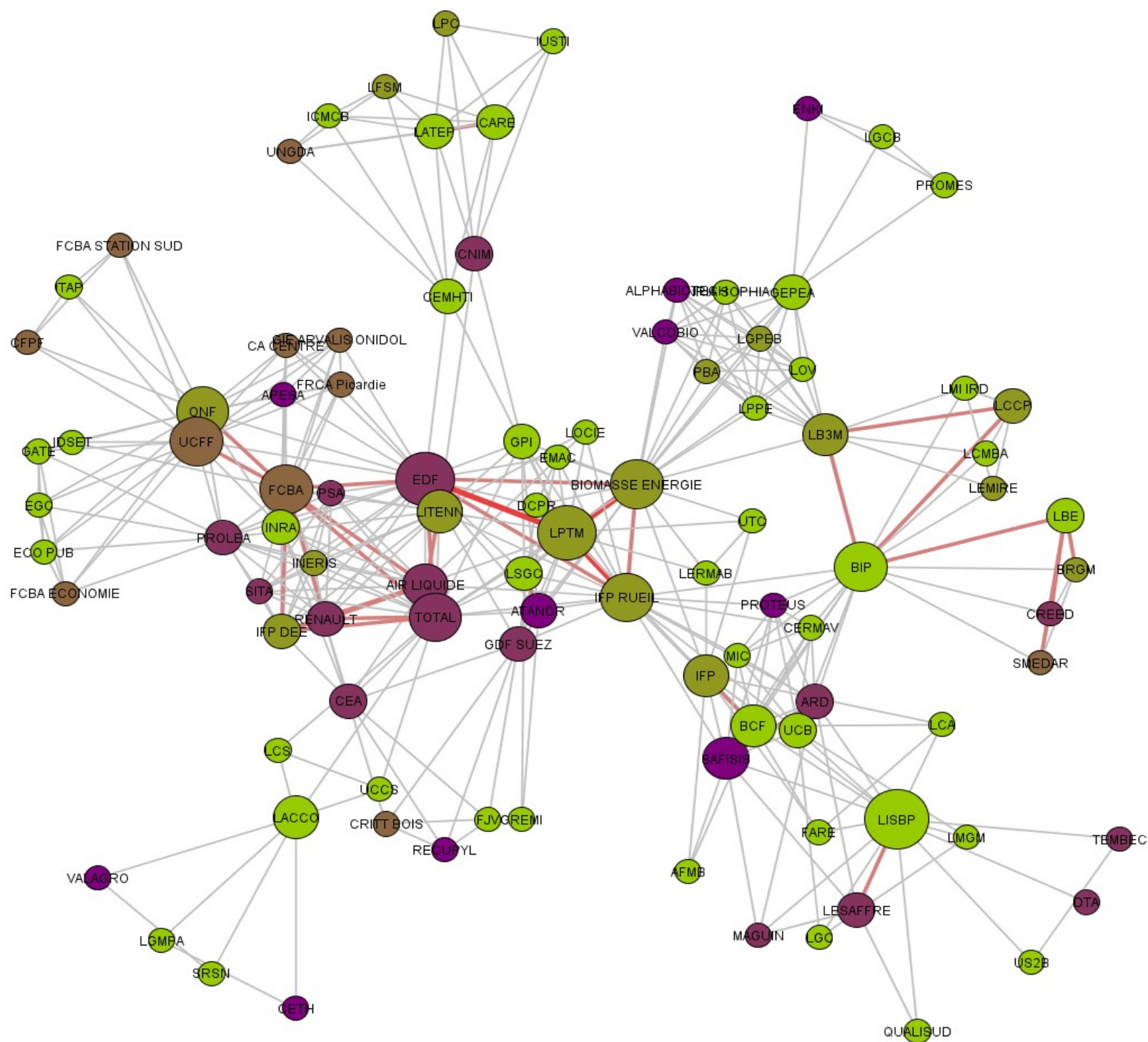
## Nettoyage

Base de donnée → Normalisation

## Exports

- Timeline
- Cartes réseaux organisations
- Cartes socio-sémantiques

**Variété des exports donnant prise aux analyses sociologiques**

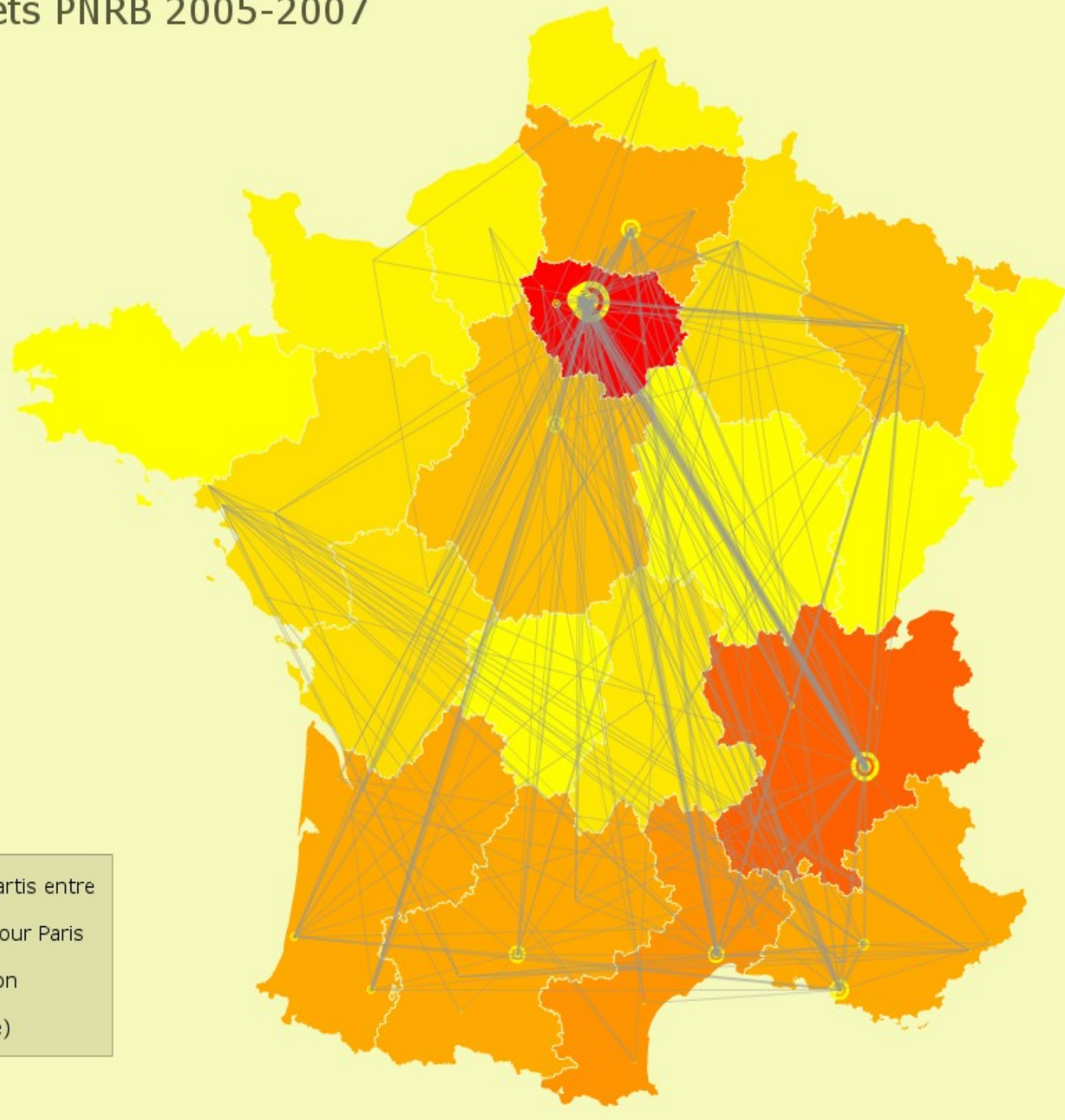
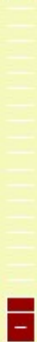


Partenariats projets entre laboratoires (outil visone) –  
 source : programme PNRB – projet bioenergies





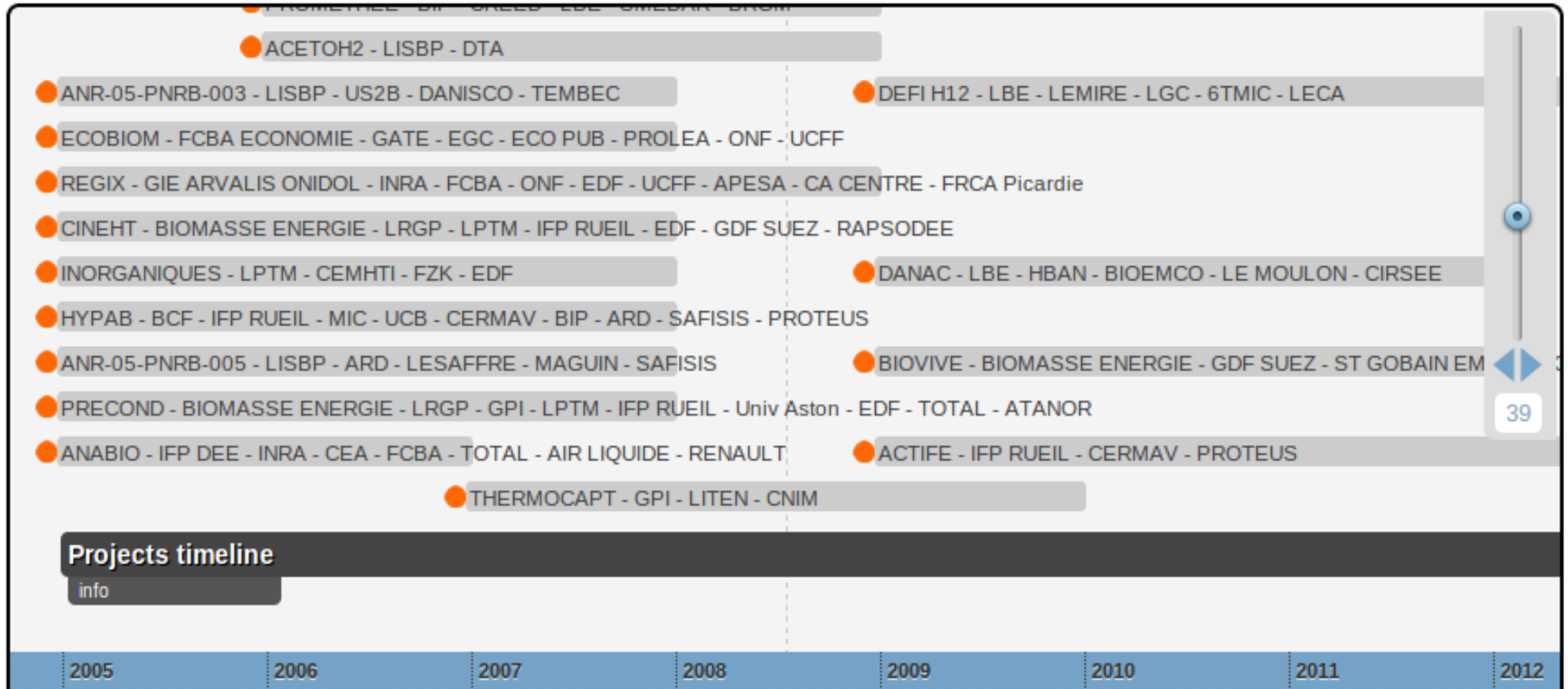
# Les projets PNRB 2005-2007

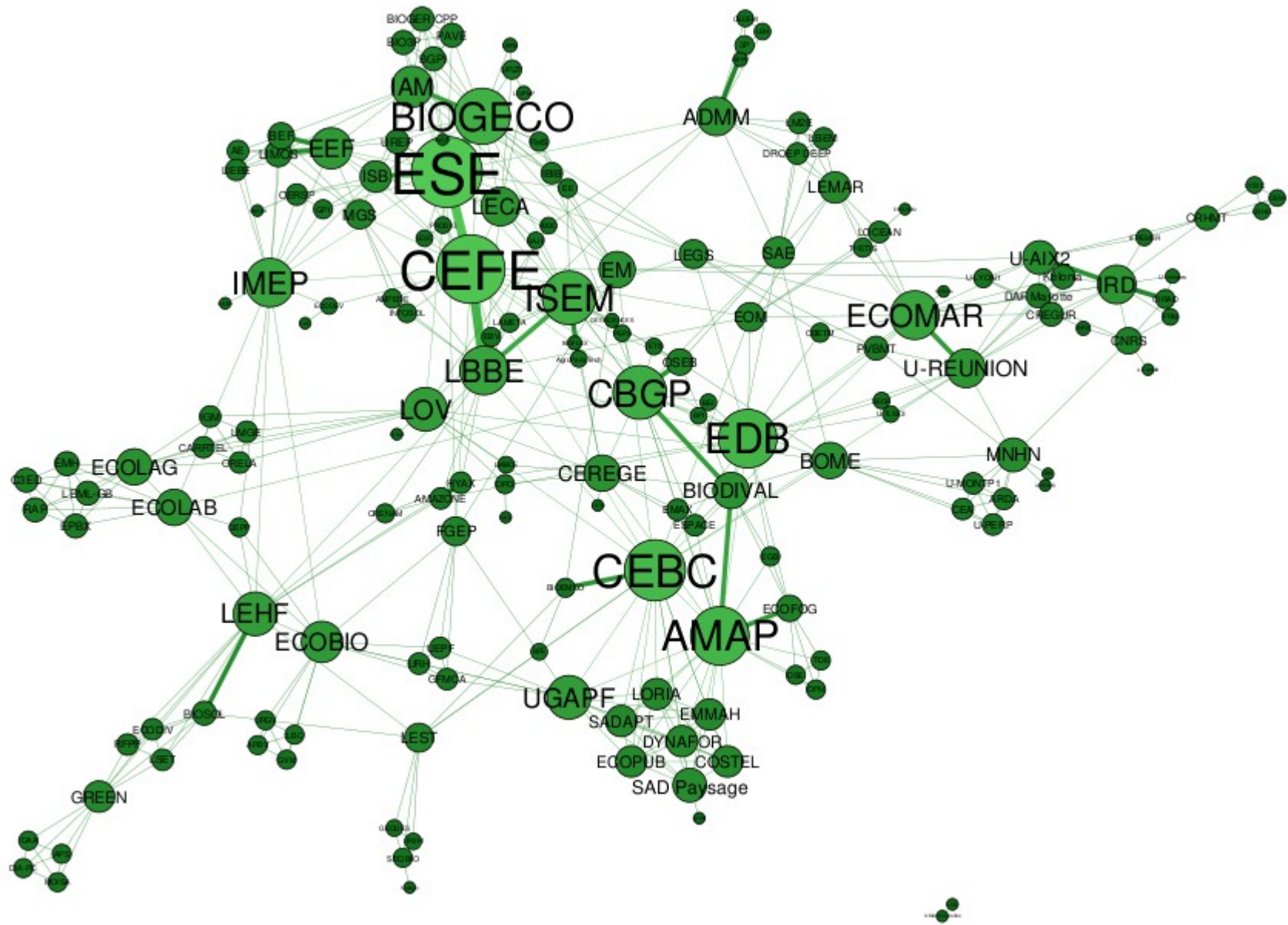


Les 32 projets sont répartis entre  
1 projet par ville et 14 pour Paris

- 0 projet dans cette region
- 24 projets (Ile de France)

# Timeline

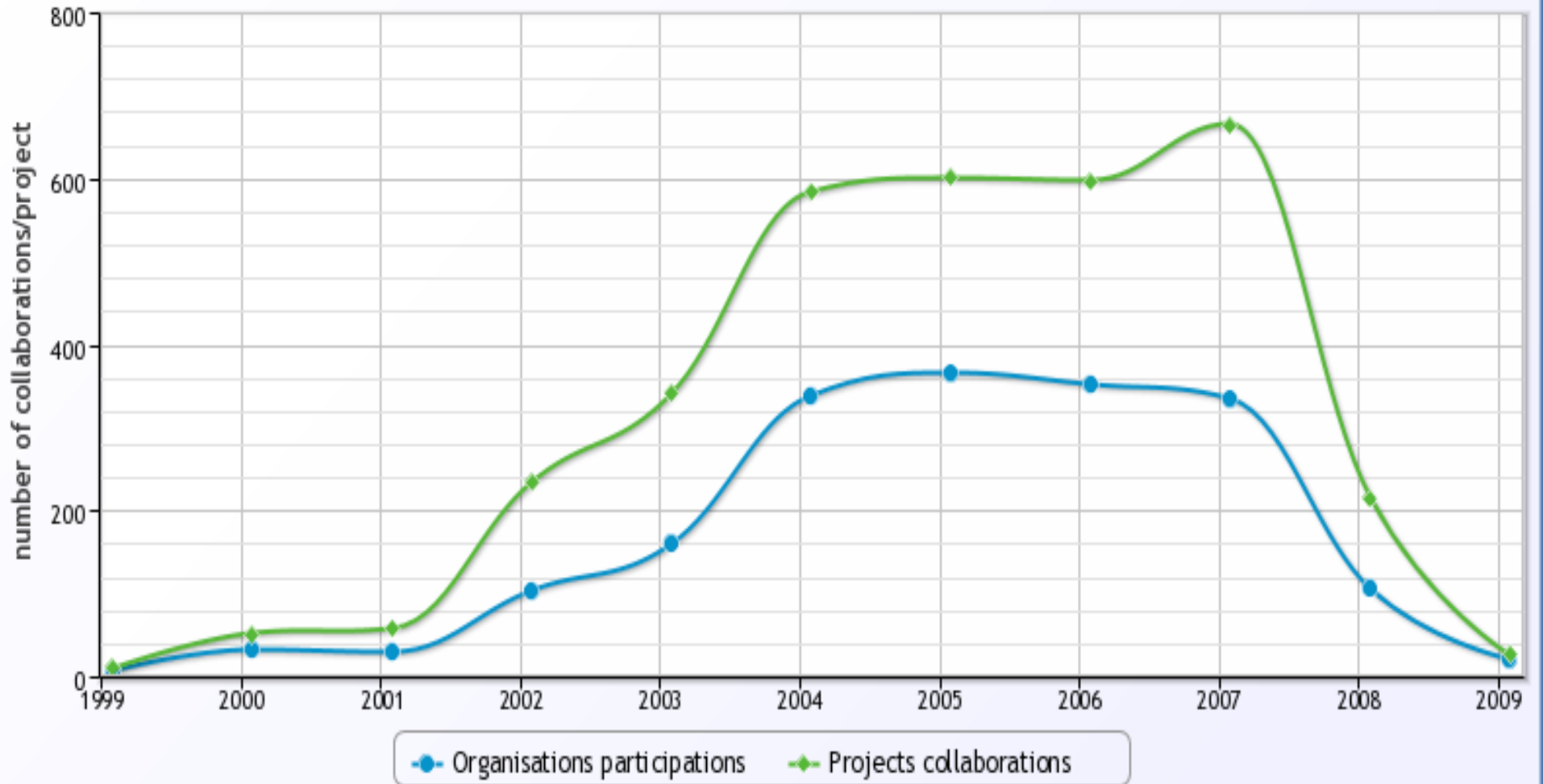




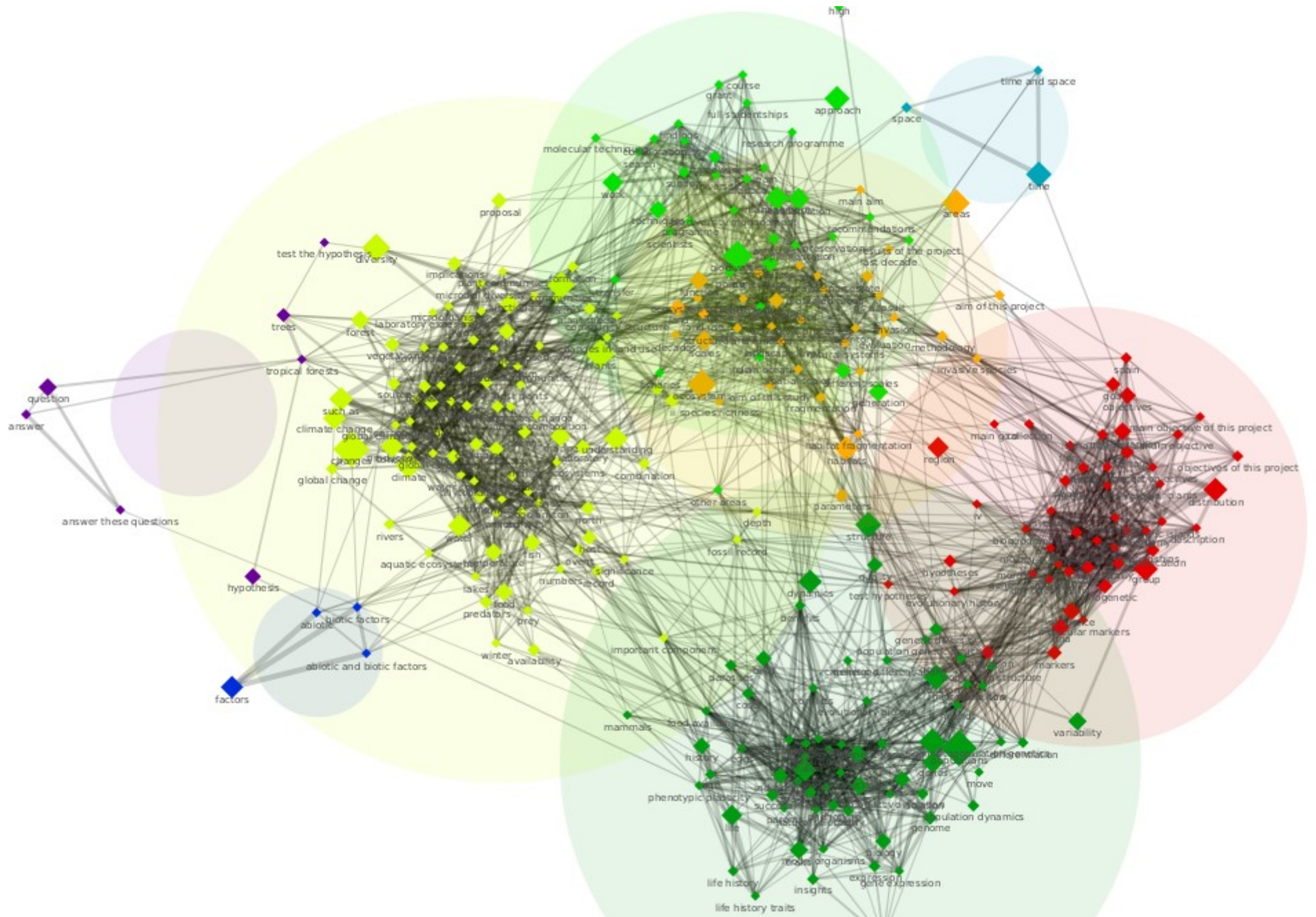
Partenariats projets entre laboratoires (source biodiversa)

## Project collaborations

Number of project collaborations by year







Réseau sémantique (source abstract projets - biodiversa)

# Perspectives

Généralisation des outils

Adaptabilité à des usages proches (par ex: analyse des participations à comités)

Amélioration de l'accessibilité par le biais de l'interfaçage

Analyses de sous-corpus projet (connexion à la plateforme)

Mise à disposition à l'INRA