



Mapping patient path in the Pediatric Emergency Department: A workflow model driven approach

Inès Ajmi, Hayfa Zgaya, Lotfi Gammoudi, Slim Hammadi, Alain Martinot, Régis Beuscart, Jean Marie-Renard

► To cite this version:

Inès Ajmi, Hayfa Zgaya, Lotfi Gammoudi, Slim Hammadi, Alain Martinot, et al.. Mapping patient path in the Pediatric Emergency Department: A workflow model driven approach. IEEE Journal of Biomedical and Health Informatics, 2014. hal-01713635

HAL Id: hal-01713635

<https://hal.science/hal-01713635>

Submitted on 5 Mar 2018

HAL is a multi-disciplinary open access archive for the deposit and dissemination of scientific research documents, whether they are published or not. The documents may come from teaching and research institutions in France or abroad, or from public or private research centers.

L'archive ouverte pluridisciplinaire **HAL**, est destinée au dépôt et à la diffusion de documents scientifiques de niveau recherche, publiés ou non, émanant des établissements d'enseignement et de recherche français ou étrangers, des laboratoires publics ou privés.

Mapping patient path in the Pediatric Emergency Department: A workflow model driven approach

Ines Ajmi^(b), Hayfa Zgaya^(a), Lotfi Gammoudi^(b), Slim Hammadi^(b), Alain Martinot^(c), Régis Beuscart^(a), Jean-Marie Renard^(a)

(a) EA2694 University Lille 2 -
France

{hayfa.zgaya, jean-marie.renard, regis.beuscart}@univ-lille2.fr

(b) LAGIS UMR CNRS 8219
Ecole Centrale de Lille – France

{ines.ajmi, lotfi.gammoudi, slim.hammadi}@ec-lille.fr

(c) PED of CHR Lille
alain.martinot@chru-lille.fr

Abstract The Workflow models of the patient journey in a Pediatric Emergency Department (PED) seems to be an effective approach to develop an accurate and complete representation of the PED processes. This model can drive the collection of comprehensive quantitative and qualitative service delivery and patient treatment data as an evidence base for the PED service planning. Our objective in this study is to identify tension indicators and bottlenecks that contribute to overcrowding. The greatest source of delay in patient flow is the waiting time from the health care request, and especially the bed request to exit from the PED for hospital admission. It represented 70% of the time that these patients occupied in the PED waiting rooms. The use of real data to construct the Workflow model of the patient path is effective in identifying sources of delay in patient flow, and aspects of the PED activity that could be improved. The development of this model was based on accurate visits made in the PED of the Regional University Hospital Center (CHRU) of Lille (France). This modeling, which has to represent most faithfully possible the reality of the PED of CHRU of Lille, is necessary. It must be enough detailed to produce an analysis allowing to identify the dysfunctions of the PED and also to propose and to estimate prevention indicators of tensions. Our survey is integrated into the French National Research Agency project, titled: “Hospital: optimization, simulation and avoidance of strain” (ANR HOST)¹.

¹ ANR-11-TecSan-010

Keywords PED, workflow, modeling, peak of activity, crowding indicators.

1 Introduction

In many countries, Emergency Departments are facing problems associated with increased demand in their services [1] [18,19,20]. The arrival patient flow to the emergency department is stochastic and keeps increasing. This rise has generated a strategic interest in optimizing the technical and human resources while mastering the costs [3]. Especially, Pediatric Emergency Departments (PEDs) have limited resources and/or staff trained, in addition of busy and noisy environment, combined with acuity. This situation creates a set of unique challenges for the patient, family, and care providers [15,16,17].

This problematic is the main challenge of the HOST ANR French project. The objective is to elaborate an innovative methodological approach for the anticipation of the tensions of the complex care production system and more especially of the emergency paths in the PED of the CHRU of Lille in France. The problematic of strategy, the performance assessment and traceability of the patient course are integrated into the suggested approaches.

The scientific fallouts expected of this project are:

- A prospective vision of the modeling and the monitoring of global PED activity handling system.
- A good tool to anticipate the tensions of the PED.
- A scheduling tool for the programmed and not programmed health tasks, taking into account the medical staff skills.
- The fallouts for emergency paths actors will consist in establishing the methods and operational tools allowing:
 - To bring the recommendations for the emergency paths conception and reengineering for health establishments,
 - To improve the handling efficiency and the quality of the service returned to the patient,
 - To assure a better internal and external coordination with the other actors of the emergency path when the tensions can't be avoided.

Our work represents the first step of the national ANR HOST project realization and discusses the emergency handling system. Modeling patients' paths at PED is faced with a high amount of complexity. This complexity stems from the inherent dynamics of the processes and the distributed organization structure of hospitals, as they are divided into several autonomous wards and ancillary units. For treatment, patients visit different units according to their illness. However, the pathway of the patients through the Pediatric Emergency Department (PED) is confronted with uncertainties. Because it is in the nature of diagnostics to gain additional information about the patients' diseases, the necessary medical treatments are often

not completely determined at the beginning of the treatment process. Further, the duration of the examinations and treatments are stochastic, due to the individuality of the patients. Additional problems for the patient-modeling in PED arise from complications and emergencies. The immediate need of treatment for emergency patients causes disturbances in the schedule. Complications, which may occur during a treatment, result in waiting times and changed pathways for other patients. This results in variable pathways and stochastic processing times.

The objective of this paper is to provide a complete picture of the PED delivery processes and detailed data on all aspects of the patient journey in order to identify bottlenecks that potentially contribute to overcrowding. For that, we study and analyze the patients' paths in the PED of CHR of Lille in France, focusing on the identification of the service dysfunctions.

The PED staff perceived a number of problems in the management of the PED processes which generate peaks of activity. That's why we have to look for ways to model and then to optimize the PED processes within an environment of increasing demand. To achieve this goal, it is imperative that the associated activities are accurately identified and fully understood.

Modeling of the PED process to investigate problems such as long waiting times and delays in admissions have been extensively reported. PEDs have investigated and adopted a variety of process modeling approaches from business and industry sectors as well as academic disciplines, in an effort to improve efficiency and increase productivity [21; 22; 23; 4].

In this paper, modeling has been used to create an accurate picture of the patient journey within the PED and to clearly depict activities of particular concern to the PED staff.

In this context, workflow methodology has showed its efficiency improving the performance of complex business processes and especially health processes [4].

These latter are of significant importance to the early design phase of a software development project since they provide a procedural view on the business. A fundamental problem in this context is the selection of an appropriate notation for defining business process models. Several flowchart-like languages are currently used in practice, including languages like Event-driven Process Chains (EPCs) [40], YAWL van der Aalst and ter Hofstede, 2005, or diagrams offered by the Unified Modelling Language (UML), most notably Activity Diagrams [27]. Recently, standardization efforts between the Object Management Group (OMG) and the Business Process Management Initiative (BPMI) have led to the definition of the Business Process Model and Notation (BPMN) (OMG, 2011). Among the alternatives investigated by [24], presenting a business process twice, in the sequence of a written use case set followed by its equivalent set of BPMN diagrams, was the most effective way to build up comprehension of the process in question. Indeed, we chose the BPMN graphical language in order to model in an efficient way the PED processes.

In this paper, we explain how we capture the data necessary to build BPMN models to represent the patient journey through the PED. We then describe how analysis of these models enabled subsequent models (sub-processes) to be constructed

to provide more detailed views of the patient journey and sources of delays to be identified.

Therefore, the main contribution of this paper is the introduction of a novel model Workflow, approach based on the optimization of the patient path in the Pediatric Emergency department

A state of the art workflow system in the field of health will be presented in the second section. In section **Erreur ! Source du renvoi introuvable.**, we describe the methods of workflow system in the PED. Experiment results are presented in section IV. After describing the results of the model Workflow in section **Erreur ! Source du renvoi introuvable.**, we present in section **Erreur ! Source du renvoi introuvable.** a discussion concerning patient path in the PED. Many limitations are presented in section **Erreur ! Source du renvoi introuvable.**, This article is closed with conclusions and an outlook to further work.

2 State of the art

2.1. Emergency department Management

The care of patients occurs in different modes related to the type of needed care [29]: planned treatment, care requiring (or not requiring) a hospital (ambulatory) care and unscheduled care in an emergency (or non-emergency). The emergency medical assistance is an extremely important and sensitive issue. Solutions must be developed not only in French but also in Europe where the same problems exist [25], [26]. Thus, all European emergency medical assistance services met on 14 and 15 March 2005 in Paris to discuss their issues and how to improve their activities. More than 350 participants from 30 European countries participated in this discussion. The complexity of the concerned problems illustrated by the diversity [12] of the solutions (specialized call centers, dedicated emergency units, mobile crisis teams...) without any satisfactory results. The United Kingdom, to cope with these difficulties, has established protocols for management of the emergency, which now allow the National Health Service 2 (NHS) display care delay less than 4 hours in a system previously heavily criticized for the length of its waiting time [13]. These protocols are accompanied by a reconfiguration of the activities, a redistribution of tasks between professional groups and the development of tools for communication and exchange. Furthermore, analysis of the system of health care services in Quebec and the transformation of the Montreal Network show that the organization of services has not been able to adequately adapt to the rapid changes and budgetary constraints imposed on networks supported (Centre National Emergency Coordination (CCNU) (2002), Emergency Management Guide). The Quebec, such as France [28], including the creation of a guide to management and organization of the emergency order to flatten the process and to standardize key stages: triage, patient observation time, demand consultation modality integration of personal processes, utilization management beds, liaising with teams. Thus,

² <http://www.droit-medical.com/perspectives/9-variations/418-national-health-service-nhs>

the discussed issues cover the scientific, technical, social, informational and human. Thus, a multidisciplinary approach is needed to mobilize expertise from different disciplines. It will allow for both the diagnosis and the architecture design and management models of the hospital crowding for their evaluation, to adopt a critical approach to multi-view.

The Emergency department (ED) crowding is an international problem that may affect the quality and access of health care. There are different commonly studied causes, effects and solutions for the ED crowding. Firstly, the studied causes include non-urgent visits, “frequent-flyer” patients, influenza season, inadequate staffing, inpatient boarding, and hospital bed shortages. Secondly, the studied effects correspond to patient mortality, transport delays, treatment delays, ambulance diversion, patient elopement, and financial effect. Finally, the studied solutions of crowding include additional personnel, observation units, hospital bed access, non-urgent referrals, ambulance diversion, destination control, crowding measures and queuing theory. The results illustrated the complex, multifaceted characteristics of the ED crowding problem. Additional high-quality studies may provide valuable contributions toward better understanding and alleviating the daily crisis.

2.2. The Crowding situations

Many reports and studies provide a status table for the health system in moral, demographic and financial crisis, [5,6], [7]. [8,9,10] This situation is the result of the accumulation of new constraints combined with the high structure rigidity. Thus, health systems and ED meet increasingly difficulties to carry out their missions. However, there is a current overall change of the hospital and health system in French. The enhancement of the patient quality of care depends on an effective management of the health expense, the risk and the quality management. This has resulted, for many years, by various strategic and operational actions in the area of health care. An important lever for success of this evolution is the optimization of the organization

In the management of the health care production systems, the control of the hospital flows and the crowding anticipations are major issues. The awareness of this issue is becoming stronger. Thus, the problems observed at present in hospital services and care sectors are largely due to mismanagement of patients flow.

The actors in the healthcare organizations must also overcome the problems associated to process flows (ie, patient information, products, equipment's) and restructuring. This latter corresponds internally to the resources pooling and especially to the technical platform. However, health professionals are neither prepared nor trained to solve such problems, it appears that they are poor in methodologies and tools for decision support and management adapted to the requirements involved in their future modes of operation.

Two main situations represent the emergence of major tensions and justify thinking about avoidance strategies because they have impacts in the economic, social and human health regulatory contexts. Thus, such a system should contribute to:

1. To best limit the peaks of activity of medical personnel and material resources. The best is to effectively organize the general work plan by distributing the most judicious manner possible tasks of care between health care providers, taking into account the skills and material resources to care. This prevents clogging of health facilities in order to limit excessive waiting times for patients by ensuring the quality of their care and safety and to balance the flows between institutions incoming patients from neighboring health directing them to the nearest establishment and less congested
2. Limit the trigger white plan is a specific emergency institutions public or private health level. It is intended to deal with an exceptional situation or an increased activity of a hospital and must help organize the reception of a mass casualty accident, disaster, epidemic or a murderer and sustainable climate event. The white-heavy plan is to develop the economic and regulatory perspective, identifies ways that can be mobilized, defines the conditions of their employment, provides the means by which the necessary personnel can be maintained on site and where appropriate, recalled when the situation warrants.

In setting up an effective collaboration between clinicians, health care, academic and industrial researchers, it is possible to model the tension and propose anticipation.

The first step is to notify the existence of a voltage to the hospital. This involves identifying and modeling indicators of the voltage at the hospital. Then propose a system capable of providing in advance taking into account indicators.

The second step of this work is to provide avoidance strategies tensions. To do this, it is necessary to assess the relevance of forecasting models proposed previously and then develop recommendations for avoidance strategies tensions.

2.3. The emergency path in the PED

Emergency Path is a longitudinal organization of the patient's handling. It is not a structure but an operative concept. The patient flow can vary from patient to patient based on acuity level and diagnosis[11] [12]. The hospital establishments are chronically confronted to a problematic for which no satisfying answer exists at the present time. This problematic is resulting from the permanent interferences between the programmed and the non-programmed activity, and more especially the urgent non programmed activity. We can define two operational concepts that will intervene in the description of the PED: 1) The incoming flows: programmed or non-programmed, with almost periodic or uncertain variation, 2) The retiring flows: constituting the downstream of the PED. The emergency path, the incoming and the retiring flows are three concepts that describe the PED like a complex

system in interaction. We proceeded to the modeling of the survey project at the PED of the CHRU of Lille. The phases of Workflow of the PED modeling are:

- Description of the features of each element of the global process and its sub-processes in the PED,
- Modeling the PED (flow and resources organization) and its interactions with the other internal components of the CHRU of Lille,
- To define a typology of the patients admitted in the PED of the CHRU of Lille.

3 Methods

Was implemented a structured method research design which comprised five major steps:

- 1) Several visits were piloted in the PED of CHR of Lille with researchers and physicians (the HOST ANR project partners) to build a model of the patient path and PED treatment processes as the basis for a patient mapping form to collect data;
- 2) Each Research Assistant (RA) partner of the project spent a continuous 10 days mapping exercise during which they independently observed and manually recorded patient journeys through the PED for a sample of presentations;
- 3) In order to validate an all-day observations, a PED staff meets the research assistant regarding their observations of patient flow;
- 4) The analysis of data obtained during steps 1-3 to construct dynamic models of the process. This model will be constructed with the BPMN graphical language which is an international standard.
- 5) Model simulation and its comparison with the real scenarios of patient path. The goal of this step is to optimize the model.

The methodology included two important design characteristics that distinguished it from published PED patient flow modeling projects:

The first design characteristic

Previous observational measures of healthcare worker fail to provide adequate standard operating procedures [2]. Thus, this study uses an observational tool, done by the EVALAB partner of our HOST ANR project, in a way that addresses these deficiencies. In this context, EVALAB provides an ergonomic interface tool which allows an effective collect of data by observations.

This EVALAB observation tool is one of the essential elements for success of our project to build the most realistic model for the PED functioning. This tool takes into account the effective utility and usability aspects which ensures user adoption. The most effective way of supporting these aspects is the compliance with the ISO standard EN 9241-210: "Process of human-centered design for interactive systems" (Figure 1).

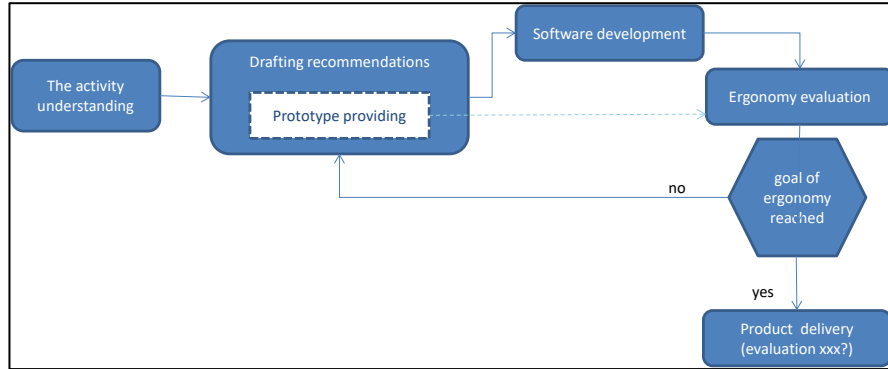


Figure 1 : The ISO standard EN 9241-210

This tool guarantees data impartiality, data reliability, and obtaining important data that was not recorded in the PED CHR information system. A crucial example of key data not routinely collected was the waiting time, the visit time of the doctor to the patient and also the time at which a bed was assigned by the hospital bed manager, following a request for patient admission from the PED.

The second design characteristic

The use of the workflow approach and especially the BPMN graphical tool enables the verification and validation of the processes directed with the PED staff. The Workflow produces a model that describes precisely the activities flow in the patient path. Also, by using an internationally standardized language (BPMN), the benefits of common understanding with precise semantics are realized. This language is based on five basic features (Figure 2): the events, the gateways, the activities, the connectors and the pools (or lanes) to support processes.

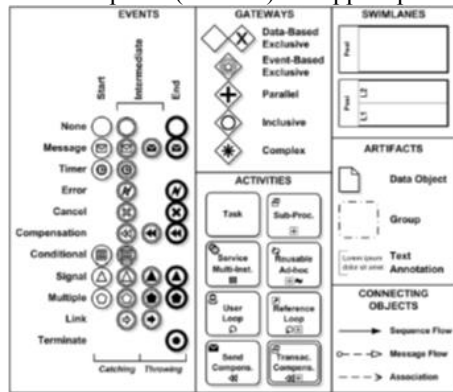


Figure 2. The BPMN graphical language

3.1 The design of the workflow activity diagram and the data collection form

Several all-day workshops were held between September 2011 and September 2012 with a medical staff representative of all roles in the PED of CHR of Lille. All aspects of patient treatment and management processes were examined, and staff perceptions of problems and issues that potentially inhibit patient flow recorded.

In this context, and according to this information, we developed a workflow activity diagram to model the sequence of cares' tasks and actions associated with each stage of the patient path through the PED. The model was verified by an expert PED medical staff that participated in the workshop. So, the workflow activity diagram was modified to show the main Decision Points (DPs) of a patient path in the PED. These DPs allow the reorientation of the patient towards, for example, the imaging, the intensive care, etc. Then, the model was validated by the head of the PED service. No changes were made as a result of validation. The data collection form was then constructed for the patient mapping exercise, using the workflow activity diagram as a basis for the layout of the form. For example, the Figure 3 corresponds to the recording interface form used by nurses in order to record patients coming to the PED.

For each step of the patient journey, expressed within the Workflow model, we developed the correspondent interface form to minimize the possibility of recording errors. So the data record can be done in real time according to the progress of the patient path process in the PED. The Workflow model is connected to a real data base which allows the data storage. This data, collected through the interfaces, will be useful for future analyses which will be displayed in output simulation interfaces.

The screenshot shows a web-based form for patient registration. At the top left is the 'bonitaopen solution' logo. At the top right, there are links for 'admin | Logout' and a 'SUP' button. The main title of the form is 'ENREGISTRER LE PATIENT'. Below this, there is a status bar showing 'From: 3:08 PM 7/15/13', 'To:', and 'Priority: Normal'. The form contains several input fields: 'Nom' (Valentier), 'Prénom' (Julie), 'Né(e) le' (2013 July 15), 'Tel', 'Accompagnants', 'Dap', 'Informations', 'Antécédents', and 'Motifs'. There are also radio buttons for 'dossier' with options 'Médical', 'Chirurgie', and 'autre'. A 'valider' button is located at the bottom center of the form.

Figure 3. The example of the recording interface form of the patients

3.2. Quantitative data collection

Patient flow mapping through the PED was carried out in a continuous 2 years period from January 2011 to December 2012. The RAs manually tracked patients in real-time as they proceeded through the PED and recorded activity times, patient characteristics and treatment details on the data collection forms. All observations were made independently of routine PED data collection mechanisms. For each patient, the workflow model generates the correspondent process instance. Furthermore, the workflow engine can take into account patients' processes overlap. So human and material resources are shared correctly between simultaneous patients and data is collected through devoted separated interfaces. The 2 years data collection was approved by the ANR HOST consortium.

3.3. Qualitative data collection

One month after the design of the patient flow mapping, a focus group composed of a PED medical staff and a research medical team, directed by our EVALAB partner, was held in order to obtain additional qualitative data. Some parts of the model are correct but others were improved according to some observations that not have been included in the collected data.

3.4. Data analysis

The dataset obtained from the data collection exercise (after improvement) will be injected in the simulation module of our workflow tool Bonita software. Simulation parameters can be chosen according to a special load profile (Figure 6):

- Injection period : corresponds to the time window of the staff medical activity ;
- Number of the instances: corresponds to the number of patient cases distributed with a repartition type.
- Repartition type: there are two kinds of repartitions: The constant repartition: dispatches instances injection in a constant way along the period and the direct repartition which dispatches instances injection in the start of the period.

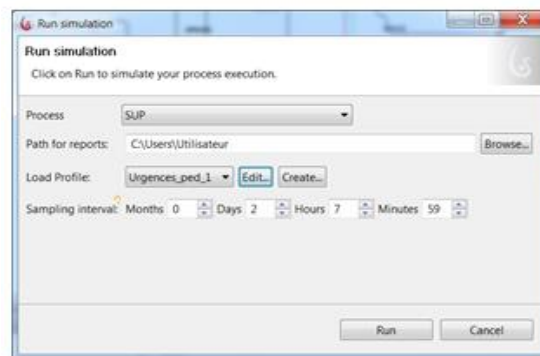


Figure 4. Simulation load profile

Thanks to this simulation tool, we can measure the waiting time, each resource's consumption, and at any time, we can find the service states for each patient process for the entire patient journey in the PED.

4. Results

4.1. The workflow model and the patient mapping form

4.1.1 Global model and decision points

The workflow model (Figure 5) shows the major stages, activities and actions of the patient journey in the PED as identified by the workshop participants managed by EVALAB partner. There are three major stages: Stage 1, (Patient Arrival and Initial Assessment), Stage 2, (Patient (re)orientation and treatment) and Stage 3 (Patient Destinations). The patient can be orientated or reoriented to one of these units knowing that some of them are represented by a sub-process in the global process workflow model:

- Box Unit (BU), corresponding to an In-cubicle treatment ;
- Sub-process External Care Unit (ECU),
- Sub-process Unit of Short Term Hospitalization (USTH),
- Traditional Hospitalization Unit (THU),
- Sub-process Vital Emergency care Unit (VEU).

On another hand, we note the uncertain environment in the patients care in the PED and the risks that can emerge during their paths. This uncertainty confirms the complexity of the emergency care system. It is also interesting to see that some activities of these processes are decisional. These decisions are expressed in the model by six Synchronization Points SP_i ($1 \leq i \leq 6$) called gateways, in the Figure 5. These graphical items are used to control the behavior of the sequence flows within a process. The decision points SP_i ($1 \leq i \leq 6$) of the global workflow model are detailed as follows:

- SP1: shows the kind of the arrival perceived by the patient: urgent and not urgent. If the patient supposes that his case is urgent, he goes directly to the reception and orientation desk. Otherwise he goes to the registration one.
- SP2: controls the registration and the orientation of the patients.
- SP3: has the role to direct the patient to vital emergency or waiting room.
- SP4: this point is central because it represents the input bottleneck point of the global model. It directs the patients into the suitable unit care depending on their pathologies.
- SP5: this point is important because it represents the output bottleneck point of the global model. It redirects the patients into one of these places:
 - Waiting room: in this case, the patient has to wait before the continuity of his care. For example, he has to wait the results of the MRI

These decision points, at which the patient journey is dependent on a combination of treatment characteristics and the availability of physical resources, are represented by gateways in the global model.

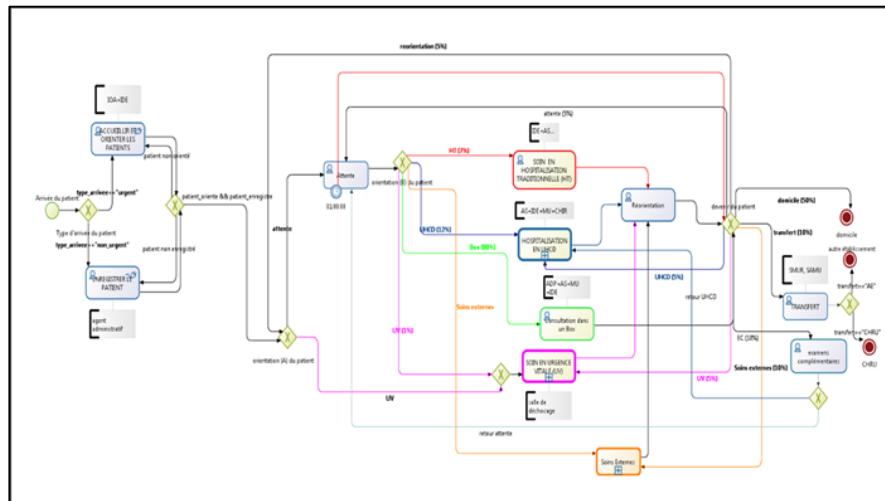


Figure 5 Global Workflow model for the PED

4.1.2 Sub-processes

a) The External Care Unit (ECU)

The sub-process corresponding to the ECU is presented by the Figure 6. The operations scheduled in these two rooms (suture and platter rooms) require medical re-

sources and are previously planned. So these operations are not really urgent and they represent a degree of freedom in the decision process when some perturbations occur in the PED.

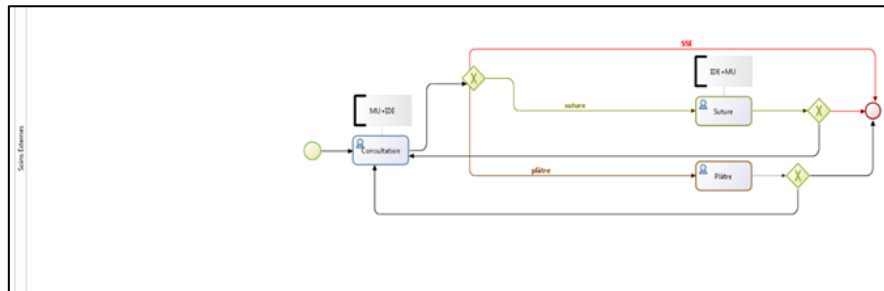


Figure 6. Workflow Model of the ECU

b) The Vital Emergency care Unit (VEU)

The sub-process corresponding to the VEU is presented by the Figure 7. This room is a vital emergency venue within the PED where the patients are examined in order to assess their vital signs. The results of these assessments allow the medical staff to direct the patient to intensive care if necessary alerting the reanimation team. Indeed the monitoring of the health of the patients is necessary in this unit. The equipment of the vital emergency room is checked daily and after each use.

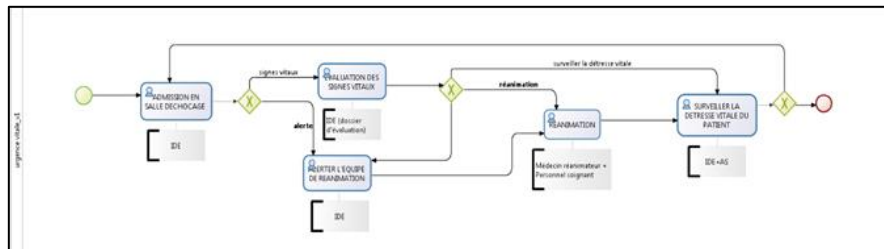


Figure 7. Workflow Model of the VEU

c) The Unit of Short Term Hospitalized (USTH)

The USTH, presented by the Figure 8, receives patients requiring observation period and or require additional tests and /or admitted to the operating room for possible surgery. The patient in the USTH monopolizes human resources in many cycles' periods. Indeed, the length of the smoothing period of the peak of activity of the medical staff depends on these cycles' periods. At the end of the USTH process, the patient leaves the PED and he is returned at home, admitted to another PED or admitted to another care establishment.

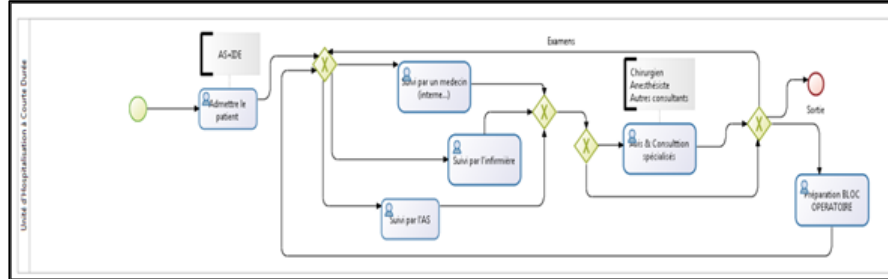


Figure 8. Workflow Model of the USTH

4.2. Quantitative data collection

Due to the 2-years data collection in the PED of the CHRU of Lille, we have information about 23150 patients' admissions in 2011 (Table 1) and 24039 in 2012 (Table 2). In order to protect individual privacy, the patients should remain anonymous. So we made sure that the data do not contain any identifying information about them.

Table 1. Anonymous data collection in 2011

A	B	C	D	E	F	G	H	I	J	K	L	M	N	O	P	Q	R	S	T	U	V
date d'arrivée	adresseur par moyen d'arrivée	origine	temps de date de sortie	traucac	statut	âge en mo	âge	sexe	diagnostic principal	CCMU	imagerie	échographie	scanner	radiologie	GEMM	destination	HOS/SORT	biologie			
07/10/2011 07:58 NON	perso	domicile	1h 51m	07/10/2011 08:59 H	3091 Medical	70	6 M		Douleurs abdominales	2	non	non	non	non	2	DORMILE	SORTIE	non			
17/10/2011 11:58 NON	perso	domicile	1h 20m	17/10/2011 13:20 O	3091 Chirurgie	135	11 F		CHEVILLE Entorse	2	oui	non	non	oui	2	DORMILE	SORTIE	non			
22/07/2011 19:46 NON	perso	domicile	2h 15m	22/07/2011 22:01 O	3091 Chirurgie	103	9 F		CHEVILLE Entorse	2	oui	non	non	oui	2	DORMILE	SORTIE	non			
14/11/2011 14:46 NON	POMPIERS	domicile	2h 16m	14/11/2011 17:02 O	3091 Chirurgie	142	12 M		CHEVILLE Entorse	2	oui	non	non	oui	2	DORMILE	SORTIE	non			
26/11/2011 15:10 NON	perso	domicile	2h 10m	26/11/2011 20:20 H	3091 Medical	111	9 F		CHEVILLE Entorse	2	oui	non	non	oui	2	DORMILE	SORTIE	non			
10/11/2011 17:42 NON	perso	domicile	2h 13m	10/11/2011 20:55 O	3091 Chirurgie	128	11 M		CHEVILLE Entorse	2	oui	non	non	oui	2	DORMILE	SORTIE	non			
23/12/2011 22:26 NON	perso	domicile	2h 5m	24/12/2011 00:31 O	3091 Chirurgie	158	13 M		CHEVILLE Entorse	2	oui	non	non	oui	2	DORMILE	SORTIE	non			
04/10/2011 11:52 NON	perso	domicile	2h 15m	04/10/2011 16:07 O	3091 Chirurgie	164	14 M		CHEVILLE Entorse	2	oui	non	non	oui	2	DORMILE	SORTIE	non			
06/11/2011 11:51 NON	perso	domicile	2h 51m	06/11/2011 14:42 O	3091 Chirurgie	145	12 F		CHEVILLE Entorse	2	oui	non	non	oui	2	DORMILE	SORTIE	non			
10/11/2011 15:55 NON	perso	domicile	2h 46m	10/11/2011 17:51 O	3091 Medical	105	9 M		CHEVILLE Entorse	2	oui	non	non	oui	2	DORMILE	SORTIE	non			
25/10/2011 13:49 MEDICIN TI	perso	domicile	1h 1m	25/10/2011 14:50 O	3091 Medical	95	8 M		CHEVILLE Entorse	1	non	non	non	non	2	DORMILE	SORTIE	non			
04/11/2011 18:03 MEDICIN TI	perso	domicile	2h 46m	04/11/2011 20:49 O	3091 Chirurgie	122	10 F		CHEVILLE Entorse	2	oui	non	non	oui	2	DORMILE	SORTIE	non			
09/07/2011 20:36 NON	perso	domicile	1h 42m	09/07/2011 22:21 O	3091 Chirurgie	108	9 M		CHEVILLE Entorse	2	oui	non	non	oui	2	DORMILE	SORTIE	non			
24/07/2011 20:46 NON	perso	domicile	2h 49m	24/07/2011 23:35 O	3091 Chirurgie	34	3 M		CHEVILLE Entorse	2	oui	non	non	oui	2	DORMILE	SORTIE	non			
15/07/2011 19:11	perso	domicile	2h 8m	15/07/2011 22:19 O	3091 Chirurgie	123	10 F		CHEVILLE Entorse	2	oui	non	non	oui	2	DORMILE	SORTIE	non			
29/10/2011 18:38 NON	perso	domicile	1h 42m	29/10/2011 20:20 O	3091 Chirurgie	72	6 F		CHEVILLE Entorse	2	oui	non	non	oui	2	DORMILE	SORTIE	non			
19/08/2011 15:54 NON	perso	domicile	2h 34m	19/08/2011 18:28 O	3091 Chirurgie	86	7 F		CHEVILLE Entorse	2	oui	non	non	oui	2	DORMILE	SORTIE	non			
19/08/2011 15:54 NON	perso	domicile	2h 34m	19/08/2011 18:28 O	3091 Chirurgie	86	7 F		CHEVILLE Entorse	2	oui	non	non	oui	2	DORMILE	SORTIE	non			
07/11/2011 19:11 NON	perso	domicile	2h 7m	07/11/2011 21:18 H	3091 Medical	80	7 F		CHEVILLE Entorse	2	oui	non	non	oui	2	DORMILE	SORTIE	non			
14/07/2011 16:14 NON	perso	domicile	2h 0m	14/07/2011 19:14 O	3091 Chirurgie	175	15 F		CHEVILLE Entorse	2	oui	non	non	oui	2	DORMILE	SORTIE	non			
15/11/2011 19:38	perso	domicile	2h 12m	15/11/2011 22:50	3091	122	10 M		CHEVILLE Entorse	2	oui	non	non	oui	2	DORMILE	SORTIE	non			
24/08/2011 19:12 NON	perso	domicile	1h 26m	24/08/2011 20:38 O	3091 Chirurgie	62	5 F		CHEVILLE Entorse	2	oui	non	non	oui	2	DORMILE	SORTIE	non			
24/08/2011 19:12 NON	perso	domicile	1h 26m	24/08/2011 20:38 O	3091 Chirurgie	62	5 F		CHEVILLE Entorse	2	oui	non	non	oui	2	DORMILE	SORTIE	non			
25/11/2011 11:58 NON	perso	domicile	2h 5m	25/11/2011 15:03	3091 Chirurgie	142	12 F		CHEVILLE Entorse	2	oui	non	non	oui	2	DORMILE	SORTIE	non			
14/07/2011 15:17 NON	perso	domicile	4h 4m	14/07/2011 21:21 O	3091 Chirurgie	105	13 M		CHEVILLE Entorse	2	oui	non	non	oui	3	DORMILE	SORTIE	non			
14/11/2011 18:15 NON	perso	domicile	5h 57m	15/11/2011 00:12 O	3091 Chirurgie	164	14 F		CHEVILLE Entorse	2	oui	non	non	oui	2	DORMILE	SORTIE	non			
14/10/2011 17:28 NON	perso	domicile	4h 27m	14/10/2011 21:55 O	3091 Medical	121	10 F		CHEVILLE Entorse	2	oui	non	non	oui	2	DORMILE	SORTIE	non			
23/12/2011 22:51 NON	perso	domicile	1h 52m	24/12/2011 00:43 O	3091 Chirurgie	143	12 M		CHEVILLE Entorse	2	oui	non	non	oui	2	DORMILE	SORTIE	non			
08/11/2011 15:54 NON	perso	domicile	2h 15m	08/11/2011 17:22 O	3091 Chirurgie	68	6 M		CHEVILLE Entorse	2	oui	non	non	oui	2	DORMILE	SORTIE	non			
19/08/2011 19:43 NON	perso	domicile	1h 7m	04/08/2011 20:30 O	3091 Chirurgie	167	14 M		CHEVILLE Entorse	2	oui	non	non	oui	2	DORMILE	SORTIE	non			
04/08/2011 19:43 NON	perso	domicile	1h 7m	04/08/2011 20:30 O	3091 Chirurgie	167	14 M		CHEVILLE Entorse	2	oui	non	non	oui	2	DORMILE	SORTIE	non			
10/11/2011 16:18 NON	perso	domicile	1h 57m	10/11/2011 18:15 O	3091 Chirurgie	84	7 F		CHEVILLE Entorse	2	oui	non	non	oui	2	DORMILE	SORTIE	non			
10/08/2011 10:43 NON	perso	domicile	2h 4m	10/08/2011 12:47 O	3091 Chirurgie	161	13 F		CHEVILLE Entorse	2	oui	non	non	oui	2	DORMILE	SORTIE	non			
10/08/2011 10:43 NON	perso	domicile	2h 4m	10/08/2011 12:47 O	3091 Chirurgie	161	13 F		CHEVILLE Entorse	2	oui	non	non	oui	2	DORMILE	SORTIE	non			
19/10/2011 11:28 SAMU / CEM POMPIERS	domicile	2h 0m	19/10/2011 16:37 O	3091 Chirurgie	166	14 F		CHEVILLE Entorse	2	oui	non	non	oui	2	DORMILE	SORTIE	non				
28/12/2011 20:41 NON	perso	domicile	2h 45m	28/12/2011 23:29 O	3091 Chirurgie	156	13 M		CHEVILLE Entorse	2	oui	non	non	oui	3	DORMILE	SORTIE	non			
22/11/2011 13:19 NON	perso	domicile	2h 41m	22/11/2011 15:59 O	3091 Chirurgie	143	12 F		CHEVILLE Entorse	2	oui	non	non	oui	2	DORMILE	SORTIE	non			
13/10/2011 18:17 NON	perso	domicile	2h 17m	13/10/2011 20:34 O	3091 Chirurgie	143	12 M		CHEVILLE Entorse	2	oui	non	non	oui	2	DORMILE	SORTIE	non			
16/05/2011 14:04 NON	perso	domicile	2h 4m	16/05/2011 16:47 O	3091 Medical	436	43 M		CHEVILLE Entorse	2	oui	non	non	oui	3	DORMILE	SORTIE	non			

Table 2. Anonymous data collection in 2012

num	date d'arrivée	adresser par	nom de l'arrivée	origine	nom de p'temps	date de sortie	trac CAC du séjour	statut	age en l'ère	diagnostic	CCM	imagerie	échographie	scanner	radiologie	CEMBA	destination	
1	01/01/2012 11:01	NON	MOYENS PERSONNEL SERVICE URGE	15 km	14	01/01/2012 11:13	2011	Medical	37 M	Coronariopathie	1	non	non	non	non	2	RETOUR DOMICILE	
2	01/01/2012 12:19	NON	MOYENS PERSONNEL CONSULTATIF	01 km	51	01/01/2012 02:13	2001	Chirurgie	182 M	Plaie ouverte	1	non	non	non	non	2	RETOUR DOMICILE	
3	01/01/2012 12:38	SAMU / CENTRE 15	AMBULANCE PRIVÉ SERVICE URGE	15 km	522	01/01/2012 11:13	2002	Medical	181 F	ECG/A infarctus	2	non	non	non	non	2	RETOUR DOMICILE	
4	01/01/2012 12:39	NON	MOYENS PERSONNEL SERVICE URGE	15 km	487	01/01/2012 11:37 N	2001	Chirurgie	187 M	Abscès du L	2	non	non	non	non	1	TRANSFERT INTER	
5	01/01/2012 12:51	SAMU / CENTRE 15	SAMU-SMUR	SERVICE URGE	2 km	149	01/01/2012 08:23 N	2002	Medical	4 M	Brûlure	1	non	non	non	non	5	HAMPSHIRE
6	01/01/2012 13:02	NON	MOYENS PERSONNEL CONSULTATIF	01 km	347	01/01/2012 11:40 N	2001	Medical	96 M	Cancer	2	non	non	non	non	2	RETOUR DOMICILE	
7	01/01/2012 13:09	NON	MOYENS PERSONNEL CONSULTATIF	15 km	77	01/01/2012 08:35 N	2001	Medical	16 F	Cancer	2	non	non	non	non	2	RETOUR DOMICILE	
8	01/01/2012 13:20	NON	MOYENS PERSONNEL CONSULTATIF	15 km	72	01/01/2012 08:35 N	2001	Medical	12 F	Cholangite	1	non	non	non	non	2	RETOUR DOMICILE	
9	01/01/2012 13:29	NON	MOYENS PERSONNEL CONSULTATIF	15 km	103	01/01/2012 12:32	2001	Medical	65 M	Duodenite	2	non	non	non	non	2	RETOUR DOMICILE	
10	01/01/2012 13:39	NON	AMBULANCE PRIVÉ SERVICE URGE	15 km	1440	02/01/2012 10:54	2002	Medical	12 F	Fract. vertèr	2	non	non	non	non	2	RETOUR DOMICILE	
11	01/01/2012 13:44	NON	MOYENS PERSONNEL CONSULTATIF	15 km	195	01/01/2012 14:13	2001	Medical	6 F	Coronariopathie	1	non	non	non	non	2	RETOUR DOMICILE	
12	01/01/2012 13:44	NON	MOYENS PERSONNEL CONSULTATIF	15 km	114	01/01/2012 13:31	2001	Medical	175 M	Quelque chose	1	non	non	non	non	2	RETOUR DOMICILE	
13	01/01/2012 13:44	NON	MOYENS PERSONNEL CONSULTATIF	15 km	46	01/01/2012 12:33	2001	Chirurgie	35 M	Plaie ouverte	2	non	non	non	non	2	RETOUR DOMICILE	
14	01/01/2012 13:52	NON	MOYENS PERSONNEL CONSULTATIF	15 km	151	01/01/2012 14:43	2001	Medical	18 M	ECG/A infarctus	2	non	non	non	non	2	RETOUR DOMICILE	
15	01/01/2012 13:58	NON	MOYENS PERSONNEL CONSULTATIF	15 km	73	01/01/2012 13:31	2001	Medical	7 M	Cancer	2	non	non	non	non	2	RETOUR DOMICILE	
16	01/01/2012 13:58	NON	MOYENS PERSONNEL CONSULTATIF	15 km	26	01/01/2012 12:50	2001	Chirurgie	181 M	Lésion de la	2	non	non	non	non	2	RETOUR DOMICILE	
17	01/01/2012 13:58	NON	MOYENS PERSONNEL CONSULTATIF	15 km	131	01/01/2012 14:27	2001	Medical	19 M	Rhabdomyolyse	2	non	non	non	non	2	RETOUR DOMICILE	
18	01/01/2012 13:58	NON	MOYENS PERSONNEL SERVICE URGE	15 km	351	01/01/2012 18:23	2002	Medical	28 M	Coronariopathie	2	non	non	non	non	5	HAMPSHIRE	
19	01/01/2012 13:58	NON	MOYENS PERSONNEL SERVICE URGE	15 km	1950	02/01/2012 12:32 N	2002	Medical	30 M	Quelque chose	2	non	non	non	non	2	RETOUR DOMICILE	
20	01/01/2012 13:58	NON	MOYENS PERSONNEL SERVICE URGE	15 km	254	01/01/2012 18:19 N	2002	Medical	91 F	Coronariopathie	2	non	non	non	non	5	HAMPSHIRE	
21	01/01/2012 13:58	NON	MOYENS PERSONNEL CONSULTATIF	15 km	112	01/01/2012 16:29 N	2001	Medical	108 F	Coronariopathie	2	non	non	non	non	2	RETOUR DOMICILE	
22	01/01/2012 13:58	NON	MOYENS PERSONNEL CONSULTATIF	15 km	142	01/01/2012 18:07 N	2001	Medical	38 F	Rach. et autres	2	non	non	non	non	2	RETOUR DOMICILE	
23	01/01/2012 13:58	NON	MOYENS PERSONNEL CONSULTATIF	15 km	147	01/01/2012 11:25 N	2001	Chirurgie	18 F	Exposition	2	non	non	non	non	2	RETOUR DOMICILE	
24	01/01/2012 13:58	NON	MOYENS PERSONNEL SERVICE URGE	15 km	174	01/01/2012 11:15 N	2001	Medical	25 M	Nucléaire	2	non	non	non	non	2	RETOUR DOMICILE	
25	01/01/2012 13:58	NON	MOYENS PERSONNEL SERVICE URGE	15 km	89	01/01/2012 17:25 N	2001	Medical	22 M	Lésion de la	2	non	non	non	non	2	RETOUR DOMICILE	
26	01/01/2012 13:58	NON	MOYENS PERSONNEL CONSULTATIF	15 km	136	01/01/2012 18:01 N	2001	Medical	6 F	ECG/A infarctus	2	non	non	non	non	2	RETOUR DOMICILE	
27	01/01/2012 13:58	NON	MOYENS PERSONNEL SERVICE URGE	15 km	111	01/01/2012 17:51 N	2001	Medical	6 F	Pharyngite	2	non	non	non	non	2	RETOUR DOMICILE	
28	01/01/2012 13:58	NON	MOYENS PERSONNEL SERVICE URGE	15 km	132	01/01/2012 08:35 N	2002	Medical	7 F	Autisme	2	non	non	non	non	2	RETOUR DOMICILE	
29	01/01/2012 13:58	NON	MOYENS PERSONNEL SERVICE URGE	15 km	142	01/01/2012 18:45 N	2001	Medical	6 F	Communicable	2	non	non	non	non	4	TRANSFERT INTER	
30	01/01/2012 13:58	NON	MOYENS PERSONNEL SERVICE URGE	15 km	146	01/01/2012 18:45 N	2001	Chirurgie	17 M	Coronariopathie	2	non	non	non	non	2	RETOUR DOMICILE	
31	01/01/2012 13:58	NON	MOYENS PERSONNEL CONSULTATIF	15 km	141	01/01/2012 18:25 N	2001	Medical	8 M	Rhabdomyolyse	2	non	non	non	non	2	RETOUR DOMICILE	
32	01/01/2012 13:58	NON	MOYENS PERSONNEL CONSULTATIF	15 km	74	01/01/2012 18:45 N	2001	Chirurgie	65 M	Coronariopathie	2	non	non	non	non	2	RETOUR DOMICILE	
33	01/01/2012 13:58	NON	MOYENS PERSONNEL SERVICE URGE	15 km	136	01/01/2012 21:11 N	2001	Medical	8 M	Brûlure	2	non	non	non	non	2	RETOUR DOMICILE	
34	01/01/2012 13:58	NON	MOYENS PERSONNEL SERVICE URGE	15 km	74	01/01/2012 18:35 N	2001	Medical	38 F	Pharyngite	2	non	non	non	non	2	RETOUR DOMICILE	
35	01/01/2012 13:58	NON	MOYENS PERSONNEL SERVICE URGE	15 km	335	01/01/2012 23:45 N	2002	Medical	3 M	Nucléaire	2	non	non	non	non	1	TRANSFERT INTER	
36	01/01/2012 13:58	NON	MOYENS PERSONNEL SERVICE URGE	15 km	145	01/01/2012 21:12 N	2001	Medical	3 F	Brûlure	2	non	non	non	non	2	RETOUR DOMICILE	
37	01/01/2012 13:58	NON	AMBULANCE PRIVÉ SERVICE URGE	15 km	400	02/01/2012 08:35 N	2002	Chirurgie	42 F	Fract. vertèr	2	non	non	non	non	6	TRANSFERT INTER	

We gathered all the data and list them according to categories. Each category should combine a number of days that follow, and have roughly the same admission profiles depending on the time of day. This is what we called a period. This latter should reflect the state of the activity in emergencies. The profiles of the same period is roughly similar, we were able to take a day to the image of the period, which we called a "Day Type".

For the data analysis, we implemented a simple algorithm based on a data classification technique. The aim is to divide a year on several periods accurately. We identified 12 periods.

Table 3. Identified period in 2011

Periods	Duration
P0	2011/01/01-2011/02/11
P1	2011/02/12-2011/02/19
P2	2011/02/20-2011/03/01
P3	2011/03/02-2011/03/11
P4	2011/03/12-2011/04/13
P5	2011/04/14-2011/04/18
P6	2011/04/19-2011/05/01
P7	2011/05/02-2011/06/20
P8	2011/06/21-2011/08/28
P9	2011/08/29-2011/09/25
P10	2011/09/26-2011/11/24
P11	2011/11/25-2011/12/31

4.3. Qualitative data collection

Some data were found to be uncompleted or duplicated several times and in different periods. These were excluded from analysis after a meeting with the focus

group. Following this, we adjusted the number and duration of periods found previously.

4.4. Data analysis

In this section, we focus on the minimum, maximum and average waiting times over the time for each care task and the utilization of different resources to perform them in the PED. Our goal is to determine from these curves the crowding indicators in order to identify the main causes of tensions which increase the waiting time of patients.

4.4.1. The number of patient by time slot according to the “day-type” profile

As explained above, we have to identify the day-type. So from collected data, we have identified three profiles: summer profile (Figure 10), winter profile (Figure 11) and crisis profile (Figure 12) knowing that we used the same simulation parameters (time slots) for all these profiles (Figure 9). The simulation results show the injected number of patients by time slot according to the focused profile.

Ajouter une période			
Début:	21/06/2013	08:00	Type de répartition: CONSTANT
Fin:	21/06/2013	10:00	Nombre d'instance(s): 8
Début:	21/06/2013	10:00	Type de répartition: CONSTANT
Fin:	21/06/2013	18:00	Nombre d'instance(s): 39
Début:	21/06/2013	18:00	Type de répartition: CONSTANT
Fin:	21/06/2013	22:00	Nombre d'instance(s): 32
Début:	21/06/2013	22:00	Type de répartition: CONSTANT
Fin:	22/06/2013	01:00	Nombre d'instance(s): 8

Figure 9. Simulation parameters

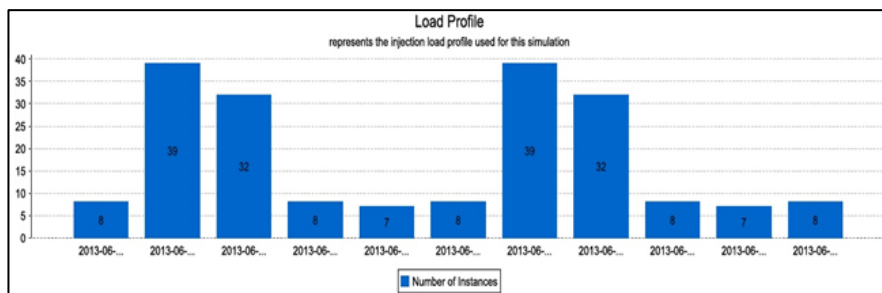


Figure 10. The summer profile simulation

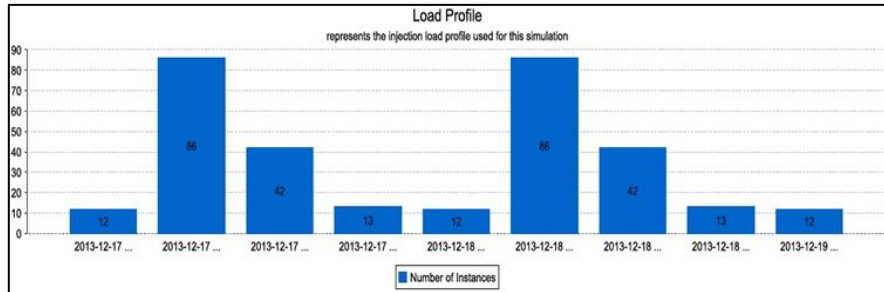


Figure 11. The winter profile simulation

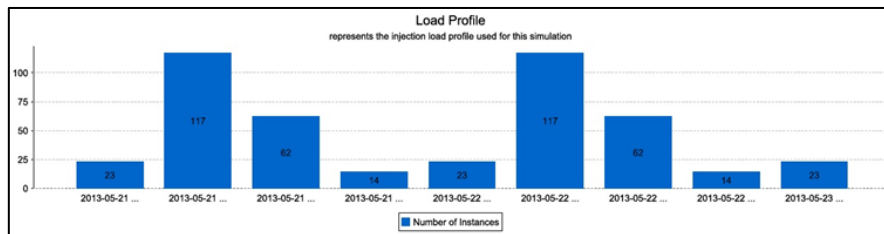


Figure 12. The crisis profile simulation

4.4.2. Waiting time and resources allocation according to the “day-type” profile

The Summer profile

The Figure 13 represents the average waiting time for the summer profile within a no crowded period. We note that the average waiting time in service is between 30min and 02h30, with a peak between 18h00 and midnight.

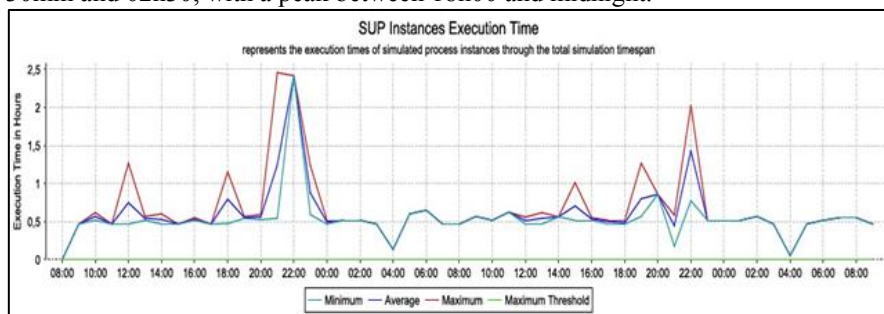


Figure 13. Average waiting time (summer profile)

The time required for the reception and orientation of the patient is about 10 minutes which is quite reasonable. It is the same for the patient registration. We

note also that the workload is of 40% for the staff. For example, the Care Assistant (CA) is a medical resource which is rarely used simultaneously (Figure 14).

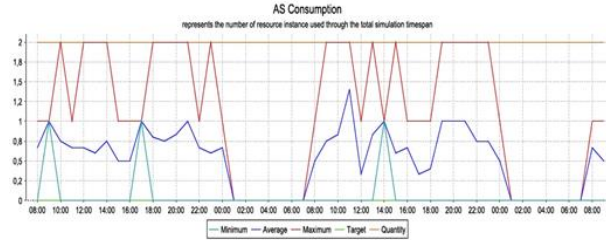


Figure 14. Number of resource use CA (summer profile)

However, the nurses are occupied up to 70% throughout the day and the BUs are used at 33%.

The winter profile

The winter profile further disrupts the service since the average waiting time is now between 1 and 4 hours with a peak at midnight (Figure 15).

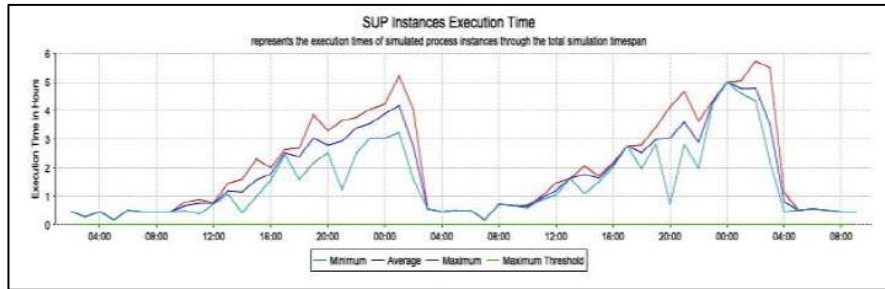


Figure 15. Average waiting time (winter profile)

The reception and orientation process of the patient reaches 1h between 20h and midnight. The using of the AS resource rises to 50% while the resource IDE is about 95% during the day (Figure 16). We note that only three of 10 boxes are used during the day when we should observe an increase.

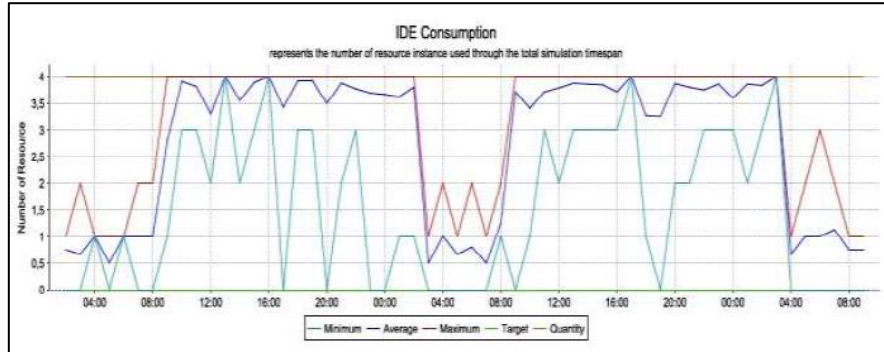


Figure 16. IDE resource consumption (winter profile)

The crisis profile

The crisis profile highlights the limits of the PED because the average waiting time diverges and is estimated to ten hours (Figure 17). The staff cannot handle both the patients present in the hospital and those arriving. So the reception and the orientation of patients is increasingly longer (Figure 19).

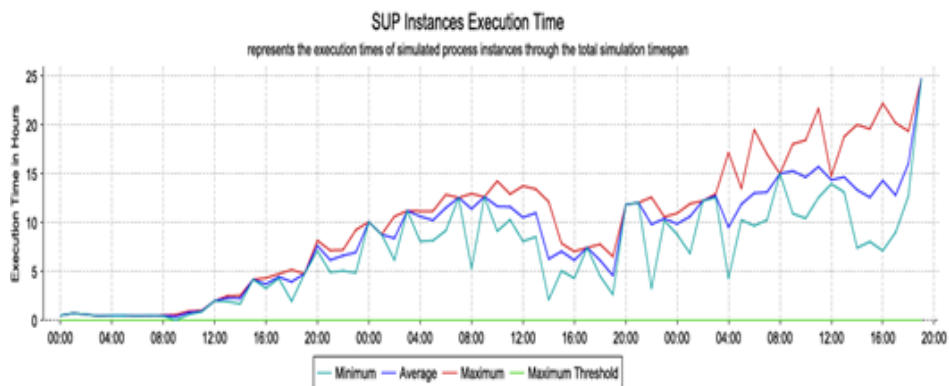


Figure 17. Average waiting time (crisis profile)

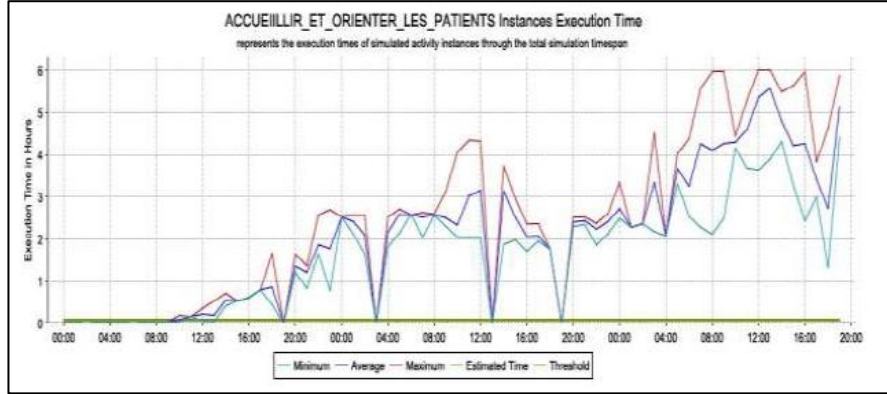


Figure 18. Average waiting time for the reception and orientation process

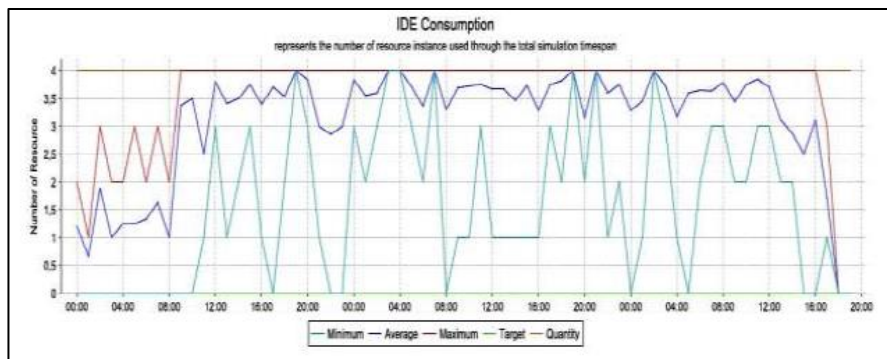


Figure 19. IDE resource consumption (crisis profile)

The waiting time in USTH can reach 4h the first day between 8h00 and 12h00 and 6h the second day. It is the same for external services such as the installation of plaster or stitches. The major problem concerns the four IDE working without interruption during the two days of testing (Figure 19).

5. Discussion

The CHRU of Lille had expressed a need for empirical data relating to the patient flow and journey through the PED as there was a lack of evidence to support proposals for improvements. Therefore, the main objective of this work is to gain a better understanding of delaying factors in the patient path and to provide an efficient base for service scheduling within the PED of the CHRU of Lille. There are examples in the literature that utilised models and identified factors contributing to patient delays in the PED patient journey [31] or stages of the journey[32] [33] .

However most studies focused on use of models to improve patient flow [35]; [35]; [36]; [37] rather than to document a detailed understanding for purposes of service planning.

The using of an adapted workflow approach to design and simulate the PED functioning makes this study more efficient. Consequently, most other studies were not directly comparable because different methods and sources were used to obtain the data and other types of models were constructed. For example, [38] have used a combination of simulated and actual data to create agent based and queuing models. However [30] used UML modeling approach to design the PED activities in Bendigo Health which is a public health provider in regional Australia. This work is interesting but the UML modeling approach is not the better way to design PED activities because this latter is adapted to software design and the simulation need an external module while the workflow approach is adapted to the process management and integrate the simulation mechanism.

There are three major stages: Stage 1, (Patient Arrival and Initial Assessment), Stage 2, (Patient (re)orientations and treatment), Stage 3 (Patient Destinations). The results associated with the four major stages in the patient journey (Figure 5) are discussed in turn.

Stage 1: Patient Arrival and Initial Assessment

The EVALAB partner and the RAs participants of our ANR project had identified a number of dysfunctions related to the patient arrival and initial assessment that unsatisfied them: physical layout of the PED entrance (triage area), overloading at triage, duplication of documentation, the need for extra staff and computers for data entry as well as more efficient and effective methods for fast-tracking patients, the box allocation and retrieving patient records. There are two physical layouts of the PED entrance. These latter correspond to two distinct triage area. The first one concerns the area of the patient reception and registration and the second one corresponds to the area of the patient orientation.

The quantitative data demonstrated that (Table 1 Table 1. Anonymous data collection in 2011 and Table 2), despite the identified problems during the workshops, patient entry and initial assessment was very efficient over the period of the mapping exercise. The RAs commented on the high standard and professionalism of the clinical personnel carrying out the triage process, the clerical personnel carrying out the data entry and collection of patient medical records, and the communication between the ambulance staff and the PED staff.

The problems recognized in the workshop, whereas not being clearly evident in the quantitative data, clearly become important in high volume situations when the impact of resource limitations was greatly highlighted.

The mean waiting-room times were 10 min (80th percentile (18 min) for admitted patients and 45 min (80th percentile 73 min) for discharged patients. The distribution of waitingtimes for discharged patients was strongly distorted and there were periods of bottleneck, despite the mean waiting times being quite acceptable according to triage guidelines. The relatively high proportion of patients who did not

wait (NWP) is about (10.5%) of presentations may result from bottleneck. This was also observed by RAs who recorded notes such as “PED busy” on some of the NWP forms. Further, an additional 35.5% of presentations at the triage station, comprising PED enquiries (20.6%) and non-PED enquiries (8.9%), were not recorded in the PED patient information system. This unmeasured workload also potentially contributes to the congestion experienced at triage.

Stage 2: (re)orientation and treatment

In the workshop activity, the participants perceived turnaround times for in-box investigations and clinical consultancies as a source of delay in patient flow. Hence the expected result from the mapping exercise was that the recorded turnaround times might represent a substantial proportion of the total length of stay and might provide an opportunity for improvement. A study of an ED with annual presentations of 55,000 by [33] had demonstrated with a simulation model run over three months that reducing turnaround times improved ED throughput.

However delays due to long waits for the results of tests and consultation by external specialists that were identified in the workshop as inhibiting patient flow were not evident to represent in our workflow model. Indeed, the RAs’ observation was that the turnaround time for investigations was excellent, but that there were delays due to the lack of a mechanism for alerting PED medical staff when results were available. In some cases staff may not have been available, or able to act on the results more quickly. The use of advanced information management systems such as the computerized whiteboard system described by [39] may be beneficial. In this context, this lack will be resolved thanks to our graphical workflow forms allowing the just-in-time information.

Stage 3: Patient Destinations

The destination of particular interest was the admission of a patient to a hospital ward. This was because the main problem identified by the workshop participants in regard to patient destination was bed availability (tension indicator). During this waiting period the PED limited equipment resources (e.g. boxes, vital rooms, etc.), are occupied by the waiting patient and not available for treating new patients. The situation represents potential bottleneck in the final stage of the patient journey (tension indicator).

The combined mean time from a bed request to exit of approximately 4h, if applied to the mean admission rate of 30 admissions per day requiring a bed in a hospital ward, corresponds to 120h of “lost” box capacity. These amounts to (almost) 5 of the 14 boxes effectively unavailable for use 24h per day. There is clearly the opportunity to improve patient flow by addressing the resource limitations that contribute to the delays in admission.

The workshop participants also identified shortcomings in the PED exit processes. This was consistent with the observations of RAs concerning dropouts and the duplication in the decision-to-admit processes and apparent lack of well-defined exit processes for both admitted and discharged patients.

6. Limitations

The workflow mapping model was limited to the PED itself. Therefore, the outcomes are valuable, primarily, for internal PED management.

Nevertheless, the mapping process does shed light on the impact of external factors such as inpatient bed availability (first tension indicator) and on the impact of internal factors such as the sudden increasing of patient flow (second tension indicator). This latter indicator generates a peak of activity of medical staff then a bottleneck (third tension indicator).

The data were collected during two years (2011-2012) within a specific PED and is limited in its general application to other time periods and departments. There were some patients for whom admission was sought, but inpatient beds were unavailable. The patients were eventually discharged after stays in excess of ten hours, having been treated in the PED. The statistical impact was to increase mean time in the PED for discharged patients. On the other hand the mean time interval from bed request to bed availability was artificially reduced due to the removal of the data for these patients from the admitted patients list.

Another limitation is the connection of the workflow model with the database which is not already established to automate the simulations. In fact, for the moment, we inject manually data in the simulation module in order to generate graphs. This is planned for a following project.

7. Conclusions

The use of workflow approach to design the patient journey through the PED of CHRU of Lille was effective in facilitating the application of a combination of qualitative and quantitative data to depict and analyze the entire PED activity spectrum. The workflow diagrams modeled the complete patient journey, whilst the simulation module enabled the strengths and weaknesses of the PED processes to be identified and the impact of bottlenecks within the patient journey to be measured. These models have the added advantage of being easily validated by the user in the system because the graphical elements are easily understood. In addition, there is the possibility to connect them directly to the real PED database in order to automate the simulation and then to analyze in real time the tension indicator through an effective scoreboard.

Recording primary data through EVALAB graphical interfaces, independently of the hospital data acquisition processes, ensured data integrity for the ANR HOST project, and also provided important data that is not routinely recorded. In particular, time data such as the decision to admit time, time of notification of bed availability, and the time at which investigations are requested and then results are subsequently accessed were key data for the study.

Along with shorter studies conducted internally by CHR of Lille, the body of evidence arising from this project has contributed to plans for re-designing and resourcing of the PED and to inform the development of an intelligent business system aimed at the timely identification of impending access block so that action can be taken to alleviate serious PED over-crowding. It is a strong example of a uni-

versity/hospital collaboration contributing to evidence-based health service planning.

Acknowledgement

This work was supported and funded by ANR HOST (ANR-11-TecSan-010).
http://www.agence-nationale-recherche.fr/projet-anr/?tx_lwmsuivibilan_pi2%5BCODE%5D=ANR-11-TECS-0010

References

- [1] WMP.Vander Aalst, BF.Van Dongen, J.Herbst, Workflow mining: A survey of issues and approaches, *Data & Knowledge Engineering* 2003.47: p. 237-267
- [2] Michel Chinosi and Alberto Trombetta., BPMN: An introduction to the standard Varese (VA), *Computer Standards & Interfaces*, 2012. 34(1): p.124-134
- [3] J-F.Navas, C.Artéta, P.S.Hadjes, F.Jiménez (2003) « Construction et simulation d'un modèle de fluxde patients dans le service d'urgences d'un hôpital colombien », *Formato de Atencion Inicial de Urgencias*, en « *Procesos Operativos de Urgencias* », Documentos confidenciales Servicio de Urgencias Fundacion CardiInfantil, Agosto
- [4] Y.Ducq, B.Vallespir, G.Doumeingts, "Utilisation de la méthodologie GRAI pour la modélisation, le diagnostic et la conception d'un système hospitalier ", GISEH.
- [5] M .D.Rossetti, G.F.Trzcinski, S.A.Syverud,. Emergency department simulation and de-termination of optimal attending physician staffing schedules, In *Proceeding of the Simulation Conference*, Winter 1999, vol.2 : p.21532 – 1540, P.A. Farrington , H.B.nembhard, D.T.Sturrock,and G.W.Evands,eds.
- [6] B.E. Ruby, S.W. Darrell, A.S. Wendy and H.C. Mary,. The use of simulation to evaluate hospital operations between the emergency department and a medical telemetry unit, *WSC '03 Proceedings of the 35th conference on winter simulation: driving innovation*, 2003, p.1887-1893.
- [7] Samaha Simon, Armel S. Wendy and Starks W. Darrell,. The use of simulation to reduce the length of stay in an emergency department, In *Proceedings of the Winter Simulation Conference*, 2003: p. 1907-1911
- [8] Mahapatra S., Koelling C. P., Patvivatsiri L., Fraticelli B.Eitel D., and L. Grove, Emergency departments II: Pairing emergency severity index5-level triage data with computer aided system design to improve emergency department access and throughput, In the *WSC '03 Proceedings of the 35th conference on Winter simulation: driving innovation*, 2003: p. 1917-1925

- [9] Takakuwa Soemon and Shiozaki Hiroko., Functional analysis for operating emergency department of a general hospital, In Proceedings of the Winter Simulation Conference, 2004: vol.2, p. 2003-2011.
- [10] Baesler F. Felipe, Jahnsen E. Hector and Da Costa Mahal., Emergency Department I: The use of simulation and design of experiments for estimating maximum capacity in an emergency room, In WSC '03 Proceedings of the 35th conference on winter simulation: driving innovation, 2003: p. 1903-1906.
- [11] Wiinamaki Allan and Dronzek Rainer (2003) "Using simulation in the architectural concept phase of an emergency department design", In Proceedings of the 2003 Winter Simulation Conference, S. Chick, P. J. Sanchez, D. Ferrin, and D. J. Morrice (eds): 1912-1916.
- [12] M .D. Rossetti, G.F.Trzcinski, S.A. Syverud., Emergency department simulation and de-termination of optimal attending physician staffing schedules, In Simulation Conference Proceedings, Winter, 1999, vol. (2): p. 1532 – 1540.
- [13] N-B. Souf, J-M. Renard, Régis., Dynamic workflow model for complex activity in intensive care unit, International Journal of Medical Informatics, 1999, 53(2/3): p. 143-150.
- [14] A.Komashie and A.Mousavi., Modeling emergency departments using Discrete Event Simulation techniques, In WSC '05 Proceedings of the 37th conference on winter simulation, 2005: p. 2681-2685.
- [15] A. Fraisse, S. Le Bel, B.Mas, D. Macrae., Pediatric cardiac intensive care unit: Current setting and organization, Archives of Cardiovascular Diseases, 2010, 103(10): p. 546-55.
- [16] Gausche-Hill M, Schmitz C, Lewis RJ., Pediatric preparedness of US emergency departments: a 2003 survey, Pediatrics, 2007, 120(6): p.1229-37.
- [17] Tracy MA. Improving pediatric quality care in general care emergency departments, Journal of Emergency Nursing, 2007, 33(4):p.399-401.
- [18] Sinclair, D., Emergency department overcrowding -implications for paediatric emergency medicine, Paediatrics & Child Health, 2007, 12 (6): p. 491-494.
- [19] Trunkey, D.D., Emerging crisis in trauma care: a history and definition of the problem, Clinical Neurosurgery, 2007, 54:p. 200-205.
- [20] Forero, R., Hillman, K., 2008. Access Block and Overcrowding: a Literature Review, Report commissioned by the Australasian College for Emergency Medi-

cine. The Simpson Centre for Health Services, University of New South Wales, p. 1-26.

[21] King, D.L., Ben-Tovim, D.I., Bassham, J., Redesigning emergency department patient flows: application of lean thinking to health care, *Emergency Medicine Australasia*, 2006, 18 (4): p. 391-397.

[22] Brailsford, S.C., Lattimer, V.A., Tarnaras, P., Turnbull, J.C., Emergency and on-demand health care: modelling a large complex system, *Journal of the Operational Research Society*, 2004, 55: p.34-42.

[23] Andersson, A., Hallberg, N., Eriksson, H., Timpka, H., A Management Information System Model for Process-Oriented Health Care, In: Fieschi, M., Coiera, E., Yu-Chan, J.L., (eds.), *Medinfo 2004: Proceedings of the 11th World Congress on Medical Informatics*, IOS Press, p.1008-1012.

[24] Ottensooser et al., Making sense of business process descriptions: An experimental comparison of graphical and textual notations, *Journal of Systems and Software*, 2012, 85 (3): p. 596-606.

[25] A.Reix., “Etude de l’organisation des différents systèmes d’urgence dans six pays euro-péens : La France, le Royaume Uni, la Belgique, la Suède, la Finlande et la Norvège” (2002) Memory of thesis for the diplôme of doctor state in medicine.

[26] M.Chodosas., “Etude de l’organisation des différents systèmes d’urgence dans cinq pays européens (2002) La France, l’Allemagne, l’Espagne, l’Italie et le Portugal ”, Mémoire de thèse pour le doctorat en médecine: 20

[27] Wohed et al Pattern-based analysis of BPMN - an extensive evaluation of the control- ow, the data and the resource perspectives (2005) in *Proceedings 4th International Conference on Business Process Management (BPM 2005)*, LNCS , 2005): p. 1-5.

[28] J.P. Nolan European Resuscitation Council Guidelines for Resuscitation 2010 journal homepage Resuscitation, 81, (2010) 1219–1276

[29] Système d’information Hospitaliers ; Assises Nationales de l’hospitalisation psychiatrique privée - Congrès des 23 et 24 octobre 1998 à Toulouse <http://www-ulpmed.u>

[30] Martin et al, Mapping patient flow in a regional Australian emergency department: A model driven approach *International Emergency Nursing* (2011) 19, 75– 85 Received 2 February 2010; received in revised form 23 March 2010; accepted 25 March 2010

[31] Miro, O., Sanchez, M., Espinosa, G., Coll-Vinent, B., Bragulat, E.,Milla, J., 2003. Analysis of patient flow in the emergencydepartment and the effect of an extensive reorganisation.*Emergency Medicine Journal* 20 (2), 143–148, Discussion 148.

[32] Lyons, M., Brown, R., Wears, R., 2007. Factors that affect the flow of patients through triage. *Emergency Medicine Journal* 24, 78–85.

[33] Storrow, A.B., Zhou, C., Gaddis, G., Han, J.H., Miller, K., Klubert,D., Laidig, A., Aronsky, D., 2008. Decreasing lab turnaround timeimproves emergen-

- cy department throughput and decreases emergency medical services diversion: simulation model. *Academic Emergency Medicine* 15 (11), 1130–1135.
- [34] Saunders, C., Dempsey, C., 2008. Improving patient. Flow physician involvement drives success at Georgia hospital. *Healthcare Executive* 23 (6), 46, 48.
- [35] Jensen, K., Crane, J., 2008. Improving patient flow in the emergency department. *Healthcare Financial Management* 62 (11), 104–106, 108.
- [36] Medeiros, D.J., Swenson, E., DeFlitch, C., 2008. Improving Patient Flow in a Hospital Emergency Department. In: *Proceedings of the 40th Conference on Winter Simulation*. Winter Simulation Conference, Miami, Florida, pp. 1526–1531.
- [37] Welch, S.J., Jones, S.S., Allen, T., 2007. Mapping the 24-hour emergency department cycle to improve patient flow. *Joint Commission Journal on Quality and Patient Safety* 33 (5), 247–255.
- [38] Laskowski, M., McLeod, R.D., Friesen, M.R., Podaima, B.W., Alfa, A.S., 2009. Models of emergency departments for reducing patient waiting time. *PLoS ONE* 4 (7), e6127.
- [39] Aronsky, D., Jones, I., Lanaghan, K., Slovis, C.M., 2008. Supporting patient care in the emergency department with a computerized whiteboard system. *Journal of the American Medical Informatics Association* 15 (2), 184–194.
- [40] J. Mendling, *Declarative vs. Imperative Process Modeling Languages: The Issue of Maintainability* *Proceedings of the 1st International Workshop on Empirical Research in Business Process Management (ER-BPM'09)*, Ulm, Germany, September 2009. LNBIP 43, pp. 477–488, Springer-Verlag.