



**HAL**  
open science

## Comparative study of Named-Entity Recognition methods in the agronomical domain

Huy Do, Hanh Tran, Quang Khoat Than, Pierre Larmande

► **To cite this version:**

Huy Do, Hanh Tran, Quang Khoat Than, Pierre Larmande. Comparative study of Named-Entity Recognition methods in the agronomical domain. CiCling, Mar 2018, Hanoi, Vietnam. hal-01711331

**HAL Id: hal-01711331**

**<https://hal.science/hal-01711331>**

Submitted on 17 Feb 2018

**HAL** is a multi-disciplinary open access archive for the deposit and dissemination of scientific research documents, whether they are published or not. The documents may come from teaching and research institutions in France or abroad, or from public or private research centers.

L'archive ouverte pluridisciplinaire **HAL**, est destinée au dépôt et à la diffusion de documents scientifiques de niveau recherche, publiés ou non, émanant des établissements d'enseignement et de recherche français ou étrangers, des laboratoires publics ou privés.

# Comparative study of Named-Entity Recognition methods in the agronomical domain

Huy Do<sup>1</sup>, Hanh Tran<sup>1</sup> Quang Khoat Than<sup>3</sup>, and Pierre Larmande<sup>1,2</sup>

<sup>1</sup> University of Science and Technology of Hanoi (USTH), ICT Lab

<sup>2</sup> Institute of Research for Development (IRD), LMI RICE

`pierre.larmande@ird.fr`

<sup>3</sup> Hanoi University of Science and Technology (HUST)

Hanoi, Vietnam

`khoattq@soict.hust.edu.vn`

**Abstract.** Text mining is becoming an important part of research topic in biology with the original purpose to extract biological entities such as genes, proteins and traits to extend the knowledge from scientific papers. However, few thorough studies on text mining and applications are developed for plant molecular biology data, especially rice, thus resulting a lack of datasets available to train models. Since there is no/rare benchmark for rice, we have to face various difficulties in exploiting advanced machine learning methods for accurate analysis of rice bibliography. In this article, we developed a new training datasets (Oryzabase) as the benchmark. Then, we evaluated the performance of several current approaches to find a methodology with the best results and assigned it as the state of the art method for our own technique in the future. We applied Name Entities Recognition (NER) tagger, which is built from a Long Short Term Memory model, and combined with Conditional Random Fields (LSTM-CRF) to extract information of plant genes and proteins. We analyzed the performance of LSTM-CRF when applying to the Oryzabase dataset and improved the results up to 89% in  $F_1$ . We found that on average, the result from LSTM-CRF is more exploitable with the new benchmark.

**Keywords:** Text mining, LSTM-CRF, NER, Bioinformatics, Plant Genomics

# 1 Introduction

## 1.1 Problem Statement

The last few decades have witnessed the massive explosion of information in life science. However, an important proportion of information relevant to this field is not available from databases but is instead present in unstructured scientific documents, such as journal articles, reviews and reports. Agronomy is an overarching field, that comprises of diverse domains such as Genetics, Plant Molecular Biology, Ecology and Soil Science. Despite the advancement in information technologies, scientific communication in agronomy is still largely based on text because it is the common way to report scientific advancements. To effectively develop applications to improve crop production through sustainable methods, it is important to overlay research findings from these fields as they are highly inter-connected. However, the collection of content is growing continuously and the information are currently available as unstructured text. Using these resources more efficiently and taking advantage of associated cross-disciplinary research opportunities poses a major challenge to both domain scientists and information technologists.

An important task is to identify biological entities and their classification, which is also called the recognition of name entities (NER). Several text mining methods and tools have been developed to solve this problem, divided into four main approaches [1]. The most basic and traditional methodology is rule-based approach. The technique identifies entities by a group of written rules, which are manually done by the domain scientists with linguistic knowledge. As a result, it is time-consuming and easily error-prone. The second approach is dictionary-based methods. The model matches the candidate entities with a dictionary that contains all the known entities to detect whether the candidate belongs to a defined category or not. However, if there exists new entities, for instances, from new discovery and not in the available dictionary, the system is not able to recognize them, which reduces the efficiency of the model. The third approach is based on machine learning, which uses a statistical classifier to extract the features (prefixes, suffixes, number of capital letters, etc.) that are able to recognize the entities. Several familiar algorithms have been proposed such as Naive Bayes, Conditional Random Fields (CRF) [2], and so on. However, this method need an important corpus annotated manually to train and test efficiently. Last but not least, hybrid approach is proposed as the combination of two or more of the previous techniques to take advantage of the strength and reduce the weak points among them.

Identifying Biological Entities is not trivial. Despite the fact that there exists many available approaches to handle this problem in general and in the Biomedical domain, few thorough studies have been implemented for plants, especially rice. Moreover, we found rare benchmarks available for plant species and none for rice. Thus, we faced various difficulties to exploit advanced machine learning

methods for accurate analysis of rice.

## 1.2 Objective

In the large scale, we are currently building an RDF knowledge base, Agronomic Linked Data (AgroLD – [www.agrold.org](http://www.agrold.org)). The knowledge base is designed to integrate data from various publicly plant centric databases such as Gramene [3], Oryzabase, TAIR[4] to name a few. The aim of AgroLD project is to provide an integrated portal for bioinformatics and domain experts to exploit the homogenized data model towards filling the knowledge gaps. In this landscape, we aim to extract relevant information from the literature in order to enrich the content of integrated datasets.

Due to the scope of the article, we exploit information from Oryzabase database as our benchmark and focus on researching and evaluating the performance of the current approaches and assigning the method with the best accuracy and efficiency as the state-of-the-art for our own technique in the future. After researching and analyzing, Long Short Term Memory - Conditional Random Fields (LSTM - CRF) has been chosen for further analysis due to their competency and efficiency compared to others.

## 2 Materials and methods

### 2.1 LSTM-CRF model

Long Short Term Memory - Conditional Random Field (or LSTM-CRF) is a generic method based on deep learning and statistical word embeddings. To deeply understand the whole architecture, it is necessary to understand the concept of LSTM and CRF first.

**LSTM** Long Short Term Memory (or LSTM) [5,6] is a type of recurrent neural network (RNN) focusing on learning order dependence in sequence prediction problems. When RNNs are applied for learning long dependencies in practice, they tend to fail the tasks with the bias towards the most recent inputs of the sequence. Long Short-term Memory Networks (LSTMs) is the answer for this issue. It proves to capture long-range dependencies by incorporating a memory-cell and using several gates that control the proportion of the input to give to the memory cell, and the proportion from the previous state to forget [6]. Taking a sequence of vectors  $(x_1, x_2, \dots, x_t)$  as an input, LSTM returns the output in the form of another sequence  $(h_1, h_2, \dots, h_t)$  of equal length to represent the information of the input. The implementation of LSTM is based on the equation below:

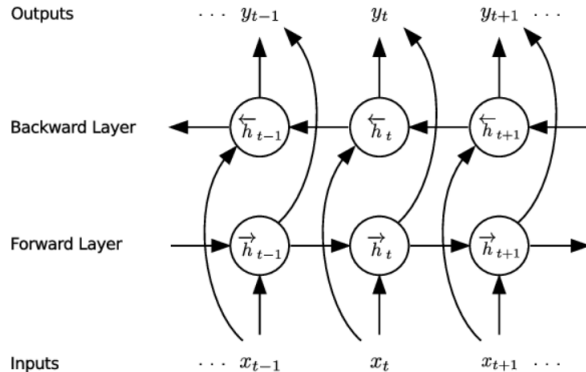
$$i_t = \sigma(W_{xi}x_t + W_{hi}h_{t-1} + W_{ci}c_{t-1} + b_i) \quad (1)$$

$$c_t = (1 - i_t) \times (c_{t-1} + i_t) \times (\tanh(W_{xc}x_t + W_{hc}h_{t-1} + b_c)) \quad (2)$$

$$o_t = \sigma(W_{xo}x_t + W_{ho}h_{t-1} + W_{co}c_t + b_o) \quad (3)$$

$$h_t = o_t \times \tanh(c_t) \quad (4)$$

where  $\sigma$  is the element-wise sigmoid function, and  $\times$  is the element-wise product.



**Fig. 1.** LSTM model [7]

The workflow follows the combination of LSTM pair (forward and backward LSTM) called a bidirectional LSTM [8]. After receiving the input  $(x_1, x_2, \dots, x_t)$  with each element represented as a d-dimensional vector, the first LSTM (or forward LSTM) computes the representation  $\vec{h}_t$  of the left context of the sentence at every word  $t$  and the second one (or backward LSTM) reads the same input sequence in reverse to obtain the representation  $\overleftarrow{h}_t$  of the right context using different parameters. Then, the model concatenate its left and right context representations,  $h_t = [\vec{h}_t \overleftarrow{h}_t]$  to achieve the representation of a word, which is useful for various tagging applications.

**CRF** Conditional random fields (CRFs) is a tagging model for labeling and segmenting structured data, such as sequences, trees and lattices. The general idea of this model [9] is to make independent tagging decisions for each output  $y_t$  using the features  $h_t$ . However, for NER tagger, using traditional CRF with independent classification decisions is insufficient and impossible with numerous constraint because of the strong dependencies cross the output labels.

In this article, we focus on the jointly CRF model proposed by Lafferty et al.[2]. For an input  $X = (x_1, x_2, \dots, x_t)$ , the matrix of scores output  $P$  is obtained from the bidirectional LSTM network with  $n \times k$  in size, where  $k$  is the number of tags

and  $P_{i,j}$  regarding the score of  $j^{th}$  tag of  $i^{th}$  word in a sentence [10]. Meanwhile, for the sequence of predictions  $Y = (y_1, y_2, \dots, y_t)$ , the score is:

$$s(X, y) = \sum_{i=0}^n A_{y_i, y_{i+1}} + \sum_{i=0}^n P_{i, y_i} \quad (5)$$

where A represents a  $[k + 2]$  matrix of transition scores from the tag  $y_i$  to tag  $y_j$ .

The probability for the sequence  $y$  then is defined by a softmax over all possible tag sequences as:

$$p(y|X) = \frac{e^{s(X, y)}}{\sum_{\tilde{y} \in Y_x} e^{s(X, \tilde{y})}} \quad (6)$$

To encourage the network to produce a valid sequence of output labels, the log-probability of the correct tag sequence is maximized in training process as:

$$\log(p(y|X)) = s(X, y) - \log\left(\sum_{\tilde{y} \in Y_x} e^{s(X, \tilde{y})}\right) \quad (7)$$

where  $Y_x$  indicates all possible tag sequences for a sentence X.

After that, we predict the output sequence in decoding step following the equation:

$$y^* = \arg \max_{\tilde{y} \in Y_x} s(X, \tilde{y}) \quad (8)$$

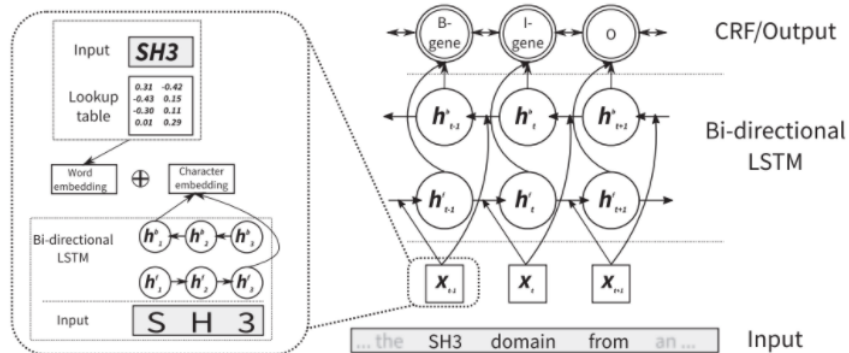
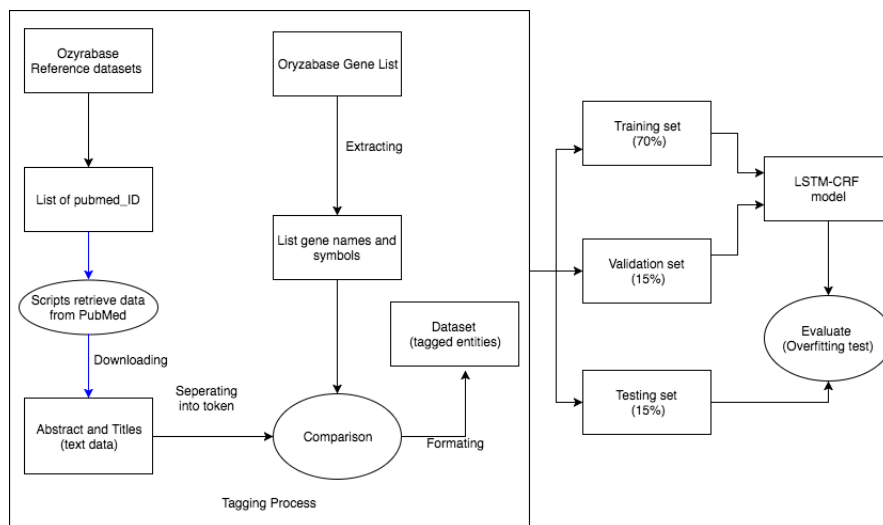


Fig. 2. LSTM-CRF model[5]

**LSTM-CRF** The architecture of LSTM-CRF is illustrated in Fig.1 [5]. The whole system includes three main layers: the embedding layer as input, bi-directional LSTM layer, and CRF layer as output. Given the raw sentence made

of the sequence of words  $w_1; w_2; \dots; w_n$  as the input, the embedding layer produces an embedding vector  $x_1; x_2; \dots; x_n$  for each word. Every embedding vector regarding distinct word is a concatenation of two components: word- and a character-level embedding. We retrieve the word-level embedding from a lookup table of word embeddings, meanwhile, we apply a bi-directional LSTM to the character sequence of each word and then concatenate both directions to achieve the character-level embedding. That means the resulting sequence of embeddings  $x_1; x_2; \dots; x_n$  is fed into bi-directional LSTM-layer to produce a refined representation of the input and we take as the input to a final CRF layer. The final output from this layer is obtained by applying the classical Viterbi algorithm. We trained the whole network by back-propagation.

## 2.2 Dataset



**Fig. 3.** Schema of the training process

In this project, we use datasets from Oryzabase<sup>4</sup>, an integrated rice science database. Concentrating on the entities of rice genes, we downloaded the Gene List and Reference datasets, then took them as the training data and ground-truth, respectively for diverse approaches to extract gene entities. The Oryzabase Gene List contains 21739 different genes with detailed Trait Gene Id, GSNL Gene Symbol, Gene symbol synonym(s), CGSNL Gene Name, Gene name synonym(s), Protein Name, Allele Chromosome No. Explanation, Trait Class, RAP

<sup>4</sup> <https://shigen.nig.ac.jp/rice/oryzabase/>

ID, Gramene ID, Arm Locate(cM), Gene Ontology, Trait Ontology, Plant Ontology. Meanwhile, Oryzabase Reference includes about 44837 references from distinct scientific articles which are ranged in the form of ReferenceID, PubMedId, Author, Title, Journal Volume, Pages, Year, CGSNL Gene Symbol, Gene Name Synonym.

Dataset	Text genre	Text type	Entity Type
Oryzabase	Scientific article	Abstract and title	Genes

Number of articles	Number of sentences	Number of words
10400	75096	2697726

**Table 1.** The details of main dataset

### 2.3 Text pre-processing

The original format of all data were formed into separated tabs, which include the pubmed ID, the title, released year, journal and abstract part. Due to the size of all data, we separated them into several files to avoid the problems of Internet connection during the downloading process as well as make the error trace becoming more easily.

The first step was to convert the abstract and title into a uniform format. In this case, words are given in the following lines, one word per line, and included 3 tabs: the first one being the word itself, the part-of-speech tags (POS tag) and the last one being the entity type. Each word was on a separate line, and there was an empty line after each sentence. An empty line indicates the end of a document, and the next document starts after this empty line.

From the beginning, the formatting data was processed manually by our scripts without support of any tools, and all scripts were written in Python.

Firstly, we split the abstracts and titles into sentences, and from sentences into words. Then, we compared the word with the Oryzabase list genes and apply the Inside-Outside-Beginning (IOB) format to determine a word is an entity or not. To make the tag become more meaningful to apply CRF on model, we also apply POS tagging on words by using a specific library of Python for natural language processing.



## 2.4 Training process

Before going deeper to training process, we need to define some properties. First, the LSTM(-CRF) will work at words levels which include an entity tag to determine itself and the input data going through model is sentence level.

The Named Entity Recognition tagger method (NER tagger), which is a LSTM (with CRF) model, was built and the original source code are available at <https://github.com/glample/tagger>). However, we had re-configured this model a bit to fit with our dataset instead of using immediately.

On the training process, at the beginning, we have done several experiments to find the best parameters for the model. In our models, we used a learning rate equal to 0.001 instead of the default value 0.005. We saw that the default one was too high and it made the model not converge. Besides, we have trained LSTM model with and without the CRF to evaluate the effect of this part to the general result of dataset.

## 2.5 Evaluation parameters

We saw that Oryzabase dataset is quite big, thus we decided to separate dataset into 3 subsets with different ratio: 70% for training set, 15% for testing set, and the last 15% of dataset for validation which can help the model avoid over-fitting issue. (Fig.3).

To evaluate a deep learning model, we also used the precision, recall and  $F_1$  - *score* on the test set. By evaluating the set of true positive, false positive and false negative, we computed the value of  $F_1$  - *score*.

Besides, we used some small tests to ensure that the model would not be over-fitting as well as check the efficiency of models.

# 3 Results and discussion

## 3.1 Result

We assessed the performance of NER tagger method by evaluating the LSTM-CRF, on the Oryzabase dataset covering several different types of rice genes. LSTM-CRF uses as features only low-dimensional representations of the words in the vicinity of the to-be-classified tokens, created by mixing word-level embeddings created in an unsupervised fashion with character-level embeddings trained on the respective corpus. Results were compared with a traditional CRF using typical NER features and the same word embeddings, and to type-specific baselines representing the state-of-the-art in biomedical NER.

Now, we will evaluate the performance of pre-trained LSTM, LSTM-CRF models on Oryzabase dataset. Results in terms of precision, recall,  $F_1$  - *score* for

each model are shown in table 2. LSTM-CRF achieves the best performance between several models. On average,  $F_1$ -score is 86.72% for the generic LSTM-CRF method, 80.44% for the generic LSTM method.

Then, to re-check the accuracy and efficiency of the model as well as to be sure that model not over-fit, we have done some tests manually with a small set of data, we saw that the result of trained model are very exploitable.

	Precision(%)		Recall(%)		$F_1 - score$ (%)	
	(i)	(ii)	(i)	(ii)	(i)	(ii)
LSTM	80.16	78.06	79.16	82.97	79.66	80.44
LSTM-CRF	87.24	87.32	84.73	86.13	85.97	86.72

**Table 2.** the best result of performance values in terms of precision, recall and  $F_1 - score$  for pure LSTM and LSTM-CRF method with different training parameters: (i)learning rate=0.001, dropout =0.3 ,(ii) learning rate=0.001, dropout =0.5

### 3.2 Discussion

During the process to complete the method, we have dealt with several issues which came from the data format process as well as the configuration of model. First, to discuss about the dataset, the training data is created from abstracts and titles of over 10.000 scientific articles of Oryzabase references. We cannot use all raw texts of an article because it will increase the size of dataset too largely. With the aim to find the appearance of gene names or symbols in text data, we expect that the these kinds of information could be appeared in the first part of articles. However, the huge number of data (2.7 millions words) with different kinds of writing styles takes a lot of time for the downloading process.

After that, we saw that there exists the imbalance of each entity types in the dataset. We need the text information of gene names/symbols but in fact, the ratio between genes and normal words are really huge. After some first training times, we got the models which reach over 65.5% in accuracy but it did not satisfy our expectation. The imbalance of data can lead to worse result during the training process, and the traditional oversampling methods seem not available for text data, which are really meaningful in the connection of words and sentences.

To handle this problem, we based on the configuration of NER models that have input at sentence level and process input at word level. Therefore, we can collect the all sentences which contain the entity tags without effect the meaning of

text data. This solution seems to be effective to improve the performance of the model when it reaches over 86% in accuracy of  $F_1 - score$ .

In the result section, we have shown the result of the performance for a specific parameter which is the value of dropout functions. For both LSTM and LSTM-CRF, at the beginning, we used the default value equal to 0.005 but these models could not converge. After that, the value of learning rate equal to 0.001 has been chosen through several experiments and evaluation. For the value of dropout, we tried with different values of dropout because we want to see the performance of model as well as the effect of parameters to the training process. The default value of dropout equal to 0.5 was firstly chosen for the training process. However, according to Lample et al.(2016) [10], the value of dropout equal to 0.3 was optimal for most dataset evaluated. Therefore, we want to try for both values and the result is not really effective.

In recent years, pattern- and dictionary- based methods have been replaced by new approach based on machine learning in general and deep learning more specifically. Nowadays, several methods relying on deep learning and the combination with other methods are used to develop applications which are able to detect entities automatically rather than manually as the traditional ways. It makes a lot of benefits for the research works as well as for human life. For examples, it can help people to extend the databases which can be used for several purposes of human, or can help scientists finds some new entities. However, scientists normally focus more on the biomedical or somethings that related to human genes. The research in Agronomy now is very popular and plays an important role for human nutrition.

## 4 Future work

Our purpose is finding a method to extract the information of genes, proteins in terms of name or symbols from text data to integrate the database of plant genes for several research purposes. Many different experiments, tests and optimization have been left for the future due to the lack of time. However, the result of the model is positive for further research and at this moment, it can be considered as a good state-of-the-art and a standard for our project.

In the future, we would like to deploy a couple of optimized ideas so as to improve the result of the current work and start to implement the new methodology to not only improve the accuracy but also optimize the time computing. The following ideas could be tested.

For the state-of-the-art, besides the NER method using LSTM-CRF, we saw that there is another exploitive approach named NER-Hybrid ( proposed by

Basaldella.M, et al.(2017) [1]) also based on NER but it is the combination of different techniques compared to the first one. This methodology combines the traditional dictionary-based method named OGER with other frameworks using the techniques and features of machine learning algorithms to improve the efficiency. In the near future, we expect to re-implement the method and compare the performance on the same benchmarks with the LSTM-CRF to make the process of finding the state-of-the-art become more positive.

For optimizing the accuracy and time-computing, during the process of building our own deep neural network model to extract biological entities from raw texts that include thousands of scientific paper, we want to apply high performance computing (HPC) on GPU to optimize the computing time of training process for a deep sequential model to handle a large dataset. There would be a challenge when applying parallel computing for the sequential model. However, it is a useful and exploitable direction for future development.

## References

1. Basaldella, M., Furrer, L., Tasso, C., Rinaldi, F.: Entity recognition in the biomedical domain using a hybrid approach. *Journal of biomedical semantics* **8**(1) (2017) 51
2. Lafferty, J., McCallum, A., Pereira, F.C.: Conditional random fields: Probabilistic models for segmenting and labeling sequence data. (2001)
3. Monaco, M.K., Stein, J., Naithani, S., Wei, S., Dharmawardhana, P., Kumari, S., Amarasinghe, V., Youens-Clark, K., Thomason, J., Preece, J., Pasternak, S., Olson, A., Jiao, Y., Lu, Z., Bolser, D., Kerhornou, A., Staines, D., Walts, B., Wu, G., D'Eustachio, P., Haw, R., Croft, D., Kersey, P.J., Stein, L., Jaiswal, P., Ware, D.: Gramene 2013: Comparative plant genomics resources. *Nucleic Acids Research* **42**(D1) (2014)
4. : The Arabidopsis Information Resource (TAIR): gene structure and function annotation. *Nucleic Acids Research* **36**(Database issue) (jan 2008) D1009–1014
5. Habibi, M., Weber, L., Neves, M., Wiegandt, D.L., Leser, U.: Deep learning with word embeddings improves biomedical named entity recognition. *Bioinformatics* **33**(14) (2017) i37–i48
6. Hochreiter, S., Schmidhuber, J.: Long short-term memory. *Neural computation* **9**(8) (1997) 1735–1780
7. Graves, A., Jaitly, N., Mohamed, A.r.: Hybrid speech recognition with deep bidirectional lstm. In: *Automatic Speech Recognition and Understanding (ASRU), 2013 IEEE Workshop on, IEEE (2013) 273–278*
8. Graves, A., Schmidhuber, J.: Framewise phoneme classification with bidirectional lstm networks. In: *Neural Networks, 2005. IJCNN'05. Proceedings. 2005 IEEE International Joint Conference on. Volume 4., IEEE (2005) 2047–2052*
9. Ling, W., Luís, T., Marujo, L., Astudillo, R.F., Amir, S., Dyer, C., Black, A.W., Trancoso, I.: Finding function in form: Compositional character models for open vocabulary word representation. *arXiv preprint arXiv:1508.02096* (2015)

10. Lample, G., Ballesteros, M., Subramanian, S., Kawakami, K., Dyer, C.: Neural architectures for named entity recognition. arXiv preprint arXiv:1603.01360 (2016)