



HAL
open science

Testing giant planet formation in the transitional disk of SAO 206462 using deep VLT/SPHERE imaging

A.L. Maire, T. Stolker, S. Messina, A. Müller, B.A. Biller, T. Currie, C.
Dominik, C.A. Grady, A. Boccaletti, M. Bonnefoy, et al.

► To cite this version:

A.L. Maire, T. Stolker, S. Messina, A. Müller, B.A. Biller, et al.. Testing giant planet formation in the transitional disk of SAO 206462 using deep VLT/SPHERE imaging. *Astronomy and Astrophysics* - A&A, 2017, 601, pp.A134. 10.1051/0004-6361/201629896 . hal-01709002

HAL Id: hal-01709002

<https://hal.science/hal-01709002v1>

Submitted on 14 Feb 2018

HAL is a multi-disciplinary open access archive for the deposit and dissemination of scientific research documents, whether they are published or not. The documents may come from teaching and research institutions in France or abroad, or from public or private research centers.

L'archive ouverte pluridisciplinaire **HAL**, est destinée au dépôt et à la diffusion de documents scientifiques de niveau recherche, publiés ou non, émanant des établissements d'enseignement et de recherche français ou étrangers, des laboratoires publics ou privés.

Testing giant planet formation in the transitional disk of SAO 206462 using deep VLT/SPHERE imaging[★]

A.-L. Maire¹, T. Stolker², S. Messina³, A. Müller^{1,4}, B. A. Biller^{5,1}, T. Currie⁶, C. Dominik², C. A. Grady⁷, A. Boccaletti⁸, M. Bonnefoy⁹, G. Chauvin⁹, R. Galicher⁸, M. Millward¹⁰, A. Pohl^{1,11,12}, W. Brandner¹, T. Henning¹, A.-M. Lagrange⁹, M. Langlois^{13,14}, M. R. Meyer^{15,16}, S. P. Quanz¹⁶, A. Vigan¹⁴, A. Zurlo^{17,18,14}, R. van Boekel¹, E. Buenzli¹⁶, T. Buey⁸, S. Desidera¹⁹, M. Feldt¹, T. Fusco²⁰, C. Ginski²¹, E. Giro¹⁹, R. Gratton¹⁹, N. Hubin²², J. Lannier⁹, D. Le Mignant¹⁴, D. Mesa¹⁹, S. Peretti²³, C. Perrot⁸, J. R. Ramos¹, G. Salter¹⁴, M. Samland^{1,12}, E. Sissa¹⁹, E. Stadler⁹, C. Thalmann¹⁶, S. Udry²³, and L. Weber²³

(Affiliations can be found after the references)

Received 14/10/2016; accepted 14/02/2017

ABSTRACT

Context. The SAO 206462 (HD 135344B) disk is one of the few known transitional disks showing asymmetric features in scattered light and thermal emission. Near-infrared scattered-light images revealed two bright outer spiral arms and an inner cavity depleted in dust. Giant protoplanets have been proposed to account for the disk morphology.

Aims. We aim to search for giant planets responsible for the disk features and, in the case of non-detection, to constrain recent planet predictions using the data detection limits.

Methods. We obtained new high-contrast and high-resolution total intensity images of the target spanning the *Y* to the *K* bands (0.95–2.3 μm) using the VLT/SPHERE near-infrared camera and integral field spectrometer.

Results. The spiral arms and the outer cavity edge are revealed at high resolutions and sensitivities without the need for aggressive image post-processing techniques, which introduce photometric biases. We do not detect any close-in companions. For the derivation of the detection limits on putative giant planets embedded in the disk, we show that the knowledge of the disk aspect ratio and viscosity is critical for the estimation of the attenuation of a planet signal by the protoplanetary dust because of the gaps that these putative planets may open. Given assumptions on these parameters, the mass limits can vary from ~ 2 – 5 to ~ 4 – 7 Jupiter masses at separations beyond the disk spiral arms. The SPHERE detection limits are more stringent than those derived from archival NaCo/*L'* data and provide new constraints on a few recent predictions of massive planets (4–15 M_J) based on the spiral density wave theory. The SPHERE and ALMA data do not favor the hypotheses on massive giant planets in the outer disk (beyond $0.6''$). There could still be low-mass planets in the outer disk and/or planets inside the cavity.

Key words. protoplanetary disks – methods: data analysis – stars: individual: SAO 206462 (HD 135344B) – techniques: high angular resolution – techniques: image processing – techniques: spectroscopic

1. Introduction

SAO 206462 (HD 135344B) is a rapidly rotating ($v \sin i \sim 83 \text{ km s}^{-1}$) Herbig Ae/Be F4Ve star of age 9 ± 2 Myr and mass $1.7^{+0.2}_{-0.1} M_{\odot}$ (Müller et al. 2011) located at 156 ± 11 pc (Gaia Collaboration et al. 2016) in the Upper Centaurus Lupus star-forming region, known to harbor a transitional disk resolved in scattered light (Grady et al. 2009; Muto et al. 2012; Garufi et al. 2013; Wahhaj et al. 2015; Stolker et al. 2016) and in thermal emission, both at mid-IR (Doucet et al. 2006; Maaskant et al. 2013) and (sub-)mm wavelengths (Brown et al. 2009; Andrews et al. 2011; Lyo et al. 2011; Pérez et al. 2014; Pinilla et al. 2015; van der Marel et al. 2016b,a). It is part of a widely separated ($\sim 21''$, i.e. ~ 3300 au) binary with SAO 206463 (Coulson & Walther 1995). Transitional disks are associated with an intermediate stage of disk evolution, where the dust opacity has been reduced (perhaps tracing a dip in the gas surface density) in the near- and mid-IR (e.g., Strom et al. 1989; Espaillat et al. 2014). Several scenarios have been proposed that can explain the gas and dust depletion such as photoevaporation, dust grain growth,

or ongoing planet formation (Hollenbach et al. 1994; Dullemond & Dominik 2005; Lin & Papaloizou 1993).

Measurements of the CO line profiles (Dent et al. 2005; Pontoppidan et al. 2008; Lyo et al. 2011) and of the stellar rotation (Müller et al. 2011) for SAO 206462 are consistent with an almost face-on geometry for the system ($i \sim 11^\circ$). The star is actively accreting ($\sim 10^{-11}$ – $10^{-8} M_{\odot}/\text{yr}$, Garcia Lopez et al. 2006; Grady et al. 2009). The disk is composed of a massive outer component (up to $\sim 2''$ i.e. ~ 300 au, Lyo et al. 2011) with masses for the dust $M_{\text{dust}} = 1.3 \times 10^{-4} M_{\odot}$ and gas $M_{\text{gas}} = 1.5 \times 10^{-2} M_{\odot}$ (van der Marel et al. 2016b), scattered-light spiral features within ~ 80 au indicative of dynamical processes (Muto et al. 2012), a large inner sub-mm dust cavity (~ 50 au, Andrews et al. 2011), and a sub-au dust accretion disk (Fedele et al. 2008; Carmona et al. 2014; Menu et al. 2015). Recently, Stolker et al. (2016) presented SPHERE optical and near-IR polarimetric images showing shadowing of the outer disk by warping/perturbation of the inner disk and the (marginal) detection of scattered light up to ~ 160 au.

One plausible explanation for the spiral features seen in the SAO 206462 system is that they might be driven by planets. Two approaches have been used to investigate this hypothesis in the literature. The first approach consists in fitting analytical formu-

[★] Based on observations collected at the European Organisation for Astronomical Research in the Southern Hemisphere under ESO programmes 095.C-0298 and 090.C-0443.

Table 1. Observing log.

| UT date | Seeing (") | τ_0 (ms) | AM start/end | Mode | Bands | DIT (s) \times Nfr | Δ PA (°) | SR |
|------------|------------|---------------|--------------|------------|----------|----------------------|-----------------|-----------|
| 2015/05/15 | 0.45–0.57 | 7–10 | 1.04–1.03 | IRDIFS_EXT | YJH+K1K2 | 64 \times 64 | 63.6 | 0.78–0.85 |

Notes. The columns provide the observing date, the seeing and coherence time measured by the differential image motion monitor (DIMM) at 0.5 μm , the airmass at the beginning and the end of the sequence, the observing mode, the spectral bands, the DIT (detector integration time) multiplied by the number of frames in the sequence, the field of view rotation, and the Strehl ratio measured by the AO system.

lae derived for linear perturbations, i.e. one planet driving one spiral, to the observations. Muto et al. (2012) proposed two planets located beyond ~ 50 au with masses of $\sim 0.5 M_J$. Recently, Stolker et al. (2016) used a similar approach assuming two planets located interior or exterior to the spirals and showed that planets in the latter configuration with separations $\gtrsim 100$ au provided a better match to their shape. The second approach exploits hydrodynamical simulations, which can account for non-linear perturbations, i.e. one planet can drive more than one spiral (e.g., Dong et al. 2015; Zhu et al. 2015; Juhász et al. 2015; Pohl et al. 2015). In particular, some studies have predicted one massive (~ 4 – $15 M_J$) planet located exterior to the SAO 206462 spirals (Fung & Dong 2015; Bae et al. 2016; Dong & Fung 2017).

Garufi et al. (2013) suggested that one planet of mass from 13 to $5 M_J$ located at 17.5–20 au could explain the increase in the cavity size measured for the small dust grains (28 ± 6 au) and for the large dust grains (39 to 50 au, Brown et al. 2009; Andrews et al. 2011; Lyo et al. 2011)¹. This planet could also explain the spiral features. They could not rule out several massive planets inside the cavity, although this hypothesis seems at odds with the presence of diffuse gas. They also rejected several mechanisms not involving perturbing planet(s) (photoevaporation, dust grain growth, magnetorotational instability, Hollenbach et al. 1994; Dullemond & Dominik 2005; Chiang & Murray-Clay 2007) to explain the disk cavity. They finally showed that the disk is globally highly stable (see also Stolker et al. 2016). Nevertheless, they could not rule out gravitational interactions between SAO 206462 and SAO 206463 as exciting mechanism for the disk spirals, if the components have highly eccentric orbits.

Recently, van der Marel et al. (2016a) presented ALMA data at spatial resolutions of 0.16", which show that the previously detected asymmetric millimeter dust ring (Pérez et al. 2014; Pinilla et al. 2015) consists of an inner ring and an outer asymmetric feature. They also proposed a different hypothesis that can explain the disk features detected in both scattered light and thermal emission, where a vortex creates one spiral arm and a planet inside the cavity produces the other spiral arm.

Studies tried to detect stellar and substellar companions in the disk of SAO 206462. Pontoppidan et al. (2008) ruled out a stellar companion inside the cavity from the detection of CO gas. VLT/NaCo imaging at 1.75 and 2.12 μm discarded low-mass stellar companions within the gap region ($>0.22 M_\odot$ beyond 14 au) and brown dwarf companions more massive than $>19 M_J$ beyond 70 au (Vicente et al. 2011)². However, these limits are not sensitive to planetary-mass companions.

¹ All these studies assumed a system distance of 140 pc.

² They assumed for the star a distance of 140 pc and an age of 8 Myr, as well as the BT-DUSTY evolutionary tracks of Allard et al. (2011). Using the contrasts measured at the corresponding angular separations and assuming the evolutionary models, distance and age used in this paper, we derive mass limits of $>0.34 M_\odot$ beyond 16 au and $>28 M_J$ beyond 80 au.

We present in this paper new high-contrast images of SAO 206462 covering the spectral range 0.95–2.32 μm obtained with the instrument VLT/SPHERE (Beuzit et al. 2008) as part of the SpHERE INfrared survey for Exoplanets (SHINE; Langlois et al., in prep.). We describe the observations and the data reduction (Sects. 2 and 3). Then, we discuss the detection of point sources (Sect. 4), the observed disk features (Sect. 5) and the detection limits on putative giant protoplanets with respect to predictions from the literature (Sect. 6). Finally, we analyze the sensitivity of the detection limits to the protoplanetary dust opacity considering the presence of gaps opened by putative giant embedded planets (Sect. 7).

2. Observations

SPHERE (Beuzit et al. 2008) is an extreme adaptive optics (AO) instrument dedicated to high-contrast and high-resolution imaging of young giant exoplanets and circumstellar disks. The AO system (Fusco et al. 2006) includes a fast 41 \times 41-actuators wavefront control, pupil stabilization, differential tip tilt control, and toric mirrors (Hugot et al. 2012) for beam transportation to the coronagraphs (Boccaletti et al. 2008) and science instruments. In this paper, we used the near-infrared science instruments, the infrared dual-band imager and spectrograph IRDIS (Dohlen et al. 2008) and the integral field spectrometer IFS (Claudi et al. 2008; Antichi et al. 2009). The focal plane masks of the near-infrared coronagraphs are located in the common path and infrastructure of SPHERE, whereas the Lyot stops are located in IFS and IRDIS and are optimized for each instrument.

We observed SAO 206462 on 2015 May 15 UT in the IRDIFS_EXT mode (Table 1). In this mode, IRDIS and IFS are operated in parallel, with IRDIS observing in the K12 filter pair ($\lambda_{K1} = 2.110 \mu\text{m}$ and $\lambda_{K2} = 2.251 \mu\text{m}$, $R \sim 20$, Vigan et al. 2010) and IFS in the YJH bands (0.95–1.65 μm , $R \sim 33$, Claudi et al. 2008). The observing conditions were good and stable (wind speed ~ 6 – 10 m/s, see Table 1). The star was imaged with an apodized pupil Lyot coronagraph (Soummer 2005) of diameter 185 mas (Boccaletti et al. 2008). At the beginning and the end of the sequence, we acquired two dedicated calibrations. First, we recorded for flux calibration purposes unsaturated images of the star out of the coronagraphic mask and inserting a neutral density filter of average transmission $\sim 1/100^3$ in the optical path. Then, we obtained coronagraphic images with four cross-wise faint replicas of the star artificially generated using the deformable mirror (Langlois et al. 2013) to measure the star location for frame registering (Sect. 3). After the observation, we measured sky backgrounds. However, because of a hardware issue, the second unsaturated PSF image and the sky background images for IRDIS were not recorded properly. As a consequence,

³ The transmission curves of the neutral density filters can be found in the User Manual available at www.eso.org/sci/facilities/paranal/instruments/sphere/doc.html.

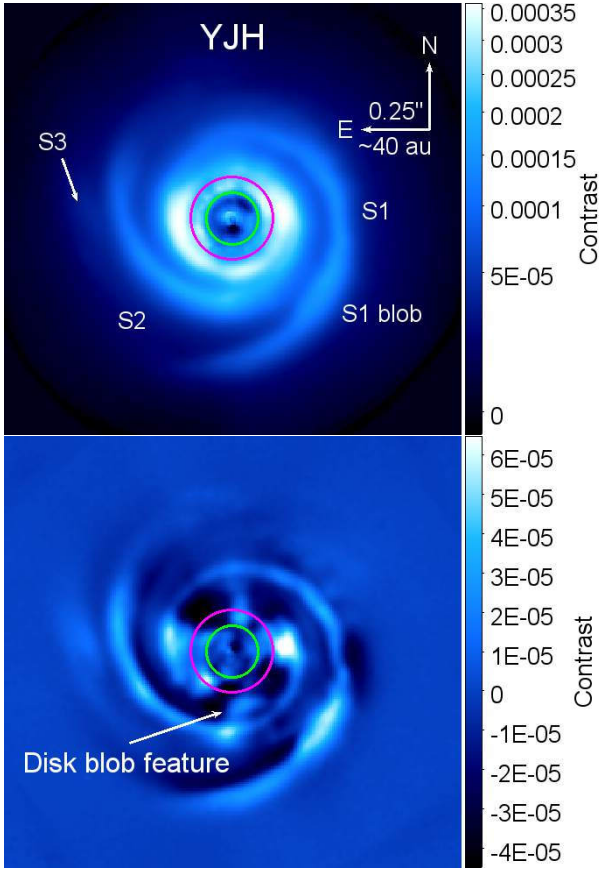


Fig. 1. SPHERE/IFS images in the *YJH* bands normalized to the unsaturated non-coronagraphic PSF peak after RDI (*top panel*) and classical ADI (*bottom panel*). The intensity scale is square root for the RDI image and linear for the ADI image. The green and magenta circles indicate the diameter of the coronagraph mask and regions dominated by the stellar residuals (diameter \approx 0.27''), respectively (see text).

we used for the sky subtraction the closest sky backgrounds (taken the previous night) obtained with the same filter and coronagraph configuration as our observations and scaled them to the DIT and the background measured at large separation in the science images. This non-optimal sky subtraction can affect the accuracy of the background subtraction to values below \sim 8% for the IRDIS RDI images, which are used to measure the disk photometry (Sect. 5). All the other calibration data (darks, detector flats, wavelength calibration, IFU flats) were obtained during the following day.

3. Data reduction and analysis

The data were reduced with the SPHERE Data Center pipeline, which uses the Data Reduction and Handling software (v0.15.0, Pavlov et al. 2008) and dedicated IDL routines for the IFS data reduction (Mesa et al. 2015). The pipeline subtracts the sky background, corrects for the detector flat field, removes bad pixels, derives the IFS wavelength calibration, corrects for the IFU flat, corrects for anamorphism ($0.60\pm 0.02\%$, Maire et al. 2016a), and registers the frames using the coronagraphic images taken with the satellite spots. We measured the full width at half maximum of the point-spread function (PSF) for the IRDIS images to be \sim 56 mas (*K1*) and \sim 59 mas (*K2*) and for

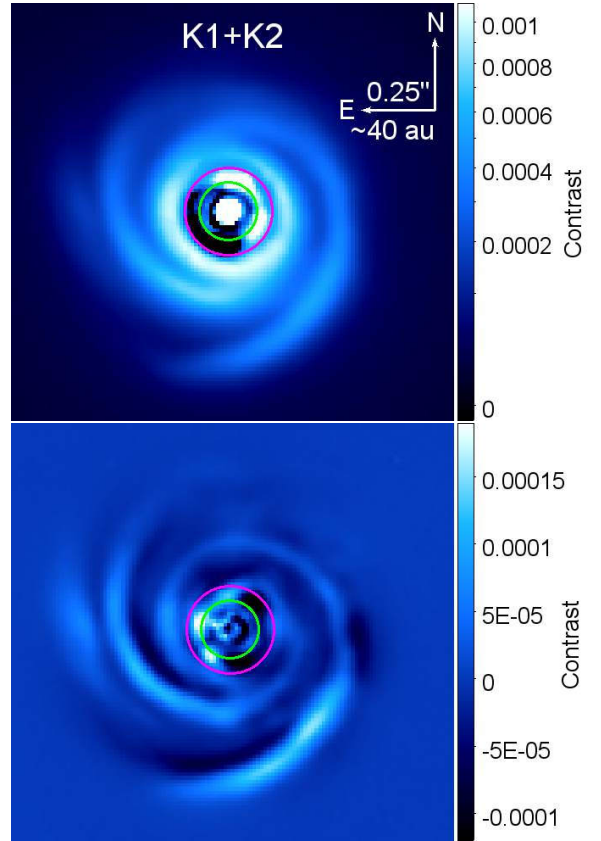


Fig. 2. Same as Fig. 1 but for the SPHERE/IRDIS *K1+K2*-band images.

the IFS images to be \sim 37 mas (*J*) and \sim 42 mas (*H*)⁴. Then, the data were analyzed with a consortium image processing pipeline (R. Galicher, private comm.). This pipeline allows for several imaging post-processing techniques: classical angular differential imaging (ADI, Marois et al. 2006a), subtraction of a radial profile from the data, Locally Optimized Combination of Images (LOCI, Lafrenière et al. 2007), Template-LOCI (TLOCI, Marois et al. 2014), and principal component analysis (PCA, see Soummer et al. 2012; Amara & Quanz 2012). We also considered reference differential imaging (RDI) in order to obtain unbiased views of the disk morphology. To build the RDI reference, we scaled in intensity the images of another star without any disk features obtained in the same observing mode during the previous night. The quasi-static speckle pattern did not vary significantly between the two sequences, allowing for efficient rejection of the stellar residuals. We show in Figs. 1 and 2 the median-collapsed IFS and IRDIS images obtained with this method and with classical ADI and in Fig. 3 the full field of view of the IRDIS classical-ADI image. Regions inside the magenta circles in Figs. 1 and 2 were found to be dominated by the stellar residuals using the chromaticity of the stellar residuals.

Three point sources are detected in the IRDIS field (Fig. 3). Their photometry and astrometry were measured using the TLOCI algorithm applied to each spectral band separately. We divided each science frame into annuli of 1.5 full width at half maximum. Then, for each science frame and annulus, we computed a reference frame of the stellar residuals using the best

⁴ The temporal variations are below 0.2 mas. For IRDIS, we measured the variations on the individual frames recorded before the sequence. The diffraction limits for SPHERE data are \sim 31, \sim 42, \sim 54, and \sim 58 mas in the *J*, *H*, *K1*, and *K2* bands, respectively. Our data are thus diffraction-limited in the *H* and *K* bands, but not in the *J* band.

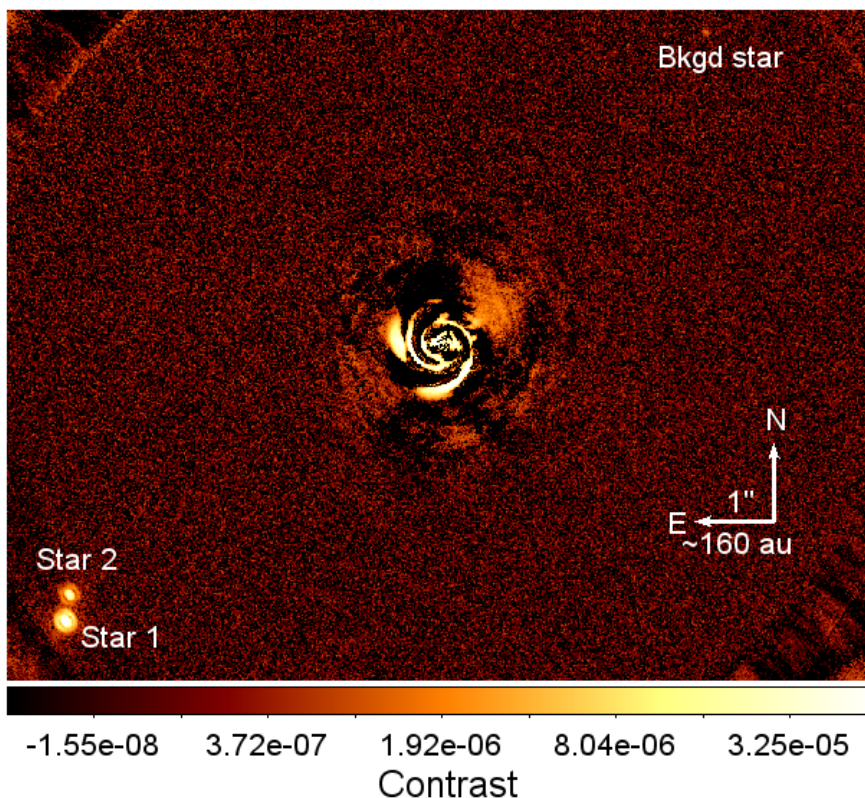


Fig. 3. Classical-ADI SPHERE/IRDIS $K1$ -band image normalized to the maximum of the unsaturated non-coronagraphic PSF showing the close-in environment of SAO 206462 with the known stellar binary (noted Stars 1 and 2) and a well-separated point source classified as a background object (labeled “Bkgd star”, see text). The intensity scale is logarithmic.

linear combination of the 80 most correlated frames for which the self-subtraction of mock point sources, modeled using the observed PSF, was at maximum 20%. These parameters were selected from internal tests for the analysis of the consortium data. Negative synthetic companions (Marois et al. 2010; Bonnefoy et al. 2011) modeled from the observed unsaturated PSF were inserted in the pre-processed data at the location of the detected point sources. We then processed the data assuming the TLOCI coefficients computed for the analysis without the synthetic companions. The subpixel position and the flux of the modeled images were optimized to minimize the image residuals within a disk of radius 1.5 full width at half maximum (FWHM) centered on the measured companions (Galicher & Marois 2011). The error bars include the variations in the stellar flux during the sequence (estimated from the fluctuations of the stellar residuals, 0.009 mag for the $K1$ band) and the accuracy of the fitting procedure. The error term related to the variations in the PSF could not be estimated because no IRDIS PSF was recorded after the sequence (Sect. 2). The astrometry of the three detected companions (Table 2) was calibrated using pixel scales of 12.267 ± 0.009 and 12.263 ± 0.009 mas/pix for the $K1$ and $K2$ filters respectively, and a north angle offset of $-1.712 \pm 0.063^{\circ 5}$ (Maire et al. 2016b).

We finally used TLOCI to derive the S/N maps for point sources. Each pixel value was divided by the standard deviation of the flux measured in an annulus of 1 FWHM at the same angular separation. The TLOCI throughput was assessed using synthetic companions inserted at regular separations between $0.15''$ and $6''$. We iterated the TLOCI analysis on several position angles to average the effects of random speckle residuals. The azimuthally averaged contrast curves discussed in Sect. 6 were es-

⁵ We also accounted for offsets of $-135.99 \pm 0.11^{\circ}$ for the derotator zeropoint and $+100.48 \pm 0.10^{\circ}$ for the IFS field orientation with respect to the IRDIS field (Maire et al. 2016b).

Table 2. Astrometry and photometry relative to the star of the point sources detected in the IRDIS field of view (Fig 3).

| | Filter | ρ (mas) | θ (deg) | Δmag |
|-----------|--------|---------------|-------------------|--------------------|
| Star 1 | $K1$ | 5723 ± 6 | 126.13 ± 0.14 | 9.13 ± 0.04 |
| | $K2$ | 5723 ± 6 | 126.14 ± 0.14 | 9.26 ± 0.03 |
| Star 2 | $K1$ | 5499 ± 6 | 123.70 ± 0.14 | 10.91 ± 0.03 |
| | $K2$ | 5499 ± 6 | 123.70 ± 0.14 | 10.98 ± 0.03 |
| Bkgd star | $K1$ | 5035 ± 10 | 319.84 ± 0.17 | 14.55 ± 0.10 |
| | $K2$ | 5038 ± 19 | 319.88 ± 0.25 | 14.55 ± 0.23 |

Notes. The astrometric error bars were derived assuming an error budget including the error fitting, the uncertainties in the estimation of the location of the star (1.2 mas from observations of bright stars, Vigan et al. 2016), pixel scale, north angle offset, and instrument distortion, and the accuracy of the dithering procedure (0.74 mas, Vigan et al. 2016). The photometric error bars do not include the temporal variations of the PSF because only one PSF was relevant for the data analysis (see Sect. 2).

timated from these S/N maps. We note that although the disk signal is strongly attenuated by the TLOCI algorithm (which was optimized for point-source detection) in the SPHERE and NaCo data (the latter are described in Sect. 6.1), the disk residuals increase somewhat the measured noise level. This effect is stronger in the SPHERE data, because of the higher S/N detection of the disk. However, these effects are intrinsic to the data and do not have to be corrected for. Finally, we corrected the SPHERE detection limits for the coronagraph transmission radial profile (A. Boccaletti, priv. comm.) and the small sample statistics following the prescription in Mawet et al. (2014).

We note in the IFS ADI image (bottom panel of Fig. 1) a blob feature interior to the S2 spiral south of the star at $\sim 0.20''$

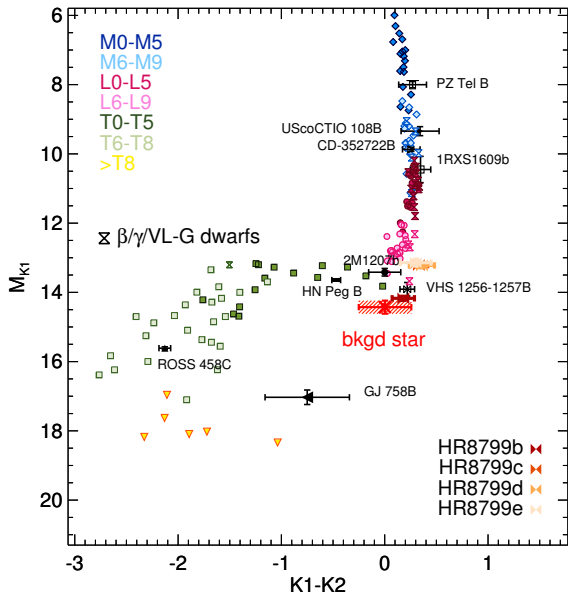


Fig. 4. Color-magnitude diagram of the point source noted “bkgd star” in Fig. 3 and Table 2. Field dwarfs of M, L, and T types, very low-surface gravity dwarfs, and a sample of directly-imaged brown-dwarf and giant planet companions are also shown for comparison. Note that the point source is subsequently classified as a background object from a common proper motion test (see Sect. 4), hence its distance is unlikely to be the same as for SAO 206462.

at the $\sim 3\sigma$ level, excluding the pixels at the same separation dominated by the disk features. The feature is visible at the same location in all the individual IFS images and also in the images obtained after subtraction of a radial profile, but not in aggressive PCA and TLOCI reduced data (results not shown). We conclude that this feature is likely a residual from a disk feature.

4. Detection of point sources

The two first point sources listed in Table 2 (Stars 1 and 2) were classified as a background stellar binary by Grady et al. (2009). For the last point source (denoted “bkgd star” for background star), we derived a mass range of $\sim 2\text{--}4 M_J$ according to the atmospheric and evolutionary models of Baraffe et al. (2015) and Baraffe et al. (2003) considering the uncertainties on its measured magnitudes and the system distance and age (Müller et al. 2011). Using consortium tools developed for the classification and the ranking of the companion candidates discovered in SPHERE/SHINE, we also computed a background probability for this point source of $\sim 13.5\%$ assuming the Besançon model predictions (Robin et al. 2003). With the same suite of tools, we derived the color-magnitude diagram of the point source shown in Fig. 4 to compare its $K1 - K2$ color to the colors of field and young dwarfs covering the M, L, T, and Y types. Further details about the derivation of the color-magnitude diagram are provided in Mesa et al. (2016). Its $K1 - K2$ color is similar to a late-L or early-T dwarf, but its $K1$ magnitude is slightly fainter with respect to what is expected for objects of these spectral types. The point source is also seen in an HST/STIS image published in Grady et al. (2009) (program GO-8674, P.I. Lagrange). We retrieved the reduced image (corrected for cosmetics and distortion) from the HST archive, and measured the astrometry of the point source ($r = 4932 \pm 28$ mas,

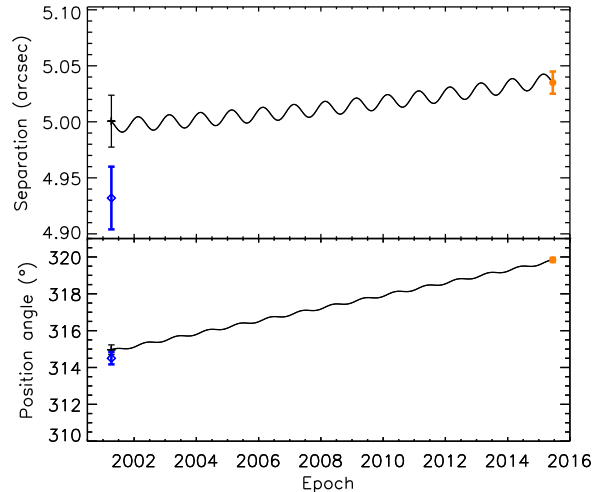


Fig. 5. Relative astrometry of the point source labeled “bkgd star” in Fig. 3 (colored data points with thick error bars) measured in SPHERE data (epoch 2015.37) and archival HST/STIS data (epoch 2001.27). The black cross represents the locations assuming that the point source is a stationary background object and accounting for the uncertainties in the proper motion and the distance of SAO 206462.

$\theta = 314.5 \pm 0.33^\circ$) to compare it with the SPHERE astrometry. The results are shown in Fig. 5. The motion of the point source between the two epochs reflects the stellar proper motion ($\mu_\alpha = -20.159 \pm 0.603$ mas/yr, $\mu_\delta = -22.481 \pm 0.719$ mas/yr, Gaia Collaboration et al. 2016); it is consistent with an object not gravitationally bound to SAO 206462. Therefore, we conclude that the point source is a background star.

5. Disk imaging and photometry

We analyze the morphology and photometry of the detected disk features using the spatial and spectral information provided by the SPHERE data. A full modeling of the total intensity images of the disk will allow a more quantitative analysis of the physical constraints, but is beyond the scope of this paper.

5.1. Disk features

The spiral arms and the outer edge of the inner cavity of the disk are clearly detected in the SPHERE data with non-aggressive differential imaging techniques (top panels of Figs. 1 and 2, and Fig. 6), providing a nice illustration of the instrument capabilities for high-contrast imaging of faint extended sources such as circumstellar disks. The disk is also clearly seen in individual RDI IFS images (Appendix A). Except for an increase in the disk bulk contrast with respect to the star, we do not see any clear evidence of morphological spectral variations. The IRDIS and IFS images confirm that the disk spirals are launched axisymmetrically at the same corotation radius, as also found by Stolker et al. (2016). We also detect in both IFS and IRDIS images the S3 spiral feature previously noted by Garufi et al. (2013) and Stolker et al. (2016) in the east part of the S2 spiral arm, especially at the longest wavelengths. We finally note that the outer rim looks brighter in the IRDIS K -band image (top panel of Fig. 2).

We do not recover in the SPHERE images the radially extended spots to the northeast and the southwest seen in GPI total intensity J -band images by Wahhaj et al. (2015). The latter suggested that they could be accretion streams from the disk into the

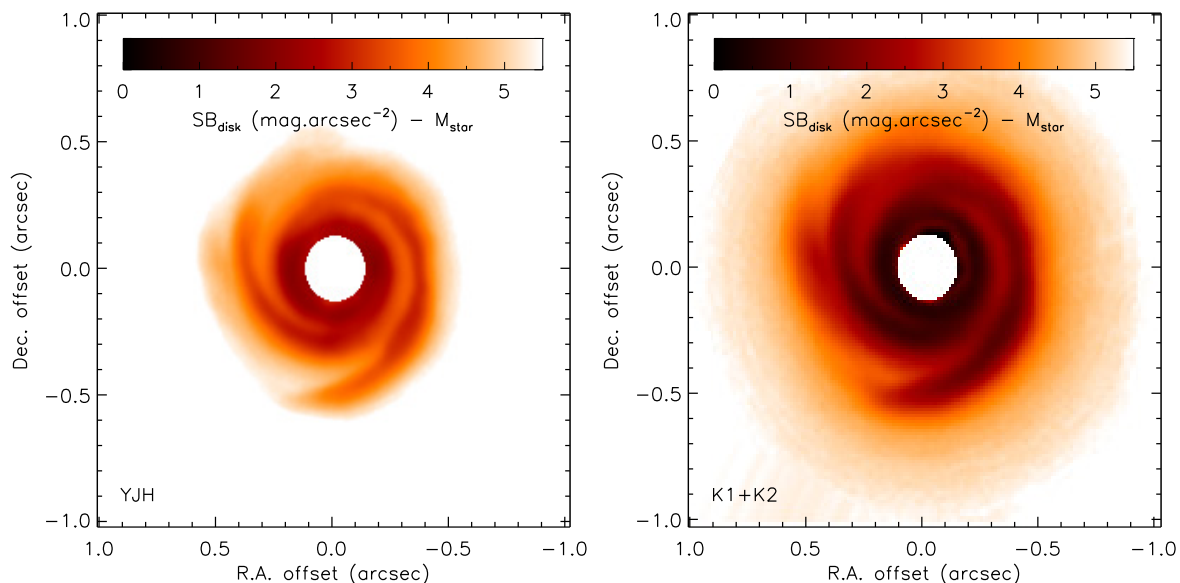


Fig. 6. RDI IFS (*left*) and IRDIS (*right*) deprojected images collapsed over the spectral channels. The centers of the images have been masked out numerically in order to remove the star. North is up and East to the left.

star. Nevertheless, they mentioned that they could also be ADI and/or GPI artifacts because of the small field of view rotation of the data and the presence of similar features in other GPI data (e.g., Perrin et al. 2015). Our dataset covers a field of view rotation 1.8 times larger than the GPI data, which suggests that the features detected in the GPI data are probably artifacts.

Stolker et al. (2016) detected shadow lanes in SPHERE polarized light images covering the *R* to the *J* bands (0.6–1.25 μm) obtained in late March and early May 2015. Figure 7 shows the polar projections of the r^2 -scaled RDI IFS and IRDIS images with the positions of the shadow lanes in the IRDIS *J*-band polarized image obtained on 15 May 2015, i.e. about two weeks prior to these observations. Features A, B, and D (notations from Stolker et al. 2016) are recovered in both polar-projected images, but feature C is only seen in the IFS image. Feature C was not seen in the SPHERE data obtained in late March 2015. The minima in the total intensity images are not as pronounced as in the polarized light images. This might be caused by sensitivity effects.

5.2. Photometry and morphology of the spiral arms

We used the RDI IFS and IRDIS images (top panels of Figs. 1 and 2) to derive the radial surface brightness profiles of the disk along its major and minor axes (Fig. 8), assuming that the major axis has a position angle of 62° (Pérez et al. 2014). For IFS, we analyzed the *Y*, *J*, and *H* spectral bands separately. We used radial cuts through the disk of 1 pixel in width. The conversion of the intensity into $\text{mag}/\text{arcsec}^2$ was performed using the 2MASS stellar magnitudes ($J = 7.279$, $H = 6.587$, and $K = 5.843$, Cutri et al. 2003) and the ratio of the maximum to the total flux of the measured unsaturated non-coronagraphic PSF. With this normalization choice, the profiles provide information on the scattering efficiency of the dust grains with the wavelength (see Quanz et al. 2012). We did not include the error on the photometric calibration. The noise levels (horizontal dashed lines) were estimated at large separation from the star.

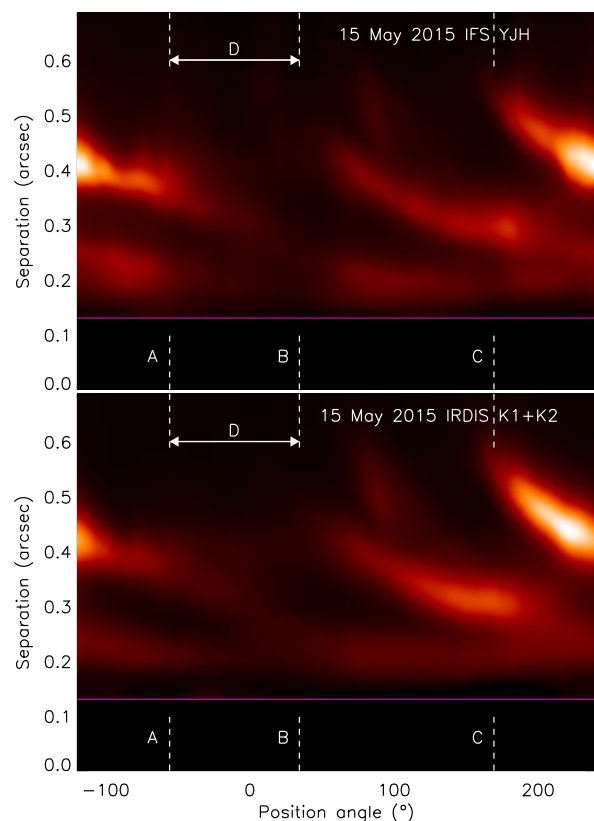


Fig. 7. Polar projections of the deprojected RDI IFS (top) and IRDIS (bottom) images scaled by the distance to the star. We also show the locations of the shadow lanes found and defined by Stolker et al. (2016). The intensity scale is different from the scale of Fig. 6 in order to enhance the contrast of the shadow lanes. The centers of the images have been masked out numerically in order to remove the star (magenta lines).

We note the similar overall shapes of the profiles of the spectral bands with bumps associated to the two spiral arms at the

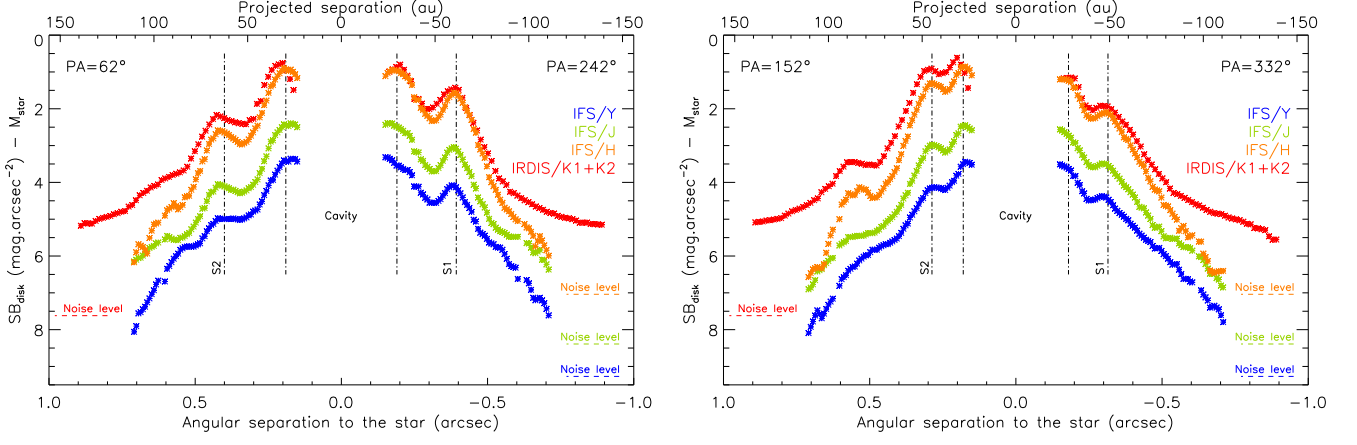


Fig. 8. Radial surface brightness profiles along the major (*left panel*) and minor (*right panel*) axes of the disk for the RDI IFS and IRDIS images. The profiles were corrected for the spectral dependency of the stellar flux (the label M_{star} on the y-axis refers to the stellar magnitude). The noise levels at 1σ are indicated as dashed horizontal lines (see text).

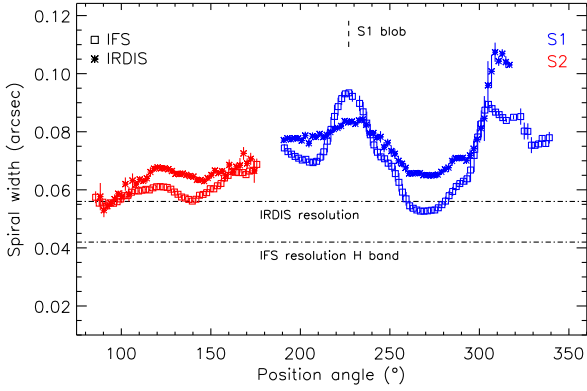


Fig. 9. Widths of the spiral arms as a function of the position angle for both collapsed RDI IFS and IRDIS images (see text).

same locations. Since the spiral pattern is not centrosymmetric (the opening angle of S1 decreases abruptly by $\sim 15^\circ$ at the location of its bright blob feature, cf. Figs. 1 and 2), the locations of the bumps are not centrosymmetric. The S/N of the disk detection drops quickly exterior to the spiral arms. The IFS radial profiles also show a sharp increase (~ 2.5 mag) from the *Y* to the *H* bands, which suggests an increasing efficiency of the scattering with the wavelength. An increasing trend (although less significant) was also seen in the polarized-light radial profiles from the *R* to the *J* bands presented in Stolker et al. (2016). The IRDIS *K*-band profile does not seem to confirm the increasing trend observed for the IFS data. As discussed in Stolker et al. (2016), the red colors of the dust grains could be explained if they are composed of μm -sized aggregates (Min et al. 2016).

Then, we registered the spine, photometry, and width of each spiral arm in the collapsed RDI IFS and IRDIS images. The images were first deprojected assuming for the disk an inclination of 11° (Dent et al. 2005; Pontoppidan et al. 2008; Lyo et al. 2011) and a position angle of 62° (Pérez et al. 2014) and scaled by the square of the distance to the star. Then, we rotated the images by steps of 2° in order to align the spiral parallel to the horizontal direction and to fit it with a 1D Gaussian function using boxes of $\sim 0.15''$ width (i.e., 20 pixels for IFS and 12 pixels for IRDIS) width approximately centered on the spiral spine to extract the location of the spine, the intensity at the spine location, and the

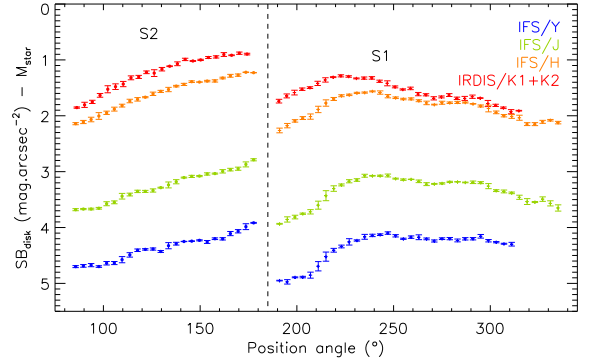


Fig. 10. Intensity peaks of the spiral arms normalized to the unsaturated non-coronagraphic PSF intensity peak as a function of the position angle and the spectral band (see text). For the sake of clarity, we considered a sampling of 4° for these measurements.

width of the spiral. The error bars on the data points were assessed using their standard deviation in a three-bin sliding box.

We show the width of the spirals as a function of the position angle in Fig. 9. Each spiral arm exhibits a similar overall shape in the IFS and IRDIS images. As the position angle increases (i.e., going closer to the star), the IFS profile for S1 shows alternating maxima and minima. The peak-to-peak variations are ~ 25 – 40 mas. The IFS profile for S2 has a constant width of ~ 60 mas in its external part then exhibits a slightly increasing slope for position angles larger than $\sim 140^\circ$. We note some local differences in the IRDIS profiles with respect to the IFS data that can be attributed to a poorer spatial resolution or sensitivity effects (shallower minima depths).

Figure 10 shows the surface brightness profiles along the spiral spines for the IFS and IRDIS bands. We retrieve the increasing trend of the disk surface brightness with the wavelength seen for the radial surface brightness profiles (Fig. 8), especially for the IFS bands.

Finally, we extracted from the deprojected and r^2 -scaled RDI images the reflectance spectra integrated on the S1 bright blob feature, the S1 regions outside its blob feature, and S2. Figure 11 shows the spectra normalized to the stellar spectrum measured in the unsaturated non-coronagraphic data. The error bars on the measurements account for the errors in the photometric calibration and uncertainties in the RDI subtraction. We removed the

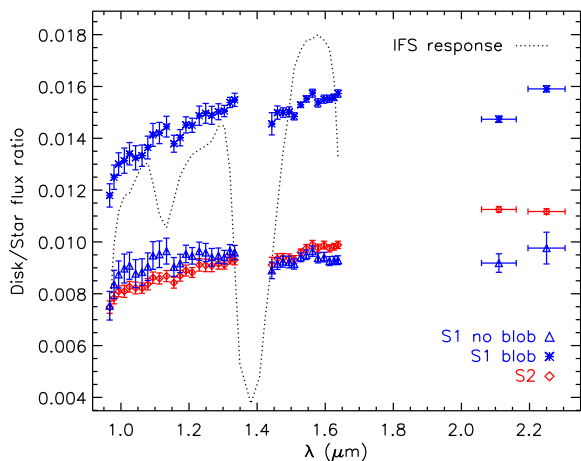


Fig. 11. Reflectance spectra of the spiral arms covering the IFS and IRDIS passbands (see text). The horizontal error bars on the IRDIS measurements are the filter widths. The black dotted line shows the IFS instrument response normalized to 0.018. The spectral features at 1.13 and 1.38 μm are water telluric absorptions.

spectral parts at $\sim 1.34\text{--}1.43\ \mu\text{m}$ because of a strong water telluric absorption band which affects significantly the S/N of the corresponding images. The S1 region is brighter than S2, as previously noted (Garufi et al. 2013), because of the contribution from its bright blob feature. The spectra of the S1 blob feature and of S2 show a red slope in the *H* band, whereas the spectrum of S1 outside its blob feature looks rather flat. The spectrum of S2 looks flat in the *K* band, where S1 appears slightly red. We also note spectral differences at the shortest wavelengths; S2 and the S1 blob look red, while the S1 regions outside its blob feature have a flatter spectrum. However, we stress that these S1 regions are poorly detected at wavelengths shorter than 1.13 μm because of the overlapping of remaining residuals from the AO correction radius ($R_{\text{corr}} = N_{\text{act}} \times \lambda / 2D$, with N_{act} the number of actuators on one side of the deformable mirror). The scattering efficiency is higher at longer wavelengths for S2, while for S1 it increases across the *YJH* bands and then flattens in the *K* band. This feature was also seen for the surface brightness profiles (Figs. 8 and 10). The spectral differences between S1 and S2 and within S1 could indicate that the surface dust grains might have different optical properties according to their location, which can be a sign of different composition or size. The SPHERE reflectance spectra of SAO 206462 look somewhat different from the SPHERE spectra of HR 4796A (Milli et al. 2017), which show an increasing slope at $\sim 1\text{--}1.1\ \mu\text{m}$ and then a plateau in the *J* band.

5.3. Summary

The analysis of the SPHERE total intensity images confirm the red colors for the dust grains and the presence of the shadow lanes (though at lower significance) found by Stolker et al. (2016) in SPHERE polarized-light images. They also indicate sharp variations ($\sim 40\%$) in the S1 width, while the S2 width does not show strong variations. Finally, the reflectance spectra suggest local spectral differences between S1 and S2 and within S1, which might be a hint of different composition or sizes of the dust grains.

6. Detection limits on putative giant protoplanets

6.1. Archival NaCo/*L'* imaging data

We reduced and analyzed archival NaCo/*L'* imaging data (ESO program 090.C-0443, P.I. Currie) using a custom pipeline for the reduction steps (cosmetics, frame registering) and the SPHERE consortium image processing tools (Sect. 3). SAO 206462 ($L = 4.89$, Coulson & Walther 1995) was observed on 2013 March 24 UT around the meridian passage (airmass start/end 1.09–1.14) for $\sim 3.33\ \text{h}$ in pupil-tracking and saturated imaging modes. The star was regularly dithered between the bottom quadrants of the detector for sky background measurements. The observing conditions were good at the beginning of the sequence (DIMM seeing 0.5–0.7'' and coherence time $\sim 3\ \text{ms}$), but deteriorated with time (DIMM seeing 1.1–1.4'' and coherence time $\sim 1.5\ \text{ms}$ at the end of the observations). Two hundred data cubes of 160 co-adds of 0.25 s were recorded covering a field of view rotation of 152.2° . After binning the frames by groups of 100 and removing poor-quality frames based on the statistics of the total flux measured in an annulus of inner and outer radii 0.25'' and 0.5'', we were left with 226 images ($\sim 71\%$ of the complete sequence). The inner and outer radii of the annulus were chosen to exclude the regions dominated by the bright stellar PSF wings and the background noise. The unsaturated PSF was recorded several times at regular intervals during the sequence using the same individual integration time and number of co-adds with the ND_LONG neutral density filter (transmission $\sim 1.78\%$) for a total integration time of 480 s. No point source was detected close to the star. We computed the TLOCI 5σ detection limits using the same parameters as in Sect. 3 and corrected them for the small sample statistics (Mawet et al. 2014).

The SPHERE and NaCo contrast limits are shown in the left panel of Fig. 12. The thermal background increases with the wavelength, hence the poorer contrast performance observed for IRDIS in the *K2* band and NaCo in the *L'* band at large separations. The SPHERE contrasts are deeper than the NaCo contrasts by factors greater than ~ 10 in the speckle-limited regions ($\leq 0.6''$), illustrating the improved performances of new dedicated high-contrast instruments like SPHERE and GPI.

6.2. Comparison of the detection limits to planet predictions

Several predictions for planet(s) shaping the disk of SAO 206462 have been proposed (Muto et al. 2012; Garufi et al. 2013; Fung & Dong 2015; Bae et al. 2016; van der Marel et al. 2016a). Using linear equations from the spiral density wave theory, Muto et al. (2012) suggested two planets with separations beyond $\sim 50\ \text{au}$ by fitting independently the two spiral arms seen in Subaru/HiCIAO data and with masses of $\sim 0.5\ M_J$ by using the amplitude of the spiral wave. Garufi et al. (2013) proposed that one planet of mass 5–13 M_J located inside the cavity at a separation of 17.5–20 au could be responsible for the different cavity sizes measured for the small and large dust grains. Fung & Dong (2015) presented scaling relations between the azimuthal separation of the primary and secondary arms and the planet-to-star mass ratio for a single companion on a circular orbit with a mass between Neptune mass and 16 M_J around a $1\ M_\odot$ star. They predicted with 30% accuracy that a single putative planet responsible for both spiral features of SAO 206462 would have a mass of $\sim 6\ M_J$. Bae et al. (2016) presented dedicated hydrodynamical simulations of the SAO 206462 disk and proposed that both the bright scattered-light feature (Garufi et al. 2013) and the dust emission peak (Pérez et al. 2014) seen for the southwestern spiral arm re-

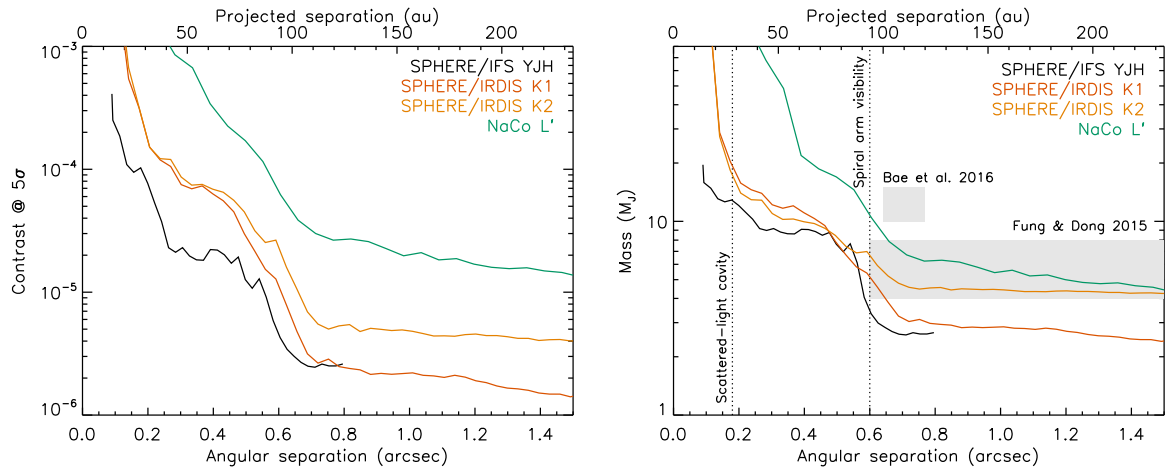


Fig. 12. 5σ detection limits in contrast with respect to the star (*left*) and in planet mass (*right*). For the conversion of the SPHERE contrast limits, we used the atmospheric and evolutionary models of Baraffe et al. (2015) and Baraffe et al. (2003), while for the NaCo contrast limits, we assumed the models of Allard et al. (2012) and Baraffe et al. (2003). The locations of the outer edge of the scattered-light cavity and the outer visibility radius of the spiral arms are also shown (Stolker et al. 2016). Greyed areas indicate theoretical planet predictions from Fung & Dong (2015) and Bae et al. (2016).

sult from the interaction of the spiral arm with a vortex, although a vortex alone can account for the S1 brightness peak. They suggested that a $10\text{--}15 M_J$ planet may orbit at $100\text{--}120$ au from the star. However, ALMA observations at two different frequencies seem to contradict a dust particle trapping scenario by a vortex (Pinilla et al. 2015). Stolker et al. (2016) performed new fitting of the spiral arms observed in SPHERE data and found a best-fit solution with two protoplanets located exterior to the spirals: $r_1 \sim 168$ au, $\theta_1 \sim 52^\circ$ and $r_2 \sim 99$ au, $\theta_2 \sim 355^\circ$. van der Marel et al. (2016a) proposed that the features seen in thermal emission in ALMA data and the scattered-light spiral arms are produced by a single massive giant planet located inside the cavity at a separation of ~ 30 au. Recently, Dong & Fung (2017) used the contrast of the spiral arms to predict a giant planet of $\sim 5\text{--}10 M_J$ at ~ 100 au.

We present the SPHERE and NaCo mass limits in the right panel of Fig. 12. We assumed a system age of 9 Myr (Müller et al. 2011) and the predictions of the atmospheric and evolutionary “hot-start” models of Baraffe et al. (2015) and Baraffe et al. (2003) for the SPHERE limits and of Allard et al. (2012) and Baraffe et al. (2003) for the NaCo limits, respectively⁶. The detection limits are deeper with respect to the work of Vicente et al. (2011), with the exclusion of companions more massive than $\sim 14\text{--}12 M_J$ in the range $0.12\text{--}0.2''$ ($19\text{--}31$ au), $\sim 8 M_J$ beyond $0.5''$ (~ 80 au) and $\sim 4 M_J$ beyond $0.6''$ (~ 90 au). They do not allow us to strongly constrain the predictions of Muto et al. (2012), Garufi et al. (2013), and van der Marel et al. (2016a). They seem at odds with the predictions of a massive ($\sim 4\text{--}15 M_J$) giant planet in the outer disk by Fung & Dong (2015), Bae et al. (2016), and Dong & Fung (2017). However, such models are expected to be degenerate. A less massive planet closer to the spiral arms should produce perturbations of similar amplitude to a more massive planet farther out. Nevertheless, the pitch angle of the produced spiral arms changes with the location of the planet (which also corresponds to the launching point of the spiral wave) because of its dependency on the sound speed and disk temperature. For SAO 206462, the planet should still be more

massive than $\sim 2 M_J$ according to the predictions of Fung & Dong (2015) to account for the large pitch angle observed between the spiral arms ($\sim 130^\circ$).

Estimating detection limits from high-contrast images in terms of planet mass depends on the assumptions for the system age and the mass-luminosity relation (e.g., Marley et al. 2007; Spiegel & Burrows 2012; Mordasini et al. 2012). We note that for the upper age limit for the system of 16 Myr (van Boekel et al. 2005) the SPHERE K1-band mass limits are $>11\text{--}7 M_J$ beyond $0.5\text{--}0.7''$ according to the models of Baraffe et al. (2015, 2003). Hence, a massive giant planet formed following a “hot-start” formation mechanism would have been detected in the SPHERE data if located exterior to the spiral features. A massive giant planet in a wide orbit such as predicted by Fung & Dong (2015), Bae et al. (2016), and Dong & Fung (2017) would still be compatible with the SPHERE constraints if formed according to a “warm-start” scenario with low initial entropy (for e.g., a $10\text{-}M_J$ planet with age 16 Myr and initial entropy below $10 k_B/\text{baryon}$ could not be excluded assuming the models of Spiegel & Burrows 2012).

Another possible planet scenario for SAO 206462 would be a low-mass protoplanet embedded in the disk and surrounded by a circumplanetary disk. This scenario has been proposed for planet companions/candidates in the transitional disks of HD 100546 (Quanz et al. 2013, 2015; Currie et al. 2015) and HD 169142 (Billler et al. 2014; Reggiani et al. 2014). The mass-luminosity relations of standard evolutionary models (e.g., Baraffe et al. 2003) assume giant planets without circumplanetary disks. A giant planet surrounded by a circumplanetary disk could be significantly brighter than the same planet without a disk, hence the mass-luminosity relations of standard evolutionary models could be pessimistic. Therefore, the mass limits shown in Fig. 12 could be upper mass limits for a given system age. However, a lower-mass giant planet with a circumplanetary disk would exert weaker gravitational perturbations on the disk than a more massive giant planet without a disk and produce a different spiral shape (e.g., smaller opening angle, smaller spiral contrast). Modeling studies of disk spirals suggested that lower planet mass limits could be estimated using an observed disk spiral pattern (? , see previous paragraph).

⁶ The Baraffe et al. (2015) atmospheric models do not provide planet luminosities in the NaCo filters.

6.3. Summary

The SPHERE near-IR detection limits improve significantly the constraints on putative planets in the SAO 206462 disk with respect to the study of [Vicente et al. \(2011\)](#) and the detection limits measured in archival NaCo thermal IR images. The SPHERE data exclude massive giant planets ($>3 M_J$ assuming a “hot-start” scenario and a system age of 9 Myr) exterior to the spiral arms, which may rule out a few recent predictions based on spiral modelling ([Fung & Dong 2015](#); [Bae et al. 2016](#); [Dong & Fung 2017](#)). However, we cannot exclude low-mass giant planets in the outer disk and/or giant planets inside the scattered-light cavity, as predicted in other studies ([Muto et al. 2012](#); [Garufi et al. 2013](#); [van der Marel et al. 2016a](#)). These planets could still account for the morphology of the SAO 206462 spirals.

7. Effect of protoplanetary dust on the detectability of embedded planets

The detection of planets embedded in protoplanetary disks is expected to be hampered by the dust grains residing between the disk midplane and surface (e.g., [Quanz et al. 2015](#)), hence Fig. 12 likely provides limits of detection that are too optimistic. However, a massive planet will open a (partial) gap (e.g., [Crida et al. 2006](#); [Malik et al. 2015](#)) leading to a smaller attenuation of a planet’s thermal emission. Since the dust opacity decreases with the wavelength, the SPHERE/YJHK detection limits are expected to be more affected than the NaCo/L’ detection limits.

7.1. Methods and assumptions

We determined the minimum masses of embedded planets that would be detectable given the derived IRDIS/K1 and NaCo/L’ contrast limits (Fig. 12) by assuming a simple disk structure and considering theoretical mass-luminosity relations for giant planets without circumplanetary disk from [Baraffe et al. \(2015, 2003\)](#) at the age of the SAO 206462 system. We used DIANA standard dust opacities ([Woitke et al. 2016](#)) in the K1 and L’ bands of 330 and 250 cm^2/g , respectively, and a surface density profile inversely proportional to the distance to the star. We assumed a total dust mass of $2 \times 10^{-4} M_\odot$, an inner and outer disk radius of 28 and 300 au ([Carmona et al. 2014](#)) and a zero surface density within the scattered light cavity (28 au). Since the disk is observed close to face-on ([van der Marel et al. 2016b](#)), we have neglected projection effects.

Then, we take a planet gap depth into account by following the empirical relations of [Fung et al. \(2014\)](#)

$$\frac{\Sigma_p}{\Sigma_0} = 0.14 \left(\frac{q}{10^{-3}} \right)^{-2.16} \left(\frac{\alpha}{10^{-2}} \right)^{1.41} \left(\frac{H/r}{0.05} \right)^{6.61} \quad (1)$$

for $10^{-4} \leq q \leq 5 \times 10^{-3}$,

$$\frac{\Sigma_p}{\Sigma_0} = 4 \times 10^{-3} \left(\frac{q}{5 \times 10^{-3}} \right)^{-1.00} \left(\frac{\alpha}{10^{-2}} \right)^{1.26} \left(\frac{H/r}{0.05} \right)^{6.12} \quad (2)$$

for $5 \times 10^{-3} \leq q \leq 10^{-2}$,

where Σ_p is the surface density at the orbital radius of the planet, Σ_0 the initial surface density before a gap was formed, q the planet-to-star mass ratio, α the dimensionless Shakura–Sunyaev viscosity parameter and H/r the disk aspect ratio. Eqs. (1) and (2) are strongly dependent on the assumed properties for the disk and the dust grains, which are not well constrained by observations and/or modeling of the disk of SAO 206462. We had to

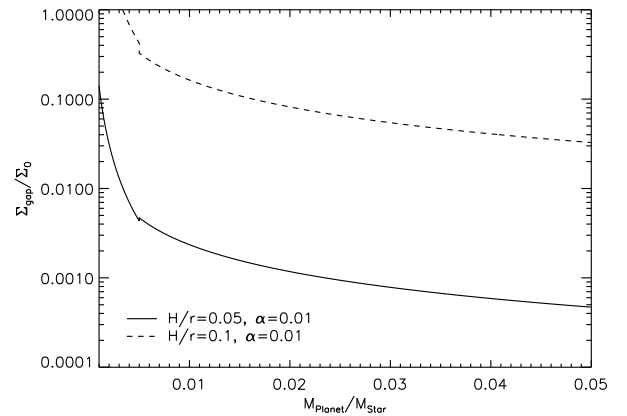


Fig. 13. Depth of gaps opened by putative giant planets in the disk of SAO 206462 as a function of the planet-to-star mass ratio computed from the empirical relations in [Fung et al. \(2014\)](#) for the two cases considered in this paper (see text). For the pessimistic case (dashed curve) and a planet-to-star mass ratio below $\sim 3.5 \times 10^{-3}$ (i.e., planet mass below $\sim 6 M_J$), a planet cannot open a gap in the disk, hence the dust column density above the planet is not reduced.

make assumptions on several of these parameters for our analysis in the remainder of this section. We note that our quantitative results are highly sensitive to our parameter choice. [Fung et al. \(2014\)](#) investigated the morphology of planet gaps up to mass ratios of 10^{-2} (i.e., planet masses below $17 M_J$ in the case of SAO 206462), while the NaCo and IRDIS detection limits probe planet-to-star mass ratios above this limit at close-in separations beyond the scattered-light cavity (Fig. 12). For these cases, we simply used Eq. (2). For the disk aspect ratio and viscosity, we considered two extreme cases shown in Fig. 13: (1) deep planet gaps by assuming $H/r = 0.05$ and $\alpha = 10^{-2}$ (for this value of H/r , the assumed value for α has little effect on the derived results) and (2) shallow planet gaps corresponding to $H/r = 0.1$ and $\alpha = 10^{-2}$. The vertical optical depth to the disk midplane is now given by $\tau = \kappa \Sigma / 2$, with κ the dust opacity, and the attenuation of a planet’s thermal emission is a factor $e^{-\tau}$.

7.2. Mass limits vs. disk aspect ratio and viscosity

Figure 14 shows the IRDIS/K1 and NaCo/L’ planet mass limits for the two cases of protoplanetary dust attenuation compared to the limits for which the attenuation has been neglected. We note that for a disk aspect ratio of 0.05, the attenuation by the dust is negligible even for a high viscosity because the disk properties are more favorable to the formation of deep gaps (Fig. 13). For a disk aspect ratio of 0.1 combined with a high viscosity, the effect is significant at all separations beyond the scattered-light cavity (for $\alpha = 10^{-3}$, the mass limits are degraded by less than $\sim 0.5 M_J$). This is expected because the planet gaps are shallower (Fig. 13). In particular, a planet less massive than $\sim 6 M_J$ cannot open a gap so that the dust column density above the planet is not reduced for this mass range. We also note that the IRDIS/K1 mass limits are deeper than the NaCo/L’ limits. The decreased sensitivity to the protoplanetary dust opacity in the L’ band does not compensate for the poorer contrasts provided by the NaCo observations. Higher contrast observations in the L’ band by ~ 1 mag could compete with our SPHERE data.

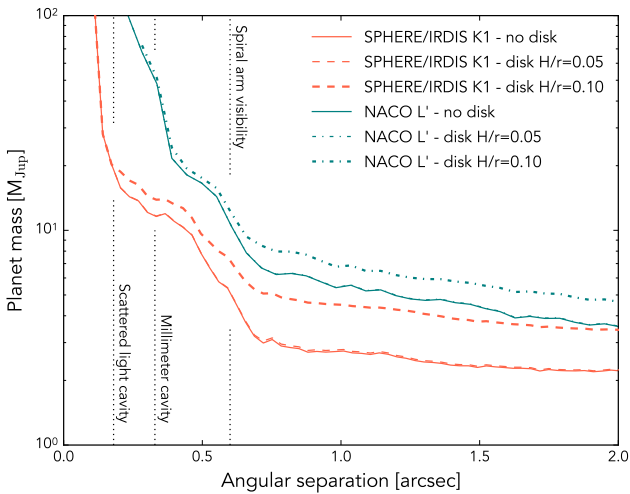


Fig. 14. Planet mass detection limits (5σ) for the IRDIS $K1$ -band and NaCo L' -band images, both with the effect of attenuation of a planet emitted flux by protoplanetary dust (dashed and dash-dotted curves, see text) compared to the case where the attenuation by protoplanetary dust is neglected (solid curves, see Fig. 12).

7.3. Detectability of gaps opened by giant embedded planets

In this section we test the detectability of the gaps opened by putative embedded planets with the masses probed by SPHERE in Fig. 14. In particular, we want to investigate the detectability of a planet gap beyond the spiral arms because several authors have suggested that a single massive (~ 4 – $15 M_J$) planet located in these regions might be responsible for both spiral features (Dong et al. 2015; Zhu et al. 2015; Fung & Dong 2015; Bae et al. 2016). Our SPHERE/IRDIS observations seem to reject the high-mass tail of these predictions, since the mass limits beyond the spiral arms are $\sim 5 M_J$ (see red dashed curve for $H/r=0.05$ and $\alpha=0.01$ in Fig. 14). However, a giant planet of $\sim 4 M_J$ close to the spiral arms (~ 0.6 – $0.65''$ if $H/r=0.05$ and $\alpha=0.01$) would still be compatible with the detection limits and could account for the spiral morphology.

For this analysis, we considered the case $H/r = 0.05$ and $\alpha = 10^{-2}$. This case allows for the detection of lower-mass giant planets in the disk, hence the widths of the gaps produced by these planets may be considered as lower limits. We show in Fig. 15 the width of the planet gaps as a function of the orbital radius⁷. The Hill radius R_H is a first-order estimate of the gap width in the gas and can be applied to gaps in the small dust grains (traced in scattered light) assuming that they are coupled to the gas. However, this is a lower limit since the gas gap width can be as large as $5 R_H$ (Dodson-Robinson & Salyk 2011). Therefore, we also used the empirical formula from Kanagawa et al. (2016), derived from 2D hydrodynamical simulations with planets of mass ratios 10^{-4} – 2×10^{-3} (i.e., ~ 0.2 – $4 M_J$ in the case of SAO 206462). When comparing the latter gap widths to the SPHERE resolution, we find that the gaps are significantly larger, meaning that a massive planet that is located beyond the spiral arms might have opened a detectable gap. Interestingly, the disk was marginally detected in scattered light beyond the spiral arms up to $1''$ by Stolker et al. (2016) without any indication of a gap in that region. Given that the disk is not exactly seen face-on, we finally note that we cannot rule out shadowing

⁷ The curves were cut to separations larger than the scattered-light cavity radius because we assumed zero surface density for the dust inside the cavity.

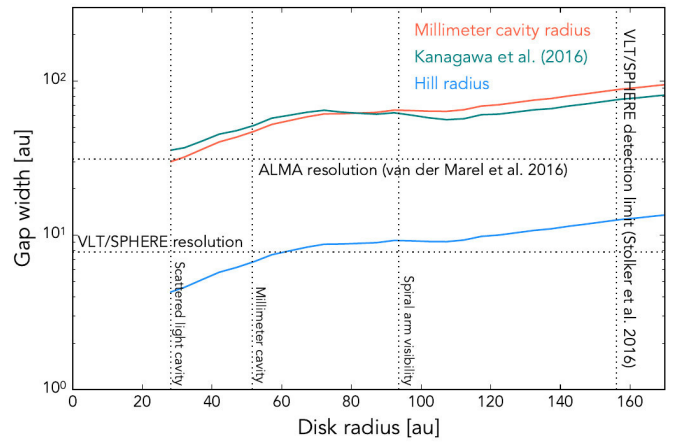


Fig. 15. Gap widths in the gas and large dust grains for the $K1$ -band planet mass limits, corrected for the attenuation by the dust (see Fig. 14). The gas gap widths are assumed to be valid for the small dust grains, which are probed by the SPHERE data. The Hill radius gives a first-order estimate of a gap width in the gas (blue). We also considered the empirical relation from the hydrodynamical simulations of Kanagawa et al. (2016) (green curve, see text for details). The cavity radius in the large dust grains (red) is assumed to be $\sim 7 R_H$ following the work of Pinilla et al. (2012).

of the gaps by their outer/inner wall because of the uncertainties in the disk scale height.

However, scattered-light observations probe the disk surface so the detectability of a planet gap depends on the disk aspect ratio which, for a flaring disk, increases toward larger disk radii (Crida et al. 2006). Sub-mm data, like those provided by ALMA, probe the dust grains located in the disk midplane, and hence are more relevant for such an analysis. Figure 15 shows the approximate gap width ($7 R_H$) in the large, mm-sized grains as a result of dust trapping by a gas giant planet of mass ratio 10^{-3} – 3×10^{-3} in a pressure maximum (Pinilla et al. 2012). The gap width is also larger than the angular resolution of recent ALMA observations (van der Marel et al. 2016a). However, the disk appears to be compact in both ^{13}CO and dust continuum (e.g., van der Marel et al. 2016b) with only a marginal detection of the disk beyond $0.5''$. This feature might indicate that the disk is truncated by a companion located beyond the spiral arms, which would support the interpretation by Dong et al. (2015). On the other hand, the low S/N of the sub-mm detection beyond $0.5''$ might have been limited by the sensitivity of the ALMA observations.

7.4. Summary

Since the disk dust may attenuate the signal of an embedded planet and lead to an underestimation of the mass detection limits, we estimated the amplitude of this potential effect for the SAO 206462 disk. The analysis is in fact strongly dependent on the assumptions on the disk properties, especially its aspect ratio and viscosity. By considering two extreme cases for the planet gap depths, we showed that the mass limits in Fig. 12 might be underestimated by up to $\sim 2 M_J$ exterior to the spiral arms. Then, we analyzed the detectability of gaps opened by planets with masses compatible with the detection limits in the case of deep planet gaps. The comparison of the gap widths for small dust grains to the SPHERE resolution suggests that such gaps might have been resolved outside the scattered-light cavity. Nevertheless, the sensitivity of the scattered-light data to planet gaps is potentially hampered by the disk scale height, which is poorly

constrained for SAO 206462. Therefore, we considered ALMA data and found that planet gaps in the mm-sized grains could also have been resolved exterior to the cavity measured at these wavelengths. While current ALMA data exclude such gaps at separations up to 80 au, they cannot exclude them at larger separations because of their limited sensitivity. We note that very little dust/gas is detected outside of the spiral arms where putative planets are predicted to reside, so both ALMA and SPHERE data do not strongly constrain the presence of putative planet gaps.

8. Conclusions

We presented new high-resolution and high-contrast observations with the instrument VLT/SPHERE of the transitional disk of SAO 206462 to search for giant embedded planets responsible for its spiral features and, in the case of non-detection, constrain recent predictions for such planets. We also exploited the spatial and spectral resolutions offered by SPHERE to analyze the colors of the disk spiral arms and to search for spatial variations in the spectral properties of the dust grains at the surface of the disk. The main results of the analysis are as follows:

Search for giant protoplanets and constraints on predictions

1. The IRDIS data shows a point source at a separation of $\sim 5''$ in addition to the known background stellar binary at the same separation range. From the IRDIS colors and the IRDIS and HST/STIS astrometry of the point source, we classify it as a background star.
2. Considering that the disk dust may attenuate the signal of a planet embedded within a disk, we evaluated that the mass detection limits computed from the contrast achieved in the SPHERE data may be underestimated by up to $\sim 2 M_J$ at separations exterior to the spiral arms.
3. The SPHERE detection limits allowed us to exclude the presence of planets more massive than $\sim 5\text{--}7 M_J$ beyond the spiral arms, which provides new constraints for the hydrodynamical modeling of the disk spiral arms. The non-detection of planet gaps up to separations of ~ 80 au in ALMA data do not favor the presence of massive giant planets in the outer disk close to the spiral arms, although we cannot exclude that the non-detection might be related to a lack of resolution of the instrument. However, very little disk signal is detected in the ALMA data outside the spiral arms, so the observational constraints on the presence of planet gaps are loose. A giant planet of $\sim 4\text{--}6 M_J$ in the outer disk would still be compatible with the SPHERE data and can account for the spiral morphology. Another possibility would be that the spiral arms are driven by one or more giant planets located inside the scattered-light cavity.
4. Although NaCo/ L' -band data are less sensitive to protoplanetary dust opacity than SPHERE near-IR observations, the poorer contrasts achieved in archival NaCo data in this band make the mass limits shallower than SPHERE/IRDIS limits in the $K1$ band.

Imaging and spectrophotometry of the disk features

1. We confirmed the shadow lanes detected in SPHERE polarized data (Stolker et al. 2016), although at lower significance.
2. We found sharp variations of $\sim 40\%$ for the width of spiral arm S1, while the width of spiral arm S2 does not exhibit strong variations.

3. We found a factor of ~ 10 increase for the disk surface brightness from the Y to the K bands, hinting at an increasing scattering efficiency of the dust grains at the surface of the disk. This could be explained by the presence of μm -sized dust aggregates.
4. The reflectance spectra suggest small spectral variations for the dust properties between spiral arms S1 and S2 and between the bright blob feature and the other parts of S1.

In order to perform further searches for protoplanets in the SAO 206462 disk, dedicated SPHERE observations might increase the contrast/mass constraints beyond the disk spirals. Another method of interest would be to use $H\alpha$ imaging using SPHERE or MagAO given the system young age and that young protoplanets may still accrete. In addition, sparse aperture masking observations with 8–10 m ground-based telescopes will allow the scattered-light cavity for substellar companions to be probed as close as $\sim 50\text{--}200$ mas ($\sim 8\text{--}31$ au), well within the angular resolution provided by high-contrast coronagraphic imagers on the same class of telescopes, but at limited contrasts of $\sim 10^2\text{--}10^3$ ($\sim 30\text{--}300 M_J$ in the L' band for the age of SAO 206462 according to the predictions of Allard et al. 2012; Baraffe et al. 2003). We note that putative embedded planets surrounded by circumplanetary disks could be detected with these instruments down to significantly lower masses. In the near future, JWST imaging will probe for very low-mass planets outside the spiral arms, while high-contrast imagers on 30–40 m telescopes will be required to search the scattered-light cavity for planetary-mass companions.

New promising possibilities for disk analyses are now offered by the high angular resolution combined with the spectral and/or polarimetric capabilities of the high-contrast imaging instruments SPHERE, GPI, and CHARIS. In particular, the spectra of distinct parts of a disk can be compared to search for differences indicating the presence of dust grain populations with different properties (e.g., scattering efficiency, size).

Finally, we outline the complementarity of scattered-light and thermal emission information, such as those brought by SPHERE and ALMA to constrain the presence of giant protoplanets in transitional disks. More multiwavelength analyses of such targets will help to better understand the relations between some features seen in these disks (spirals, gaps, rings) and putative giant embedded planets. These analyses will require further multiwavelength efforts.

Acknowledgements. The authors thank the ESO Paranal Staff for support in conducting the observations and Philippe Delorme and Eric Lagarde (SPHERE Data Center) for their help with the data reduction. We thank Myriam Benisty, Philippe Thébaud, and an anonymous referee for helpful comments. A.-L.M., S.M., S.D., R.G., and D.M. acknowledge support from the “Progetti Premiali” funding scheme of the Italian Ministry of Education, University, and Research. We acknowledge financial support from the Programme National de Planétologie (PNP) and the Programme National de Physique Stellaire (PNPS) of CNRS-INSU. This work has also been supported by a grant from the French Labex OSUG@2020 (Investissements d’avenir – ANR10 LABX56). M.R.M and S.P.Q. acknowledge the financial support of the SNSF. The project is supported by CNRS, by the Agence Nationale de la Recherche (ANR-14-CE33-0018). This work has made use of the SPHERE Data Centre, jointly operated by OSUG/IPAG (Grenoble), PYTHEAS/LAM/CeSAM (Marseille), OCA/Lagrange (Nice) and Observatoire de Paris/LESIA (Paris). This research made use of the SIMBAD database and the VizieR Catalogue access tool, both operated at the CDS, Strasbourg, France. The original description of the VizieR service was published in Ochsenbein et al. (2000, A&AS 143, 23). SPHERE is an instrument designed and built by a consortium consisting of IPAG (Grenoble, France), MPIA (Heidelberg, Germany), LAM (Marseille, France), LESIA (Paris, France), Laboratoire astronomique de l’Université de Genève (Switzerland), ETH Zurich (Switzerland), NOVA (Netherlands), ONERA (France), and ASTRON (Netherlands), in collaboration with ESO. SPHERE was funded by ESO, with additional contributions from the CNRS (France), MPIA (Germany), INAF (Italy), FINES (Switzer-

land), and NOVA (Netherlands). SPHERE also received funding from the European Commission Sixth and Seventh Framework Programs as part of the Optical Infrared Coordination Network for Astronomy (OPTICON) under grant number RII3-Ct-2004-001566 for FP6 (2004–2008), grant number 226604 for FP7 (2009–2012), and grant number 312430 for FP7 (2013–2016).

References

- Allard, F., Homeier, D., & Freytag, B. 2011, in *Astronomical Society of the Pacific (ASP) Conf. Ser.*, ed. C. Johns-Krull, M. K. Browning, & A. A. West, Vol. 448, 91
- Allard, F., Homeier, D., & Freytag, B. 2012, *Royal Society of London Philosophical Transactions Series A*, 370, 2765
- Amara, A. & Quanz, S. P. 2012, *MNRAS*, 427, 948
- Andrews, S. M., Wilner, D. J., Espaillat, C., et al. 2011, *ApJ*, 732, 42
- Antichi, J., Dohlen, K., Gratton, R. G., et al. 2009, *ApJ*, 695, 1042
- Bae, J., Zhu, Z., & Hartmann, L. 2016, *ApJ*, 819, 134
- Baraffe, I., Chabrier, G., Barman, T. S., Allard, F., & Hauschildt, P. H. 2003, *A&A*, 402, 701
- Baraffe, I., Homeier, D., Allard, F., & Chabrier, G. 2015, *A&A*, 577, A42
- Beuzit, J.-L., Feldt, M., Dohlen, K., et al. 2008, in *SPIE Conf. Ser.*, ed. I. S. McLean & M. M. Casali, Vol. 7014, 701418
- Billler, B. A., Males, J., Rodrigues, T., et al. 2014, *ApJ*, 792, L22
- Boccaletti, A., Abe, L., Baudrand, J., et al. 2008, in *SPIE Conf. Ser.*, Vol. 7015, 70151B
- Bonnefoy, M., Lagrange, A.-M., Boccaletti, A., et al. 2011, *A&A*, 528, L15
- Brown, J. M., Blake, G. A., Qi, C., et al. 2009, *ApJ*, 704, 496
- Carmona, A., Pinte, C., Thi, W. F., et al. 2014, *A&A*, 567, A51
- Chiang, E. & Murray-Clay, R. 2007, *Nature Physics*, 3, 604
- Claudi, R. U., Turrato, M., Gratton, R. G., et al. 2008, in *SPIE Conf. Ser.*, Vol. 7014, 70143E
- Coulson, I. M. & Walther, D. M. 1995, *MNRAS*, 274, 977
- Crida, A., Morbidelli, A., & Masset, F. 2006, *Icarus*, 181, 587
- Currie, T., Cloutier, R., Brittain, S., et al. 2015, *ApJL*, 814, L27
- Cutri, R. M., Skrutskie, M. F., van Dyk, S., et al. 2003, *VizieR Online Data Catalog*, 2246, 0
- Dent, W. R. F., Greaves, J. S., & Coulson, I. M. 2005, *MNRAS*, 359, 663
- Dodson-Robinson, S. E. & Salyk, C. 2011, *ApJ*, 738, 131
- Dohlen, K., Langlois, M., Saisse, M., et al. 2008, in *SPIE Conf. Ser.*, Vol. 7014, 70143L
- Dong, R. & Fung, J. 2017, *ApJ*, 835, 38
- Dong, R., Zhu, Z., Rafikov, R. R., & Stone, J. M. 2015, *ApJL*, 809, L5
- Doucet, C., Pantin, E., Lagage, P. O., & Dullemond, C. P. 2006, *A&A*, 460, 117
- Dullemond, C. P. & Dominik, C. 2005, *A&A*, 434, 971
- Espaillat, C., Muzerolle, J., Najita, J., et al. 2014, *Protostars and Planets VI*, 497
- Fedele, D., van den Ancker, M. E., Acke, B., et al. 2008, *A&A*, 491, 809
- Fung, J. & Dong, R. 2015, *ApJL*, 815, L21
- Fung, J., Shi, J.-M., & Chiang, E. 2014, *ApJ*, 782, 88
- Fusco, T., Rousset, G., Sauvage, J.-F., et al. 2006, *Opt. Express*, 14, 7515
- Gaia Collaboration, Brown, A. G. A., Vallenari, A., et al. 2016, *A&A*, 595, A2
- Galicher, R. & Marois, C. 2011, in *Proc. AO4ELT2*, id.P25
- García Lopez, R., Natta, A., Testi, L., & Habart, E. 2006, *A&A*, 459, 837
- Garufi, A., Quanz, S. P., Avenhaus, H., et al. 2013, *A&A*, 560, A105
- Grady, C. A., Schneider, G., Sitko, M. L., et al. 2009, *ApJ*, 699, 1822
- Hollenbach, D., Johnstone, D., Lizano, S., & Shu, F. 1994, *ApJ*, 428, 654
- Hugot, E., Ferrari, M., El Hadi, K., et al. 2012, *A&A*, 538, A139
- Juhász, A., Benisty, M., Pohl, A., et al. 2015, *MNRAS*, 451, 1147
- Kanagawa, K. D., Muto, T., Tanaka, H., et al. 2016, *PASJ*, 68, 43
- Lafrenière, D., Marois, C., Doyon, R., Nadeau, D., & Artigau, É. 2007, *ApJ*, 660, 770
- Langlois, M., Vigan, A., Moutou, C., et al. 2013, in *Proceedings of the Third AO4ELT Conference*, ed. S. Esposito & L. Fini, 63
- Lin, D. N. C. & Papaloizou, J. C. B. 1993, in *Protostars and Planets III*, ed. E. H. Levy & J. I. Lunine, 749–835
- Lyo, A.-R., Ohashi, N., Qi, C., Wilner, D. J., & Su, Y.-N. 2011, *AJ*, 142, 151
- Maaskant, K. M., Honda, M., Waters, L. B. F. M., et al. 2013, *A&A*, 555, A64
- Maire, A.-L., Bonnefoy, M., Ginski, C., et al. 2016a, *A&A*, 587, A56
- Maire, A.-L., Langlois, M., Dohlen, K., et al. 2016b, in *Proc. SPIE*, Vol. 9908, Society of Photo-Optical Instrumentation Engineers (SPIE) Conference Series, 990834
- Malik, M., Meru, F., Mayer, L., & Meyer, M. 2015, *ApJ*, 802, 56
- Marley, M. S., Fortney, J. J., Hubickyj, O., Bodenheimer, P., & Lissauer, J. 2007, *ApJ*, 655, 541
- Marois, C., Correia, C., Galicher, R., et al. 2014, in *SPIE Conf. Ser.*, Vol. 9148, 91480U
- Marois, C., Lafrenière, D., Doyon, R., Macintosh, B., & Nadeau, D. 2006a, *ApJ*, 641, 556
- Marois, C., Zuckerman, B., Konopacky, Q., Macintosh, B., & Barman, T. 2010, *Nature*, 468, 1080
- Mawet, D., Milli, J., Wahhaj, Z., et al. 2014, *ApJ*, 792, 97
- Menu, J., van Boekel, R., Henning, T., et al. 2015, *A&A*, 581, A107
- Mesa, D., Gratton, R., Zurlo, A., et al. 2015, *A&A*, 576, A121
- Mesa, D., Vigan, A., D’Orazi, V., et al. 2016, *A&A*, 593, A119
- Milli, J., Vigan, A., Mouillet, D., et al. 2017, *A&A* [arXiv:1701.00750]
- Min, M., Rab, C., Woitke, P., Dominik, C., & Ménard, F. 2016, *A&A*, 585, A13
- Mordasini, C., Alibert, Y., Klahr, H., & Henning, T. 2012, *A&A*, 547, A111
- Müller, A., van den Ancker, M. E., Launhardt, R., et al. 2011, *A&A*, 530, A85
- Muto, T., Grady, C. A., Hashimoto, J., et al. 2012, *ApJ*, 748, L22
- Pavlov, A., Möller-Nilsson, O., Feldt, M., et al. 2008, in *SPIE Conf. Ser.*, Vol. 7019, 701939
- Pérez, L. M., Isella, A., Carpenter, J. M., & Chandler, C. J. 2014, *ApJ*, 783, L13
- Perrin, M. D., Duchene, G., Millar-Blanchaer, M., et al. 2015, *ApJ*, 799, 182
- Pinilla, P., Benisty, M., & Birnstiel, T. 2012, *A&A*, 545, A81
- Pinilla, P., van der Marel, N., Pérez, L. M., et al. 2015, *A&A*, 584, A16
- Pohl, A., Pinilla, P., Benisty, M., et al. 2015, *MNRAS*, 453, 1768
- Pontoppidan, K. M., Blake, G. A., van Dishoeck, E. F., et al. 2008, *ApJ*, 684, 1323
- Quanz, S. P., Amara, A., Meyer, M. R., et al. 2015, *ApJ*, 807, 64
- Quanz, S. P., Amara, A., Meyer, M. R., et al. 2013, *ApJL*, 766, L1
- Quanz, S. P., Birkmann, S. M., Apai, D., Wolf, S., & Henning, T. 2012, *A&A*, 538, A92
- Reggiani, M., Quanz, S. P., Meyer, M. R., et al. 2014, *ApJ*, 792, L23
- Robin, A. C., Reylé, C., Derrière, S., & Picaud, S. 2003, *A&A*, 409, 523
- Soummer, R. 2005, *ApJ*, 618, 161
- Soummer, R., Pueyo, L., & Larkin, J. 2012, *ApJL*, 755, L28
- Spiegel, D. S. & Burrows, A. 2012, *ApJ*, 745, 174
- Stolker, T., Dominik, C., Avenhaus, H., et al. 2016, *A&A*, 595, A113
- Strom, K. M., Strom, S. E., Edwards, S., Cabrit, S., & Skrutskie, M. F. 1989, *AJ*, 97, 1451
- van Boekel, R., Dullemond, C. P., & Dominik, C. 2005, *A&A*, 441, 563
- van der Marel, N., Cazzoletti, P., Pinilla, P., & Garufi, A. 2016a, *ApJ*, 832, 178
- van der Marel, N., van Dishoeck, E. F., Bruderer, S., et al. 2016b, *A&A*, 585, A58
- Vicente, S., Merín, B., Hartung, M., et al. 2011, *A&A*, 533, A135
- Vigan, A., Bonnefoy, M., Ginski, C., et al. 2016, *A&A*, 587, A55
- Vigan, A., Moutou, C., Langlois, M., et al. 2010, *MNRAS*, 407, 71
- Wahhaj, Z., Cieza, L. A., Mawet, D., et al. 2015, *A&A*, 581, A24
- Woitke, P., Min, M., Pinte, C., et al. 2016, *A&A*, 586, A103
- Zhu, Z., Dong, R., Stone, J. M., & Rafikov, R. R. 2015, *ApJ*, 813, 88

-
- ¹ Max-Planck-Institut für Astronomie, Königstuhl 17, D-69117 Heidelberg, Germany
e-mail: maire@mpia.de
 - ² Anton Pannekoek Institute for Astronomy, University of Amsterdam, Science Park 904, 1098 XH Amsterdam, The Netherlands
 - ³ INAF Catania Astrophysical Observatory, via S. Sofia 78, I-95123 Catania, Italy
 - ⁴ European Southern Observatory, Alonso de Cordova 3107, Casilla 19001 Vitacura, Santiago 19, Chile
 - ⁵ Institute for Astronomy, The University of Edinburgh, Royal Observatory, Blackford Hill View, Edinburgh, EH9 3HJ, UK
 - ⁶ National Astronomical Observatory of Japan, Subaru Telescope, Hilo, HI, USA
 - ⁷ Exoplanets and Stellar Astrophysics Laboratory, NASA Goddard Space Flight Center, Greenbelt, MD, USA
 - ⁸ LESIA, Observatoire de Paris, PSL Research University, CNRS, Université Paris Diderot, Sorbonne Paris Cité, UPMC Paris 6, Sorbonne Université, 5 place J. Janssen, F-92195 Meudon, France
 - ⁹ Univ. Grenoble Alpes, CNRS, IPAG, F-38000 Grenoble, France
 - ¹⁰ York Creek Observatory, Georgetown, Tasmania, Australia
 - ¹¹ Heidelberg University, Institute of Theoretical Astrophysics, Albert-Ueberle-Str. 2, 69120 Heidelberg, Germany
 - ¹² International Max Planck Research School for Astronomy and Cosmic Physics, Heidelberg, Germany
 - ¹³ CRAL, UMR 5574, CNRS/ENS-L/Université Lyon 1, 9 av. Ch. André, F-69561 Saint-Genis-Laval, France
 - ¹⁴ Aix Marseille Univ., CNRS, LAM, Laboratoire d’Astrophysique de Marseille, Marseille, France
 - ¹⁵ Department of Astronomy, University of Michigan, 1085 S. University Ave, Ann Arbor, MI 48109-1107, USA
 - ¹⁶ ETH Zurich, Institute for Astronomy, Wolfgang-Pauli-Strasse 27, 8093 Zurich, Switzerland
 - ¹⁷ Núcleo de Astronomía, Facultad de Ingeniería, Universidad Diego Portales, Av. Ejercito 441, Santiago, Chile
 - ¹⁸ Millennium Nucleus “Protoplanetary Disk”, Departamento de Astronomía, Universidad de Chile, Casilla 36-D, Santiago, Chile
 - ¹⁹ INAF–Osservatorio Astronomico di Padova, Vicolo dell’Osservatorio 5, I-35122 Padova, Italy
 - ²⁰ ONERA, The French Aerospace Lab BP72, 29 avenue de la Division Leclerc, 92322 Châtillon Cedex, France
 - ²¹ Leiden Observatory, Leiden University, P.O. Box 9513, 2300 RA Leiden, The Netherlands
 - ²² European Southern Observatory, Karl Schwarzschild St, 2, 85748 Garching, Germany
 - ²³ Geneva Observatory, University of Geneva, Chemin des Maillettes 51, 1290 Versoix, Switzerland

Appendix A: IFS individual images

Figure A.1 shows the IFS individual images in the *YJH* bands. We note that the disk does not exhibit morphological spectral variations, except for a global increase in contrast with the wavelength.

Appendix B: Photometric variability of the host star

As supporting observations for the SPHERE observations reported in this paper, we performed a photometric monitoring of the host star in order to analyze its photometric variability. In high-contrast observations, the photometric measurements are relative to the host star, so their accuracy is dependent on the stellar variability. SAO 206462 is known to show high photometric variability ($\sim 23\%$ at $1.7 \mu\text{m}$, Grady et al. 2009).

The star was observed from August 14 to 31, 2015 for a total of four nights at the York Creek Observatory ($41^{\circ}06'06.4''\text{S}$, $146^{\circ}50'33''\text{E}$, Georgetown, Tasmania) using a f/10 25 cm Takahashi Mewlon reflector, equipped with a QSI 683ws-8 camera, and *B*, *V*, and *R* standard Johnson-Cousins filters. The telescope has a field of view of $24.5' \times 18.5'$. The pixel scale is $0.44''/\text{pix}$. A total of 51 frames were collected in the *V* filter using an integration time of 20 s. Aperture photometry was used to extract the magnitudes of SAO 206462 and other stars in the field to be used as comparison stars. All reduction steps were performed using the tasks within IRAF⁸. The achieved photometric accuracy was $\sigma_V = 0.01 \text{ mag}$.

We could identify three stars whose light curves were very stable and therefore suitable as comparison stars. Their differential magnitudes during our observing run were found to be constant within our photometric precision. We performed the Lomb-Scargle periodogram analysis of differential *V* light curve. In Fig. B.1 we summarize the results for the *V*-band observations. On the basis of stellar radius $R = 1.4 R_{\odot}$ and projected rotational velocity $v \sin i = 82.5 \text{ km s}^{-1}$ (Müller et al. 2011), the expected rotation period must be shorter than about 1 day. We searched for photometric periodicities in the 0.1–1.0-day interval. In the periodogram we found a number of significant power peaks that are related to the observation window function. However, after filtering the major power peak, the pre-whitened time series showed a significant periodicity at $P = 0.137 \text{ d}$ that we assume to be the stellar rotation period. In a previous analysis, Müller et al. (2011) measured a rotation period $P = 0.160 \text{ d}$ using a generalized Lomb-Scargle analysis of a series of FEROS radial velocity measurements covering a time period of 151 days. However, they also found in their periodogram two other peaks of comparable power at $P = 0.138$ and $P = 0.191 \text{ d}$, the first peak being in good agreement with our estimate.

⁸ IRAF is distributed by the National Optical Astronomy Observatory, which is operated by the Association of the Universities for Research in Astronomy, Inc. (AURA), under cooperative agreement with the National Science Foundation.

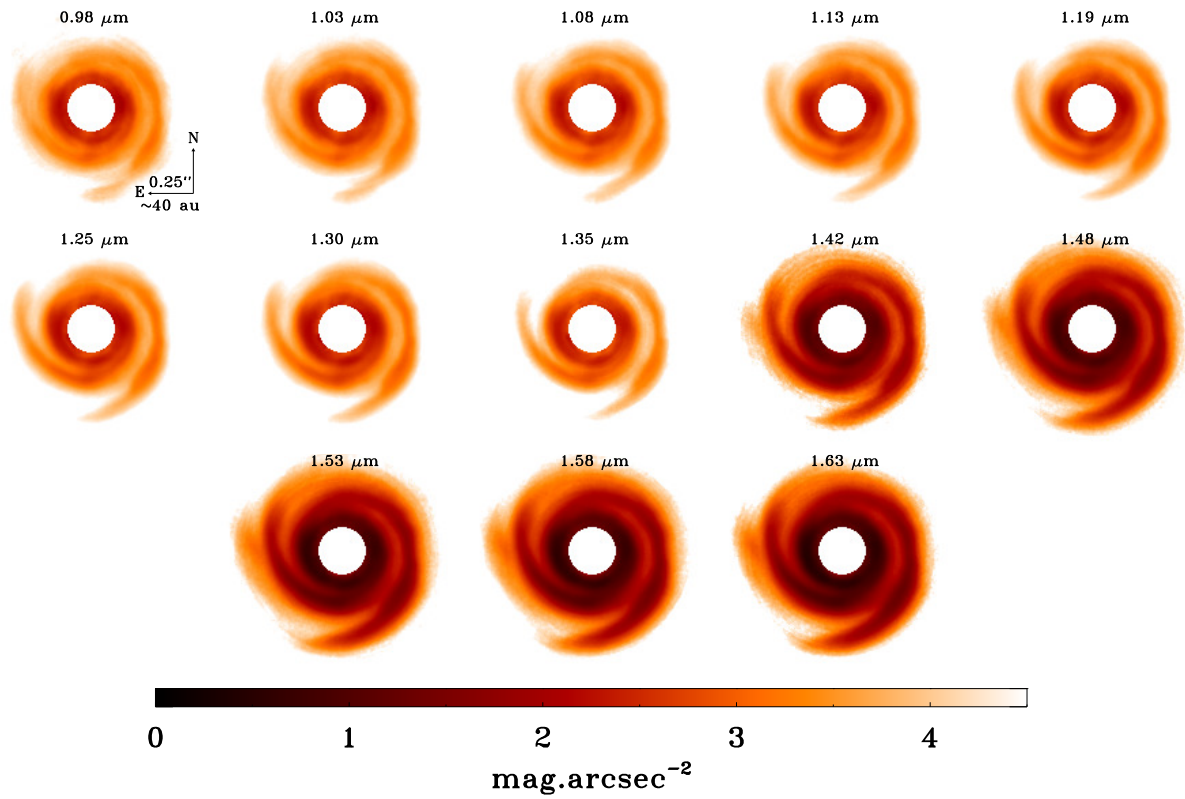


Fig. A.1. Individual RDI IFS images of SAO 206462 covering the 0.95–1.65 μm spectral range using a spectral binning of 3 ($R \sim 9\text{--}15$). Each image is normalized to the maximum of the unsaturated non-coronagraphic PSF in each band. The center of the images is masked out numerically to remove the star.

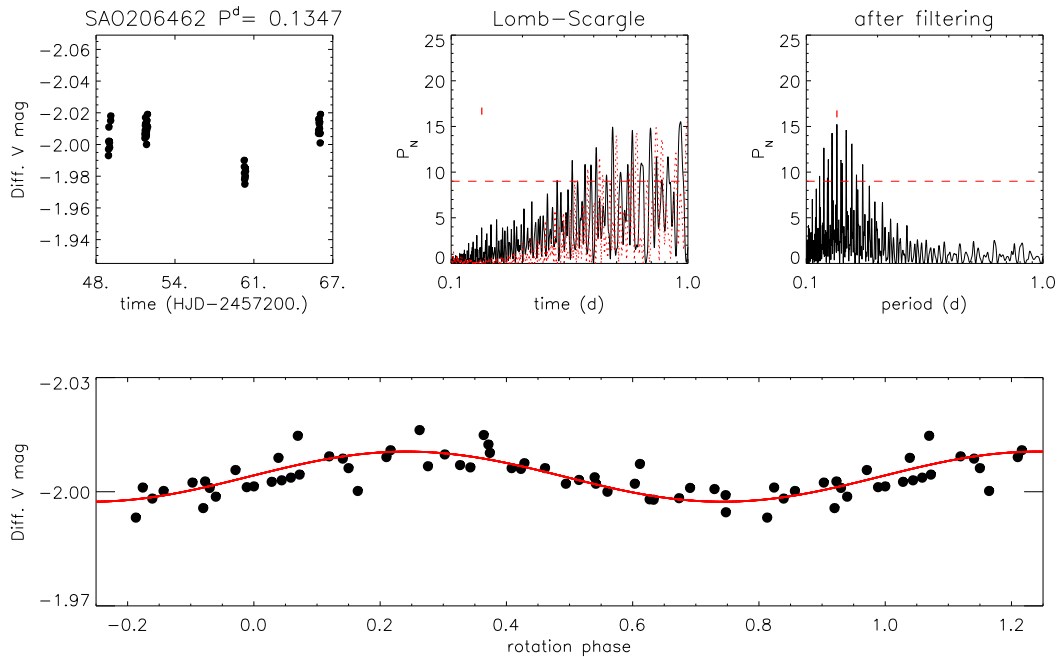


Fig. B.1. Photometric analysis of SAO206462. *Top row from left to right:* V-band differential magnitudes versus Heliocentric Julian Day, Lomb-Scargle periodogram, and the periodogram after filtering. For the Lomb-Scargle periodogram, we show the spectral window function (red dotted line), the power level corresponding to FAP = 1% (horizontal dashed line), and the peak corresponding to the rotation period (red arrow). *Bottom panel:* Light curve phased with the rotation period. The solid line represents the sinusoidal fit.