



**HAL**  
open science

## Does pearling process concentrate $\beta$ -Glucans in barley grain ?

Alexis Fernandez, Paul Malumba, Olivier Roiseux, Gilles Olive, Christophe Blecker

### ► To cite this version:

Alexis Fernandez, Paul Malumba, Olivier Roiseux, Gilles Olive, Christophe Blecker. Does pearling process concentrate  $\beta$ -Glucans in barley grain?. 23e National Symposium on Applied Biological Sciences, Feb 2018, Bruxelles, Belgium. pp.P37, 2018. hal-01705485

**HAL Id: hal-01705485**

**<https://hal.science/hal-01705485>**

Submitted on 9 Feb 2018

**HAL** is a multi-disciplinary open access archive for the deposit and dissemination of scientific research documents, whether they are published or not. The documents may come from teaching and research institutions in France or abroad, or from public or private research centers.

L'archive ouverte pluridisciplinaire **HAL**, est destinée au dépôt et à la diffusion de documents scientifiques de niveau recherche, publiés ou non, émanant des établissements d'enseignement et de recherche français ou étrangers, des laboratoires publics ou privés.

# Does pearling process concentrate $\beta$ -Glucans in barley grain?

Alexis FERNANDEZ<sup>1</sup>, Paul MALUMBA<sup>2</sup>, Olivier ROISEUX<sup>3</sup>, Gilles OLIVE<sup>1,4</sup>, Christophe BLECKER<sup>4</sup>

1. Ecole Industrielle et Commerciale de la Ville de Namur, 5000 Namur, Belgium; 2. Care FoodsLife – Terra Teaching and Research Center, GxABT-Ulège, Belgium  
3. Wal.Agri SA, Rue de la Basse-Sambre 16, 5140 Sombreffe, Belgium; 4. Laboratoire de science des aliments et formulation, GxABT-Ulège, Belgium

Corresponding author : alexisfernandez2803@gmail.com

## INTRODUCTION

Dietary fibres are increasingly used in the Western diet due to for example their lower carbohydrate intake or their hypocholesterolemic action and preventive effects against colon's infections and diseases.

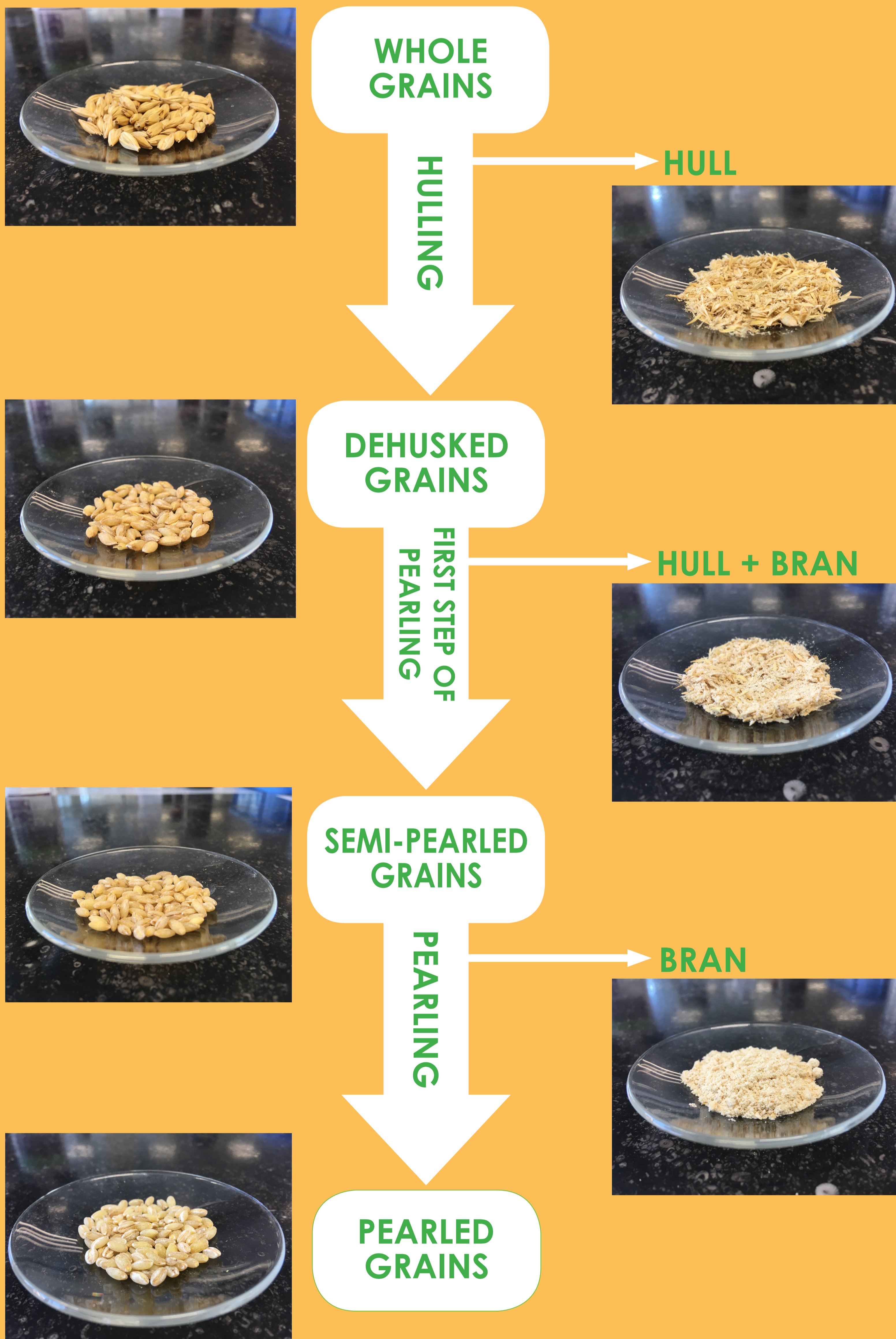
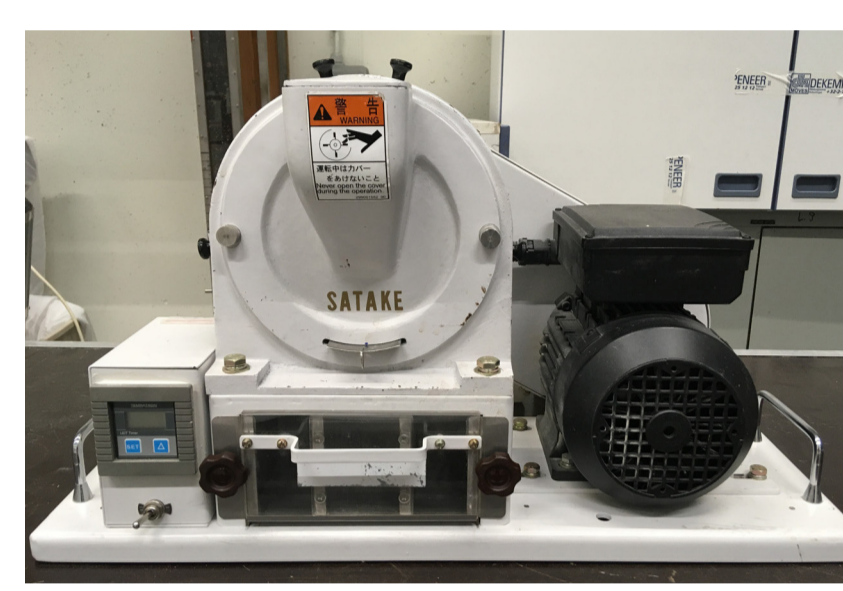
$\beta$ -glucans, a soluble dietary fibre found in different cereals (mainly in oat and barley), consist of glucose units linked by  $\beta$  1-3 bonds and  $\beta$  1-4. In contrary to starch, linked by a 1-4 and a 1-6 bonds,  $\beta$ -glucans are less degraded during gastric and ileal phases of digestion, inducing less increase of glycaemic index during the post-prandial phase of digestion. As they are not hydrolysed by digestive enzymes,  $\beta$ -glucans are fermentable substrates for the microbiome implanted in the colon of monogastrics and contribute to the production of short-chain fatty acids, useful for the regeneration of cells lining the walls of the colon. The aim of this study was to develop the barley grain fractionation process, in order to isolate fractions, with higher amounts in  $\beta$ -glucans, by isolation of grain subcomponents where these polysaccharides are preferentially stored; this fraction willing to be used as a health ingredient according to the EFSA advice that allow to mention an hypocholesterol effect for barley's beta-glucans.

## EXPERIMENTATION

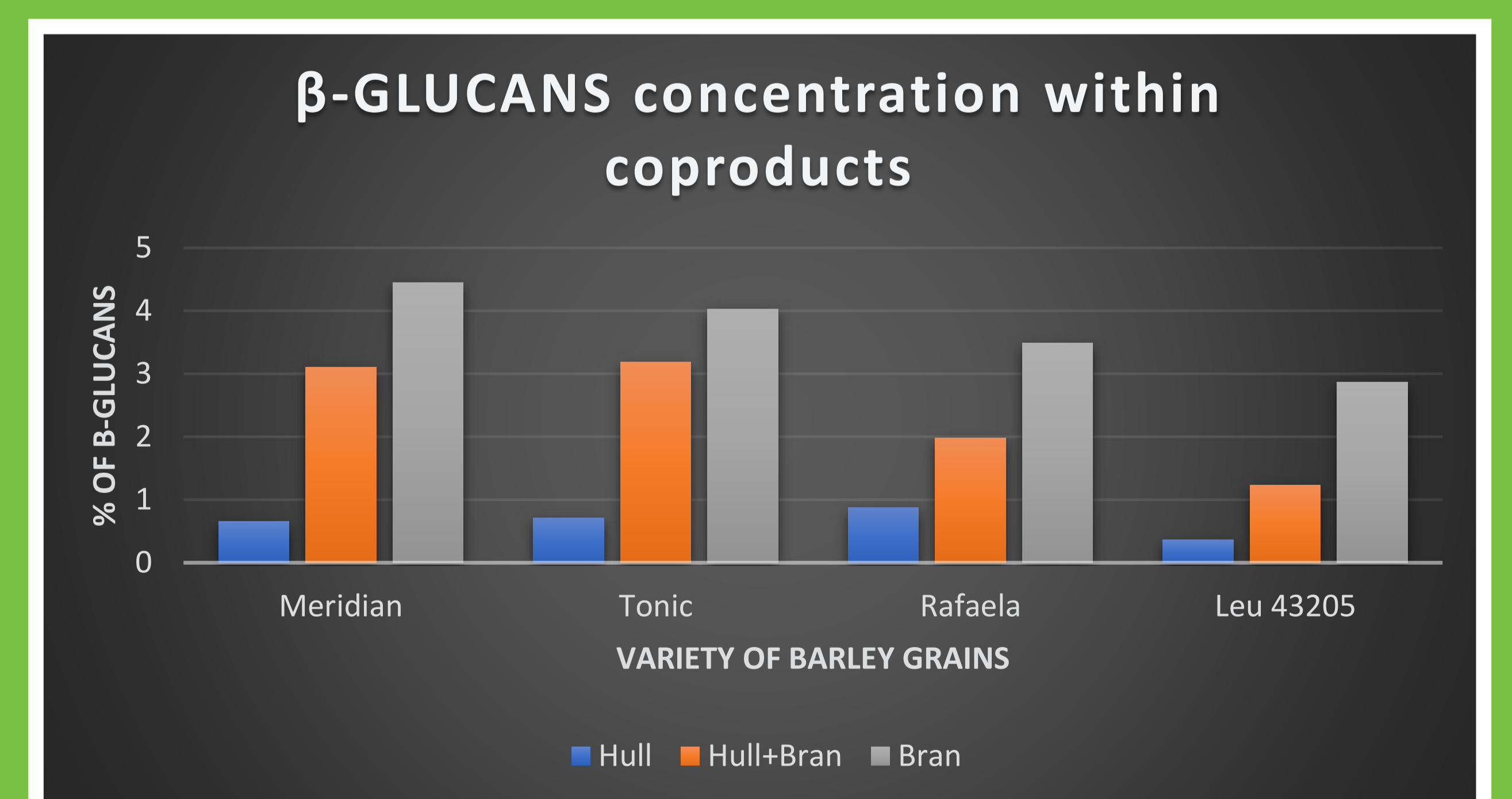
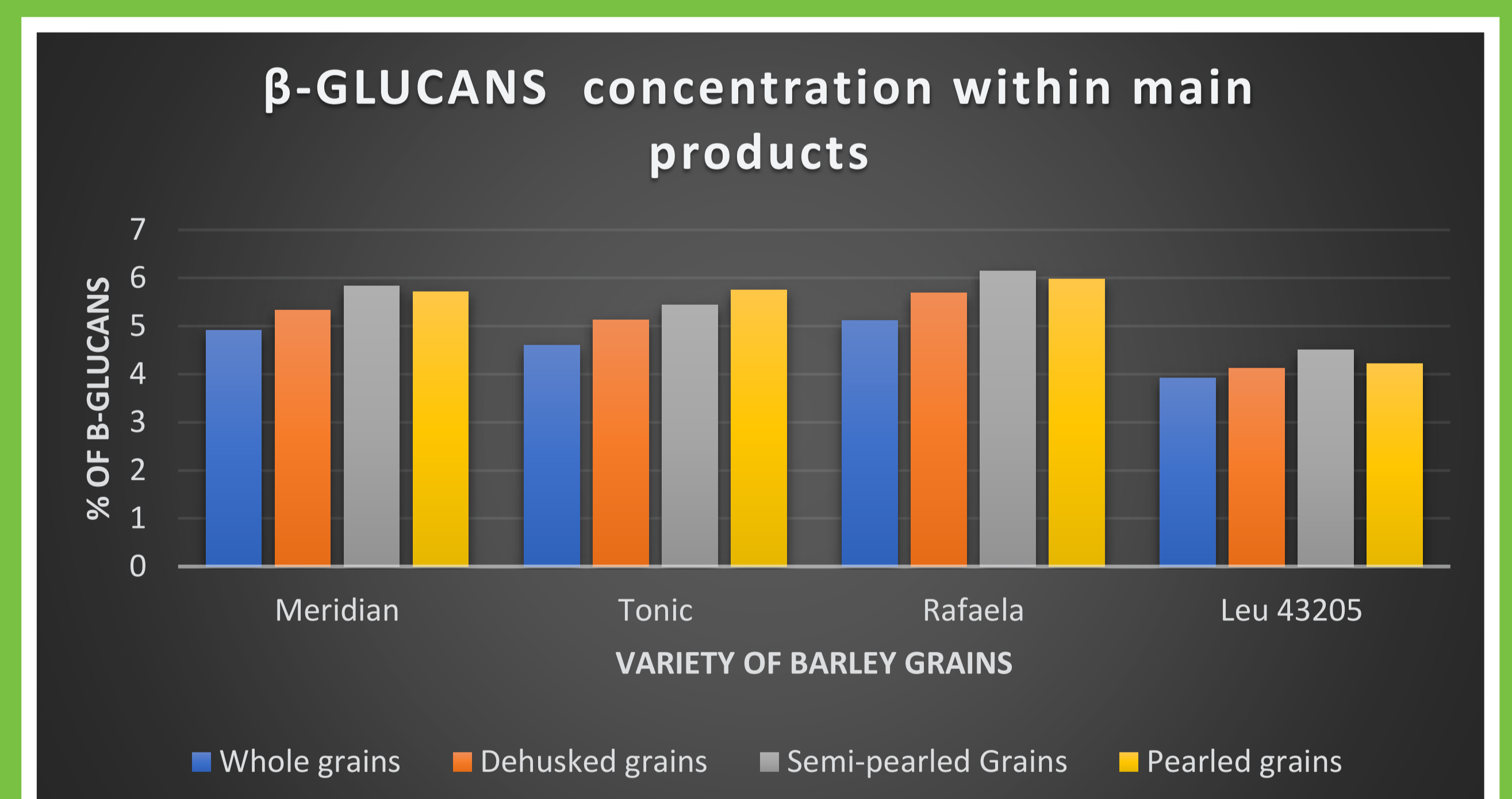
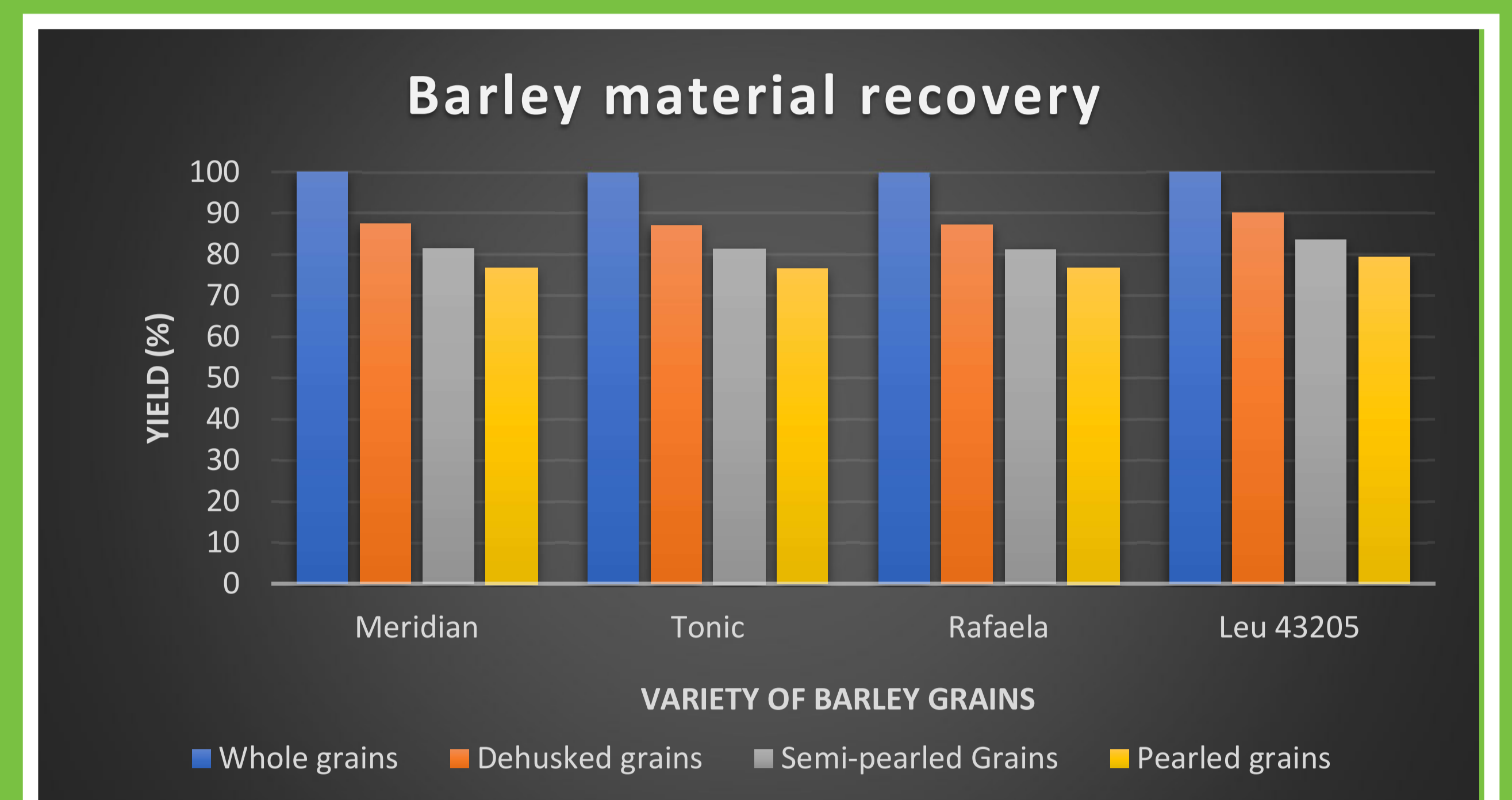
### MATERIAL :

SATAKE Huller TM05C

MEGAZYME  $\beta$ -glucans assay Kits



## RESULTS



## CONCLUSION

This experimental process allows to demonstrate that  $\beta$ -glucans are heterogeneously distributed through the different tissues of the barley grain. Indeed, it was found that the lowest concentration in  $\beta$ -glucans is present first in the husk and then in the bran. In view of this results, we can deduce that pearled grains have an higher level in  $\beta$ -glucans than the whole barley grains. Pearled barley could thus be part of dietary meal to fight too high rate of bad cholesterol in blood.