

## Supplementary Data

Table A : Distribution of Infliximab's different forms in Size Exclusion Chromatography (% of total AUC  $\pm$  SD, n=3)

25°C						
Infliximab 0.4 mg/mL in NaCl bags						
	Infliximab Monomer		Infliximab Dimer		Infliximab oligomer	
D0	99.29%	$\pm$ 0.03%	0.71%	$\pm$ 0.03%	<i>Undetectable</i>	
D7	99.54%	$\pm$ 0.06%	0.46%	$\pm$ 0.06%	<i>Undetectable</i>	
D14	99.46%	$\pm$ 0.02%	0.50%	$\pm$ 0.02%	0.04%	$\pm$ 0.01%
D30	99.50%	$\pm$ 0.02%	0.45%	$\pm$ 0.02%	0.05%	$\pm$ 0.01%
Infliximab 2 mg/mL in NaCl bags						
	Infliximab Monomer		Infliximab Dimer		Infliximab oligomer	
D0	99.15%	$\pm$ 0.00%	0.84%	$\pm$ 0.00%	0.01%	$\pm$ 0.00%
D7	99.30%	$\pm$ 0.04%	0.67%	$\pm$ 0.05%	0.03%	$\pm$ 0.01%
D14	99.31%	$\pm$ 0.01%	0.65%	$\pm$ 0.01%	0.04%	$\pm$ 0.00%
D30	99.31%	$\pm$ 0.02%	0.64%	$\pm$ 0.01%	0.05%	$\pm$ 0.00%
D90	99.20%	$\pm$ 0.05%	0.67%	$\pm$ 0.05%	0.13%	$\pm$ 0.00%
Infliximab 10 mg/mL in original glass vials						
	Infliximab Monomer		Infliximab Dimer		Infliximab oligomer	
D0	99.19%	$\pm$ 0.02%	0.81%	$\pm$ 0.02%	<i>Undetectable</i>	
D7	99.18%	$\pm$ 0.02%	0.82%	$\pm$ 0.02%	<i>Undetectable</i>	
D14	99.17%	$\pm$ 0.10%	0.79%	$\pm$ 0.10%	0.05%	$\pm$ 0.02%
D30	98.92%	$\pm$ 0.03%	0.98%	$\pm$ 0.03%	0.10%	$\pm$ 0.00%
5°C						
Infliximab 0.4 mg/mL in NaCl bags						
	Infliximab Monomer		Infliximab Dimer		Infliximab oligomer	
D0	99.29%	$\pm$ 0.03%	0.71%	$\pm$ 0.03%	<i>Undetectable</i>	
D7	99.55%	$\pm$ 0.03%	0.45%	$\pm$ 0.03%	<i>Undetectable</i>	
D14	99.31%	$\pm$ 0.05%	0.69%	$\pm$ 0.05%	<i>Undetectable</i>	
D30	99.53%	$\pm$ 0.14%	0.47%	$\pm$ 0.14%	<i>Undetectable</i>	
D90	99.55%	$\pm$ 0.00%	0.45%	$\pm$ 0.00%	<i>Undetectable</i>	
Infliximab 2 mg/mL in NaCl bags						
	Infliximab Monomer		Infliximab Dimer		Infliximab oligomer	
D0	99.15%	$\pm$ 0.00%	0.84%	$\pm$ 0.00%	0.01%	$\pm$ 0.00%
D7	99.16%	$\pm$ 0.00%	0.83%	$\pm$ 0.01%	0.02%	$\pm$ 0.01%
D14	99.20%	$\pm$ 0.01%	0.79%	$\pm$ 0.01%	0.01%	$\pm$ 0.01%
D30	99.24%	$\pm$ 0.00%	0.75%	$\pm$ 0.00%	0.01%	$\pm$ 0.00%
D90	99.31%	$\pm$ 0.03%	0.68%	$\pm$ 0.04%	0.01%	$\pm$ 0.00%
Infliximab 10 mg/mL in original glass vials						
	Infliximab Monomer		Infliximab Dimer		Infliximab oligomer	
D0	99.19%	$\pm$ 0.02%	0.81%	$\pm$ 0.02%	<i>Undetectable</i>	
D7	99.23%	$\pm$ 0.03%	0.77%	$\pm$ 0.02%	<i>Undetectable</i>	
D14	99.25%	$\pm$ 0.07%	0.75%	$\pm$ 0.10%	<i>Undetectable</i>	
D30	99.25%	$\pm$ 0.06%	0.75%	$\pm$ 0.03%	<i>Undetectable</i>	
Freeze-thawing						
Infliximab 0.4 mg/mL in NaCl bags						
	Infliximab Monomer		Infliximab Dimer		Infliximab oligomer	
D0	99.33%	$\pm$ 0.02%	0.64%	$\pm$ 0.01%	<i>Undetectable</i>	
60 hours	99.29%	$\pm$ 0.01%	0.69%	$\pm$ 0.01%	0.02%	$\pm$ 0.01%
Infliximab 2 mg/mL in NaCl bags						
	Infliximab Monomer		Infliximab Dimer		Infliximab oligomer	
D0	99.17%	$\pm$ 0.01%	0.81%	$\pm$ 0.00%	0.01%	$\pm$ 0.00%
60 hours	99.15%	$\pm$ 0.00%	0.84%	$\pm$ 0.00%	0.01%	$\pm$ 0.00%
Infliximab 10 mg/mL in original glass vials						
	Infliximab Monomer		Infliximab Dimer		Infliximab oligomer	
D0	99.25%	$\pm$ 0.07%	0.75%	$\pm$ 0.07%	<i>Undetectable</i>	
60 hours	99.46%	$\pm$ 0.02%	0.51%	$\pm$ 0.03%	0.03%	$\pm$ 0.02%



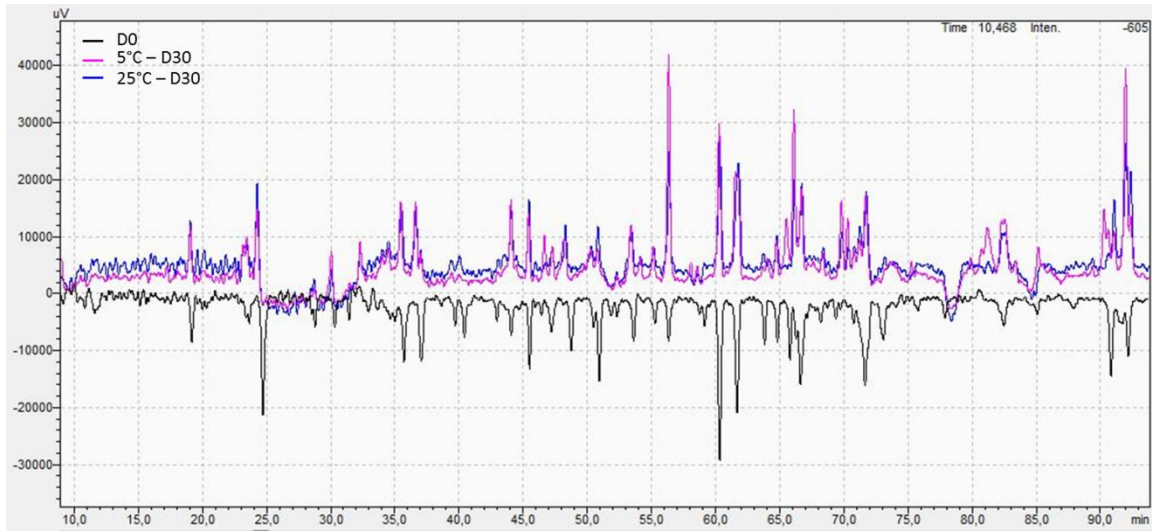


Figure A: peptide mapping chromatogram of 10 mg/mL infliximab solutions at D0 (black) and at D30 for both temperature conditions (5°C in pink, 25°C in blue).

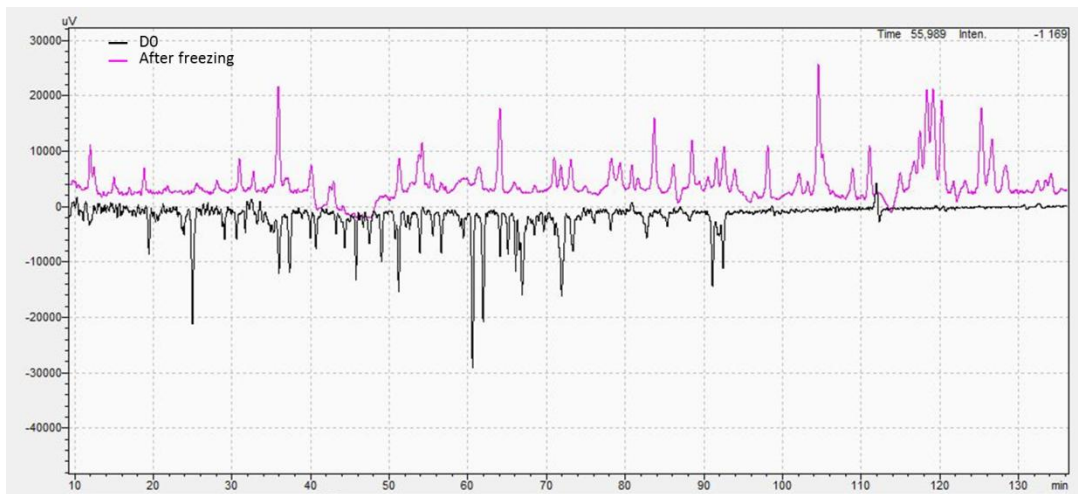


Figure B: peptide mapping chromatogram of 10 mg/mL infliximab solutions at D0 (black) and after a freeze-thawing cycle (pink)