



**HAL**  
open science

## The national alert-response strategy against cholera in Haiti: a four-year assessment of its implementation

Stanislas Rebaudet, Gregory Bult, Jean Gaudart, Edwige Michel, Pierre Gazin, Claudia Evers, Samuel Beaulieu, Aaron Aruna Abedi, Lindsay Osei, Robert Barraï, et al.

### ► To cite this version:

Stanislas Rebaudet, Gregory Bult, Jean Gaudart, Edwige Michel, Pierre Gazin, et al.. The national alert-response strategy against cholera in Haiti: a four-year assessment of its implementation. 2018. hal-01702685

**HAL Id: hal-01702685**

**<https://hal.science/hal-01702685>**

Preprint submitted on 7 Feb 2018

**HAL** is a multi-disciplinary open access archive for the deposit and dissemination of scientific research documents, whether they are published or not. The documents may come from teaching and research institutions in France or abroad, or from public or private research centers.

L'archive ouverte pluridisciplinaire **HAL**, est destinée au dépôt et à la diffusion de documents scientifiques de niveau recherche, publiés ou non, émanant des établissements d'enseignement et de recherche français ou étrangers, des laboratoires publics ou privés.



Distributed under a Creative Commons Attribution - NonCommercial - NoDerivatives 4.0 International License

## The national alert-response strategy against cholera in Haiti: a four-year assessment of its implementation

Stanislas Rebaudet<sup>1,2\*</sup>, Gregory Bulit<sup>3</sup>, Jean Gaudart<sup>4,1</sup>, Edwige Michel<sup>5</sup>, Pierre Gazin<sup>3,6</sup>, Claudia Evers<sup>3</sup>, Samuel Beaulieu<sup>3</sup>, Aaron Aruna Abedi<sup>3,7</sup>, Lindsay Osei<sup>1,3</sup>, Robert Barraï<sup>5</sup>, Katilla Pierre<sup>5</sup>, Sandra Moore<sup>8</sup>, Jacques Boncy<sup>9</sup>, Paul Adrien<sup>5</sup>, Edouard Beigbeder<sup>3</sup>, Florence Duperval Guillaume<sup>10</sup>, Renaud Piarroux<sup>1,11</sup>

<sup>1</sup> Assistance Publique – Hôpitaux de Marseille (AP-HM), Marseille, France

<sup>2</sup> Hôpital Européen Marseille, Marseille, France

<sup>3</sup> United Nations Children's Fund, Haiti

<sup>4</sup> Aix Marseille Univ, IRD, INSERM, SESSTIM, Marseille, France

<sup>5</sup> Ministry of Public Health and Population, Directorate of Epidemiology Laboratory and Research, Haiti

<sup>6</sup> Institut de Recherche pour le Développement (IRD), Marseille, France

<sup>7</sup> Ministry of Health, Kinshasa, Democratic Republic of the Congo

<sup>8</sup> Aix Marseille Univ, Marseille, France

<sup>9</sup> Ministry of Public Health and Population, National Laboratory of Public Health, Haiti

<sup>10</sup> Ministry of Public Health and Population, former Minister, Haiti

<sup>11</sup> Sorbonne Université, INSERM, Institut Pierre-Louis d'Epidémiologie et de Santé Publique, AP-HP, Hôpital Pitié-Salpêtrière, F-75013, Paris, France

\* Corresponding author: [stanreb@gmail.com](mailto:stanreb@gmail.com)

### Abstract

**Background** – A massive cholera epidemic struck Haiti on October 2010. As part of the national cholera elimination plan, the Haitian government, UNICEF and other international partners launched a nationwide alert-response strategy from July 2013. This strategy established a coordinated methodology to rapidly target cholera-affected communities with WaSH (water sanitation and hygiene) response interventions conducted by field mobile teams. An innovative *red-orange-green* alert system was established, based on routine surveillance data, to weekly monitor the epidemic. **Methodology/Principal findings** – We used cholera consolidated surveillance databases, alert records and details of 31,306 response interventions notified by WaSH mobile teams to describe and assess the implementation of this approach between July 2013 and June 2017. Response to *red* and *orange* alerts was heterogeneous across the country, but significantly improved throughout the study period so that 75% of *red* and *orange* alerts were responded within the same epidemiological week during the 1<sup>st</sup> semester of 2017. Numbers of persons educated about cholera, houses decontaminated by chlorine spraying, households which received water chlorination tablets and water sources that were chlorinated during the same week as cholera alerts significantly increased. Alerts appeared to be an interesting and simple indicator to monitor the dynamic of the epidemic and assess the implementation of response activities. **Conclusions/Significance** – The implementation of a nationwide alert-response strategy against cholera in Haiti was feasible albeit with certain obstacles. Its cost was less than USD 8 million per year. Continuing this strategy seems essential to eventually defeat cholera in Haiti while ambitious long-term water and sanitation projects are conducted in vulnerable areas. It constitutes a core element of the current national plan for cholera elimination of the Haitian Government.

## Introduction

On October 2010, cholera was inadvertently introduced in Haiti [1], the poorest country of the Western Hemisphere [2]. It then experienced the largest national-level epidemic of the past few decades with 816,066 suspected cases and 9,748 suspected deaths recorded on December 30, 2017 by the Haitian Ministry of Public Health and Population (MSPP, acronyms summarized in Supplementary Table S1) [3]. Following international recommendations [4], a cholera surveillance and early warning system was established while Haitian authorities and services, together with numerous international and nongovernmental organizations (NGOs), struggled to mitigate the death toll and case incidence by supporting cholera treatment institutions and providing efforts to provide safe water, and to improve sanitation and hygiene practices (WaSH) in affected communities [5–8]. Cholera incidence gradually receded in 2011–2012, with alternating troughs and peaks influenced by seasonal rainfall [9]. Although Haiti then remained the most cholera-affected country worldwide [10], emergency funds for cholera dried up and most organizations eventually interrupted or drastically reduced their activities in 2012 [7,11]. The few remaining programs often lacked the precise epidemiological data necessary to target their efforts to the appropriate areas [11]. On February 2013, the Haitian government, Pan American Health Organization (PAHO), United Nations Children's Fund (UNICEF) and the Centers for Disease Control and Prevention (CDC) launched an ambitious National Plan for the Elimination of Cholera in Haiti 2013–2022 [12]. Over USD 1.5 billion of the total USD 2.2 billion was designated to invest in Haitian water and sanitation infrastructures, while only 68% of households drank from improved water sources, 26% had access to improved sanitation facilities and 34% had water and soap available for hand washing [13]. Meanwhile, two pilot oral cholera vaccination campaigns vaccinated approximately 100,000 people in both rural and urban settings [14,15], and two additional campaigns were planned in 2013 [16].

The elimination plan also intended to improve surveillance activities and ensure adequate response to detected outbreaks [12]. In order to interrupt cholera local outbreaks at an early stage, UNICEF thus backed the MSPP and the Haitian National Directorate for Water and Sanitation (DINEPA) to launch a cholera alert-response strategy in July 2013. This program aimed to rapidly detect cholera local outbreaks and send response teams to affected communities in order to identify additional cases, to educate on risk factors, prevention and management methods, to distribute soap and water chlorination products, and to protect local water sources by establishing water chlorination points. At central level, the epidemic was monitored using a simple and original cholera alert system that classified each commune in *red*, *orange* or *green* on a weekly basis, according to standardized criteria.

Based on identified risk factors, and on the growing evidence of WaSH efficiency against cholera [17–20] or against diarrhea in developing countries or humanitarian crises [21–24], promoting hygiene and improving access to safe drinking water have for long been recommended to control cholera transmission [25,26,4,27]. Besides, case-area targeted interventions have been frequently conducted against cholera epidemics, and are supported by the observed increase of cholera risk for neighbors living within a few dozen meters of cases during days following their presentation [28,29]. However, feedback from the field has been scarce and scattered, reported activities have usually been implemented at a local level, during short time periods, and described with few details [30–32,26,33–38,7,8,39–43].

To our knowledge, we thus propose in the present study the first thorough and quantified description of a multiyear nationwide coordinated strategy aiming to mitigate cholera transmission at the community level through rapid and targeted WaSH response interventions. Implementation of the National alert-response strategy against cholera in Haiti was assessed between July 2013 (27th epidemiological week, 2013w27) and June 2017 (2017w26). Evaluation of the efficiency and impact of this strategy is out of this paper's scope.

## Methods

### Study site

The Republic of Haiti occupies the mountainous western third of the island of Hispaniola, in the Greater Antilles. The country spans over 27,000 km<sup>2</sup>, and the estimated population in 2015 was approximately 10.9 million, 52% of whom lived in urban areas [44]. Haiti is administratively composed of 10 departments and 140 communes, which range in surface area from 59 to 645 km<sup>2</sup> and host populations between less than 6,000 and over 987,000 inhabitants [44]. Economic collapse, demographic explosion, political instability and natural disasters have contributed to generate deep structural vulnerabilities in WaSH, health care, education, agriculture, environment, trade, transportation and governance sectors that may favor cholera transmission [45].

### The cholera surveillance system in Haiti

Since October 2010, cholera treatment institutions (between 136 and 262 cholera treatment centers [CTCs], units [CTUs], or acute diarrhea treatment centers [CTDAs] during the study period) routinely record and notify cholera-associated morbidity and mortality data. According to the WHO standard definition [4], a probable cholera case is defined as a patient aged 5 years or older who develops acute watery diarrhea, with or without vomiting. In Haiti, suspected cholera cases aged <5 years old with similar symptoms are also separately recorded and included in the global cholera toll. Daily seen and hospitalized suspected cases as well as daily institutional and community suspected deaths are anonymously transmitted to one of the ten department health directorates using formatted SMSs (Short Message Service) or phone calls (Supplementary Figure S1). Department directorates compile and validate this data using a Microsoft Excel spreadsheet, which is sent to the national Directorate for epidemiology laboratory and research (DELR), normally on a daily basis, but with frequent delays. The DELR validates the departmental data and compiles them into a national Microsoft Excel spreadsheet at a daily and communal scale, before performing analyses. Recorded communes refer to the treatment place of cholera patients, not to their residence. Community cases are not recorded.

Since 2010, routine bacteriological confirmation of suspected cholera cases is performed at the National Laboratory of Public Health (LNSP) in Port-au-Prince Metropolitan Area, using standard sampling, culture and phenotyping methods [46]. Since July 2017, a private lab run by the NGO Zanmi Lasante and located in Saint-Marc, Artibonite, notifies stool culture results to LNSP. By June 2017, a total of 13,625 stool specimens, mostly sampled using rectal swabs with Carry-Blair transport medium, had been included in the national microbiological surveillance system of cholera. Sampling is not homogeneous across the country and about 1/3 of specimens actually have originated from a sentinel surveillance network of four hospitals in three departments [47]. The remainder has been sampled in other CTCs/CTUs/CTDAs across the country by the staff of department health directorates as well as medical international or non-governmental organizations. All partners have been committed to transport specimens back to the LNSP in Port-au-Prince.

Between 2013 and 2015, the MSPP experimented with the nationwide use of rapid diagnostic tests (Crystal VC<sup>TM</sup> RDT, Span Diagnostics Ltd., India) in cholera treatment institutions. Training proved challenging, and RDT results were barely taken into account for routine surveillance, alert identification and response interventions as initially planned.

### The nationwide response strategy to cholera suspect cases

The National alert-response strategy against cholera in Haiti was launched on July 2013. It planned to improve: (a) the coordination of activities implemented by national, international and nongovernmental partners involved in cholera control; (b) the epidemiologic surveillance of cholera in every commune, and the monitoring of outbreaks via an alert detection system at the central level;

(c) the rapidity, exhaustiveness, targeting and relevance of field responses to cholera alerts; and, (d) cholera prevention in the most vulnerable areas using mass education sessions and rehabilitation or installation of water adduction infrastructures. For this, UNICEF contracted at least one WaSH international or nongovernmental organization for each of the 10 departments (Supplementary Table S1), which hired rapid response mobile teams composed of local Haitian staff. These WaSH teams were requested to address every cholera suspected case or death by an intervention in the neighboring community within 48 hours. In case of several concomitant outbreaks, they were asked to target most affected areas in priority. The core methodology of their response interventions, established with the Ministry of Health and its partners [48], involved: (i) verification of surveillance data in register books of treatment institutions and the identification of affected localities and neighborhoods; (ii) field investigations in affected communities to estimate the extent of cholera transmission, understand triggering/aggravating factors, and to identify contacts and suspected cases with the help of community leaders and community officers; (iii) visits to affected families and their neighbors (minimum 5 households depending on the local geography), who were proposed house decontamination by chlorine spraying, although efficacy and impact of this decontamination method has never been established [27] and is likely limited for a few hours; (iv) on-site organization of education sessions about cholera transmission modes, prevention and initial care methods; (iv) distribution of 1 cholera kit per household (composed of 5 soaps, 5 sachets of oral rehydration salts (ORS), and about 115 chlorine tablets – 80 Aquatabs<sup>TM</sup> 33mg in urban or 150 in rural areas); (v) set up of manual bucket chlorination at drinking water sources during 1 or more weeks when possible, by hiring and instructing local volunteers; (vi) repair and extra-chlorination of water adduction systems when necessary and possible. Activities implemented during response interventions to cholera cases were prospectively transmitted by WaSH mobile teams to UNICEF, using standardized online Google spreadsheets. A few other WaSH organizations implementing field response to cholera cases funded by other agencies decided to join the strategy and also reported their activities to UNICEF (Supplementary Table S1).

To bolster institutional response capacities, UNICEF and the World Bank also provided additional material, funds and human resources to DINEPA and to MSPP which created its own departmental response teams (EMIRAs, *Rapid intervention mobile teams*) on March 2014, with WaSH and medical personnel (Supplementary Table S1). Besides activities listed above, their terms of reference included: (vii) primary care of cholera cases found in the community; (viii) chemoprophylaxis of contacts living in the same house as cholera cases with one dose of doxycycline 300 mg for non-pregnant adults only [4,49,50]; (ix) nursing support to cholera treatment institutions when necessary. ECHO (European Commission Humanitarian Office) and PAHO (Pan American Health Organization) also contracted medical NGOs (Supplementary Table S1), with similar terms of reference as EMIRAs'. Reporting of EMIRAs' and medical mobile teams' activities could not be systematized as for WaSH teams contracted by UNICEF.

The medical and WaSH governmental and nongovernmental actors of each department were requested to organize at least monthly coordination meetings and to share cholera epidemiological data and rumors on a daily basis (Supplementary Figure S1). Field interventions integrating WaSH/medical and governmental/nongovernmental staff were strongly encouraged. Mobile teams were asked to repeat response interventions in the community until every suspected cholera case had been addressed. From 2017, they were also requested to perform post distribution monitoring two weeks later. An illustration of these response interventions can be seen on this short online video (<https://www.youtube.com/watch?v=KOYRX4Fmabo>, accessed 26 January 2018).

### The cholera alert system

To better monitor the epidemic and check that field actors targeted probable cholera transmission foci, epidemiologists and WaSH specialists from the DELR, Assistance Publique – Hôpitaux de Marseille (AP-HM) and UNICEF established a simple alert system based on cholera

surveillance data at the communal scale in July 2013. Three stratified levels of alert – *red*, *orange* and *green* alert – were defined based on criteria including the number of cholera suspected cases and associated deaths ( $\geq 5$  years of age only) during the past seven days (Table 1). This approach was consensually and officially validated on August 2013 during a national Cholera Alert and Response workshop with Haitian authorities and international partners. Filling routinely compiled surveillance data in a Microsoft Excel programmed spreadsheet, DELR staff prospectively computed weekly alerts. But for organizational reasons, they actually did not include all planned criteria (Table 1), such as precise location of cholera cases at a sub-communal scale (criteria #3), RDT results (#4), stool cholera cultures (#5), rumors of cholera outbreak (#9). DELR then mapped identified alerts using Philcarto software [51], and summarized alert information in cholera bulletins, which were diffused to partners via epidemiological situation rooms, emails or through the MSPP website, usually on a weekly basis. An example of cholera weekly bulletin can be seen online (<https://mspp.gouv.ht/site/downloads/Profil%20statistique%20Cholera%204eme%20SE%202016%20.pdf>, accessed 26 January 2018).

**Table 1 – Criteria for cholera alerts at the communal level according to the DELR\***

Red alert		
#1 <sup>SE</sup>		$\geq 1$ cholera-associated hospital or community death of individual $\geq$ five years of age during the past seven days of record
#2 <sup>SE</sup>	and/or	$\geq 10$ suspected cholera cases aged $\geq$ five years during the past seven days of record
#3	and/or	$\geq 5$ suspected cholera cases aged $\geq$ five years originating from a similar locality during the past seven days of record
#4	and/or	$\geq 50\%$ of positive rapid diagnostic tests (RDT)
#5 <sup>E</sup>	and/or	$\geq 1$ stool culture positive for <i>Vibrio cholerae</i> O1 at the LNSP*
Orange alert		
#6 <sup>SE</sup>		No red alert criteria
#7 <sup>SE</sup>	and	Twofold or more increase in suspected cases aged $\geq$ five years during the past seven days compared with the previous seven-day period
#8 <sup>SE</sup>	and/or	Red alert during the previous week
#9	and/or	Outbreak rumor <sup>S</sup> in the commune
Green alert		
#10 <sup>SE</sup>		No red or orange alert criteria for at least two weeks

\* DELR, Haiti Directorate for Epidemiology Laboratory and Research; LNSP, National Laboratory of Public Health

<sup>S</sup> Criteria that were prospectively used by the DELR on a weekly basis (#1 #2 #6 #7 #8 #10) using often incomplete and delayed cholera surveillance reports; the prospective collection and analysis of data actually appeared to be difficult for the other criteria

<sup>E</sup> Criteria that were retrospectively used in the study to identify retrospective alerts (#1 #2 #5 #6 #7 #8 #10), using consolidated databases.

<sup>S</sup> Rumors define any information about cholera outbreaks that is not produced by the surveillance system of suspected cases and deaths and stool cultures

## Data collection

We used anonymous information of daily reported cholera suspected cases, deaths and stool culture results, with the authorization of, and in collaboration with, the Haitian Ministry of Health authorities. The dates of alert identification by the DELR and the dates of diffusion to partners via alert bulletin email were prospectively collected. UNICEF provided the list of its expenditure for mobile teams (through international or non-governmental organizations, and MSPP with EMIRAs) and for other cholera related activities such as cholera surveillance, coordination of partners and other WaSH prevention activities. UNICEF also provided a list of response items (chlorine, soaps, buckets, oral rehydration salts...) delivered to its partners for response and prevention activities, as well as their cost. Records and details of field activities notified by WaSH mobile teams included the date, location (*i.e.* commune, communal section, locality) and nature (*i.e.* investigation, education sessions, distribution of soap and chlorine, implementation of water-chlorination points, household decontamination...). For each response, field organizations mentioned the main institution that notified related cases, so that it was possible to link field activities with institutional epidemiological information. Response data were used with the consent of health authorities, implementing

organizations and funders. Country and commune population estimates were provided by the Haitian Institute of Statistics and Informatics ([http://www.ihsi.ht/pdf/projection/Estimat\\_PopTotal\\_18ans\\_Menag2015.pdf](http://www.ihsi.ht/pdf/projection/Estimat_PopTotal_18ans_Menag2015.pdf), accessed 26 January 2018). Satellite estimates of daily-accumulated rainfall (area-averaged TRMM\_3B42\_daily v7) were extracted from NOAA websites on the entire surface of Haiti, and on the centroid of each of the 140 communes (<http://giovanni.gsfc.nasa.gov/giovanni/>, accessed 26 January 2018). Corresponding databases are listed in Supplementary Table S2.

### Retrospective identification of cholera alerts

Because the cholera alert system was launched to prospectively monitor the epidemic, we used cholera alerts as an outbreak proxy to retrospectively evaluate the implementation of the alert-response strategy. Hence, we could detect delays in notification and analysis of cholera routine surveillance data at DELR, as well as the capacity of response teams to directly get epidemiological information from the community, treatment institutions and departmental directorates of health. We computed retrospective cholera alerts classified as *red*, *orange* or *green* at commune-level and per epidemiological week, between July 2013 (27th epidemiological week, 2013w27) and June 2017 (2017w26), using consolidated databases of institutional cholera suspected cases, suspected deaths and of stool culture results, as well as alert criteria including results of stool culture for cholera (criteria #5) (Table 1). Retrospective alerts were then used as a proxy to: (i) describe the epidemic; (ii) assess the surveillance system by comparing alerts that DELR prospectively identified and communicated at the central level with alerts that *should* have been prospectively identified and communicated; and, (iii) assess the field response implemented by mobile teams to outbreaks that *should* have been responded.

Weekly evolution of alerts was plotted at national levels. The relative proportion of *red*, *orange* and *green* cumulated alerts was mapped at the communal level. Main alert characteristics (commune population, accumulated rainfall in the commune, number of suspected cases and deaths, number of stool samples received at the LNSP lab for cholera confirmation and culture positivity ratio) were summarized for each alert level and plotted for each alert level, each of the 8 semesters of the 4-year study period, each of the 10 departments.

### Evaluation of the implementation of the alert-response strategy

To evaluate the implementation of the alert-response strategy, we linked retrospective alerts with alerts actually identified and communicated by DELR and with response intervention conducted in the same commune. We then assessed the proportions of *red* and *orange* retrospective alerts, which were (1) identified by the DELR, (2) communicated by email or on the MSPP website, and, (3) responded by WaSH mobile teams during the same epidemiological week and during the same or following week, considering that outbreaks may start on weekends. We also counted the number of WaSH response interventions conducted for each alert. Each indicator was plotted by alert level, semester and department. The differences between alert levels (*red* versus *orange*), the evolution along the semesters of the study (from 1 to 8) and the heterogeneity between the 10 departments were estimated via multivariate analysis using generalized linear mixed models [52]. This approach allowed us to take into account two levels of spatial heterogeneity, by modeling departments and communes as nested random effect variables. Using a binomial distribution for alert identification, communication and response rates, models estimated odds ratios for alert levels and semesters, and *P*-values. Using a negative binomial distribution for numbers of response interventions, of educated persons, of decontaminated houses, of households which received chlorine tablets and of chlorinated water sources, models estimated relative risks and *P*-values.

To assess the capacity of WaSH mobile teams to independently identify and respond to cholera cases, we looked at the alert level communicated by DELR for communes where interventions were conducted and plotted these counts by semester and department. For each intervention, we also

counted and plotted the number of cases notified in the commune during the same week. The numbers of people targeted by education sessions, of houses decontaminated by chlorine spraying, of households who received chlorine tablets, and of water sources that were chlorinated was computed for each response intervention, and plotted by semester and department.

## Software and packages

Data management was performed using Microsoft® Excel for Mac v15.32. The map was drawn using QGIS v2.18 (<http://www.qgis.org>, accessed 26 January 2018). Graph design and statistical analyses were performed using RStudio version 1.0.136 for Mac (<http://www.rstudio.com/>, accessed 26 January 2018) with R version 3.4.2 for Mac (<http://www.r-project.org/>, accessed 26 January 2018) and the ggplot2 [53] (<https://cran.r-project.org/web/packages/ggplot2/index.html>, accessed 26 January 2018), and lme4 [54] (<https://cran.r-project.org/web/packages/lme4/index.html>, accessed 26 January 2018) packages.

## Results

### Evolution of the epidemic and timeframe of the response strategy

Between the launch of the nationwide alert-response strategy in July 2013 (2013w27) and the end of this 209-week study period in June 2017 (2017w26), 149,690 suspected cases and 1,498 deaths were notified across Haiti (Figure 1 Panel A). A total of 8,094 stool samples were cultured and 52% of them were positive for *V. cholerae* O1 (Figure 1 Panel A).

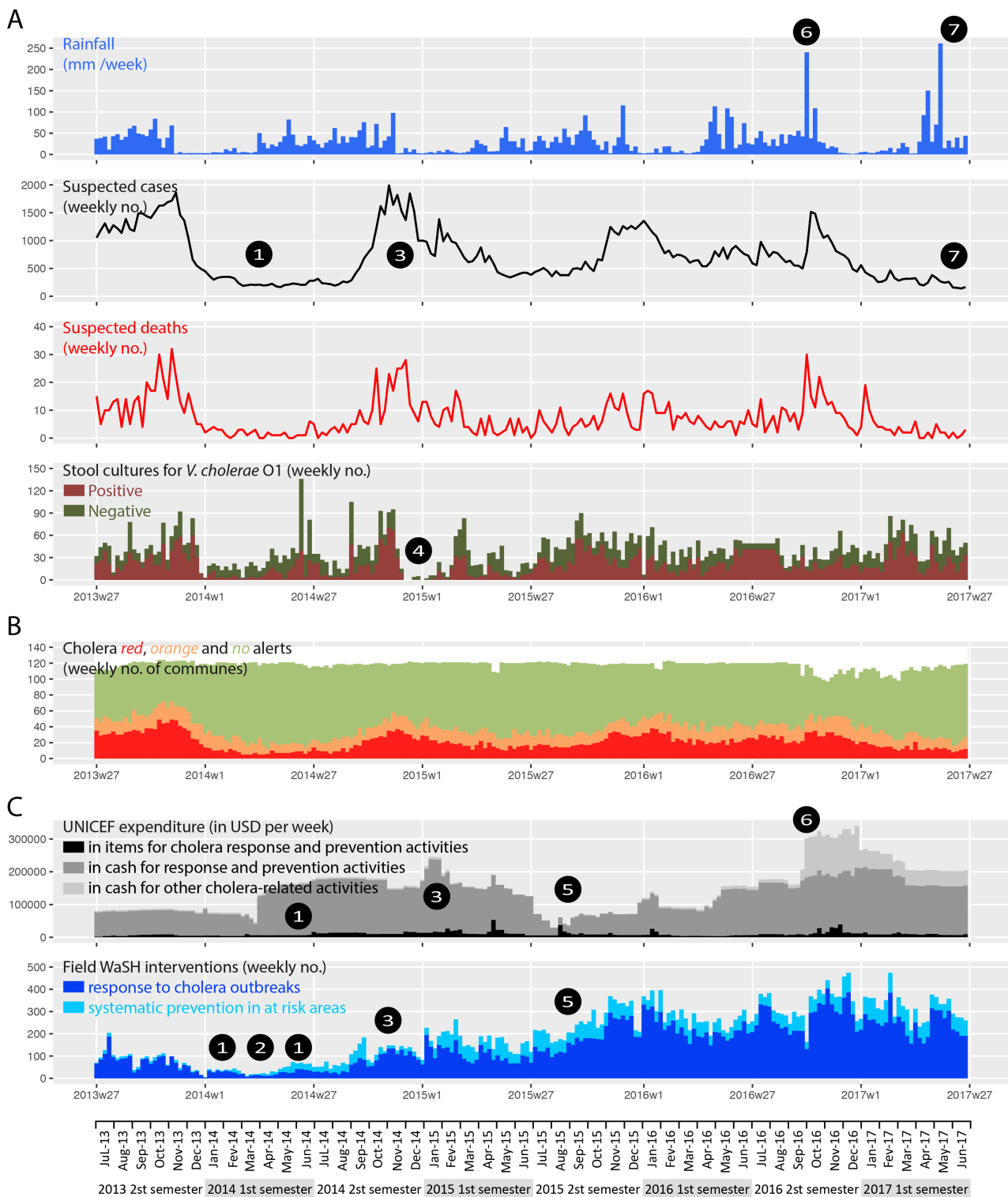
During the same period, UNICEF expended USD 25.4 million through international or non-governmental organizations for WaSH mobile teams and with MSPP for EMIRAs, USD 2.0 million in response items (chlorine, soaps, buckets, oral rehydration salts...), and an additional USD 3.7 million for other cholera related activities such as cholera surveillance, coordination of partners and other WaSH prevention activities (Figure 1 Panel C). UNICEF delivered 3.3 million soaps, 140 million AQUATABS™ 33mg tablets and 3.6 million oral rehydration salts (ORS) sachets to UNICEF partner organizations (data not shown). A total of 31,306 interventions in response to cholera cases and 9,540 systematic prevention interventions were notified by WaSH partners of UNICEF (Fig 1 Panel C). Their mobile teams provided education sessions to 2.9 million people, decontaminated 179,830 houses, distributed chlorine tablets to 757,693 households as well as soaps to 593,494 households, and supplied chlorination at 2,282 water sources or networks. Unfortunately, field interventions of EMIRAs and mobile teams of medical international or non-governmental organizations could not be exhaustively counted and described, although most WaSH interventions integrated medical and governmental staff. Notably, information concerning the use of doxycycline chemoprophylaxis was not available for analysis.

The strategy started during the 2013 rainy season, and the case load slowly rose to 1,614 weekly suspected cases in November 2013 (Figure 1). Cholera incidence then collapsed, concomitantly with the dry season and around 50 weekly response interventions. An unprecedented 38-week period with under 500 notified cases weekly (including 23 weeks under 250 cases) expended until late September 2014, despite regular precipitation from March and few notified field interventions regardless of the increase of available funds. An abrupt increase in cholera incidence to 1,990 at 2014w45 was then observed from September, which mainly affected the Port-au-Prince Metropolitan Area and notably involved vandalism of main water pipes by gangs (results from unpublished field investigations). This crisis in the capital persisted throughout the 2014-2015 dry season, and stimulated a marked intensification of field interventions by WaSH partners. A second step in intensification of the strategy occurred during 2015 2<sup>nd</sup> semester despite a notable but temporary reduction of available funds. Years 2015 and 2016 exhibited a sustained cholera case load oscillating between 500 and 1,500 per week with seasonal fluctuations, notably following hurricane Matthew that stroke South and



Grand'Anse departments in October 2016. Additional funds were obtained so that a high volume of field interventions could be maintained until the end of the study period in June 2017. Concomitantly, cholera incidence exhibited a continuous decrease and remained below 500 weekly cases in 2017, although exceptional precipitations were recorded in April and May (Figure 1).

**Figure 1 – Weekly evolution of: accumulated rainfall and cholera epidemic indicators (Panel A); cholera retrospective alerts (Panel B); and implementation of the response strategy by UNICEF (Panel C), from mid-2013 (2013w27) to mid-2017 (2017w26).** Area-averaged cumulated rainfall was obtained from NOAA. Suspected cholera cases, cholera-associated deaths, positive and negative stool cultures tested for *V. cholerae* O1 were provided by routine surveillance databases of the MSPP (Ministry of Public Health and Population). Details on expenditure and field WaSH (Water Sanitation and Hygiene) interventions were provided by UNICEF. *Response* refers to activities (i) to (vi) described in the Methods section, implemented in response to cholera cases. *Prevention* refers to activities (i) to (vi) implemented systematically in at risk areas. *Other cholera-related activities* refers to cholera surveillance, coordination of partners, as well as other WaSH prevention activities (*i.e.* in response to hurricane Matthew ⑤ from October 2016). ①, prolonged low incidence period in 2014, despite regular precipitation from March and few WaSH response interventions regardless of the increase of funds provided by UNICEF to partner organizations from April; the temporary drop in March was consecutive to the Chikungunya epidemics and a halt of contracts with several partner organizations; ②, launch of EMIRAs by MSPP from March 2014. ③, cholera outbreaks in the Port-au-Prince Metropolitan Area from September 2014 involving vandalism of main water pipes by gangs; escalation of interventions, and peak of funding in January 2015 in response to the crisis. ④, no stool cultures could be performed between December 2014 and January 2015 because of a shortage of laboratory reagents at the National Public Health Lab (LNSP). ⑤, intensification of the response strategy despite a contraction of funding. ⑥, cholera incidence decrease in spite of important rainfall.



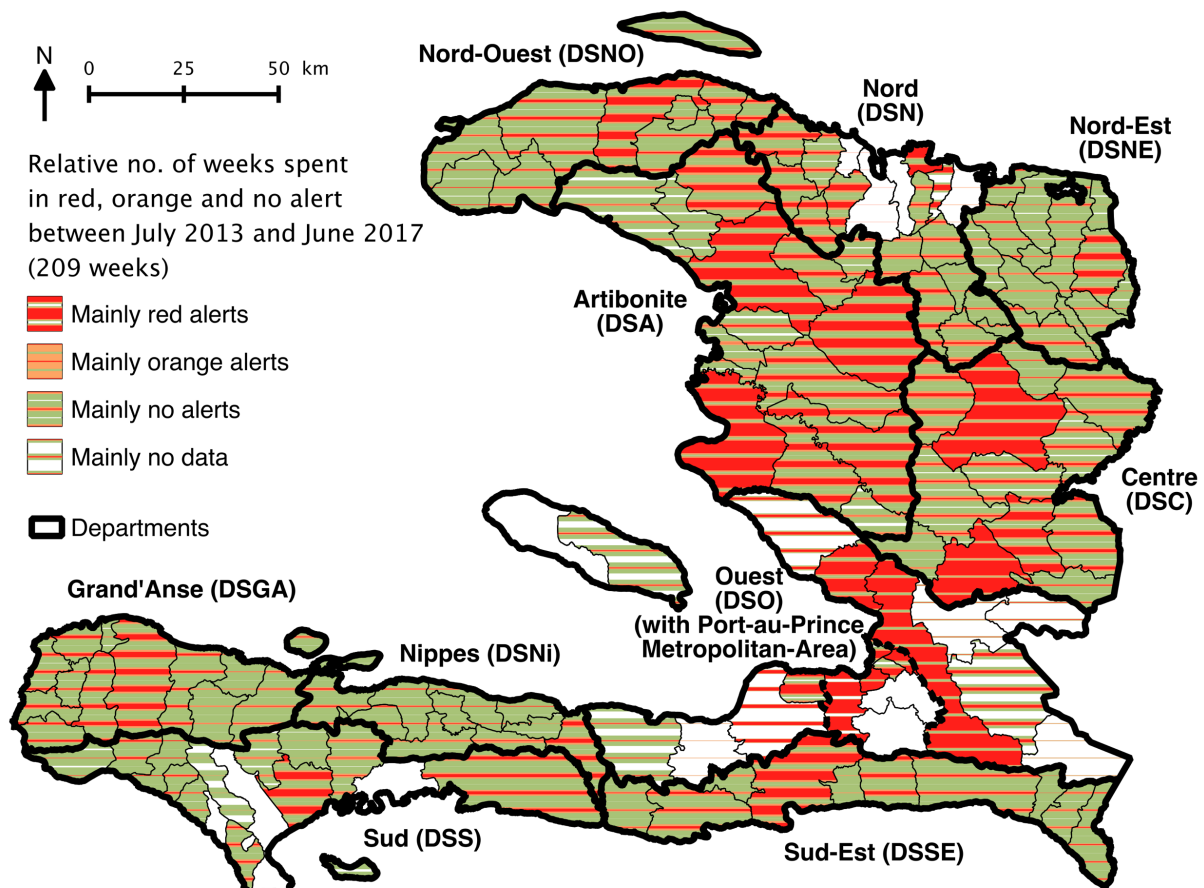
### Time-space distribution and description of cholera retrospective alerts

Using completed cholera databases of case, death and stool culture, and, the DELR criteria (Table 1), we retrospectively computed a total of 4,378, 3,475 and 16,710 *red*, *orange* and *green* alerts, respectively, across all 140 communes and during the 209 weeks between mid-2013 (2013w27) and mid-2017 (2017w26). A median weekly number of 20 communes were in *red alert* (Table 2). But as expected, alerts exhibited a temporal evolution consistent with the dynamic of the epidemic (Figure 1 Panel B), with a weekly minimum of 5 *red* communes observed in March-April 2014, and a maximum of 49 in October-November 2013. The distribution of cholera alerts also showed a

marked spatial heterogeneity, as *red* and *orange* alerts mainly clustered in the departments of Ouest (DSO, especially in Port-au-Prince Metropolitan Area), Centre (DSC) and Artibonite (DSA) (Figure 2).

Rainfall accumulated during *Red* alerts appeared more important than during *orange* alerts or in the absence of alert (*green*) (Table 2, Supplementary Figure S2). *Red* alerts were generally located in more populated communes as compared with *orange* or *green* alerts, but they affected from very small rural to highly populated urban communes (Table 2, Supplementary Figure S2). Additionally, *red* alerts corresponded to a variety of epidemic situations (Table 2): some of which were associated with less than 10 weekly cases and no reported deaths, but a single positive *V. cholerae* O1 culture that suggested low-grade confirmed cholera transmission, while other such alerts corresponded to more than 100 suspected cases with several associated deaths, or numerous stool samples all positive for *V. cholerae* O1 (Table 2, Supplementary Figure S2).

**Figure 2 – Communal distribution of retrospectively identified alerts from July 2013 (2013w27) to June 2017 (2017w26). The respective number of weeks that each commune spent in red, orange or green alert, is indicated via a stripe pattern gradient.**



**Table 2 – Characteristics of retrospectively identified *red*, *orange* and *green* alerts**

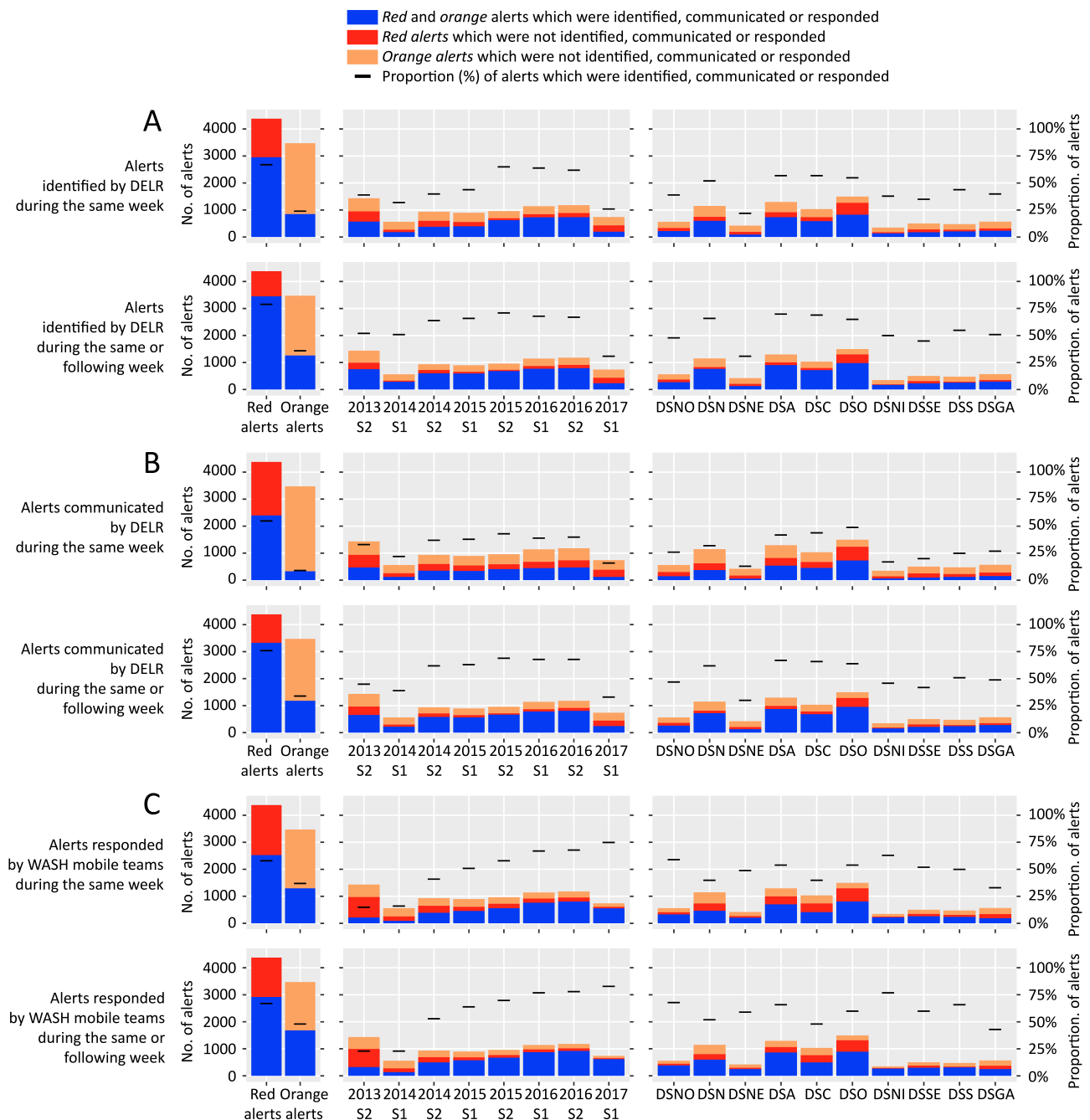
	All alert levels	<i>Red</i>	<i>Orange</i>	<i>Green</i>
No. of commune-weeks	24563	4378	3475	16710
(% of total)		(18%)	(14%)	(68%)
Median weekly no. of communes in alert		20	16	80
[min-max]		[5-49]	[6-28]	[45-107]
Median population of the commune, x1000 inhabitants	40.5	119	48.3	34.1
[min-max]	[5.7-972]	[7.6-972]	[7.6-972]	[5.7-972]
Median weekly accumulated rainfall in the commune, mm	9	15	9	8
[min-max]	[0-396]	[0-385]	[0-396]	[0-396]
Median no. of suspected cases per alert	0	19	3	0
[min-max]	[0-698]	[0-698]	[0-21]	[0-24]
Median no. of suspected deaths per alert	0	0	0	0
[min-max]	[0-13]	[0-13]	[0-2]	[0-2]
No. of stool samples received at the LNSP for <i>V. cholerae</i> culture	8379	7595	325	459
Culture positivity ratio, %	53%	58%	0%	0%

### Identification and communication of alerts by DELR

From July 2013 to June 2017, DELR staff performed cholera alert analyses for 192 of the 209 studied epidemiological weeks (92%). To identify cholera alerts, DELR actually never used patient addresses, rapid diagnostic test results, stool culture results or outbreak rumors, as initially proposed (Table 1), because prospective collection and analysis of these data appeared to be difficult. Via weekly epidemiological situation rooms, emails or through the MSPP website, DELR communicated alert analyses covering 181 of the 209 studied epidemiological weeks (88%). But alert analyses were not systematically complete.

Using retrospective alerts computed on the 2013w27 – 2017w26 period as the standard, DELR correctly identified 48% of *red* and *orange* alerts during the same week, 60% during the same or the following week (Table 3). DELR communicated 35% of *red* and *orange* alerts during the same week and 57% during the same or the following week (Table 3). Using generalized linear mixed models taking into account the time evolution (semesters along the study) and the heterogeneity between departments, alert identification and communication appeared significantly better for *red* than for *orange* alerts, whether during the same week (respective odds ratios (ORs) [95%-CI], 6.05 [5.39-6.80] and 8.61 [7.50-9.91]) or during the same or following week (Figure 3 Panel A&B, Table 3). Along the course of the study period, identification of *red* and *orange* alerts significantly improved during the same week but not during the same or following week (Figure 3 Panel A, Table 3). Conversely, communication during the same week remained stable, but improved during the same or following week (Figure 3 Panel B, Table 3). In particular, alert identification and communication dramatically dropped during the first semester of 2017 (Figure 3 Panel A&B). Identification and communication exhibited a significant heterogeneity between the 10 departments ( $P$ -values < 0.0001) (Figure 3 Panel A&B, Table 3).

**Figure 3 – Identification of cholera alerts by DELR (Panel A), communication of cholera alerts by DELR (Panel B) and response to cholera alerts by WaSH mobile teams (Panel C), during the same week and during the same or following week, from July 2013 to June 2017: difference between alert levels (*red vs orange*), evolution along the eight semesters of the study period, and difference between departments.** Stacked bar plots show the following: in blue, the number of *red* or *orange* alerts which were identified, communicated or responded during the same week, and during the same or following week; in red and in orange, the number of *red* or *orange* alerts which were *not* identified, communicated or responded during the same week, and during the same or following week. Black dashes show the proportion of *red* or *orange* alerts which were identified, communicated or responded during the same week, and during the same or following week. DSNO, Nord-Ouest department; DSN, Nord; DSNE, Nord-Est; DSA, Artibonite; DSC, Centre; DSO, Ouest; DSNi, Nippes; DSSE, Sud-Est; DSS, Sud; DSGA, Grand’Anse department.



**Table 3 – Identification, communication of cholera alerts by DELR, and response to cholera alerts by WaSH mobile teams during the same week and during the same or following week, from July 2013 to June 2017: difference between alert levels, evolution along the eight semesters of the study period, and heterogeneity between departments.**

<i>Red or orange alerts</i> (n = 7,853):	no (%)	Difference between alert levels ( <i>Red</i> vs <i>Orange</i> alerts)		Evolution throughout the study (per semester since July 2013)		Difference between departments (vs DSO*)
		Odds ratio [95%-CI]	<i>P</i> -value	Odds ratio [95%-CI]	<i>P</i> -value	<i>P</i> -value
Identification by DELR* during the same week	3,800 (48%)	6.05 [5.39-6.80]	< 0.0001	1.14 [1.12-1.17]	< 0.0001	< 0.0001
Identification by DELR* during the same or following week	4,710 (60%)	6.23 [5.54-7.02]	< 0.0001	1.02 [0.99-1.04]	0.17	< 0.0001
Communication by DELR* during the same week	2,725 (35%)	8.61 [7.50-9.91]	< 0.0001	1.01 [0.99-1.04]	0.40	< 0.0001
Communication by DELR* during the same or following week	4,509 (57%)	5.86 [5.22-6.58]	< 0.0001	1.11 [1.08-1.13]	< 0.0001	< 0.0001
Response by WaSH mobile teams during the same week	3,822 (49%)	2.52 [2.23-2.86]	< 0.0001	1.62 [1.57-1.66]	< 0.0001	< 0.0001
Response by WaSH mobile teams during the same or following week	4,604 (59%)	2.52 [2.22-2.87]	< 0.0001	1.68 [1.63-1.73]	< 0.0001	< 0.0001

\* DELR, Directorate of Epidemiology Laboratory and Research of the Ministry of Health (MSPP); DSO, West department

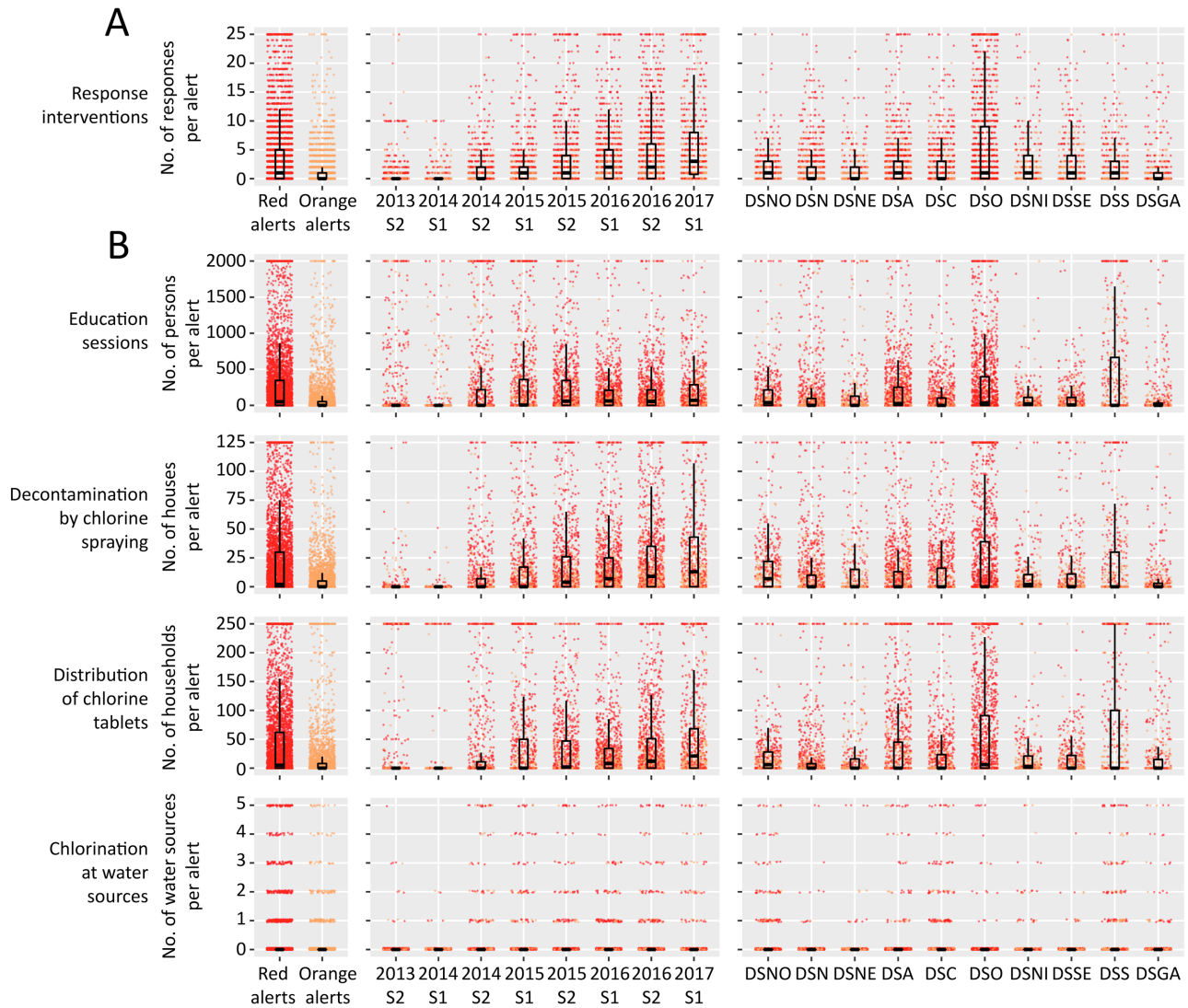
### Response to cholera alerts by WaSH mobile teams

Between July 2013 and June 2017, WaSH mobile teams reported 31,306 field response interventions against cholera across the country, out of which 61% were conducted in communes in *red* alert and 14% in communes in *orange* alert (data not shown). The rest targeted *green* communes with sporadic cases (13%), with no case (7%), or commune with no data (6%).

Between July 2013 and June 2017, WaSH mobile teams responded to 49% of the 7,853 *red* or *orange* alerts during the same week, and to 59% of them during the same or following week (Table 3). Using generalized linear mixed models, response rates were significantly better for *red* than for *orange* alerts, whether during the week (OR, 2.52 [2.23-2.86]) or during the same or following week (Figure 3 Panel C, Table 3). The WaSH response rate to *red* and *orange* alerts significantly improved throughout the study period (Figure 3 Panel C, Table 3). For instance, response to *red* alerts during the same week climbed from 18% during 2013 2<sup>nd</sup> semester to 84% during 2017 1<sup>st</sup> semester (Figure 3 Panel C). Rates for *orange* alerts were 10% and 67%, respectively, during the same periods (Figure 3 Panel C). *Red* alerts received a median of 1 response intervention during the same week [Interquartile range IQR, 0-5], which was significantly more than *orange* alerts (Relative risk (RR), 2.39 [2.20-2.59]) (Figure 4 Panel A, Table 4). The number of response interventions per *red* or *orange* alert significantly increased during the study, and it exhibited a significant heterogeneity between the 10 departments (*P*-value < 0.0001) (Figure 4 Panel A, Table 4).

Overall, 47% of the 7,853 *red* and *orange* alerts received education sessions during the same week, which addressed a median of 209 persons per alert; 44% of alerts were responded by the decontamination of a median of 20 houses; chlorine tablets were distributed in 44% of alerts, to a median of 40 households; and chlorination at water sources was implemented in 7% of alerts (data not shown). The numbers of persons who were educated, of houses that were decontaminated, of households who received chlorine tablets and of water sources that were chlorinated during the same week were significantly higher for *red* than for *orange* alerts (Figure 4 Panel B, Table 4). These four indicators significantly increased during the study, and they were significantly heterogeneous between the 10 departments (Figure 4 Panel B, Table 4).

**Figure 4 – Characteristics of WaSH response to cholera alerts from July 2013 to June 2017: number of response interventions (Panel A), number of people educated, number of decontaminated houses, number of households to which chlorine tablets were distributed and number of water sources that were chlorinated (Panel B) during the same week as alert; difference between alert levels (red vs orange), evolution along the eight semesters of the study period, and difference between departments.** Dots show the characteristics of response to each red or orange alert. Boxplots show the median, interquartile range (IQR) and whiskers (1.5\*IQR) of characteristics of response to alerts. DSNO, Nord-Ouest department; DSN, Nord; DSNE, Nord-Est; DSA, Artibonite; DSC, Centre; DSO, Ouest; DSNi, Nippes; DSSE, Sud-Est; DSS, Sud; DSGA, Grand’Anse department.



**Table 4 – Characteristics of WaSH response to cholera alerts from July 2013 to June 2017: number of response interventions, number of people educated, number of decontaminated houses, number of households to which chlorine tablets were distributed and number of water sources that were chlorinated during the same week as alert; difference between alert levels (*red* vs *orange*), evolution along the eight semesters of the study period, and heterogeneity between departments.**

<i>Red or orange</i> alerts (n = 7,853):	Median [IQR*]	Difference between alert levels ( <i>Red</i> vs <i>Orange</i> alerts)		Evolution throughout the study (per semester since July 2013)		Difference between departments (vs DSO*)
		Relative risk [95%-CI]	<i>P</i> -value	Relative risk [95%-CI]	<i>P</i> -value	<i>P</i> -value
WaSH response during the same week, no. of interventions per alert	0 [0-3]	2.39 [2.20-2.59]	< 0.0001	1.46 [1.43-1.48]	< 0.0001	< 0.0001
Education sessions during the same week, no. of persons educated per alert	0 [0-187]	3.13 [2.66-3.69]	< 0.0001	1.08 [1.04-1.12]	< 0.001	< 0.0001
Decontamination by spraying during the same week, no. of houses per alert	0 [0-16]	3.05 [2.70-3.44]	< 0.0001	1.77 [1.72-1.83]	< 0.0001	< 0.0001
Distribution of chlorine tablets during the same week, no. of households per alert	0 [0-32]	2.80 [2.37-3.30]	< 0.0001	1.03 [1.02-1.04]	< 0.0001	< 0.0001
Chlorination at water sources during the same week, no. of sources per alert	0 [0-0]	3.53 [2.68-4.65]	< 0.0001	1.28 [1.20-1.37]	< 0.0001	< 0.0001

\* IQR, Interquartile range; DSO, West department

## Discussion

When the Haitian Government, UNICEF and their partners launched the cholera alert-response activities in July 2013, Haiti remained the most cholera-affected country worldwide [10] but few interventions aiming to prevent transmission were continued in the field [11]. For the first time since the beginning of the epidemic, a nationwide coordinated program aimed to mitigate cholera transmission by rapidly responding to every cholera suspected case through WaSH field interventions targeting their neighboring community. Data of 31,306 WaSH response interventions gathered and analyzed until June 2017 show that execution of such a strategy was feasible and its cost was less than USD 8 million per year.

Indeed, implementation of the cholera response strategy was initially laborious and remained heterogeneous across Haitian departments, because it was impeded by logistic obstacles when aiming to reach remote and mountainous localities, the heterogeneity of contracted organizations, and difficulties to coordinate their actions, notably with peripheral health authorities. Over several periods, it proved difficult to secure the funding of the strategy. This generated short term contracts, which likely impaired the response capacities and efficiency of mobile teams, like during the 1<sup>st</sup> semester of 2014. During this period, response teams were also temporally weakened by administrative constraints and a severe but under-reported chikungunya epidemic that affected a large proportion of NGO staff and field workers [55]. Nevertheless, response interventions drastically improved in promptness, exhaustiveness and intensity over the study period, so that during 1<sup>st</sup> semester 2017, 75% of *red* and *orange* alerts were responded within the same epidemiological week, a median of 70 persons were educated per *red* or *orange* alert, a median of 13 houses were decontaminated and a median of 21 households received water chlorination tablets.

This study also presented the original cholera alert system which was set by DELR to monitor the epidemic and the response strategy, and soon became popular at central and departmental levels. However, these *red* orange and *green* alerts presented important limits. The selected alert definitions could not be compared to any gold standard, and the 58% culture positivity ratio of *red* alerts suggests



a background noise of non-relevant alerts which was probably due to non-choleric acute watery diarrhea cases seeking care in the largest or most advanced cholera treatment centers [5]. Conversely, the severity of outbreaks was not well captured by *red* alerts that represented a wide range of epidemic situations. Surveillance data used for alert identification did not include community cases, and the community deaths were inconstantly reported [5]. Therefore, some cholera outbreaks could have been overlooked, especially in remote areas. In addition, DELR prospectively communicated only 35% of cholera alerts during the same week, mainly because surveillance data were obtained with chronic delays. Communes in alert did not locate the actual patients' place of residence but their treatment institution that notified cases. The weekly time scale of alerts was also too long compared with cholera median incubation of 1.4 days [56]. For these reasons, alerts were hardly used to rapidly guide field response interventions. Instead, mobile teams directly gathered their own epidemiological data in treatment institutions, and peripheral health authorities progressively established and shared detailed line listings of suspected cholera cases, which included patient address. Hence, response rates by WaSH mobile teams soon became higher than communication rates by DELR. Anyhow, identification and communication of alerts was progressively abandoned by DELR after departure of the epidemiologist in charge of this work.

To monitor the implementation of the alert-response strategy, we chose to use alerts that were retrospectively computed based on consolidated surveillance databases. These alerts proved a practical and original indicator, but they brought several limits to our analyses. Their weekly time scale largely exceeded the 48h response deadline that mobile teams were requested to respect, which may have overestimated response rates. Interventions were linked with alerts, based on the commune where patients were treated, whereas they were conducted locally, at patients' homes and neighborhoods. Computed response rates were thus a surrogate of real response activities, which we believe relevant enough to assess the dynamic of the implementation of this strategy. A new reporting form of response interventions based on the line-listing has been used since the beginning of 2017, which should provide more accurate indicators for future analyses. The quality of reporting appeared heterogeneous between the organizations implementing response interventions, especially for exact quantities of distributed items we thus could not include in our analyses. Thanks to several evolutions of reporting forms, this improved along the study period. Unfortunately, we could not include response activities conducted by EMIRAs and medical organizations in our evaluation. Many of their interventions were common with reporting WaSH mobile teams, but available data about medical activities such as active case finding and chemoprophylaxis in the community was scarce. Moreover, several other organizations operated in community prevention of cholera during the study period, such as Brigada Médica Cubana, Médecins sans Frontières – Netherlands, Gheskio, Zanmi Lasante, Canadian Red Cross... but their field response activities to cholera cases appeared limited in comparison with the 31,306 WaSH response interventions included in the present study.

Additional evaluations are needed to better examine the quality of response interventions in terms of timing and geographic targeting, number of reached persons, methodology of education sessions, quantity of distributed water treatment products, as well as their impact on hand washing, defecation or water treatment practices [57,58]. Post-distribution monitoring has been encouraged from 2017 and their data should be analyzed. Considering the potential risk of resistance selection [49], use of chemoprophylaxis using doxycycline should be quantified and evaluated. After three years of reactive use, it seems that no resistant *V. cholerae* clinical strain has been isolated in Haiti so far (data not shown).

Evaluation of the efficiency and impact of this response strategy was out of this paper's scope. This is a complex task and several methodological approaches are being considered. But together with other prevention activities conducted by MSPP, DINEPA and other organizations, the few oral vaccination campaigns implemented since 2012 [59], and the slow progress achieved in water infrastructure provision, this national alert-response strategy may have played a key role in the drops in cholera incidence observed in 2014 and in 2017. Unlike in 2014, late 2017 epidemiological reports

even showed an unprecedented low cholera incidence in spite of the rainy season [3]. These achievements seemed unlikely according to the most recent and fitted cholera transmission model [60], PAHO predictions [61,62] and objectives of the 2013-2022 Cholera Elimination Plan [12].

The rapid response strategy still constitutes a core element of the 2016-2018 mid-term development of the national plan for cholera elimination of the Haitian Government [63], and of the new United Nations approach to cholera in Haiti that was adopted by the General Assembly in December 2016 [64]. However, it has become more and more difficult to get funding, and continuation of the strategy throughout 2018 is not guaranteed. It is mandatory to optimize future elimination efforts and thus to further evaluate the impact of each component of the cholera response. Results of ongoing dedicated studies will be very informative for actors involved in the implementation of cholera control strategies as well as international donors.

## Acknowledgements

We are grateful to the people who organized the strategy at the national and departmental levels. We also thank the staff of MSPP, UNICEF DINEPA and NGOs, who cared for patients, conducted alert investigations, implemented and coordinated field responses, gathered epidemiological and intervention data, analyzed stool cultures, or compiled and prospectively analyzed the cholera and interventions databases.

## References

1. Orata FD, Keim PS, Boucher Y. The 2010 Cholera Outbreak in Haiti: How Science Solved a Controversy. *PLoS Pathog.* 2014;10: e1003967. doi:10.1371/journal.ppat.1003967
2. World Bank. World Databank. World Development Indicators (WDI) & Global Development Finance (GDF). [cited 22 Mar 2016]. Available: <http://databank.worldbank.org/ddp/home.do>
3. Republic of Haiti. Ministry of Public Health and Population. [Centre de Documentation. Bulletins cholera 2010-2017] (French). [cited 1 Mar 2017]. Available: <http://mspp.gouv.ht/newsite/documentation.php>
4. Global Task Force on Cholera Control. Cholera outbreak: assessing the outbreak response and improving preparedness. Geneva: World Health Organization (WHO); 2010 Nov p. 87. Available: <http://www.who.int/cholera/publications/OutbreakAssessment/en/>
5. Barzilay EJ, Schaad N, Magloire R, Mung KS, Boncy J, Dahourou GA, et al. Cholera Surveillance during the Haiti Epidemic - The First 2 Years. *N Engl J Med.* 2013;368: 599–609. doi:10.1056/NEJMoa1204927
6. Santa-Olalla P, Gayer M, Magloire R, Barraïis R, Valenciano M, Aramburu C, et al. Implementation of an Alert and Response System in Haiti during the Early Stage of the Response to the Cholera Epidemic. *Am J Trop Med Hyg.* 2013;89: 688–697. doi:10.4269/ajtmh.13-0267
7. Gelting R, Bliss K, Patrick M, Lockhart G, Handzel T. Water, Sanitation and Hygiene in Haiti: Past, Present, and Future. *Am J Trop Med Hyg.* 2013;89: 665–670. doi:10.4269/ajtmh.13-0217
8. Gartley M, Valeh P, Lange R de, DiCarlo S, Viscusi A, Lenglet A, et al. Uptake of household disinfection kits as an additional measure in response to a cholera outbreak in urban areas of Haiti. *J Water Health.* 2013;11: 623–628. doi:10.2166/wh.2013.050

9. Eisenberg MC, Kujbida G, Tuite AR, Fisman DN, Tien JH. Examining rainfall and cholera dynamics in Haiti using statistical and dynamic modeling approaches. *Epidemics*. 2013;5: 197–207. doi:10.1016/j.epidem.2013.09.004
10. Health Section of the Secretariat of the League of Nations. Cholera, 2013. *Wkly Epidemiol Rec*. 2014;89: 345–355.
11. Rebaudet S, Gazin P, Barraï S, Moore S, Rossignol E, Barthelemy N, et al. The dry season in Haiti: a window of opportunity to eliminate cholera. *PLoS Curr Outbreaks*. 2013;5. doi:ecurrents.outbreaks.2193a0ec4401d9526203af12e5024ddc. 10.1371/currents.outbreaks.2193a0ec4401d9526203af12e5024ddc
12. Republic of Haiti, Ministry of Public Health and Population, National Directorate for Water Supply and Sanitation. National Plan for the Elimination of Cholera in Haiti 2013-2022. Port-au-Prince, Haïti; 2013 Feb p. 114. Available: [http://www.paho.org/hq/index.php?option=com\\_docman&task=doc\\_view&gid=20326&Itemid=270&lang=en](http://www.paho.org/hq/index.php?option=com_docman&task=doc_view&gid=20326&Itemid=270&lang=en)
13. République d'Haïti, Ministère de la Santé Publique (MSPP). Enquête Mortalité, Morbidité et Utilisation des Services - EMMUS-V - HAÏTI 2012. Pétiönville, Haïti: Institut Haïtien de l'Enfance; 2013 Apr p. 536. Available: <http://mspp.gouv.ht/site/downloads/Rapport%20preliminaire%20final%20EMMUS-V.pdf>
14. Ivers LC, Teng JE, Lascher J, Raymond M, Weigel J, Victor N, et al. Use of Oral Cholera Vaccine in Haiti: A Rural Demonstration Project. *Am J Trop Med Hyg*. 2013;89: 617–624. doi:10.4269/ajtmh.13-0183
15. Rouzier V, Severe K, Juste MAJ, Peck M, Perodin C, Severe P, et al. Cholera Vaccination in Urban Haiti. *Am J Trop Med Hyg*. 2013;89: 671–681. doi:10.4269/ajtmh.13-0171
16. Ministry of Health, Haiti. Vaccination against Cholera in two areas in Haiti, 2013. *WHO Glob Immun Newsl GIN*. 2014; 6.
17. Azurin JC, Alvero M. Field evaluation of environmental sanitation measures against cholera. *Bull World Health Organ*. 1974;51: 19–26.
18. Deb BC, Sircar BK, Sengupta PG, De SP, Mondal SK, Gupta DN, et al. Studies on interventions to prevent eltor cholera transmission in urban slums. *Bull World Health Organ*. 1986;64: 127–131.
19. Taylor DL, Kahawita TM, Cairncross S, Ensink JHJ. The Impact of Water, Sanitation and Hygiene Interventions to Control Cholera: A Systematic Review. *PLoS ONE*. 2015;10: e0135676. doi:10.1371/journal.pone.0135676
20. George CM, Monira S, Sack DA, Rashid M-U, Saif-Ur-Rahman KM, Mahmud T, et al. Randomized Controlled Trial of Hospital-Based Hygiene and Water Treatment Intervention (CHoBI7) to Reduce Cholera. *Emerg Infect Dis*. 2016;22: 233–241. doi:10.3201/eid2202.151175
21. Curtis V, Cairncross S. Effect of washing hands with soap on diarrhoea risk in the community: a systematic review. *Lancet Infect Dis*. 2003;3: 275–281.

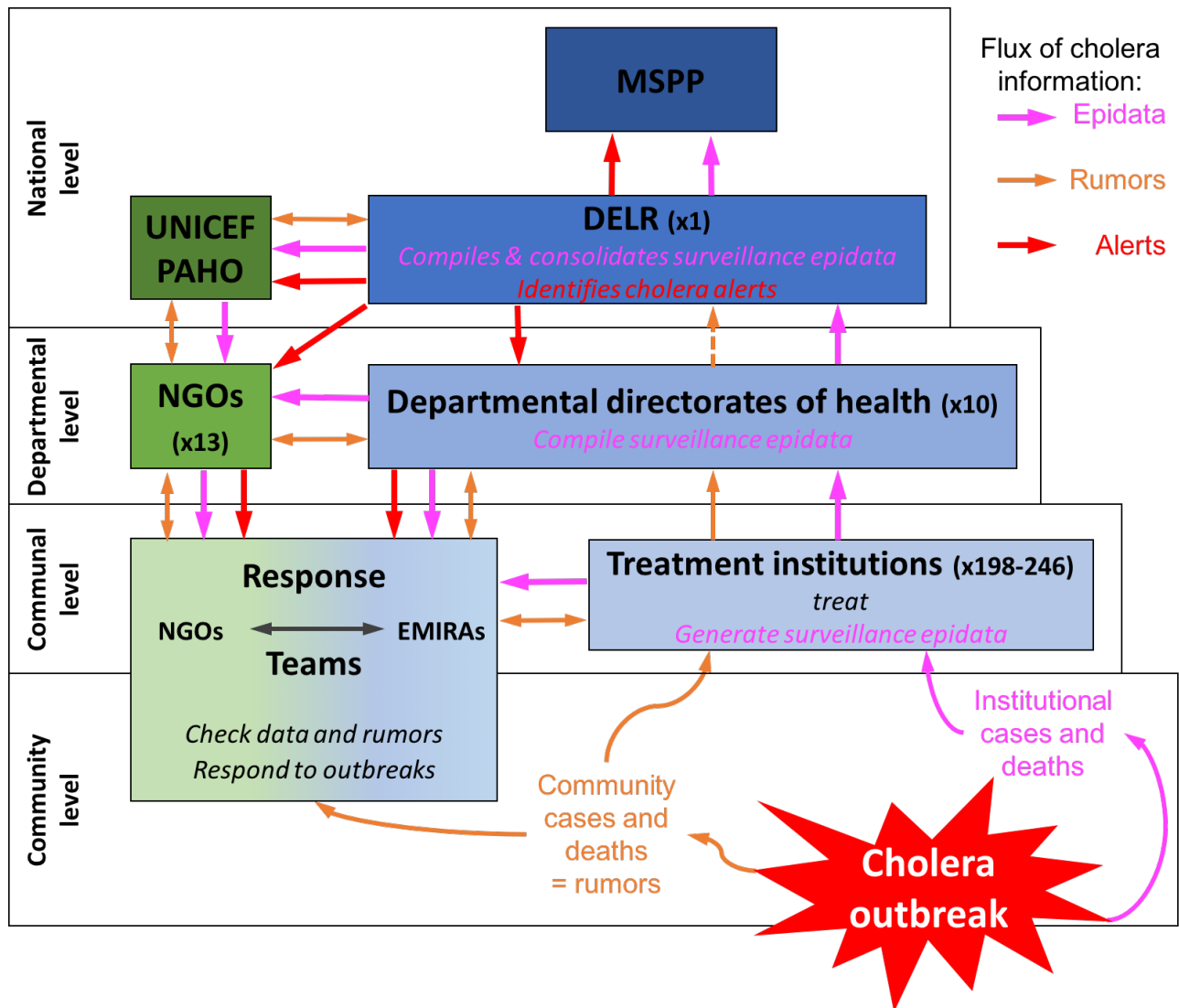
22. Fewtrell L, Kaufmann RB, Kay D, Enanoria W, Haller L, Colford JM. Water, sanitation, and hygiene interventions to reduce diarrhoea in less developed countries: a systematic review and meta-analysis. *Lancet Infect Dis.* 2005;5: 42–52. doi:10.1016/S1473-3099(04)01253-8
23. Cairncross S, Hunt C, Boisson S, Bostoen K, Curtis V, Fung IC, et al. Water, sanitation and hygiene for the prevention of diarrhoea. *Int J Epidemiol.* 2010;39: i193–i205. doi:10.1093/ije/dyq035
24. Ramesh A, Blanchet K, Ensink JHJ, Roberts B. Evidence on the Effectiveness of Water, Sanitation, and Hygiene (WASH) Interventions on Health Outcomes in Humanitarian Crises: A Systematic Review. *PLoS ONE.* 2015;10: e0124688. doi:10.1371/journal.pone.0124688
25. Pollitzer R. Cholera studies- 11. Prevention and control. *Bull World Health Organ.* 1957;17: 67–162.
26. Brown V, Jacquier G, Bachy C, Bitar D, Legros D. [Management of cholera epidemics in a refugee camp]. *Bull Société Pathol Exot* 1990. 2002;95: 351–354.
27. UNICEF. UNICEF - Cholera Toolkit. New York, NY; 2013. Available: [https://www.unicef.org/cholera\\_toolkit/](https://www.unicef.org/cholera_toolkit/)
28. Debes AK, Ali M, Azman AS, Yunus M, Sack DA. Cholera cases cluster in time and space in Matlab, Bangladesh: implications for targeted preventive interventions. *Int J Epidemiol.* 2016; doi:10.1093/ije/dyw267
29. Azman A, Alcalde FJL, Salje H, Naibei N, Adalbert N, Ali M, et al. Micro-hotspots of Risk in Urban Cholera Epidemics. *bioRxiv.* 2018; 248476. doi:10.1101/248476
30. Rowe A, Angulo FJ, L R, R T. Chlorinating well water with liquid bleach was not an effective water disinfection strategy in Guinea-Bissau. *Int J Env Health Res.* 1998;8: 339–340. doi:10.1080/09603129873444
31. Dunston C, McAfee D, Kaiser R, Rakotoarison D, Rabeloson L, Hoang AT, et al. Collaboration, cholera, and cyclones: a project to improve point-of-use water quality in Madagascar. *Am J Public Health.* 2001;91: 1574–1576. doi:10.2105/AJPH.91.10.1574
32. Einarsdóttir J, Passa A, Gunnlaugsson G. Health education and cholera in rural Guinea-bissau. *Int J Infect Dis IJID Off Publ Int Soc Infect Dis.* 2001;5: 133–138.
33. Piarroux R. [Management of a cholera epidemic by a humanitarian organization]. *Médecine Trop Rev Corps Santé Colon.* 2002;62: 361–367.
34. Guévert E, Van Hecke C, Noeske J, Sollé J, Bitá Fouda A, Manga B. [Handmade devices for continuous delivery of hypochlorite for well disinfection during the cholera outbreak in Douala, Cameroon (2004)]. *Médecine Trop Rev Corps Santé Colon.* 2008;68: 507–513.
35. Kakar F, Ahmadzai AH, Habib N, Taqdeer A, Hartman AF. A successful response to an outbreak of cholera in Afghanistan. *Trop Doct.* 2008;38: 17–20. doi:10.1258/td.2006.006336
36. Bartels SA, Greenough PG, Tamar M, VanRooyen MJ. Investigation of a cholera outbreak in Ethiopia's Oromiya Region. *Disaster Med Public Health Prep.* 2010;4: 312–317. doi:10.1001/dmp.2010.44

37. Cavallaro EC, Harris JR, da Goia MS, dos Santos Barrado JC, da Nóbrega AA, de Alvarenga de Junior IC, et al. Evaluation of pot-chlorination of wells during a cholera outbreak, Bissau, Guinea-Bissau, 2008. *J Water Health*. 2011;9: 394–402.
38. Deepthi R, Sandeep SR, Rajini M, Rajeshwari H, Shetty A. Cholera outbreak in a village in south India - Timely action saved lives. *J Infect Public Health*. 2013;6: 35–40. doi:10.1016/j.jiph.2012.05.003
39. Date K, Person B, Nygren B, Were V, Kola S, Ayers T, et al. Evaluation of a Rapid Cholera Response Activity—Nyanza Province, Kenya, 2008. *J Infect Dis*. 2013;208: S62–S68. doi:10.1093/infdis/jit198
40. Bwire G, Mwesawina M, Baluku Y, Kanyanda SSE, Orach CG. Cross-Border Cholera Outbreaks in Sub-Saharan Africa, the Mystery behind the Silent Illness: What Needs to Be Done? *PloS One*. 2016;11: e0156674. doi:10.1371/journal.pone.0156674
41. Ngwa MC, Liang S, Mbam LM, Mouhaman A, Teboh A, Brekmo K, et al. Cholera public health surveillance in the Republic of Cameroon-opportunities and challenges. *Pan Afr Med J*. 2016;24: 222. doi:10.11604/pamj.2016.24.222.8045
42. Wang A, Hardy C, Rajasingham A, Martinsen A, Templin L, Kamwaga S, et al. Notes from the Field: Chlorination Strategies for Drinking Water During a Cholera Epidemic - Tanzania, 2016. *MMWR Morb Mortal Wkly Rep*. 2016;65: 1150–1151. doi:10.15585/mmwr.mm6541a6
43. Ohene S-A, Klenyuie W, Sarpeh M. Assessment of the response to cholera outbreaks in two districts in Ghana. *Infect Dis Poverty*. 2016;5: 99. doi:10.1186/s40249-016-0192-z
44. IHSI (Institut Haitien de Statistique et d'Informatique), Direction des Statistiques Démographiques et Sociales, Ministère de l'Economie et des Finances, République d'Haïti. Population totale, population de 18 ans et plus, Ménages et densités estimés en 2015. Port-au-Prince, Haiti; 2015 Mar p. 129. Available: [http://ihsi.ht/pdf/projection/Estimat\\_PopTotal\\_18ans\\_Menag2015.pdf](http://ihsi.ht/pdf/projection/Estimat_PopTotal_18ans_Menag2015.pdf)
45. Koski-Karell V, Farmer PE, Isaac B, Campa EM, Viaud L, Namphy PC, et al. Haiti's progress in achieving its 10-year plan to eliminate cholera: hidden sickness cannot be cured. *Risk Manag Healthc Policy*. 2016;9: 87–100. doi:10.2147/RMHP.S75919
46. Centers for Disease Control and Prevention (CDC). Laboratory Methods for the Diagnosis of Epidemic Dysentery and Cholera. Atlanta, Georgia: Centers for Disease Control and Prevention (CDC); 1999 p. 108. Available: <http://www.cdc.gov/cholera/pdf/Laboratory-Methods-for-the-Diagnosis-of-Epidemic-Dysentery-and-Cholera.pdf>
47. Steenland MW, Joseph GA, Lucien MAB, Freeman N, Hast M, Nygren BL, et al. Laboratory-Confirmed Cholera and Rotavirus among Patients with Acute Diarrhea in Four Hospitals in Haiti, 2012–2013. *Am J Trop Med Hyg*. 2013;89: 641–646. doi:10.4269/ajtmh.13-0307
48. Poncelet JL. Cholera in Haiti: successes and challenges in a low income country. *Wkly Epidemiol Rec*. 2015;90: 542–544.
49. Reveiz L, Chapman E, Ramon-Pardo P, Koehlmoos TP, Cuervo LG, Aldighieri S, et al. Chemoprophylaxis in Contacts of Patients with Cholera: Systematic Review and Meta-Analysis. *PLoS ONE*. 2011;6. doi:10.1371/journal.pone.0027060

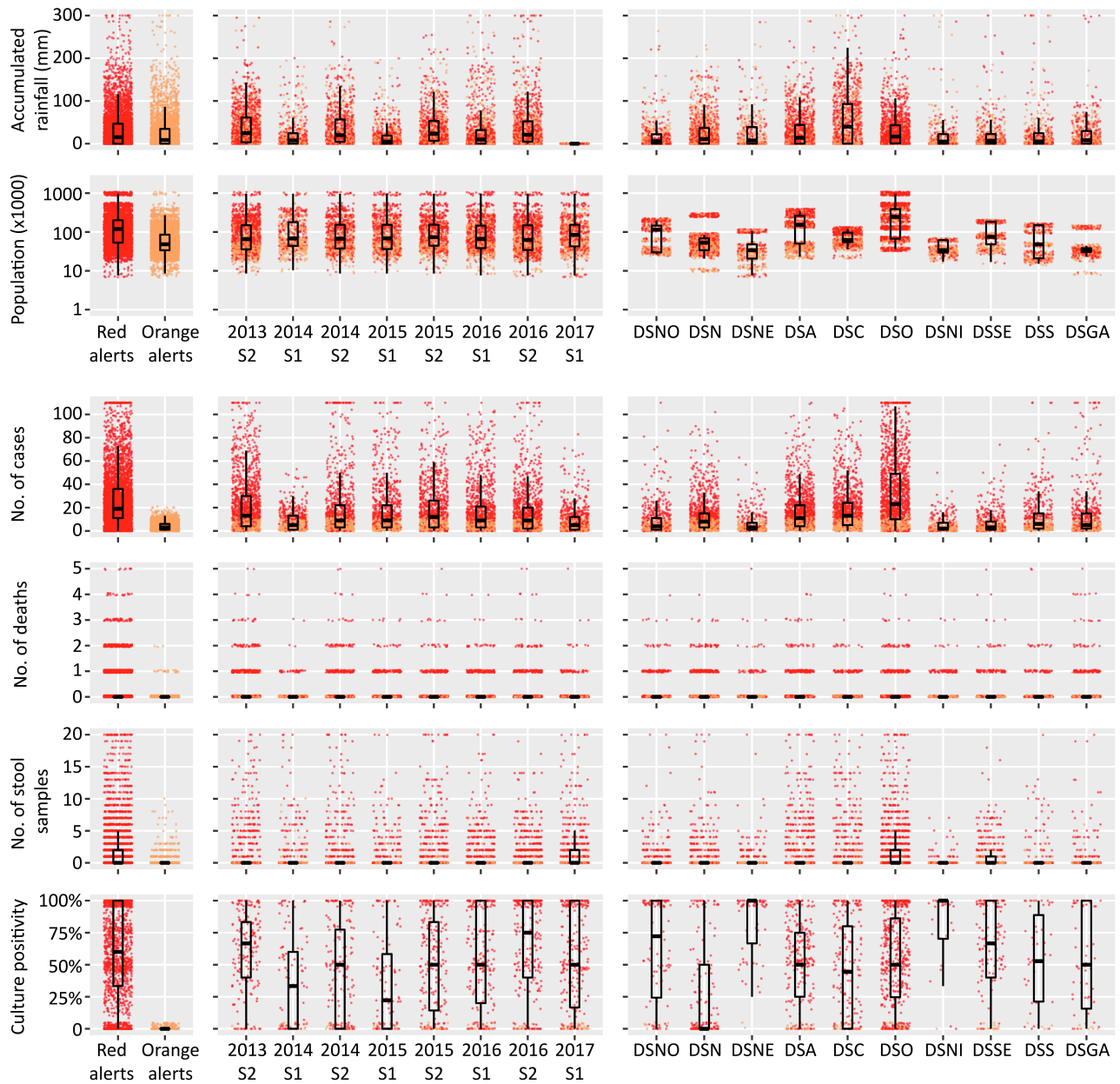
50. Grandesso F. The use of doxycycline to prevent cholera. Twentieth Scientific Day of Epicentre; 2016 Jun 2; Paris, France.
51. Waniez P, Université de Bordeaux. Philcarto. [cited 22 Apr 2015]. Available: <http://philcarto.free.fr/>
52. Berridge DM, Crouchley R. Multivariate Generalized Linear Mixed Models Using R. 1 edition. Boca Raton, FL: CRC Press; 2011.
53. Wickham H. ggplot2: Elegant Graphics for Data Analysis. 2nd ed. 2016 edition. New York, NY: Springer; 2016.
54. Bates D, Mächler M, Bolker B, Walker S. Fitting Linear Mixed-Effects Models Using lme4. *J Stat Softw.* 2015;67: 1–48. doi:10.18637/jss.v067.i01
55. Staples JE, Fischer M. Chikungunya Virus in the Americas — What a Vectorborne Pathogen Can Do. *N Engl J Med.* 2014;371: 887–889. doi:10.1056/NEJMp1407698
56. Azman AS, Rudolph KE, Cummings DAT, Lessler J. The incubation period of cholera: A systematic review. *J Infect.* 2013;66: 432–8. doi:10.1016/j.jinf.2012.11.013
57. Beau De Rochars VEM, Tipret J, Patrick M, Jacobson L, Barbour KE, Berendes D, et al. Knowledge, attitudes, and practices related to treatment and prevention of cholera, Haiti, 2010. *Emerg Infect Dis.* 2011;17: 2158–2161.
58. Lantagne D, Bastable A, Mintz E. Innovative WASH interventions to prevent cholera. *Wkly Epidemiol Rec.* 2015;90: 534–537.
59. Ivers LC. Eliminating Cholera Transmission in Haiti. *N Engl J Med.* 2017;376: 101–103. doi:10.1056/NEJMp1614104
60. Bertuzzo E, Finger F, Mari L, Gatto M, Rinaldo A. On the probability of extinction of the Haiti cholera epidemic. *Stoch Environ Res Risk Assess.* 2014; 1–13. doi:10.1007/s00477-014-0906-3
61. OCHA. Mid-Year Review of the Humanitarian Action Plan for Haiti 2013. 2013. Available: <http://www.unocha.org/cap/appeals/mid-year-review-humanitarian-action-plan-haiti-2013>
62. OCHA. Humanitarian Action Plan for Haiti 2014. 2014. Available: <http://www.unocha.org/cap/appeals/humanitarian-action-plan-haiti-2014>
63. République d’Haïti, Ministère de la Santé Publique et de la Population, Direction Nationale de l’Eau Potable et de l’Assainissement. Plan national d’élimination du choléra. Développement du moyen terme. Juillet 2016 - Décembre 2018. République d’Haïti; 2016.
64. United Nations. UN News - General Assembly calls on Member States to support new UN approach to cholera in Haiti. In: UN News Centre. 16 Dec 2016. Available: <http://www.un.org/apps/news/story.asp?NewsID=55817#.WFaNb5Ipf0E>

## Supplementary data

Supplementary Figure S1 – Organization of cholera surveillance in Haiti.



**Supplementary Figure S2 – Characteristics of retrospectively identified *red* and *orange* alerts from July 2013 to June 2017: difference between alert levels, evolution along the eight semesters of the study period, and difference between departments.** Dots show the characteristics of each *red* or *orange* alert. Boxplots show the median, interquartile range (IQR) and whiskers (1.5\*IQR) of alert characteristics. DSNO, Nord-Ouest department; DSN, Nord; DSNE, Nord-Est; DSA, Artibonite; DSC, Centre; DSO, Ouest; DSNi, Nippes; DSSE, Sud-Est; DSS, Sud; DSGA, Grand'Anse department.





## Supplementary Table S1 – Main actors involved in community response to cholera alerts and main areas of activity.

Acronym	Name of organization	Zone of activity
Haitian governmental response teams:		
EMIRA	MSPS departmental rapid response mobile teams	Every department since 2014
WaSH (Water Sanitation and Hygiene promotion) non-governmental organizations:		
ACF* <sup>§</sup>	Action Against Hunger	DSA and DSNO since 2013
ACTED* <sup>§</sup>		DSS since 2013, DSGA, DSA and DSO since 2014, DSC since 2016
Care* <sup>§</sup>		DSGA in 2013
FONDEFH* <sup>§</sup>	<i>Fondation pour le développement et l'encadrement de la famille haïtienne</i>	DSN and DSNE in 2013
FRC* <sup>§</sup>	French Red Cross, works with Haitian Red Cross	DSO since 2013, DSA in 2015-2016
IFRC* <sup>§</sup>	International Federation of Red Cross and Red Crescent, works with Haitian Red Cross	DSO since 2017
Oxfam* <sup>§</sup>	Worked with OSAPO ( <i>Oganizasyon Sante Popilè</i> ) in 2013	DSN and DSNE since 2013, DSC since 2015
PLAN* <sup>§</sup>	Plan International	DSSE in 2013
RCG*	Red Cross Germany, works with Haitian Red Cross	DSO in 2013
SI* <sup>§</sup>	Solidarités International	DSNi since 2013, DSSE and DSO since 2014
SRC*	Swiss Red Cross	DSO in 2013
UNOPS*	United Nations Office for Project Services	DSS in 2013, DSO in 2014
ZL* <sup>§</sup>	Zanmi Lasante	DSC (part of the response strategy in 2013-2014)
Health organizations		
GHEKIO <sup>§</sup>		Port-au-Prince Metropolitan Area in 2013-2014
IMC	International Medical Corps	DSN and DSNE since 2014
IOM	International Organization for Migration	DSO and DSA since 2014, DSSE in 2013
MDM	<i>Médecins du Monde</i> consortium (Belgium, France, Spain sections)	DSGA, DSNi and DSO since 2013, DSS, DSA and DSNO since 2014
MSF-H	<i>Médecins sans Frontières</i> – Netherlands	Entire country since 2010
Governmental entities		
DELR <sup>§</sup>	MSPS Directorate for Epidemiology Laboratory and Research ( <i>Direction d'Épidémiologie de Laboratoire et de Recherche</i> )	
DINEPA* <sup>§</sup>	National Directorate for Water and Sanitation ( <i>Direction Nationale de l'Eau Potable et de l'Assainissement</i> )	
LNSP <sup>§</sup>	National Laboratory of Public Health ( <i>Laboratoire National de Santé Publique</i> )	
MSPP <sup>§</sup>	Haitian Ministry for Public Health and Population ( <i>Ministère de la Santé Publique et de la Population</i> )	
Foreign or international agencies, and donors		
APHM <sup>§</sup>	<i>Assistance Publique – Hôpitaux de Marseille</i> , Aix-Marseille Univ, France	
CDC	Centers for Disease Control and Prevention	
ECHO	European Commission Humanitarian Office	
PAHO	Pan American Health Organization	
UNICEF	United Nations Children's Fund	
WB	World Bank	
DFID	UK Government's Department for International Development	
CERF	Central Emergency Response Funds of United Nations	

\* organizations which interventions were included in the study

§ organizations which received UNICEF funds through the alert-response strategy

DSA, Artibonite department; DSC, Centre; DSGA, Grand'Anse; DSNi, Nippes; DSN, Nord; DSNE, Nord-Est; DSNO, Nord-Ouest; DSO, Ouest; DSS, Sud; and DSSE, Sud-Est department.

**Supplementary Table S2 – Databases used in the study**

Database	Rows unit	Main variables of interest	Spatial scale	Time scale	Begin Date	End date	Database constitution	Data sources	Cleaning of data	Availability of database	Main potential sources of bias	Efforts to address potential sources of bias
National cholera institutional database	Cholera treatment institutions	Eight variables: cumulated number of suspected cholera cases seen in treatment institutions or hospitalized, deaths in treatment institution and deaths in the community; each variable available for < 5 years and ≥ 5 years of age	Communes	Days	10/18/2010	ongoing	DELR	Cholera treatment institutions via departmental health directorates	Day to day prospective cleaning and quality-control using field information. Missing data for open institutions were set to zero	Upon approval by Haiti MSPP	Under-reporting, especially of community cholera cases and deaths. Low specificity of clinical definition	Prospective efforts to improve the sensitivity of the surveillance system. Promotion of stool sample <i>V. cholerae</i> cultures
Cholera treatment institution databases	Cholera treatment institutions	Institution opening and closing	Communes	Weeks	07/30/2012	Ongoing	Authors	Departmental health directorates, DELR, field investigations		Upon approval by Haiti MSPP	Misreporting of institutions opening and closing	Regular prospective field investigations
LNSP database	Stool samples	Date and place of sampling, date of sample reception by LNSP, result of <i>V. cholerae</i> O1 culture	Communes	Days	10/19/2010	Ongoing	LNSP	LNSP	No need	Upon approval by Haiti MSPP	No systematic stool sampling for <i>V. cholerae</i> culture. Decreased sensitivity if suboptimal transport conditions of samples	Prospective efforts to improve the exhaustiveness and quality of the cholera bacteriological surveillance system
Alert bulletin database	Cholera bulletins	Date of alert identification, date of bulletin diffusion, name of communes in alert	Communes	Days	07/01/2013	Ongoing	Authors	DELR	No need	Upon approval by Haiti MSPP	No	

Intervention database	Field interventions	Names of mobile teams, place and date of intervention, conclusion of investigation, number of households decontaminated, number of people targeted by awareness campaigns, number of people receiving water treatment products, number of water chlorination points	Communes, communal sections, localities	Days	07/01/2013	Ongoing	UNICEF-Haiti	Response partners	Regular prospective cleaning and quality-control using field information. Missing data was set to zero	Upon approval by UNICEF-Haiti	Underreporting and misreporting of response interventions	Regular field investigations
Commune characteristic database	Communes	Coordinates, total population estimated in 2015, urban population estimated in 2015, coastal location, date of past OCV campaign	Communes	NA	NA	NA	Authors	IHSI*, MSPP	No need	Upon approval by corresponding author	Poor population estimates (no census since 2003)	
Country and communal accumulated rainfall	Haiti and communes	Satellite-estimated daily accumulated rainfall	Communes	Days	09/01/2010	Ongoing	Authors	NASA websites <sup>\$</sup>	No need	Open source	Satellite remote sensing and modelling with a 0.25 degree resolution. No detection of potentially heavy local rainfall	

---

DELR, Directorate of Epidemiology Laboratory and Research (MSPP); LNSP, National Laboratory of Public Health (MSPP); MSPP, Haiti Ministry of Public Health and Population; IHSI, Haitian Institute of Statistics and Informatics; NASA, US National Aeronautics and Space Administration; OCV, oral cholera vaccine

\* [http://www.ihsi.ht/pdf/projection/Estimat\\_PopTotal\\_18ans\\_Menag2015.pdf](http://www.ihsi.ht/pdf/projection/Estimat_PopTotal_18ans_Menag2015.pdf) (accessed 26 January 2018)

\$ <http://giovanni.gsfc.nasa.gov/giovanni/> (accessed 26 January, 2018)