



HAL
open science

Analysis of the IPCC AR5 transformation pathways with a new compact Earth system model

Yann Quilcaille, T. Gasser, Philippe Ciais, F. Lecocq, G Peters

► **To cite this version:**

Yann Quilcaille, T. Gasser, Philippe Ciais, F. Lecocq, G Peters. Analysis of the IPCC AR5 transformation pathways with a new compact Earth system model. 1.5 degrees: meeting the challenges of the Paris Agreement, Sep 2016, Oxford, United Kingdom. . hal-01692660

HAL Id: hal-01692660

<https://hal.science/hal-01692660>

Submitted on 25 Jan 2018

HAL is a multi-disciplinary open access archive for the deposit and dissemination of scientific research documents, whether they are published or not. The documents may come from teaching and research institutions in France or abroad, or from public or private research centers.

L'archive ouverte pluridisciplinaire **HAL**, est destinée au dépôt et à la diffusion de documents scientifiques de niveau recherche, publiés ou non, émanant des établissements d'enseignement et de recherche français ou étrangers, des laboratoires publics ou privés.

Analysis of the IPCC AR5 transformation pathways with a new compact Earth system model



Y. QUILCAILLE^{1,2}, T. GASSER^{1,3}, P. CIAIS¹, F. LECOCQ² and G. PETERS³

¹ Laboratoire des Sciences du Climat et de l'Environnement, Gif-sur-Yvette, France

² Centre International de Recherche sur l'Environnement et le Développement, Nogent-sur-Marne, France

³ Center for International Climate and Environmental Research, Oslo, Norway

Email: yann.quilcaille@lsce.ipsl.fr

1 Introduction

The climate impacts of all transformation pathways from IPCC AR5WG3 (AR5 WG3 Ch.6) were estimated with a single model named MAGICC. It was shown to produce consistent climate projections when concentration-driven (AR5 WG1 Ch. 12). However, its carbon-cycle - and therefore its ability to be emission-driven - was shown to be slightly biased (AR5 WG1 Ch. 6). A large fraction of non-CO₂ forcings - as expected in low-carbon scenarios- also makes its projections span a narrower range than that of complex models (AR5 WG1 Ch. 12).

Here, we use OSCAR 2.2, a new reduced-form Earth system model to analyze the AR5 WG3 transformation pathways. **Our analysis aims at detecting and understanding the cause of any systematic bias induced by using only one reduced-form model.** Ultimately, the use of two compact Earth system models, instead of a single one, will help the analysis of socio-economic scenarios to gain in reliability, and will therefore improve the next IPCC special report on the 1.5C target.

2 Material: scenarios of emission

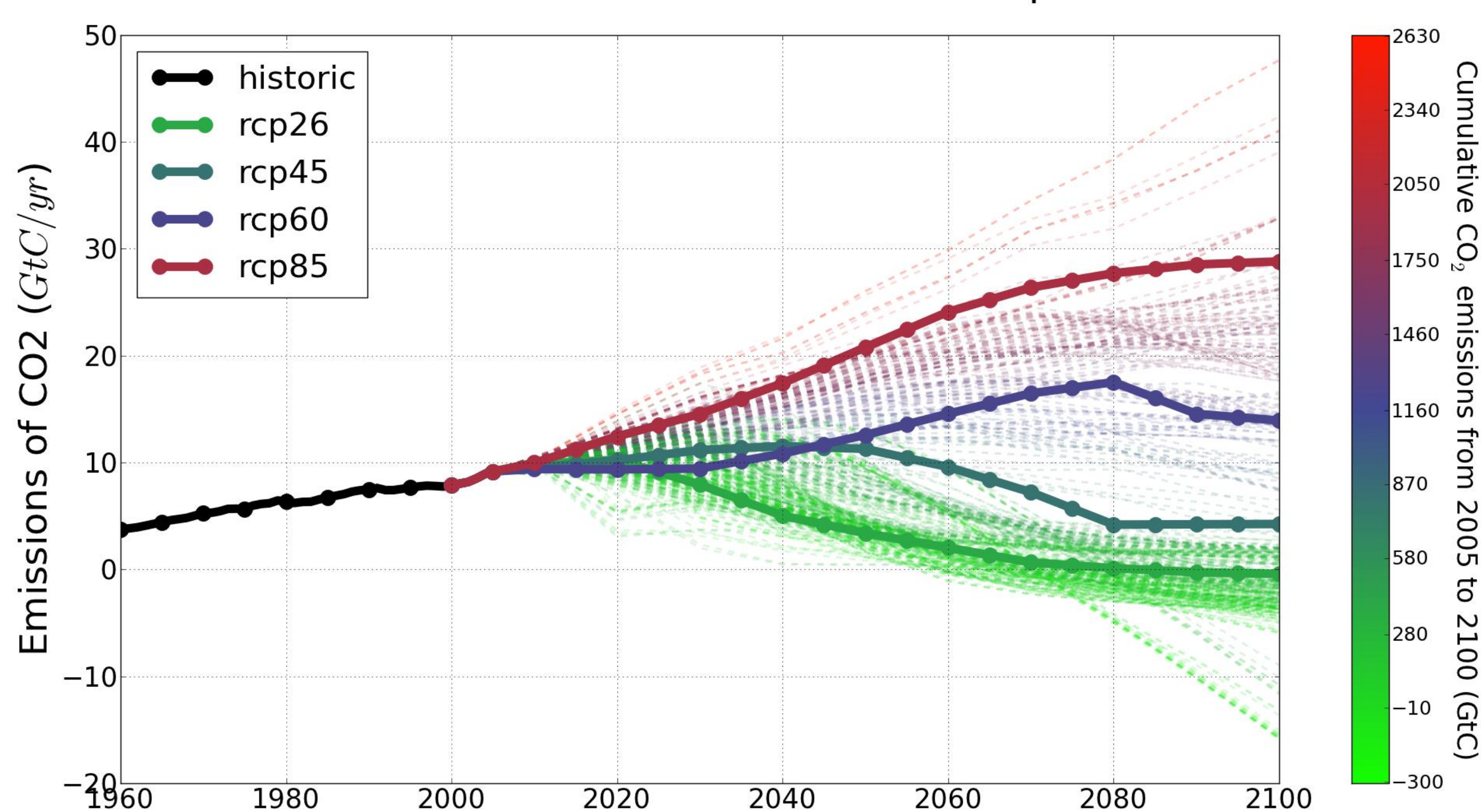
We use the database from AR5WG3, starting in 2005. We reproduce the same treatment as described in Annex II.10 AR5WG3 and Schaeffer et al (2015):

- Selection of scenarios: if CO₂ from Fossil Fuels & Industry, CH₄, N₂O are provided
- Completion of missing gases
 - CO₂ from Land Use: mean of RCP used
 - SO_x: relation with the SO_x/CO₂ from the baseline of the scenario
 - Other gas: "central model" or interpolation on RCP
- Rescale on RCP emissions, with the factor decreasing to 1 in 2050

Treatment added:

- Estimates are based on the global totals, and not the regional totals
- Decomposition of F-Gases into all HFC, PFC, ODS according to the mean of RCP
- Land Use from the RCP having the closest CO₂ emissions from Land Use

Scenarios for Emissions|CO₂

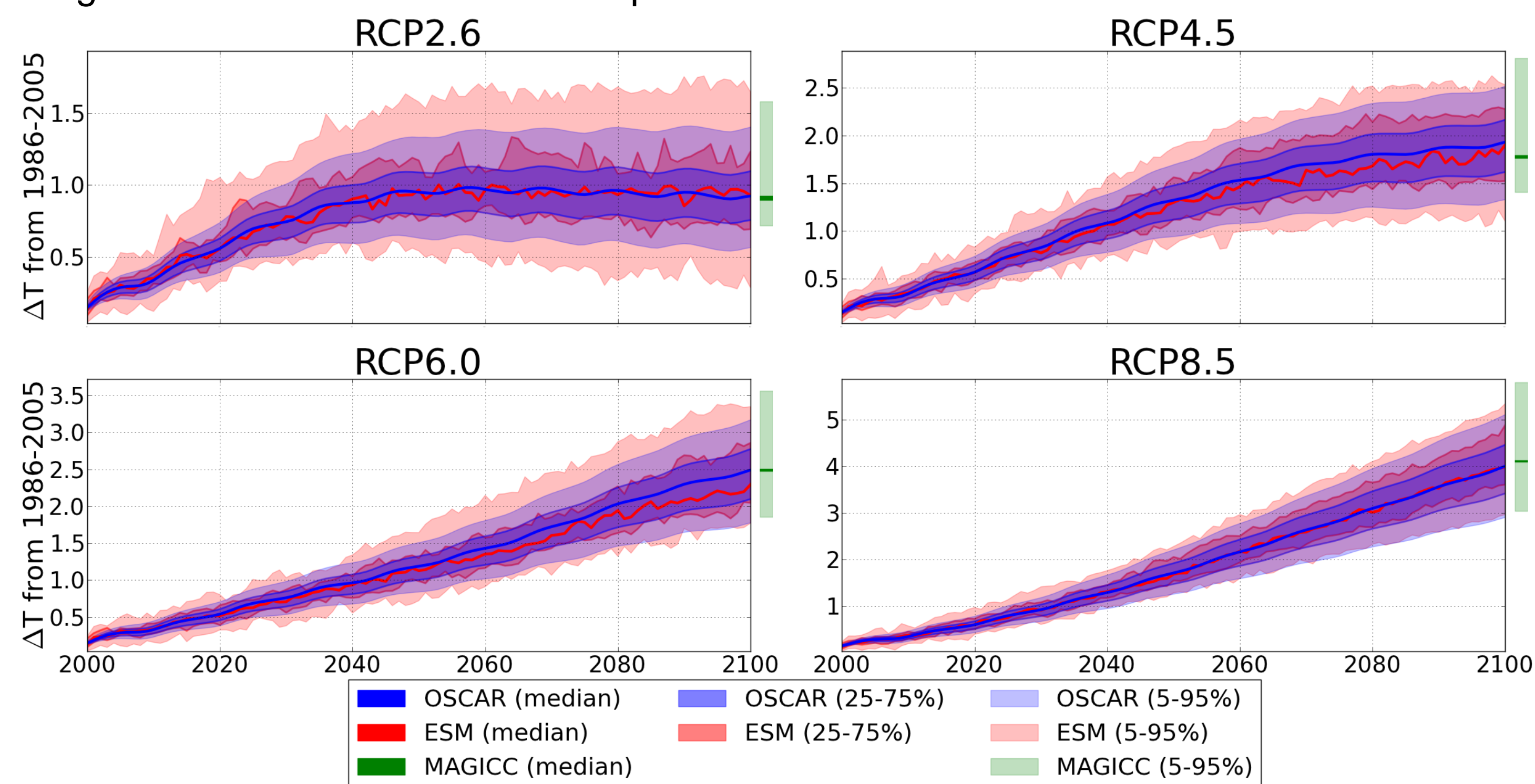


3 Material: OSCAR v2.2

OSCAR v2.2 is an Earth system model of reduced complexity [Gasser et al., 2016 ; Li et al., 2016]:

- Calibrated on the latest intercomparison exercises (CMIP5, TRENDY, ACCMIP, CCMVal2, WETCHIMP) and on more complex models like ESM.
- Advanced carbon-cycle representation
- Emulates the complete range of results in non-CO₂ modeling by complex models
- Exchanges the spatial & temporal resolution for more interactions and feedbacks

OSCAR v2.2 allows to combine the sensitivities of different more complex models across its modules, thus to reproduce the uncertainty in climate change induced by the range of models. Below is an example of OSCAR v2.2 when emissions driven.



4 Method

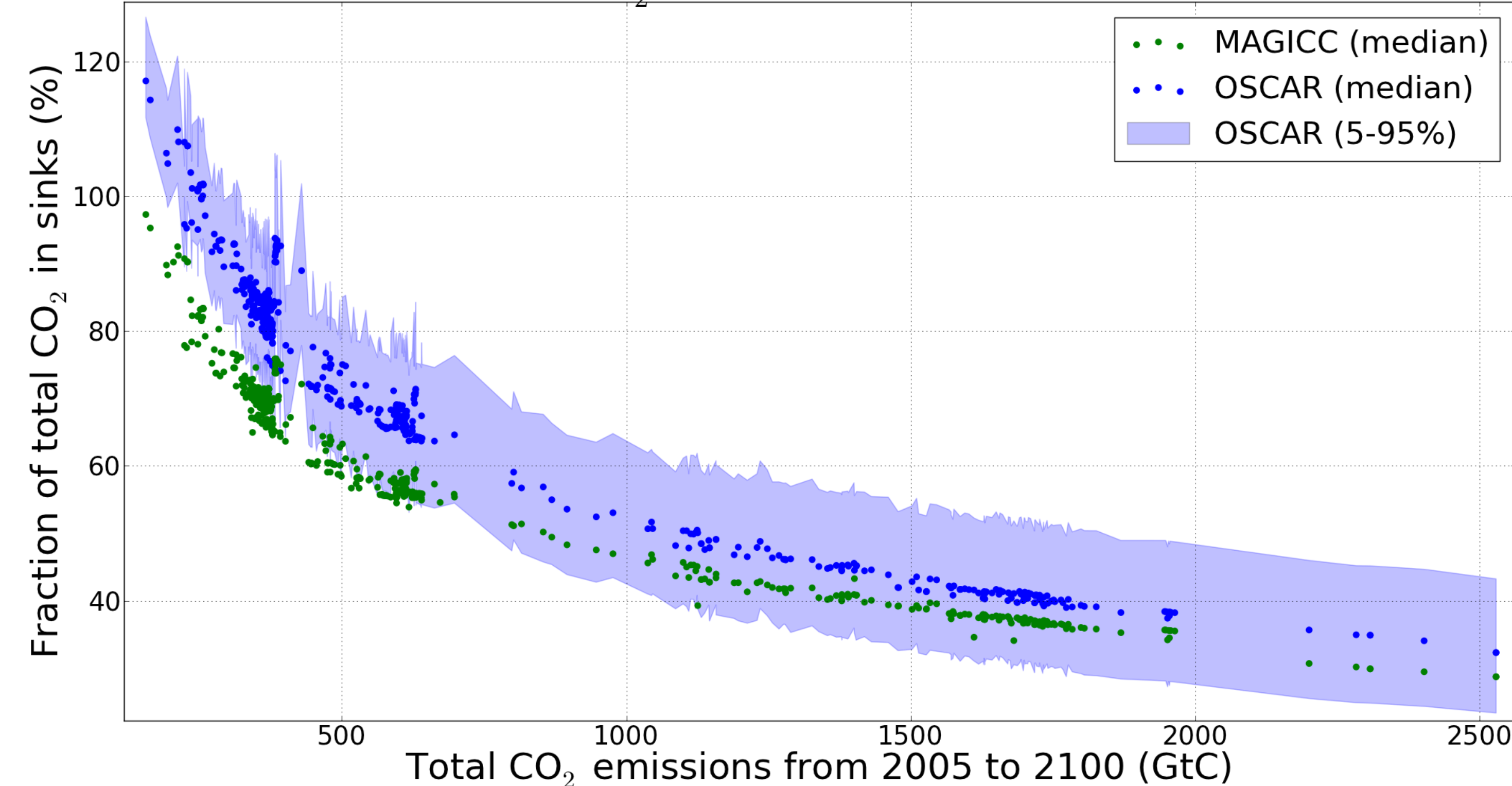
- **1700-2005** → Monte-Carlo analysis with equiprobability for all parameters of OSCAR. Selection of 100 configurations among 3000 under constraints :
 - ΔCO₂, ΔN₂O, ΔCH₄ from 1990-2000 to 1755-1765
 - ΔT from 1990-1999 to 1880-1909
- **2005-2100** → For the 523 scenarios with sufficient data, simulation for all constrained configurations
- Comparison of distributions

5 Different carbon cycles: overview

To evaluate the differences between the carbon cycles of MAGICC and OSCAR, we compute the total CO₂ sink for all scenarios using:

$$\alpha_{CO_2} \frac{d[CO_2]}{dt} = E_{CO_2}^{Fos.Fuels \& Ind.} + E_{CO_2}^{Land Use} + F_{CO_2}^{ocean} + F_{CO_2}^{land}$$

Fractions of CO₂ in sinks for OSCAR and MAGICC



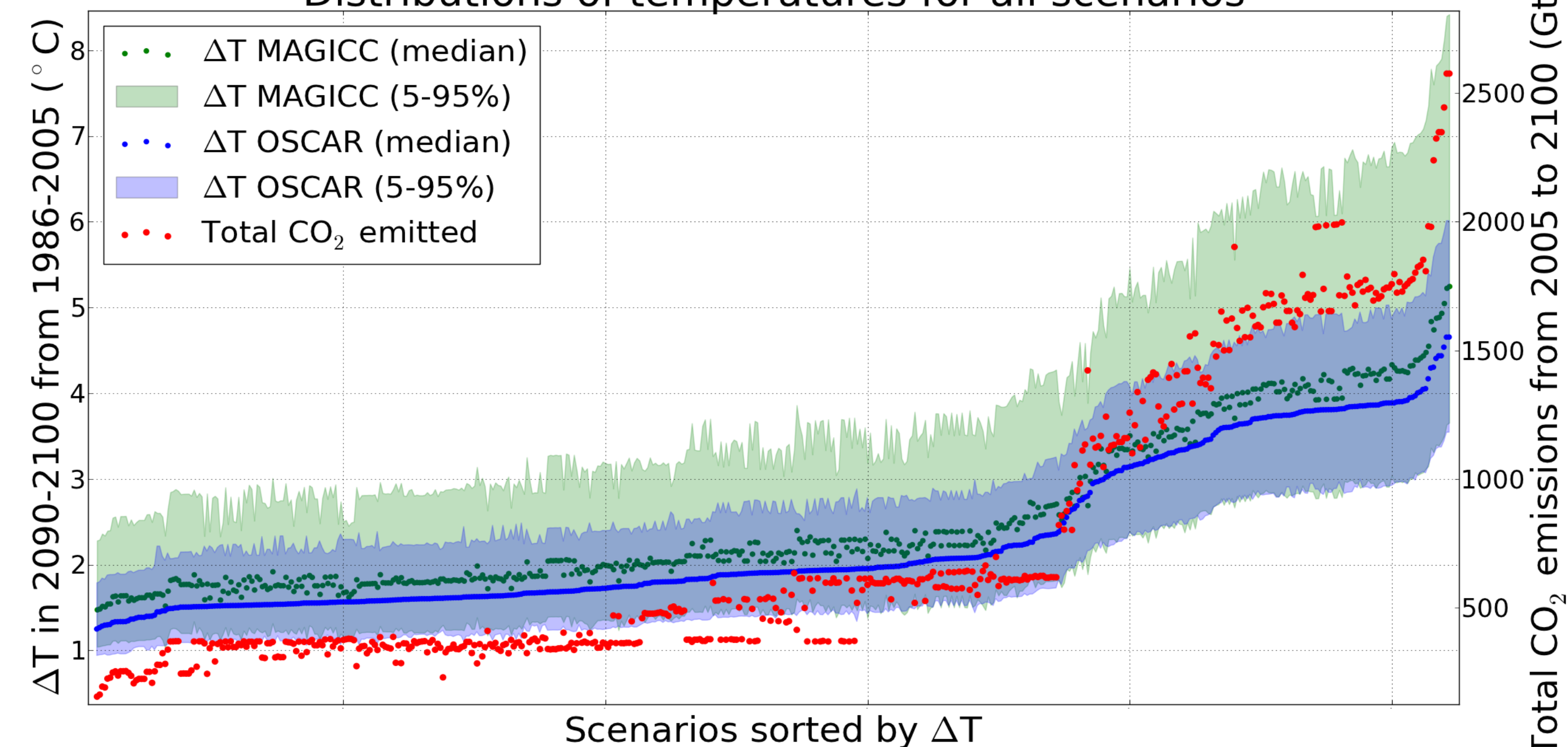
The bias in the carbon cycle seems relatively independent of total CO₂ from scenarios.

6 Impact on temperatures

The evaluation of the range from non-CO₂ forcings require more data on the distribution of forcings of MAGICC. However, the distributions of temperatures in 2090-2100 show :

- in the median: a bias almost independent from CO₂ emissions
- in the upper range: a bias increasing with CO₂ emissions

Distributions of temperatures for all scenarios



7 Conclusion

This is a work in progress. Nevertheless, we have shown that:

- OSCAR v2.2 reproduces the produced uncertainty in climate change by ESM, even when emissions-driven.
- MAGICC CO₂ sinks are not as efficient than those of OSCAR. Further information are required to evaluate which sink and in which conditions.
- MAGICC seems to have non-CO₂ forcings spanning a range wider than OSCAR

The study of the climate impacts of transformation pathways should rely on more than a single reduced-form ESM, especially when considering 1.5°C or 2°C targets.

8 References

- Ciais P. et al. (2013) "Carbon and Other Biogeochemical Cycles" in: "Climate Change 2013: The Physical Science Basis. Contribution of Working Group I to the Fifth Assessment Report of the Intergovernmental Panel on Climate Change". Cambridge University Press.
- Clarke L. et al. (2014) "Assessing Transformation Pathways" in: "Climate Change 2014: Mitigation of Climate Change. Contribution of Working Group III to the Fifth Assessment Report of the Intergovernmental Panel on Climate Change". Cambridge University Press.
- Collins M. et al. (2013) "Long-term Climate Change: Projections, Commitments and Irreversibility" in: "Climate Change 2013: The Physical Science Basis. Contribution of Working Group I to the Fifth Assessment Report of the Intergovernmental Panel on Climate Change". Cambridge University Press
- Gasser T. (2014) "Attribution régionalisée des causes anthropiques du changement climatique." PhD thesis at UPMC.
- Gasser T. et al (2016) "The compact earth system model OSCAR v2.2: description and first results" G.M.D..
- Li B. et al (2016) "The contribution of China's emissions to global climate forcing" Nature.
- Schaeffer M. et al. (2015) "Mid- and long-term climate projections for fragmented and delayed-action scenarios." Technological Forecasting and Social Change.