



HAL
open science

Activation of TREK-1 by morphine results in analgesia without adverse side effects

Maily Devilliers, Jérôme Busserolles, Stéphane Lolignier, Emmanuel Deval, Vanessa Pereira, Abdelkrim Alloui, Marine Christin, Bruno Mazet, Patrick Delmas, Jacques Noel, et al.

► **To cite this version:**

Maily Devilliers, Jérôme Busserolles, Stéphane Lolignier, Emmanuel Deval, Vanessa Pereira, et al.. Activation of TREK-1 by morphine results in analgesia without adverse side effects. *Nature Communications*, 2013, 4, 10.1038/ncomms3941 . hal-01689367

HAL Id: hal-01689367

<https://hal.science/hal-01689367v1>

Submitted on 9 Jan 2020

HAL is a multi-disciplinary open access archive for the deposit and dissemination of scientific research documents, whether they are published or not. The documents may come from teaching and research institutions in France or abroad, or from public or private research centers.

L'archive ouverte pluridisciplinaire **HAL**, est destinée au dépôt et à la diffusion de documents scientifiques de niveau recherche, publiés ou non, émanant des établissements d'enseignement et de recherche français ou étrangers, des laboratoires publics ou privés.

ARTICLE

Received 20 Sep 2013 | Accepted 15 Nov 2013 | Published 17 Dec 2013

DOI: 10.1038/ncomms3941

Activation of TREK-1 by morphine results in analgesia without adverse side effects

Maïly Devilliers^{1,2,*}, Jérôme Busserolles^{1,2,*}, Stéphane Lolignier^{1,2}, Emmanuel Deval^{3,4,5}, Vanessa Pereira^{1,2}, Abdelkrim Alloui^{1,2}, Marine Christin^{3,4,5}, Bruno Mazet⁶, Patrick Delmas⁶, Jacques Noel^{3,4,5}, Michel Lazdunski^{3,4} & Alain Eschalier^{1,2,7}

Morphine is the gold-standard pain reliever for severe acute or chronic pain but it also produces adverse side effects that can alter the quality of life of patients and, in some rare cases, jeopardize the vital prognosis. Morphine elicits both therapeutic and adverse effects primarily through the same μ opioid receptor subtype, which makes it difficult to separate the two types of effects. Here we show that beneficial and deleterious effects of morphine are mediated through different signalling pathways downstream from μ opioid receptor. We demonstrate that the TREK-1 K^+ channel is a crucial contributor of morphine-induced analgesia in mice, while it is not involved in morphine-induced constipation, respiratory depression and dependence—three main adverse effects of opioid analgesic therapy. These observations suggest that direct activation of the TREK-1 K^+ channel, acting downstream from the μ opioid receptor, might have strong analgesic effects without opioid-like adverse effects.

¹ Clermont Université, Université d'Auvergne, Pharmacologie fondamentale et clinique de la douleur, 63000 Clermont-Ferrand, France. ² Inserm, U 1107, Neuro-Dol, 63000 Clermont-Ferrand, France. ³ Université de Nice Sophia Antipolis, 06560 Valbonne, France. ⁴ CNRS, Institut de Pharmacologie Moléculaire et Cellulaire, UMR 7275, 660 Route des Lucioles Sophia Antipolis, 06560 Valbonne, France. ⁵ LabEx Ion Channel Science and Therapeutics, 06560 Valbonne, France. ⁶ Aix Marseille Université, CNRS, CRN2M UMR 7286, 13344 cedex 15, Marseille, France. ⁷ CHU Clermont-Ferrand, Service de pharmacologie, F-63003 Clermont-Ferrand, France. * These authors contributed equally to this work. Correspondence and requests for materials should be addressed to M.L. (email: lazdunski@ipmc.cnrs.fr) or to A.E. (email: alain.eschalier@udamail.fr).

Most opioid analgesic drugs, such as morphine, modulate nociception by stimulating the G-protein-coupled μ opioid receptors (μ ORs), the major molecular gate for opioid analgesia¹. It is well documented that neither the analgesic nor adverse pharmacological activities of morphine can be detected in mutant mice lacking μ OR². This explains the difficulty in separating the beneficial and adverse effects of μ OR agonists. Pharmacological studies have long suggested the existence of different subtypes of μ OR, and the possibility of dissociating analgesia from several opioid adverse effects^{3–5}, yet without success. Recently, truncated μ OR splice variants⁶ have also been proposed as targets to improve benefit/risk ratio of opiate analgesics⁷. Several other strategies have been developed to try to reduce opioids' adverse effects, such as the use of either agonists of other opioid receptors^{8,9} or peripheral μ OR antagonists (for example, methylnaltrexone¹⁰ and alvimopan¹¹). However, the former ones produce a limited analgesia¹² and the latter ones need to be co-prescribed with opioids and prevent constipation but not morphine central adverse effects such as respiratory depression¹³. Alternatively, a better comprehension of signalling pathways and downstream effectors from μ OR that are potentially involved in opiates' analgesic effects would facilitate finding new targets for analgesic compounds with higher benefit/risk ratio. Although not completely understood, binding of morphine to μ OR results in the activation of a $G_{i/o}$ protein, inhibition of adenylate cyclase and activation of phospholipase C, and consequently, inhibition of voltage-dependent Ca^{2+} channels as well as activation of K^+ channels¹⁴. G protein-activated inwardly rectifying K^+ (GIRK) channels were considered as prominent K^+ channels in opioid-induced analgesia¹⁵. However, studies using the GIRK-channel inhibitor tertiapine¹⁶, or GIRK knockout (KO) mice^{16,17}, demonstrated only a partial role for these channels in the antinociceptive effect mediated by high doses of morphine.

The TREK-1 channel is a member of the two-pore domain K^+ (K_{2P}) channel family with background activity¹⁸. It is expressed in sensory neurons, particularly in nociceptors¹⁹, and is also broadly distributed in the central nervous system¹⁸. We have previously demonstrated the role of this channel in polymodal pain perception^{19,20}. Moreover, recent data have shown an enhancement of TREK-1 activity in response to the activation of $G_{\alpha i}$ -coupled receptors^{21,22}. Consequently, we evaluated the implication of the TREK-1 channel in the antinociceptive effect and in the main adverse effects of morphine using TREK-1 KO mice and their wild-type littermates.

In this study, we show the major involvement of the TREK-1 channel as an effector of μ OR in the analgesic effect of morphine. Interestingly, we also observe that this channel is not involved in usual adverse effects of morphine such as constipation, respiratory depression and dependence. These observations suggest that direct activation of the TREK-1 channel, acting downstream from the μ OR, might have strong analgesic effects without opioids-like adverse effects.

Results

The analgesic effect of morphine involves TREK-1. The analgesic effect of morphine was assessed using thermal nociceptive pain tests. First, in accordance with previous results¹⁹, we observed that *TREK-1*^{-/-} mice demonstrated a higher sensitivity as compared with wild-type mice in the tail immersion test at 46 °C (see Supplementary Fig. S1a), whereas no difference was observed in the hot-plate test at 52 °C (see Supplementary Fig. S1b). We then assessed, in naive mice, the involvement of TREK-1 in the antinociceptive effect of morphine by measuring the withdrawal latencies at both temperatures. The

effect of morphine was determined by calculating the variation between pretreatment and post-treatment latencies for each animal. The assessment of the kinetics of the antinociceptive effect of systemic administrations of increasing doses of morphine (1, 3 and 5 mg kg⁻¹, subcutaneous (s.c.)) demonstrated a significant decrease in analgesia in *TREK-1*^{-/-} mice compared with their *TREK-1*^{+/+} littermates in the two tests (areas under the time course curves were decreased: -40.3% and -47.1% in the tail immersion test at 3 and 5 mg kg⁻¹ of morphine, respectively; -66.0% and -59.7% in the hot-plate test, respectively) (Fig. 1a,b right panels). This decrease was confirmed when comparing both scores at the peak effect (Fig. 1a,b left panels) and by another experiment using 1, 3, 5, 10 and 20 mg kg⁻¹ of morphine, in which the mean (\pm s.e.m.) ED50 values in the tail immersion test were 13.3 \pm 1.1 and 9.2 \pm 0.6 mg kg⁻¹ in *TREK-1*^{-/-} mice and their *TREK-1*^{+/+} littermates, respectively ($n=10$ per dose). Furthermore, this study shows a more important contribution of TREK-1 deletion in morphine analgesia for the lowest doses: 55, 58, 35 and 21% for 3, 5, 10 and 20 mg kg⁻¹, respectively (see day 1 scores in Fig. 2b,c). Taken together, these results demonstrate that TREK-1 is a major effector of morphine-induced thermal analgesia. Similarly, there was a strong reduction (-80.0%) in the analgesic activity of fentanyl (0.03 mg kg⁻¹, s.c.), a μ OR selective agonist, in *TREK-1*^{-/-} mice (Supplementary Fig. S2). Interestingly, intrathecally administered tertiapin, a GIRK-channel inhibitor, partially decreased the antinociceptive effect of a high dose of morphine (5 mg kg⁻¹, s.c.) but did not affect the antinociceptive effect of 3 mg kg⁻¹ of morphine (Supplementary Fig. S3).

Since morphine is used to treat severe acute and chronic pain in humans²³, such as postoperative pain and, in some cases, neuropathic pain, we investigated the role of TREK-1 channels in pathological pain models. We tested the antihyperalgesic effect of morphine in a post-surgical pain model induced by a plantar incision of the mouse left hindpaw²⁴ and in a neuropathic pain model following chronic constriction injury by ligation of the left sciatic nerve²⁵. Areas under the time course curves of morphine (3 mg kg⁻¹, s.c.)-induced antihyperalgesia were strongly reduced in *TREK-1*^{-/-} mice compared with *TREK-1*^{+/+} littermates in the paw immersion test at 46 °C, 48 h post surgery (-44.6%) and 14 days after chronic constriction injury (-34.6%) (Fig. 1c,d, respectively). These results clearly demonstrate that TREK-1 is a downstream effector of μ OR involved in morphine-induced analgesia.

Tolerance to morphine is a phenomenon closely linked to its analgesic effect as it corresponds to a reduction of its effect after a prolonged exposure. A prolonged 6-day treatment of two daily injections of high doses of morphine (cumulative dose of 130 mg kg⁻¹, s.c.) (Fig. 2a) significantly decreased the analgesic potency of a single dose of morphine (3, 5, 10 or 20 mg kg⁻¹, s.c.) in *TREK-1*^{+/+} mice (-72.6%, -56.1%, -41.9% and -51.2%, respectively) (Fig. 2b), while this tolerance did not appear in the absence of the channel, in *TREK-1*^{-/-} mice for the dose of 3 mg kg⁻¹ (s.c.) of morphine. In this genotype, a small degree of tolerance was observed at 5 mg kg⁻¹ (s.c.) (-34.8%), while it increased for higher doses (-50.6% and -77.5% for 10 and 20 mg kg⁻¹, s.c., respectively) and became not statistically different from that observed in littermates (Fig. 2c). This is further evidence of an important contribution of the TREK-1 channel to the analgesic effect of morphine, especially at doses up to 5 mg kg⁻¹ (s.c.), which are commonly used to assess the analgesic effect of morphine.

We confirm, using electrophysiology (patch-clamp) technique, that a functional coupling exists between μ OR and the TREK-1 channel. When the two proteins were co-expressed in COS cells, morphine activated the TREK-1 channel (Fig. 3a,b). Moreover,

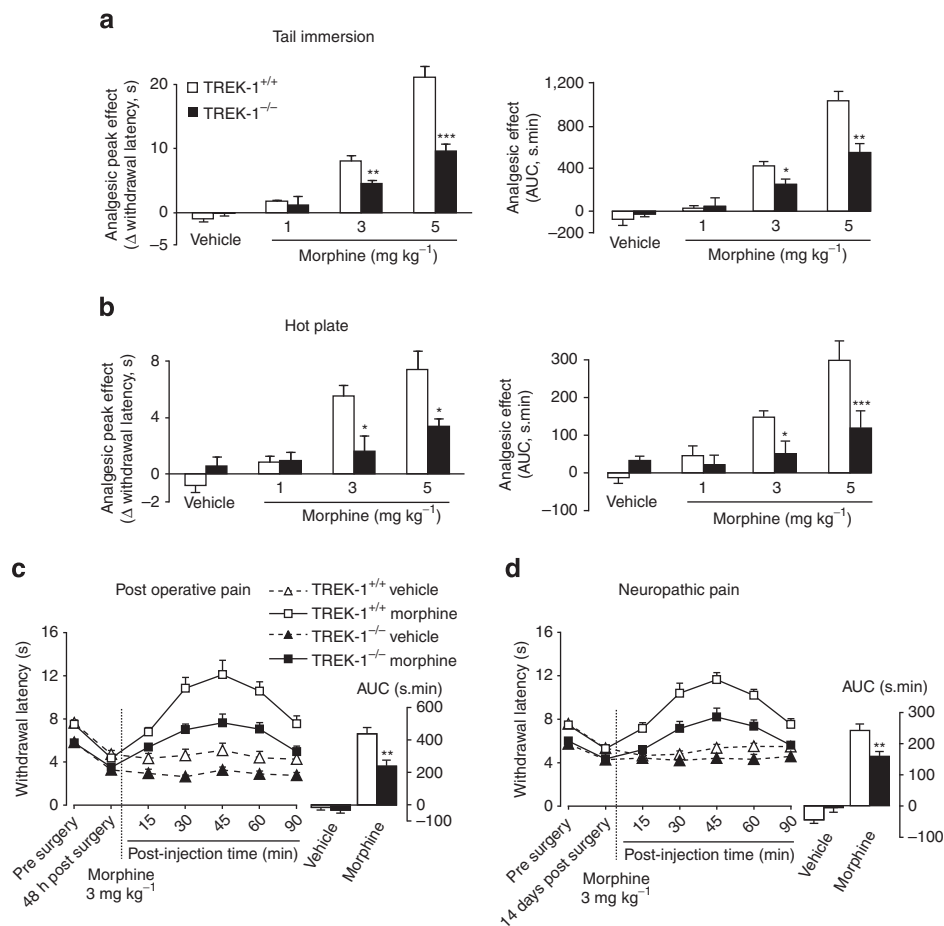


Figure 1 | Involvement of the TREK-1 channel in morphine-induced analgesia. (a,b) Antinociceptive effect of systemic administration of morphine in healthy wild-type and *TREK-1*^{-/-} mice littermates assessed by the tail immersion test (46 °C) (a) or the hot-plate test (52 °C) (b). Mice were injected either with morphine (1, 3 or 5 mg kg⁻¹, s.c.) or saline. Pre- and post- (15, 30, 45, 60 and 90 min after) treatment withdrawal latencies were assessed. For the two parts, (a,b), data are represented, on the right panels, as the mean \pm s.e.m. of the areas under the time course curves (AUC, s.min) of analgesia scores (differences between post- and pretreatment withdrawal latencies) and, on the left panels, as the mean \pm s.e.m. of the peak effect 30 min after injection. $n=8-10$ per dose for each genotype. A significant decrease in systemic morphine-induced analgesia was observed in healthy *TREK-1*^{-/-} mice as compared with *TREK-1*^{+/+} animals. (c,d) Antihyperalgesic effect of systemic administration of morphine in wild-type and *TREK-1*^{-/-} mice assessed by the paw immersion test (46 °C) following induction of a postoperative pain model (plantar skin and muscle incision) (c) or a neuropathic pain model (chronic constriction injury of the sciatic nerve) (d). Baseline latencies were recorded before surgery and the antihyperalgesic effect of morphine was assessed 48 h and 14 days after surgery for postoperative pain and neuropathic pain models, respectively. Mice were injected either with morphine (3 mg kg⁻¹, s.c.) or saline. Pre- and post- (15, 30, 45, 60 and 90 min after) treatment, pain thresholds were assessed. Data for c,d represent mean \pm s.e.m. The inset shows the mean \pm s.e.m. of AUC of analgesia scores (differences between post- and pretreatment withdrawal latencies). $n=8-10$ per dose for each genotype. A significant decrease in morphine-induced antihyperalgesia was observed in *TREK-1*^{-/-} mice as compared with *TREK-1*^{+/+} animals. Statistical analysis was performed using two-way ANOVA followed by Student-Newman-Keuls *post-hoc* test; * $P<0.05$, ** $P<0.01$, *** $P<0.001$, *TREK-1*^{+/+} versus *TREK-1*^{-/-}.

the functional coupling was lost with a serine 333 to aspartic acid mutant of the TREK-1 channel (TREK-1S333D) that mimics phosphorylation of the channel on the regulatory serine 333 by PKA and diminishes basal current²⁶ (Fig. 3c,d). Thus serine 333, the main amino acid of TREK-1 involved in PKA-dependent phosphorylation^{22,27}, appears to be essential for the activation of the channel by morphine.

TREK-1 is not involved in morphine-induced adverse effects. Constipation is the most usual complaint of patients treated with morphine²⁸. We assessed the role of TREK-1 in the effect of morphine on gastrointestinal function by the quantification of fecal *boli* production in mice. To assure that both genotypes eat similarly, food consumption was monitored during 24 h for each

mouse strain and expressed as grams of food ingested. No difference was observed between TREK-1-deficient mice and their wild-type littermates (Supplementary Fig. S4). Morphine (1, 3 and 5 mg kg⁻¹, s.c.) induced a dose-dependent suppression of defecation in both groups of mice with no significant difference concerning the weight of stools collected over the 2-h period following the treatment with morphine (Fig. 4a). To further study the potential role of TREK-1 in the effect of morphine on gastrointestinal transit, we compared small intestinal transit times by following the progression of a methylene blue dye given by oral gavage. Morphine (1, 3 or 5 mg kg⁻¹, s.c.), administered 20 min before methylene blue ingestion, induced a dose-dependent reduction of the gastrointestinal transit (Fig. 4b) with no difference between genotypes, suggesting that TREK-1 does not interfere with the inhibitory effect of morphine on the

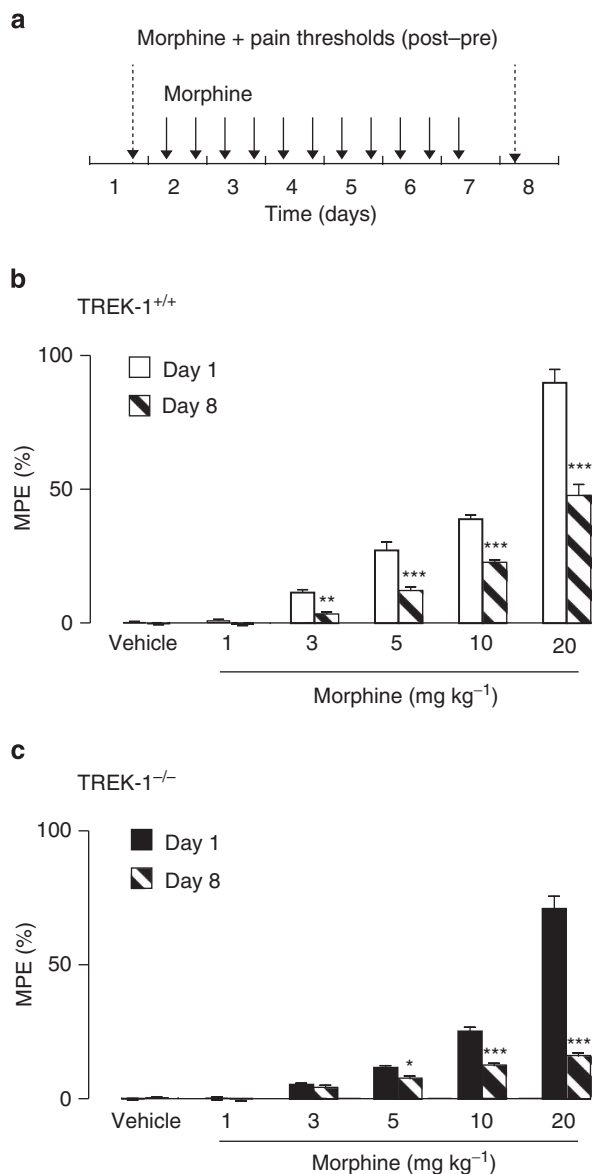


Figure 2 | Involvement of the TREK-1 channel in morphine-induced tolerance to analgesia. Degree of tolerance, represented by the loss of morphine-induced analgesic effect in *TREK-1*^{+/+} and *TREK-1*^{-/-} mice after a 6-day treatment in the tail immersion test (46 °C). Comparison of morphine-induced analgesia (1, 3, 5, 10 or 20 mg kg⁻¹, s.c.) or saline effect before (day 1) and after (day 8) a repeated morphine treatment (10 mg kg⁻¹, s.c., twice a day on days 2–6 and once on day 7) (a) in *TREK-1*^{+/+} mice (b) and in *TREK-1*^{-/-} mice (c). Data are represented as mean ± s.e.m. of percentage of the maximal possible effect (MPE) = 100 × ((test withdrawal latency – baseline latency)/(cutoff – baseline latency)). *n* = 12–13 per dose for each genotype. Statistical analysis was performed using two-way ANOVA followed by Student–Newman–Keuls *post-hoc* test; **P* < 0.05, ***P* < 0.01, ****P* < 0.001, day 1 versus day 8 for (b,c).

motility of the small intestinal portion of the gastrointestinal tract. We next assessed whether morphine differentially affects colonic motility in *TREK-1*^{-/-} mice and *TREK-1*^{+/+} littermates. *Ex vivo* recordings of isolated colon showed similar changes of migrating myoelectric complexes of the colonic muscular wall (Fig. 4c,d) in *TREK-1*^{-/-} and *TREK-1*^{+/+} mice. Indeed, morphine (1 μM) similarly induced a disorganized motor activity in the proximal part of the colon, whereas it totally

inhibited contractile activity in the intermediate and distal colon. Thus, while strongly involved in the analgesic effect of morphine, the TREK-1 channel appears not to be involved in this frequent adverse effect.

Acute respiratory depression is a μOR-dependent adverse effect of morphine, which can have critical consequences as it may lead to death in the most severe cases. We analysed the breathing frequency of *TREK-1*^{-/-} mice and their wild-type littermates using whole-body plethysmography following administration of saline or high doses of morphine. Resting breathing frequency was not different between wild-type and *TREK-1*^{-/-} mice, and both saline and morphine (5 mg kg⁻¹) treatments did not alter breathing frequency in either genotype (Fig. 5). Whatever the genotype, morphine administration at higher doses of 10, 20 or 50 mg kg⁻¹ s.c., largely above analgesic doses, induced a progressive and severe decrease in the respiratory rate (Fig. 5) with the same intensity in the *TREK-1*^{-/-} and *TREK-1*^{+/+} mice, which excludes an involvement of TREK-1 in this adverse effect.

Chronic administration of morphine can also induce dependence with typical withdrawal symptoms when treatment is discontinued²⁹. In humans, several signs such as anxiety, agitation and insomnia are observed. In mice, it is possible to assess this adverse effect through naloxone-precipitated withdrawal syndrome. Mice were injected twice a day for 6 days with high doses of morphine (cumulative dose of 130 mg kg⁻¹, s.c.) and, on day 7, a withdrawal syndrome was induced by a single injection of the non-selective opioid receptor antagonist naloxone (2 mg kg⁻¹, intraperitoneal (i.p.)) (Fig. 6a). No difference was observed between *TREK-1*^{-/-} and *TREK-1*^{+/+} mice in scores of the assessed behavioural symptoms of morphine withdrawal—that is, the number of escape jumps, teeth chattering or paw tremour (Fig. 6b–d).

Discussion

In this study, we found that the background K⁺ channel TREK-1 is involved in the analgesic effect of morphine but not in several adverse effects of this drug. Added to the known involvement of TREK-1 in the physiology of pain^{19,20}, the present results thus suggest the great interest of TREK-1 as a target for new analgesic compounds with a good benefit/risk ratio.

The TREK-1 channel appears to be a major contributor to the systemic morphine analgesic effect assessed both in acute pain tests and in models of pathological pain, which makes the demonstration of its involvement clinically relevant. Deletion of the TREK-1 channel results in a strong inhibition of the antinociceptive effect of morphine (3 mg kg⁻¹, s.c.) in both the tail immersion and the hot-plate tests (from 40% reduction of analgesic efficacy in the tail immersion test to 66% in the hot-plate test), confirmed by an increase of 45% of its ED₅₀ in *TREK-1*^{-/-} mice compared with littermates. A similar reduction in the morphine analgesic effect was observed in pathophysiological models of post-surgical or neuropathic pain. This demonstrates that a functional link between μOR and the TREK-1 channel is needed for analgesia. TREK-1 involvement in morphine-induced antinociception occurs at lower analgesic doses than for GIRK channels. In comparison we found, in agreement with the literature¹⁷, that GIRK channels are only involved in the antinociceptive effect at higher doses of morphine (5 mg kg⁻¹). Moreover, we demonstrate here that morphine-induced μOR activation leads to an increased TREK-1 current through PKA regulatory serine 333 in the C-terminal domain of the channel, as morphine-induced TREK-1 activation is suppressed when this amino acid is mutated. It is well documented that morphine reduces cAMP and PKA activities;

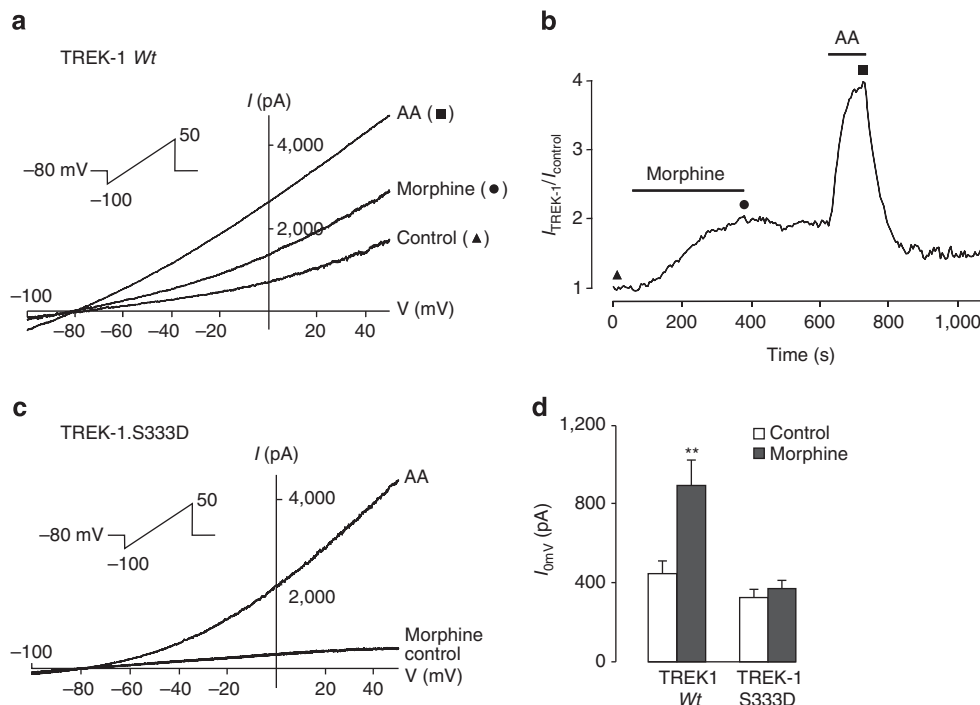


Figure 3 | Evidence of the functional coupling between μ OR and TREK-1 in COS cells. (a), I-V curves of TREK-1 channels elicited by voltage ramps (-100 to $+50$ mV, 800 ms) applied every 20 s on COS cells expressing the wild-type TREK-1 channel, in presence of $10 \mu\text{M}$ morphine or $10 \mu\text{M}$ arachidonic acid (AA) acutely perfused on the cell, or in control condition. (b) Characteristic current trace showing the activation of TREK-1 current, measured at 0 mV, by perfusion of $10 \mu\text{M}$ morphine followed by $10 \mu\text{M}$ arachidonic acid. (c) I-V curves acquired on COS cells expressing the mutant TREK-1.S333D channel in presence of $10 \mu\text{M}$ morphine, $10 \mu\text{M}$ AA or in control condition. (d) Mean \pm s.e.m. of wild-type TREK-1 and TREK-1.S333D current intensity in presence of $10 \mu\text{M}$ morphine and in control condition, recorded at 0 mV. Morphine significantly increased wild-type TREK-1 current ($n=10$, $**P<0.005$, Wilcoxon matched pairs test) but had no effect on the mutant channel ($n=6$, Wilcoxon matched pairs test).

thus, it can be proposed that morphine might alleviate the tonic PKA inactivation of TREK-1 channels, which would hyperpolarize the plasma membrane and depress neuronal activity in the pain pathway. A similar increase in TREK-1 current has been described with the activation of the $G_{\alpha i}$ -coupled GPCR mGlu4 involving PKA phosphorylation on serine 333 (ref 21). Moreover, an increase in TREK-2 current, closely related to the TREK-1 channel, has been observed following activation of the $G_{\alpha i}$ -coupled receptor GABA_B. Baclofen, a GABA_B agonist, has been shown to depress the adenylyl cyclase/cAMP/PKA pathway and to reduce the tonic inhibition of PKA on TREK-2 channel, which reduced the excitability of stellate neurons by generating membrane hyperpolarization³⁰. Interestingly, mGlu4 and GABA_B agonists have been shown to possess an analgesic effect^{31–34}.

This interaction between morphine and TREK-1 is supposed to be located at the central level, as morphine is a centrally acting analgesic drug. At the spinal level, where morphine is known to act on the pain nervous pathway, μ ORs are located on synaptic terminals where they reduce the neurotransmitter release³⁵, while somatic and dendritic receptors induce a strong hyperpolarization of the neuron. This may result from an inhibition of calcium channels or from a direct effect on the release machinery downstream from the calcium entry, as well as from membrane hyperpolarization through the activation of K^+ channels^{36,37}. Similarly to μ OR, the TREK-1 channel is located both in pre- and post-synaptic compartments of the central nervous system^{38–40}. Thus, TREK-1 disinhibition by morphine through the activation of μ OR may take place at the presynaptic afferences where it would limit the excitatory neurotransmitter release. Or, on the other hand, activation of postsynaptic TREK-1 channels may

participate in the morphine-induced inhibition of secondary projection neurons. The hyperpolarization caused by TREK-1 opening might increase the voltage-dependent Mg^{2+} blockade of NMDA receptors³⁹ and therefore reduce neurotransmission⁴¹. TREK-1 could therefore participate in the spinal inhibitory effect of morphine on pain transmission, in combination with GIRK channels, located at the postsynaptic level^{42,43}.

Tolerance to the analgesic effect of morphine implies that the amount of drug required to elicit pain relief must be increased to maintain analgesia. Opioid tolerance is usually associated with a decrease in opioid receptor sensitivity and expression in the plasma membrane, and with alterations of signalling mechanisms. It has been proposed that chronic exposure to morphine tonically enhances the cAMP pathway via the superactivation of adenylyl cyclase and alters gene expression through the cAMP-responsive element-binding protein phosphorylation and expression^{44,45}. The cAMP/PKA pathway inhibits the TREK-1 channel²⁷, and therefore chronic exposure to morphine could lead to constitutive TREK-1 inhibition. Considering the role that we observe for TREK-1 in morphine analgesia, inhibition of TREK-1 could explain the tolerance to the analgesic effect of low doses of morphine and the reduction in tolerance to these doses in TREK-1 KO mice compared with their wild-type littermates. This reinforces the idea of an important contribution of the TREK-1 channel in the antinociceptive and antihyperalgesic effects of morphine and confirms that the TREK-1 channel can be considered as a downstream effector of μ OR involved in the opioid-induced analgesia. However, the reduced influence of TREK-1 in analgesia and especially in tolerance induced by high doses of morphine, shown in KO mice, suggests that other effectors than TREK-1 could be involved, which is in line with

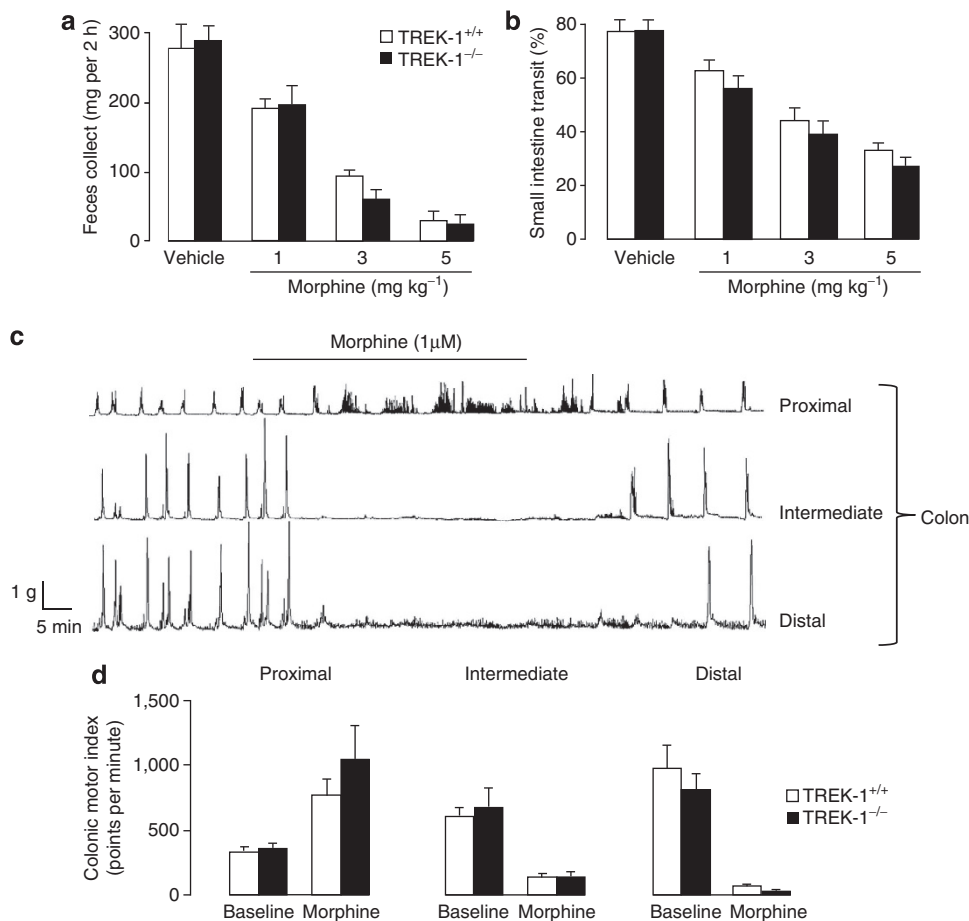


Figure 4 | Lack of involvement of the TREK-1 channel in morphine-induced constipation. (a) Evaluation of global fecal boli. Mice were treated with morphine (1, 3 or 5 mg kg⁻¹, s.c.) or saline. Total defecation was weighed over a 2-h period after treatment. Data are represented as the mean \pm s.e.m., $n = 8-9$ per dose for each genotype. (b) Evaluation of gastrointestinal transit. Mice were treated with morphine (1, 3 or 5 mg kg⁻¹, s.c.) or saline before they were orally given a solution of methylene blue. Mice were killed 30 min later and the percentage of small intestine stained, showing the distance travelled by the dye through the gastrointestinal tract, was measured. Data are represented as the mean \pm s.e.m., $n = 8-9$ per dose for each genotype. Statistical analysis was performed using two-way ANOVA, TREK-1^{+/+} versus TREK-1^{-/-}. (c,d) *Ex vivo* evaluation of morphine-induced constipation. (c) Example of migrating motor complexes (MMCs) recording in a colon isolated from a TREK-1^{+/+} mouse. The circular muscle tensions recorded in the proximal, intermediate and distal zones of the colon, reflecting the spontaneous contractile activity, are shown. A 1- μ M morphine perfusion disorganized the motor activity in the proximal part of the colon, whereas it totally inhibited the contractile activity of the intermediate and distal zones. (d) Comparative MMC index values obtained from TREK-1^{+/+} and TREK-1^{-/-} mice in the proximal, intermediate and distal colon. After resampling the tension curves at 30 points per second, the number of points above the basal threshold value, considered as colonic contractile activity, was counted. Data are represented as the mean \pm s.e.m., $n = 3-4$ per genotype.

previous studies suggesting an involvement of GIRK channels for these doses^{16,17}.

Morphine induces several adverse effects in humans as well as in rodents. At analgesic doses, the inhibition of gastrointestinal transit occurs, and constipation is a recurring complaint among patients under prolonged opioid treatment. This has motivated recent innovative therapeutic approaches to reduce it⁴⁶. Interestingly, contrary to its antinociceptive effect, morphine-induced reduction in gastrointestinal tract function was unchanged in TREK-1 KO mice; all parameters tested were identical in both genotypes. This result is consistent with the recent observations that the nitroergic-induced inhibition of neuromuscular transmission in the gastrointestinal tract, an important factor in morphine-induced constipation⁴⁷, does not involve TREK-1 channels⁴⁸. It demonstrates that analgesia and constipation, two usual effects of opioids, do not involve the same mechanisms downstream from μ OR. Therefore, they may be dissociated. This is a very important finding because of the high prevalence of constipation in patients treated with opioids⁴⁹, and

the observation that for some patients in advanced illness opioid-induced constipation can rival distress caused by pain⁵⁰.

At higher doses, morphine induces a decrease in respiratory frequency, and this can have critical consequences, especially in the case of overdose⁵¹ or in patients with respiratory failure⁵². Opioids induce respiratory depression by a number of mechanisms and neuronal sites of action⁵³, including the pre-Botzinger complex of the ventrolateral medulla, which makes this effect mechanistically complex. Again, contrary to its antinociceptive effect, morphine-induced decrease in the respiratory rate was unchanged in TREK-1 KO mice, excluding the involvement of this channel in this adverse opioid effect.

Chronic exposure to morphine also leads to dependence, which is apparent through the withdrawal syndrome triggered by the abrupt discontinuation of morphine exposure. Although correlations have been described between tolerance and dependence^{54,55}, evidence of independent mechanisms between these two phenomenon also exists⁵⁶. Our present work demonstrates, for

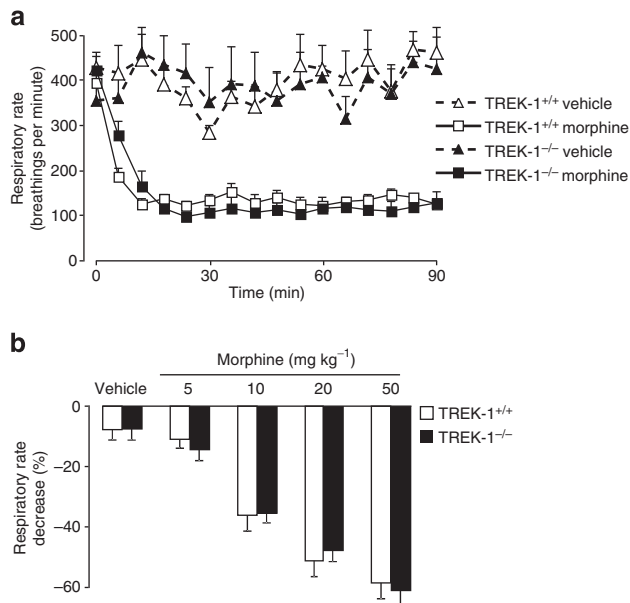


Figure 5 | Lack of involvement of the TREK-1 channel in morphine-induced respiratory depression. Evaluation of morphine-induced respiratory depression. **(a)** Respiratory rate curves of *TREK-1*^{+/+} and *TREK-1*^{-/-} mice following administration of morphine (50 mg kg⁻¹, s.c.) or saline. **(b)** Percentage of respiratory rate decrease in *TREK-1*^{+/+} and *TREK-1*^{-/-} mice following administration of morphine (5, 10, 20 or 50 mg kg⁻¹, s.c.) or saline. Data are represented as the mean \pm s.e.m., $n = 5$ –12 per dose for each genotype. Statistical analysis was performed using two-way ANOVA, *TREK-1*^{+/+} versus *TREK-1*^{-/-}.

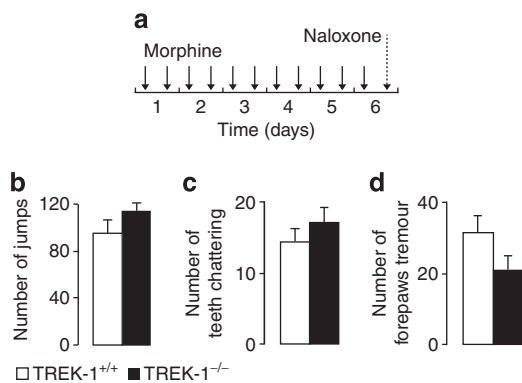


Figure 6 | Lack of involvement of the TREK-1 channel in morphine-induced dependence. Evaluation of morphine-induced dependence. Mice received repeated administrations of morphine over a 6-day period (10 mg kg⁻¹, s.c., twice a day on days 1–5, once on day 6) and were subsequently treated with naloxone (2 mg kg⁻¹, i.p.) on the last day **(a)**. Behavioural response to withdrawal, characterized by jumps **(b)**, teeth chattering **(c)** and forepaws tremor **(d)** were recorded over a 30-min period. Data are represented as the mean \pm s.e.m., $n = 8$ –10 per dose for each genotype. Statistical analysis was performed using unpaired Student's *t*-test.

all the symptoms explored, that the TREK-1 channel is not involved in the naloxone-induced withdrawal syndrome to chronic exposure to morphine. This observation, together with a recent work showing only a very modest contribution of all TREK channels in opioid-induced reward-related behaviour⁵⁷, excludes the TREK-1 channel from a role in morphine-induced dependence and distinguishes it from GIRK channels that have

clearly been involved in this effect of morphine. Indeed, Cruz *et al.*¹⁷ have demonstrated that GIRK channels, possibly via the postsynaptic inhibition of the adrenergic neurons of the locus coeruleus, constitute an inhibitory gate for the induction of dependence.

Taken together, our results show for the first time that there is a major involvement of the TREK-1 channel in the analgesic effect of μ OR agonists both in acute nociceptive and painful pathological conditions and that this channel is not involved in the usual adverse effects of acute or chronic exposure to morphine such as constipation, respiratory depression and dependence. This demonstrates that analgesic and some of the most common adverse effects of morphine are mediated by different effectors downstream from μ OR. Acting downstream μ OR, directly on the TREK-1 channel, would be expected to provide an opportunity to dissociate the analgesic from the major adverse effects of opioids for pain therapies. Therefore, the TREK-1 channel could be a target of choice to design novel analgesic compounds as effective as morphine but devoid of its main adverse effects, which could be a major progress in the pharmacological therapy of pain. However, validation of this concept needs to perform studies with specific TREK-1 activators and it would be interesting to determine the lack of depressive effect of these compounds because of the antidepressant phenotype of TREK-1 KO mice⁵⁸.

Methods

Animals. *TREK-1*^{-/-} mice have been generated by homologous recombination leading to the deletion of exon 3, which encodes the TM1 domain of the channel⁴¹. Heterozygous *TREK-1*-deficient mice were then backcrossed with C57Bl/6J congenic mice (Charles River, France) over 10 generations. All animals (*TREK-1*^{+/+} and *TREK-1*^{-/-}) were 8- to 12-week-old males of N6F2 to N10F2 backcross generation. Mice were housed in grouped cages in a temperature-controlled environment with food and water *ad libitum*. The behavioural experiments were performed blind to the genotype and to the treatment, in a quiet room, by the same experimenter for a given test, and taking great care to avoid or minimize discomfort of the animals.

All animal procedures were approved by the local Animal Ethics Committee (Comité d'Éthique en matière d'Expérimentation Animale en Auvergne, CEEA-02, France) and experiments were performed according to the guidelines provided by the European Community guiding in the care and use of animals (86/609/CEE).

Drugs. The following drugs were used: morphine hydrochloride (1–50 mg kg⁻¹ for *in vivo* experiment and 1 μ M for *in vitro* experiments) (Cooper, Melun, France), fentanyl (0.03 mg kg⁻¹), naloxone hydrochloride (2 mg kg⁻¹), tertipine (30 pmol) and methylene blue (1 mg ml⁻¹) (Sigma-Aldrich Chimie S.a.r.l., Lyon, France). All drugs were prepared just before use in 0.9% (w/v) NaCl solution, except for methylene blue dissolved in a 10% dextrose solution.

Behavioural assessment of analgesic effect of morphine. Several experimental series were performed: the first one to comparatively determine the kinetics (15, 30, 45, 60 and 90 min after treatment) of the effect of morphine in healthy WT and KO mice using two tests of thermal nociception (the heated water immersion assay and the hot-plate test); the second one to establish the ED₅₀ of morphine in both genotypes at the peak effect (30 min after treatment); and the last one to determine kinetics in neuropathic and post-surgical pain models.

For the heat water immersion assay, water temperature was kept constant at 46.0 \pm 0.2 $^{\circ}$ C using a thermoregulated water bath. Mice were maintained under a soft cloth except their tail/left hindpaw, which was immersed in water until withdrawal was observed (cutoff time of 40 s)⁵⁹.

For the hot-plate test, mice were placed on the plate (52.0 \pm 0.2 $^{\circ}$ C) and latencies to the first response characterized by the following signs were assessed: licking, shaking hindpaws or jumping (cutoff time of 40 s)⁶⁰.

Unilateral peripheral mononeuropathy was induced in mice anaesthetized with sodium pentobarbital (60 mg kg⁻¹, i.p.) with three chronic gut (4-0) ligatures tied loosely (with about 1-mm spacing) around the common sciatic nerve²⁵. The nerve was constricted to a barely discernable degree, so that circulation through the epineurial vasculature was not interrupted. Heat sensitivity was tested 14 days after surgery by immersing the ipsilateral hindpaw to the partial nerve ligature of gently restrained mice in a water bath at 46 $^{\circ}$ C.

The plantar incisional pain model was operated as initially described by Brennan *et al.*²⁴ Mice were anaesthetized with isoflurane 2.5%, and the skin of the operated foot was cleaned with povidone iodine 10% (Merck) and placed in the

hole of a sterile drape. A 5-mm longitudinal incision was made through the skin and the fascia of plantar face of the left hindpaw, starting at 2 mm from the proximal edge of the heel. The plantar muscle was then incised longitudinally keeping attention to leave muscle origins intact. Behavioural pain test was performed 48 h after surgery by immersing the ipsilateral hindpaw to the surgery of gently restrained mice in a water bath at 46 °C.

Naloxone-precipitated withdrawal syndrome. Animals were first given twice daily morphine injections (10 mg kg⁻¹ s.c.) for 6 days (and one final injection on day 7)⁶¹. Withdrawal was precipitated on day 7 by injecting naloxone (2 mg kg⁻¹, i.p.) 2 h after the final administration of morphine⁶². Ten minutes before naloxone treatment, mice were placed in a transparent acrylic box (20 cm in diameter, 60 cm high) to habituate to the new environment. Immediately after naloxone challenge, each mouse was placed back in the box gently, and the frequency of naloxone-precipitated withdrawal signs (escape jumps, teeth chattering, paw tremour) was recorded for 30 min. These symptoms were only seen following withdrawal. We have performed additional experiments by submitting wild-type mice to a 6-day regimen of saline injections followed by naloxone injection (2 mg kg⁻¹, i.p.). We failed to see any signs of withdrawal in this case.

Tolerance paradigm. The tail immersion test was used to determine tolerance paradigm. On the first day, baselines (drug-free pain thresholds) were first established; then mice were tested 30 min after subcutaneous administration of 0, 1, 3 or 5 mg kg⁻¹ morphine. From the next morning on, mice received two daily morphine injections (10 mg kg⁻¹ s.c.) for 6 days (only one injection on day 7)⁶¹. Finally, on day 8, mice were re-tested using tail immersion as described for day 1. Comparison between day 1 and day 8 allowed evaluating the development of morphine tolerance. It is indicated by a significant decrease in analgesic effect of morphine on day 8 as compared with day 1.

Assessment of respiratory effect of morphine. Whole-body plethysmography was performed in a noninvasive manner^{63,64}, using an eight-chamber barometric plethysmograph apparatus (Emka Technologies, VA, USA) allowing the simultaneous monitoring of several animals of each genotype in parallel. The integrated software analysis (IOX, Emka Technologies, VA, USA) was used for calculation of the respiratory frequency. Mice were habituated to the chamber for 15 min prior to injection. Analysis of respiratory frequency over the 15-min habituation period revealed that the last 5 min produced relatively steady respiratory frequency. Therefore, breathing rate in this period was used to normalize the drug-induced effects over the 1.5-h test period.

Assessment of gastrointestinal effect of morphine. Fecal boli accumulation was evaluated on mice that were housed together prior to the test and provided food and water *ad libitum*. To assure that both genotypes were similarly eating, food consumption was monitored (grams of food consumed in 24 h) and normalized per mouse. Mice were then treated with saline or morphine (1, 3 or 5 mg kg⁻¹, s.c.) and placed individually in Plexiglass boxes with a grid floor. Fecal boli were collected and weighed 2 h post-treatment.

Gastrointestinal transit was evaluated on mice that have received an injection of 0.1 ml of methylene blue-labelled 10% dextrose solution, using oral gavage. Thirty minutes later, the mice were killed. The stomach was clamped with a string above the lower oesophageal sphincter and a string beneath the pylorus to prevent the leakage of methylene blue. The intestinal transit was measured from the pylorus to the most distal point of migration of methylene blue. It was expressed as the percentage of total intestinal length^{65,66}.

Colonic migrating motor complexes were measured as described by Fida *et al.*⁶⁷ The entire colon was removed and placed in a dish containing modified Krebs's solution (see composition below) at 4 °C, flushed of faecal material and the mesentery was dissected away. A stainless steel, side-hole tube inserted through the lumen of the colon was used to secure the preparation into an organ bath that was continuously perfused with modified Krebs's solution (3 ml min⁻¹) containing (in mM) the following: NaCl 120, KCl 5, NaH₂PO₄·2H₂O 1, MgSO₄·7H₂O 1, NaHCO₃ 25, glucose 11 and CaCl₂ 2.5, bubbled with 95% O₂ and 5% CO₂ and maintained at 36.0 ± 0.5 °C. Three stainless steel hooks were inserted through the *muscularis externa* perpendicular to the long axis of the colon. The hooks were placed 1.5 cm apart and about 2 cm from each end of the colon. Each hook was hung up on a Grass FT03 isometric force transducer to record circular muscle contractions from the proximal, intermediate and distal parts of the colon, respectively. Tension, which was initially set to below 10 mN, was monitored continuously using an MP150 interface and was recorded on a PC running Acknowledge 3.7.2 software (BIOPAC systems, Santa Barbara, CA, USA).

Electrophysiological experiments. COS cells were plated at a density of 20,000 cells per 35-mm petri dish and grown at 37 °C in DMEM containing 10% of fetal bovine serum and 1% of antibiotics (penicillin and streptomycin). Transfections were performed using the JetPEI reagent 1 day after plating, according to the supplier's protocol. Briefly, cells were incubated 4–6 h with a mix of pIRES2-muOR-EGFP, pIRES2-TREK-1-EGFP or the mutant pIRES2-TREK-1S333D-

EGFP, and JetPEI (2 µl per µg of plasmids)³⁸. TREK-1-S333D mutant is analogous to the phosphorylated form of TREK-1 thus to the PKA-mediated inhibited form of the channel. Transfected cells, identified by their green fluorescence, were used for whole-cell voltage-clamp recordings 2–4 days after transfection. We used the whole-cell voltage-clamp configuration of the patch-clamp technique to measure membrane currents from transfected COS-7 cells. Current levels were measured at 0 mV as the difference with current levels at –80 mV, the reversal potential for K⁺. In control experiments with COS cells transfected with muOR, there was no activation of endogenous currents by 10 µM morphine or 10 µM arachidonic acid (*n* = 4, *P* > 0.1, Wilcoxon matched pairs test (Supplementary Fig. S5)). Recordings were made at room temperature using an axopatch 200B amplifier (Axon Instruments) with a 3-kHz low-pass filter (Krohn-Hite). Data were sampled at 10 kHz, digitized by a Digidata 1440 A-D/D-A converter (Axon Instruments) and recorded on a hard drive using the pClamp software (version 10, Axon Instruments). Patch pipettes (1–4 MΩ) contained (in mM) the following: 135 KCl, 5 NaCl, 2 MgCl₂, 5 EGTA, 10 HEPES (pH 7.25 with KOH) and the control bath solution contained (in mM) the following: 145 NaCl, 5 KCl, 2 MgCl₂, 2 CaCl₂, 10 HEPES (pH 7.4 with NaOH). Drugs of interest were dissolved at their final concentration in the control bathing solution and were applied to individual patch-clamped cells using a home-made microperfusion system driven by microsolenoid valves (Sirai, Italy) allowing rapid solution changes.

Statistical analysis. Data, expressed as mean ± s.e.m., were analysed using Sigma STAT Software version 3.0 for Windows (STAT32 Software Inc., San Diego, CA, USA). The specific tests used are indicated within the text of the figure legends.

References

- Kieffer, B. L. & Gaveriaux-Ruff, C. Exploring the opioid system by gene knockout. *Prog. Neurobiol.* **66**, 285–306 (2002).
- Matthes, H. W. *et al.* Loss of morphine-induced analgesia, reward effect and withdrawal symptoms in mice lacking the mu-opioid-receptor gene. *Nature* **383**, 819–823 (1996).
- Ling, G. S., Spiegel, K., Lockhart, S. H. & Pasternak, G. W. Separation of opioid analgesia from respiratory depression: evidence for different receptor mechanisms. *J. Pharmacol. Exp. Ther.* **232**, 149–155 (1985).
- Ling, G. S., MacLeod, J. M., Lee, S., Lockhart, S. H. & Pasternak, G. W. Separation of morphine analgesia from physical dependence. *Science* **226**, 462–464 (1984).
- Heyman, J. S., Williams, C. L., Burks, T. F., Mosberg, H. I. & Porreca, F. Dissociation of opioid antinociception and central gastrointestinal propulsion in the mouse: studies with naloxonazine. *J. Pharmacol. Exp. Ther.* **245**, 238–243 (1988).
- Majumdar, S. *et al.* Truncated G protein-coupled mu opioid receptor MOR-1 splice variants are targets for highly potent opioid analgesics lacking side effects. *Proc. Natl Acad. Sci. USA* **108**, 19778–19783 (2011).
- Majumdar, S. *et al.* Synthesis and evaluation of aryl-naloxamide opiate analgesics targeting truncated exon 11-associated mu opioid receptor (MOR-1) splice variants. *J. Med. Chem.* **55**, 6352–6362 (2012).
- Vanderah, T. W. Delta and kappa opioid receptors as suitable drug targets for pain. *Clin. J. Pain* **26**(Suppl 10): S10–S15 (2010).
- Pradhan, A. A., Befort, K., Nozaki, C., Gaveriaux-Ruff, C. & Kieffer, B. L. The delta opioid receptor: an evolving target for the treatment of brain disorders. *Trends Pharmacol. Sci.* **32**, 581–590 (2011).
- Stephenson, J. Methylaltraxone reverses opioid-induced constipation. *Lancet Oncol.* **3**, 202 (2002).
- Webster, L. *et al.* Alvimopan, a peripherally acting mu-opioid receptor (PAM-OR) antagonist for the treatment of opioid-induced bowel dysfunction: results from a randomized, double-blind, placebo-controlled, dose-finding study in subjects taking opioids for chronic non-cancer pain. *Pain* **137**, 428–440 (2008).
- Riviere, P. J. Peripheral kappa-opioid agonists for visceral pain. *Br. J. Pharmacol.* **141**, 1331–1334 (2004).
- Bates, J. J., Foss, J. F. & Murphy, D. B. Are peripheral opioid antagonists the solution to opioid side effects? *Anesth. Analg.* **98**, 116–122 table of contents (2004).
- Zuo, Z. The role of opioid receptor internalization and beta-arrestins in the development of opioid tolerance. *Anesth. Analg.* **101**, 728–734 table of contents (2005).
- Ocana, M., Cendan, C. M., Cobos, E. J., Entrena, J. M. & Baeyens, J. M. Potassium channels and pain: present realities and future opportunities. *Eur. J. Pharmacol.* **500**, 203–219 (2004).
- Marker, C. L., Stoffel, M. & Wickman, K. Spinal G-protein-gated K⁺ channels formed by GIRK1 and GIRK2 subunits modulate thermal nociception and contribute to morphine analgesia. *J. Neurosci.* **24**, 2806–2812 (2004).
- Cruz, H. G. *et al.* Absence and rescue of morphine withdrawal in GIRK/Kir3 knock-out mice. *J. Neurosci.* **28**, 4069–4077 (2008).
- Fink, M. *et al.* Cloning, functional expression and brain localization of a novel unconventional outward rectifier K⁺ channel. *EMBO J.* **15**, 6854–6862 (1996).

19. Alloui, A. *et al.* TREK-1, a K⁺ channel involved in polymodal pain perception. *EMBO J.* **25**, 2368–2376 (2006).
20. Noel, J. *et al.* The mechano-activated K⁺ channels TRAAK and TREK-1 control both warm and cold perception. *EMBO J.* **28**, 1308–1318 (2009).
21. Cain, S. M., Meadows, H. J., Dunlop, J. & Bushell, T. J. mGlu4 potentiation of K(2P)2.1 is dependant on C-terminal dephosphorylation. *Mol. Cell Neurosci.* **37**, 32–39 (2008).
22. Noel, J., Sandoz, G. & Lesage, F. Molecular regulations governing TREK and TRAAK channel functions. *Channels (Austin)* **5**, 402–409 (2011).
23. Zollner, C. & Stein, C. Opioids. *Handb. Exp. Pharmacol.* 31–63 (2007).
24. Brennan, T. J., Vandermeulen, E. P. & Gebhart, G. F. Characterization of a rat model of incisional pain. *Pain* **64**, 493–501 (1996).
25. Bennett, G. J. & Xie, Y. K. A peripheral mononeuropathy in rat that produces disorders of pain sensation like those seen in man. *Pain* **33**, 87–107 (1988).
26. Murbartian, J., Lei, Q., Sando, J. J. & Bayliss, D. A. Sequential phosphorylation mediates receptor- and kinase-induced inhibition of TREK-1 background potassium channels. *J. Biol. Chem.* **280**, 30175–30184 (2005).
27. Patel, A. J. *et al.* A mammalian two pore domain mechano-gated S-like K⁺ channel. *EMBO J.* **17**, 4283–4290 (1998).
28. Bell, T. J. *et al.* The prevalence, severity, and impact of opioid-induced bowel dysfunction: results of a US and European Patient Survey (PROBE 1). *Pain Med.* **10**, 35–42 (2009).
29. McQuay, H. Opioids in pain management. *Lancet* **353**, 2229–2232 (1999).
30. Deng, P. Y. *et al.* GABA(B) receptor activation inhibits neuronal excitability and spatial learning in the entorhinal cortex by activating TREK-2 K⁺ channels. *Neuron* **63**, 230–243 (2009).
31. Smith, G. D. *et al.* Increased sensitivity to the antinociceptive activity of (+/–)-baclofen in an animal model of chronic neuropathic, but not chronic inflammatory hyperalgesia. *Neuropharmacology* **33**, 1103–1108 (1994).
32. Chen, S. R. & Pan, H. L. Distinct roles of group III metabotropic glutamate receptors in control of nociception and dorsal horn neurons in normal and nerve-injured Rats. *J. Pharmacol. Exp. Ther.* **312**, 120–126 (2005).
33. Goudet, C. *et al.* Group III metabotropic glutamate receptors inhibit hyperalgesia in animal models of inflammation and neuropathic pain. *Pain* **137**, 112–124 (2008).
34. Malcangio, M. & Tomlinson, D. R. A pharmacologic analysis of mechanical hyperalgesia in streptozotocin/diabetic rats. *Pain* **76**, 151–157 (1998).
35. Pan, Y. Z., Li, D. P., Chen, S. R. & Pan, H. L. Activation of mu-opioid receptors excites a population of locus coeruleus-spinal neurons through presynaptic disinhibition. *Brain Res.* **997**, 67–78 (2004).
36. Law, P. Y., Wong, Y. H. & Loh, H. H. Molecular mechanisms and regulation of opioid receptor signalling. *Annu. Rev. Pharmacol. Toxicol.* **40**, 389–430 (2000).
37. Heinke, B., Gingl, E. & Sandkuhler, J. Multiple targets of mu-opioid receptor-mediated presynaptic inhibition at primary afferent Adelta- and C-fibers. *J. Neurosci.* **31**, 1313–1322 (2011).
38. Maingret, F. *et al.* TREK-1 is a heat-activated background K(+) channel. *EMBO J.* **19**, 2483–2491 (2000).
39. Lauritzen, I. *et al.* Polyunsaturated fatty acids are potent neuroprotectors. *EMBO J.* **19**, 1784–1793 (2000).
40. Sandoz, G. *et al.* AKAP150, a switch to convert mechano-, pH- and arachidonic acid-sensitive TREK K(+) channels into open leak channels. *EMBO J.* **25**, 5864–5872 (2006).
41. Heurteaux, C. *et al.* TREK-1, a K⁺ channel involved in neuroprotection and general anesthesia. *EMBO J.* **23**, 2684–2695 (2004).
42. Yoshimura, M. & North, R. Substantia gelatinosa neurons hyperpolarized in vitro by enkephalin. *Nature* **305**, 529–530 (1983).
43. Marker, C. L. *et al.* Spinal G-protein-gated potassium channels contribute in a dose-dependent manner to the analgesic effect of mu- and delta- but not kappa-opioids. *J. Neurosci.* **25**, 3551–3559 (2005).
44. Nestler, E. J. & Aghajanian, G. K. Molecular and cellular basis of addiction. *Science* **278**, 58–63 (1997).
45. Taylor, D. A. & Fleming, W. W. Unifying perspectives of the mechanisms underlying the development of tolerance and physical dependence to opioids. *J. Pharmacol. Exp. Ther.* **297**, 11–18 (2001).
46. Becker, G. & Blum, H. E. Novel opioid antagonists for opioid-induced bowel dysfunction and postoperative ileus. *Lancet* **373**, 1198–1206 (2009).
47. Iwata, H., Tsuchiya, S., Nakamura, T. & Yano, S. Morphine leads to contraction of the ileal circular muscle via inhibition of the nitrergic pathway in mice. *Eur. J. Pharmacol.* **574**, 66–70 (2007).
48. Gil, V. *et al.* Relative contribution of SKCa and TREK1 channels in purinergic and nitrergic neuromuscular transmission in the rat colon. *Am. J. Physiol. Gastrointest. Liver Physiol.* **303**, G412–G423 (2012).
49. Kalso, E., Edwards, J. E., Moore, R. A. & McQuay, H. J. Opioids in chronic non-cancer pain: systematic review of efficacy and safety. *Pain* **112**, 372–380 (2004).
50. Thomas, J. *et al.* Methylnaltrexone for opioid-induced constipation in advanced illness. *N. Engl. J. Med.* **358**, 2332–2343 (2008).
51. Hall, A. J. *et al.* Patterns of abuse among unintentional pharmaceutical overdose fatalities. *JAMA* **300**, 2613–2620 (2008).
52. Macintyre, P. E., Loadson, J. A. & Scott, D. A. Opioids, ventilation and acute pain management. *Anaesth. Intensive Care* **39**, 545–558 (2001).
53. Pattinson, K. T. Opioids and the control of respiration. *Br. J. Anaesth.* **100**, 747–758 (2008).
54. Way, E. L., Loh, H. H. & Shen, F. H. Simultaneous quantitative assessment of morphine tolerance and physical dependence. *J. Pharmacol. Exp. Ther.* **167**, 1–8 (1969).
55. Rezvani, A. & Way, E. L. Hypersensitivity of the opioid-tolerant guinea pig ileum to electrical stimulation after abrupt agonist removal. *Life Sci.* **33**(Suppl 1): 349–352 (1983).
56. Bohn, L. M., Gainetdinov, R. R., Lin, F. T., Lefkowitz, R. J. & Caron, M. G. Mu-opioid receptor desensitization by beta-arrestin-2 determines morphine tolerance but not dependence. *Nature* **408**, 720–723 (2000).
57. Mirkovic, K., Palmersheim, J., Lesage, F. & Wickman, K. Behavioural characterization of mice lacking TreK channels. *Front. Behav. Neurosci.* **6**, 60 (2012).
58. Heurteaux, C. *et al.* Deletion of the background potassium channel TREK-1 results in a depression-resistant phenotype. *Nat. Neurosci.* **9**, 1134–1141 (2006).
59. Janssen, P. A., Niemegeers, C. J. & Dony, J. G. The inhibitory effect of fentanyl and other morphine-like analgesics on the warm water induced tail withdrawal reflex in rats. *Arzneimittelforschung* **13**, 502–507 (1963).
60. Ohlsson, L. Algesimetric studies by the hot plate method in mice. *Acta Pharmacol. Toxicol. (Copenh)* **9**, 322–331 (1953).
61. Bogulavsky, J. J. *et al.* Deletion of the glutamate receptor 5 subunit of kainate receptors affects the development of morphine tolerance. *J. Pharmacol. Exp. Ther.* **328**, 579–587 (2009).
62. Liaw, W. J. *et al.* Distinct expression of synaptic NR2A and NR2B in the central nervous system and impaired morphine tolerance and physical dependence in mice deficient in postsynaptic density-93 protein. *Mol. Pain* **4**, 45 (2008).
63. Drorbaugh, J. E. & Fenn, W. O. A barometric method for measuring ventilation in newborn infants. *Pediatrics* **16**, 81–87 (1955).
64. Hamelmann, E. *et al.* Noninvasive measurement of airway responsiveness in allergic mice using barometric plethysmography. *Am. J. Respir. Crit. Care Med.* **156**, 766–775 (1997).
65. De Winter, B. Y. *et al.* Effect of inhibition of inducible nitric oxide synthase and guanylyl cyclase on endotoxin-induced delay in gastric emptying and intestinal transit in mice. *Shock* **18**, 125–131 (2002).
66. Watkins, C. C. *et al.* Insulin restores neuronal nitric oxide synthase expression and function that is lost in diabetic gastropathy. *J. Clin. Invest.* **106**, 373–384 (2000).
67. Copel, C., Clerc, N., Osorio, N., Delmas, P. & Mazet, B. The Nav1.9 channel regulates colonic motility in mice. *Front. Neurosci.* **7**, 58 (2013).

Acknowledgements

We wish to thank Valérie Julia for providing the plethysmometric apparatus and Florian Lesage for providing knockout mice. This work was supported by grants from Agence Nationale de la Recherche (ANR-11-BSV4-022-01; ANR-09-MNPS-037-01), Fondation pour la Recherche sur le Cerveau (DEQ 20130326482), the Société Française d'Etude et de Traitement de la Douleur, région Auvergne and FEDER, Fondation Hamel.

Author contributions

J.B. and M.D. conducted the experiments, analysed the data and participated in the preparation of the manuscript. A.A. participated to initiate the work and to behavioural experiments. J.N. conducted electrophysiological experiments and participated in the preparation of the manuscript. P.D. and B.M. were involved in experiments on colonic muscular wall activity. S.L. and V.P. were associated with behavioural experiments. M.C. and E.D. conducted electrophysiological experiments. A.E. and M.L. supervised the project, participated in data analysis and manuscript preparation.

Additional information

Supplementary Information accompanies this paper at <http://www.nature.com/naturecommunications>

Competing financial interests: The authors declare no competing financial interests.

Reprints and permission information is available online at <http://npg.nature.com/reprintsandpermissions/>

How to cite this article: Devilliers, M. *et al.* Activation of TREK-1 by morphine results in analgesia without adverse side effects. *Nat. Commun.* **4**:2941 doi: 10.1038/ncomms3941 (2013).