



HAL
open science

Image analysis of microscopic crack patterns applied to thermal fatigue heat-checking of high temperature tool steels

Sabine Le Roux, Farid Medjedoub, Gilles Dour, Farhad Rezai-Aria

► **To cite this version:**

Sabine Le Roux, Farid Medjedoub, Gilles Dour, Farhad Rezai-Aria. Image analysis of microscopic crack patterns applied to thermal fatigue heat-checking of high temperature tool steels. *Micron*, 2013, 44, pp.347-358. 10.1016/j.micron.2012.08.007 . hal-01687308

HAL Id: hal-01687308

<https://hal.science/hal-01687308>

Submitted on 15 Feb 2019

HAL is a multi-disciplinary open access archive for the deposit and dissemination of scientific research documents, whether they are published or not. The documents may come from teaching and research institutions in France or abroad, or from public or private research centers.

L'archive ouverte pluridisciplinaire **HAL**, est destinée au dépôt et à la diffusion de documents scientifiques de niveau recherche, publiés ou non, émanant des établissements d'enseignement et de recherche français ou étrangers, des laboratoires publics ou privés.

Image analysis of microscopic crack patterns applied to thermal fatigue heat-checking of high temperature tool steels

Sabine Le Roux, Farid Medjedoub¹, Gilles Dour², Farhad Rézai-Aria*

Université de Toulouse, Mines Albi, ICA (Institut Clément Ader), Campus Jarlard, F-81013 Albi Cedex 09, France

A B S T R A C T

Surface cracking or heat-checking is investigated at a microscopic scale on a hot work tool steel (X38CrMoV5) tested under thermal fatigue. Thermal fatigue tests are periodically interrupted to observe the surface of the specimens by scanning electron microscopy (SEM). A non destructive and semi-automatic method is developed to assess and evaluate the two-dimensional crack pattern initiated on the oxide scale layer formed on the specimen surface. The crack pattern is characterized by image analysis in terms of density, morphological and topological features. This technique allows to determine the number of cycles to initiate the microscopic heat-checking and to follow its evolution.

Keywords:

Image analysis
Scanning electron microscopy
Thermal fatigue
Crack pattern
Oxidation
Hot work tool steel

1. Introduction

One of the major damage mechanisms occurring in hot forming tool steels under thermal fatigue solicitations is the formation of a network of interconnected cracks, often named “heat-checking” (Jean et al., 1999; Medjedoub et al., 2005; Norström et al., 1981; Persson et al., 2004). This kind of crack pattern is generally observed when a surface is subjected to the removal of a diffusing heat (in cooling) or liquid (in drying), as for example in thermally quenched ceramic materials (Korneta et al., 1998), dried mud (Velde, 1999; Vogel et al., 2005), drying of thin layers and films prepared by a sol-gel process (Bockmeyer and Löbmann, 2007; Shorlin et al., 2000). Persson et al. (2004) have related the heat-checking developing on hot work tool steels to a strong thermal gradient that provides tensile stresses during the cooling phase. In brittle materials, the tensile stresses are relieved by the development of a crack pattern on the surface (Korneta et al., 1998).

Different techniques are used to analyze surface crack damage. Norström et al. (1981) evaluated and ranked the steel resistance to heat-checking by a comparative method based on in-house standard charts. This technique allows a qualitative classification of the steels, but is limitative. Indeed, such method does not give

a very precise quantification of the damage grading, and it is only suitable for a specific type of damage at a given scale of observation. Moreover, this evaluation is rather subjective, since the results can vary from an observer to another. More recently, quantitative investigations have been proposed using image analysis software to evaluate the “crack density” (Andersons and Leterrier, 2005; Bockmeyer and Löbmann, 2007; Jean et al., 1999; Lemoine et al., 1986; Maillot et al., 2005; Wu and Xu, 2002). These methods constitute a more precise tool to qualify the damage rate. Different definitions (and unities) are proposed for the crack density, which are not always clearly expressed. It can be stated that the crack density is a global parameter, which solely represents the severity of the crack network, independently of its morphology. The fractal dimension, measured by the “box-counting” method, is sometimes used to quantify the complex geometry of soil cracking patterns (Velde, 1999) or heterogeneous materials under compressive loading (Yan et al., 2002). This approach, which leads also to represent the irregularity of the crack pattern by a global coefficient, generally requires different scales of observation of the same pattern, and is furthermore difficult to interpret. Some geometrical aspects, like the fragment area (Andersons and Leterrier, 2005), the crack segments length (Lemoine et al., 1986; Velde, 1999), or the orientation of the crack segments (Lemoine et al., 1986), have been in addition examined in different works.

Some studies focus specifically with topological properties (Korneta et al., 1998; Shorlin et al., 2000), and the hierarchical structure of the crack patterns (Bohn et al., 2005). These approaches, applicable to any cellular structure, provide interesting information on the structural organization of a crack network. For example, the distribution of the number of sides or neighbors of the

* Corresponding author. Tel.: +33 563493082; fax: +33 563493099.

E-mail address: rezai@mines-albi.fr (F. Rézai-Aria).

¹ Present address: Airbus France, Site de Saint Martin du Touch, 316 Route de Bayonne, 31060 Toulouse Cedex 9, France.

² Present address: NOPSEMA, Level 08 Alluvion Bld, 58 Mounts Bay Road, Perth 6000 WA, Australia.

Nomenclature

a	system-constant in Aboav–Weaire’s law
A	area of the heat-checking cells
A_m	average area of the heat-checking cells
A_{ref}	reference area of the digital image
c_i	individual cell of the cellular mosaic
ct	cooling time of the thermal cycle
C	compactness factor
d_b	number of crack branches per unit area
d_c	number of cells per unit area
d_n	number of branching nodes per unit area
E	elongation ratio
F_{min}	minimum Ferret diameter
F_{max}	maximum Ferret diameter
ht	heating time of the thermal cycle
j	crack junctions class
L_c	total cracks length
$m(n)$	average number of first neighbors of n -neighbored cells
n	number of first neighbors of a heat-checking cell
$\langle n \rangle$	average number of first neighbors of the cells
nsd	variance of the number of first neighbors of the cells
N	number of cycles
N_c	number of heat-checking cells
N_b	number of crack branches
N_i	number of cycles necessary for heat-checking initiation
N_n	number of nodes
N_{sat}	number of cycles necessary to achieve ρ_{sat}
P	Crofton perimeter of the heat-checking cells
$P(A)$	frequency distribution of the area of the heat-checking cells
$P(j)$	frequency distribution of the crack junction classes
$P(n)$	frequency distribution of the number of first neighbors of the cells
$P(\beta)$	frequency distribution of angles between the radiating branches from a node
$P(\theta)$	frequency distribution of the crack branch orientations
R_a	arithmetic mean roughness
t	time
T	temperature
T_{min}	minimum temperature of the thermal cycle
T_{max}	maximum temperature of the thermal cycle
β	angle between the radiating branches from a crack junction
μ_2	variance of the frequency distribution $P(n)$
ρ_{hc}	heat-checking density
ρ_{sat}	saturated heat-checking density
θ	orientation of crack branches

polygonal fragments or crack junction angles can help to understand the formation mechanism of the crack network, as long as the experimental observations are carried out appropriately. Vogel et al. (2005) exploit Minkowski functions to investigate the geometry of the crack patterns formed during the desiccation of clay soils. Based on mathematical morphology tools and especially the distance function, this generic method allows to describe the morphological and topological features of any kind of crack pattern, even not fully-connected ones. But it requires that the area of the crack can be precisely evaluated, and therefore, images with a sufficiently high magnification or resolution are necessary. A complex method, based on automatic edge detection and recognition

algorithms, is proposed by Lauschmann et al. (2001) to analyze the fractography of crack networks in thin layers. It consists in detecting and classifying the crack elements in finishing, crossing or passing branches in knots of the network. This method can be used to model the formation of a crack pattern in relation with fracture mechanics.

The present paper deals with a semi-automatic analysis of the superficial crack pattern from SEM micrographs, using image processing and mathematical morphology tools. This method is applied to characterize the microscopic heat-checking patterns, appearing generally on tool steels under thermal fatigue tests. The oxidation and cracking mechanisms are described. The heat-checking density is measured and some quantitative features are determined on the crack branches (length, orientation), the branching points (density, class junctions, angles) and the cells (size, shape, number of first neighbors). A complete description of the geometrical and topological features of the heat-checking pattern is reported for a unique test condition.

2. Thermal fatigue experiments

2.1. Test specimens

Thermal fatigue tests are performed on X38CrMoV5 (AISI H11) tool steel (see Table 1), quenched and double tempered to achieve a tempered martensitic structure with 47 HRC hardness (Jean et al., 1999; Medjedoub, 2004). Specimens are of hollow cylindrical shape with a central part of 40 mm length, a 30 mm external diameter, and an internal axial hole of 10 mm diameter, for circulation of cooling water (Fig. 1a). The specimens have a wall thickness of 10 mm in the central gauge area. The external surface is mechanically polished to reach an arithmetic mean roughness (R_a) of 0.02 μm .

2.2. Thermal fatigue rig

The thermal fatigue rig uses the induction heating of specimens by a CELES-25 kW high frequency generator (100–400 kHz). The induction frequency is about 115 kHz, resulting in a very fast heating of the specimen. During the test, continuous cooling is ensured by cold water circulating through the internal hole with a flow rate of 20 l/min. The external surface is air-cooled by natural convection. The temperature of the specimen is measured by a K-type thermocouple spot welded to the specimen surface (Fig. 1b).

2.3. Test conditions

Different thermal cycles, with a maximum temperature (T_{max}) ranking from 600 to 685 °C and a heating time (ht) ranging from 1.0 to 1.6 s, are applied (Fig. 2). For all the experiments, the cooling time (ct) is adjusted to achieve a minimum temperature (T_{min}) of 100 °C on the specimen surface (Table 2). In order to investigate the surface heat-checking and cracking evolution, the thermal fatigue experiments were regularly interrupted at different intervals: every 500 or 1000 cycles until 3000 cycles, then every 2000 or 2500 cycles up to 15,000 cycles, and every 10,000 cycles right up to the end of the test (Medjedoub et al., 2005).

3. Crack pattern analysis procedure

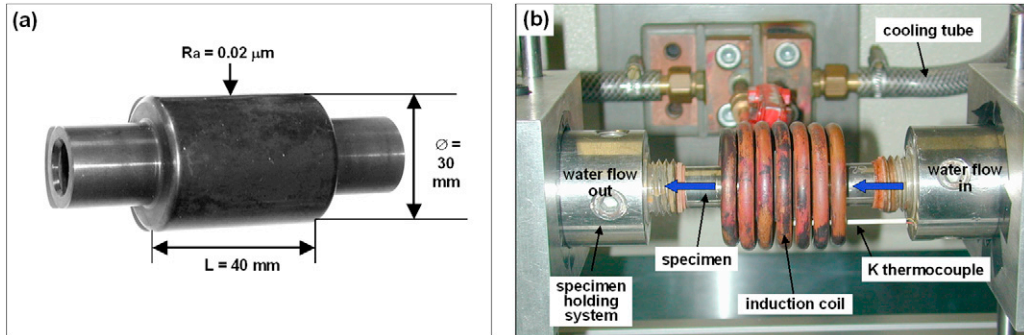
3.1. SEM image acquisition

The heat-checking surface morphology is observed using a scanning electron microscope (SEM) with a back-scattering electrons detector. A magnification of 250 times, sufficient to distinguish the micro-cracks, is selected. A cartography of a randomly selected

Table 1

Chemical composition of X38CrMoV5 (AISI H11) steel.

Element	C	Cr	Mo	V	Si	Mn	S	P	Fe
Weight%	0.396	5.05	1.25	0.47	0.94	0.36	<0.003	0.009	bal.

**Fig. 1.** Thermal fatigue specimen (a) and rig (b).

area of 0.825 mm^2 , chosen in the central region of the specimen where the temperature is uniformly distributed (“gauge area”), is systematically reconstructed by assembling a matrix of (3×3) image-fields (Fig. 3). To facilitate this reconstruction, an overlapping region representing approximately 15% of the image field is taken between two adjacent images. The resulting cartography is saved in the “Tiff” format, and transferred on the image analysis unit. The size of this digital image is about (1740×1210) pixels², leading to a resolution of $0.5 \mu\text{m}/\text{pixel}$. This mapping technique is optimized to provide detailed information on a large representative area, with a sufficiently precise resolution to detect the micro-cracks.

3.2. Image processing

The image analysis software Aphelion [ADCIS] is used to assess and evaluate the heat-checking density and morphology on the cartographies. Two algorithms are employed depending on the image contrast.

When the contrast between the micro-cracks and non-cracked oxide layer is sufficiently high (as in Fig. 4a), the cartography analysis is performed automatically. The treatment consists of several steps including pre-processing techniques, Boolean operations and mathematical morphology transformations (Coster and Chermant, 1989; Russ, 1995; Serra, 1982):

1. Median filtering using a (3×3) pixels² mask, to reduce the noise in the initial gray-scale image (Fig. 4b).
2. Contrast enhancement of “b” by the “top-hat” transformation using a (5×5) pixels² structuring element, followed by a linear expansion of the gray scale range (Fig. 4c). This allows to extract thin black lines (representing the cracks) placed on a heterogeneous background (oxide surface).

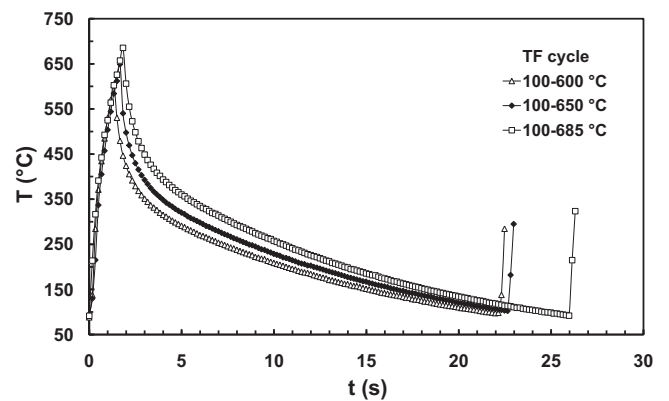
Table 2Thermal cycles used in the thermal fatigue experiments (the test with $T_{\text{max}} = 650 \text{ }^\circ\text{C}$ is considered as the reference test).

Minimum temperature, T_{min} ($^\circ\text{C}$)	Maximum temperature, T_{max} ($^\circ\text{C}$)	Heating time, ht (s)	Cooling time, ct (s)
	600	1.0	15.0
100	650	1.2	17.0
	685	1.6	22.0

3. Gray double thresholding of image “c” followed by a region growing routine, to extract the darkened micro-cracks (Fig. 4d). The obtained binary cracks network may contain some discontinuities resulting from an incomplete thresholding of the finest cracks.
4. Complementation of the thresholded image “d” in order to split the resulting heat-checking cells, using a “watershed segmentation” which reconstructs most of the cells boundaries (Fig. 4e). This operation suppresses the small discontinuities in the cracks network.
5. Thickening of the binary image “e” using a “skeleton by zone of influence”, followed by a complementation of the resulting image (Fig. 4f).

This algorithm leads to a skeletonized representation (reduced to a single pixel in width) of the fully inter-connected cracks network prior to quantification analysis.

When micro-cracks are not sufficiently opened (specially at the beginning of the heat-checking process), the contrast is often not high enough to allow an automatic detection of the heat-checking pattern (Fig. 5a). In this case, the cartography is carefully drawn on a transparent paper and digitized using a scanner at 256 gray levels and 150 dpi. The resulting gray scale images have a lower resolution (estimated at $1 \mu\text{m}/\text{pixel}$) than original SEM, due to the width of the manual line tracing. Although this acquisition step is

**Fig. 2.** Temperature-time profiles measured in the central area of the specimen for the $(100 \text{ }^\circ\text{C} - T_{\text{max}})$ thermal fatigue tests ($T_{\text{max}} = 600, 650$ and $685 \text{ }^\circ\text{C}$).

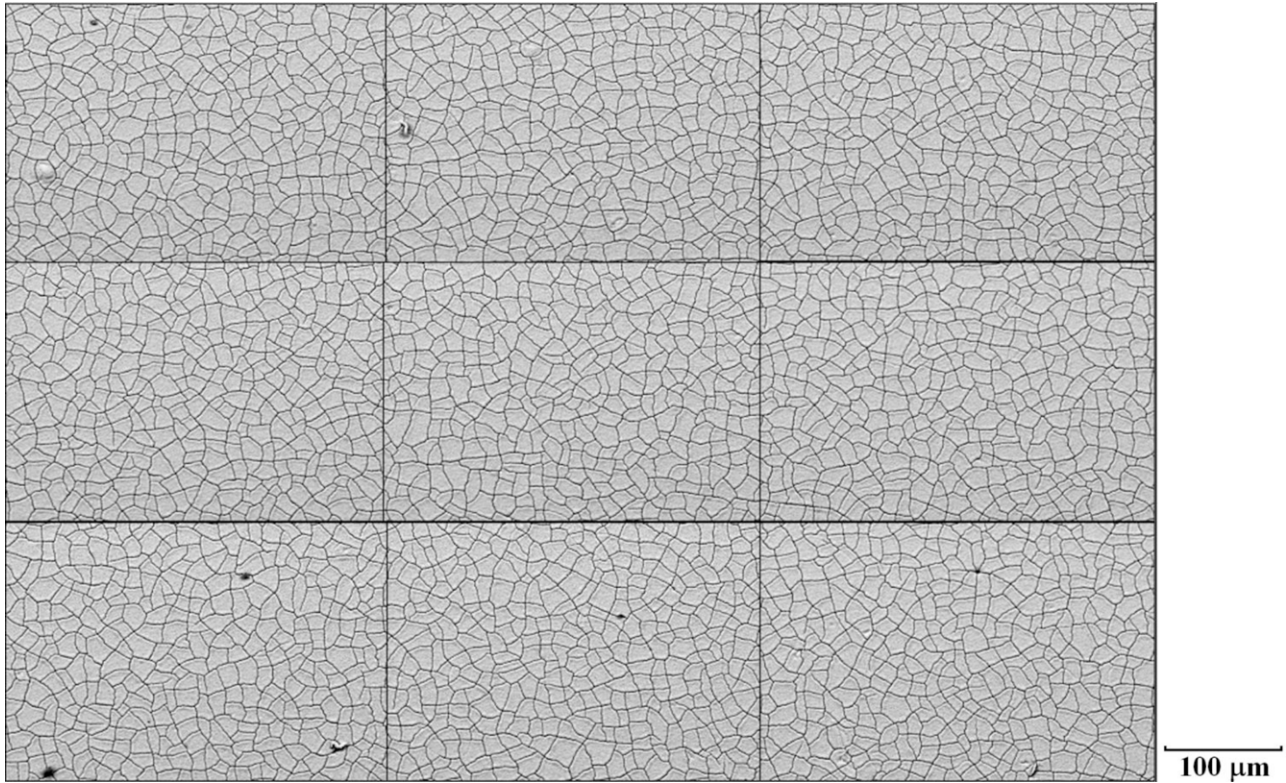


Fig. 3. Typical cartography (1.1 mm × 0.75 mm) obtained by assembling 9 SEM images of the specimen surface observed after a thermal fatigue test (BSE detector, 250×).

time-consuming, it greatly facilitates the image processing. Indeed, the binary thinned crack network can be directly obtained from the scanned cartography by simply applying an automatic thresholding (using the “entropy maximization” algorithm developed by [Kapur et al., 1985](#)) followed by a skeletonization of the cracks ([Fig. 5](#)). The manual drawing of the cracks induces certainly a subjectivity, as very short edges may be ignored or smoothed. But it remains nevertheless preferable to a direct analysis of the initial cartography

which would lead to uncompleted segmentation and produce biased results.

The binary skeletonized structure ([Figs. 4f and 5d](#)) represents in fact a thinned median axis of the cracks, which is a powerful tool containing both geometrical and topological information. The most direct way to describe such a crack network is to calculate the crack density. We define this global parameter, mentioned hereafter as the heat-checking density “ ρ_{hc} ” (in mm^{-1}), as the cumulated crack

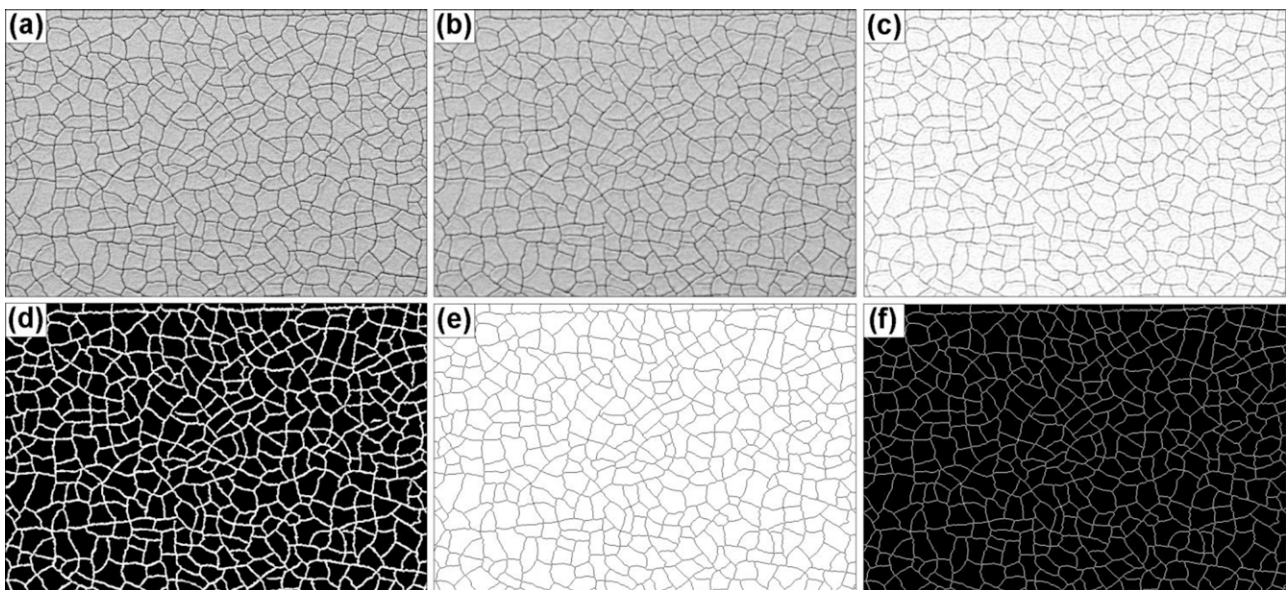


Fig. 4. Image processing procedure applied to a well-contrasted cartography (only a detailed part of images is represented for a better visualization): (a) initial SEM gray scale image; (b) median filtering of the image a; (c) contrast enhancement of the image b; (d) double thresholding of the image c; (e) segmentation of the binary image of heat-checking cells; (f) skeletonized cracks network.

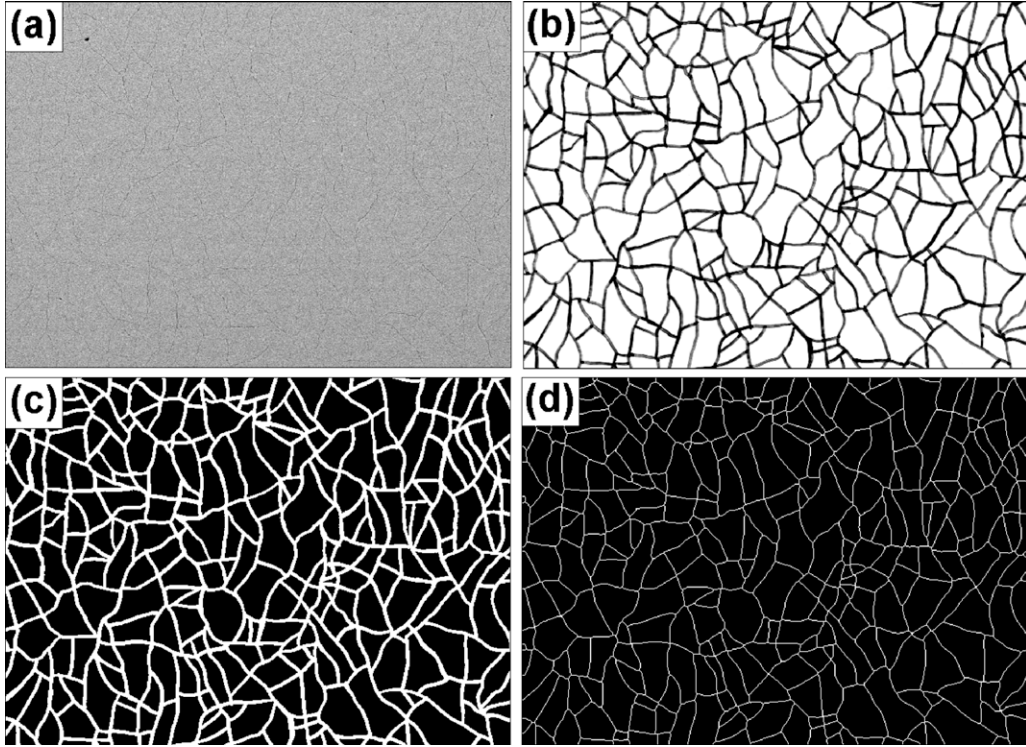


Fig. 5. Image processing procedure applied to a depicted cartography (only a detailed part of images is represented for a better visualization): (a) initial SEM gray scale image; (b) depicted cartography; (c) automatic thresholding of image b; (d) skeletonization of image c.

length “ L_c ” (in mm) divided by the area of the reference surface “ A_{ref} ” (in mm^2):

$$\rho_{hc}(X) = \frac{L_c(X)}{A_{ref}} \quad (1)$$

3.3. Geometrical parameters

The heat-checking network can be regarded as a planar mosaic constituted of quasi-convex polygons (called “cells”). To characterize the morphology of these cells, it is necessary to invert the binary image of the skeletonized crack network by the complementation operation (Fig. 6a). The cells which are partially included in the image field are removed (Fig. 6b), and the remaining cells are labeled (Fig. 6c).

For each cell c_i , the following calibrated geometrical parameters are calculated: area $A(c_i)$, Crofton perimeter $P(c_i)$, length (evaluated by the minimum Ferret diameter $F_{min}(c_i)$), and width (evaluated by the maximum Ferret diameter $F_{max}(c_i)$) (Coster and Chermant, 1989; Wang, 2006). The shape of the cells is characterized by the compactness, defined as:

$$C(c_i) = \frac{16.A(c_i)}{P(c_i)^2} \quad (2)$$

and the elongation, defined as:

$$E(c_i) = \frac{F_{max}(c_i) - F_{min}(c_i)}{F_{max}(c_i) + F_{min}(c_i)} \quad (3)$$

both of which range between 0 and 1. The compactness value is 1 for a perfect square, and smaller for shapes with irregular boundaries. The elongation equals to 0 in the case of a circle or a square, and approaches 1 for an ellipse that is long and narrow.

All these data are calculated on the entire field, and used to obtain frequency distributions describing the cells geometry and statistical parameters (such as the average size and the standard

deviation). Because the heat-checking cartographies are taken on a large area, the number of cells included inside the images is very high (between 500 and 4000 cells depending on the test conditions). The classical corrections generally required for planar sampling, like the Miles–Lantuéjoul statistical method used to compensate the edge effects (Lantuéjoul, 1978), are therefore not needed.

On the skeletonized crack network, the pixels having at least three neighboring pixels are considered as cracks junctions or crack intersections (called “branching points” or “nodes”). These nodes delimit the cell sides called “crack branches”. To analyze the morphological characteristics of crack branches, one need first to remove the nodes from the skeletonized crack network (Fig. 7a–c). This results in individualization of the crack branches. The crack branches intersecting the field border are eliminated and the remaining ones labeled.

The length and the orientation of the crack branches are measured respectively by the maximum Ferret diameter (F_{max}) and its corresponding angle θ (Wang, 2006). The possible range between 0° and 180° for the cracks orientation is divided into 36 classes having a width of 5° . The cumulated crack length is calculated as the centered sum of all branches having an orientation in the range of $\pm 2.5^\circ$ around the prescribed direction, and the normalized frequency distribution of cracks orientation $P(\theta)$ is presented as polar graphs (called “rose plot”).

The crack junction orientations are determined by the following procedure. The nodes of the crack network are extracted one by one on the labeled image of the branching points (Fig. 7d), and dilated twice using a square structuring element (Fig. 7e). The intersection between the dilated nodes and the crack branches of Fig. 7c provides markers in the branches radiating from the considered node. A geodesic dilatation (also called “reconstruction”) from these markers reconstitutes the complete radiating branches (Fig. 7f), of whom the orientations are measured using the maximum Ferret angle (defined above) with a precision of 1° . The angle

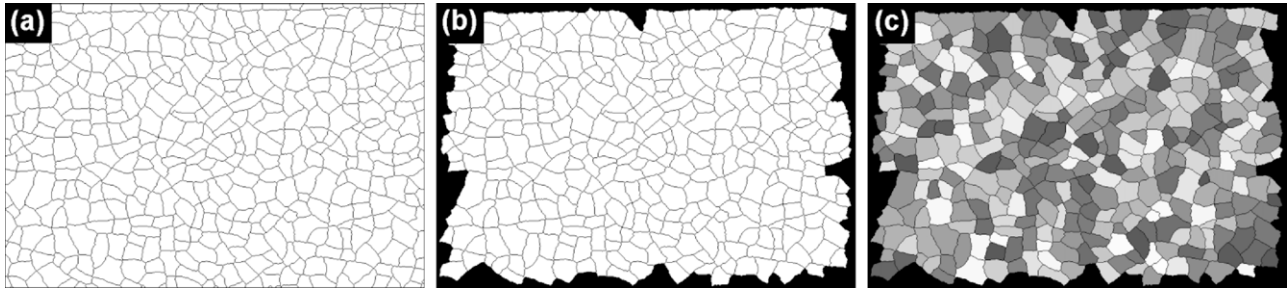


Fig. 6. Individual analysis of the heat-checking cells: (a) binary image of cells (complementary image of Fig. 4f or Fig. 5d); (b) elimination of all the cells interrupted by the image border; (c) individualization of the cells by the labeling procedure.

(β) between each radiating branch is then calculated, and the frequency distribution of the cracks junction orientation is achieved considering 18 classes having a width of 10° .

The previous procedure allows also to classify the crack junctions with respect to the number of radiating branches, simply by counting the individualized branches in Fig. 7f. For the sake of simplicity, we call “class 3 junction” a node connected to three crack branches, “class 4 junction” a node connected to four crack branches, “class 5 junction” a node connected to five crack branches, etc.

3.4. Topological parameters

Topological parameters are features which remain invariant when the analyzed object is modified by a geometric transformation (like stretching or distortion). From a topological point of view, the crack network can be characterized by the number of crack branches (N_b), the number of nodes (N_n) whereas the cellular structure (i.e., the inverted crack network), by the number of cells (N_c). The density of crack branches (d_b), nodes (d_n) and cells (d_c) are then expressed in mm^{-2} , as the ratio of the number of each feature

(corrected to take into account the edge effects) to the reference surface A_{ref} .

Another interesting topological feature of the cellular structure is the number of first neighbors n of each cell, and specially the average value (\bar{n}) and the frequency distribution $P(n)$. Two cells are considered neighbors if they share at least one side. According to the Lantuéjoul’s procedure (Lantuéjoul, 1978), the determination of n requires four steps. First, the individualized cells are extracted one by one from the cellular mosaic (Fig. 8a). Then, the selected cell is dilated twice using a square structuring element (Fig. 8b). The intersection between the dilated cell and the mosaic structure provides markers both in the analyzed cell and in the first neighboring cells, which are reconstituted by a geodesic reconstruction (Fig. 8c). It is straightforward to remove the central cell and count then the number of remaining cells constituting the first neighbors (Fig. 8d). This algorithm is applied to all the cells of the network, and leads to a label image in which the cells are classified according to their number of first neighbors (Fig. 8e). The n -neighbored cells can be selected by a simple thresholding of the label image, and the average number of neighbors of order 2 (i.e., the average number $m(n)$ of neighbors of the cells that are adjacent

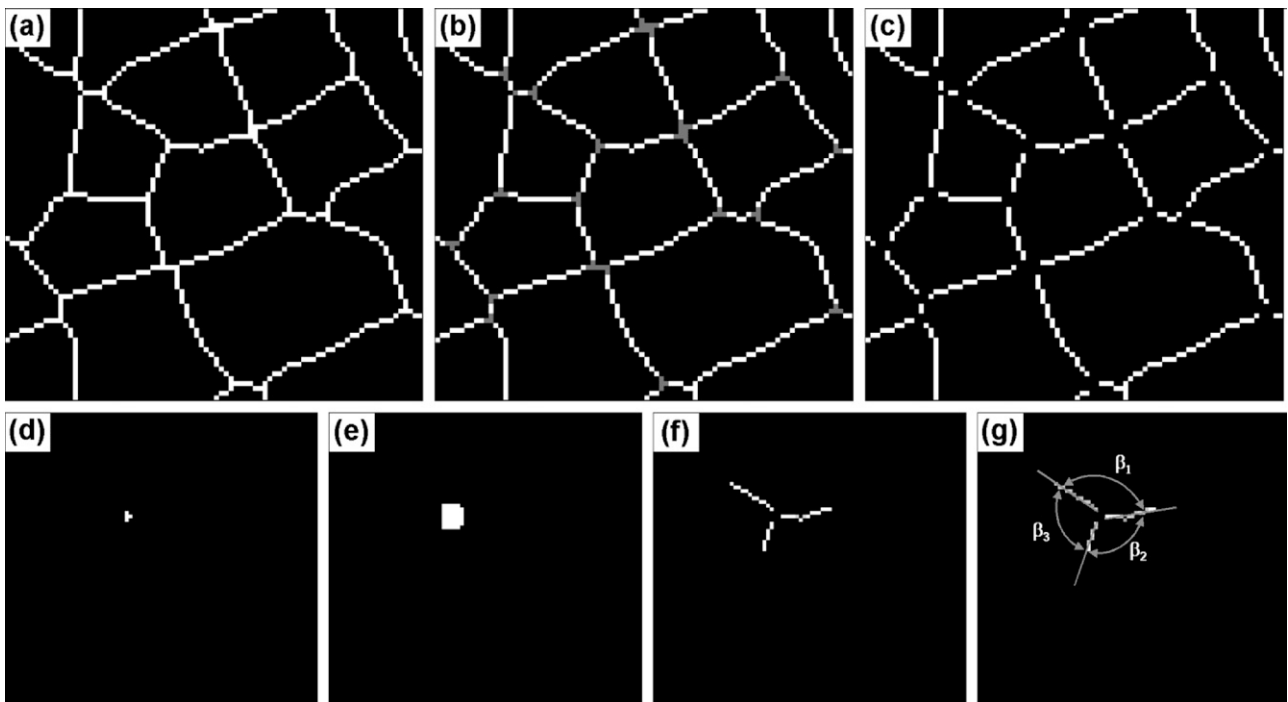


Fig. 7. Detection of the nodes and crack branches (only a detailed part of images is represented for a better visualization): (a) skeletonized crack network; (b) detection of branching points (in gray) on the skeletonized structure; (c) crack branches resulting from the removing of branching points on the crack network; (d) selection of one node; (e) selected node dilated twice; (f) reconstructed radiating crack branches from the selected node; (g) determination of β angles between radiating branches from the selected node.

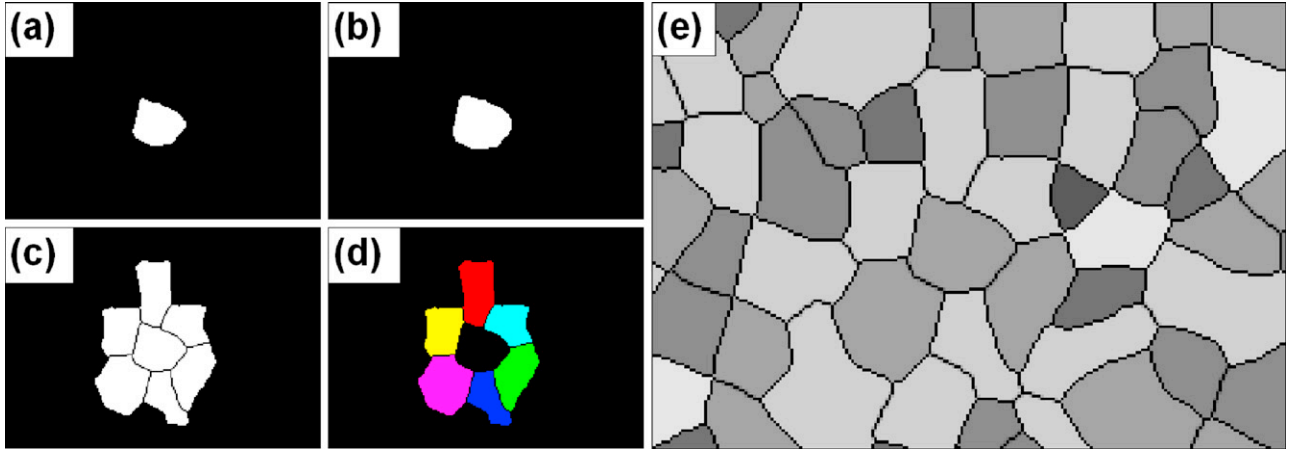


Fig. 8. Procedure to determine the number of first neighbors of the heat-checking cells: (a) selection of one cell in the cellular mosaic; (b) dilatation of the selected cell; (c) neighboring cells reconstruction; (d) labeling and counting of the first neighbors; (e) image of the cellular mosaic in which the cells are classified with a gray level related to their number of first neighbors.

to n -neighbored cells) can be determined by applying again the Lantuéjoul's procedure (Fortes and Pina, 1993). These topological numbers are then used in some semi-empirical laws describing the correlation between neighboring cells in planar cellular structures.

According to the classic Aboav–Weaire's law, the average number of neighbors of cells surrounding an n -neighbored cell $m(n)$ is linearly proportional to $1/n$ (Korneta et al., 1998; Zsoldos and Szasz, 1999), which is usually expressed by the equation:

$$n \cdot m(n) = (\langle n \rangle - a)n + (\langle n \rangle \cdot a + \mu_2) \quad (4)$$

where " $\langle n \rangle$ " is the average number of first neighbors of cells, " a " is a system-constant, and " μ_2 " is the variance of $P(n)$. This relationship indicates that many-neighbored cells tend to have few-neighbored neighbors, and vice versa (Fortes and Pina, 1993; Korneta et al., 1998). In Eq. (4), " a " is related to the slope of the regression line, ranging for most of cellular structures between 0.5 and 1.5. " μ_2 " characterizes the rate of disordering in the cellular structure: the more it increases, the more the cells are randomly distributed. Different values are reported for " μ_2 ": 0.6–1.1 in biological cells, 0.24–2.86 in soap foam, 1.72 in arsenic-selenium glass, 1.07 in cork patterns, 2.75 ± 0.07 in crack patterns produced by thermal shock in ceramics, etc. (Zsoldos and Szasz, 1999).

4. Results and discussion

4.1. Thermal fatigue cracking mechanism

Detailed SEM observations have revealed that the heat-checking pattern is composed of thin interconnected cracks of different lengths and orientations, due to the oxide-scale cracking under

the thermal stresses (Figs. 3 and 9). This is due to cyclic transition thermal gradients, induced by repeated heating and cooling of the surface. The morphology of oxide layer changes with the testing conditions, specially the maximum temperature T_{\max} of the thermal cycle (Medjedoub, 2004). For T_{\max} up to 600°C , the oxide layer is made of juxtaposed spangles, and when T_{\max} increases beyond 650°C , the structure of the oxide layer become alveolar and more adherent (Fig. 9). Post-mortem observations of specimen cross-sections revealed the formation of a duplex oxide-scale: a superficial layer rich in iron oxide (constituted mainly of hematite oxide Fe_2O_3), and an internal compact layer rich in Cr_2O_3 . These two layers present quasi-identical thicknesses (Fig. 10a). As can be seen in Fig. 10b, the micro-cracks occur in the outer-layer of the oxide scale and often stop at the interface between the two layers. As the external oxide layer is more porous, one can suppose that the micro-cracks originate on structural defects like porosities. It leads to a homogeneous crack pattern on the oxide surface (Fig. 3), which conforms to the heat-checking density statistical analysis (see hereafter).

Unfortunately, the crack width, which in fact represents the crack lips opening, is not large enough to be precisely quantified considering the cartography resolution. However, SEM observations seem to show that the crack width tends to grow while cycling, specially at the first stages of the heat-checking cell formation (Fig. 11a). In comparison to our case, the crack opening is much easier to observe in desiccated soils (Vogel et al., 2005).

4.2. Initiation and evolution of the heat-checking density

A typical evolution of heat-checking pattern and density as a function of the number of cycles is shown in Fig. 11, for the

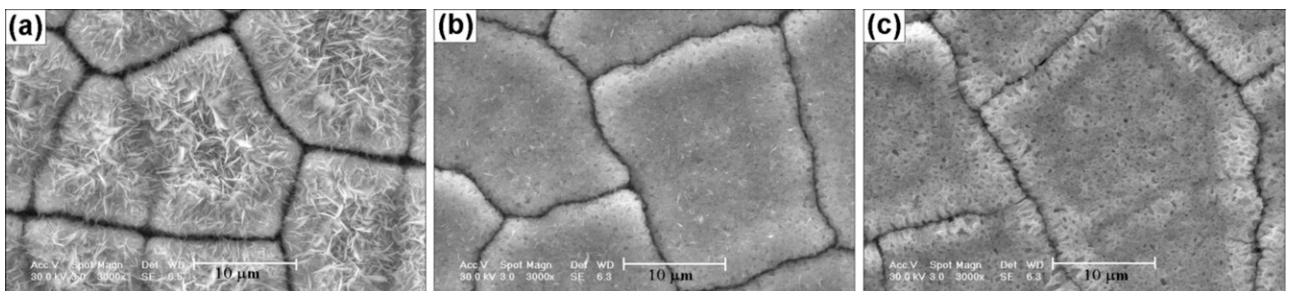


Fig. 9. SEM micrographs of the superficial oxide layer, showing various morphologies depending on the maximal temperature of the thermal fatigue test: $T_{\max} = 600^\circ\text{C}$ (a); $T_{\max} = 650^\circ\text{C}$ (b); $T_{\max} = 685^\circ\text{C}$ (c).

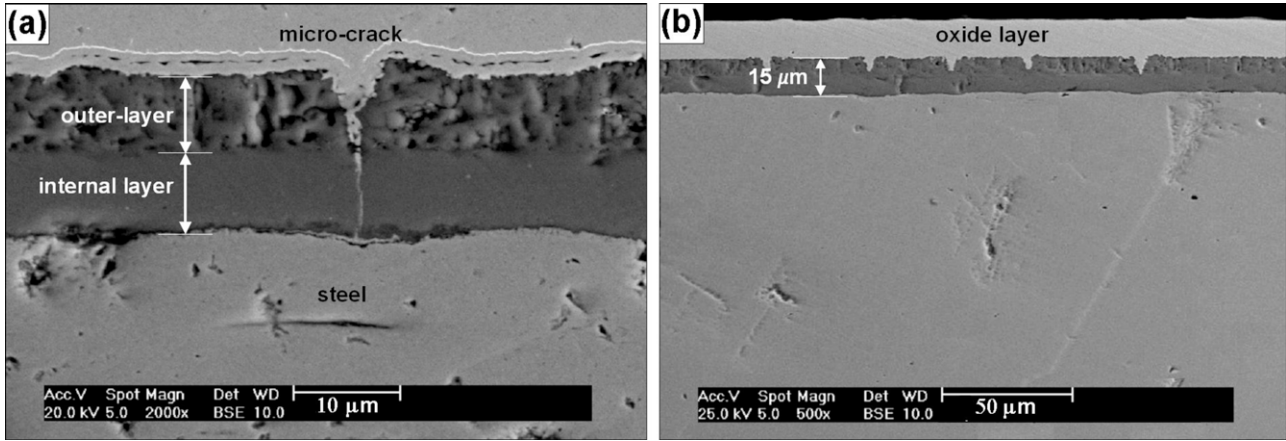


Fig. 10. SEM cross-section observations of the specimen after the reference test (100–650 °C cycle), showing the oxide layer structure (a), and micro-cracks in the oxide outer-layer (b).

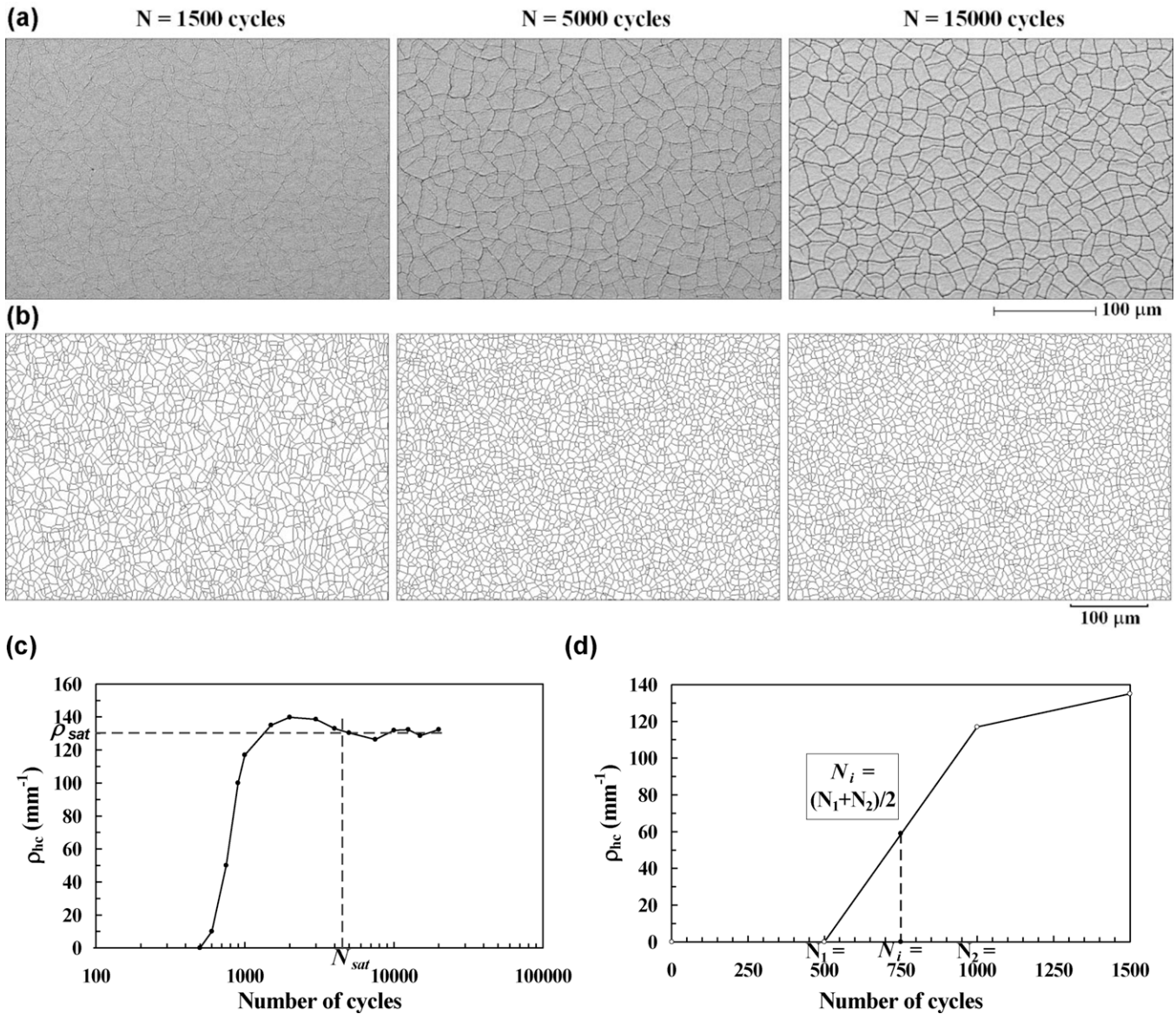


Fig. 11. Evolution of the heat-checking during the reference thermal fatigue test (100–650 °C cycle): heat-checking aspect on SEM micrographs (a) and cartographies (b) at 1500, 5000 and 15,000 cycles; (c) evolution of the heat-checking density ρ_{hc} versus number of cycles; (d) method to estimate the number of cycles (N_i) for heat-checking initiation.

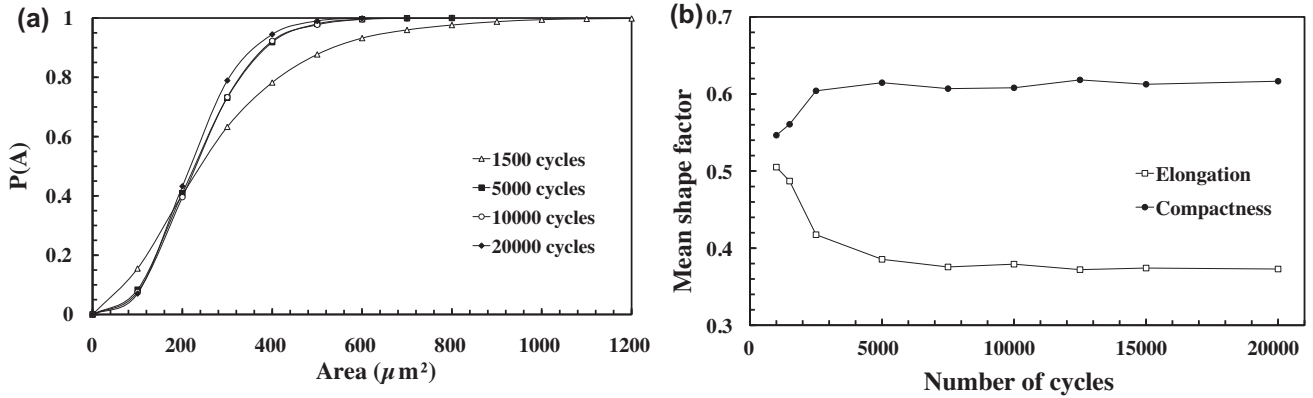


Fig. 12. Evolution of the size and morphology of the heat-checking cells with the number cycles N : (a) cumulative frequency distribution of the area $P(A)$; (b) mean shape factors versus N .

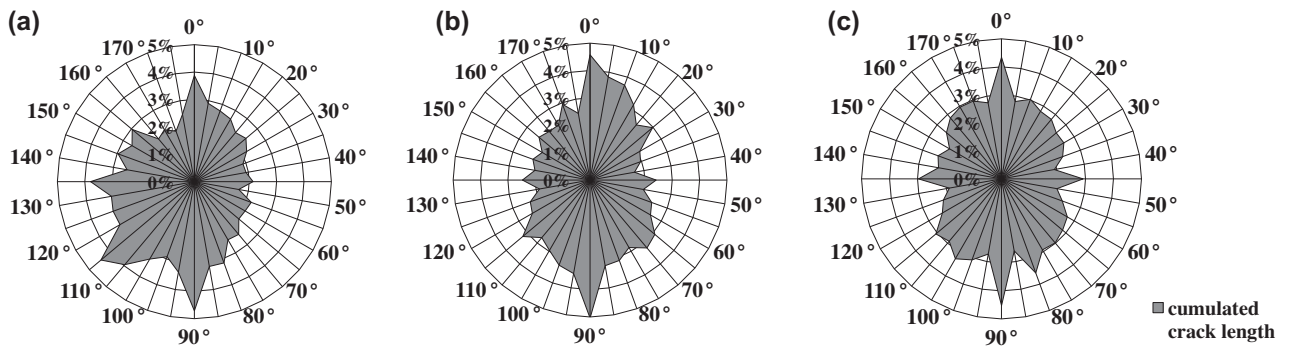


Fig. 13. Frequency distributions of crack branch orientations $P(\theta)$ (normalized crack length versus θ): $N = 1000$ cycles (a); $N = 5000$ cycles (b); $N = 20,000$ cycles (c).

reference thermal fatigue test (100–650 °C). It is observed that there is an incubation period where no crack is detected (it must be remembered that the detection limit does not allow to detect the crack with opening less than $0.5 \mu\text{m}$). Then, micro-cracks initiate, propagate and coalesce rapidly to form a network of interconnected cracks (Fig. 11a and b). Fig. 11c shows a sigmoidal trend for the evolution of the heat-checking density ρ_{hc} versus number of thermal cycles. As soon as heat-checking formation process is initiated, ρ_{hc} raises abruptly to reach a maximum value, prior to stabilizing to a asymptotic limit (named ρ_{sat}) beyond 5000 cycles. This limit remains quasi-constant (or saturated) for further thermal fatigue cycles. The number of cycles necessary to achieve ρ_{sat} is named N_{sat} (Fig. 11c). The slight decrease of ρ_{hc} following the peak value is explained by an oxide healing of some very shallow cracks. To

assess the homogeneity of the heat-checking in the gauge area of the specimen, five cartographies were taken in different zones at the end of two thermal fatigue tests ($T_{max} = 600$ and 650 °C). A standard deviation (σ) of about 3.5 was obtained for a ρ_{hc} of 135mm^{-1} . The small variation of ρ_{hc} values in the saturated stage (Fig. 11c) is of the same order of magnitude as σ (2.4–4.4, depending on the testing conditions), proving a well stabilized unmodified heat-checking pattern. Furthermore, we take for our careful observations that indeed the crack network remains quasi the same once ρ_{sat} has been reached. At the most, some cracks tend to open more, but follow the initial path.

According to the definition of Glenny (1967), the number of cycles for the heat-checking initiation (N_i) is the arithmetic value between the number of cycle when the heat-checking is first

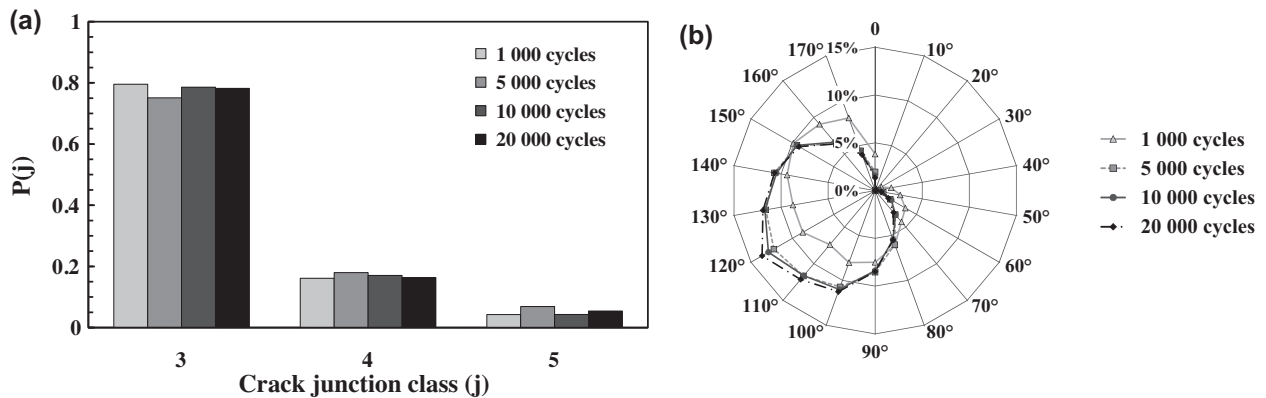


Fig. 14. Frequency distributions of the crack junction classes $P(j)$ (a), and angles $P(\beta)$ (b).

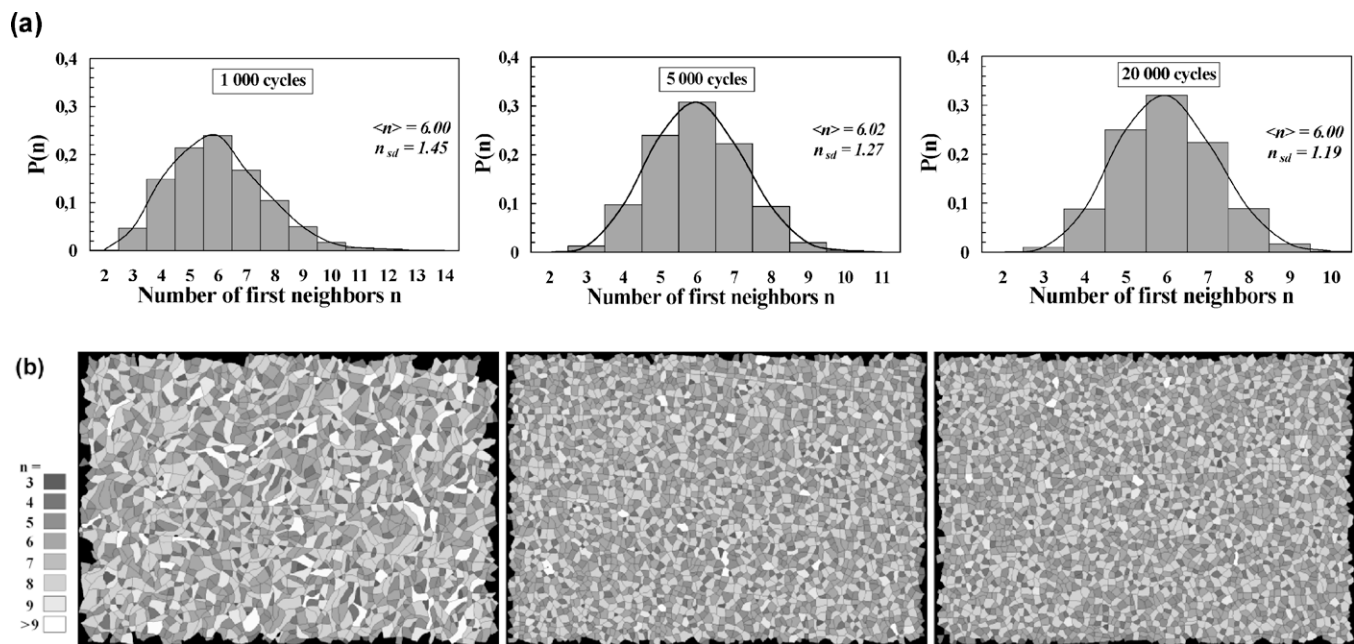


Fig. 15. Frequency distributions $P(n)$ of the number of first neighbors n of the heat-checking cells (a), and corresponding classified cellular mosaic images (b), for increasing number of cycles N (1000, 5000 and 20,000 cycles).

detected and the last previous thermal fatigue test interruption cycle, respectively named N_2 and N_1 (Fig. 11d). Because of the drastic sigmoidal evolution of the heat-checking density, the accuracy of the N_i value depends principally on the thermal fatigue interruption intervals and on crack detection limit. As in major experiments, tests were interrupted after every 500 cycles prior to heat-checking cells formation, we achieve a relatively fine estimation of N_i .

4.3. Morphological and topological features of the heat-checking network

The evolution of the morphological and topological characteristics of the heat-checking cells resulting from the oxide-scale cracking have been investigated during the cycling, for the reference thermal fatigue test (100–650°C). The size and the morphology of the heat-checking cells become more regular and homogeneous with increasing number of cycles (Fig. 12a). The cell compactness and elongation reach stabilized mean values (respectively 0.6 and 0.4), characterizing polygonal cells with irregular boundaries (Fig. 12 b).

Fig. 13, which presents the rose plot of the individualized crack branches orientation, indicates that the micro-cracks develop in all directions. A preferential cracking along 0° and 90°, corresponding to the maximal thermal stresses and strains solicitation directions, is however observed. The heat-checking network remains quasi-isotropic along with the number of cycles. It can be noted that this isotropic trend is enhanced with increasing the number of cycles. Indeed, at the beginning of the fragmentation process (i.e., for low number of cycles), crack branches oriented along 0° and 90° are less predominant (Fig. 13a). When the heat-checking is stable, we can clearly observe four symmetry axes on the rose plot along 0°, 45°, 90° and 135° directions (Fig. 13c).

All along the fragmentation process, the crack junctions are predominantly trivalent in the heat-checking network (Fig. 14a). The same phenomenon was noted by Korneta et al. (1998) on quenched ceramics. Bohn et al. (2005) have observed that triplets of cracks are generally formed on a surface defect. Frequency distributions of crack junction angles show that they range mostly between 100°

and 150°, with a peak at 120° appearing when the network reaches the stabilized regime (Fig. 14b). This angle corresponds, in fact, to “Y-shaped” junctions, related to an hexagonal type crack network. One can also note that 90° and 180° angles are weakly represented, and so-called “T-shaped” junctions are less present. A “T-shaped” junction is generally formed when a pre-existing cell is divided in two. Observing similar frequency distributions (with a strong peak around 120°) in desiccated clay soils, Vogel et al. (2005) concluded that the cells remains stable after their early formation. Shorlin et al. (2000) have reported that in drying layers, 120° junction angles are formed in the early stage of the crack pattern development, whereas 90° ones correspond to later crack propagation (due to the local stress field around cracks). The fact that “Y-shaped” junctions are predominantly observed on the oxide layer of the steel investigated here proves again that the heat-checking network is also very rapidly stabilized following its initiation.

From the initiation of the heat-checking network to its stabilization, the cells mosaic are constituted of a majority of cells with 5, 6 or 7 first neighbors (Fig. 15). The average number of first neighbors of cells $\langle n \rangle$ is very closed to 6, which is the ergodic theoretical value expressed by Euler’s theorem (Bohn et al., 2005; Lantuéjoul, 1978). The frequency distributions $P(n)$ follow a quasi-normal law, except when the heat-checking network is not saturated (i.e., for low number of cycles). We can also note that $P(n=6) > P(n=5) > P(n=7)$ is verified whatever the number of cycles. The same characteristics have been observed in quenched ceramics (Korneta et al., 1998), whereas crack networks formed in a drying layer are mostly four sided (Shorlin et al., 2000).

Fig. 16a demonstrates the applicability of the Aboav–Weaire’s correlation (4) for the heat-checking patterns obtained with the reference thermal fatigue test (100–650°C). Whatever the number of cycles considered, we find a near perfect agreement to this law, with correlation coefficients better than 0.99. The calculated parameters in the stabilized regime ($a = 1.11 \pm 0.15$, $a/\langle n \rangle = 0.19 \pm 0.04$, $\mu_2 = 1.50 \pm 0.23$) correspond to the case of a trivalent polygonal system (Zsoldos and Szasz, 1999). The rather low μ_2 value indicates that the rate of disordering is lower than in crack patterns produced by thermal shock in ceramics, where $\mu_2 = 2.75 \pm 0.07$ (Korneta et al.,

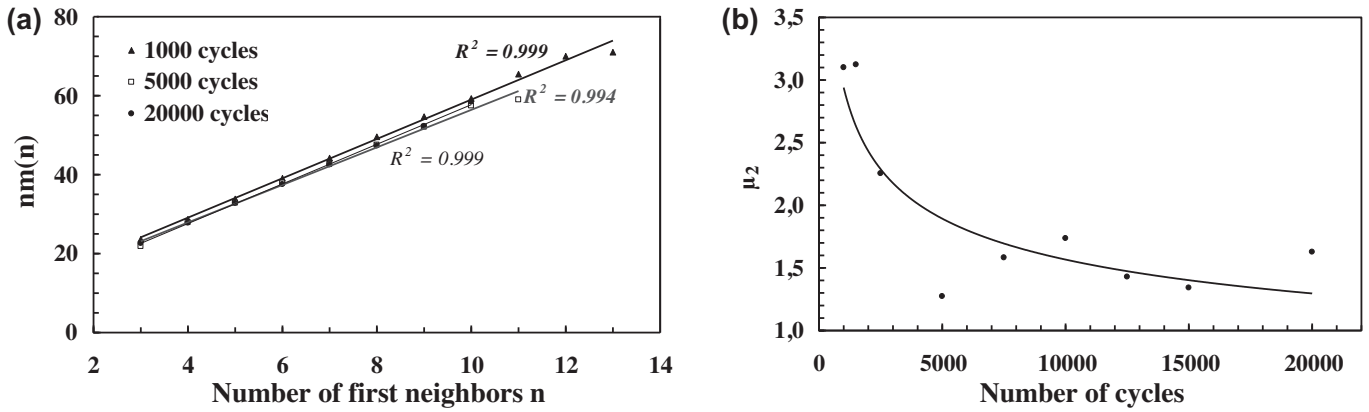


Fig. 16. Application of the Aboav-Weaire's law to the heat-checking pattern at different number of cycles N : (a) linear correlation $nm(n)$ versus n ($m(n)$ is the average number of neighbors of cells surrounding a n -neighbored cell); (b) evolution of μ_2 versus N .

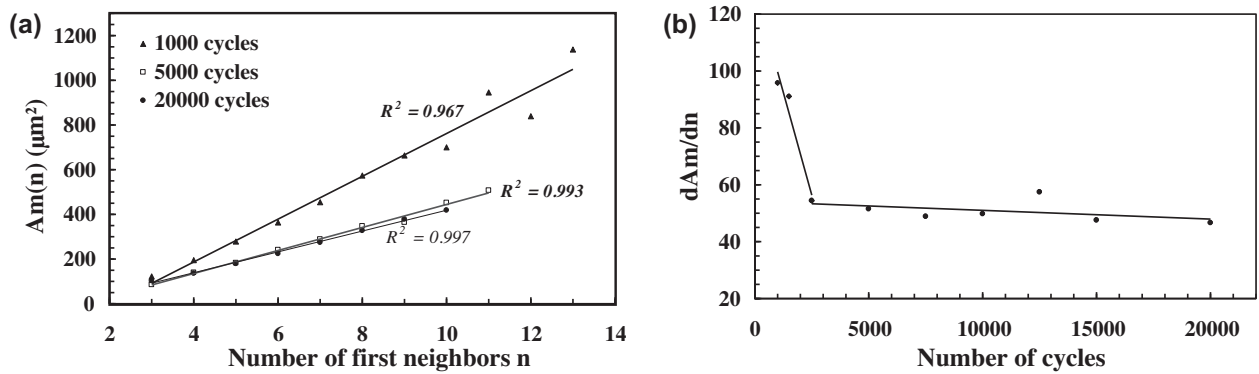


Fig. 17. Application of the Lewis' law to the heat-checking pattern at different number of cycles N : (a) linear relationship between the average area of the cells $A_m(n)$ and their number of first neighbors n ; (b) evolution of (dA_m/dn) versus N .

1998). The decreasing evolution of μ_2 versus the number of cycles reveals also that the heat-checking tends to reach a more ordered state in the stabilized regime (Fig. 16b).

Another topological correlation, known as the Lewis' law, states the fact that the average area of the cells (A_m) increases linearly with their number of first neighbors n (Zsoldos and Szasz, 1999). The heat-checking network follows perfectly this law, specially in the saturated regime (Fig. 17a). The slope of the linear variation decreases to a pseudo-saturation (Fig. 17b), and the correlation coefficient, always higher than 0.96, increases slightly with the number of cycles (Fig. 17a). One can note in Figs. 16a and 17a that when $n > 10$, the scattering increases, due to a lower number of cells for this population.

This investigation of the topological properties of the heat-checking pattern indicates that the stabilized cellular mosaic is a near hexagonal structure. This kind of organization characterizes many random tessellations observed in natural phenomena, for example crack patterns in ceramics (Korneta et al., 1998), soap foams, cooling-induced patterns in lava flows, shrinkage crack patterns in mud, etc. (Zsoldos and Szasz, 1999).

5. Conclusions

Heat-checking of hot work tool steel (X38CrMoV5) has been investigated under thermal fatigue experiments. The specimen surface is subjected to cyclic induction heating and natural cooling, under various test conditions. The thermal fatigue cycle is periodically interrupted, and the surface of the specimen is examined by scanning electron microscopy. Detailed observations have revealed that a multi-directional connected crack network is mainly formed

on a bi-layer oxide scales. The heat-checking formation and evolution has been investigated by image analysis. Automated or semi-automated procedures have been developed, depending upon the quality of the SEM images, in order to describe the morphological and topological features of the microscopic heat-checking network.

The heat-checking density follows a sigmoidal evolution, rapidly reaching an asymptotic value indicating the crack pattern saturation. The heat-checking cells size and shape homogenizes with increasing the number of cycles. The saturated crack pattern is quasi-isotropic, with two dominant orientations corresponding to the maximal thermo-mechanical loading directions. Most of the crack junctions are trivalent, "Y-shaped", with an angle distribution centered around 120° . This cellular pattern is closed to a trivalent polygonal structure. According to the Euler's law, the average number of neighbors for the cells tends to be 6. An investigation of the correlations between neighboring cells shows that both Aboav-Weaire's and Lewis' laws are applicable for heat-checking patterns, even in the non-saturated regime. All the characteristics of the microscopic heat-checking pattern (aspect, density, morphological and topological parameters) tend to stabilize after a critical number of thermal cycles.

The method develop here could be adapted to quantify the morphology of any kind of interconnected crack network, at any scale of magnification. For example, the crack patterns appearing in the glaze of ceramics (Bohn et al., 2005), in thin films prepared by sol-gel process (Bockmeyer and Löbmann, 2007), and in oxide coatings on polymer substrate under biaxial tension (Andersons and Leterrier, 2005) present a quite similar aspect and development to those observed on our specimens.

Acknowledgments

The authors would like to thank the CTIF (Centre Technique des Industries de Fonderie), in particular Dr. P. Hairy, for supporting a part of this activity. The French National Program on Forging (ACRII and Simulforge) and CETIM are also acknowledged for the financial support.

References

- Andersons, J., Leterrier, Y., 2005. Advanced fragmentation stage of oxide coating on polymer substrate under biaxial tension. *Thin Solid Films* 471, 209–217.
- Bockmeyer, M., Löbmann, P., 2007. Crack formation in TiO₂ films prepared by sol-gel processing: quantification and characterization. *Thin Solid Films* 515, 5212–5219.
- Bohn, S., Pauchard, L., Couder, Y., 2005. Hierarchical crack pattern as formed by successive domain divisions. I: temporal and geometrical hierarchy. *Physical Review E* 71, 123–139.
- Coster, M., Chermant, J.L., 1989. *Précis d'analyse d'images*. Presses du CNRS, Paris.
- Fortes, M.A., Pina, P., 1993. Average topological properties of successive neighbours of cells in random networks. *Philosophical Magazine B* 67, 263–276.
- Glenny, E., 1967. *Thermal and High-strain Fatigue*. The Institute of Metals and the Iron and Steel Institute, London.
- Jean, S., Miquel, B., Le Roux, S., Rézai-Aria, F., 1999. An investigation on heat checking of hot work tool steels. In: *Proceedings of the 5th International Conference on Tooling, Tool Steels of the Next Century*, University of Leoben, Austria, September 29–October 1, pp. 185–193.
- Kapur, J.N., Sahoo, P.K., Wong, A.K.C., 1985. A new method for gray-level picture thresholding using the entropy of the histogram. *Computer Vision Graphics and Image Processing* 29, 273–285.
- Korneta, W., Mendiratta, S.K., Monteiro, J., 1998. Topological and geometrical properties of crack patterns produced by thermal shock in ceramics. *Physical Review E* 57 (3), 3142–3152.
- Lantuéjoul, C., 1978. Grain dependence test in a polycrystalline ceramic. *Praktische Metallographie* 8, 40–50.
- Lauschmann, H., Wetzig, K., Menzel, S., Göbel, T., 2001. Fractography of crack networks in thin layers. *Materials Characterization* 46, 105–111.
- Lemoine, P., Marini, B., Meny, L., 1986. Etude de la fatigue thermique superficielle d'un acier inoxydable austénitique. In: *Journées de Printemps de la SF2M, Fatigue à Haute Température*, Paris, pp. 331–344.
- Maillot, V., Fissolo, A., Degallaix, G., Degallaix, S., 2005. Thermal fatigue crack networks parameters and stability: an experimental study. *International Journal of Solids and Structures* 42, 759–769.
- Medjedoub, F., 2004. Ph.D. Thesis, Ecole des Mines de Paris, Paris, France.
- Medjedoub, F., Dour, G., Rezaï-Aria, F., Hairy, P., 2005. Endommagement par faïençage des moules de fonderie sous pression en fatigue thermique: origines, mécanismes et approches. *Fonderie Fondateur d'Aujourd'hui* 244, 22–37.
- Norström, L.A., Svensson, M., Öhrberg, N., 1981. Thermal fatigue behaviour of hot work tool steels. *Metals Technology* 10, 376–381.
- Persson, A., Hogmark, S., Bergström, J., 2004. Simulation and evaluation of thermal fatigue cracking of hot work tool steels. *International Journal of Fatigue* 26, 1095–1107.
- Russ, J.C., 1995. *The Image Processing Handbook*, 2nd ed. CRC Press, Boca Raton.
- Serra, J., 1982. *Image Analysis and Mathematical Morphology*. Academic Press, London.
- Shorlin, K.A., de Bruyn, J.R., Graham, M., Morris, S.W., 2000. Development and geometry of isotropic and directional shrinkage-crack patterns. *Physical Review E* 61, 6950–6957.
- Velde, B., 1999. Structure of surface cracks in soils and muds. *Geoderma* 93, 101–124.
- Vogel, H.J., Hoffmann, H., Roth, K., 2005. Studies of crack dynamics in clay soil. I: experimental methods, results, and morphological quantification. *Geoderma* 125, 203–211.
- Wang, W., 2006. Image analysis of particles by modified Ferret method—best-fit rectangle. *Powder Technology* 165, 1–10.
- Wu, X., Xu, L., 2002. Computer aided evaluation of thermal fatigue cracks on hot-work tool steel. In: *Proceedings of the 6th International Tooling Conference, The Use of Tool Steels: Experience and Research*, Karlstad University, Sweden, September 10–13, pp. 657–666.
- Yan, A., Wu, K., Zhang, X., 2002. A quantitative study on the surface crack pattern of concrete with high content of steel fiber. *Cement and Concrete Research* 32, 1371–1375.
- Zsoldos, I., Szasz, A., 1999. Appearance of collectivity in two-dimensional cellular structures. *Computation Materials Science* 15, 441–448.