



HAL
open science

Magnetic domain structure and dynamics in interacting ferromagnetic stacks with perpendicular anisotropy

S. Wiebel, J. P. Jamet, N. Vernier, A. Mougin, J. Ferré, Vincent Baltz, B. Rodmacq, B. Dieny

► **To cite this version:**

S. Wiebel, J. P. Jamet, N. Vernier, A. Mougin, J. Ferré, et al.. Magnetic domain structure and dynamics in interacting ferromagnetic stacks with perpendicular anisotropy. *Journal of Applied Physics*, 2006, 100, pp.043912. 10.1063/1.2227481 . hal-01683817

HAL Id: hal-01683817

<https://hal.science/hal-01683817>

Submitted on 25 May 2019

HAL is a multi-disciplinary open access archive for the deposit and dissemination of scientific research documents, whether they are published or not. The documents may come from teaching and research institutions in France or abroad, or from public or private research centers.

L'archive ouverte pluridisciplinaire **HAL**, est destinée au dépôt et à la diffusion de documents scientifiques de niveau recherche, publiés ou non, émanant des établissements d'enseignement et de recherche français ou étrangers, des laboratoires publics ou privés.

Magnetic domain structure and dynamics in interacting ferromagnetic stacks with perpendicular anisotropy

S. Wiebel, J.-P. Jamet, N. Vernier, A. Mougin,^{a)} and J. Ferré
Laboratoire de Physique des Solides, UMR CNRS 8502, Université Paris-Sud, 91405 Orsay, France

V. Baltz, B. Rodmacq, and B. Dieny
SPINTEC, URA CNRS/CEA 2512, CEA-Grenoble Cedex 9, France

(Received 29 June 2005; accepted 1 June 2006; published online 23 August 2006)

The time and field dependence of the magnetic domain structure at magnetization reversal were investigated by Kerr microscopy in a structure consisting of a hard and a soft ferromagnetic Co/Pt multilayer stack with perpendicular anisotropy, separated by a thicker nonmagnetic Pt spacer layer. Large local inhomogeneous magnetostatic stray fields appear as soon as a nonuniform magnetic area exists within one of the stacks and induce a correlated domain structure within the other. The long range nature of this magnetostatic interaction gives rise to ultraslow dynamics even in zero applied field, i.e., it affects the long time domain stability. Due to this additional interaction field, the magnetization reversal under short magnetic field pulses differs markedly from the well-known slow dynamic behavior. Namely, in high field, the magnetization of the coupled harder layer has been observed to reverse more rapidly by domain wall motion than the softer layer alone. © 2006 American Institute of Physics. [DOI: 10.1063/1.2227481]

I. INTRODUCTION

Up to recently, magnetic recording media or spintronic devices have been essentially based on metallic thin film structures with in-plane magnetic anisotropy. Drastic limitations appear in associated patterned media when the dimension of magnetic elements goes down to nano-sizes. Perfect two states systems with perpendicular anisotropy are thus attractive since they are expected to allow an increase of the media storage density,¹ and improve the stability and the reliability of magnetic tunnel junction elements.² There is now a growing interest for investigating such ultrathin film structures with perpendicular magnetic anisotropy that may be used in multilevel magnetic recording³ or in exchange bias structures for designing magnetic random access memories or magnetic read heads.^{3–6} Multilevel perpendicular recording media structure can be realized by stacking ultrathin magnetic multilayers and separating them by nonmagnetic spacer layers; each magnetic multilayer then exhibits perfect square hysteresis loops with adjustable coercivity. The magnetic properties of ultrathin multilayers can be better adjusted than in single layers; in particular, thanks to prevailing interface contributions, the perpendicular anisotropy can be preserved up to relatively thick multilayers. Some magnetic memories are built with at least one hard and one soft ferromagnetic layer separated by a nonmagnetic spacer layer. The spacer layer is either metallic in giant magnetoresistance (GMR) or insulating in tunnel magnetoresistance (TMR) magnetoelectronic devices.

In all cases, the knowledge of static and dynamic behavior that outcomes from the coupling between magnetic layers is mandatory to improve the stability and reliability in real

systems. Only a few results have been reported so far on dynamics of the magnetization reversal except for coupled in-plane magnetized layers.⁷ From a general point of view, two situations have to be considered, both for systems with in-plane or out-of-plane anisotropy: the interaction between two magnetically saturated layers, and the far more complex case of an inhomogeneous interaction between domain structures present in each layer.

It is known that either in-plane or out-of-plane magnetically saturated layers separated by a pinhole free nonmagnetic metallic spacer layer are coupled by Ruderman–Kittel–Kasuya–Yosida (RKKY) oscillatory interlayer exchange interaction that decreases when increasing the spacer thickness.^{8–10} Moreover, a conformal magnetostatic interlayer coupling, due to the so-called orange peel or Néel effect, can be induced by correlated roughness of ferromagnetic-spacer interfaces;^{11–13} this interaction also vanishes progressively when increasing the spacer layer thickness. The sum of the magnetostatic and exchange interactions induces a bias shift of the hysteresis loop, which is relatively small for a spacer layer thickness of a few nanometers.¹³ Depending on its sign with respect to the initial saturation direction, the bias field, H_b , increases or decreases the nucleation field value of the soft layer.

Magnetostatically induced stray fields become more efficient in nonuniformly magnetized films, i.e., during the magnetization reversal process or in nonfully saturated structures. Their study is thus a major issue for basic physics as well as for applications, as already shown in GMR or TMR in-plane magnetized structures. For example, this coupling allows explaining why pseudo-spin valves or double coercivity tunnel junction's memories may be erased progressively since the hard layer demagnetizes with repeated reversal of the soft layer by field cycling.¹⁴ For in-plane magnetized structures, it has been shown that this relaxation phenom-

^{a)}Author to whom correspondence should be addressed; electronic mail: mougin@lps.u-psud.fr

enon comes from the replication of the soft layer domain walls inside the hard layer and vice versa.¹⁵ In other words, even under moderate fields, mirrored domains can be stabilized in the hard and soft layers with in-plane anisotropy through the mutual imprint of domain walls.¹⁶ In that case, the stray field created by Néel walls in one layer lowers the nucleation field in the other one. Thus, some questions obviously arise for ultrathin film coupled structures with perpendicular anisotropy: (i) Have we such domain replication when cycling the field, since domain walls might not be of the same type? (ii) Is a created domain structure stable enough at long time to ascertain reliability? This requires to consider slow “creep” dynamics^{17,18} in the data analysis. (iii) Is the role of interactions the same at all time scales? To our knowledge, these two last points were not investigated so far even in systems with in-plane anisotropy.

The aim of this article is to treat magnetostatically induced phenomena during magnetization reversal in a structure consisting of a hard and a soft ferromagnetic Co/Pt multilayer stack with perpendicular anisotropy, separated by a thicker nonmagnetic Pt spacer layer. As for systems with in-plane magnetic anisotropy, the room temperature magnetic domain structure in the two stacks was visualized by magneto-optical microscopy.¹⁹ This method allows investigating time dependent phenomena, related to domain nucleation and wall propagation.¹⁸ We have previously reported that the magnetization reversal of the soft magnetic stack is influenced by the magnetic domain state in the hard one through interlayer magnetostatic interactions: a magnetic domain in the hard stack at remanence can be decorated by a ring of opposite magnetization in the soft stack.²⁰ In the present article, the dynamics of expansion or shrinking of this ring under the application of a weak field will be investigated and interpreted in the frame of the domain wall motion creep theory. Moreover, we will focus on domain mirroring between layers. The associated slow dynamics of the soft stack and fast response of both stacks will be studied to give some insight into the long-term stability and writing process in memories, respectively.

II. SAMPLE PROPERTIES

A. Preparation and general magnetic properties of the bi-stack structure

We studied the $S_H/\text{Pt}(4\text{ nm})/S_S/\text{SiO}_2/\text{Si}$ film structure, consisting of a hard S_H : $[\text{Pt}(1.8\text{ nm})/\text{Co}(0.6\text{ nm})]_4$ and a soft S_S : $[\text{Co}(0.6\text{ nm})/\text{Pt}(1.8\text{ nm})]_2$ ferromagnetic multilayer stack, separated by a Pt(4 nm) spacer layer, and deposited on a thermally oxidized silicon substrate. The sample was prepared by dc magnetron sputtering at room temperature under $2.5 \cdot 10^{-3}$ mbar Ar pressure, with rates of about 0.05 nm/s.²⁰ The base pressure was around $4 \cdot 10^{-8}$ mbar.

In this section, we report on the magnetism of the $S_H/\text{Pt}(4\text{ nm})/S_S$ bi-stack sample. The Pt(1.8 nm) spacer within a stack is thin enough to preserve a large enough ferromagnetic exchange coupling ($H_{\text{ex}} \approx 100$ Oe) that promotes a magnetic cooperative behavior and perpendicular anisotropy within S_H and S_S .²¹ In counterpart, the rather large inter-stack Pt(4 nm) spacer layer thickness provides only a

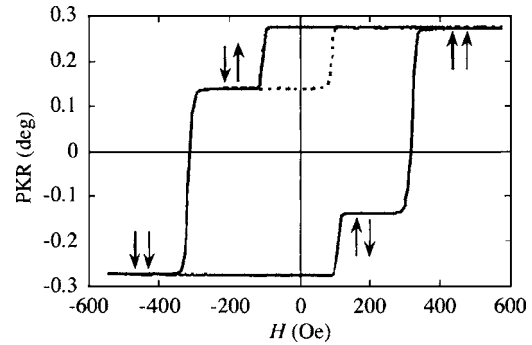


FIG. 1. Room temperature polar Kerr rotation (PKR) hysteresis loop (—) and minor loop (---, soft stack) of the bi-stack structure. Field sweeping rate: 500 Oe/s. The arrows (up or down) represent the relative orientation of the magnetization in each stack.

negligible RKKY interaction between S_H and S_S .¹³ The relatively high positive value of the anisotropy constant $K = K_V + K_S$, respectively, equal to 1.71×10^6 and 1.29×10^6 erg/cm² for S_H and S_S , gives rise to a net perpendicular magnetic anisotropy. The relative orientations of the magnetizations in the two stacks are discussed in the following and expressed as up or down. As an illustration, up-up means that the hard S_H magnetization is up and that the soft S_S magnetization is also up. In figures, arrows (up or down) represent the relative orientation of the magnetization in each stack. As expected, polar Kerr rotation hysteresis loop in perpendicular applied field (Fig. 1) shows two successive jumps at $H_C^S = 106$ Oe, and $H_C^H = 320$ Oe, respectively, for the soft and hard layer.²⁰ These values are rather close to the coercive fields we deduced in the corresponding single stack samples, $S_S/\text{SiO}_2/\text{Si}$ and $S_H/\text{Pt}(4\text{ nm})/\text{SiO}_2/\text{Si}$, when measured in the same dynamic conditions (field sweeping rate = 500 Oe/s). Magnetization reversal dynamics in the bi stack are evidenced by an increase of both H_C^S and H_C^H of 30 Oe per decade for a change in field sweeping rate between 0.5 and 50 kOe/s. As previously mentioned,²⁰ after saturating the sample in a positive field and describing a minor hysteresis loop (Fig. 1), the negative coercive field value is found larger than the positive one. The corresponding bias field, $H_b = 8$ Oe, is assigned to an orange peel magnetostatic interaction that favors a parallel alignment of the magnetization in both stacks and delays nucleation when decreasing the field from a positive saturated state. Note also that due to the absorption of the probing light, the relative amplitude of the magneto-optical Kerr effect (MOKE) signals related to each stack is not equal to the ratio of their thickness.

As reported in our previous letter,²⁰ an up-up and down-down ribbon-like domain structure is observed in the ac-demagnetized state of the sample. The absence of intermediate (down-up or up-down) magnetization states proves the existence of large local inter-stack magnetostatic interactions that induce a perfect ferromagnetic matching of domains and walls in S_H and S_S .

B. Domain structure and wall dynamics in S_S

The field-induced domain patterns have been imaged by high-resolution polar magneto-optical Kerr effect (PMOKE) microscopy (resolution: 0.4 μm) using a green light-emitting

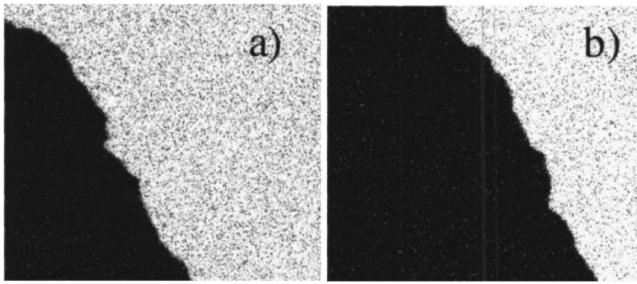


FIG. 2. Domain expansion in S_5 : (a) initial domain state after switching off the field, (b) new snapshot after the application of a field pulse with magnitude $H = -74$ Oe and duration $t = 6$ ms, after switching off the field.

diode (LED) light source. In our experiments, the sample was first magnetized in a positive field H , and the reference magneto-optical image in the up-saturated state recorded. The sample was subsequently submitted to a fixed negative field $-H$. To investigate dynamics, two distinct procedures have been used for recording PMOKE images of field-induced states:

- For most of the following experiments, and when nothing is indicated, we used the procedure (i): the field was switched off to zero to observe the frozen remanent state associated with the field $-H$, applied during a certain time t . Then, PMOKE snapshots of the frozen remanent final state are recorded for increasing times t .
- In the case of ultraslow dynamics, when the wall position does not move much during the image acquisition time, a different procedure (ii) was sometimes used: PMOKE snapshots of the domain pattern were recorded during the application of a field $-H$ for different times t . In order to improve the quality and contrast of the magnetic patterns, the images of the reference magnetically saturated state and of the final remanent or in-field states are accumulated on 16 bits and subtracted from each other by image digital processing.

As in the single stack S_5 sample, the field-induced magnetization reversal of S_5 from the saturated up-up spin state to the down-up state in the bi-stack structure (in the following down-up or up-down states will correspond to S_5 in the down or up-magnetized state and S_H in the up or down-magnetized state, respectively) occurs by quite-uniform domain wall propagation initiated at only a few nucleation sites (Fig. 2).¹⁸ As found for the single stack S_5 sample, after nucleation, the wall moves quasi-instantaneously (the lag time is estimated here to be smaller than $0.1 \mu\text{s}$) as soon as the field is applied. At low field, the wall roughness is always weak, allowing to describe its motion in the frame of the creep theory, generally valid for the motion of a quasi-one-dimensional interface in a weakly disordered medium.^{17,18} The wall is then pinned cooperatively by a large assembly of weak defects. In that case, the low field dependence of the mean wall velocity, v , is expressed by

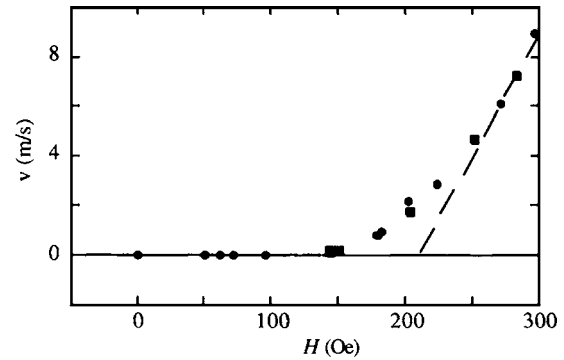


FIG. 3. Variation of the mean domain wall velocity with H for the S_5 stack in the bi-stack structure.

$$v = v_0 \exp[-A(H_{\text{crit}}/H)^{1/4}], \quad (1)$$

where H_{crit} stands for the critical depinning field, and A depends of the degree of disorder. At very low field, the domain wall moves by rare and sudden events involving rather large Barkhausen volumes;²² thus, only the mean wall velocity, over extended length and time scales, has a physical meaning. In the bi-stack structure, the $v(H)$ variation of the wall in S_5 is shown on Fig. 3. The depinning field, H_{crit} , that separates the thermally activated regime from the viscous regime, is estimated here to be 210 Oe. At low field, in the creep regime, the typical mean domain wall velocity is $1.5 \mu\text{m/s}$ for $H = 39$ Oe and $2.2 \times 10^{-5} \mu\text{m/s}$ for $H = 16$ Oe. The plot of v versus $H^{-1/4}$ at low field (Fig. 4) fits well the creep expression (1). One deduces $A(H_{\text{crit}})^{1/4} = -103$ and $\ln(v_0) = 30.2$. One generally expects that the creep law fails at large field,¹⁷ i.e., here above 160 Oe, a value that obviously remains still below $H_{\text{crit}} = 210$ Oe (Fig. 4).

As also found in the single stack S_5 sample, and more generally in other ultrathin films with perpendicular anisotropy, the final sequence of the slow magnetization reversal in S_5 ($H < 52$ Oe) brings into play regions with nonreversed up-magnetized channels, also called vestigial 360° winding walls (Fig. 5).²³ They are built by two distinct mechanisms. In the first one, a few domains are nucleated far away from each other and after expansion, their walls come close together, forming a connected array of channels that is stabilized by intralayer magnetostatic forces [Fig. 5(a)].²⁴ For the second mechanism, as soon as a wall is touching an extrinsic defect during its motion, it coils around it to finally form two

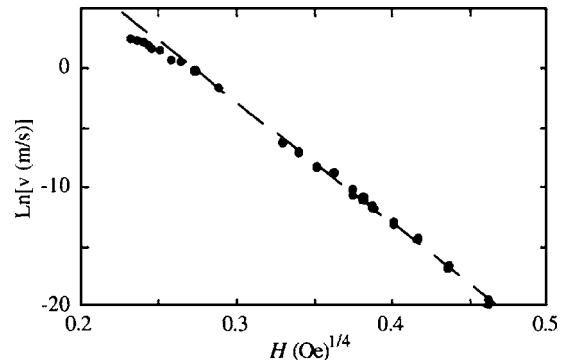
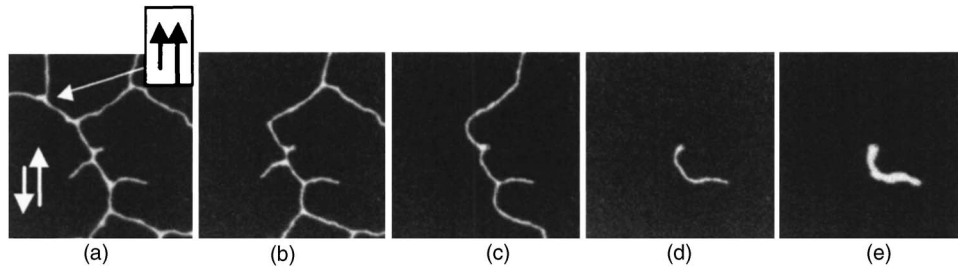


FIG. 4. Creep plot of the mean domain wall velocity vs $H^{1/4}$ for the S_5 stack in the bi-stack structure.



facing walls preferentially oriented along the mean displacement vector. This leaves up-magnetized channels that are pinned at one of their extremities [Fig. 5(a)]. For the first type, the facing walls connected structure remains stable over a long time since it is stabilized by a repulsive interaction. Second type up-magnetized channels can shrink after a time delay through their sudden thermally activated depinning on the defect located at its extremity [Fig. 5(b)]. Since the magnetostatic interaction is weak for such ultrathin magnetic stack, a small increase of the field value is sufficient to wash out the second type of up-magnetized channels [Fig. 5(c)] leaving only a short filamentary up domain [Fig. 5(d)]. Again, this small domain will disappear later by depinning at one of its extremities. Thus, at low field sweeping rate, and as globally shown on the hysteresis loop (Fig. 1), these vestigial domains in S_S will have absolutely no incidence on the initiation of the magnetization reversal in S_H . Starting from the situation depicted in Fig. 5(d) and reversing the field to a positive value, one observes that the small subsisting nonreversed channel [Fig. 5(d)] acts now as a nucleated area from which an up-magnetized domain [Fig. 5(e)] starts to expand by wall motion. Repeating this procedure, but starting now from a down-saturated S_S state prepared under a larger field of -100 Oe, we evidenced that the nucleation of S_S up-magnetized domains in positive field occurs at places that are noncorrelated with vestigial 360° walls [Figs. 5(a)–5(d)].

III. DIPOLAR COUPLING AND DOMAIN DECORATION IN THE REMANENT STATE

After saturating the sample magnetization in the up-up state, a short negative field pulse was applied to entirely reverse the magnetization downwards in S_S and to initiate the reversal of small down-down magnetized domain in S_H . Just after switching off the field to zero, the down-down (black) domain is unchanged, but an up-up (white) magnetized decoration ring is found to expand rapidly (in a time shorter than the image acquisition time of some seconds) around it over a short distance ($\sim 1 \mu\text{m}$) (Fig. 6). Nonreversed matched up-up (white) magnetized channels are also maintained inside the central down-down (black) domain. These narrow channels, limited laterally by facing walls, are stabilized by the intra-stack dipolar interaction,^{23,24} but as demonstrated later, much more by stronger local inter-stack magnetostatic stray fields. Their width (Fig. 6) is overestimated because of the limited optical resolution of our setup; their physical width is smaller than $0.4 \mu\text{m}$. The jaggedness of the domain

wall in S_H is also duplicated instantaneously on the S_S wall by the strong inter-stack magnetostatic interaction.

The most intriguing feature here is surely the appearance of this up-up magnetized (white) ring surrounding or “decorating” the central down-down (black) domain after switching off the field to zero. Due to a weaker pinning in the soft stack S_S , the external wall of the ring becomes smoother than the internal coupled one. Apart from the inside of the decoration ring, the S_S magnetization points down, providing a down-up (gray) state.

It has to be emphasized that the creation of a regular decoration ring needs sometimes a special preparation procedure. As discussed later, after switching off the field, the up-up (white) ring state is initiated first in channels where local magnetostatic fields are more efficient (Fig. 6). The picture of a regular expansion of the up-up state from channels to form a domain ring is not always fulfilled at short experimental time scale. The propagation of the wall, initially formed inside a channel, can be pinned at points located just around the black domain. Such a situation is depicted in Fig. 7, where the white ring is only present over a limited portion of the black domain perimeter. In order to

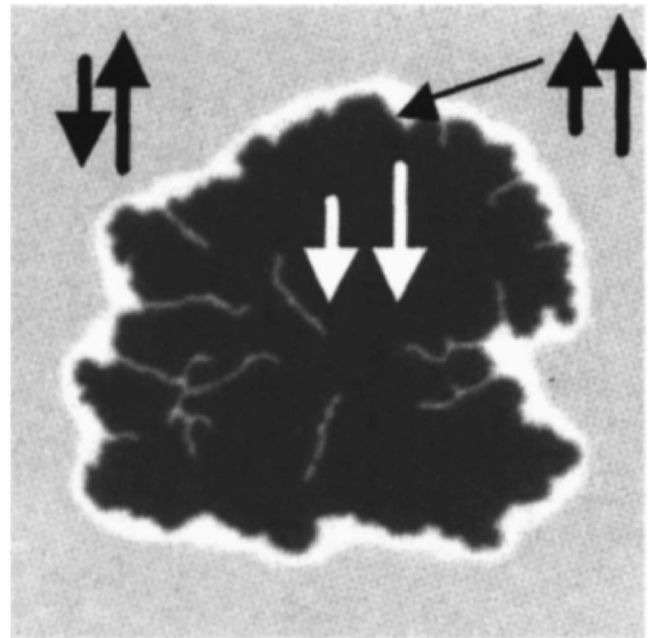


FIG. 6. PMOKE snapshot of the remanent magnetized state (observed 2 min after switching off the field to zero) imaged after applying a perpendicular field pulse $H=-235$ Oe during 5 s from a positive saturated single domain state. Image size $30 \mu\text{m} \times 30 \mu\text{m}$.

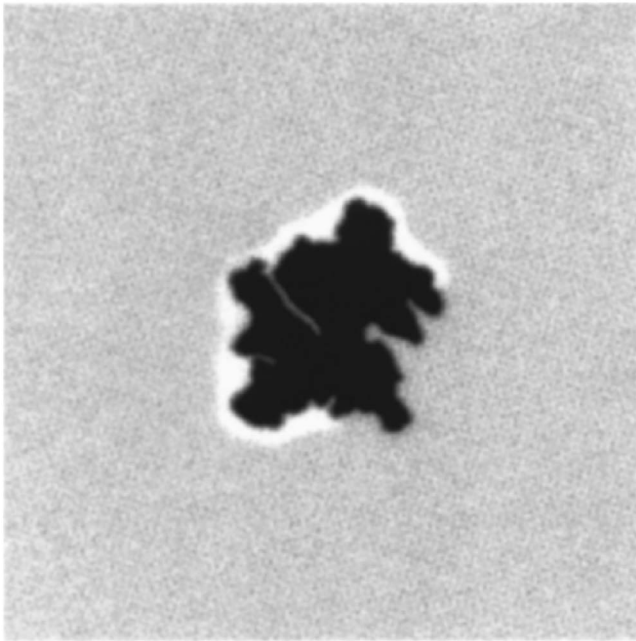


FIG. 7. PMOKE image ($30\ \mu\text{m} \times 30\ \mu\text{m}$) of the domain structure in the remanent state, observed 1 h after the application of a pulse of field ($H = -272\ \text{Oe}$) during 150 ms. Image size $30\ \mu\text{m} \times 30\ \mu\text{m}$.

surely generate a uniform ring around the black domain in the remanent state, one applies first a small positive field ($\sim 20\ \text{Oe}$) to expand the ring, then a negative field ($H \sim -70\ \text{Oe}$) to shrink it, and finally switch off the field.

A simple sketch of the formation of the decorated ring at remanence, excluding the channel formation, is depicted in Fig. 8. Let us start from the bi-stack domain state in a large negative field [Fig. 8(a)]; S_S is in a single down-magnetized state and a S_H down-magnetized domain is formed above. Just after switching off the field to zero, large magnetostatic fields act on the S_S spin state just below the up-down domain boundary in S_H . As a consequence, a down-magnetized S_H mirrored domain state is formed in S_S and an up-magnetized decoration ring surrounds it [Fig. 8(b)]. While the central down-down domain is self-stabilized, the decoration ring expands rapidly as long as the stray field remains large enough [Fig. 8(c)]. Experiments show that the decoration ring rapidly reaches a width of about $0.8\ \mu\text{m}$ just after switching off the field (Fig. 6). This effect is essentially due to inter-stack dipolar stray fields that vanish rapidly in S_S with the distance x from the border of the S_H domain. The decoration ring is supposed to grow by propagation of the external wall, under the conjugated action of the static “orange peel” coupling, the magnetostatic stray field due to the finite size of the S_H domain, and the intra-layer magnetostatic interaction in S_S ,²⁰ both favoring spin alignment in S_S below S_H . More precisely, as soon as an up-magnetized state nucleates in an open channel of S_S , it propagates rapidly and tends to form a decoration ring around the black domain.

For a complementary approach with respect to our recent letter on the subject,²⁰ and for a more quantitative approach, one considers the effect of the lateral variation of the resulting magnetostatic stray field, $H_{st} = H_{op} + H_z$ (H_z being the sum of intra-stack and inter-stack magnetostatic fields), on a wall

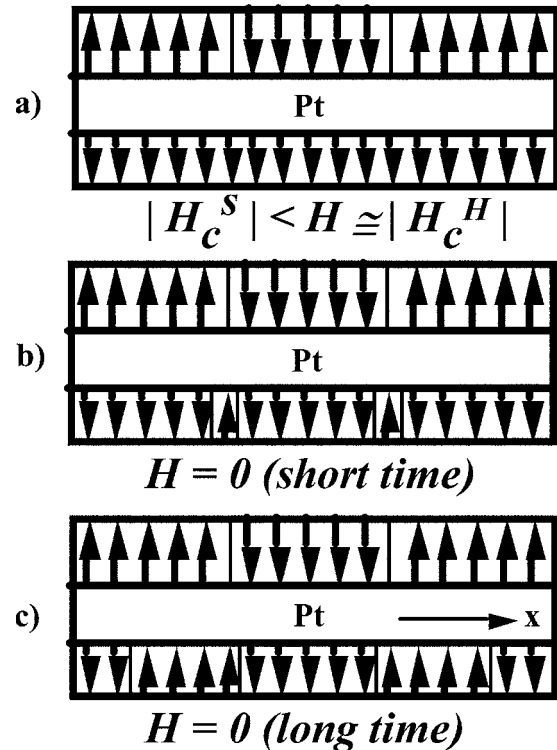


FIG. 8. Sketch of the cross-section magnetic arrangement in the S_H (top stack) and S_S (bottom stack): (a): after the initiation of a S_H domain, (b): expected remanent state, just after switching off the field, (c): expected remanent state after waiting a long time. The up-up ring is expanding through the down-up state. H_c^S and H_c^H are, respectively, the coercive field of S_S and S_H .

inside S_S . This wall stands at the lateral distance x from the S_H domain border for a channel-free down-down domain, or else from the base of a long channel (here with a typical length taken equal to $1\ \mu\text{m}$) (Fig. 9). Calculations have been performed for two superimposed $20\text{-}\mu\text{m}$ -square down-magnetized domains in S_S and S_H , or nonreversed spin-up channels in S_H with different widths e (Fig. 9). They integrate effects due to each cobalt layer in the S_H stack. H_z can reach locally high values ($H_z = 800\ \text{Oe}$ for $x \sim 8\ \text{nm}$, i.e., close below the border of the S_H domain [Fig. 10(a)]. Large stray field values ($H_z > 400\ \text{Oe}$) act only over a restricted area in S_S , with width $\sim 30\ \text{nm}$. This width has to be compared with the domain wall width estimated to $\Delta = 17\ \text{nm}$. Accounting that domain creation needs to overcome the wall bending energy, H_z has to be large enough over extended regions ($> 100\ \text{nm}$) for initiating a stable reversed up-magnetized domain in S_S . In agreement with this scheme, we



FIG. 9. Schematic upper view of a square down-down (black) magnetized domain with a nonreversed channel of width “e.” The distance x is taken either from the square side or the base of the channel.

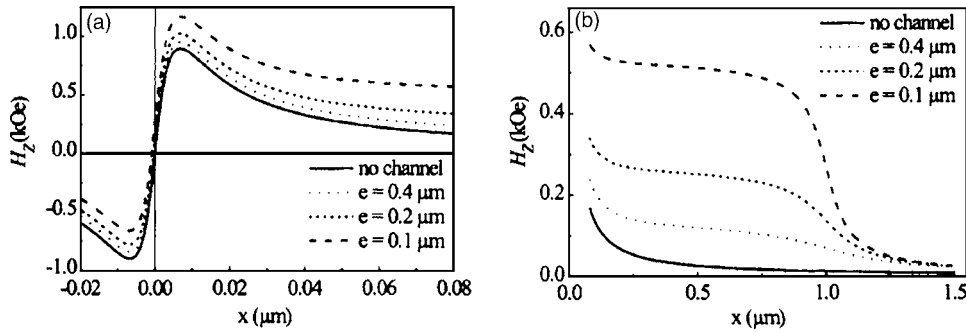


FIG. 10. Variation of the perpendicular component H_z of the stray field with the distance x from the border of the S_H domain or the base of channels with different width e . (a) At short scale, apart the limit of the S_H domain for $x=0$. (b) at longer scale, inside the channels.

experimentally found that nucleation takes place first inside channels, since the largest stray fields H_z are acting there over the full channel length.

Since H_z is highly negative just below the S_H domain [Fig. 10(a)], mirroring spin-down domains are highly stabilized (Figs. 6 and 8). Under the action of H_{st} , the decoration ring expands by propagation of its external wall in S_S [Figs. 8(b) and 8(c)] at the expense of the down-up state. It slows down rapidly since the external wall is submitted to a stray field H_z that decreases with x [Fig. 10(b)]. Neglecting the orange peel coupling, the x dependence of the perpendicular component is the sum of the nonuniform intra- and interlayer stray fields, H_z . It can be fitted with a good approximation by the $H_z \propto b/x$ law with $b=19$ Oe μm (Fig. 11). The resulting interaction field acting on the external wall thus decreases rapidly with the distance x as $H_{st}(x)=b/x$. Moreover, the mean wall velocity in the presence of this weak resulting field is expected to slow down drastically when H_{st} tends to zero, according to the expression

$$v(x) = v_0 \exp[-A[H_{crit}/H_{st}(x)]^{1/4}]. \quad (2)$$

Expression (2) is proposed by analogy to the creep expression (1).¹⁷ Assuming $H_{op}=0$, the time “ t ” dependence of the width “ x ” of the decorated ring in zero field can be deduced

$$t = 4/(v_0 \alpha^4) [6 - \exp(\alpha x^{1/4})(6 - 6\alpha x^{1/4} + 3\alpha^2 x^{1/2} - \alpha^3 x^{3/4})], \quad (3)$$

where $\alpha = A(H_{crit}/b)^{1/4}$. The calculated variation of $x(t)$, i.e., the time dependence of the mean width of the decorated ring, just after switching off the field at $t=0$, is plotted in Fig. 12. The experimental data points, deduced from image processing, fit the calculated $x(t)$ curve quite well when assuming $H_{op} \approx 0$. The high resolution of our charge coupled device camera enables us to estimate the position of the wall in S_S , with an accuracy of $0.1 \mu\text{m}$. The width x of the decorated ring reaches the value $(0.8 \pm 0.1) \mu\text{m}$ after $t=2$ min [Fig. 12(a)], and afterwards evolves very slowly at a long time [Fig. 12(b)]. Since H_{st} is never equal to zero, the wall continues to move over infinite times in the remanent state; in other words, it never reaches an equilibrium position.

IV. DOMAIN DECORATION UNDER MAGNETIC FIELD

Starting from the domain pattern structure shown in Fig. 6, the width of the up-up magnetized decoration ring can be tuned by applying an additional field (Fig. 13). In these experiments, the field is maintained during the image acquisi-

tion (case (ii) described in Sec. II B). Provided it displays the same positive sign as H_{st} , even a weak field ($H=7$ Oe) helps significantly to propagate the external wall [Fig. 13(a)], giving an additional expansion of the decoration ring. In counterpart, a negative field tends to shrink the ring [Fig. 13(b)] since it competes with H_{st} . Since H_{st} is strongly enhanced when the wall approaches the S_H domain boundary, it becomes difficult to completely shrink the external ring wall. For high negative fields ($H < -100$ Oe), only channels maintain a white up-up spin configuration. In spite of a rather large applied negative field ($H < -200$ Oe), these channels continue to maintain their up-up magnetized state in agreement with results presented in Fig. 10(b). Dynamics can be well understood by replacing H_{st} by $H_{st} + H$ in expression (2), and considering again the variation of H_{st} with the wall position x . Typical experimental data on the time dependence of the width of the decoration ring in positive or negative applied field are reported in Fig. 14. At short time, the fast wall motion is due to efficient magnetostatic interactions (i.e., H_{st}). At long time, for $H > 0$, since $H_{st} \approx 0$, the quasi-linear dependence of x with t is essentially driven by the applied field (usual creep motion), and for $H < 0$, the wall is rapidly pushed down and stopped at the S_H domain border.

V. PROOF OF THE STRONG MIRRORING EFFECT: SHRINKING OF THE DOWN-DOWN DOMAIN STATE IN POSITIVE FIELD

The goal of the study reported in this section is to check the strength of the magnetostatic coupling between the mirrored domains in S_S and S_H , prepared as above (Fig. 6). For that purpose, we determined the evolution of this state with an applied positive magnetic field. After preparing a down-

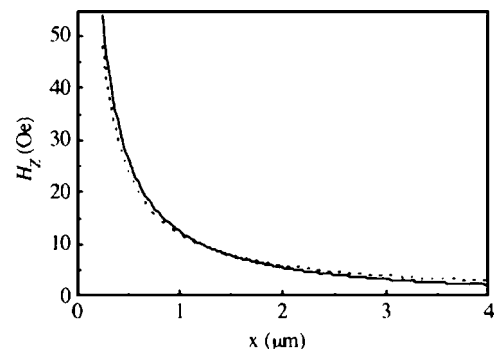


FIG. 11. Variation of the calculated stray field H_z acting on the external wall in S_S as a function of the distance x (—), and its best fit with the b/x law (---).

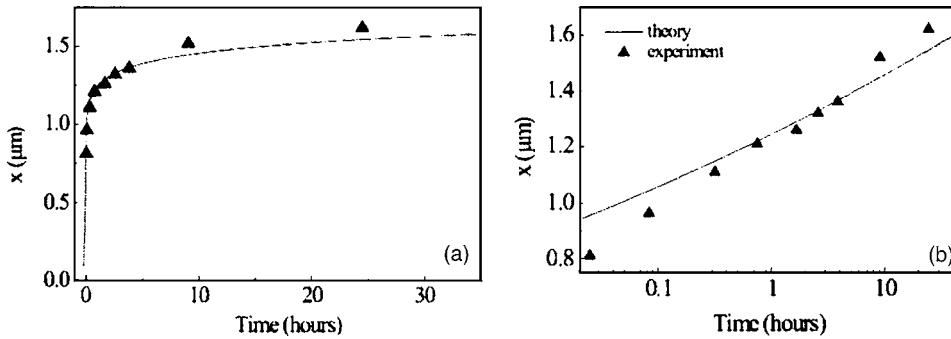


FIG. 12. Calculated time dependence of the mean width x of the decorated ring in a linear (a) and a semilogarithmic (b) plot. The position of the data points \blacktriangle is compared to the calculated curve.

down (black) domain, a positive (22 Oe) magnetic field pulse was applied during 10 s. The obtained frozen remanent magnetic state was recorded (Fig. 15). This procedure was repeated for increasing field values up to 380 Oe, giving successive snapshots of the magnetic domain state (Fig. 15). At low field, the central (black) domain is not modified, and as mentioned previously, one observes the expansion of the up-up magnetized decoration ring. S_S is rapidly reversed in its up-spin state, and for $H > 45$ Oe, no up-down state survives. This proves again the role of large local dipolar fields for stabilizing the down-down (black) domain state. Above 100 Oe, the up-up (white) channels broaden and new up-magnetized areas appear inside the down-down (black) state. As expected from the inspection of the H_{st} profile (Fig. 10), when adding a large enough positive field contribution, the channel broadening and the nucleation of down-down internal domains are favored. This can be explained since either the magnetostatic stray field becomes partly compensated by the applied field at the center of the black domain or at wall boundaries. Nevertheless, the nucleation inside the black domain often needs extra energy that is not necessarily brought by a small field. At a large enough field, new channels can be formed inside the black domain from the abovementioned reversed areas. As a result, in a large field ($H \approx 167$ Oe) (Fig. 15), the down-down state looks like a complex array of connected narrow ribbons; this structure is still stabilized by the remaining inter-stack local interactions. We could be tentatively tempted to compare this behavior with the field-induced domain phase diagram in highly anisotropic perpendicular films that is monitored by the intra-layer

magnetostatic interaction,²⁵ but in our case, the most efficient effect comes from the interlayer magnetostatic coupling. The remaining magnetic (black) ribbons disappear progressively with increasing H , but in a nonuniform manner by successive jumps resulting from local depinning; during this process topological rearrangements are also involved. The mirroring effect between S_S and S_H domains or ribbons is so efficient that it acts up to the complete disappearance of the structure. As expected from the inspection of the S_H hysteresis loop, the magnetization reversal is completed at 380 Oe to leave a saturated up-up domain state.

VI. MAGNETIZATION REVERSAL IN HIGH FIELD

After saturating the bi-stack sample in a positive field and then slowly varying the applied negative field, the magnetization of S_S becomes completely reversed down for $H \approx -100$ Oe, i.e., well before to nucleate the first down-magnetized domains in S_H , that arise around -220 Oe. We found that there is no correlation between nucleation sites in S_S and S_H , nor with the position of the last vestigial 360° walls in S_S . Under $H \approx -235$ Oe, applied during 5 s, a few down-magnetized domains with jagged walls, develop in S_H at the expense of the uniformly up-magnetized state. We found that down-down magnetized domains expand in the down-up state at a constant mean velocity, but only after a certain lag time τ that increases when reducing the field (for example, $\tau \approx 70 \mu\text{s}$ for $H = -355$ Oe). Thus, velocity mea-

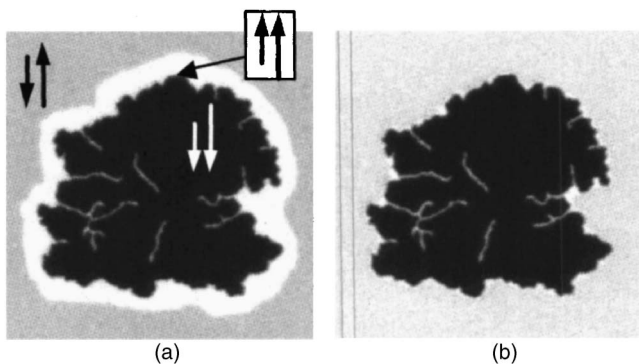


FIG. 13. PMOKE snapshots obtained from the initial demagnetized domain state depicted in Fig. 6, (a): after applying a positive magnetic field $H = 7$ Oe during 2 min, and freezing this state in zero field, (b): in the presence of a negative field, $H = -77$ Oe, applied during 2 min. The image size is $30 \mu\text{m} \times 30 \mu\text{m}$.

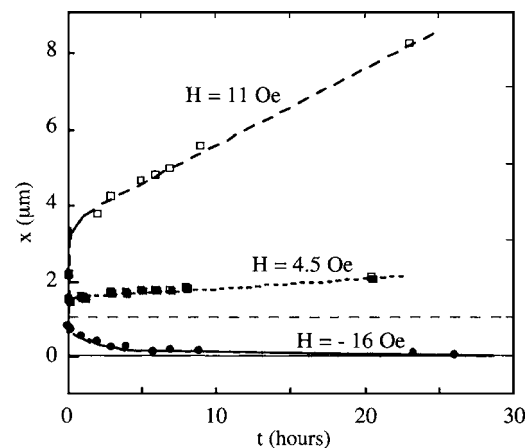


FIG. 14. Measured time dependence of the mean external wall displacement of the decorated up-up magnetized ring for two positive and one negative values of the perpendicular applied field. The x value refers to the remnant ($H=0$) wall position measured at long time ($t=3$ h) (Fig. 8). The lines are guides for the eyes.

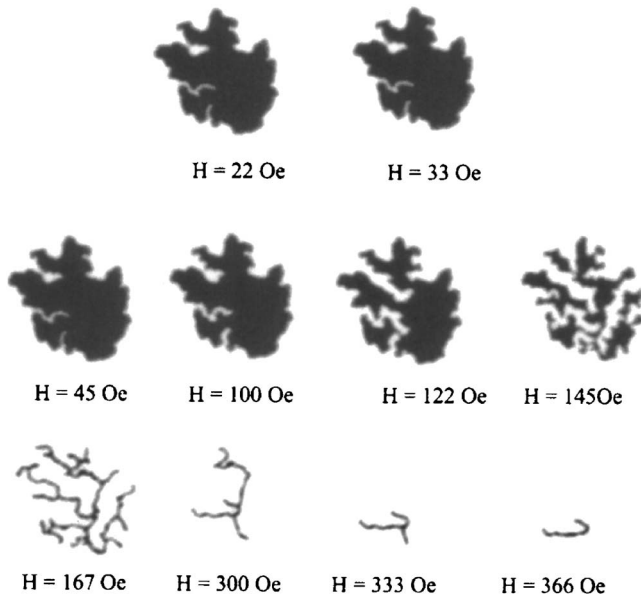


FIG. 15. Shrinking of the down-down (black) domain structure in positive field, starting from an initial state obtained under a field pulse $H = -194$ Oe, applied during $12 \mu\text{s}$. For all snapshots, the indicated field was applied during 10 s. Image size: $30 \mu\text{m} \times 30 \mu\text{m}$ for the two first snapshots, $20 \mu\text{m} \times 20 \mu\text{m}$ for the others.

measurements are not performed just after the switching of the field but as soon as the wall moves at constant velocity ($t > \tau$). Curiously, in spite of the presence of jagged walls, from the variation of the mean domain expansion velocity versus H , we can still define thermally activated and viscous regimes below and above $H_{\text{crit}} = 395$ Oe.

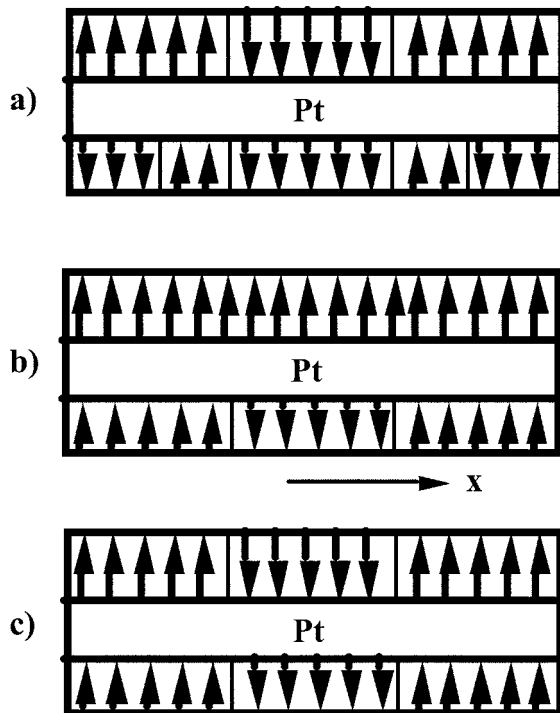


FIG. 16. Cross view of the domain configuration when applying on a saturated up-up state: (a) a relatively small negative field during a long time [idem as Fig. 8(a)], (b) a larger negative field pulse with the formation of only a reversed domain in S_S , (c) a larger negative field pulse with the formation of a mirrored down-down magnetized domain coupled state.

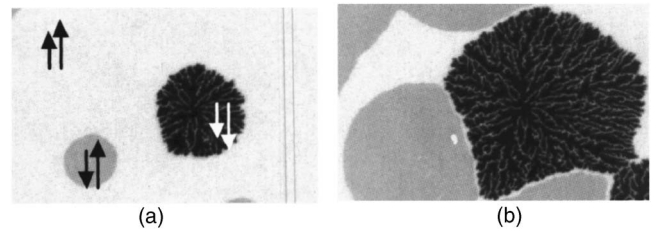


FIG. 17. Snapshots of the remanent domain state after saturating first the sample in a positive field and applying a negative pulse of field $H = -540$ Oe with (a) 600 ns duration, (b) after an additional pulse of 600 ns duration. Note on (b) the stabilization of up-up (light gray) magnetized channels at the boundary between down-up and down-down domains. The nucleation of the down-up or down-down domains is located at their center. The radial orientation of the up-up magnetized channels is clearly visible. Image size: $66 \mu\text{m} \times 42 \mu\text{m}$.

Now, under a short high field ($H = -458$ Oe) pulse, we demonstrated experimentally that the magnetization reversal process differs markedly from that found above in the moderate field case. Remember that in moderate field, the magnetization is fully reversed down in S_S , before forming decorated mirrored reversed domains in S_S and S_H [Fig. 16(a)]. Under a short high field pulse, the spin-up state in S_S can be maintained a long enough time to allow a quite simultaneous nucleation of a few single down-magnetized reversed domains in S_S , [Fig. 16(b)], as well as mirrored down-down reversed domains in S_S and S_H [Fig. 16(c)]. In other words, these two states are then generated from an initially up-up single domain state [Fig. 17(a)]. It is interesting to see that the two last types of domains can be nucleated at the same time at different places inside the film. Fortunately, even at such high field, the nucleation rate in the two S_S and S_H stacks is still rather low, so that one can investigate both the development of down-magnetized domains in S_S (gray) keeping an S_H up-magnetized (light gray) state [Figs. 16(b) and 17(a)], and of mirrored down-magnetized (black) domains in S_S and S_H [Figs. 16(b) and 17(a)]. We found that the motion of the rough double wall separating the down-down and the up-up magnetized state [Fig. 16(c)] is faster than that found previously when starting from a down-up spin state [Fig. 16(a)]. This is related to a decrease of the measured critical depinning field, H_{crit} (210 Oe rather than 395 Oe); this phenomenon can be explained by the reduction of the inter-stack magnetostatic field at domain boundaries between spin configurations shown in Figs. 16(a) and 16(c). Moreover, the mean velocity of walls separating the down-up (gray) and up-up (light gray), or the down-down (black) and up-up (light gray) states, has the same order of magnitude in a field of -540 Oe; this gives rise to two different types of domains with close size [Figs. 16(a) and 16(b)]. This is quite puzzling at first sight since the coercivity measured at low frequency differs markedly for the soft (S_S) and the hard (S_H) stacks. In spite of the lower depinning field for S_S , we demonstrated that this phenomenon can be explained by a higher domain wall velocity for coupled S_H and S_S stacks than only in S_S when $|H|$ becomes larger than 380 Oe. When the two types of domain approach each other [Fig. 17(b)]; one observes a slowing down of their wall motion. They do not merge at long time in zero field, preserving a narrow inter-

mediate up-up magnetized region stabilized by the inter-stack magnetostatic coupling, in the same way as the decoration ring. This is consistent with our above scheme and calculations.²⁰

So, under a short high field pulse, nucleation of down-up (gray) or down-down (black) domain states can appear at the same time, and the reversal of a coupled S_H and S_S domain state by wall motion can be easier than that in S_S alone. This does not contradict the fact that, at low field, the soft layer reverses its magnetization more easily than the hard layer.

VII. CONCLUSIONS

We have reported on magnetic domain structures and dynamics in interacting ferromagnetic stacks (or layers) with perpendicular anisotropy. As for in-plane magnetized systems, interlayer magnetostatic stray fields can perturb the functioning of GMR or TMR devices. However, the mutual imprint of domains for in-plane magnetized films is ascribed to the stray field created by Néel walls.¹⁵ In contrast, in films with out-of-plane magnetic anisotropy, not only Bloch walls play a role but this effect depends strongly of the finite domain size. Strong stray fields produced by a small down-magnetized domain in the hard stack favor the formation of a mirrored ferromagnetic domain in the soft layer, and even create an up-magnetized decoration ring in the soft layer at remanence. By considering both magnetostatic interactions and slow dynamics, we have shown how such decoration ring expands over infinite time, even in the absence of any applied field. More unexpected is that application of short large field pulses does not reverse instantaneously the magnetization in the soft layer but gives rise to the simultaneous nucleation and propagation of reversed down-magnetized coupled domains in the soft and hard layers inside an up-up spin state. This emphasizes the notion that the hardness of a given layer in a bilayer soft-hard structure has to be defined from a dynamic point of view. This has some implications for new generations of high speed devices. As devices continue to shrink in size, such local magnetostatic interactions and dynamic effects have to be considered in view of their implementation. Namely, the suppression of 360° domain walls in systems with out-of-plane anisotropy (induced by extrinsic defects, depending on growth or substrate cleaning procedures) might be sufficient to minimize the interlayer magnetostatic interaction. This is especially restrictive for the implementation of double coercivity based systems with in-plane anisotropy. More fast and ultrafast dynamic studies of interacting domain structures have to be carried out in thin layer structures, but also in associated patterned nano-size elements.

ACKNOWLEDGMENTS

The authors wish to thank S. Auffret for assistance with film deposition, and A. Thiaville for enlightening discussions. This paper is a part of S. Wiebel's work done in the frame of a European fellowship supported by the ULTRASWITCH European project (HRPN-CT-2002-00318). This work has been performed in part during the early stage of the MAGLOG-STREP European program (FP-510993).

- ¹A. Moser, K. Takano, D. T. Margulies, M. Albrecht, Y. Sonobe, Y. Ikeda, S. Sun, and E. E. Fullerton, *J. Phys. D* **35**, R157 (2002).
- ²N. Nishimura, T. Hirai, A. Koganei, T. Ikeda, K. Okano, Y. Sekiguchi, and Y. Osada, *J. Appl. Phys.* **91**, 5246 (2002).
- ³V. Baltz, S. Landis, B. Rodmacq, and B. Dieny, *J. Magn. Magn. Mater.* **290**, 1286 (2005).
- ⁴S. Maat, K. Takano, S. S. P. Parkin, and E. E. Fullerton, *Phys. Rev. Lett.* **87**, 087202 (2001).
- ⁵J. Sort, B. Rodmacq, S. Auffret, and B. Dieny, *Appl. Phys. Lett.* **83**, 1800 (2003); J. Sort, V. Baltz, F. Garcia, B. Rodmacq, and B. Dieny, *Phys. Rev. B* **71**, 054411 (2005).
- ⁶O. Hellwig, A. Berger, and E. E. Fullerton, *Phys. Rev. Lett.* **91**, 197203 (2003).
- ⁷M. Bonfim, G. Ghiringhelli, F. Montaigne, S. Pizzini, N. B. Brookes, F. Petroff, J. Vogel, J. Camarero, and A. Fontaine, *Phys. Rev. Lett.* **86**, 3646 (2001).
- ⁸P. Bruno and C. Chappert, *Phys. Rev. Lett.* **67**, 1602 (1991).
- ⁹S. S. P. Parkin, *Phys. Rev. Lett.* **67**, 3598 (1991).
- ¹⁰V. Grolier, D. Renard, B. Bartenlian, P. Beauvillain, C. Chappert, C. Dupas, J. Ferré, M. Galtier, E. Kolb, M. Mulloy, J. P. Renard, and P. Veillet, *Phys. Rev. Lett.* **71**, 3023 (1993).
- ¹¹L. Néel, *C.R. Acad. Sci.* **255**, 1676 (1962).
- ¹²B. Dieny, V. S. Speriosu, S. S. P. Parkin, B. A. Gurney, D. R. Wilhoit, and D. Mauri, *Phys. Rev. B* **43**, 1297 (1991).
- ¹³J. Moritz, F. Garcia, J. C. Toussaint, B. Dieny, and J. P. Nozières, *Europhys. Lett.* **65**, 123 (2004).
- ¹⁴S. Gider, B.-U. Runge, A. C. Marley, and S. S. P. Parkin, *Science* **281**, 797 (1998).
- ¹⁵L. Thomas, M. G. Samant, and S. S. P. Parkin, *Phys. Rev. Lett.* **84**, 1816 (2000).
- ¹⁶W. S. Lew, S. P. Li, L. Lopez-Diaz, D. C. Hatton, and J. A. C. Bland, *Phys. Rev. Lett.* **90**, 217201 (2003).
- ¹⁷S. Lemerle, J. Ferré, C. Chappert, V. Mathet, T. Giamarchi, and P. Le Doussal, *Phys. Rev. Lett.* **80**, 849 (1998).
- ¹⁸J. Ferré, *Spin Dynamics in Confined Structures*, edited by B. Hillebrands and K. Ounadjela (Springer, New York, 2002), pp. 127–165.
- ¹⁹R. Schäfer, R. Urban, D. Ullmann, H. L. Meyerheim, B. Heinrich, L. Schultz, and J. Kirshner, *Phys. Rev. B* **65**, 144405 (2002).
- ²⁰S. Wiebel, J.-P. Jamet, N. Vernier, A. Mougín, J. Ferré, V. Baltz, B. Rodmacq, and B. Dieny, *Appl. Phys. Lett.* **86**, 142502 (2005).
- ²¹S. Landis, B. Rodmacq, and B. Dieny, *Phys. Rev. B* **62**, 12271 (2000).
- ²²V. Repain, M. Bauer, J. P. Jamet, A. Mougín, J. Ferré, C. Chappert, and H. Bernas, *Europhys. Lett.* **68**, 460 (2004).
- ²³S. Lemerle, J. Ferré, A. Thiaville, J. N. Chapman, P. Aitchison, S. McVitie, C. Chappert, and V. Kottler, in *Magnetic Hysteresis in Novel Magnetic Materials*, edited by G. C. Hadjipanayis (Kluwer, Dordrecht, 1997), p. 537.
- ²⁴M. Bauer, A. Mougín, J. P. Jamet, V. Repain, J. Ferré, R. L. Stamps, H. Bernas, and C. Chappert, *Phys. Rev. Lett.* **94**, 207211 (2005).
- ²⁵A. Hubert and R. Schäfer, in *Magnetic Domains* (Springer, New York, 1998), p. 306.