



HAL
open science

Respiratory explants as a model to investigate early events of contagious bovine pleuropneumonia infection

Giovanni Di Teodoro, Giuseppe Marruchella, Andrea Di Provvido, Gianluca Orsini, Gaetano Federico Ronchi, Anna Rita D'angelo, Nicola D'alterio, Flavio Sacchini, Massimo Scacchia

► To cite this version:

Giovanni Di Teodoro, Giuseppe Marruchella, Andrea Di Provvido, Gianluca Orsini, Gaetano Federico Ronchi, et al.. Respiratory explants as a model to investigate early events of contagious bovine pleuropneumonia infection. *Veterinary Research*, 2018, 49 (1), pp.5. 10.1186/s13567-017-0500-z . hal-01683166

HAL Id: hal-01683166

<https://hal.science/hal-01683166>

Submitted on 12 Jan 2018

HAL is a multi-disciplinary open access archive for the deposit and dissemination of scientific research documents, whether they are published or not. The documents may come from teaching and research institutions in France or abroad, or from public or private research centers.

L'archive ouverte pluridisciplinaire **HAL**, est destinée au dépôt et à la diffusion de documents scientifiques de niveau recherche, publiés ou non, émanant des établissements d'enseignement et de recherche français ou étrangers, des laboratoires publics ou privés.

RESEARCH ARTICLE

Open Access



Respiratory explants as a model to investigate early events of contagious bovine pleuropneumonia infection

Giovanni Di Teodoro^{1,2}, Giuseppe Marruchella^{2*} , Andrea Di Provido¹, Gianluca Orsini¹, Gaetano Federico Ronchi¹, Anna Rita D'Angelo¹, Nicola D'Alterio¹, Flavio Sacchini¹ and Massimo Scacchia¹

Abstract

Contagious bovine pleuropneumonia (CBPP) is a severe disease caused by *Mycoplasma mycoides* subsp. *mycoides* (*Mmm*). Knowledge on CBPP pathogenesis is fragmented and hampered by the limited availability of laboratory animal and in vitro models of investigation. The purpose of the present study is to assess respiratory explants as useful tools to study the early stages of CBPP. Explants were obtained from trachea, bronchi and lungs of slaughtered cattle, tested negative for *Mycoplasma* spp. and for the major bacterial and viral respiratory pathogens. The interaction of *Mmm* with explant cells was studied by immunohistochemistry (IHC), double-labelling indirect immunofluorescence (DLIF) and laser scanning confocal microscopy (LSCM). *Mmm* capability to survive and proliferate within the explants was evaluated by standard microbiological procedures. Finally, the putative cellular internalization of *Mmm* was further investigated by the gentamicin invasion assay. IHC and DLIF indicated that *Mmm* can colonize explants, showing a marked tropism for lower airways. Specifically, *Mmm* was detected on/inside the bronchiolar and alveolar epithelial cells, the alveolar macrophages and the endothelial cells. The interaction between *Mmm* and explant cells was abolished by the pre-incubation of the pathogen with bovine anti-*Mmm* immune sera. *Mmm* was able to survive and proliferate in all tracheal, bronchial and lung explants, during the entire time course of the experiments. LSCM and gentamicin invasion assay both confirmed that *Mmm* can enter non-phagocytic host cells. Taken together, our data supports bovine respiratory explants as a promising tool to investigate CBPP, alternative to cattle experimental infection.

Introduction

Contagious bovine pleuropneumonia (CBPP) is a severe disease caused by *Mycoplasma mycoides* subsp. *mycoides* (*Mmm*) and represents a serious transboundary threat for livestock [1, 2]. CBPP is currently widespread in sub-Saharan Africa, where it is considered of major economic relevance through decreased animal productivity and the high cost of the control measures [3, 4].

Although *Mmm* can be detected in different body fluids and tissue types, the infection spreads through inhalation of droplets from diseased coughing animals [5].

CBPP clinical signs and pathological features are deeply influenced by several factors (e.g. host breed and age, strain virulence, stage of the disease) and mainly consist of respiratory distress and fibrinous pleuropneumonia, respectively [5, 6].

The pathogenesis of CBPP is considered multifactorial but remains largely unknown [7–9]. The capsular polysaccharide seems to promote *Mmm* adhesion to the host cells, enhancing the resistance to phagocytosis and playing a cytopathic effect on blood vessels [6, 10, 11]. The production of reactive oxygen species (ROS), the respiratory burst in phagocytic cells and immune-mediated mechanisms are supposed to further contribute to *Mmm* pathogenicity [12–15].

In the absence of suitable laboratory animal models, the study of CBPP mainly relies on the experimental

*Correspondence: gmarruchella@unite.it

² Faculty of Veterinary Medicine, University of Teramo, Loc. Piano d'Accio, 64100 Teramo, Italy

Full list of author information is available at the end of the article

infection of cattle. This approach is very expensive, ethically debatable, and of little value for investigating the early stages of the disease [16, 17]. Cell cultures have been used to study the host–pathogen interaction [9, 13, 18–20]; however, they do not accurately mimic the microarchitecture of the bovine airways and still foster the development of alternative, eligible in vitro models of investigation.

Taking this into consideration, the present study aims to evaluate whether bovine respiratory explants (BREs) are able to support the colonization, survival and replication of *Mmm*, thus acting as a suitable model to understand the early stages of *Mmm* infection and CBPP pathogenesis.

Materials and methods

Selection of animals

Samples were collected from 18 to 24 months old, Marchigiana breed cattle, belonging to herds located in the Abruzzi region (Central Italy) and officially free from CBPP, tuberculosis, brucellosis and bovine enzootic leukosis. Cattle were clinically healthy and regularly slaughtered, with no relevant lung lesions detected at post-mortem inspection.

Samples of trachea, bronchi, lung and tracheobronchial lymph nodes were collected from each animal and tested for *Mycoplasma* spp. [21], bovine viral diarrhoea virus (BVDV) [22], bovine herpesvirus type-1 (BHV-1; VetMAX IBR gB, LSI), bovine respiratory syncytial virus (BRSV) and parainfluenza-3 virus (PI-3V; VetMAX Triplex BRSV & PI3, LSI) by polymerase chain reaction (PCR).

Culture of bovine respiratory explants

At the slaughterhouse, the cranial portion of trachea, the accessory bronchus and the cranial lobe of the right lung were aseptically collected within 20 min from the stunning and bleeding of cattle. Samples were promptly immersed in transport medium (TM, Additional file 1), stored at 4 °C and delivered to the laboratory. BREs were obtained within 2 h from tissue collection, following a previously published protocol [23] with minor modifications.

Explants of the tracheal mucosa

The tracheal mucosa was stripped from the cartilage rings, cut in squares of about 25 mm² and washed with fresh TM. Tissue samples were then transferred into 6-well plates, their bottom being covered with 2 mL of 1% agar gel (Biolife, Italy). The tracheal explants were cultured in an air–liquid interface system, slightly immersed in tissue culture medium (TCM, Additional file 1), with their epithelium facing up. The TCM was changed on a

daily basis and the explants were incubated at 37 °C with 5% CO₂ for up to 120 h.

Bronchial explants

The accessory bronchus was dissected from the lung parenchyma by means of a sterile scalpel and cut into pieces of about 25 mm², without removing the cartilage. The bronchial samples were washed with fresh TM and cultured as reported above, using a specific TCM (Additional file 1).

Explants of lung parenchyma

The accessory bronchus was catheterized and the lung parenchyma embedded with 1% low gelling temperature agarose (type VII-A agarose, Sigma-Aldrich) at 37 °C. The lung lobe was then cooled to 4 °C for 20 min and cut into 1 mm thick slices. Tissue samples of about 25 mm² were transferred into 6-well plates and maintained as for the other BREs, using a specific TCM (Additional file 1).

All BREs were tested daily for the presence of contaminant bacteria and fungi. To this aim, 100 µL of TCM per well were plated on 2% sheep blood agar and *Sabouraud* agar; culture plates were incubated at 37 °C and evaluated for growth after 72 and 96 h.

Morphologic assessment of bovine respiratory explants

To assess their microscopic features, BREs were fixed in 10% neutral buffered formalin (NBF) at 0, 24, 48, 72, 96 and 120 h post-culture (hpc), embedded in paraffin and routinely processed for histology (hematoxylin and eosin stain, H&E). The distribution pattern of selected cellular markers was evaluated by immunohistochemistry (IHC), as detailed in Additional file 2. The microscopic morphology of BREs, as well as the IHC distribution pattern of the cell markers, were qualitatively evaluated by two independent investigators, blind to the experimental conditions. Control tissues (i.e. samples taken from the same animals at slaughtering and immediately fixed in 10% NBF) were used for comparison.

In addition, morphometric parameters (thickness of the tracheal and bronchial epithelium, extent of the alveolar walls) were measured in 10 high-power fields (final magnification = 400×) per time point per explant. Image analysis was carried out using *ImageJ* software (National Institutes of Health, Bethesda, USA) and data submitted for statistical analysis.

Mycoplasma mycoides subsp. *mycoides*: strain, growth condition and titration

In the present study, we used a field strain of *Mmm*, which was isolated from a CBPP-affected cow in the Namibian region of Caprivi [24] and cultured in modified PPLO broth [25] at 37 °C with 5% CO₂.

Mmm was titrated by serial tenfold dilutions, such assays being performed in duplicate. In detail, 100 μ L of each dilution were plated on modified PPLO agar [25] and incubated at 37 °C with 5% CO₂ for 72 h. The *Mmm* titre was expressed as colony-forming units (CFU)/mL.

Challenge of bovine respiratory explants with *Mycoplasma mycoides* subsp. *mycoides*

BREs were challenged by immersion in 2 mL of TCM, which contained 2–6 \times 10⁸ CFU/mL of *Mmm*. After 1 h of incubation, BREs were washed with PBS to remove non-attached *Mmm*, and cultivated in 6-wells plates up to 120 h post-inoculation (hpi). The TCM was changed on a daily basis. All infection assays were carried out in triplicate in three independent experiments and BREs were fixed in 10% NBF at 1, 24, 48, 72, 96 and 120 hpi. As above detailed, morphometric parameters (thickness of the tracheal and bronchial epithelium, extent of the alveolar walls) were measured in challenged BREs, using negative controls (i.e. non-infected BREs) for comparison.

An additional set of experiments were carried out to evaluate whether the interaction between *Mmm* and BREs might be inhibited by specific antibodies. To this aim, *Mmm* (2 mL of TCM containing 2–6 \times 10⁸ CFU/mL) was preliminary incubated with bovine CBPP negative or positive serum (1 mL of OIE International Standard Serum for CBPP, complement fixation titer = 1/320) and then inoculated on lung explants, which were finally fixed in 10% NBF 1 hpi.

All 10% NBF-fixed samples were embedded in paraffin and routinely processed for H&E stain, IHC, double-labelling indirect immunofluorescence (DLIIF) and laser scanning confocal microscopy (LSCM) investigations.

Immune detection of *Mycoplasma mycoides* subsp. *mycoides* in bovine respiratory explants

IHC was carried out following a recently published protocol [26]. Four μ m-thick sections were mounted on positive charged glass slides, dried overnight at 37 °C, dewaxed and rehydrated using standard procedures. Antigen retrieval was performed by incubation with trypsin (Sigma-Aldrich; working solution = 0.01% in 0.15 M Tris–HCl buffer, pH 7.8) at 37 °C for 10 min. A murine monoclonal antibody anti-*Mmm* was used as primary antibody. Immune reactions were detected by means of a biotin-streptavidin amplification method and visualized using 3-3'-diaminobenzidine as chromogen (Dako REAL™ detection system). Lung samples from CBPP-naturally affected cattle which showed lesions at different stages of evolution (red-to-grey hepatization, necrosis, sequestra) acted as positive control. Negative controls consisted of CBPP negative lung samples and were also included in each IHC run.

DLIIF and LSCM investigations were carried out to better detail the cellular tropism of *Mmm*, both in challenged BREs and in samples collected from CBPP-affected cattle. To this purpose, tissue sections were incubated with primary antibodies anti-*Mmm*, lysozyme, von Willebrand factor (vWF) and cytokeratins (see Additional file 3 for details). Sections were mounted using an antifade medium with DAPI (Vector Laboratories, Inc.), stored at 4 °C in the dark until imaged using a Leica TCS SP5 II confocal microscope.

Survival and growth of *Mycoplasma mycoides* subsp. *mycoides* in bovine respiratory explants

The *Mmm* ability to survive and grow within BREs was investigated in triplicate in 3 independent experiments. At different time-points (1, 24, 48, 72, 96 and 120 hpi), BREs were thoroughly rinsed in PBS and disrupted through high-speed shaking (30 Hz for 7 min) with stainless steel beads (Tissue Lyser II, Qiagen). The tissue homogenate (100 μ L) was seeded in modified PPLO culture media and *Mmm* was titrated as above detailed. Culture media were considered negative in the absence of *Mmm* growth after 96 h of incubation.

The *Mmm* ability to survive and grow in TCM was also assessed, both in presence or in absence of BRE. To this aim, TCM (100 μ L) was collected from each explant-containing well, plated on modified PPLO agar and evaluated for growth up to 96 h. In addition, *Mmm* (100 μ L of PBS with 2–6 \times 10⁸ CFU/mL) was seeded in 5 mL of each TCM (without explant), incubated up to 120 h, evaluated for growth and titrated as above described.

Gentamicin invasion assay on lung parenchyma explants

The putative cellular internalization of *Mmm* was investigated in lung explants following gentamicin invasion assay protocols [27, 28], modified to fit our experimental conditions. Assays were performed in triplicate in two independent experiments.

Lung explants were inoculated with *Mmm* as above reported. Then, 24 hpi, explants were added with gentamicin (Sigma-Aldrich, 400 μ g/mL of TCM) for 3 h, aiming to kill the extracellular *Mmm*. Thereafter, lung explants were washed with PBS, transferred in other 6-well plates to avoid the persistence of gentamicin in the agar gel, and cultured up to 120 hpi. The presence and the titer of *Mmm* were evaluated as above detailed, both in lung and TCM at 1, 24 (immediately before the gentamicin treatment), 27 (immediately after the gentamicin treatment), 48, 72, 96 and 120 hpi.

Statistical analysis

Data were analyzed using a multivariate General Linear Model for repeated measures and are presented as

mean \pm standard deviations (SD). The differences were considered to be significant with $p < 0.05$. Statistical analysis was performed using the SPSS 15.0 software package (SPSS Inc. Chicago, IL, USA).

Results

Microbiological, histological and morphometric assessment of bovine respiratory explants

All cattle included in the present study tested negative for *Mycoplasma* spp., BVDV, BHV-1, PI-3 and BRSV.

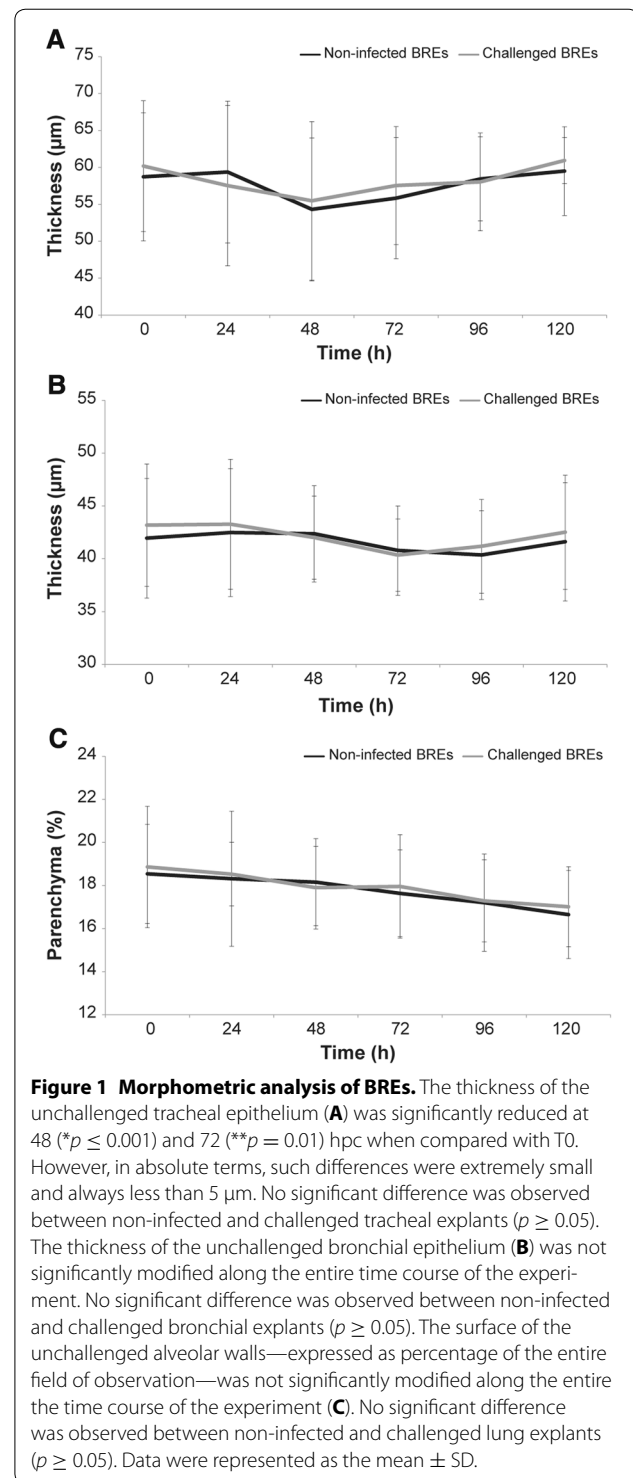
The microscopical morphology of unchallenged BREs was considered satisfactory by both investigators (Additional file 4); the only relevant changes affected the mucosa-associated lymphoid tissue (MALT), which already at T24 showed massive apoptosis of lymphoid cells (Additional file 5).

The distribution pattern, intensity and specificity of cellular markers immunoreactivity (IR) appeared always well-preserved and resembled those observed in control tissues (Additional file 6). Morphometric parameters were overall stable during the entire time course of the experiments; the thickness of tracheal epithelium underwent very small reduction, while no significant change affected the thickness of bronchial epithelium and the extent of the lung parenchyma. The challenge with *Mmm* neither caused obvious pathological changes of BREs nor significantly modified any morphometric parameters (Figure 1).

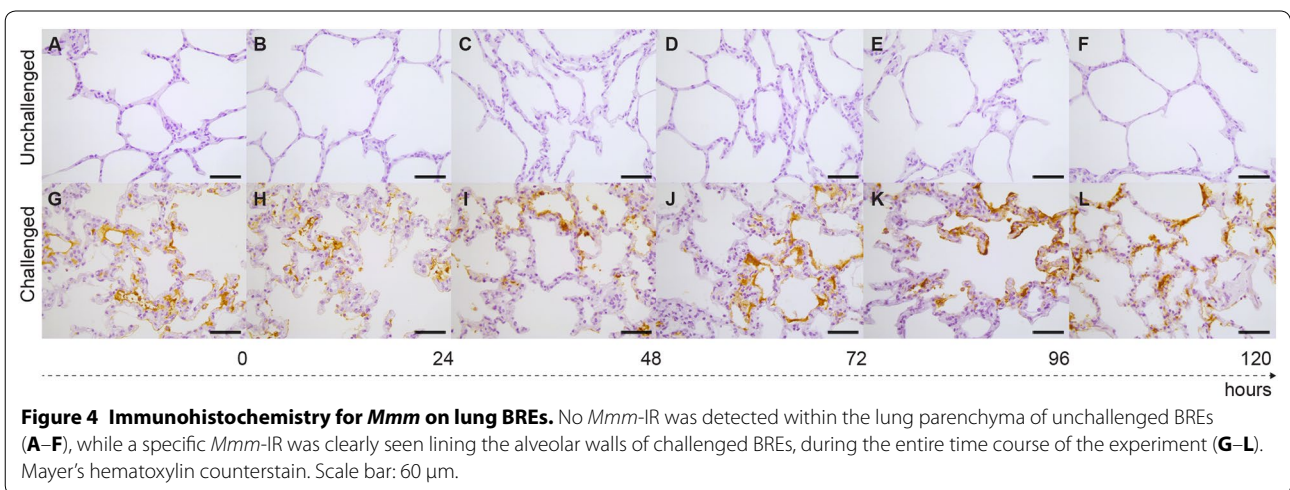
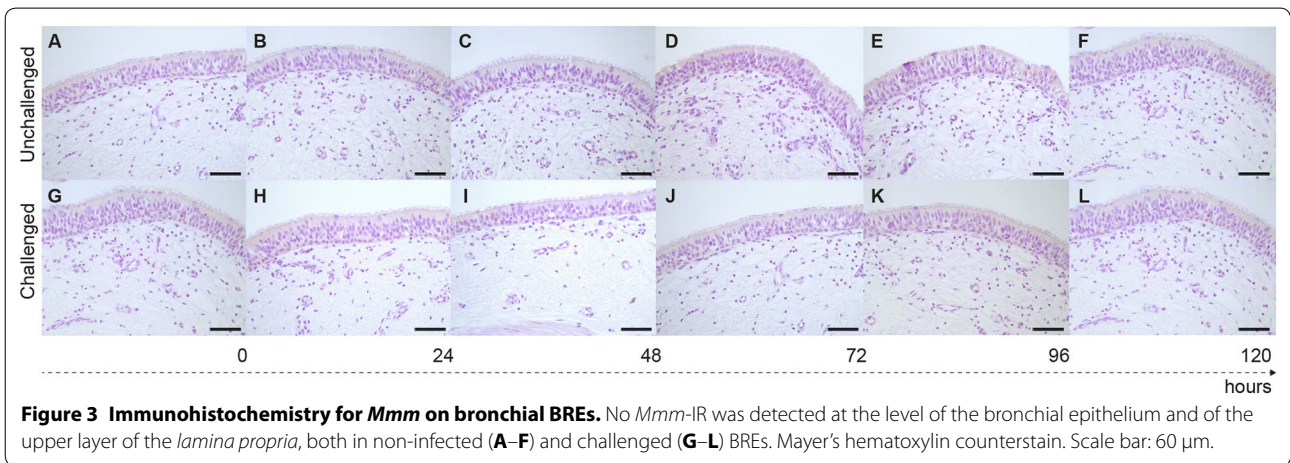
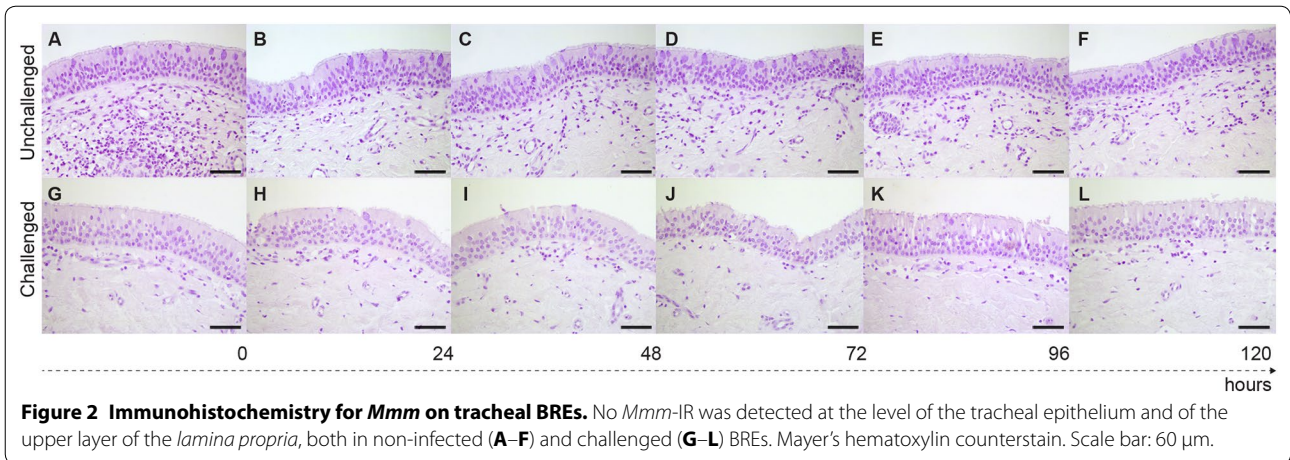
Immune detection of *Mycoplasma mycoides* subsp. *mycoides* in challenged bovine respiratory explants

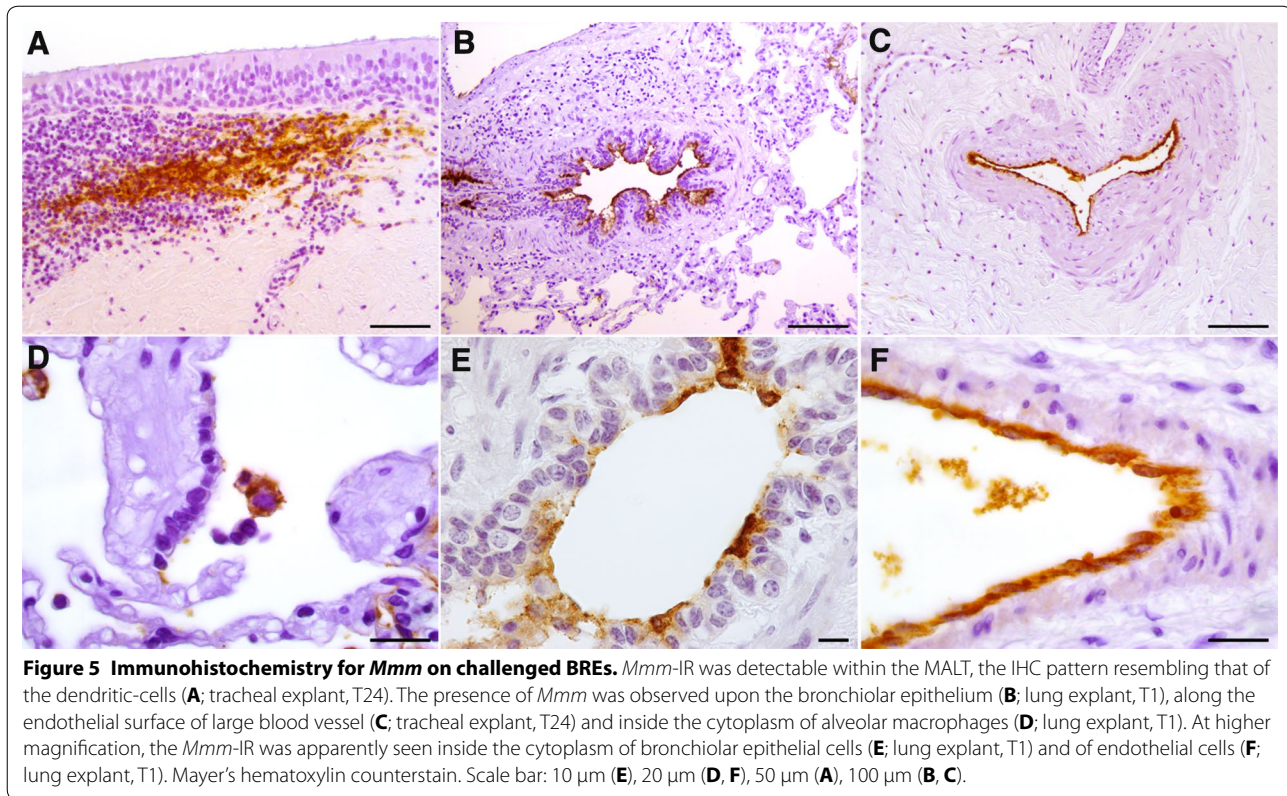
Mmm-IR largely varied among the different tracts of bovine airways. No specific IR was observed at the level of the tracheal and bronchial epithelium (Figures 2 and 3), except for small foci of disepithelialization, most likely due to tissue handling. In contrast, *Mmm* was consistently detected along and/or inside the bronchiolar epithelium and the alveolar cells, remaining apparently unchanged up to 120 hpi (Figures 4 and 5). Furthermore, *Mmm* was seen within the MALT showing a dendritic-like pattern, within the cytoplasm of the alveolar macrophages, as well as upon/within the endothelial cells from all BREs (Figure 5). In general, the *Mmm*-IR in lung explants closely resembled that observed in CBPP-affected cattle, which were used as positive controls (Figure 6). The interaction between *Mmm* and lung explants was dramatically reduced, if not completely abolished, by pre-incubation of the pathogen with anti-*Mmm* bovine immune sera (Figure 7).

DLIF and LSCM investigations confirmed the *Mmm* localization within the above-mentioned tissues. In particular, LSCM demonstrated the presence of small amounts of *Mmm* within the cytoplasm of alveolar



macrophages, of epithelial cells lining the bronchiolar and alveolar lumina, as well as of blood and lymphatic endothelial cells, both in challenged BREs (Figure 8) and in CBPP-naturally affected cattle (Figure 9).





Survival and growth of *Mycoplasma mycoides* subsp. *mycoides* in bovine respiratory explants

Culture investigations demonstrated the survival of *Mmm* in all BREs, along the entire time course of the experiments. As shown in Figure 10, the titre of *Mmm* varied over time and reached the highest levels in the lung explants.

In tracheal explants, the *Mmm* titer significantly increased between T24 and T120, when compared with T0 ($p \leq 0.006$); no significant difference was observed between T24 and T48 ($p = 0.9$), while a slight but significant reduction occurred between T96 and T120 ($p = 0.04$).

In bronchial explants, the *Mmm* titer significantly increased between T24 and T120, when compared with T0 ($p \leq 0.006$); no significant difference was observed between T24 and T48 ($p = 0.3$), as well as between T72 and T120 ($p \geq 0.2$).

In lung explants, the *Mmm* titer did not significantly change between T0 and T24 ($p = 0.3$); then, *Mmm* titer significantly increased between T48 and T96 ($p \leq 0.04$), while no significant difference was observed between T96 and T120 ($p = 0.3$). At each time point, *Mmm* titer significantly varied between BREs ($p < 0.05$), except for lung vs bronchial explants at T24 ($p = 0.9$), T48 (0.5) and T72 ($p = 0.2$).

TCM collected from explant-containing wells proved to be negative after 72 hpi. Likewise, the *Mmm* titre in TCM

alone (i.e. without explant) dramatically decreased and was no longer detectable after 72 h (Additional file 7).

Gentamicin invasion assay on lung explants

The gentamicin treatment sharply reduced the titre of *Mmm*, although it did not completely abolish its presence in lung explants. In TCM, *Mmm* was no longer detectable after the addition of gentamicin (Figure 11).

Discussion

The pathogenesis of CBPP still shows a number of “dark sides”, mostly due to the lack of suitable study models. In fact, only few solid data are currently available about the early stages of infection, the selective involvement of specific cell types, as well as the molecular basis of cell and tissue damage [5, 6, 8, 17]. Considering the optimal preservation of cells and tissues, BREs may provide a relevant contribution to fill such gaps of knowledge and to minimize the use of experimental animals.

Explants have been successfully assessed to study the pathogenesis of viral respiratory diseases [23, 29–31] and, less frequently, of respiratory mycoplasmosis in both humans and animals [32–35]. Taken together, data reported herein confirm that explants can be easily obtained from slaughtered cattle [29] and indicate that BREs—particularly lung explants—provide the adequate microenvironment

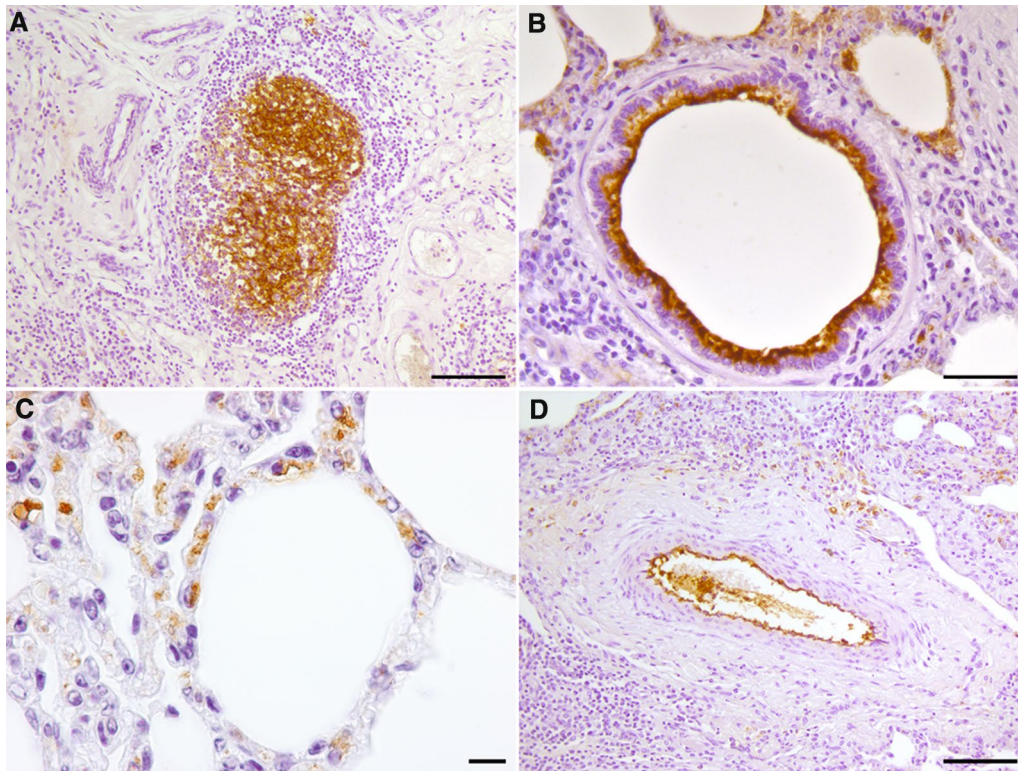


Figure 6 Immunohistochemistry for *Mmm* in CBPP naturally affected cattle. A specific, dendritic-like IR was observed in newly-formed lymphoid follicles, located within the wall of a sequestrum (A). The *Mmm*-IR was also detected along/inside the bronchiolar (B) and alveolar (C) epithelial cells, as well as along the endothelial surface of a blood vessel (D). Mayer's hematoxylin counterstain. Scale bar: 10 μ m (C), 20 μ m (B), 50 μ m (A, D).

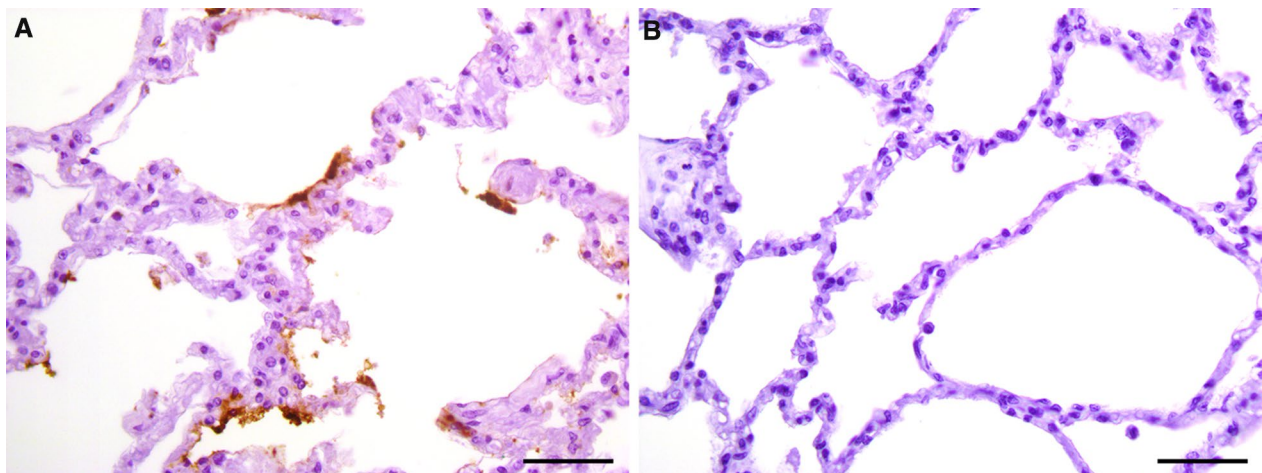


Figure 7 Immunohistochemistry for *Mmm* after pre-incubation with bovine sera. The pre-incubation of the pathogen with CBPP-negative serum did not modify the IHC pattern of *Mmm*, whose antigens were easily detected upon the alveolar surface (A). In contrast, *Mmm* antigens were undetectable in lung explant after the pre-incubation with a CBPP-positive serum (B). Mayer's hematoxylin counterstain. Scale bar: 50 μ m.

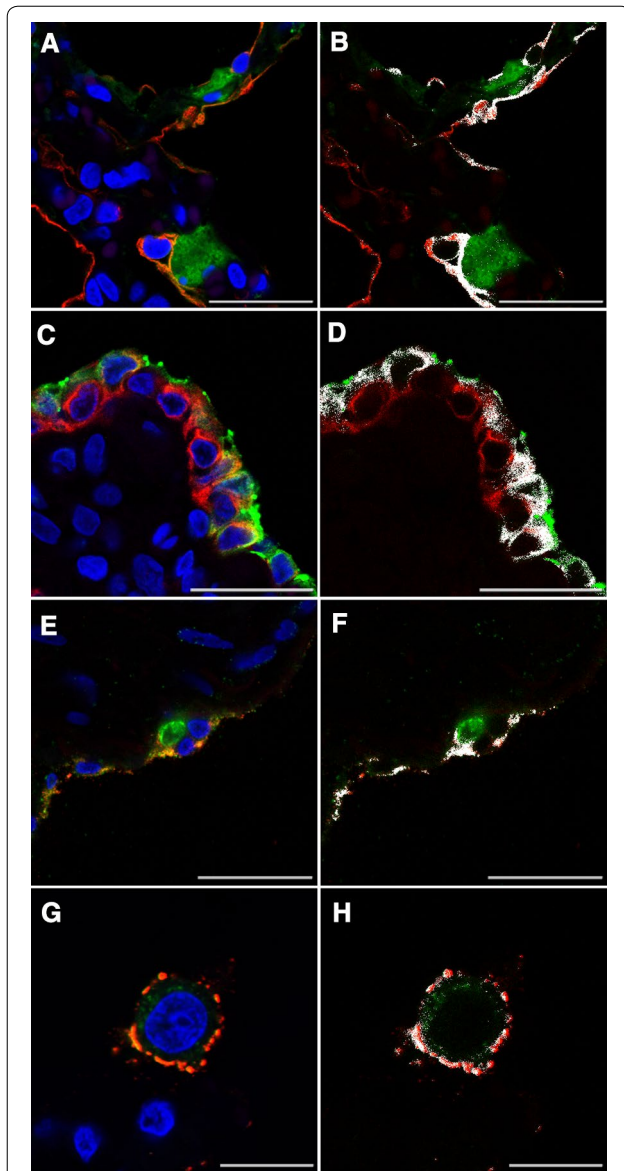


Figure 8 Lung explants challenged with *Mmm*—laser scanning confocal microscopy. **A** The merging of fluorochromes highlighted the close interaction between *Mmm* (green color) and pneumocytes (cytokeratin, red color). Colocalization of red and green signals was shown in white (**B**) and indicated the *Mmm* localization inside the cytoplasm of alveolar cells. **C** The merging of fluorochromes highlighted the close interaction between *Mmm* (green color) and the bronchiolar epithelium (cytokeratin, red color). Colocalization of red and green signals was shown in white (**D**) and indicated the *Mmm* localization inside the cytoplasm of bronchiolar cells. **E** The merging of fluorochromes highlighted the close interaction between *Mmm* (red color) and the endothelium (vWF, green color). Colocalization of red and green signals was shown in white (**F**) and indicated the *Mmm* localization inside the cytoplasm of endothelial cells. **G** The merging of fluorochromes highlighted the close interaction between *Mmm* (red color) and the alveolar macrophage (lysozyme, green color). Colocalization of red and green signals was shown in white (**H**) and indicated the localization of *Mmm* within cytoplasm of the alveolar macrophage. Nuclei were always stained in blue with DAPI. All pictures were kept at T24. Scale bar: 10 μm (**G, H**), 22.5 μm (**A–F**).

for *Mmm* survival and growth, closely resembling the in vivo habitat of this pathogen. As previously stated, severe changes of MALT were observed in BREs early on during the experiments, most likely due to the culture condition (i.e. the composition of the culture media). In fact, TCM for BREs lack fetal calf serum and other components, which are usually added to culture lymphoid tissues [36]. Moreover, TCM for lung explants contain glucocorticoids, which are known to induce the apoptosis of lymphocytes and probably worsened the changes of the MALT [37].

Adhesion is crucial for pathogenic mycoplasma to initiate infection [38]. However, no adhesins or host cell receptors have been identified so far for *Mmm* [8, 9]. Our results indicate that adhesion occurs in BREs. Differently from most respiratory mycoplasmas [34, 39–42], *Mmm* did not adhere to the ciliated epithelial cells lining the trachea and bronchi, whereas it quickly and considerably showed a specific tropism for the lower airways. Since CBPP spreads by the respiratory route, non-ciliated epithelial cells residing within bronchioles and alveoli should be regarded as the earliest and most relevant cellular targets of infection. As widely shown for other respiratory pathogens (namely, influenza viruses), the different expression of cellular surface molecules—which might vary with age and/or along the airways—could strongly influence the tropism of *Mmm* and should be investigated in depth [19, 43].

Mmm antigens were consistently detected inside the cytoplasm of phagocytic cells, as well as on and inside the endothelial cells of blood and lymphatic vessels. Overall, the IHC distribution pattern of *Mmm* in BREs largely overlapped that observed in CBPP naturally affected cattle [44–47], further supporting the suitability of BREs as an attractive and cost-effective model to study the early host–pathogen interaction.

Mycoplasmas have been generally considered extracellular parasites. However, the development of in vitro culture systems and the progress in imaging technologies led to reconsider such “dogma”. In fact, an increasing number of mycoplasmas have been shown to enter non-phagocytic host cells [28, 48–51]. The intracellular phase provides a protective niche for pathogens, in order to escape the immune defense and antimicrobial drugs [52]. Worthy of interest, we herein first demonstrated that *Mmm* is also able to penetrate inside non-phagocytic host cells. This *Mmm* feature could be of great relevance to the onset of chronic infections, which are crucial for the persistence of CBPP in cattle populations. The intracellular localization of *Mmm* was shown by two different, complementary approaches: LSCM and gentamicin invasion assay. The latter has been repeatedly used to verify the invasion and persistence of mycoplasmas inside eukaryotic cells [28, 53, 54] and was herein for the first time applied to explants, further strengthening our observation.

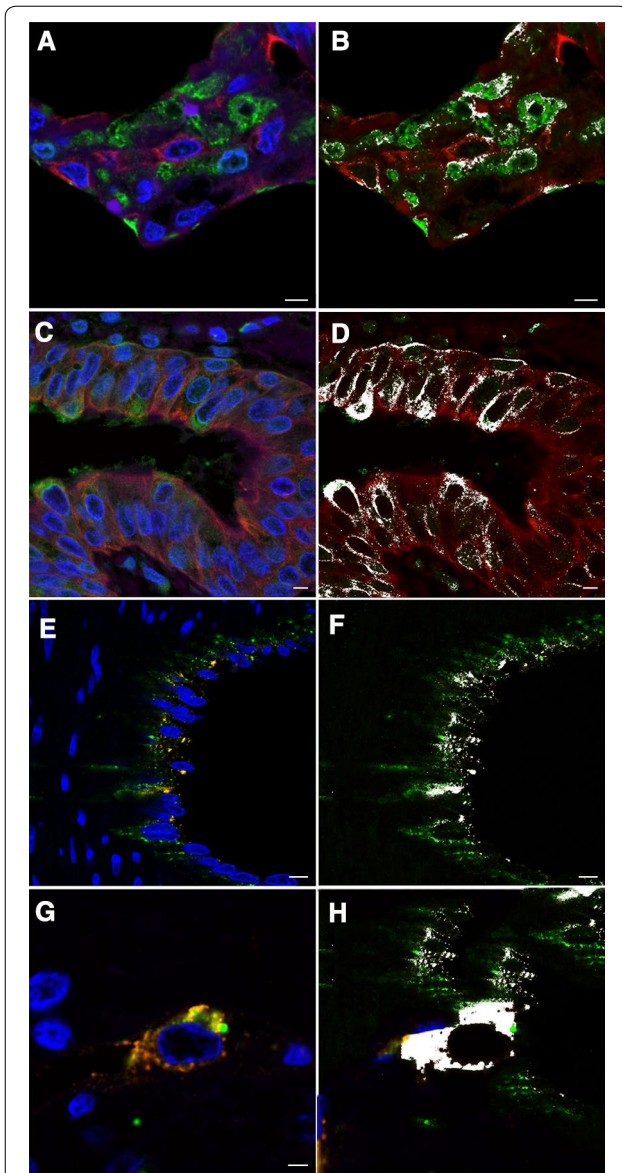


Figure 9 Lung samples from CBPP naturally affected cattle—laser scanning confocal microscopy. **A** The merging of fluorochromes highlighted the close interaction between *Mmm* (green color) and pneumocytes (cytokeratin, red color). Colocalization of red and green signals was shown in white (**B**) and indicated the *Mmm* localization inside the cytoplasm of alveolar cells. **C** The merging of fluorochromes highlighted the close interaction between *Mmm* (green color) and the bronchiolar epithelium (cytokeratin, red color). Colocalization of red and green signals was shown in white (**D**) and indicated the *Mmm* localization inside the cytoplasm of bronchiolar cells. **E** The merging of fluorochromes highlighted the close interaction between *Mmm* (red color) and the endothelium (vWF, green color). Colocalization of red and green signals was shown in white (**F**) and indicated the *Mmm* localization inside the cytoplasm of endothelial cells. **G** The merging of fluorochromes highlighted the close interaction between *Mmm* (red color) and the alveolar macrophage (lysozyme, green color). Colocalization of red and green signals was shown in white (**H**) and indicated the localization of *Mmm* within cytoplasm of the alveolar macrophage. Nuclei were always stained in blue with DAPI. Scale bar: 2.5 μ m (**G, H**), 5 μ m (**A-D**), 7.5 μ m (**E, F**).

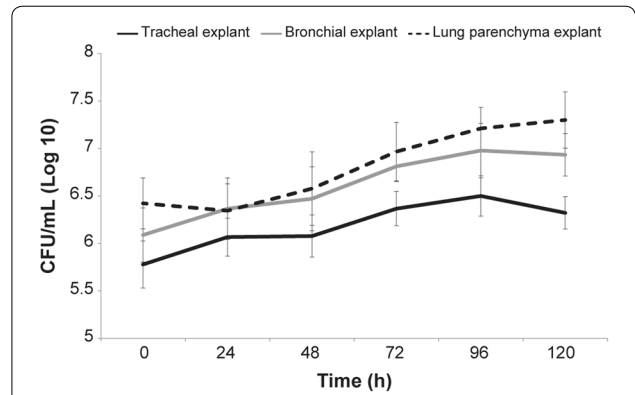


Figure 10 Survival and growth of *Mmm* in challenged BREs. Culture assays yielded the isolation of *Mmm* from all BREs, during the entire time course of the experiments. The *Mmm* titer slightly but significantly increased over time, reaching the highest levels in the lung explants. Data were represented as the mean \pm SD.

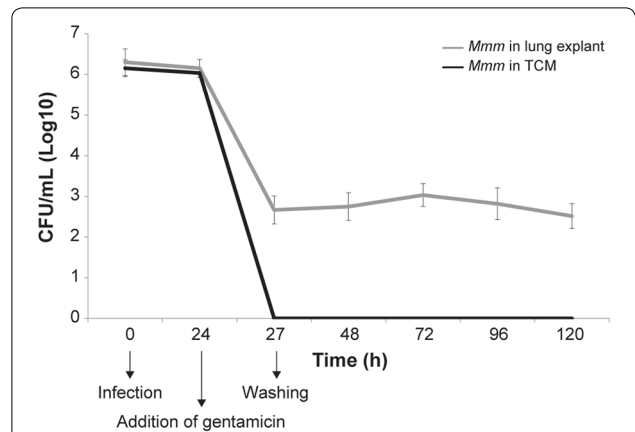


Figure 11 Gentamicin invasion assays. In lung explants, the *Mmm* titer significantly decreased at T27, after the treatment with gentamicin ($p \leq 0.0001$). Then, the titer remained quite stable, with slight modifications at T72 ($p = 0.02$) and at T120 ($p = 0.01$). In TCM, culture tests proved to be negative from T27, after the treatment with gentamicin.

Some data suggest that pathogenicity of *Mmm* may result from toxic compounds (i.e. ROS), generated via glycerol metabolism and directly translocated inside the host cells [13, 18]. However, challenged BREs showed no evident pathological change, despite the abundant presence of *Mmm* in close contact with its target cells. These findings support the hypothesis that cell damage is not directly caused by mycoplasmas through the production of toxic metabolites, but is mediated by the immune and/or inflammatory response [48]. In this respect, we highlight that immune-mediated mechanisms (i.e. autoimmune reactions and type III hypersensitivity) might play a key role in the pathogenesis of vasculitis, which is a prominent and pathognomonic feature of natural and experimental CBPP [6, 14, 55].

In conclusion, the present study indicates that BREs well replicate the host tissue microarchitecture and provide a suitable substrate for *Mmm* survival and growth. We consider that respiratory explants from slaughtered cattle could act as useful tools to investigate the early host-*Mmm* interactions also fulfilling the principles of the three Rs stated by Russell and Burch [56]. In the near future, we consider that BREs could be successfully used to clarify some crucial and yet unknown steps of *Mmm* infection (e.g. to characterize the adhesins and their corresponding receptors on different cell types, to understand the mechanisms of *Mmm* entry inside the host cell, to investigate the early events of the inflammatory response, to provide new insights about the evolution of the antimicrobial resistance etc.). In this respect, we consider that similar models of study, developed in different animal species to investigate other respiratory pathogens [43], should be carefully regarded to open additional fields of investigation.

Additional files

Additional file 1. Composition of transport and culture media used for bovine respiratory explants.

Additional file 2. Technical details of the immunohistochemical protocols performed for selected cellular markers.

Additional file 3. Double-labelling indirect immunofluorescence (DLIIF) protocols.

Additional file 4. Representative photomicrographs of BREs. The morphologic appearance of the tracheal (A–F) and bronchial (G–N) epithelium was well maintained for up to 120 hpc. Notably, the density of the cilia was preserved along the entire time course of the experiment. Likewise, the appearance of the underlying *lamina propria*—including the blood vessels—did not show any obvious change. The thickness and the dyeability of the alveolar walls slightly changed after the embedding with agarose gel (O vs P) and then remained almost unaltered up to 120 hpc. H&E staining. Scale bar: 50 μ m (A–N), 100 μ m (O–T).

Additional file 5. Changes affecting the MALT in tracheal BREs. At T0, no change affected the lymphoid tissue residing within the tracheal mucosa; the lymphoid cells were densely packed and showed a normal microscopic appearance (A). At T24, the tracheal MALT was depleted, with marked pyknosis and fragmentation of lymphoid cells (B). Such changes were more severe at T120 (C). Already at T24, the TUNEL assay (Tunel Apoptosis detection kit, Merck Millipore) demonstrated the presence of a very high number of apoptotic cells within the tracheal MALT (D). Moreover, few apoptotic cells were also seen within the tracheal epithelium and the upper layer of the *lamina propria*. Scale bar: 20 μ m (A–C), 50 μ m (D).

Additional file 6. Immunohistochemistry for cellular markers in BREs. A strong and specific IR for cytokeratins was evident within the cells of the tracheal epithelium and glands from a control tissue immediately fixed at the abattoir (A), as well as in an explant 120 hpc (B). Similarly, a strong and specific IR for vWF was seen within the endothelial cells of the trachea in a control tissue immediately fixed at the abattoir (C) and in an explant 120 hpc (D). Lysozyme-IR macrophages were detected within the tracheal *lamina propria* in a control tissue immediately fixed at the abattoir (E) and in an explant 120 hpc (F). Mayer's hematoxylin counterstain. Scale bar: 100 μ m (A–B), 50 μ m (C–F).

Additional file 7. Survival and growth of *Mmm* in TCM. The graphic clearly shows that *Mmm* was not able to grow in TCM, its presence being no longer detected 72 h post-seeding. No significant difference was observed among different TCM ($p \geq 0.05$).

Abbreviations

CBPP: contagious bovine pleuropneumonia; *Mmm*: *Mycoplasma mycoides* subsp. *mycoides*; ROS: reactive oxygen species; BREs: bovine respiratory explants; BVDV: bovine viral diarrhoea virus; BHV-1: bovine herpesvirus type 1; PI-3: parainfluenza-3 virus; BRSV: bovine respiratory syncytial virus; PCR: polymerase chain reaction; TM: transport medium; TCM: tissue culture medium; NBF: neutral buffered formalin; H&E: hematoxylin and eosin stain; IHC: immunohistochemistry; CFU: colony forming units; PBS: phosphate-buffered saline; DLIIF: double-labelling indirect immunofluorescence; LSCM: laser scanning confocal microscopy; vWF: von Willebrand factor; SD: standard deviation; MALT: mucosa-associated lymphoid tissue; IR: immunoreactivity.

Competing interests

The authors declare that they have no competing interests.

Authors' contributions

GDT and GM developed the study design. MS and NDA coordinated the study design and the related activities. GDT, ADP, GO and GFR carried out the laboratory investigations of all the experiments. GDT, GM, ARD and FS were involved in statistical analysis, data interpretation and writing of the final version of the manuscript. All authors read and approved the final manuscript.

Acknowledgements

We gratefully thank Mrs. Rosie Trachtman for kindly revising the English text manuscript. We also gratefully thank Prof. Giorgio Vignola and Dr Paola Di Giuseppe for their outstanding support in statistical analysis and formatting figures, respectively.

Ethics approval and consent to participate

Not applicable.

Author details

¹ OIE Reference Laboratory for Contagious Bovine Pleuropneumonia, Istituto Zooprofilattico Sperimentale dell'Abruzzo e Molise "G. Caporale", Campo Boario, 64100 Teramo, Italy. ² Faculty of Veterinary Medicine, University of Teramo, Loc. Piano d'Accio, 64100 Teramo, Italy.

Publisher's Note

Springer Nature remains neutral with regard to jurisdictional claims in published maps and institutional affiliations.

Received: 19 September 2017 Accepted: 1 December 2017

Published online: 12 January 2018

References

- Anonymous (2014) Contagious bovine pleuropneumonia (infection with *Mycoplasma mycoides* subsp. *mycoides* SC). In: Manual of diagnostic tests and vaccines for terrestrial animals, Chapter 2.4.8. OIE, Paris
- Anonymous (2017) OIE-Listed diseases, infections and infestations in force in 2017. <http://www.oie.int/animal-health-in-the-world/oie-listed-diseases-2017/>. Accessed 3 Aug 2017
- Tambi NE, Maina WO, Ndi C (2006) An estimation of the economic impact of contagious bovine pleuropneumonia in Africa. *Rev Sci Tech* 25:999–1011
- Onono JO, Wieland B, Rushton J (2014) Estimation of impact of contagious bovine pleuropneumonia on pastoralists in Kenya. *Prev Vet Med* 115:122–129
- Thiacourt F, Van Der Lugt JJ, Provost A (2004) Contagious bovine pleuropneumonia. In: Coetzer JAW, Tustin RC (eds) Infectious diseases of live-stock. Oxford University Press Southern Africa, Cape Town, pp 2045–2059
- Nicholas R, Ayling R, McAuliffe L (2007) Contagious bovine pleuropneumonia. In: Nicholas R, Ayling R, McAuliffe L (eds) *Mycoplasma* diseases of ruminants. CABI, Wallingford, pp 69–97
- Westberg J, Persson A, Holmberg A, Goesmann A, Lundberg J, Johansson KE, Pettersson B, Uhlén M (2004) The genome sequence of *Mycoplasma mycoides* subsp. *mycoides* SC type strain PG1T, the causative agent of contagious bovine pleuropneumonia (CBPP). *Genome Res* 14:221–227

8. Pilo P, Frey J, Vilei EM (2007) Molecular mechanisms of pathogenicity of *Mycoplasma mycoides* subsp. *mycoides* SC. *Vet J* 174:513–521
9. Zhou Y, Wang Y, Li Y, Nick N, Zou X, Bai F, Wu J, Xin J (2016) P19 contributes to *Mycoplasma mycoides* subsp. *mycoides* adhesion to EBL cells. *Microb Pathog* 93:13–21
10. Buttery SH, Lloyd LC, Titchen DA (1976) Acute respiratory, circulatory and pathological changes in the calf after intravenous injections of the galactan from *Mycoplasma mycoides* subsp. *mycoides*. *J Med Microbiol* 9:379–391
11. Mwirigi M, Nkando I, Olum M, Attah-Poku S, Ochanda H, Berberov E, Potter A, Gerdtz V, Perez-Casal J, Wesonga H, Soi R, Naessens J (2016) Capsular polysaccharide from *Mycoplasma mycoides* subsp. *mycoides* shows potential for protection against contagious bovine pleuropneumonia. *Vet Immunol Immunopathol* 178:64–69
12. Houshaymi BM, Miles RJ, Nicholas RA (1997) Oxidation of glycerol differentiates African from European isolates of *Mycoplasma mycoides* subspecies *mycoides* SC (small colony). *Vet Rec* 140:182–183
13. Pilo P, Vilei EM, Peterhans E, Bonvin-Klotz L, Stoffel MH, Dobbelaere D, Frey J (2005) A metabolic enzyme as a primary virulence factor of *Mycoplasma mycoides* subsp. *mycoides* small colony. *J Bacteriol* 187:6824–6831
14. Scacchia M, Sacchini F, Filippini G, Luciani M, Lelli R, Tjipura-Zaire G, Di Provido A, Shiningwane A, Ndiipanda F, Pini A, Caporale V, Hübschle OJ (2007) Clinical, humoral and IFN γ responses of cattle to infection with *Mycoplasma mycoides* var. *mycoides* small colony and attempts to condition the pathogenesis of the infection. *Onderstepoort J Vet Res* 74:251–263
15. Sacchini F, Luciani M, Salini R, Scacchia M, Pini A, Lelli R, Naessens J, Poole J, Jores J (2012) Plasma levels of TNF- α , IFN- γ , IL-4 and IL-10 during a course of experimental contagious bovine pleuropneumonia. *BMC Vet Res* 8:44
16. Nkando IG, Wesonga HO, Kuria JKN, McKeever D (2010) Assessing the effectiveness of intubation as challenge model in contagious bovine pleuropneumonia vaccine experiments. *Trop Anim Health Prod* 42:1743–1747
17. Jores J, Mariner JC, Naessens J (2013) Development of an improved vaccine for contagious bovine pleuropneumonia: an African perspective on challenges and proposed actions. *Vet Res* 44:122
18. Bischof DF, Janis C, Vilei EM, Bertoni G, Frey J (2008) Cytotoxicity of *Mycoplasma mycoides* subsp. *mycoides* small colony type to bovine epithelial cells. *Infect Immun* 76:263–269
19. Aye R, Mwirigi MK, Frey J, Pilo P, Jores J, Naessens J (2015) Cyto-adherence of *Mycoplasma mycoides* subsp. *mycoides* to bovine lung epithelial cells. *BMC Vet Res* 11:27
20. Krunkosky TM, Jordan JL, Chambers E, Krause DC (2007) *Mycoplasma pneumoniae* host-pathogen studies in an air-liquid culture of differentiated human airway epithelial cells. *Microb Pathog* 42:98–103
21. van Kuppeveld FJ, Johansson KE, Galama JM, Kissing J, Bölske G, van der Logt JT, Melchers WJ (1994) Detection of mycoplasma contamination in cell cultures by a mycoplasma group-specific PCR. *Appl Environ Microbiol* 60:149–152
22. Willoughby K, Valdazo-González B, Maley M, Gilray J, Nettleton PF (2006) Development of a real time RT-PCR to detect and type ovine pestiviruses. *J Virol Methods* 132:187–194
23. Van Poucke SG, Nicholls JM, Nauwynck HJ, Van Reeth K (2010) Replication of avian, human and swine influenza viruses in porcine respiratory explants and association with sialic acid distribution. *Virology* 407:38
24. Scacchia M, Tjipura-Zaire G, Lelli R, Sacchini F, Pini A (2011) Contagious bovine pleuropneumonia: humoral and pathological events in cattle infected by endotracheal intubation or by exposure to infected animals. *Vet Ital* 47:407–413
25. Anonymous (2014) Contagious caprine pleuropneumonia. In: Manual of diagnostic tests and vaccines for terrestrial animals, Chapter 2.7.5. OIE, Paris
26. Luciani M, Armillotta G, Manna L, Ciarelli A, Di Febo T, Krasteva I, Pini A, Sacchini F, D'Angelo AR (2016) Selection of a monoclonal antibody by ELISA, immunoblotting and Quartz Crystal Microbalance technology for immunohistochemical detection of *Mycoplasma mycoides* subsp. *mycoides*. *Vet Ital* 53:215–223. <https://doi.org/10.12834/VetIt.435.2084.2>
27. Winner F, Rosengarten R, Citti C (2000) In vitro cell invasion of *Mycoplasma gallisepticum*. *Infect Immun* 68:4238–4244
28. Bürki S, Gaschen V, Stoffel MH, Stojiljkovic A, Frey J, Kuehni-Boghenbor K, Pilo P (2015) Invasion and persistence of *Mycoplasma bovis* in embryonic calf turbinate cells. *Vet Res* 46:53
29. Niesalla HS, Dale A, Slater JD, Scholes SFE, Archer J, Maskell DJ, Tucker AW (2009) Critical assessment of an in vitro bovine respiratory organ culture system: a model of bovine herpesvirus-1 infection. *J Virol Methods* 158:123–129
30. Nunes SF, Murcia PR, Tiley LS, Brown IH, Tucker AW, Maskell DJ, Wood JL (2010) An ex vivo swine tracheal organ culture for the study of influenza infection. *Influenza Other Respir Viruses* 4:7–15
31. Patrono LV, Bonfante F, Zanardello C, Terregina C, Capua I, Murcia PR (2015) Phylogenetically distinct equine influenza viruses show different tropism for the swine respiratory tract. *J Gen Virol* 96:969–974
32. Stadtländer CT (2006) A model of the deciliation process caused by *Mycoplasma fermentans* strain incognitus on respiratory epithelium. *Scanning* 28:212–218
33. Thanawongnuwech R, Thacker B, Halbur P, Thacker EL (2004) Increased production of proinflammatory cytokines following infection with porcine reproductive and respiratory syndrome virus and *Mycoplasma pneumoniae*. *Clin Diagn Lab Immunol* 11:901–908
34. Niang M, Rosenbusch RF, DeBey MC, Niyo Y, Andrews JJ, Kaeberle ML (1998) Field isolates of *Mycoplasma ovipneumoniae* exhibit distinct cytopathic effects in ovine tracheal organ cultures. *Zentralbl Veterinarmed A* 45:29–40
35. Gabridge MG (1984) Respiratory tract organ cultures to assay attachment and pathogenicity of mycoplasmas. *Ann Microbiol* 135:33–38
36. Grivel JC, Margolis L (2009) Use of human tissue explants to study human infectious agents. *Nat Protoc* 4:256–269
37. Smith LK, Cidlowski JA (2010) Glucocorticoid-induced apoptosis of healthy and malignant lymphocytes. *Prog Brain Res* 182:1–30
38. Razin S, Yogev D, Naot Y (1998) Molecular biology and pathogenicity of mycoplasmas. *Microbiol Mol Biol Rev* 62:1094–1156
39. He J, Liu M, Ye Z, Tan T, Liu X, You X, Zeng Y, Wu Y (2016) Insights into the pathogenesis of *Mycoplasma pneumoniae* (review). *Mol Med Rep* 14:4030–4036
40. Caswell JL, Bateman KG, Cai HY, Castillo-Alcala F (2010) *Mycoplasma bovis* in respiratory disease of feedlot cattle. *Vet Clin N Am Food Anim Pract* 26:365–379
41. Kilic A, Kalender H, Eroksuz H, Muz A, Tasdemir B (2013) Identification by culture, PCR, and immunohistochemistry of mycoplasmas and their molecular typing in sheep and lamb lungs with pneumonia. *Trop Anim Health Prod* 45:1525–1531
42. Simionatto S, Marchioro SB, Maes D, Dellagostin OA (2013) *Mycoplasma hyopneumoniae*: from disease to vaccine development. *Vet Microbiol* 165:234–242
43. Löndt BZ, Brookes SM, Nash BJ, Núñez A, Stagg DA, Brown IH (2012) The infectivity of pandemic 2009 H1N1 and avian influenza viruses for pigs: an assessment by ex vivo respiratory tract organ culture. *Influenza Other Respir Viruses* 7:393–402
44. Cammarata G, Grieco V, Mandelli G (1996) Pulmonary changes in the early phase of contagious bovine pleuropneumonia. Histologic and immunohistochemical aspects. *Schweiz Arch Tierheilkd* 138:301–306
45. Scanziani E, Paltrinieri S, Boldini M, Grieco V, Monaci C, Giusti AM, Mandelli G (1997) Histological and immunohistochemical findings in thoracic lymph nodes of cattle with contagious bovine pleuropneumonia. *J Comp Pathol* 117:127–136
46. Bashiruddin JB, Santini FG, De Santis P, Visaggio MC, Di Francesco G, D'Angelo A, Nicholas RA (1999) Detection of *Mycoplasma mycoides* subspecies *mycoides* in tissues from an outbreak of contagious bovine pleuropneumonia by culture, immunohistochemistry and polymerase chain reaction. *Vet Rec* 145:271–274
47. Grieco V, Boldini M, Luini M, Finazzi M, Mandelli G, Scanziani E (2001) Pathological, immunohistochemical and bacteriological findings in kidneys of cattle with contagious bovine pleuropneumonia (CBPP). *J Comp Pathol* 124:95–101
48. Rosengarten R, Citti C, Glew M, Lischewski A, Droege M, Much P, Winner F, Brank M, Spergler J (2000) Host-pathogen interactions in mycoplasma pathogenesis: virulence and survival strategies of minimalist prokaryotes. *Int J Med Microbiol* 290:15–25

49. Rottem S (2003) Interaction of mycoplasmas with host cells. *Physiol Rev* 83:417–432
50. Hegde S, Hegde S, Spargser J, Brunthaler R, Rosengarten R, Chopra-Dewasthaly R (2014) In vitro and in vivo cell invasion and systemic spreading of *Mycoplasma agalactiae* in the sheep infection model. *Int J Med Microbiol* 304:1024–1031
51. Hu X, Yu J, Zhou X, Li Z, Xia Y (2014) Synergism between upregulation of Rab7 and inhibition of autophagic degradation caused by mycoplasma facilitates intracellular mycoplasma infection. *Mol Med Rep* 9:793–800
52. Nicholas RAJ, Rosales RS, Loria GR (2017) Mycoplasmaology: the big issues. *Anim Husb Dairy Vet Sci* 1:1–4
53. Dusančić D, Bercic RL, Cizelj I, Salmic S, Narat M, Bencina D (2009) *Mycoplasma synoviae* invades non-phagocytic chicken cells in vitro. *Vet Microbiol* 138:114–119
54. Yavlovich A, Rottem S (2007) Binding of host extracellular matrix proteins to *Mycoplasma fermentans* and its effect on adherence to, and invasion of HeLa cells. *FEMS Microbiol Lett* 266:158–162
55. Mulongo M, Frey J, Smith K, Schnier C, Wesonga H, Naessens J, McKeever D (2015) Vaccination of cattle with the N terminus of LppQ of *Mycoplasma mycoides* subsp. *mycoides* results in type III immune complex disease upon experimental infection. *Infect Immun* 83:1992–2000
56. Russell WMS, Burch RL (1959) The principles of humane experimental technique. In: Russell WMS, Burch RL (eds) *The progress of humane technique, Part two*. Methuen, London

Submit your next manuscript to BioMed Central
and we will help you at every step:

- We accept pre-submission inquiries
- Our selector tool helps you to find the most relevant journal
- We provide round the clock customer support
- Convenient online submission
- Thorough peer review
- Inclusion in PubMed and all major indexing services
- Maximum visibility for your research

Submit your manuscript at
www.biomedcentral.com/submit

