



HAL
open science

Chiroptical properties of cryptophane-111

Thierry Buffeteau, Delphine Pitrat, Nicolas Daugey, Nathalie Calin, Marion Jean, Nicolas Vanthuyne, Laurent Ducasse, Frank Wien, Thierry Brotin

► **To cite this version:**

Thierry Buffeteau, Delphine Pitrat, Nicolas Daugey, Nathalie Calin, Marion Jean, et al.. Chiroptical properties of cryptophane-111. *Physical Chemistry Chemical Physics*, 2017, 19 (28), pp.18303 - 18310. 10.1039/c7cp02045g . hal-01682735

HAL Id: hal-01682735

<https://hal.science/hal-01682735v1>

Submitted on 14 Apr 2018

HAL is a multi-disciplinary open access archive for the deposit and dissemination of scientific research documents, whether they are published or not. The documents may come from teaching and research institutions in France or abroad, or from public or private research centers.

L'archive ouverte pluridisciplinaire **HAL**, est destinée au dépôt et à la diffusion de documents scientifiques de niveau recherche, publiés ou non, émanant des établissements d'enseignement et de recherche français ou étrangers, des laboratoires publics ou privés.

Chiroptical properties of cryptophane-111†

Thierry Buffeteau,^a Delphine Pitrat,^b Nicolas Daugey,^a Nathalie Calin,^b Marion Jean,^c Nicolas Vanthuynne,^c Laurent Ducasse,^a Frank Wien^d and Thierry Brotin^{*b}

The two enantiomers of cryptophane-111 (**1**), which possesses the most simplified chemical structure of cryptophane derivatives and exhibits the highest binding constant for xenon encapsulation in organic solution, were separated by HPLC using chiral stationary phases. The chiroptical properties of [CD(+)₂₅₄]-**1** and [CD(-)₂₅₄]-**1** were determined in CH₂Cl₂ and CHCl₃ solutions by polarimetry, electronic circular dichroism (ECD), vibrational circular dichroism (VCD), and Raman optical activity (ROA) experiments and were compared to those of cryptophane-222 (**2**) derivative. Synchrotron Radiation Circular Dichroism (SRCD) spectra were also recorded for the two enantiomers of **1** to investigate low-lying excited states in the ¹B_g region. Time-dependent density functional theory (TDDFT) calculations of the ECD and SRCD as well as DFT calculations of the VCD and ROA allowed the [CD(-)₂₅₄]-*PP*-**1** and [CD(+)₂₅₄]-*MM*-**1** absolute configurations for **1** in CH₂Cl₂ and CHCl₃ solutions. Similar configurations were found in the solid state from X-ray crystals of the two enantiomers but the chemical structures are significantly different from the one calculated in solution. In addition, the chiroptical properties of the two enantiomers of **1** were independent of the nature of the solvent, which is significantly different to that observed for cryptophane-222 compound. The lack of solvent molecule (CH₂Cl₂ or CHCl₃) within the cavity of **1** can explain this different behaviour between **1** and **2**. Finally, we show in this article that the encapsulation of xenon by **1** can be evidenced by ROA following the symmetric breathing mode of the cryptophane-111 skeleton at 150 cm⁻¹.

Introduction

The cryptophane backbone displays a very simple and easily recognizable chemical structure, which is composed of six aromatic rings positioned into a rigid molecular frame.^{1,2} The six aromatic rings are assembled into two independent cyclo-tribenzylene (CTB) sub-units connected together by three

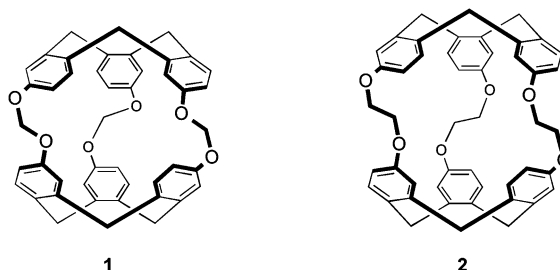
linkers, whose length and nature can be varied. This structure generates a lipophilic cavity that can accommodate a large variety of guest molecules, such as halogenomethanes and ammonium salts, or atoms in organic or aqueous solutions.² The cryptophane-111 skeleton (compound **1** in Scheme 1) appears as the most simplified structure of cryptophane derivatives and its synthesis has been reported for the first time in 2007.³ This compound exhibits the highest binding constant (10⁴ M⁻¹ at 293 K) for xenon encapsulation in organic solvent but it does not bind halogenomethanes due to its small internal cavity.^{3,4} In 2010, Rousseau and co-workers published a high-yielding scalable

^a Bordeaux University, Institut des Sciences Moléculaires, CNRS UMR 5255, 33405 Talence, France. E-mail: t.buffeteau@ism.u-bordeaux1.fr

^b Lyon 1 University, Ecole Normale Supérieure de Lyon, CNRS UMR 5182, Laboratoire de Chimie, 69364 Lyon, France. E-mail: thierry.brotin@ens-lyon.fr

^c Aix-Marseille University, CNRS, Centrale Marseille, iSm2, Marseille, France

^d Synchrotron SOLEIL, L'Orme des Merisiers, 91192 Gif sur Yvette, France



Scheme 1 Chemical structures of *PP*-**1** and *PP*-**2**.^{18,19}

synthesis of this derivative by optimizing the cyclotriphenolene unit dimerization,⁵ whereas Holman and co-workers reported the X-ray structure of the racemate of **1** and the first water-soluble cryptophane-111 with Ru complexes.⁶ Later, in 2011, Rousseau and co-workers published the synthesis of a metal-free water-soluble cryptophane-111.⁷ Finally, Holman and co-workers reported the first rim-functionalized derivatives of cryptophane-111 ((MeO)₃-111 and Br₃-111), which limit the range of achievable conformations of the cryptophane-111 skeleton,⁸ and they also showed the very high thermal stability (up to about 300 °C) of the Xe@**1** complex in the solid state.⁹

Besides their interesting binding properties, most of the cryptophane derivatives exhibit an inherently chiral structure due to the anti arrangement of the linkers or to the presence of two different CTB caps. Thus, the anti arrangement of the methylenedioxy linkers makes **1** a chiral molecule. During the past decade, we have thoroughly investigated enantiopure cryptophanes using several techniques such as polarimetry, electronic circular dichroism (ECD), vibrational circular dichroism (VCD), and Raman optical activity (ROA) because the chiroptical properties of these derivatives are extremely sensitive to the encapsulation of guest molecules.^{10–17} For instance, water-soluble cryptophanes display unique chiroptical properties depending on the nature of the guest (neutral or charged species) present within the cavity of the host.^{10–14} In addition, cryptophane-222 (compound **2** in Scheme 1) possesses unusual chiroptical properties in organic solvents never observed before with cryptophane derivatives.¹⁷ Indeed, a very different behaviour of the specific optical rotation (SOR) values was observed in the nonresonance region above 365 nm in CHCl₃ and CH₂Cl₂ solutions. This feature was related to conformational changes of the three ethylenedioxy linkers upon encapsulation of the two solvent molecules by **2**. This explanation could be confirmed by investigating the chiroptical properties of the new derivative **1**. Indeed, **1** differs from **2** only by the length of the three linkers connecting the two CTB units, leading to a smaller size of the cavity. Moreover, the three portals of **1** are too small to allow any solvent molecules to enter the cavity of the host. Even CH₂Cl₂ ($V_{\text{vdw}} = 52 \text{ \AA}^3$) is too large to cross the portals of **1**, leaving the cavity only accessible for smaller guests such as methane or xenon.⁴ In addition, the replacement of ethylenedioxy by methylenedioxy linkers presents the advantage to decrease the number of conformations for the three bridges. Thus, we believe that the two enantiomers of **1** are important compounds for understanding the role of the solvent on the chiroptical properties of cryptophane derivatives in general. A change of the chiroptical properties of **1** regardless of the nature of the solvent will tend to demonstrate that the bulk solvent plays an important role in the chiroptical properties of cryptophane. In contrast, a lack of modification on the chiroptical properties of **1** will show that only the solvent molecule present within the cavity of the cryptophanes (that is the case for **2**) has an effect on their chiroptical properties.

In this article we focus our attention on the chiroptical properties of **1** since they have never been reported in the literature, probably due to the difficulties encountered for the optical resolution of **1** into its two enantiomers (+)-**1** and (–)-**1**.

In addition, the simplified chemical structure of **1** (87 atoms) allows more sophisticated theoretical calculations (better basis set) for the prediction of the VCD, ROA and ECD spectra by using density functional theory (DFT and time-dependent DFT) methods.

We report in this article the separation of the two enantiomers of **1** by high-performance liquid chromatography (HPLC) using chiral stationary phases and the detailed study of their chiroptical properties in CHCl₃ and CH₂Cl₂ solutions by polarimetry, ECD, VCD, and ROA spectroscopy. Synchrotron Radiation Circular Dichroism (SRCD) spectra of the two enantiomers of **1** were also recorded in the two solvents to investigate the low-lying excited states in the ¹B_u region (190–220 nm). The chiroptical properties of **1** were compared to those recently published for **2**.¹⁷ DFT and TD-DFT calculations were performed to predict SOR values as well as the ECD, VCD, and ROA spectra for several geometries of **1**. The X-ray structures of these two enantiomers were also reported and compared to the optimized geometries of **1** calculated by DFT. Finally, the xenon encapsulation by **1** was followed by VCD and ROA spectroscopy.

Experimental

X-ray crystallography

X-ray structures of the two enantiomers of **1** were obtained from crystals mounted on a Kappa geometry diffractometer (Cu radiation) and using the experimental procedure previously published.¹⁶

CCDC 1537591 and 1537585 contain the crystallographic data of [CD(+)₂₅₄]-**1** and [CD(–)₂₅₄]-**1**, respectively.†

Polarimetric, UV-vis and ECD measurements

Optical rotations of the two enantiomers of **1** were measured in two solvents (CHCl₃, CH₂Cl₂) at several wavelengths (589, 577, 546, 436, and 365 nm) using a polarimeter with a 10 cm cell thermostated at 25 °C. Concentrations used for the polarimetric measurements were typically in the range 0.22–0.27 g/100 mL. ECD spectra of the two enantiomers of **1** were recorded in four solvents (CHCl₃, CH₂Cl₂, tetrahydrofuran (THF) and CH₃CN) at 20 °C with a 0.2 cm path length quartz cell (concentrations were in the range 5×10^{-5} – 1×10^{-4} M). Spectra were recorded in the wavelength ranges of 210–400 nm (THF and CH₃CN) or 230–400 nm (CH₂Cl₂ and CHCl₃) with a 0.5 nm increment and a 1 s integration time. Spectra were processed with standard spectrometer software, baseline corrected and slightly smoothed by using a third order least square polynomial fit. UV-vis spectra of the two enantiomers of **1** were recorded in CH₂Cl₂ (230–400 nm) and THF (210–400 nm) at 20 °C with a 0.5 and 0.2 cm path lengths quartz cell, respectively.

SRCD measurements

Synchrotron Radiation Circular Dichroism (SRCD) measurements were carried out at the DISCO beam-line, SOLEIL synchrotron.^{20,21} Samples of the two enantiomers of **1** were dissolved in CH₂Cl₂ and CHCl₃. Serial dilutions of the concentrations in view of data

collection in three spectral regions were chosen between 100 g L^{-1} , 10 g L^{-1} to 2.5 g L^{-1} . Accurate concentrations were reassessed by absorption measurements allowing the scaling of spectral regions to each other. Samples were loaded in circular demountable CaF_2 cells of $3.5 \mu\text{m}$ path lengths, using $2\text{--}4 \mu\text{L}$.²² Two consecutive scans for each spectral region of the corresponding dilution, were carried out for consistency and repeatability. CD-spectral acquisitions of 1 nm steps and 1 nm bandwidth, between $320\text{--}255 \text{ nm}$, $260\text{--}216 \text{ nm}$ and $232\text{--}170 \text{ nm}$ were performed at 1.2 s integration time per step for the samples. Averaged spectra were then subtracted from corresponding averaged baselines collected three times. The temperature was set to $20 \text{ }^\circ\text{C}$ with a Peltier controlled sample holder. Prior, (+)-camphor-10-sulfonic acid was used to calibrate amplitudes and wavelength positions of the SRCD experiment. Data-treatment including averaging, baseline subtraction, smoothing, scaling and standardisation were carried out with CDtool.²³

IR and VCD measurements

The IR and VCD spectra were recorded on an FTIR spectrometer equipped with a VCD optical bench,²⁴ following the experimental procedure previously published.¹⁶ Samples were held in a $250 \mu\text{m}$ path length cell with BaF_2 windows. IR and VCD spectra of the two enantiomers of **1** were measured in CDCl_3 and CD_2Cl_2 solvents at a concentration of 0.015 M . Additional spectra were measured in CDCl_3 in presence of xenon.

ROA measurements

Raman and ROA spectra were recorded on a ChiralRAMAN spectrometer, following the experimental procedure previously published.¹⁵ The two enantiomers of **1** were dissolved in CDCl_3 and CD_2Cl_2 solvents at a concentration of 0.1 M and filled into fused silica microcell ($4 \times 3 \times 10 \text{ mm}$). The laser power was 200 mW ($\sim 80 \text{ mW}$ at the sample). The presented spectra in CDCl_3 (CD_2Cl_2) are an average over about 32 (52) h. Additional experiments were performed in the two solvents in presence of xenon.

Theoretical calculations

All DFT and TDDFT calculations were carried out with Gaussian 09.²⁵ Preliminary conformer distribution search of **1** was performed at the molecular mechanics level of theory, employing MMFF94 force fields incorporated in ComputeVOA software package. Twenty one conformers were found within roughly 8 kcal mol^{-1} of the lowest energy conformer. Their geometries were optimized at the DFT level using B3PW91 functional²⁶ and 6-31G** basis set,²⁷ leading to ten different conformers within a energetic window of $7.5 \text{ kcal mol}^{-1}$. Finally, only the three lowest energetic geometries were kept, and reoptimized with the use of IEFPCM model of solvent (CH_2Cl_2 and CHCl_3).^{28,29} Vibrational frequencies, IR and VCD intensities, and ROA intensity tensors (excitation at 532 nm) were calculated at the same level of theory. For comparison to experiment, the calculated frequencies were scaled by 0.968 and the calculated intensities were converted to Lorentzian bands with a full-width at half-maximum (FWHM) of 9 cm^{-1} .

Optical rotation calculations have been carried out at several standard wavelengths (365 , 436 , 532 and 589 nm) by means of DFT methods (B3PW91/6-31G**) for the three conformers reoptimized with the use of PCM solvent model.

ECD spectra were calculated at the time-dependent density functional theory (TDDFT) level using the MPW1K functional³⁰ and the 6-31+G* basis set. Calculations were performed for the three conformers reoptimized with the use of PCM solvent model (IEFPCM = CH_2Cl_2), considering 120 excited states. For comparison to experiment, the rotational strengths were converted to Gaussian bands with a FWHM of 0.1 eV .

Results

Synthesis and HPLC separation of the two enantiomers of **1**

The racemic mixture of **1**, (*rac*)-**1**, was prepared according to a known procedure (Fig. S1 in the ESI†).³ Compound **1** does not possess any substituent that could be exploited for separating the two enantiomers of **1** by the formation of diastereomeric derivatives. Consequently, the two enantiomers of **1** were separated using a chiral HPLC column (Chiralpak ID, eluent: heptane/EtOH/ CHCl_3 $50/30/20$, 1 mL min^{-1}), which allowed the efficient separation of the two enantiomers of **1** with an excellent resolution factor ($R_s = 3.24$), as shown in Fig. 1. A circular dichroism detector provided the sign of each enantiomer at 254 nm . It was observed that enantiomer $[\text{CD}(-)_{254}]\text{-1}$ was first eluted at $t = 6.83 \text{ min}$, followed by enantiomer $[\text{CD}(+)_{254}]\text{-1}$ at $t = 9.02 \text{ min}$. To obtain the two enantiomers in fair quantities, a semipreparative Chiralpak ID column ($250 \times 10 \text{ mm}$, eluent: Hexane/EtOH/ CHCl_3 $50/10/40$, 5 mL min^{-1}) was used. 770 injections ($170 \mu\text{L}$) every 1.8 min were necessary to separate 350 mg of the racemic mixture of **1**. The first eluted enantiomer, $[\text{CD}(-)_{254}]\text{-1}$, was collected between 4.1 and 4.7 min and the second one, $[\text{CD}(+)_{254}]\text{-1}$, between 5.0 and 5.6 min . After this semipreparative separation, the enantiomeric excess (ee) of the two collected enantiomers was measured by analytical HPLC (Fig. S2 in the

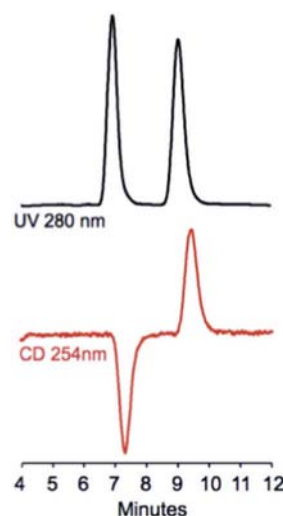


Fig. 1 Separation of the two enantiomers of **1** using an analytical chiral HPLC column.

ESI[†]). Thus, from 350 mg of racemic material, 160 mg of each enantiomer were obtained with an excellent enantiomeric excess (ee > 99% for [CD(-)₂₅₄]-1 and ee > 99.5% for [CD(+)₂₅₄]-1). In order to improve the chemical purity of the two compounds, an additional purification step was conducted on both enantiomers. Thus, compounds [CD(+)₂₅₄]-1 and [CD(-)₂₅₄]-1 were purified on silica gel (eluent: CH₂Cl₂/acetone 90/10) and then recrystallized in a mixture of CH₂Cl₂/EtOH. These additional purification steps provide both enantiomers with high chemical purity. The ¹H NMR and ¹³C NMR spectra (Fig. S3–S6 in the ESI[†]) are identical to those reported for (*rac*)-1.

X-ray crystallographic structures of the two enantiomers of 1

X-ray crystals of [CD(+)₂₅₄]-1 and [CD(-)₂₅₄]-1 were obtained in a CH₂Cl₂/EtOH mixture and in pyridine, respectively (Fig. S7a and b in the ESI[†]). The crystallographic data of the two X-ray crystal structures are reported in the ESI[†] (Table S1).

Compounds [CD(-)₂₅₄]-1 and [CD(+)₂₅₄]-1 crystallize in *P*₂₁₂₁ and *P*₂₁ space groups, respectively. No disorder was observed in the two X-ray structures and the cavities do not contain any substrate (solvent or gas molecules). The two enantiomers adopt a contracted conformation of the bridges that minimizes the internal cavity volume. Using a probe radius of 1.4 Å, the estimated cavity volume of [CD(+)₂₅₄]-1 and [CD(-)₂₅₄]-1 were 30 and 32 Å³, respectively. It is noteworthy that these two X-ray structures are significantly different from the one reported for the racemate.⁶ Indeed, the X-ray structures of the two enantiopure derivatives adopt a more flattened shape with respect to the X-ray structure of the racemate, characterized by a large twist angle of 55.3° between the two CTB caps.³¹ For the racemate, a twist angle of 18.1° was found between the two CTB caps, associated with a cavity volume of 72 Å³.⁶ Interestingly, these structures are also less symmetrical than the one observed for racemate and a topview of these two structures reveals that the six benzene rings are totally eclipsed (Fig. S8 in the ESI[†]). In contrast, the X-ray structure of the racemic derivative shows a strong overlapping of the phenyl rings.

Polarimetry and electronic circular dichroism

The two enantiomers of 1 are well soluble in CH₂Cl₂ and CHCl₃ but unfortunately they show poor solubility in other organic solvents. Thus, polarimetric experiments were performed only in CH₂Cl₂ and CHCl₃ solutions. The specific optical rotation (SOR) values of the two enantiomers of 1 are reported in the ESI[†] (Table S2) and the wavelength dependence of [CD(+)₂₅₄]-1 is shown in Fig. 2. In CH₂Cl₂, the SOR values of [CD(+)₂₅₄]-1 are slightly positive at 589 and 577 nm, close to zero at 546 nm and significantly negative at 436 and 365 nm. Nevertheless, despite the low values measured for this compound at 589, 577 and 546 nm, SOR values with opposite sign are obtained for the two enantiomers of 1 (Table S2, ESI[†]). In CHCl₃, the wavelength dependence of the SOR values evolves similarly with values slightly higher. This result contrasts with the measurements performed with compound 2 that exhibited significant differences in CH₂Cl₂ and CHCl₃ solutions. Finally, as previously observed with compound 2,¹⁷ a change of the SOR sign is

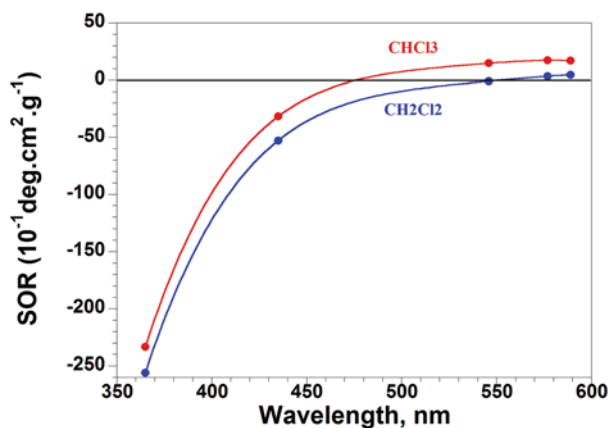


Fig. 2 Specific optical rotation values (10⁻¹ deg cm² g⁻¹) of [CD(+)₂₅₄]-1 recorded at several wavelengths (365, 436, 546, 577 and 589 nm) in chloroform (c = 0.22), and dichloromethane (c = 0.27) solvents.

observed in the nonresonant region (around 546 nm in CH₂Cl₂ and 475 nm in CHCl₃).

UV-Vis and ECD experiments require lower concentration of solute and consequently this allows us to extend the range of solvents. Thus, UV-Vis and ECD spectra of [CD(+)₂₅₄]-1 and [CD(-)₂₅₄]-1 were successfully recorded in CH₂Cl₂, CHCl₃, THF, and CH₃CN solvents. The UV-Vis spectra measured in THF and CH₂Cl₂ solvents are reported in Fig. S9 in the ESI[†]. These spectra are very similar to those published for compound 2.¹⁷ The ECD spectra of the two enantiomers are reported in Fig. S10 in the ESI[†] for the four solvents. A perfect mirror image is observed in all solvents for the two enantiomers as expected for enantiomers with high enantiomeric excess. For CH₂Cl₂ and CHCl₃ solutions, the ECD spectra give only access to the bands corresponding to the two forbidden ¹L_a and ¹L_b transitions in the UV-visible region (230–300 nm). For THF and CH₃CN solutions, the spectral range can be extended up to 210 nm. This allows us to have access to another spectral region corresponding to the allowed ¹B_b transition. This spectral region usually gives rise to intense ECD signals in organic solution. It was observed that the ECD spectra of [CD(+)₂₅₄]-1 and [CD(-)₂₅₄]-1 are very similar in shape and intensity, regardless of the nature of the solvent used in these experiments. For instance, in CH₂Cl₂ the ECD spectrum of the [CD(+)₂₅₄]-1 enantiomer shows four bands, as shown in Fig. 3. Three ECD bands (two negative and one slightly positive from high to low wavelengths) are observed in the spectral region related to the ¹L_b transition (260–300 nm). At shorter wavelengths, only a single positive ECD band was observed between 230 and 255 nm (¹L_a transition). Interestingly, it can be noticed that the ECD spectra of [CD(+)₂₅₄]-1 and [CD(-)₂₅₄]-2 show a lot of similarities even though some significant spectral differences are observed especially in the ¹L_a region. Indeed, the bisignate ECD signal usually observed in the ¹L_a region for cryptophane derivatives and observed for [CD(-)₂₅₄]-2 is no longer present in the ECD spectrum of [CD(+)₂₅₄]-1. In the past, the sign of this bisignate ECD signal was exploited to determine the absolute configuration (AC) of cryptophane-A molecule.³² Then, we have

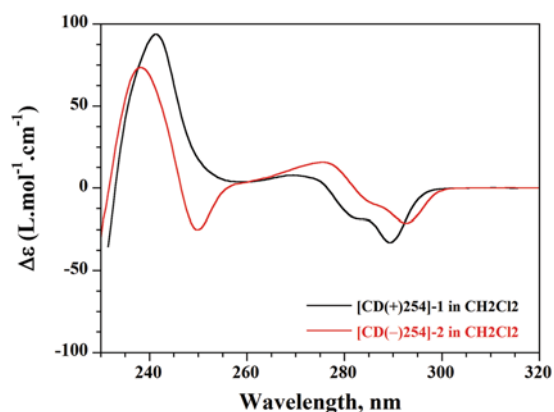


Fig. 3 Comparison of experimental ECD spectra of [CD(+)₂₅₄]-1 (black spectrum) and [CD(-)₂₅₄]-2 (red spectrum) in CH₂Cl₂ solution.

confirmed that this approach could be used to assign the AC of other cryptophane derivatives in organic solution. This study shows that the approach can not be used for cryptophane-111.

Synchrotron radiation circular dichroism experiments were also performed to obtain additional information at lower wavelengths, in the ¹B_b region (180–230 nm). The SRCD spectra of the two enantiomers of **1** recorded in CH₂Cl₂ and CHCl₃ are reported in Fig. S11 in the ESI.† For wavelengths higher than 230 nm, the SRCD spectra of [CD(+)₂₅₄]-1 and [CD(-)₂₅₄]-1 are identical in shape and intensities to the ECD spectra described above. For wavelengths lower than 230 nm, the SRCD spectra reveal two additional bands with opposite sign. For instance, the [CD(+)₂₅₄]-1 enantiomer exhibits in CH₂Cl₂ a positive-negative bisignate pattern from short to long wavelengths related to the ¹B_b transition. It is noteworthy that similar (in shape and in intensities) SRCD spectra were recorded in CHCl₃ solution, in contrast to what was observed for compound **2**.¹⁷

VCD and ROA spectroscopy

The chiroptical properties of enantiopure cryptophane **1** have been also investigated by VCD in CDCl₃ and CD₂Cl₂ solutions. The IR spectra of the [CD(+)₂₅₄]-1 enantiomer are similar in the 1700–1000 cm⁻¹ region for the two solutions (Fig. S12 in ESI†). In addition, the presence of xenon in the CDCl₃ solution does not modify the IR spectrum in this spectral range. The VCD spectra of the two enantiomers of **1** measured in CDCl₃ and CD₂Cl₂ solvents are reported in Fig. S13 in ESI,† whereas the comparison of experimental VCD spectra of [CD(+)₂₅₄]-1 in the two solvents is presented in Fig. 4. As shown in Fig. 4, the VCD spectra of **1** seem independent of the nature of the solvent, even though slight spectral differences are observed in the 1050–1010 cm⁻¹ region. In addition, a slightly lower intensity of the VCD bands is observed in CD₂Cl₂ solution, which can be related to the lower molar absorptivities measured in CD₂Cl₂ with respect to CDCl₃ solution. Finally, the presence of xenon in the CDCl₃ solution does not modify the VCD spectrum of [CD(+)₂₅₄]-1 (Fig. S14 in ESI†).

The ROA spectra of the two enantiomers of **1** measured in CDCl₃ solution (0.1 M), in presence or not of xenon, are shown

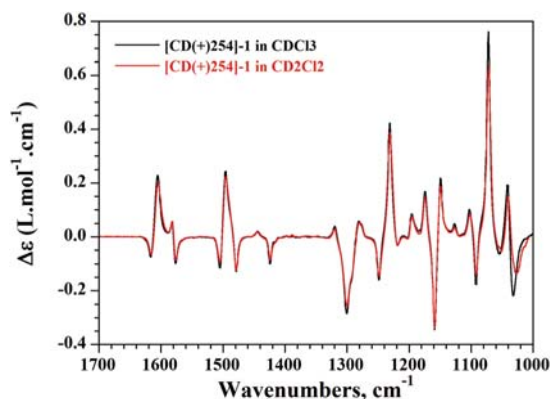


Fig. 4 Comparison of experimental VCD spectra of [CD(+)₂₅₄]-1 in CDCl₃ (black spectrum) and in CD₂Cl₂ (red spectrum) solutions.

in Fig. S15 in ESI.† These ROA spectra are nearly perfect mirror images (Fig. S15a and b in ESI†), as expected for enantiopure materials. The ROA spectra measured in CD₂Cl₂ solution were similar (Fig. S15c and d in ESI†), indicating that the ROA spectra of **1** is independent of the solvent, as already mentioned for ECD and VCD experiments. On the other hand, the ROA spectra of [CD(+)₂₅₄]-1 in CD₂Cl₂ solution in presence or not of xenon reveal a clear spectral difference at wavenumbers lower than 200 cm⁻¹, as shown in Fig. 5. Indeed, in presence of xenon, we observe an important decrease of the intensity of the band at 150 cm⁻¹. The same effect is observed on ROA spectra measured in CDCl₃ solution (Fig. S16 in ESI†). The vibrational assignment of this mode was made by visual inspection of modes represented and animated by using the Agui program. All the displacement vectors of carbon atoms point towards the center of the cavity, indicating that this mode corresponds to the symmetric breathing mode of the cryptophane-111 skeleton. This result clearly indicates that the presence of a guest inside the cavity of a cryptophane derivative modifies the intensity of its symmetric breathing mode. The examination of this mode could be used in the future to reveal the complexation of guest molecules by cryptophane derivatives. However, it is noteworthy that it

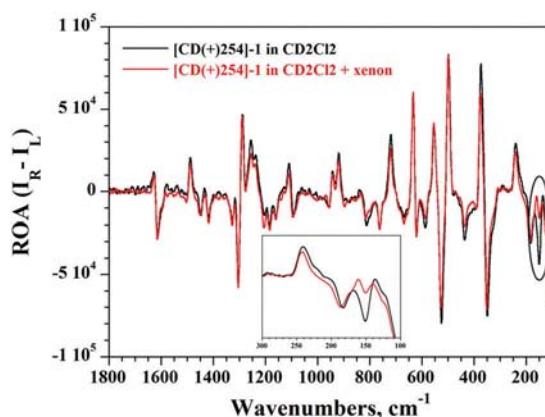


Fig. 5 Comparison of experimental ROA spectra of [CD(+)₂₅₄]-1 in CD₂Cl₂ solution in presence (red spectrum) or not (black spectrum) of xenon.

would not be possible to observe this effect for the compound **2** in CHCl_3 or CH_2Cl_2 solutions, since these two solvent molecules can enter the cavity of **2** and would be therefore strong competitors for xenon.

Discussion

AC and conformational analysis of **1**

As it is now recommended, different techniques have been used to assign unambiguously the absolute configuration (AC) of the two enantiomers of **1**.³³⁻³⁵ Thanks to the determination of the Flack and Hooft parameters, the X-ray crystallography analysis provides an easy way to determine the AC of the two $[\text{CD}(+)_{254}]\text{-1}$ and $[\text{CD}(-)_{254}]\text{-1}$ enantiomers. Thus, based on the analysis of the two X-ray structures, the following assignment $[\text{CD}(+)_{254}]\text{-MM-1}$ and $[\text{CD}(-)_{254}]\text{-PP-1}$ has been found for the two enantiomers of **1**. Consequently, considering the specific optical rotation measured at 589 nm the AC become $(+)_{589}\text{-MM-1}$ and $(-)_{589}\text{-PP-1}$. It is noteworthy that these last descriptors are identical to those determined for compound **2**, as suggested by the similarity observed in their experimental ECD spectra (Fig. 3).

To confirm the AC of the two enantiomers of **1**, determined by X-ray crystallography, we have used VCD and ROA spectroscopy associated with DFT calculations, which are known to be a valuable approach to assign the AC of organic compounds. Conformer distribution search was performed at the molecular mechanics level of theory for the *MM-1* configuration, starting from the more symmetrical structure obtained from X-ray analysis of the racemic compound.⁶ Twenty one conformers within roughly 8 kcal mol⁻¹ of the lowest energy conformer were found and their geometries optimized at the DFT level (B3PW91/6-31G**), leading to ten different conformers. The electronic and Gibbs energies as well as the twist angle between the two CTB caps for the three most stable conformers are reported in Table 1 and compared to those calculated from the optimized geometries of the enantiomer crystals. The conformer A leads to the lowest Gibbs free energy and represents more than 99% of the Boltzmann population of conformers at 298 K. This conformer exhibits the most symmetrical structure with an average value of the twist angle between the two CTB caps of 19.1° (dihedral angles³¹ of 19.0, 19.1 and 19.1). Conformers B and C present higher twist angles with average values of 23.6° and 28.7°, respectively. It is noteworthy that the structure is less symmetrical than for conformer A with one

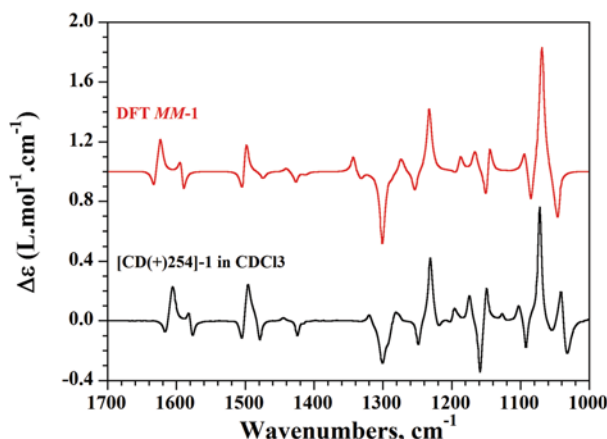


Fig. 6 Comparison of the experimental VCD spectrum of $[\text{CD}(+)_{254}]\text{-1}$ recorded in CDCl_3 solution with the calculated spectrum at the B3PW91/6-31G** level (IEFPCM = CHCl_3) for conformer A of *MM-1*.

dihedral angle, which differs from the two others (21.1°, 21.5° and 28.3° for conformer B and 23.8°, 31.1° and 31.2° for conformer C).

As shown in Fig. 6, the VCD spectrum predicted for the *MM* configuration of conformer A reproduces very well the sign of most of the bands observed in the experimental spectrum of $[\text{CD}(+)_{254}]\text{-1}$, confirming the AC assignment $[\text{CD}(+)_{254}]\text{-MM-1}$, determined by X-ray crystallography. A very good agreement between predicted ROA spectrum of conformer A and experimental ROA spectrum is also obtained (Fig. S17 in ESI†). This conformational analysis shows that only one conformer is present for **1**, contrary to the conformational equilibrium observed for **2** due to the ethylenedioxy linkers (*i.e.* possibility of *trans* and *gauche* conformations of the three linkers). This lack of conformational equilibrium for **1** may explain the overall higher intensities of the VCD bands for **1** and the lowest FWHM (9 cm⁻¹ for **1** vs. 14 cm⁻¹ for **2**) used to reproduce the experimental VCD spectrum for **1**.

As above mentioned, the bisignate pattern observed in the ¹L_a region (230–260 nm) of the ECD spectra of cryptophane derivatives can be another way to determine the AC of these derivatives in organic solvents.^{16,17} Using the Khun-Kirkwood excitonic model, Gottarelli and co-workers have shown that this bisignate resulted from different excited states (one A₂ and two degenerate E components) for cryptophane possessing a D₃-symmetry.³² For the ¹L_a transition, the A₂ component is always located at lower energy and the two E components show opposite rotational strengths. This model leads to a positive/negative bisignate pattern (from short to long wavelength) for the *MM* configuration of cryptophane-A derivatives. For cryptophane-111, this bisignate pattern is not observed and this rule does not apply. Indeed, in the case of compound **1**, TD-DFT calculations show that the A₂ component located at high wavelength possesses a lower negative rotational strength ($R = -0.38$ cgs) than the one measured for compound **2** ($R = -0.70$ cgs). Thus, the contribution of the A₂ component in the experimental ECD spectrum is embedded in the two E

Table 1 Conformations, twist angles and energies of the three conformers of *MM-1* calculated from the crystal of (*rac*)-**1**, and of the one calculated from the crystal of *MM-1*

Conformers	Twist angle	Energy (hartrees)		ΔG (kcal mol ⁻¹)	%
		Electronic	Gibbs		
A	19.1	-2187.01467627	-2186.367759	0	99.7
B	23.6	-2187.00811518	-2186.362379	3.38	0.3
C	28.7	-2187.00412196	-2186.359201	5.26	0.0
Crystal <i>MM-1</i>	55.3	-2187.00057700	-2186.355790	7.51	0.0

components exhibiting a larger rotational strength ($R = 1.05$ cgs), leading to a broader positive band in the 1L_a region. The strong decrease of the negative A_2 component of the 1L_a transition suggests that the classical excitonic coupling model can not be used to determine the AC of cryptophane-111 molecule and that other contributions should be involved in the interpretation of the ECD spectrum. For instance, as it has been reported by Pescitelli and co-workers in some cases,^{36,37} the coupling between the electric and magnetic transition moments (μ_m term) can contribute significantly to the overall rotational strength for a given excited state. This contribution, which is usually neglected in the case of the classical excitonic coupling model, can dominate the electric–electric coupling (μ_e term). Nevertheless, the bisignate pattern observed in the 1B_b region (190–230 nm) of the SRCD spectra can be used to determine the AC of **1**. Indeed, the positive–negative sequence from short to long wavelength observed for $[CD(+)]_{254}$ -**1** was associated with the *MM* configuration by TD-DFT calculations (Fig. S18 in ESI†).

Comparison between the chiroptical properties of **1** and **2**

In a recent article, different behaviours of the chiroptical properties (in particular, polarimetric properties) were observed for **2** in $CHCl_3$ and CH_2Cl_2 solutions.¹⁷ These modifications were interpreted by a subtle conformational equilibrium change of the ethylenedioxy linkers upon encapsulation of $CHCl_3$ and CH_2Cl_2 molecules. A preferential G_- conformation of the linkers was found in CH_2Cl_2 solution, in order to decrease the cavity size and to favour host–guest interactions. In contrast, a higher proportion of G_+ conformation of the linkers was found in $CHCl_3$ solution, increasing the size of the cavity suitable for the complexation of chloroform molecule.

The comparison of the chiroptical properties of **1** and **2** is very interesting because these two compounds possess identical CTB units and differ only by the nature of the alkyl linkers. The conformational equilibrium observed for compound **2** due to the possibility of *trans* and *gauche* (G_+ and G_-) conformations of the three ethylenedioxy linkers is not possible for compound **1** which possess methylenedioxy linkers. In addition, it has been shown that (*rac*)-**1** does not bind halogenomethane molecules so that neither CH_2Cl_2 nor $CHCl_3$ can enter its cavity.^{3,4} Thus, no spectral modification in the ECD (or SCRCD) and VCD (or ROA) spectra is expected for **1** in these two solvents. This assumption is confirmed by our experiments, as shown in the result section.

Our results reveal also that the SOR values of **1** behave similarly in the two solvents. We observe a change of the sign of the SOR values in the nonresonant region, as shown in Fig. 3. This surprising effect has been previously reported with compound **2** for experiments in chloroform, acetone and dimethylformamide. Calculations of the SOR at the B3PW91/6-31G** level (IEFPCM = $CHCl_3$) reproduce perfectly the experimental data measured in $CHCl_3$ solution (Fig. S19 in ESI†).

Conclusions

This article reports a thorough study of the chiroptical properties of the two enantiomers of cryptophane-111 (**1**) by X-ray

crystallography, polarimetry, ECD (SRCD), VCD, and ROA spectroscopy. The absolute configuration of the two enantiomers has been determined based on X-ray crystallographic data. Thus, the $(+)_589$ -*MM*-**1** ($(-)_589$ -*PP*-**1**) AC has been assigned. This result has been confirmed by the combined analysis of the VCD (ROA) spectra and DFT calculations. In a second part of this article, the chiroptical properties of **1** have been compared to those of cryptophane-222 (**2**). Despite the similarity in the two structures, derivatives **1** and **2** exhibit different behaviours of their chiroptical properties with respect to CH_2Cl_2 and $CHCl_3$ solvents. In these two solvents, polarimetric measurements and SRCD spectra are clearly different for compound **2**, whereas they remain almost unchanged for **1**. This different behaviour can be explained by the incapacity of compound **1** to encapsulate a solvent molecule within its cavity, regardless of the nature of the solvent. Consequently, the nature of the solvent has almost no influence on the conformation of the methylenedioxy linkers. This result confirms our previous assumption that the different chiroptical properties observed for **2** in chloroform and dichloromethane solutions are certainly due to the conformational equilibrium change of the ethylenedioxy linkers upon encapsulation of CH_2Cl_2 or $CHCl_3$ molecules.

Thus, the comparison of the chiroptical properties of cryptophane **1** and **2** sheds light on the importance of the solvent present within the cavity to understand the chiroptical properties of the cryptophane derivatives in general. In addition, our results show that the bulk solvent has no significant effect on the chiroptical properties of **1**.

Acknowledgements

Supports from the French Ministry of Research (project ANR-12-BSV5-0003 MAX4US) is acknowledged. The authors are indebted to the CNRS (Chemistry Department) and to Région Aquitaine for financial support in VCD and ROA equipments. They also acknowledge computational facilities provided by the MCIA (Mésocentre de Calcul Intensif Aquitain) of the Université de Bordeaux and of the Université de Pau et des Pays de l'Adour, financed by the "Conseil Régional d'Aquitaine" and the French Ministry of Research and Technology. The GDR 3712 Chirafun is acknowledged for allowing a collaborative network between the partners of this project.

Notes and references

- 1 A. Collet, *Tetrahedron*, 1987, **43**, 5725.
- 2 T. Brotin and J.-P. Dutasta, *Chem. Rev.*, 2009, **109**, 88.
- 3 H. A. Fogarty, P. Berthault, T. Brotin, G. Huber, H. Desvieux and J.-P. Dutasta, *J. Am. Chem. Soc.*, 2007, **129**, 10332.
- 4 K. E. Chaffee, H. A. Fogarty, T. Brotin, B. M. Goodson and J.-P. Dutasta, *J. Phys. Chem. A*, 2009, **113**, 13675.
- 5 T. Traoré, L. Delacour, S. Garcia-Argote, P. Berthault, J.-C. Cintrat and B. Rousseau, *Org. Lett.*, 2010, **12**, 960.

- 6 R. M. Fairchild, A. J. Akil., K. T. Holman, H. A. Fogarty, T. Brotin, J.-P. Dutasta, C. Boutin, G. Huber and P. Berthault, *J. Am. Chem. Soc.*, 2010, **132**, 15505.
- 7 T. Traoré, G. Clavé, L. Delacour, N. Kotera, P.-Y. Renard, A. Romieu, P. Berthault, C. Boutin, N. Tassali and B. Rousseau, *Chem. Commun.*, 2011, **47**, 9702.
- 8 A. I. Joseph, G. El-Ayle, C. Boutin, E. Léonce, P. Berthault and K. T. Holman, *Chem. Commun.*, 2014, **50**, 15905.
- 9 A. I. Joseph, S. H. Lapidus, C. M. Kane and K. T. Holman, *Angew. Chem., Int. Ed.*, 2015, **54**, 1471.
- 10 A. Bouchet, T. Brotin, D. Cavagnat and T. Buffeteau, *Chem. – Eur. J.*, 2010, **16**, 4507.
- 11 A. Bouchet, T. Brotin, M. Linares, H. Agren, D. Cavagnat and T. Buffeteau, *J. Org. Chem.*, 2011, **76**, 1372.
- 12 T. Brotin, R. Montserret, A. Bouchet, D. Cavagnat, M. Linares and T. Buffeteau, *J. Org. Chem.*, 2012, **77**, 1198.
- 13 T. Brotin, D. Cavagnat, P. Berthault, R. Montserret and T. Buffeteau, *J. Phys. Chem. B*, 2012, **116**, 10905.
- 14 T. Brotin, S. Goncalves, P. Berthault, D. Cavagnat and T. Buffeteau, *J. Phys. Chem. B*, 2013, **117**, 12593.
- 15 N. Daugey, T. Brotin, N. Vanthuyne, D. Cavagnat and T. Buffeteau, *J. Phys. Chem. B*, 2014, **118**, 5211.
- 16 T. Brotin, N. Daugey, N. Vanthuyne, E. Jeanneau, L. Ducasse and T. Buffeteau, *J. Phys. Chem. B*, 2015, **119**, 8631.
- 17 D. Pitrat, N. Daugey, M. Jean, N. Vanthuyne, F. Wien, L. Ducasse, N. Calin, T. Buffeteau and T. Brotin, *J. Phys. Chem. B*, 2016, **120**, 12650.
- 18 IUPAC Tentative Rules for the Nomenclature of Organic Chemistry. Section E. Fundamental Stereochemistry, *J. Org. Chem.*, 1970, **35**, 2849.
- 19 A. Collet, G. Gabard, J. Jacques, M. Césarío, J. Guilhem and C. Pascard, *J. Chem. Soc., Perkin Trans. 1*, 1981, 1630.
- 20 A. Giuliani, F. Jamme, V. Rouam, F. Wien, J.-L. Giogetta, B. Lagarde, O. Chubar, S. Bac, I. Yao and S. Rey, *et al.*, *J. Synchrotron Radiat.*, 2009, **16**, 835.
- 21 M. Réfrégiers, F. Wien, H.-P. Ta, L. Premvardhan, S. Bac, F. Jamme, V. Rouam, B. Lagarde, F. Polack and J.-L. Giogetta, *et al.*, *J. Synchrotron Radiat.*, 2012, **19**, 831.
- 22 F. Wien and B. A. Wallace, *Appl. Spectrosc.*, 2005, **59**, 1109.
- 23 J. G. Lees, B. R. Smith, F. Wien, A. J. Miles and B. A. Wallace, *Anal. Biochem.*, 2004, **332**, 285.
- 24 T. Buffeteau, F. Lagugné-Labarthe and C. Sourrisseau, *Appl. Spectrosc.*, 2005, **59**, 732.
- 25 M. J. Frisch, G. W. Trucks, H. B. Schlegel, G. E. Scuseria, M. A. Robb, J. R. Cheeseman, G. Scalmani, V. Barone, B. Mennucci and G. A. Petersson, *et al.*, *Gaussian 09, revision A.1*, Gaussian Inc., Wallingford CT, 2009.
- 26 J. P. Perdew and Y. Wang, *Phys. Rev. B: Condens. Matter Mater. Phys.*, 1992, **45**, 13244.
- 27 R. Ditchfield, W. J. Hehre and J. A. Pople, *J. Chem. Phys.*, 1971, **54**, 724.
- 28 J. Tomasi and M. Persico, *Chem. Rev.*, 1994, **94**, 2027.
- 29 J. Tomasi, B. Mennucci and R. Cammi, *Chem. Rev.*, 2005, **105**, 2999.
- 30 B. J. Lynch, P. L. Fast, M. Harris and D. G. Truhlar, *J. Phys. Chem. A*, 2000, **104**, 4811.
- 31 The twist angle between the two cyclotribenzylene caps is defined by the average dihedral angles between the arene ring centroids of OCH₂O-connected arenes with respect to the C₃ axis of the host.
- 32 J. Canceill, A. Collet, G. Gottarelli and P. Palmieri, *J. Am. Chem. Soc.*, 1987, **109**, 6454.
- 33 P. L. Polavarapu, *Chirality*, 2008, **20**, 664.
- 34 P. L. Polavarapu, *Chirality*, 2012, **24**, 909.
- 35 V. P. Nicu, A. Mandi, T. Kurtan and P. L. Polavarapu, *Chirality*, 2014, **26**, 525.
- 36 T. Bruhn, G. Pescitelli, S. Jurinovich, A. Schaumlöffel, F. Witterauf, J. Ahrens, M. Bröring and G. Bringmann, *Angew. Chem., Int. Ed.*, 2014, **53**, 14592.
- 37 S. Jurinovich, C. A. Guido, T. Bruhn, G. Pescitelli and B. Mennucci, *Chem. Commun.*, 2015, **51**, 10498.