



HAL
open science

Three-dimensional flow past a fixed or freely vibrating cylinder in the early turbulent regime

Simon Gsell, Rémi Bourguet, Marianna Braza

► **To cite this version:**

Simon Gsell, Rémi Bourguet, Marianna Braza. Three-dimensional flow past a fixed or freely vibrating cylinder in the early turbulent regime. *Physical Review Fluids*, 2018, vol. 3 (n° 1), pp. 013902. 10.1103/PhysRevFluids.3.013902 . hal-01681823

HAL Id: hal-01681823

<https://hal.science/hal-01681823>

Submitted on 11 Jan 2018

HAL is a multi-disciplinary open access archive for the deposit and dissemination of scientific research documents, whether they are published or not. The documents may come from teaching and research institutions in France or abroad, or from public or private research centers.

L'archive ouverte pluridisciplinaire **HAL**, est destinée au dépôt et à la diffusion de documents scientifiques de niveau recherche, publiés ou non, émanant des établissements d'enseignement et de recherche français ou étrangers, des laboratoires publics ou privés.



Open Archive TOULOUSE Archive Ouverte (OATAO)

OATAO is an open access repository that collects the work of Toulouse researchers and makes it freely available over the web where possible.

This is an author-deposited version published in: <http://oatao.univ-toulouse.fr/>
Eprints ID : 19434

To link to this article : DOI:10.1103/PhysRevFluids.3.013902
URL : <http://dx.doi.org/10.1103/PhysRevFluids.3.013902>

To cite this version :

Gsell, Simon and Bourguet, Rémi and Braza, Marianna. *Three-dimensional flow past a fixed or freely vibrating cylinder in the early turbulent regime*. (2018) *Physical Review Fluids*, vol. 3 (n° 1). pp. 013902. ISSN 2470-0053

Any correspondence concerning this service should be sent to the repository administrator: staff-oatao@listes-diff.inp-toulouse.fr

Three-dimensional flow past a fixed or freely vibrating cylinder in the early turbulent regime

Simon Gsell, Rémi Bourguet,^{*} and Marianna Braza

Institut de Mécanique des Fluides de Toulouse, IMFT, Université de Toulouse, CNRS - Toulouse, France



(Received 24 July 2017; published 10 January 2018)

The three-dimensional structure of the flow downstream of a circular cylinder, either fixed or subjected to vortex-induced vibrations, is investigated by means of numerical simulation, at Reynolds number 3900, based on the cylinder diameter and current velocity. The flow exhibits pronounced fluctuations distributed along the span in all studied cases. Qualitatively, it is characterized by spanwise undulations of the shear layers separating from the body and the development of vortices elongated in the plane normal to its axis (planar vortices). A quantitative analysis of crossflow vorticity fluctuations in the spanwise direction reveals a peak of fluctuation amplitude in the near region (i.e., area of formation of the spanwise wake vortices) and opposite trends of the spanwise wavelength in the shear layer and wake regions; the wavelength tends to decrease as a function of the streamwise distance in the shear layers down to a minimum value close to 0.5 body diameters and then slowly increases further in the wake. The spanwise structure of the flow is differently altered in these two regions, once the cylinder vibrates. In the shear layer region, body motion is associated with an enhancement of planar vortex formation. The amplification of vorticity spanwise fluctuations in this region is accompanied by a reduction of the spanwise wavelength; it is found to decrease as a function of the instantaneous Reynolds number based on the instantaneous flow velocity seen by the moving body, following the global trend of the wavelength versus Reynolds number previously reported for fixed cylinders. In the wake region, the flow spanwise structure is essentially unaltered compared to the fixed body case, in spite of the major distortions of the streamwise and crossflow length scales.

DOI: [10.1103/PhysRevFluids.3.013902](https://doi.org/10.1103/PhysRevFluids.3.013902)

I. INTRODUCTION

The flow downstream of a fixed circular cylinder placed in a current has often been used as a paradigm of bluff body flows and it has been addressed in a number of studies, as reviewed by Roshko [1] and Williamson [2]. The wake patterns encountered in the plane normal to the cylinder axis have also been thoroughly studied in the case where the body oscillates in the current [3]. The present work focuses on the flow patterns emerging in the spanwise direction.

The flow past a fixed circular cylinder becomes unsteady with the alternate formation of large-scale, counterrotating, spanwise vortices at a Reynolds number Re close to 50, based on the cylinder diameter and oncoming flow velocity. In general, the unsteady flow downstream of a circular cylinder may be decomposed in two principal shear-flow regions [2]: the first region, close to the body, associated with separated shear layers forming on each side of the cylinder, and the second region, further in the wake, characterized by the large-scale spanwise vortices. In the following, these two regions are referred to as the shear layer region and the wake region, respectively. The transitions occurring in these two regions determine a variety of flow regimes.

^{*}Corresponding author: remi.bourguet@imft.fr

In the fixed cylinder case, the above-mentioned flow pattern remains two dimensional up to $Re \approx 200$. Then a three-dimensional undulation of the primary vortices develops in the wake region; as Re is increased, different regimes, characterized by distinct spanwise wavelengths, are encountered [4]. A wavelength of the order of one body diameter (i.e., the typical wavelength of a regime called mode B) persists over a wide range of Re , as reported by Mansy *et al.* [5] ($Re \in [300, 2200]$), Wu *et al.* [6,7] ($Re \in [200, 1800]$), Lin *et al.* [8] ($Re = 10\,000$), Chyu and Rockwell [9] ($Re = 10\,000$), and Hayakawa and Hussain [10] ($Re = 13\,000$). A transition occurs in the shear layer region at $Re \approx 1000$; it consists in the emergence of small-scale spanwise vortices comparable to those observed in plane mixing layers. These shear layer vortices and their formation frequency have been well documented [11–21]. The shear layer region also undergoes a three-dimensional transition, which includes a three-dimensional distortion of the shear layer vortices, as pointed out by Wei and Smith [13] and Rai [21], who visualized this phenomenon for $Re \in [2400, 4500]$ and $Re = 3900$, respectively. The streamwise evolution of the flow spanwise wavelength was measured experimentally by Mansy *et al.* [5] and Chyu and Rockwell [9]. Both studies reported a rapid increase of the wavelength as a function of the streamwise distance in the region of formation of the primary wake vortices. The small wavelength (about 0.5 body diameters) measured close to the body was identified as a typical length scale of the three-dimensional transition in the shear layer region.

Prior works concerning flows past circular cylinders often mentioned the similarities between the three-dimensional transition occurring in the wake region and that observed for plane mixing layers [2]. Mixing layers exhibit streamwise vortices stretched between primary spanwise vortices which are qualitatively comparable to those forming downstream of a cylinder [22–24]. Close connections are also expected with the shear layer region. The measurements of Bernal and Roshko [23], confirmed by Huang and Ho [25], indicate that the initial ratio (i.e., at the onset of streamwise vortices) between the spanwise and streamwise wavelengths in a mixing layer remains close to $2/3$, under various experimental conditions. Williamson *et al.* [26] suggested that a constant spanwise- versus streamwise-wavelength ratio may also exist in the wake region of a cylinder: A spanwise wavelength close to one body diameter is observed over a broad range of Re , where the streamwise wavelength related to the spanwise wake vortices remains close to constant. In the separated shear layers, both streamwise and spanwise wavelengths are expected to scale with the boundary-layer thickness at separation and should therefore vary as functions of the Reynolds number [26]. By applying the $2/3$ wavelength ratio to an estimated streamwise wavelength based on measurements of the shear layer frequency, Williamson *et al.* [26] and Wu *et al.* [7] suggested that the spanwise wavelength λ_z in the separated shear layers should vary as $\lambda_z/D \propto 1/\sqrt{Re}$, where D denotes the cylinder diameter. This trend is supported by the results of Mansy *et al.* [5]. The predicted decrease of the shear layer wavelength as a function of Re is consistent with the existence of distinct spanwise wavelengths in the shear layer and wake regions at high Reynolds numbers [5,9]. However, it is not clear whether λ_z remains constant along the detached shear layers downstream of the cylinder. Measurements of the spanwise wavelength during mixing layer development have indeed shown that λ_z exhibits significant variations as a function of the streamwise distance [25,27,28]; this aspect still needs to be examined in the case of a shear layer separating from a bluff body.

The flow structure may be dramatically modified when the cylinder oscillates in the current. Williamson and Roshko [3] described a variety of vortex shedding patterns, including multivortex and asymmetric patterns, in the plane perpendicular to the axis of a cylinder oscillating in the crossflow direction. Crossflow oscillation may decrease the three dimensionality of the flow. For example, it increases the critical Reynolds number associated with the three-dimensional transition [29]. In general, body oscillation enhances the synchronization of vortex formation along the span, thus increasing the spanwise correlation length of any quantity measured at the surface of the body [30].

Figure 1 represents a visualization of the three-dimensional flow downstream of a circular cylinder either fixed [Fig. 1(a)] or subjected to vortex-induced vibrations [Fig. 1(b)], at $Re = 3900$. In Fig. 1(b), the elastically mounted cylinder freely oscillates in both the in-line direction (i.e., the direction aligned with the current) and the crossflow direction; the in-line and crossflow oscillation amplitudes are

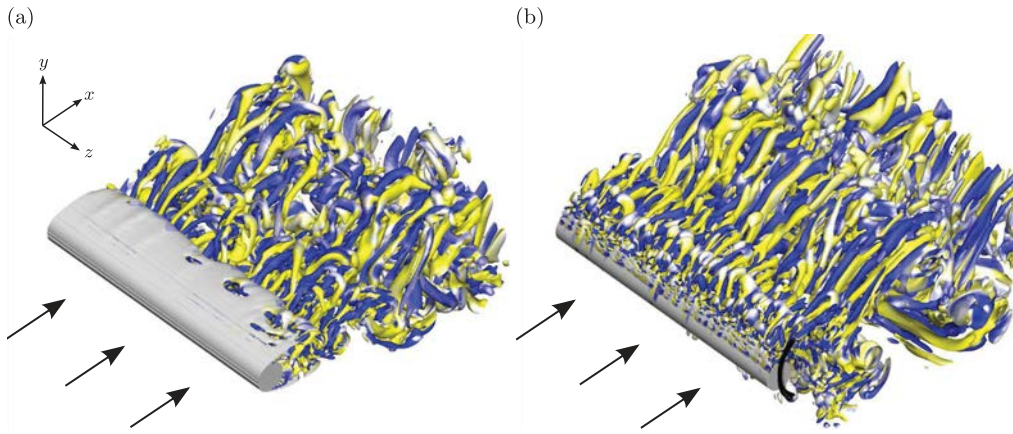


FIG. 1. Visualization of the three-dimensional flow downstream of a circular cylinder at $Re = 3900$: instantaneous isosurface of the Q criterion [31] ($Q = 0.1$) colored by isocontours of the streamwise vorticity nondimensionalized by the oncoming flow velocity and cylinder diameter ($\omega_x \in [-1, 1]$) in the (a) fixed and (b) freely oscillating ($U^* = 6$) body cases. Arrows indicate the direction of the oncoming flow. In (b) the crescent-shaped trajectory of the oscillating cylinder is represented by a line at the end of the body.

close to 0.3 and 1.2 body diameters. The trajectory of the body is indicated in the figure by a line at the end of the cylinder. This qualitative overview of the flow does not suggest any decrease of its three dimensionality in the oscillating body case. Significant differences are however visible, especially in the shear layer region. These differences are investigated in the present work.

In the present study, which is part of a Ph.D. work [32], the spanwise patterns emerging in the flow past a fixed or freely vibrating circular cylinder are analyzed, on the basis of numerical simulation results, at $Re = 3900$; this value of Re was often selected in prior works as a typical case of the early turbulent regime [33]. The spanwise patterns developing once the cylinder oscillates are investigated in conditions naturally arising for a bluff body free to move in the current, by considering cases of vortex-induced vibrations (VIVs). The principal flow-structure interaction aspects of the problem have been examined in a previous work [34] and comparable systems have been studied by Jauvtis and Williamson [35], Dahl *et al.* [36], Navrose and Mittal [37], and Cagney and Balabani [38]. Figure 2 shows the evolution of the body responses as a function of the reduced velocity U^* , defined as the inverse of the nondimensional natural frequency of the oscillator. The amplitudes and frequencies are nondimensionalized by the body diameter and current velocity. Large-amplitude oscillations [Figs. 2(a) and 2(b)] are reached over a well-defined range of reduced velocities, called the lock-in range, where the dominant frequency of wake unsteadiness and body oscillation frequency coincide [39–42]. Three response branches can be identified, the initial (IB), upper (UB), and lower (LB) branches, as indicated in the figure. The frequency ratio between the in-line and crossflow oscillations is equal to 2 over the lock-in range. The evolution of the crossflow oscillation frequency f_y , normalized by the wake frequency in the fixed body case (Strouhal frequency f_{St}), is plotted in Fig. 2(c). In the present work, the flow behavior is studied over the lock-in range for three values of the reduced velocity $U^* \in \{3, 6, 9\}$, i.e., one typical case in each branch. As shown in Fig. 2, these cases cover wide ranges of oscillation amplitudes and frequencies. The dominant features of the three-dimensional flow structures are explored in both the shear layer and wake regions. The spanwise patterns are characterized in terms of amplitudes and spatial wavelengths, with particular attention paid to their streamwise evolution within each region and to their possible alteration once the cylinder oscillates.

The methodology employed in this study is described in Sec. II. A qualitative overview of the flow is presented in Sec. III. The spanwise patterns are quantitatively examined in Sec. IV. Some elements of physical analysis are discussed in Sec. V. The principal findings of this work are summarized in Sec. VI.

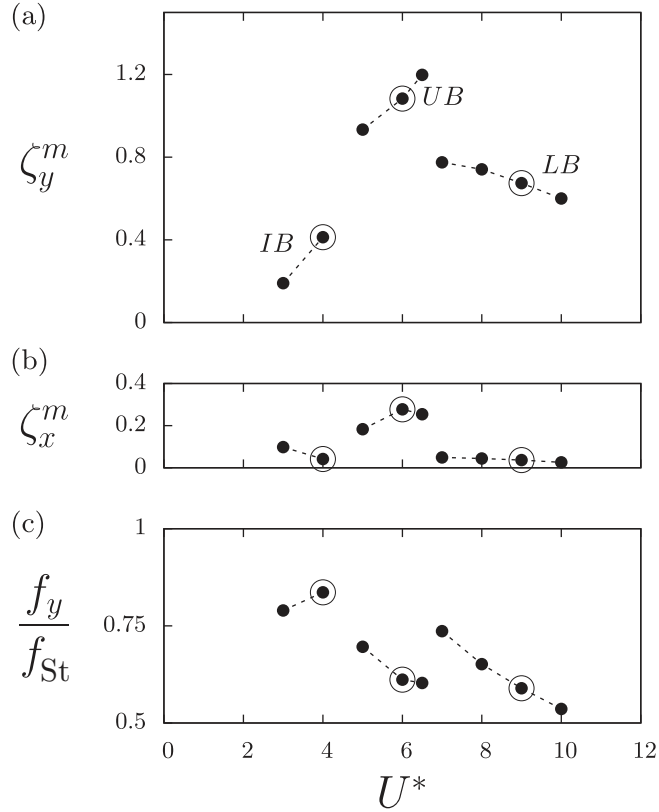


FIG. 2. Structural responses of an elastically mounted circular cylinder subjected to vortex-induced vibrations at $Re = 3900$: (a) in-line and (b) crossflow oscillation amplitudes (nondimensionalized by the cylinder diameter) and (c) crossflow oscillation frequency normalized by the Strouhal frequency (vortex shedding frequency in the fixed body case), as functions of the reduced velocity. Circles indicate the three typical cases examined in the present work, in addition to the fixed body case.

II. METHOD

The physical system and the numerical method are presented in Sec. II A. The data processing approach is described in Sec. II B.

A. Physical system and numerical method

The physical system is analogous to that described by Gsell *et al.* [34]. A sketch of the physical configuration is presented in Fig. 3. A circular cylinder of diameter D is immersed in a crossflow. The body axis (z axis) is located at $(x, y) = (0, 0)$ in quiescent fluid. The current is parallel to the x axis and characterized by its velocity U , density ρ_f , and dynamic viscosity μ . All the physical quantities are made nondimensional by D , U , and ρ_f . The Reynolds number based on U and D , $Re = \rho_f U D / \mu$, is set to 3900. The flow dynamics is governed by the three-dimensional incompressible Navier-Stokes equations. In the elastically mounted body case, the cylinder is free to oscillate in the in-line (x -axis) and crossflow (y -axis) directions. The oscillator is characterized by the body mass per unit length ρ_c and structural stiffnesses k_x and k_y and dampings c_x and c_y , in both directions. The cylinder nondimensional displacement, velocity, and acceleration in the in-line (crossflow) direction are denoted by ζ_x , $\dot{\zeta}_x$, and $\ddot{\zeta}_x$ (ζ_y , $\dot{\zeta}_y$, and $\ddot{\zeta}_y$), respectively. The body dynamics is governed by a forced second-order oscillator equation [34]. The structural damping is set to zero ($c_x = c_y = 0$) and the

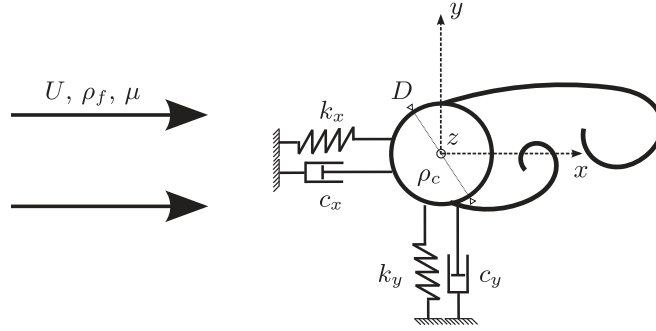


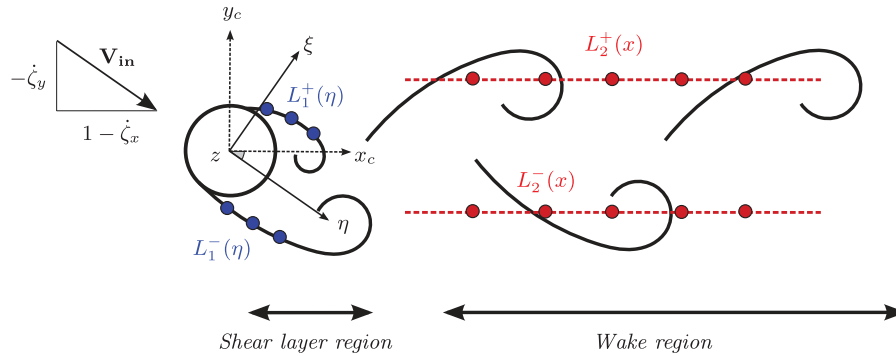
FIG. 3. Sketch of the physical configuration.

structural stiffnesses are the same in both directions ($k_x = k_y = k$). The nondimensional body mass is defined as $m = \rho_c / \rho_f D^2$; it is set to 2. The nondimensional natural frequency of the oscillator $f_{\text{nat}} = D / 2\pi U \sqrt{k / \rho_c}$ is used to define the reduced velocity $U^* = 1 / f_{\text{nat}}$. Three values, typical of each branch of VIV response, are considered here, $U^* \in \{3, 6, 9\}$.

The behavior of the coupled flow-structure system is predicted by direct numerical simulation of the three-dimensional Navier-Stokes equations. The computations are performed with the finite-volume code Numeca Fine/Open [43]. The term direct numerical simulation is used to indicate that no additional modeling is employed before numerical integration of the Navier-Stokes equations. It should however be mentioned that the spatial and temporal resolutions of the computations, as well as the numerical dissipation terms employed in the discretization schemes, limit the scales that can be simulated. Details of the numerical method, as well as convergence and validation results, have been reported in a previous paper [34]. Additional information concerning the computational domain and spatial and temporal discretizations is given in Appendix A. A comparison of the present results with prior works, in the fixed body case, is provided in Appendix B.

B. Data processing

The three dimensionality of the flow is analyzed along spanwise lines. Two types of lines are considered: L_1 , located in the separated shear layers, and L_2 , further in the wake. A schematic view of the locations of L_1 and L_2 is presented in Fig. 4. The frame attached to the cylinder axis, in translation with respect to the fixed (x, y, z) frame, is denoted by (x_c, y_c, z) . A tracking method is used to capture the instantaneous position of the shear layers. A similar method was employed by Rai [21] and is extended here to the case of oscillating bodies. The method involves a new frame


 FIG. 4. Schematic view of the spanwise lines L_1 and L_2 along which flow quantities are analyzed.

(η, ξ, z) . This frame is attached to the axis of the body and the η axis (ξ axis) is parallel (normal) to the instantaneous oncoming flow velocity \mathbf{V}_{in} , defined as $\mathbf{V}_{\text{in}} = [V_{\text{in},x}, V_{\text{in},y}, 0] = [1 - \dot{\zeta}_x, -\dot{\zeta}_y, 0]$ in the (x, y, z) frame. A separated shear layer is defined, in the near region, as an isosurface $V_\eta = 0.75|\mathbf{V}_{\text{in}}|$, where V_η is the η component of the flow velocity field. A line L_1 is defined as a line located at a given distance η from the cylinder, in the above-defined isosurface. Lines L_1 in the upper ($\xi > 0$) and lower ($\xi < 0$) shear layers are denoted by L_1^+ and L_1^- . Lines L_2 are fixed in the laboratory frame (x, y, z) . Their crossflow position is set to match the region of minimum (maximum) span- and time-averaged spanwise vorticity, i.e., the region crossed by clockwise (counterclockwise) wake vortices. Upper ($y > 0$) and lower ($y < 0$) lines are denoted by L_2^+ and L_2^- , respectively. When the positive and negative wake vortices are aligned, the crossflow position of L_2 is set to zero.

The flow quantities measured along lines L_1 and L_2 are averaged over selected time series. A phase average is used on lines L_1 . As shown in the following, this approach ensures that the data are collected on well-developed shear layers and thus a consistent comparison between the different oscillating body cases. The phase is based on the crossflow displacement of the body. The symmetry of the system is taken into account when computing the phase-averaged value: The shear layer at phase ϕ is expected to be symmetric with the opposite shear layer at phase $\phi + \pi$. The phase-averaged value of a quantity Ψ , at streamwise distance η and phase ϕ , is defined as

$$\langle \Psi \rangle_{p,L_1}(\eta, \phi) = \frac{1}{2}[\langle \Psi \rangle_{p,L_1^+}(\eta, \phi) + \langle \Psi \rangle_{p,L_1^-}(\eta, \phi + \pi)], \quad (1)$$

where $\langle \rangle_{p,L_1^+}$ and $\langle \rangle_{p,L_1^-}$ denote the phase-averaged values on lines L_1^+ and L_1^- , which are obtained over three oscillation cycles. For each cycle, five snapshots close to the selected phase are considered for averaging. In the fixed body case, the above phase average is replaced by a time average, denoted by $\langle \rangle_{t,L_1}$ and similar to that used on lines L_2 . On lines L_2 , in the wake region, time averaging is preferred to the above phase-averaging procedure for a more rigorous comparison with prior experimental results. However, it should be mentioned that the general trends identified in this region based on time-averaged flow quantities have been confirmed by employing the same phase-averaging procedure as in the shear layer region: The contrasted behaviors observed in the shear layer and wake regions do not depend on the nature (time or phase) of the averaging procedure. Due to the system symmetry, the time-averaging operator applied on lines L_2 involves both L_2^+ and L_2^- . The time-averaged value of a quantity Ψ , at streamwise distance x , is defined as

$$\langle \Psi \rangle_{t,L_2}(x) = \frac{1}{2}[\langle \Psi \rangle_{t,L_2^+}(x) + \langle \Psi \rangle_{t,L_2^-}(x)], \quad (2)$$

where $\langle \rangle_{t,L_2^+}$ and $\langle \rangle_{t,L_2^-}$ denote the time-averaged values on lines L_2^+ and L_2^- .

The distribution of the crossflow component of the vorticity, along lines L_1 and L_2 , is used to quantify the spanwise patterns of the flow. The crossflow component of the vorticity was selected as it provides a clear visualization of the three-dimensional flow structure, as shown in the following. It has been verified that the quantitative observations reported here, especially regarding the evolution of the spanwise wavelength of the flow, do not depend on the vorticity component considered in the analysis. In the shear layer region (lines L_1), the vorticity component aligned with the ξ axis of the mobile frame (ω_ξ) is considered, while the vorticity component aligned with the fixed y axis (ω_y) is considered in the wake region (lines L_2). It is recalled that in the fixed body case, $\eta = x$ and $\omega_\xi = \omega_y$.

The amplitudes of the spanwise fluctuations along lines L_1 and L_2 , denoted by A_{z1} and A_{z2} , are defined as

$$A_{z1}(x) = \langle \omega'_y \rangle_{t,L_1}(x) \quad (\text{fixed body}), \quad (3a)$$

$$A_{z1}(\eta, \phi) = \langle \omega'_\xi \rangle_{p,L_1}(\eta, \phi) \quad (\text{oscillating body}), \quad (3b)$$

$$A_{z2}(x) = \langle \omega'_y \rangle_{t,L_2}(x) \quad (\text{all cases}), \quad (3c)$$

where the prime designates the root-mean-square value in the spanwise direction. The Hilbert transform is used to compute the local spanwise wavelength of vorticity fluctuations. Considering a

vorticity signal $\omega(z)$, the analytic signal is defined as $\omega^a(z) = \omega(z) + i\mathcal{H}_\omega(z)$, where \mathcal{H}_ω is the Hilbert transform of ω . In exponential form, the analytic signal can be written $\omega^a(z) = \Omega(z)e^{i\varphi(z)}$, where Ω and φ are the local amplitude and local phase of ω . The local (z -dependent) spanwise wavelength is defined as $\lambda_z^l = 2\pi/(d\varphi/dz)$. The probability density function (PDF) of λ_z^l along the body length is denoted by $\mathcal{P}(\lambda_z^l)$. The PDF is used to determine the typical instantaneous wavelength $\lambda_z^i = \overline{\mathcal{P}(\lambda_z^l)}$, where the overline denotes the average of the 10% most frequent wavelengths in the PDF. The typical instantaneous wavelengths of ω_x and ω_y are computed on lines L_1 and L_2 , respectively. The averaged spanwise wavelengths in the shear layer and wake regions, denoted by λ_{z1} and λ_{z2} , are then defined as

$$\lambda_{z1}(x) = \langle \lambda_z^i \rangle_{t,L_1}(x) \quad (\text{fixed body}), \quad (4a)$$

$$\lambda_{z1}(\eta, \phi) = \langle \lambda_z^i \rangle_{p,L_1}(\eta, \phi) \quad (\text{oscillating body}), \quad (4b)$$

$$\lambda_{z2}(x) = \langle \lambda_z^i \rangle_{t,L_2}^*(x) \quad (\text{all cases}). \quad (4c)$$

In (4c), a selective time averaging (denoted by the asterisk superscript) is performed, by only considering the samples where a clear dominant wavelength appears in the PDF, i.e., where the cumulative probability of the 10% most frequent wavelengths is larger than a given value, set to 0.45 in the following. The time variability of the spanwise wavelength about its averaged value is quantified, in each region, by the standard deviations

$$\tilde{\lambda}_{z1}(x) = \sqrt{\langle (\lambda_z^i - \lambda_{z1})^2 \rangle_{t,L_1}(x)} \quad (\text{fixed body}), \quad (5a)$$

$$\tilde{\lambda}_{z1}(\eta, \phi) = \sqrt{\langle (\lambda_z^i - \lambda_{z1})^2 \rangle_{p,L_1}(\eta, \phi)} \quad (\text{oscillating body}), \quad (5b)$$

$$\tilde{\lambda}_{z2}(x) = \sqrt{\langle (\lambda_z^i - \lambda_{z2})^2 \rangle_{t,L_2}^*(x)} \quad (\text{all cases}). \quad (5c)$$

III. OVERVIEW OF THE FLOW

The flow patterns observed in the (x, y) plane are depicted in Fig. 5, which represents instantaneous isocontours of the span-averaged spanwise vorticity (ω_z) in the fixed and oscillating body cases. The spanwise lines L_2^+ (defined in Sec. II B), used in the following to analyze the spanwise patterns in the wake region, are indicated by red dots in the plots. In the fixed body case [Fig. 5(a)], the wake exhibits a typical von Kármán vortex street pattern. The formation of the large-scale spanwise vortices occurs close to $x = 2$, as also reported in prior works [44]. Upstream, well-defined shear layers, separating from the body, can be noted. The (x, y) flow pattern is modified when the body oscillates [Figs. 5(b)–5(d)], as previously discussed by Gsell *et al.* [34], on the basis of span- and phase-averaged visualizations. Following the terminology of Williamson and Roshko [3], a $2S$ pattern is identified for $U^* = 3$ and $U^* = 6$, while a $2P$ pattern is noted for $U^* = 9$. Significant variations of the length scales of the flow pattern are also observed. For example, the typical streamwise distance between the spanwise vortical structures for $U^* = 9$ is roughly twice as large as in the fixed body case. The crossflow width of the wake also varies from one case to the other. The alteration of the flow length scales in the (x, y) plane is further discussed in Sec. V. Vortex formation tends to occur closer to the body when it vibrates, which corroborates prior visualizations of flows past oscillating cylinders [45].

The three dimensionality of the flow can be illustrated by the magnitude of the streamwise (ω_x) and/or crossflow (ω_y) vorticity components. The projection of the vorticity vector on the (x, y) plane is referred to as planar vorticity and is denoted by ω_p . The patterns of ω_p in the (x, y) plane are examined in Fig. 6, which shows instantaneous isocontours of the span-averaged, planar vorticity magnitude $|\omega_p| = \sqrt{\omega_x^2 + \omega_y^2}$ in the four cases studied. In the fixed body case [Fig. 6(a)], the planar vorticity is concentrated close to the large-scale spanwise vortices [Fig. 5(a)], but also in the regions connecting these vortices; the high level of planar vorticity in these regions is consistent with the mechanism of vorticity stretching between wake vortices, described in prior works [4,6]. The behavior of the planar

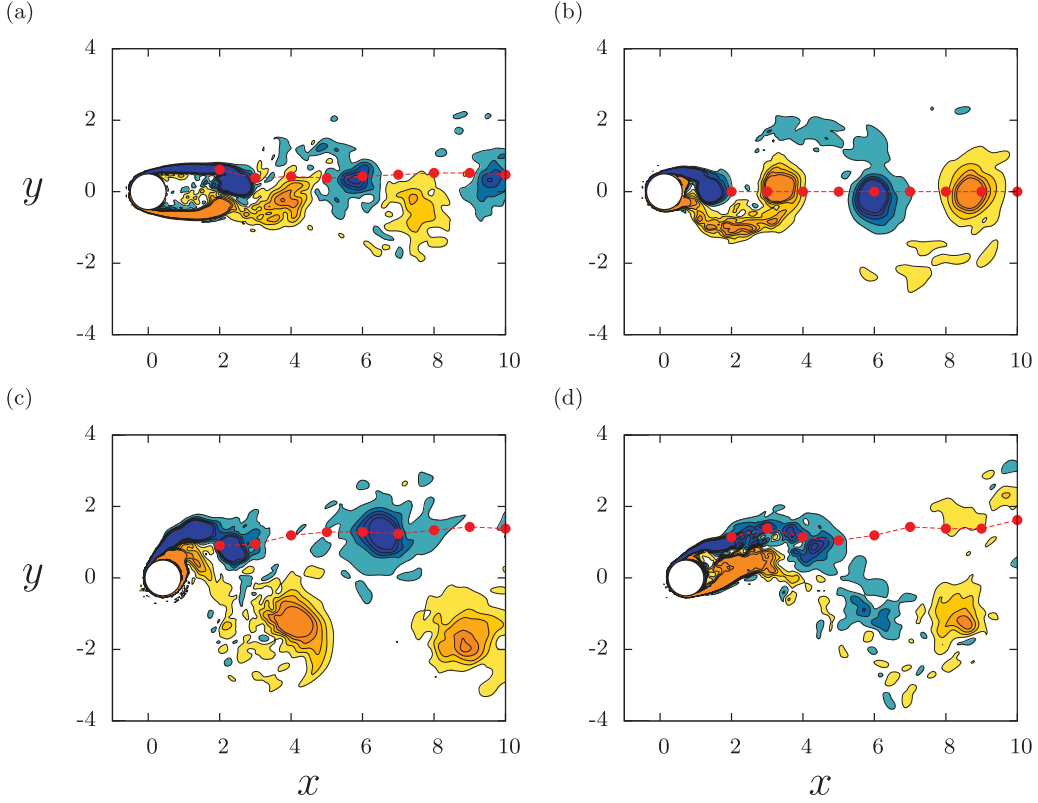


FIG. 5. Flow patterns in the (x, y) plane: instantaneous isocontours of the span-averaged, spanwise vorticity ($\omega_z \in [-2, 2]$) in the (a) fixed and (b)–(d) oscillating body cases, for (b) $U^* = 3$, (c) $U^* = 6$, and (d) $U^* = 9$. In each case, red dots indicate the positions of lines L_2^+ (defined in Sec. IIB). In (b)–(d), $\zeta_y = 0$ and the body is moving downward.

vorticity is globally analogous when the body oscillates [Figs. 6(b)–6(d)]. In all cases studied, the region of maximum planar vorticity is located close to the body. However, it appears that the planar vorticity magnitude in the region of the detached shear layers is substantially lower in the fixed body case than in the oscillating body cases.

The flow patterns emerging in the third (z) direction are examined in the following. A global visualization of the three-dimensional flow is presented in Fig. 7. In the four cases studied, an instantaneous isosurface of the Q criterion [31] is colored by isocontours of the crossflow vorticity (ω_y). The Q criterion highlights a number of small elongated vortices, mainly aligned in the (x, y) plane. Their locations coincide with the regions of large planar vorticity magnitude depicted in Fig. 6. These vortices have often been described as streamwise vortices in prior studies. However, due to their alignment in the (x, y) plane and their oblique orientation in this plane, the term planar vortices is preferred in the following to designate these flow structures. The planar vortices are observed in both the fixed and oscillating body cases. While body motion is generally expected to decrease the three dimensionality of the flow, the density of planar vortices in the wake region and their magnitude do not significantly vary from one case to the other. In this region, the planar vortices tend to be more regularly aligned in the (x, y) plane when the body oscillates. This suggests that body motion may be associated with a homogenization of the three-dimensional patterns. The planar vortices are generally observed over the entire body length. They define a typical spanwise length scale of the flow structure. Localized regions without planar vortices may however be encountered [$U^* = 9$, Fig. 7(d)], suggesting some possible amplitude modulations of the three-dimensional patterns.

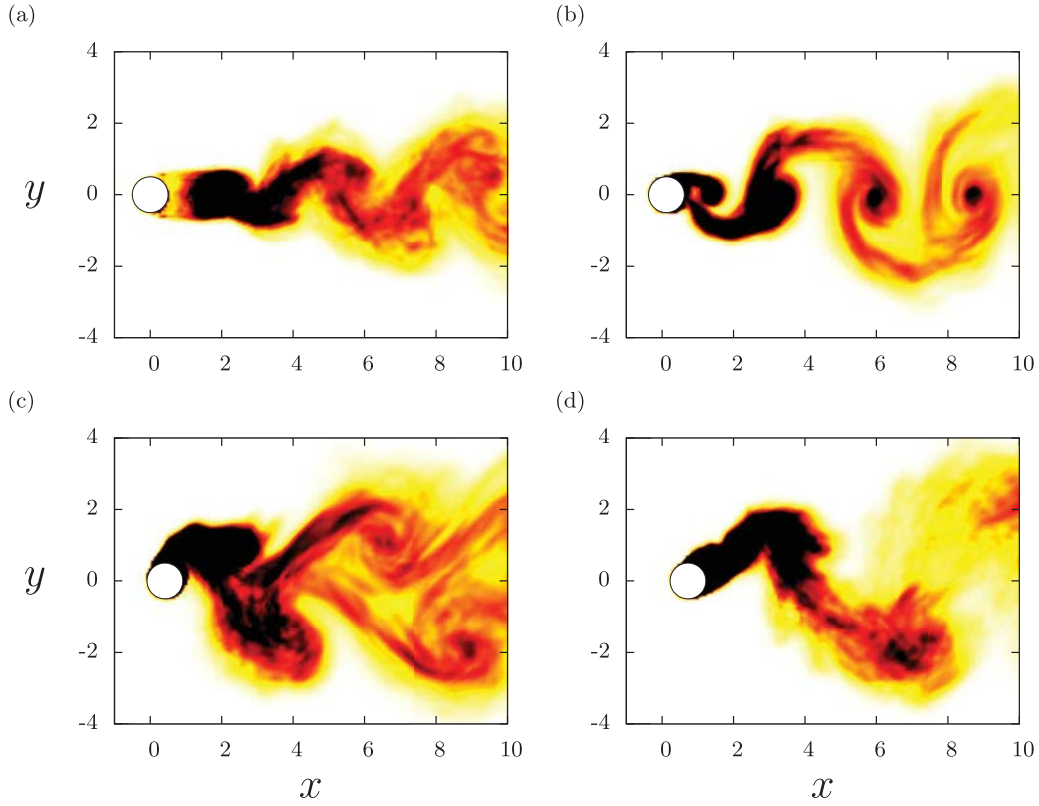


FIG. 6. Flow patterns in the (x, y) plane: instantaneous isocontours of the span-averaged, planar vorticity magnitude ($|\omega_p| \in [0, 2]$) in the (a) fixed and (b)–(d) oscillating body cases, for (b) $U^* = 3$, (c) $U^* = 6$, and (d) $U^* = 9$. In (b)–(d), $\zeta_y = 0$ and the body is moving downward.

A closer view of the three-dimensional flow in the shear layer region is presented in Fig. 8. A higher value of the Q criterion is used in comparison with Fig. 7 to highlight the dominant flow features encountered close to the body. In order to connect the three-dimensional patterns with the flow in the (x, y) plane, slices of the domain at $z = 0$, colored by isocontours of the spanwise vorticity, are also shown in each case. In the fixed body case [Fig. 8(a)], elongated planar vortices appear in the region of formation of the large-scale spanwise vortices. Upstream, in the shear layer region, no vortices are noted. More planar vortices seem to develop in the oscillating body cases (the Q -criterion level is kept constant in all cases). For $U^* = 3$ [Fig. 8(b)], planar vortices can be identified between the cylinder and the forming spanwise vortex. The enhancement of planar vortex formation in the shear layer region, when the body vibrates, is confirmed by the visualizations reported for $U^* = 6$ and $U^* = 9$ [Figs. 8(c) and 8(d)]. Such enhancement is consistent with the increased planar vorticity magnitude noted close to the cylinder when it oscillates (Fig. 6).

In the near region, particular attention is paid to the three-dimensional structure of the shear layers separating from the cylinder; the tracking method employed to capture the shear layers is described in Sec. II B. An example of shear layer tracking is presented in Fig. 9, for $U^* = 6$, i.e., in the case of maximum oscillation amplitudes. In Figs. 9(a), 9(c), and 9(e), the evolution of the shear layers as the body oscillates is visualized by plotting isocontours of the span-averaged spanwise vorticity at three instants of an oscillation cycle. Large deformations of the shear layers can be noted in the (x, y) plane. In this example, where the body is moving downward, a well-defined upper shear layer (blue) can be identified. In contrast, the lower shear layer (orange) is very short and does not clearly separate from the body. The span-averaged location of the surface captured by

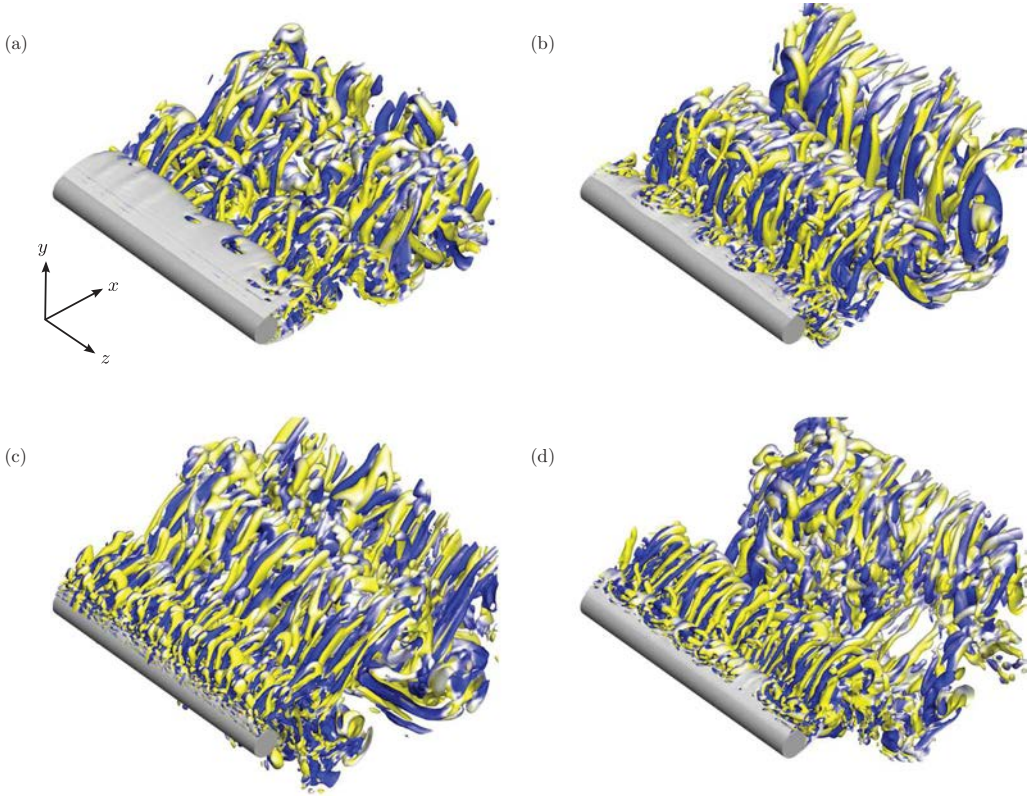


FIG. 7. Global visualization of the three-dimensional flow: instantaneous isosurface of the Q criterion ($Q = 0.1$) colored by isocontours of the crossflow vorticity ($\omega_y \in [-1, 1]$) in the (a) fixed and (b)–(d) oscillating body cases, for (b) $U^* = 3$, (c) $U^* = 6$, and (d) $U^* = 9$. In (b)–(d), $\zeta_y = 0$ and the body is moving downward.

the tracking method is indicated by red dots in Figs. 9(a), 9(c), and 9(e); it matches the location of the shear layer visualized via spanwise vorticity isocontours. The corresponding three-dimensional surface, colored by isocontours of surface elevation (along the ξ axis), is shown at each instant in Figs. 9(b), 9(d), and 9(f). In Fig. 9(b), a short shear layer detaches from the body. As the body moves downward [Figs. 9(d) and 9(f)], the shear layer develops: Its length increases and a spanwise wake vortex forms. This development is accompanied by a pronounced three-dimensional deformation of the shear layer.

A visualization of the three-dimensional shear layer separating from the upper side of the body (captured by the above-mentioned method) is presented in Fig. 10, in the four cases studied. In the oscillating body cases, the snapshots are shown for $\zeta_y = 0$ and the body moving downward, i.e., the phase at which a well-developed shear layer has been observed for $U^* = 6$ (Fig. 9). In the fixed body case, the crossflow vorticity, which is used to color the shear layer surface, exhibits spanwise patterns similar to those reported by Rai [21], at the same Reynolds number. A deformation of the shear layer, which coincides with the patterns of vorticity, can also be noted along the entire span. Similar features are observed when the cylinder moves; however, the amplitudes of crossflow vorticity (ξ -axis component) fluctuations and shear layer deformations tend to increase in the oscillating body cases. The spanwise wavelength that emerges in the shear layer seems to be altered when the body oscillates and to vary from one moving body case to the other. These aspects will be examined quantitatively in Sec. IV.

In order to shed light on the dominant spanwise patterns, flow quantities are collected along spanwise lines placed downstream of the body. Two types of lines are considered, as described

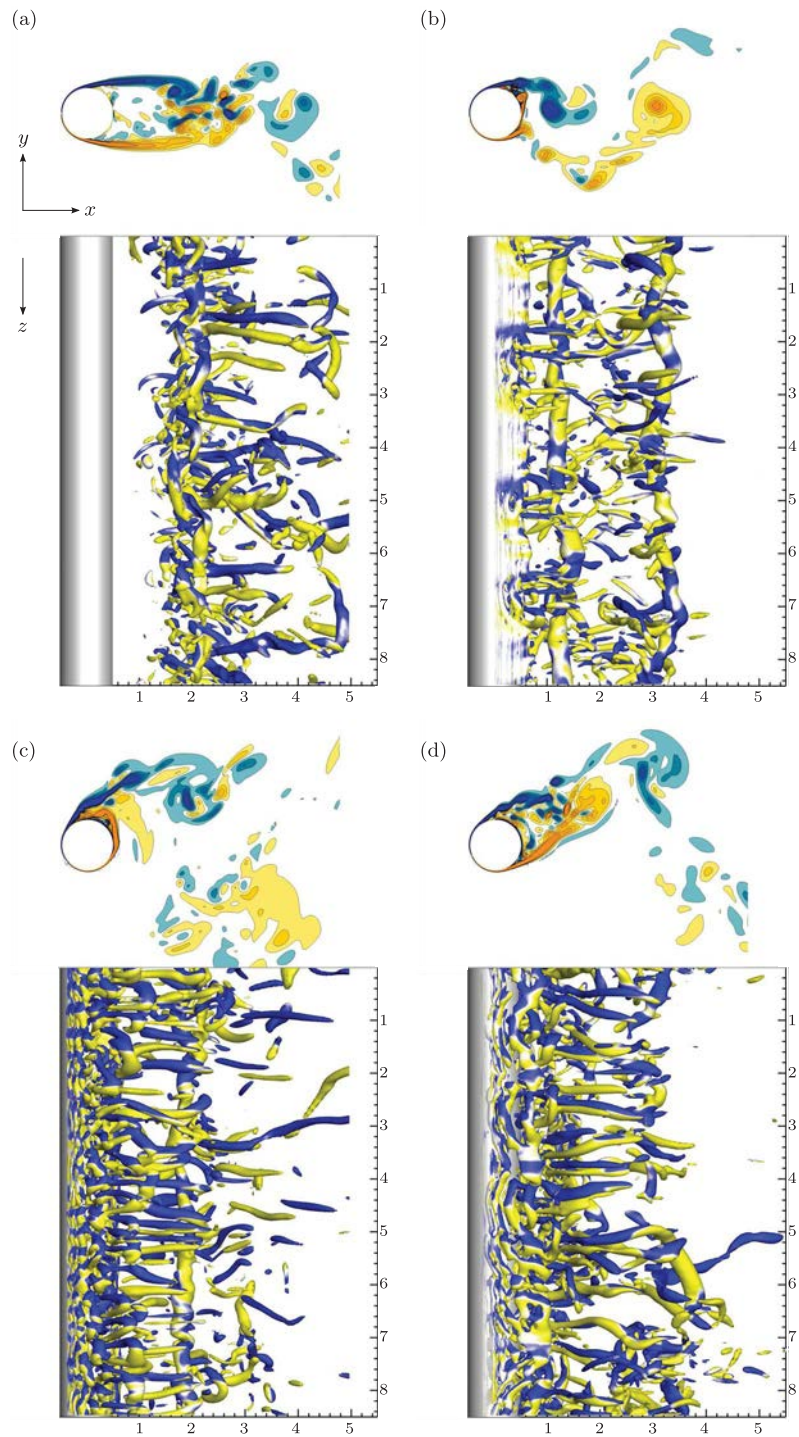


FIG. 8. Visualization of the three-dimensional flow close to the body: instantaneous isocontours of the spanwise vorticity ($\omega_z \in [-10, 10]$) in the plane $z = 0$ and isosurface of the Q criterion ($Q = 10$) colored by isocontours of the crossflow vorticity ($\omega_y \in [-1, 1]$) in the (a) fixed and (b)–(d) oscillating body cases, for (b) $U^* = 3$, (c) $U^* = 6$, and (d) $U^* = 9$.

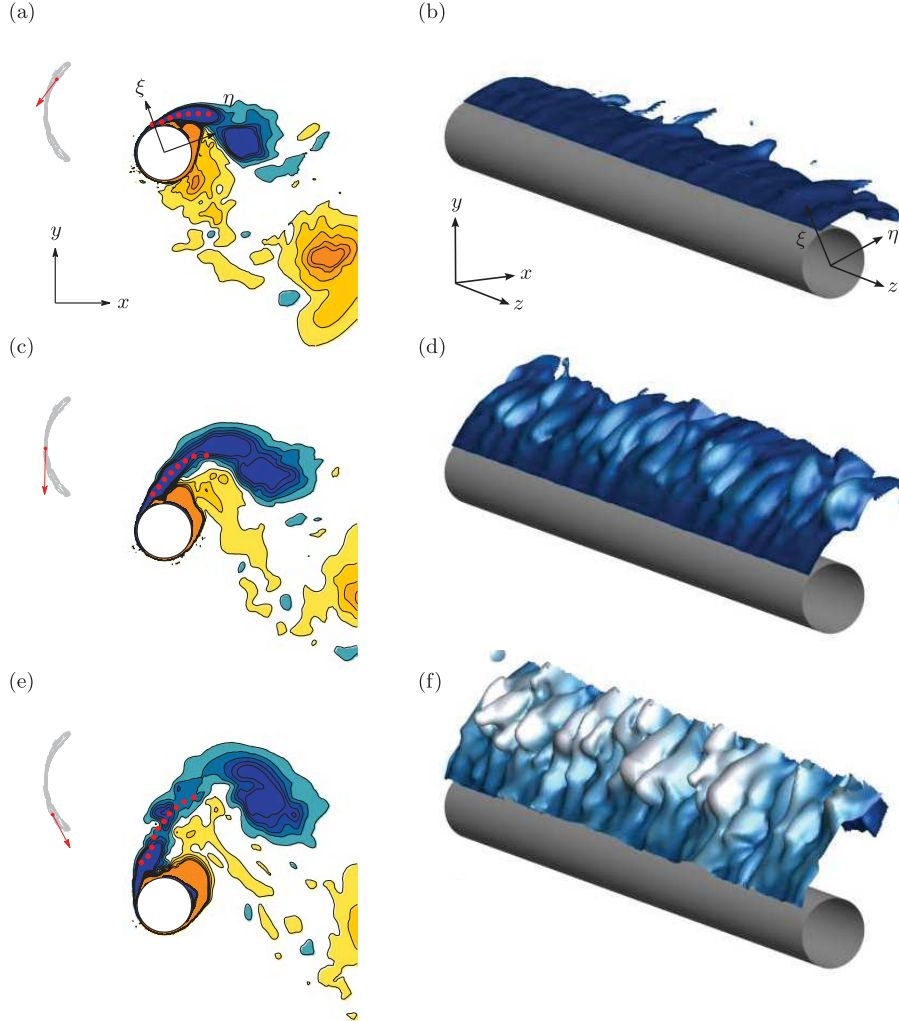


FIG. 9. Visualization of the shear layers separating from the body, for $U^* = 6$: (a), (c), and (e) isocontours of the span-averaged, spanwise vorticity ($\omega_z \in [-2, 2]$) and (b), (d), and (f) three-dimensional upper shear layer colored by isocontours of surface elevation ($\xi \in [0.6, 1.2]$), at three instants during an oscillation cycle. In (a), (c), and (e), the trajectory, position, and velocity of the body are shown and red dots indicate the span-averaged location of the surface captured by the shear layer tracking method (described in Sec. II B).

in Sec. II B: lines L_1 , located in the shear layers [moving frame (η, ξ, z)], and lines L_2 , placed further in the wake, in zones crossed by the large-scale spanwise vortices [laboratory frame (x, y, z)]. Selected time series of the crossflow vorticity along lines $L_1^+(\eta = 1)$ and $L_2^+(x = 5)$ are shown in Fig. 11, for the four cases studied. As mentioned in Sec. II B, the term crossflow vorticity is used to designate the vorticity component aligned with the ξ axis of the mobile frame in the shear layer region (lines L_1) and the component aligned with the fixed y axis in the wake region (lines L_2). The crossflow vorticity in the shear layer separating from the fixed body is depicted in Fig. 11(a). The selected time series last approximately four vortex shedding periods. At any instant, the vorticity exhibits spanwise fluctuations over the entire body, with a relatively-well-defined wavelength. The spatiotemporal structure of the flow is essentially perpendicular to the body axis, as expected from the spatial distribution of the crossflow vorticity in Fig. 10(a). Distinct patterns, characterized by rapid

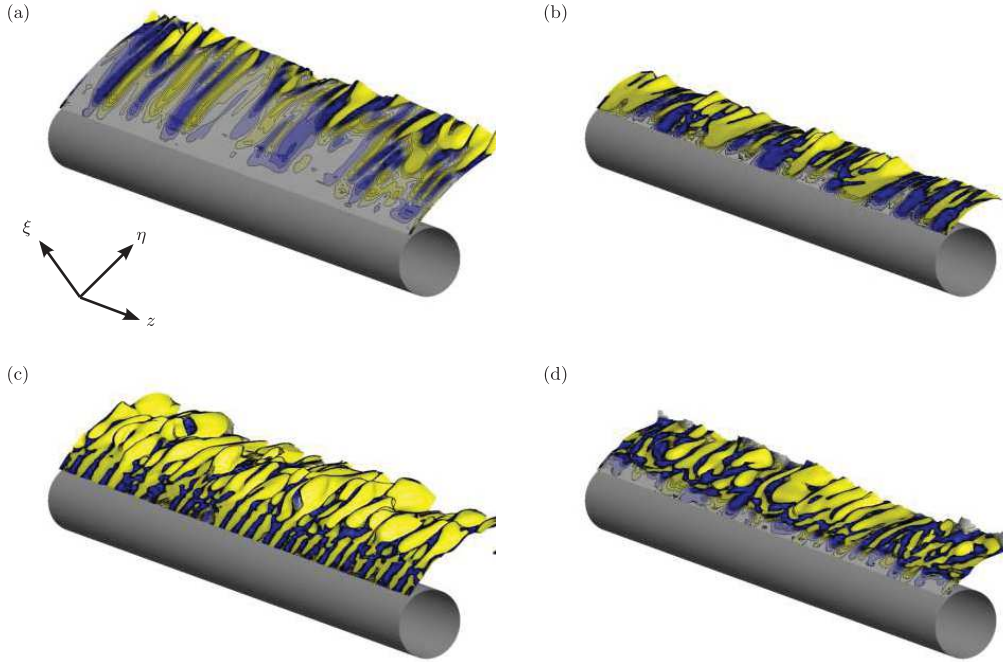


FIG. 10. Three-dimensional shear layer separating from the body: upper shear layer colored by instantaneous isocontours of the crossflow vorticity ($\omega_\xi \in [-1, 1]$) in the (a) fixed and (b)–(d) oscillating body cases, for (b) $U^* = 3$, (c) $U^* = 6$, and (d) $U^* = 9$. In the oscillating body cases, $\zeta_y = 0$ and the body is moving downward.

temporal fluctuations of the vorticity in localized regions of the span, are also noted in Fig. 11(a); an instance of this phenomenon is indicated by a black rectangle in the figure. These localized events, also reported by Rai [21], relate to the presence of shear layer vortices, called transition waves by Bloor [11]. A brief spectral analysis of the vorticity fluctuations associated with the shear layer vortices is presented in Appendix C.

The behavior of the crossflow vorticity in the shear layer, when the body oscillates, is depicted in Figs. 11(c), 11(e), and 11(g), for $U^* \in \{3, 6, 9\}$. Since the shear layer may be substantially deformed or shortened once the body moves, an additional criterion is employed to confirm that lines L_1 are located in high-vorticity regions: Some samples are discarded, based on the magnitude of the spanwise vorticity ω_z , averaged along the considered spanwise line; below a given level, the line is not representative of a shear layer. Discarded samples are indicated by striped areas in Figs. 11(c) and 11(e). Large spanwise fluctuations of ω_ξ can be noted in the three oscillating body cases. As in the fixed body case, a typical spanwise length scale (apparently lower than in the fixed body case) emerges and the dominant spatiotemporal structure of the flow is mainly perpendicular to the body axis. It should be mentioned that the range of vorticity values considered in the oscillating body cases is substantially wider than in the fixed body case ($\omega_\xi \in [-10, 10]$ versus $\omega_\xi \in [-2, 2]$), which confirms the amplification of the spanwise fluctuations observed in Fig. 10. Some shear layer vortices, comparable to those observed in the fixed body case, are also noted for $U^* = 9$, although less clearly defined. Such vortices cannot be identified for $U^* = 3$ and $U^* = 6$, which may be due to the short lifetime of the detached shear layers.

The time series of the crossflow vorticity in the wake region [line $L_2^+(x = 5)$] are presented in Figs. 11(b), 11(d), 11(f), and 11(h). It is recalled that the crossflow position of L_2^+ varies from one case to the other (Fig. 5). In each case, ω_y exhibits spanwise fluctuations, with a typical spatial wavelength which seems larger than that observed in the shear layer region. The spanwise fluctuations are coupled with a time-periodic amplitude modulation, at the spanwise vortex shedding frequency.

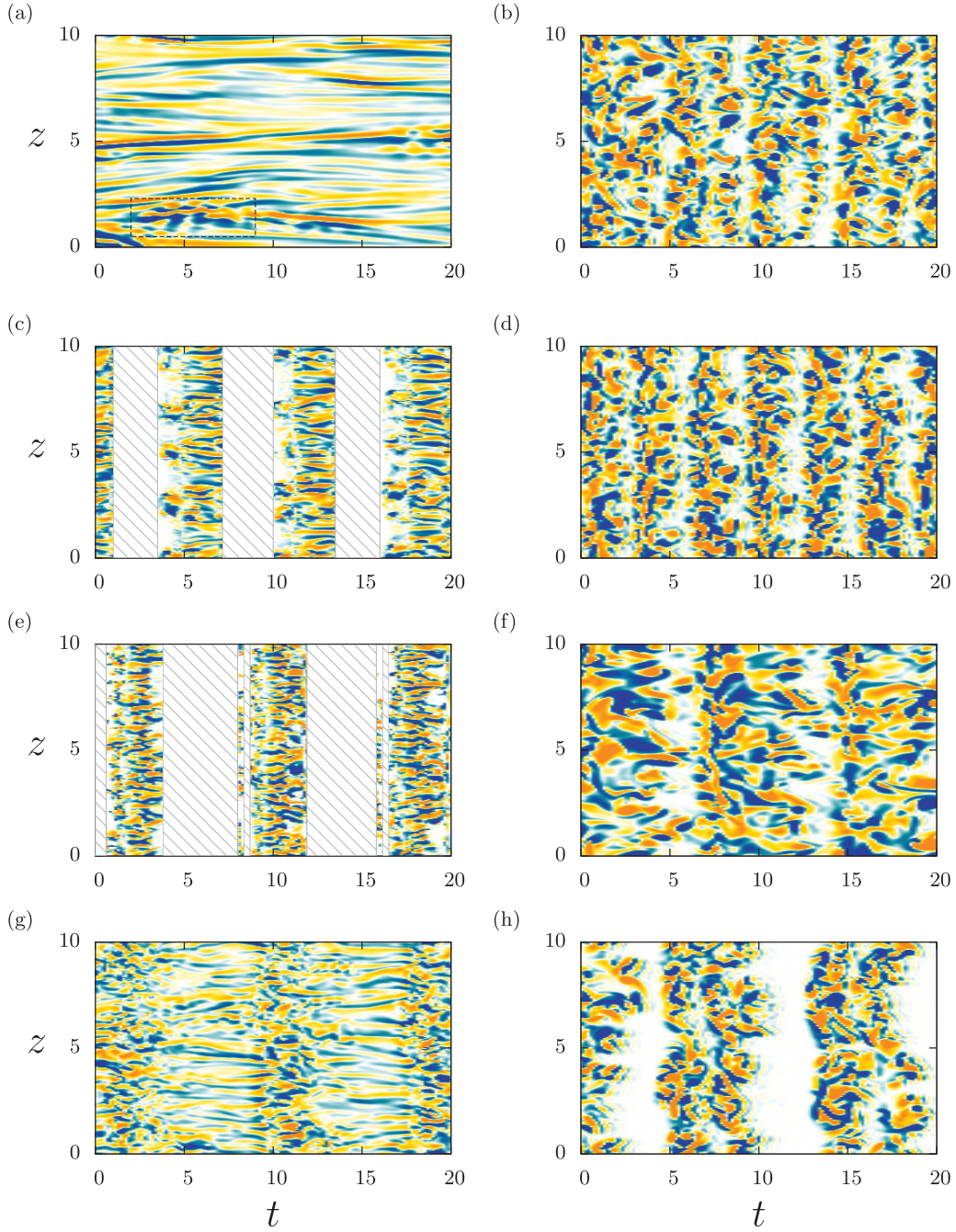


FIG. 11. Time series of the spanwise patterns in the shear layer and wake regions: (a), (c), (e), and (g) ω_ξ on line $L_1^+(\eta = 1)$ and (b), (d), (f), and (h) ω_y on line $L_2^+(x = 5)$, in the (a) and (b) fixed and (c)–(h) oscillating body cases, for (c) and (d) $U^* = 3$, (e) and (f) $U^* = 6$, and (g) and (h) $U^* = 9$. The isocontours are distributed in ranges (a) $\omega_\xi \in [-2, 2]$, (c), (e), and (g) $\omega_\xi \in [-10, 10]$, and (b), (d), (f), and (h) $\omega_y \in [-2, 2]$. In (a), a black rectangle indicates an instance of shear layer vortices. In (c) and (e), striped areas denote discarded samples (low-vorticity level).

This modulation is expected due to the inhomogeneous distribution of flow three dimensionality in the (x, y) plane: As previously shown in Fig. 6, it concentrates in the spanwise vortices and in regions connecting the spanwise vortices. Contrary to what was observed in the shear layers, the magnitudes and wavelengths of vorticity fluctuations in the wake region are globally comparable in the fixed and oscillating body cases.

To summarize, these qualitative observations of the flow emphasize its three dimensionality which is characterized, in both fixed and oscillating body cases, by pronounced fluctuations distributed along the span. Two dominant features have been highlighted: the spanwise undulations of the shear layers separating from the body and the development of elongated planar vortices. This first overview suggests that flow three dimensionality could be altered differently in the shear layer and wake regions, once the body oscillates. In order to provide a more quantitative vision of the three-dimensional structure of the flow and confirm the above observations, a systematic analysis of the flow spanwise fluctuations is presented in the next section.

IV. QUANTITATIVE ANALYSIS OF THE SPANWISE PATTERNS

The spanwise patterns observed qualitatively in Sec. III are quantified through the amplitudes A_{z1} and A_{z2} (Sec. IV A) and wavelengths λ_{z1} and λ_{z2} (Sec. IV B) of the spanwise fluctuations of the crossflow vorticity component. These quantities and associated averaging procedures are defined in Sec. IIB. In the shear layer region, the time series of vorticity collected along lines L_1 are discontinuous in some cases (Fig. 11). In the oscillating body cases, a phase-averaging procedure is employed in this region. In this section, the analysis is performed for $\{\zeta_y = 0, \zeta_y < 0\}$; this phase is selected for comparison since a well-developed shear layer is observed at this point of the oscillation cycle in all cases studied (Fig. 10). The influence of the selected phase on the results will be discussed in Sec. V. In the fixed body case, the phase averaging is replaced by a time averaging. For all cases, in the wake region (lines L_2), time-averaged data are examined.

A. Amplitude of spanwise fluctuations

The streamwise evolution of A_{z1} and A_{z2} is presented in Fig. 12. In the fixed body case, a continuous increase of the spanwise fluctuation amplitude, as a function of the streamwise distance, is

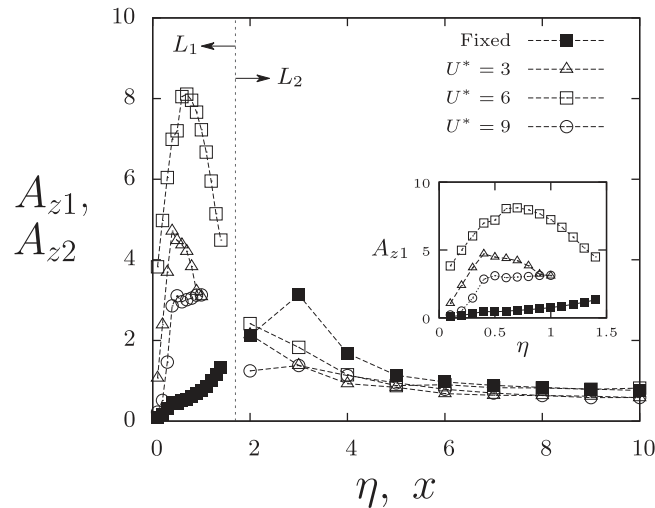


FIG. 12. Streamwise evolution of the spanwise fluctuation amplitude, in the fixed and oscillating body cases. In the oscillating body cases, the amplitudes A_{z1} are determined for $\{\zeta_y = 0, \zeta_y < 0\}$ (Sec. IIB).

observed in the shear layer region. The amplitude keeps increasing at the beginning of the wake region and a maximum value is reached close to $x = 3$, i.e., near the region of formation of the spanwise wake vortices. This corroborates the qualitative observations based on Fig. 6(a). The evolution of A_{z1} and A_{z2} in the oscillating body cases is also plotted in Fig. 12. For $U^* = 3$ and $U^* = 9$, the range of η is limited to $\eta \in [0, 1]$ since the shear layer does not extend further downstream. When the cylinder oscillates, the amplitude of the spanwise fluctuations is dramatically altered in the shear layer region; it is generally larger in this case, as expected from the visualizations reported in Figs. 8 and 10. For example, the peak amplitude in this region for $U^* = 6$ is roughly 6 times larger than in the fixed body case. The streamwise trend of A_{z1} is comparable in the three oscillating body cases: a steep increase in the very near region (close to the area of spanwise vortex formation), followed by a much lower increase or a decrease. Some slight differences can be noted in the wake region for $x \in [2, 4]$. Further downstream ($x > 4$), the relatively constant amplitudes are close in all cases studied, including in the fixed body case. The global upstream shift of the peak amplitude in the oscillating body cases, compared to the fixed body case, may be connected to the upstream shift of the spanwise vortex formation region, previously observed in Fig. 5. The evolution of A_{z1} and A_{z2} suggests that the alteration of the spanwise fluctuations, associated with body motion, is essentially localized close to the cylinder, in the shear layer region.

B. Wavelength of spanwise fluctuations

The local wavelength of the spanwise pattern (λ_z^l) is determined via the Hilbert transform, as described in Sec. II B. At each instant, the PDFs of λ_z^l are computed along lines L_1 and L_2 . In order to illustrate the postprocessing applied to the simulation data, the time series of the PDFs obtained along $L_1^+(\eta = 1)$ and $L_2^+(x = 5)$ are plotted in Fig. 13, in the four cases studied. In the shear layer region [Figs. 13(a), 13(c), 13(e), and 13(g)], the PDFs are sharp and a dominant wavelength, referred to as typical instantaneous wavelength λ_z^i (defined in Sec. II B) clearly emerges; in each case, this dominant wavelength is close to constant as a function of time. In the wake region [Figs. 13(b), 13(d), 13(f), and 13(h)] the PDFs present broader distributions and a criterion, described in Sec. II B, is employed to select the time instants at which a dominant wavelength can be identified. These time instants are indicated by gray dots in the plots. In each case, the typical instantaneous wavelength exhibits more time variability than in the shear layer region, but its deviation from the time-averaged value is still limited.

The evolution of the averaged spanwise wavelength, λ_{z1} in the shear layer region and λ_{z2} in the wake region, as a function of the streamwise distance, in the fixed body case, is depicted in Fig. 14. The wavelength exhibits a continuous streamwise evolution. Distinct trends can be observed in the shear layer and wake regions: The wavelength decreases as a function of the streamwise distance in the shear layer region, while it tends to increase with x further downstream. A minimum wavelength close to 0.5 diameters is noted around $x = 2$. The time variability of the wavelength is quantified by its standard deviation [$\tilde{\lambda}_{z1}$ and $\tilde{\lambda}_{z2}$, defined by (5)]; the values of $\lambda_{z1} \pm \tilde{\lambda}_{z1}$ and $\lambda_{z2} \pm \tilde{\lambda}_{z2}$ are indicated by error bars in the figure. The time variability of the wavelength remains small compared to its streamwise variation.

The experimental results of Mansy *et al.* [5] and Chyu and Rockwell [9] are also plotted in Fig. 14. The data of Mansy *et al.* [5] are presented for two crossflow positions; the wavelengths reported by Chyu and Rockwell [9] are averaged in the crossflow direction. The wavelength jump observed by Chyu and Rockwell [9] at $x \approx 1$ is similar to that reported by Mansy *et al.* [5] at $x \approx 2$ and $y = 1$. This jump occurs close to the region of formation of the spanwise wake vortices. The difference of Re between these studies (Re = 600 versus Re = 10^4) leads to distinct vortex formation lengths [44], which can explain the shift observed in the streamwise location of the wavelength jump. The data of Mansy *et al.* [5] show a different trend at $y = 0.5$, where no jump appears in the range of streamwise distances investigated, as in the present results. This highlights the substantial impact of the crossflow location of the sampling point on the measured wavelength close to the body. In the present work, the wavelength is determined in the shear layers. In the fixed body case, the upper shear layer is located

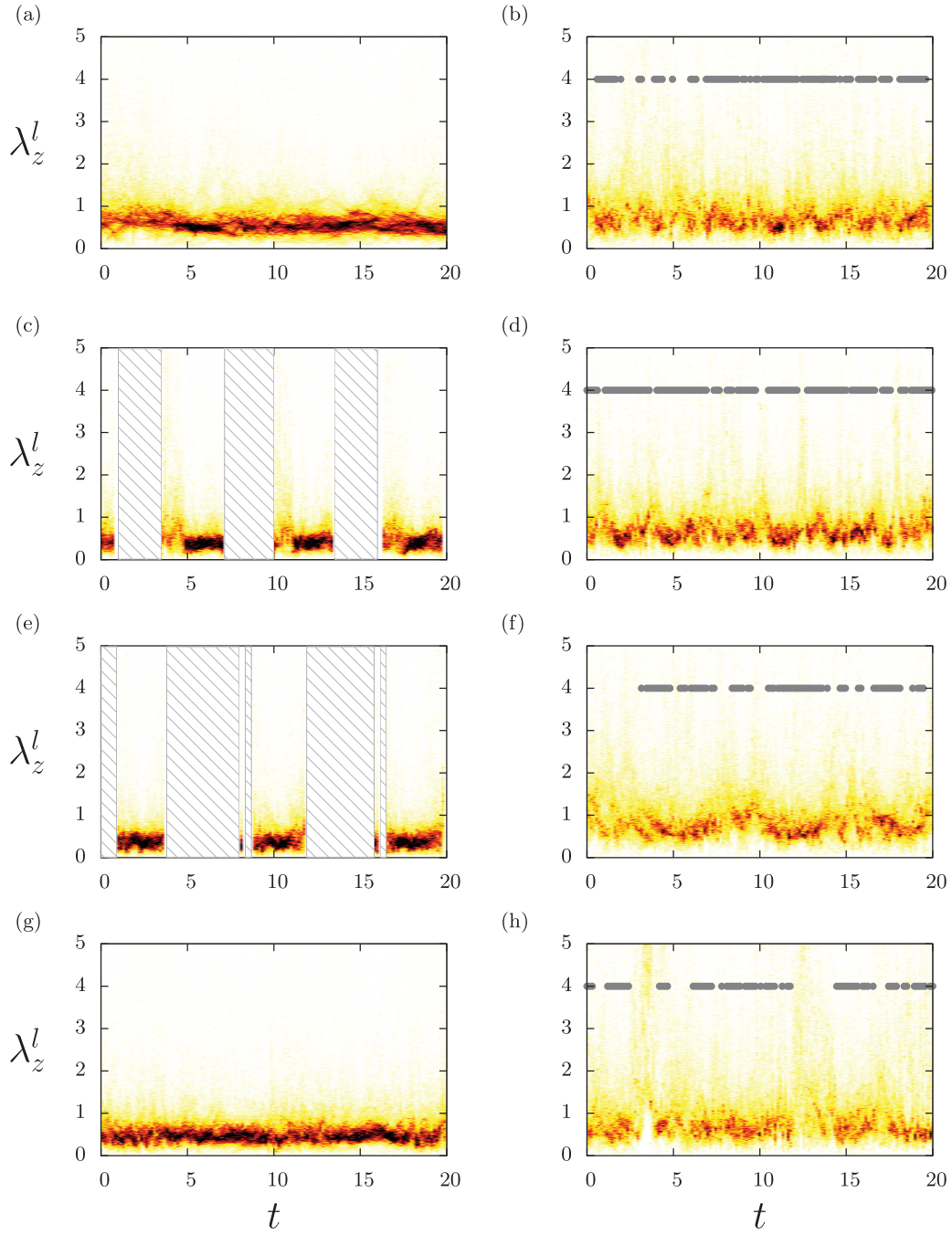


FIG. 13. Time series of the PDF of the local spanwise wavelength in the shear layer and wake regions: (a), (c), (e), and (g) on line L_1^+ ($\eta = 1$) and (b), (d), (f), and (h) on line L_2^+ ($x = 5$), in the (a) and (b) fixed and (c)–(h) oscillating body cases, for (c) and (d) $U^* = 3$, (e) and (f) $U^* = 6$, and (g) and (h) $U^* = 9$. The isocontours of the PDF are distributed in the range $[0, 2]$. In (b), (d), (f), and (h), gray dots indicate the samples considered in the selective time-averaging procedure $\langle (\cdot) \rangle_{t, L_2}^*$, defined in Sec. II B). In (c) and (e), striped areas denote discarded samples (low-vorticity level).

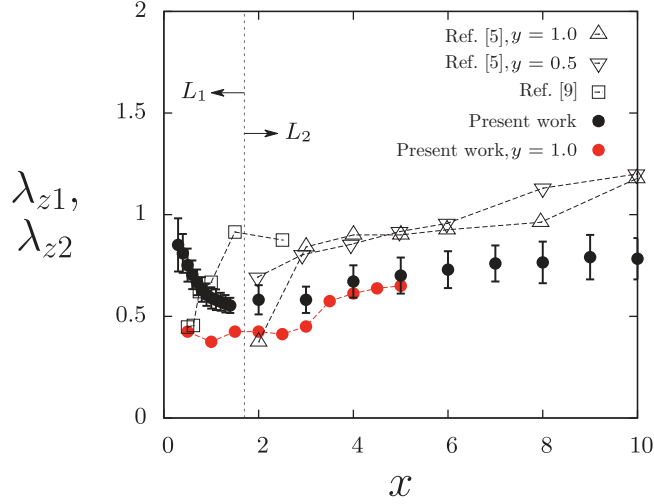


FIG. 14. Streamwise evolution of the spanwise wavelength in the fixed body case: comparison between the present results and the experimental measurements of Mansy *et al.* [5] ($Re = 600$) and Chyu and Rockwell [9] ($Re = 10^4$). For the present results, error bars indicate the standard deviation of the wavelength around the averaged value [defined by (5)]. The wavelengths obtained at $y = 1$ are also plotted for comparison.

close to $y = 0.5$ [Fig. 5(a)]. In order to visualize the influence of the sampling point location, the wavelengths obtained at $y = 1$, on the basis of the present simulation results, are reported in Fig. 14. At $y = 1$, a rapid change of the wavelength, qualitatively comparable to that observed in prior studies, can be noted at $x \approx 3$. For $x > 3$, the wavelengths are close to those obtained along lines L_2 : There is no major effect of the sampling point location in this zone; this is also suggested by the results of Mansy *et al.* [5]. In the near region ($x < 3$), the wavelengths are significantly lower than those previously determined in the shear layer, which confirms the impact of the sampling point location close to the body. Direct comparison with previous works may thus be questionable in this region. It should be mentioned that the amplitude of the spanwise fluctuations almost vanishes around $y = 1$ ($A_{z1} \approx 0$); the quantification of the wavelength in this zone may therefore be less relevant than in the shear layer, i.e., the area studied in the present work. The general evolution of λ_{z2} further in the wake ($x > 3$) is comparable to that reported by Mansy *et al.* [5], but the wavelengths are lower in the present study. In this part of the wake region where the sampling point location has a limited influence, this trend may denote an effect of the Reynolds number on the spanwise wavelength ($Re = 600$ in the experiments of Mansy *et al.* [5] versus $Re = 3900$ in the present simulations).

The streamwise evolutions of the spanwise wavelength in the fixed and oscillating body cases are compared in Fig. 15. The overall trend of the wavelength is similar in all cases studied. The alteration of the wavelength associated with body motion is concentrated in the shear layer region. In this region, lower minimum values of λ_{z1} , still close to $0.5D$, can be reached once the cylinder oscillates. In contrast, there is no important modification of λ_{z2} in the wake region; the variation of the wavelength between the different cases is generally smaller than its time variability for a given case (indicated by the error bars for $U^* = 3$, which is the case of maximum variability). In addition, the variation of λ_{z2} in this region is negligible compared to the variation of the (x, y) typical length scales of the wake, as discussed in Sec. V.

The above results concerning the spanwise wavelength reveal globally comparable streamwise evolutions in all cases, with decreasing and increasing trends in the shear layer and wake regions, respectively. They also confirm that the spanwise structure of the flow is differently altered in each region, once the cylinder vibrates: In the shear layer region, the amplification of the spanwise fluctuation magnitude noted in Sec. IV A is accompanied by a clear reduction of the spatial wavelength, while the spanwise pattern is essentially unaltered in the wake region.

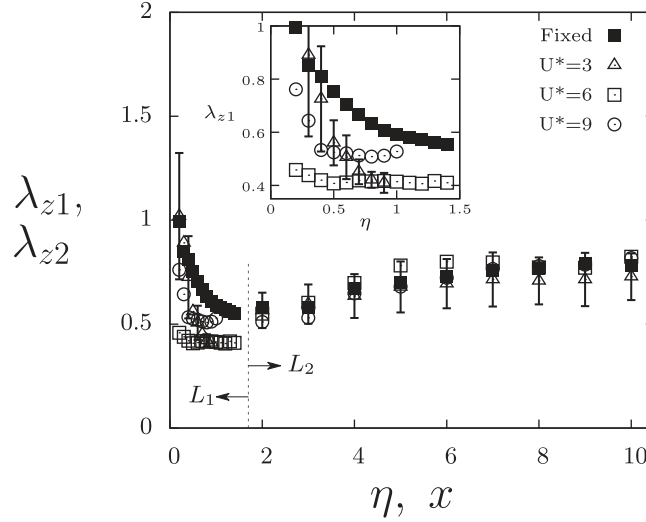


FIG. 15. Streamwise evolution of the spanwise wavelength, in the fixed and oscillating body cases. In the oscillating body cases, the wavelengths λ_{z1} are determined for $\{\zeta_y = 0, \zeta_y < 0\}$ (Sec. II B). Error bars indicate the standard deviation of the wavelength around the averaged value [defined by (5)] for $U^* = 3$, i.e., the case of maximum variability.

V. DISCUSSION

Some additional elements are examined in this section, which aims at connecting the present results with prior works and at providing some complementary analysis of the flow structure. The discussion is articulated around five principal points.

(i) *Mechanism of spanwise fluctuation amplification.* In order to explain the formation of planar vortices downstream of the body, Wu *et al.* [6] employed a concept of vortex filament. In this model, a vortex line, initially aligned with the z axis, exhibits a localized kink in response to any flow disturbance. When approaching a high-strain region, between two primary spanwise wake vortices, the distorted vortex line is stretched, resulting in an increase of the vorticity magnitude and in the formation of planar vortices. A comparable model had been proposed by Wei and Smith [13] in the shear layer region: A distorted vortex line in the shear layer is stretched as it approaches the forming spanwise wake vortex. An amplification of planar vorticity may thus be expected in the region of formation of the spanwise wake vortices. The present results tend to corroborate this model: A streamwise increase of the spanwise pattern amplitude is indeed observed close to the body (Fig. 12) and the peak amplitude is found in the region of formation of the spanwise vortices (Fig. 5). In the oscillating body cases, a substantial amplification of the spanwise fluctuations has been noted in the shear layers. On the basis of the above model, a possible mechanism at the origin of this amplification could be the additional stretching induced by body motion. This mechanism would mainly impact the flow close to the body, which is consistent with the present results.

(ii) *Transient behavior of the shear layers.* A schematic view of the boundary layer separating from the body is presented in Fig. 16. The nondimensional local momentum thickness at separation can be quantified as follows, at each spanwise location and each time instant:

$$\delta_s^l = \int_0^{n_m} \frac{V_t}{V_m} \left(1 - \frac{V_t}{V_m}\right) dn, \quad (6)$$

where n is the distance normal to the wall at the separation point, V_t the tangential flow velocity component [in the (x, y) plane], and V_m the maximum value of V_t in the boundary layer, reached at a distance n_m from the wall. The span-averaged and time- (fixed body) or phase-averaged (oscillating

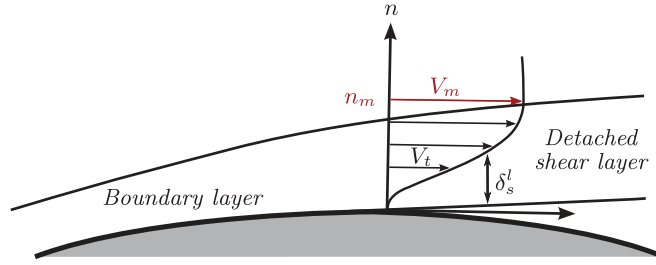


FIG. 16. Schematic view of the boundary layer separating from the cylinder.

body) value of δ_s^l is denoted by δ_s and referred to as momentum thickness in the following. Typical values of δ_s in the present cases range from 0.004 to 0.006. In plane mixing layers, the flow generally exhibits a transient regime before reaching a self-similar behavior associated with a linear growth of the shear layer thickness as a function of the streamwise distance [46]. The streamwise extent of the transient regime is of the order of a few hundred times the initial momentum thickness. Considering δ_s as an equivalent initial momentum thickness, the transient regime of the shear layers separating from the cylinder is thus expected to extend over a few body diameters (it is recalled that δ_s is normalized by the body diameter). Therefore, the separated shear layers observed downstream of the body are in a transient regime. For plane mixing layers, the transient regime is accompanied by significant variations of the amplitude and wavelength of the spanwise pattern [27,28]: In particular, the early development of the mixing layer is characterized by a decrease of the spanwise wavelength. Such behavior is also noted in the present simulation results (Fig. 15), which further highlights the analogy between plane mixing layers and the shear layers separating from the cylinder.

(iii) *Scaling of λ_{z1} with δ_s and effect of the instantaneous Reynolds number.* The analogy with plane mixing layers raises the question of the connection between the typical length scales of the cylinder shear layers and the momentum thickness at separation. This aspect is examined in Fig. 17(a), which

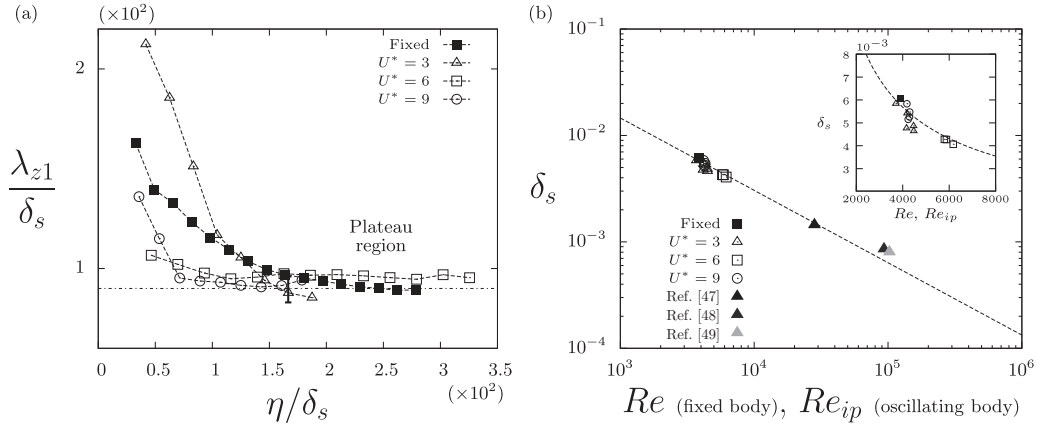


FIG. 17. Scaling of the shear layer spanwise wavelength with the momentum thickness of the boundary layer at separation: (a) streamwise evolution of λ_{z1} normalized by δ_s and (b) evolution of δ_s as a function of the Reynolds number (Re in the fixed body case and Re_{ip} in the oscillating body cases). In the oscillating body cases, the phase-averaged values are determined for $\{\zeta_y = 0, \zeta_y < 0\}$ in (a) and different phases are considered in (b). In (a), a dash-dotted line ($\lambda_{z1}/\delta_s = 90$) indicates the typical value of the normalized wavelength in the plateau region; an error bar shows the typical variation (standard deviation) of λ_{z1}/δ_s around this plateau value at different phases, for $U^* = 3$ and $\eta/\delta_s \approx 150$. In (b), the momentum thickness values issued from the experimental studies of Thom [47], Green [48], and Fage [49] are also reported for comparison.

represents the streamwise evolution of the spanwise wavelength normalized by δ_s in the four cases studied; the streamwise distance is also normalized by δ_s . In the oscillating body cases, δ_s and λ_{z1} are determined for $\{\zeta_y = 0, \dot{\zeta}_y < 0\}$, i.e., the same phase as in Sec. IV. As previously observed, all cases exhibit an initial decrease of the wavelength in the region very close to the cylinder. The streamwise extent of this decreasing trend varies from one case to the other, even after normalization of η by δ_s . Further downstream, the normalized wavelengths tend to collapse in a plateau region, where $\lambda_{z1}/\delta_s \approx 90$, in all cases studied. This relatively constant value of λ_{z1}/δ_s persists at other phases of body displacement; this is illustrated by the error bar in Fig. 17(a), which indicates the typical variation (standard deviation) of λ_{z1}/δ_s in the plateau region when changing the value of the phase, for $U^* = 3$. The present results suggest that the spanwise wavelength in the plateau region scales with the momentum thickness of the boundary layer at separation, the latter being altered when the body moves, as shown in the following. This scaling is comparable to that observed with the initial momentum thickness in plane mixing layers; it corroborates the above-mentioned connections between both flow configurations.

In the fixed body case, the boundary layer thickness varies as a function of the Reynolds number. The value of δ_s obtained from the present simulation data is plotted in Fig. 17(b) and compared to the momentum thickness values reported by Prasad and Williamson [16], which were issued from prior experimental studies at higher Re [47–49]. A global decrease is observed as a function of the Reynolds number. A fit function has been added to the plot to indicate the general trend.

When the body oscillates, the magnitude of the instantaneous oncoming flow velocity $|\mathbf{V}_{in}|$ fluctuates and so does the instantaneous Reynolds number, defined at each time instant as

$$\text{Re}_i = \frac{\rho_f |\mathbf{V}_{in}| D}{\mu} = \text{Re} \sqrt{(1 - \dot{\zeta}_x)^2 + \dot{\zeta}_y^2}. \quad (7)$$

In the fixed body case, Re_i is equal to Re . The possible connection between the momentum thickness and Re_i is examined in Fig. 17(b). In the three oscillating body cases, δ_s is plotted as a function of the phase-averaged value of Re_i , denoted by Re_{ip} , for different phases around $\{\zeta_y = 0, \dot{\zeta}_y < 0\}$ (i.e., when the upper shear layer is well developed). It appears that the variation of δ_s as a function of Re_{ip} tends to follow a decreasing trend comparable to that observed in the fixed body case.

The results presented in Fig. 17 suggest that the modification of the spanwise wavelength in the shear layers when the body oscillates may be closely related to the instantaneous Reynolds number, through an alteration of the boundary layers, which has been quantified by means of the momentum thickness at separation.

(iv) *Spanwise wavelength in the near region versus Reynolds number.* The spanwise wavelengths measured in prior works, in the near region downstream of fixed cylinders, are reported in Fig. 18 as functions of the Reynolds number and compared with the present value of λ_{z1} obtained in the above-mentioned plateau region ($\eta = 150\delta_s$). The spanwise wavelength near the fixed body exhibits a global decreasing trend as Re is increased. The previous analysis (Fig. 17) suggests that when the body oscillates, the spanwise wavelength in the plateau region tends to decrease as a function of the instantaneous Reynolds number, since δ_s decreases as Re_{ip} increases. The values of λ_{z1} measured at $\eta = 150\delta_s$ (plateau region) in the three oscillating body cases and for different phases are plotted as functions of Re_{ip} in Fig. 18. The decreasing trend of λ_{z1} is qualitatively comparable to that noted in the fixed body case. The relative dispersion of λ_{z1} in the oscillating body cases, however, indicates that the wavelength depends not only on Re_i , but other elements such as the vibration amplitudes and frequencies or the cylinder trajectory shape may also influence wavelength selection. It should also be mentioned that the wavelengths reported in Fig. 18 are measured at various locations in the near region of the wake. As previously discussed in Sec. IV B (Fig. 14), the spanwise wavelength may significantly vary as a function of the sampling point location. The typical evolution of the wavelength observed in Fig. 18 should therefore be confirmed by systematic measurements at comparable locations, over a range of Reynolds-number values.

(v) *λ_{z2} versus typical length scales in the (x, y) plane.* Body oscillation is accompanied by a profound reorganization of the (x, y) flow structure in the wake region, as illustrated in Fig. 5. In

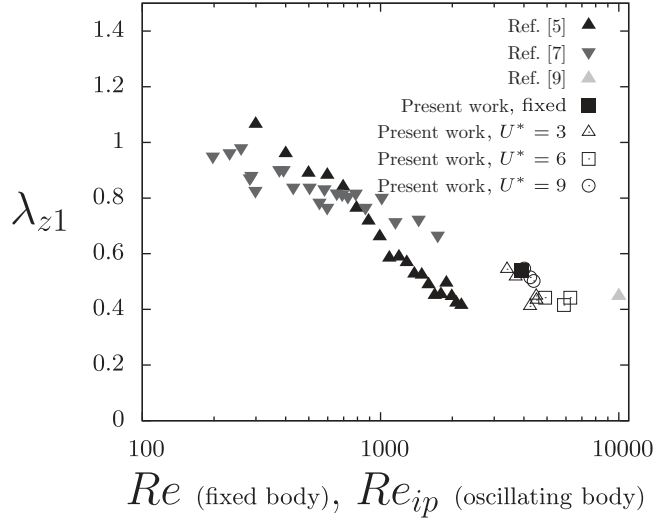


FIG. 18. Evolution of the spanwise wavelength measured close to the body as a function of the Reynolds number (Re in the fixed body case and Re_{ip} in the oscillating body cases): comparison between previous works (fixed body case) and present results (fixed and oscillating body cases). In previous works, the wavelength was measured at $x = 3$ [5], $x \approx 4$ [7], and $x = 0.5$ [9]. In the present cases, the values of λ_{z1} at $\eta = 150\delta_s$ are reported and various phases are considered in the oscillating body cases.

order to quantify this reorganization, typical streamwise and crossflow length scales of the wake are defined in the following. The streamwise length scale relates to the streamwise distance between the primary wake vortices. It is defined as

$$\lambda_x(x) = \langle V_x^{\text{av}} \rangle_{t, L_2}(x) / f_s, \quad (8)$$

where V_x^{av} is the span-averaged in-line flow velocity (i.e., aligned with the x axis) and f_s is the shedding frequency of the primary wake vortices (equal to the crossflow vibration frequency f_y through lock-in when the body oscillates and referred to as Strouhal frequency f_{St} in the fixed body case). The crossflow width of the wake, which relates to the crossflow distance between the primary wake vortices, is defined as

$$\lambda_y(x) = y_{L_2^+}(x) - y_{L_2^-}(x), \quad (9)$$

where $y_{L_2^+}$ and $y_{L_2^-}$ are the crossflow positions of lines L_2^+ and L_2^- .

The relative variations of λ_{z2} with λ_x and λ_y , for $x \in [4, 10]$ (wake region), are depicted in Figs. 19(a) and 19(b), respectively. The streamwise length scale of the wake ranges from 3.5 to 7.5 body diameters, while its width can reach up to 1.6 diameters; for $U^* = 3$, the wake vortices are aligned along the x axis and $\lambda_y = 0$. In comparison to the substantial variations of the typical streamwise and crossflow length scales, the variation of the spanwise wavelength remains very small: $\lambda_{z2} \in [0.6, 0.8]$. The ratio between the spanwise wavelength and the streamwise (or crossflow) length scale thus exhibits large modulations, contrary to what was suggested by prior results concerning fixed cylinders [26]. No particular trend is noted as a function of λ_x or λ_y .

The above observations indicate that the structure of the flow pattern in the spanwise direction is relatively independent of body motion and the associated distortion of the wake in the (x, y) plane.

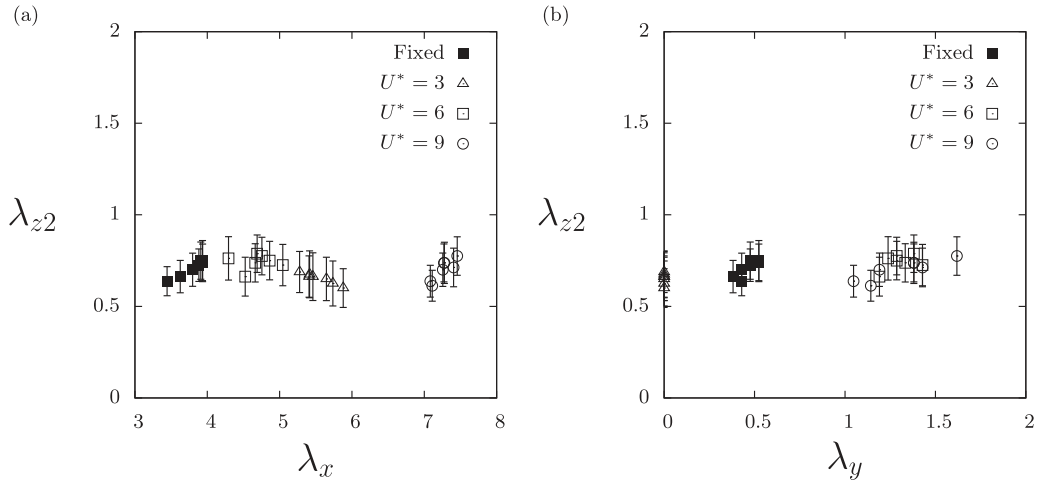


FIG. 19. Typical length scales of the flow structure in the wake region: spanwise wavelength as a function of the (a) streamwise length scale and (b) crossflow width of the wake, in the four cases studied. In each case, seven streamwise positions are considered in the range $x \in [4, 10]$. Error bars indicate the standard deviation of the wavelength around the averaged value [defined by (5)].

VI. SUMMARY

The flow downstream of a fixed or freely vibrating cylinder at $Re = 3900$ has been investigated on the basis of numerical simulation results. The three oscillating body cases are typical cases of vortex-induced vibrations covering wide ranges of oscillation amplitudes and frequencies. Focus was placed on the three-dimensional structure of the flow, in both the shear layer and wake regions, and on its possible alteration once the body vibrates.

In all the cases studied, the flow exhibits pronounced fluctuations distributed along the span. Qualitatively, two principal features have been identified: the spanwise undulations of the shear layers separating from the body and the development of vortical structures elongated in the (x, y) plane, referred to as planar vortices. A systematic quantitative analysis of flow three dimensionality, based on the monitoring of crossflow vorticity fluctuations in the spanwise direction, revealed, in all cases, a peak of fluctuation amplitude in the near region (close to the area of formation of the spanwise wake vortices) and opposite trends of the spanwise wavelength in the shear layer and wake regions. The spanwise wavelength tends to decrease as a function of the streamwise distance down to a minimum value close to 0.5 body diameters in the shear layers and then slowly increases further in the wake. In spite of these streamwise variations, the wavelength presents a comparable order of magnitude in the different regions. Some connections have been noted between the evolution of the spanwise patterns in the shear layers and the transient regime previously observed for plane mixing layers.

The spanwise structure of the flow is differently altered in the shear layer and wake regions, once the cylinder vibrates.

In the shear layer region, flow visualizations indicate that body motion is associated with an enhancement of planar vortex formation. This observation is corroborated by the quantitative analysis, which shows that spanwise fluctuations of vorticity are substantially amplified in the oscillating body cases. The amplification of the fluctuation magnitude is accompanied by a clear reduction of the spanwise wavelength. The spanwise wavelength tends to decrease as a function of the instantaneous Reynolds number, i.e., based on the instantaneous flow velocity seen by the moving body: The global decreasing trend of the wavelength versus Reynolds number, previously reported for fixed cylinders, seems to persist in the oscillating body case when considering the instantaneous Reynolds number. The present results suggest that the spanwise wavelength scales with the momentum thickness of the boundary layer at separation. The momentum thickness is altered when the cylinder moves and it is

found to decrease when the instantaneous Reynolds number increases, which may shed some light on the above trend.

In the wake region, a qualitative observation shows that the planar vortices tend to be more regularly aligned in the (x, y) plane when the body oscillates, suggesting a possible homogenization of the three-dimensional patterns. However, the spanwise structure of the flow is essentially unaltered: The spanwise fluctuation amplitudes and wavelengths remain close to those observed in the fixed body case. In particular, the variation of the spanwise wavelength between the different cases is found to be negligible, compared to the major modifications of the typical streamwise and crossflow length scales of the wake.

ACKNOWLEDGMENTS

This study is part of a Ph.D. work [32] funded by the French Ministry of Research. It was performed using HPC resources from GENCI (Grants No. x20152a7184 and No. c20162a7184).

APPENDIX A: COMPUTATIONAL DOMAIN AND SPATIAL AND TEMPORAL DISCRETIZATIONS

The flow is discretized on a nonstructured mesh in a rectangular domain. Periodic boundary conditions are used in the spanwise and crossflow directions. The domain extends from $x = -30$ at the inlet to $x = 90$ at the outlet and from $y = -30$ to $y = 30$ in the crossflow direction. It is recalled that the lengths are nondimensionalized by D . The spanwise length of the cylinder is set to ten diameters (from $z = -5$ to $z = 5$).

In addition to the validation results reported by Gsell *et al.* [34], convergence results concerning the influence of the computational mesh on the spanwise wavelengths measured downstream of the body are presented in this appendix. The values of $\lambda_{z1}(\eta = 1)$ and $\lambda_{z2}(x = 10)$ obtained for three different meshes in the case of peak oscillation amplitudes ($U^* = 6$) are plotted in Fig. 20. The meshes are composed of 20×10^6 , 45×10^6 , and 80×10^6 cells. The number of cells is increased by increasing grid resolution in the near wake region ($x < 15$) and the number of cells in the spanwise direction. In the (x, y) plane, the meshes are composed of 10^5 , 1.50×10^5 , and 2×10^5 cells. The

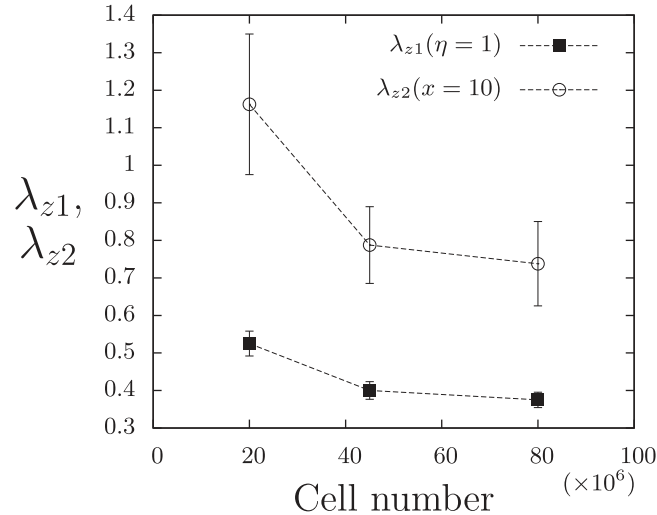


FIG. 20. Influence of the computational mesh on the spanwise wavelengths downstream of the body: evolutions of $\lambda_{z1}(\eta = 1)$ and $\lambda_{z2}(x = 10)$ as functions of the number of cells, in the oscillating body case, for $U^* = 6$ (peak oscillation amplitudes). Error bars indicate the standard deviation of the wavelength around the averaged value [defined by (5)].

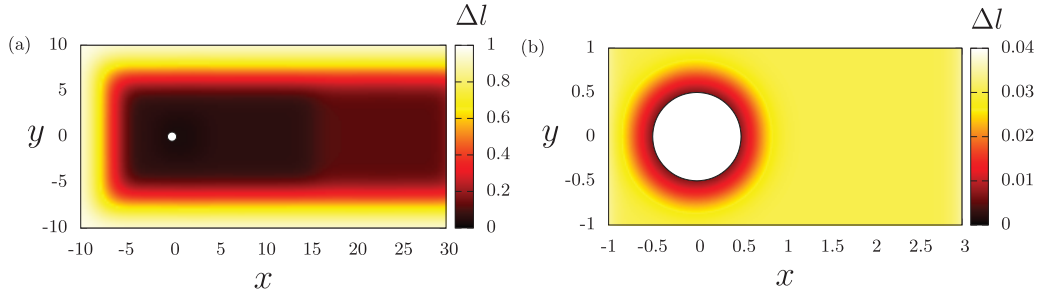


FIG. 21. Visualization of the computational mesh: isocontours of the cell length Δl in the (x, y) plane: (a) an overview and (b) a closer view.

numbers of cells in the spanwise direction are equal to 200, 300, and 400. Figure 20 shows that the measured wavelengths, as well as their typical time variability [standard deviation defined by (5)], significantly decrease between the first and second meshes and remain relatively constant between the second and third meshes. The second mesh (45×10^6 cells) was selected for the present simulations.

A visualization of the selected mesh is presented in Fig. 21, which shows isocontours of the cell length Δl in the (x, y) plane; the cells have a square aspect ratio in this plane. The cell length in the wall-normal direction at the cylinder surface is 1.5×10^{-3} . The cell size in the spanwise direction is $\Delta z = 0.033$. Close to the cylinder surface, the boundary layer spans over 25 cells, approximately. The separated shear layers span over 10 to 15 cells, depending on the streamwise location.

The nondimensional sampling frequency associated with the numerical time step is equal to 20. The ratios between the sampling frequency and the expected wake and shear-layer unsteadiness frequencies are approximately equal to 100 and 17, respectively.

APPENDIX B: COMPARISON WITH PRIOR WORKS IN THE FIXED BODY CASE

The Strouhal frequency f_{St} , time-averaged in-line force coefficient $\overline{C_x}$, root-mean-square value of the crossflow force coefficient $(C_y)_{rms}$, and separation angle θ_s issued from the present simulations in the fixed body case are compared to prior numerical and experimental results at the same Reynolds number in Table I. The wake frequency, time-averaged in-line force, and separation angle match those reported in previous works. The value of $(C_y)_{rms}$ varies from one study to the other; it can be noted that the value obtained in the present study is close to that predicted by the empirical function proposed by Norberg [51], based on a number of results previously reported in the literature.

TABLE I. Comparison of the Strouhal frequency f_{St} , time-averaged in-line force coefficient $\overline{C_x}$, rms value of the crossflow force coefficient $(C_y)_{rms}$, and separation angle θ_s issued from the present simulations in the fixed body case with data reported in prior numerical (Num.) and experimental (Expt.) works, at $Re = 3900$.

Study	Num. or Expt.	f_{St}	$\overline{C_x}$	$(C_y)_{rms}$	θ_s (deg)
present work	Num.	0.21	0.92	0.046	86.8
Wieselsberger [50]	Expt.		0.93		
Norberg [51] (empirical functions)	Expt.	0.21		0.057	
Beaudan and Moin [33]	Num.	0.203	1.00		85.8
Ouvrard <i>et al.</i> [52]	Num.	0.22	0.94	0.092	
Afgan <i>et al.</i> [53]	Num.	0.207	1.02	0.137	86
Wornom <i>et al.</i> [54]	Num.	0.21	0.99	0.108	89

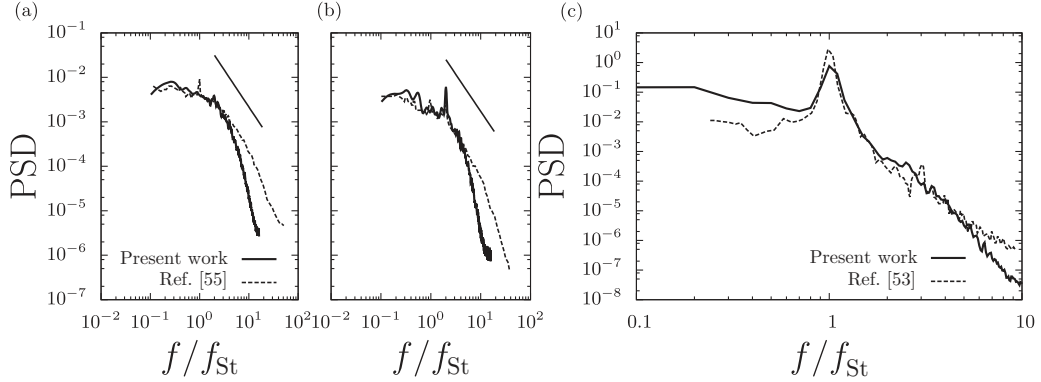


FIG. 22. Power spectral densities of the time series of (a) and (b) the streamwise component of flow velocity at (a) $(x, y) = (3, 0)$ and (b) $(x, y) = (5, 0)$ and (c) the crossflow force coefficient, in the fixed body case. The frequencies are normalized by the shedding frequency of the primary wake vortices (f_{St}). In (a) and (b), a line indicates the $-5/3$ slope.

The span-averaged power spectral densities (PSDs) of the streamwise component of flow velocity at $(x, y) = (3, 0)$ and $(x, y) = (5, 0)$ are represented in Figs. 22(a) and 22(b); the frequencies are normalized by the Strouhal frequency. The PSDs issued from the experimental work of Ong and Wallace [55] are also plotted for comparison purpose. The present PSDs are close to the experimental results. The deviation which can be observed in the high-frequency range exemplifies the previously mentioned limitations in the scales that can be simulated by the present approach. It should however be noted that such deviation does not impact the dominant structures of the flow analyzed here since they essentially relate to the rest of the spectrum, which is accurately predicted by the present approach; this is illustrated by the convergence study in Fig. 20, i.e., a finer resolution improves the prediction of the high-frequency part of the spectrum but does not significantly modify the dominant spanwise wavelength.

The PSD of the crossflow force coefficient is plotted in Fig. 22(c) and compared to the PSD reported by Afgan *et al.* [53] in the same flow configuration. As in Figs. 22(a) and 22(b), the frequencies are normalized by the Strouhal frequency. Both PSDs are comparable, with a well-defined peak at the Strouhal frequency.

An additional comparison of the present simulation results with prior works in the fixed body case is reported in Appendix C, which is dedicated to the analysis of the shear layer frequency content. As shown in this Appendix, the shear-layer unsteadiness predicted by the present simulation approach is consistent with prior observations.

APPENDIX C: TEMPORAL FREQUENCY ANALYSIS OF THE SHEAR LAYERS

Previous works concerning fixed cylinders have shown that, when the Reynolds number based on the body diameter and oncoming flow velocity is larger than approximately 1000, shear layer vortices may develop. Bloor [11] detected these vortices by measuring velocity fluctuations close to the detached shear layers and suggested a ratio between the shear layer frequency f_{SL} and the shedding frequency of the primary wake vortices f_{St} varying as $Re^{0.5}$. The evolution of this frequency ratio as a function of Re has been discussed in a number of studies [12–21]. By fitting many measurements over a wide range of Reynolds numbers, Prasad and Williamson [16] proposed the following relation:

$$f_{SL}/f_{St} = 0.0235 Re^{0.67}. \quad (C1)$$

The footprint of shear layer vortices was clearly identified in the fixed body case [Fig. 11(a)]. Figure 23 represents, in this case, the span-averaged PSD of the time series of spanwise vorticity in the shear layer, at $(x, y) = (0.32, 0.53)$. The frequencies are normalized by the wake vortex shedding

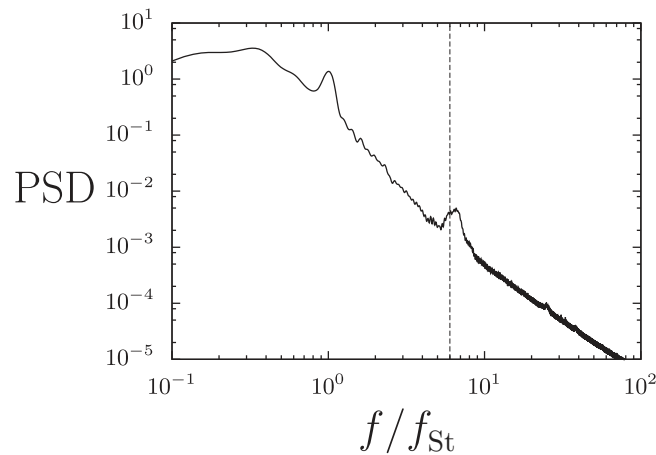


FIG. 23. Span-averaged PSD of the time series of spanwise vorticity in the shear layer, in the fixed body case. The vorticity was sampled at $(x, y) = (0.32, 0.53)$. The frequencies are normalized by the shedding frequency of the primary wake vortices (f_{St}). The frequency ratio predicted by (C1) is indicated by a dashed line.

frequency ($f_{St} = 0.21$). At $Re = 3900$, the frequency ratio predicted by (C1) is $f_{SL}/f_{St} \approx 6$ (dashed line in Fig. 23). Two peaks can be noted in the plot: the first peak at f_{St} and the second peak at $6.5 f_{St}$, which is close to the above prediction.

-
- [1] A. Roshko, Perspectives on bluff body aerodynamics, *J. Wind Eng. Ind. Aerodyn.* **49**, 79 (1993).
 - [2] C. H. K. Williamson, Vortex dynamics in the cylinder wake, *Annu. Rev. Fluid Mech.* **28**, 477 (1996).
 - [3] C. H. K. Williamson and A. Roshko, Vortex formation in the wake of an oscillating cylinder, *J. Fluids Struct.* **2**, 355 (1988).
 - [4] C. H. K. Williamson, Three-dimensional wake transition, *J. Fluid Mech.* **328**, 345 (1996).
 - [5] H. Mansy, P.-M. Yang, and D. R. Williams, Quantitative measurements of three-dimensional structures in the wake of a circular cylinder, *J. Fluid Mech.* **270**, 277 (1994).
 - [6] J. Wu, J. Sheridan, J. Soria, and M. C. Welsh, An experimental investigation of streamwise vortices in the wake of a bluff body, *J. Fluid. Struct.* **8**, 621 (1994).
 - [7] J. Wu, J. Sheridan, K. Hourigan, and J. Soria, Shear layer vortices and longitudinal vortices in the near wake of a circular cylinder, *Exp. Therm. Fluid Sci.* **12**, 169 (1996).
 - [8] J.-C. Lin, P. Vorobieff, and D. Rockwell, Three-dimensional patterns of streamwise vorticity in the turbulent near-wake of a cylinder, *J. Fluid. Struct.* **9**, 231 (1995).
 - [9] C. Chyu and D. Rockwell, Evolution of patterns of streamwise vorticity in the turbulent near wake of a circular cylinder, *J. Fluid Mech.* **320**, 117 (1996).
 - [10] M. Hayakawa and F. Hussain, Three-dimensionality of organized structures in a plane turbulent wake, *J. Fluid Mech.* **206**, 375 (1989).
 - [11] M. S. Bloor, The transition to turbulence in the wake of a circular cylinder, *J. Fluid Mech.* **19**, 290 (1964).
 - [12] M. Braza, P. Chassaing, and H. H. Minh, Numerical study and physical analysis of the pressure and velocity fields in the near wake of a circular cylinder, *J. Fluid Mech.* **165**, 79 (1986).
 - [13] T. Wei and C. R. Smith, Secondary vortices in the wake of circular cylinders, *J. Fluid Mech.* **169**, 513 (1986).
 - [14] C. Norberg, Effects of Reynolds number and a low-intensity freestream turbulence on the flow around a circular cylinder, Chalmers University Report No. 87/2, 1987 (unpublished).
 - [15] M. F. Unal and D. Rockwell, On vortex formation from a cylinder. Part 1. The initial instability, *J. Fluid Mech.* **190**, 491 (1988).

- [16] A. Prasad and C. H. K. Williamson, The instability of the shear layer separating from a bluff body, *J. Fluid Mech.* **333**, 375 (1997).
- [17] J. Kim and H. Choi, Instability of the shear layer separating from a circular cylinder, DTIC Report No. ADP013694, 2001 (unpublished).
- [18] S. Rajagopalan and R. A. Antonia, Flow around a circular cylinder—Structure of the near wake shear layer, *Exp. Fluids* **38**, 393 (2005).
- [19] M. C. Thompson and K. Hourigan, The shear-layer instability of a circular cylinder wake, *Phys. Fluids* **17**, 021702 (2005).
- [20] S. Dong, G. E. Karniadakis, A. Ekmekci, and D. Rockwell, A combined direct numerical simulation–particle image velocimetry study of the turbulent near wake, *J. Fluid Mech.* **569**, 185 (2006).
- [21] M. M. Rai, A computational investigation of the instability of the detached shear layers in the wake of a circular cylinder, *J. Fluid Mech.* **659**, 375 (2010).
- [22] J. C. Lasheras, J. S. Cho, and T. Maxworthy, On the origin and evolution of streamwise vortical structures in a plane, free shear layer, *J. Fluid Mech.* **172**, 231 (1986).
- [23] L. P. Bernal and A. Roshko, Streamwise vortex structure in plane mixing layers, *J. Fluid Mech.* **170**, 499 (1986).
- [24] R. W. Metcalfe, S. Menon, M. E. Brachet, and S. Orszag, Secondary instability of a temporally growing mixing layer, *J. Fluid Mech.* **184**, 207 (1987).
- [25] L.-S. Huang and C.-M. Ho, Small-scale transition in a plane mixing layer, *J. Fluid Mech.* **210**, 475 (1990).
- [26] C. H. K. Williamson, J. Wu, and J. Sheridan, Scaling of streamwise vortices in wakes, *Phys. Fluids* **7**, 2307 (1995).
- [27] J. Jimenez, A spanwise structure in the plane shear layer, *J. Fluid Mech.* **132**, 319 (1983).
- [28] J. H. Bell and R. D. Mehta, Measurements of the streamwise vortical structures in a plane mixing layer, *J. Fluid Mech.* **239**, 213 (1992).
- [29] J. S. Leontini, M. C. Thompson, and K. Hourigan, Three-dimensional transition in the wake of a transversely oscillating cylinder, *J. Fluid Mech.* **577**, 79 (2007).
- [30] P. W. Bearman and E. D. Obasaju, An experimental study of pressure fluctuations on fixed and oscillating square-section cylinders, *J. Fluid Mech.* **119**, 297 (1982).
- [31] J. C. R. Hunt, A. A. Wray, and P. Moin, Eddies, stream, and convergence zones in turbulent flows, in *Proceedings of the 1988 Summer Program* (Center for Turbulence Research, Stanford, CA, 1988), pp. 193–208.
- [32] S. Gsell, Vortex-induced vibrations of a rigid circular cylinder, Ph.D. thesis, University of Toulouse, 2016.
- [33] P. Beaudan and P. Moin, Numerical experiments on the flow past a circular cylinder at sub-critical Reynolds number, Department of Mechanical Engineering, Stanford University Report No. TF-62, 1994 (unpublished).
- [34] S. Gsell, R. Bourguet, and M. Braza, Two-degree-of-freedom vortex-induced vibrations of a circular cylinder at $Re = 3900$, *J. Fluid. Struct.* **67**, 156 (2016).
- [35] N. Jauvtis and C. H. K. Williamson, The effect of two degrees of freedom on vortex-induced vibration at low mass and damping, *J. Fluid Mech.* **509**, 23 (2004).
- [36] J. M. Dahl, F. S. Hover, M. S. Triantafyllou, and O. H. Oakley, Dual resonance in vortex-induced vibrations at subcritical and supercritical Reynolds numbers, *J. Fluid Mech.* **643**, 395 (2010).
- [37] Navrose and S. Mittal, Free vibrations of a cylinder: 3-D computations at $Re = 1000$, *J. Fluid. Struct.* **41**, 109 (2013).
- [38] N. Cagney and S. Balabani, Streamwise vortex-induced vibrations of cylinders with one and two degrees of freedom, *J. Fluid Mech.* **758**, 702 (2014).
- [39] P. W. Bearman, Vortex shedding from oscillating bluff bodies, *Annu. Rev. Fluid Mech.* **16**, 195 (1984).
- [40] T. Sarpkaya, A critical review of the intrinsic nature of vortex-induced vibrations, *J. Fluid. Struct.* **19**, 389 (2004).
- [41] C. H. K. Williamson and R. N. Govardhan, Vortex-induced vibrations, *Annu. Rev. Fluid Mech.* **36**, 413 (2004).
- [42] M. P. Paidoussis, S. J. Price, and E. de Langre, *Fluid-Structure Interactions: Cross-Flow-Induced Instabilities* (Cambridge University Press, Cambridge, 2010).

- [43] Available at www.numeca.com
- [44] C. Norberg, LDV-measurements in the near wake of a circular cylinder, in *Proceedings of the 1998 Conference on Bluff Body Wakes and Vortex-Induced Vibration*, edited by P. W. Bearman and C. H. K. Williamson (ASME, New York, 1998), paper FEDSM98-521.
- [45] J. Carberry, J. Sheridan, and D. Rockwell, Controlled oscillations of a cylinder: Forces and wake modes, *J. Fluid Mech.* **538**, 31 (2005).
- [46] A. K. M. F. Hussain and M. F. Zedan, Effects of the initial condition on the axisymmetric free shear layer: Effects of the initial momentum thickness, *Phys. Fluids* **21**, 1100 (1978).
- [47] A. Thom, The boundary layer of the front portion of a cylinder, British Aeronautical Research Council Report No. R & M 1176, 1928 (unpublished).
- [48] J. J. Green, The viscous layer associated with a circular cylinder, British Aeronautical Research Council Report No. R & M 1313, 1930 (unpublished).
- [49] A. Fage, The air flow around a circular cylinder in the region where the boundary layer separates from the surface, British Aeronautical Research Council Report No. R & M 1179, 1928 (unpublished).
- [50] C. Wieselsberger, New data on the laws of fluid resistance, National Advisory Committee for Aeronautics Report No. 84, 1922 (unpublished).
- [51] C. Norberg, Fluctuating lift on a circular cylinder: Review and new measurements, *J. Fluid. Struct.* **17**, 57 (2003).
- [52] H. Ouvrard, B. Koobus, A. Dervieux, and M. V. Salvetti, Classical and variational multiscale LES of the flow around a circular cylinder on unstructured grids, *Comput. Fluids* **39**, 1083 (2010).
- [53] I. Afgan, Y. Kahil, S. Benhamadouche, and P. Sagaut, Large eddy simulation of the flow around single and two side-by-side cylinders at subcritical Reynolds numbers, *Phys. Fluids* **23**, 075101 (2011).
- [54] S. Wornom, H. Ouvrard, M. V. Salvetti, B. Koobus, and A. Dervieux, Variational multiscale large-eddy simulations of the flow past a circular cylinder: Reynolds number effects, *Comput. Fluids* **47**, 44 (2011).
- [55] L. Ong and J. Wallace, The velocity field of the turbulent very near wake of a circular cylinder, *Exp. Fluids* **20**, 441 (1996).