



HAL
open science

Contribution of spatial heterogeneity in effective population sizes to the variance in pairwise measures of genetic differentiation

Jérôme Prunier, Vincent Dubut, Lounes Chikhi, Simon Blanchet

► **To cite this version:**

Jérôme Prunier, Vincent Dubut, Lounes Chikhi, Simon Blanchet. Contribution of spatial heterogeneity in effective population sizes to the variance in pairwise measures of genetic differentiation. *Methods in Ecology and Evolution*, 2017, 8 (12), pp.1866-1877. 10.1111/2041-210X.12820 . hal-01681597

HAL Id: hal-01681597


<https://hal.science/hal-01681597>

Submitted on 26 Apr 2018

HAL is a multi-disciplinary open access archive for the deposit and dissemination of scientific research documents, whether they are published or not. The documents may come from teaching and research institutions in France or abroad, or from public or private research centers.

L'archive ouverte pluridisciplinaire **HAL**, est destinée au dépôt et à la diffusion de documents scientifiques de niveau recherche, publiés ou non, émanant des établissements d'enseignement et de recherche français ou étrangers, des laboratoires publics ou privés.

Contribution of spatial heterogeneity in effective population sizes to the variance in pairwise measures of genetic differentiation

Jérôme G. Prunier¹  | Vincent Dubut² | Lounès Chikhi^{3,4} | Simon Blanchet^{1,3}

¹Theoretical and Experimental Ecology Station (UMR 5371), National Center for Scientific Research (CNRS), Paul Sabatier University (UPS), Moulis, France

²Mediterranean Institute of marine and terrestrial Biodiversity and Ecology (UMR 7263), Aix-Marseille University, CNRS, Research and Development Institute, Avignon University, Centre Saint Charles, Marseille, France

³Biological Evolution and Diversity Research Laboratory (UMR 5174), UPS, CNRS, National Teacher Training School in Agronomy, Toulouse, France

⁴Gulbenkian Scientific Institute, Rua da Quinta Grande, Oeiras, Portugal

Correspondence

Jérôme G. Prunier

Email: jerome.prunier@gmail.com

Funding information

Office Nationale de l'Eau et des Milieux Aquatiques; LABEX, Grant/Award Number: ANR-10-LABX-41; Laboratoire International Associé - Bioinformatics, Ecology, Evolution, Genomics and Behaviour; CNRS

Abstract

1. Pairwise measures of neutral genetic differentiation are supposed to contain information about past and ongoing dispersal events and are thus often used as dependent variables in correlative analyses to elucidate how neutral genetic variation is affected by landscape connectivity. However, spatial heterogeneity in the intensity of genetic drift, stemming from variations in population sizes, may inflate variance in measures of genetic differentiation and lead to erroneous or incomplete interpretations in terms of connectivity. Here, we tested the efficiency of two distance-based metrics designed to capture the unique influence of spatial heterogeneity in local drift on genetic differentiation. These metrics are easily computed from estimates of effective population sizes or from environmental proxies for local carrying capacities, and allow us to introduce the hypothesis of Spatial-Heterogeneity-Effective-Population-Sizes (SHNe). SHNe can be tested in a way similar to isolation-by-distance or isolation-by-resistance within the classical landscape genetics hypothesis-testing framework.
2. We used simulations under various models of population structure to investigate the reliability of these metrics to quantify the unique contribution of SHNe in explaining patterns of genetic differentiation. We then applied these metrics to an empirical genetic dataset obtained for a freshwater fish (*Gobio occitaniae*).
3. Simulations showed that SHNe explained up to 60% of variance in genetic differentiation (measured as F_{st}) in the absence of gene flow, and up to 20% when migration rates were as high as 0.10. Furthermore, one of the two metrics was particularly robust to uncertainty in the estimation of effective population sizes (or proxies for carrying capacity). In the empirical dataset, the effect of SHNe on spatial patterns of F_{st} was five times higher than that of isolation-by-distance, uniquely contributing to 41% of variance in pairwise F_{st} . Taking the influence of SHNe into account also allowed decreasing the signal-to-noise ratio, and improving the upper estimate of effective dispersal distance.
4. We conclude that the use of SHNe metrics in landscape genetics will substantially improve the understanding of evolutionary drivers of genetic variation, providing substantial information as to the actual drivers of patterns of genetic differentiation in addition to traditional measures of Euclidean distance or landscape resistance.

KEYWORDS

dispersal, evolutionary forces, genetic drift, landscape genetics, population genetics, variance partitioning

1 | INTRODUCTION

The maintenance of effective dispersal capacities among demes is of tremendous importance for the viability of spatially structured populations (Wiens, 1997). Given the technical challenges of directly monitoring individual movements, landscape genetics has emerged as an efficient way of assessing functional landscape connectivity (Tischendorf & Fahrig, 2000), i.e. the influence of landscape configuration on effective dispersal between populations (i.e. gene flow; Barton & Bengtsson, 1986), by combining methods from population genetics, landscape ecology and spatial statistics (Manel, Schwartz, Luikart, & Taberlet, 2003; but see Dyer, 2015).

One of the main assets of landscape genetics is that it allows assessing functional landscape connectivity without the need for the quantitative inference of dispersal parameters (dispersal rate, dispersal distance or effective numbers of migrants; see Broquet & Petit, 2009 for a review). Pairwise measures of neutral genetic differentiation (or “genetic distances”) such as F -statistics (e.g. F_{st} ; Wright, 1943) are supposed to contain information about past effective dispersal events (Jaquiéry, Broquet, Hirzel, Yearsley, & Perrin, 2011) and are thus considered a proxy for gene flow. The direct use of F -statistics as a proxy for gene flow ensues from the seminal work by Wright (1943) who showed that, under the specific assumptions of the island model, gene flow (the product of effective deme size N_e and immigration rate m) between two populations could be derived from a measure of neutral genetic variance, following $F_{st} = 1/(4Nm + 1)$. Genetic distances are thus often used as dependent variables in correlative analyses to elucidate how neutral genetic variation is affected by landscape configuration (Guillot, Leblois, Coulon, & Frantz, 2009; Holderegger & Wagner, 2008). When carried out within a hypothesis-testing framework depicting the expected statistical relationships between landscape and neutral genetic data (Richardson, Brady, Wang, & Spear, 2016), correlative analyses allow identifying the possible determinants of spatial genetic structures, thus providing a valuable way of assisting both landscape management and wildlife conservation (Segelbacher et al., 2010).

Depending on the complexity of the landscape, several competing hypotheses can be combined within the same analysis, such as *isolation-by-distance* (IBD) or *isolation-by-resistance* (IBR; Zeller, McGarigal, & Whiteley, 2012). These hypotheses are formulated on the basis of how specific landscape features (coded as pairwise Euclidean or cost distances) are assumed to impact genetic differentiation and, by extension, gene flow. Isolation-by-distance is notably a baseline hypothesis in landscape genetics (Jenkins et al., 2010). In organisms whose dispersal ability is spatially constrained, the IBD hypothesis depicts the expected increase in genetic differentiation (and its variance) between populations as geographical distance increases. At a given spatial scale (e.g. Bradbury & Bentzen, 2007), a significant positive correlation

between Euclidean distances and genetic distances would give support to the tested hypothesis, suggesting that dispersal movements decrease as geographic distance increases (Slatkin, 1993; but see Edelaar & Bolnick, 2012).

However, it has to be emphasised that F -statistics are not estimates of gene flow per se but are primarily measures of the balance between genetic drift on the one hand, and migration (and mutations) on the other hand: high values of pairwise F_{st} indicate that genetic variation is mostly driven by drift, whereas low values indicate that genetic variation is mostly determined by dispersal, counterbalancing the effects of drift. Genetic drift is the evolutionary process of random fluctuations in allelic frequencies naturally occurring in all populations, whatever their size, though compounded in small ones (Allendorf, 1986). If not fully compensated by gene flow, these random fluctuations should ultimately lead to genetic differentiation, especially if at least one of the two considered demes is small. In other words, genetic distances may increase because of reduced landscape connectivity (and thus dispersal) between populations, but also because of spatial variations in population sizes (Jaquiéry et al., 2011; Richardson et al., 2016; see Appendix S1a for an illustration). Spatial heterogeneity in the intensity of genetic drift alone may thus be responsible for spurious relationships between measures of genetic differentiation and landscape predictors, erroneously providing support for alternative hypotheses such as IBD or IBR and possibly leading to counterproductive management and conservation measures. This risk of spurious conclusions is all the more important when the heterogeneity in the intensity of drift is not random but follows spatial patterns (such as upstream-downstream gradients in rivers or altitudinal gradient in mountains) that may in some cases be falsely captured by alternative landscape hypotheses (Appendix S1b). In any case, quantifying the contribution of spatial heterogeneity in local drift to the variance in genetic differentiation may provide crucial insights into the actual drivers of genetic structures.

In the same way that IBD or IBR hypotheses depict the expected contribution of landscape characteristics to the variance in genetic distances, we here propose an additional hypothesis relating the influence of spatial heterogeneity in local effective population sizes (N_e) over patterns of genetic differentiation: the Spatial-Heterogeneity-in- N_e (SHNe) hypothesis. This SHNe hypothesis, based on the computation of distance-based metrics from estimates of N_e , naturally falls within the hypothesis-testing framework classically used in landscape genetics, and is aimed at quantifying the contribution of heterogeneity in population sizes in shaping spatial patterns of genetic differentiation, thus providing further insight into acting evolutionary forces. Note that we did not intend to compute a measure of genetic differentiation “corrected” for N_e (as in Relethford, 1996 or Jost, 2008), but rather to provide metrics allowing a direct quantification of the amount of variance explained by SHNe.

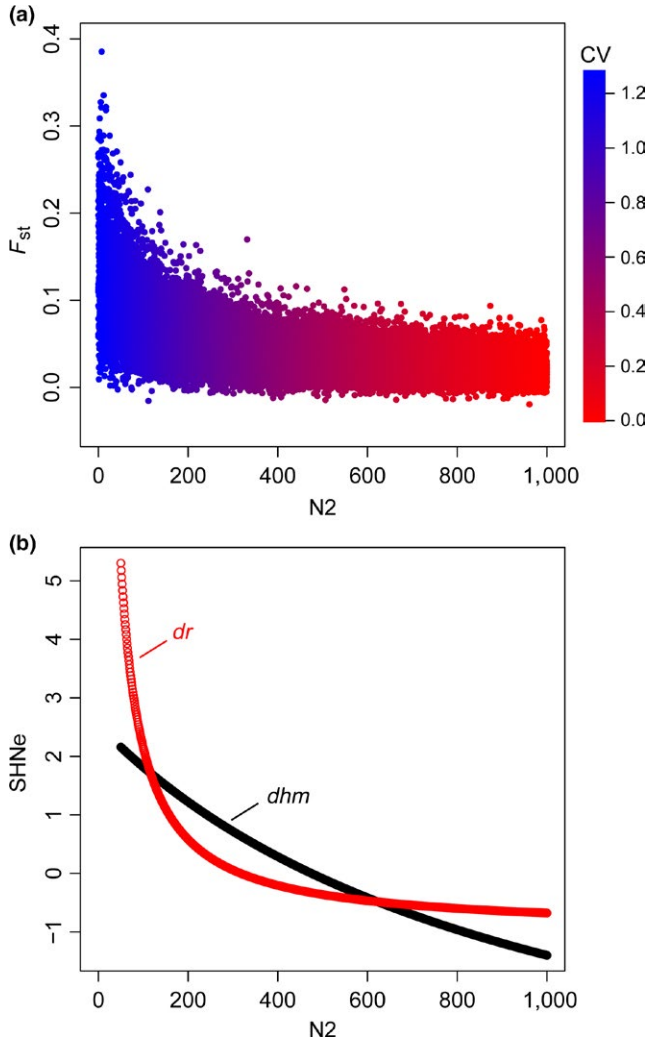


FIGURE 1 Behaviour of F_{st} (a) and each z-transformed SHNe metric (b) in a simple two-deme system as a function of effective population size N_2 (d : value of SHNe metrics; CV, Coefficient of variation)

In this study, we first described how estimates of N_e can be used to compute two distinct SHNe metrics stemming from the theoretical model of pure random genetic drift. We then investigated the influence of SHNe on the variance in F_{st} values and on the behaviour of each metric in a simple two-deme situation. We then tested the ability and efficiency of each metric to account for heterogeneity in population sizes when they are directly computed from N_e , using simulations in various genetic models of population structure. Given the inherent difficulty in estimating N_e (Wang, 2005), we used similar simulations to assess whether SHNe metrics were still efficient when computed from environmental proxies for local carrying capacities K , assuming that K is an imperfect proxy of N_e . We further assessed the efficiency of each metric in an empirical case study involving a freshwater fish species (*Gobio occitaniae*) using environmental estimates of population sizes. We finally discussed how and why these metrics should be used in landscape genetics studies.

2 | MATERIALS AND METHODS

2.1 | Distance-based metrics of SHNe

The d_i metric (for *distance based on the inverse*) was first proposed by Relethford (1991) and directly ensues from the classical formula depicting the expected loss of heterozygosity in an ideal Wright-Fisher population of constant size N over time but experiencing genetic drift (e.g. Hartl & Clark, 2007):

$$1 - F_t = \left(1 - \frac{1}{2N}\right)^t (1 - F_0) \quad (1)$$

where F_t is the fixation index at generation t . Extrapolated to a spatial context and with F_0 set to 0, the same equation can be used to depict the expected divergence of two subpopulations of size N_i relative to a founding population, in a situation where subpopulations are totally isolated, of constant size over time and with genetic drift being the only acting evolutionary force (Crow & Kimura, 1970). After transformation (Relethford, 1991), it can be shown that F_{st} between populations 1 and 2 is proportional to d_i (Appendix S2b), with:

$$d_i = \frac{1}{N_1} + \frac{1}{N_2} = \frac{N_1 + N_2}{N_1 N_2} \quad (2)$$

and N_1 and N_2 the (ideally effective) population sizes of populations 1 and 2, respectively.

The d_{hm} metric (for *distance based on the harmonic mean*) was proposed by Serrouya et al. (2012) and also directly ensues from Equation 1. In the case of fluctuating population sizes over time, it can be shown that the effective size N_e of a population is the harmonic mean of census population sizes N over time (Hartl & Clark, 2007). The harmonic mean weights smaller populations more heavily: in biological terms, it means that a single period of small population size (bottleneck) can result in a serious loss of heterozygosity. Extrapolated to a spatial context, the use of the harmonic mean entails that the smaller one of the two populations, the higher the pairwise genetic distance under a pure genetic drift model (Appendix S2a). We thus expect F_{st} between populations 1 and 2 to be proportional to d_{hm} , with:

$$d_{hm} = -\frac{2}{\frac{1}{N_1} + \frac{1}{N_2}} = -\frac{2N_1 N_2}{N_1 + N_2} \quad (3)$$

Note that we considered the opposite to the harmonic mean of N because the untransformed harmonic mean shows negative relationships with F_{st} (Serrouya et al., 2012), and thus does not behave as a classical distance-based metric. Metrics d_i and d_{hm} are inversely related and are thus expected to show different mathematical properties for the same combination of population sizes (Figure 1b; Appendix S2c).

Directly accounting for SHNe through the use of N_e is probably the most straightforward approach, but implies a major difficulty: estimating this demographic parameter, a task that may turn out to be tricky (Wang, 2005). Alternatively, we thus propose to consider the use of environmental estimates of local carrying capacities (K) as a proxy for effective population sizes. Carrying capacity reflects the upper asymptote of the logistic growth curve of a population given the distribution

and abundance of resources determined by local environmental conditions (Hanski, 1994) and can be approximated using specific environmental variables such as habitat patch size or habitat quality (e.g. Raeymaekers et al., 2008).

2.2 | Simulated datasets

For all simulations, we used a computational pipeline including the programs ABC_{SAMPLER} (Wegmann, Leuenberger, Neuenschwander, & Excoffier, 2010), SIMCOAL2.1.2 (Laval & Excoffier, 2004) and ARLSUMSTAT (Excoffier & Lischer, 2010) to simulate and analyse microsatellite genetic datasets, with 15 independent loci following a stepwise mutation model and a single mutation rate $\mu = 0.0005$ (see Appendices S8 and S9 for results with $\mu = 0.01$). Parameter values (symmetrical migration rates m , and local demes' effective population sizes N_e (in number of haploid genotypes), hereafter only denoted as N) were picked from uniform distributions using ABC_{SAMPLER} and were then used as inputs in Simcoal 2.1.2 to simulate genetic data based on a coalescent approach. In all simulations, a maximum of 30 haploid genotypes (that is, 15 diploid individuals) were sampled from each deme at the end of simulations and were used to compute pairwise F_{st} among demes using ARLSUMSTAT. di and dhm metrics were computed on the basis of demes' local carrying capacities K , with $K = N + \alpha N$. The parameter α represents the uncertainty in the estimates of effective population sizes through an environmental proxy such as habitat patch size. The estimates of N were considered as unbiased for $\alpha = 0$ (since $K = N$) or uncertain for $\alpha \neq 0$. To control for heterogeneity in local genetic drift, effective population sizes N_i were computed from a maximum population size N_{max} following $N_i = N_{max} - \gamma N_{max}$, with N_{max} fixed at 1,000 or randomly picked from a uniform distribution ranging from 100 to 1,000 (see details below) and γ a correcting parameter randomly picked from a uniform distribution ranging from 0 to 0.95 so that $N_i \leq N_{max}$. Levels of heterogeneity across effective population sizes were estimated using the coefficient of variation $CV = s/\bar{N}$, with s and \bar{N} the standard deviation and the mean of effective population sizes, respectively. All statistical analyses were performed in R 3.1.2 (R Development Core Team, 2014).

2.2.1 | Main characteristics of SHNe metrics

We first investigated the influence of SHNe on the variance in F_{st} values and on the behaviour of each SHNe metric in a simple two-deme situation. We simulated 10^5 genetic datasets with m fixed at 0.02 and α set to 0. Effective population size for deme 1 (N_1) was fixed at $N_{max} = 1,000$ (i.e. 500 diploid genotypes), while effective population size for deme 2 (N_2) was computed from N_1 following $N_2 = N_1 - \gamma N_1$. For each dataset, we computed pairwise F_{st} , di and dhm metrics, and CV . We then plotted F_{st} values as well as z-transformed di and dhm values against N_2 .

2.2.2 | Contribution of SHNe metrics to the variance in F_{st}

We then assessed the contribution of each SHNe metric to the variance in F_{st} in four complex situations differing according to both the

network structure and the migration model used for simulations (Appendix S3). We considered two different network structures: a one-dimensional 16-deme linear network and a two-dimensional 16-deme lattice network. We considered two distinct migration models: a spatially structured island model (Wright, 1943) in which m decreases with Euclidean distance following an inverse-square function, and a spatially structured stepping-stone model (Kimura & Weiss, 1964) where demes can only exchange migrants with adjacent demes. For each situation, 10,000 genetic datasets were simulated with α set to 0, m randomly picked from a uniform distribution ranging from 0.0001 to 0.3 and N_{max} randomly picked from a uniform distribution ranging from 100 to 1,000. For each simulated dataset, we computed four pairwise matrices (F_{st} , di , dhm and Euclidean distances mr , the latter acting as a simple measure of inter-deme matrix resistance) and performed multiple regressions on distance matrices (MRDM; Smouse, Long, & Sokal, 1986) between F_{st} and each SHNe metric, with mr as a unique covariate ($F_{st} = mr + di$ or $F_{st} = mr + dhm$). All variables were z-transformed to standardise parameter estimates. Commonality analysis (a variance partitioning procedure assessing the reliability of model parameters in face of multicollinearity; Prunier, Colyn, Legendre, Nimon, & Flamand, 2015; Ray-Mukherjee et al., 2014) was used to estimate the respective unique contribution (U) of each predictor to the variance in the dependent variable. The unique contribution is the part of the total variance in the dependent variable that is explained by the sole effect of the predictor being considered (mr , di or dhm). On the contrary, common contributions (shared variance among predictors) can help identify statistical suppression situations, responsible for artefactual distortions in parameter estimates (Paulhus, Robins, Trzesniewski, & Tracy, 2004; Prunier, Colyn, Legendre, & Flamand, 2017). Datasets were finally pooled according to their migration rate into 30 classes defined every 0.01 units (about 330 datasets per class). For each class, we computed the mean and the standard deviation of unique contributions of each predictor. A unique contribution was considered as negligible as soon as the dispersion around the mean included zero.

2.2.3 | Minimum level of heterogeneity accounted for by SHNe metrics

To determine the minimum level of SHNe likely to affect pairwise F_{st} , we used the same approach as described above but with a single migration rate ($m = 0.02$). For each simulated dataset, we additionally computed the coefficient of variation CV , and plotted the unique contribution of each predictor (mr , di or dhm) along with their respective standard deviation against CV .

2.2.4 | Metrics measured from an environmental proxy

Finally, we investigated the influence of uncertainty in the estimation of N_e through an environmental proxy. We used the same approach as described above with m randomly picked from a uniform distribution ranging from 0.0001 to 0.3 and the parameter α picked, independently

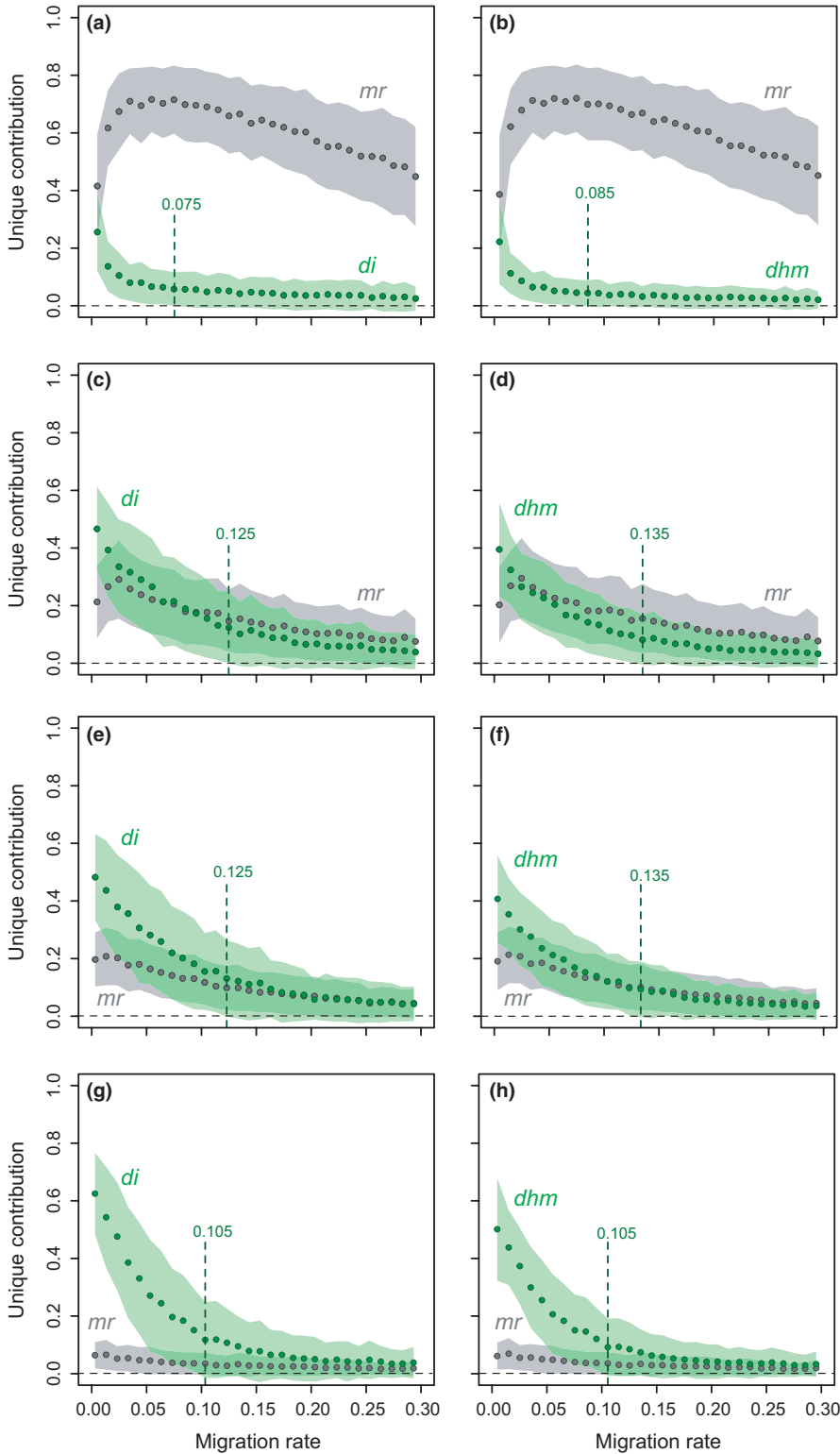


FIGURE 2 Unique contribution of metrics *mr* and *di* (left panels) or *mr* and *dhm* (right panels) as a function of the migration rate m for $\alpha = 0$. Results are for a linear network with stepping-stone migration (a, b), a linear network with spatially limited dispersal (c, d), a lattice network with stepping-stone migration (e, f) and a lattice network with spatially limited dispersal (g, h). Circles represent the average unique contribution of each variable and coloured areas represent the dispersion of unique contributions around the mean, as defined by standard deviations. Vertical dashed lines indicate the migration rate m above which the unique contribution of SHNe metrics become negligible (lower bound for $SD < 0$)

for each population, from a uniform distribution ranging from -0.9 to 0.9 (Appendix S4).

2.3 | Empirical dataset

As an empirical example, we considered neutral genetic data collected in the gudgeon (*G. occitaniae*), a small benthic freshwater fish.

Fieldwork was conducted in accordance with French laws and with the approval of the Prefecture du Lot (the administrative region where the samples were collected). A total of 562 individuals were caught in 2011 by electro-fishing in 19 sampling sites scattered along the mainstream channel of the river C  l   (Appendix S5). Pairwise F_{st} were computed between all pairs of sites using 11 microsatellite loci (Appendix S13). See Appendix S6 for details on laboratory procedures

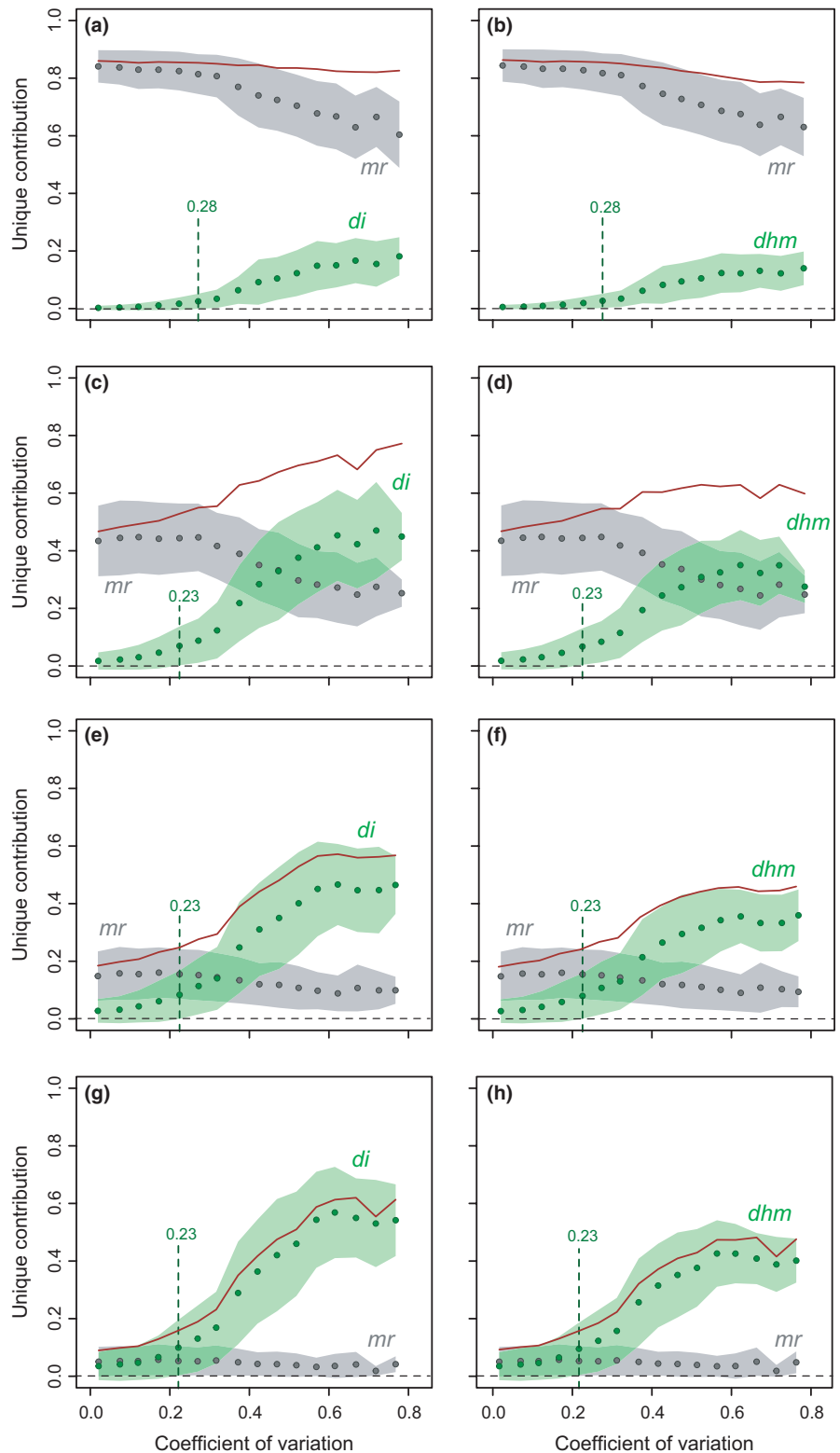


FIGURE 3 Averaged R^2 (red) and unique contribution of metrics mr and di (left panels) or mr and dhm (right panels) as a function of heterogeneity in N_e (CV, coefficient of variation) for $m = 0.02$ and $\alpha = 0$. See legend in Figure 2 for other details

and acquisition of landscape data. The riparian distance among sites was used as a measure of matrix resistance mr among sites. We first used a simple Mantel test to assess significance of the relationship. We further investigated the observed pattern using piecewise regression to identify the scale of migration-drift equilibrium, that is, the distance at which different linear relationships are observed. Estimations

of breakpoints and slope parameters, as well as 95% confidence intervals, were performed using the R-package *segmented* (Muggeo, 2008).

Given the difficulty in estimating effective population sizes in the wild, we used a proxy for local carrying capacities to estimate di and dhm . The proxies we used were the width of the river at each sampling site and the estimated home-range size of each population

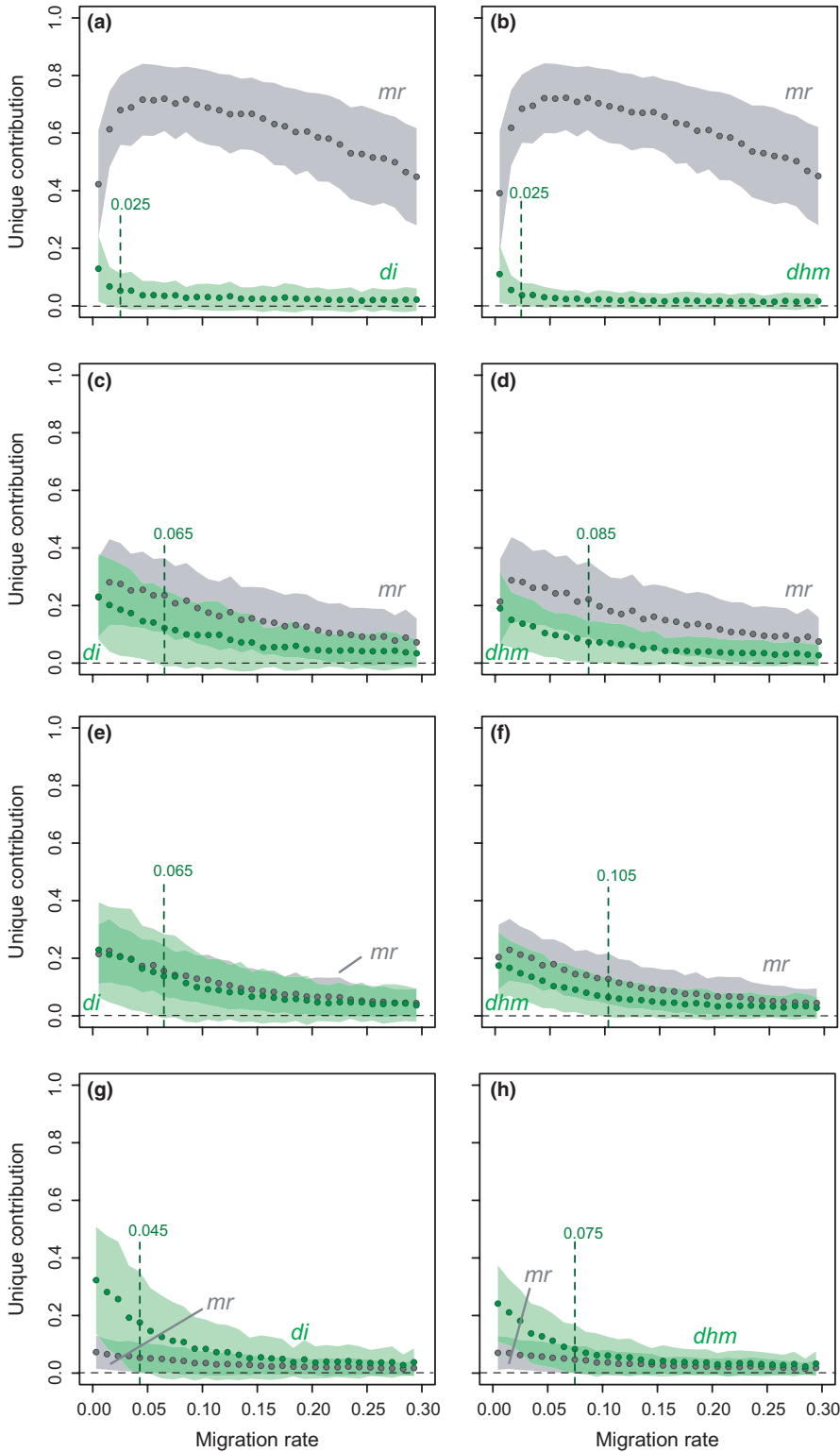


FIGURE 4 Unique contribution of metrics *mr* and *di* (left panels) or *mr* and *dhm* (right panels) as a function of the migration rate m for α ranging from -0.9 to 0.9 . See legend in Figure 2 for other details

(Raeymaekers et al., 2008). The home-range size of each deme was computed as the product of length and width of the river network (including tributaries) delimited by any downstream or upstream weir (see Blanchet, Rey, Etienne, Lek, & Loot, 2010 for a description of weirs in this river). This corresponded to the water area in which gudgeons were free to move. Matrices of pairwise *di* and *dhm* were then computed from these estimates and were independently confronted

to the matrix of pairwise F_{st} using MRDM with 1,000 permutations and with *mr* as a covariate. Commonality analyses were then used to disentangle the relative contribution of each predictor to the variance in pairwise F_{st} .

Finally, we plotted the residuals of the linear regression between F_{st} and the *di* metric (based on measures of river width) against *mr* and used a simple Mantel test to assess significance of the relationship. We

TABLE 1 Results of Mantel test (univariate model), MRDM and commonality analyses (bivariate models) performed on empirical data. For each type of environmental proxy for carrying capacities (K) and each model (Model), the table provides the model fit index (R^2) and, for each predictor (Pred), the standardised regression coefficients (beta weights β), the p -value (p) and finally unique (U), common (C) and total (T) contributions to the variance in the dependent variable

K	Model	R^2	Pred	β	p	U	C	T
Home-range	mr	.029	mr	0.171	.119	0.029	0.000	0.029
			di	0.185	.038	0.034	-0.004	0.029
	$mr + di$.040	di	0.104	.173	0.011	-0.004	0.006
			mr	0.192	.026	0.037	-0.008	0.029
River width	$mr + dhm$.127	dhm	0.313	.001	0.098	-0.008	0.090
			mr	0.283	.001	0.078	-0.048	0.029
	$mr + di$.442	di	0.652	.001	0.413	-0.048	0.365
			mr	0.219	.003	0.048	-0.018	0.029
	$mr + dhm$.396	dhm	0.607	.001	0.367	-0.018	0.348
			mr					

further investigated the observed pattern using piecewise regression to identify the distance threshold at which different linear relationships could be observed.

3 | RESULTS

3.1 | Simulated datasets

3.1.1 | Main characteristics of SHNe metrics

The aim of the first simulation study was to assess the behaviour of SHNe metrics in a very simple system in response to the variance in effective population sizes. Simulations were conducted so that any increase in heterogeneity in effective population sizes (as measured by CV) was the result of a decrease in the size of one of the two populations (N_2), the size of the other population (N_1) being held constant. As expected, the increase in heterogeneity in N_e led to an increase in the variance in F_{st} (Figure 1a): F_{st} values ranged from 0 to 0.25 for a CV of 1.2 ($N_2 \approx 5$) while they did not exceed 0.05 for a CV of 0 ($N_2 \approx 1,000$). The dhm metric showed a regular (though non-linear) increase with the increase in CV, while the di metric showed limited increase for $CV \leq 0.6$, followed by a steep increase for $CV > 0.6$ (Figure 1b). When F_{st} and SHNe metrics were scaled to range from 0 to 1, SHNe metrics followed patterns similar to that observed for F_{st} , although di tends to better fit the general F_{st} pattern than dhm (Appendix S7).

3.1.2 | Contribution of SHNe metrics to the variance in F_{st}

In the absence of uncertainty in the estimation of effective population sizes ($\alpha = 0$), both di and dhm explained a non-negligible part of the total variance in pairwise F_{st} (i.e. from 5% to more than 60%; Figure 2). Dispersion around the means further indicated that the unique contribution of SHNe metrics can be substantial, whatever the maximum population size in the system (N_{max} ranging from 100 to 1,000) and for migration rates as high as 0.135 (Figure 2). For $m < 0.135$, the unique contributions of di and dhm were the lowest for a linear network with stepping-stone migration (Figure 2a,b) and were the highest in a lattice network with spatially limited dispersal

(Figure 2g,h). In this latter case, di and dhm explained much more variance than the traditional covariate mr as soon as $m < 0.05$. In other genetic models, the unique contributions of di and dhm were as high as or slightly higher than the unique contribution of mr (Figure 2c-f). Overall, di and dhm behaved very similarly in all situations, although di showed both higher mean contribution and slightly higher dispersion around the mean than dhm .

3.1.3 | Minimum level of heterogeneity accounted for by SHNe metrics

When m was fixed at 0.02, the unique contribution of dhm and di were negligible when CV were below a value ranging from 0.23 (Figure 3c-h) to 0.28 (linear network with stepping-stone migration; Figure 3a,b). At maximum heterogeneity ($CV \approx 0.8$), unique contributions ranged from 10 to 50% (Figure 3). As previously, di and dhm behaved very similarly, although mean contribution as well as dispersion around the mean were slightly higher for di than for dhm in all situations. In most situations, the averaged model fit R^2 (the sum of unique and common contributions; Prunier et al., 2015) also increased with the increase in CV (e.g. from 10 to 60%; Figure 3g,h). The observed decrease in the unique contribution of mr as the unique contribution of SHNe metrics increases (Figure 3a-f) was not due to an increase in the common contribution of mr and SHNe metrics (data not shown), indicating that the relative support for alternative hypotheses such as IBD or IBR may be impaired in the presence of SHNe.

3.1.4 | Metrics measured from an environmental proxy

When uncertainty was included in the estimation of effective population sizes so as to mimic an environmental proxy for K (using $\alpha \in [-0.9, 0.9]$), mr showed similar patterns to those in the absence of uncertainty (Figure 4). SHNe metrics behaved similarly to situations where true estimates of N were used, although unique contributions were systematically lower (but still up to 30% for m values lower than a threshold ranging from 0.025 to 0.105). Furthermore, dispersion around the mean was generally noticeably larger for di than for dhm .

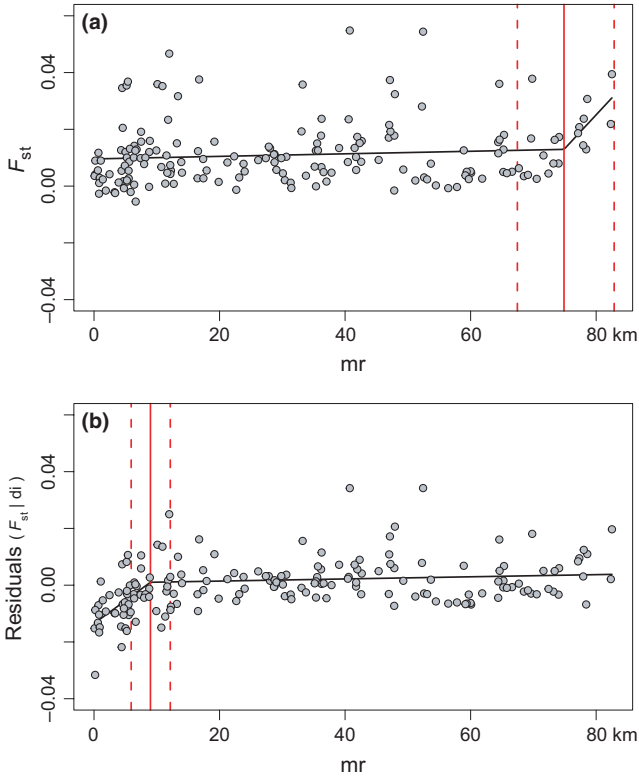


FIGURE 5 Scatterplot of pairwise F_{st} against (a) pairwise riparian distances (mr) and (b) residuals of the linear regression between F_{st} and the di metric (computed from river width) in the empirical dataset. Piecewise regression lines are in black. In red, solid vertical lines indicate the distance thresholds on either side of which different linear relationships can be observed, with 95% confidence intervals represented by dashed lines

3.2 | Empirical dataset

The pattern of IBD in *G. occitaniae* was characterised by a slightly positive though insignificant relationship between F_{st} and mr (Table 1). Piecewise regression explained a slightly higher proportion of the variance in F_{st} (6.7%) than classical linear regression (2.9%). However, the upper bound of the confidence interval around the putative breakpoint (estimated at 74.8 ± 7.7 km) was located beyond spatial extent of the study.

When K values were estimated from river width or home-range sizes, coefficients of variation were respectively 0.432 and 0.927, suggesting high SHNe in this system. On the whole, model fit indices R^2 were higher when K values were estimated from river width rather than from home-range sizes (Table 1), indicating that river width was a better proxy for carrying capacities than home-range size in this dataset. Whatever the proxy used for K , mr showed limited unique contribution to the variance in measures of genetic differentiation, with values ranging from 3.4 to 7.8% (Table 1). This variability in unique contributions of mr stemmed from collinearity with distance-based metrics of genetic drift, as revealed by common contributions C (Prunier et al., 2015): indeed, the highest unique contribution of mr ($U = 7.8\%$) was also associated with the highest negative common

contribution ($C = -4.8\%$), indicating statistical suppression, a situation responsible for an artificial boost in both the regression coefficient and its significance (Paulhus et al., 2004; Prunier et al., 2017). The observed variability in model fits (ranging from 4% to 44.2%) thus mostly ensued from the variability in SHNe metrics' unique contributions to the variance in F_{st} . When K values were estimated from home-range sizes, the effect of di was not significant (unique contribution of 1.1%) whereas dhm uniquely accounted for 9.8% of variance in F_{st} . When K values were estimated from river width, the unique contribution of di and dhm strongly increased, reaching 41.3% and 36.7% respectively (Table 1).

When exploring the relationship between residuals of the linear regression between F_{st} and the di metric (based on measures of river width) and mr , piecewise regression explained a substantially higher proportion of the variance in F_{st} (23.8%) than linear regression (12.5%). The scatterplot showed an increase in residual values up to 8.9 ± 3.3 km and a clear-cut plateau beyond this threshold (Figure 5b). This pattern suggests that, once the influence of SHNe is taken into account, the scale of IBD may be better inferred, with the divergence between populations located more than 8.9 km apart being mostly determined by drift.

4 | DISCUSSION

The possible influence of Spatial-Heterogeneity-in-Effective-Population-Sizes (SHNe) on the raw material of most landscape genetic studies, namely the variance in inter-deme measures of genetic differentiation, is rarely taken into consideration (but see Leblois, Rousset, and Estoup (2004) for an example), although it may lead to erroneous or incomplete interpretations of observed genetic patterns. Our study demonstrates that considering SHNe metrics (i.e. distance metrics measured from estimates of N_e or from environmental proxies for local carrying capacities) is a relevant approach to quantify the contribution of SHNe to the variance in pairwise measures of genetic differentiation, providing substantial information as to the actual drivers of observed patterns of genetic differentiation in addition to alternative hypotheses such as IBD. The proposed framework is based on a simple variance-partitioning procedure and does not require any complex parameterisation.

4.1 | Comparison of SHNe metrics

In a simple two-deme situation with constant migration rate, SHNe metrics exhibited patterns similar to F_{st} , thus properly rendering the influence of spatial heterogeneity in local drift on deme genetic differentiation. In more realistic scenarios, these metrics allowed quantifying the influence of SHNe on the variance in pairwise F_{st} from CV of about 25%. In other words, pairwise F_{st} in a set of three populations of mean size 100 and exchanging 2% of migrants at each generation ($m = 0.02$) may be affected by SHNe for differences in population sizes as low as 25 (e.g. $N = 75, 100$ and 125). The SHNe metrics explained up to 60% of variance in measures of genetic differentiation (and up

to 80% for a higher mutation rate; see Appendix S8) at low migration rate, but still showed substantial contributions for migration rates as high as 0.135 (0.225 for a higher mutation rate). It is however noteworthy that the amounts of explained variance strikingly depended on the configuration of the network (1D vs. 2D), the migration model (presence versus absence of long distance migration events) and the mutation rate (Appendices S8 and S9).

When applied to the *G. occitaniae* dataset, the use of di and d_{hm} allowed explaining large amounts of variance in genetic differentiation when river width was used as a proxy for local carrying capacities. Only 2.9% of variance in measures of genetic differentiation was accounted for with mr as the only predictor. On the contrary, up to 44.2% of variance was explained when either di or d_{hm} were used as additional explanatory variables. This suggests that the observed variance in measures of genetic differentiation was mostly driven by SHNe and much less by *IBD*. Interestingly, taking this effect into consideration through the use of residuals increased the scatterplot signal-to-noise ratio and revealed that genetic differentiation actually increased with riparian distance as long as populations were less than 8.9 km apart. This threshold corresponds to the scale of spatial autocorrelation in measures of genetic differentiation and may provide an upper estimate for effective dispersal distance (Anderson et al., 2010). This parameter is of particular interest as it may be used to inform conservation policies, for instance to support decisions in management of weirs or dams. Note, however, that taking the influence of SHNe into account in simulated datasets did not systematically lead to such an increase in signal-to-noise ratio (data not shown), probably because of variations in the spatial scale of simulated processes (Bradbury & Bentzen, 2007). Further studies are hence needed to identify the specific conditions under which such improvement can be achieved: for instance, the upstream-downstream increase in carrying capacities encountered in river systems is responsible for a specific longitudinal pattern of SHNe (Appendix S1b) that may be more easily captured using this procedure than in the case of random SHNe (as simulated in this study).

When uncertainty was introduced in estimates of N_e , mimicking the use of an environmental proxy such as local carrying capacities, simulations showed that both di or d_{hm} were still efficient at accounting for the influence of SHNe on the variance in F_{st} . However, d_{hm} slightly outperformed di at intermediate migration rates (i.e. for m lower than 0.1) as di 's unique contribution to the variance in F_{st} showed higher dispersion around the mean than d_{hm} . This trend was confirmed by the empirical dataset: when local carrying capacities were estimated from home-range sizes, di failed to detect any contribution of SHNe to the variance in genetic differentiation, whereas d_{hm} -though less efficient than with river width as a proxy- still explained about 10% of variance. This difference stems from the inner characteristics of each metric. Given the use of a harmonic mean in its computation, d_{hm} tends to increase as soon as one of the two demes shows a low to intermediate N_e . While di values show a rapid decrease as soon as one of the two demes shows an increase in N_e , the decrease in d_{hm} values is smoother, thus still allowing the detection of the effect of SHNe despite higher uncertainty in the estimates of N_e . The d_{hm} metric may

actually be more robust when using environmental proxies for local carrying capacities and should therefore be preferred (or compared) to di . It is noteworthy that the two metrics can easily be combined in a single model and, provided collinearity patterns are inspected (Prunier et al., 2015), the best at fitting the dataset be selected according to its unique contribution (see Appendix S10 for an illustration).

4.2 | Biologically relevant metrics

Simulations indicated that the influence of SHNe was still perceptible for migration rates up to 0.15, irrespective of the model of population structure being considered (Figures 2 and 4). Interestingly, this range of values is higher than migration rates likely to be encountered in most natural systems. Indeed, summary statistics from 49 recent empirical studies that used BAYESASS (Wilson & Rannala, 2003) to estimate interpatch migration rates (collected from a literature survey by Meirmans, 2014; see Appendix S11 and Appendix S14 for details) indicated that the median value of average migration rates was 0.023, with more than 95% of studies showing average estimates lower than 0.1 (Appendix S12). For instance, the average estimate of migration rates in *G. occitaniae* in our empirical dataset was about 0.02 (unpublished data), as estimated using GENECLASS (Cornuet, Piry, Luikart, Estoup, & Solignac, 1999). These observations suggest that SHNe is likely to be an important driver of spatial genetic variation in many empirical datasets, considering that natural variability in deme sizes is most probably far from being an exception. Because of their ability to explain substantial additional amounts of variance in observed measures of genetic differentiation, we argue that considering the use of simple distance-based metrics such as di or d_{hm} in future landscape genetic studies should thoroughly improve our understanding of observed spatial patterns of genetic variation.

4.3 | Limitations of SHNe metrics

Considering the difficulties in accurately estimating N_e from genetic data (Wang, 2005), the use of alternative estimates of population size such as observed local densities (e.g. Blanchet et al., 2010) or habitat patch size (e.g. Raeymaekers et al., 2008; Verboom, Schotman, Opdam, & Metz, 1991) to compute SHNe metrics is particularly appealing, but has yet to be considered with caution. The validity of such metrics indeed proceeds from the assumption that effective population sizes have remained constant over time (Appendix S2). This assumption theoretically limits the practical use of SHNe metrics to systems in which populations are not subject to abrupt changes in genetic drift. For populations having suffered from bottleneck events (Nei, Maruyama, & Chakraborty, 1975) or from founder effects (Ellstrand & Elam, 1993), local environmental variables such as patch size may not properly mirror the actual effective population size, thus making SHNe metrics poor predictors of spatial patterns of genetic differentiation. In these situations, estimating effective population sizes from molecular data -although a delicate exercise- probably remains the best option (see Wang, 2005 for a review synthesizing methods used to estimate N_e). It is also

noteworthy that the use of SHNe metrics, as proposed here, does not provide a definitive way of controlling for the variance in population sizes. Next important steps will be to test whether inferences of dispersal estimates could be improved by incorporating such metrics into IBD models (e.g. Rousset, 1997) and to develop new theoretical work allowing accurate IBD predictions while taking SHNe into account. More generally, integrating the demographic processes affecting N_e over time will be an important challenge to overcome so as to make landscape genetics an integrative discipline accounting for the complexity of spatially and temporally dynamic populations (Lowe & Allendorf, 2010).

5 | CONCLUSION

Habitat modifications by humans have two components (Fischer & Lindenmayer, 2007); one leading to a decrease in connectivity (fragmentation) and another leading to a decrease in habitat and resource availability (habitat loss and degradation). By reducing the size of available habitats and by decreasing connectivity among habitats, humans are rapidly making the ground more and more fertile for genetic drift, and therefore spatial heterogeneity in local drift, to become an increasingly influential evolutionary process. As the combined use of SHNe metrics and classical (IBD, IBR, etc.) landscape predictors in regression commonality analyses may substantially improve our understanding of how each process respectively contributes to observed spatial patterns of genetic variation, we believe that the time is ripe to systematically quantify the influence of SHNe on the spatial genetic structure of wild populations, in order to identify cases where genetic differentiation is actually increasing as a consequence of spatial heterogeneity in resource availability.

ACKNOWLEDGEMENTS

We thank G. Loot, I. Paz-Vinas, O. Rey and C. Veysi ere for their help on the field and in laboratory, as well as K. Saint-P e for proof-reading. We are grateful to Mark Beaumont for reading carefully a previous draft and providing comments that helped us clarify the manuscript significantly. We also thank the Office Nationale de l'Eau et des Milieux Aquatiques (ONEMA) for financial support. Data used in this work were partly produced through the technical facilities of the Centre M diterran en Environnement Biodiversit . LC was partly funded by the LABEX (Laboratoire d'Excellence) entitled TULIP (vers une Th orie Unifi e des Interactions biotiques: r le des Perturbations environnementales; ANR-10-LABX-41) and the LIA BEEG-B (Laboratoire International Associ  - Bioinformatics, Ecology, Evolution, Genomics and Behaviour; CNRS). The authors declare no conflict of interest.

AUTHORS' CONTRIBUTIONS

J.G.P. and S.B. conceived and designed the study. S.B. and V.D. collected empirical data. V.D. generated molecular data. J.G.P. performed

the simulations and analysed simulated and empirical data. J.G.P., L.C. and S.B. interpreted the results and wrote the first draft of the paper and all authors contributed substantially to revisions.

DATA ACCESSIBILITY

Simulated and empirical data: DRYAD entry <http://dx.doi.org/10.5061/dryad.j2v6q> (Prunier, Dubut, Chikhi, & Blanchet, 2017).

REFERENCES

- Allendorf, F. W. (1986). Genetic drift and the loss of alleles versus heterozygosity. *Zoo Biology*, 5, 181–190.
- Anderson, C. D., Epperson, B. K., Fortin, M.-J., Holderegger, R., James, P. M. A., Rosenberg, M. S., ... Spear, S. (2010). Considering spatial and temporal scale in landscape-genetic studies of gene flow. *Molecular Ecology*, 19, 3565–3575.
- Barton, N., & Bengtsson, B. O. (1986). The barrier to genetic exchange between hybridising populations. *Heredity*, 57, 357–376.
- Blanchet, S., Rey, O., Etienne, R., Lek, S., & Loot, G. (2010). Species-specific responses to landscape fragmentation: Implications for management strategies. *Evolutionary Applications*, 3, 291–304.
- Bradbury, I. R., & Bentzen, P. (2007). Non-linear genetic isolation by distance: Implications for dispersal estimation in anadromous and marine fish populations. *ResearchGate*, 340, 245–257.
- Broquet, T., & Petit, E. J. (2009). Molecular estimation of dispersal for ecology and population genetics. *Annual Review of Ecology, Evolution, and Systematics*, 40, 193–216.
- Cornuet, J.-M., Piry, S., Luikart, G., Estoup, A., & Solignac, M. (1999). New methods employing multilocus genotypes to select or exclude populations as origins of individuals. *Genetics*, 153, 1989–2000.
- Crow, J. F., & Kimura, M. (1970). An introduction to population genetics theory. xiv+591 pp.
- Dyer, R. J. (2015). Is there such a thing as landscape genetics? *Molecular ecology*, 24, 3518–3528.
- Edelaar, P., & Bolnick, D. I. (2012). Non-random gene flow: An underappreciated force in evolution and ecology. *Trends in Ecology & Evolution*, 27, 659–665.
- Ellstrand, N. C., & Elam, D. R. (1993). Population genetic consequences of small population-size - Implications for plant conservation. *Annual Review of Ecology and Systematics*, 24, 217–242.
- Excoffier, L., & Lischer, H. E. L. (2010). Arlequin suite ver 3.5: A new series of programs to perform population genetics analyses under Linux and Windows. *Molecular Ecology Resources*, 10, 564–567.
- Fischer, J., & Lindenmayer, D. B. (2007). Landscape modification and habitat fragmentation: A synthesis. *Global Ecology and Biogeography*, 16, 265–280.
- Guillot, G., Leblois, R., Coulon, A., & Frantz, A. C. (2009). Statistical methods in spatial genetics. *Molecular Ecology*, 18, 4734–4756.
- Hanski, I. (1994). A practical model of metapopulation dynamics. *The Journal of Animal Ecology*, 63, 151.
- Hartl, D. L., & Clark, A. G. (2007). *Principles of population genetics*, 4th ed.. Sunderland, Mass: Sinauer Associates.
- Holderegger, R., & Wagner, H. H. (2008). Landscape genetics. *BioScience*, 58, 199–207.
- Jaqu ery, J., Broquet, T., Hirzel, A. H., Yearsley, J., & Perrin, N. (2011). Inferring landscape effects on dispersal from genetic distances: How far can we go? *Molecular Ecology*, 20, 692–705.
- Jenkins, D. G., Carey, M., Czerniewska, J., Fletcher, J., Hether, T., Jones, A., ... Tursi, R. (2010). A meta-analysis of isolation by distance: Relic or reference standard for landscape genetics? *Ecography*, 33, 315–320.
- Jost, L. (2008). G_{ST} and its relatives do not measure differentiation. *Molecular Ecology*, 17, 4015–4026.

- Kimura, M., & Weiss, G. H. (1964). The stepping stone model of population structure and the decrease of genetic correlation with distance. *Genetics*, *49*, 561–576.
- Laval, G., & Excoffier, L. (2004). SIMCOAL 2.0: A program to simulate genomic diversity over large recombining regions in a subdivided population with a complex history. *Bioinformatics*, *20*, 2485–2487.
- Leblois, R., Rousset, F., & Estoup, A. (2004). Influence of spatial and temporal heterogeneities on the estimation of demographic parameters in a continuous population using individual microsatellite data. *Genetics*, *166*, 1081–1092.
- Lowe, W. H., & Allendorf, F. W. (2010). What can genetics tell us about population connectivity? *Molecular Ecology*, *19*, 3038–3051.
- Manel, S., Schwartz, M. K., Luikart, G., & Taberlet, P. (2003). Landscape genetics: Combining landscape ecology and population genetics. *Trends in Ecology & Evolution*, *18*, 189–197.
- Meirmans, P. G. (2014). Nonconvergence in Bayesian estimation of migration rates. *Molecular Ecology Resources*, *14*, 726–733.
- Muggeo, V. M. R. (2008). Segmented: An R package to fit regression models with broken-line relationships. *R News*, *1*, 20–25.
- Nei, M., Maruyama, T., & Chakraborty, R. (1975). The bottleneck effect and genetic variability in populations. *Evolution*, *29*, 1.
- Paulhus, D. L., Robins, R. W., Trzesniewski, K. H., & Tracy, J. L. (2004). Two replicable suppressor situations in personality research. *Multivariate Behavioral Research*, *39*, 303–328.
- Prunier, J. G., Colyn, M., Legendre, X., & Flamand, M.-C. (2017). Regression commonality analyses on hierarchical genetic distances. *Ecography*. <https://doi.org/10.1111/ecog.02108>
- Prunier, J. G., Colyn, M., Legendre, X., Nimon, K. F., & Flamand, M. C. (2015). Multicollinearity in spatial genetics: Separating the wheat from the chaff using commonality analyses. *Molecular Ecology*, *24*, 263–283.
- Prunier, J. G., Dubut, V., Chikhi, L., & Blanchet, S. (2017). Data from: Contribution of spatial heterogeneity in effective population sizes to the variance in pairwise measures of genetic differentiation. *Dryad Digital Repository*. <https://doi.org/10.5061/dryad.j2v6q>
- Raeymaekers, J. A. M., Maes, G. E., Geldof, S., Hontis, I., Nackaerts, K., & Volckaert, F. A. M. (2008). Modeling genetic connectivity in sticklebacks as a guideline for river restoration. *Evolutionary Applications*, *1*, 475–488.
- Ray-Mukherjee, J., Nimon, K., Mukherjee, S., Morris, D. W., Slotow, R., & Hamer, M. (2014). Using commonality analysis in multiple regressions: A tool to decompose regression effects in the face of multicollinearity. *Methods in Ecology and Evolution*, *5*, 320–328.
- Relethford, J. H. (1991). Genetic drift and anthropometric variation in Ireland. *Human Biology*, *63*, 155–165.
- Relethford, J. H. (1996). Genetic drift can obscure population history: Problem and solution. *Human Biology*, *68*, 29–44.
- Richardson, J. L., Brady, S. P., Wang, I. J., & Spear, S. F. (2016). Navigating the pitfalls and promise of landscape genetics. *Molecular Ecology*, *25*, 849–863.
- Rousset, F. (1997). Genetic differentiation and estimation of gene flow from F-statistics under isolation by distance. *Genetics*, *145*, 1219–1228.
- Segelbacher, G., Cushman, S. A., Epperson, B. K., Fortin, M.-J., Francois, O., Hardy, O. J., ... Manel, S. (2010). Applications of landscape genetics in conservation biology: Concepts and challenges. *Conservation Genetics*, *11*, 375–385.
- Serrouya, R., Paetkau, D., McLellan, B. N., Boutin, S., Campbell, M., & Jenkins, D. A. (2012). Population size and major valleys explain microsatellite variation better than taxonomic units for caribou in western Canada. *Molecular Ecology*, *21*, 2588–2601.
- Slatkin, M. (1993). Isolation by distance in equilibrium and nonequilibrium populations. *Evolution*, *47*, 264–279.
- Smouse, P. E., Long, J. C., & Sokal, R. R. (1986). Multiple-regression and correlation extensions of the mantel test of matrix correspondence. *Systematic Zoology*, *35*, 627–632.
- Tischendorf, L., & Fahrig, L. (2000). On the usage and measurement of landscape connectivity. *Oikos*, *90*, 7–19.
- Verboom, J., Schotman, A., Opdam, P., & Metz, J. A. J. (1991). European nut-hatch metapopulations in a fragmented agricultural landscape. *Oikos*, *61*, 149–156.
- Wang, J. L. (2005). Estimation of effective population sizes from data on genetic markers. *Philosophical Transactions of the Royal Society B-Biological Sciences*, *360*, 1395–1409.
- Wegmann, D., Leuenberger, C., Neuenschwander, S., & Excoffier, L. (2010). ABCtoolbox: A versatile toolkit for approximate Bayesian computations. *BMC Bioinformatics*, *11*, 116.
- Wiens, J. A. (1997). 3 - Metapopulation dynamics and landscape ecology. In I. H. E. Gilpin (Ed.), *Metapopulation biology* (pp. 43–62). San Diego: Academic Press.
- Wilson, G. A., & Rannala, B. (2003). Bayesian inference of recent migration rates using multilocus genotypes. *Genetics*, *163*, 1177–1191.
- Wright, S. (1943). Isolation by distance. *Genetics*, *28*, 114.
- Zeller, K. A., McGarigal, K., & Whiteley, A. R. (2012). Estimating landscape resistance to movement: A review. *Landscape Ecology*, *27*, 777–797.

SUPPORTING INFORMATION

Additional Supporting Information may be found online in the supporting information tab for this article.