



**HAL**  
open science

## **The well sorted fine sand community from the western Mediterranean Sea: A resistant and resilient marine habitat under diverse human pressures**

Jean-Claude Dauvin, Ali Bakalem, Alexandrine Baffreau, Claire Delecrin, Gérard Bellan, Claudio Lardicci, Elena Balestri, Rafael Sarda, Samir Grimes

### ► **To cite this version:**

Jean-Claude Dauvin, Ali Bakalem, Alexandrine Baffreau, Claire Delecrin, Gérard Bellan, et al.. The well sorted fine sand community from the western Mediterranean Sea: A resistant and resilient marine habitat under diverse human pressures. *Environmental Pollution*, 2017, 224, pp.336-351. 10.1016/j.envpol.2017.02.013 . hal-01681545

**HAL Id: hal-01681545**

**<https://hal.science/hal-01681545>**

Submitted on 14 May 2018

**HAL** is a multi-disciplinary open access archive for the deposit and dissemination of scientific research documents, whether they are published or not. The documents may come from teaching and research institutions in France or abroad, or from public or private research centers.

L'archive ouverte pluridisciplinaire **HAL**, est destinée au dépôt et à la diffusion de documents scientifiques de niveau recherche, publiés ou non, émanant des établissements d'enseignement et de recherche français ou étrangers, des laboratoires publics ou privés.

# The well sorted fine sand community from the western Mediterranean Sea: A resistant and resilient marine habitat under diverse human pressures

Jean-Claude Dauvin <sup>a,\*</sup>, Ali Bakalem <sup>b</sup>, Alexandrine Baffreau <sup>a</sup>, Claire Delecrin <sup>a</sup>, Gérard Bellan <sup>c</sup>, Claudio Lardicci <sup>d</sup>, Elena Balestri <sup>d</sup>, Rafael Sardá <sup>e</sup>, Samir Grimes <sup>f</sup>

<sup>a</sup> Normandie Univ, France, UNICAEN, UNIROUEN, CNRS UMR 6143 M2C, Laboratoire Morphodynamique Continentale et Côtière, 24 rue des Tilleuls, 14000 Caen, France

<sup>b</sup> Ecole Nationale Supérieure Agronomique (ENSA), Avenue Hassan Badi, 16200, El Harrach, Algiers, Algeria

<sup>c</sup> Université d'Aix-Marseille, IMBE, Station Marine d'Endoume, Rue Batterie des Lions, 13007, Marseille, France

<sup>d</sup> Università di Pisa, Dipartimento di Biologia, Via Derna, 56126, Pisa, Italy

<sup>e</sup> Centre d'Estudis, Avançats de Blanes, Consejo Superior de Investigaciones Científicas, Carrer d'accés a la Cala Sant Francesc, Blanes 17300, Spain

<sup>f</sup> Ecole Nationale Supérieure des Sciences de la Mer et de l'Aménagement du Littoral (ENSSMAL), BP 19, Campus universitaire de Dely Brahim, Bois des Cars, Algiers, Algeria

**Abstract:** The Biocoenosis of Well Sorted Fine Sands (WSFS) (SFBC, Sables Fins Bien Calibrés in French) is a Mediterranean community very well delimited by bathymetry (2–25 m) and sedimentology (>90% of fine sand) occurring in zones with relatively strong hydrodynamics. In this study focused on sites located along the Algerian, French, Italian and Spanish coasts of the Western Basin of the Mediterranean Sea (WBMS) we aim to compare the structure, ecological status and diversity of the macrofauna of the WSFS and examine the effects of recent human pressures on the state of this shallow macrobenthic community. We assess the ecological status and functioning of these WSFS using three categories of benthic indices: a) five indices based on classification of species into ecological groups, AMBI, BO2A, BPOFA, IQ and IP, b) the ITI index based on classification of species in trophic groups, and c) the Shannon H' index, and the Biological Traits Analysis (BTA), which is an alternative method to relative taxon composition analysis and integrative indices. Cluster analyses show that each zone show a particular taxonomic richness and dominant species. The seven benthic indices reveal that the macrobenthos of the WSFS of the four coastal zones show good or high Quality Status, except for one location on the Algerian coast (the Djendjen site) in 1997. BTA highlights the presence of three groups of species: 1) typical characteristic species; 2) indicator species of enrichment of fine particles and organic matter, and 3) coarse sand species which are accessorially found on fine sand. Finally, the WSFS which are naturally subject to regular natural physical perturbations show a high resilience after human pressures but are very sensitive to changes in the input of organic matter.

**Keywords:** Mediterranean Sea, Diversity, Benthic structure, Benthic indices, Biological Traits, Analysis Human pressures

## 1. Introduction

The Biocoenosis of Well Sorted Fine Sands (WSFS) (SFBC, Sables Fins Bien Calibrés in French, Pérès and Picard, 1964) is a Mediterranean community very well delimited by bathymetry (2–25 m)

and sedimentology (very low proportion of fine particles < 63 µm; Organic Matter < 2%; and proportion of fine sand >90%) occurring in zones with a relatively strong hydrodynamic regime. Its typology is well recognized at the scale of the western basin of the Mediterranean Sea and has been studied at numerous locations mainly along the French coast (Massé, 1970, 1971a,b,c, 1972, 1996, 1998, 2000; Guille, 1970, 1971; Grémare et al., 1998a,b, 2003; Labrune et al., 2007a, b, 2008; Sardá et al., 2014), Spanish (De-la-Ossa-Carretero et al., 2008, 2010; Sardá et al., 1999, 2000, 2001; Sánchez-Moyana et al., 2004), and Italian (Fresi et al., 1983;

\* Corresponding author.

E-mail address: jean-claude.dauvin@unicaen.fr (J.-C. Dauvin).

Somaschini, 1993; Somaschini et al., 1998; Diviacco and Somaschini, 1994; De Biasi and Aliani, 2001; Simonini et al., 2005), but also along the Algerian coast (Bakalem, 1979, 2008; Bakalem et al., 2009; Grimes, 2010; Grimes et al., 2010). Based on polychaete assemblages near the French-Spanish border, Labruune et al. (2007a) proposed a new terminology for the WSFS: Littoral Fine Sands; however, this proposal has not yet been adopted. Therefore, we conserve here the classic WSFS terminology as currently used in the European EUNIS classification ('Mediterranean communities of well sorted fine sands': <http://eunis.eea.europa.eu/habitats/2197>). Studies on this benthic habitat concern mainly the description of community structures, i.e. the species living in the WSFS community and their abundances, as well as the estimation of species or taxonomic richness in terms of diversity index, particularly the Shannon H' diversity index, and, in some cases, biomass and more rarely production (Massé, 1972). Some authors have also assessed ecological status using benthic indicators (Tataranni and Lardicci, 2010; Sardá et al., 2014). This oligotrophic community is well recognized and characterized by a relatively low number of dominant species associated with a high diversity at the scale of the western basin of the Mediterranean Sea. Moreover, over the last few decades, WSFS communities located in shallow waters have been subject to a multitude of human pressures: outfalls of treated and untreated urban waste, new constructions of dykes, dredging and recharging of beaches with sand collected in the WSFS at shallow depths (<10 m), as well as embankment of terrestrial territories for urban development, industries, harbours, airport extensions, etc. Fish trawling continues to have an impact, in spite of its prohibition at a distance of less than three nautical miles from the coastline due to the importance of this habitat for flatfishes which depend on the WSFS community for feeding. In addition, the WSFS is also changing in response to the global increase in sea temperatures leading to the warming of shallow waters in the Mediterranean Sea, which is mainly observed in summer (Nykjaer, 2009; Shaltout and Omstedt, 2014). Since the WSFS is located above the thermocline, it can be directly damaged by a greater increase of Sea Surface Temperature and the overall rise in temperature of the water masses of the Mediterranean Sea, probably in relation to global climate change.

There has been a notable increase in the number of benthic indices due to the implementation of the European Water Framework Directive (WFD) and the Marine Strategy Framework (for example, see Borja et al., 2000, 2010; Blanchet et al., 2008; Rice et al., 2012; Dauvin et al., 2016). Nevertheless, most of these benthic indices are based on the assumption that the response of macrobenthic species is linked to the increase of organic matter (OM) in the sediment, in view of 1) the increase in the abundance of tolerant and opportunistic species with increased OM and 2) on the contrary, the disappearance of sensitive species. According to this paradigm, the species are classified into five Ecological Groups (EG) (EG-I, species very sensitive to organic enrichment and disturbance, usually present only under unpolluted conditions; EG-II, species indifferent to enrichment or disturbance; EG-III, species tolerant of excess organic matter enrichment, that may occur under normal conditions, but their populations are stimulated by organic enrichment; EG-IV, second-order opportunistic species and EG-V, first-order opportunistic species, able to resist high disturbance) and their relative abundances serve to calculate benthic indices (Borja et al., 2010). Subsequently, these indices, such as AMBI and BOPA (as well as its associated modifications), were tested to detect other human pressures unconnected with the OM content (i.e. long-term changes of benthic communities under natural stressors) in areas affected by harbour construction, zones of granulate extraction, metal contamination, etc. (Borja et al., 2011, 2015; Tataranni and Lardicci, 2010; Dauvin et al., 2016). Along the same

lines i.e. the classification of macrobenthic species in terms of ecological groups corresponding to the response to pollution is mostly related to organic matter input from urban waste water outfalls, Bellan (2007) proposed an environment quality index and a Pollution-Degradation index based on the percentage of six groups of sentinel, indicative or characteristic species. However, the generalization of these OM benthic indicators to other human pressures has hindered the search for specialized indicators based on the impact of pressures acting alone, i.e. a single type of pressure leading to a particular impact.

As an alternative to analysing relative taxon composition or using integrative indices (Bremner et al., 2003, 2006), Biological Traits Analysis (BTA) takes into account the biological characteristics of the benthic species (life-history, morphological, behavioural aspects) to study the functioning of benthic communities (Verissimo et al., 2012). In this way, BTA offers a motivating approach that is complementary to benthic indicators for detecting changes in the functioning of benthic communities in response to human pressures.

This study is focused on some selected sites in the northern, south-western and eastern parts of the Western Basin of the Mediterranean Sea (WBMS) along the Algerian, French, Italian and Spanish coasts. The main aim of the paper is to compare the structure, ecological status and diversity of the macrofauna and to examine the effects of recent human pressures on the ecological status of this shallow macrobenthic community established on Well Sorted Fine Sands (WSFS). In the results section, firstly, we describe the assemblage classification and species composition of the community as well as the quality status of the analysed sites, and secondly, we perform a biological trait analysis to assess its functionality. Then, we discuss the quality status and functionality against human pressures in the regional area of analysis. Finally, we present some general concluding remarks to understand the status of the WSFS community.

## 2. Materials and methods

### 2.1. Study sites and available data

The selected data comes from studies carried out in four areas in the western Basin of the Mediterranean Sea, from sites located on the Spanish, French and Italian coasts in the north and on the Algerian coast in the south (Fig. 1).

For the French coasts, two main kinds of data are selected (Table 1). Firstly, the historic data collected in the 1970s in the area around Marseilles by Massé (1970, 1971a,b,c, 1972, 1996, 1998, 2000) in five small bays (Bandol, Faraman, Fos, Prado and Verdun) can be considered as representing the 'original communities' of the WSFS community before the increase of human activities in shallow waters along the French coast (Massé, 1996, 1998 and 2000). In the case of the Bay of Banyuls-sur-Mer, near the Spanish border, station 43 sampled in 1994 by Grémare et al. (1998a) is considered as an outlying site of the Marseilles area. Secondly, a recent survey of shallow stations along 55 km of the coast of the Camargue (from Lat. 4°13,474' E to 4°54,473' E) provides information on the state of the community under fishing pressure in the western part of the zone, in spite of being subject to regulatory prohibitions (Bellan et al., 2013) and the effects of contamination in the east coming from the Rhône River. This survey was undertaken in the framework of Natura 2000 (Labadie et al., 2011).

The data for Spain come from the Bay of Blanes (NW Mediterranean). Samples were taken at two stations located at a depth of 15 m (stations A and B; Sardá et al., 1999, 2000). The first station (A), located near the town and around 300 m off Blanes harbour, was sampled for five years (from 1992 to 1996). The second station (B)

was only sampled for two years (1992 and 1993), and was located near the mouth of the Tordera River (Table 1). The organisms retained by a 0.5 mm mesh sieve were counted and classified to the lowest possible taxonomic level for polychaetes, bivalves and echinoderms. The rest of the taxa were classified only according to major groups.

For the Algerian coast (Southwestern Mediterranean Sea), the data come from the PhD work of Bakalem (2008) and Grimes (2010) (see also Bakalem et al., 2009; Grimes et al., 2010) for historic data collected between 1979 and 1990 in the bays of Algiers, Arzew, Bejaia, Bou Ismail, Jijel and Skikda, and in 1997 and 2009 for the Djendjen area (Table 1).

For Italy (eastern part of the North-Western Mediterranean Sea), the data cover two maritime areas on the coast of Tuscany (Pisa and Grosseto) which are about 120 km apart. The area near Pisa is located on a stretch of the coast that is more intensively affected by urbanization and industrialization, although there are no major urban or industrial centres. This area is characterized by a prevailing northward longshore drift associated with the estuary of the Arno River, giving rise to freshwater, organic and nutrient inputs which can influence the coastal macrobenthic communities. Site A is located to the north, while site C is father south and site B is near the river mouth; the sites are separated by distances of thousands of metres. The Grosseto coastal area is located father south, and is characterized by weak anthropogenic pressure compared to other western Italian sandy coasts. Only a few small tourist centres and marinas are situated along this part of the coast, while there is also

an extensive terrestrial natural park. All the samples from the Pisa and Grosseto coastal areas were collected in September 2005 and in May 2006 (Table 1; Tataranni and Lardicci, 2010).

Overall, the database is made up of 306 samples, with a great disparity of information as regards number of replicates as well as seasonal sampling between the different sites, i.e. ranging from only one sample for the Bay of Banyuls to 56 sampling dates at station A in the Bay of Blanes. The database contains more than 800 taxon names, but after updating with WORMS (<http://www.marinespecies.org>; accessed on 15 December 2015), removing doubtful species and pooling the disparities due to different persons carrying out identification of the species to the genus level, the number of taxa is reduced to 521.

The abundances are normalized to the number of individuals per m<sup>2</sup>.

## 2.2. Data analysis

Assemblages of species are determined with multivariate analyses using the PRIMER 6 software (Clarke and Gorley, 2006). Hierarchical cluster analysis (HCA) with group average and multidimensional scaling (MDS) are based on Sørensen's coefficient for Presence/Absence data (concerning species richness) or the Bray Curtis coefficient with log<sub>10</sub>x transformation (concerning abundances). First of all, clustering is carried out on the total matrix, i.e. 306 samples and 521 taxa. Four samples (one from Camargue, and three from Djendjen) are excluded because they

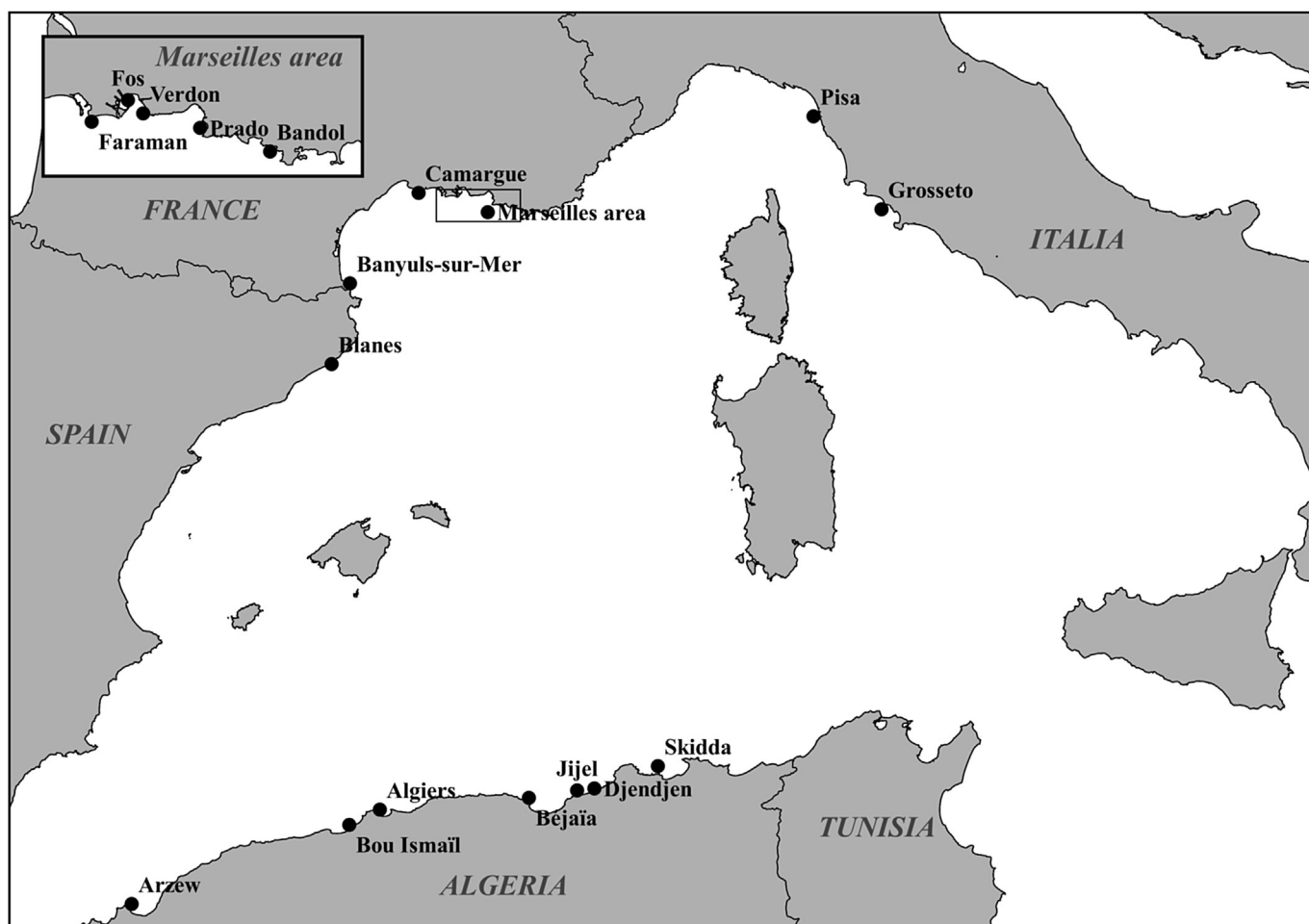


Fig. 1. Locations of the studied sites in the western basin of the Mediterranean Sea.

**Table 1**  
Main characteristics of the benthic communities and human pressures at the sampling sites. Information on the sampling design is also indicated for each sampling station.

Location of the sites	Date	Sampling's season	Stations	Number of stations or temporal observations	Depth (m)	Sampling	Origin of changes and Human pressure
Marseilles area, France	1967–1968	Spring (April to June)	Bandol Faraman Fos Prado Verdon	3 3 1 2 2	5–11	Brett's hydraulic pump	Reference state from Massé (1970, 1971a,b,c); Massé, 1971d
Camargue area, France	2011	March–April	Camargue	19	2.5–13	0.1 m <sup>2</sup> Day grab	Two main human pressures, at the east the input of the Rhône River, and in the west forbidden trawling's near the coast in shallow waters
Banyuls-sur-mer, France	1994	May	53	1	10	0.1 m <sup>2</sup> Van Veen grab	Sediment instability with a reduction of silt between reference situation in 1968 and 1994, and occurrence of high temperature (Grémare et al., 1998a,b)
Blanes (Girona, Spain)	1992–1996	All year	2	Biweekly to monthly	15	0.17 m <sup>2</sup> Van Veen grab	Station A. Urbanization (Blanes town) Station B. Riverine inputs (Tordera River)
Tuscany, Italy	2005 2005 2006 2006	September September May May	Pisa Grosseto Pisa Grosseto	18 18 18 18	5–10	0.1 m <sup>2</sup> Van Veen grab	Anthropogenic pressure due to organic and nutrients input of Arno river (Pisa) and natural heavy metals since the presence of the most important mineral deposits of the whole Tuscany (Grosseto).
Algerian coast	1984–85	One year	Algiers	4	8–10	0.1 m <sup>-2</sup> Van Veen grab (for Algiers and Jijel) and 0.1 m <sup>-2</sup> Smith and McIntyre grab in other sites	Sewage, urbanization (Fetzara, Jijel, Bou Ismail) Hydrocarbons, sewage, heavy metal, urbanization (Arzew, Bejaia, Algiers Bay)
	1985	January	Arzew	8	10–20		
	1983	December	Bejaia	6	9–25		
	1988	August	Bou Ismail	9	10–25		
	1986	July	Jijel	19	10–21		
	1990	February	Skikda	8	13–25		
Algerian coast	1997	July	Djendjen	38	5–19	0.1 m <sup>-2</sup> Van Veen grab	New harbour in a zone without industrialization and pollution
	2009	December	Djendjen	21	8–22	0.1 m <sup>-2</sup> Van Veen grab	

contain too few taxa (between four and seven), and can be statistically separated in the first analyses, especially in the cluster. In a second step, clustering (302 samples and 520 taxa, one taxa being present only in one of the four excluded samples) reveals the influence of sampling between the various locations, i.e. the separation of samples according to sites. Finally in a third step, the data are averaged per site and per year in the case of the Spanish and Italian stations used for temporal monitoring, amounting to a total of 28 situations.

In a last (step), only the ten most abundant taxa of each situation are selected and a new matrix is constructed including a total of 108 taxa for the 28 situations (considering the densities per m<sup>2</sup> of the 108 taxa). HCA and MDS are performed in order to describe and characterize these 28 situations.

### 2.3. Benthic indices

In this study, we select three categories of indices (see Appendix A for the thresholds of the different indices, taken from Dauvin et al., 2012, 2016).

The five indices used here are based on species classification in ecological groups. The AZTI Marine Biotic Index (AMBI), as developed by Borja et al. (2000), is used to analyse the proportions of five ecological groups in terms of the gradient of organic matter enrichment, and is calculated according to the guidelines of Borja and Muxika (2005). The Benthic Opportunistic Annelida Amphipods index (BO2A) and the Benthic Polychaete Opportunistic Families Amphipods index (BPOFA) are also calculated; these indices are based on the principle of taxonomic sufficiency and use the frequencies of two well-known zoological groups as indicator taxa: the opportunist annelids and the sensitive amphipods (Dauvin et al., 2016). The indices of environmental quality (IQ) and Pollution-Degradation (PD) used here are based on the relative

percentages of six groups of sentinel, indicative or characteristic species (Bellan, 2007; Appendix B). These groups of species show the sensitivity or resistance of species to pollution. The term *sentinel species* was established by Bellan (1967, 2007) for a species that, by virtue of its presence or relative abundance, 'warns' an observer about the possible impact of pressures in the nearby environment (see also Bellan et al., 1999).

One index based on trophic groups, the Infaunal Trophic Index (ITI) proposed by Mearns and Word (1982), is built on the assumption that the ecological quality of the community increases with the dominance of suspension feeders and decreases with the dominance of subsurface deposit feeders.

The index based on diversity is denoted by H' (the Shannon Index with log<sub>2</sub>; Shannon, 1948). High values of H' indicate a rich community where no dominant species are present, whereas low values are typical of poor communities or communities dominated by a few species.

We also make use of the five ECOlogical Quality Status (EcoQS) classes recommended by the WFD: *high* for unpolluted sites, *good* for slightly polluted sites, *moderate* for moderately polluted sites, *poor* for heavily polluted sites, and *bad* for extremely polluted or azoic sites.

### 2.4. Biological traits of life

A total of ten Biological Traits (BT) were selected covering different aspects of the life history, morphology and behaviour of each taxon: position on the substratum, habit, feeding mode, adult mobility, bioturbation, size, life span, developmental mechanisms, substratum affinity and ecological groups (Table 2). The choice of BTs is based on seven studies (Garcia, 2010; Paganelli et al., 2012; De Juan and Demestre, 2012; Verissimo et al., 2012; Bolam and Eggleton, 2014; Rigolet et al., 2014; La Rivière et al., 2016), in

**Table 2**

Biological traits and modalities of species selected for the biological traits analysis. Abb. Abbreviations used in the Fig. 4.

Biological trait	N°	Abb.	Modality	Definition
Larval development	1	plk	Planktotrophic	Planktonic larvae feeding on plankton
	2	lec	Lecithotrophic	Planktonic larvae feeding on yolk
	3	dde	Direct development	No planktonic larvae
Life span	1	short	Short	<2 years
	2	med	Medium	2-5 years
	3	long	Long	>5 years
Mobility	1	swim	Swimmer	Adults actively swim in water column
	2	walk	Walker	Adults capable of extensive movement at sediment surface
	3	craw	Crawler	Adults with limited movements at sediment surface
	4	burr	Burrower	Endofauna that moves in the sediment
	5	sess	Sessile	Non mobile adults (attached, limited to a tube or a burrow)
	6	bur_sw	Burrower & Swimmer	Diel migrations
	7	wlk_sw	Walker & Swimmer	Diel migrations
Living position	1	epi	Epifauna	Live at the surface of the sediment
	2	endo	Endofauna	Live in the sediment
Habit	1	tdwe	Tube-dweller	Adults builds tube
	2	bdwe	Burrow-dweller	Adults lives in burrows (temporary or permanent)
	3	free	Free-living	Adults not limited by a structure
Bioturbation	1	nobio	No bioturbation	Do not induce sediment displacement
	2	surf_dep	Surface deposition	Surface displacement
	3	up_conv	Upward conveyor	Displacement of particles from depth to surface
	4	dn_conv	Downward conveyor	Displacement of particles from surface to depth
	5	dif_mix	Diffusive mixing	Small-scale displacement
Trophic groups	1	nsdf	Non-specific deposit feeder	Feeds on particles at sediment surface and within the sediment
	2	sdf	Surface deposit feeder	Feeds on particles at sediment's surface
	3	ssdf	Sub-surface deposit feeder	Feeds on particles within the sediment
	4	suspf	Suspension feeder	Feeds on particles within the water column
	5	carn	Carnivorous	Feeds on live prey
	6	omn	Omnivorous	Generalist feeder
	7	mixt	Mixtes	Feeds on particles in the water column and at sediments' surface
Ecological groups (AMBI)	1	eg1	Sensitives	Only present in unpolluted areas
	2	eg2	Indifferent	Always present at low densities
	3	eg3	Tolerant	More abundant in slightly enriched areas
	4	eg4	Second-order opportunists	Present in unbalanced conditions
	5	eg5	First-order opportunists	Proliferate in reduced sediment
Substratum affinity	1	mud	Mud	Particles <63 µm are present or dominant
	2	smud	Sandy mud	50% to < 90% sand, mud remainder
	3	msand	Muddy sand	10% to < 50% sand; mud remainder
	4	fsand	Fine clean sand	>90% sand, median 0.125 to < 0.250 mm
	5	csand	Coarse clean sand	>90% sand, median 0.500 to < 1.000 mm
Maximal size	1	vsml	Very small	<10 mm
	2	smal	Small	10 to 20 mm
	3	med_size	Medium	21 to 100 mm
	4	larg	Large	>100 mm

accordance with their supposed importance in community functioning and their potential ability to detect the main impacts of human activities on the WSFS habitats. Each trait is divided into modalities (42 over the 10 studied traits) (Table 2). The significance of the selected BTs in terms of benthic functioning is given in Garcia (2010), Verissimo et al. (2012) and Bolam and Eggleton (2014).

According to Verissimo et al. (2012), three different types of data matrices are required: 1) 'taxa by station' (taxa abundance for each sampling station); 2) 'taxa by traits' (biological traits for each taxon) and (3) 'traits by station' (biological traits at each sampling station). Information for assigning taxa to functional traits is obtained from different sources including the PhD thesis of Garcia (2010), the WORMS site (<http://www.marinespecies.org>; accessed on 15 December 2015), the UK Marlin site (<http://www.marlin.ac.uk/biotic/>; accessed on 15 December 2015), scientific journals and the scientific expertise of the authors. When reliable information is missing, data are considered from the phylogenetic nearest neighbour taxa. The resulting 'traits by station' data matrix is then subjected to multivariate analysis.

The Biological Traits Analysis is performed according to the Rigolet et al. (2014) approach. The fuzzy coded 'species by trait' matrix is computed using a Fuzzy coded multiple analysis (FCA).

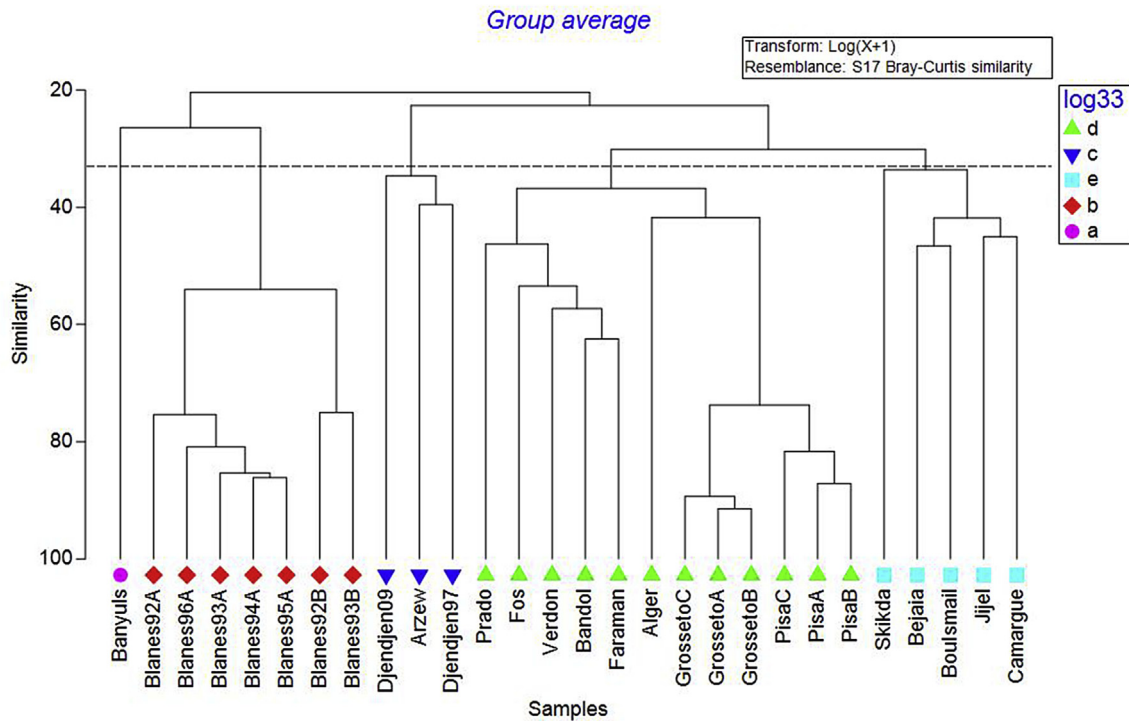
The FCA output (coordinates of taxa on the first axes) is used to plot a dendrogram applying Ward's linkage method based on Euclidean distances (Ward, 1963). Clusters of species exhibiting similar traits are then defined by selecting a given partitioning level. Finally, a biological profile is created for each cluster, showing for each trait the proportion of modalities exhibited by the cluster (Usseglio-Polatera et al., 2000).

The « species x trait » matrix is then multiplied by the abundance of the species at each station to obtain a « station x trait » matrix. This new matrix is ordinated by an FCA. A cluster analysis is then performed on the results by applying Ward's linkage method using Euclidean distances. This analysis groups stations with similar biological trait patterns. A PERMANOVA is used to test the statistical validity of the groups of stations obtained by cluster analysis.

### 3. Results

#### 3.1. The WSFS community: assemblage classification and species composition

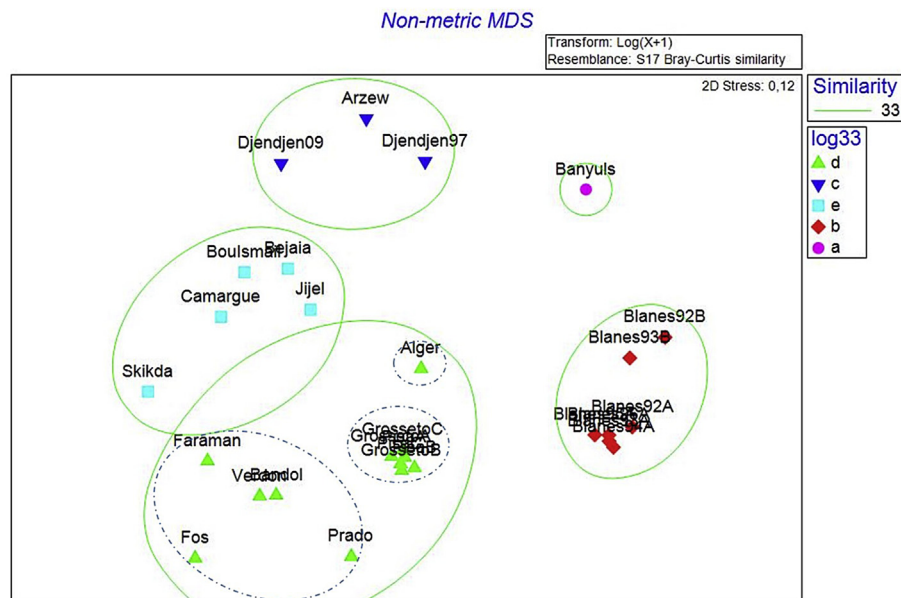
Four HCA and four MDS are performed taking into account the



**Fig. 2.** Dendrogram using group average method for clustering, showing the Bray–Curtis similarity index based on abundance [with  $\log(x + 1)$  transformation] using the 108 top ten species and the 28 situations matrix.

abundances and species richness according to the 28 selected situations, considering all the 521 species found at the different sites, and then the 108 top ten species found at each site. The results show very high levels of resemblance between the assemblages identified by the different analyses. As an example, the HCA and MDS for the matrix of abundances after a  $\log(x+1)$  transformation of the 108 top ten species and 28 situations (Figs. 2 and 3) show the identification of five groups of stations. The first group (A) is

represented by the Banyuls site, which is isolated from the other clusters. Group B includes the seven Spanish situations, while the third group (C) brings together the two Djendjen situations plus the Arzew sites (Algeria). Group D is made up of 12 situations and can be sub-divided into three sub-groups: D1 with the five historic situations in the Marseilles area, D2 with the six Italian situations and D3 with the Bay of Algiers. Group E comprises four Algerian situations plus the Camargue site, corresponding to a low faunal



**Fig. 3.** MDS ordination plot of Bray–Curtis similarities based on abundance data [with  $\log(x + 1)$  transformation] using the 108 top ten species and the 28 situations matrix; solid lines show groups identified at 33% similarity levels in the cluster analysis (Fig. 2).

**Table 3**

Summary of the results of the four cluster analyses obtained for 520 species and the 108 top ten species based on Log(x+1) transformed abundances (Bray-Curtis similarity) and Presence/Absence of the species (Sørensen index).

Transformation	Log(x+1 abundance)	Log(x+1 abundance)	Presence/Absence	Presence/Absence
Matrix (species x situations)	520 × 28	108 × 28	520 × 28	108 × 28
Group I	Banyuls	Banyuls	Banyuls	Banyuls
Group II	Blanes (7)	Blanes (7)	Blanes (7)	Blanes (7)
Group III A	Marseilles (5)	Marseilles (5)	Marseilles (5)	Marseilles (5) + Skikda (Algeria)
Group III B	Italy (6)	Italy (6)	Italy (6)	Italy (6) + Alger (Algeria)
Group III C	Alger (Algeria)	Alger (Algeria)	–	–
Group IV	Algeria (7) + Camargue (France)	Algeria (4) + Camargue (France)	Algeria (8) + Camargue (France)	Algeria (4) + Camargue (France)
Group V	–	Djendjen (2) + Arzew (Algeria)	–	Djendjen97 + Arzew (Algeria)

density at these sites coupled with low percentages of fine particles.

Table 3 summarizes the results of the four cluster analyses. For each analysis, the Banyuls and Blanes sites always contain the same assemblages, while Marseilles forms a single group which includes Skikda when using the P/A analyses and the 108 ten top species. Similarly, Italy forms a single group which includes Algiers when based on the P/A analysis and the 108 ten top species. Algiers is separated with the abundance analyses, and can be regrouped with other assemblages by using the P/A analyses. Camargue is always clustered with the Algeria situations (all seven or only four). The two Djendjen situations are grouped together with Arzew, and Djendjen97 forms a cluster alone with Arzew (analyses on the 108 ten top species). The Djendjen sites correspond to semi-enclosed areas with sedimentation of fine particles, while the shallow Bay of Arzew receives a regular input of fine particles coming from the

main Algerian 'oueds'. In both areas, the fauna is enriched by muddy species.

The enrichment of the Djendjen sites and the Bay of Arzew is clearly seen in Table 5 were the main species composition for the sites is given. This particular group does not contain the most important species that we can observe for the other formed groups where the bivalve *Spisula subtruncata* and the polychaete *Owenia fusiformis* are always present in the obtained groups being dominant and characterizing this WSFS community. Other small polychaetes, amphipods and bivalves become the accompanying species.

Banyuls is the only site characterized by a high density of the Polychaete *Ditrupa arietina* in 1994, as well as two other dominant species: the polychaete *Owenia fusiformis* and the bivalve *Spisula subtruncata*.

The Spanish site is characterized by the *Owenia fusiformis* -

**Table 4**

Values of indices measuring the Quality status (based on 28 situations and 108 top 10 species) according to the European Water Framework Directive. High in Blue, Good in green, Moderate in yellow, Poor in orange and Bad in black. For ITI, only three statuses are assessed represented by three colours: Normal in blue, Perturbed in yellow and Degraded in red. In the first column of the table, the situations are ordered following the groups recognized in the Fig. 2.

Group (Fig. 2)	Situations	H'(log2)	AMBI	BO2A	BPOFA	ITI	IQ	PD
a	Banyuls	0.788	0.092	0.000	0.001	95.445	4.175	2.825
b	Blanes92A	3.165	1.479	0.017	0.047	35.059	5.489	1.511
b	Blanes92B	3.334	0.983	0.008	0.053	66.855	5.198	1.802
b	Blanes93A	2.084	1.271	0.002	0.027	46.579	5.807	1.193
b	Blanes93B	3.539	1.286	0.025	0.115	62.249	5.205	1.795
b	Blanes94A	1.599	1.277	0.000	0.010	41.921	5.891	1.109
b	Blanes95A	3.020	1.190	0.005	0.044	43.173	5.611	1.389
b	Blanes96A	2.426	0.968	0.002	0.023	56.382	5.825	1.175
c	Arzew	3.710	1.603	0.087	0.100	33.556	4.487	2.513
c	Djendjen97	3.642	2.909	0.134	0.148	29.954	4.154	2.846
c	Djendjen09	3.618	2.372	0.088	0.125	31.738	4.801	2.476
d	Bandol	3.996	1.033	0.000	0.009	53.871	5.675	1.325
d	Faraman	2.817	0.258	0.001	0.001	41.652	5.715	1.197
d	Fos	3.095	0.625	0.000	0.000	62.403	5.395	1.406
d	Prado	1.626	1.624	0.001	0.055	78.298	5.982	1.018
d	Verdon	3.117	0.220	0.001	0.001	71.098	5.910	1.090
d	GrossetoA	3.999	1.238	0.003	0.040	39.649	5.520	1.480
d	GrossetoB	4.173	1.388	0.005	0.061	38.723	5.249	1.751
d	GrossetoC	4.289	1.680	0.019	0.091	34.256	4.941	2.059
d	PizaA	3.249	0.828	0.010	0.029	66.783	5.670	1.330
d	PizaB	2.405	0.545	0.000	0.015	78.155	5.840	1.160
d	PizaC	1.628	0.132	0.000	0.070	82.171	5.946	1.059
d	Alger	3.497	1.869	0.023	0.061	58.911	4.920	2.080
e	Bejaia	3.215	0.470	0.001	0.007	62.145	4.890	2.110
e	Boulsmail	4.173	1.229	0.004	0.007	58.430	5.523	1.477
e	Jijel	4.041	0.435	0.007	0.011	56.316	5.455	1.545
e	Skikda	4.038	0.890	0.012	0.022	36.502	5.367	1.633
e	Camargue	4.243	0.960	0.003	0.022	47.229	5.344	1.656



**Table 5**

Species (among 108 top ten species) contributing to 80% of the abundance of the five groups of stations (A to E, first column), showing stations forming the five groups.

	Species contributing to 80% (Decreasing order)		Stations
A	<i>Magelona mirabilis</i>	<i>Chaetozone</i> sp.	Alger
	<i>Scoletoma impatiens</i>	<i>Aponuphis bilineata</i>	Arzew
	<i>Chamelea gallina</i>	<i>Prionospio caspersi</i>	Camargue
	<i>Urothoe grimaldii</i>	<i>Urothoe pulchella</i>	Faraman
	<i>Spisula subtruncata</i>	<i>Nephtys hombergii</i>	Fos
	<i>Owenia fusiformis</i>	<i>Bathyporeia guilliamsoniana</i>	
	<i>Sigalion mathildae</i>	<i>Paradoneis harpagonea</i>	
	<i>Pariambus typicus</i>	<i>Euclymene oerstedii</i>	
	<i>Phoronis psammophila</i>	<i>Lumbrineris latreilli</i>	
	B	<i>Spisula subtruncata</i>	<i>Owenia fusiformis</i>
<i>Spiophanes reysii</i>		<i>Thracia phaseolina</i>	Blanes92B
<i>Ditrupa arietina</i>		<i>Ampelisca brevicornis</i>	Blanes93B
<i>Apseudopsis latreillii</i>			Banyuls
			Verdon
C	<i>Loripinus fragilis</i>	<i>Bathyporeia guilliamsoniana</i>	PisaA
	<i>Apseudopsis latreillii</i>	<i>Paradialychone filicaudata</i>	PisaB
	<i>Tellina fabula</i>	<i>Ampelisca brevicornis</i>	PisaC
	<i>Mediomastus</i> sp.	<i>Sigalion mathildae</i>	Bou Ismail
	<i>Autonoe spiniventris</i>	<i>Cylichna cylindracea</i>	Jijel
	<i>Spisula subtruncata</i>	<i>Thracia phaseolina</i>	Skikda
	<i>Prionospio caspersi</i>	<i>Perioculodes longimanus</i>	Bandol
	<i>Paradoneis armata</i>	<i>Tellina tenuis</i>	GrossetoA
	<i>Scoletoma impatiens</i>		GrossetoB
	<i>Heteromastus filiformis</i>		GrossetoC
D	<i>Lumbrineris coccinea</i>	<i>Monocorophium acherusicum</i>	Djendjen97
	<i>Amphiura chiajei</i>	<i>Lumbrineris latreilli</i>	Djendjen09
	<i>Trichobranchus glacialis</i>	<i>Owenia fusiformis</i>	
	<i>Corbula gibba</i>	<i>Mediomastus</i> sp.	
	<i>Scoletoma impatiens</i>	<i>Scolecopsis (Parascolecopsis) tridentata</i>	
	<i>Abra alba</i>	<i>Orbinia latreilli</i>	
		<i>Aricidea (Strelzovia) suecica</i>	
E	<i>Owenia fusiformis</i>	<i>Spisula subtruncata</i>	Blanes92A
	<i>Phoronis psammophila</i>	<i>Lucinella divaricata</i>	Blanes93A
			Blanes94A
		Blanes95A	
		Blanes96A	
		Prado	

*Spisula subtruncata* assemblage, as well as *D. arietina* and the bivalve *Lucinella divaricata*, while the polychaetes *Spio decoratus*, *Paradoneis armata* and *Mediomastus* sp. are among the main species.

The Marseilles sites are characterized by very low density except at Prado, along with the presence of the phoronid *Phoronis psammophila* and various different dominant species recorded at the four other historic locations such as the polychaetes *Owenia fusiformis*, *Spio decoratus*, *Scoletoma impatiens* and *Magelona mirabilis*, the amphipod *Ampelisca brevicornis*, and the bivalves *S. subtruncata*, *Chamelea gallina* and *Fabulina fabula*.

The Italian sites are characterized by very high abundance of the dominant species *S. subtruncata* at the three Pisa sites and the bivalve *Loripinus fragilis* at the three other Grosseto sites. The tanaid *Apseudopsis latreillii* is also abundant and dominant in the six Italian situations; the small polychaetes *Prionospio caspersi* and *Paradoneis armata* are also abundant at these stations.

The Algiers site is characterized by the dominance of *Scoletoma impatiens*, *S. subtruncata*, *Chamelea gallina*, *O. fusiformis* and *P. psammophila*, while the seven other Algerian sites show very low density associated with different dominant species that are not among the 20 top species of the other locations (Appendix C), such as the opportunistic polychaete *Heteromastus filiformis* at Djendjen97, where *Mediomastus* sp. is also one of the main species; *D. arietina* is

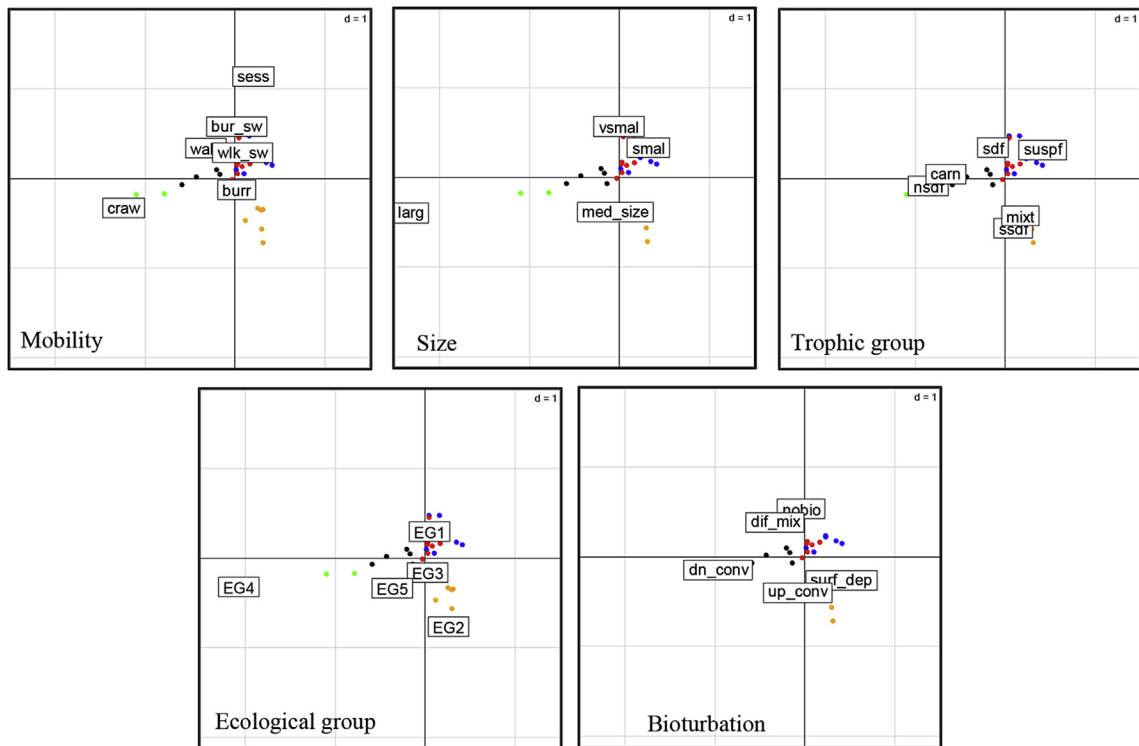
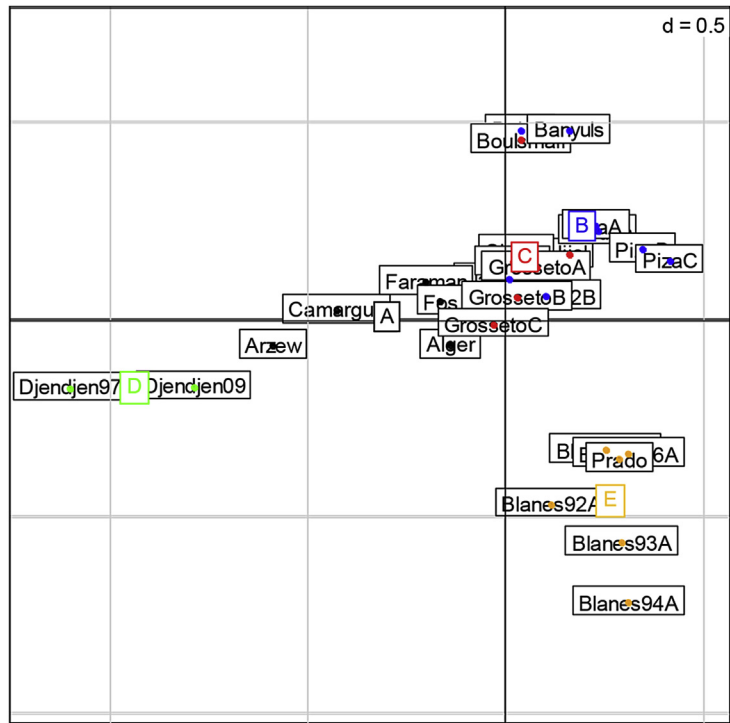
the dominant species at Bejaia; the bivalve *Fabulina fabula* and the amphipod *Ampelisca brevicornis* are the dominant species at Skikda. The polychaete *Aponuphis bilineata* is predominant at Arzew along with the opportunistic polychaete *Chaetozone* sp.

Finally, the Camargue site is characterized by very low density, as observed at most of the Algerian sites, and the dominant species are the polychaetes *Lumbrineris latreilli* and *Glycera unicornis* and the amphipod *Urothoe pulchella*.

Our results also show that each zone has a particular taxonomic richness and its specific dominant species (Table 5; Appendix C). Taking into account the mean total density of the macrobenthos per m<sup>2</sup> at the 28 situations, three categories of sites can be recognized: nine locations with very low densities <1000 ind.m<sup>2</sup> (including Fos, Camargue and all the Algerian locations except Algiers); eleven other locations with densities between 1000 and 5000 ind.m<sup>2</sup> (including Algiers, Blanes A in 1995 and 1996, Bandol, Faraman and Verdon, as well as Grosseto during three years of sampling, and Banyuls); eight locations with very high density > 5000 ind. m<sup>2</sup>, including three locations with >20,000 ind.m<sup>2</sup> (Blanes A in 1993, Pisa B and Pisa C) and the other locations are Blanes, Prado and Pisa A.

### 3.2. The WSFS community: quality status at selected sites

Table 4 gives the values of the seven indices along with the



**Fig. 4.** Ordination plot of the 28 situations by factorial correspondence analysis (FCA) based on abundance-weighted biological traits for axes 1 and 2 (upper part). Factorial maps of the five main biological traits contributing to station variability (lower part). For abbreviations, see Table 2.

**Table 6**

Biological trait profiles of species belonging to the seven functional groups (FG) on Fig. 5 (BT: Biological Traits of the 108 top ten species).

Dominant BT of the species	Species		Comments
FG1 Long lifespan	<i>Abra alba</i>	<i>Scolaricia typica</i>	Group dominated by mollusc assemblage and with species characteristic of the WSFS
Sessile	<i>Callista chione</i>	<i>Scolecopsis (Parascolepis) tridentata</i>	
Suspension feeders	<i>Chamelea gallina</i>	<i>Solen marginatus</i>	
Mud substrate	<i>Digitaria digitaria</i>	<i>Spio martinensis</i>	
	<i>Ditrupea arietina</i>	<i>Spiochaetopterus costarum</i>	
	<i>Echinocardium cordatum</i>	<i>Spiophanes bombyx</i>	
	<i>Echinocardium mediterraneum</i>	<i>Spiophanes reyssi</i>	
	<i>Ensis ensis</i>	<i>Spisula subtruncata</i>	
	<i>Galathowenia oculata</i>	<i>Tellina fabula</i>	
	<i>Loripinus fragilis</i>	<i>Tellina pulchella</i>	
	<i>Lucinella divaricata</i>	<i>Tellina tenuis</i>	
	<i>Maetra stultorum</i>	<i>Terebella lapidaria</i>	
	<i>Myriochele heeri</i>	<i>Thracia phaseolina</i>	
	<i>Owenia fusiformis</i>	<i>Trichobranthus glacialis</i>	
	<i>Pharus legumen</i>		
	<i>Phoronis psammophila</i>		
FG2 Walker	Actiniidae	<i>Exogone verugera</i>	Mainly species of coarse sediment (small polychaetes)
Crawler	<i>Amphiura chiajei</i>	<i>Myrianida prolifera</i>	
Free living	<i>Branchiostoma lanceolatum</i>	<i>Paradialychone filicaudata</i>	
No bioturbation	<i>Chone duneri</i>	<i>Parexogone hebes</i>	
Coarse sand substrate	<i>Chone infundibuliformis</i>	<i>Protodorvillea kefersteini</i>	
	<i>Cylichna cylindracea</i>	<i>Sphaerosyllis taylori</i>	
	<i>Diogenes pugilator</i>	<i>Spio decoratus</i>	
	<i>Euclymene oerstedii</i>	<i>Syllis</i> sp.	
	<i>Euclymene santandarensis</i>		
FG3 Very small	<i>Ampelisca brevicornis</i>	<i>Lembos websteri</i>	All species amphipods
Burrower-Swimmer	<i>Ampelisca sarsi</i>	<i>Monocorophium acherusicum</i>	
Walker-Swimmer	<i>Ampelisca spinipes</i>	<i>Pariambus typicus</i>	
	<i>Ampelisca tenuicornis</i>	<i>Photis longicaudata</i>	
	<i>Autonoe spiniventris</i>	<i>Corbula gibba</i>	
FG4 Conveyers (up/down)	<i>Anobothrus gracilis</i>	<i>Heteromastus filiformis</i>	Opportunistic species (found in sediment enriched in organic matter)
EG 5	<i>Aphelocheata marioni</i>	<i>Mastobranthus trinchessii</i>	
Mud and sandy mud substrates	<i>Axinulus eumyariis</i>	<i>Mediomastus</i> sp.	
	<i>Capitella capitata</i>	<i>Notomastus (Clistomastus) lineatus</i>	
	<i>Capitella minima</i>	<i>Pseudopolydora antennata</i>	
	<i>Caulerliella bioculata</i>	<i>Orbinia latreillii</i>	
	<i>Chaetozone</i> sp.	<i>Paradoneis armata</i>	
FG5 Mud substrate	<i>Aponuphis bilineata</i>	<i>Paradoneis harpagonea</i>	Non-conventional BT assemblage dominated by small polychaetes mainly from Paraonidae and Spionidae families
Up conveyers	<i>Aricidea (Acmira) catherinae</i>	<i>Prionospio caspersi</i>	
Sub-surface deposit feeders	<i>Aricidea (Strelzovia) suecica</i>	<i>Prionospio cirrifera</i>	
	<i>Aponuphis brementi</i>	<i>Prionospio malmgreni</i>	
	<i>Laonice cirrata</i>	<i>Scoloplos (Scoloplos) armiger</i>	
	<i>Magelona minuta</i>		
	<i>Magelona mirabilis</i>		
FG6 Very small	<i>Apseudopsis latreillii</i>	<i>Siphonoecetes</i>	All crustacean species including 12 amphipods characteristic of the WSFS
Burrower-Swimmer	<i>Atylus</i> sp.	<i>(Siphonoecetes) sabatieri</i>	
Walker-Swimmer	<i>Bathyporeia guilliamsoniana</i>	<i>Urothoe brevicornis</i>	
Diffusive mixing	<i>Bathyporeia pilosa</i>	<i>Urothoe elegans</i>	
	<i>Paramysis (Longidentia) helleri</i>	<i>Urothoe grimaldii</i>	
	<i>Perioculodes longimanus</i>	<i>Urothoe intermedia</i>	
	<i>Pseudocuma longicorne</i>	<i>Urothoe poseidonis</i>	
	<i>Siphonoecetes</i>	<i>Urothoe pulchella</i>	
	<i>(Centraloecetes) dellavallei</i>		
	<i>Glycera capitata</i>	<i>Lumbrineris latreilli</i>	
FG7 Walker	<i>Glycera tridactyla</i>	<i>Nephtys hombergii</i>	Large carnivorous polychaetes with coarse sand affinity
Large size	<i>Glycera unicornis</i>	<i>Scoletoma impatiens</i>	
Walker-swimmer	<i>Hilbigneris gracilis</i>	<i>Sigalion mathildae</i>	
Up conveyer	<i>Lumbrineris coccinea</i>	<i>Sigambra tentaculata</i>	
Sub-surface deposit feeders			

corresponding colours of the WFD. Most of the values indicate that the macrobenthos shows good or high Quality Status, e.g. all the values of AMBI, IQ, and PD., and all the values of BQ2A and BPOFA values except for Djendjen97 (presence of high abundance of the opportunistic polychaete *Heteromastus filiformis*, which was also present in 2009 but at lower abundance than in 1997). ITI also gives a degraded status for the Djendjen97 situation. ITI highlights the dominance of suspension feeders when the status is normal, and

deposit-feeders when the status is perturbed; thus, most of the Spanish, Algerian and Grosseto situations are classified as perturbed, in a similar way to Bandol and Faraman for the Marseilles area, while the others are classified as normal. The Shannon diversity index  $H'$  is very sensitive to the dominance of a single or a few species as observed at Banyuls (*Ditrupea arietina*), Pisa B and C (*Spisula subtruncata*), Blanes 93A, 94A and 96A (*Owenia fusiformis* and *Spisula subtruncata*), Prado (*Phoronis psammophila*) and

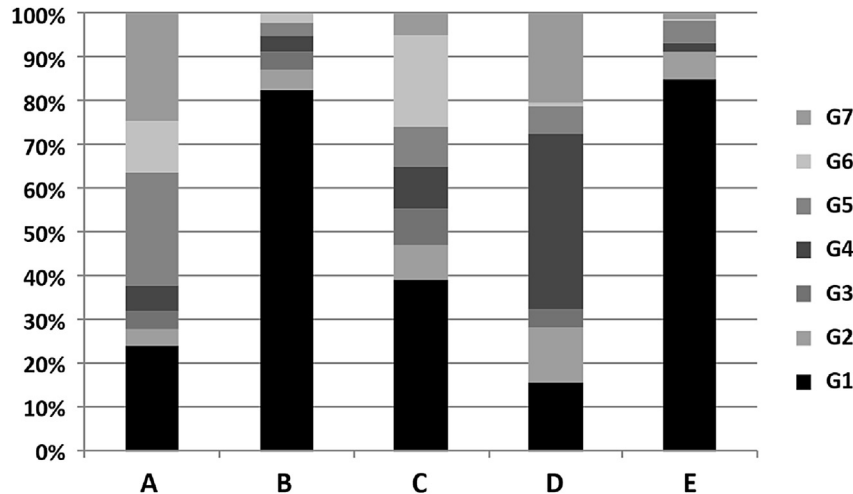


Fig. 5. Proportion of the seven functional groups (see Table 6) for each station group (see Table 5).

Faraman (*Magelona mirabilis*). Nevertheless, all these dominant species are characteristic of the WSFS and are not opportunistic; the high recorded abundances correspond to a very successful recruitment of few dominant species at these locations.

### 3.3. The WSFS community: Biological Traits Analysis (BTA)

When BTA is carried out for stations, the cluster analysis (FCA) separates five groups (Fig. 4; Table 5). Group D (two Djendjen situations) is discriminated on axis 1, being characterized by species with a long life-span and relatively low mobility (crawlers) as well as traits associated with opportunistic species (large non-specific deposit feeders; EG-IV with an affinity for mud and muddy sand). Axis 2 discriminates group E (Blanes and Prado), which is made up of a small number of species and a high proportion of EG-II species, as well as dominant species such as *Owenia fusiformis* and *Spisula subtruncata*. Groups B and C are opposed on axis 3 (not shown in Fig. 4), with group B being characterized by free-living species, whereas group C contains a higher proportion of very small sessile epifauna. Group A exhibits no specific set of traits, representing a mix of communities typical of other groups.

When BTA is done using species, the cluster analysis (not shown here) separates seven groups of species which correspond directly to its functional groups (FG) (Table 6). Axis 1 separates FG2, which is characterized by interstitial fauna (free-living species that move by walking or crawling, associated with weak bioturbation) having an affinity for coarse sand (Table 6). Axis 3 distinguishes FG7 from FG3 and FG6. FG7 is composed of large walking species with upward conveyor bioturbation. FG3 (all amphipods) and FG6 (15 crustaceans, including 12 amphipods) are characterized by very small species with high mobility (burrower/swimmer and walker/swimmer), pooling together species of the main community (WSFS). On axis 4, FG6 is distinguished from group 3 by its bioturbation mode (diffusive mixing species). Axis 3 opposes FG4 and FG1. FG4 contains high proportions of opportunists associated with bioturbation (upward and downward conveyors) (EG-V), whereas FG1 is composed of long-lived sessile suspension feeders (i.e. molluscs). Both FG1 and FG4 are characterized by an affinity for muddy substratum. FG5 is not separated from the others on any of the axes because these species do not exhibit conventional set of traits (their traits are not correlated with each other according to a specific pattern) (see Tables 4,5,6).

Group A has no dominant FG (Fig. 5; Tables 5 and 6). In addition, there is a large proportion of FG5. It seems that these stations contain a mixture of assemblages from other stations. Groups B and E are largely dominated by FG1 (over 80% of the abundance), which is one of the groups of the main community (WSFS). However, group E contains a higher proportion of FG4, indicating organic enrichment and the presence of FG2 (coarse sand species). Group C combines stations dominated by WSFS species (molluscs and the amphipods *Urothoe* spp., GF1 and FG6). Group D is dominated by FG4 (opportunistic group), suggesting that these stations have undergone organic enrichment. In addition, they also contain a high proportion of FG7 (carnivorous Polychaeta), which could be explained by the larger proportion of their prey item (FG4 species).

## 4. Discussion

### 4.1. The WSFS community: assemblage classification and species composition

As stressed previously by numerous authors, the soft-bottom communities of the Mediterranean Sea are characterized by their high species richness (Bakalem, 2008; Grimes, 2010 and references therein). In this study, the diversity of chosen sites and the long-term monitoring of certain sites increased the probability of sampling a large collection of species; in this way, the species composition of our sites reaches a total of 521 species. This value is high for a single shallow community that is known to show moderate species richness (see the publications of Massé in the 1970s). Nevertheless, our overall list contains several categories of species:

- Species characteristic of the WSFS, which can be found in what can be considered 'a reference state' i.e. the lists of Massé's stations sampled in the late 1960s. Those species are numerically dominant at one or several locations (see Appendix C), including the polychaetes: *Owenia fusiformis*, *Prionospio caspersi*, and *Ditrupa arietina*; the bivalves: *Spisula subtruncata*, *Lucinella divaricata*, *Thracia phaseolina*, *Tellina fabula*, and *Chamelea gallina*; the amphipods *Ampelisca tenuicornis* and *A. brevicornis* (which were also described as dominant in Bayed and Bazairi, 2008), and the tanaid *Apseudopsis latreillii* for the Italian sites.

- Species which are characteristic of one site (locality) showing some differences with fauna from surrounding regions, such as the polychaetes *Aricidea (Acmira) catherinae*, *Spiophanes reysii*, and the bivalve *Loripinus fragilis* along the Italian coast, the amphipod *Ampelisca sarsi* and the ophiurid *Amphiura chiajei* along the Algerian coast, the polychaetes *Aricidea (Strelzovia) suecica* et *Paraexogone hebes* and the bivalve *Ensis ensis* along the Spanish coast and the polychaete *Euclymene oerstedii* along the French coast.
- Species which respond to an increase in fine particles and organic matter in the sediment (tolerant and opportunistic species belonging to EG-III, EG-IV and EG-V which are not found on WSFS under normal conditions). This increase of fine particles on the WSFS is well documented (see Bakalem, 2008; Grimes, 2010; and also Bayed and Bazairi, 2008); it corresponds to natural river discharges in some areas such as the Bay of Algiers or recent human modifications that increase the sedimentation of fine particles on the sea bottom as in the Djendjen area.
- Species which are numerically dominant at one or several locations (see Appendix C), including the polychaetes: *Owenia fusiformis*, *Prionospio caspersi*, and *Ditrupa arietina*; the bivalves: *Spisula subtruncata*, *Lucinella divaricata*, *Thracia phaseolina*, *Tellina fabula*, and *Chamelea gallina*; the amphipods *Ampelisca tenuicornis* and *A. brevicornis*, and the tanaid *Apseudopsis latreillii* for the Italian sites. This latter species also shows high abundances along the Mediterranean Spanish coast (Valencia) (De-la-Ossa-Carretero et al., 2010), but its response to increased organic matter remains a matter of debate. Dense populations of the polychaete *Ditrupa arietina* have recently been observed on the French and Spanish Catalan coast, with high abundances recorded at Banyuls-sur-Mer and in the Blanes area, as well as at Bejaia and Arzew along the Algerian coast. For example, the species was rare or absent during the late 1960s (Guille, 1970, 1971). Following a peak of abundance in the 1990s and up until the middle of the years 2000 (Grémare et al., 1998b; Labruno et al., 2007a,b; Sardá et al., 1999; 2001), the populations decreased dramatically (Labruno et al., 2012; Romero-Rodriguez et al., 2016). In his review of the occurrence and ecology of dense populations of *Ditrupa arietina*, Hartley (2014) pointed out that dense populations are found in areas where the sea bed is periodically disturbed by internal wave action. The WSFS are known to be located in shallow waters under high-energy hydrodynamic conditions, so any rapid increase in the population of *D. arietina*, which is an annual species, could be linked to an episode of higher energy.

Therefore, our results show that each zone has a particular taxonomic richness and specific dominant species (Table 5).

#### 4.2. Quality status of the WSFS in the western part of the Mediterranean Sea

Apart from Djendjen, all the situations show a high or good Ecological Status (Table 4). WSFS occur under high-energy hydrodynamic conditions and are relatively resistant to human pressures, while anthropogenic fine particles and OM are probably prevented from accumulating because of the hydrodynamic regime. However, some tolerant and opportunistic species could be present due to temporary inputs of nutrients from rivers, oueds or urban discharges. All the indices yield the same patterns; moreover, H' is sensitive to dominant species and shows lower values in the case of high abundances due to one or two strongly dominant species such as at Banyuls, site A at Blanes in 1994, the Massé Prado station and Pisa C. The benthic indices appear unable to discriminate between

locations or between historic and present-day compositions of the macrofauna in such shallow habitats.

Furthermore, abundance values and their response to environmental change appear to be better indicators of human pressures on such shallow macrobenthic habitats. As shown in our data, there are extreme differences of abundances between sites with very high abundances of *S. subtruncata* at both Spanish and Italian sites. At 'original communities', Bou Ismail Bay and other Algerian sites, Prado or Camargue, the abundances are <1000 ind.m<sup>2</sup>; there is probably little input of nutrients and low Primary Production at these localities. The main characteristic of the WSFS is their low population density but also an equitable distribution of individuals amongst species, with values ranging from 200–300 to 1000 ind.m<sup>2</sup>. In a long-term comparison (1967–1968; 1996) of the benthic composition of two stations in Prado Bay, Massé (1996, 1998) showed that the improvement in water quality of the bay had a positive effect on the species richness of the WSFS, but the drastic reduction of freshwater and organic matter inputs had a negative effect on abundances and biomass of the macrobenthos. Massé (2000) compared the general patterns of the macrofauna of the WSFS between 1966 and 1996 at five sites, respectively Faraman, Fos, Verdon, Prado and Bandol. He showed that the abundance of the macrobenthos was mainly sensitive to the effect of well identified human actions, such as the deviation of the river in Prado Bay and the increase of nutrient inputs from the Rhône at the nearby Faraman site. He also highlighted a decline of abundance of crustaceans at the studied sites, especially amphipods, and considerable fluctuations and alternations in the relative abundance of molluscs and echinoderms.

Thus, the high abundances are mainly due to two phenomena: 1) high settlement of a very limited number of species such as the bivalve *Spisula subtruncata* (EG-I, life-span of 2 y), the polychaetes *Owenia fusiformis* (EG-II, life-span of 2–5 y) and *Ditrupa arietina* (EG-I, life-span of 2 y), and the phoronid *Phoronis psammophila* (EG-II, life-span of 2 y); 2) changes in freshwater inputs due to natural hydrological variations controlled by climatic factors, or human actions such as improvements in water quality or the diversion of rivers. For example, the abundances of WSFS in the Bay of Algiers are higher than those observed along other parts of the Algerian coast, owing to the freshwater inputs of the main oueds and urban discharges into the Bay of Algiers.

#### 4.3. Biological traits of life

An approach allowing us to classify the situations in a different way, in terms of Traits of Life, shows a clear separation of the Djendjen data points from the other sites. This is highlighted by the abundances of species which reflect the presence of tolerant and opportunistic species having specific Traits of Life. The Italian and Spanish stations with high abundances of *Owenia fusiformis* and *Spisula subtruncata* can also be distinguished by analyses of the biological traits of life (Fig. 4).

The subdivision of the species into seven functional groups is of great interest in this context (Table 6).

The first group distinguishes species that are characteristic of the WSFS, including numerous bivalves such as *Callista chione*, *Chamelea gallina*, *Spisula subtruncata* and *Tellina fabula*, as well as the polychaete families Oweniidae and Spionidae; most of these dominant and characteristic taxa are suspension feeders that underline the fact that the fauna in such benthic hydrodynamic environments depend on the quality of the water column. Pristine WSFS occur mainly in oligotrophic zones with low macrofauna abundances (Massé, 1996, 1998, 2000). As a response to the eutrophication of the coastal zone, mainly due to the increase of nutrients supplied by freshwater inputs, there is an enrichment of

the fauna with the introduction of indicative sentinel species and an increase in the abundance of macrofauna (Bellan, 1967; Bakalem et al., 2009; Bayed and Bazairi, 2008; Massé, 2000).

Groups FG2 and Fg7 are characterized by coarse sand species mainly comprised of polychaetes of small size (FG2) or large size (FG7). Groups FG3 and FG6 are made up of crustaceans (especially the amphipods *Ampelisca* spp. *Bathyporeia* spp. and *Urothoe* spp.) which are characteristic of WSFS, with high mobility and able to swim in the water column at night (diurnal vertical migration). These species are also sensitive to pollution (Dauvin et al., 2012, 2016). Group FG4 is characterized by opportunistic species found in sediments enriched in organic matter, probably indicating a temporary or permanent organic pollution. It is clear that these species are absent at stations with low macrofauna abundances, but are well represented at the Djendjen site. Finally, group FG6 is comprised of 14 polychaetes found mainly in muddy fine sand and which occur in areas enriched by fine particles. In this way, the analyses based on Biological Traits of Live highlight the presence of three groups of species: i) typical characteristic species of WSFS such as groups FG1, FG3 and FG7; ii) indicator species reflecting enrichment of fine particles and organic matter (groups FG4 and FG5), and iii) coarse sand species which are accessorially found on fine sand (groups FG2 and FG7).

#### 4.4. Concluding remarks

Our study is focused on the shallow Biocoenosis of Well Sorted Fine Sands (WSFS) in zones with relatively high-energy hydrodynamic conditions along the Algerian, French, Italian and Spanish coasts of the western Basin of the Mediterranean Sea. We compare the structure, ecological status and diversity of the macrofauna of the WSFS, with a view to examining the effects of human pressures on the state of this shallow macrobenthic community. In spite of several types of pressure in the four studied areas (Table 1), such as river inputs, pollution by urbanization, heavy metals and hydrocarbons, only one site at Djendjen along the Algerian coast shows a low-quality status. All the other situations show a good or a high quality status according to the seven benthic indices employed in this study. These indices appear unable to discriminate the response of WSFS communities arising from human pressures; by contrast, the total abundances of the macrofauna could serve as an indicator of dysfunction, since an increase of abundances of opportunistic species could be due to the influence of river and organic matter inputs. The change from oligotrophic (normal situation) to eutrophic conditions (with enhanced nutrient and organic matter inputs) is followed by an increase of abundances and the presence of sentinel or indicative species reflecting organic pollution. Moreover, this situation can be reversible as shown by Massé (1996, 1998) in the case of Prado Bay in the Gulf of Marseilles, with a decrease in the total abundance of macrofauna after the cessation of continual freshwater inputs or in the case of the Besos River off Barcelona associated with the reduction of organic inputs (Cardell et al., 1999). This indicates that the WSFS communities have a high resilience. This ecological property has been highlighted in the context of sand extraction in shallow subtidal zones of Algeciras Bay (southern Mediterranean Sea, Spain), in the northern Adriatic Sea (Simonini et al., 2005) and along the Catalan coast (Sardá et al., 2000). In Algeciras Bay, surveys conducted over five years following dredging operations showed that the macrofauna was beginning to be re-established only one month after the cessation of dredging. After two years, there was a confusing biological impoverishment, while after four years, the population was largely re-established. For the Northern Adriatic Sea (Simonini et al., 2005), one year after the extraction, the recolonization of the macrofauna at the impacted stations was at an advanced stage, while on the Catalan

coast, two years after the cessation of dredging activities, the abundances recovered but biomasses were still high (Sardá et al., 2000). Similarly, in a study of the effect of sediment discharge (100,000 m<sup>3</sup> over a period of one week) on benthic communities in the Tyrrhenian coastal zone, including the shallow WSFS habitat, no changes were observed after the dumping operations, even though it took place only about 5 nautical miles from the shallow biocoenosis (De Biasi and Aliani, 2001). As discussed above, this habitat is located in shallow waters associated with high-energy environments that are continually subjected to natural physical perturbations. This ensures the selection of species adapted to living in clean sand intensely reworked by a combination of strong wave action and swell, implying that the community is able to recolonize this environment rapidly after the cessation of anthropogenic pressures. This high resilience maximizes the capacity of the characteristic species of this biocoenosis to recover rapidly after undergoing pressures. The high capacity of recovery of Mediterranean WSFS contrasts with the low resilience of typical Mediterranean communities under the combined effects of anthropogenic and climatic factors, such as observed in the case of *Posidonia oceanica* meadows (Bourcier, 1996) and coralligenous reefs (Gatti et al., 2015). In agreement with Gatti et al. (2015), who criticized the use of coralligenous reef state as an indicator of water quality, because it responds primarily to physical pressures (sedimentation, temperature, mechanical damage, etc.), our study on the WSFS not only shows similar evidence but also a high resilience after the cessation of anthropogenic pressures.

However, our analyses only take into account of the abundance of the species, and are mainly concerned with the dominant species. It is well known that shallow, non-vegetated, soft-bottom habitats of the western Mediterranean are generally poor in biomass and show a low productivity (1–3 g dry weight m<sup>-2</sup>) (Ben-Tuvia, 1983), except near large rivers (e.g., the Rhone or the Ebro) or major cities (e.g. Marseilles or Barcelona), where values of up to 18.4 g dry weight m<sup>-2</sup> have been recorded (Massé, 1972 for the Gulf of Fos, France), or in enclosed areas or coastal lagoons [157.2 g dry weight m<sup>-2</sup> for the Camargue area (Massé, 1972), and 66.0 g dry weight m<sup>-2</sup> in Alfacs bay of the Ebro Delta (Martin et al., 2000)] where biomass and productivity tend to increase. Previous studies have systematically documented the dominance of annelid polychaetes, as well as bivalve species, both in terms of abundance and biomass of species. More recent studies [Albertelli et al., 1993 in the Ligurian Sea (Italy); Grémare et al., 1998a, 1998b, in the bay of Banyuls (France); Sardá et al. (1999) in the Cove of Portbou (Spain)] propose that most of the macroinfauna remains dominated by increasing numbers of small polychaetes which disappear a few months after their settlement. However, the biomass of large bivalves is lower, and there is a clear tendency for a decrease in the mean individual macroinfaunal biomass. This shift probably reflects a habitat that is being continuously stressed by anthropic disturbances (see Sardá and Fluvià, 1999 for a review of the Costa Brava). The evidence from the bay of Blanes suggests that the absence of large organisms could be associated with the continuous disturbance and stress caused by bivalve fisheries in this area. This selective pressure on larger invertebrates means that the populations of the affected assemblages are mainly structured by annual species, which may explain the recurrent pattern found in their seasonal dynamics (Sardá et al., 1999). We consider that, at present, this could be a general pattern in shallow soft-bottom habitats of the north western Mediterranean coastal zones, which could be analysed in the future using the biomass data available for this part of the Mediterranean.

## Acknowledgements

The authors thank the MEDISCAN programme for the Camargue Data, the Italian Research was funded by University of Pisa (Lardicci 308/2004) with the technical help of the Environmental Protection Regional Agency of Tuscany (ARPA Toscana). The authors thanks M. Carpenter for the English revision, and both reviewers for their very useful comments and suggestions on the first draft of this paper.

## Appendix A

Threshold values between the several ecological statuses considered for the selected benthic indicators: AMBI, BO2A, BPOFA, H', IQ, PD, and ITI (see [De-la-Ossa-Carretero and Dauvin, 2010](#); [Dauvin et al., 2012, 2016](#); [Bellan, 2007](#)).

	AMBI	BO2A	BPOFA	H'	IQ	PD	ITI classes	ITI values
High	0–1.2	0.000–0.025	0.000–0.030	$+\infty$ –4.00	>5	1.00–2.00		
Good	1.2–3.3	0.025–0.129	0.031–0.125	4.00–3.00	4.00–5.00	2.00–3.00	Normal	60–100
Moderate	3.3–4.3	0.130–0.198	0.126–0.186	3.00–2.00	3.00–4.00	3.00–4.00	Perturbed	30–60
Poor	4.3–5.5	0.199–0.254	0.187–0.236	2.00–1.00	2.00–3.00	4.00–5.00	Degraded	0–30
Bad	5.5–7.0	0.255–0.301	0.237–0.301	1.00–0.00	1.00–2.00	>5		

## Appendix B

Groups of species used for measuring the Environmental Quality Index (IQ) and the Pollution-Degradation Index (PD) (From [Bellan, 2007](#)).

Categories of species	Ind. Qual.	Ind. Pollu-Degra
IP1: Pollution indicative rank 1 (internal polluted sub zone) species	1	6
IP2: Pollution indicative rank 2 (external polluted sub zone) species	2	5
Opp. 1. Opportunistic rank 1, 'sentinel' of the subnormal zone species	3	4
Opp. 1. Opportunistic rank 2, large ecological distribution species	4	3
Sed. Quality of sediment indicative species	5	2
Bioc. Characteristics of biocenose species	6	1

Ind. Qual. =  $(1 \times \%IP1 + 2 \times \%IP2 + 3 \times \%Opp1 + 4 \times \%Opp2 + 5 \times \%Sed. + 6 \times \%Bioc.)$ .

Poll.-Degr. =  $(6 \times \%IP1 + 5 \times \%IP2 + 4 \times \%Opp1 + 3 \times \%Opp2 + 2 \times \%Sed. + 1 \times \%Bioc.)$ .

## Appendix C

Total number of individuals for the 20 top species, with their numerical rank in the 28 situations, with mean total density of the macrobenthos per m<sup>2</sup> in the 28 situations. > 20 indicates that the species is not among the 20 top species and 0 indicates the absence

of the species at the site. (Ban: Banyuls-sur-Mer; BI92A, BI92B, BI93A, BI93B, BI94A, BI95A, BI96A: Blanes, years 1992–1996, sites A & B; Fara: Faraman; Verd: Verdon; GrA, GrB, GrC: Grosseto, sites A, B & C; Dj97, Dj09: Djendjen, years 1997 & 2009; Ismai: Bou Ismail; Cama: Camargue).

	Total	Ban	BI92A	BI92B	BI93A	BI93B	BI94A	BI95A	BI96A	Bantdol	Fara	Fos	Prado	Verd	GrA	GrB	GrC	PisaA	PisaB	PisaC	Alger	Arzew	Dj97	Dj09	Bejata	Ismail	Jijel	Skikda	Cama		
<i>Spisula subtruncata</i>	59,230	3	2	1	2	1	2	3	2	33	20	0	12	1	4	5	9	1	1	2	28	0	>20	>20	>20	0	2	>20	>20		
<i>Owenia fusiformis</i>	37,690	2	1	3	1	>20	1	1	1	16	13	13	5	>20	>20	18	18	3	13	6	17	>20	5	17	18	20	0	5	5		
<i>Phoronis psammophila</i>	12,992	0	0	0	0	0	0	0	8	26	30	1	>20	>20	0	0	0	12	9	10	5	0	0	>20	>20	0	0	0	0		
<i>Spiophanes reysi</i>	5570	0	0	0	0	0	0	0	0	0	0	0	0	0	0	20	>20	0	2	0	0	0	0	0	0	0	0	0	0	0	
<i>Lucinella divaricata</i>	5015	>20	3	>20	3	17	3	2	3	>20	>20	11	>20	15	0	0	0	0	0	>20	>20	0	0	0	0	0	>20	>20	0	0	
<i>Ditropa arietina</i>	4837	1	>20	2	19	6	5	7	20	0	0	0	0	0	0	0	0	0	0	0	3	0	0	1	>20	0	0	0	0	0	
<i>Apeudopsis tarreillii</i>	4564	>20	0	0	0	0	0	0	0	0	0	0	0	0	2	2	3	2	2	>20	15	0	0	18	3	>20	>20	0	0		
<i>Spio decoratus</i>	3382	10	9	>20	6	2	9	4	15	>20	0	0	2	0	>20	>20	>20	>20	>20	18	>20	0	>20	0	>20	>20	>20	0	0	>20	
<i>Paradoneis armata</i>	3054	>20	5	16	4	13	4	5	7	0	0	18	0	0	10	9	6	15	10	5	0	0	0	0	0	0	0	0	0	0	0
<i>Mediomastus sp.</i>	2991	0	8	11	5	10	7	8	0	0	0	0	0	0	7	3	2	11	13	8	10	0	9	0	0	0	0	0	0	0	0
<i>Loripinus fragilis</i>	2745	0	0	0	0	0	0	0	0	0	0	0	0	0	1	1	1	>20	>20	>20	0	0	0	0	0	0	0	0	0	0	0
<i>Prionospio caspersi</i>	2689	>20	12	>20	15	0	0	0	0	0	0	0	>20	>20	6	7	4	5	7	7	0	0	0	>20	19	0	0	0	0	0	0
<i>Thracia phaseolina</i>	2604	>20	16	>20	11	11	6	15	6	15	0	17	>20	12	15	11	11	6	6	3	>20	0	0	0	0	0	>20	>20	0	0	>20
<i>Ampelisca brevicornis</i>	2056	0	0	0	0	0	0	0	0	2	11	12	15	6	>20	>20	>20	4	4	14	0	>20	15	17	8	1	6	11	11	11	
<i>Magelona mirabilis</i>	1366	0	0	0	0	0	0	0	0	10	1	6	6	3	>20	>20	>20	>20	18	15	>20	0	0	0	>20	0	0	0	0	0	9
<i>Pseudocuma longicorne</i>	1356	0	0	0	0	0	0	0	0	14	>20	0	4	10	>20	>20	>20	20	5	>20	15	0	0	0	0	0	0	0	0	0	0
<i>Tellina fabula</i>	1326	0	0	0	0	0	0	0	0	5	15	9	20	7	5	4	5	>20	19	16	0	0	0	18	0	0	0	0	0	0	0
<i>Ampelisca tenuicornis</i>	1280	0	0	0	0	0	0	0	0	0	0	0	0	0	>20	>20	>20	3	8	>20	0	0	0	0	>20	>20	0	0	0	0	0
<i>Scoletoma impatiens</i>	1178	0	0	0	0	0	0	0	0	0	0	0	0	0	18	15	8	>20	>20	>20	1	16	8	3	9	29	15	24	0	0	
<i>Chamelea gallina</i>	1097	8	>20	>20	>20	>20	>20	>20	>20	19	17	11	11	2	>20	>20	>20	19	15	12	3	29	0	14	0	14	0	3	12	>20	
Mean density per m <sup>2</sup>	3290	9110	2737	23,367	7485	13,140	4080	1764	1329	1286	744	16,429	2105	4818	4660	3661	11,300	24,594	32,901	1336	400	754	320	588	590	457	268	282			

## References

- Albertelli, G., Bonomi, A., Covazzi, A., Della Croce, N., Frascchetti, S., 1993. Macro-bentos y parámetros ambientales en fondos arenosos del Mar de Liguria, Italia. VII Simposio Ibérico de Estudio del Bentos Marino. Murcia (Spain), 1-4 October 1991, pp. 305–312.
- Bakalem, A., 1979. Contribution à l'étude des peuplements benthiques de la baie d'Alger. Thèse de 3ème cycle. Université de Brest, France.
- Bakalem, A., 2008. Les peuplements des sables fins de la côte Algérienne. Thèse de Doctorat d'Etat, option Océanographie Biologique, Faculté des Sciences Biologiques, Université des Sciences et de la Technologie Houari Boumediene (USTHB), Alger, Algérie. [www.unicaen.fr/m2c/IMG/pdf/bakalem\\_ali\\_these\\_2008.pdf](http://www.unicaen.fr/m2c/IMG/pdf/bakalem_ali_these_2008.pdf).
- Bakalem, A., Ruellet, T., Dauvin, J.C., 2009. Benthic indices and ecological quality of shallow Algeria fine sand community. Ecol. Ind. 9, 395–408.
- Bayed, A., Bazairi, H., 2008. Variations interannuelles de la macrofaune benthique des substrats meubles de la baie de l'Oued Laou (Mer d'Alboran, Maroc). Trav. Inst. Sci. Rabat 5, 99–106.
- Bellan, G., 1967. Pollution et peuplements benthiques sur substrat meuble dans la région de Marseille. Première Partie. Rev. Inter. Océanogr. Méd 6–7, 53–87.
- Bellan, G., Bourcier, M., Salen-Picard, C., Arnoux, A., Casserley, S., 1999. Benthic ecosystem changes associated with wastewater treatment at Marseille: implications for the Mediterranean protection and recovering. Wat. Envir. Res. 71, 483–493.
- Bellan, G., 2007. Pollution indices. Encycl. Ecol. 2861–2868.
- Bellan, G., Labadie, F., Bellan-Santini, D., 2013. Le problème de la détermination de la nature des habitats et de leur état écologique dans un programme de cartographie. Actes CARHAMBAR 2013, Brest, 26–28 mars 2013, AAMP/IFREMER: 126–130. <http://www.carhambar.org>.
- Ben-Tuvia, A., 1983. The Mediterranean Sea, B. Biological aspects. Chapter 10. In: Ketchum, B.H. (Ed.), Estuaries and Enclosed Seas. Elsevier, Amsterdam, 210 pp.
- Blanchet, H., Lavesque, N., Ruellet, T., Dauvin, J.C., Sauriau, P.G., Desroy, N., Desclaux, C., Leconte, M., Bachelet, G., Janson, A.L., Bessineton, C., Duhamel, S., Jourde, J., Mayot, S., Simon, S., De Montaudouin, X., 2008. Use of biotic indices in semi-enclosed coastal ecosystems and transitional waters habitats - implications for the implementation of the European Water Framework Directive. Ecol. Ind. 8, 360–372.
- Bolam, S.G., Eggleton, J.D., 2014. Macrofaunal production and biological traits: spatial relationships along the UK continental shelf. J. Sea Res. 88, 47–58.
- Borja, A., Franco, J., Perez, V., 2000. A marine biotic index to the establish ecological quality of soft-bottom benthos within European estuarine coastal environments. Mar. Poll. Bull. 40, 1100–1114.
- Borja, A., Muxika, I., 2005. Guidelines for the use of AMBI (AZTI's Marine Biotic Index) in the assessment of the benthic ecological quality. Mar. Poll. Bull. 50, 787–789.
- Borja, A., Elliott, M., Carstensen, J., Heiskanen, A.S., van de Bund, W., 2010. Marine management - towards an integrated implementation of the European marine Strategy framework and the water framework directives. Mar. Poll. Bull. 60, 2175–2186.
- Borja, A., Barbone, E., Basset, A., Borgersen, G., Brkljacic, M., Elliott, M., Garmedia, J.M., Marques, J.C., Mazik, K., Muxika, I., Neto, J.M., Norling, K., Rodriguez, J.G., Rosati, I., Rygg, B., Teixeira, H., Trayanova, A., 2011. Response of single benthic metrics and multi-metric methods to anthropogenic pressure gradients, in five distinct European coastal and transitional ecosystems. Mar. Pollut. Bull. 62, 499–513.
- Borja, A., Marin, S.L., Muxika, I., Pino, L., Rodriguez, J.G., 2015. Is there a possibility of ranking benthic quality assessment indices to select the most responsive to different human pressures? Mar. Poll. Bull. 97, 85–94.
- Bourcier, M., 1996. Long-term changes (1954 to 1982) in the benthic macrofauna under the combined effects of anthropogenic and climatic action (example of one Mediterranean Bay). Oceanol. Acta 19, 67–78.
- Bremner, J., Rogers, S.I., Frid, C.L.J., 2003. Assessing functional diversity in marine benthic ecosystems: a comparison of approaches. Mar. Ecol. Prog. Ser. 254, 11–25.
- Bremner, J., Rogers, S.I., Frid, C.L.J., 2006. Methods for describing ecological functioning of marine benthic assemblages using biological traits analysis (BTA). Ecol. Indic. 6, 609–622.
- Cardell, M.J., Sardá, R., Romero, J., 1999. Spatial changes in sublittoral soft-bottom Polychaete Assemblages due to river inputs and sewage discharges. Acta Oecol 20, 343–351.
- Clarke, K.R., Gorley, R.N., 2006. PRIMER V6: User Manual/Tutorial. PRIMER-E, Plymouth.
- Dauvin, J.C., Alizier, S., Rolet, C., Bakalem, A., Bellan, G., Gomez Gesteira, J.L., Grimes, S., De-La-Ossa-Carretero, J.A., Del-Pilar-Ruso, Y., 2012. Response of the different indices to the diverse human pressures. Ecol. Ind. 12, 143–153.
- Dauvin, J.C., Andrade, H., de-la-Ossa-Carretero, J.A., Del Pilar Ruso, Y., Riera, R., 2016. Polychaete/Amphipod ratios: an approach to validating simple benthic indicators. Ecol. Ind. 63, 89–99.
- De Biasi, A.M., Aliani, S., 2001. Monitoring of marine macrobenthic communities at a dumping site: are cause/effect relationships clear? Atti Soc. Tosc. Sci. Nat. Mem. Ser. B 108, 1–58.
- De Juan, S., Demestre, M., 2012. A trawl disturbance indicator to quantify large scale fishing impact of ecosystems. Ecol. Ind. 18, 183–190.
- De-la-Ossa-Carretero, J.A., Del Pilar Ruso, Y., Giménez Casaldueiro, F., Sánchez



- Lizaso, J.L., 2008. Effect of Sewage Discharge in *Spisula subtruncata* (da Costa 1778) Populations. Arch. Envir. Contam. Toxic. 54, 226–235.
- De-la-Ossa-Carretero, J.A., Dauvin, J.C., 2010. A comparison of two biotic indices, AMBI and BOPA/BO2A, for assessing the Ecological Quality Status (EcoQS) of benthic macro-invertebrates. Transit. wat. Bull. 4, 12–24.
- De-la-Ossa-Carretero, J.A., Del-Pilar-Ruso, Y., Giménez-Casaldueiro, F., Sánchez-Lizaso, J.L., 2010. Sensitivity of tanaid *Apsedes latreillei* (Milne-Edwards) populations to sewage pollution. Mar. Environ. Res. 69, 309–317.
- Diviacco, G., Somaschini, A., 1994. Classification of soft-bottom communities off the Apulian coast (Mediterranean Sea). Mar. Life 4, 31–39.
- Fresi, E., Gambi, M.C., Focardi, S., Barbagli, R., Baldi, F., Falciari, L., 1983. Benthic community and sediment types: a structural analysis. P.S.Z.N.I. Mar. Ecol. 4, 101–121.
- Garcia, C., 2010. Approche fonctionnelle des communautés benthiques du bassin oriental de la Manche et du sud de la Mer du Nord. PhD Thesis. University of Lille1, France.
- Gatti, G., Bianchi, C.N., Morri, C., Montefalcone, M., Sartoretto, S., 2015. Coralligenous reefs state along anthropized coasts: application and validation of the COARSE index, based on a rapid visual assessment (RVA) approach. Ecol. Ind. 52, 567–576.
- Grémare, A., Amouroux, J.M., Vétion, G., 1998a. Long-term comparison of macrobenthos within the soft bottoms of the Bay of Banyuls-sur-mer (northwestern Mediterranean Sea). J. Sea Res. 40, 281–302.
- Grémare, A., Sardá, R., Medernach, L., Jordana, E., Pinedo, S., Amouroux, J.M., Martin, D., Nozais, C., Charles, F., 1998b. On the dramatic increase of *Ditrupea arietina* O.F. Müller (Annelida: Polychaeta) along the French and Spanish Catalan coasts. Estuar. Coast. Shelf Sci. 47, 447–457.
- Grémare, A., Amouroux, J.M., Cauwet, G., Charles, F., Courties, C., De Bovée, F., Dinot, A., Devenon, J.L., De Madron, X.D., Ferré, B., Fraunié, P., Joux, F., Lantoine, F., Lebaron, P., Naudin, J.J., Palanques, A., Pujo-Pay, M., Zudaire, L., 2003. The effects of a strong winter storm on physical and biological variables at a shelf site in the Mediterranean. Oceanol. Acta 26, 407–419.
- Grimes, S., Ruellet, T., Dauvin, J.C., Boutiba, Z., 2010. Ecological Quality Status of the soft-bottom communities on the Algerian coast: general patterns and diagnosis. Mar. Poll. Bull. 60, 1969–1977.
- Grimes, S., 2010. Les peuplements macrobenthiques des substrats meubles algériens: organisation et structure. Thèse de Doctorat d'Etat. Université Sénia, Oran, Algérie. [www.unicaen.fr/m2c/IMG/pdf/grimes\\_samir\\_these\\_2010.pdf](http://www.unicaen.fr/m2c/IMG/pdf/grimes_samir_these_2010.pdf).
- Guille, A., 1970. Bionomie benthique du plateau continental de la côte catalane française. II- Les communautés de la macrofaune. Vie Milieu 21, 149–280.
- Guille, A., 1971. Bionomie benthique du plateau continental de la côte catalane française IV-Densités, biomasses et variations saisonnières de la macrofaune. Vie Milieu 22, 93–158.
- Hartley, J.P., 2014. A Review of the Occurrence and Ecology of Dense Populations of *Ditrupea arietina* (Polychaeta: Serpulidae). Mem. Mus. Victoria 71, pp. 85–95.
- Labadie, F., Trébaud, E., Bellan, G., 2011. Inventaires biologiques et analyse écologique des habitats marins patrimoniaux du lot Natura 2000 (FR930 1592) Camargue. In Vivo Environnement, 29940 La Forêt Fouesnant, Rapport à l'Agence des Aires Marines Protégées, Brest, France.
- Labrune, C., Grémare, A., Amouroux, J.M., Sardá, R., Gil, J., Taboada, S., 2007a. Assessment of soft-bottom polychaete assemblages in the Gulf of Lions (NW Mediterranean) based on a mesoscale survey. Estuar. Coast. Shelf Sci. 71, 133–147.
- Labrune, C., Grémare, A., Guizien, K., Amouroux, J.M., 2007b. Long-term comparison of soft bottom macrobenthos in the Bay of Banyuls-sur-mer (north-western Mediterranean Sea): a reappraisal. J. Sea Res. 58, 125–143.
- Labrune, C., Grémare, A., Amouroux, J.M., Sardá, R., Gil, J., Taboada, S., 2008. Structure and diversity of shallow soft-bottom benthic macrofauna in the Gulf of Lions (NW Mediterranean). Helgol. Mar. Res. 62, 201–214.
- Labrune, C., Romero-Ramírez, A., Amouroux, J.M., Duchène, J.C., Desmalades, M., Escoubeyrou, K., Buscaïl, R., Grémare, A., 2012. Comparison of ecological quality indices based on benthic macrofauna and sediment profile images: a case study along an organic enrichment gradient off the Rhône River. Ecol. Ind. 12, 133–142.
- La Rivière, M., Michez, N., Aish, A., Bellan-Santini, D., Bellan, G., Dauvin, J.C., Derrien-Courtel, S., Grall, J., Guerin, L., Janson, A.L., Sartoretto, S., Thiébaud, E., Thibaut, T., Verlaque, M., 2016. Evaluation de la sensibilité des habitats benthiques de Méditerranée - Version 1. Service du patrimoine naturel. Muséum National d'Histoire Naturelle, Paris, France.
- Martin, D., Pinedo, S., Sardá, R., 2000. Distribution patterns and trophic structure of soft-bottom polychaete assemblages in a north-western Mediterranean shallow-water bay. Ophelia 53, 1–17.
- Massé, H., 1970. Contribution à l'étude de la macrofaune des peuplements de sable fins infralittoraux des côtes de Provence, I. Baie de Bandol. Téthys 2, 783–820.
- Massé, H., 1971a. Contribution à l'étude quantitative de la macrofaune de peuplements des sables fins infralittoraux: II- La baie du Prado (golfe de Marseille). Téthys 3, 113–158.
- Massé, H., 1971b. Contribution à l'étude de la macrofaune de peuplements des sables fins infralittoraux des côtes de Provence, III. Anse de Verdon. IV. Anse de Saint Gervais (golfe de Fos). Téthys 3, 283–319.
- Massé, H., 1971c. Contribution à l'étude quantitative et dynamique de peuplements des sables fins infralittoraux, V. La côte de Camargue. Téthys 3, 539–568.
- Massé, H., 1972. Quantitative investigations of sand-bottom macrofauna along the Mediterranean north-west coast. Mar. Biol. 15, 200–209.
- Massé, H., 1996. Trente ans d'aménagements dans la baie du Prado (golfe de Marseille) comment réagit la macrofaune des sables fins? Mésogée 55, 33–42.
- Massé, H.L., 1998. Conséquences à long terme de travaux d'aménagements littoraux sur la macrofaune des sables fins de deux stations de la baie du Prado (Méditerranée nord-occidentale, golfe de Marseille). Vie Milieu 48, 79–87.
- Massé, H., 2000. Long-term changes in sand-bottom macrofauna along the coast of Provence (northwest Mediterranean Sea). Oceanol. Acta 23, 229–242.
- Mearns, A.J., Word, J.Q., 1982. Forecasting effects of sewage solids on marine benthic communities. In: Mayer, G.F. (Ed.), Ecological Stress and the New York Bight: Science and Management. Estuarine Research Federation, Columbia, pp. 495–512.
- Nykjaer, L., 2009. Mediterranean Sea surface warming 1985–2006. Clim. Res. 39, 11–17.
- Paganelli, D., Marchini, A., Occhipinti-Ambrogi, A., 2012. Functional structure of marine benthic assemblages using biological traits analysis (BTA): a study along the Emilia-Romagna coastline (Italy, North-West Adriatic Sea). Estuar. Coast. Shelf Sci. 96, 245–256.
- Péres, J.M., Picard, J., 1964. Nouveau manuel de bionomie benthique de la mer Méditerranée. Rec. Trav. Stat. Mar. Endoume 42, 3–113.
- Rice, J., Arvanitidis, C., Borja, A., Frid, C., Hiddink, J.G., Krause, J., Lorance, P., Ragnarsson, S.A., Skold, M., Trabucco, B., Enserink, L., Norkko, A., 2012. Indicators for sea-floor integrity under the European marine Strategy framework directive. Ecol. Ind. 12, 174–184.
- Rigolet, C., Dubois, S.F., Thiébaud, E., 2014. Benthic control freaks: effects of the tubicolous amphipod *Haploopsis nira* on the specific diversity and functional structure of benthic communities. J. Sea Res. 85, 413–427.
- Romero-Ramirez, A., Bonifácio, P., Labrune, C., Sardá, R., Amouroux, J.M., Bellan, G., Duchène, J.C., Hermand, R., Karakassis, I., Grémare, A., 2016. Long-term (1998–2010) large-scale comparison of the ecological quality status of Gulf of Lions (NW Mediterranean) benthic habitats. Mar. Pollu. Bull. 102, 102–113.
- Sánchez-Moyana, J.E., Estacia, F.J., Garcia-Adiego, E.M., Garcia-Gomez, J.C., 2004. Dredging impact on the benthic community of an unaltered inlet in southern Spain. Helgol. Mar. Res. 58, 32–39.
- Sardá, R., Fluviá, M., 1999. Tourist development in the Costa Brava (Girona, Spain): a quantification of pressures on the coastal environment. In: Salomons, W., Turner, R.K., Lacerda, L.D., Ramachandran, S. (Eds.), Perspectives on Integrated Coastal Zone Management. Springer, Berlin, pp. 257–276.
- Sardá, R., Pinedo, S., Martin, D., 1999. Seasonal dynamics of macroinfaunal key species inhabiting shallow soft-bottom in the bay of Blanes (NW Mediterranean). Acta Oecol 20, 315–326.
- Sardá, S., Pinedo, S., Grémare, A., Taboada, S., 2000. Changes in the dynamics of shallow sandy-bottom assemblages due to sand extraction in the Catalan Western Mediterranean Sea. ICES J. Mar. Sci. 57, 1446–1457.
- Sardá, R., Pinedo, S., Grémare, A., Taboada, S., 2001. Changes in the dynamics of shallow soft-bottom due to man-made disturbance processes in the Catalan Western Mediterranean Sea. ICES J. Mar. Sci. 57, 1446–1457.
- Sardá, R., Serrano, L., Labrune, C., Gil, J., March, D., Amouroux, J.M., Taboada, S., Bonifacio, P., Grémare, A., 2014. Shallow-water Polychaete Assemblages in the Northwestern Mediterranean Sea and its Possible Use in the Evaluation of Good Environmental State. Mem. Mus. Victoria 71, pp. 289–301.
- Shaltout, M., Omstedt, A., 2014. Recent sea surface temperature trends and future scenarios for the Mediterranean Sea. Oceanologia 39, 11–17.
- Shannon, C.E., 1948. A mathematical theory of communication. Bell Syst. Tech. J. 27, 379–423.
- Simonini, R., Ansaloni, I., Bonvicini Pagliai, A.M., Cavallini, F., Iotti, M., Mauri, M., Montanari, G., Preti, M., Rinaldi, A., Prevedelli, D., 2005. The effects of sand extraction on the macrobenthos of a relict sands area (Northern Adriatic Sea): results 12 months post-extraction. Mar. Poll. Bull. 50, 768–777.
- Somaschini, A., 1993. A Mediterranean fine-sand polychaete community and the effect of the tube-dwelling *Owenia fusiformis* delle Chiaje on the community structure. Intern. Rev. Gesamt. Hydro 78, 219–233.
- Somaschini, A., Martini, N., Gravina, M.F., Belluscio, A., Corsi, F., Ardizzone, G.D., 1998. Characterization and cartography of some Mediterranean soft-bottom benthic communities (Ligurian Sea, Italy). Sci. Mar. 62, 27–36.
- Tataranni, M., Lardicci, C., 2010. Performance of some biotic indices in the real variable world: a case study at different scales in North-Western Mediterranean Sea. Environ. Poll. 158, 26–34.
- Usseglio-Polatera, P., Bournaud, M., Richoux, P., Tachet, H., 2000. Biological and ecological traits of benthic freshwater macroinvertebrates: relationships and definition of group with similar traits. Fresh. Biol. 43, 175–205.
- Verissimo, H., Bremner, J., Garcia, C., Patricio, J., van der Linden, P., 2012. Assessment of the subtidal macrobenthic community functioning of a temperate estuary following environmental restoration. Ecol. Ind. 23, 312–322.
- Ward Jr., J.H., 1963. Hierarchical grouping to optimize an objective function. J. Amer. Stat. Assoc. 58, 236–244.