



**HAL**  
open science

## **From forest transition to ecosystem services transition: Dynamics of ecosystem services in the Reventazón watershed in Costa Rica**

Améline Vallet, Bruno Locatelli, Harold Levrel, Christian Brenes Pérez, Pablo Imbach, Natalia Estrada Carmona, Raphaël J. Manlay, Johan Oszwald

### ► **To cite this version:**

Améline Vallet, Bruno Locatelli, Harold Levrel, Christian Brenes Pérez, Pablo Imbach, et al.. From forest transition to ecosystem services transition: Dynamics of ecosystem services in the Reventazón watershed in Costa Rica. Eight International Ecosystem Services Partnership Conference 2015, ESP, Nov 2015, Stellenbosch, South Africa. hal-01674345

**HAL Id: hal-01674345**

**<https://hal.science/hal-01674345>**

Submitted on 2 Jan 2018

**HAL** is a multi-disciplinary open access archive for the deposit and dissemination of scientific research documents, whether they are published or not. The documents may come from teaching and research institutions in France or abroad, or from public or private research centers.

L'archive ouverte pluridisciplinaire **HAL**, est destinée au dépôt et à la diffusion de documents scientifiques de niveau recherche, publiés ou non, émanant des établissements d'enseignement et de recherche français ou étrangers, des laboratoires publics ou privés.

# From forest transition to ecosystem services transition: Dynamics of ecosystem services in the Reventazón watershed, Costa Rica

ESP Conference, Stellenbosch – 12<sup>th</sup> of November 2015

Améline VALLET

Locatelli B.; Levrel H.; Brenes C.; Imbach P.; Estrada N.; Manlay R.

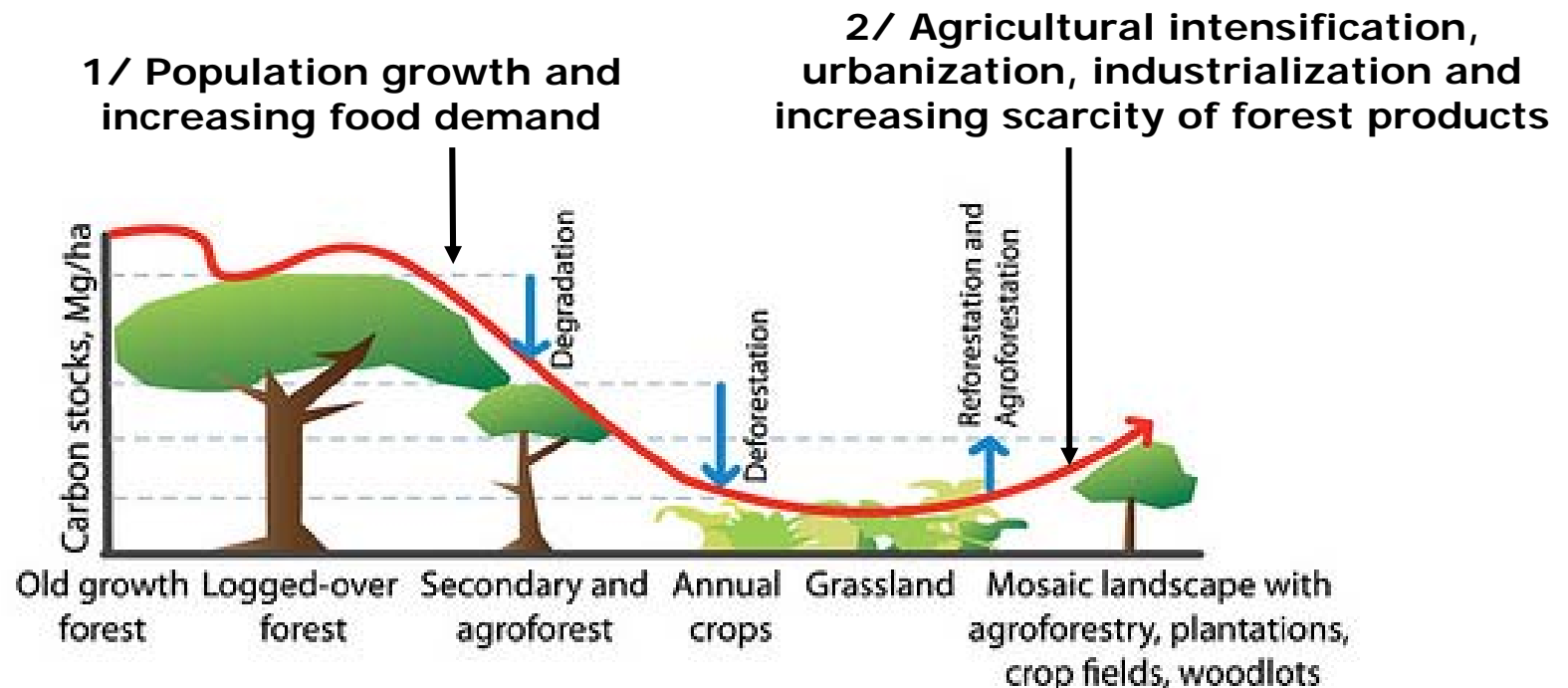


# Context and stakes

- Need to better understand ES dynamics overtime and their drivers (Wolff et al. 2015; Turner et al. 2013; Morán-Ordóñez et al. 2013; Dearing et al. 2012; Rounsevell et al. 2010; Carpenter et al. 2009)
- Decision making should use knowledge on past ES evolutions
- ES dynamics overtime remain poorly understood
- Few studies assess the historic effects of land use on ES dynamics (Locatelli et al. 2014; Pagella et Sinclair 2014)
- In comparison, the dynamics of forest cover have been widely studied (Grainger 2009)

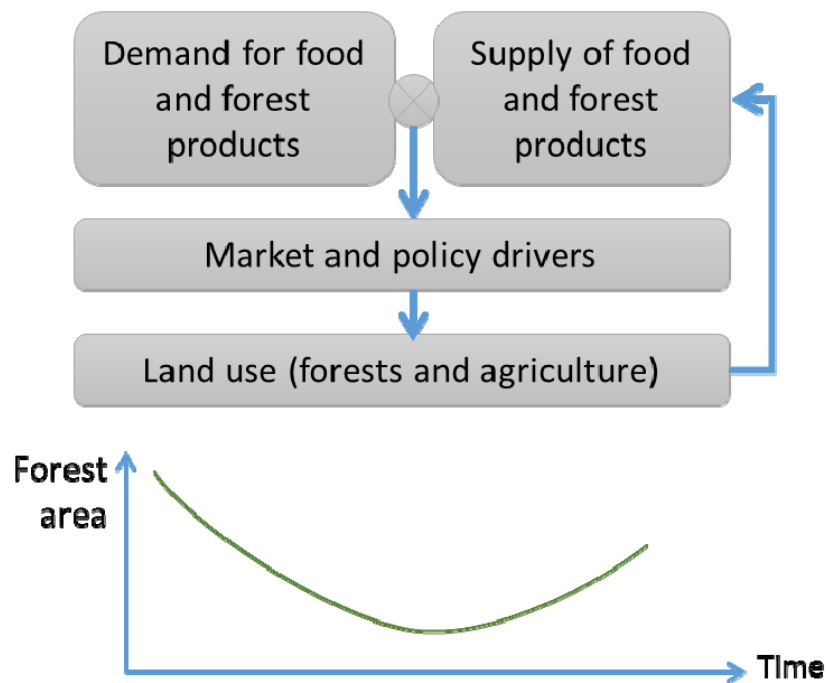
# Forest Transition

- Two major stages in the development trajectories of countries or regions (Mather 1992; Rudel et al. 2005; Mather 1992; Mather et Needle 1998)

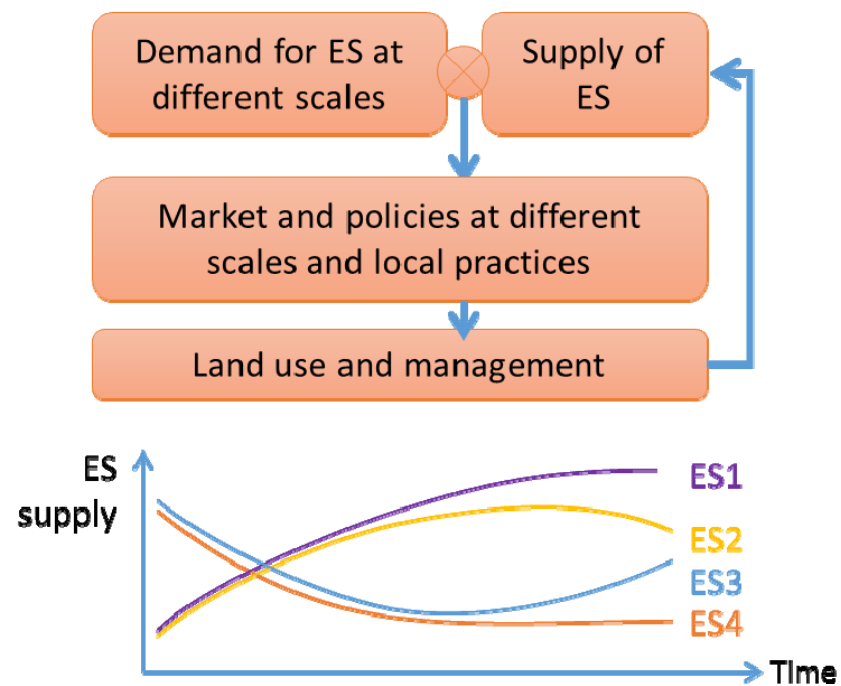


Adapted from CGIAR Research Program 6 on Forests, Trees and Agroforestry, CIFOR.

## From Forest Transition...



## ...To Ecosystem Service Transition



# Testing the Ecosystem Service Transition

- Can we observe ES transitions where forest transitions have been suggested?
  - Example of Costa Rica

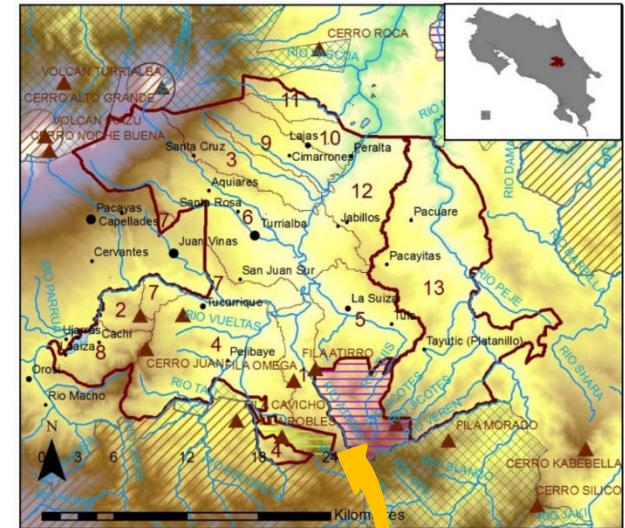


# Study site

- Mixed agricultural and forested landscape
- Economic activities: agriculture, cattle farming, tourism and hydroelectricity production



Central  
Volcanic-  
Talamanca  
Biological  
Corridor



# Methods

## 1/ Qualitative assessment

Literature review

→ Identify evidence of transitions and socio-economic drivers

## 2/ Quantitative assessment

Mapping of ecosystem service supply (InVEST)

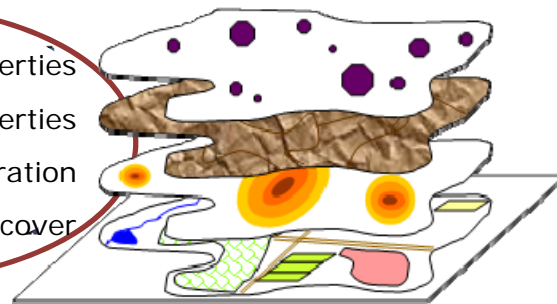
→ Quantify changes in ecosystem services  
→ Observe transitions at different scales

(Sharp et al. 2014)

- Open source data
- Data from local partners

Socio-economic properties  
Biophysical properties  
Landscape configuration  
Land use/cover

Land properties



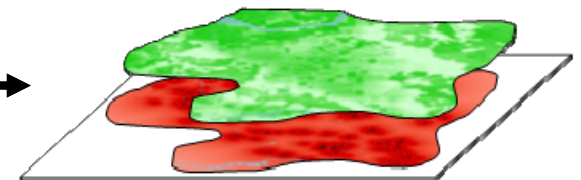
- Literature review
- Calculations

Rainfall erosivity  
Nutrients loads  
Carbon stocks

Models parameters

$R$   $\beta$   $\mu$

Ecosystem Service Supply



6 ecosystem services:  
C, n, p, sed, wy, ap



# Methods

## 1/ Qualitative assessment

Literature review

→ Identify evidence of transitions and socio-economic drivers

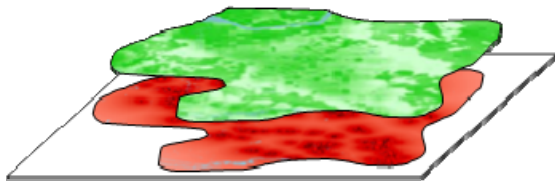
## 2/ Quantitative assessment

Mapping of ecosystem service supply (InVEST)

→ Quantify changes in ecosystem services  
→ Observe transitions at different scales

(Sharp et al. 2014)

Ecosystem Service Supply

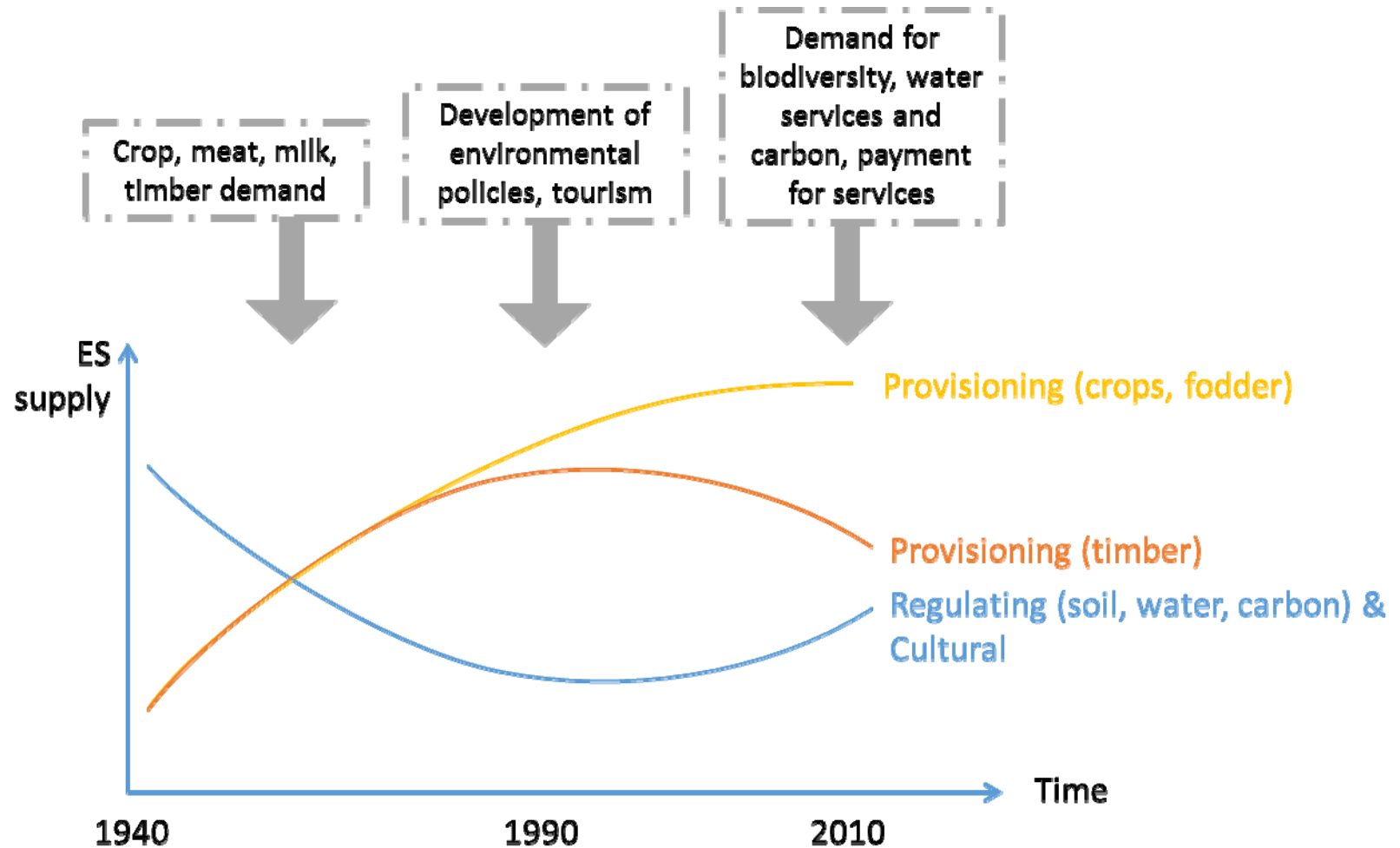


## Statistical analysis

- Normalization
- Testing significant changes
- Clustering

6 ecosystem services:  
C, n, p, sed, wy, ap

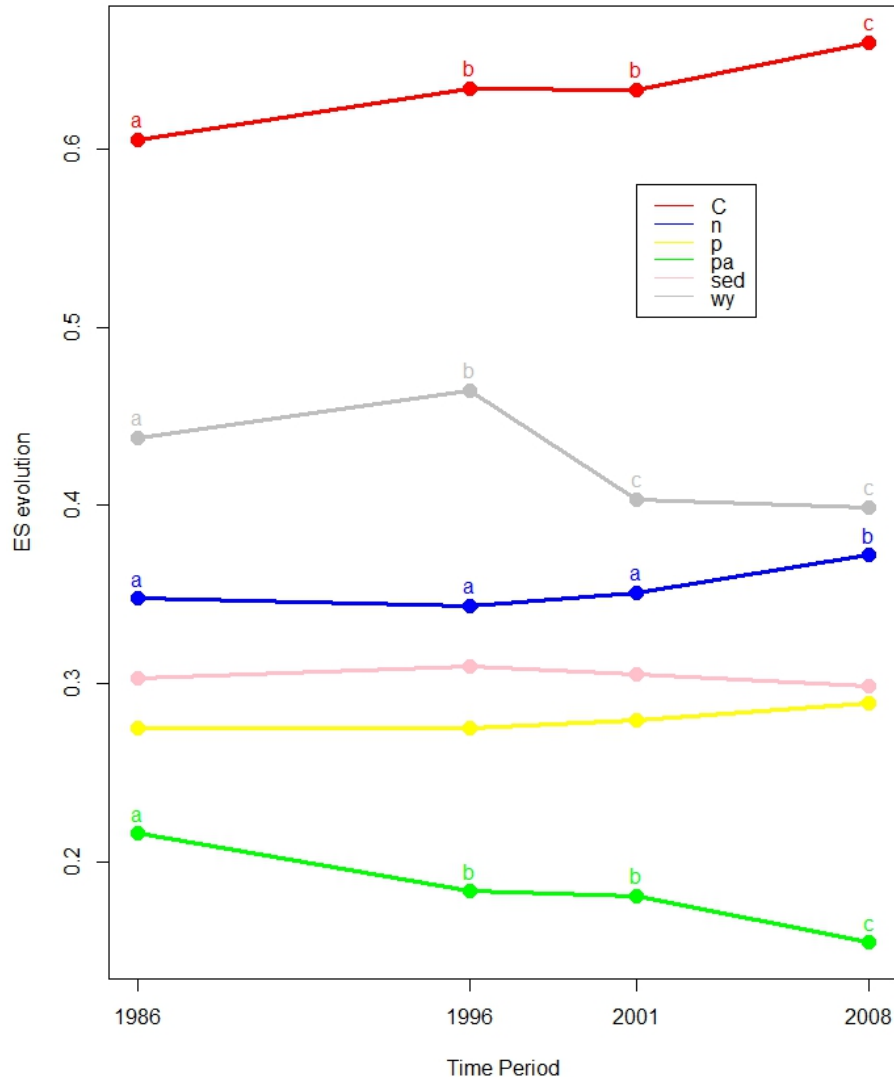
# Qualitative analysis



Data from: Sader and Joyce, 1988; Bray, 2010; Calvo-Alvarado et al., 2009; Marchamalo and Romero, 2007; Vignola et al., 2010; Daniels, 2010; Kull et al., 2007; INEC et al., 2012; Brockett and Gottfried, 2002; Stem et al., 2003; Pagiola, 2008; PREVDA, 2008; Locatelli et al., 2011a; Locatelli et al., 2011b; Sanchez-Azofiefa et al., 2007; Zhang and Pagiola, 2011; Castro et al., 2000; Kleinn et al., 2002; Redo et al., 2012; Grainger, 2010; Klein Goldewijk et al., 2011; Bontemps et al., 2011; Biénabe and Hearne, 2006; ITCR, 2004.

# Results: Ecosystem Services Dynamics

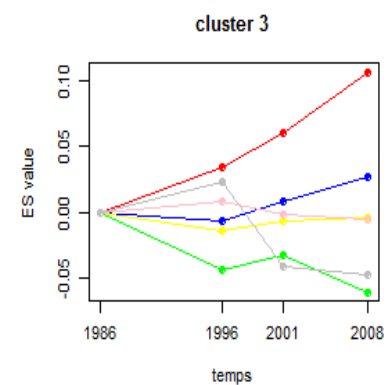
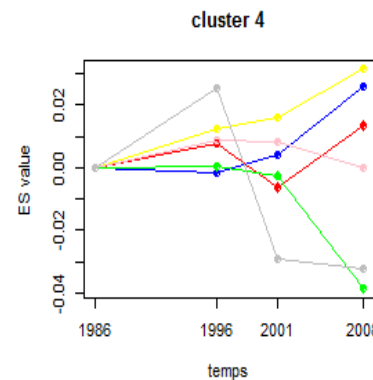
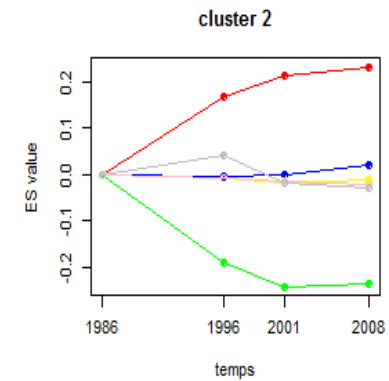
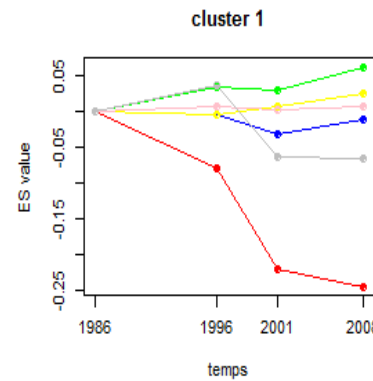
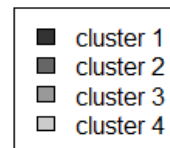
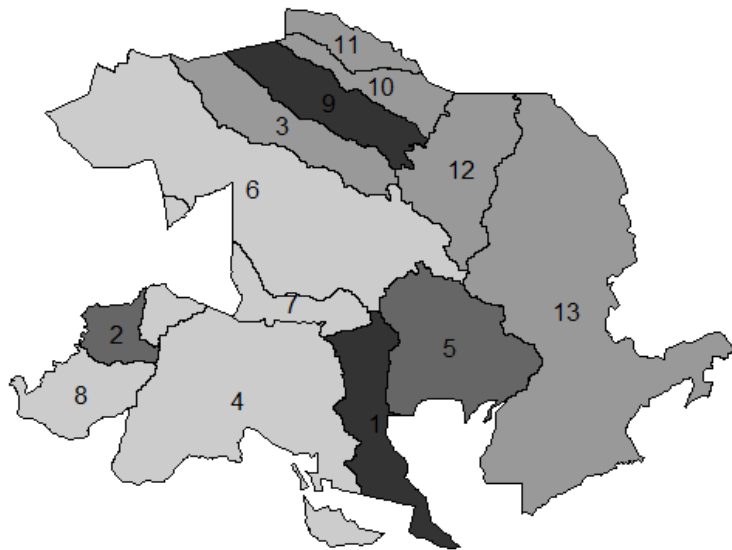
ES evolution overtime:  
average of scaled and transformed variables



- C and n ↗ ← General increase of forested land-cover
- ap ↘ ← General decrease of agricultural areas
- wy ↗ & ↘ ← Construction of a dam
- No significant trends for p and sed

# Results: spatial heterogeneity

- Identification of 4 clusters
- Spatial patterns
- Opposing dynamics
- Specific ecosystem services dynamics linked to land-use changes overtime



# Is there an ES Transition in this study site ?

- Qualitative approach suggested the existence of ES Transition, with a shift in the mid 90's
- Quantitative approach did not reveal inflection
  - Absence of transition? Temporal scope is not long enough? Scale effect?
  - Trends are still nascent and uncertain
  - Land-use data is a major limit to describe ES Transition
- Spatial heterogeneity highlights sub-watersheds at different steps of ES Transition

# Further research

- Test the ES Transition framework in different study sites and at different scales (local to national)
- Improve the understanding of ES Transition
  - Identification of different types of transition
  - Spatial and temporal lags between changes in drivers and changes in ES
- Give more attention to interactions between ES overtime

# Thanks for your attention!

If you have questions or comments on this presentation:  
[A.Vallet@cgiar.org](mailto:A.Vallet@cgiar.org)

[www.centre-cired.fr](http://www.centre-cired.fr)

[www.agroparistech.fr](http://www.agroparistech.fr)

[www.cirad.fr](http://www.cirad.fr)

[www.cifor.org](http://www.cifor.org)



# Results: Land use and land-use changes

- Predominance of forests, followed by pastures and agricultural plantations
- Changes affected a small and decreasing proportion of landscape
- Importance of forest regeneration and abandon of agricultural lands
- Spatial patterns of land-use changes

