



HAL
open science

Full melting of a two-dimensional complex plasma crystal triggered by localized pulsed laser heating

Lénaïc Couëdel, V. Nosenko, M Rubin-Zuzic, S. Zhdanov, Y Elskens, T Hall,
A V Ivlev

► **To cite this version:**

Lénaïc Couëdel, V. Nosenko, M Rubin-Zuzic, S. Zhdanov, Y Elskens, et al.. Full melting of a two-dimensional complex plasma crystal triggered by localized pulsed laser heating. *Physical Review E: Statistical, Nonlinear, and Soft Matter Physics*, 2018, 97 (4), pp.043206. 10.1103/PhysRevE.97.043206 . hal-01664461v2

HAL Id: hal-01664461

<https://hal.science/hal-01664461v2>

Submitted on 7 Jan 2022

HAL is a multi-disciplinary open access archive for the deposit and dissemination of scientific research documents, whether they are published or not. The documents may come from teaching and research institutions in France or abroad, or from public or private research centers.

L'archive ouverte pluridisciplinaire **HAL**, est destinée au dépôt et à la diffusion de documents scientifiques de niveau recherche, publiés ou non, émanant des établissements d'enseignement et de recherche français ou étrangers, des laboratoires publics ou privés.

Full melting of a two-dimensional complex plasma crystal triggered by localized pulsed laser heating

L. Couédel,^{1,2,3,*} V. Nosenko,⁴ M. Rubin-Zuzic,⁴ S. Zhdanov,⁴ Y. Elskens,² T. Hall,³ and A. V. Ivlev⁵

¹*Department of Physics and Engineering Physics,
University of Saskatchewan, Saskatoon, SK S7N 5E2, Canada.*

²*CNRS, Aix Marseille Univ., PIIM, UMR 7345, 13397 Marseille cedex 20, France.*

³*Department of Physics, Auburn University, Auburn, Alabama 36849, USA.*

⁴*Institut für Materialphysik im Weltraum, Deutsches Zentrum für Luft und Raumfahrt, D-82234 Weßling, Germany.*

⁵*Max Planck Institute for extraterrestrial Physics, D-85741 Garching, Germany.*

(Dated: April 2, 2018)

The full melting of a two-dimensional plasma crystal was induced in a principally stable monolayer by localized laser stimulation. Two distinct behaviors of the crystal after laser stimulation were observed depending on the amount of injected energy: (i) below a well-defined threshold, the laser melted area recrystallized; (ii) above the threshold, it expanded outwards in a similar fashion to mode-coupling instability induced melting, rapidly destroying the crystalline order of the whole complex plasma monolayer. The reported experimental observations are due to the fluid mode-coupling instability which can pump energy into the particle monolayer at a rate surpassing the heat transport and damping rates in the energetic localized melted spot, resulting in its further growth. [This behavior exhibits remarkable similarities with impulsive spot heating in ordinary reactive matter.](#)

PACS numbers: 52.27.Lw

I. INTRODUCTION

Complex (or dusty) plasmas are weakly ionized gases containing solid micro- or nanoparticles (often referred to as dust particles). Due to interactions with electrons and ions in the ambient plasma, dust accumulates a net electric charge [1–3]. In laboratory low-pressure gas discharges, this charge is negative due to the high mobility of the electrons. By injecting monosized spherical microparticles in the sheath of a capacitively coupled radio-frequency (cc-rf) discharge, it is possible for particles to form a monolayer. This is a result of all the microparticles levitating at the same height in the sheath region above the lower electrode where the electric field is strong enough to balance gravity and ensure stiff confinement [4, 5]. Under specific conditions, they form strongly coupled ordered structures known as two-dimensional (2D) complex plasma crystals [6–11].

2D complex plasmas are often used as model systems for studies of generic phenomena occurring in liquids and crystals at the kinetic (particle) level [3]. In such systems, it is indeed possible to obtain complete information about the state of the whole system of particles in the kinetic (\mathbf{x}, \mathbf{v}) -space. This offers an important advantage for the investigation of collective processes occurring in strongly coupled media including melting and recrystallization [12–15], mass and heat diffusion [16], solitons and shocks [17].

In 2D complex plasmas, as in any strongly coupled 2D system, two in-plane wave modes can be sustained. In crystals, one of these modes is longitudinal, while the

other is transverse, with both having an acoustic dispersion [18]. Since the strength of the vertical confinement due to the sheath electric field is finite, there is a third fundamental wave mode with negative optical dispersion associated with the out-of-plane oscillations [19, 20]. The propagation of dust-lattice (DL) waves in these 2D lattices is often used as a diagnostic tool to determine parameters of the plasma crystal since the wave dispersion depends directly on them [8, 21–23].

In the sheath of a cc-rf discharge, the ion stream coming from the bulk plasma and directed toward the electrode is focused downstream of each negatively charged particle of the monolayer and creates a perturbed region called the “ion (or plasma) wake”. Ion wakes exert an attractive force on the neighboring particles. They can thus be considered as an (external) “third body” in the interparticle interaction resulting in non-reciprocal particle pair interactions [24–27]. Under certain conditions, this can lead to the formation of an unstable hybrid mode and the melting of the crystalline monolayer when the out-of-plane mode crosses the in-plane compressional mode: the mode coupling instability (MCI) [28–32]. The hybrid mode has clear fingerprints: critical angular dependence, a mixed polarization, distinct thresholds [30], and synchronization of the particle motion [33].

Wake-induced mode coupling is also possible in liquid complex plasma monolayers [31]. Remarkably, in such cases, the confinement and dust particle density thresholds, which are important features of the MCI in 2D complex plasma crystals, disappear and the instability has a higher growth rate. Consequently, conditions exist for which both the crystalline and the fluid states are viable, meaning no crossing of the modes in the crystal state and MCI growth rate high enough in the fluid state to

* lenaic.couedel@usask.ca

prevent crystallization. This explains why, in many experiments, the crystallization of a monolayer is achieved only by increasing the gas pressure and/or the rf power (confinement strength is an increasing function of the discharge power [34]). In addition, it is in principle possible to trigger sporadic melting of a stable crystal which is not too far from the crystalline MCI threshold by applying a sufficiently strong mechanical perturbation.

In this article, we demonstrate experimentally that wake-mediated resonant mode coupling can be induced in a principally stable 2D plasma crystal (no crossing of the modes) levitating in the sheath of a cc-rf discharge through an external excitation mechanism. Localized laser stimulation of the monolayer can trigger MCI-induced melting of the stable crystal if the injected energy is sufficient to create a melted spot in which the excess energy due to the fluid MCI is high enough to overcome neutral damping and heat conduction in the rest of the crystal. This causes a further increase in temperature leading to the extension of the melted area over the whole monolayer in a kind of uncontrolled positive feedback. This uncontrolled melting exhibits similarities with impulsive spot heating in ordinary matter.

II. EXPERIMENTAL SETUP

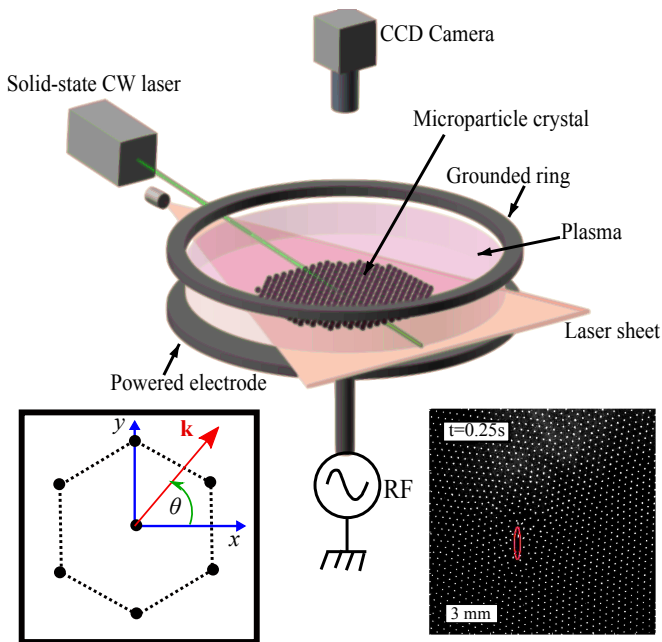


FIG. 1. (Color online) Sketch of the experimental setup. The left inset shows an elementary cell of the hexagonal lattice and the frame of reference chosen in this article. The orientation of the wave vector \mathbf{k} is measured in respect to the x -axis. The right inset is a snapshot of the crystal after 0.25 s of laser heating. The red ellipse shows where the laser light beam interacts with the monolayer.

The experiments were carried out in a cc-rf glow dis-

charge at 13.56 MHz (modified GEC chamber). A sketch of the setup is presented in Fig. 1. The argon pressure p_{Ar} was between 0.6 Pa and 1 Pa, and the forward rf power P_{RF} was between 10 W and 20 W. In the bulk discharge, the electron temperature was $T_e = 2.5$ eV and the electron density was $n_e = 2 \times 10^9 \text{ cm}^{-3}$ at $p_{\text{Ar}} = 0.66$ Pa and $P_{\text{RF}} = 20$ W [35]. Melamine-formaldehyde spherical particles with a diameter of $9.19 \pm 0.09 \mu\text{m}$ were levitated in the plasma sheath above the lower rf electrode and formed a horizontal monolayer, up to 60 mm in diameter. The dust particle suspension was illuminated by a horizontal laser sheet. The particles were imaged through a window at the top of the chamber by a 4 Megapixel Photron FASTCAM Mini WX100 camera at a speed of 250 frames per second. The particle horizontal coordinates, x and y , and velocities, v_x and v_y , were then extracted with sub-pixel resolution in each frame. An additional side-view camera (Basler Ace ACA640-100GM) was used to confirm that we were indeed working with a single layer of particles. More details can be found in previous publications [30, 32, 36].

A SpectraPhysics Millennia PRO 15sJ solid-state 532-nm laser with a continuous-wave (cw) output power of 0.30-2 W was focused for a short period of time on the crystal. Particles in the laser spot were accelerated and the crystal was melted locally. At the crystal surface, the laser spot had an elliptical shape with its major axis in the direction of propagation and the illuminated area was $S_L \simeq 0.32 \text{ mm}^2$. The duration of the laser pulse was varied from 0.05 s to 0.65 s.

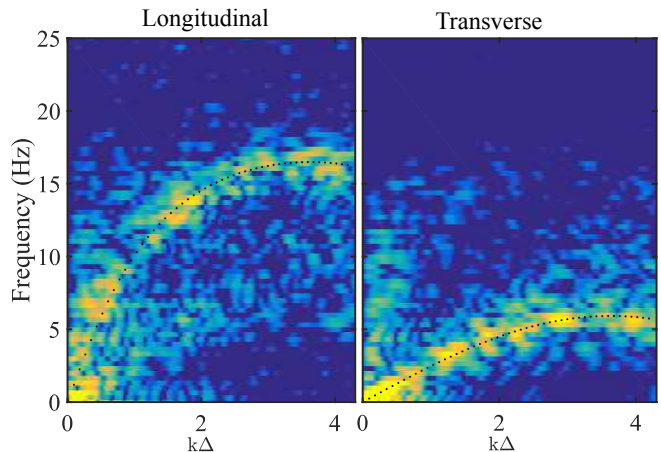


FIG. 2. (Color online) Longitudinal and transverse current fluctuation spectra at an angle $\theta = 0^\circ$. The dotted black curves represent the fitted dispersion relations.

III. RESULTS

A. Characterization of the stable crystal

Prior to laser excitation, a stable 2D crystal with respect to the mode coupling instability (no crossing of the eigenmodes [30]) was levitated above the rf electrode. In the set of experiments presented in this article, the following discharge conditions were chosen: $p_{\text{Ar}} = 1.04$ Pa and $P_{\text{RF}} = 12$ W. For each run, the same microparticles were used and, in case of melting induced by the laser excitation, the monolayer was recrystallized by increasing argon pressure and rf power. The discharge conditions were then restored to the chosen values and the crystalline monolayer was allowed to relax a few minutes before the next laser pulse.

From the particle positions, the mean interparticle distance $\Delta = 415 \pm 10 \mu\text{m}$ (number density $n_{2\text{D}} = 675 \pm 20 \text{ cm}^{-2}$) was obtained by calculating the pair correlation function and measuring the position of the first peak. Using particle velocities, the in-plane compressional and shear particle current fluctuation spectra of the crystalline monolayer were computed. In Fig. 2, the spectra are shown for a propagation angle $\theta = 0^\circ$ (see inset of Fig. 1). No fingerprints of the unstable hybrid mode could be detected and only the eigenmodes were present. By fitting simultaneously the in-plane compressional and shear current fluctuation spectra by the theoretical curves of a 2D Yukawa crystal [29], the microparticle charge $Q = -13800e \pm 500e$, where e is the elementary charge, the screening length $\lambda_{\text{D}} = 408 \pm 47 \mu\text{m}$ and the screening parameter $\kappa = 1.0 \pm 0.15$ were obtained. The vertical confinement frequency was ~ 25 Hz which is in perfect agreement with a crystal far from the MCI threshold.

B. Propagation of the melting front: a threshold behavior

The laser beam was focused on the crystal so that only a few particles were accelerated during the pulse ($N \leq 50$). It created, at a few Δ in front of the laser spot position in the direction of laser light propagation, a small melted spot (1 – 4 mm in diameter) containing particles having high velocities. Depending on the pulse duration and the laser power, the melted area recrystallized or expanded over the whole crystalline monolayer. By tracking the particles during and after the laser pulse, the evolution of the particle kinetic energies was measured, and the energy injected by the laser into the crystal was estimated. At the end of the laser pulse, the total kinetic energy of the particles in the camera field of view (FoV) was at its maximum. However, the particles in the melted spot had trajectories directed along the direction of the laser beam. By looking at the first and second moments of the velocity distribution function in x and y , thermalization due to collisions with other particles was

TABLE I. Laser power P_1 , pulse duration t_{on} , the sum K_t of the kinetic energy of the particles in the camera FoV, and, depending on whether the crystal recrystallized at the end of the laser pulse or melted, the transition time t_{tr} before recrystallization or the inverse of energy growth rate γ_{g}^{-1} , respectively. The boldface entries are the experiments for which a full melting of the monolayer was induced by the laser pulse.

Exp. #	P_1 (W)	t_{on} (s)	$K_t(t_{\text{on}})$ (keV)	$K_t(t_{\text{on}} + t_{\text{th}})$ (keV)	$t_{\text{tr}}, \gamma_{\text{g}}^{-1}$ (s)
1	0.3	0.50	6.22±0.5	3.1±0.1	-
2	0.35	0.50	7.65±0.5	3.6±0.1	-
3	0.40	0.50	11.3±1.0	4.8±0.2	-
4	0.45	0.50	13.0±1.4	7.7±0.5	-
5	0.50	0.50	18.2±2.0	8.3±0.2	-
6	0.55	0.50	23.0±2.1	14.6±0.5	-
7	0.60	0.50	21.9±3.0	15.8±0.2	-
8	0.65	0.50	25.5±1.5	21.0±0.4	0.59±0.03
9	0.70	0.50	28.5±2.4	20.9±1.2	-
10	0.75	0.50	33.1±3.5	23.0±1.0	-
11	0.80	0.50	40.1±1.3	37.1±1.1	0.95±0.03
12	0.85	0.30	14.4±1.3	9.7±0.4	-
13	0.85	0.40	42.8±3.5	30.7±0.6	0.53±0.02
14	0.85	0.50	48.1±4.1	45.7±0.7	0.92±0.02
15	0.85	0.50	34.3±1.1	37.1±0.5	1.86±0.03
16	0.85	0.50	43.4±3.2	35.0±1.5	2.60±0.10
17	0.85	0.55	43.3±2.7	40.9±1.1	0.87±0.04
18	0.85	0.55	52.4±2.1	63.0±1.8	1.26±0.01
19	0.85	0.55	42.6±3.9	40.0±1.3	3.13±0.03
20	0.85	0.55	49.9±1.9	51.9±1.2	0.97±0.01
21	0.85	0.60	60.6±1.3	62.2±1.2	1.21±0.01
22	0.85	0.65	64.1±14.3	58.3±10.2	1.21±0.01
23	2.00	0.05	12.0±7.4	8.0±0.2	-
24	2.00	0.20	40.9±3.6	41.0±2.0	1.23±0.01

completed after $t_{\text{th}} = 0.5$ s (similar Maxwellian velocity distribution centered on 0 in x and y [37]).

In Table I, the sum of the kinetic energies of the particles $K_t = \sum_i K_i(t)$ (total energy) in the camera FoV at the end of the laser pulse ($K_t(t_{\text{on}})$) and after thermalization ($K_t(t_{\text{on}} + t_{\text{th}})$) are listed for the different runs. As expected, at a given laser power, the total energy increased with the pulse duration. The energy after thermalization was slightly smaller due to damping by the neutral background and heat transport in the whole crystalline suspension (which was not entirely comprised in the FoV). Before the laser pulse, the average kinetic temperature of the particles was estimated at $T_0 = 0.13 \pm 0.05$ eV, giving a total energy in the field of view $K_t < 800$ eV. Thus the measured total energy just after the laser pulse corresponds roughly to the energy injected by the pulse into the crystal since it was always much higher than a few keV.

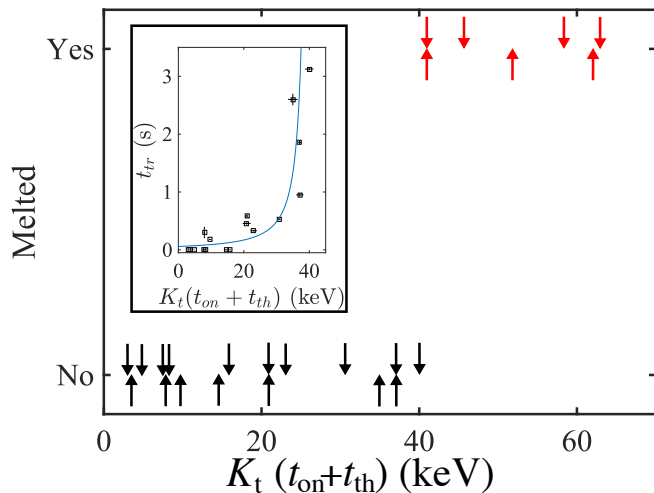


FIG. 3. (Color online) State of the monolayer (red, melted or black, unmelted) at the end of the experiment as a function of $K_t(t_{on} + t_{th})$. Each experiment of Table I is indicated by an arrow of the appropriate color. A threshold at ~ 40 keV is clearly identified. The inset shows the transition time before recrystallisation sets in for injected energies below the melting threshold. The blue line is a guide for the eye.

In Fig. 3, the state of the monolayer at the end of the experiment (recrystallized or fully melted) is plotted as a function of the total energy after thermalization. As can be seen, when $K_t(t_{on} + t_{th})$ reached $= 40 \pm 1$ keV (corresponding to $t_{on} \geq 500$ ms at $P_1 = 0.85$ W), the crystalline monolayer fully melted. The observed step function is a clear sign of a threshold phenomenon.

In Figs. 4 and 5, we illustrate the difference between two experiments showing either recrystallization or melting (Exps. 19 and 20, respectively; see Table I). In Fig. 4, the monolayer Voronoi map (colored according to $|\Psi_6|$) and the kinetic energy map are presented for two experiments using the same laser pulse setting. Here, $\Psi_6(j) = (1/N) \sum_{l=1}^N e^{i\theta_{jl}}$, where N is the number of closest neighbors and θ_{jl} is the angle of vector linking the j th to the l th particle with respect to the x -axis. This order parameter $|\Psi_6|$ represents the deformation of a hexagonal cell from a perfect hexagon ($|\Psi_6| = 1$). As can be seen, before the laser pulse ($t = 0$ s), the crystalline monolayer was cold in both cases with $T_0 \simeq 0.13$ eV and the crystals were almost perfect with only a few dislocations and a few grain boundaries. At the end of the laser pulse ($t = 0.55$ s), a melted spot (high kinetic energy and low values of $|\Psi_6|$) could be seen in the center of the frame. In both cases, compressional waves traveled preferentially in the direction of the laser beam (positive y direction) due to the non-thermalized motion of the excited particles. At $t = 2$ s $> t_{on} + t_{th}$, the particles were thermalized and compressional waves emerged from the hot spot isotropically. It was observed that, in both cases, the melted spot became slightly larger than at $t = 0.55$ s due to heat transport in the crystalline monolayer. However, the spot in experiment 20 showed a slightly larger

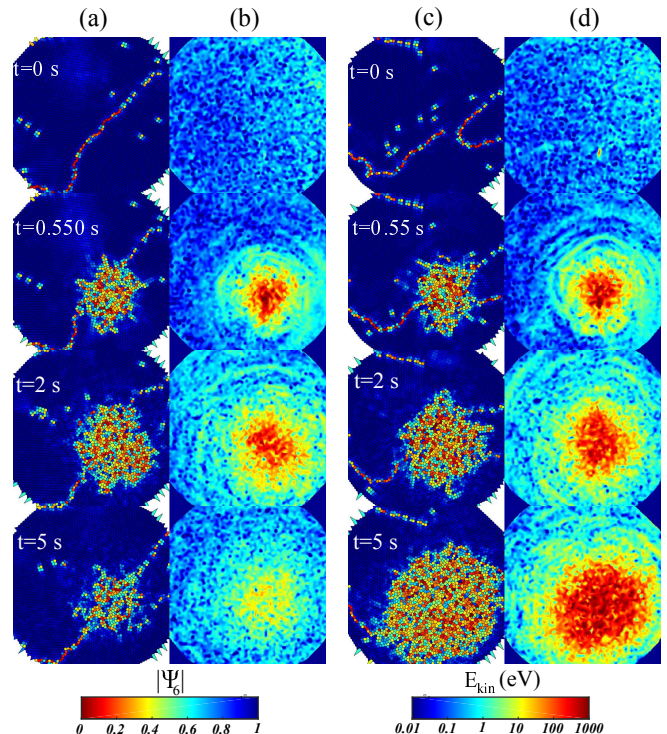


FIG. 4. (Color online) $|\Psi_6|$ maps (a,c) and energy maps (b,d) of the crystal during Exps. 19 (a,b) and 20 (c,d) (see Table I). Each map is a square of 24.6×24.6 mm².

melted spot and the particle kinetic energies were slightly higher.

This observation is confirmed in Fig. 5, in which the time evolution (after the laser pulse) of the radius of the melted zone (MZ) and the evolution of the total kinetic energy in the MZ and the camera FoV are plotted. In this article, the MZ is defined as the area in which the mean kinetic energy is greater than 30 eV [38]. As can be seen in both experiments, most of the kinetic energy in the FoV is carried by the particles in the MZ, though in experiment 19, the injected energy and the radius of the MZ were slightly smaller. In both cases the kinetic energy and MZ radius initially increased, but in experiment 19 the total energy inside the MZ became stable, meaning that the kinetic energy began to decrease. On the contrary, K_{MZ} continued to grow in the case of experiment 20. After ~ 2.25 s, the MZ started to shrink in experiment 19 and the total energy started to decrease while both parameters kept growing in the case of experiment 20 (the energy growth seemed exponential). Finally, in the case of experiment 19, after ~ 3.1 s, the total energy exhibited an exponential decay while the MZ was rapidly shrinking, denoting recrystallization. In experiment 20, the energy kept growing and the MZ eventually extended to the whole monolayer. After 3.5 s, the radius of the MZ grew quasi linearly with a velocity $v_{MZ} \sim 2$ mm/s. A snapshot of the monolayer during the final stage of both experiments can be seen in Fig. 4 ($t = 5$ s).

Another interesting observation is the existence of a

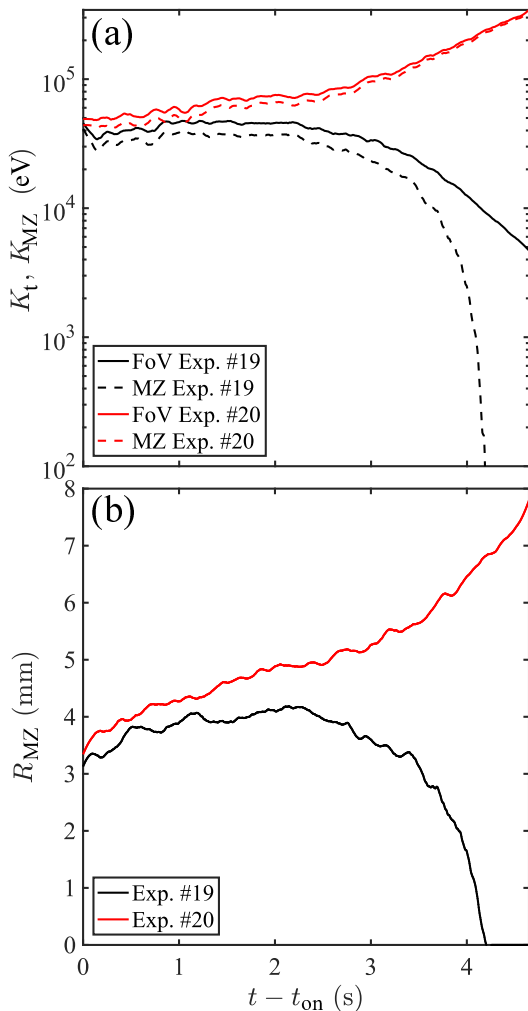


FIG. 5. (Colour online) (a) Evolution of the sum the kinetic energies of the particles in the field of view and in the melted zone as a function of time for Exps. 19 and 20 (see Table I). (b) Evolution of the radius of the melted zone as a function of time.

transition period before the recrystallization sets in for injected energy below the melting threshold. For the purpose of analysis, the transition time t_{tr} is defined as the time before K_t exhibits a clear exponential decay after the end of the laser pulse [39]. In experiment 19, the transition time was 3.13 s (see Fig. 5a). As can be seen in the inset of Fig. 3, the transition time gets longer as the input energy gets closer to the induced-melting energy threshold (experimental values are listed in Table I). For the experiments with injected energy above the threshold the energy growth looked nearly exponential. In Table I, the measured growth times γ_g^{-1} are listed [40]. The average measured value was $\gamma_g^{-1} = 1.1 \pm 0.2$ s.

IV. DISCUSSION

As reported in the previous section, the laser-induced melting of the crystal exhibited a clear energy threshold: above a well-defined amount of energy injected by the laser, the full melting of the crystalline monolayer was triggered. The mechanism by which the monolayer melted can be understood when taking into account the existence of the MCI in fluid monolayers. It was indeed shown by Ivlev *et al.* [31] that the wake-induced coupling of wave modes always occurs in 2D fluid complex plasmas and, contrary to MCI onset in 2D complex plasma crystals, there is no confinement-density threshold. This means that for sufficiently low damping rates the energy input from the fluid MCI (i.e. energy transferred by the ion flow to the crystal) can prevent crystallisation of the monolayer. Moreover, if a large enough melted spot is induced in the crystalline monolayer, the energy input from the localized fluid MCI will not be dissipated rapidly enough (through neutral damping and heat conduction in the crystal), causing a further increase in temperature triggering the expansion of the melted area in an uncontrolled positive feedback. This mechanism will lead to the total destruction of the crystalline monolayer as observed for regular MCI-induced melting of 2D complex plasma crystals [30–32, 41, 42]. Such an “explosive melting” of a 2D complex plasma crystal has been recently studied in detail by Yurchenko *et al.* [42] and was found to be similar to impulsive spot heating and thermal explosion in ordinary matter [43].

In the presented experiments, the laser pulse created a localized melted spot in the crystal where the fluid MCI exists. The spatial temperature distribution $T(r, t)$ in a continuous reactive medium, including damping, can be described by the following heat equation [42, 43]

$$\frac{\partial T}{\partial t} = \frac{Q(T)}{C n_{2D}} - \frac{2\gamma_d}{C}(T - T_0) + \frac{\chi}{r} \frac{\partial}{\partial r} \left(r \frac{\partial T}{\partial r} \right) \quad (1)$$

with the initial condition

$$T(r, 0) = T_0 + \frac{E_1}{2\pi w_{MZ}^2 n_{2D} C} \exp\left(-\frac{r^2}{2w_{MZ}^2}\right) \quad (2)$$

where E_1 is the energy injected by the laser pulse, w_{MZ} is the width of the melted zone, $C \simeq 2 - 3$ is the heat capacity per particle, γ_d is the Epstein damping rate (for our experimental conditions, $\gamma_d \simeq 1.21 \pm 0.13$ s⁻¹ [44]), and χ is the thermal diffusivity.

In Eq. (1), the first term in the r.h.s. is the heat input due to the fluid MCI. Since fluid MCI essentially develops when the correlations between the particles are largely destroyed (so that a horizontal layer, uniform and of infinite extent, can be considered [31]), it supposes a significant overheating compared to the melting temperature T_m of a 2D complex plasma crystal ($T_m \sim 10 - 20$ eV in our condition [45, 46]). Consequently, the MCI heat source term requires the introduction of an activation temperature T_a well above T_m . It was indeed demonstrated that pair correlations are destroyed when the

monolayer temperature is well above the melting temperature [47, 48]. Accordingly, the fluid MCI heat source can be roughly modeled as a reaction rate governed by the Arrhenius law

$$\frac{Q(T)}{Cn_{2D}} = \frac{\gamma_{\text{MCI}}T_{\infty}}{C}e^{-T_a/T}, \quad (3)$$

which can be approximated by [42]

$$\frac{Q(T)}{Cn_{2D}} = \begin{cases} 0, & T < T_a, \\ \frac{\gamma_{\text{MCI}}T_{\infty}}{C}, & T \geq T_a, \end{cases} \quad (4)$$

where $\gamma_{\text{MCI}}T_{\infty}$ is the saturated fluid MCI heat source with the fluid MCI growth rate γ_{MCI} and the saturation temperature $T_{\infty} \sim 1 - 3$ keV. In a recent study on the melting front propagation in MCI-induced 2D crystal melting, the activation temperature was found to be $T_a \sim 150$ eV [42]. The saturation temperature T_{∞} arises from the thermal spreading of the monolayer which inhibits the mode crossing and consequently the fluid MCI growth rate [31].

Since $T_0 \ll T_a$, we can neglect T_0 . Eq. (1) can be then written in a dimensionless manner

$$\frac{\partial \Theta}{\partial \tau} = \lambda e^{-1/\Theta} - \Gamma \Theta + \frac{1}{\tilde{r}} \frac{\partial}{\partial \tilde{r}} \left(\tilde{r} \frac{\partial \Theta}{\partial \tilde{r}} \right), \quad (5)$$

where $\Theta = T/T_a$, $\tilde{r} = r/r^*$ with $r^{*2} = E_1/n_{2D}CT_a$, $\tau = t/t^*$ with $t^* = r^{*2}/\chi$. The initial condition becomes

$$\Theta(\tilde{r}, 0) = \frac{1}{2\pi\tilde{w}_{\text{MZ}}^2} \exp\left(-\frac{\tilde{r}^2}{2\tilde{w}_{\text{MZ}}^2}\right), \quad (6)$$

with $\tilde{w}_{\text{MZ}} = w_{\text{MZ}}/r^*$. The normalization $\int_0^{2\pi} \int_0^{\infty} \Theta(\tilde{r}, 0) \tilde{r} d\tilde{r} d\varphi = 1$ determines the characteristic length scale. Thus, in its dimensionless form, the problem is characterized by two numbers

$$\lambda = \frac{\gamma_{\text{MCI}}T_{\infty}E_1}{C^2\chi n_{2D}T_a^2} \quad (7)$$

and

$$\Gamma = \frac{2\gamma_d E_1}{C^2\chi n_{2D}T_a} = \frac{2\gamma_d}{\gamma_{\text{MCI}}} \frac{T_a}{T_{\infty}} \lambda. \quad (8)$$

Eq. (5) is similar to the one describing impulsive spot heating and thermal explosion in ordinary matter with the addition of a dimensionless damping coefficient Γ [42, 43]. When there is no damping and the heating of a reactive medium occurs within a sufficiently localized spot (so it can be accurately described with a Dirac distribution), the subsequent thermal evolution is characterized only by λ which identifies a bifurcation between two distinct regimes. When exceeding a critical threshold, [the heat equation exhibits rapid temperature growth](#). For a 2D system, the critical value is $\lambda_{\text{cr}}(\Gamma = 0) = 9.94$ [43]. The damping term increases the critical value: numerical estimates are, for example, $\lambda_{\text{cr}}(\Gamma = 1.5) \sim 17$

and $\lambda_{\text{cr}}(\Gamma = 2.5) \sim 21$. In our experimental conditions, we assume that the thermal diffusivity of the crystal was $\chi \sim 10$ mm²/s [16] and $\gamma_{\text{MCI}} \sim \gamma_g \sim 0.9$ s⁻¹. By fitting the temperature distribution after laser excitation with a 2D Gaussian for experiments near threshold, the width of the melted zone was $w_{\text{MZ}} \sim 1 - 2$ mm [49], which is noticeably smaller than the characteristic length $r^* \sim 4.5$ mm. These experimental parameters yield the value of $\Gamma \sim 2 - 4$ and, at threshold energy, $\lambda \sim 10 - 30$, in remarkable agreement with the theoretical estimate. Note that the width of the MZ has a significant effect on the energy threshold since at a given injected energy a wider spot results in a significant portion of the energy being distributed over particles with a kinetic temperature below the activation temperature. Moreover, for large melted spots ($w_{\text{MZ}} \geq r^*$), the problem is no longer characterized by a single dimensionless number and the threshold depends on the temperature of the melted spot and its size [43, 50].

In Fig. 6, the evolution of the temperature profile is presented for experiments 19 and 20 and the numerical solution of Eqs. (1) and (4). The input parameters have been chosen to reproduce qualitatively the experimental observations. As can be seen in all cases, the energy is transported from the MZ to the rest of the crystalline suspension. The instability provided energy to the microparticle suspension inside the fluid region which is partially transported in the crystal through heat conduction and partially dissipated through neutral damping. For these reasons, the size of the melted area can slightly increase even if the total input energy is below the required melting threshold. As reported in the previous section, when increasing the amount of injected energy while staying below threshold (for example, increasing the duration of the laser pulse), the crystallization is delayed. This behavior was also observed in the numerical solutions and can be explained by the amount of energy pumped by the fluid MCI into the melted spot which depends directly on its size. Indeed, crystallization can occur only after enough energy has been removed from the MZ. Consequently, this suppresses the fluid MCI heat flux (Fig. 6a and c). This transition period is longer for larger spots since a significantly larger amount of energy has to be removed due to the fluid MCI energy input. When the injected energy is slightly above the threshold, fluid MCI delivers more energy to the monolayer than what can be extracted away from the MZ which grows as a result (Fig. 6b and d). The melting pattern is then similar to the one observed in the regular (crystal) MCI induced melting of a crystal [29–32, 42].

In all experiments in which the melting was successfully induced, the MZ radius grew at a constant velocity. For \tilde{r} large enough in Eq. (5), the last term of the r.h.s. tends asymptotically towards $\partial^2\Theta/\partial\tilde{r}^2$, reducing the problem to one dimension. The reaction model (3) or (4) in the evolution equation (1) defines a bistable system, with two uniform stationary solutions (in the reduced version with $T_0 = 0$ and the rate equation (4),

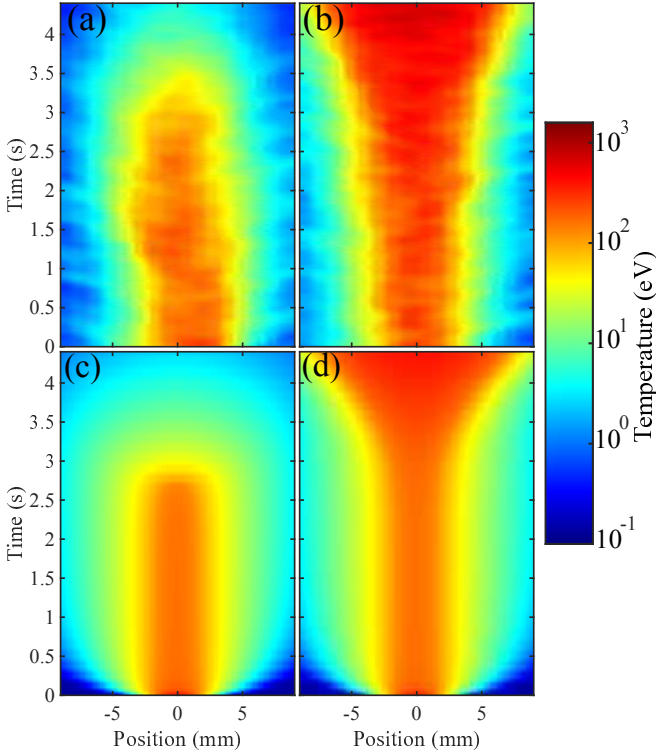


FIG. 6. (Color online) Evolution of the temperature profile. (a) Experiment 19: recrystallization, (b) Experiment 20: melting. Solution of Eqs. (1) using the reaction model (4): (c) slightly below threshold, (d) slightly above threshold. For the numerical profiles, the following parameters were used: $\chi = 9 \text{ mm}^2/\text{s}$, $\gamma_d = 1.2 \text{ s}^{-1}$, $\gamma_{\text{MCI}} = 0.9 \text{ s}^{-1}$, $T_\infty = 1800 \text{ eV}$, $T_a = 105 \text{ eV}$, $n_{2\text{D}} = 6.75 \text{ mm}^{-2}$, $C = 2$, $w_{\text{MZ}} = 1.15 \text{ mm}$ and (c) $E_1 = 40103 \text{ eV}$ ($\lambda = 24.2497$, $\Gamma = 3.7722$) and (d) $E_1 = 40103.7 \text{ eV}$ ($\lambda = 24.2506$, $\Gamma = 3.7722$).

these states are 0 and $\Theta_{\text{max}} = \lambda/\Gamma$. With inhomogeneous boundary conditions, the front profile is a heteroclinic connection between these two states, propagating at constant velocity v_{MZ} . As the MZ radius grows linearly, a self-similar solution $\Theta(\tilde{r}, \tau) = \Theta(X)$, with $X = \tilde{r} - \tilde{v}_{\text{MZ}}\tau$, where \tilde{v}_{MZ} is the dimensionless velocity of the melting front, can be obtained analytically using the approximation (4) [42]

$$\Theta(X) = \begin{cases} \exp(-\sigma_1 X), & X > 0, \\ \Theta_{\text{max}} + (1 - \Theta_{\text{max}}) \cdot \exp(-\sigma_2 X), & X \leq 0, \end{cases} \quad (9)$$

with $\sigma_1 = (\tilde{v}_{\text{MZ}}/2) + \sqrt{4\Gamma + \tilde{v}_{\text{MZ}}^2}/2 > 0$ and $\sigma_2 = (\tilde{v}_{\text{MZ}}/2) - \sqrt{4\Gamma + \tilde{v}_{\text{MZ}}^2}/2 < 0$. The boundary conditions are $\Theta(+\infty) = 0$ and $\Theta(-\infty) = \Theta_{\text{max}}$. The position of the melting front is given by $\Theta(0) = 1$ and its velocity is $\tilde{v}_{\text{MZ}} = -\partial_\tau \Theta / \partial_X \Theta$. It exists only if the two partial derivatives are continuous, giving the condition

$$(1 - \Theta_{\text{max}})\sigma_2 = \sigma_1. \quad (10)$$

The velocity of the melting front is then straightforwardly

obtained

$$\tilde{v}_{\text{MZ}} = \frac{\lambda - 2\Gamma}{\sqrt{\lambda - \Gamma}}. \quad (11)$$

For $\lambda > 2\Gamma$ (viz. $\Theta_{\text{max}} > 2$), the front velocity is positive, which corresponds to the melting of the monolayer, due to the fact that the final temperature is further away from the threshold T_a than the cold crystal is ($T_\infty - T_a > T_a - T_0 = T_a$). For $\Gamma < \lambda < 2\Gamma$ (viz. $1 < \Theta_{\text{max}} < 2$), the front velocity is negative, corresponding to recrystallization due to the fact that the melted state equilibrium temperature is closer to the activation threshold than the cold crystal is. The case $\lambda = 2\Gamma$ is the bifurcation case, for which the front would be stationary. It would be interesting to further investigate this range, recalling that model (4) is very crude and does not yield accurate values for the actual front velocity, though being qualitatively relevant. Under our experimental conditions, $\tilde{v}_{\text{MZ}} \sim 0.5 - 5$ or $v_{\text{MZ}} \sim 1 - 10 \text{ mm/s}$, which is in agreement with our measured value. This velocity yields the spatial decay exponents for the front, $\sigma_1 = (\lambda - \Gamma)/\sqrt{\lambda - \Gamma}$ and $\sigma_2 = \tilde{v}_{\text{MZ}} - \sigma_1 = -\Gamma/\sqrt{\lambda - \Gamma}$. The slope of the front and the temperature difference Θ_{max} yield an estimate $\Theta_{\text{max}}/\sigma_1 = \lambda/(\Gamma\sqrt{\lambda - \Gamma})$ for its width. Given the experimental ranges of λ and Γ , the front width is $\Theta_{\text{max}}/\sigma_1 \sim 1 - 3$ or in physical units $4.5 - 13.5 \text{ mm}$. This value is close to the one observed in Figs. 4 and 6.

Finally, in the frame of our model, the evolution of the total kinetic energy in the monolayer K_{tot} can be obtained

$$K_{\text{tot}}(t) = 2\pi n_{2\text{D}} \int_0^\infty T(r, t) r dr. \quad (12)$$

Multiplying Eq. (1) by $n_{2\text{D}}$ and integrating over space, one obtains

$$\dot{K}_{\text{tot}} + \frac{2\gamma_d}{C} K_{\text{tot}} = S \quad (13)$$

where the heat source S due to the fluid mode-coupling instability is (using the reaction model (4))

$$S = 2\pi \int_0^\infty \frac{Q(T)}{C} r dr \simeq 2\pi n_{2\text{D}} \frac{\gamma_{\text{MCI}} T_\infty}{C} \int_0^{r_a(t)} r dr \\ \simeq \pi n_{2\text{D}} \frac{\gamma_{\text{MCI}} T_\infty}{C} r_a^2(t) = \pi n_{2\text{D}} \frac{\gamma_{\text{MCI}} T_\infty}{C} v_{\text{MZ}}^2 t^2, \quad (14)$$

where $r_a(t)$ is the front radius, such that $T(r_a, t) = T_a$. The solution of Eq. (13) is trivial and one immediately sees that, in the limit $t \rightarrow \infty$, $K_{\text{tot}} \propto t^2$. This result cannot be confirmed at the present time by experimental observations since the video recordings of the laser-induced melting were not long enough. In addition, using the reaction model (4), the stage of exponential growth reported in the experiments is lost. It has indeed been reported that, during MCI-induced melting in crystals, the microparticles kinetic temperature in the MZ grows exponentially until it saturates [32]. Moreover, in the

present study, the total kinetic energy growth in the FoV seems to be nearly exponential (even though the videos were not long enough to recover the kinetic energy evolution over a significant energy interval to draw a firm conclusion). However, using the reaction model (3), the stage of exponential growth can be recovered. Indeed, the “source term” in (5) is

$$\Sigma(\Theta) = \lambda \exp(-1/\Theta) - \Gamma\Theta. \quad (15)$$

For $\lambda > \Gamma \exp(1)$ (which is always the case for $\lambda > \lambda_{cr}$), the source term Σ has two nonzero real roots: the unstable one $\Theta_1 = -1/W_{-1}(-\Gamma/\lambda) < 1$ and the stable one $\Theta_2 = -1/W_0(-\Gamma/\lambda) > 1$ where W_k is the k^{th} branch of the Lambert W function. The maximum of Σ occurs at $\Theta_{gm} = -1/(2W_0(-0.5\sqrt{\Gamma/\lambda}))$ such that $\Theta_1 < \Theta_{gm} < \Theta_2$. Since $\Sigma'(\Theta_1) > 0$, the stage of exponential growth can be explained by the lower, unstable root. In the early stage of the instability, the dimensionless heat equation can be approximated by

$$\frac{\partial \Theta}{\partial \tau} - \frac{1}{\tilde{r}} \frac{\partial}{\partial \tilde{r}} \left(\tilde{r} \frac{\partial \Theta}{\partial \tilde{r}} \right) \simeq \Sigma'(\Theta_1) \cdot (\Theta - \Theta_1). \quad (16)$$

Given the experimental ranges of λ and Γ , the unstable root is $0.28 < \Theta_1 < 0.34$ and the instability growth rate is $5 < \Sigma'(\Theta_1) < 8$. Using our experimental parameters, the time scale is $t^* = 2 - 3$ s giving a growth rate $1.7 \text{ s}^{-1} < \gamma_g < 4 \text{ s}^{-1}$. This range slightly overestimates the reported experimental value but, given the simplicity of our reaction rate model, it is in remarkable agreement. It nevertheless calls for more investigations and better modeling of the fluid MCI heat source in order to obtain the full physical picture of the energy input due to the fluid MCI.

V. CONCLUSION

To conclude, we have experimentally demonstrated that wake-mediated resonant mode coupling can be in-

duced in a 2D plasma crystal through a localized pulsed laser heating. Due to the co-existence of a stable crystalline state and a melted state experiencing fluid MCI, this heating can trigger a rapid full melting of the crystalline monolayer. In a stable crystal (with respect to crystalline MCI), an energy threshold was observed. Below the threshold, recrystallization was always observed with a transition period which grew longer when approaching the threshold. The localized fluid MCI could not pump enough energy to the microparticle suspension to maintain the fluid state and propagate through the crystal. Above the threshold, the full melting of the crystal was observed due to the activated fluid MCI (i.e. the crystalline order of the whole complex plasma monolayer was rapidly destroyed). Remarkable similarities with impulsive spot heating in ordinary reactive matter were reported.

In future investigations, detailed studies of the threshold for various crystal parameters and laser spot sizes will be performed. The influence of the temperature of the fluid state on the MCI growth rate will be of particular interest.

ACKNOWLEDGMENTS

This work was partially supported by the French-German PHC PROCOPE Program (Project No. 35325NA/57211784). The authors would like to thank Prof. E. Thomas Jr and Dr I. Laut for fruitful discussions and suggestions. We would also like to thank the anonymous referees who have helped us to improve the article.

-
- [1] A. Bouchoule, *Dusty Plasmas: Physics, Chemistry and Technological impacts in Plasma Processing* (Wiley, New York, 1999).
 - [2] P. K. Shukla and A. A. Mamun, *Introduction to dusty plasma* (IOP Publishing, Bristol, 2002).
 - [3] G. E. Morfill and A. V. Ivlev, *Rev. Mod. Phys.* **81**, 1353 (2009).
 - [4] A. Brattli and O. Havnes, *Journal of Vacuum Science & Technology A* **14**, 644 (1996).
 - [5] A. A. Samarian and B. W. James, *Phys. Lett. A* **287**, 125 (2001).
 - [6] D. H. E. Dubin, *Phys. Plasmas* **7**, 3895 (2000).
 - [7] A. Melzer, S. Nunomura, D. Samsonov, Z. W. Ma, and J. Goree, *Phys. Rev. E* **62**, 4162 (2000).
 - [8] S. Nunomura, D. Samsonov, and J. Goree, *Phys. Rev. Lett.* **84**, 5141 (2000).
 - [9] D. Samsonov, J. Goree, H. M. Thomas, and G. E. Morfill, *Phys. Rev. E* **61**, 5557 (2000).
 - [10] J. H. Chu and L. I, *Phys. Rev. Lett.* **72**, 4009 (1994).
 - [11] H. Thomas, G. E. Morfill, V. Demmel, J. Goree, B. Feuerbacher, and D. Möhlmann, *Phys. Rev. Lett.* **73**, 652 (1994).
 - [12] V. A. Schweigert, I. V. Schweigert, A. Melzer, A. Homann, and A. Piel, *Phys. Rev. Lett.* **80**, 5345 (1998).
 - [13] A. Melzer, A. Homann, and A. Piel, *Phys. Rev. E* **53**, 2757 (1996).
 - [14] A. Melzer, V. A. Schweigert, I. V. Schweigert, A. Homann, S. Peters, and A. Piel, *Phys. Rev. E* **54**,

- R46 (1996).
- [15] H. M. Thomas and G. E. Morfill, *Nature* **379**, 806 (1996).
- [16] V. Nosenko, S. Zhdanov, A. V. Ivlev, G. Morfill, J. Goree, and A. Piel, *Phys. Rev. Lett.* **100**, 025003 (2008).
- [17] D. Samsonov, S. Zhdanov, and G. Morfill, *Physical Review E (Statistical, Nonlinear, and Soft Matter Physics)* **71**, 026410 (2005).
- [18] K. Qiao and T. W. Hyde, *Phys. Rev. E* **68**, 046403 (2003).
- [19] B. Liu, K. Avinash, and J. Goree, *Phys. Rev. Lett.* **91**, 255003 (2003).
- [20] L. Couëdel, V. Nosenko, S. K. Zhdanov, A. V. Ivlev, H. M. Thomas, and G. E. Morfill, *Physical Review Letters* **103**, 215001 (2009).
- [21] S. Nunomura, J. Goree, S. Hu, X. Wang, A. Bhattacharjee, and K. Avinash, *Phys. Rev. Lett.* **89**, 035001 (2002).
- [22] S. Nunomura, S. Zhdanov, G. E. Morfill, and J. Goree, *Phys. Rev. E* **68**, 026407 (2003).
- [23] S. Nunomura, S. Zhdanov, D. Samsonov, and G. Morfill, *Phys. Rev. Lett.* **94**, 045001 (2005).
- [24] O. Ishihara and S. V. Vladimirov, *Physics of Plasmas* **4**, 69 (1997).
- [25] S. Nunomura, T. Misawa, N. Ohno, and S. Takamura, *Phys. Rev. Lett.* **83**, 1970 (1999).
- [26] A. Melzer, V. A. Schweigert, and A. Piel, *Physica Scripta* **61**, 494 (2000).
- [27] G. A. Hebner and M. E. Riley, *Phys. Rev. E* **69**, 026405 (2004).
- [28] A. V. Ivlev and G. Morfill, *Phys. Rev. E* **63**, 016409 (2000).
- [29] S. K. Zhdanov, A. V. Ivlev, and G. E. Morfill, *Phys. Plasmas* **16**, 083706 (2009).
- [30] L. Couëdel, S. K. Zhdanov, A. V. Ivlev, V. Nosenko, H. M. Thomas, and G. E. Morfill, *Phys. Plasmas* **18**, 083707 (2011).
- [31] A. V. Ivlev, S. K. Zhdanov, M. Lampe, and G. E. Morfill, *Phys. Rev. Lett.* **113**, 135002 (2014).
- [32] T. B. Röcker, L. Couëdel, S. K. Zhdanov, V. Nosenko, A. V. Ivlev, H. M. Thomas, and G. E. Morfill, *EPL (Europhysics Letters)* **106**, 45001 (2014).
- [33] L. Couëdel, S. Zhdanov, V. Nosenko, A. V. Ivlev, H. M. Thomas, and G. E. Morfill, *Phys. Rev. E* **89**, 053108 (2014).
- [34] V. Steinberg, R. Sütterlin, A. V. Ivlev, and G. Morfill, *Phys. Rev. Lett.* **86**, 4540 (2001).
- [35] V. Nosenko, A. V. Ivlev, S. K. Zhdanov, M. Fink, and G. E. Morfill, *Physics of Plasmas* **16**, 083708 (2009).
- [36] L. Couëdel, D. Samsonov, C. Durniak, S. Zhdanov, H. M. Thomas, G. E. Morfill, and C. Arnas, *Phys. Rev. Lett.* **109**, 175001 (2012).
- [37] t_{th} slightly depends on the laser pulse duration and the laser power; the chosen t_{th} corresponds to the value at which the microparticles are thermalized in all experiments.
- [38] For the measured crystal parameters, the melting occurs when the microparticle mean kinetic energy is around 10-20 eV [45, 46]. It slightly underestimates the size of the MZ but catches the main features of its evolution without including particles in the crystalline state.
- [39] In logarithmic scale, t_{tr} is the time at which the straight line with a negative slope fitting the exponential decay of the energy at large t crossed the line defined by $K_t = K_t(t_{on} + t_{th})$.
- [40] γ_g is obtained by fitting the following function to the total energy: $K_t(t + t_{on} + t_{th}) = K_t(t_{on} + t_{th}) + A \exp(\gamma_g t)$ where A is a positive constant.
- [41] J. D. Williams, E. Thomas, L. Couëdel, A. V. Ivlev, S. K. Zhdanov, V. Nosenko, H. M. Thomas, and G. E. Morfill, *Phys. Rev. E* **86**, 046401 (2012).
- [42] S. O. Yurchenko, E. V. Yakovlev, L. Couëdel, N. P. Kryuchkov, A. M. Lipaev, V. N. Naumkin, A. Y. Kislov, P. V. Ovcharov, K. I. Zaytsev, E. V. Vorob'ev, G. E. Morfill, and A. V. Ivlev, *Phys. Rev. E* **96**, 043201 (2017).
- [43] A. Ivlev, T. Röcker, A. Vasyunin, and P. Caselli, *The Astrophysical Journal* **805**, 59 (2015).
- [44] B. Liu, J. Goree, V. Nosenko, and L. Boufendi, *Phys. Plasmas* **10**, 9 (2003).
- [45] P. Hartmann, G. J. Kalman, Z. Donkó, and K. Kutasi, *Phys. Rev. E* **72**, 026409 (2005).
- [46] N. P. Kryuchkov, S. A. Khrapak, and S. O. Yurchenko, *J. Chem. Phys.* **146**, 134702 (2017).
- [47] V. E. Fortov, O. S. Vaulina, and O. F. Petrov, *Plasma physics and controlled fusion* **47**, B551 (2005).
- [48] T. E. Sheridan, *Physics of Plasmas* **16**, 083705 (2009).
- [49] According to Fig. 5, the area defined by R_{MZ} includes $\sim 90\%$ of the energy, giving $R_{MZ} \sim 2w_{MZ}$ which is in agreement with the measured values.
- [50] A. Merzhanov, *Combustion and Flame* **10**, 341 (1966).