



**HAL**  
open science

## Interaction between lombricompost and AMF communities: consequences on metals accumulation and bioaccessibility in urban agriculture crops

Antoine Pierart, Camille Dumat, Nathalie Séjalon-Delmas

### ► To cite this version:

Antoine Pierart, Camille Dumat, Nathalie Séjalon-Delmas. Interaction between lombricompost and AMF communities: consequences on metals accumulation and bioaccessibility in urban agriculture crops. Act for sustainable Urban Agricultures (UA): vector for ecological transition, Jun 2017, Toulouse, France. pp.1-1, 2017. hal-01662624

**HAL Id: hal-01662624**

**<https://hal.science/hal-01662624v1>**

Submitted on 13 Dec 2017

**HAL** is a multi-disciplinary open access archive for the deposit and dissemination of scientific research documents, whether they are published or not. The documents may come from teaching and research institutions in France or abroad, or from public or private research centers.

L'archive ouverte pluridisciplinaire **HAL**, est destinée au dépôt et à la diffusion de documents scientifiques de niveau recherche, publiés ou non, émanant des établissements d'enseignement et de recherche français ou étrangers, des laboratoires publics ou privés.



## Open Archive TOULOUSE Archive Ouverte (OATAO)

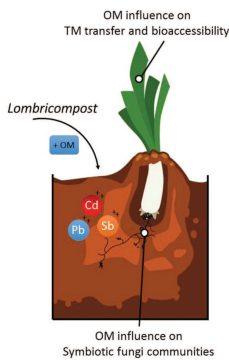
OATAO is an open access repository that collects the work of Toulouse researchers and makes it freely available over the web where possible.

This is an author-deposited version published in : <http://oatao.univ-toulouse.fr/>  
Eprints ID : 18334

**To cite this version** : Pierart, Antoine and Dumat, Camille and Séjalon-Delmas, Nathalie *Interaction between lombricompost and AMF communities: consequences on metals accumulation and bioaccessibility in urban agriculture crops.* (2017) In: Act for sustainable Urban Agricultures (UA) : vector for ecological transition, 6 June 2017 - 9 June 2017 (Toulouse, France). (Unpublished)

Any correspondence concerning this service should be sent to the repository administrator: [staff-oatao@listes-diff.inp-toulouse.fr](mailto:staff-oatao@listes-diff.inp-toulouse.fr)

# Interaction between lombricompost and AMF communities: consequences on metals accumulation and bioaccessibility in urban agriculture crops

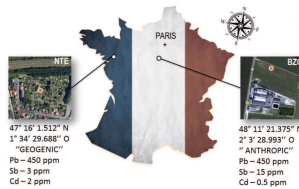


## Context

- Two-thirds of the population leaves currently in urban areas, and this trend is increasing
- A will of self-growing food sprout in response to the economic/ecologic crisis
- Soil/food quality for urban agriculture (UA) is a major concern due to pollution
- Persistent trace metals (TM), such as cadmium (Cd) and lead (Pb) are common pollutants
- Antimony (Sb) is an emerging anthropic contaminant
- Biofertilizers and organic amendments are used by gardeners to increase yields
- Their properties and reactivity can affect soil microorganisms and TM mobility

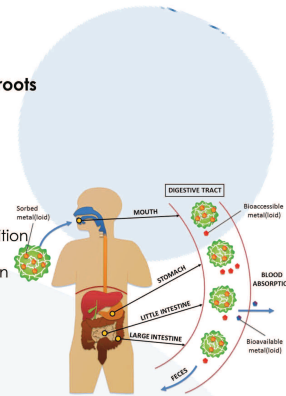
## Objectives

- Study the effect of lombricompost on:**
- 1- arbuscular mycorrhizal fungi (AMF) communities in plant roots
  - 2- TM phytoaccumulation and human bioaccessibility.



## Material and methods

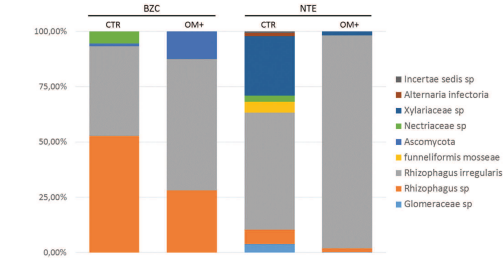
- Scale** - Microcosm pot experiment under greenhouse condition  
**Plant** - Organic leek (*Allium porrum* L.), 5 months  
**Soil** - Comparison of anthropic and geogenic contamination  
**Treatments** - ± Lombricompost, to increase soil % OM by 1%  
**Measurements** - Total TM in plant  
- Bioaccessible fraction (BARGE method)  
- AMF community (Illumina MiSeq)  
**Analysis** - Mothur & Usearch for AMF sequences analysis



## Results

### > Effects of Lombricompost on Fungal community

- Important changes in root fungal community (Both soils)
- *Rhizoglyphus irregularis* increased (BZC+25% & NTE+40%)
- *Funnelliformis mosseae* disappeared in NTE soil
- Decrease of other *Rhizoglyphus* species and *Glomeraceae* species.



AMF communities associated with amended (+OM) and control (CTR) leek roots

### > Effects of Lombricompost on TM human bioaccessibility

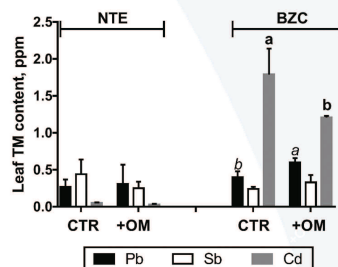
- No effect for all TM

Effect of Lombricompost (OM+) on TM bioaccessible fraction

Plant	Soil	Treatment	% Pb	% Sb	% Cd
LEEK	NTE	CTR	65.7 ± 9.3	20.6 ± 6	114 ± 34
		OM+	54.6 ± 15.8	20.1 ± 1.6	104 ± 11
BZC	CTR	CTR	66.4 ± 7.5	19.8 ± 4.1	91 ± 4
		OM+	59 ± 12.2	15 ± 1.5	95 ± 3

### > Effect of Lombricompost on TM accumulation

- BZC soil (Anthropic Pb/Sb contamination)
  - Sb - No effect
  - Cd - Decrease
  - Pb - Increase
- NTE soil (Geogenic Pb/Sb contamination)
  - Sb/Pb/Cd - No effect
- Pb accumulation was low compared to soil total content



Lombricompost affected TM phytoavailability, BUT, the human bioaccessibility was no affected in plant.



Important shift of symbiotic fungal communities, impacted species can influence TM mobility and phytoaccumulation. Field trials is needed, to enhance hazard recommendations for gardeners