



HAL
open science

Has Rennes a heat island? From sensors and climate models to remote sensing and ecology issues.

Xavier Foissard, Alban Thomas, Jean Nabucet, Hervé Quénol, Vincent Dubreuil, Solène Croci

► To cite this version:

Xavier Foissard, Alban Thomas, Jean Nabucet, Hervé Quénol, Vincent Dubreuil, et al.. Has Rennes a heat island? From sensors and climate models to remote sensing and ecology issues.. International Long Term Ecological Research Network & LTER-France (Zones Ateliers Network & Critical Zone Observatories) joint conference , Oct 2017, Nantes, France. hal-01662257

HAL Id: hal-01662257

<https://hal.science/hal-01662257>

Submitted on 12 Dec 2017

HAL is a multi-disciplinary open access archive for the deposit and dissemination of scientific research documents, whether they are published or not. The documents may come from teaching and research institutions in France or abroad, or from public or private research centers.

L'archive ouverte pluridisciplinaire **HAL**, est destinée au dépôt et à la diffusion de documents scientifiques de niveau recherche, publiés ou non, émanant des établissements d'enseignement et de recherche français ou étrangers, des laboratoires publics ou privés.

Has Rennes a heat island? From sensors and climate models to remote sensing and ecology issues.

Foissard X.
Thomas A.
Nabucet J.
Quénol H.
Dubreuil V.
and Croci S.

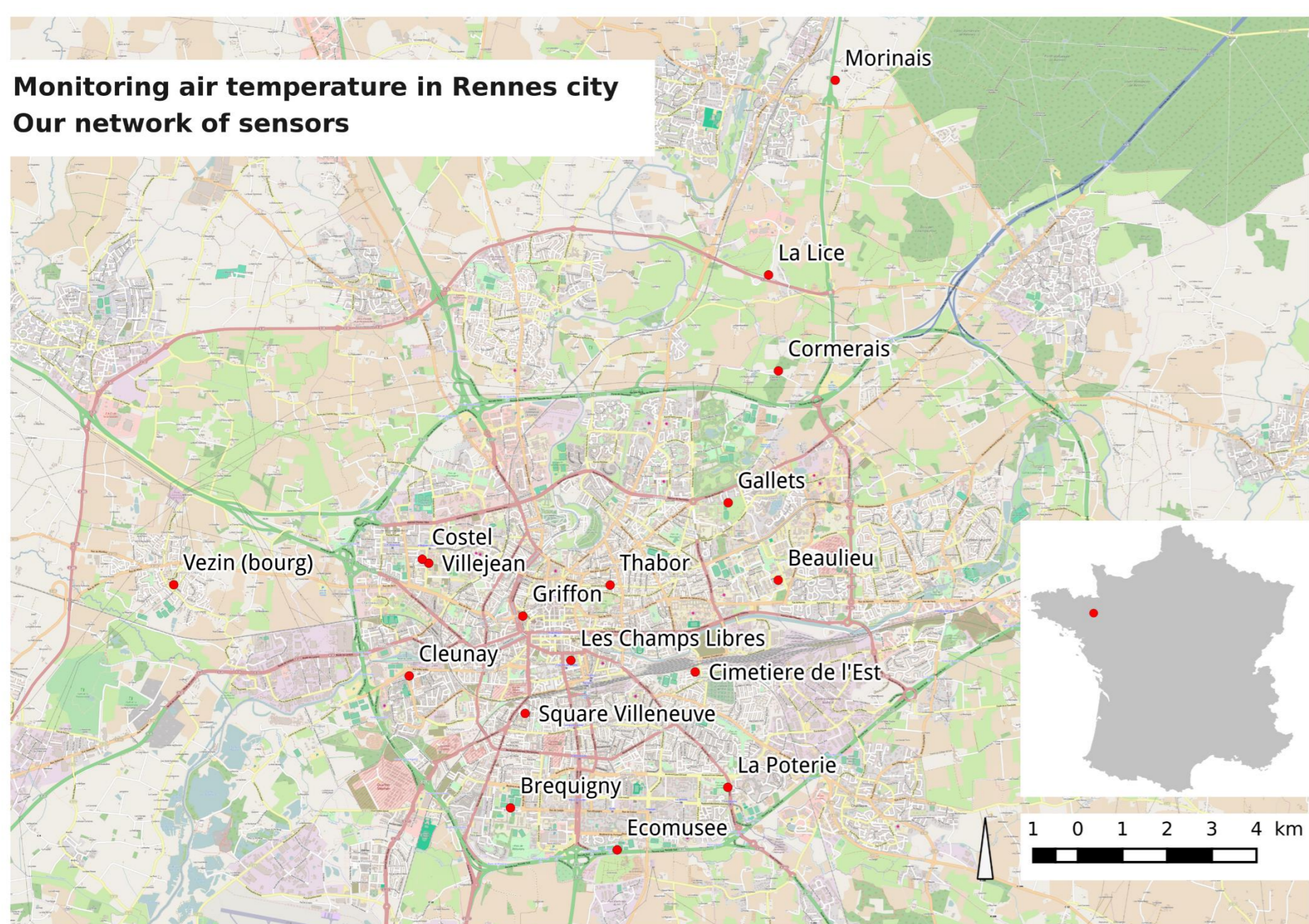
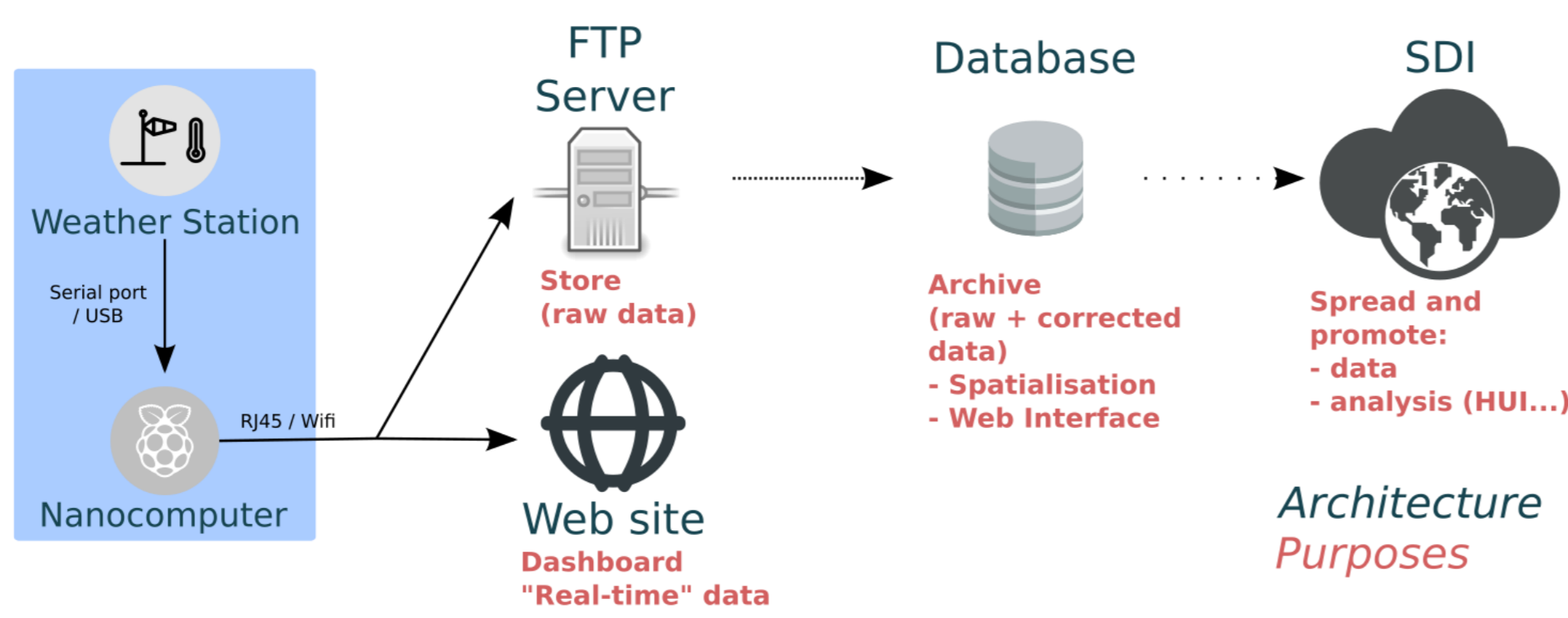
CNRS, Université de Rennes 2,
UMR LETG, Place du Recteur
Henri Le Moal, 35043 Rennes
Cedex, France.

Network of sensors

Air temperature is monitored in Rennes city (Brittany, France, CNRS Zone Atelier Armorique) with 1st measures in 2003.

Our network: ~20 permanent weather stations (+ temporary mobile sensors)

Data collected using cheap nanocomputers



An open-source application to https://bitbucket.org/thomas_a/rpi_meteo/

- check weather station's state
- re-configure station
- gather & store data
- Send data to FTP & website

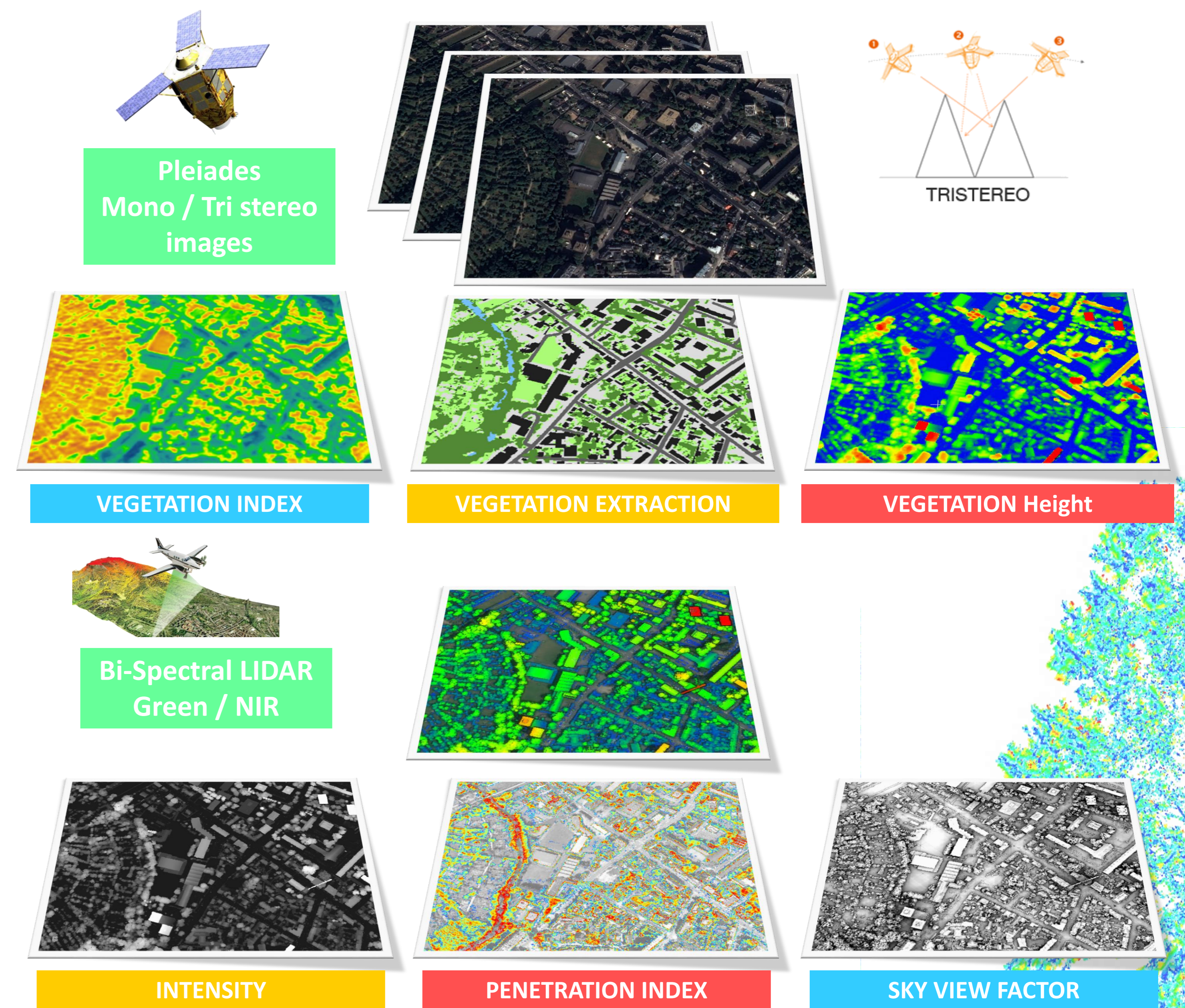
-> improve data quality

Stations throughout the city to illustrate different neighborhood: center, residences, suburban, parks...

Watch out: https://osur.univ-rennes1.fr/meteo_rennes/

Climate & Remote sensing

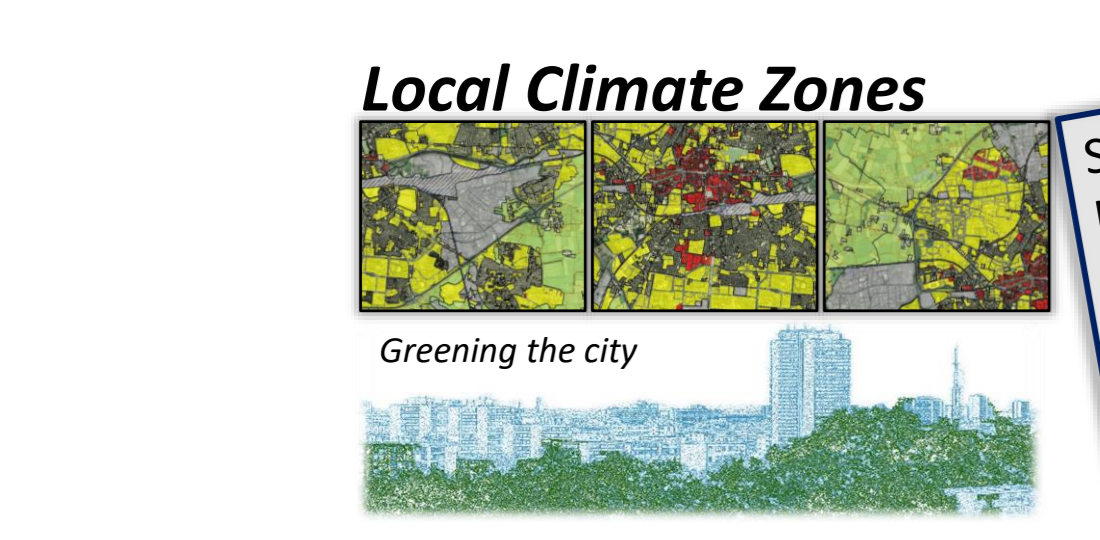
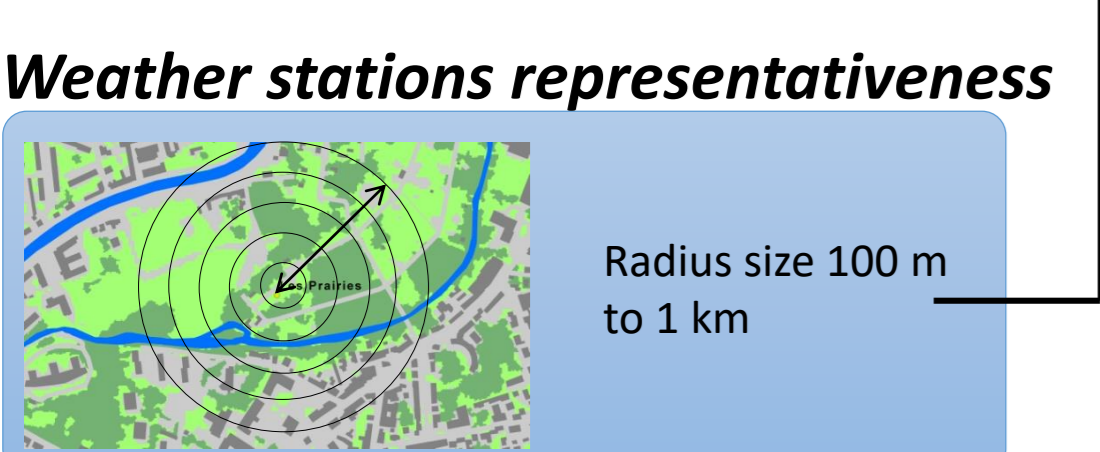
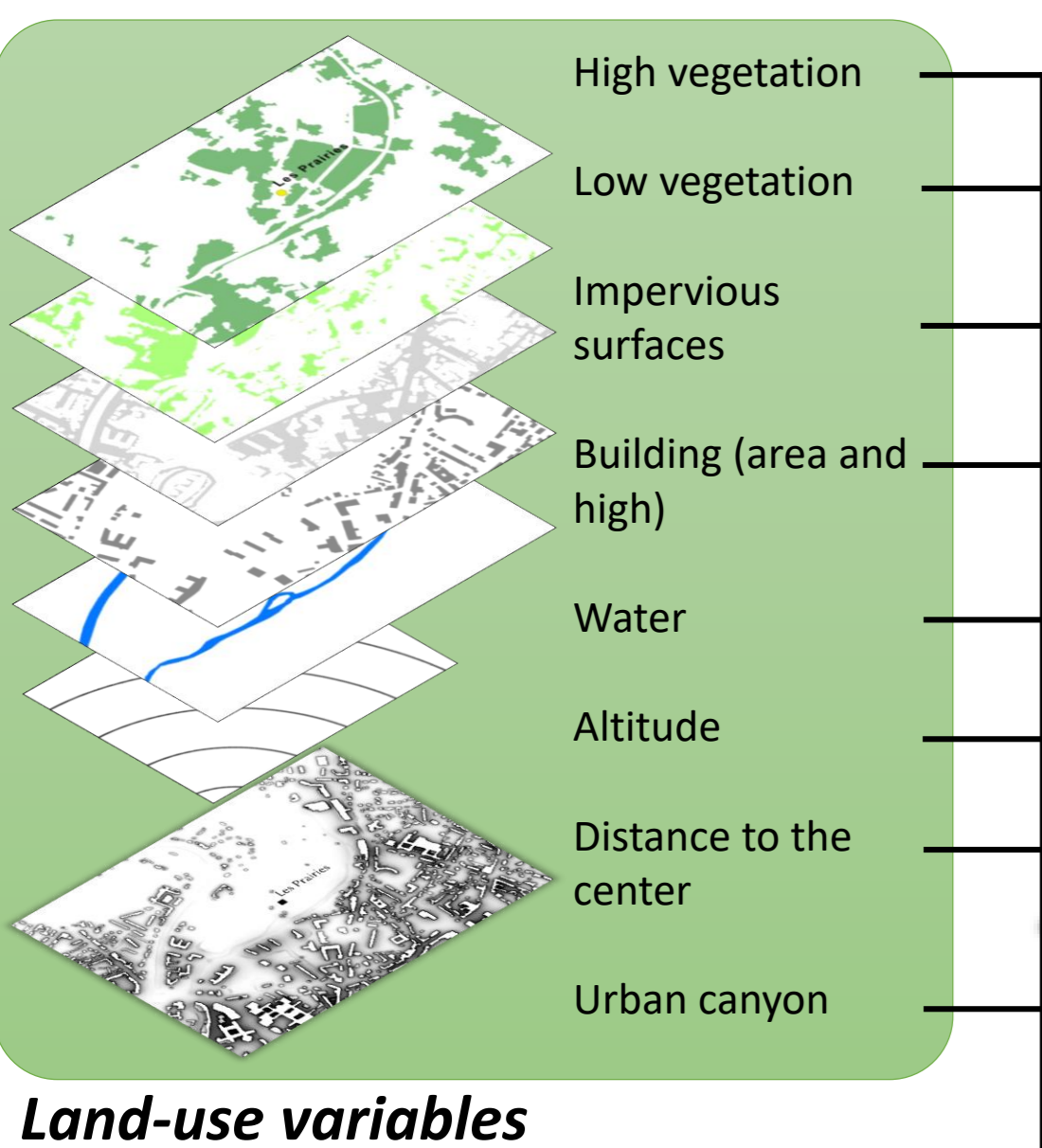
This sensors network was also used to model the local climate at fine scale based on remote sensing data analysis in 2D and 3D.



Linking the UHI observations and the land-use context.

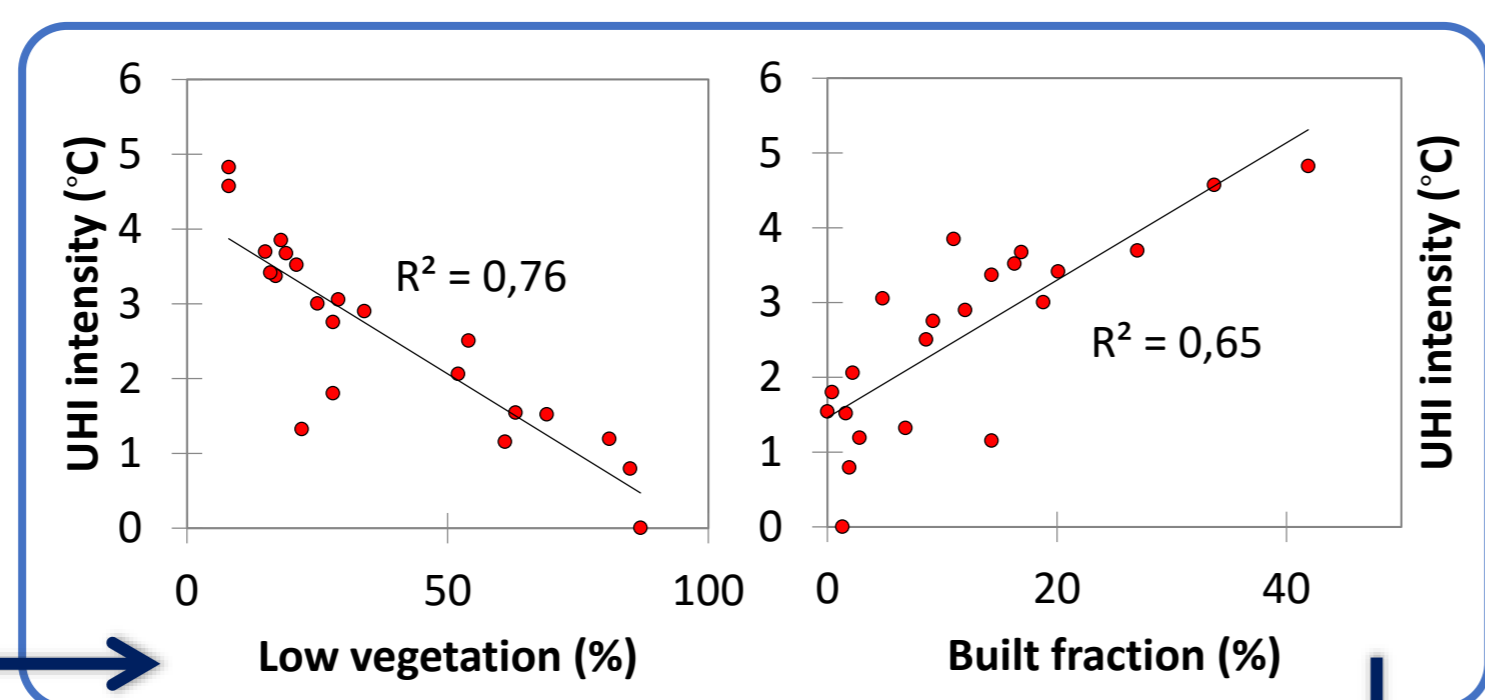
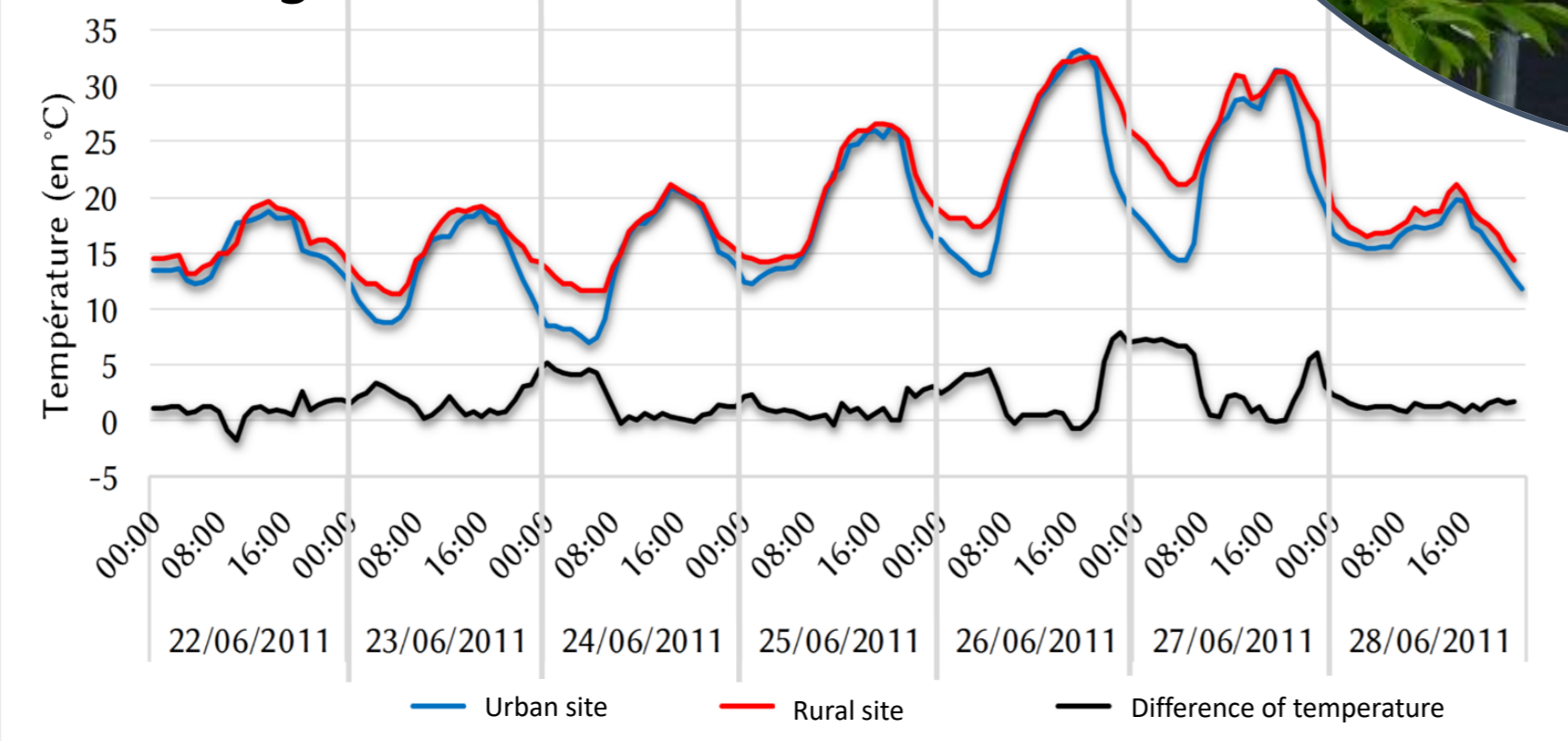
Spatial variability

Multi-criteria method for a spatial modelling of the UHI

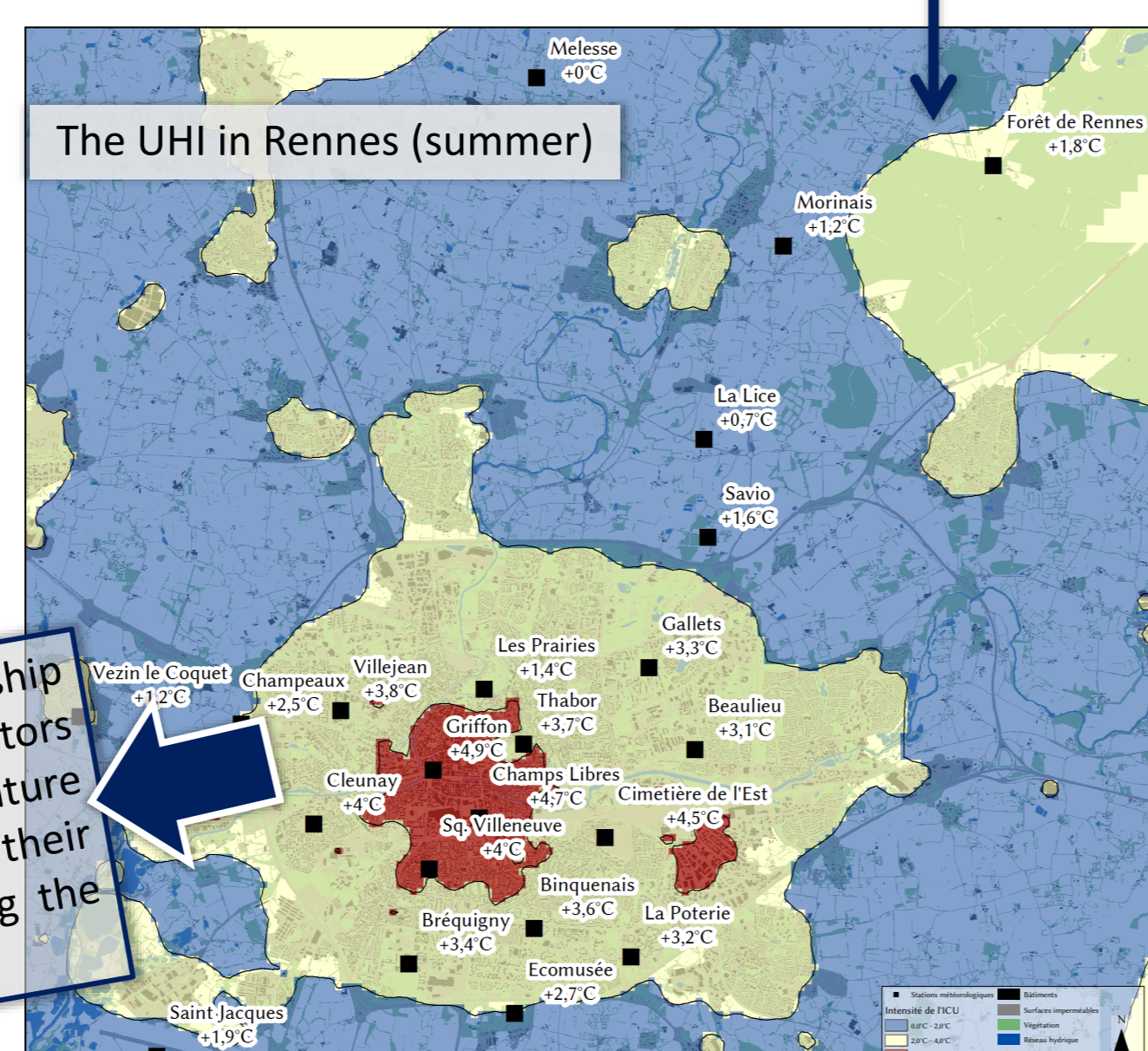


Temporal variability

Analysis of the UHI intensity according to weather conditions



Fitting the model



Applying the model : analysis of the UHI pattern

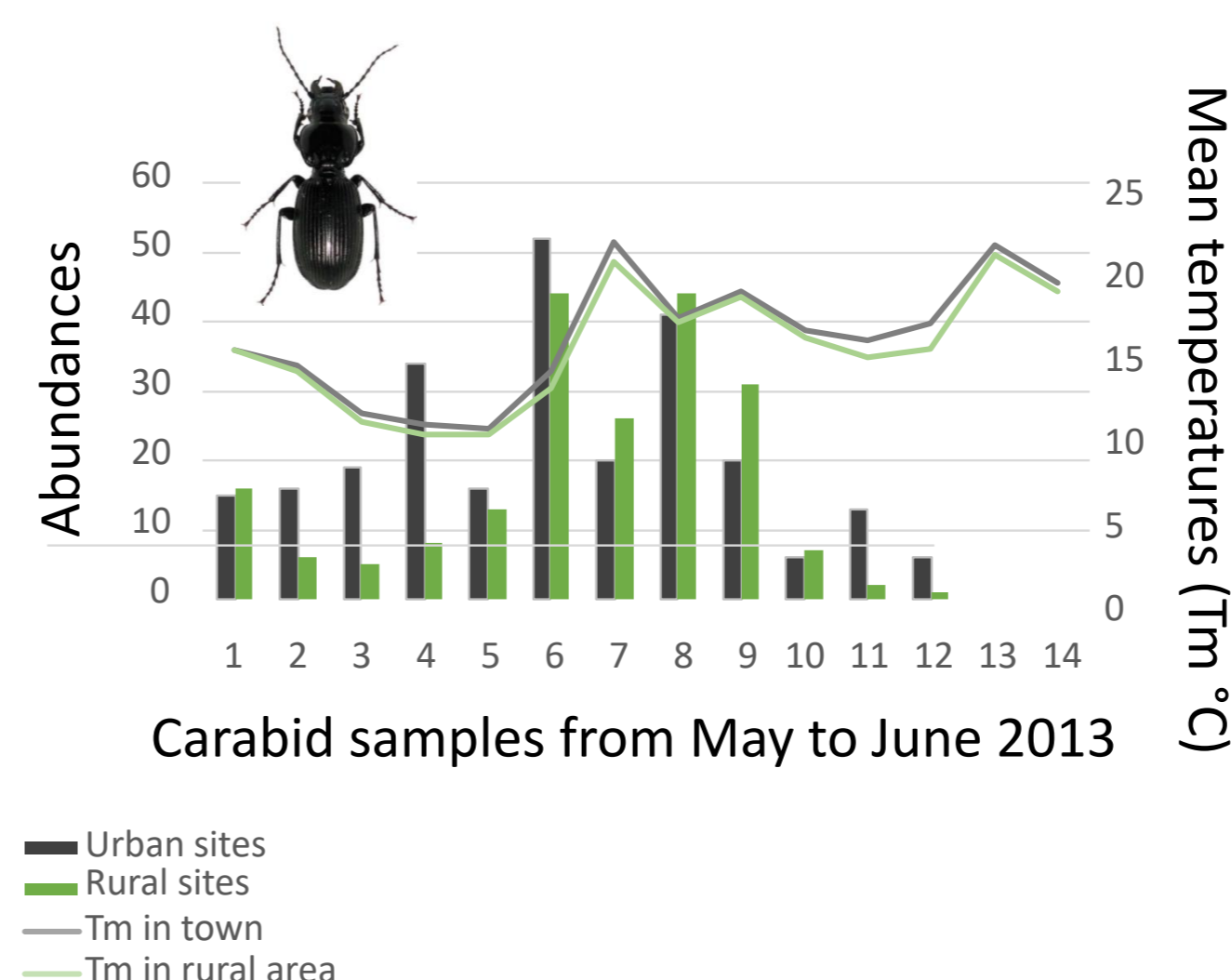
Climate model

Ecologists and climatologists now explore together the effects of the UHI on carabid beetles species.

Effect on Carabid beetles communities



Effects on one species: Pterostichus madidus



P. madidus seems to be active earlier in urban woods than in rural ones ($Khi^2 = 29.9, p < 0.001$).
=> Link with climate is being analysed.

Data acquisition

In each of the 19 woods distributed from the town-centre to the rural surroundings:

1 Tinytag for air temperature 2m high



6 pitfall traps collected every 5 days from May to July 2013



Climate & Urban biodiversity

