



**HAL**  
open science

## Simulation Approach for Energy Management in Wireless Sensor Networks

Yohann Rioual, Jean-Philippe Diguët, Johann Laurent, Eric Senn

► **To cite this version:**

Yohann Rioual, Jean-Philippe Diguët, Johann Laurent, Eric Senn. Simulation Approach for Energy Management in Wireless Sensor Networks. BEE Week 2017, Nov 2017, Bordeaux, France. hal-01654661

**HAL Id: hal-01654661**

**<https://hal.science/hal-01654661>**

Submitted on 4 Dec 2017

**HAL** is a multi-disciplinary open access archive for the deposit and dissemination of scientific research documents, whether they are published or not. The documents may come from teaching and research institutions in France or abroad, or from public or private research centers.

L'archive ouverte pluridisciplinaire **HAL**, est destinée au dépôt et à la diffusion de documents scientifiques de niveau recherche, publiés ou non, émanant des établissements d'enseignement et de recherche français ou étrangers, des laboratoires publics ou privés.

# SIMULATION APPROACH FOR ENERGY MANAGEMENT IN WIRELESS SENSOR NETWORKS

Yohann Rioual, Jean-Philippe Diguet, Johann Laurent, Eric Senn

Lab-STICC, CNRS UMR 6285, Université de Bretagne Sud, Lorient, France



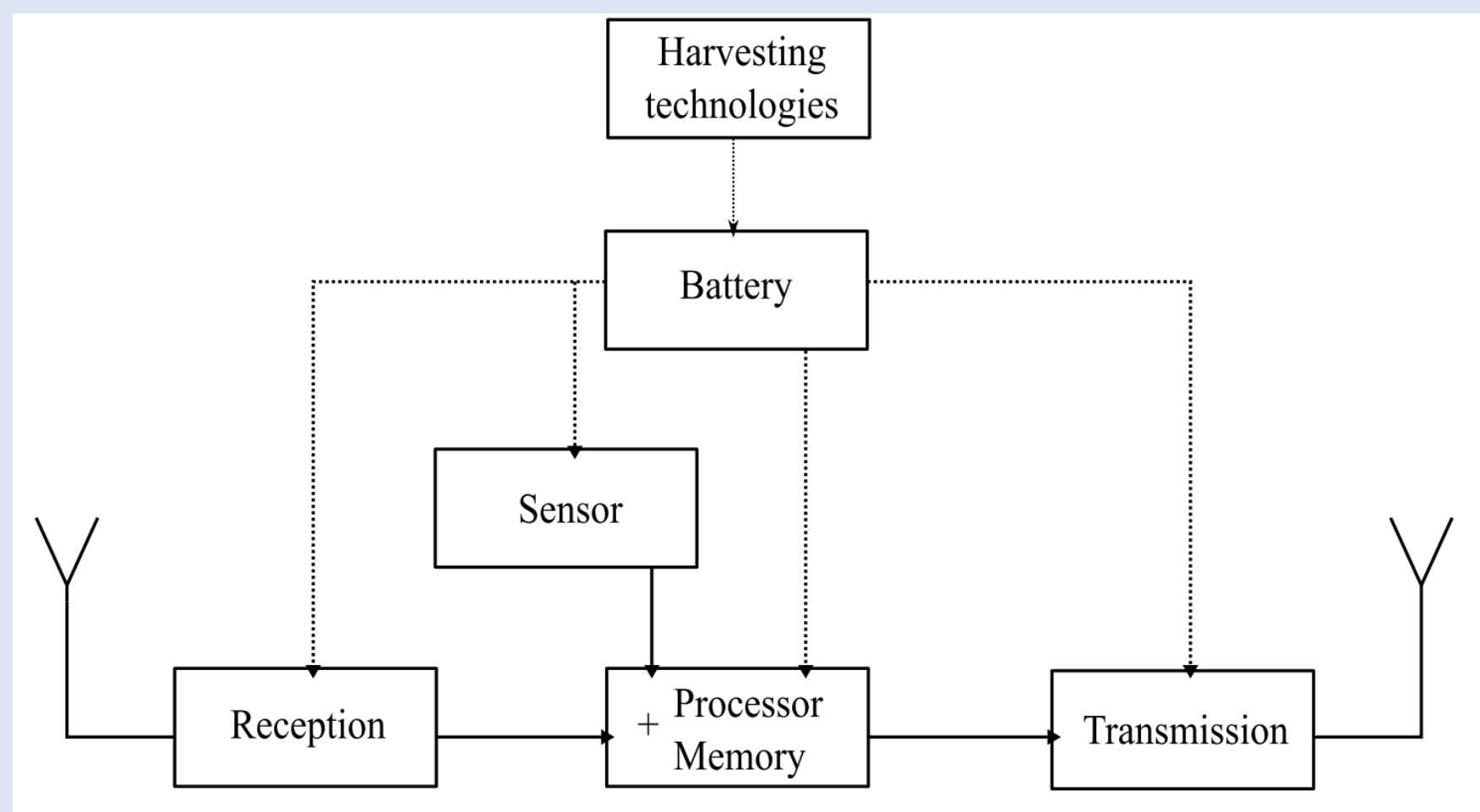
## Introduction

Sensor nodes are widely used in many applications :

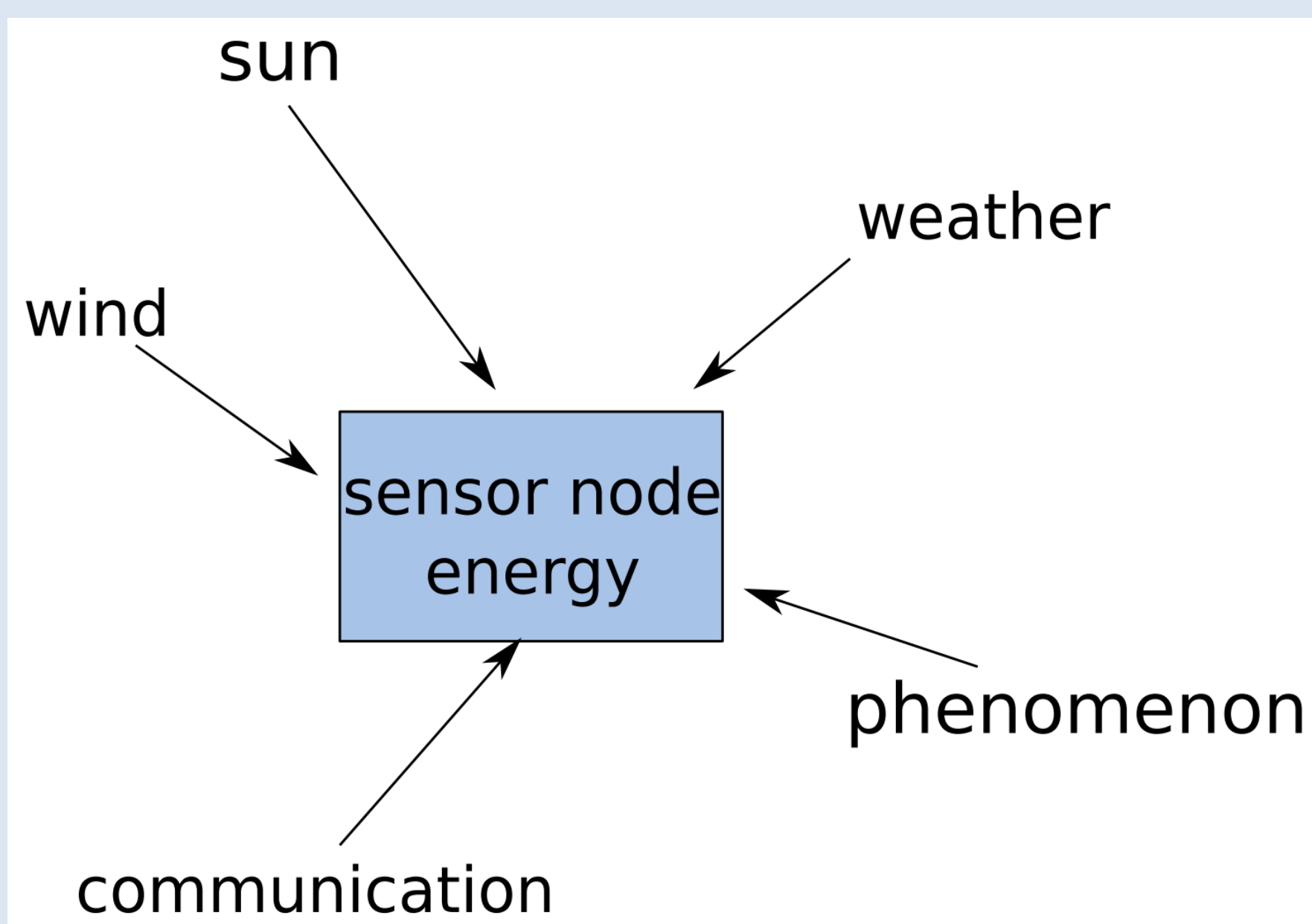
- Environmental monitoring
- Predictive maintenance
- Healthcare
- Smart grid
- Enhanced safety & security
- ...

Sensor nodes are composed of several unit. Modeling each component is hard and takes time.

### Main components of a sensor node

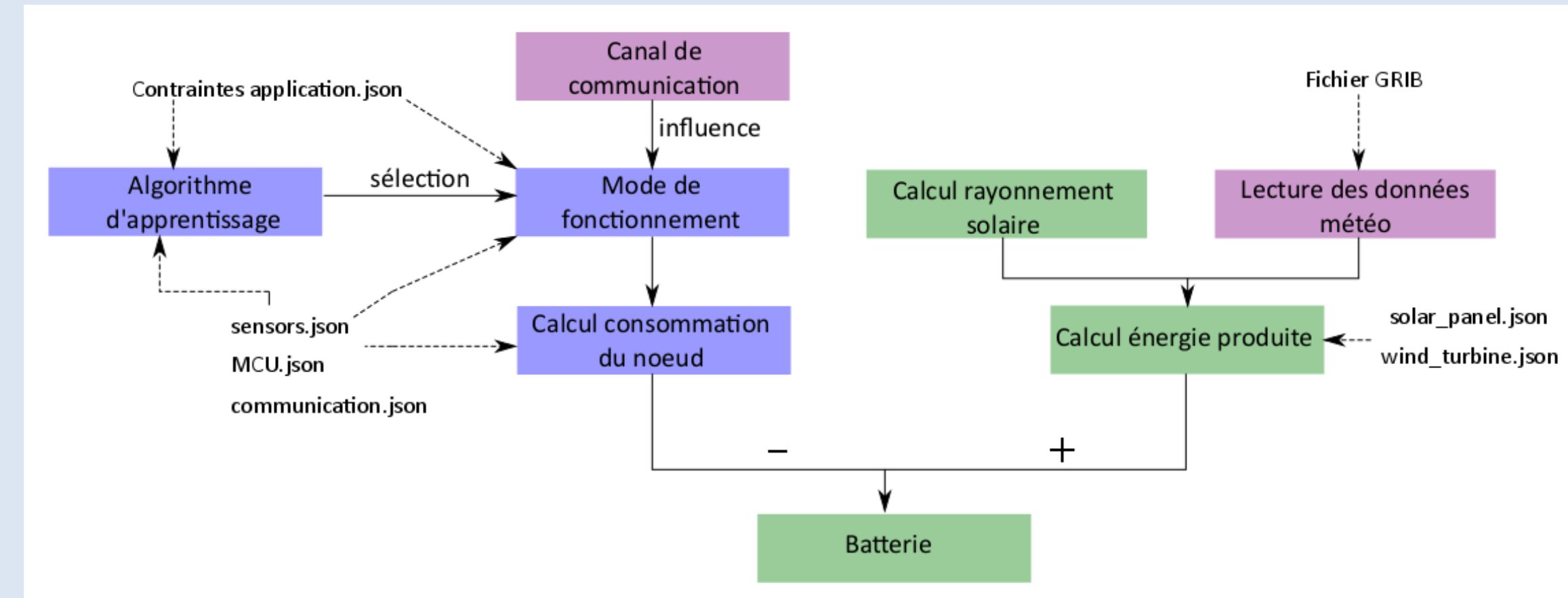


Moreover sensor nodes are deployed in stochastic environment which modifies their energy resources



**Energy consumption management**

## Simulator architecture



### Simulator parameters

Sensor node level simulator :

- Microprocessor
- Communication
- Sensors

Data sources :

- Manufacturers datasheet
- Grib meteo
  - Ambient temperature
  - Wind speed
- Solar radiation generation

Harvester & Energy storage models

- Wind turbine
- Solar panels
- Battery

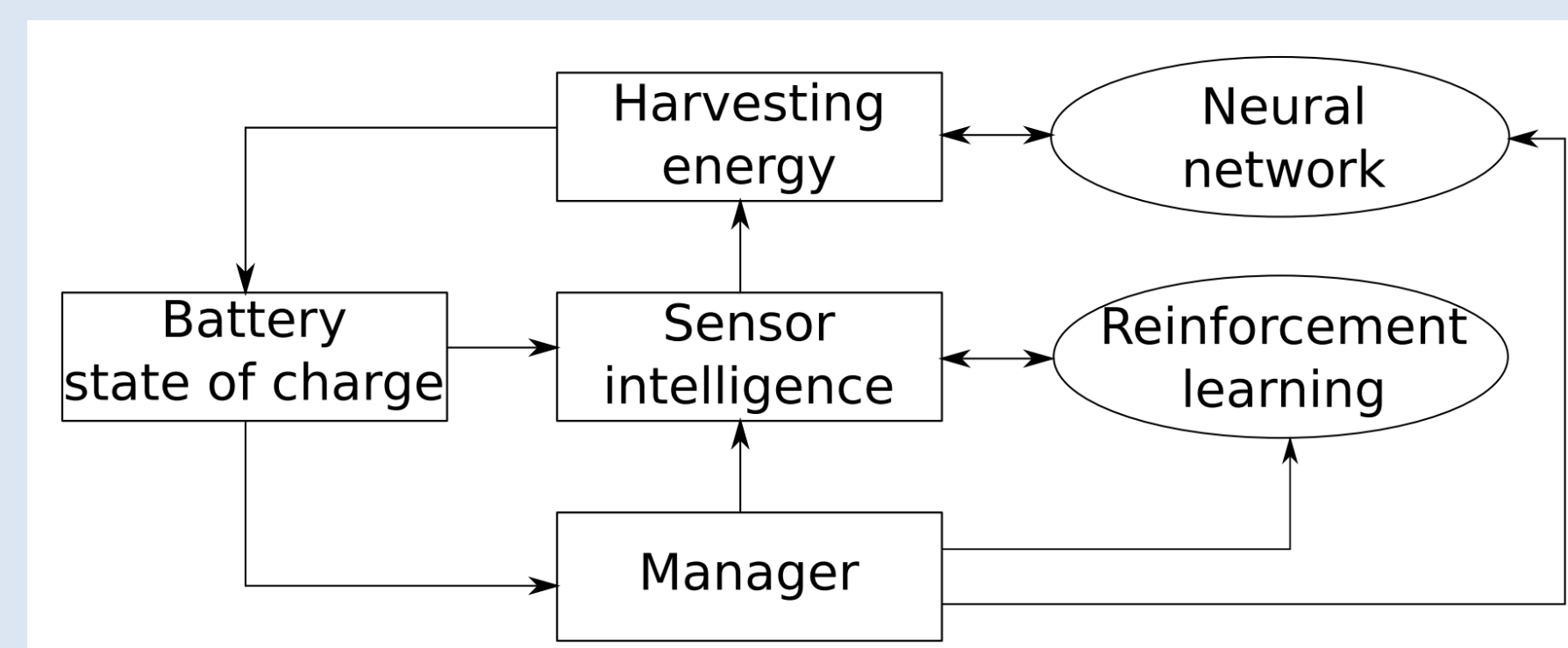
Others :

- Application constraints
- Energy management algorithm
- Geographical position of the node
- Deployment date & duration

## Objectifs

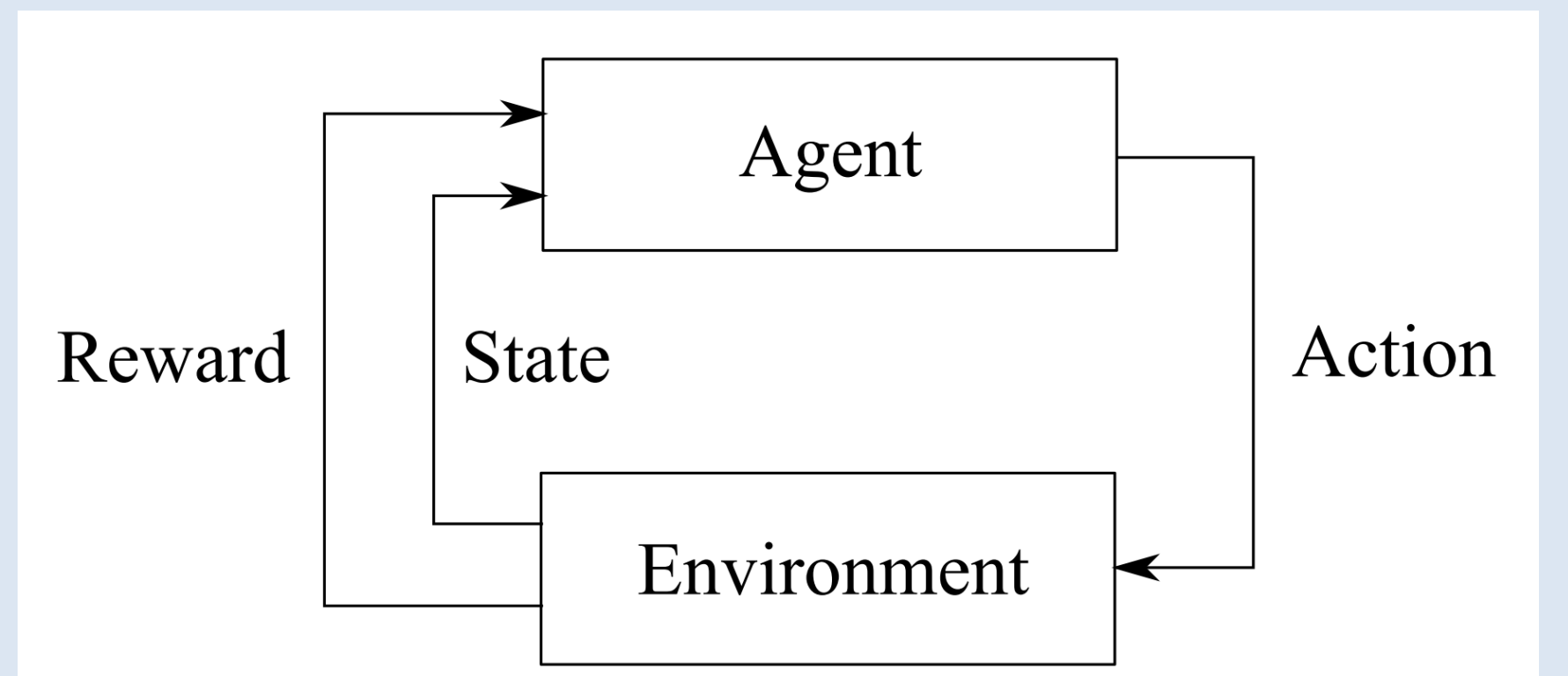
We want a self-management of energy by the sensor node. To make it work, we propose a hybrid solution based on two different approaches.

### An hybrid approach



- ➔ use neural networks to determine harvester model parameters
- ➔ use reinforcement learning to teach the node to manage itself its energy

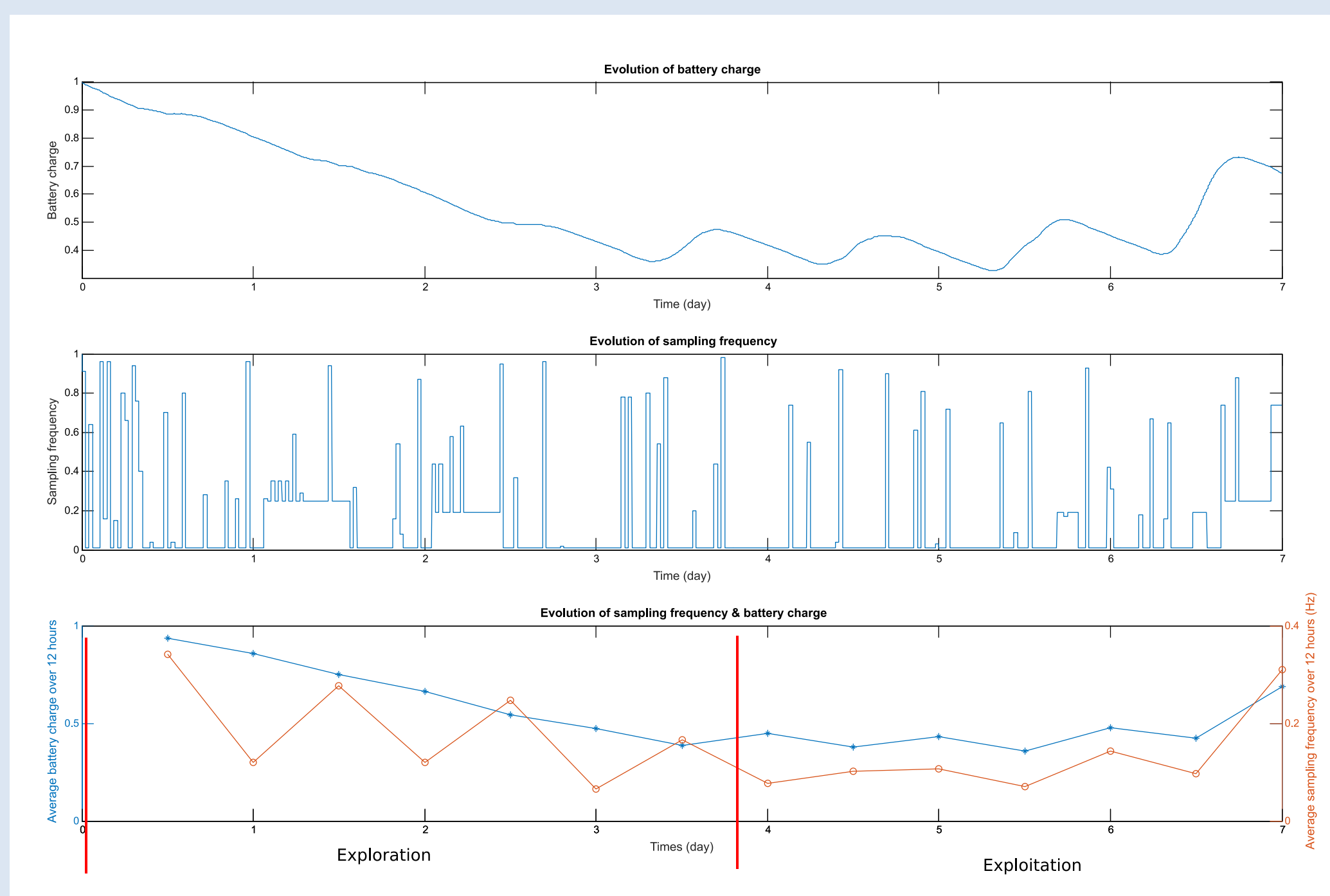
## Reinforcement learning



### Q-Learning algorithm

Initialize  $Q(s, a)$  arbitrarily  
 The agent observe the initial state  $s_0$   
 Initialize  $s$   
**for** each decision epochs **do**  
   Choose  $a$  from  $s$  using policy derived from  $Q$   
   Take action  $a$ , observe the new state  $s'$  and the associated reward  $r$   
    $Q(s, a) \leftarrow Q(s, a) + \alpha(r + \gamma \max_{a'} Q(s', a') - Q(s, a))$   
    $s \leftarrow s'$   
**end for**

## Results



### Q-Learning parameters

Parameter	Value
$\alpha$	0.1
$\gamma$	0.8
Time slot duration	30 minutes

### Sensor node's components

Components	Characteristic
Anemometers	WindMaster HS
Atmospheric sensor	YOUNG61302L
Processor unit	Cortex-M4 MCU
Communication unit	CC1000
Solar panel	$2 \times 10W$
Battery capacity	5200mA

## Conclusion

We presented a simulator used to test energy management algorithm and a approach to teach the node to manage itself its energy.

Some early results show that the node is able to self-manage its energy by adapting its sampling frequency.

### Future works

- ➔ Explore the control of other operating modes
- ➔ Teach the node to choose the computationq it perform (data analysis, data compression, ...)