



HAL
open science

Working fluid selection general method and sensitivity analysis of an Organic Rankine Cycle (ORC): application to Ocean Thermal Energy Conversion (OTEC)

Alexandre Dijoux, Frantz Sinama, Olivier Marc Marc, Bertrand Clauzade,
Jean Castaing-Lasvignottes

► To cite this version:

Alexandre Dijoux, Frantz Sinama, Olivier Marc Marc, Bertrand Clauzade, Jean Castaing-Lasvignottes. Working fluid selection general method and sensitivity analysis of an Organic Rankine Cycle (ORC): application to Ocean Thermal Energy Conversion (OTEC). 2017. hal-01653074

HAL Id: hal-01653074

<https://hal.science/hal-01653074>

Preprint submitted on 1 Dec 2017

HAL is a multi-disciplinary open access archive for the deposit and dissemination of scientific research documents, whether they are published or not. The documents may come from teaching and research institutions in France or abroad, or from public or private research centers.

L'archive ouverte pluridisciplinaire **HAL**, est destinée au dépôt et à la diffusion de documents scientifiques de niveau recherche, publiés ou non, émanant des établissements d'enseignement et de recherche français ou étrangers, des laboratoires publics ou privés.



Distributed under a Creative Commons Attribution - NonCommercial - NoDerivatives 4.0 International License

Working fluid selection general method and sensitivity analysis of an Organic Rankine Cycle (ORC): application to Ocean Thermal Energy Conversion (OTEC)

Alexandre Dijoux^{1, 2 *}, Frantz Sinama¹, Olivier Marc¹, Bertrand Clauzade², Jean-Castaing Lasvignottes¹

¹ Laboratory of Physical and Mathematical Engineering for Energy and Environment, 40 Avenue de Soweto, 97410 Saint Pierre, Reunion Island, France.

² NAVAL Energies, Centre Indret, La Montagne, France.

* Corresponding Author: Mail: alexandre.dijoux@univ-reunion.fr

Tel: +33 650 69 04 85

Highlights

- Development of a general model for the choice of the working fluid using Entropic Mean Temperature Difference.
- Comparison of 26 working fluids over 107 according to four criteria: technicity of the installation, security, environmental impacts and thermodynamic performances.
- Good candidates for an application to OTEC: NH₃, R507a and R1234yf
- Parametric sensitivity analysis of the model.

Keywords

Ocean Thermal Energy Conversion (OTEC); Entropic Mean Temperature Difference (EMTD); Organic Rankine cycle (ORC); parametric sensitivity analysis.

Abstract

A general model of an ORC (Organic Rankine Cycle) that is applicable to various technologies of heat exchangers has been carried out. It has been done considering the entropic mean temperature difference between the heat source and the working fluid as a parameter for heat exchangers. This model allows to compare pure fluids and mixtures in similar operating conditions. Simulations were conducted in the case of OTEC (Ocean Thermal Energy Conversion), for which the inputs are based on experimental measurements on an onshore prototype in Reunion Island. 26 fluids have been compared, considering thermodynamic performances (thermal efficiency and volumic work), technicity, security and environmental impacts. In the end, NH₃, R507a and R1234yf appears to be the most suitable ones. In order to have a better understanding of the model and to determine its validity in the whole domain of variation of the parameters for OTEC, a parametric sensitivity analysis has been carried out by ANOVA (ANalysis Of VAriance) associated to polynomial chaos expansion method. The most sensible parameters are heat source temperature, heat exchangers entropic mean temperature difference and turbine isentropic efficiency. The ranking given for the fluids is still valid in the whole range of the parameters for OTEC.

1. Introduction

Ocean Thermal Energy Conversion (OTEC) is a great opportunity in the tropical belt to produce non-fluctuant and environmentally friendly power [1]. The temperature difference between hot surface and cold deep seawater is exploited through a power cycle in order to produce electricity [2]. The temperature difference between hot and cold heat sources is very small compared to conventional Rankine cycles, or even compared with other applications working at low temperature, such as solar, geothermal or waste heat recovery [3].

Various approaches are used in order to increase the very low performance of an ORC (Organic Rankine Cycle):

- modifying the cycle structure,
- optimizing the working conditions of the cycle,
- choosing the most adapted working fluid for the application.

Considering the first point, Tchanche *et al.* have reviewed a lot of modified cycles (with a reheater for instance), or mixtures-adapted cycle like the Kalina cycle or Uehara cycle [4]. In parallel, Yoon *et al.* proposed an ammonia-based power cycle by using an expansion valve and a cooler [5] and Yuan *et al.* presented a water-ammonia based power absorption cycle with two ejectors [6]. They both obtained better thermal efficiency than the conventional ORC, even if the Kalina and Uehara cycles also show good performances [7]–[11]. Nonetheless, the basic ORC appears to be the simplest, and provides reliability, low investment costs, and easy maintenance [12].

Considering the choice of the working fluid, various criteria and methods have been proposed to select the most suitable fluids. The main ones for a working fluid are good thermodynamic performances, non-toxicity, small environmental impact, low cost, availability, and compatibility with pipes and components materials. Unfortunately, it is difficult to find the perfect fluid that meets all of these qualities. Lee *et al.* [13] compared the performances of more than one hundred ozone-safe working fluids for an ORC applied to waste heat recovery. They found that thermodynamic performances of the fluids are correlated with their physical properties, such as normal boiling point, critical pressure and molecular weight. Stijepovic *et al.* [14] also carried out a theoretical study to evaluate the effect of physical properties of working fluids on thermal and exergetic efficiency and the ratio of heat exchangers area and net power output. Saleh *et al.* [15] conducted simulations to compare the thermal efficiency and volume flow rates of various working fluids for different types of cycle. Wang *et al.* [16] provided a theoretical analysis of net power output and heat exchangers surface for a Waste Heat Recovery (WHR) system. They found that fluids with low Jacob number performed better. They also found in another study [17] that the choice of the working fluid for WHR has a small impact on optimal performances of the cycle, and that the evaporator is the most important component in exergy losses. However, they only consider pure fluids. The use of mixtures as working fluid has also been discussed [18], [19]. It is established that, in theory, the behavior of mixtures during phase change allows reducing the mean temperature difference between working fluid and source in heat exchangers, but the performance is not always better than pure fluids in practice. Some authors realized a complete cost study by using correlations for several

1 components [17], [20]–[22]. This means that they should choose a precise technology of heat
2 exchangers and expander. Zhang *et al.* [23] proposed a method using the Hass Diagram
3 Technique to compare working fluids with thermodynamic, security and environment
4 considerations. However, no simulation was conducted to evaluate thermodynamic behavior of
5 each fluid in a particular cycle.

6 The selection of the best fluids is also often related with the optimization of working conditions
7 parameters of the cycle, like the evaporation and condensation temperature : each fluid is thus
8 compared with his own optimized parameter [16], [24], [25]. He *et al.* [26] carried out an
9 analytical study in order to evaluate the optimized evaporation temperature with net power
10 output as the objective function and compared the optimal net power output for several fluids.
11 In that case, the objective function is decisive, as it influences the value of optimal parameters.
12 Therefore, some efforts have been made to conduct multi-objective optimization [27], [28].

13 Moreover, in the case of OTEC, which is very particular due to the weak temperature difference
14 between heat sources, the literature about the choice of the working fluid is relatively poor. Sun
15 *et al.* [29] provided an analytical method to optimize the performance of an OTEC power plant
16 considering two working fluids, R134a and ammonia. Yang *et al.* [30] conducted an
17 optimization of evaporation and condensation temperature and a comparison of five pure
18 working fluids considering an OTEC power plant with shell-and-tube heat exchangers. Yoon
19 *et al.* [31] compared the influence of various working fluids on the thermal efficiency of an
20 OTEC power plant, but they didn't take into account net power output or volume flow rates.
21 Iqbal *et al.* [32] analyzed the influence of mixtures on the performances of an OTEC system,
22 but they compared only one of them with one pure fluid (propane). Hung *et al.* [33] carried out
23 a comparison of eleven working fluids for solar and OTEC heat sources based on a study of
24 physical properties of the fluids. They found that isentropic fluids performed generally better.
25 Furthermore, some attention has been paid on increasing the temperature difference between
26 the cold and the hot sources of an OTEC system by coupling it with solar energy [34], [35] or
27 with the effluent of a nuclear power plant [36]. The problem is that the power produced is no
28 longer steady during all day and night, and nuclear power plant are often not available in tropical
29 islands, where OTEC seems undoubtedly to be a good opportunity. In fact, little attention has
30 been paid on comparing both pure and mixed working fluids for OTEC.

31 The previous short review shows that a lot of studies have been carried out for optimizing the
32 performances of an ORC, from simple approaches using ideal cycles (preselecting the fluid
33 before designing and sizing the components), to detailed energetic and economic studies and
34 simulations (where design and size of the components are fixed). These last methods require a
35 good knowledge about the technology of the system and its components, and are therefore not
36 applicable in a preliminary design phase of the system. As the choice of the working fluid occurs
37 early in the conception of an ORC, simple approaches are generally preferred. In this case, the
38 comparison of very different fluids (in particular when comparing pure fluids and mixtures)
39 remains tricky, especially when heat exchangers are not particularly described. To do so, some
40 authors introduce the pinch point [17], [25], defined by the minimal temperature difference
41 between the working fluid and the heat transfer fluid in the HEX (Heat Exchanger). However,

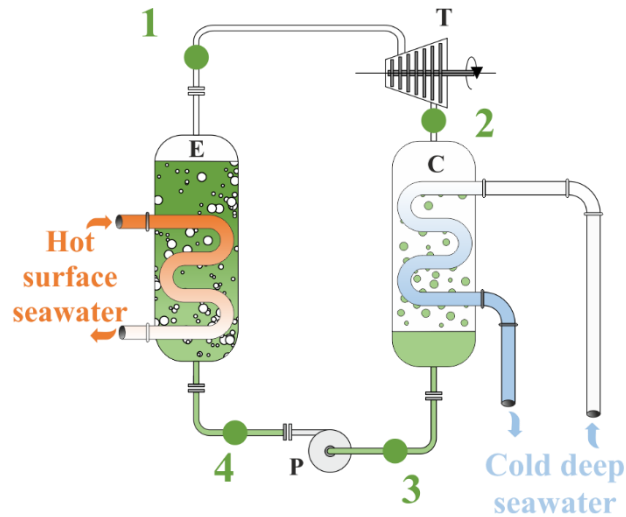
1 the location and the value of the pinch point depend on the fluid, the flow rates and the amount
2 of heat exchanged and are sometimes difficult to determine and require a deep knowledge of
3 the HEX structure and applied conditions. Other authors consider the temperature difference
4 between the outlet of the working fluid and the inlet of the heat source [5], [6], [37]. This method
5 is interesting when comparing pure fluids, because the phase change temperature is constant.
6 In the case of zeotropic mixtures, temperature is no longer constant during evaporation and
7 condensation and this behavior allows to reduce the mean temperature difference between the
8 working fluid and the heat source [18]. However, the temperature variation of the mixture does
9 not necessarily have the same profile as the heat source. Hence, one or more pinch points can
10 be observed [38]. So, when comparing zeotropic mixtures with pure fluids, this method
11 becomes disadvantageous.

12 To overcome these drawbacks and provide a general method to compare working fluids in
13 similar conditions with a reduce number of hypothesis, the entropic mean temperature
14 difference is introduced in this study as a parameter for heat exchangers description. In the end,
15 a general method for working fluid comparison is given, considering four criteria: technicity,
16 thermodynamic performances, security and environment. This method is implemented for an
17 OTEC application, for which input parameters are issued from an experimental land-based
18 prototype in Reunion Island [39]. A parametric sensitivity analysis of the model is then carried
19 out in order to explain the model operation, and to give the validity domain of previous results.

20 **2. Cycle description**

21 **2.1. From the ideal Carnot cycle to the real ORC**

22 The most efficient cycle for converting heat into work is the Carnot cycle (Figure 2.a).
23 However, this ideal cycle is not found in practice and is replaced by the Rankine cycle (Figure
24 2.b). The latter is composed of four components: a pump (P), an evaporator (E), a turbine (T)
25 and a condenser (C), as shown in Figure 1. A working fluid in the liquid state (point 1) is
26 evaporated by using the heat from the hot source. The obtained vapour at high pressure (point
27 2) is expanded in the turbine producing mechanical work convertible in electricity. The vapour
28 at low pressure (point 3) is then cooled and condensed by using the cold source (point 4). A
29 pump brings back this liquid to the inlet of the evaporator (point 1). In the case of so called
30 “wet fluids” (i.e. fluids with a negative slope of their vapour saturation curve $(\partial T/\partial s)_{x=1} < 0$),
31 the fluid leaves the turbine in a two-phase flow, leading to droplets (Figure 2.c), whereas in the
32 case of so called “dry” or “isentropic” fluids (i.e. fluids with a positive slope or with a vertical
33 vapour saturation curve, respectively), the fluid at the output of the turbine is overheated (Figure
34 2.d and 2.e).



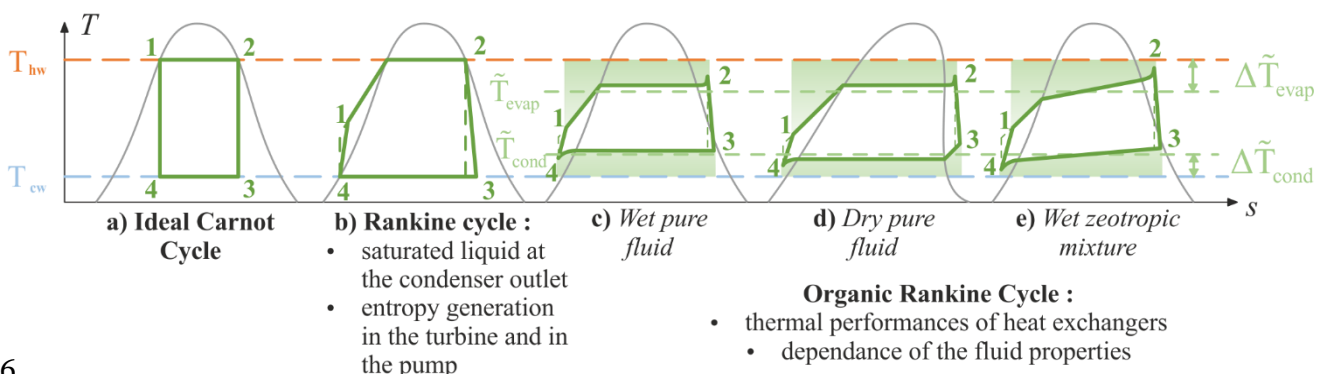
1

2 *Figure 1. Schematic of a basic ORC applied to OTEC (E: Evaporator, T: Turbine, C:*
 3 *Condenser, P: Pump)*

4 Furthermore, an ORC undergoes various unideal behaviors:

- 5
- 6 • Due to heat exchangers, a temperature difference appears in the cycle between the
 - 7 working fluid and heat sources. Moreover, a little overheat or subcooling is often
 - 8 observed at the outlet (Figure 2.c, 2.d and 2.e).
 - 9 • The pump and the turbine are not perfect: the transformations occurring are in reality
 - 10 producing entropy, so the isentropic efficiency of these components has been
 - 11 considered.
 - 12 • In the particular case of low grade heat ORC, heat exchangers areas are very important,
 - 13 so as the pressure losses can be important, particularly for plate heat exchangers.

13 For an ORC applied to OTEC, the temperature difference between hot surface seawater ($T_{hw} =$
 14 $25.5\text{ }^{\circ}\text{C}$) and cold deep seawater ($T_{cw} = 5\text{ }^{\circ}\text{C}$) is very small, and the corresponding ideal thermal
 15 efficiency of the Carnot cycle (given by: $h_{th} = 1 - T_{cw} / T_{hw}$) is only 6.9 %.



16

17 *Figure 2. T-s diagram of thermodynamic cycles progressing from ideal to real*

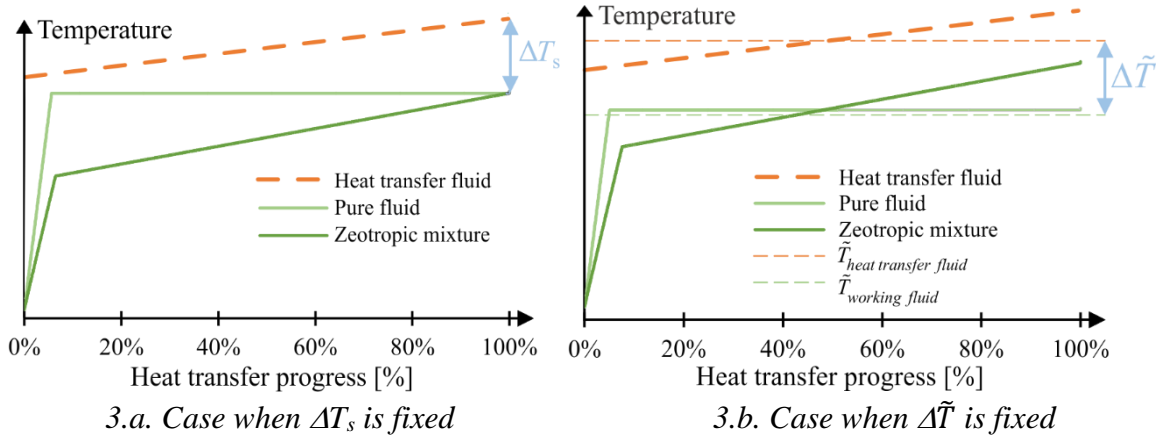
18 2.2. Cycle modeling

19 To avoid the drawbacks of the Pinch Point approach, it has been decided to introduce the
 20 Entropic Mean Temperature Difference (EMTD) concept. The latter is, by definition, the ratio

1 of the enthalpy change to the entropy change, that is to say, the harmonic mean of temperature
 2 weighted by heat transfer, and is given by:

$$3 \quad \tilde{T} = \frac{\int \delta q}{\int \delta q / T} = \frac{q}{\Delta s} = \frac{\Delta h}{\Delta s} \quad (1)$$

4 This notion was used by Meunier *et al.* [40] for thermodynamic cycle analysis and by other
 5 authors [41]–[43]. The EMTD is then defined by the difference between entropic mean
 6 temperatures of both working and heat transfer fluids. This parameter is advantageous
 7 comparing to the most used temperature difference at the output ΔT_s since it allows the
 8 comparison between pure fluids and mixtures. For the mixture, the mean temperature difference
 9 is greater than that of the pure fluid due to the temperature glide. When using EMTD, fluids
 10 can be compared in more similar operating conditions in terms of heat transfer, as shown in
 11 Figure 3.



12 3.a. Case when ΔT_s is fixed
 13 3.b. Case when $\Delta \tilde{T}$ is fixed
 14 Figure 3. Typical temperature evolution profile in an evaporator throughout the heat transfer
 15 progress for a pure fluid and a mixture.

16 So as to compare different kind of working fluids, it can be supposed that the entropic mean
 17 temperature of the heat transfer fluid is the same for all the working fluids, taken equal to the
 18 input source temperature. EMTD in the evaporator and in the condenser are then given by:

$$18 \quad \Delta \tilde{T}_{\text{evap}} = T_{\text{hw}} - \tilde{T}_{\text{evap}} \quad (2)$$

$$19 \quad \Delta \tilde{T}_{\text{cond}} = \tilde{T}_{\text{cond}} - T_{\text{cw}} \quad (3)$$

20 Furthermore, considering the pump and the turbine, they are described by their respective
 21 isentropic efficiency:

$$22 \quad \eta_{\text{pump}} = (h_1^{\text{is}} - h_4) / (h_1 - h_4) \quad (4)$$

$$23 \quad \eta_{\text{turb}} = (h_3 - h_2) / (h_3^{\text{is}} - h_2) \quad (5)$$

24 Energy balances for each component are given by:

$$25 \quad \text{Evaporator:} \quad q_{\text{evap}} = h_2 - h_1 \quad (6)$$

$$26 \quad \text{Turbine:} \quad w_{\text{turb}} = h_2 - h_1 \quad (7)$$

$$27 \quad \text{Condenser:} \quad q_{\text{cond}} = h_4 - h_3 \quad (8)$$

$$28 \quad \text{Pump:} \quad w_{\text{pump}} = h_1 - h_4 \quad (9)$$

1 The performance of the cycle is then determined by two parameters: the widely used thermal
 2 efficiency and the net volumic work respectively determined by:

$$3 \quad \eta_{th} = w_{net} / q_{evap} = (w_{turb} + w_{pump}) / q_{evap} \quad (10)$$

$$4 \quad w_{net, vol} = w_{net} / v_3 = (w_{turb} + w_{pump}) / v_3 \quad (11)$$

5 Where v_3 is the maximum value of the specific volume of the working fluid at the turbine output.
 6 In fact, as the work consumed by the pump is small compared to the work produced by the
 7 turbine, this parameter is approximately the inverse of the Size Parameter (SP) used by He *et*
 8 *al.* [26], Macchi *et al.* [44], Lakew *et al.* [45] and Baik *et al.* [46] and allows having an idea of
 9 the turbine size.

10 **3. Working fluid selection**

11 A method for the comparison of working fluids based on the use of the precedent model has
 12 been developed and applied to OTEC. Fluids are compared according to 4 criteria: technicity,
 13 security, environmental impacts and thermodynamic performances. Methods and results are
 14 shown in this section.

15 **3.1. Simulation hypothesis**

16 The system is considered to be working under steady state conditions and heat losses are
 17 neglected. The properties of both pure working fluids and mixtures have been determined using
 18 the software Engineering Equation Solver (EES) [47]. Input parameters have been obtained
 19 from an OTEC onshore prototype situated in Reunion Island [48], [39] (an overseas French
 20 department located in Indian Ocean, close to Mauritius). Corresponding values are listed in
 21 Table 1.

22 *Table 1 : Input parameters used for simulations*

External conditions	
Hot seawater temperature (T_{hw})	25.5°C
Cold seawater temperature (T_{cw})	5°C
Evaporator	
Overheating (ΔT_{over})	0.1°C
Pressure losses (ΔP_{evap})	0.15 bar
EMTD ($\Delta \tilde{T}_{evap}$)	4°C
Condenser	
Subcooling (ΔT_{sub})	0.1°C
Pressure losses (ΔP_{cond})	0.15 bar
EMTD ($\Delta \tilde{T}_{cond}$)	4°C
Pump and turbine characteristics	
Pump isentropic efficiency (η_{pump})	0.8
Turbine isentropic efficiency (η_{turb})	0.8

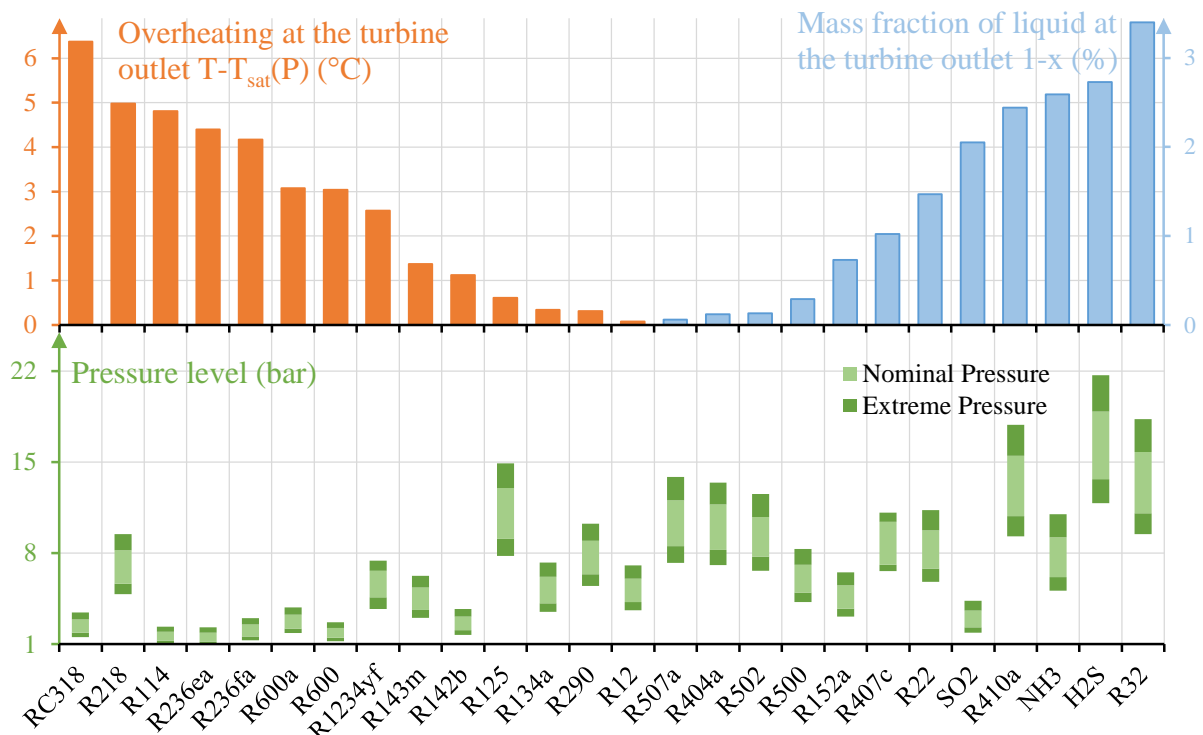
23 Otherwise, for an OTEC application, the low temperature difference between hot and cold heat
 24 sources involves very important heat exchange areas and volumes. So, pressure drop can be

1 observed in the working fluid side, particularly for plate HEX and have been assumed to occur
 2 during the phase change of the fluid.

3 The results obtained for a list of selected working fluids is shown in Table 3.

4 3.2. Technicity

5 The first criterion used to compare working fluids in this study is the technicity represented by
 6 the working pressure range and the vapour quality at the turbine outlet. Extreme pressures of
 7 the cycle are calculated considering sources temperatures, while nominal pressures are
 8 determined by simulated working fluid temperatures. A pressure that ranges between 1 and 24
 9 bar has been considered here and provides generally easier implementation and lower cost.
 10 Furthermore, the vapour quality is chosen greater than 97 % to reduce the risk of alteration of
 11 the turbine by any droplets. After a first selection between a list of 107 fluids according to these
 12 criteria, 26 fluids appears to be good candidates for an OTEC application. The list of selected
 13 working fluids is shown in Table 3, and their technicity indicators are illustrated in Figure 4.



14
 15 *Figure 4 : State of the fluid at the turbine outlet and working pressure range for the 26 fluids*
 16 *of the panel*

17 It is interesting to notice that the two criteria above are correlated. Fluids with the highest
 18 operating pressures are also those with the highest liquid quality at the turbine outlet. These
 19 fluids are the wet fluids. Most of dry fluids have low operating pressures, but they have a high
 20 overheating at the condenser inlet, which will affect cycle performances.

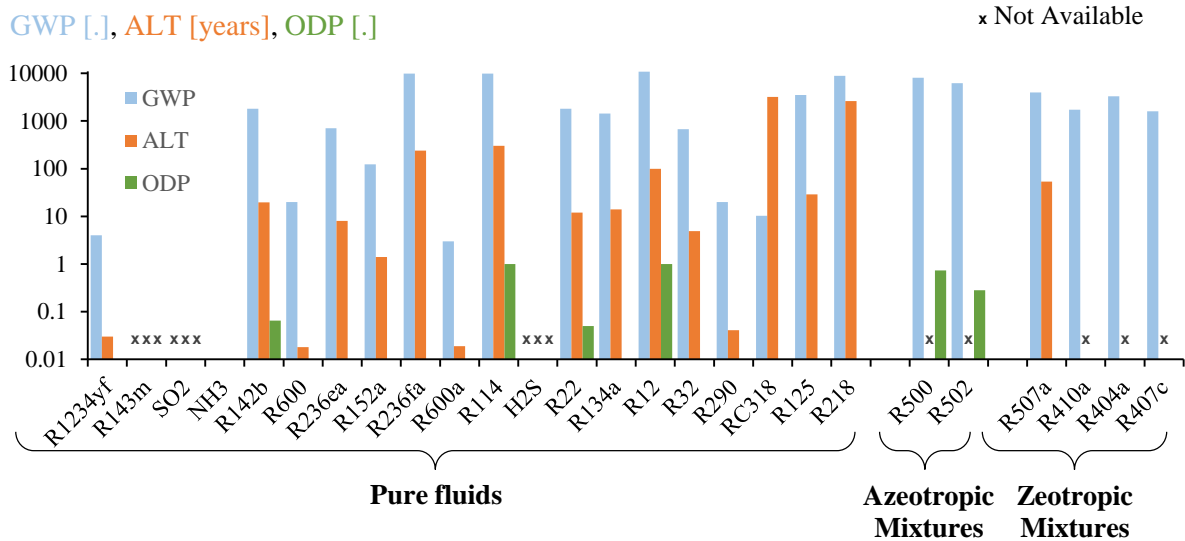
21 3.3. Security

22 The ASHRAE standard 34 reference [49] has been chosen as the security indicator. This latter
 23 is composed of a letter that indicates the toxicity (from A for non-toxic to C for highly toxic)

1 and a number that indicates flammability (from 1 for non-flammable to 3 for highly flammable).
 2 Among the candidates, 14 fluids have the best indicator A1, as shown in Table 3. NH₃ is B2L,
 3 that is to say that it is toxic and slightly flammable, and R1234yf is A2L, so it is non-toxic and
 4 slightly flammable. Accordingly, R1234yf shows quite good properties for safety
 5 considerations, even if it isn't A1. The indicator was not given for H₂S, but it is a toxic and
 6 flammable fluid.

7 3.4 Environmental considerations

8 A lot of working fluids have been forbidden in order to protect the ozone layer since the
 9 Montreal protocol in 1998. Furthermore, as OTEC claim to be an environment-friendly source
 10 of energy, it is important to consider the environmental impact of the working fluid. Three
 11 indicators have been chosen: the global warming potential (GWP), the ozone depletion potential
 12 (ODP), and the atmospheric lifetime (ALT). The GWP represents the impact on the global
 13 warming in terms of temperature variation, related to that of a similar mass of CO₂. The ODP
 14 is the amount of destruction of the ozone layer, related to that of a similar mass of R11. The
 15 ALT is the time in years necessary for a substance to turn over the global atmospheric burden.
 16 Values of these three indicators are given in Figure 5. It appears that R1234yf, NH₃, R600a,
 17 R600 and R290 have the lowest environmental impact.



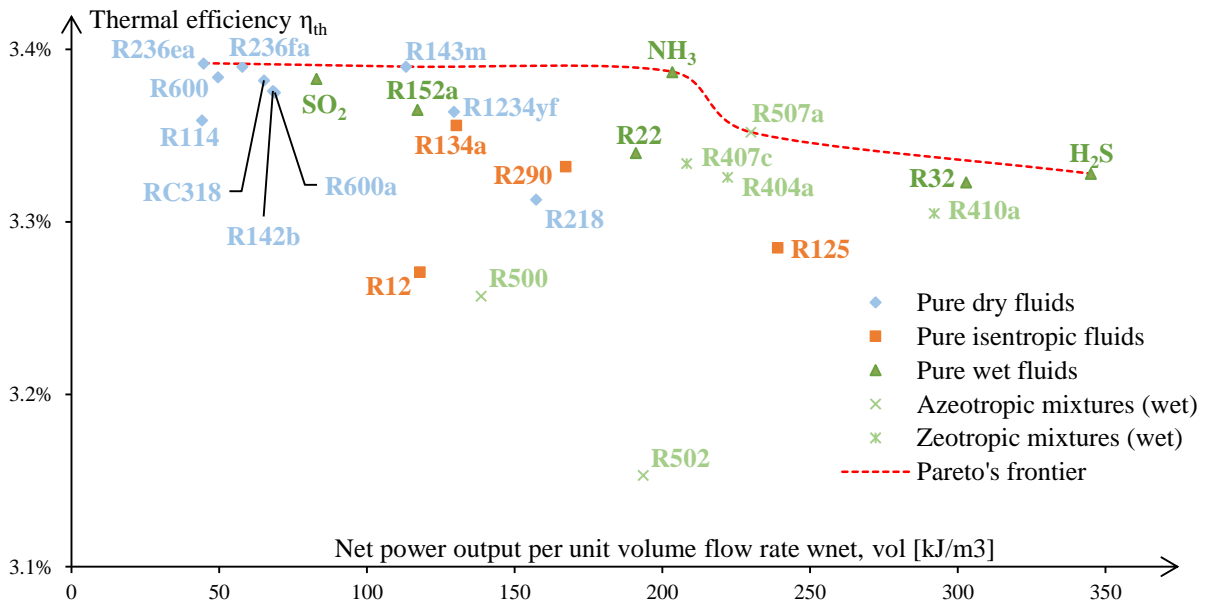
18 *Figure 5. Value of GWP, ALT and ODP for the fluids of the panel*

20 3.5. Thermodynamic performances

21 According to results given in Table 3, the ranking of the different working fluids depends
 22 strongly on the selected criteria. Indeed, considering the specific work w_{net} , NH₃ perform widely
 23 better than other fluids (41.98 kJ/kg for NH₃ compared to 14.98 kJ/kg for H₂S in second
 24 position). However, considering the thermal efficiency, the gap between different fluids is less
 25 important. R143m performs better, but NH₃, R236ea and SO₂ give very close values of thermal
 26 efficiency. Considering the net volumic work $w_{net, vol}$, H₂S and R32 perform better.

1 To compare the results, thermal efficiency has been plotted versus volumic net work, as in
 2 Figure 6. A Pareto's frontier giving the best fluids is also represented in this figure. Working
 3 fluids on this curve are R143m, NH₃, R507a and H₂S. R143m is on the frontier because it has
 4 a better η_{th} than NH₃. However, the difference in thermal efficiency between NH₃ and R143m
 5 is very small (3.447 % for NH₃ against 3.450 % for R143m), when the volumic work of NH₃ is
 6 near twice than R143m. So, R143m do not provide great advantage over NH₃. So, we will not
 7 consider R143m in the following of this study.

8 In conclusion, the best fluids according to the two selected thermodynamic criteria (η_{th} and
 9 $w_{net,vol}$) are in first position NH₃, R507a and H₂S. In second position, R134a, R1234yf, R22,
 10 R407c, R404a and R32 also show good performances.



11
 12 *Figure 6. Thermal efficiency versus net volumic work for the selected fluids, and representation*
 13 *of the Pareto's frontier.*

14 3.6. Comparison Synthesis

15 All fluids in the panel presented were suitable according to the technical criteria. Three working
 16 fluids have been chosen by the thermodynamic study, fourteen by the security study, and five
 17 by the environmental impact study, as shown in Table 2.

1 *Table 2: Best fluids from thermodynamic, security and environment point of view*

Fluids with better thermodynamic performances	Fluids with better safety indicator	Fluids with low ALT, GWP and ODP
NH ₃	R507a	R134a
R507a	R236fa	R404a
SO ₂	R218	R12
	R114	R410a
	R500	RC318
	R22	R125
	R502	R407c

2 *Table 3: Properties of selected working fluids and simulation results. The inputs for this*
 3 *simulation are given in Table 1.*

	Type of fluid	State at the turbine outlet [%]	ASHRAE	W _{net} [kJ/kg]	W _{net, vol} [kJ/m ³]	η _{th}
PURE FLUIDS						
R1234yf	isen ¹	Overheated: 2.57°C	A2L	5.57	129.4	3.364%
R143m	isen ¹	Overheated: 1.37°C	n.a. ²	6.76	113.2	3.390%
SO ₂	wet ¹	Diphasic: x=98.0%	B1	12.74	82.9	3.383%
NH ₃	wet ¹	Diphasic: x=97.4%	B2L	41.98	203.4	3.387%
R142b	isen ¹	Overheated: 1.12°C	A2	7.46	68.1	3.376%
R600	dry ¹	Overheated: 3.04°C	A3	13.37	49.6	3.384%
R236ea	dry ¹	Overheated: 4.40°C	n.a. ²	5.89	44.7	3.392%
R152a	wet ¹	Diphasic: x=99.3%	A2	10.27	117.1	3.365%
R236fa	dry ¹	Overheated: 4.17°C	A1	5.53	57.7	3.390%
R600a	dry ¹	Overheated: 3.07°C	A3	12.28	68.8	3.375%
R114	dry ¹	Overheated: 4.81°C	A1	4.79	44.1	3.359%
H ₂ S	wet ¹	Diphasic: x=97.3%	n.a. ²	14.98	345.0	3.328%
R22	wet ¹	Diphasic: x=98.5%	A1	6.73	191.0	3.340%
R134a	isen ¹	Overheated: 0.34°C	A1	6.67	130.3	3.356%
R12	wet ¹	Overheated: 0.08°C	A1	4.97	117.9	3.271%
R32	wet ¹	Diphasic: x=96.6%	A2	9.99	302.8	3.323%
R290	isen ¹	Overheated: 0.31°C	A3	12.49	167.3	3.332%
RC318	dry ¹	Overheated: 6.38°C	A1	4.07	65.2	3.382%
R125	isen ¹	Overheated: 0.61°C	A1	4.29	239.1	3.285%
R218	dry ¹	Overheated: 4.98°C	A1	3.08	157.2	3.313%
AZEOTROPIC MIXTURES						
R500	wet ¹	Diphasic: x=99.7%	A1	5.95	138.6	3.257%
R502	wet ¹	Diphasic: x=99.9%	A1	4.55	193.5	3.153%
R507a	wet ¹	Diphasic: x=99.9%	A1	5.32	230.0	3.352%
ZEOTROPIC MIXTURES						
R410a	wet ¹	Diphasic: x=97.6%	A1	7.01	292.0	3.305%
R404a	wet ¹	Diphasic: x=99.9%	A1	5.42	222.1	3.326%
R407c	wet ¹	Diphasic: x=99.0%	A1	7.05	208.2	3.334%

4 ¹ isentropic, wet or dry: type of the fluid depending on the slope of the saturated vapor curve

5 ² n.a.: not available

1 As a result, no fluid meets the three criteria at the same time. However, NH₃ is a very good
 2 candidate because it meets good thermodynamic performances and low environmental impact,
 3 even if it is toxic. R507a is also a good candidate because it presents good thermodynamic
 4 performances, non-toxicity and non-flammability, but its GWP and ALT are high. It is also
 5 interesting to notice that R1234yf seems also to be a good compromise because it is in second
 6 position for thermodynamic performances, it has very few environmental impacts and isn't
 7 toxic and just slightly flammable (A2L). So, in the end, three fluids appear to be the best
 8 candidates for OTEC: NH₃, R507a and R1234yf. This selection was made assuming operating
 9 conditions and component properties to be constant. A parametric sensitivity analysis will be
 10 held in the next part to study the effect of their variations.

11 **4. Parametric sensitivity analysis of the thermodynamic model**

12 **4.1 Method**

13 The parametric sensitivity analysis sets out to determine the influence of the variance of each
 14 parameter of the model on the results. The most used method found in the literature is the “One
 15 Factor At Time” method. This later consists in varying one parameter and keeping the others
 16 constant to point out the local sensitivity of the model to this parameter. However, many
 17 authors, like Saltelli and Anonni [50] or Campolongo *et al.* [51], consider that this method does
 18 not allow a complete comprehension of the model, because it uses many shortcomings and does
 19 not take into account the influence of combined effects. Thus, a global sensitivity analysis with
 20 the method named ANOVA (ANalysis Of VAriance), by using the Sobol sensitivity indices
 21 [52] has been chosen. We consider that every input parameter X_i is a random variable, and the
 22 vector of all input parameters (X_1, \dots, X_p) is described by its multidimensional probability
 23 distribution. The model then works out the output result $Y=f(X_1, \dots, X_p)$, also considered as a
 24 random variable whose distribution depends on that of the parameters X_i . The Sobol sensitivity
 25 indices are defined by:

$$26 \quad S_i = \frac{\text{Var}_{X_i} \left(E_{X_{\sim i}} (Y | X_i) \right)}{\text{Var}(Y)} \quad (12)$$

27 Where X_i is the i -th input parameter and $X_{\sim i}$ represents all parameters excepted X_i . This
 28 sensitivity index represents the reduction of the variance of the output Y if the parameter X_i is
 29 fixed, that is to say the percentage of the variance of Y due only to the parameter X_i . We can
 30 also define the total sensitivity index ST_i as the value of the remaining variance of Y if all
 31 parameters but X_i are fixed:

$$32 \quad ST_i = \frac{E_{X_{\sim i}} \left(\text{Var}_{X_i} (Y | X_{\sim i}) \right)}{\text{Var}(Y)} \quad (13)$$

33 Thus, ST_i represents the percentage of the variance of Y due to the parameter X_i including its
 34 interactions with other parameters. In the case of an additive model, $S_i = ST_i$.

1 In this study, all input parameters are processed to match independent random variables
 2 uniformly distributed on the interval $[-1,1]$. Then, Polynomial Chaos Expansion, as described
 3 in the work of Sudret or Crestaux *et al.* [53], [54] is conducted. This method is efficient when
 4 the number of input parameters is lower than 20 and the function is relatively smooth. This
 5 conditions are verified for this study because only 10 parameters are used and the variation of
 6 outputs is continuous and regular with the variation of each parameter.

7 The model is approached by its decomposition in multidimensional polynomial series. To
 8 respect the conditions of ANOVA, an orthogonal basis of Legendre polynomials is used, under
 9 uniformly distributed variables in $[-1,1]$. The process followed is then:

- 10 • Generation of random sets of parameters with respect to the given distribution
- 11 • Computation of the model results for each set of parameter
- 12 • Determination of the coefficients a_{i_1, \dots, i_s} of the multidimensional Legendre polynomial
 13 (P_{ij}) series that best fit the results (least square method) :

$$14 \quad f(X_1, \dots, X_p) = \sum_{\alpha_{i_1, \dots, i_s} \in \mathbb{N}^s}^n a_{\alpha_{i_1, \dots, i_s}} P_{\alpha_{i_1, \dots, i_s}}(X_{i_1}, \dots, X_{i_s}) = a_1 P_1(X_1) + a_2 P_2(X_2) + a_{12} P_{12}(X_1, X_2) + \dots \quad (14)$$

- 15 • Calculation of Sobol sensitivity indices: equations 12 and 13 are applied for the result
 16 given in equation 14 (for further details, see the work of Crestaux *et al.* [54]).

17 4.2 Hypothesis

18 Input parameters of the ORC model are given in Table 4. They are processed with an affine
 19 transformation to become variables distributed in $[-1,1]$. Hot seawater temperatures in
 20 Reunion Island have been monitored during a ten year period by the ECOMAR Laboratory
 21 [55]. This temperature only presents a seasonal fluctuation between 23 °C in winter and 28 °C
 22 in summer. In regards to the cold deep seawater temperature, a local study realized by the ARER
 23 [56] shows that very weak fluctuations are observed around 5 ° C to 1000 m depth. Other
 24 parameters are derived from the OTEC onshore prototype data.

25 *Table 4. Hypothesis of the parametric sensitivity analysis, each variable X_i is uniformly*
 26 *distributed in $[-1,1]$.*

Variables	Unit	Mean Value	Variation interval	Transformation
T_{hw}	°C	25.5	[23 ; 28]	$T_{hw} = 25.5 + 2.5X_1$
T_{cw}	°C	5	[4.8 ; 5.2]	$T_{cw} = 5 + 0.2X_2$
ΔT_{over}	°C	1	[0.5 ; 1.5]	$\Delta T_{over} = 1 + 0.5X_3$
ΔT_{sub}	°C	1	[0.5 ; 1.5]	$\Delta T_{sub} = 1 + 0.5X_4$
$\Delta \tilde{T}_{evap}$	°C	4	[2 ; 6]	$\Delta \tilde{T}_{evap} = 4 + 2X_5$
$\Delta \tilde{T}_{cond}$	°C	4	[2 ; 6]	$\Delta \tilde{T}_{cond} = 4 + 2X_6$
η_{turb}	%	0.8	[0.7 ; 0.9]	$\eta_{turb} = 0.8 + 0.1X_7$
η_{pump}	%	0.8	[0.7 ; 0.9]	$\eta_{pump} = 0.8 + 0.1X_8$
ΔP_{cond}	bar	0.15	[0 ; 0.3]	$\Delta P_{cond} = 0.15 + 0.15X_9$
ΔP_{evap}	bar	0.15	[0 ; 0.3]	$\Delta P_{evap} = 0.15 + 0.15X_{10}$

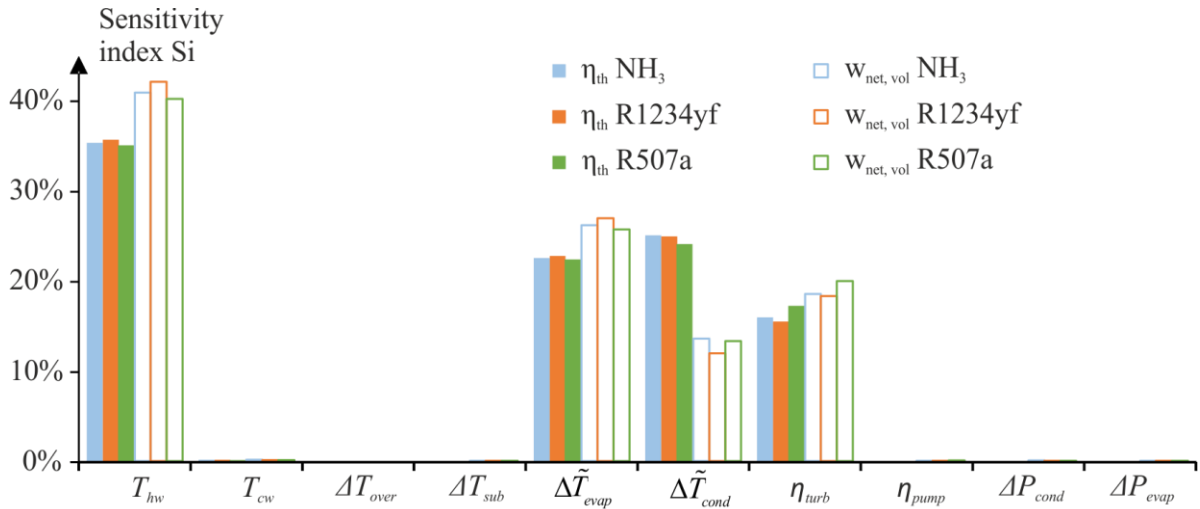
1 Two output variables are considered:

- 2 - thermal efficiency $\eta_{th} = f(X_1, \dots, X_{10})$ and
 3 - net volumic work $w_{net,vol} = g(X_1, \dots, X_{10})$.

4 A maximal polynomial degree of $n = 6$ and a size of the random sample of $N = 1000$ were
 5 found to be sufficient to achieve the convergence of the calculation.

6 4.3 Results

7 The parametric sensitivity analysis has been conducted for NH₃, R507a and R1234yf. Results
 8 are presented in Table 5 and Figure 7.



9

10 *Figure 7. Values of Sobol sensitivity index for the different input parameters for two output*
 11 *variables: the thermal efficiency and the net volumic work.*

12

Table 5. Results of the parametric sensitivity analysis

	NH ₃				R1234yf				R507a			
	η_{th}		$w_{net,vol}$		η_{th}		$w_{net,vol}$		η_{th}		$w_{net,vol}$	
	S_i	ST_i	S_i	ST_i	S_i	ST_i	S_i	ST_i	S_i	ST_i	S_i	ST_i
T_{hw}	35.41%	35.61%	40.88%	41.18%	35.75%	35.95%	42.08%	42.39%	35.14%	35.37%	40.16%	40.49%
T_{cw}	0.25%	0.25%	0.14%	0.14%	0.25%	0.25%	0.12%	0.12%	0.24%	0.24%	0.13%	0.13%
ΔT_{over}	0.00%	0.00%	0.00%	0.00%	0.00%	0.00%	0.00%	0.00%	0.00%	0.00%	0.00%	0.00%
ΔT_{sub}	0.00%	0.00%	0.01%	0.02%	0.00%	0.00%	0.00%	0.00%	0.00%	0.00%	0.00%	0.01%
$\Delta \tilde{T}_{evap}$	22.66%	22.78%	26.16%	26.35%	22.89%	23.01%	26.94%	27.13%	22.49%	22.63%	25.70%	25.91%
$\Delta \tilde{T}_{cond}$	25.14%	25.27%	13.59%	13.73%	25.05%	25.19%	11.97%	12.11%	24.20%	24.36%	13.32%	13.48%
η_{turb}	16.06%	16.51%	18.53%	19.04%	15.60%	16.05%	18.31%	18.81%	17.32%	17.85%	19.95%	20.55%
η_{pump}	0.03%	0.03%	0.03%	0.03%	0.00%	0.00%	0.00%	0.00%	0.06%	0.07%	0.07%	0.07%
ΔP_{cond}	0.00%	0.00%	0.08%	0.09%	0.00%	0.00%	0.01%	0.01%	0.00%	0.00%	0.01%	0.01%
ΔP_{evap}	0.00%	0.00%	0.00%	0.00%	0.00%	0.00%	0.00%	0.00%	0.00%	0.00%	0.00%	0.00%

13 Firstly, values of Sobol sensitivity index S_i are very close to those of total sensitivity index ST_i .
 14 That means that, considering the domain of definition given for input variables (see Table 4),

1 the model can be considered, in a good approximation as additive (it can be represented as a
2 sum of univariate functions).

3 Secondly, there are four very influent parameters that stand out in the investigated case: T_{hw} ,
4 $\Delta\tilde{T}_{cond}$, $\Delta\tilde{T}_{evap}$ and η_{turb} . Variations of cold seawater temperature are not very influent
5 because, for an OTEC application, it is relatively constant and well known, so this interval of
6 variation is very restricted. The pump has a low influence on the output of the simulations. This
7 can be explained by the fact that the work used in the pump is very low compared to the work
8 produced by the turbine. On the contrary, the influence of the isentropic efficiency of the turbine
9 is very important, because it affects directly the work produced by the ORC. The most
10 interesting results are for variables describing the transformations in HEX.

11 Indeed, variations of EMTD in both HEX has a strong influence on outputs (even if $w_{net,vol}$ is
12 a little more influenced by the evaporator than by the condenser), but the subcooling in the
13 condenser, the overheating in the evaporator and pressure drops in both HEX have very low
14 values of sensitivity index. That is to say that, when entropic mean temperature differences are
15 fixed, adding an overheating in the evaporator, for example, doesn't change the values of the
16 criteria used for the working fluid comparison, even if this parameters have an impact on the
17 structure of the cycle itself. Therefore, the use of entropic mean temperatures allows to describe
18 the behavior of HEX by just one parameter for fluid comparison, and thus, when this parameter
19 is fixed for every fluid, we can compare fluids in similar conditions of work. This is the
20 advantage of this model in order to carry out a preliminary comparison of working fluids
21 without prejudging the technology of the components.

22 It is also interesting to notice that the sensitivity analysis gives similar results for the three
23 chosen working fluids. Thus, in the range of variation of the selected parameters, relative
24 performances of this three fluids do not change. Conclusions drawn previously for OTEC are
25 thus valid in the whole domain of variation of the parameters.

26 **5. Conclusion**

27 A model of an Organic Rankine Cycle applied to OTEC is built by using simple parameters
28 ($\Delta\tilde{T}_{evap}$, $\Delta\tilde{T}_{cond}$, η_{pump} , η_{turb} , ...) for describing the different components, in order to be
29 applicable to every kind of technology and to compare performances of different kinds of fluids
30 in similar conditions. For this purpose, heat exchangers are described by the entropic mean
31 temperature difference parameter. This model is used to establish the behavior of 26 fluids,
32 using experimental measurements of an OTEC onshore prototype as input parameters. A
33 comparison of these fluids is then carried out by considering various criteria. In particular, for
34 thermodynamic performances, we use a plot with the representation of a Pareto's frontier on
35 which the choice is based. A parametric sensitivity analysis was then carried out in order to
36 understand the behavior of the model and the importance of each parameter. The main results
37 of this study are:

- 38 - In order to compare pure fluids and mixtures, the entropic mean temperature difference
39 in HEX allows to draw the cycle with a reduced number of hypothesis and is more

1 representative of similar working conditions of the different fluids than traditional
2 parameters such as the output temperature difference.

3 - There is no fluid that meets at the same time great thermodynamic performances, easy
4 implementation, safety and low environmental impacts. However, NH₃ and R507a seem
5 to be good candidates because they both have good thermodynamic performance
6 (thermal efficiency and volumic work). Moreover, NH₃ has very low environmental
7 impacts (GWP, ODP, ALT), but it is toxic and mildly flammable (B2L). R507a is
8 neither toxic nor flammable, but it has high values of GWP and ALT. R1234yf is also
9 a good candidate, even if it ranks second of the thermodynamic study, it is nontoxic
10 unlike NH₃, and it has very low environmental impacts.

11 - The parametric sensitivity analysis revealed that, in the chosen domain of input
12 parameters, the model is approximatively additive and the most relevant parameters are
13 T_{hw} , $\Delta\tilde{T}_{evap}$, $\Delta\tilde{T}_{cond}$, and η_{turb} for this application.

14 This study will be useful for helping in choosing the working fluid of an ORC in a preliminary
15 study preceding the design of the components.

16 Acknowledgements

17 The authors particularly acknowledge Jérôme Vigneron, technician in the laboratory of Physical
18 and Mathematical Engineering for Energy and Environment, for his investment in the
19 experimental work of the laboratory.

20 Funding

21 This work was supported by DCNS Energy, the territorial authority Region Reunion and the
22 laboratory of Physical and Mathematical Engineering for Energy and Environment in Reunion
23 Island.

24 References

- 25 [1] M. S. Quinby-Hunt, D. Sloan, et P. Wilde, « Potential environmental impacts of closed-
26 cycle ocean thermal energy conversion », *Environ. Impact Assess. Rev.*, vol. 7, n° 2, p.
27 169–198, 1987.
- 28 [2] W. H. Avery et C. Wu, « Renewable energy from the ocean-A guide to OTEC », 1994.
- 29 [3] B. F. Tchanche, G. Lambrinos, A. Frangoudakis, et G. Papadakis, « Low-grade heat
30 conversion into power using organic Rankine cycles – A review of various applications »,
31 *Renew. Sustain. Energy Rev.*, vol. 15, n° 8, p. 3963-3979, oct. 2011.
- 32 [4] B. F. Tchanche, M. Pétrissans, et G. Papadakis, « Heat resources and organic Rankine
33 cycle machines », *Renew. Sustain. Energy Rev.*, vol. 39, p. 1185-1199, nov. 2014.
- 34 [5] J.-I. Yoon, C.-H. Son, S.-M. Baek, B. H. Ye, H.-J. Kim, et H.-S. Lee, « Performance
35 characteristics of a high-efficiency R717 OTEC power cycle », *Appl. Therm. Eng.*, vol.
36 72, n° 2, p. 304-308, nov. 2014.

- 1 [6] H. Yuan, N. Mei, et P. Zhou, « Performance analysis of an absorption power cycle for
2 ocean thermal energy conversion », *Energy Convers. Manag.*, vol. 87, p. 199-207, nov.
3 2014.
- 4 [7] X. Zhang, M. He, et Y. Zhang, « A review of research on the Kalina cycle », *Renew.*
5 *Sustain. Energy Rev.*, vol. 16, n° 7, p. 5309-5318, sept. 2012.
- 6 [8] G. Wall, C.-C. Chuang, et M. Ishida, « Exergy study of the Kalina cycle », in *ASME*
7 *Winter Annual Meeting, San Francisco, CA, December*, 1989, p. 10-15.
- 8 [9] H. D. Madhawa Hettiarachchi, M. Golubovic, W. M. Worek, et Y. Ikegami, « The
9 Performance of the Kalina Cycle System 11(KCS-11) With Low-Temperature Heat
10 Sources », *J. Energy Resour. Technol.*, vol. 129, n° 3, p. 243, 2007.
- 11 [10] H. Uehara et Y. Ikegami, « Optimization of a closed-cycle OTEC system », *J. Sol. Energy*
12 *Eng.*, vol. 112, n° 4, p. 247-256, 1990.
- 13 [11] S. Goto, Y. Motoshima, T. Sugi, T. Yasunaga, Y. Ikegami, et M. Nakamura,
14 « Construction of simulation model for OTEC plant using Uehara cycle », *Electr. Eng.*
15 *Jpn.*, vol. 176, n° 2, p. 1-13, juill. 2011.
- 16 [12] J. Bao et L. Zhao, « A review of working fluid and expander selections for organic
17 Rankine cycle », *Renew. Sustain. Energy Rev.*, vol. 24, p. 325-342, août 2013.
- 18 [13] M. J. Lee, D. L. Tien, et C. T. Shao, « Thermophysical capability of ozone-safe working
19 fluids for an organic Rankine cycle system », *Heat Recovery Syst. CHP*, vol. 13, n° 5, p.
20 409-418, 1993.
- 21 [14] M. Z. Stijepovic, P. Linke, A. I. Papadopoulos, et A. S. Grujic, « On the role of working
22 fluid properties in Organic Rankine Cycle performance », *Appl. Therm. Eng.*, vol. 36, p.
23 406-413, avr. 2012.
- 24 [15] B. Saleh, G. Koglbauer, M. Wendland, et J. Fischer, « Working fluids for low-temperature
25 organic Rankine cycles », *Energy*, vol. 32, n° 7, p. 1210-1221, juill. 2007.
- 26 [16] D. Wang, X. Ling, et H. Peng, « Cost-effectiveness performance analysis of organic
27 Rankine cycle for low grade heat utilization coupling with operation condition », *Appl.*
28 *Therm. Eng.*, vol. 58, n° 1-2, p. 571-584, sept. 2013.
- 29 [17] D. Wang, X. Ling, H. Peng, L. Liu, et L. Tao, « Efficiency and optimal performance
30 evaluation of organic Rankine cycle for low grade waste heat power generation », *Energy*,
31 vol. 50, p. 343-352, févr. 2013.
- 32 [18] R. Radermacher, « Thermodynamic and heat transfer implications of working fluid
33 mixtures in Rankine cycles », *Int. J. Heat Fluid Flow*, vol. 10, n° 2, p. 90-102, 1989.
- 34 [19] L. Zhao et J. Bao, « Thermodynamic analysis of organic Rankine cycle using zeotropic
35 mixtures », *Appl. Energy*, vol. 130, p. 748-756, oct. 2014.
- 36 [20] M.-H. Yang et R.-H. Yeh, « Thermo-economic optimization of an organic Rankine cycle
37 system for large marine diesel engine waste heat recovery », *Energy*, vol. 82, p. 256-268,
38 mars 2015.
- 39 [21] Z. Shengjun, W. Huaixin, et G. Tao, « Performance comparison and parametric
40 optimization of subcritical Organic Rankine Cycle (ORC) and transcritical power cycle
41 system for low-temperature geothermal power generation », *Appl. Energy*, vol. 88, n° 8,
42 p. 2740-2754, août 2011.
- 43 [22] R. S. El-Emam et I. Dincer, « Exergy and exergoeconomic analyses and optimization of
44 geothermal organic Rankine cycle », *Appl. Therm. Eng.*, vol. 59, n° 1-2, p. 435-444, sept.
45 2013.
- 46 [23] X. Zhang, M. He, et J. Wang, « A new method used to evaluate organic working fluids »,
47 *Energy*, vol. 67, p. 363-369, avr. 2014.

- 1 [24] M.-H. Yang et R.-H. Yeh, « Analyzing the optimization of an organic Rankine cycle
2 system for recovering waste heat from a large marine engine containing a cooling water
3 system », *Energy Convers. Manag.*, vol. 88, p. 999-1010, déc. 2014.
- 4 [25] J. P. Roy, M. K. Mishra, et A. Misra, « Parametric optimization and performance analysis
5 of a waste heat recovery system using Organic Rankine Cycle », *Energy*, vol. 35, n° 12, p.
6 5049-5062, déc. 2010.
- 7 [26] C. He *et al.*, « The optimal evaporation temperature and working fluids for subcritical
8 organic Rankine cycle », *Energy*, vol. 38, n° 1, p. 136-143, févr. 2012.
- 9 [27] J. Wang, Z. Yan, M. Wang, M. Li, et Y. Dai, « Multi-objective optimization of an organic
10 Rankine cycle (ORC) for low grade waste heat recovery using evolutionary algorithm »,
11 *Energy Convers. Manag.*, vol. 71, p. 146-158, juill. 2013.
- 12 [28] L. Xiao, S.-Y. Wu, T.-T. Yi, C. Liu, et Y.-R. Li, « Multi-objective optimization of
13 evaporation and condensation temperatures for subcritical organic Rankine cycle »,
14 *Energy*, vol. 83, p. 723-733, avr. 2015.
- 15 [29] F. Sun, Y. Ikegami, B. Jia, et H. Arima, « Optimization design and exergy analysis of
16 organic rankine cycle in ocean thermal energy conversion », *Appl. Ocean Res.*, vol. 35, p.
17 38-46, mars 2012.
- 18 [30] M.-H. Yang et R.-H. Yeh, « Analysis of optimization in an OTEC plant using organic
19 Rankine cycle », *Renew. Energy*, vol. 68, p. 25-34, août 2014.
- 20 [31] J.-I. Yoon, C.-H. Son, S.-M. Baek, H.-J. Kim, et H.-S. Lee, « Efficiency comparison of
21 subcritical OTEC power cycle using various working fluids », *Heat Mass Transf.*, vol. 50,
22 n° 7, p. 985-996, 2014.
- 23 [32] K. Z. Iqbal et K. E. Starling, « „Use Of Mixtures as Working Fluids in Ocean Thermal
24 Energy Conversion Cycles“ », in *Proceedings of the Oklahoma Academy of Science*, 1976,
25 vol. 56, p. 114-120.
- 26 [33] T. C. Hung, S. K. Wang, C. H. Kuo, B. S. Pei, et K. F. Tsai, « A study of organic working
27 fluids on system efficiency of an ORC using low-grade energy sources », *Energy*, vol. 35,
28 n° 3, p. 1403-1411, mars 2010.
- 29 [34] N. Yamada, A. Hoshi, et Y. Ikegami, « Thermal efficiency enhancement of ocean thermal
30 energy conversion (OTEC) using solar thermal energy », in *4th International Energy
31 Conversion Engineering Conference and Exhibit (IECEC)*, 2006.
- 32 [35] P. J. T. Straatman et W. G. J. H. M. van Sark, « A new hybrid ocean thermal energy
33 conversion-Offshore solar pond (OTEC-OSP) design: A cost optimization approach »,
34 *Sol. Energy*, vol. 82, n° 6, p. 520-527, juin 2008.
- 35 [36] N. J. Kim, K. C. Ng, et W. Chun, « Using the condenser effluent from a nuclear power
36 plant for Ocean Thermal Energy Conversion (OTEC) », *Int. Commun. Heat Mass Transf.*,
37 vol. 36, n° 10, p. 1008-1013, 2009.
- 38 [37] A. Borsukiewiczgozdur et W. Nowak, « Comparative analysis of natural and synthetic
39 refrigerants in application to low temperature Clausius-Rankine cycle », *Energy*, vol. 32,
40 n° 4, p. 344-352, avr. 2007.
- 41 [38] K. H. Kim, H. J. Ko, et K. Kim, « Assessment of pinch point characteristics in heat
42 exchangers and condensers of ammonia-water based power cycles », *Appl. Energy*, vol.
43 113, p. 970-981, janv. 2014.
- 44 [39] A. Journoud, F. Sinama, et F. Lucas, « Experimental Ocean Thermal Energy Conversion
45 (OTEC) project on the Reunion Island », in *4th International Conference on Ocean
46 Energy*, 2012.
- 47 [40] F. Meunier, P. Neveu, et J. Castaing-Lasvignottes, « Equivalent Carnot cycles for sorption
48 refrigeration: Cycles de Carnot équivalents pour la production de froid par sorption », *Int.
49 J. Refrig.*, vol. 21, n° 6, p. 472-489, 1998.

- 1 [41] J.-P. Boisvert, J. Persello, J.-C. Castaing, et B. Cabane, « Dispersion of alumina-coated
2 TiO₂ particles by adsorption of sodium polyacrylate », *Colloids Surf. Physicochem. Eng.*
3 *Asp.*, vol. 178, n° 1, p. 187–198, 2001.
- 4 [42] M. Pons, « Analysis of the adsorption cycles with thermal regeneration based on the
5 entropic mean temperatures », *Appl. Therm. Eng.*, vol. 17, n° 7, p. 615–627, juillet 1997.
- 6 [43] J. Castaing-Lasvignottes et P. Neveu, « Equivalent Carnot cycle concept applied to a
7 thermochemical solid/gas resorption system », *Appl. Therm. Eng.*, vol. 18, n° 9, p. 745–
8 754, 1998.
- 9 [44] E. Macchi et A. Perdichizzi, « Efficiency prediction for axial-flow turbines operating with
10 nonconventional fluids », *J. Eng. Gas Turbines Power*, vol. 103, n° 4, p. 718–724, 1981.
- 11 [45] A. A. Lakew et O. Bolland, « Working fluids for low-temperature heat source », *Appl.*
12 *Therm. Eng.*, vol. 30, n° 10, p. 1262–1268, 2010.
- 13 [46] Y.-J. Baik, M. Kim, K. C. Chang, et S. J. Kim, « Power-based performance comparison
14 between carbon dioxide and R125 transcritical cycles for a low-grade heat source », *Appl.*
15 *Energy*, vol. 88, n° 3, p. 892–898, 2011.
- 16 [47] S. A. Klein, *Engineering Equation Solver EES Academic Commercial V7. 933*. McGraw
17 Hill, 2007.
- 18 [48] F. Sinama *et al.*, « Etude expérimentale d'un prototype ETM à La Réunion », in *Congrès*
19 *Français de Thermique 2016*, 2016.
- 20 [49] American Society of Heating, Refrigerating and Air-Conditioning Engineers (ASHRAE),
21 *Thermal Environmental Conditions for Human Occupancy*, vol. 55. American Society of
22 Heating, Refrigerating and Air-Conditioning Engineers, 2004.
- 23 [50] A. Saltelli et P. Annoni, « How to avoid a perfunctory sensitivity analysis », *Environ.*
24 *Model. Softw.*, vol. 25, n° 12, p. 1508–1517, 2010.
- 25 [51] F. Campolongo, J. Cariboni, et A. Saltelli, « An effective screening design for sensitivity
26 analysis of large models », *Environ. Model. Softw.*, vol. 22, n° 10, p. 1509–1518, 2007.
- 27 [52] G. E. B. Archer, A. Saltelli, et I. M. Sobol, « Sensitivity measures, ANOVA-like
28 techniques and the use of bootstrap », *J. Stat. Comput. Simul.*, vol. 58, n° 2, p. 99–120,
29 1997.
- 30 [53] B. Sudret, « Global sensitivity analysis using polynomial chaos expansions », *Reliab. Eng.*
31 *Syst. Saf.*, vol. 93, n° 7, p. 964–979, 2008.
- 32 [54] T. Crestaux, O. Le Maître, et J.-M. Martinez, « Polynomial chaos expansion for
33 sensitivity analysis », *Reliab. Eng. Syst. Saf.*, vol. 94, n° 7, p. 1161–1172, 2009.
- 34 [55] F. Conand, F. Marsac, E. Tessier, et C. Conand, « A ten-year period of daily sea surface
35 temperature at a coastal station in Reunion Island, Indian Ocean (July 1993–April 2004):
36 patterns of variability and biological responses », *West. Indian Ocean J. Mar. Sci.*, vol. 6,
37 n° 1, 2008.
- 38 [56] M. Hoarau et M. Salomez, « Note d'opportunités pour l'utilisation de l'Energie
39 Thermique des Mers et la valorisation de l'eau froide profonde à Sainte Rose », *ARER*, p.
40 83, 2009.

1	Nomenclature			
2			<u>Subscripts</u>	
3	T	Temperature [K]	hw	Hot Water at the evaporator inlet
4	η	Efficiency [%]	cw	Cold Water at the condenser inlet
5	q	Specific heat transfer [J.kg^{-1}]		
6	w	Specific work [J.kg^{-1}]	1	Evaporator inlet
7	h	Specific enthalpy [J.kg^{-1}]	2	Turbine inlet
8	s	Specific entropy [$\text{J.kg}^{-1}.\text{K}^{-1}$]	3	Condenser inlet
9	<u>Specific notations</u>		4	Pump inlet
10	$\Delta\tilde{T}$	Entropic mean temperature	is	Isentropic
11		difference [K]	evap	Evaporator
12	w_{net}	Net specific work of the cycle [J.kg^{-1}]	cond	Condenser
13	$w_{net, vol}$	Total volumic work of the cycle [J.m^{-3}]	pump	Pump
14	<u>Acronyms</u>		turb	Turbine
15	ORC	Organic Rankine Cycle	vol	Volumic
16	OTEC	Ocean Thermal Energy Conversion	th	Thermal
17	EMTD	Entropic Mean Temperature Difference	over	Overheating
18	GWP	Global Warming Potential	sub	Subcooling
19	ODP	Ozone Depletion Potential		
20	ALT	Atmospheric Lifetime		