

**HONEY BEE GUT MICROBIAL COMMUNITIES ARE ROBUST TO THE FUNGICIDE
PRISTINE® CONSUMED IN POLLEN**

**GLORIA DEGRANDI-HOFFMAN*, VANESSA CORBY-HARRIS, EMILY WATKINS DEJONG, MONA
CHAMBERS, GEOFFREY HIDALGO**

***corresponding author:**

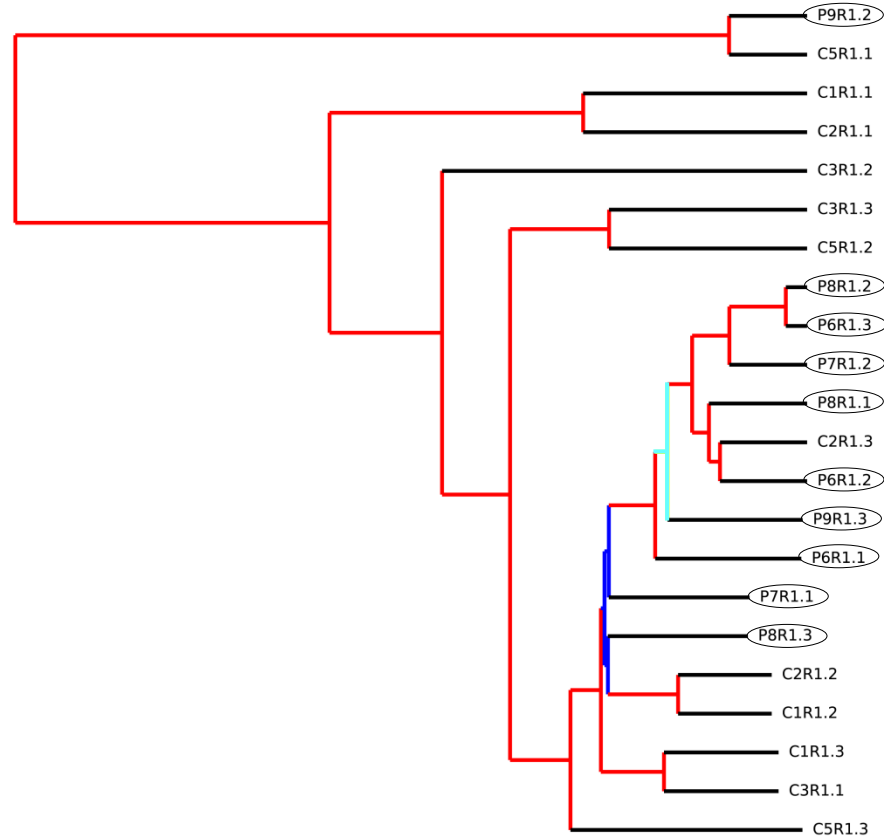
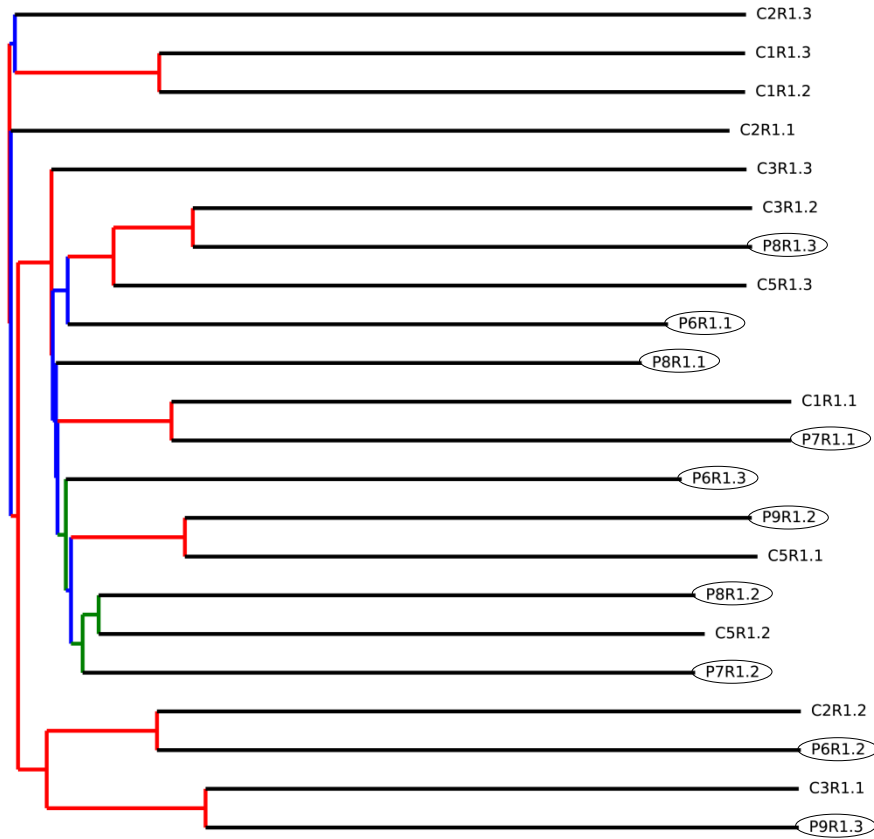
email: gloria.hoffman@ars.usda.gov

**Carl Hayden Bee Research Center, Usda-ars, 2000 East Allen Road, Tucson, Arizona 85719,
USA**

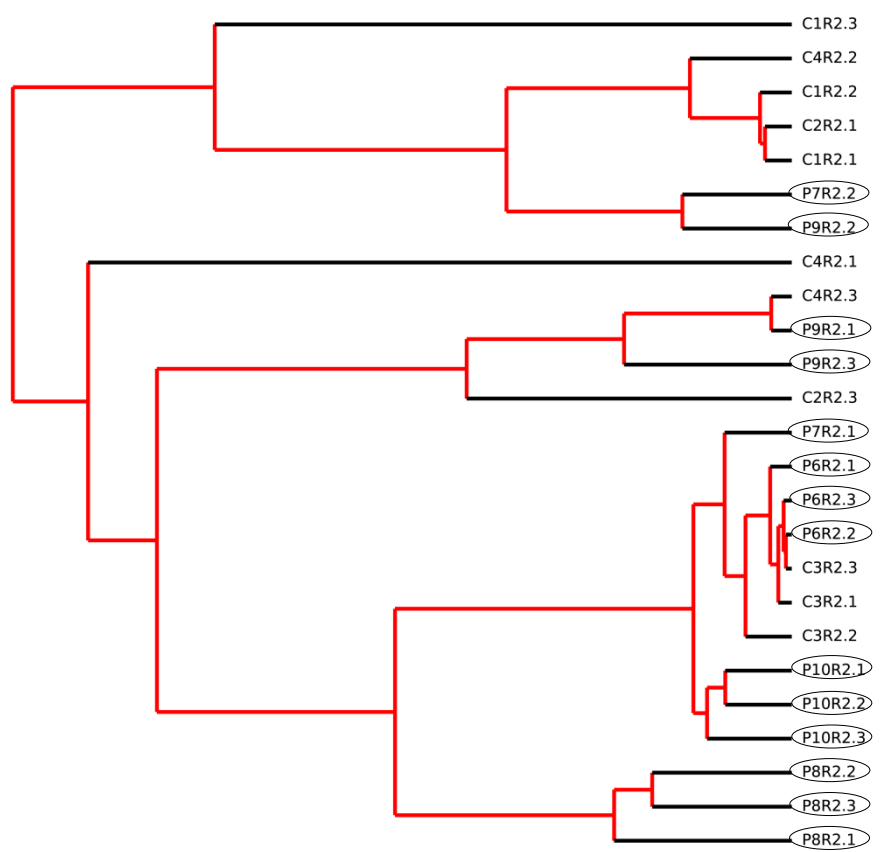
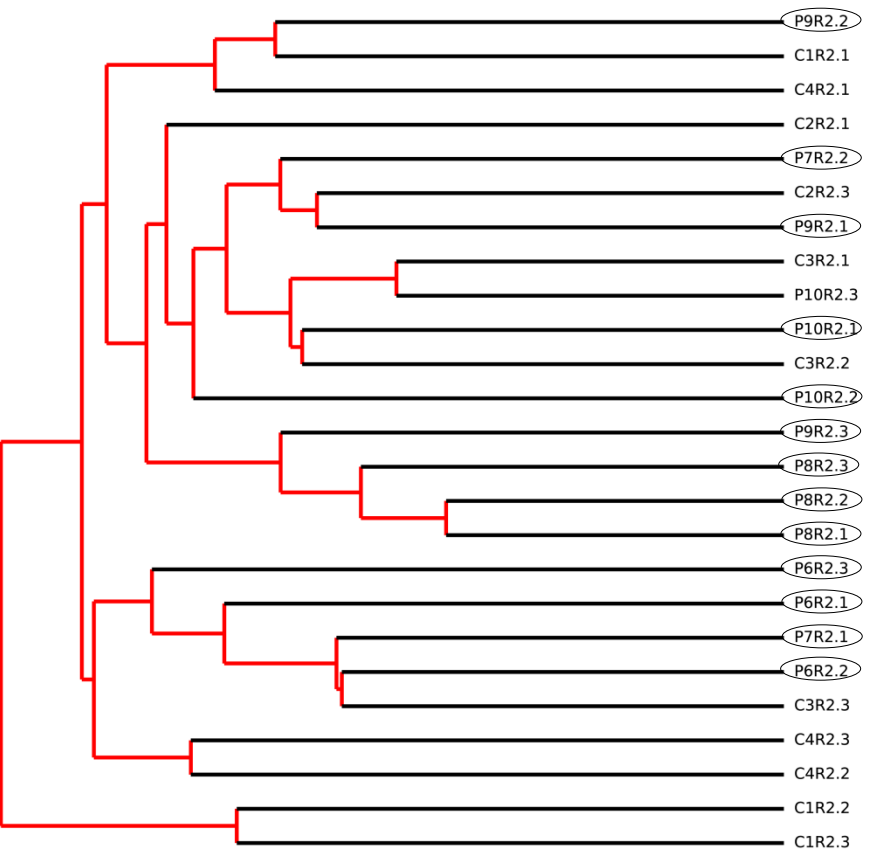
Unweighted UniFrac

Weighted UniFrac

Experiment 1 (1,990 ppb)



Experiment 2 (11,410 ppb)



Online Resource 4. β -diversity among individual nurse sequencing libraries. For each experiments 1 (top panels) and 2 (bottom panels), the unweighted (left panels) and weighted (right panels) UniFrac distances between libraries were calculated and these pairwise distances were plotted using UPGMA phylogenies. Support for these phylogenies was evaluated using a jackknife analysis (see text). Branch tip labels represent sequencing libraries for individual nurse bee guts and correspond to those detailed in Online Resource 1. Libraries treated with Pristine® are circled at the tips of the phylogeny; untreated libraries are not circled. Jackknife support for the branch nodes is indicated by color: red = 75-100%, aqua = 50-75%, green = 25-50%, and blue = < 25%. 1,990 ppb of Pristine® was added to the treated colonies in experiment 1 and 11,410 ppb of Pristine® was added to the treated colonies in experiment 2.