

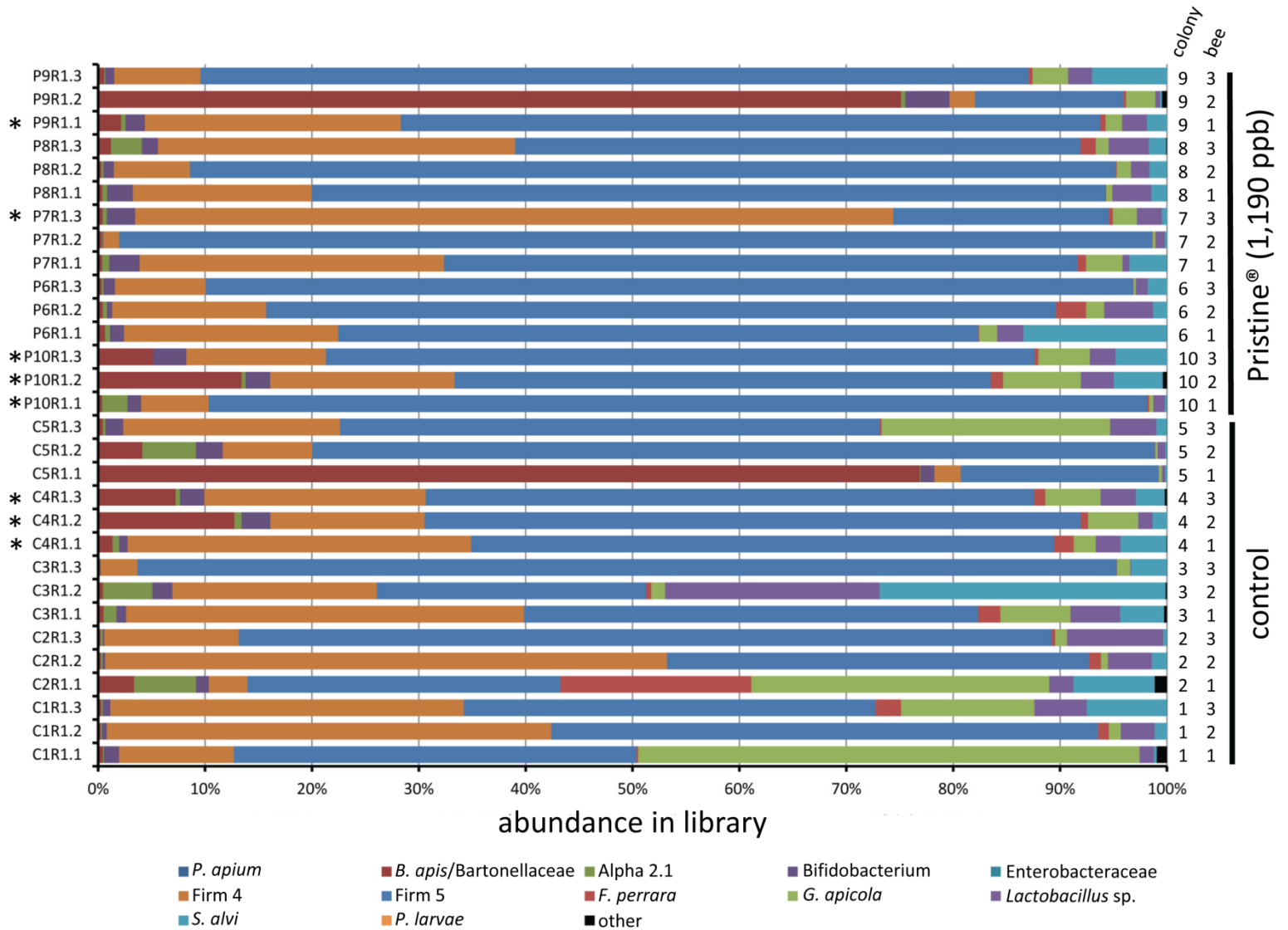
Honey bee gut microbial communities are robust to the fungicide Pristine® consumed in pollen

Gloria DeGrandi-Hoffman*, Vanessa Corby-Harris, Emily Watkins DeJong, Mona Chambers, Geoffrey Hidalgo

***Corresponding Author:**

email/ gloria.hoffman@ars.usda.gov

Carl Hayden Bee Research Center, USDA-ARS, 2000 East Allen Road, Tucson, Arizona 85719, USA



Online Resource 2. The relative abundance of bacterial taxa in nurse honey bee guts for Experiment 1. The pollen provided to colonies was treated with the fungicide Pristine® diluted in water at a concentration of 1,990 ppb. Water only was applied to the control pollen. Each bar represents the relative abundance of bacteria in the gut of one nurse worker honey bee (number of sequences for that taxon/total sequences for the library). A table of absolute abundances is presented in Online Resource 1. Libraries marked with an asterisk (*) were not included in calculations of α - or β -diversity due to small sample size.