



**HAL**  
open science

## Fractionated stereotactic radiotherapy of benign skull-base tumors: a dosimetric comparison of volumetric modulated arc therapy with Rapidarc® versus non-coplanar dynamic arcs

Fanny Martin, Florian Magnier, Lucie Berger, Jessica Miroir, E. Chautard, Pierre Verrelle, Michel Lapeyre, Julian Biau

### ► To cite this version:

Fanny Martin, Florian Magnier, Lucie Berger, Jessica Miroir, E. Chautard, et al.. Fractionated stereotactic radiotherapy of benign skull-base tumors: a dosimetric comparison of volumetric modulated arc therapy with Rapidarc® versus non-coplanar dynamic arcs. *Radiation Oncology*, 2016, 11 (1), pp.58. 10.1186/s13014-016-0632-8 . hal-01643049

**HAL Id: hal-01643049**

**<https://hal.science/hal-01643049v1>**

Submitted on 21 Nov 2017

**HAL** is a multi-disciplinary open access archive for the deposit and dissemination of scientific research documents, whether they are published or not. The documents may come from teaching and research institutions in France or abroad, or from public or private research centers.

L'archive ouverte pluridisciplinaire **HAL**, est destinée au dépôt et à la diffusion de documents scientifiques de niveau recherche, publiés ou non, émanant des établissements d'enseignement et de recherche français ou étrangers, des laboratoires publics ou privés.

RESEARCH

Open Access



# Fractionated stereotactic radiotherapy of benign skull-base tumors: a dosimetric comparison of volumetric modulated arc therapy with Rapidarc<sup>®</sup> versus non-coplanar dynamic arcs

Fanny Martin<sup>1</sup>, Florian Magnier<sup>2</sup>, Lucie Berger<sup>2</sup>, Jessica Miroir<sup>1</sup>, Emmanuel Chautard<sup>3</sup>, Pierre Verrelle<sup>1,3</sup>, Michel Lapeyre<sup>1</sup> and Julian Biau<sup>1,3\*</sup>

## Abstract

**Background:** Benign tumors of the skull base are a challenge when delivering radiotherapy. An appropriate choice of radiation technique may significantly improve the patient's outcomes. Our study aimed to compare the dosimetric results of fractionated stereotactic radiotherapy between non-coplanar dynamic arcs and coplanar volumetric modulated arc therapy (Rapidarc<sup>®</sup>).

**Methods:** Thirteen patients treated with Novalis TX<sup>®</sup> were analysed: six vestibular schwannomas, four pituitary adenomas and three meningioma. Two treatment plans were created for each case: dynamic arcs (4–5 non coplanar arcs) and Rapidarc<sup>®</sup> (2 coplanar arcs). All tumors were >3 cm and accessible to both techniques. Patients had a stereotactic facemask (Brainlab) and were daily repositioned by Exactrac<sup>®</sup>. GTV and CTV were contoured according to tumor type. A 1-mm margin was added to the CTV to obtain PTV. Radiation doses were 52.2–54 Gy, using 1.8 Gy per fraction. Treatment time was faster with Rapidarc<sup>®</sup>.

**Results:** The mean PTV V95 % was 98.8 for Rapidarc<sup>®</sup> and 95.9 % for DA ( $p = 0.09$ ). Homogeneity index was better with Rapidarc<sup>®</sup>: 0.06 vs. 0.09 ( $p = 0.01$ ). Higher conformity index values were obtained with Rapidarc<sup>®</sup>: 75.2 vs. 67.9 % ( $p = 0.04$ ). The volume of healthy brain that received a high dose (V90 %) was 0.7 % using Rapidarc<sup>®</sup> vs. 1.4 % with dynamic arcs ( $p = 0.05$ ). Rapidarc<sup>®</sup> and dynamic arcs gave, respectively, a mean D40 % of 10.5 vs. 18.1 Gy ( $p = 0.005$ ) for the hippocampus and a Dmean of 25.4 vs. 35.3 Gy ( $p = 0.008$ ) for the ipsilateral cochlea. Low-dose delivery with Rapidarc<sup>®</sup> and dynamic arcs were, respectively, 184 vs. 166 cm<sup>3</sup> for V20 Gy ( $p = 0.14$ ) and 1265 vs. 1056 cm<sup>3</sup> for V5 Gy ( $p = 0.67$ ).

**Conclusions:** Fractionated stereotactic radiotherapy using Rapidarc<sup>®</sup> for large benign tumors of the skull base provided target volume coverage that was at least equal to that of dynamics arcs, with better conformity and homogeneity and faster treatment time. Rapidarc<sup>®</sup> also offered better sparing of the ipsilateral cochlea and hippocampus. Low-dose delivery were similar between both techniques.

**Keywords:** Benign skull base tumors, Fractionated stereotactic radiotherapy, Novalis, Volumetric modulated arc therapy, Dynamic arc therapy

\* Correspondence: julian.biau@clermont.unicancer.fr

<sup>1</sup>Department of Radiotherapy, Centre Jean Perrin, 63011 Clermont-Ferrand, France

<sup>3</sup>Clermont Auvergne University, EA7283 CREaT, 63011 Clermont-Ferrand, France

Full list of author information is available at the end of the article



## Background

Tumors of the skull base, such as meningioma, pituitary adenoma, and acoustic neuroma, are a challenge when delivering radiotherapy because of their close proximity to organs at risk (OARs) [1–3]. A sufficient dose has to be delivered to the target volume while also sparing the numerous OARs, such as the brainstem, chiasm, optic nerves, cochleas, hippocampus, and healthy brain.

Benign tumors grow without invading the surrounding structures and have a low tendency to undergo metastasis, thus leading to a long life expectancy [1, 4–8]. Generally no prophylactic irradiation of larger regional volumes is needed for these tumors due to their minimal invasiveness. Thus, highly sophisticated techniques are needed to avoid damage and to achieve objectives. Indeed, fractionated stereotactic radiotherapy (FSRT) can be of interest to treat this kind of tumors [9–12]. An appropriate choice of radiation technique may significantly improve the patient's quality of life after treatment. Non-coplanar multiple dynamic arcs have been often used to achieve high conformity while sparing OARs [2, 13–17]. More recently, volumetric modulated arc therapy (VMAT) has been widely developed. VMAT aims to achieve several objectives at once: (i) to improve sparing of OARs and healthy tissue; (ii) to maintain or improve the same degree of target coverage; and (iii) to reduce treatment time.

The purpose of our study was to compare the dosimetric impact between non-coplanar dynamic arcs (DA) and VMAT using Rapidarc® (RA; Varian Medical Systems, Palo Alto, CA, USA) in terms of sparing of OARs, target coverage, and low-dose delivery to treat benign skull-based tumors using FSRT.

## Methods

### Patients

Thirteen consecutive patients treated in our institution with FSRT during the year 2013 for benign skull-base tumors, sized >3 cm in diameter, were included in this study. There were three meningiomas, four pituitary adenomas, and six acoustic neuromas. Eight patients had undergone previous surgery and were being irradiated for recurrence. All patients were treated with Novalis TX® (Varian Medical Systems, Palo Alto, CA, USA and Brainlab, Feldkirchen, Germany) using a non-invasive thermoplastic mask plus a localizer box (Brainlab, Feldkirchen, Germany). Positioning of the patients was performed using a ExacTrac® stereoscopic X-ray system (Brainlab, Feldkirchen, Germany) and a robotic couch with 6° of freedom. Treatments were

permitted when the setup error was <0.7 mm translation and 0.7° of rotation [10–12, 18].

A planning CT was acquired of 1.25-mm thickness and was matched with the dosimetric MRI sequences of interest using Iplan® TPS, version 4.1 (Brainlab, Feldkirchen, Germany). The gross tumor volume (GTV) was defined using contrast-enhanced MRI and/or other sequences of interest. For non-operated patients, the clinical target volume (CTV) corresponded to the GTV. For operated patients, the CTV corresponded to the GTV +/- the tumor bed. The CTV was then expanded symmetrically by 1 mm in all dimensions to create the planning target volume (PTV). This margin was determined to account for setup errors of the patient, motion within the thermoplastic frameless mask, plus repositioning system Exactrac® [10–12, 18].

A conventional prescription was given: i.e., 52.2 Gy to 11 patients and 54 Gy to 2 patients (1.8 Gy/fraction). The following OARs were contoured: lenses, eyeballs, optic nerves, chiasm, pituitary gland, brainstem, spinal cord, cerebellum, cochlea, hippocampus and healthy brain (which corresponded to the brain minus PTV). The bilateral hippocampus were considered as a single organ and contoured on a T1-weighted MRI axial sequence using the RTOG 0933 hippocampal atlas [19]. Following Gondi et al., a hippocampal avoidance region was generated by expanding the hippocampal contour by 5-mm volumetrically margin [19, 20].

Considering that the geometric uncertainty in the radiotherapy process was <1 mm, according to our defined stereotactic conditions, we did not draw margins around the OARs when to produce planning OAR volumes (PRVs) [21].

### Treatment plans

Two treatments plans were created for each case: DA and RA. Experienced physicists independently created each plan. Plans were optimized using High Definition MLC 120 (HD MLC). This had a spatial resolution of 2.5 mm at the isocenter for the central 8 cm and of 5 mm in the outer 2 × 7 cm region.

The planning process consisted of two steps. The first step was to obtain that at least 95 % of the PTV received 95 % of the prescribed dose. The second step was to optimize the OARs sparing without compromising PTV coverage. For the OARs, the following dose constraints were used: for chiasm, optic nerves and brainstem, maximum doses (D2%) <54 Gy; for spinal cord, D2% <45 Gy; for cochleas, a mean dose (Dmean) <30 Gy and a D2% <40 Gy (when feasible) and for lenses, a D2% <2 Gy [19, 20, 22, 23].

**Non-coplanar dynamic arcs (DA)**

All DA plans were created with arcs of 6-MV photons. Five non-coplanar arcs were used for twelve patients and four for one patient. The final calculations were performed using Iplan® TPS, version 4.1, using a pencil-beam algorithm with a spatial resolution of 2.5 mm. This formed a conformal treatment where the leaf positions were adjusted every 10° using Beam Eye View. The collimator was set at zero for all plans.

**Coplanar VMAT Rapidarc® (RA)**

All the RA plans were created with two full coplanar arcs for 6-MV photons. The first arc was planned in a clockwise direction and the second in a counter clockwise direction. For all the plans, the collimator was rotated at 30° for the first arc and at 330° for the second arc to reduce the tongue-and-groove effect. The maximum dose rate was set at 600 MU/min. Couch parameters were also added to the plan to account for attenuation of the mega-voltage beams. Final calculations were performed using AAA algorithm on Eclipse® version 10 (Varian Medical Systems, Palo Alto, CA, USA) [24]. The arc optimization algorithm, Progressive Resolution Optimizer used in Rapidarc®, optimized leaf position, dose rate, and gantry speed. Arc amplitudes were contained between 60 and 120°. RA plans followed the International Commission on Radiation Units and Measurements Report 83 recommendations [25].

**Quality control**

After approval from the radiotherapist and physicist, quality controls were done to compare the calculated and measured radiation doses. For RA, we used a 3D comparison with a Delta 4 PT® system (ScandiDos, Uppsala, Sweden). Plans were accepted when >95 % of the local gamma index values were above the criterion of 3 % and 3 mm [26]. For DA, the plans were verified using a punctual ionization chamber measurement (PinPoint® ionization chamber, PTW, Freiburg, Germany) positioned in a Lucy® 3D QA Phantom (Standard Imaging, Middleton, USA) and were accepted when the gap between the calculated and measured radiation dose was <2 %.

**Analyses**

The plans analyses were based on dose–volume histogram (DVH) data. For OARs D2% and Dmean were noted according to OAR type. For the hippocampus, we added D40% [19, 20, 27]. For PTV, the parameters of V90%, V95%, and V107% were also picked up as well as D50%, D95%, D2%, D98% and Dmean. Vx% is the volume of the structure receiving a dose ≥ x%. Dx% is the minimum dose that receive x% of the structure volume.

We also calculated two indexes for the PTV: a conformity index (CI) and a homogeneity index (HI).

The CI was defined as follows:

$$CI = (V95\% \cap VPTV)^2 / (V95\% * VPTV) \quad [25, 28]$$

Where V95 % was a volume within the 95 % isodose and VPTV was the volume of the PTV. The higher values of CI indicated better PTV conformity.

HI was defined as follows:

$$HI = [D2\% - D98\%] / Dmean$$

where D2 % was the dose delivered to 2 % of the PTV volume, D98 % was the dose delivered to 98 % of the PTV volume, and Dmean was the mean dose to the PTV. Small values of HI indicated more homogeneous irradiation of the PTV.

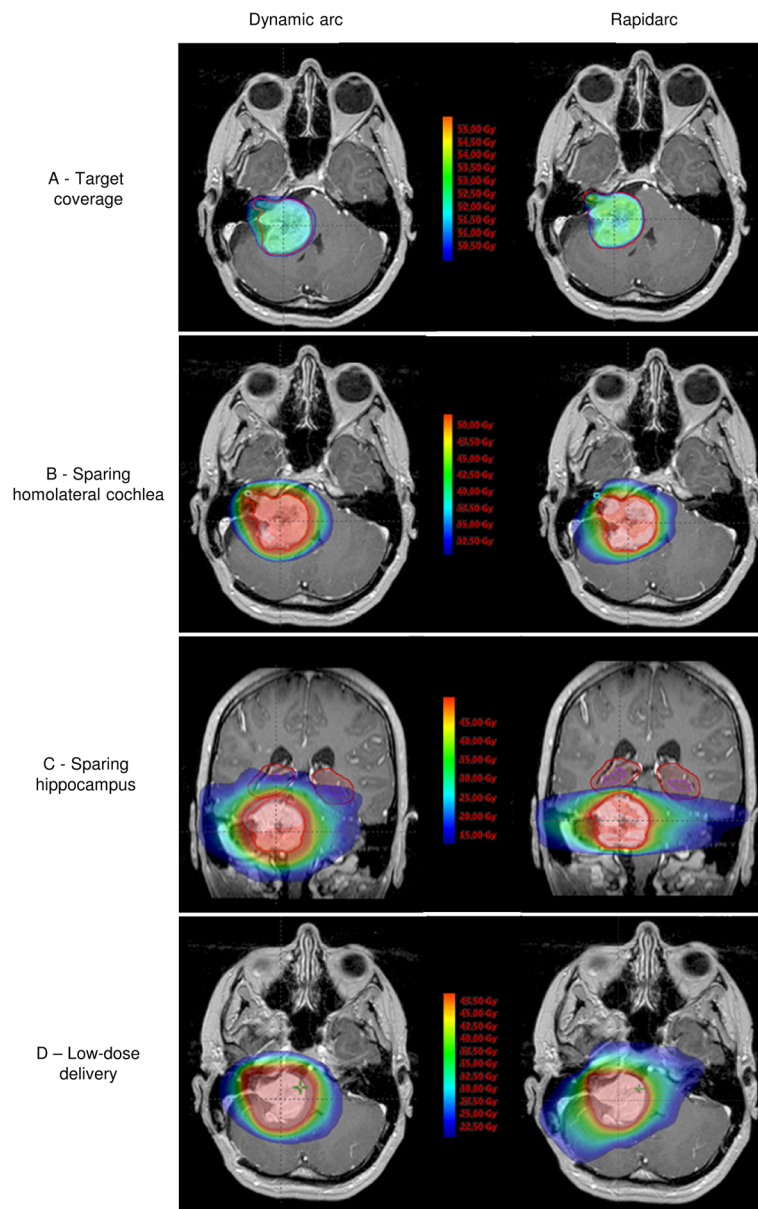
Statistical analysis was performed using R v2.15.1 (<http://www.cran.r-project.org>). To compare the doses for the different modalities, non-parametric Wilcoxon tests for paired samples were used. If the associated *p*-value was less than the significance level ( $\alpha = 0.05$ ), it was assumed that there was a statistically significant difference between the compared data sets.

**Results****Target coverage (Fig. 1a)**

The mean volume of CTV was 23.0 cm<sup>3</sup> (range: 3.1–69.5). The mean volume of a PTV was 29.7 cm<sup>3</sup> (range: 4.7–135.5). Table 1 summarizes the results of DVH analyses for target coverage. All DA and RA plans achieved 95 % isodose coverage for at least 95 % of the PTV. The mean V95% of the PTV was 98.8 % for RA and 95.9 % for DA (*p* = 0.09). V107 % was 0.15 % for DA vs. 0.01 % for RA; *p* = 0.36. D95 % was superior with RA: 51.3 Gy (97.7 %) vs. 50.0 Gy (95.2 %); *p* = 0.006. Higher conformity index values were obtained with RA: 75.2 vs. 67.9 % (*p* = 0.04). RA led to better homogeneity compared to DA: HI of 0.06 vs. 0.09; *p* = 0.01.

**Organs at risk (Fig. 1b and c)**

Table 2 summarizes the results of DVH analyses for OARs. For the ipsilateral cochlea, RA yield the lowest mean dose (Dmean of 25.4 vs. 35.3 Gy, *p* = 0.008). For the hippocampus Dmean and D40% were lower with RA (Dmean of 11.4 vs. 17.5 Gy, *p* = 0.006; D40% of 10.5 vs. 18.1, *p* = 0.005). Also, the mean volume of healthy brain that received a high dose (V90%) was 0.7 % using RA vs. 1.4 % with DA (*p* = 0.05). Inversely, for eyeballs, lenses, pituitary gland (pituitary adenoma excluded) and chiasm, DA was significantly less irradiative compared to RA; both techniques were below the dose constraints.



**Fig. 1** Example of the dose distribution of a patient with a large skull base tumor with non-coplanar dynamic arcs (left) and VMAT (RapidArc®) (right). **a**) Comparison for target coverage. **b**) Comparison for sparing ipsilateral cochlea. **c**) Comparison for sparing hippocampus. **d**) Comparison for low-dose irradiation

**Low-dose irradiation (Fig. 1d)**

Table 3 summarizes the results of DVH analyses for low-dose irradiation inside the outer contour. There were no significant differences between mean low-dose volumes of RA and DA: respectively, 184 vs. 166 cm<sup>3</sup> for V20 Gy (*p* = 0.14) and 1265 vs. 1056 cm<sup>3</sup> for V5 Gy (*p* = 0.17).

**Discussion**

VMAT using RA and non-coplanar DA in FSRT for benign skull-base tumors both provided acceptable

dosimetric results. However, RA was more conformal and homogeneous and offered better sparing of OARs. RA also had a faster treatment time.

Target-volume coverage was acceptable for both techniques, with the 95 % isodose covering a higher volume for RA (98.8 vs. 95.9 %; *p* = 0.09). However, this difference was not significant, probably due to the small number of patients in our study. One limit of this comparison is that (especially for DA, which is a forwardly planned technique), the experience of the planner to some extent determines the quality of

**Table 1** Summary of dosimetric results for planning target volumes (PTV) on the cohort of 13 patients

Indices	Dynamic arc (DA)	Rapidarc (RA)	<i>p</i> -value
D50 % (Gy) (%)	52.5 ± 1.2	52.6 ± 0.7	DA vs RA <i>p</i> = 0.54
	100.0 ± 1.7	100.2 ± 0.2	
D95 % (Gy) (%)	50.0 ± 1.2	51.3 ± 0.8	DA vs RA <i>p</i> = 0.006
	95.2 ± 1.6	97.7 ± 0.9	
D2 % (Gy) (%)	54.3 ± 1.0	53.6 ± 0.8	DA vs RA <i>p</i> = 0.01
	103.5 ± 1.5	102.1 ± 0.6	
D mean (Gy) (%)	52.2 ± 0.9	52.3 ± 0.7	DA vs RA <i>p</i> = 0.17
	99.4 ± 1.2	99.5 ± 1.1	
D98 % (Gy) (%)	49.8 ± 1.9	50.5 ± 0.8	DA vs RA <i>p</i> = 0.25
	94.9 ± 2.9	96.2 ± 1.6	
V95 % (%)	95.9 ± 5.5	98.8 ± 1.0	DA vs RA <i>p</i> = 0.09
V107 % (%)	0.15 ± 0.5	0.01 ± 0	DA vs RA <i>p</i> = 0.36
CI (%)	67.9 ± 8.3	75.2 ± 10.4	DA vs RA <i>p</i> = 0.04
HI	0.09 ± 0	0.06 ± 0	DA vs RA <i>p</i> = 0.01

Data presented the mean doses of all patients ± standard deviation. Bold techniques means that this technique is superior for this organ in particular. *Nb* Vx% = minimum x% of prescribed dose received by the volume and Dx% is the minimum dose received by x% of the structure volume, *CI* Conformity Index, *HI* Homogeneity Index

the plan and thus influences the results of this comparative study.

Few published studies have compared DA and intensity-modulated radiotherapy (IMRT) for intracranial tumors; most have used step-and-shoot IMRT and not VMAT [29–31]. Ding et al. [29] performed a planning study in 15 patients and compared 3D conformal radiotherapy, DA, and step-and-shoot IMRT for FSRT to treat brain tumors. They concluded that both DA and IMRT were suitable in most cases, but that IMRT was best for larger tumors (PTV > 100 cm<sup>3</sup>). Wiggeraad et al. [31] compared step-and-shoot IMRT and DA to treat intracranial tumors at various sites, and of different sizes and shapes, including mostly gliomas and meningioma. They found that both DA and IMRT were acceptable in most cases. However, they found that IMRT offered a statistically better mean CI in concave intracranial tumors. CI quantifies the best adaptation to shape the 95 % isodose envelope to the exact shape of the PTV [28]. We found that RA provided the best target volume conformity (CI of 75.2 vs. 67.9; *p* = 0.04). Similar results have been found when comparing VMAT to DA for different localizations, such as lung and prostate cancers [32–35]. As a result of this better conformity, we found that healthy brain received significantly less high radiation doses with RA (V90% of 0.7 % using RA vs. 1.4 % with DA; *p* = 0.05). This is consistent with the study by Anand et al. [30] who compared RA and

DA for recurrent high-grade gliomas that were reirradiated with FSRT. They found a significantly better CI with RA and that RA delivered a significantly lesser dose to previously irradiated high-dose brain volumes, possibly minimizing the risk of radionecrosis.

In our opinion, dose homogeneity is an important aspect of the quality of planning, especially for skull-base tumors where OARs are often located partially inside the PTV. It is important to maintain very good dose homogeneity because intra- and inter-fraction uncertainties may cause serious adverse effects when hotspots occur near these OARs. In our study, the RA plans gave the best homogeneity (HI of 0.06 with RA vs. 0.09 with DA; *p* = 0.01). This result is consistent with most studies that have compared VMAT with DA [32–35].

Another important aspect for FSRT for benign skull-base tumors is to spare critical OARs [36]. We found dosimetric constraints were respected for all OARs using both techniques. However, we found significant dosimetric benefits using RA for the ipsilateral cochlea and the hippocampus. This may be explained by optimization: constraints to these OARs were included in the dose calculation and the inverse planification for RA. In our study, Dmean to the ipsilateral cochlea was significantly lower with RA. Dmean was lower of 10 Gy in average, which can be particularly beneficial in some cases.

Several studies have attempted to relate mean cochlear dose to hearing loss and have reported a significant increase in hearing loss when dose received by the cochlea was >45–50 Gy [36–38]. Sparing of normal tissue is also very crucial for the hippocampus because these benign tumors are associated with a long life expectancy. The association between hippocampal dose and long-term neurocognitive function impairment for benign or low-grade adult brain tumors treated with FSRT has been evaluate by Gondi et al. [20]. In their study, biologically equivalent doses, in 2-Gy fractions (assuming an  $\alpha/\beta$  ratio of 2 Gy) that were >7.3 Gy to 40 % of the bilateral hippocampus, was significantly associated with long-term memory impairment. A phase-II study (RTOG 0933) has confirmed these results in patients treated for brain metastasis [23]. Hippocampal avoidance, defined here as D100 % <9 Gy and Dmax <16 Gy during whole-brain radiotherapy (30 Gy in 10 fractions), was associated with significant memory preservation at 4 months compared to a historical control cohort. Even if dose constraints to the hippocampus are not totally well established, in our study we found that Dmean and D40 % were significantly lower with RA (Dmean of 11.4 vs. 17.5 Gy, *p* = 0.006; D40 % of 10.5 vs. 18.1, *p* = 0.005).

**Table 2** Summary of dosimetric results for organs at risk (OAR) on the cohort of 13 patients

Organs		Dynamic arc (DA)	Rapidarc (RA)	p-value
Brainstem	D2 % (Gy)	47.4 ± 13.6	47.1 ± 12.0	DA vs RA p = 0.81
Spinal cord	D2 % (Gy)	8.9 ± 5.2	1.8 ± 1.9	DA vs <b>RA</b> p = 10–4
Pituitary gland <sup>a</sup>	D2 % (Gy)	23.7 ± 19	28.6 ± 16.5	<b>DA</b> vs RA p = 0.01
	D mean (Gy)	17.3 ± 16	22.2 ± 15.4	<b>DA</b> vs RA p = 0.02
Chiasm	D2 % (Gy)	32.7 ± 22.5	29.3 ± 23.4	DA vs <b>RA</b> p = 0.01
Hippocampus	D mean (Gy)	16.7 ± 9.2	11.9 ± 5.5	DA vs <b>RA</b> p = 0.006
	D40 % (Gy)	16.2 ± 10.5	9.9 ± 5.7	DA vs RA p = 0.005
Ipsilateral cochlea	D2 % (Gy)	39.4 ± 18.0	33.8 ± 13.8	DA vs <b>RA</b> p = 0.008
	D mean (Gy)	35.3 ± 18.0	25.4 ± 9.7	DA vs <b>RA</b> p = 0.008
Controlateral cochlea	D2 % (Gy)	12.5 ± 12.3	17.9 ± 8.4	<b>DA</b> vs RA p = 0.05
	D mean (Gy)	10.8 ± 11.1	15.8 ± 7.9	<b>DA</b> vs RA p = 0.04
Cerebellum	D mean (Gy)	8.7 ± 7.0	10.7 ± 5.6	DA vs RA p = 0.11
Ipsilateral lens	D2 % (Gy)	1.1 ± 1.5	3.1 ± 2.2	<b>DA</b> vs RA p = 0.01
	D mean (Gy)	0.9 ± 1.3	2.4 ± 1.9	<b>DA</b> vs RA p = 0.01
Controlateral lens	D2 % (Gy)	1.4 ± 1.9	3.2 ± 2.1	<b>DA</b> vs RA p = 0.01
	D mean (Gy)	1.1 ± 1.5	2.5 ± 1.9	<b>DA</b> vs RA p = 0.01
Ipsilateral optic nerve	D2 % (Gy)	26.8 ± 23.1	26.3 ± 22.5	DA vs RA p = 0.83
Controlateral optic nerve	D2 % (Gy)	21.7 ± 19.9	24.0 ± 20.6	DA vs RA p = 0.62
Ipsilateral eyeball	D2 % (Gy)	4.1 ± 2.9	9.2 ± 4.5	<b>DA</b> vs RA p = 10–4
	D mean (Gy)	0.6 ± 0.9	1.4 ± 1.3	DA vs RA p = 0.09
Controlateral eyeball	D2 % (Gy)	3.3 ± 3	10.2 ± 4.9	<b>DA</b> vs RA p = 10–4
	D mean (Gy)	0.2 ± 0.3	1.5 ± 1.4	<b>DA</b> vs RA p = 0.002
Healthy brain (i-e brain-PTV)	D mean (Gy)	6.7 ± 2.7	5.1 ± 1.8	DA vs <b>RA</b> p = 0.002
	V100 % (%)	0.4 ± 0.8	0.02 ± 0	DA vs <b>RA</b> p = 0.02
	V95 % (%)	0.9 ± 1.2	0.3 ± 0.2	DA vs <b>RA</b> p = 0.03
	V90 % (%)	1.4 ± 1.4	0.7 ± 0.4	DA vs <b>RA</b> p = 0.05
	V80 % (%)	2.2 ± 2.1	1.3 ± 0.7	DA vs RA p = 0.06

Data presented the mean doses of all patients ± standard deviation. Bold techniques means that this technique is superior for this organ in particular. *Nb* Vx% = minimum x% of prescribed dose received by the volume and Dx% is the minimum dose received by x% of the structure volume. <sup>a</sup>Pituitary adenomas treatments excluded

In this study, we did not use hard constraints to the hippocampus for inverse planning with RA. It may be possible to lower these doses further with RA using inverse planning and without compromising PTV coverage too much.

Another important issue is comparing the low-dose deliveries of these two techniques. Indeed, some authors support that increasing normal tissue irradiation to low doses might increase the incidence of solid cancers in long-term survivors [39]. In our study, we did not find any significant difference in terms of low-dose volumes between RA and DA. Wiggenraad et al. [31] found similar results; however, they noted that more monitor units were needed with IMRT, even though they did not find a statistically significant difference between IMRT and DA with respect to the volume of irradiated brain tissue.

**Conclusions**

FSRT, using coplanar VMAT with Rapidarc®, allowed target-volume coverage that was at least equal to that of non-coplanar multiple dynamic arcs while

**Table 3** Summary of dosimetric results for low-dose delivery inside the outer contour on the cohort of 13 patients

Indices	Dynamic arc (DA)	Rapidarc (RA)	p-value
Dmean (Gy)	3.9 ± 1.9	3.7 ± 1.7	DA vs RA p = 0.41
V30 Gy (cm <sup>3</sup> )	100.5 ± 99.7	92.6 ± 72.9	DA vs RA p = 0.49
V20 Gy (cm <sup>3</sup> )	166.1 ± 158.8	184.4 ± 127.0	DA vs RA p = 0.14
V10 Gy (cm <sup>3</sup> )	425.1 ± 328.8	476.4 ± 226.4	DA vs RA p = 0.09
V5 Gy (cm <sup>3</sup> )	1056.0 ± 569.7	1264.9 ± 1551.6	DA vs RA p = 0.17

Data presented the mean doses of all patients ± standard deviation. *Nb* Vx% = minimum x% of prescribed dose received by the volume and Dx% is the minimum dose received by x% of the structure volume

also offering better sparing of the ipsilateral cochlea and hippocampus. Rapidarc® was also more conformal and homogeneous. Low-dose volumes were similar between both techniques. Treatment time was also reduced with Rapidarc®. In our institution, we now preferentially treat large benign tumors (>3 cm) of the skull base using Rapidarc®.

## Declaration

### Ethics approval and consent to participate

This work did not require any written patient consent. The local ethics committee of Centre Jean Perrin approved this work.

### Consent for publication

Not applicable.

### Abbreviations

CI: conformity index; CTV: clinical target volume; DA: non-coplanar dynamic arcs; DVH: dose–volume histogram; FSRT: fractionated stereotactic radiotherapy; GTV: gross tumor volume; HI: homogeneity index; IMRT: intensity-modulated radiotherapy; OAR: organ at risk; PTV: planning target volume; RA: Rapidarc®; VMAT: volumetric modulated arc therapy.

### Competing interests

The authors declare that they have no competing interests.

### Authors' contributions

FMartin conceived the study, collected the data and drafted the manuscript; FMagnier participated in the study design and interpretation and performed treatment plan analyses; LB participated in the study design and interpretation and performed treatment plan analyses; EC performed the statistical analyses and participated in interpretation; JM participated in the study design and interpretation; PV participated in the study design and interpretation; ML participated in the study design and interpretation; JB conceived the study, participated in interpretation of the data and drafted the manuscript. All authors read and approved the final manuscript.

### Acknowledgements

The authors wish to thank Fanny Renzi and Xavier Sudre for their assistance with data collection and Fabrice Kwiatkowski for his help with statistics.

### Availability of data and materials

The datasets supporting the conclusions of this article are included within the article.

### Funding

This work did not receive any specific funding.

### Author details

<sup>1</sup>Department of Radiotherapy, Centre Jean Perrin, 63011 Clermont-Ferrand, France. <sup>2</sup>Department of Medical Physics, Centre Jean Perrin, 63011 Clermont-Ferrand, France. <sup>3</sup>Clermont Auvergne University, EA7283 CREaT, 63011 Clermont-Ferrand, France.

Received: 23 February 2016 Accepted: 9 April 2016

Published online: 18 April 2016

### References

- Soldà F, Wharram B, De Ieso PB, Bonner J, Ashley S, Brada M. Long-term efficacy of fractionated radiotherapy for benign meningiomas. *Radiation Oncol.* 2013;109:330–4.
- Jian BJ, Kaur G, Sayegh ET, Bloch O, Parsa AT, Barani JJ. Fractionated radiation therapy for vestibular schwannoma. *J Clin Neurosci.* 2014;21:1083–8.
- Colin P, Jovenin N, Delemer B, Caron J, Grulet H, Hecart A-C, Lukas C, Bazin A, Bernard M-H, Scherpereel B, Peruzzi P, Nakib I, Redon C, Rousseaux P. Treatment of pituitary adenomas by fractionated stereotactic radiotherapy: a prospective study of 110 patients. *Int J Radiat Oncol Biol Phys.* 2005;62:333–41.
- Berens ME, Rutka JT, Rosenblum ML. Brain tumor epidemiology, growth, and invasion. *Neurosurg Clin N Am.* 1990;1:1–18.
- Whittle IR, Smith C, Navoo P, Collie D. Meningiomas. *Lancet.* 2004;363:1535–43.
- Hilton DA, Hanemann CO. Schwannomas and their pathogenesis. *Brain Pathol.* 2014;24:205–20.
- Asa SL, Ezzat S. The pathogenesis of pituitary tumours. *Nat Rev Cancer.* 2002;2:836–49.
- Kondziolka D, Lunsford LD, McLaughlin MR, Flickinger JC. Long-term outcomes after radiosurgery for acoustic neuromas. *N Engl J Med.* 1998;339:1426–33.
- Gevaert T, Verellen D, Engels B, Depuydt T, Heuninckx K, Tournel K, Duchateau M, Reynders T, De Ridder M. Clinical evaluation of a robotic 6° of freedom treatment couch for frameless radiosurgery. *Int J Radiat Oncol Biol Phys.* 2012;83:467–74.
- Gevaert T, Verellen D, Tournel K, Linthout N, Bral S, Engels B, Collen C, Depuydt T, Duchateau M, Reynders T, Storme G, De Ridder M. Setup accuracy of the Novalis ExacTrac 6DOF system for frameless radiosurgery. *Int J Radiat Oncol Biol Phys.* 2012;82:1627–35.
- Jin J-Y, Yin F-F, Tenn SE, Medin PM, Solberg TD. Use of the BrainLAB ExacTrac X-Ray 6D system in image-guided radiotherapy. *Med Dosim.* 2008;33:124–34.
- Wurm RE, Erbel S, Schwenkert I, Gum F, Aagaolu D, Schild R, Schlenger L, Scheffler D, Brock M, Budach V. Novalis frameless image-guided noninvasive radiosurgery: initial experience. *Neurosurgery.* 2008;62(5 Suppl):A11–17. discussion A17–18.
- Podgorsak EB, Souhami L, Caron JL, Pla M, Clark B, Pla C, Cadman P. A technique for fractionated stereotactic radiotherapy in the treatment of intracranial tumors. *Int J Radiat Oncol Biol Phys.* 1993;27:1225–30.
- Podgorsak EB, Olivier A, Pla M, Lefebvre PY, Hazel J. Dynamic stereotactic radiosurgery. *Int J Radiat Oncol Biol Phys.* 1988;14:115–26.
- Szumacher E, Schwartz ML, Tsao M, Jaywant S, Franssen E, Wong CS, Ramaseshan R, Lightstone AW, Michaels H, Hayter C, Laperriere NJ. Fractionated stereotactic radiotherapy for the treatment of vestibular schwannomas: combined experience of the Toronto-Sunnybrook regional cancer centre and the princess margaret hospital. *Int J Radiat Oncol Biol Phys.* 2002;53:987–91.
- Solberg TD, Boedeker KL, Fogg R, Selch MT, DeSalles AA. Dynamic arc radiosurgery field shaping: a comparison with static field conformal and noncoplanar circular arcs. *Int J Radiat Oncol Biol Phys.* 2001;49:1481–91.
- Cardinale RM, Benedict SH, Wu Q, Zwicker RD, Gaballa HE, Mohan R. A comparison of three stereotactic radiotherapy techniques; ARCS vs. noncoplanar fixed fields vs. intensity modulation. *Int J Radiat Oncol Biol Phys.* 1998;42:431–6.
- Gevaert T, Verellen D, Tournel K, Linthout N, Bral S, Engels B et al. Setup accuracy of the novalis exactrac 6DOF system for frameless radiosurgery. *Int J Radiat Oncol Biol Phys.* 2011; 27: 1627–1635.
- Gondi V, Tolakanahalli R, Mehta MP, Tewatia D, Rowley H, Kuo JS, Khuntia D, Tomé WA. Hippocampal-sparing whole-brain radiotherapy: a “How-to” technique using helical tomotherapy and linear accelerator-based intensity-modulated radiotherapy. *Int J Radiat Oncol Biol Phys.* 2010;78:1244–52.
- Gondi V, Hermann BP, Mehta MP, Tomé WA. Hippocampal dosimetry predicts neurocognitive function impairment after fractionated stereotactic radiotherapy for benign or low-grade adult brain tumors. *Int J Radiat Oncol Biol Phys.* 2013;85:348–54.
- McKenzie A, van Herk M, Mijnheer B. Margins for geometric uncertainty around organs at risk in radiotherapy. *Radiation Oncol.* 2002;62:299–307.
- Emami B, Lyman J, Brown A, Cola L, Goitein M, Munzenrider JE, Shank B, Solin LJ, Wesson M. Tolerance of normal tissue to therapeutic irradiation. *Int J Radiat Oncol Biol Phys.* 1991;21:109–22.
- Gondi V, Pugh SL, Tome WA, Caine C, Corn B, Kanner A, Rowley H, Kundapur V, DeNittis A, Greenspoon JN, Konski AA, Bauman GS, Shah S, Shi W, Wendland M, Kachnic L, Mehta MP. Preservation of memory with conformal avoidance of the hippocampal neural stem-cell compartment during whole-brain radiotherapy for brain metastases (RTOG 0933): a phase II multi-institutional trial. *J Clin Oncol.* 2014;32:3810–6.



24. Bragg CM, Wingate K, Conway J. Clinical implications of the anisotropic analytical algorithm for IMRT treatment planning and verification. *Radiother Oncol.* 2008;86:276–84.
25. Prescribing, Recording, and Reporting Photon-Beam Intensity-Modulated Radiation Therapy (IMRT): Contents. *J ICRU* 2010, 10:NP.
26. Ling CC, Zhang P, Archambault Y, Bocanek J, Tang G, LoSasso T. Commissioning and quality assurance of RapidArc radiotherapy delivery system. *Int J Radiat Oncol Biol Phys.* 2008;72:575–81.
27. Gondi V, Tomé WA, Mehta MP. Why avoid the hippocampus? A comprehensive review. *Radiother Oncol.* 2010;97:370–6.
28. Feuvret L, Noël G, Mazeron J-J, Bey P. Conformity index: a review. *Int J Radiat Oncol Biol Phys.* 2006;64:333–42.
29. Ding M, Newman F, Kavanagh BD, Stuhr K, Johnson TK, Gaspar LE. Comparative dosimetric study of three-dimensional conformal, dynamic conformal arc, and intensity-modulated radiotherapy for brain tumor treatment using Novalis system. *Int J Radiat Oncol.* 2006;66(4, Supplement):S82–6.
30. Anand AK, Kumar P, Patir R, Vaishya S, Bansal AK, Chaudhoory AR, Punnakal AU, Malhotra H, Munjal RK. Fractionated stereotactic radiosurgery with volumetric modulated arc therapy (Rapid Arc) for reirradiation in recurrent high grade gliomas. *J Cancer Res Ther.* 2014;10:97–102.
31. Wiggeraad RGJ, Petoukhova AL, Versluis L, van Santvoort JPC. Stereotactic radiotherapy of intracranial tumors: a comparison of intensity-modulated radiotherapy and dynamic conformal Arc. *Int J Radiat Oncol Biol Phys.* 2009;74:1018–26.
32. Rauschenbach BM, Mackowiak L, Malhotra HK. A dosimetric comparison of three-dimensional conformal radiotherapy, volumetric-modulated arc therapy, and dynamic conformal arc therapy in the treatment of non-small cell lung cancer using stereotactic body radiotherapy. *J Appl Clin Med Phys.* 2014;15:4898.
33. Dickey M, Roa W, Drodge S, Ghosh S, Murray B, Scrimger R, Gabos Z: A planning comparison of 3-dimensional conformal multiple static field, conformal arc, and volumetric modulated arc therapy for the delivery of stereotactic body radiotherapy for early stage lung cancer. *Med Dosim.* 2015;40:347–51.
34. Ong CL, Verbakel WFAR, Cuijpers JP, Slotman BJ, Lagerwaard FJ, Senan S. Stereotactic radiotherapy for peripheral lung tumors: a comparison of volumetric modulated arc therapy with 3 other delivery techniques. *Radiother Oncol.* 2010;97:437–42.
35. Cambria R, Cattani F, Jereczek-Fossa BA, Pansini F, Ciardo D, Vigorito S, Russo S, Zerini D, Cozzi L, Orecchia R: Planning study to compare dynamic and rapid arc techniques for postprostatectomy radiotherapy of prostate cancer. *Strahlenther Onkol.* 2014;190:569–74.
36. Scoccianti S, Detti B, Gadda D, Greto D, Furfaro I, Meacci F, et al. Organs at risk in the brain and their dose-constraints in adults and in children: a radiation oncologist's guide for delineation in everyday practice. *Radiother Oncol.* 2015;114:230–8.
37. Pan CC, Eisbruch A, Lee JS, Snorrason RM, Ten Haken RK, Kileny PR. Prospective study of inner ear radiation dose and hearing loss in head-and-neck cancer patients. *Int J Radiat Oncol Biol Phys.* 2005;61:1393–402.
38. Bhandare N, Jackson A, Eisbruch A, Pan CC, Flickinger JC, Antonelli P, Mendenhall WM: Radiation therapy and hearing loss. *Int J Radiat Oncol Biol Phys.* 2010;76(3 Suppl):S50–57.
39. Hall EJ. Intensity-modulated radiation therapy, protons, and the risk of second cancers. *Int J Radiat Oncol Biol Phys.* 2006;65:1–7.

Submit your next manuscript to BioMed Central and we will help you at every step:

- We accept pre-submission inquiries
- Our selector tool helps you to find the most relevant journal
- We provide round the clock customer support
- Convenient online submission
- Thorough peer review
- Inclusion in PubMed and all major indexing services
- Maximum visibility for your research

Submit your manuscript at  
[www.biomedcentral.com/submit](http://www.biomedcentral.com/submit)

