



Anthraco-typology as a key approach to past firewood exploitation and woodland management reconstructions. Dendrological reference dataset modelling with dendro-anthracological tools

Alexa Dufraisie, Sylvie Coubray, Olivier Girardclos, Noémie Nocus, Michel Lemoine, Jean-Luc Dupouey, Dominique Marguerie

► To cite this version:

Alexa Dufraisie, Sylvie Coubray, Olivier Girardclos, Noémie Nocus, Michel Lemoine, et al.. Anthraco-typology as a key approach to past firewood exploitation and woodland management reconstructions. Dendrological reference dataset modelling with dendro-anthracological tools. Quaternary International, 2018, 463 (part B), pp.232-249. 10.1016/j.quaint.2017.03.065 . hal-01637751

HAL Id: hal-01637751

<https://hal.science/hal-01637751>

Submitted on 29 Mar 2018

HAL is a multi-disciplinary open access archive for the deposit and dissemination of scientific research documents, whether they are published or not. The documents may come from teaching and research institutions in France or abroad, or from public or private research centers.

L'archive ouverte pluridisciplinaire **HAL**, est destinée au dépôt et à la diffusion de documents scientifiques de niveau recherche, publiés ou non, émanant des établissements d'enseignement et de recherche français ou étrangers, des laboratoires publics ou privés.



Distributed under a Creative Commons Attribution - ShareAlike 4.0 International License

Anthraco-typology as a key approach to past firewood exploitation and woodland management reconstructions. Dendrological reference dataset modelling with dendro-anthracological tools

Alexa Dufraisse^{1*}, Sylvie Coubray^{1,3}, Olivier Girardclos², Noémie Nocus¹, Michel Lemoine¹, Jean-Luc Dupouey⁴, Dominique Marguerie⁵

¹ Sorbonne Universités, CNRS, Muséum national d'Histoire naturelle, UMR 7209, Archéozoologie, Archéobotanique: sociétés, pratiques et environnements, CP56, 55 rue Buffon, 75005 Paris, France

² CNRS, University of Bourgogne-Franche-Comté, UMR 6249, Chrono-Environnement, 16 route de Gray 25030 Besançon cedex

³ INRAP, Centre Île-de-France, 41 rue Delizy 93690 Pantin cedex

⁴ INRA, UMR EEF, Ecologie et Ecophysiologie forestières, 54280 Champenoux

⁵ CNRS, UMR 6553 ECOBIO, University of Rennes 1, Beaulieu, 35042 Rennes cedex

* Corresponding author: alexa.dufraisse@mnhn.fr

Abstract

Charcoal analysis aims to study different aspects of forest management, technological choices and their specific impact on past landscapes, as well as the impact of climatic events. However, at the present time, charcoal analysis is generally limited to the study of a list of taxa and their relative frequency, as the methods usually employed in dendrochronology to characterize past woodland, based on long tree-ring series, are not suitable for anthracological material. Today, the new challenge for charcoal analysis is thus to develop adapted dendrological tools. In this context, the aim of the ANR DENDRAC project “*Development of dendrometrical tools applied to anthracology: study of the interactions between Man, resources and environments*” was to characterize modern-day wood stands in accordance with historical woodland practices and convert dendroecological

data into parameters adapted to charcoal analysis. The purpose of this study is to define the dendrological features with the help of the anthracological tools without explaining the observed differences between the sampled stands (given the stational variability, age and regeneration modes). The first step consisted in creating dendro-anthracological tools based on morpho-anatomical criteria that help to characterize growth, distinguish heartwood from sapwood and evaluate charcoal-pith distance. The second step involves characterizing three modern-day wood stands (coppice under standard, high forest and young stand formed by a mixture of seeded and coppice trees), defined by their structure, stand density and regeneration modes, using dendrological data measured on fresh wood material and modelled into anthracological data with the dendro-anthracological tools. In this way, anthracological types were defined for each wood stand, forming anthraco-typological models, which are useful for the interpretation of archaeological charcoal assemblages. Finally, an anthracological key is proposed to sort archaeological charcoal fragments in anthraco-groups before data processing.

Keywords : firewood management; dendro-anthracological tools; anthraco-typology; anthraco-group; deciduous oak

1. Introduction

1.1. Anthracology and past woodland reconstruction

The questions raised by relationships between people and the environment in time and space can be explored by archaeological, ethnographic or environmental approaches. The management of the environment for (plant or animal) food strategies reflects, to some extent, human societies and their organization, their lifestyles, their perception of the environment and the landscape in which they operate.

Forest exploitation in order to produce wood material for multiple needs, is perceptible at different scales: the tree, the woodland and the landscape (Michon, 2005, 2015); Humans

"domesticate" the tree by modifying its architecture, its growth cycle, its production and its reproductive functions. This domestication also concerns the forest ecosystem transformed by practices. Wood stands are shaped by and for societies living in them as a result of the installation of fields, herds and villages in forest areas. Variable spatial patterns results from this articulation between forest and agriculture, the landscapes.

Firewood management contributes to this "domestication". It is part of a complex system closely related to social organization, technical and economic systems, and the environment itself (Chabal, 1997; Picornell Gelabert, 2011; Dufraisse, 2012; Salavert and Dufraisse, 2014). Thus, archaeological charcoal fragments, residues of firewood selected and transported by humans, are valuable ecofacts reflecting use, techniques and woodland management, and are themselves conditioned by environmental resources (available wood resources, i.e. biodiversity and biomass).

In forest science, the criteria characterizing wood stands are the composition (dominant and secondary species), stand density (number of stems per hectare), structure (distribution of age and diameter classes of trees) and modes of regeneration (seeded or vegetative renewal) (Rondeux, 1999). The methods usually employed in dendrochronology to extract this information are not suited to anthracological material. In dendrochronology, samples usually come from timber wood and generally from trunks and/or branches or roots, the wood is not charred, the methods are based on statistical tools that require at least 50 consecutive rings and it is possible to individualize the signals (study of distinct elements). In anthracology, fragments derive from trunks and/or branches or roots, the wood is charred, fragmented and incomplete as it is partially reduced to ashes, the fragments present on average less than five rings and result from the exploitation of many indistinguishable individuals (Dufraisse, 2006; Marguerie, 2011). Consequently, in the absence of adequate tools, charcoal analysis is most often limited to the study of a list of taxa and their relative frequency without exploiting the information contained in the wood anatomy. The identification of the morphological characteristics of harvested firewood (part of the tree, age,

shape, etc.) still raises methodological problems even though it is a fundamental element for characterizing firewood exploitation techniques and reconstructing the populational and environmental parameters of wood stands.

In order to address this need to learn more about forest exploitation and practices, the ANR DENDRAC project "*Development of dendrometrical tools used in anthracology: study of the interactions between Man, resources and environments*" aims to convert dendroecological data measured on fresh wood material from modern-day oak wood stands - corresponding to different types of historical woodland practices - into parameters adapted to charcoal analysis, using a method similar to that developed by A. Billamboz, termed dendrotypology (Billamboz, 2011, 2014). His method consists in establishing a typological classification of tree-ring series according to their growth patterns. The application of a similar method in anthracology involves associating the identification of the taxa with the examination of dendrological and anatomical parameters; a concept that leads to the notion of dendro-anthracology (Marguerie et al., 2010). Deciduous European oak (*Quercus petraea/robur*) was chosen for its abundance in temperate forests, its anatomy with clearly identifiable growth rings and its representativity in anthracological spectra.

In the present study, we postulate that the characteristics of an assemblage of tree-rings can be exploited, without taking into account tree-ring series in terms of time series like in dendrochronology. The first step consisted in developing dendro-anthracological tools based on morpho-anatomical features. The second step was to convert dendroecological data to form an anthraco-typological grid, which could then be used as a key approach for the interpretation of archaeological charcoal assemblages. This approach was applied to three modern-day wood stands: a coppice under standard, a high forest and a young stand formed by a mixture of seeded and coppice trees. Analysis was conducted at different levels: the whole tree, and trunks and branches separately, in order to model different modes of wood exploitation.

1.2. The dendro-anthracological tools

Growth rate is a widely used dendro-anthracological parameter, but the successive tree-rings width series of each charcoal fragment must be localized as precisely as possible on the stem cross-section. In that aim, different dendro-anthracological tools are proposed in order i) to distinguish sapwood from heartwood which provides information about the minimal age of the wood (heartwood formation i.e. duraminisation starts when deciduous oak is around 25 years old) ii) to localize the tree-ring series in respect to the center of the stem, iii) to model dendroecological data from modern wood stands into dendro-anthracological parameters adapted to charcoal analysis.

1.2.1. The Heartwood-Sapwood discriminating tool

In some species the coloration of heartwood due to the deposition of lignins and polyphenols makes heartwood recognizable, but the charcoalification process that occurs during carbonization obliterates the colour difference, making this feature unusable in anthracology. Fortunately, in some *Angiospermae*, such as deciduous European oak (*Quercus petraea/robur*), the formation of tyloses (cellulose walls expansions) in earlywood vessels is an important feature of the changeover of sapwood to heartwood. However, tylosis formation also occurs in sapwood and increases with the formation of heartwood, from 0% of tyloses in the cambial region and close to 100% in the heartwood. Thus, we quantify the number of vessels sealed by tylosis in order to establish discriminating thresholds between sapwood and heartwood (Fig.1a) (Dufraisse et al., 2016). Trunks and branches of ten deciduous oak trees from 15 to 60 years old were sampled in three stations in order to evaluate the number of earlywood vessels with tylosis in sapwood and heartwood. For an application to archaeological charcoal (tyloses are preserved until 800°C), at least one tree ring and 15 vessels must be counted. The best strategy is to count 50 vessels spread over 3-4 tree rings. Thresholds of less than 65% for sapwood and up to 85% for heartwood are

significant. Besides the discrimination of sapwood and heartwood, the process of heartwood formation starts when deciduous oak is about 25 years old. The absence of heartwood is thus an indication of the exploitation of young wood (trunks or branches).

2.2. The pith estimation tool

The pith estimation tool is used to measure the distance between the charcoal fragment and the center of the stem (or the missing pith), named the “charcoal-pith distance”. This measurement is taken with the trigonometric pith estimation tool based on measurements of the angle and the distance between two ligneous rays (Fig.1b) (Dufraisie and Garcia Martinez, 2011; Paradis-Grenouillet et al., 2013). This tool was evaluated on fresh and carbonized oak wood discs with different angle values and distances between ligneous rays. This work enables us i) to propose exclusive criteria (angle $< 2^\circ$ and distance < 2 mm) for reducing the margin of error and improving results in archaeological applications, ii) to establish correction factors linked to the trigonometric tool itself (underestimation of distance values between 5 and 10 cm) and the shrinkage which occurs during charcoalification, iii) to highlight that there are no reliable measurements for charcoal-pith distances beyond 12.5 cm, i.e. diameter of 25 cm (Dufraisie and Garcia Martinez, 2011; Garcia Martinez and Dufraisie, 2012).

The values were ordered into diameter classes chosen to be compatible with standards used in dendrometrical plans by foresters (Gaudin, 1996; Deleuze et al., 2014). For *Angiospermae* the conventional wood cuts are 4 cm, 7 cm, 20 cm, etc. Two cuts were added at 2 and 10 cm for more accurate interpretation of charcoal diameters, that is to say]0-2] cm,]2-4] cm,]4-7] cm,]7-10] cm,]10-20] and >20 cm. For *Gymnospermae* it is more appropriate to add a cut at 14 cm, namely]0-2] cm,]2-4] cm,]4-7] cm,]7-10] cm,]10-14] cm,]14-20] cm and >20 cm.

2.3. The analysis diameter tool (ADmodel)

Burnt wood undergoes both mass loss and charcoal fragmentation. Consequently, the distribution of the charcoal-pith distances does not indicate unburnt wood diameter. Therefore, an Analysis Diameter model (ADmodel) was developed, based on the fact that a trunk is biologically considered to be a stack of cones (Fig. 1c) (Dufraisse, 2002; 2006; Dufraisse and Garcia Martinez, 2011). These cones are hollow and their thickness corresponds to the amplitude of the diameter classes. It is based on a calculation table that provides the respective distribution of these cones in terms of volume. The ADmodel breaks down unburnt wood diameter into an expected distribution of charcoal-pith distances. In return, the ADmodel is a helpful tool to interpret the distribution of charcoal-pith distances from a charcoal assemblage as unburnt wood diameter (UWD). However, this model does not reconstruct the initially quantity of burnt wood (Théry-Parisot et al., 2011). In the present study, only the ADmodel running into UWD decomposition is used. In the present study, each cone thickness was also characterized by a growth rate (cumulated tree-ring width divided by the number of tree rings) and its sapwood/heartwood affiliation.

2. Material and Method

The general analytical protocol consists in sampling modern-day oak woodlands corresponding to specific archaeological questions, removing logs from felled trees, cutting wood discs from logs and producing experimental charcoal assemblages (Fig. 2). Various kinds of datasets were produced: i) dendrometrical plans to characterize tree morphology and wood stands (composition, structure stand density, regeneration modes), ii) dendrochronological data from wood discs, iii) anthracological data modelled with the dendro-anthracological tools.

2.1. Sampled stands

With respect to historical woodland practices and to answer to specific archaeological issues such as the distinction branch/ trunk or coppice /high forest three “contrasted” deciduous oak stands managed by the National Forestry Office (ONF) in France were chosen (Fig. 3). The first one is “ Les Cagouillères “, located in the Vienne department, on a limestone plateau (altitude: 115m). It is in an old abandoned coppice woodland, about 62 years old, currently undergoing conversion to high forest. The second stand is “Bogny-sur-Meuse” located in the Ardennes department. This is a coppice-under-standard growing on an acidic brown soil on schists, about 68 years old. The third stand is “Le Bois de l’Or”, also located in the Ardennes department, near Bogny-sur-Meuse. This is a young stand, about 15 years old, formed by a mixture of even aged seeded and coppice trees (altitude: 350m).

2.2. Stand analysis

In order to characterize the wood stands, forest inventory and dendrometric data were compiled. The basal area increment (m^2/ha), stand density (number of stems per hectare), dominant height of the trees and the average square diameter were recorded distinguishing trees with diameters of more and less than 7.5 cm (table 1, Fig. 4).

2.3. Dendrometry and tree ring analysis

The dendrological information for each tree, such as diameter, age, growth rate and radial growth trend, was defined at breast height on the field and from disc located at 1.30 m above ground, as is usual in dendroecology. However, the nature and representativeness of archaeological samples are different in dendroecology and anthracology. Consequently, for

the conversion in anthracological data according to anthracological constraints, the dendrological data were measured in the whole tree.

For the study of tree ring-climate relations in sessile oak, six is the number of optimal trees to sample. For our purpose, and taking into account our archaeological questions, one to five trees were felled and registered meter by meter, one dominant tree in the coppice-under-standard at “Bogny-sur-Meuse”, four dominant stems from distinct multi-stem trees at “Les Cagouillères” and five coppice shoots and five seeded trees at “Le Bois de l’Or”.

For each tree, the total height, the height of the first large branch insertion on the stem and the height of the crown base were recorded as well as the diameter at breast height and regeneration modes. The set of tree morphology indicators is presented in table 1 and figure 4.

In order to estimate the relative proportion of trunk and branches for each tree and each stand, each tree was cut into logs of 1-metre-long including branches with a diameter of more than 4 cm. A code was attributed to each log according to its position in the tree (height, number of branches, location in the branch). Length and circumference (at three points) of each log were measured to calculate the mean diameter and the volume. Branches with a diameter of less than 4 cm were packed into bundles according to two diameter classes; 0-2 cm and 2-4 cm. Each bundle was weighed. Sub-samples of wood were collected from each bundle to estimate the density of the wood and then to calculate the volume of each bundle.

In order to characterize each tree and then each wood stand at different levels (whole tree, and trunks and branches separately), one disc was removed from the extremity of each log. In the present study, a subsample of the set of discs was taken by selecting discs at different heights in the trunk and in the crown (23 discs for the four trees at “Les

Cagouillères”, 14 discs for the tree at “Bogny-sur-Meuse” and 77 discs for the 10 trees at “Le Bois de l’Or” (Table 2a, 2b).

The tree-ring widths (discriminating earlywood and latewood) of each disc were measured to the nearest 0.01 mm using a LINTAB measurement device and associated TSAP software (Frank Rinn, Heidelberg, Germany) along 5 radii and averaged in order to reduce intra-tree variability.

Each tree-ring was then associated with a diameter class (calculated by the cumulated ring widths) and sapwood/heartwood. Thus, the proportion of sapwood and heartwood was characterized by averaging tree-ring numbers, tree-ring width and wood volume.

The usual dendro-anthracological parameters were first independently considered to obtain a “whole tree” estimation, and then the trunks and branches were separated. i) the distribution of growth-ring width, ii) the proportion of sapwood/heartwood, iii) the distribution of the decomposed unburnt wood diameters (UWD) were recorded.

3. Results

3.1. Dendrological features of the three wood stands (Fig. 4).

For the four sampled 62 years-old trees from “Les Cagouillères”, the average diameter at breast height is 20.75 cm. The average tree height is 17.7 m and 90,4% of the wood volume is from to the trunk. The low proportion of branches, with a diameter of less than 7 cm, reflects an undeveloped crown (probably due to competition, a consequence of the abandonment of forest management). The dominant tree at “Bogny-sur-Meuse” is 68 years old with a diameter of 33 cm at breast height. The height is 20.3 m with a first large branch at 7.7 m and a more developed crown; branches represent 37.4% of the tree volume and can reach a diameter of 20 cm. The trees at “Le Bois de l’Or” are 14 years old, their diameters average 10.21 cm, 8.6 m high, the trunk forms 78.38% of the volume and the diameter of branches less than 7 cm in diameter. Thus, the tree at “Bogny-sur-Meuse” is less

slender than trees at “Les Cagouillères” and “Le Bois de l’Or” (see the height/diameter ratio, table 1).

In the three sampled stands, trunk volume is always predominant and branches are poorly represented. The diameter 20-40 cm class is the best represented at “Bogny-sur-Meuse” whereas the 10-20 cm diameter class characterizes “Les Cagouillères”. The main volume at “Le Bois de l’Or” is distributed between 7-10 diameter but a few trees reach 11 cm and thus belong to the 10-20 cm diameter class.

Radial growth rate and growth trends are different in each stand. Tree-ring widths average 1.23 mm/year at “Les Cagouillères” coppice, and the growth trend has been decreasing over the past 20 years due to strong competition between shoots, intra-tree and between stools. At “Bogny-sur-Meuse”, growth-ring widths average 1.35 mm/year and the growth trend has been decreasing slightly over the past 20 years. At “Le Bois de l’Or”, growth-ring widths average 2.99 mm/year and are marked during the 1 to 10 first years by a steady increase in the coppice trees while seeded trees are characterized by narrowest rings than coppice from around the pith to 6-7 years, followed by an intensive growth period before a relatively sudden decrease (for more details, see Girardclos et al., 2016).

3.2. Simple dendro-anthracological parameters

3.2.1. Growth rate

The distribution of the growth rates indicates differences at stand and tree levels (Fig. 5a). First, the difference in growth rate observed in § 3.1 and only based on one disc localized at 1.30 m in the trunk, is conserved when the whole tree is taken into account, what is more realistic for anthracology. The growth rate at “Les Bois de l’Or” is the highest, followed by “Bogny-sur-Meuse” and “Les Cagouillères”. For a same stand, we also note a significant difference between trunks and branches, the latter being characterized by a lower rate. Moreover, considering the different parts of the trunk (base, top, upper part in the crown), we note that the annual ring-width in the top of the bole is wider than in the lower

part, and that the growth rate of the trunk localized in the crown is comparable with branches (Fig. 5b). However, this latter observation is less clear at “Le Bois de l’Or”.

3.2.2. Sapwood/heartwood

The trees at “Le bois de l’Or”, less than 15 years old, are characterized by the absence of heartwood, contrasting with “Bogny-sur-Meuse” and “Les Cagouillères” (Fig. 6). However, at “Les Cagouillères”, heartwood formation is not yet initiated in branches. Conversely, the trunk and branches of the dominant tree at « Bogny-sur-Meuse » are characterized by heartwood and sapwood. The relative proportion of sapwood in trunk is less important at “Bogny-sur-Meuse” than at “Les Cagouillères”. Likewise, the average number of sapwood tree-rings is less important at “Bogny-sur-Meuse”. Nevertheless the average sapwood ring width is higher at “Bogny-sur-Meuse” reflecting more vigorous growth.

3.2.3. Diameters

The unburnt wood diameters (UWD) were decomposed with the ADmodel, according to the relative volume of each hollow cone composing the logs (Fig. 1c, 7).

The raw dendrological data indicate that there is little overlap between the diameters of branches and trunks. In fact, the low proportion of the trunk represented in the smallest diameter classes corresponds to the upper part of the trunk localized in the crown. Therefore, for each wood stand, the distribution of the decomposed UWD of branches is clearly distinct from the trunk. Besides, as the volume of branches is weak, the wood diameter pattern for whole trees does not show clear differences with that of the trunk.

3.3. Combination of dendro-anthracological parameters

3.3.1. Decomposed UWD *versus* tree-ring width

The first combination consisted in assessing growth trends by characterizing each wood stand. In dendroecology, growth trends are obtained by combining tree-ring width and cambial age. Given that i) the analysis of tree-ring patterns in segment of cambial age is considered relevant for studying forest dynamics and development (Haneca et al., 2005) ii) the distance of the charcoal from the pith can be estimated by the charcoal-pith tool, we combined tree-ring width with diameter classes. For the dendrological data, average tree-ring width was calculated for each cambial age. For the modelled anthracological data, average tree-ring width was calculated for each diameter class (Fig. 8).

The radial growth trends of the three wood stands are different and the modelled anthracological data correspond well to their dendrological characteristics. Even though the anthracological data are smoother because of the calculation of average ring width per diameter class, the radial growth trend is consisting of i) a strong increase in the radial growth of trees at “Le Bois de l’Or”, reflecting a free juvenile growth, ii) the increase followed by a decrease at “Les Cagouillères” due to the high density of trees over a long period of time, iii) a slight decrease in the life of the tree at “Bogny-sur-Meuse” due to a managed coppice-under-standards. However, the differences observed between seeded and coppice trees at “Le Bois de l’Or” are no longer evident.

The branches at “Les Cagouillères” and “Bogny-sur-Meuse” are characterized by a lower growth rate than in the corresponding trunks (cf. § 3.2.1.) and by a downward growth. In contrast, the young seeded and coppice trunks at “Le Bois de l’Or”, with diameters comparable to the branches, are characterized by a clearly higher growth rate and a more upward growth.

The radial growth rate of whole trees is lower in the first diameter classes than in the trunk considered separately, as it includes the low growth rates of branches. Then, radial growth increases from the boundary of the step between diameters of trunks and branches.

3.3.2. Diameter classes *versus* heartwood/sapwood

The second combination aims to improve the interpretation of the distribution of the decomposed UWD by associating them with the presence or absence of heartwood, and the sapwood/heartwood ratio in each diameter class, as decomposed by the ADmodel (Fig. 9).

The distribution of heartwood/sapwood according to the diameter classes shows specific patterns for the different wood stands and possible exploitation modes (whole trees, trunks/branches separately).

At “Les Cagouillères”, where branches are characterized by the absence of heartwood, the volume of the trunk is mainly distributed in the penultimate diameter class. The pattern of the whole trees is similar to that of the trunk, as branches only represent 9.58% of the volume. At “Bogny-sur-Meuse”, the same pattern is observable but the main volume is represented in the last two diameter classes. However, regarding the whole tree, sapwood is better represented in the small diameter classes than at “Les Cagouillères”, as branches account for 37.4% of the tree volume.

While the mature trees contain a central heartwood core (reflected by heartwood in the small diameter classes) and peripheral sapwood (reflected by sapwood in the largest diameter classes), the absence of heartwood in trunks from “Le Bois de l’Or” and in branches from “Les Cagouillères” is in agreement with young trunks and young branches respectively (less than 25 years old for oak). They are characterized by small diameters with sapwood, and the absence of heartwood and of large diameters. The biggest branches of the tree from “Bogny-sur-Meuse”, i.e. 10-20 cm, contain small amounts of heartwood, and traces of heartwood in the smaller classes.

3.3.3. Tree-ring width *versus* diameter classes *versus* sapwood/heartwood

The third combination consists in combining tree-ring width with the decomposed UWD and their respective affiliation to sapwood or heartwood (Fig. 10).

Globally, the pattern between whole trees and trunks from a same stand is similar. This is less obvious at “Bogny-sur-Meuse” where no disc from the upper part of the trunk without heartwood has yet been studied. However, we can expect the same pattern, characterized by sapwood and heartwood in all the diameter classes, and a lower average tree-ring width in sapwood corresponding to the external rings, which is coherent with the growth dynamic of trees (Fritts, 1976).

The exploitation of branches only is clearly distinct, with a low growth rate and the absence of heartwood in the case of young branches, as at “Les Cagouillères”. If branches are a little older as at “Bogny-sur-Meuse”, heartwood is absent in the largest classes of diameter. Lastly, the young vigorous seeded and coppice trees are characterized by a high growth rate in sapwood, while heartwood is absent.

4. Discussion and application to charcoal assemblages

The dendrological characteristics of each wood stand, discriminating branches, trunks and whole trees, were defined with the help of the dendro-anthracological tools. The dendro-anthracological parameters (growth rate, heartwood/sapwood, diameters) were recorded independently of each other and then combined, forming anthraco-types (Fig. 11).

First of all, annual ring width was considered individually. Considering the whole tree and the trunk, ring width distribution is significantly different among stands. However, the distribution between seeded and coppice trees at “Le Bois de l’Or” is not significantly different. Likewise, the distribution between branches at “Les Cagouillères” and “Bogny-sur-Meuse” is not different. In each stand, branches are characterized by a lower growth rate than in the trunk. This observation is in agreement with the study of the variation of annual tree-ring width along the stem marked by a slight increase from the base to the top of the

trunk and a strong decreasing in the upper part of the trunk (in the crown). These results are similar to those of Dhôte et al. (1997), based on 82 *Quercus petraea* distributed in five regions in France. Consequently, growth conditions are mainly recorded in the trunk and branches should be avoided for palaeo-environmental reconstruction. This result fits with the method of D. Marguerie and J.-Y. Hunot (2007) whose the principle is to keep only tree-ring width measurements based on charcoal with large charcoal-pith distance.

At the scale of a charcoal assemblage, these data can be obtained by measuring each tree ring of each charcoal fragment and averaging them (per fragment). However, their interpretation remains problematic at this stage as they may come from different wood stands, trunks and/or branches, and it is not possible to distinguish them. In addition, it is difficult to interpret growth rate without contemporary, diachronic or modern-day reference standards.

The presence or the absence of heartwood and the proportion of sapwood/heartwood are good indicators of the maturity of the wood. In anthracology, sapwood and heartwood can be distinguished using the proportion of vessels sealed by tylosis (Dufraisse et al., 2016). Then each fragment can be affiliated to sapwood or heartwood. However, if although the absence of heartwood reflects the exploitation of young trees, it is difficult to interpret sapwood and heartwood proportions as external and internal sapwood are not differentiated.

Unburnt wood diameter (UWD) was decomposed using ADmodel. In a charcoal assemblage, charcoal diameters are obtained by measuring the charcoal-pith distance. The results indicate a diameter limit between branches and trunks for each wood stand, with almost no overlap, which is in agreement with the literature (Deleuze et al., 2014). However, the exploitation of whole trees is difficult to distinguish from the exploitation of trunks on account of the low branch volume. Consequently, if we hypothesize the exploitation of whole trees, the proportion of branches will be inconspicuous and difficult to distinguish from the exploitation of trunks. In addition, as regards the exploitation of different wood stands, it is

problematic to differentiate branches and young trunks solely on the basis of diameter distribution.

Thus, growth rate, heartwood/sapwood and wood diameters are three parameters that can be applied to charcoal assemblages. However, their use independently of each other is somewhat limited and sometimes difficult to interpret despite their information potential.

A first combination consisted in associating heartwood/sapwood and diameter parameters in order i) to differentiate the two kinds of sapwood: external sapwood in mature woods, and internal sapwood (absence of heartwood) in young woods ii) to improve the interpretation of the distribution of the decomposed UWD. Specific patterns were recorded according to wood stands and the exploitation modes (whole trees, trunks/branches separately). Young woods (trunk or branches) are characterized by absence of heartwood and small diameter classes, whereas mature wood is characterized by heartwood in small diameter classes and sapwood in the largest ones. In the scope of application to charcoal assemblages, this first combination yields four groups of charcoal fragments depending on their position in the wood: i) small diameter associated with sapwood corresponding to young woods, ii) small diameter associated with heartwood corresponding to the internal part of mature woods, iii) large diameter associated with heartwood corresponding to the middle part of mature woods and iv) large diameter associated with sapwood corresponding to the external part of mature woods.

The association of growth rates with the sapwood/heartwood ratio can provide information about the vigour of wood stands and tree morphology. For example, the proportion of sapwood is higher in trunks from “Les Cagouillères” (high forest) than in the trunk of the dominant tree at “Bogny-sur-Meuse” (coppice-under-standard). However, average sapwood ring-width and sapwood width are higher at “Bogny-sur-Meuse” than in “Les Cagouillères” (Fig. 7). This observation shows that i) for a same age (Bogny: 68 years

old, Cagouillères: 62 years old), the most vigorous trees have a more extensive sapwood surface (Lebourgeois, 1999) ii) sapwood width is higher in coppice-under-standard than in high forest (Dhôte et al., 1997). Thus, the under-representation of sapwood in the trunk of the tree in “Bogny-sur-Meuse” is probably due to a larger tree diameter, 33 cm as opposed to 20.75 cm.

The third combination consists in associating tree-ring width and diameters (distribution of the decomposed unburnt wood diameters). For an application to charcoal assemblage, each tree ring is associated with a charcoal-pith distance, then to a diameter class and finally an average tree-ring width is calculated for each diameter class. Radial growth trends appear to be preserved keeping with dendrological radial growth. An original pattern marked by a low growth rate along the smallest diameter classes followed by a higher rate in the largest diameter classes may be a characteristic of the exploitation of whole trees. However, as it is often the case in dendroecology, one pattern may correspond to several scenarios. Here for example, a partial clearing of the wood stand could lead to a comparable growth trend. Thus interpretations have to be associated with the results established by other disciplines. In addition, an initial distinction between young trunks (coppice) and young branches becomes possible as their growth rate and growth trend differ (high rate and upward trend for coppice, low rate and downward trend for branches). However, no further distinction is visible between coppice and seeded trees at “Le Bois de l’Or”. In fact, only the proportion of earlywood is only significant when radius is up to 1,6 cm (Girardclos et al., 2016).

The last combination is the association of all the dendro-anthracological parameters: heartwood/sapwood, tree-ring width and diameters. Besides the distinction between young and mature woods based on the association between heartwood/sapwood and diameters, it becomes possible to discriminate branches from trunks among young woods. Indeed, branches are characterized by sapwood, a low growth rate and rather downward growth,

whereas young trunks (coppice and seeded trees) are characterized by sapwood, a high growth rate and rather upward growth.

Specific patterns appear depending on the stand and the potential types of wood exploitation (trunks and/or branches). Thus, anthracological types could be defined forming an interpretative grid which can act as a useful key for the interpretation of archaeological charcoal assemblages. Moreover, the recorded dendrological information is not the same depending on the position in the tree. For example, the information recorded in tree-ring width depends on the position of the charcoal fragment; tree-ring width and growth trend in young woods may be a good indicator of the origin of the wood in the tree (crown or bole) whereas stand characteristics (stand density according to strong or low competition between trees) are more perceptible in trunk, i.e. large diameter of mature wood (Marguerie and Hunot, 2007).

These results entail a new approach to anthracological material. Charcoal fragments have to be sorted according to their position in the stem cross-section and in the tree. For that purpose, an anthracological key based on dendro-anthracological parameters and forming anthraco-groups is proposed (Fig. 12).

Each oak fragment is characterized by a charcoal-pith distance, sapwood/heartwood affiliation and annual tree-ring width. The first division at the threshold of a diameter of 7 cm is often used by foresters and corresponds to the diameter limit between branches and trunks in deciduous oak forest. Concerning tree-ring width, charcoal fragments with regular and irregular tree-ring width series are taken into account separately. For example in northern France, according to V. Bernard (1998, p. 96), narrow rings are less than 0.7 mm/year and large rings are between 0.7 and 3 mm/year for deciduous oak. Very large rings, up to 3 mm, can be also considered (i.e. 12 groups).

The use of this anthracological key enables us to sort charcoal fragments according to their position in the tree. Then, measurements of each batch can be processed separately.

526
527 To close, it is important to make several remarks concerning the dendro-
528 anthracological tools and their applications.

- 529 i) The application of dendro-anthracological tools requires a minimum
530 transversal plane size of about 4 mm x 4 mm and at least one whole growth-
531 ring. The optimal number of fragments to analyze is around 100 per sampling
532 unit (structure, layer, etc. according to the problematic).
- 533 ii) The choice of the diameter classes, chosen to be compatible with standards
534 used in dendrometrical plans by foresters, seems to be relevant. However, a
535 charcoal fragment can be classified in a class or the other when the value of
536 the charcoal-pith distance is close to a limit but usually the interpretation is not
537 affected.
- 538 iii) Given that it exists a boundary between the diameters of trunks and branches
539 within a wood stand and that the part of the trunk located in the crown
540 presents the same dendrological characteristics as a branch, it is more
541 relevant and accurate for charcoal analysis to distinguish bole from crown
542 than trunk from branch when considering oak and probably more generally
543 *Angiospermea*. However, by *Gymnospermea*, the trunk can be easily followed
544 until the apex with a clear separation of the branch material. Thus this
545 distinction bole/crown or trunk/branch has to be adapted according to the
546 architecture of the tree. In addition, variations in growth rates are often
547 considered and interpreted in terms of environmental (light, soil or climate)
548 and human factors (clearings or woodland management). However, we have
549 to keep in mind that they can also result from a change in exploitation
550 techniques (whole trees, trunks, branches). The use of the anthracological key
551 may allow for the classification of the growth-ring width signal and thus bring
552 more accurate information.

- iv) Shrinkage during charcoalification leads to lower tree-ring width. This process is not consistent, depending on sapwood/heartwood and charcoal-pith distance. A preliminary study on shrinkage offers promising results in order to propose correction factors (Garcia Martinez and Dufraisse, 2012).
- v) The relative frequency of the different taxa in charcoal assemblages is representative of the used biomass (wood volume). In the same way, the use of the dendro-anthracological parameters is based on the assumption that charcoal fragments represent the different parts of trees proportionally to their volume, with their dendrological characteristics (growth, ratio sapwood/heartwood, diameter). That is why the ADmodel is based on wood volume (and not on the number of fragments). However, we stress that, this model cannot reconstruct the quantity of initially burnt wood.
- vi) As for the interpretation of tree-ring width (Marguerie, 1992, p. 72; Marguerie and Hunot, 2007), several conditions are required to interpret the dendro-anthracological parameters: charcoal assemblages must come from numerous trees, tree-ring series are randomly distributed in the transversal sections of charcoal fragments, ring series must be numerous enough and with a homogeneous width, acquisitions areas are subjected to the same climatic influences and the geological substratum must be homogeneous.

5. Conclusion

In line with the work of D. Marguerie (Marguerie, 1992, Marguerie and Hunot, 2007, Marguerie, 2011, Marguerie et al., 2010), combining charcoal identification and dendrological examination, the aim of this study was to improve methods to assess whether it was pertinent to develop quantitative measurements, such as estimating pith-charcoal distance, and whether the combination of dendro-anthracological parameters provides new information on wood exploitation and forest management.

Besides the measurement of tree-ring width, the present study is based on the development of three anthracological tools consisting in i) measuring charcoal-pith distance, ii) discriminating heartwood/sapwood and iii) modelling dendrological data to make them compatible with charcoal analysis. Three dendro-anthracological parameters i.e. growth ring width, charcoal-pith distances and heartwood/sapwood, modelled with ADmodel, were tested on modern-day oak wood stands chosen with respect to historical woodland practices: a coppice-under-standard, an old coppice undergoing conversion to high forest and a young stand formed by a mixture of seeded and coppice trees. For a more realistic representation of dendrological data according to anthracological constraints, different levels of analysis were considered: the whole tree, and trunks and branches separately, allowing us to further consider various modes of wood exploitation.

The dendro-anthracological parameters taken into account independently of each other provide interesting results but rather limited interpretation, especially for tree-ring width or sapwood/heartwood. Indeed the dendrological information cannot be interpreted in the same way depending on its position in the tree. For example, growth conditions and thus paleo-environmental information are essentially recorded in the trunk. In contrast, the combination of the dendro-anthracological parameters highlights specific patterns between organs, stands and regeneration modes, and enables us to establish an anthraco-typology forming an interpretative grid. A major result here is the identification of the position of the charcoal fragment belonging to young woods or internal/middle/external parts of mature woods and the distinction between branches and young trunks when associated with the tree-ring width. These results lead to the establishment of an anthracological key aiming to sort charcoal fragments into anthraco-groups according to their position in the tree and their growth rate.

Finally, these results offer new opportunities for the interpretation of archaeological charcoal assemblages as well as the development of new dendro-anthracological tools adapted to species other than deciduous oak.

Acknowledgment

The authors thank the Agence Nationale de la Recherche (ANR JCJC 200101 DENDRAC, dir. A. Dufraisie) for financing this study and Louise Byrne for English correction. They are also grateful to two anonymous reviewers for their valuable remarks and suggestions which helped to improve this publication.

Captions

Table 1 Dendrological characteristics of each wood stand and sampled trees.

Table 2a Analyzed wood discs and dendrological characteristics: Bogny-sur-Meuse; Les Cagouillères

Table 2b Analyzed wood discs and dendrological characteristics: Bois de l'Or.

Fig. 1. Dendro-anthracological tools.

Fig. 2. General analytical protocol developed in the ANR DENDRAC program. Experimental charcoal assemblages are not considered in this paper.

Fig. 3. Location of sampled stands.

Fig. 4. Main dendrological characteristics of the wood stands: modes of regeneration, average age, average diameter at breast height, relative proportion of trunks and branches (expressed according to volume), distribution of the diameters of trunks and branches (each log and its volume was attributed to an unburnt wood diameter class), average growth rate and growth trends (tree-ring width measurements were taken on each disc at a height of 1.30 m, along 5 radii and averaged).

Fig. 5. Annual ring-width was averaged from 5 radii in each disc. (a) Distribution of annual ring-width (maximum and minimum values, 1st and 3rd quartiles and median) considering whole trees (white), trunks (brown) and branches (green). (b) Distribution of the annual ring-width along the trunks and in branches.

Fig. 6. Relative proportion of heartwood (brown) and sapwood (yellow) for each stand, considering whole trees, trunks and branches. The volume proportion of sapwood and heartwood was estimated for each disc, then each log and tree, and averaged for each wood stand. The average number of sapwood tree-rings, average sapwood width (cm) and average sapwood growth rate (mm/year) are indicated in boxes when heartwood is present.

Fig. 7. Diameter distribution (each log with its volume was attributed to a diameter class). At the top, the raw dendrological data (UWD = Unburnt Wood diameter) with trunks in brown and branches in green (branch = 100% and trunk = 100%). At the bottom, the decomposed UWD for the whole trees, trunks and branches for each stand.

Fig. 8. Dendrological data (simple line): average tree-ring width calculated by cambial age. Modelled anthracological data (solid line): average tree-ring width calculated for each diameter class.

Fig. 9 Cumulated curves of sapwood and heartwood proportions according to the decomposed UWD.

Fig. 10. Average tree-ring width according to the diameter classes (decomposed UWD) and their respective affiliation to sapwood (yellow) or heartwood (brown).

Fig. 11. Anthraco-typology for deciduous oak: an interpretative grid for archaeological charcoal assemblages.

Fig. 12. Anthracological key for deciduous oak to sort archaeological charcoal fragments into anthraco-groups. First, charcoal fragments are separated according to the charcoal-pith distances, more or less than 3.5 cm (i.e. diameter of 7 cm). Next, the charcoal fragment is attributed to heartwood or sapwood according to the proportion of vessels sealed by tylosis. Lastly, each fragment is characterized by annual tree-ring width.

References

Bernard, V., 1998. L'Homme, le bois et la forêt dans la France du Nord entre le Mésolithique et le Haut Moyen-Âge. BAR International Series, 733, Oxford.

Billamboz, A., 2011. Applying dendro-typology to large timber series. In Fraiture P. (Ed), Tree Rings, Art, Archaeology Proceedings of an international Conference. Brussels, pp. 177-188.

Billamboz, A., 2014. Regional patterns of settlement and woodland developments: Dendroarchaeology in the Neolithic pile dwellings on Lake Constance (Germany). The Holocene 24 (10), 1278–1287.

Deleuze, C., Monreau, F., Renaud, J.P., Vivien, Y., Rivoire, M., Santenoise, Ph., Longuetaud, F., Mothe, F., Hervé, J.C., Vallet, P., 2014. Estimer le volume total d'un arbre, quelles que soient l'essence, la taille, la sylviculture, la station. RDV Techniques 44, ONF, pp. 22-32.

689 Dhôte, J.F., Hatsch, E., Rittié, D., 1997. Profil de la tige et géométrie de l'aubier chez le
690 Chêne sessile (*Quercus petraea* Liebl.). Bulletin Technique de l'ONF 33, 59-82.

691

692 Dufraisse, A., Coubray, S., Girardclos, O., Dupin, A., Lemoine, M., 2016. Contribution of
693 tyloses quantification in early wood oak vessels to archaeological charcoal analyses:
694 estimation of a minimum age and influences of physiological and environmental factors.
695 Quaternary International (under review).

696

697 Dufraisse, A., Garcia Martinez, M.S., 2011. Mesurer les diamètres du bois de feu en
698 anthracologie. Outils dendrométriques et interprétation des données. *Anthropobotanica* (2),
699 1-18.

700

701 Dufraisse, A., 2012. Firewood and woodland management in their social, economic and
702 ecological dimensions. New perspectives. In Badal E., Carrion Y., Grau E., Macías M.,
703 Ntinou M. (Eds), *Wood and charcoal: evidence for human and natural history*. *Saguntum*
704 extra 13, 65-74.

705

706 Dufraisse, A., 2006. Charcoal anatomy potential, wood diameter and radial growth. In:
707 Dufraisse, A. (Ed.), *Charcoal analysis: New Analytical Tools and Methods for Archaeology*,
708 *BAR International Series*, 1483, pp. 47-59.

709

710 Dufraisse, A., 2002 *Les Habitats littoraux néolithiques des lacs de Chalain et Clairvaux (Jura,*
711 *France): collecte du bois de feu, gestion de l'espace forestier et impact sur le couvert*
712 *arboréen entre 3700 et 2500 av. J.-C. Analyses anthracologiques, thèse de doctorat, univ.*
713 *De franche-Comté*, 349 p.

714

715 Fritts, H. C., 1976. Tree Rings and Climate. Academic Press, New York, New York.

716

717 Garcia Martinez, M.S., Dufraisie, A., 2012. Correction factors on archaeological wood
718 diameter estimation. In Badal E., Carrion Y., Grau E., Macías M., Ntinou M. (Eds), Wood and
719 charcoal: evidence for human and natural history. Saguntum extra 13, 283-290.

720

721 Gaudin, S., 1996. Dendrométrie des peuplements. BTSA Gestion Forestière, Besançon.

722

723 Girardclos, O, Dufraisie, A., Dupouey, J.L., Coubray, S., Hamdidi, B., Ruelle, J., Rathgeber,
724 C., 2016. Improving identification of coppiced and seeded trees in past woodland
725 management by comparing growth and wood anatomy of living sessile oaks (*Quercus*
726 *petraea*). Quaternary International (under review).

727

728 Haneca, K., Van Acker, J., Beeckman, H., 2005. Growth trends reveal the forest structure
729 during Roman and Medieval times in Western Europe: a comparison between archaeological
730 and actual oak ring series (*Quercus robur* and *Quercus petraea*). Annals of Forest Science
731 62 (8), 797- 805.

732

733 Lebourgeois, F., 1999. Les chênes sessile et pédonculé (*Quercus petraea* Liebl. et *Quercus*
734 *robur* L.) dans le réseau RENECOFOR : rythme de croissance radiale, anatomie du bois, de
735 l'aubier et de l'écorce. Revue Forestière Française 51 (4), 522-536.

736

737 Marguerie, D., 2011. Short Tree ring series: the study materials of the dendro-anthracologist.
738 In Badal E., Carrion Y., Grau E., Macías M., Ntinou M. (Eds), Ve International Meeting of

739 charcoal analysis. The charcoal as cultural and biological heritage. *Saguntum extra* 11, 15-
740 16.

741

742 Marguerie, D., Bernard, V., Begin, Y., Terral, J.-F., 2010. Dendroanthracologie. In Payette S.,
743 Filion L. (Dir.), *Dendroécologie : principes, méthodes et applications/Dendroecology :
744 principes, methods and applications*. Presses Universitaires Laval, Québec, Canada, 311-
745 347.

746

747 Marguerie, D. Hunot, J.-Y., 2007. Charcoal analysis and dendrology: data from
748 archaeological sites in western France. *Journal of Archaeological Sciences*, 34 (9), 1417-
749 1433.

750

751 Marguerie, D., 1992. *Evolution de la végétation sous l'impact humain en Armorique du
752 Néolithique aux périodes historiques*. Trav. Labo. Anthropologie, Université de Rennes I,
753 n°40, 313 p.

754

755 Michon, G., 2005. Domesticating forests. How farmers manage forest resources. IRD-
756 CIFOR-ICRAF, Paris-Jakarta-Bogor.

757

758 Michon, G., 2015. *Agriculteurs à l'ombre des forêts du monde. Agroforesteries vernaculaires*.
759 Actes Sud/IRD, Arles.

760

761 Paradis-Grenouillet, S., Dufraisse, A., Allee, P., 2013. Radius of curvature measurements
762 and wood diameter: a comparison of different image analysis techniques. In F. Damblon

763 (Ed.), 4th International Meeting of Anthracology in Brussels. BAR International Series 2486,
 764 173-182.

765

766 Picornell Gelabert, Ll., 2011. People, trees and charcoal: some reflections about the use of
 767 ethnoarchaeology in archaeological charcoal analysis. In Badal E., Carrion Y., Grau E.,
 768 Macías M., Ntinou M. (Eds), Ve International Meeting of charcoal analysis. The charcoal as
 769 cultural and biological heritage. *Saguntum extra* 11, 185-186.

770

771 Rondeux, J, 1999. La mesure des arbres et des peuplements forestiers. Les presses
 772 agronomiques de Gembloux, Gembloux.

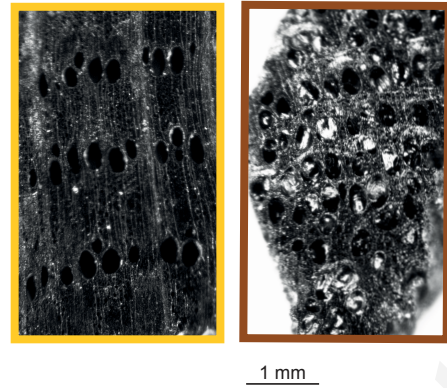
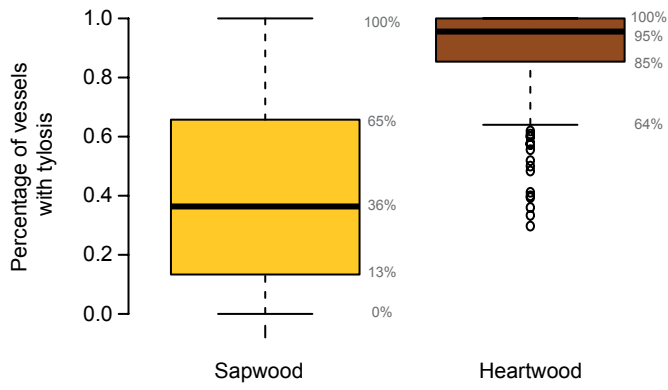
773

774 Salavert, A., Dufraisse, A. 2014. Understanding the impact of socio-economic activities on
 775 archaeological charcoal assemblages in temperate areas: comparative analysis of firewood
 776 management of two Neolithic societies of Western Europe (Belgium, France). *Journal of*
 777 *Anthropological Archaeology* 35, 153-163.

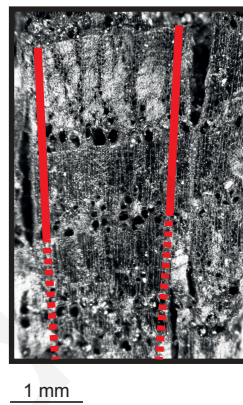
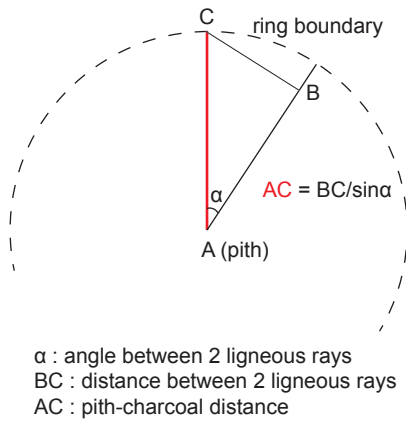
778

779 Théry-Parisot I., Dufraisse A., Chazvaz J., Henry A., Paradis-Grenouillet S. 2011.
 780 Charcoal analysis and wood diameter: inductive and deductive methodological approaches
 781 for the study of firewood collecting practices. In Badal E., Carrion Y., Grau E., Macías M.,
 782 Ntinou M. (Eds), Ve International Meeting of charcoal analysis. The charcoal as cultural and
 783 biological heritage. *Saguntum extra* 11, 31-32.

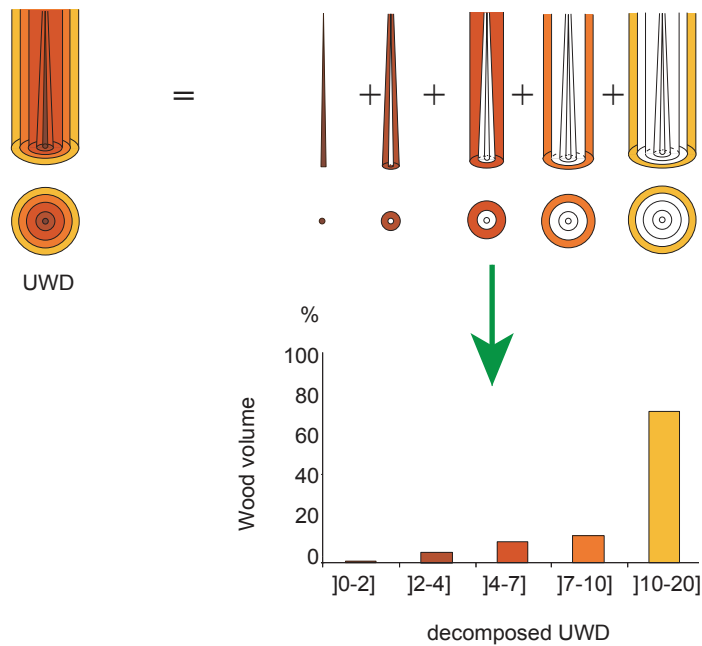
a- Heartwood-Sapwood discriminating tool

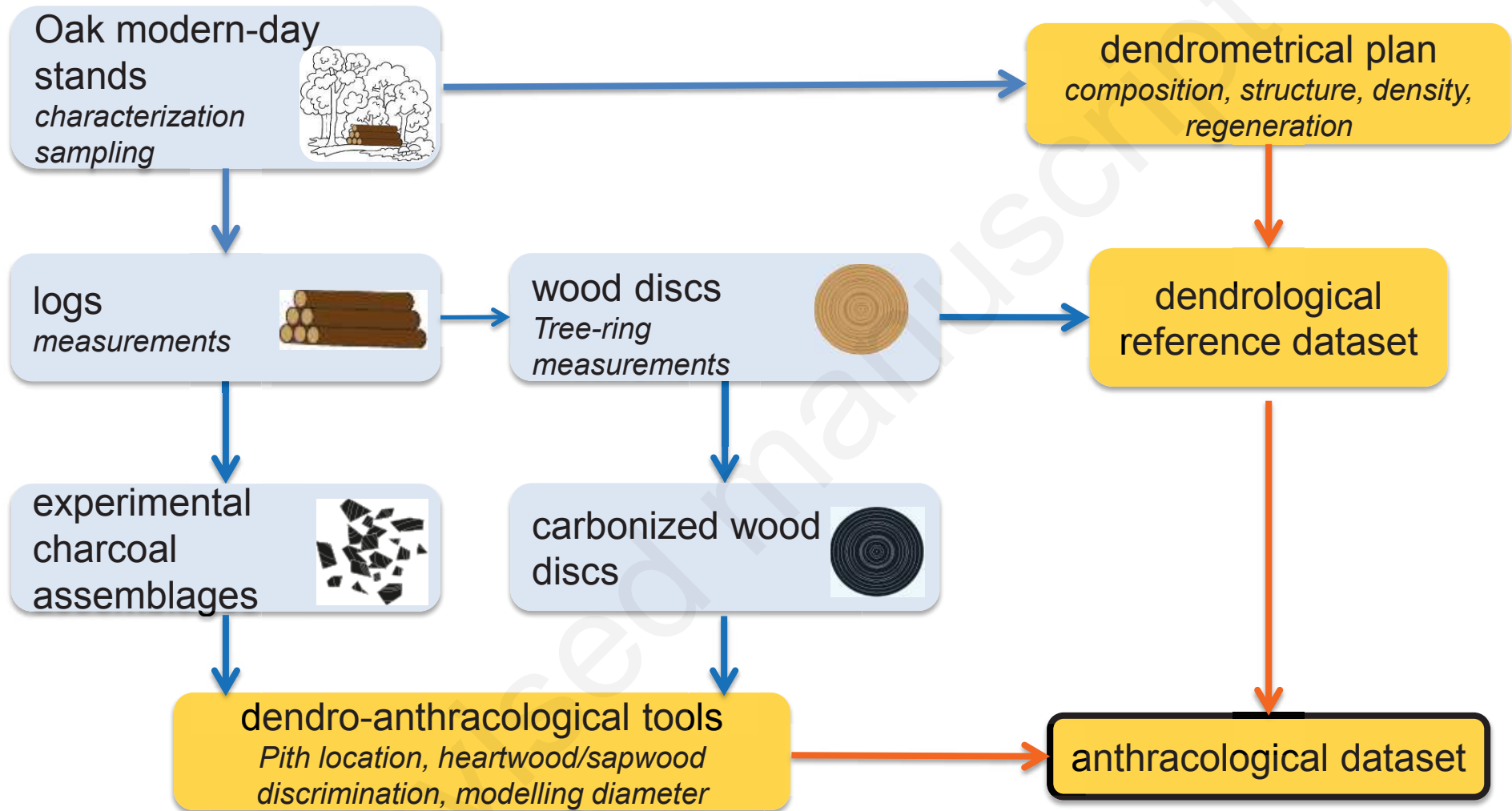


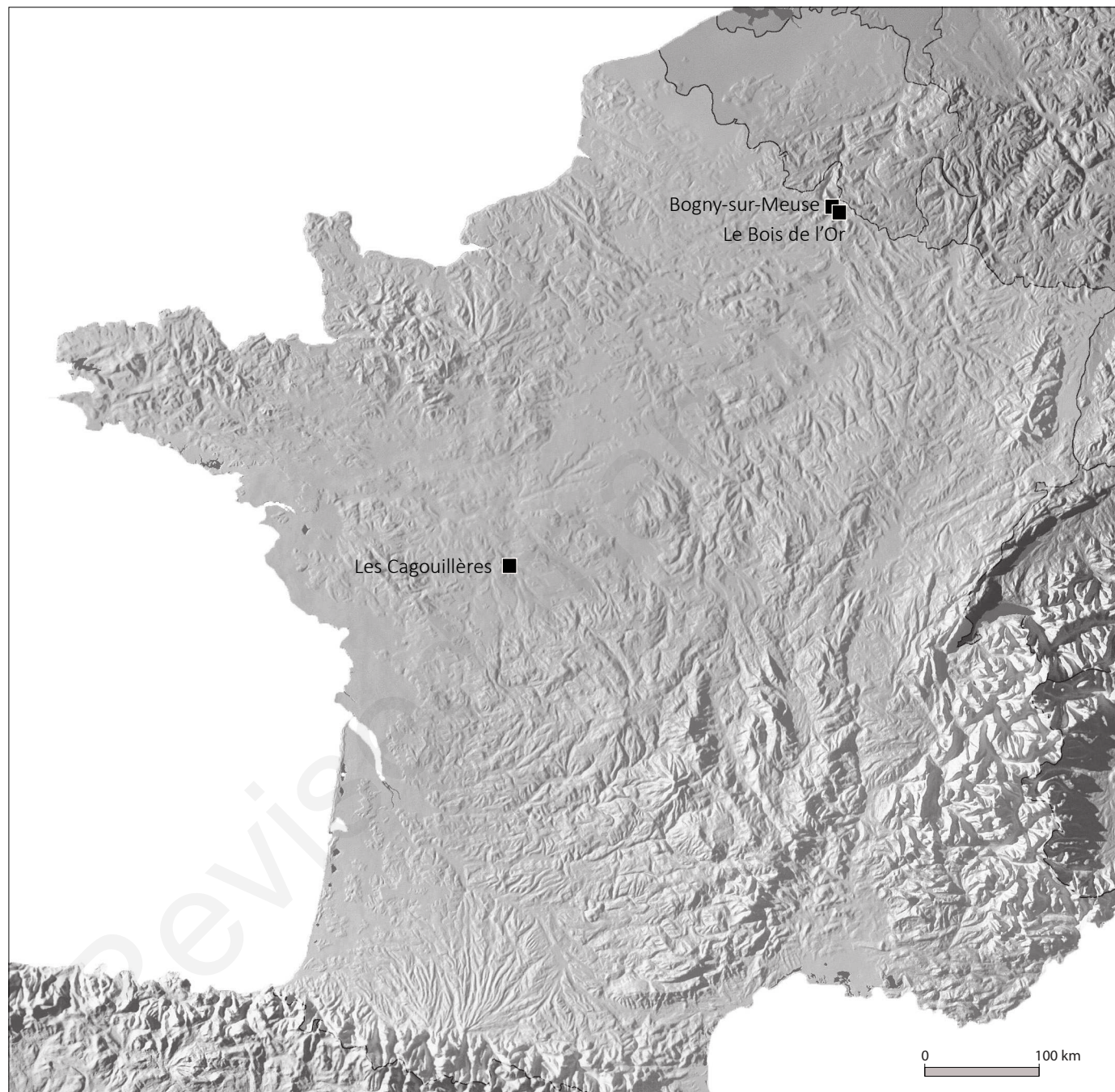
b- Pith estimation tool



c- Analysis Diameter tool







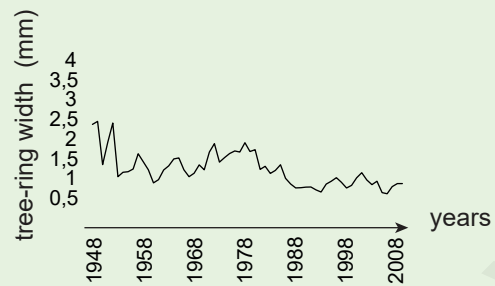
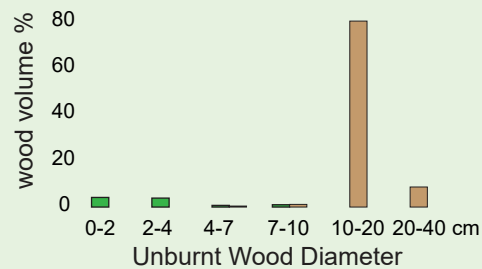
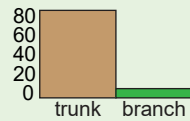
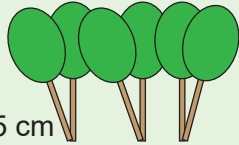
Les Cagouillères

Abandoned old coppice
4 trees

Average age = 62 yr

Average diameter = 20.75 cm

Average tree-ring width = 1.23 mm



Bogny-sur-Meuse

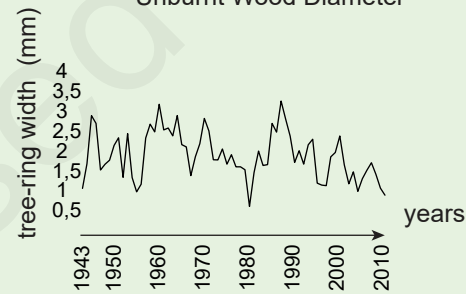
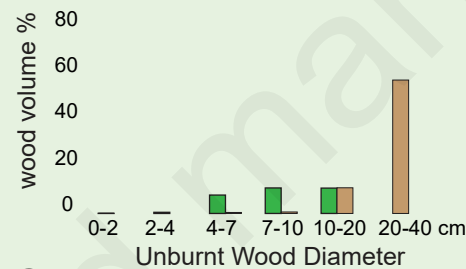
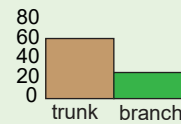
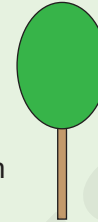
Dominant standard

1 tree

Age = 68 yr

Diameter = 33 cm

Average tree-ring width = 1.35 mm



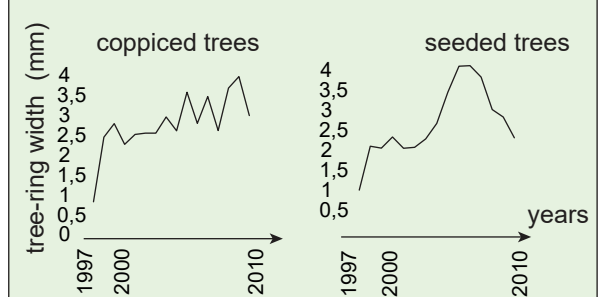
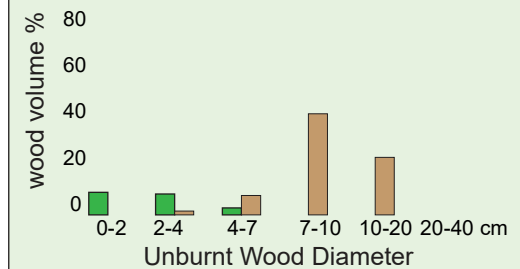
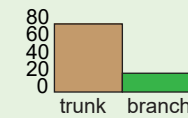
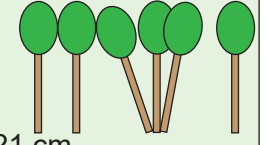
Bois de l'Or

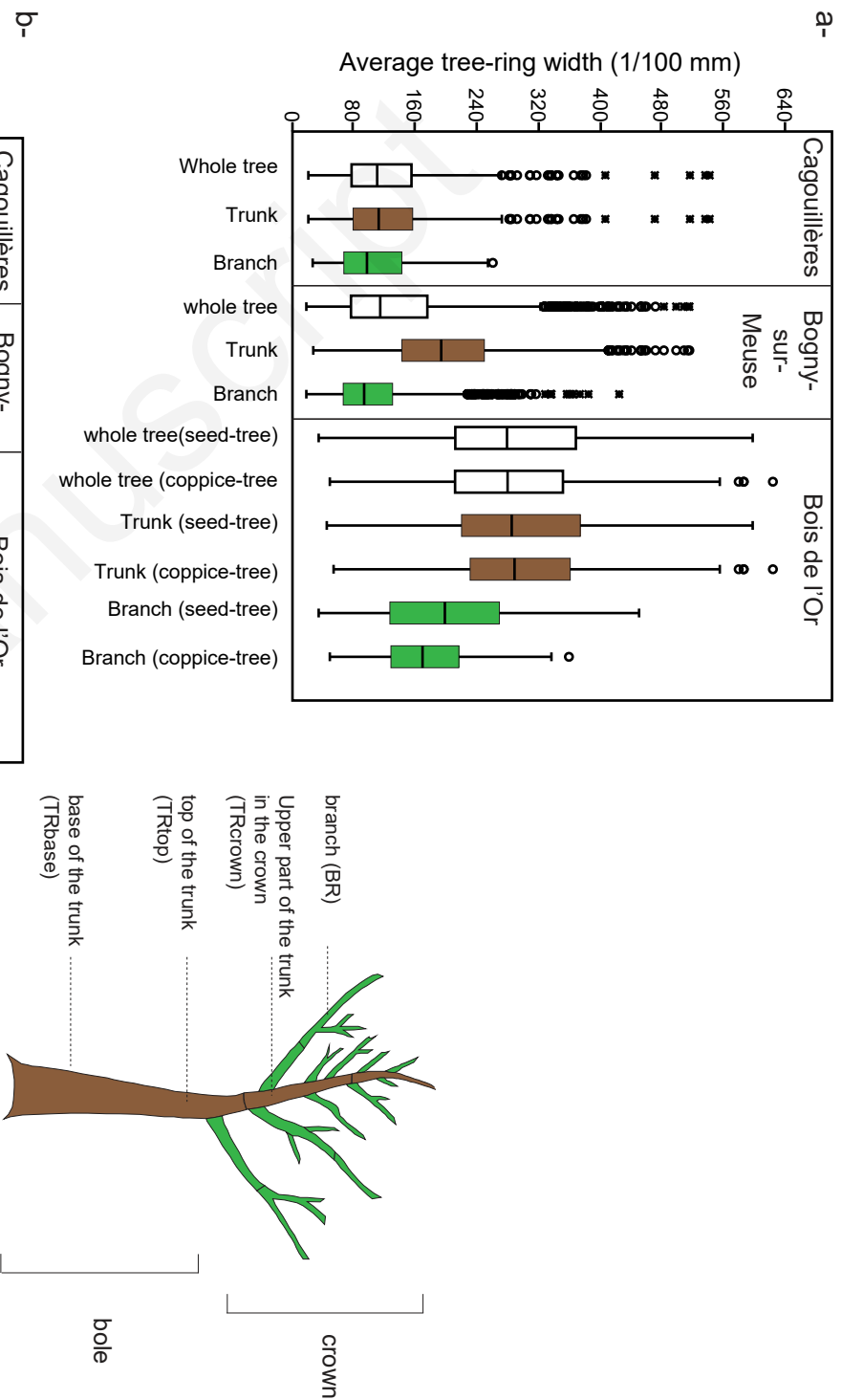
Mixture of seeded and
coppiced trees

Average age = 14 yr

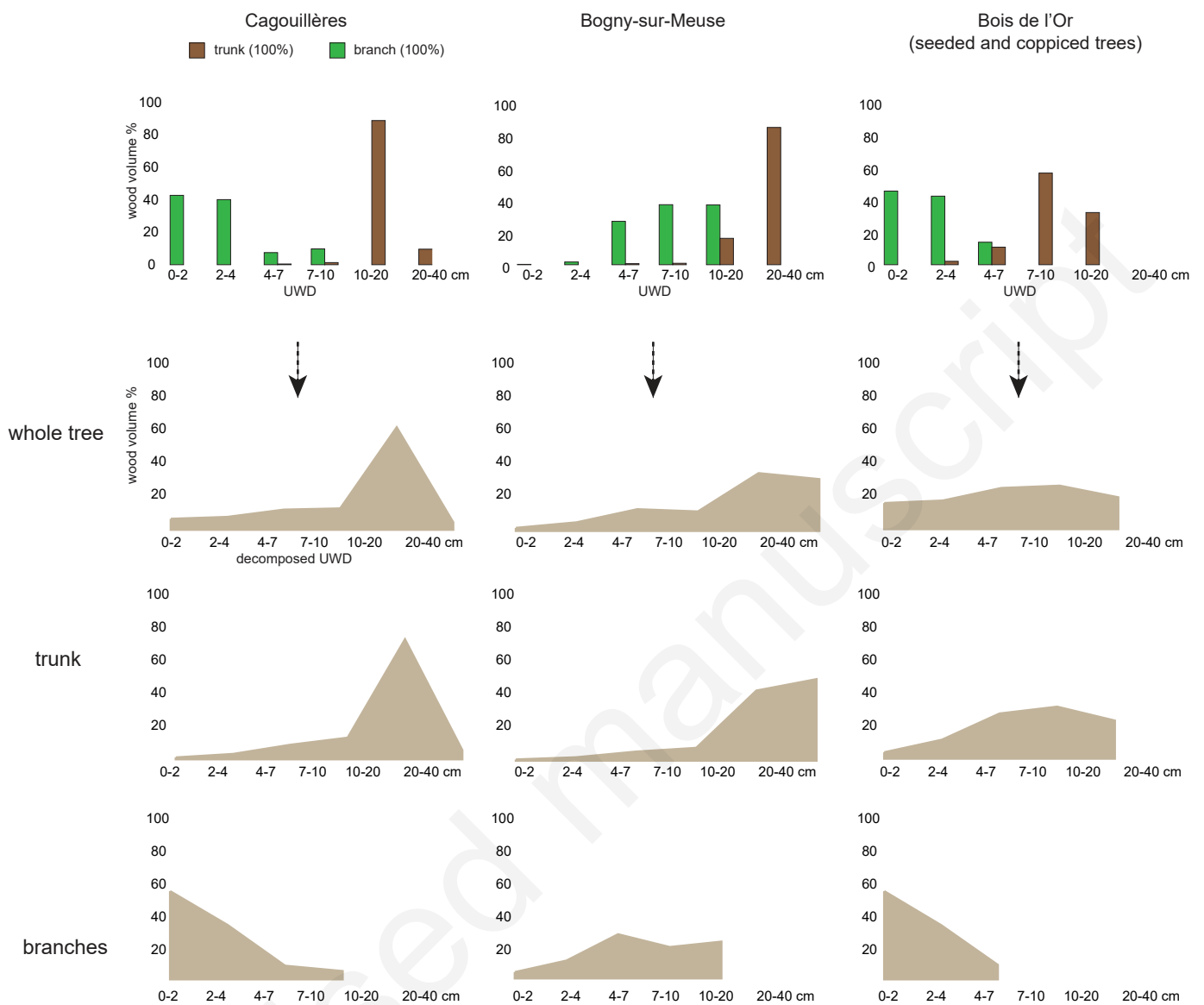
Average diameter = 10.21 cm

Average tree-ring width = 2.99 mm

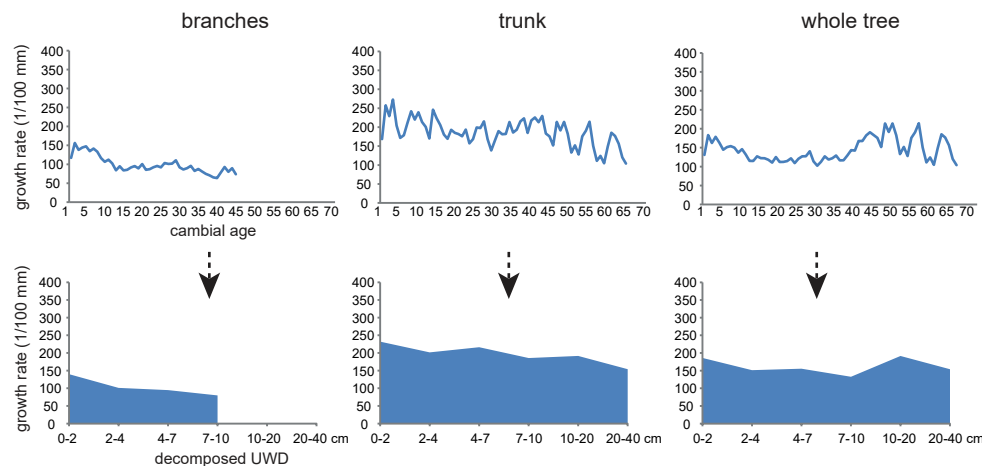




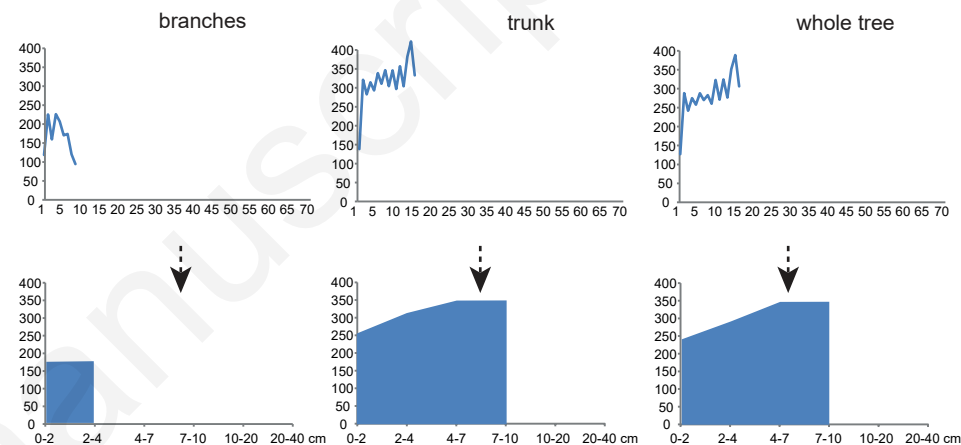




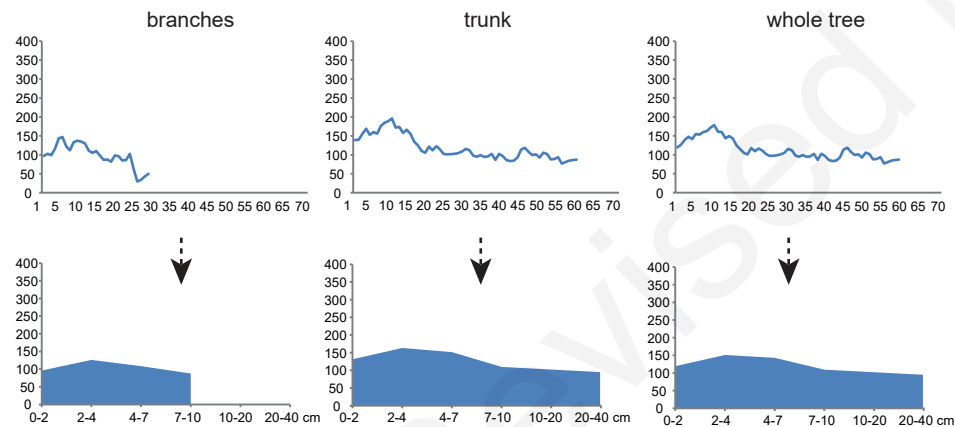
Bogny-sur-Meuse



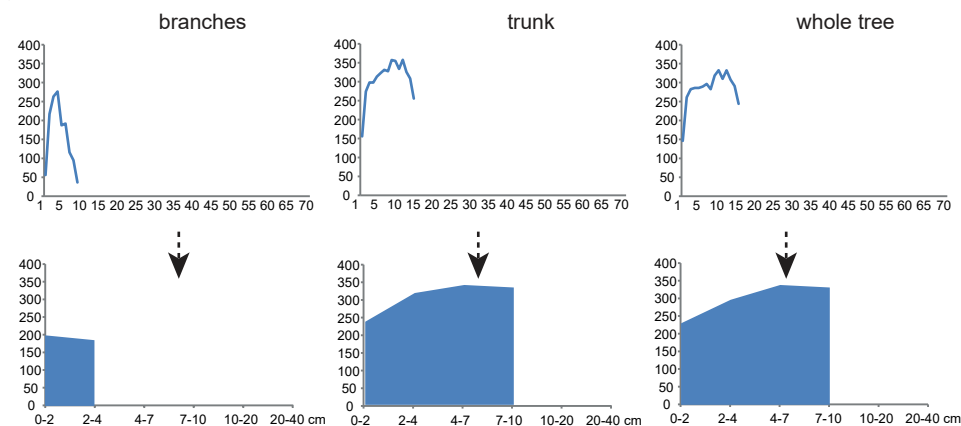
Bois de l'or - coppiced trees



Cagouillères



Bois de l'or - seeded trees

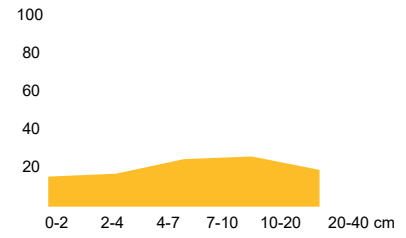
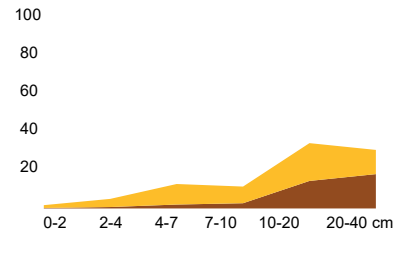
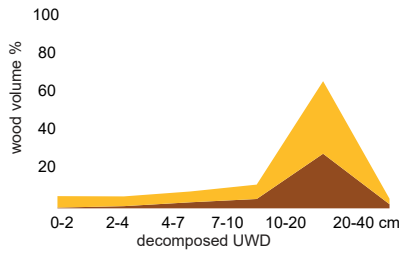


Cagouillères

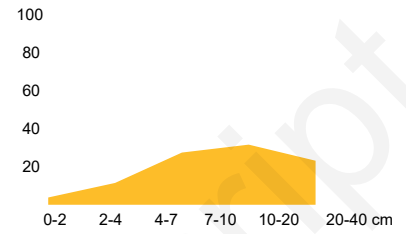
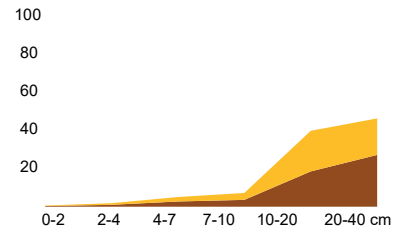
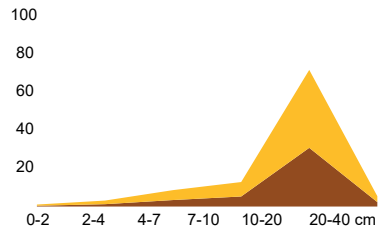
Bogny-sur-Meuse

Bois de l'Or
(seeded and coppiced trees)

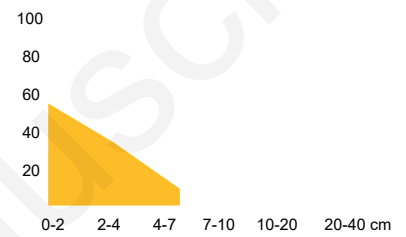
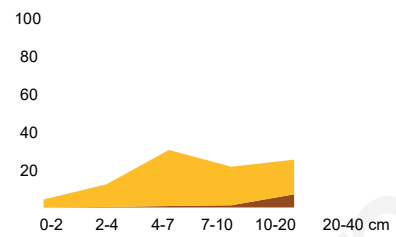
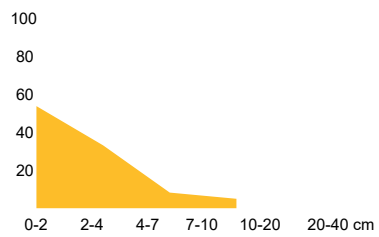
whole tree



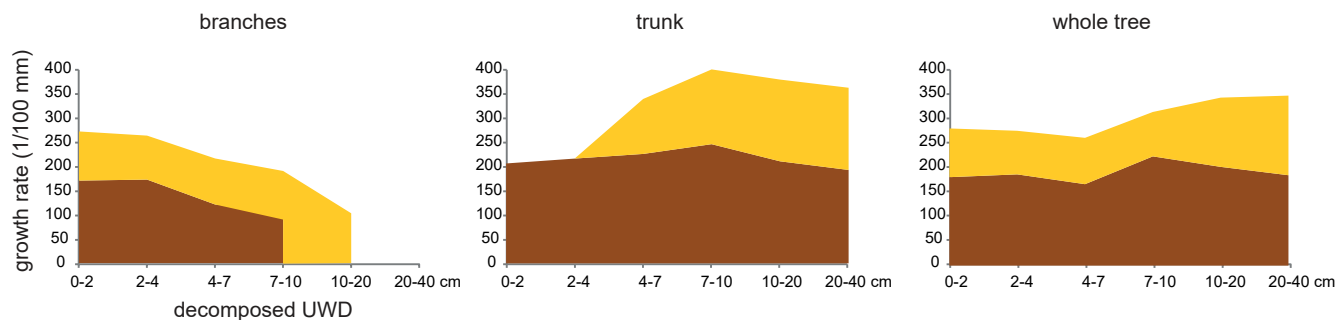
trunk



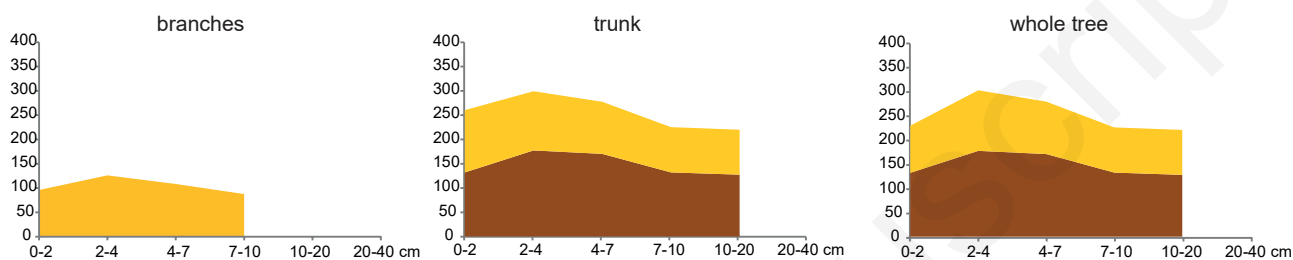
branches



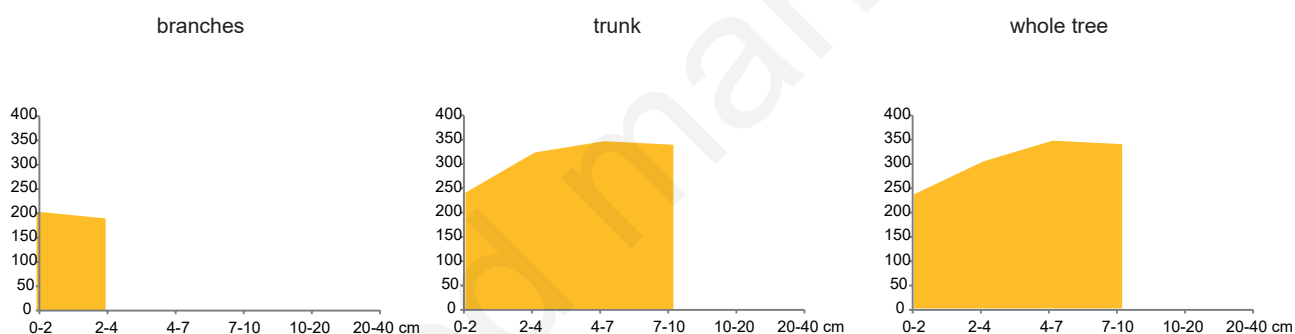
Bogny-sur-Meuse



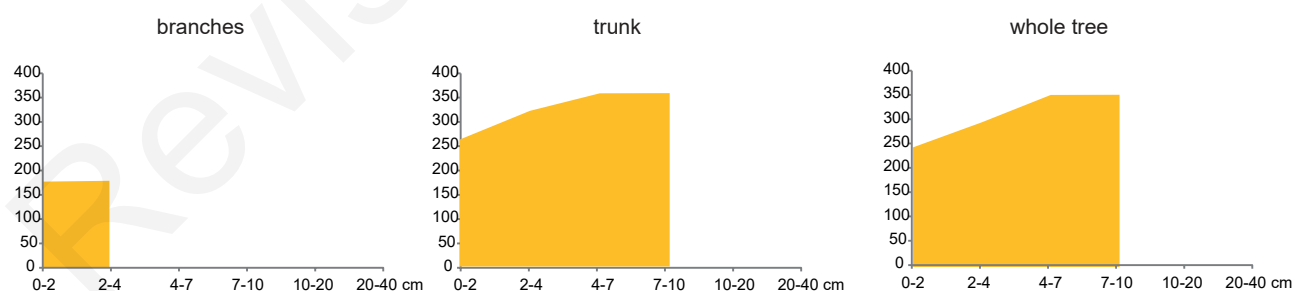
Cagouillères



Bois de l'Or- seeded trees

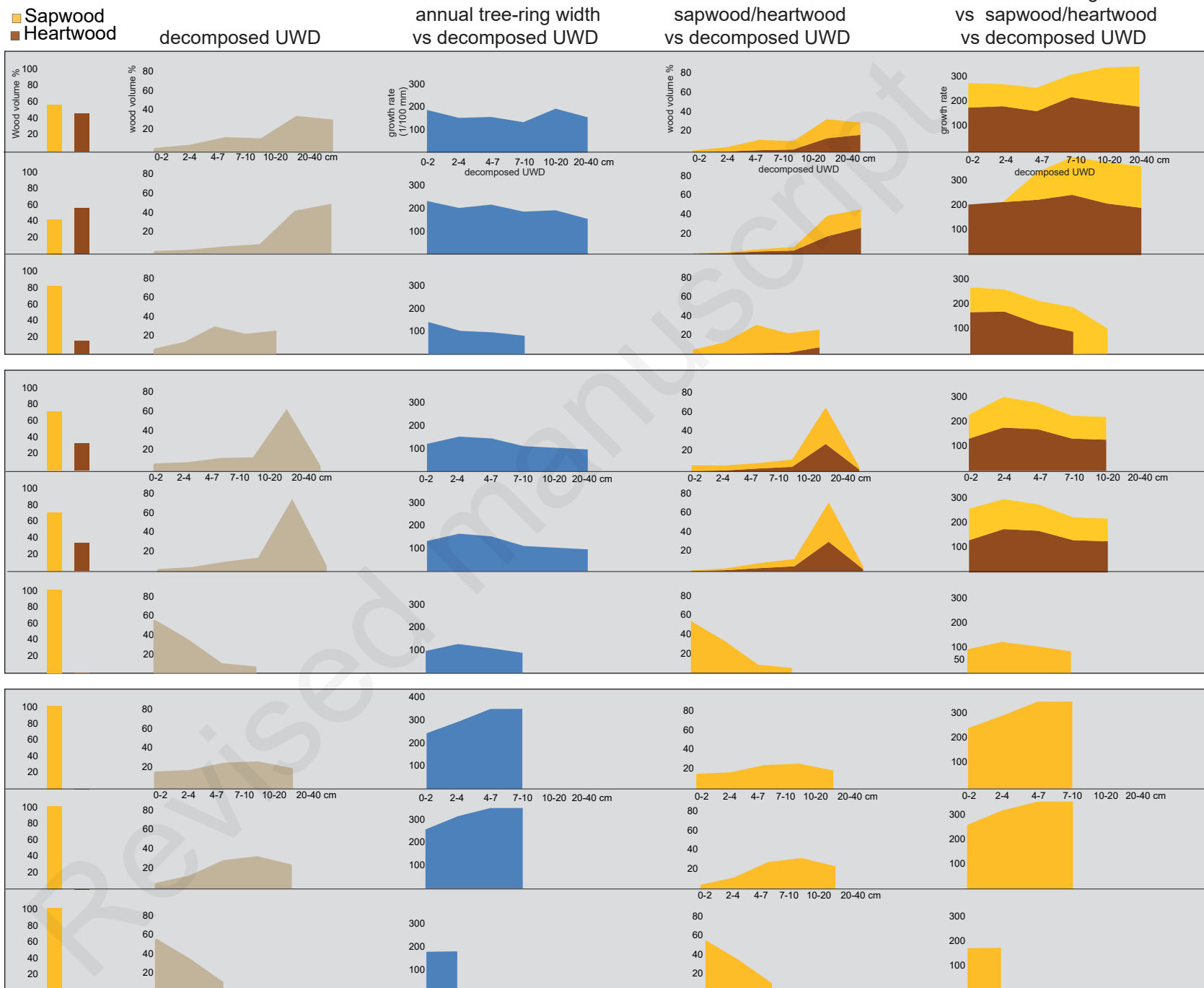
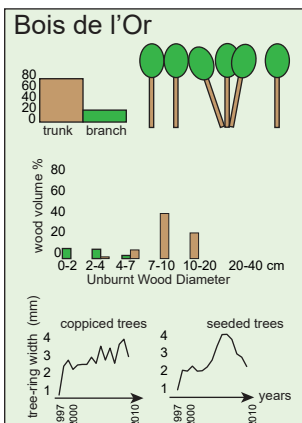
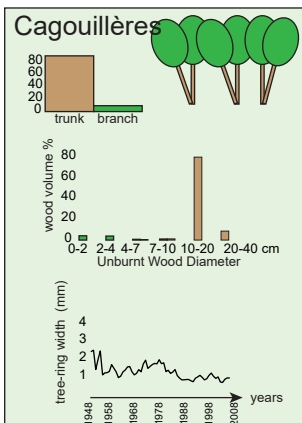
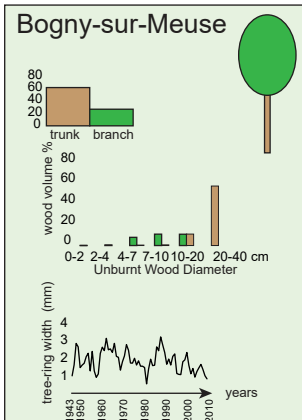


Bois de l'Or- coppiced trees

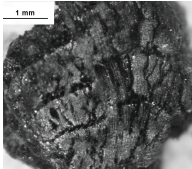
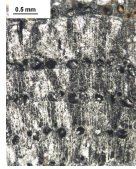
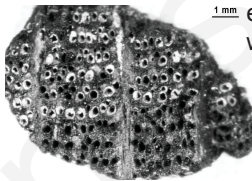



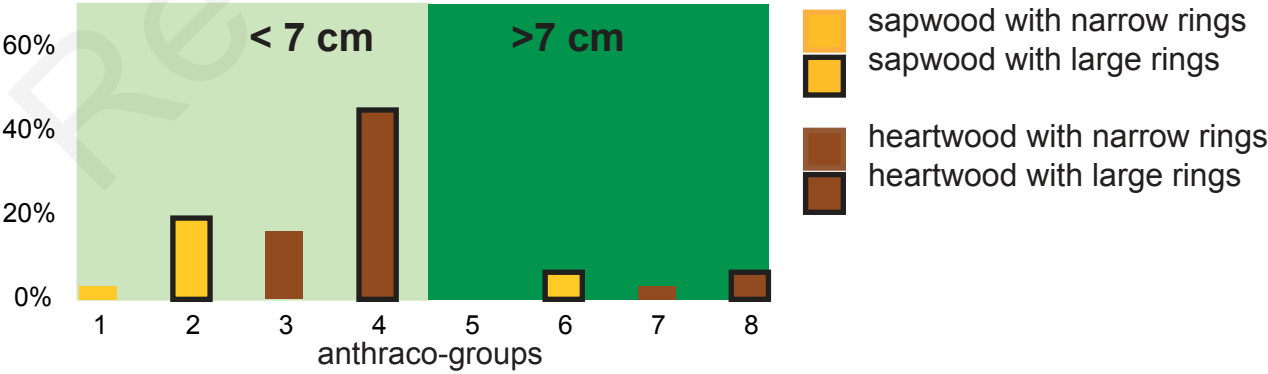
■ sapwood
■ heartwood

dendrological features of modern wood stand



REGULAR WIDTH RINGS

charcoal-pith distance	heartwood/sapwood	tree-ring width	anthraco-groups	charcoal fragments
< 3.5 cm (diameter < 7 cm)	Sapwood	narrow rings	1	 young woods
		large rings	2	
	Heartwood	narrow rings	3	 internal part of mature woods
		large rings	4	
> 3.5 cm (diameter > 7 cm)	Sapwood	narrow rings	5	 external part of mature woods
		large rings	6	
	Heartwood	narrow rings	7	 middle part of mature woods
		large rings	8	



Dendrological characteristics		SITES		
		Le Bois de l'or	Bogny-sur-Meuse	Les Cagouillères
	Description	Self seeded and coppice trees	Dominant tree of a coppice-under-standard	Abandoned old coppice
	Age	< 15 years old	68 years old	About 60 years old
	Substratum	Brown soil on schists	Brown soil on schists	Calcareous plateau
<i>Trees with a diameter less than 7.5 cm</i>	basal area increment (m ² /ha)	6.4	2.7	—
	stand density (number of stems /ha)	4924	2387	—
	average square diameter (cm)	4.1	3.8	—
<i>Trees with a diameter more than 7.5 cm</i>	basal area increment (m ² /ha)	7.6	20	—
	stand density (number of stems /ha)	1074	462	1300
	average square diameter (cm)	9.5	23.5	—
	dominant height (m)	9.1	22.2	18
Sampled trees	description	coppice trees	self-seeded trees	Dominant tree
	number of sampled trees	5	5	1
	average square diameter at 1,3 m (cm)	10.4	10	30.6
	total height (m)	8.8	8.5	20.3
	ratio height/diameter (m/m)	84.6	85	66.
	height of the first large branch (m)	3.9	3.7	7.7
	height of the base of the crown (m)	3.1	3	8.5
	average square diameter of the crown (m)	5.7	5.5	7.3

Station	Tree	Regeneration	Disc reference	Organ	Height (m)	Age	Radius under bark (cm)	Heartwood width (cm)	Sapwood width(cm)	Number of sapwood tree rings
Bogny-sur-Meuse	Bog. 0	dominant self-seeded tree	0a	trunk	1	68	13.43	10.09	3.34	18
	Bog. 0		0d	trunk	4	61	11.99	9.28	2.71	16
	Bog. 0		0f	trunk	6	52	11.41	8.86	2.55	15
	Bog. 0		0h1b	branch	—	45	5.44	3.61	1.83	26
	Bog. 0		0h1b1a	branch	—	43	4.78	2.35	2.43	29
	Bog. 0		0h1b1b	branch	—	40	4.06	0.00	4.06	40
	Bog. 0		0h1b1e	branch	—	30	2.74	0.00	2.74	30
	Bog. 0		0h1d	branch	—	39	4.44	2.52	1.92	22
	Bog. 0		0h1e	branch	—	36	4.49	2.09	2.41	20
	Bog. 0		0h1f	branch	—	32	3.75	0.00	3.75	32
	Bog. 0		0m1a	branch	—	38	3.41	0.00	3.41	38
	Bog. 0		0n	trunk	14	36	4.96	2.13	2.83	21
	Bog. 0		0n2a	branch	—	33	2.68	0.00	2.68	33
	Bog. 0		0n2b	branch	—	28	2.48	0.00	2.48	28
Cagouillères	Cag. A	coppice trees	A11A	trunk	11	41	4.71	1.32	3.39	34
	Cag. A		A17A	trunk	17	36	3.29	0.00	3.29	36
	Cag. A		A33A	branch	—	26	1.82	0.00	1.82	26
	Cag. B		B10C	trunk	10	36	5.42	2.86	2.56	23
	Cag. B		B1A	trunk	1	61	8.33	5.96	2.37	22
	Cag. B		B1C	trunk	1	60	8.49	5.65	2.84	23
	Cag. B		B2A	trunk	2	58	7.19	4.72	2.47	23
	Cag. B		B3. C	trunk	3	55	7.02	4.24	2.79	24
	Cag. B		B3A	trunk	3	57	7.18	4.57	2.61	24
	Cag. B		B48B	branch	—	23	1.93	0.00	1.93	23
	Cag. C		C2	trunk	2	60	6.08	3.37	2.70	22
	Cag. C		C2B	trunk	2	60	6.25	4.79	1.46	23
	Cag. C		C3A	trunk	3	55	6.12	4.62	1.50	23
	Cag. C		C48A	branch	—	30	3.33	1.02	2.31	22
	Cag. C		C51A	branch	—	18	2.13	0.00	2.13	18
	Cag. C		C52A	branch	—	14	1.72	0.00	1.72	14
	Cag. C		C5A	trunk	5	46	5.60	4.03	1.57	22
	Cag. C		C8C	trunk	8	37	4.98	3.32	1.66	21
	Cag. D		D10A	trunk	10	48	6.28	3.48	2.80	31
	Cag. D		D13A	trunk	13	38	3.96	0.75	3.21	29
	Cag. D		D3C	trunk	3	61	8.45	5.61	2.84	36
	Cag. D		D47A	branch	—	19	2.49	0.00	2.49	19
	Cag. D		D47B	branch	—	20	2.89	0.00	2.89	20

Station	Tree	Regeneration	Disc reference	Organ	Height (m)	Age	Radius under bark (cm)	Heartwood width (cm)	Sapwood width(cm)	Number of sapwood tree rings
Bois de l'Or	Boi.10	seeded trees	10A.A	Trunk	1	14	4.17	0	4.17	14
	Boi.10		10B.A	Trunk	2	12	3.43	0	3.43	12
	Boi.10		10C.A	Trunk	3	11	2.84	0	2.84	11
	Boi.10		10D.A	Trunk	4	9	2.62	0	2.62	9
	Boi.10		10E.A	Trunk	5	7	1.59	0	1.59	7
	Boi.10		10F.A	Trunk	6	5	0.92	0	0.92	5
	Boi.13		13A.A	Trunk	1	15	4.16	0	4.16	15
	Boi.13		13B.A	Trunk	2	12	3.52	0	3.52	12
	Boi.13		13C.A	Trunk	3	11	3.44	0	3.44	11
	Boi.13		13D.A	Trunk	4	9	3.07	0	3.07	9
	Boi.13		13E.A	Trunk	5	8	2.27	0	2.27	8
	Boi.13		13F.A	Trunk	6	6	1.96	0	1.96	6
	Boi.13		13G.A	Trunk	7	4	2.75	0	2.75	4
	Boi.13		13C-1A B c	branch	-	6	1.33	0	1.33	6
	Boi.14		14A.A	Trunk	1	14	4.19	0	4.19	14
	Boi.14		14B.A	Trunk	2	11	3.60	0	3.60	11
	Boi.14		14C.A	Trunk	3	9	3.01	0	3.01	9
	Boi.14		14D.A	Trunk	4	8	2.82	0	2.82	8
	Boi.14		14E.A	Trunk	5	6	2.59	0	2.59	6
	Boi.14		14F.A	Trunk	6	7	2.60	0	2.60	7
	Boi.14		14G.A	Trunk	7	4	1.44	0	1.44	4
	Boi.14		14D-2A B c	branch	-	8	1.56	0	1.56	8
	Boi.17		17A.A	Trunk	1	14	4.85	0	4.85	14
	Boi.17		17B.A	Trunk	2	12	2.97	0	2.97	12
	Boi.17		17C.A	Trunk	3	11	2.85	0	2.85	11
	Boi.17		17D.A	Trunk	4	9	2.43	0	2.43	9
	Boi.17		17E.A	Trunk	6	7	1.49	0	1.49	7
	Boi.17		17E-1A	branch	-	8	1.96	0	1.96	8
	Boi.17		17F.A	Trunk	6	5	1.32	0	1.32	5
	Boi.17		17G.A	Trunk	7	4	0.89	0	0.89	4
	Boi.19		19A.A	Trunk	1	13	4.29	0	4.29	13
	Boi.19		19B.A	Trunk	2	12	3.61	0	3.61	12
	Boi.19		19C.A	Trunk	3	9	3.43	0	3.43	9
	Boi.19		19D.A	Trunk	-	8	2.95	0	2.95	8
	Boi.19		19E.A	Trunk	5	7	2.22	0	2.22	7
	Boi.19		19F.A	Trunk	6	5	1.62	0	1.62	5
	Boi.19		19C-2A	branch	4	9	1.22	0	1.22	9
Bois de l'Or	Boi.11	coppice trees	11A.A	Trunk	1	16	4.72	0	4.72	16
	Boi.11		11B.A	Trunk	2	14	3.55	0	3.55	14
	Boi.11		11C.A	Trunk	3	12	3.52	0	3.52	12
	Boi.11		11D.A	Trunk	4	10	2.91	0	2.91	10
	Boi.11		11E.A	Trunk	5	8	2.18	0	2.18	8
	Boi.11		11F.A	Trunk	6	6	1.70	0	1.70	6
	Boi.11		11G.A	Trunk	7	4	2.92	0	2.92	4
	Boi.11		11E-3A A c	branch	-	9	1.48	0	1.48	9
	Boi.12		12A.A	Trunk	1	14	4.58	0	4.58	14
	Boi.12		12B.A	Trunk	2	14	4.10	0	4.10	14
	Boi.12		12C.A	Trunk	3	12	3.91	0	3.91	12
	Boi.12		12D.A	Trunk	4	10	3.41	0	3.41	10
	Boi.12		12E.A	Trunk	5	8	3.61	0	3.61	8
	Boi.12		12F.A	Trunk	6	6	2.28	0	2.28	6
	Boi.12		12G.A	Trunk	7	5	1.23	0	1.23	5
	Boi.12		12H.A	Trunk	8	4	0.85	0	0.85	4
	Boi.12		12E-1A D c	branch	-	9	1.30	0	1.30	9
	Boi.15		15A.A	Trunk	1	14	3.99	0	3.99	14
	Boi.15		15B.A	Trunk	2	12	3.49	0	3.49	12
	Boi.15		15C.A	Trunk	3	11	3.15	0	3.15	11
	Boi.15		15D.A	Trunk	4	8	1.87	0	1.87	8
	Boi.15		15E.A	Trunk	5	6	1.30	0	1.30	6
	Boi.15		15F.A	Trunk	6	4	0.84	0	0.84	4
	Boi.15		15D-1A	branch	-	8	1.66	0	1.66	8
	Boi.16		16A.A	Trunk	1	14	4.36	0	4.36	14
	Boi.16		16B.A	Trunk	2	13	3.94	0	3.94	13
	Boi.16		16C.A	Trunk	3	12	3.56	0	3.56	12
	Boi.16		16D.A	Trunk	4	9	3.14	0	3.14	9
	Boi.16		16E.A	Trunk	5	13	3.69	0	3.69	13
	Boi.16		16F.A	Trunk	6	11	2.80	0	2.80	11
	Boi.16		16G.A	Trunk	7	4	1.10	0	1.10	4
	Boi.16		16E-3A	branch	-	8	1.14	0	1.14	8
	Boi.18		18A.A	Trunk	1	13	4.05	0	4.05	13
	Boi.18		18B.A	Trunk	2	12	4.25	0	4.25	12
	Boi.18		18C.A	Trunk	3	11	3.34	0	3.34	11
	Boi.18		18D.A	Trunk	4	10	3.09	0	3.09	10
	Boi.18		18E.A	Trunk	5	8	2.13	0	2.13	8
	Boi.18		18E-3A	branch	-	8	1.82	0	1.82	8
	Boi.18		18F.A	Trunk	6	6	1.34	0	1.34	6
	Boi.18		18G.A	Trunk	7	5	1.17	0	1.17	5