



**HAL**  
open science

## Far-infrared observations of a massive cluster forming in the Monoceros R2 filament hub

T. S. M. Rayner, M. J. Griffin, N. Schneider, F. Motte, V. Könyves, P. André, J. Di Francesco, P. Didelon, K. Pattle, D. Ward-Thompson, et al.

### ► To cite this version:

T. S. M. Rayner, M. J. Griffin, N. Schneider, F. Motte, V. Könyves, et al.. Far-infrared observations of a massive cluster forming in the Monoceros R2 filament hub. *Astronomy and Astrophysics - A&A*, 2017, 607, pp.id.A22. 10.1051/0004-6361/201630039 . hal-01633848

**HAL Id: hal-01633848**

**<https://hal.science/hal-01633848>**

Submitted on 1 Dec 2021

**HAL** is a multi-disciplinary open access archive for the deposit and dissemination of scientific research documents, whether they are published or not. The documents may come from teaching and research institutions in France or abroad, or from public or private research centers.

L'archive ouverte pluridisciplinaire **HAL**, est destinée au dépôt et à la diffusion de documents scientifiques de niveau recherche, publiés ou non, émanant des établissements d'enseignement et de recherche français ou étrangers, des laboratoires publics ou privés.



Distributed under a Creative Commons Attribution 4.0 International License

# Far-infrared observations of a massive cluster forming in the Monoceros R2 filament hub<sup>★</sup>

T. S. M. Rayner<sup>1</sup>, M. J. Griffin<sup>1</sup>, N. Schneider<sup>2, 3</sup>, F. Motte<sup>4, 5</sup>, V. Könyves<sup>5</sup>, P. André<sup>5</sup>, J. Di Francesco<sup>6</sup>, P. Didelon<sup>5</sup>, K. Pattle<sup>7</sup>, D. Ward-Thompson<sup>7</sup>, L. D. Anderson<sup>8</sup>, M. Benedettini<sup>9</sup>, J.-P. Bernard<sup>10</sup>, S. Bontemps<sup>3</sup>, D. Elia<sup>9</sup>, A. Fuente<sup>11</sup>, M. Hennemann<sup>5</sup>, T. Hill<sup>5, 12</sup>, J. Kirk<sup>7</sup>, K. Marsh<sup>1</sup>, A. Men'shchikov<sup>5</sup>, Q. Nguyen Luong<sup>13, 14</sup>, N. Peretto<sup>1</sup>, S. Pezzuto<sup>9</sup>, A. Rivera-Ingraham<sup>15</sup>, A. Roy<sup>5</sup>, K. Rygl<sup>16</sup>, Á. Sánchez-Monge<sup>2</sup>, L. Spinoglio<sup>9</sup>, J. Tigé<sup>17</sup>, S. P. Treviño-Morales<sup>18</sup>, and G. J. White<sup>19, 20</sup>

<sup>1</sup> Cardiff School of Physics and Astronomy, Cardiff University, Queen's Buildings, The Parade, Cardiff, Wales, CF24 3AA, UK  
e-mail: T.Rayner@astro.cf.ac.uk

<sup>2</sup> I. Physik. Institut, University of Cologne, 50937 Cologne, Germany

<sup>3</sup> Laboratoire d'Astrophysique de Bordeaux, Univ. Bordeaux, CNRS, B18N, allée G. Saint-Hilaire, 33615 Pessac, France

<sup>4</sup> Université Grenoble Alpes, CNRS, Institut de Planétologie et d'Astrophysique de Grenoble, 38000 Grenoble, France

<sup>5</sup> Laboratoire AIM, CEA/IRFU, CNRS/INSU, Université Paris Diderot, CEA-Saclay, 91191 Gif-sur-Yvette Cedex, France

<sup>6</sup> NRC, Herzberg Institute of Astrophysics, Victoria, V8P1A1, Canada

<sup>7</sup> Jeremiah Horrocks Institute, University of Central Lancashire, Preston PR1 2HE, UK

<sup>8</sup> Department of Physics and Astronomy, West Virginia University, Morgantown, WV 26506, USA

<sup>9</sup> INAF-Istituto di Astrofisica e Planetologia Spaziali, via Fosso del Cavaliere 100, 00133 Roma, Italy

<sup>10</sup> Université de Toulouse, UPS-OMP, IRAP, 31400 Toulouse, France

<sup>11</sup> Observatorio Astronómico Nacional (OAN), Apdo 112, 28803 Alcalá de Henares, Madrid, Spain

<sup>12</sup> Joint ALMA Observatory, 3107 Alonso de Cordova, 7630355 Vitacura, Santiago, Chile

<sup>13</sup> Korea Astronomy and Space Science Institute, 776 Daedeokdae-ro, Yuseong-gu, Daejeon 305-348, Republic of Korea

<sup>14</sup> National Astronomical Observatory of Japan, Chile Observatory, 2-21-1 Osawa, Mitaka, Tokyo 181-8588, Japan

<sup>15</sup> ESA/ESAC, 28691 Villanueva de la Cañada, Madrid, Spain

<sup>16</sup> INAF-Istituto di Radioastronomia, via Gobetti 101, 40129 Bologna, Italy

<sup>17</sup> Aix-Marseille Université, CNRS, LAM (Laboratoire d'Astrophysique de Marseille) UMR 7326, 13388 Marseille, France

<sup>18</sup> Instituto de Ciencia de Materiales de Madrid (ICMM-CSIC), Sor Juana Inés de la Cruz 3, 28049 Cantoblanco, Madrid, Spain

<sup>19</sup> The Rutherford Appleton Laboratory, Chilton, Didcot OX11 0NL, UK

<sup>20</sup> Department of Physics and Astronomy, The Open University, Milton Keynes, MK76AA, UK

Received 10 November 2016 / Accepted 21 August 2017

## ABSTRACT

We present far-infrared observations of Monoceros R2 (a giant molecular cloud at approximately 830 pc distance, containing several sites of active star formation), as observed at 70  $\mu\text{m}$ , 160  $\mu\text{m}$ , 250  $\mu\text{m}$ , 350  $\mu\text{m}$ , and 500  $\mu\text{m}$  by the Photodetector Array Camera and Spectrometer (PACS) and Spectral and Photometric Imaging Receiver (SPIRE) instruments on the *Herschel* Space Observatory as part of the *Herschel* imaging survey of OB young stellar objects (HOBYS) Key programme. The *Herschel* data are complemented by SCUBA-2 data in the submillimetre range, and WISE and *Spitzer* data in the mid-infrared. In addition, C<sup>18</sup>O data from the IRAM 30-m Telescope are presented, and used for kinematic information. Sources were extracted from the maps with *getsources*, and from the fluxes measured, spectral energy distributions were constructed, allowing measurements of source mass and dust temperature. Of 177 *Herschel* sources robustly detected in the region (a detection with high signal-to-noise and low axis ratio at multiple wavelengths), including protostars and starless cores, 29 are found in a filamentary hub at the centre of the region (a little over 1% of the observed area). These objects are on average smaller, more massive, and more luminous than those in the surrounding regions (which together suggest that they are at a later stage of evolution), a result that cannot be explained entirely by selection effects. These results suggest a picture in which the hub may have begun star formation at a point significantly earlier than the outer regions, possibly forming as a result of feedback from earlier star formation. Furthermore, the hub may be sustaining its star formation by accreting material from the surrounding filaments.

**Key words.** ISM: individual objects: Mon R2 – HII regions – stars: protostars – stars: formation – ISM: structure – dust, extinction

## 1. Introduction

*Star formation and Herschel.* The formation of higher-mass (over  $\sim 10 M_{\odot}$ ) stars is a process that remains poorly understood,

even today (see, for example, [Krumholz 2015](#)). This situation is not helped by the rarity of such stars, or their short evolutionary timescales. Indeed, most regions of higher-mass star formation are over a kiloparsec from the Sun, meaning that observations require very high angular resolution to view the scales relevant to star formation (10–1000 AU). Theoretically, there are two main suggested families of models, which differ by whether the protostar gains the majority of its mass from its prestellar core

<sup>★</sup> Full Tables 4 and D.1–D.9 and the C180 datacube are only available at the CDS via anonymous ftp to [cdsarc.u-strasbg.fr](http://cdsarc.u-strasbg.fr) (130.79.128.5) or via <http://cdsarc.u-strasbg.fr/viz-bin/qcat?J/A+A/607/A22>

(core accretion, or monolithic collapse; [McKee & Tan 2002](#)) or from its surroundings, either from protostellar collisions, or from a shared potential well (known as competitive accretion; [Bonnell & Bate 2006](#)).

The two models both require large amounts of matter to be concentrated in a single part of the cloud, and thus require a method by which such high densities can form. One method of achieving such densities would be by the flow of material along filaments into dense “hubs”, which exist at the points where filaments merge ([Myers 2009](#); [Schneider et al. 2012](#); [Kirk et al. 2013a](#); [Peretto et al. 2013](#)). These filaments and hubs generally have dust temperatures of  $\sim 10\text{--}25$  K, and thus they have a spectral energy distribution (SED) that peaks in the far-infrared (FIR;  $\sim 100\text{--}500\ \mu\text{m}$ ).

The *Herschel* Space Observatory ([Pilbratt et al. 2010](#))<sup>1</sup> was designed to observe such wavelengths, using two photometric instruments: Spectral and Photometric Imaging Receiver (SPIRE; [Griffin et al. 2010](#),  $250\text{--}500\ \mu\text{m}$ ) and Photodetector Array Camera and Spectrometer (PACS; [Poglitsch et al. 2010](#),  $70\text{--}160\ \mu\text{m}$ ) that, together, covered the desired wavelength range.

Among the *Herschel* guaranteed time Key programs, the “*Herschel* imaging survey of OB young stellar objects” (HOBYS, PIs: F. Motte, A. Zavagno, S. Bontemps; [Motte et al. 2010](#)) was proposed to image regions of high- and intermediate-mass star formation, with a view to studying the initial conditions of medium- and high-mass star formation, and potentially allowing for a better understanding of the process. The regions observed by the HOBYS program include high-density hubs and ridges (high-density filaments;  $\text{H}_2$  column density above  $\sim 10^{23}\ \text{cm}^{-2}$ ) in which conditions are favourable for the formation of medium- to high-mass (over  $\sim 10 M_{\odot}$ ) OB stars, such as Vela C ([Hill et al. 2011](#); [Giannini et al. 2012](#)), Cygnus X ([Hennemann et al. 2012](#)), W48 ([Nguyen Luong et al. 2011](#)), W43 ([Nguyen Luong et al. 2013](#)), NGC 6334 ([Tigé et al. 2017](#)), NGC 7538 ([Fallscheer et al. 2013](#)), and Monoceros R2 ([Didelon et al. 2015](#)). The first surveys were presented in [Motte et al. \(2010\)](#) and [Nguyen Luong et al. \(2011\)](#), and the first catalogue is given in [Tigé et al. \(2017\)](#).

Another *Herschel* survey, the “*Herschel* Gould Belt survey” (HGBS, [André et al. 2010](#)), was devoted to observing regions within the Gould Belt (or Gould’s Belt; a ring of stars and regions of star formation approximately  $700 \times 1000$  pc across). The regions observed are mainly regions of low-mass star formation, including the Aquila rift ([Könyves et al. 2010, 2015](#)); Lupus 1, 3, and 4 ([Benedettini et al. 2015](#)); Orion ([Schneider et al. 2013](#)); Pipe Nebula ([Peretto et al. 2012](#)); and Taurus ([Kirk et al. 2013b](#); [Marsh et al. 2014, 2016](#)).

The HOBYS and HGBS surveys use specific definitions for various observed objects, which are given here. A “dense core” is a small, gravitationally bound clump of dust and gas, which will collapse (or has begun collapsing) to form a protostar or protobinary. A “prestellar core” is a starless dense core, while a “protostellar core” is a dense core with an embedded young stellar object or protostar. “Massive dense cores” (MDCs) are 0.1 pc cloud structures which are massive enough to have the potential to form high-mass OB stars (see [Motte et al. 2017](#)). In this paper, “starless” refers to any object that is gravitationally bound but contains no visible protostar (including both prestellar cores and massive dense cores). “Unbound clumps” are apparent objects visible on maps, but not bound by their own self-gravity.

<sup>1</sup> *Herschel* is an ESA space observatory with science instruments provided by European-led Principal Investigator consortia and with important participation from NASA.

“Source” refers to any apparent object detected by the source-finding routine, whether it is a real astrophysical object or a false positive.

*Monoceros R2*. Monoceros R2 (or Mon R2) was initially described by [Van den Bergh \(1966\)](#) in a study of associations of reflection nebulae. The association lies at an estimated 830 pc from the Sun (see Sect. 3.1), and is visible as a  $2.4^{\circ}$  (35 pc)-long string of reflection nebulae running roughly east-west (shown in the visible part of the spectrum in [Racine & van den Bergh 1970](#)). The molecular cloud is intermediate between the Gould Belt regions and the typical HOBYS regions, in both scale and distance. Indeed, it is located almost directly between the Orion A and B molecular clouds (in the Gould Belt,  $\sim 400$  pc from the Sun) and Canis Major OB1 (not a HOBYS region, but as a region of high-mass star formation  $\sim 1200$  pc from the Sun, it is certainly similar), and potentially connects the two ([Maddalena et al. 1986](#)). It is this that makes it particularly interesting as a region with properties intermediate between observations of the Gould Belt and those of the more distant HOBYS regions, such as NGC 6334 ([Tigé et al. 2017](#)).

Other regions of the Mon R2 GMC (giant molecular cloud) had previously been detected through extinction (LDN 1643–6; [Lynds 1962](#)). The ultracompact H II (UCH II) region PKS 0605–06 ([Shimmins et al. 1966a,b, 1969](#)) lies roughly at the centre of the nebula NGC 2170, the brightest and most westerly part of the association. The region immediately surrounding the UCH II region is often referred to as the Mon R2 Central Core (or even simply Mon R2); in this work it shall be referred to as the “central hub” to avoid confusion with starless and protostellar cores. Three further more-extended H II regions surround the central hub to the north, east and west.

The molecular cloud has been observed in CO and other molecules (such as CS,  $\text{H}_2\text{CO}$ , SO and HCN; [Loren et al. 1974](#); [Kutner & Tucker 1975](#); [White et al. 1979](#)). More recently, the Heterodyne Instrument for the Far-Infrared (HIFI; [De Graauw et al. 2010](#)) on *Herschel* has also observed Mon R2, in CO, CS,  $\text{HCO}^+$ , NH, CH, and  $\text{NH}_3$  ([Fuente et al. 2010](#); [Pilleri et al. 2012](#)), showing a chemical distinction between the H II region and its high-density surroundings. CO outflows have been detected stretching several parsecs in the NW–SE direction ([Bally & Lada 1983](#); [Wolf et al. 1990](#)), roughly in line with the region’s magnetic fields ([Hodapp 1987](#)).

[Beckwith et al. \(1976\)](#) studied the Mon R2 central hub at mid-infrared wavelengths ( $1.65\text{--}20\ \mu\text{m}$ ) and discovered that it is composed of several embedded young stellar and protostellar objects, one of which (Mon R2 IRS 1, likely a young B0) seems to be responsible for ionising the H II region. The region around the central hub also contains a dense cluster of around 500 stars and protostars, visible in the near-infrared ([Carpenter et al. 1997](#)), with almost 200 stars in the central square arcminute ([Andersen et al. 2006](#)). The cluster extends over  $\sim 1.1 \times 2.1$  pc, and is centred around Mon R2 IRS 1. This object (IRS 1) is coincident with the position of the most massive star (approximately  $10 M_{\odot}$ ) within the cluster. Although a second infrared source, Mon R2 IRS 3, is associated with a bright (550 Jy) water maser, a recent search of other similar cores in the region failed to detect any other water masers with intensities in excess of 0.5 Jy (White, in prep.), which are commonly associated with high-mass protostars.

Even more recently, [Dierickx et al. \(2015\)](#) used the SMA interferometer to make observations with higher angular resolution than before ( $0.5''\text{--}3''$ ) towards the central hub, at millimetre

wavelengths. Their results fit well with those of Beckwith et al. (1976), providing very-high-resolution measurements of a few objects detected in the hub, especially Mon R2 IRS 5, which is classified as an intermediate-to-high-mass young star, with prominent CO outflows at scales below  $10''$ , or  $0.04$  pc. Moreover, multiple outflows were also observed, associated with other nearby objects. Meanwhile, *Herschel* dust column density probability distribution functions (N-PDFs) of the region show an unusual overdensity around the central hub (Schneider et al. 2015; Pokhrel et al. 2016), which has been suggested as being due to feedback from such objects.

In this paper, we present far-infrared ( $70$ – $500\ \mu\text{m}$ ) observations towards the Monoceros R2 GMC. The observations were performed using the *Herschel* PACS and SPIRE instruments. We complement these observations using SCUBA-2 data (in the sub-millimetre regime), *Spitzer* and WISE data (in the mid infrared range) and IRAM 30-m Telescope observations (in the millimetre domain). The observations and data reduction are presented in Sect. 2. In Sect. 3, we give a qualitative description of the overall region. Section 4 presents dust temperature and column density maps of Mon R2. Section 5 presents the IRAM 30-m kinematic data, and discusses its significance for the region. Section 6 details the methods used to detect starless and protostellar cores, fit their fluxes to SEDs and classify them. In Sect. 7, we investigate star formation in the region, comparing and contrasting the properties of the sources inside and outside the central region. Section 8 summarises the main conclusions. Appendix A gives all maps directly used in the paper (all *Herschel* maps, together with the  $24\ \mu\text{m}$  MIPS map and the  $850\ \mu\text{m}$  SCUBA-2 map). Appendix B describes the *getsources* source-finding routine, and Appendix C tests the completeness of the *getsources* source identifications in Mon R2. Finally, the catalogues (for the most massive nine objects) are presented in Appendix D. (The full catalogue is available at the CDS.)

## 2. Observations and data reduction

### 2.1. *Herschel* observations

Mon R2 was observed on 4 September 2010, with *Herschel*, using the SPIRE and PACS instruments. The observations (ObsIDs: 1342204052 and 1342204053) were made as part of the HOBYS Key Project. The maps were made in Parallel Mode, using both PACS and SPIRE simultaneously, with two near-orthogonal ( $84.8^\circ$ ) scans over the region, scanning at  $20''/\text{s}$ , and covered five wavebands ( $70\ \mu\text{m}$ ,  $160\ \mu\text{m}$ ,  $250\ \mu\text{m}$ ,  $350\ \mu\text{m}$ , and  $500\ \mu\text{m}$ ). The bands' mean beam sizes at this scan speed are  $5.6''$ ,  $11.4''$ ,  $18.1''$ ,  $24.9''$ , and  $36.4''$  (values taken from the PACS Observer's Manual, v2.5.1 and SPIRE Handbook, v2.5) and their mean noise levels per beam are  $7.9$  ( $12.0$ ) mJy,  $7.4$  ( $26.8$ ) mJy,  $17.6$  ( $7.2$ ) mJy,  $10.9$  ( $5.9$ ) mJy, and  $12.6$  ( $8.5$ ) mJy respectively (values for Mon R2, with the mean values from the SPIRE PACS Parallel Mode Observers' Manual in parentheses). The area of overlap between the two instruments' scans was about  $0.85^\circ \times 0.85^\circ$  (or  $12\ \text{pc} \times 12\ \text{pc}$ ), centred on the J2000 coordinates  $06^{\text{h}}07^{\text{m}}30^{\text{s}} -06^\circ 15' 00''$ . A *Herschel* composite map ( $70\ \mu\text{m}$ ,  $160\ \mu\text{m}$ ,  $250\ \mu\text{m}$ ) is shown in Fig. 1.

The data were reduced using the *Herschel* Interactive Processing Environment (HIPE, version 11.1.0; Ott 2010). SPIRE data were reduced using the SPIA (SPIRE Interactive Analysis; Schulz 2011) pipeline. This corrects for relative bolometer gains and then maps the data with the HIPE Destriper, which adjusts the bolometer timelines iteratively until they converge. The SPIRE data used the HIPE point source calibration (Bendo et al. 2013; Griffin et al. 2013). This produces two sets of maps, three

calibrated for “point source” emission (in Jy/beam), and three for “extended emission” (in MJy/sr), which have also been given the zero-point emission offset using *Planck* data. For consistency with PACS, which only calibrates for point sources, in all further analysis only the “point source” maps have been used.

The PACS data were reduced using a HIPE-compatible variant of the *Scanamorphos* routine (Roussel 2013). *Scanamorphos* uses the spatial redundancy offered by multiple bolometer scans to estimate the overall emission, but without making any assumptions about the noise model.

The current PACS processing is unable to correct accurately for the diffuse Galactic background levels. The absolute levels can however be approximated by applying offsets taken from *Planck* data to provide the *Herschel* maps with background emission offsets, which are assumed for each waveband to remain constant over the mapped region (described in more detail in Bernard et al. 2010). The SPIRE offsets agree very well with those determined using the zero-point correction task in HIPE.

### 2.2. SCUBA-2 observations

In addition to the *Herschel* observations, Mon R2 was observed with the SCUBA-2 instrument (Holland et al. 2013) on the JCMT (data provided by D. Nutter). The data provided were used alongside the *Herschel* data, to provide coverage at longer wavelengths. The region was observed eighteen times between November 2011 and January 2012, as part of the guaranteed time project M11BGT01. Continuum observations at  $850\ \mu\text{m}$  and  $450\ \mu\text{m}$  were made using fully sampled  $1^\circ$  diameter circular regions (PONG3600 mapping mode; Bintley et al. 2014) at resolutions of  $14.1''$  and  $9.6''$ , respectively. We present the  $850\ \mu\text{m}$  observations here.

The data were reduced using the iterative map-making technique *makemap* in SMURF (Chapin et al. 2013), and gridded onto  $6''$  pixels at  $850\ \mu\text{m}$ . Areas of low emission were masked out based on their signal-to-noise ratio, and a mosaic was formed using this mask to define areas of emission. Detection of emission structure and calibration accuracy are robust within the masked regions, and are uncertain outside of the masked regions.

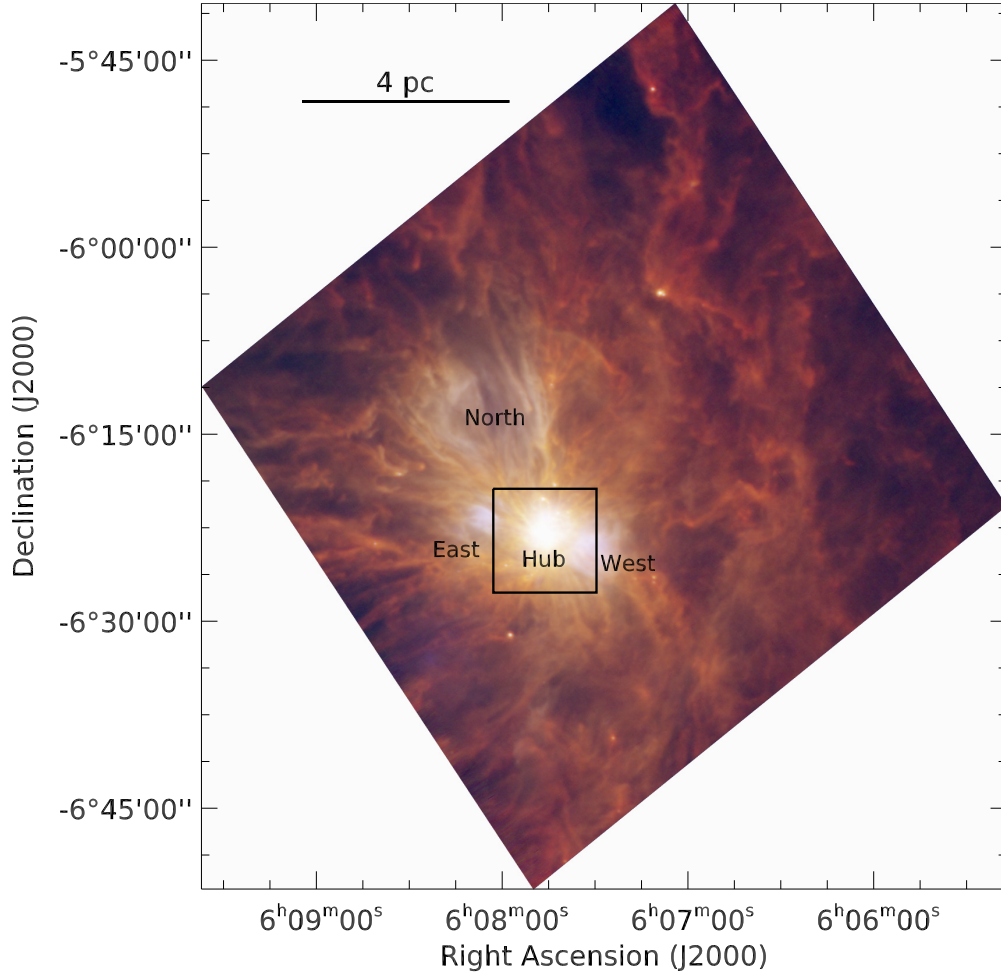
A spatial filter of  $10'$  is used in the reduction (described in Pattle et al. 2015). Flux recovery is robust for objects with a Gaussian FWHM less than  $2.5'$ . Objects between  $2.5'$  and  $7.5'$  in size will be detected, but both the flux density and the size will be underestimated because Fourier components with scales greater than  $5'$  are removed by the filtering process. Detection of objects larger than  $7.5'$  is dependent on the mask used for reduction.

The data are calibrated using the peak Flux Conversion Factor (FCF) of  $537\ \text{Jy/pW}$  at  $850\ \mu\text{m}$ , derived from average values of JCMT calibrators (Dempsey et al. 2013). The PONG scan pattern leads to lower noise levels in the map centre, while data reduction and emission artefacts can lead to small variations in noise level over the whole map.

### 2.3. IRAM 30-m observations

Mon R2 was also observed with the IRAM 30-m telescope, using the Eight Mixer Receiver (EMIR; Carter et al. 2012), between 12 September and 10 November 2014. The observations were carried out in the on-the-fly observing mode and covered an area of  $\sim 100$  square arcminutes centred on the J2000 coordinates  $06^{\text{h}}07^{\text{m}}46.2^{\text{s}} -06^\circ 23' 08.3''$ , in two frequency bands with coverage of  $213.1$ – $220.9$  GHz and  $228.8$ – $236.6$  GHz. The observations thus cover the molecular emission lines of  $^{12}\text{CO}$ ,  $^{13}\text{CO}$ ,





**Fig. 1.** Monoceros R2 as viewed by *Herschel*: PACS  $70\ \mu\text{m}$  in blue; PACS  $160\ \mu\text{m}$  in green; and SPIRE  $250\ \mu\text{m}$  in red. The image is cropped to the approximate overlap between the PACS and SPIRE maps. The black box indicates the central hub, which is shown in more detail in Fig. 2 (due to the large range in brightness, the detailed features of the central hub do not appear clearly in this three-colour image). The positions of the hub itself, and the three surrounding H II regions are also given. The three maps are given separately (with intensity scales) in Appendix A.

and  $\text{C}^{18}\text{O}\ 2 \rightarrow 1$ ,  $\text{DCN}\ 3 \rightarrow 2$ ,  $\text{DCO}^+\ 3 \rightarrow 2$ , and two  $\text{H}_2\text{CO}$  lines at 218.22 GHz and 219.16 GHz. In this paper, we only use the  $\text{C}^{18}\text{O}\ 2 \rightarrow 1$  data at 219.56 GHz. The instrument’s pointing and focus were tested every  $\sim 2$  h against nearby bright quasars. The emission-free reference position is located at  $06^{\text{h}}08^{\text{m}}26.2^{\text{s}} - 06^{\circ}33'08.3''$ .

The data were reduced with the GILDAS<sup>2</sup> software. A baseline of order 1 was subtracted. In order to convert from antenna temperatures (given in this paper) into main beam brightness temperatures, a scaling factor of  $\sim 0.6$  for the main beam efficiencies<sup>3</sup> needs to be applied.

#### 2.4. Other observations

In addition, mid-infrared data were used. These included  $24\ \mu\text{m}$  observations with the Multiband Imaging Photometer for *Spitzer* (MIPS; Rieke et al. 2004; Werner et al. 2004), which were taken from the *Spitzer* Heritage Archive. Data were also taken from the AllWISE Source Catalog, a catalogue of objects discovered as part of the Wide-field Infrared Survey Explorer (WISE; Wright et al. 2010) and NEOWISE

<sup>2</sup> <http://www.iram.fr/IRAMFR/GILDAS/>

<sup>3</sup> <http://www.iram.es/IRAMES/mainWiki/Iram30mEfficiencies>

(Mainzer et al. 2011) missions. In both cases, the data were used only to calculate source bolometric luminosities (defined here as the integral of flux densities from  $2\ \mu\text{m}$  to  $1\ \text{mm}$ ; Tigé et al. 2017). In addition,  $3.6\ \mu\text{m}$  data from *Spitzer*’s Infrared Array Camera (IRAC; Fazio et al. 2004) were used, solely for source visualisation, as seen in Appendix D. Both *Spitzer* and WISE are partially saturated at the central hub and cannot be used to determine the luminosities at that location. A full list of wavelengths used for this analysis is given in Table 1.

### 3. Overview of the Mon R2 region

Figure 1 shows a three-colour ( $70\ \mu\text{m}$ ,  $160\ \mu\text{m}$ ,  $250\ \mu\text{m}$ ) map of the Mon R2 region, and Figs. A.1–A.5 show individual maps at  $70\ \mu\text{m}$ ,  $160\ \mu\text{m}$ ,  $250\ \mu\text{m}$ ,  $350\ \mu\text{m}$ , and  $500\ \mu\text{m}$ , respectively. In addition, Figs. A.6 and A.7 show the  $24\ \mu\text{m}$  MIPS and  $850\ \mu\text{m}$  SCUBA-2 data, respectively.

The most striking feature of the *Herschel* maps of Mon R2 is the central hub, which is very bright in all five wavebands. This region is located at the junction (hence the term “hub”) of several filaments, which are also prominent at most wavelengths. Most of the large-scale filamentary structure emits most strongly at  $500\ \mu\text{m}$ , indicating that the filaments consist of cold gas (although the poor spatial resolution at this wavelength makes

**Table 1.** Telescopes and wavelengths used in the analysis.

Telescope	Instrument	$\lambda$ ( $\mu\text{m}$ )	HPBW (arcsec)
Herschel	PACS	70	5.6
		160	11.4
	SPIRE	250	18.1
		350	24.9
JCMT	SCUBA-2	850	14.1
Spitzer	IRAC	3.6	1.5
	MIPS	24	6.0
WISE		3.4	6.1
		4.6	6.4
		12	6.5
		22	12.0

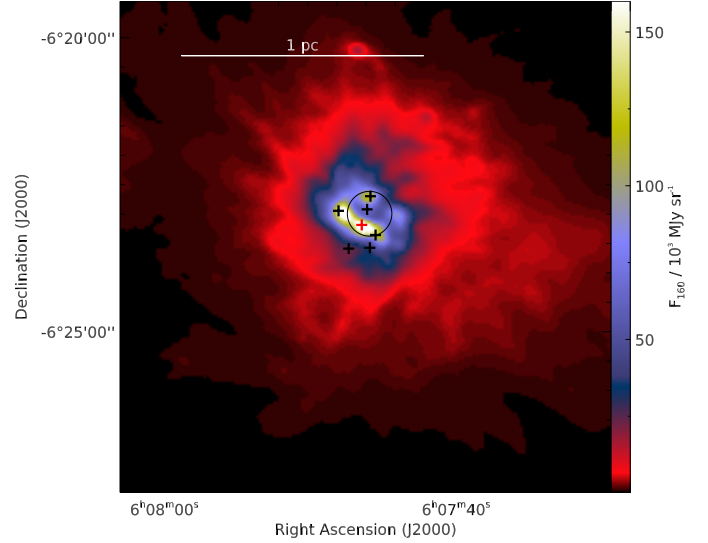
**Notes.** We note that the *Spitzer* 3.6  $\mu\text{m}$  was only used for source visualisation. The half power beam widths (HPBW; generally referred to as beam sizes) are taken from the references given in the text.

identification of features significantly easier at shorter wavelengths). However, a significant amount of this filamentary structure (most notably the region to the north-east of the hub) is even visible at 70  $\mu\text{m}$ , especially around the central region, which indicates heating of the filaments, most probably from the associated H II region.

The central hub itself can be seen in detail in the PACS and shorter wavelength SPIRE bands, as shown in Fig. 2. By inspection, the data appear to contain at least four separate infrared sources, arranged approximately to the north, east, south, and west. Comparison with Beckwith et al. (1976) suggests that these objects approximately correspond to their sources IRS 1 and 4 (south), IRS 5 (north), IRS 3 (east), and another, which was not in the region that they mapped.

The infrared sources appear to be connected, potentially by smaller-scale filamentary structures than those that converge on the central hub, and form a ring-shape around the H II region in projection, approximately 1', or 0.24 pc, across. Molecular line observations suggest that this ring is formed by the interactions between the PDR of the H II region and the denser surrounding material (Pilleri et al. 2013, 2014; Treviño-Morales et al. 2014, 2016). These filaments can be seen to radiate from the central hub in almost all directions. With the help of complementary molecular line data (see Sect. 5) we are able to show that most of the (2D projected) filaments seen in the *Herschel* data correspond to velocity-coherent objects. The observed velocity gradients suggest that the filaments are gravitationally attracted by the central potential well.

The distance to a reflection nebula can be calculated by finding the distances to the individual stars associated with that nebula. In the case of Mon R2, magnitude measurements of ten individual stars gave a distance of  $830 \pm 50$  pc (Racine 1968). A similar study of thirty stars confirmed this result (Herbst & Racine 1976). A more recent study of over 200 stars in the vicinity found a distance of  $905 \pm 37$  pc, and the even greater (although less precise) value  $925 \pm 150$  pc for the hub alone (Lombardi et al. 2011), and even more recent parallax measurements give a distance of  $893^{+44}_{-40}$  pc (Dzib et al. 2016). The values show good agreement, with a mean value of about 870 pc. For better comparison with prior literature, the Racine value ( $830 \pm 50$  pc) is used throughout this paper. Using a value



**Fig. 2.** Monoceros R2 central hub region as seen at 160  $\mu\text{m}$ . The region viewed is shown as the black box in Fig. 1. The black circle shows the approximate position and extent of the H II region (Pilleri et al. 2012; Didelon et al. 2015). The sources are from Beckwith et al. (1976), detected between 1.65  $\mu\text{m}$  and 20  $\mu\text{m}$  (the red object is Mon R2 IRS 1).

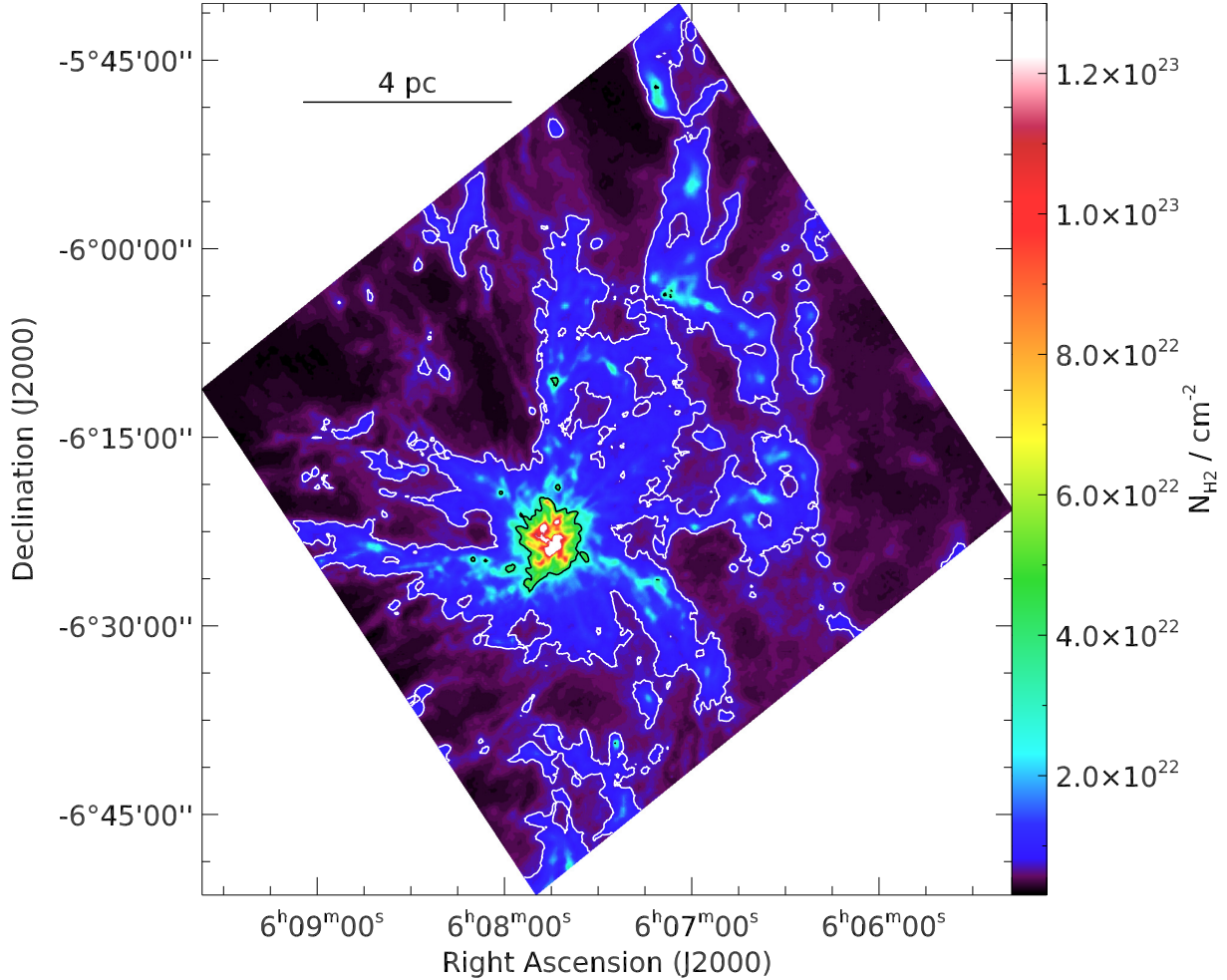
of 900 pc (in line with the more recent results) would systematically increase our source mass estimates by  $\sim 15\%$ .

#### 4. Column density and dust temperature maps

Molecular hydrogen column density and dust temperature maps were obtained by a pixel-by-pixel modified blackbody (grey-body) SED fit to the *Herschel* flux maps. For more details on the SED fit, see Sect. 6. We initially produced three column density maps with different angular resolutions ( $\Sigma_{500}$ ,  $\Sigma_{350}$ , and  $\Sigma_{250}$ ), which were then used to make a “super-resolution” column density map ( $\tilde{\Sigma}$ ), using the method given in Palmeirim et al. (2013); a similar method is used in Hill et al. (2012; we note that prior to the procedure, all maps were resampled to the smallest pixel size,  $2.85''$ ). The first column density map,  $\Sigma_{500}$ , was made by smoothing the 160  $\mu\text{m}$ , 250  $\mu\text{m}$  and 350  $\mu\text{m}$  maps to the resolution of the 500  $\mu\text{m}$  map ( $36.4''$ ), before fitting the SED to all four maps, giving a column density map with a  $36.4''$  resolution. The second column density map,  $\Sigma_{350}$ , was made by smoothing the 160  $\mu\text{m}$  and 250  $\mu\text{m}$  maps to the resolution of the 350  $\mu\text{m}$  map ( $24.9''$ ), and then fitting the SED to only these three maps. The third column density map,  $\Sigma_{250}$ , was made by smoothing the 160  $\mu\text{m}$  map to the resolution of the 250  $\mu\text{m}$  map ( $18.1''$ ), and using the flux ratio ( $F_{250}/F_{160}$ ) to create a new temperature map,  $T_{250}$ , using the method given in Shetty et al. (2009):

$$\frac{F_{\nu_1}}{F_{\nu_2}} = \left( \frac{\lambda_1}{\lambda_2} \right)^{3+\beta} \frac{\exp(\lambda_T/\lambda_2) - 1}{\exp(\lambda_T/\lambda_1) - 1}, \quad (1)$$

where  $F_{\nu_i}$  are the flux densities at the frequencies  $\nu_i$  (or wavelengths  $\lambda_i$ );  $\beta$ , the dust emissivity index, assumed to be 2; and  $\lambda_T = hc/kT$ , where:  $h$ ,  $c$  and  $k$  are the Planck constant, speed of light and Boltzmann constant, respectively; and  $T$  is the dust temperature.  $T_{250}$  was used to find a column density map,  $\Sigma_{250}$ , using the SED equation (Eq. (4) in Sect. 6), and using the 250  $\mu\text{m}$  flux map (and  $\lambda = 250 \mu\text{m}$ ). To create the final  $18.1''$  resolution column density map,  $\tilde{\Sigma}$ , the three previous column density



**Fig. 3.** Monoceros R2 high-resolution H<sub>2</sub> column density map ( $\tilde{\Sigma}$ ). The resolution is as for the 250  $\mu$ m map (18.1"). The contours are at the H<sub>2</sub> column densities  $7.5 \times 10^{21} \text{ cm}^{-2}$  (white) and  $3.5 \times 10^{22} \text{ cm}^{-2}$  (black).

maps ( $\Sigma_{500}$ ,  $\Sigma_{350}$ , and  $\Sigma_{250}$ ) were combined, using the following equation:

$$\tilde{\Sigma} = \Sigma_{500} + \Sigma_{350} - \Sigma_{350} * G_{500_350} + \Sigma_{250} - \Sigma_{250} * G_{350_250}, \quad (2)$$

where  $G_{500_350}$  and  $G_{350_250}$  are circular Gaussians with FWHMs equal to  $26.6''$  ( $\sqrt{36.4^2 - 24.9^2}$ ) and  $17.1''$  ( $\sqrt{24.9^2 - 18.1^2}$ ). This method ensures that the basic shape of  $\tilde{\Sigma}$  comes from the most reliable of the input column density maps ( $\Sigma_{500}$ , which uses four input flux maps), while the details come from maps with higher resolution but lower reliability ( $\Sigma_{350}$  and  $\Sigma_{250}$ ). To test the reliability of the final map ( $\tilde{\Sigma}$ ), it was smoothed to  $36.4''$  resolution and compared with the  $\Sigma_{500}$  map, yielding a difference of  $<3\%$  over 90% of the region. Unless otherwise stated, the term “column density map” hereinafter refers to this final map ( $\tilde{\Sigma}$ ). The final column density and 500  $\mu$ m dust temperature maps are given in Figs. 3 and 4.

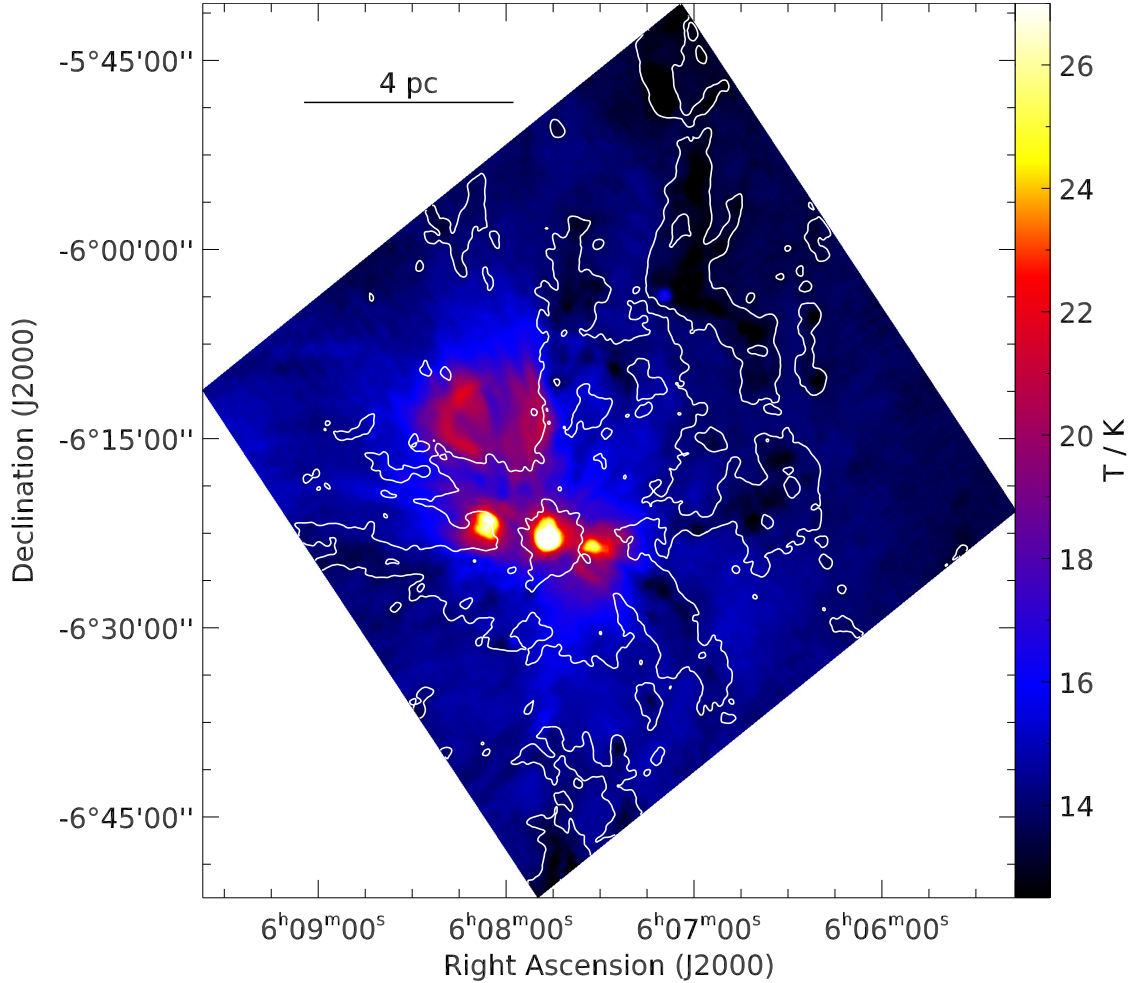
Looking at the column density map, the highly filamentary nature of the region can be clearly seen. The filaments correspond well to column densities above  $7.5 \times 10^{21} \text{ cm}^{-2}$  (white contour), while the central hub corresponds well to column densities above  $3.5 \times 10^{22} \text{ cm}^{-2}$  (black contour). Meanwhile, in the dust temperature map, it can be seen that the filamentary regions often correspond to lower temperatures (as expected, since a dense region will be better shielded from external radiation), while warmer regions (especially the northern and eastern H II regions) can be seen to correspond to lower-density

regions (both because the heating influence can spread farther in lower densities and also because the H II regions will naturally reduce their own local densities). This trend is inverted at the centre of the hub, which has the highest dust temperature in the region (this corresponds to the central UCH II region). This is potentially because the UCH II region has not yet had time to disperse its high-density surroundings; more examples of this are seen in NGC 6334 (Russeil et al. 2013; Tigé et al. 2017), W48A (Rygl et al. 2014) and part of the DR21 ridge (Hennemann et al. 2012). It should be noted that while the column density is two-dimensional (2D), and thus not completely analogous to the true three-dimensional (3D) molecular density, for a region with no significant foreground or background emission (such as Mon R2), it can be assumed that high-column-density regions are regions of actual high density.

## 5. Velocity structure

As described in Sect. 2.3, extended maps of isotopomeric CO  $2 \rightarrow 1$  and  $1 \rightarrow 0$  lines have recently been obtained with the IRAM 30-m telescope (PIs N. Schneider, A. Fuente, S. Treviño-Morales). We present here C<sup>18</sup>O  $2 \rightarrow 1$  data from these projects, which are fully shown and discussed in Treviño-Morales (2016), and in Rayner (2015). It should be noted that we do not aim to perform explicit filament detections and analyses here. Rather, we intend to show that what appears as filaments in projected





**Fig. 4.** Monoceros R2 dust temperature map. The resolution is as for the  $500\mu\text{m}$  map ( $36.4''$ ). The contours (as for Fig. 3) are at the  $\text{H}_2$  column densities  $7.5 \times 10^{21} \text{ cm}^{-2}$  and  $3.5 \times 10^{22} \text{ cm}^{-2}$ .

column density do indeed correspond to coherent velocity features, and can be used to derive first order approximations of their physical properties.

Figure 5 shows a channel map of  $\text{C}^{18}\text{O}$  emission overlaid on the column density map obtained with *Herschel*. The black contours of  $\text{C}^{18}\text{O}$  emission trace very well, in some velocity intervals, the filaments seen with *Herschel* and reveal velocity gradients that are potentially caused by inflow along inclined filaments. All clear correspondences are labelled (filaments F1–F8; identified by eye from the  $\text{C}^{18}\text{O}$  structures). Fainter filamentary structures that are only seen in the *Herschel* map were not considered for our census, even though they are partly identified in lower-density tracers such as  $^{12}\text{CO } 1 \rightarrow 0$ .

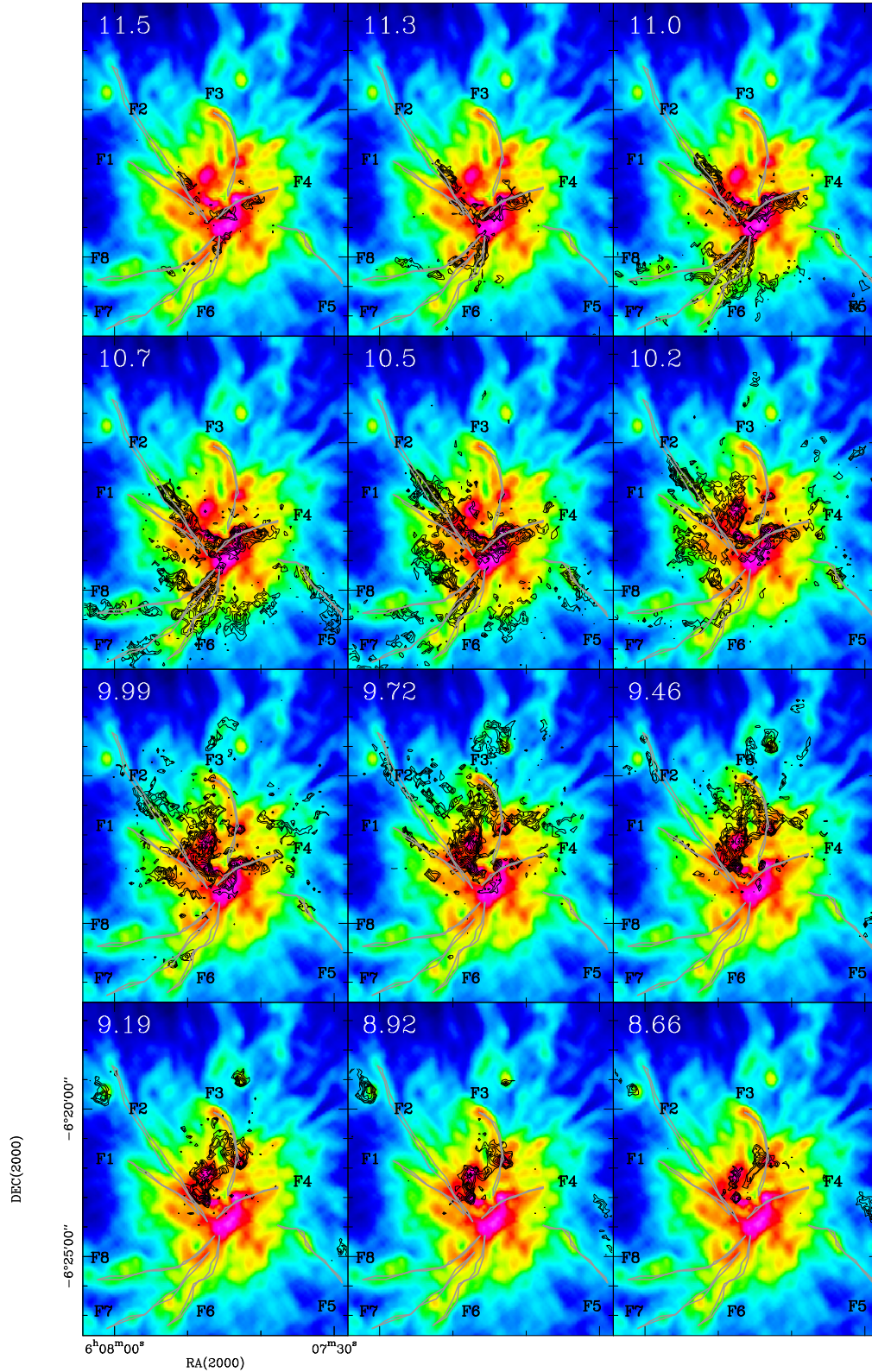
We note that these filaments do not exactly correspond to the filaments detected by the *getsources* routine (see Appendix B), which are detected by measuring large-scale but low width objects on the column density maps. The main reason for this discrepancy is not the method of identification, but rather the fact that the  $\text{C}^{18}\text{O}$  filaments have been identified across multiple molecular line maps, while the *getsources* filaments have been identified only on the column density map. Consequently, a one-to-one correlation would not be expected, both because  $\text{C}^{18}\text{O}$  does not directly trace dust column density, and also because the by-eye detection focuses on filaments that are coherent structures in velocity space, rather than 2-dimensional column density.

The two different sets of filaments are compared in Fig. 6, with the  $\text{C}^{18}\text{O}$  filaments in black, and the *getsources* filaments in white. There is reasonably good overlap in most cases, especially filament F2 (to the north-east) and F6 (to the south). Only two of the  $\text{C}^{18}\text{O}$  filaments are not detected by *getsources*, F3 (to the north) and F7 (to the south-east), and the former is certainly visible by eye.

One of the best examples of a velocity gradient is in F2, which shows its first emission close to to the cluster centre at  $11.5 \text{ km s}^{-1}$ . The  $\text{C}^{18}\text{O}$  emission then shifts towards north-east “along” the *Herschel* filament until a velocity of  $9.5 \text{ km s}^{-1}$ . This emission pattern is consistent with infall along a filament that is inclined towards the observer (although outflow along a filament inclined away from the observer is also a possibility). For other filaments, for example, F8, the top of the column lies at higher positive velocities, indicating that this part of the filament is tilted away from the observer (again, assuming infall). Overall, the northern filaments (F1–F4) appear visually more collimated than the southern ones (F6–F8). As outlined below, the two filament groups also differ in their physical properties. The more widespread  $\text{C}^{18}\text{O}$  emission close to the central region in the velocity range  $10.2\text{--}8.9 \text{ km s}^{-1}$  can be interpreted as filaments seen head-on.

For all filaments, we determined the velocity gradient relative to the observer,  $\Delta v_{\text{grad}}$ , from the channel map in order to derive dynamical lifetimes and infall rates. We assume a random

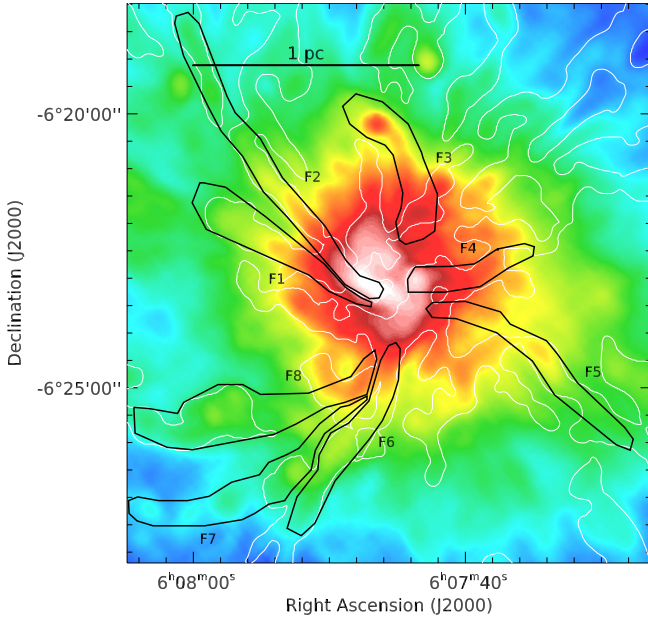




**Fig. 5.** Channel map of  $\text{C}^{18}\text{O } 2 \rightarrow 1$  emission. Black contours ( $2.5\text{--}7 \text{ K km s}^{-1}$  by  $0.5 \text{ K km s}^{-1}$ ) are overlaid on the *Herschel* column density map in colour (Fig. 3). Filaments identified in the  $\text{C}^{18}\text{O}$  and in the *Herschel* map are classified F1–F8 and traced in grey.

distribution of orientation angles and thus an average angle to the line-of-sight of  $57.3^\circ$  (Schneider et al. 2010) meaning that the dynamical lifetime  $t_l$  of the filament is calculated as  $t_l = l/(\Delta v_{\text{grad}} \tan(57.3))$ . The infall rate  $\dot{M}$  is then  $\dot{M} = M/t_l$  with the mass  $M$  obtained from the *Herschel* maps. For the mass estimate,

we defined polygons around the filament skeletons identified in the  $\text{C}^{18}\text{O}$  map and approximately following the filaments seen on the column density map, with similar widths ( $\sim 25''$ , or  $\sim 0.1 \text{ pc}$ ). These are shown in Fig. 6. The background around the filaments is highly variable, ranging from  $\sim 10^{21} \text{ cm}^{-2}$  over most of the



**Fig. 6.** Colour map of the *Herschel* column density (Fig. 3), overlaid with polygons (F1–F8) indicating the areas over which the filament properties (average column density, density, temperature, and total mass) were determined. The white contours show the filaments identified by *getsources* in the column density map.

region to over  $4 \times 10^{22} \text{ cm}^{-2}$  at the central hub, approximately 50% of the column density values measured over the filaments. Since the majority of the mass in the filaments comes from the central hub, this suggests that a reasonable lower limit for the masses is 50% of the total measured value (which was used as the upper limit). As this is an estimate, no further background subtraction was performed. From this point, the upper limit value is used.

We also estimated the average column density  $N$ , the average density  $n$ , the mass per unit length  $M_l$ , and the average dust temperature  $T$  from the *Herschel* data. The critical mass per unit length  $M_{l,\text{crit}}$  above which filaments become gravitationally unstable (Arzoumanian et al. 2011) was determined following Ostriker (1964):

$$M_{l,\text{crit}} = \frac{2c_s^2}{G} = 1.67 T [M_\odot \text{ pc}^{-1}]. \quad (3)$$

For the sound speed  $c_s$  we assume isothermal gas (of temperature  $T$ ) where the ideal gas equation of state holds and thus  $c_s = \sqrt{kT/\mu}$  with the Boltzmann constant  $k$  and the mean molecular weight per free gas particle  $\mu = 2.33$  (accounting for 10% He and trace metals).

The physical properties of the filaments are reported in Table 2. The masses of the filaments range between 26 and  $114 M_\odot$  per parsec, and are thus a factor of  $\sim 10$  less massive (though only a factor of 2 shorter) than the filaments linked to the DR 21 ridge ( $100\text{--}3700 M_\odot \text{ pc}^{-1}$ ; Schneider et al. 2010; Hennemann et al. 2012) and a factor of  $\sim 3$  less massive than the Serpens South filament ( $62\text{--}290 M_\odot \text{ pc}^{-1}$ ; Hill et al. 2012; Kirk et al. 2013a), but of a similar mass per unit length to many other regions' filaments ( $\sim 20\text{--}100 M_\odot \text{ pc}^{-1}$ , in regions as diverse as Aquila, Polaris, and IC 5146; André et al. 2014).

The filaments fall onto central hub, which, with a mass of  $\sim 1000 M_\odot$ , is many times more massive than even the most massive of the filaments. The average temperature within the filaments ranges between 15 and 19.5 K. The southern filaments

F6, F7, and F8 are colder (around 15 K) than the northern ones (around 19 K). All upper limit masses for the filaments are supercritical ( $M_l > M_{l,\text{crit}}$ ) and thus gravitationally unstable and only three of the eight filaments have subcritical lower-limit masses.

Assuming that the full velocity gradient corresponds to in-fall, the dynamic lifetimes of the filaments are short, between  $1.6$  and  $5.6 \times 10^5$  yr, and the mass infall rates range between  $0.5$  and  $3.25 \times 10^{-4} M_\odot/\text{yr}$ . The southern filaments have lower infall rates than the northern ones. If a constant average infall rate of  $1.4 \times 10^{-3} M_\odot/\text{yr}$  over time is assumed, it takes  $\sim 0.7 \times 10^6$  yr to build up a central hub of  $1000 M_\odot$ , the current mass of the central region. Using the lower-limit mass values, this value would be approximately doubled, to  $\sim 1.4 \times 10^6$  yr. This is of course a rough estimate and the timescale is probably lower because we consider only a few prominent filaments, mostly oriented in the plane of the sky, and ignore all head-on ones and fainter filaments. Nevertheless, a value of about  $10^6$  yr indicates that the formation of ridges and hubs starts already at a very early phase during molecular cloud formation. This is consistent with a scenario in which these massive regions are formed out of initially atomic flows that quickly transform into filaments, which then supply the mass by means of gravitational contraction onto the hub (Heitsch 2013a,b).

## 6. Source detection and classification

The source detection and classification process was carried out according to the standard procedures of the HOBYS group, as outlined in Tigé et al. (2017). To identify the positions of compact objects, we used the *getsources* routine (version 1.140127; Men'shchikov et al. 2012; Men'shchikov 2013) which uses maps at all *Herschel* wavelengths simultaneously. An account of the workings of this routine is given in Appendix B. The observed maps input to the routine were the five *Herschel* maps ( $70 \mu\text{m}$ ,  $160 \mu\text{m}$ ,  $250 \mu\text{m}$ ,  $350 \mu\text{m}$ , and  $500 \mu\text{m}$ ) and two ancillary maps (MIPS  $24 \mu\text{m}$  and SCUBA-2  $850 \mu\text{m}$ ). Three derived maps are also used as input to *getsources*: the high-resolution column density map ( $\tilde{\Sigma}$ ), and two others, versions of the  $160 \mu\text{m}$  and  $250 \mu\text{m}$  maps corrected for the effects of temperature. These are created by using the colour-temperature map,  $T_{250}$ , to remove the effects of temperature from the  $160 \mu\text{m}$  and  $250 \mu\text{m}$  maps (these maps are used for detection in place of the observed  $160 \mu\text{m}$  and  $250 \mu\text{m}$  maps, but measurements are only taken from the original maps). We note that neither the  $24 \mu\text{m}$  nor the  $850 \mu\text{m}$  maps were used for detection, since the former contains many sources that are not seen at longer wavelengths, which could add unwanted MIR sources to the output catalogue, and the latter is noisy due to atmospheric effects, which could cause errors in position measurement.

To test the completeness of *getsources* in Mon R2, we injected additional synthetic sources into the maps, and the routine was run again on these source-injected maps. The *getsources* extraction was performed identically to the extraction described above, even including the column density and temperature-corrected maps. This test suggested that  $\sim 70\%$  of sources over  $1 M_\odot$  would have been detected. Five further extractions were performed on the central hub alone; in each extraction only a small number of sources was added so as not to increase the crowding in the region too much. This test suggested that, within the central hub, only  $\sim 33\%$  of sources over  $1 M_\odot$  would have been detected. More details of the completeness test are given in Appendix C.

In the Mon R2 region, *getsources* detected 555 sources, but even though these were all detected to a (detection)



**Table 2.** Properties of the filaments F1–F8.

Fila- ment	Mass ( $M_{\odot}$ )	$\langle N \rangle$ ( $10^{21} \text{ cm}^{-2}$ )	$\langle n \rangle$ ( $10^4 \text{ cm}^{-3}$ )	$\langle T \rangle$ (K)	$l$ (pc)	$M_l$ ( $M_{\odot}/\text{pc}$ )	$M_{l,\text{crit}}$ ( $M_{\odot}/\text{pc}$ )	$\Delta v_{\text{grad}}$ ( $\text{km s}^{-1}$ )	$t_l$ ( $10^5 \text{ yr}$ )	$\dot{M}$ ( $10^{-4} M_{\odot}/\text{yr}$ )
F1	24–48	22	2.7	18 (1.9)	0.77	31–62	31	2.1	2.3	2.1
F2	37–73	21	1.7	19 (2.9)	1.6	24–47	31	2.6	3.7	2.0
F3	33–66	29	3.4	18 (1.6)	0.58	55–110	30	1.4	2.6	2.5
F4	26–52	44	5.1	20 (1.3)	0.55	48–95	33	2.2	1.6	3.3
F5	16–32	17	2.8	19 (0.6)	0.78	21–41	31	1.3	3.8	0.8
F6	24–48	23	2.9	16 (1.0)	0.75	32–64	26	1.5	3.1	1.6
F7	16–31	12	1.3	15 (0.4)	1.2	13–26	25	1.3	5.6	0.5
F8	29–58	16	1.3	16 (0.7)	1.1	27–53	27	1.7	4.0	1.4

**Notes.** Columns are: total mass within the polygon defining the filament from *Herschel*  $\text{H}_2$  column density map (both lower and upper limit are given);  $\langle N \rangle$ , mean column density from *Herschel*;  $\langle n \rangle$ , mean  $\text{H}_2$  density derived from  $N/r$  with the beam deconvolved equivalent radius  $r = \sqrt{(\text{area})/\pi}$ ;  $\langle T \rangle$ , mean temperature;  $l$ , projected length;  $M_l$ , mass/length value from  $M/l$  given in Cols. 2 and 6 (both lower and upper limit are given);  $M_{l,\text{crit}}$ , critical mass/length derived from Eq. (3);  $\Delta v_{\text{grad}}$ , velocity gradient of the filament estimated from the  $\text{C}^{18}\text{O}$  channel map, relative to the observer;  $t_l$ , dynamical lifetime;  $\dot{M}$ , mass infall rate.

signal-to-noise level of  $5\sigma$ , only the most robust sources (as described below, and in Tigé et al. 2017) are counted in the final catalogue. First, sources were removed from the *getsources* catalogue if they were at the edge of the map. In addition, each wavelength detection for each source was designated “reliable” if its peak intensity (measurement) signal-to-noise ratio and its total flux density (measurement) signal-to-noise ratio were both over two, and its axis ratio was under two. Sources were removed from the catalogue if they did not have reliable measurements at either  $160 \mu\text{m}$  or  $250 \mu\text{m}$ . In order to find a single value for the “size” of the sources, the geometric mean of the measured major and minor FWHM sizes was found for each wavelength. These values were then deconvolved with the wavelengths’ beam sizes, with a minimum value set to half the beam size. The reference size ( $\Theta$ ) was defined as the smaller of the deconvolved sizes at  $160 \mu\text{m}$  and  $250 \mu\text{m}$ , in the case where both wavelengths had reliable detections, or the size at the reliable wavelength (out of  $160 \mu\text{m}$  and  $250 \mu\text{m}$ ), in the case where only one of the two was reliable.

Sources were treated as “robust” if they had reliable detections at three wavelengths over  $100 \mu\text{m}$  (one of which, as mentioned above, had to be at either  $160 \mu\text{m}$  or  $250 \mu\text{m}$ ). Finally, sources were removed due to poor SED fits, and due to being likely extraction artefacts (both described in more detail below), leaving 177 “robust” sources. For the remainder of the paper, only these robust sources are considered.

From the measured flux densities, the spectral energy distribution (SED) of each robust source can be constructed. The SED is assumed to fit a greybody with the following form (Chapin et al. 2008):

$$F_{\nu} = M_c \frac{\kappa_0}{R D^2} \left( \frac{\nu}{\nu_0} \right)^{\beta} B_{\nu}(T), \quad (4)$$

where  $F_{\nu}$  is the observed flux density (here and elsewhere in this paper) at frequency  $\nu$ ;  $M_c$  is the source gas mass;  $\kappa_0$  is the dust absorption coefficient, measured at a reference frequency  $\nu_0$ ;  $R$  is the assumed mass ratio of gas to dust in the cloud;  $\beta$  is the dust emissivity index; and  $B_{\nu}(T)$  is the Planck function, with temperature  $T$ . Although  $\beta$ ,  $R$  and  $\kappa_0$  are subject to significant uncertainties, there exist common approximations based on measurements made in the literature. It has been suggested that the emissivity index,  $\beta$ , varies between 1 for higher frequencies (wavelengths below  $250 \mu\text{m}$ ) and 2 for

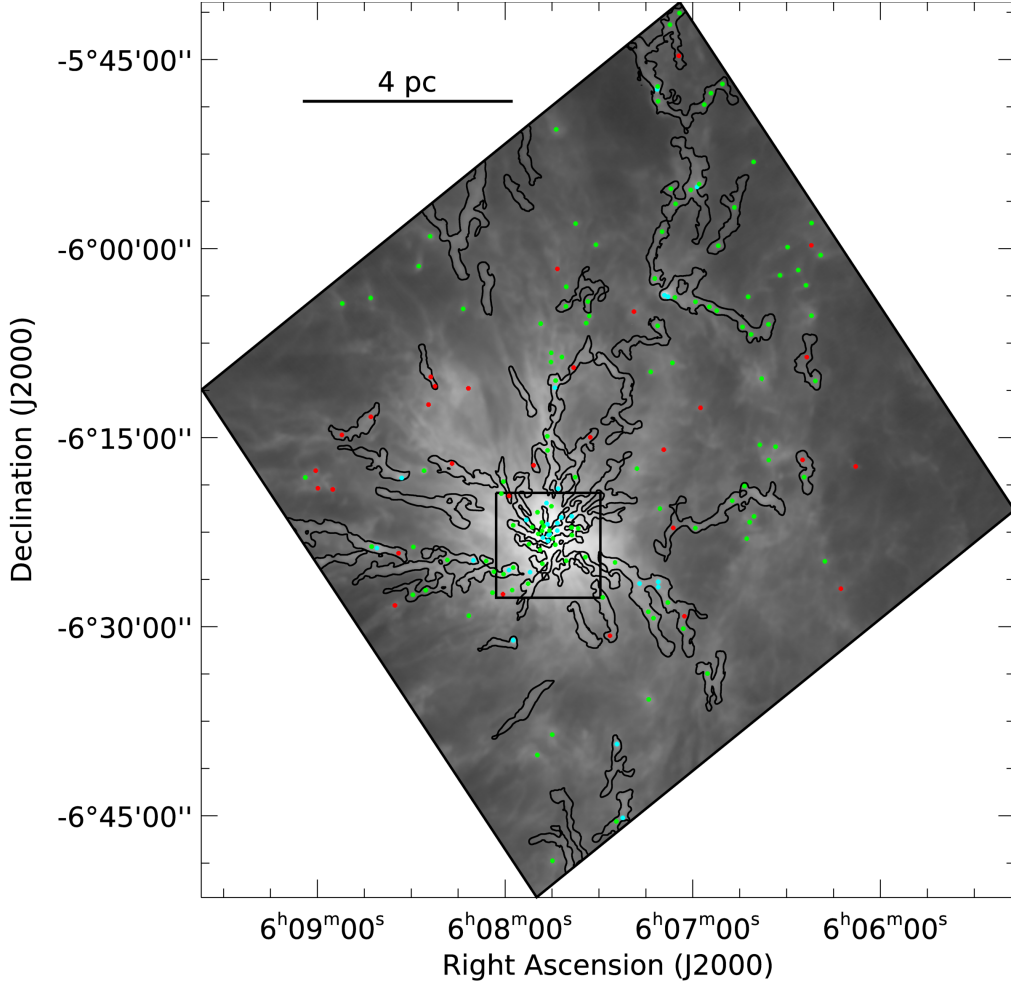
lower frequencies (above  $250 \mu\text{m}$ ; Hildebrand 1983); a value of  $\beta = 2$  is generally used in *Herschel* SAG3<sup>4</sup> papers (including Motte et al. 2010; Hennemann et al. 2010; Könyves et al. 2010; Giannini et al. 2012). The gas-to-dust ratio is generally taken to be  $R = 100$  (Beckwith et al. 1990), or in other words, the dust is assumed to make up about 1% of the cloud by mass. The absorption coefficient,  $\kappa_0$ , is set to  $10 \text{ cm}^2 \text{ g}^{-1}$  (or  $0.1 \text{ cm}^2 \text{ g}^{-1}$  when divided by the gas-to-dust ratio) at a reference frequency of 1 THz (or a wavelength of  $300 \mu\text{m}$ ); this has been found to have an accuracy of better than 50% over column densities between  $3 \times 10^{21} \text{ cm}^{-2}$  and  $10^{23} \text{ cm}^{-2}$  (Roy et al. 2014). The distance to Mon R2, 830 pc, is discussed in Sect. 3.1. Based on these assumptions, the source’s mass and temperature can be found from the best SED fit (in this case, using the MPFIT routine; Markwardt 2009).

Before the SED can be fit, there is another correction that needs to be made. The total fluxes for wavelengths of  $160 \mu\text{m}$  or greater are scaled for the source size (since the fluxes were measured over variable apertures), so that:

$$F_{\nu\text{sca}} = F_{\nu} \left( \frac{\Theta}{\Theta_{\nu}} \right), \quad (5)$$

where  $\Theta_{\nu}$  is the deconvolved FWHM at frequency  $\nu$ . This flux scaling process is introduced in Motte et al. (2010) and explained in more detail in Nguyen Luong et al. (2011). It should be noted that the flux scaling is merely an estimate, and does not account for more complex internal core structure (such as subfragmentation or density flattening). It is also a practical/empirical approach, and while it does generally give better-fitting SEDs, it is likely to increase the uncertainty of the values. In order to provide a test for flux scaling, SEDs were also constructed using flux measured by aperture photometry on maps convolved to the  $500 \mu\text{m}$  resolution ( $36.4''$ ). The rms of the relative difference between the mass calculated by this method and the mass calculated using flux scaling was found to be 1.17 (strictly, the rms of  $(M - M_{\text{conv}})/M$ , where  $M$  is the mass calculated by flux scaling, and  $M_{\text{conv}}$  is the mass calculated using the convolved fluxes; the fluxes used and masses measured are provided in the catalogue files). This suggests that an error of  $\sim 20\%$  should be applied to the masses, in addition to the mass errors calculated purely from the fitting routine (the error due

<sup>4</sup> A SPIRE Consortium Specialist Astronomy Group which implemented the HOBYS and *Herschel* Gould Belt surveys.



**Fig. 7.** Monoceros R2 sources, on the  $250\ \mu\text{m}$  flux map (Fig. A.3). The *getfilaments* map is overlaid as black contours (strictly, these are the filaments detected on the column density map at scales below  $72''$ ). The contours are those from Fig. 3 ( $\text{H}_2$  column densities  $3 \times 10^{21}\ \text{cm}^{-2}$  and  $1.5 \times 10^{22}\ \text{cm}^{-2}$ ). A zoom-in of the region in the red box (the central hub) is shown in Fig. 8. The points are protostars (blue), bound cores (green), and unbound clumps (red); see text for details.

to the fit alone is given in the catalogue as  $M_{\text{err,fit}}$ , and the 15% systematic uncertainty from the distance measurements. We note that colour corrections were not performed, as any correction applied would be smaller than the uncertainties likely introduced by flux scaling.

For the SED fitting, all reliable detections (as defined earlier) above  $100\ \mu\text{m}$  are included in the fit. The errors on each wavelength are the total flux error, as measured by *getsources*, summed in quadrature to the instrumental and calibration errors (10% of the flux for all bands). Wavelengths that are not reliable due to the source shape are included as “ $1\sigma$  upper-limits”, meaning that the error is set equal to the flux itself; meanwhile, wavelengths that are not reliable due to having flux below  $2\sigma$  have the flux itself (along with the errors) set to the  $2\sigma$  value. The  $70\ \mu\text{m}$  data are fit only to those sources that show a temperature of over 32 K when fit without it. This is necessary, since such SEDs are poorly described by wavelengths of  $160\ \mu\text{m}$  and above alone. As mentioned above, fits (both including and excluding  $70\ \mu\text{m}$ ) with reduced  $\chi^2$  values above 10 are also excluded from the final catalogue, since the fits (and thus output parameters) provided are dubious (only about 10% of the total number removed were cut due to this requirement alone). It should be noted that the  $24\ \mu\text{m}$  flux is only used to calculate the luminosity, and takes no part in the SED determination.

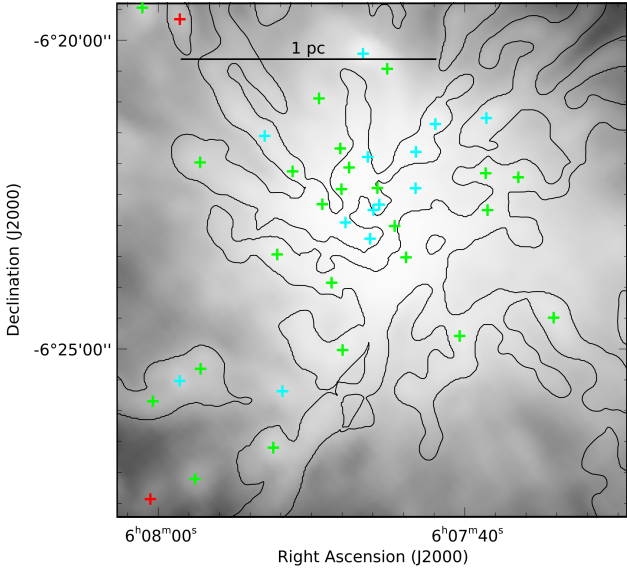
In addition to the *getsources* fluxes, WISE all-sky catalogue data are used to provide mid-infrared coverage for luminosity calculation. All WISE sources within  $6''$  of the centre of the detected *Herschel* source are assumed to contribute. The mid-infrared luminosity is derived by calculating the integral of the WISE fluxes, the  $24\ \mu\text{m}$  flux and the  $70\ \mu\text{m}$  flux. The far-infrared luminosity is the integral of the SED between  $70\ \mu\text{m}$  and  $1200\ \mu\text{m}$ .

Sources are classified as protostars if they have both a reliable detection at  $70\ \mu\text{m}$  and either a reliable detection at  $24\ \mu\text{m}$ , or are present in the WISE catalogue (the second requirement was lifted for sources in the central region, as the  $24\ \mu\text{m}$  MIPS data and two of the four WISE bands are saturated here). In addition, the source FWHM at  $70\ \mu\text{m}$  is required to be under  $11.6''$  (twice the  $70\ \mu\text{m}$  beam size). A non-protostellar (or starless) source is classified as gravitationally bound if its reference size ( $\Theta$ ) is less than twice its Bonnor radius (the radius of a critically dense Bonnor-Ebert sphere with the same mass and temperature), which is given by:

$$R_B = \frac{GM_c m_{\text{H}_2}}{2.4k_B T}, \quad (6)$$

where  $G$  and  $k_B$  are the gravitational and Boltzmann constants and  $m_{\text{H}_2}$  is the average molecular mass (Bonnor 1956). All other





**Fig. 8.** Zoom in on the central hub region of Fig. 7. The contour shows the filaments as detected by *getsources* on the column density map.

robust sources were classified as either gravitationally unbound or “undefined cloud structures” (Tigé et al. 2017), a designation for objects detected by *getsources*, but not associated with either a protostar or a peak in column density. These are potentially artefacts of the extraction, especially given that they are generally associated with the most crowded parts of the region. Consequently, these objects are not included in the catalogue or the analysis.

The positions of these sources are shown in Fig. 7, overlaid on a filament map taken from *getsources* (strictly, this is the map of filaments detected at scales under  $72''$ , or  $0.3$  pc, on the column density map). As can be seen, the majority (60%, or 109 out of 177) of sources are coincident with the *getsources* filaments. In addition, the sources are mainly clustered around the central hub (as shown in Fig. 8), with 29 robust sources detected there (80%, or 23 of them, on *getsources* filaments).

The basic parameters of the overall source dataset (temperature, mass, bolometric luminosity, and reference size) are given in Table 3. We note that not all of the bound cores are likely to be true prestellar cores; although such objects could be detected separately at this distance (the  $160\ \mu\text{m}$  resolution is  $\sim 0.05$  pc at Mon R2, while prestellar cores have sizes of  $0.1$ – $0.2$  pc; Roy et al. 2014), the larger bound cores are potentially clusters of several prestellar cores. These are likely to be on the path to star formation.

As can be seen from Table 3, those sources in the central hub (defined here by the N-PDF excess from Schneider et al. 2015, which is equivalent to column densities above  $3.5 \times 10^{22}\ \text{cm}^{-2}$ ) are both hotter and more luminous than those outside. There appears to be a difference in the mass ranges, too, with the more massive sources found in the hub. This effect is partly due to the high completeness limit of *getsources* in the hub region (see Appendix C), which could only reliably detect a third of sources above  $1 M_{\odot}$  due to the high crowding and confusion.

One single source (HOBYS J060740.3 –062447) has a mass above  $20 M_{\odot}$ , and is thus potentially a true high-mass star in formation. At the edge of the hub region, it is associated with the young star 2MASS J06074062–0624410, and appears to overlap with the western H II region (although this may be a projection effect). A further eleven sources have masses over  $10 M_{\odot}$ ,

meaning that they are potentially intermediate-mass stars (final mass  $\geq 5 M_{\odot}$ ) in formation. Four of these sources are larger objects in the outer parts of the region. While they are all massive enough to be gravitationally bound, none are particularly dense, with densities of  $2.2 \times 10^3$ – $6.0 \times 10^4\ \text{cm}^{-3}$  (for comparison, the density of HOBYS J060740.3 –062447 is  $9.0 \times 10^5\ \text{cm}^{-3}$ ). The remaining seven sources are (like HOBYS J060740.3 –062447) within (or close to) the  $\geq 3.5 \times 10^{22}\ \text{cm}^{-2}$  column density hub, and include HOBYS J060746.1 –062312, which is associated with Mon R2 IRS 1. These objects are mainly bound dense cores, with densities of  $6.2 \times 10^4$ – $2.1 \times 10^6\ \text{cm}^{-3}$ . The properties of these sources are given in the lowest rows of Table 3, and the individual properties are given in the tables in Appendix D (measured properties) and Table 4 (derived properties).

Looking at total masses, we can see that the sources in the central hub (total mass  $\sim 220 M_{\odot}$ ) make up about half of the mass of sources in the region (total mass  $\sim 580 M_{\odot}$ ), even though they account for less than a quarter by number. Taking completeness into account, we find an even greater discrepancy, with potentially  $620 M_{\odot}$  in central hub sources, two thirds the completeness-corrected mass of all sources in the region ( $980 M_{\odot}$ ). From the column density map, we can see that the total masses of material in the regions are approximately  $2200 M_{\odot}$  (central) and  $30\,000 M_{\odot}$  (total), meaning that 10–30% of the central region is associated with star-forming cores, compared to only 2–4% of the total region. Such behaviour has been seen in other high density regions, including the W43 ridge (Louvet et al. 2014).

## 7. Source properties in and outside the central hub

Contrasting the parameters of the sources inside the central hub with those outside it, a difference can be seen. Plots of bolometric luminosity and reference size against mass are shown in Figs. 9 and 10, respectively, and they show that the central hub sources (filled shapes) are generally smaller, more luminous, and potentially even more massive than those outside the hub, occupying distinct locations on each plot (masses over  $\sim 2 M_{\odot}$ ; luminosities over  $\sim 10 L_{\odot}$ ; reference size under  $\sim 0.04$  pc). The luminosity-mass plot shows evolutionary tracks for four protostars of final protostellar mass ( $M$ )  $0.6 M_{\odot}$ ,  $2 M_{\odot}$ ,  $8 M_{\odot}$ , and  $20 M_{\odot}$  (from Duarte-Cabral et al. 2013; Duarte-Cabral, priv. comm.), in which  $L_{\text{bol}} = L_{*} + G\epsilon MM_{*}/\tau R_{*}$ , where:  $L_{*}$ ,  $M_{*}$ , and  $R_{*}$  are the luminosity, mass, and radius of the protostar itself;  $G$  is the gravitational constant;  $\epsilon$  is the efficiency for an individual core’s formation (the fraction of the core that eventually joins the protostar), set to 50%; and  $\tau$  is the characteristic timescale for protostellar evolution, set to  $10^5$  yr (André et al. 2008; Tigé et al. 2017).

The objects from the central hub seem to be segregated from those in other parts of the region, with the inner objects generally located above the  $2 M_{\odot}$  evolutionary track, and the majority of outer objects located below the track. In addition, those outer objects above  $2 M_{\odot}$  appear to show a segregation based on evolutionary level, with the inner objects being exclusively located at the start of the tracks. This suggests that these objects form a secondary population within the region, one that potentially began evolution significantly earlier than those outside the hub. This is in contrast to what was seen in Cygnus X (Duarte-Cabral et al. 2013), in which the massive objects are far less evolved than the lower-mass objects, suggesting that for the Cygnus X region, at least, the massive star formation occurring is comparatively more recent than in Mon R2. The different types of objects found outside the central hub (protostellar, bound, or

**Table 3.** Numbers ( $N$ ) and parameter ranges for all robust sources.

Sources	$N$	$\langle T_d \rangle$ (K)	$\mu$	$\sigma$	Mass ( $M_\odot$ )	$\mu$	$\sigma$	$L_{\text{bol}}$ ( $L_\odot$ )	$\mu$	$\sigma$	$R_{\text{dec}}$ (pc)	$\mu$	$\sigma$
Robust	177 (440)	9.0–39	15	5.4	0.084–24	3.1	3.7	0.058–5000	67	430	0.023–0.30	0.074	0.052
(Hub)	29 (145)	12–39	22	8.0	1.5–24	6.9	5.9	3.5–5000	400	1000	0.023–0.099	0.033	0.015
Protostellar	28 (50)	13–39	21	7.5	0.36–16	2.2	3.1	0.42–5000	350	1000	0.023–0.038	0.026	0.0051
(Hub)	11 (35)	17–39	27	7.5	1.5–16	4.3	4.3	6–5000	890	1600	0.023–0.035	0.026	0.0049
Bound	118 (200)	9.0–33	13	4.0	0.46–24	3.9	3.9	0.058–520	16	66	0.023–0.30	0.085	0.055
(Hub)	18 (80)	12–33	19	6.7	1.7–24	8.5	6.3	3.5–520	99	150	0.023–0.099	0.037	0.018
Unbound	31 (390)	11–25	16	3.1	0.084–1.4	0.56	0.33	0.13–4.6	0.99	1.0	0.036–0.18	0.080	0.037
$M > 10 M_\odot$	11	9.8–32	15	6.3	11–24	14	3.8	0.92–5000	470	1500	0.029–0.26	0.077	0.069
(Hub)	8	12–32	16	6.8	11–24	15	4.0	3.5–5000	650	1800	0.029–0.099	0.047	0.022

**Notes.** The table also gives the numbers for the three individual types of source (described in the text), both in total, and within the central hub (those rows indicated by “(Hub)”). The number in parentheses is an estimate of the true number of sources, based on the completeness calculations (Appendix C). The lowest two rows give the ranges for sources with masses over  $10 M_\odot$ ; due to the small number of such model sources in the completeness calculations, no estimate for the true number is given. The parameter range mean values ( $\mu$ ) and standard deviations ( $\sigma$ ) are also given. No unbound sources were detected in the central hub.

**Table 4.** Derived core properties.

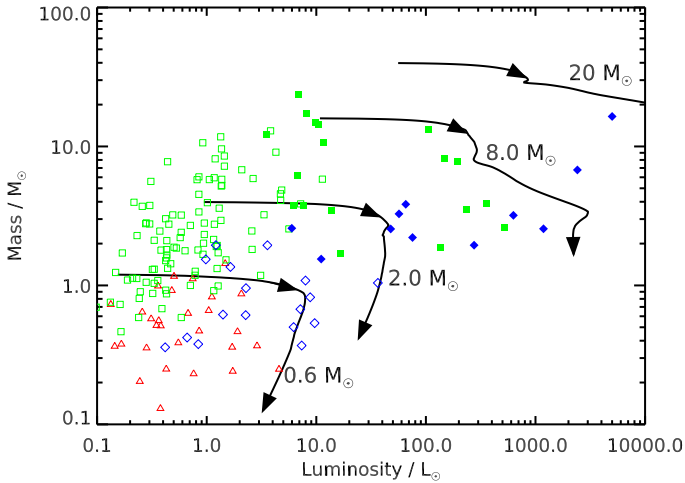
#	$T \pm \sigma_T$ (K)	$M \pm \sigma_M$ ( $M_\odot$ )	$L_{\text{bol}}$ ( $L_\odot$ )	$R_{\text{dec}}$ (pc)	$\langle n_{\text{H}_2} \rangle$ ( $\times 10^3 \text{ cm}^{-3}$ )	Core type	SIMBAD name
1	$12.0 \pm 0.8$	$24 \pm 9$	6.8	0.045	7100	Bound dense core*	2MASS J06074062 – 0624410 <sup>a</sup>
2	$13 \pm 2$	$17 \pm 10$	8.1	0.045	5200	Bound dense core	2MASS J06073823 – 0622411 <sup>a</sup>
3	$32 \pm 1$	$16 \pm 4$	5000	0.029	18 000	Protostar	Mon R2 IRS 1 <sup>b</sup>
4	$14 \pm 1$	$15 \pm 6$	9.8	0.036	8500	Bound dense core	
5	$14 \pm 1$	$14 \pm 6$	11	0.037	8000	Bound dense core*	
6	$20 \pm 2$	$13 \pm 5$	100	0.035	8600	Bound dense core*	
7	$12 \pm 1$	$13 \pm 5$	3.8	0.090	480	Bound dense core	Mon R2 4 <sup>c</sup>
8	$12 \pm 2$	$12 \pm 8$	3.5	0.099	340	Bound dense core*	2MASS J06075740 – 0622103 <sup>a</sup>
9	$10.3 \pm 0.8$	$12 \pm 4$	1.3	0.265	17	Bound dense core	
10	$15 \pm 1$	$11 \pm 4$	12	0.047	2800	Bound dense core	JCMSTF J060747.9 – 062502 <sup>d</sup>
11	$9.8 \pm 0.5$	$11 \pm 4$	0.92	0.115	190	Bound dense core	

**Notes.** Columns are: temperature,  $T$ , and source mass,  $M$ , both with errors,  $\sigma$ , bolometric luminosity,  $L$ , reference size ( $R_{\text{dec}}$ ), and mean density,  $\langle n_{\text{H}_2} \rangle$ . Also, the table has the most likely core type for the object, whether protostellar, bound starless, or unbound (see Sect. 6), and a potential identity, from comparisons with other observations of the region. We note that the mass errors given here are solely from the SED fit, and do not include the 25% errors from flux-scaling and distance estimates. Source references: <sup>(a)</sup> Cutri et al. (2003); <sup>(b)</sup> Beckwith et al. (1976); <sup>(c)</sup> Gutermuth et al. (2009); <sup>(d)</sup> Di Francesco et al. (2008). The full catalogue also references Tafalla et al. (1997), Hodapp (2007), and Condon et al. (1998).

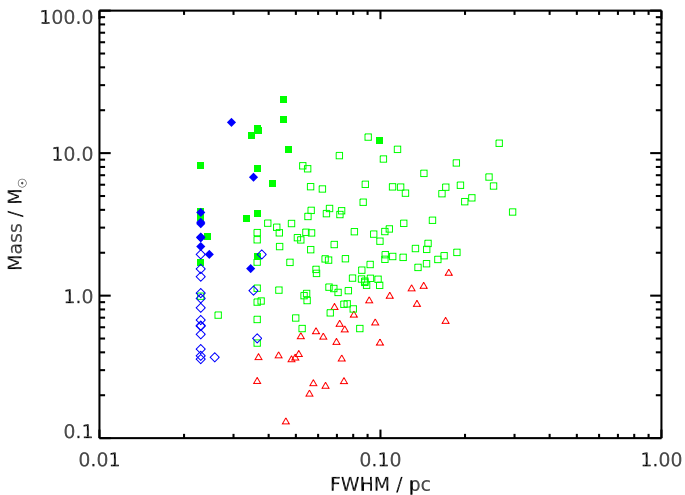
unbound) all occupy distinct positions in the two plots (albeit with some overlap); those inside show no such differentiation. Similarly, the size-mass positions show a distinction between the hub sources (small and massive) and the outer sources, which can have similar masses, but only with much lower densities.

It should be noted that the tracks represent the evolution of objects heated only from within; the externally heated bound cores in the central hub are likely to be higher up the tracks than they would be in isolation. While this could affect the positions of such sources in Fig. 9, it does not explain their small size and high mass, as seen in Fig. 10. This positioning can be partially explained by the high completeness limit of the central hub (see Appendix C), as less massive, less luminous, and larger sources within the central hub will be missed simply due to the complexity of the region. The number of sources missed in the central hub (66% above  $1 M_\odot$  and 80% above  $0.1 M_\odot$ ;

likely over a hundred in total) could certainly explain the absence of central hub sources in the high-size, low-mass and low-luminosity parts of the plots. The poor completeness of the central hub does not, however, explain the absence of “outer” sources (sources from outside the hub in the low-size, high-mass and high-luminosity parts of the plots; indeed, the completeness tests suggest that 90% of sources under 0.035 pc and over  $1 M_\odot$  have been detected in the outer regions. Only four such sources have been found outside the central hub ( $\sim 3\%$ ), while eighteen of the central hub sources ( $\sim 62\%$ ) fit these parameters. If the ratios were equivalent, then over 500 extra sources over  $0.1 M_\odot$  would be needed in the central hub, rather than the 150 suggested by the completeness analysis. This at the very least suggests that the central hub of Mon R2 has an abundance of these objects when compared to the surroundings, and that the source populations are indeed different. Such crowding of high-mass



**Fig. 9.** Bolometric luminosity-mass plot for robust sources in Mon R2. The coloured symbols represent protostars (blue diamonds), bound cores (green squares), and unbound clumps (red triangles). Filled shapes are sources within the central hub. The black lines represent evolutionary tracks for protostars with final protostellar masses of  $0.6 M_{\odot}$ ,  $2 M_{\odot}$ ,  $8 M_{\odot}$ , and  $20 M_{\odot}$  (described in Sect. 7).



**Fig. 10.** Mon R2 plot of mass against reference size (full width at half maximum at either  $160 \mu\text{m}$  or  $250 \mu\text{m}$ ; defined in Sect. 6). As for Fig. 9. The two lines of protostellar (blue) sources are at half the  $160 \mu\text{m}$  and  $250 \mu\text{m}$  beam sizes ( $5.7''$  and  $9.1''$ , respectively, corresponding to sizes  $0.023 \text{ pc}$  and  $0.037 \text{ pc}$ ), which were taken as the minimum source sizes (see Sect. 6 for more details).

protostars has also been observed in HOBYS ridges (Hill et al. 2011; Nguyen Luong et al. 2011; Louvet et al. 2014).

These features suggest a region in which star formation initially begins at the meeting-point of a network of filaments (the hub), and commences in the outer regions at a later time. It is also possible that the star-formation occurring in the central hub is fuelled by material from the filaments themselves, which would in turn partially deplete star-forming material in the surrounding areas making it harder for stars to form in surrounding regions. It is possible that the surrounding HII regions played a part in the formation of the central hub by providing external pressure to enhance the gravitational collapse, although it is unlikely to have played a major part (Didelon et al. 2015). The ionising stars of these three regions are young B types (BD-06 1415, B1; BD-06 1418, B2.5V; HD 42004, B1.5V; Racine 1968; Reed 2003) that are too evolved to be detected by

*Herschel* and *getsources*. Their probable masses ( $\sim 10 M_{\odot}$  for a B1–2 type star; Habets & Heintze 1981) would thus mean that at least some intermediate-to-high mass star formation must have occurred in the region prior to the formation of the hub, but the environment at the time of their forming is impossible to determine. The three stars are all at most  $\sim 2 \text{ pc}$  from the edge of the hub region (assuming minimal projection effects), which, given the age of the region ( $\sim 5 \times 10^6 \text{ yr}$  as determined here, which is of the same order of magnitude as that of Didelon et al. 2015,  $\sim 10^6 \text{ yr}$ ), could allow the stars to have begun forming in the vicinity of the hub, before moving to their current positions at velocities of no more than  $1 \text{ km s}^{-1}$ . Indeed, there is already a sizable population of young stars ( $\sim 1 \text{ Myr}$ ) already in existence at the Mon R2 central hub, with at least 300 stars (and likely over 500) detected over the entire hub (Carpenter et al. 1997) and almost 200 detected in the central square arcminute (approximately coincident with the HII region shown in Fig. 2; Andersen et al. 2006).

Mon R2 is an unusual, but not necessarily unique, region; as mentioned earlier, both Cep OB3 and NGC 6334 show similar N-PDF excesses (Schneider et al. 2015), as do W3 (Rivera-Ingraham et al. 2015), and NGC 2264 (Rayner 2015), the latter of which also showing a similar split in its source population, although without any obvious filamentary hub. While both W3 and NGC 6334 are more than twice as distant as Mon R2, and thus their internal structure (both sources and filaments) is significantly harder to resolve, both Cep OB3 and NGC 2264 are at similar distances to Mon R2, and thus follow-up studies on these two regions could help add to the observations from Mon R2. Other high-density ridges, such as those in W43 (Louvet et al. 2014) and Cygnus X (Hennemann et al. 2012) could also provide similar excesses, even though neither has been examined for the N-PDF excess. Cygnus X could thus provide another region for follow-up studies, although as W43 is more than six times as distant as Mon R2, it is unlikely to have sufficient resolution to rival Cep OB3 or NGC 2264.

## 8. Conclusions

In Mon R2, we detect 177 robust sources, including 28 protostars and 118 bound cores. About a sixth of these by number (29: 11 protostars and 18 bound cores) and a third by mass ( $200 M_{\odot}$ , out of  $540 M_{\odot}$ ) are found in a filamentary hub structure at the centre of the region. These sources are also smaller and more luminous (on average), and thus likely more highly evolved, than the sources in the outer regions, and while this is partly attributable to poor completeness in the central hub, this cannot account entirely for the difference.

In addition, the central hub was observed in  $\text{C}^{18}\text{O}$ , giving the kinematics of the system. Matter is observed to be moving along the filaments, with mass infall rates of  $\sim 2 \times 10^{-4} M_{\odot}/\text{yr}$ , indicating that the  $\sim 1000 M_{\odot}$  central hub has likely been forming for  $\sim 5 \times 10^6 \text{ yr}$ , a significant portion of the lifetime of the molecular cloud.

This all comes together to suggest a model in which the hub forms very early in the life of the molecular cloud (although it itself may have been formed by young stars forming around it), being fed by infall from filaments around it. It then began star formation in advance of the rest of the region, fuelled by the increased densities there. In addition, it is possible that material flowing into the hub from the filaments could decrease the amount of star formation in surrounding regions.



**Acknowledgements.** We are grateful for the comments of an anonymous referee, which have helped us to improve this paper. The *Herschel* spacecraft was designed, built, tested, and launched under a contract to ESA managed by the *Herschel/Planck* Project team by an industrial consortium under the overall responsibility of the prime contractor Thales Alenia Space (Cannes), and including Astrium (Friedrichshafen) responsible for the payload module and for system testing at spacecraft level, Thales Alenia Space (Turin) responsible for the service module, and Astrium (Toulouse) responsible for the telescope, with in excess of a hundred subcontractors. SPIRE has been developed by a consortium of institutes led by Cardiff Univ. (UK) and including Univ. Lethbridge (Canada); NAOC (PR China); CEA, LAM (France); IFSI, Univ. Padua (Italy); IAC (Spain); Stockholm Observatory (Sweden); Imperial College London, RAL, UCL-MSSL, UKATC, Univ. Sussex (UK); Caltech, JPL, NHSC, Univ. Colorado (USA). This development has been supported by national funding agencies: CSA (Canada); NAOC (PR China); CEA, CNES, CNRS (France); ASI (Italy); MCINN (Spain); SNSB (Sweden); STFC and UKSA (UK); and NASA (USA). PACS has been developed by a consortium of institutes led by MPE (Germany) and including UVIE (Austria); KUL, CSL, IMEC (Belgium); CEA, OAMP (France); MPIA (Germany); IFSI, OAP/AOT, OAA/CAISMI, LENS, SISSA (Italy); IAC (Spain). This development has been supported by the funding agencies BMVIT (Austria), ESA-PRODEX (Belgium), CEA/CNES (France), DLR (Germany), ASI (Italy), and CICT/MCT (Spain). HIPE is a joint development by the *Herschel* Science Ground Segment Consortium, consisting of ESA, the NASA *Herschel* Science Center, and the HIFI, PACS and SPIRE consortia. This work is based in part on observations made with the *Spitzer* Space Telescope, obtained from the NASA/IPAC Infrared Science Archive, both of which are operated by the Jet Propulsion Laboratory, California Institute of Technology under a contract with NASA. IRSA and the *Spitzer* Heritage Archive utilize technology developed for the Virtual Astronomical Observatory (VAO), funded by the National Science Foundation and NASA under Cooperative Agreement AST-0834235. The *James Clerk Maxwell* Telescope has historically been operated by the Joint Astronomy Centre on behalf of the Science and Technology Facilities Council of the United Kingdom, the National Research Council of Canada, and the Netherlands Organisation for Scientific Research. Additional funds for the construction of SCUBA-2 were provided by the Canada Foundation for Innovation. This research has made use of the SIMBAD database, operated at CDS, Strasbourg, France. This publication makes use of data products from the Wide-field Infrared Survey Explorer, which is a joint project of the University of California, Los Angeles, and the Jet Propulsion Laboratory/California Institute of Technology, and NEOWISE, which is a project of the Jet Propulsion Laboratory/California Institute of Technology. WISE and NEOWISE are funded by the National Aeronautics and Space Administration. N.S. acknowledges support by the ANR-11-BS56-010 project “STARFICH”. Part of this work was supported by the French National Agency for Research (ANR) project “PROBeS”, number ANR-08-BLAN-0241. N.S. acknowledges support by the DFG through project number Os 177/2-1 and 177/2-2 and central funds of the program 1573 (ISM-SPP). G.J.W. gratefully acknowledges support from the Leverhulme Trust. S.P.T.M. and A.F. thank the Spanish MINECO for funding support from grants AYA2012-32032, CSD2009-00038, FIS2012-32096, and ERC under ERC-2013-SyG, G. A. 610256 NANOCOSMOS. This work has received support from the ERC under the European Union’s Seventh Framework Programme (ERC Advanced Grant Agreements No. 291294 – “ORISTARS”).

## References

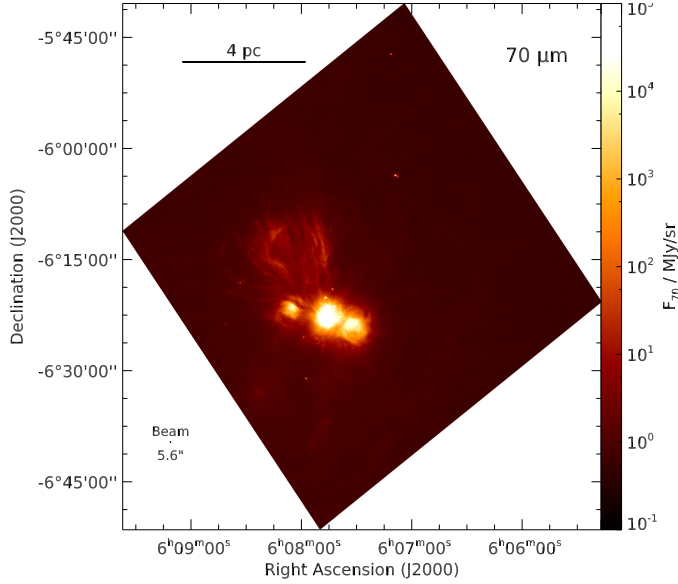
- Andersen, M., Meyer, M. R., Oppenheimer, B., Dougados, C., & Carpenter, J. 2006, *AJ*, **132**, 2296
- André, P., Minier, V., Gallais, P., et al. 2008, *A&A*, **490**, L27
- André, P., Men’shchikov, A., Bontemps, S., et al. 2010, *A&A*, **518**, L102
- André, P., Di Francesco, J., Ward-Thompson, D., et al. 2014, *Protostars and Planets VI*, 27
- Arzoumanian, D., André, P., Didelon, P., et al. 2011, *A&A*, **529**, L6
- Bally, J., & Lada, C. J. 1983, *ApJ*, **265**, 824
- Beckwith, S., Evans II, N. J., Becklin, E. E., & Neugebauer, G. 1976, *ApJ*, **208**, 390
- Beckwith, S. V. W., Sargent, A. I., Chini, R. S., & Güsten, R. 1990, *AJ*, **99**, 924
- Bendo, G. J., Griffin, M. J., Bock, J. J., et al. 2013, *MNRAS*, **433**, 3062
- Benedettini, M., Schisano, E., Pezzuto, S., et al. 2015, *MNRAS*, **453**, 2036
- Bernard, J.-P., Paradis, D., Marshall, D. J., et al. 2010, *A&A*, **518**, L88
- Bertin, A., Mellier, Y., Radovich, M., et al. 2002, in *Astronomical Data Analysis Software and Systems XI*, *ASP Conf. Ser.*, **281**, 228
- Bintley, D., Holland, W. S., MacIntosh, M. J., et al. 2014, in *SPIE Conf. Ser.*, **9153**, 3
- Bonnell, I. A., & Bate, M. R. 2006, *MNRAS*, **370**, 488
- Bonnor, W. B. 1956, *MNRAS*, **116**, 351
- Carpenter, J. M., Meyer, M. R., Dougados, C., Strom, S. E., & Hillenbrand, L. A. 1997, *AJ*, **114**, 198; Erratum: 1997, *AJ*, **114**, 1275
- Carter, M., Lazareff, B., Maier, D., et al. 2012, *A&A*, **538**, A89
- Chapin, E. L., Ade, P. A. R., Bock, J. J., et al. 2008, *ApJ*, **681**, 428
- Chapin, E. L., Berry, D. S., Gibb, A. G., et al. 2013, *MNRAS*, **430**, 2545
- Condon, J. J., Cotton, W. D., Greisen, E. W., et al. 1998, *AJ*, **115**, 1693
- Cutri, R. M., Skrutskie, M. F., van Dyk, S., et al. 2003, *VizieR Online Data Catalog*: II/246
- De Graauw, T., Helmich, F. P., Phillips, T. G., et al. 2010, *A&A*, **518**, L6
- Dempsey, J. T., Friberg, P., Jenness, T., et al. 2013, *MNRAS*, **430**, 2534
- Di Francesco, J., Johnstone, D., Kirk, H., MacKenzie, T., & Ledwosinska, E. 2008, *ApJS*, **175**, 277
- Didelon, P., Motte, F., Tremblin, P., et al. 2015, *A&A*, **584**, A4
- Dierickx, M., Jiménez-Serra, I., Rivilla, V. M., & Zhang, Q. 2015, *ApJ*, **803**, 89
- Duarte-Cabral, A., Bontemps, S., Motte, F., et al. 2013, *A&A*, **558**, A125
- Dzib, S. A., Ortiz-León, G. N., Loinard, L., et al. 2016, *ApJ*, **826**, 201
- Fallscheer, C., Reid, M. A., Di Francesco, J., et al. 2013, *ApJ*, **773**, 102
- Fazio, G. G., Hora, J. L., Allen, L. E., et al. 2004, *ApJS*, **154**, 10
- Fuente, A., Berné, O., Cernicharo, J., et al. 2010, *A&A*, **521**, L23
- Giannini, T., Elia, D., Lorenzetti, D., et al. 2012, *A&A*, **539**, A156
- Griffin, M. J., Abergel, A., Abreu, A., et al. 2010, *A&A*, **518**, L3
- Griffin, M. J., North, C. E., Schulz, B., et al. 2013, *MNRAS*, **434**, 992
- Gutermuth, R. A., Megeath, S. T., Myers, P. C., et al. 2009, *ApJS*, **184**, 18
- Habets, G. M. H. J., & Heintze, J. R. W. 1981, *A&AS*, **46**, 193
- Heitsch, F. 2013a, *ApJ*, **769**, 115
- Heitsch, F. 2013b, *ApJ*, **776**, 62
- Hennemann, M., Motte, F., Bontemps, S., et al. 2010, *A&A*, **518**, L84
- Hennemann, M., Motte, F., Schneider, N., et al. 2012, *A&A*, **543**, L3
- Herbst, W., & Racine, R. 1976, *AJ*, **81**, 840
- Hildebrand, R. H. 1983, *QJRAS*, **24**, 267
- Hill, T., Motte, F., Didelon, P., et al. 2011, *A&A*, **533**, A94
- Hill, T., André, P., Arzoumanian, D., et al. 2012, *A&A*, **548**, L6
- Hodapp, K. W. 1987, *A&A*, **172**, 304
- Hodapp, K. W. 2007, *AJ*, **134**, 2020
- Holland, W. S., Bintley, D., Chapin, E. L., et al. 2013, *MNRAS*, **430**, 2513
- Kirk, H., Myers, P. C., Bourke, T. L., et al. 2013a, *ApJ*, **766**, 115
- Kirk, J. M., Ward-Thompson, D., & Palmeirim, P. 2013b, *MNRAS*, **432**, 1424
- Könyves, V., André, P., Men’shchikov, A., et al. 2010, *A&A*, **518**, L106
- Könyves, V., André, P., Men’shchikov, A., et al. 2015, *A&A*, **584**, A91
- Krumholz, M. R. 2015, in *Very Massive Stars in the Local Universe*, ed. J. S. Vink, *Astrophys. Space Sci. Lib.*, **412**, 43
- Kutner, M. L., & Tucker, K. D. 1975, *ApJ*, **199**, 79
- Lombardi, M., Alves, J., & Lada, C. J. 2011, *A&A*, **535**, A16
- Loren, R. B., Peters, W. L., & Vanden Bout, P. A. 1974, *ApJ*, **194**, L103
- Louvet, F., Motte, F., Hennebelle, P., et al. 2014, *A&A*, **570**, A15
- Lynds, B. T. 1962, *ApJS*, **7**, 1
- Maddalena, R. J., Morris, M. J., M., & Thaddeus, P. 1986, *ApJ*, **303**, 375
- Mainzer, A., Bauer, J., Grav, T., et al. 2011, *ApJ*, **731**, 53
- Markwardt, C. B. 2009, in *Astronomical Data Analysis Software and Systems XVIII*, *ASP Conf. Ser.*, **411**, 251
- Marsh, K. A., Griffin, M. J., Palmeirim, P., et al. 2014, *MNRAS*, **439**, 3683
- Marsh, K. A., Kirk, J. M., André, P., et al. 2016, *MNRAS*, **459**, 342
- McKee, C. F., & Tan, J. C. 2002, *Nature*, **416**, 59
- Men’shchikov, A. 2013, *A&A*, **560**, A63
- Men’shchikov, A., André, P., Didelon, P., et al. 2012, *A&A*, **542**, A81
- Mink, D. J. 2002, in *Astronomical Data Analysis Software and Systems XI*, *ASP Conf. Ser.*, **281**, 169
- Motte, F., Zavagno, A., Bontemps, S., et al. 2010, *A&A*, **518**, L77
- Motte, F., Bontemps, S., & Louvet, F. 2017, *ARA&A*, submitted [arXiv:1706.00118]
- Myers, P. C. 2009, *ApJ*, **700**, 1609
- Nguyen Luong, Q., Motte, F., Hennemann, M., et al. 2011, *A&A*, **535**, A76
- Nguyen Luong, Q., Motte, F., Carlhoff, P., et al. 2013, *ApJ*, **775**, 88
- Ostriker, J. 1964, *ApJ*, **140**, 1056
- Ott, S. 2010, in *Astronomical Data Analysis Software and Systems XIX*, *ASP Conf. Ser.*, **434**, 139
- PACS Observer’s Manual 2013, Version 2.5.1, PACS Consortium
- Palmeirim, P., André, P., Kirk, J., et al. 2013, *A&A*, **550**, A38
- Pattle, K., Ward-Thompson, D., Kirk, J. M., et al. 2015, *MNRAS*, **450**, 1094
- Pence, W. 1999, in *Astronomical Data Analysis Software and Systems VIII*, *ASP Conf. Ser.*, **172**, 487
- Peretto, N., André, P., Könyves, V., et al. 2012, *A&A*, **541**, A63
- Peretto, N., Fuller, G. A., Duarte-Cabral, A., et al. 2013, *A&A*, **555**, A112
- Pilbratt, G. L., Riedinger, J. R., Passvogel, T., et al. 2010, *A&A*, **518**, L1
- Pillari, P., Fuente, A., Cernicharo, J., et al. 2012, *A&A*, **544**, A110
- Pillari, P., Treviño-Morales, S., Fuente, A., et al. 2013, *A&A*, **554**, A87
- Pillari, P., Fuente, A., Gerin, M., et al. 2014, *A&A*, **561**, A69
- Poglitsch, A., Waelkens, C., Geis, N., et al. 2010, *A&A*, **518**, L2
- Pokhrel, R., Gutermuth, R., Ali, B., et al. 2016, *MNRAS*, **461**, 22
- Racine, R. 1968, *AJ*, **73**, 233



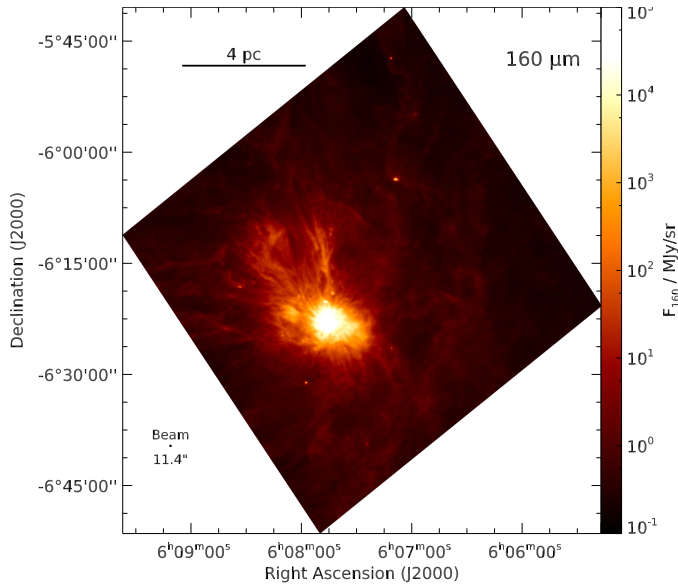
- Racine, R., & van den Bergh, S. 1970, in The spiral structure of our galaxy, *Proc. International Astronomical Union*, **38**, 219
- Rayner, T. S. M. 2015, Ph.D. Thesis, Cardiff University
- Reed, B. C. 2003, *AJ*, **125**, 2531
- Rieke, G. H., Young, E. T., Engelbracht, C. W., et al. 2004, *ApJS*, **154**, 25
- Rivera-Ingraham, A., Martin, P. G., Polychroni, D., et al. 2015, *ApJ*, **809**, 81
- Roussel, H. 2013, *PASP*, **125**, 1126
- Roy, A., André, P., Palmeirim, P., et al. 2014, *A&A*, **562**, A138
- Russeil, D., Schneider, N., Anderson, L. D., et al. 2013, *A&A*, **554**, A42
- Rygl, K. L. J., Goedhart, S., Polychroni, D., et al. 2014, *MNRAS*, **440**, 427
- Schneider, N., Csengeri, T., Bontemps, S., et al. 2010, *A&A*, **520**, A49
- Schneider, N., Csengeri, T., Hennemann, M., et al. 2012, *A&A*, **540**, L11; Erratum: 2013, *A&A*, **551**, C1
- Schneider, N., André, P., Könyves, V., et al. 2013, *ApJ*, **766**, L17
- Schneider, N., Bontemps, S., Girichidis, P., et al. 2015, *MNRAS*, **453**, 41
- Schulz, B. 2011, in Astronomical Data Analysis Software and Systems XX, *ASP Conf. Ser.*, **442**, 691
- Shetty, R., Kauffmann, J., Schnee, S., Goodman, A. A., & Ercolano, B. 2009, *ApJ*, **696**, 2234
- Shimmins, A. J., Clarke, M. E., & Ekers, R. D. 1966a, *Aust. J. Phys.*, **19**, 649
- Shimmins, A. J., Day, G. A., Ekers, R. D., & Cole, D. J. 1966b, *Aust. J. Phys.*, **19**, 837
- Shimmins, A. J., Manchester, R. N., & Harris, B. J. 1969, *Aust. J. Phys. Astrophys. Suppl.*, **8**, 3
- SPIRE Handbook 2014, Version 2.5, SPIRE Consortium
- SPIRE PACS Parallel Mode Observers' Manual 2011, Version 2.1
- Tafalla, M., Bachiller, R., Wright, M. C. H., & Welch, W. J. 1997, *ApJ*, **474**, 329
- Tigé, J., Motte, F., Russeil, D., et al. 2017, *A&A*, **602**, A77
- Treviño-Morales, S. P. 2016, Ph.D. Thesis, University of Granada
- Treviño-Morales, S. P., Pilleri, P., Fuente, A., et al. 2014, *A&A*, **569**, A19
- Treviño-Morales, S. P., Fuente, A., Sánchez-Monge, A., et al. 2016, *A&A*, **593**, L12
- Van den Bergh, S. 1966, *AJ*, **71**, 990
- Werner, M. W., Roellig, T. L., Low, F. J., et al. 2004, *ApJS*, **154**, 1
- White, G. J., Watt, G. D., Cronin, N. J., & van Vliet, A. H. F. 1979, *MNRAS*, **186**, 107
- Wolf, G. A., Lada, C. J., & Bally, J. 1990, *AJ*, **100**, 1892
- Wright, E. L., Eisenhardt, P. R. M., Mainzer, A. K., et al. 2010, *AJ*, **140**, 1868

## Appendix A: Individual wavelength maps

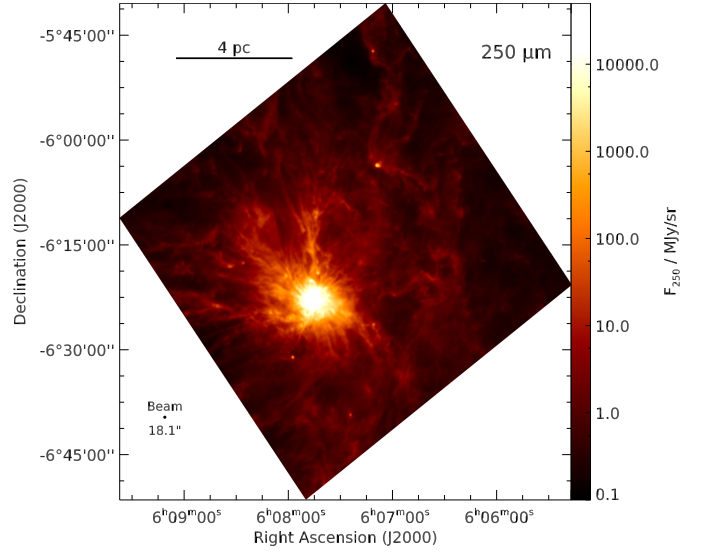
The maps for all wavelengths used in the *getsources* extraction are given here:  $70\ \mu\text{m}$  (Fig. A.1);  $160\ \mu\text{m}$  (Fig. A.2);  $250\ \mu\text{m}$  (Fig. A.3);  $350\ \mu\text{m}$  (Fig. A.4);  $500\ \mu\text{m}$  (Fig. A.5); MIPS  $24\ \mu\text{m}$  (Fig. A.6); and SCUBA-2  $850\ \mu\text{m}$  (Fig. A.7).



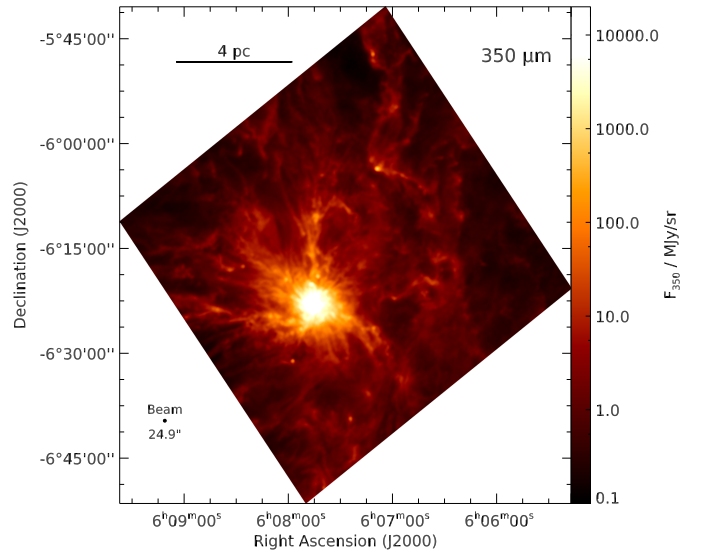
**Fig. A.1.** Monoceros R2 as viewed by *Herschel* PACS  $70\ \mu\text{m}$ . The image is  $1.15^{\circ} \times 1.3^{\circ}$  ( $16.7 \times 19.1\ \text{pc}$ ) in size. The diffraction-limited instrumental beam ( $5.6''$ ) is shown to the lower left of the image.



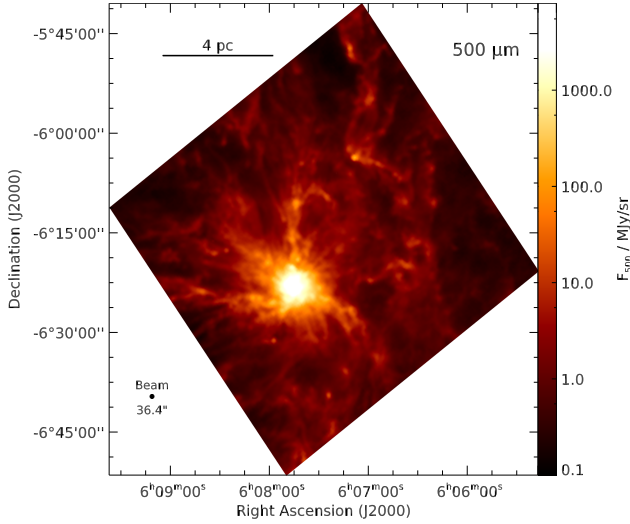
**Fig. A.2.** Monoceros R2 as viewed by *Herschel* PACS  $160\ \mu\text{m}$ . The image is the same area as covered by Fig. A.1. The instrumental beam ( $11.4''$ ) is shown to the lower left of the image.



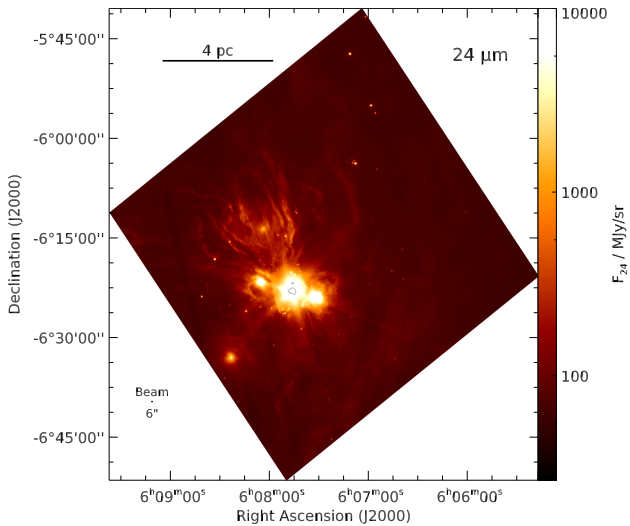
**Fig. A.3.** Monoceros R2 as viewed by *Herschel* SPIRE  $250\ \mu\text{m}$ . The image is the same area as covered by Fig. A.1 (there is a  $\sim 20'$  offset between the SPIRE and PACS images). The instrumental beam ( $18.1''$ ) is shown to the lower left of the image.



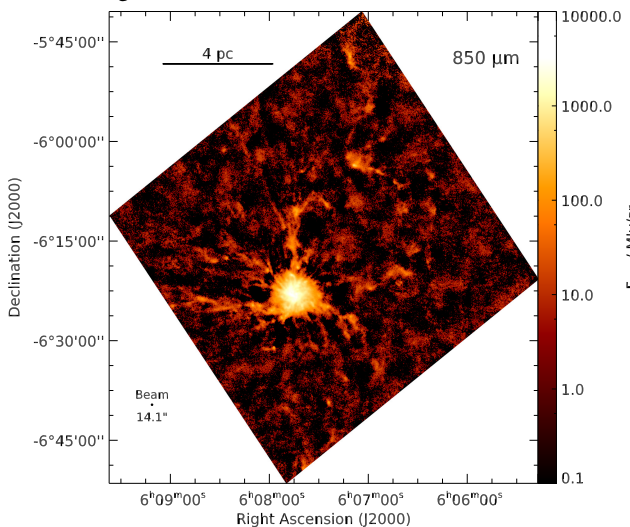
**Fig. A.4.** Monoceros R2 as viewed by *Herschel* SPIRE  $350\ \mu\text{m}$ . Otherwise, the same as for Fig. A.1. The instrumental beam ( $24.9''$ ) is shown to the lower left of the image.



**Fig. A.5.** Monoceros R2 as viewed by *Herschel* SPIRE 500  $\mu\text{m}$ . Otherwise, the same as for Fig. A.1. The instrumental beam (36.4'') is shown to the lower left of the image.



**Fig. A.6.** Monoceros R2 as viewed by MIPS, 24  $\mu\text{m}$ . Otherwise, the same as for Fig. A.1. The instrumental beam (6'') is shown to the lower left of the image.



**Fig. A.7.** Monoceros R2 as viewed by SCUBA-2, 850  $\mu\text{m}$ . Otherwise, the same as for Fig. A.1. The instrumental beam (14.1'') is shown to the lower left of the image.

## Appendix B: The *getsources* routine

The *getsources* routine was designed by the SAG-3 consortium to provide the best source extractions possible. It works on multiple wavelengths simultaneously, disentangles sources based on their spatial scales, and comes with a built-in filament-extraction routine (*getfilaments*). Full details of the routine are given in Men'shchikov et al. (2012), which gives an overview of the routine, and Men'shchikov (2013), which looks in detail at the filament extraction. The routine requires the use of three external libraries: SWarp (Bertin et al. 2002), CFITSIO (Pence 1999), and WCSTools (Mink 2002).

A basic overview of the routine is given here, while more in-depth descriptions of the individual subroutines appear in the following subsections. Initially (monochromatic extraction), *getsources* is run on each wavelength map separately: the maps are decomposed into their separate spatial scales and cleaned of background noise; sources are detected and measured. This initial extraction is used to find source footprints (the closest ellipse fitting to the source shape), which will be used in a later extraction. The spatial scale maps are now combined across all wavelengths (combined extraction) and sources are detected and measured in the combined maps. Using the source measurements from the previous steps, extended background in the original maps is “flattened” to allow for better detection, and the decomposition, cleaning, combination, detection, and measurement subroutines are run again on these new maps (final extraction).

### Preparation

Prior to the start of the routine, all input maps must be prepared using the *prepareobs* routine (packaged with *getsources*, but not run as part of the main routine). This resamples all images to the same pixel scale (generally the finest pixel scale is used, which in this paper was 1.4'', as the run included 70  $\mu\text{m}$  PACS data), and converts the units to MJy/sr. Two copies of each map are made: the “detection” map, which is smoothed very slightly (by about one third of the wavelength’s observational beam), and the “measurement” map, which is left unchanged.

Certain input parameters may also be chosen here; for example, individual maps may be declared “measurement-only”, meaning that the maps are not used for source detection. This can be used to include MIR and SMM maps, without filling the catalogue with sources detected only at these wavelengths.

### Decomposition

The detection maps are decomposed into about a hundred separate spatial scale maps. The first scale map follows the equation  $I_1 = I_D - \mathcal{G} * I_D$ , where  $I_D$  is the detection map and  $\mathcal{G}$  is a smoothing Gaussian. Larger-scale maps are formed using the smoothed map ( $\mathcal{G} * I_D$ ) in place of the detection map, and a slightly larger Gaussian. The spatial scales used vary between a few arcseconds and several thousand arcseconds, if the maps allow it. The scale maps are not normalised, and so the original detection map can be recreated by summing them together.

### Cleaning

To clean background noise from the spatial scale maps, areas of high emission must first be masked. Initially, all regions higher than  $6\sigma$  are masked, and then a new value of  $\sigma$  is found from the non-masked area, which is used to mask out regions above the

new  $6\sigma$  (we note that the exact factor of  $\sigma$  used is generally 6, but may differ depending on the scale map’s skewness and kurtosis). This process is iterated until there is no more change in either the mask or the  $\sigma$  value, at which point, every pixel below the new  $6\sigma$  value (called the noise threshold) is set to zero. Filaments are also extracted in this step, but the exact process is covered in the following subsection.

### Filament extraction

During the decomposition phase, objects are split up according to their spatial scales, and so extended objects will be seen only at larger scales, while smaller objects will only be seen at smaller scales. Filaments, however, will be assigned to scales close to their width, rather than their length. Consequently, large regions (the exact value depends on several variables, but is generally several hundred times the beam size, at the smallest scales, and much larger at larger scales) of connected pixels above the  $\sigma$  value in the smaller scale maps are likely to be due to filaments. The filaments are extracted from the images, and sources within them are detected by their small sizes and relatively high intensities, and are removed from the filaments. The filaments are then reconstructed across all spatial scales, and are characterised by the creation of filament skeleton maps.

### Combination

The maps for each scale are summed across the wavelengths, creating a set of wavelength-independent spatial scale maps. We note that since the spatial scales have been separated, the wavelengths’ differing resolutions is not an issue. Even so, there will not be much useful data from a scale smaller than about one third of the wavelength’s resolution, and so such scales are not included in the summation. Prior to summation, the maps are normalised, so that weaker sources are not lost (this will not be a problem, since these images are only used for source detection, not for measurement). This section of the routine is not performed in the first (monochromatic) extraction, which is performed on all wavelengths separately.

### Detection

To detect sources in the cleaned scale maps, the routine will select multiple values between the maximum intensity and the noise threshold. Pixels above these values are either used to make new sources, or are added to existing (adjacent) ones. The sources are correlated across the scale maps, meaning that each source will have a scale range over which it appears. This is used to distinguish overlapping sources with different spatial scales. At each scale, the source’s “detection significance” is measured; this is equal to the maximum intensity at this scale divided by the noise threshold, and is used to determine how well-detected any source is. Elliptical source footprints are also determined during this stage.

### Measurement

Measurement of source properties is performed on the “measurement maps”, which are essentially identical to the input maps. Filaments are removed from the maps, and non-filamentary background is estimated, using the source footprints measured above, and also removed. Sources are deblended by assuming a near-Gaussian profile (with stronger, and thus more realistic,

wings; note that the profile is only used to allocate flux by deblending). If the two sources are within one third of a beam size of one another, and their sizes are within a factor of two, they are assumed to be the same source and are thus combined. The properties measured include peak intensity (the value at the peak, in Jy/beam), total flux density (the integral over the whole source, in Jy), and source shape (major and minor axes, and axis angle); the final output is a catalogue listing these values at each wavelength for every source.

### Flattening

Before the final extraction, a more robust form of background-subtraction (“flattening”) is employed, in order to account for the problems raised by the variable Galactic backgrounds present in most *Herschel* images. The first two extractions (monochromatic and combined) were used to find and characterise as many sources as possible, which are then removed from the maps to create clean background maps. This is used to create a map of local ( $3 \times 3$  pixels) standard deviation, which is smoothed, first by median filtering, and then by convolution with a Gaussian three times the maximum source size, forming the scaling map, which is used to scale the detection map. This means that highly variable parts of the map will be deemphasised, when compared with the regions with flatter background. We note that this only affects the detection maps; the measurement maps are not changed in any way.

### Advantages and disadvantages

The *getsources* routine works on all wavelengths at once, and at multiple spatial scales at once, which gives it a great advantage over other source finders. It deblends overlapping sources and utilises background flattening to find the best sources possible. Its scale-decomposition allows it to detect sources at both large and small scales, something many other source finders do not do. It is not without disadvantages, most of which stem from the sheer size of the program. For example, many other source finders can run over the five *Herschel* wavelengths in under an hour, giving one or two output files for each of the five extractions; on the same maps, *getsources* can run for a week, giving several GB of output. Despite this, the advantages in enhanced detection will generally outweigh the disadvantages in ease (and speed) of use. Discussions of various source finders are given in [André et al. \(2014\)](#) and [Rayner \(2015\)](#). A look at the completeness of *getsources* in Mon R2 is given in [Appendix C](#).

## Appendix C: The completeness of the *getsources* extraction

In order to test the completeness of the catalogue, the *getsources* program was run on a field of simulated data based on the original Mon R2 maps, with additional sources superimposed on them. Though there are disadvantages to adding the sources to the original map, as the real sources on the map will add confusion to the output, the alternative (to add simulated sources to a source-free background map) may also have problems caused by artefacts from the source-removal process. The main advantage of using the original map is that the *getsources* output for the original map alone is already available, and any changes to this output will thus be due to the inserted sources.

The basic technique was based on those of [Marsh et al. \(2016\)](#) and [Könyves et al. \(2015\)](#), albeit with modifications



made due to the differences between the regions in question (Mon R2 is at 830 pc, with a very dense central hub, while Taurus and Aquila are at 140 pc and 260 pc respectively, without any regions comparable to the Mon R2 hub). A total of 440 model sources were input into the maps. These included sources modelled as protostars (116), bound (186) and unbound (138) cores, with shapes approximating to 2D Gaussians. The mass range was  $0.03\text{--}10 M_{\odot}$  and temperature and size ranges were chosen to fit with the observed parameter ranges within the region. The fluxes at each wavelength were calculated using the SED in Eq. (4), and their positions on the map were chosen randomly, with protostars and bound sources placed in regions with column densities over  $3 \times 10^{21} \text{ cm}^{-2}$ , and unbound sources (which do not necessarily trace the highest column densities) placed in regions with a  $250 \mu\text{m}$  intensity over  $57 \text{ MJy/sr}$ .

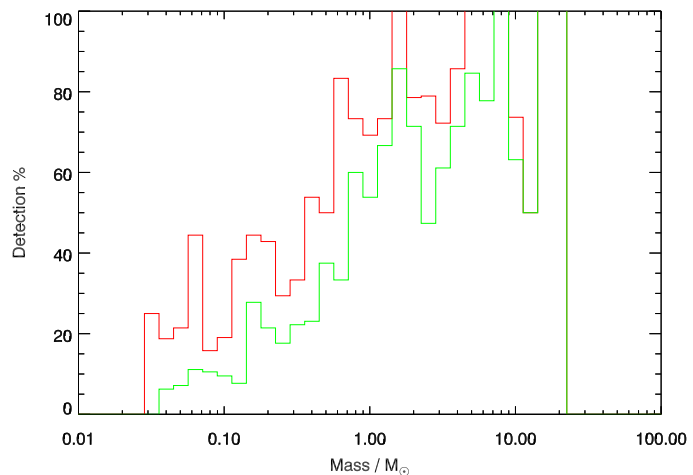
The maps used for this procedure were all *Herschel* (PACS and SPIRE) maps, along with the  $850 \mu\text{m}$  SCUBA-2 map, and the column density map. The  $24 \mu\text{m}$  MIPS map was not included, as this was only used for luminosity calculations. For simplicity, the column density profiles of the sources were added directly into the column density map, rather than having the column density map recreated from the new flux maps.

The *getsources* routine was run (see Appendix B for details), and the source selection and cataloguing process was run on the output. Model sources were counted as detected when their centres lay within  $11.4''$  (the  $160 \mu\text{m}$  beam size) or 30% of the model source size (whichever was larger) of the centre of a detected source. In total, 40% (175 of 440) model sources were detected, about 60% of those above  $1 M_{\odot}$ , but only 20% of those below this value. Consequently, setting a completeness limit of  $1 M_{\odot}$  would mean that the majority of sources had been detected. The percentage of detected sources against mass is given in Fig. C.1. A detected source also had a  $\geq 75\%$  chance to be assigned the correct source type.

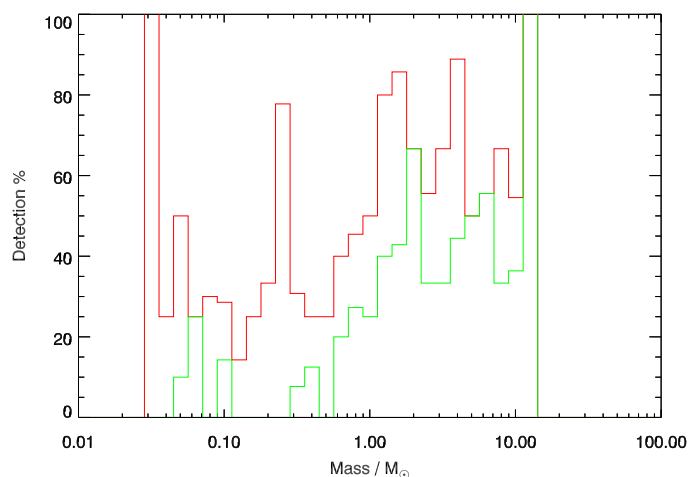
The most likely reason for the low completeness, even at high masses, is the large sizes given to some of these sources by the model core creation routine. Although these were not much larger than the detected sources (the largest model source was  $0.35 \text{ pc}$  across, compared to  $0.30 \text{ pc}$ ), this did have the consequence that even sources with masses over  $20 M_{\odot}$  could have densities similar to those of much lower mass, and would thus be much harder to detect. If only sources with the smallest sizes (under  $0.03 \text{ pc}$ ) are considered, the completeness goes up to 80% detection above  $1 M_{\odot}$ , and 100% detection above  $4 M_{\odot}$ , but this is not a full representative sample of all sources in the region.

A secondary completeness test was applied solely to the central hub, due to its higher confusion and average column density. A further five separate runs placed a total of 212 model sources into the hub (89 protostellar, 70 bound, and 53 unbound), with mass and size ranges equal to those of the original run, and a slight increase in the lower limit of the temperature range, to account for the higher temperatures. Other than the area covered, and the number of sources, each of these runs was identical to the original run over the full region. In total, only 33% of model sources with masses above  $1 M_{\odot}$  (or 20% of all model sources) were detected, half as many proportionally as over the full maps. In addition, a dependence on size was also present, as 79% of detected model sources were under  $20''$ . The detections against mass for the hub region are shown in Fig. C.2.

Overall, the completeness analysis shows that in the more quiescent parts of Mon R2, more than 60% of sources above  $1 M_{\odot}$  will be detected robustly. This percentage depends strongly on the size of the object in question, and increases to 90% when dealing strictly with objects under  $0.035 \text{ pc}$  in size (and 100%



**Fig. C.1.** Completeness of sources. The red line shows the percentage of sources detected by *getsources*; the green line shows the percentage of sources added to the catalogue.



**Fig. C.2.** Completeness of sources in the hub region; otherwise, as for Fig. C.1.

of for a mass limit of  $4 M_{\odot}$ ), while only 50% of more extended sources are detected (above  $1 M_{\odot}$ ). This is seen to an even greater extent within the central hub, where *getsources* only robustly detects  $\sim 30\%$  of sources. As such while it is not feasible to define a mass completeness limit for the larger, less-dense sources, a mass limit of  $1 M_{\odot}$  for protostars and other compact sources under  $\sim 0.035 \text{ pc}$  in size is suggested.

## Appendix D: Catalogue

The Mon R2 HOBYS catalogue tables for the first eleven sources are given here (ordered by mass; these are the sources over  $10 M_{\odot}$ ). There are ten tables: one containing the source name and position (Table D.1); five containing *Herschel getsources* output (Tables D.2–D.8); one for each wavelength of non-*Herschel getsources* output (in this case, MIPS  $24 \mu\text{m}$  and SCUBA-2  $850 \mu\text{m}$ ); one for WISE catalogue fluxes; and one for derived parameters (this table is given in the main body of the paper as Table 4). We note that not all sources have associated WISE sources; only those that do will be included here. A full version of this table, including observed fluxes, and starless cores, is available at the CDS. The full table will contain all

**Table D.1.** Global parameters.

#	Name	RA <sub>2000</sub>	Dec <sub>2000</sub>
1	HOBYS J060740.3 –062447	06 <sup>h</sup> 07 <sup>m</sup> 40.28 <sup>s</sup>	–06°24′46.9″
2	HOBYS J060738.4 –062244	06 <sup>h</sup> 07 <sup>m</sup> 38.44 <sup>s</sup>	–06°22′44.3″
3	HOBYS J060746.1 –062312	06 <sup>h</sup> 07 <sup>m</sup> 46.12 <sup>s</sup>	–06°23′12.0″
4	HOBYS J060751.2 –062206	06 <sup>h</sup> 07 <sup>m</sup> 51.20 <sup>s</sup>	–06°22′06.4″
5	HOBYS J060752.2 –062327	06 <sup>h</sup> 07 <sup>m</sup> 52.19 <sup>s</sup>	–06°23′27.4″
6	HOBYS J060747.5 –062203	06 <sup>h</sup> 07 <sup>m</sup> 47.51 <sup>s</sup>	–06°22′02.7″
7	HOBYS J060743.6 –061028	06 <sup>h</sup> 07 <sup>m</sup> 43.64 <sup>s</sup>	–06°10′28.2″
8	HOBYS J060757.2 –062158	06 <sup>h</sup> 07 <sup>m</sup> 57.23 <sup>s</sup>	–06°21′57.6″
9	HOBYS J060706.3 –060904	06 <sup>h</sup> 07 <sup>m</sup> 06.32 <sup>s</sup>	–06°09′04.3″
10	HOBYS J060747.9 –062501	06 <sup>h</sup> 07 <sup>m</sup> 47.92 <sup>s</sup>	–06°25′00.6″
11	HOBYS J060621.9 –060519	06 <sup>h</sup> 06 <sup>m</sup> 21.88 <sup>s</sup>	–06°05′19.0″

**Notes.** This contains: source name; and the source Right Ascension (RA) and Declination (Dec) in J2000 coordinates.

**Table D.2.** 70  $\mu\text{m}$  parameters.

#	$F_{70\text{P}} \pm \sigma_{70\text{P}}$ (Jy $\text{bm}^{-1}$ )	$F_{70\text{T}} \pm \sigma_{70\text{T}}$ (Jy)	$A_{70}$ (arcsec)	$B_{70}$ (arcsec)	$\Theta_{70}$ (degrees)
1	0.1 $\pm$ 0.2	1.1 $\pm$ 0.5	31.2	14.1	106.9
2	1.4 $\pm$ 0.6	9 $\pm$ 1	19.6	10.5	119.5
3	600 $\pm$ 50	1730 $\pm$ 80	14.3	5.9	69.6
4	0.9 $\pm$ 0.6	6 $\pm$ 1	20.6	11.3	42.2
5	0.5 $\pm$ 0.5	3 $\pm$ 1	22.2	9.4	116.1
6	4 $\pm$ 4	14 $\pm$ 5	11.4	6.7	169.6
7	...	0.02 $\pm$ 0.05	69.8	34.3	72.8
8	...	...	45.7	16.5	152.7
9	0.004 $\pm$ 0.002	0.28 $\pm$ 0.02	94.3	86.1	132.8
10	0.2 $\pm$ 0.2	2.2 $\pm$ 0.5	23.4	12.1	152.9
11	0.0116 $\pm$ 0.0005	0.132 $\pm$ 0.004	62.3	59.4	98.6

**Notes.** This contains:  $F_{70\text{P}}$  and  $\sigma_{70\text{P}}$ , the peak intensity and its uncertainty (left blank if the source was not detected at this wavelength);  $F_{70\text{T}}$  and  $\sigma_{70\text{T}}$ , the total flux density and its uncertainty (we note that these are the direct output from *getsources*, and thus have not been modified by flux scaling);  $A_{70}$ ,  $B_{70}$  and  $\Theta_{70}$ , the major and minor FWHM axes and the axis orientation (degrees east of vertical).

**Table D.3.** 160  $\mu\text{m}$  parameters. As above.

#	$F_{160\text{P}} \pm \sigma_{160\text{P}}$ (Jy $\text{bm}^{-1}$ )	$F_{160\text{T}} \pm \sigma_{160\text{T}}$ (Jy)	$A_{160}$ (arcsec)	$B_{160}$ (arcsec)	$\Theta_{160}$ (degrees)
1	5 $\pm$ 2	15 $\pm$ 3	21.5	14.7	27.2
2	11 $\pm$ 4	26 $\pm$ 5	24.3	11.7	135.8
3	770 $\pm$ 40	1020 $\pm$ 40	15.7	11.7	65.1
4	16 $\pm$ 7	31 $\pm$ 7	20.5	11.7	35.2
5	14 $\pm$ 6	32 $\pm$ 8	21.3	11.7	51.2
6	70 $\pm$ 30	130 $\pm$ 30	15.9	12.9	136.2
7	0.72 $\pm$ 0.07	5.3 $\pm$ 0.2	47.8	20.5	178.6
8	1.1 $\pm$ 0.8	4 $\pm$ 1	41.9	13.4	71.3
9	0.13 $\pm$ 0.09	2.7 $\pm$ 0.5	86.3	79.1	115.5
10	10 $\pm$ 3	26 $\pm$ 5	21.2	12.6	141.7
11	0.14 $\pm$ 0.06	2.1 $\pm$ 0.2	59.5	41.7	2.6

robustly detected sources, although with the caveat that the sample is likely incomplete, especially below 1  $M_{\odot}$ . In addition to these tables, the catalogues will contain a set of images for each

source (such as Fig. D.1) showing their appearances at different wavelengths. We note that all fluxes are direct outputs from *getsources*, without flux-scaling or colour corrections applied.

**Table D.4.** 250  $\mu\text{m}$  parameters. As above.

#	$F_{250\text{P}} \pm \sigma_{250\text{P}}$ ( $\text{Jy bm}^{-1}$ )	$F_{250\text{T}} \pm \sigma_{250\text{T}}$ (Jy)	$A_{250}$ (arcsec)	$B_{250}$ (arcsec)	$\Theta_{250}$ (degrees)
1	$16 \pm 5$	$25 \pm 5$	23.9	19.0	23.7
2	$13 \pm 4$	$18 \pm 4$	24.9	18.2	122.3
3	$486 \pm 9$	$654 \pm 8$	21.5	18.2	95.1
4	$18 \pm 8$	$17 \pm 7$	19.0	18.2	41.9
5	$19 \pm 7$	$24 \pm 7$	22.6	18.2	50.8
6	$100 \pm 10$	$103 \pm 9$	18.5	18.2	107.8
7	$3.1 \pm 0.5$	$12 \pm 1$	30.5	27.3	80.0
8	$4 \pm 1$	$12 \pm 2$	38.1	24.6	45.9
9	$0.5 \pm 0.2$	$5.1 \pm 0.6$	81.9	56.8	91.0
10	$18 \pm 6$	$24 \pm 6$	26.2	18.2	139.3
11	$0.8 \pm 0.1$	$3.2 \pm 0.3$	42.7	26.8	169.2

**Table D.5.** 350  $\mu\text{m}$  parameters. As above.

#	$F_{350\text{P}} \pm \sigma_{350\text{P}}$ ( $\text{Jy bm}^{-1}$ )	$F_{350\text{T}} \pm \sigma_{350\text{T}}$ (Jy)	$A_{350}$ (arcsec)	$B_{350}$ (arcsec)	$\Theta_{350}$ (degrees)
1	$12 \pm 2$	$11 \pm 5$	30.5	26.1	14.0
2	$17 \pm 2$	$27 \pm 2$	33.2	26.2	2.2
3	$221 \pm 4$	$246 \pm 3$	24.9	24.9	128.0
4	$13 \pm 4$	$18 \pm 3$	30.8	28.9	144.5
5	$14 \pm 4$	$15 \pm 4$	24.9	24.9	130.0
6	$67 \pm 4$	$72 \pm 4$	24.9	24.9	76.3
7	$3.5 \pm 0.4$	$8.2 \pm 0.6$	35.9	28.1	79.7
8	$4 \pm 2$	$6 \pm 2$	42.4	24.9	54.5
9	$0.6 \pm 0.2$	$3.3 \pm 0.4$	70.8	45.7	79.8
10	$12 \pm 4$	$17 \pm 4$	38.0	24.9	136.2
11	$1.1 \pm 0.2$	$2.8 \pm 0.2$	41.9	30.2	172.2

**Table D.6.** 500  $\mu\text{m}$  parameters. As above.

#	$F_{500\text{P}} \pm \sigma_{500\text{P}}$ ( $\text{Jy bm}^{-1}$ )	$F_{500\text{T}} \pm \sigma_{500\text{T}}$ (Jy)	$A_{500}$ (arcsec)	$B_{500}$ (arcsec)	$\Theta_{500}$ (degrees)
1	$11 \pm 2$	$52 \pm 4$	89.1	49.2	109.6
2	$10 \pm 2$	$12 \pm 2$	39.0	36.3	46.0
3	$75 \pm 2$	$73 \pm 2$	36.3	36.3	137.4
4	$15.0 \pm 0.4$	$20.8 \pm 0.4$	38.0	36.3	177.2
5	$16 \pm 2$	$35 \pm 3$	67.8	36.3	19.0
6	$25 \pm 2$	$24 \pm 2$	36.3	36.3	175.0
7	$3.2 \pm 0.3$	$4.4 \pm 0.4$	38.4	36.3	82.6
8	$2.5 \pm 0.7$	$4 \pm 1$	41.7	36.3	94.4
9	$0.5 \pm 0.2$	$1.5 \pm 0.3$	59.6	46.5	83.2
10	$16 \pm 1$	$25 \pm 1$	56.5	36.3	74.5
11	$1.0 \pm 0.2$	$1.5 \pm 0.2$	44.8	36.3	172.8



**Table D.7.** MIPS 24  $\mu\text{m}$  parameters. As above.

#	$F_{24\text{P}} \pm \sigma_{24\text{P}}$ (Jy $\text{bm}^{-1}$ )	$F_{24\text{T}} \pm \sigma_{24\text{T}}$ (Jy)	$A_{24}$ (arcsec)	$B_{24}$ (arcsec)	$\Theta_{24}$ (degrees)
1	$0.01 \pm 0.01$	$0.05 \pm 0.03$	33.2	22.4	156.0
2	$0.00 \pm 0.02$	$0.04 \pm 0.04$	10.4	6.0	81.8
3	$0.0 \pm 0.1$	$0.0 \pm 0.1$	19.8	6.5	68.2
4	...	...	17.7	13.6	108.4
5	...	...	29.7	17.0	6.4
6	...	...	19.0	6.0	168.9
7	$0.0001 \pm 0.0002$	$0.031 \pm 0.001$	69.4	36.9	151.0
8	$0.005 \pm 0.008$	$0.15 \pm 0.04$	48.3	41.9	81.6
9	$0.0000 \pm 0.0003$	...	100.0	70.8	148.8
10	...	$0.00 \pm 0.01$	25.2	8.1	172.9
11	...	...	63.0	25.2	163.6

**Table D.8.** SCUBA-2 850  $\mu\text{m}$  parameters. As above.

#	$F_{850\text{P}} \pm \sigma_{850\text{P}}$ (Jy $\text{bm}^{-1}$ )	$F_{850\text{T}} \pm \sigma_{850\text{T}}$ (Jy)	$A_{850}$ (arcsec)	$B_{850}$ (arcsec)	$\Theta_{850}$ (degrees)
1	$0.3 \pm 0.1$	$0.6 \pm 0.2$	15.9	13.0	50.0
2	$0.13 \pm 0.1$	$0.3 \pm 0.1$	26.3	13.9	127.0
3	$3.4 \pm 0.2$	$9.4 \pm 0.3$	21.3	17.3	89.3
4	$0.1 \pm 0.1$	$0.3 \pm 0.1$	22.5	15.1	36.4
5	$0.2 \pm 0.1$	$0.4 \pm 0.2$	22.9	13.0	53.6
6	$1.1 \pm 0.2$	$2.9 \pm 0.4$	22.8	13.4	102.7
7	$0.12 \pm 0.01$	$1.25 \pm 0.04$	40.3	29.9	59.6
8	$0.05 \pm 0.03$	$0.22 \pm 0.06$	37.1	20.2	45.5
9	$0.025 \pm 0.008$	$0.87 \pm 0.04$	83.9	78.3	90.2
10	$0.29 \pm 0.1$	$0.7 \pm 0.1$	24.0	14.3	105.8
11	$0.03 \pm 0.01$	$0.27 \pm 0.02$	52.8	25.5	161.8

**Table D.9.** WISE fluxes and name.

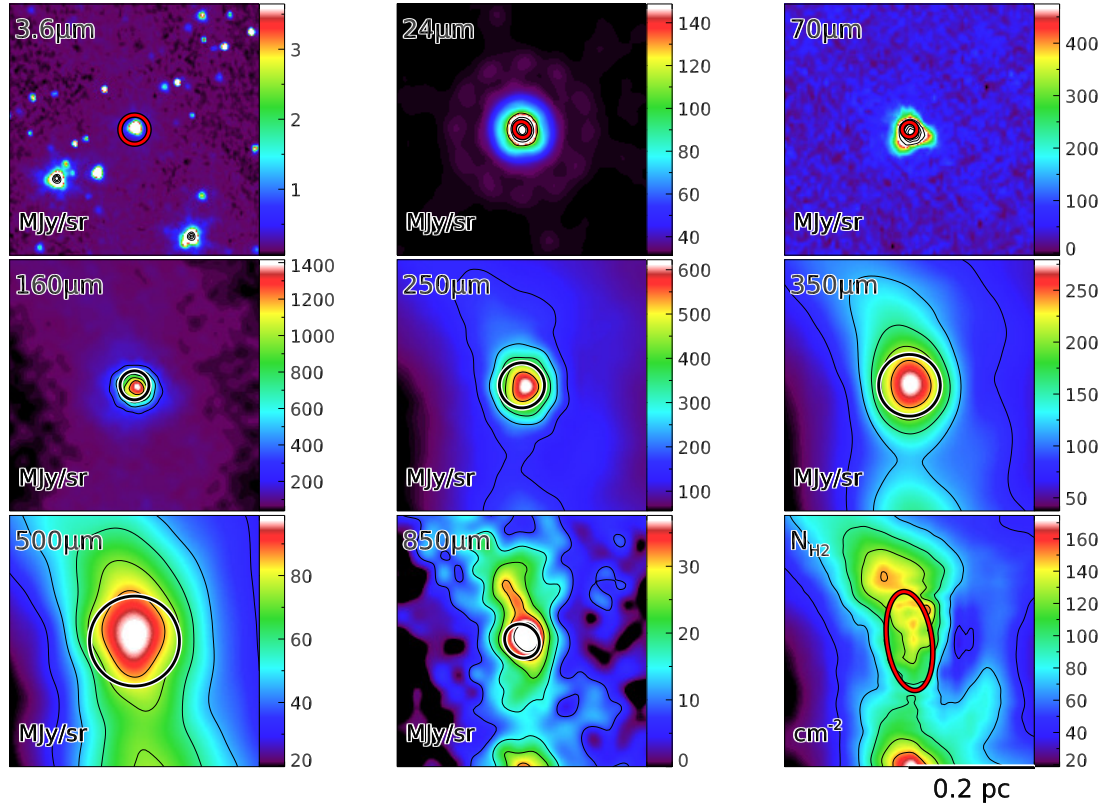
#	$F_{3.4}$ (Jy)	$F_{4.6}$ (Jy)	$F_{12}$ (Jy)	$F_{22}$ (Jy)	WISE name
3	7.1	14	230	760	J060746.08–062312.0

**Notes.** Note that only one of the first eleven sources was on the WISE catalogue (the protostar HOBYS J060746.1 –062312/Mon R2 IRS 1).

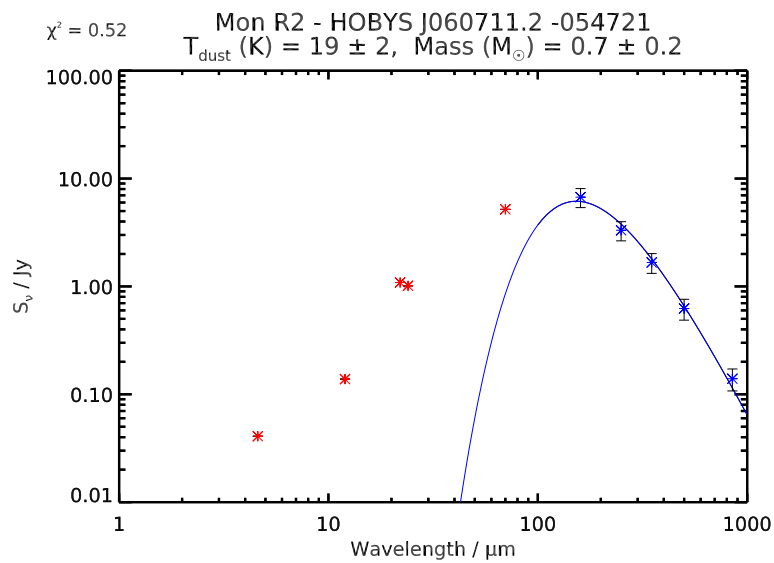
144

Mon R2 - HOBYS J060711.2 -054721  
 RA = 06<sup>h</sup>07<sup>m</sup>11.18<sup>s</sup> Dec = -05°47'20.8"

$M = 0.67 M_{\odot}$   
 $R_{\text{ref}} = 5.7''$



**Fig. D.1.** Images of a probable protostellar core in the Monoceros R2 region at 3.6  $\mu\text{m}$  (IRAC), 24  $\mu\text{m}$  (MIPS), 70  $\mu\text{m}$ , 160  $\mu\text{m}$  (PACS), 250  $\mu\text{m}$ , 350  $\mu\text{m}$ , 500  $\mu\text{m}$  (SPIRE), 850  $\mu\text{m}$  (SCUBA-2) and in the high-resolution column density map (source HOBYS J060711.2 –054721; number 144 in the full catalogue). All images cover the same spatial scale (approximately  $100'' \times 100''$ , or  $0.4 \text{ pc} \times 0.4 \text{ pc}$ ); this is for consistency across all sources, some of which are much larger than HOBYS J060711.2 –054721. The ellipses show the extent of the source FWHM (assuming a 2d Gaussian shape) as determined by *getsources* for each individual wavelength. A black ellipse indicates that the detection at this wavelength was either considered reliable (160–850  $\mu\text{m}$ ), or was a 70  $\mu\text{m}$  detection used for the SED fit. (The ellipse shown at 3.6  $\mu\text{m}$  is the ellipse measured at the reference wavelength; here 160  $\mu\text{m}$ .) The source mass and angular size at the reference wavelength are given at the upper right of the snapshots. We note that only one set of snapshots is included here; the full catalogue will contain snapshots for all robust sources. The SED of this source is given in Fig. D.2.



**Fig. D.2.** SED of a probable protostellar core in the Monoceros R2 region. Blue crosses represent reliable data points; red crosses represent short-wavelength data points used only for luminosity calculations (while not present here, some SEDs within the catalogue also show red crosses, albeit with long error-bars, which represent unreliable data points, which are used for SED fitting, but with greatly increased errors). The  $\chi^2$  value of the fit is given at the upper left of the plot. The snapshots of this source are given in Fig. D.1. We note that the fluxes are those used for the SED calculation, and have thus been modified using flux scaling.