



HAL
open science

An integrated modeling framework for quantitative business continuity assessment

Zhiguo Zeng, Enrico Zio

► **To cite this version:**

Zhiguo Zeng, Enrico Zio. An integrated modeling framework for quantitative business continuity assessment. *Process Safety and Environmental Protection*, 2017, 106, pp.76 - 88. 10.1016/j.psep.2016.12.002 . hal-01632276

HAL Id: hal-01632276

<https://hal.science/hal-01632276>

Submitted on 9 Nov 2017

HAL is a multi-disciplinary open access archive for the deposit and dissemination of scientific research documents, whether they are published or not. The documents may come from teaching and research institutions in France or abroad, or from public or private research centers.

L'archive ouverte pluridisciplinaire **HAL**, est destinée au dépôt et à la diffusion de documents scientifiques de niveau recherche, publiés ou non, émanant des établissements d'enseignement et de recherche français ou étrangers, des laboratoires publics ou privés.

An integrated modeling framework for quantitative business continuity assessment

Zhiguo Zeng,[†] Enrico Zio (*),^{†‡}

[†]Chair on System Science and the Energy Challenge, Fondation Electricite de France (EDF), CentraleSupélec, Université Paris-Saclay, Grande Voie des Vignes, 92290 Chatenay-Malabry, France

[‡]Energy Department, Politecnico di Milano, Milano, Italy

Abstract

Systems are increasingly exposed to threats of disruptive events, e.g., failures, natural disasters, terrorist attacks, etc. A proactive approach is needed to protect the business and reduce the potential losses caused by these disruptive events. Business Continuity Management (BCM) is a way to integrate the recovery process within the preventive framework of risk assessment. Such integrated risk management strategy offers great potential benefits. However, the complexity of applying it in practice is such that existing BCM strategies are mainly based on qualitative methods only, which limits the potential added values. To support quantitative BCM, in this paper we define a set of quantitative business continuity metrics. The defined metrics are based on the estimated losses incurred by the disruptive event in the whole business process. For this, the business process is divided into four sequential phases, i.e., protection phase, mitigation phase, emergency phase and recovery phase. For each phase, a specific modeling method is developed and an integrated modeling framework is constructed for the business continuity. Simulation can, then, be used to quantify the business continuity metrics. The developed methods are applied to assess the business continuity of an oil storage tank farm.

Index Terms

Business continuity management, risk analysis, event tree, event consequence diagram, semi-Markovian model

* Email of the corresponding author: enrico.zio@ecp.fr, enrico.zio@polimi.it

An integrated modeling framework for quantitative business continuity assessment

1

I. INTRODUCTION

2 Nowadays, systems, especially critical infrastructures in process industries, are increasingly exposed to threats
3 from disruptive events [1], e.g., unexpected system failures [2], natural disasters [3], terrorist attacks [4], etc.
4 Usually, organizations rely on risk analysis and management methods to protect them from the potential losses
5 caused by the disruptive events [5–8]. Khan et al. [9] presented a thorough review of the commonly applied
6 safety and risk management methods in process industries. Most of the existing risk analysis and management
7 methods focus on damage processes by analyzing the possible consequences of a disruptive event and their
8 likelihoods [10]. The recovery process, however, is not considered by these methods. In practice, the potential
9 losses that an organization might suffer also depend on the recovery process. According to a survey by IBM
10 Global Services [11], in 2008, enterprises in IT sectors have been estimated to suffer from an average revenue
11 cost of 2.8 million US dollars per hour for an unplanned application outage. Another report from Ponemon
12 Institute reveals that for a company that operates data centers, the average downtime cost per minute has exceeded
13 \$5,000 [12]. For these systems, conventional risk analysis and management methods should be extended, so
14 that the recovery process can be integrated in risk management.

15 Business Continuity Management (BCM) is a way to integrate the recovery process within the preventive
16 view of risk assessment [13]. It is defined by the International Organization of Standards (ISO) as “holistic
17 management process that identifies the potential threats to an organization and the impacts to business operations
18 that those threats, if realized, might cause, which provides a framework for building organizational resilience
19 with the capability of an effective response that safeguards the interests of its key stakeholders, reputation, brand
20 and value-creating activities ” [14]. As an integrated management strategy aiming at reducing the technological
21 and operational risks that threaten an organization’s recovery from hazards and interruptions, BCM has attracted
22 a lot of attention in the last decade [15].

23 Cerullo et al. [13] proposed a comprehensive approach to BCM planning, with particular focuses on internal
24 and external information security threats. Zsidisin et al. [16] discussed the necessity and benefit of implementing
25 BCM in an organization. Castillo [17] surveyed the application of BCM planning to achieve organizational
26 disaster preparedness at Boeing. Gibb and Buchanan [18] presented an integrated framework to support BCM
27 planning. Herbane et al. [15] reviewed the historical evolution of BCM and summarized critical events that
28 motivate its development. Snedaker [19] compared BCM to the conventional risk management methods and
29 pointed out that BCM not only focuses on the protection of the system before the crisis, but also the recovery
30 process during and after the crisis. Randeree et al. [20] developed a model to assess the maturity of the BCM
31 programs and applied it on a case study from UAE banking sector. Faertes [21] used system reliability models
32 to plan BCM. Sahebjamnia et al. [22] proposed a framework to integrate BCM and disaster recovery planning,
33 to ensure that the system would resume and recover its operation in an efficient and effective way. Parise et

1 al. [23] discussed methods that are used to ensure the business continuity of a safety-related power supply
 2 system. Torabi et al. [24] developed an enhanced risk assessment framework to support business continuity
 3 management. Rabbani et al. [25] presented a fuzzy cost-benefit analysis method for planning BCM strategies.

4 As a holistic, integrated risk management strategy, BCM offers great potential benefits but the complexity
 5 of the problem is such that most currently existing BCM strategies are based on qualitative methods only, and
 6 this limits practical application. Very few works concern the quantitative modeling and analysis of business
 7 continuity. Boehmer et al. [26] presented an approach, which is based on process algebra and modal logic, to
 8 model the system behavior in the business continuity process. Similar models have been applied in Brandt et al.
 9 [27] to describe the business continuity process of a credit card company. A multi-layer model is developed in
 10 Asnar [28] to model the business continuity of a loan originating process. Bonafede et al. [29] combined Cox's
 11 model and Bayesian networks to model the business continuity process. Tan and Takakuwa [30] developed a
 12 simulation model to investigate the business continuity of a company considering the outbreak of a pandemic
 13 disease, where the business continuity is characterized by the operation rate and the plant-utilization rate. These
 14 models describe the post-crisis behavior of the system. However, no clearly-defined business metrics have been
 15 defined from these models, which prohibits the quantitative analysis of business continuity based on these
 16 models and therefore, limits their application in practice.

17 This paper focuses on the modeling and quantitative analysis of business continuity. The contributions of this
 18 paper are summarized as follows.

- 19 • Four quantitative metrics for business continuity are defined, based on the potential losses caused by the
 20 disruptive events.
- 21 • An integrated modeling framework is developed to model the whole business process.
- 22 • A simulation-based method is presented to calculate the defined business continuity metrics based on the
 23 integrated model.

24 The rest of the paper is organized as follows. **In Section II, we present a four-phase conceptual model for**
 25 **business processes. Based on the conceptual model, the definition of the quantitative business continuity metrics**
 26 **are presented in Section III.** An integrated modeling framework is developed in Section IV for the modeling
 27 and assessment of business continuity. The developed methods are applied in Section V to assess the business
 28 continuity of an oil storage tank farm. Finally, the paper is concluded in Section VI with a discussion on
 29 potential future works.

30 II. A CONCEPTUAL MODEL FOR BUSINESS CONTINUITY PROCESS

31 In this section, we present a conceptual model that describes the business continuity process and identifies
 32 its major contributing factors. Business continuity is defined as the capability of an organization to continue
 33 delivery of products or services at acceptable levels following disruptive events [14]. It measures the capability
 34 of an organization to remain at or quickly recover to operational states after being affected by disruptive events.
 35 **Usually, the business process of an organization can be characterized by a performance indicator, denoted by**
 36 **PPI_B , whose value reflects the degree to which the objective of the organization is satisfied. For example, for**
 37 **an oil refinery, the PPI_B is its daily production yield; for a manufacturing factory, the PPI_B is the products**
 38 **produced per day. The values of PPI_B are determined by the operation state of the organization: the PPI_B**

1 remains at its nominal value when the system is under normal operation and drops to a degraded value when
 2 the normal operation of the system is disrupted. In practice, an organization is susceptible to various disruptive
 3 events, which might jeopardize its business continuity. Commonly encountered disruptive events include

- 4 • technological disruptions, caused by component or system failures;
- 5 • natural disruptions, caused by natural disasters, e.g., floods, earthquakes, lightening, etc.;
- 6 • social disruptions, caused by social movements, e.g., terrorist attacks, strikes, supply chain disruptions,
 7 etc.

8 When one or some of these disruptive events occur, the normal operation is disrupted and PPI_B drops to a
 9 degraded value, as a consequence of the disruptive events. The organization and its stakeholders, then, suffer
 10 from losses caused by the business interruption. To reduce such losses, various business continuity measures
 11 can be taken to guarantee the continuity of the business process. Generally speaking, those measures can be
 12 divided into four categories, i.e.,

- 13 • protection measures, for defending the system from the disruptive events and preventing them from
 14 damaging the system. If protection measures succeed, the business process is not interrupted;
- 15 • mitigation measures, which are automatically activated when the protection measures fail and initial damage
 16 has been caused by the disruptive events. The aim of the mitigation measures is to contain the evolution
 17 of the disruptive events at the early stages of development, so that damages can be mitigated;
- 18 • emergency measures, which happen when the mitigation measures fail to contain the damage, and often
 19 require significant human intervention;
- 20 • recovery measures, which aim at re-establishing normal operation.

21 For example, lightning is a severe threat to oil & gas systems [31]. Often, a lightening protection mast is installed
 22 at oil and gas tank farms as a protection measure against the threat of lightning [32]. If the protection mast fails
 23 to protect the system, the oil storage tank might catch fire [33]. Mitigation measures, such as the automatic fire
 24 extinguishing system, are automatically activated to fight the fire in order to prevent it from spreading to other
 25 tanks, causing a domino effect [33]. Emergency measures, e.g., the intervention of a fire brigade, are needed
 26 when the mitigation measures fail to stop the propagation of the accident [34]. Then, recovery measures, e.g.,
 27 the repair and restoration of the affected tanks, are carried out to recover operation and minimize the losses
 28 caused by the business interruption.

29 Figure 1 presents a conceptual model that schematically illustrates the evolution of a business process under
 30 a disruptive event. The business process is divided into four phases: protection, mitigation, emergency and
 31 recovery. Each phase is associated with the corresponding business continuity measure. As shown in Figure 1,
 32 the PPI_B of an actual business process might deviate from its nominal value due to the presence of various
 33 disruptive events. The severity and duration of the business interruption caused by the disruptive event can
 34 be controlled by implementing business continuity measures in the different phases. Among them, protection
 35 measures affect the resistance of the system to disruptive events. Mitigation and emergency measures determine
 36 how much system performance is degraded from the damage caused by the disruptive event. Recovery measures
 37 influence how quickly the system can recover to normal operation.

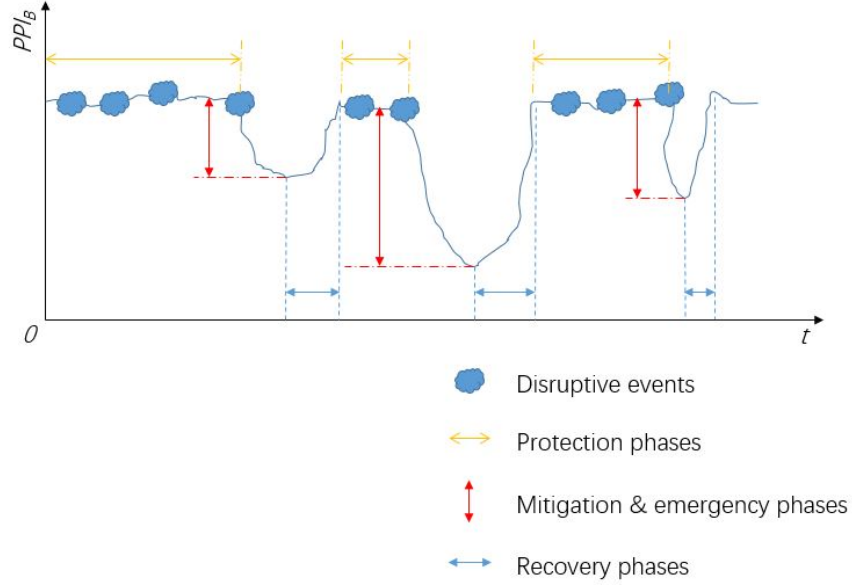


Fig. 1. A conceptual model for the business continuity process

1

III. LOSS-BASED BUSINESS CONTINUITY METRICS

2 In this section, we define a set of quantitative business continuity metrics to cover the whole business
 3 continuity process. Evidently, business (performance) continuity is inversely related to the losses caused by
 4 the disruptive event, i.e., a higher value of business continuity indicates less losses caused by the business
 5 interruption. Therefore, we define the business continuity metrics as a function of the losses due to the disruptive
 6 event.

7 Two kinds of losses are considered in this paper, i.e., direct losses and indirect losses. Direct losses, denoted
 8 by L_D , are those caused directly by the disruptive event. For example, when a lightning strike hits an oil
 9 storage tank, L_D might include the structural damage of the tank, the loss of the oil contained in the tank
 10 due to leakages in the damaged structure, and other possible losses that occur right after the lightning strikes.
 11 Indirect losses, denoted by L_I , are those incurred during the recovery process. In the previous example of the
 12 storage tank, the tank needs to be shutdown or at least operated at degraded performances during the recovery
 13 process, which causes revenue losses to the organization. Besides, L_I also includes the costs of replacing or
 14 restoring the affected tank, e.g., the costs of spare parts, maintenance personnel, etc.

15 Let L_i denote the losses caused by the i th disruptive event. The loss L_i includes direct loss and indirect loss.
 16 Therefore, we have

$$L_i = L_{D,i} + L_{I,i}, \quad (1)$$

17 where $L_{D,i}$ and $L_{I,i}$ are the direct loss and indirect loss caused by the i th disruptive event, respectively. The
 18 indirect loss, $L_{I,i}$, measures the lost profits due to the degraded performance and the potential system downtime
 19 in the recovery process. To further quantify $L_{I,i}$, it is assumed that

$$L_{I,i} = k \cdot t_{recv,i} \cdot (PPI_{B,N} - PPI_{B,i}), \quad (2)$$

1 where k is the indirect loss caused by the disruptive event per unit time per unit PPI_B ; $t_{recv,i}$ is the time that is
 2 taken to recover the business process to its nominal performance; $PPI_{B,N}$ is the nominal PPI_B for the business
 3 process and $PPI_{B,i}$ is the performance indicator of the business process after the damage of the i th disruptive
 4 event.

5 We are interested in the business continuity over a time interval $[0, T]$ (e.g., the life of the system). Suppose
 6 that the number of disruptive events that occur in $[0, T]$ is $n(T)$. From (1), the loss due to the disruptive events
 7 that occur in $[0, T]$, denoted by L_T , is

$$L_T = \sum_{i=1}^{n(T)} (L_{D,i} + L_{I,i}), \quad (3)$$

8 where $L_{D,i}$ and $L_{I,i}$ are the direct loss and indirect loss of the i th disruptive event, respectively, and $L_{I,i}$
 9 is calculated using (2). It should be noted that due to various uncertainties, the $n(T)$, $L_{D,i}$ and $L_{I,i}$ are
 10 random variables; therefore, L_T is also a random variable. Based on (3), we can define quantitative metrics for
 11 business continuity.

12 **Definition 1.** We define the Business Continuity Value (BCV) as

$$BCV = 1 - \frac{L_T}{L_{tol}} \quad (4)$$

13 where L_{tol} is the maximum loss that an organization can withstand.

14 It is easy to verify that that $BCV \in (-\infty, 1]$ and a high value of BCV indicates high business continuity. The
 15 physical meaning of (4) is the relative difference between the losses caused by the disruptive events and the
 16 maximum losses that an organization could stand. Since L_{tol} represents the maximum tolerable losses for an
 17 organization, $BCV = 0$ is a borderline case: a BCV whose value less than zero indicates that the organization
 18 might have trouble in recovering after the occurrence of the disruptive events.

19 **The relationship between BCV and PPI_B is that, the BCV is defined based on the expected losses L_T , which
 20 includes both direct losses and indirect losses, as shown in (3). The indirect losses $L_{I,i}$ are, then, determined
 21 by the value of PPI_B , according to (2). The physical meaning of (2) is to measure the revenue losses due to
 22 the potential partial operation period of the system (i.e., operating at a reduced capacity) after the strike of the
 23 disruptive events.**

24 The BCV defined in (4) is conceptually similar to a widely applied resilience metric, the resilience triangle:
 25 if we let $k = 1$ and $t_{recv,i} = 1$ in (2), the L_T in (4) is, then, equivalent to the resilience triangle metric defined
 26 in [35]. Although seems similar, the BCV differs from resilience since the concept of resilience mainly focuses
 27 on the performance degradation and recovery process, but does not relate the process to the losses suffered by
 28 the organization. The BCV, on the other hand, explicitly considers the losses and therefore, allows to evaluate
 29 the possibility of recovery from financial perspectives.

30 Since BCV is a random variable, for practical applicability, four numerical metrics, i.e., Expected Business
 31 Continuity Value (EBCV), Standard Deviation of Business Continuity Value (SDBCVC), P_{BI} and P_{BF} , are
 32 derived based on the probability distribution of BCV. EBCV is calculated as the expected value of BCV.
 33 SDBCVC is calculated as the standard deviation of BCV, to measure the variability in the BCV values.

1 The probability that disruptive events causes business interruption in the considered time interval, denoted
2 by P_{BI} , is the third numerical metrics defined in this paper:

$$P_{BI} = Pr(BCV < 1). \quad (5)$$

3 It measures the likelihood of business interruption caused by the disruptive events.

4 When the losses caused by the disruptive events are beyond tolerable, the organization might have trouble
5 recovering: this situation is called Business Failure (BF), in this paper. The probability of business failure,
6 denoted by P_{BF} , is calculated by

$$P_{BF} = Pr(BCV < 0). \quad (6)$$

7 The value of P_{BF} measures the capability that an organization **cannot** recover from potential disruptive events.

8 It should be noted that the four numerical metrics can be explained in financial terms using monetary values
9 (e.g., in U.S. dollars). For example, suppose that the organization objective of the analysis can withstand financial
10 losses up to \$100,000 (i.e., $L_T = \$100,000$) and $EBCV = 0.8$, $SDBCVCV = 0.01$, $P_{BI} = 0.8$, $P_{BF} = 0.1$:

- 11 • $EBCV = 0.8$ indicates that the organization can accept to suffer on average a financial loss of $100,000 \times$
12 $(1 - 0.8) = \$20,000$;
- 13 • $SDBCVCV$ measures the variations in the acceptable expected losses: a larger $SDBCVCV$ indicates that the
14 expected losses are subject to large variations and vice versa;
- 15 • $P_{BI} = 0.8$ indicates that with probability 0.8, the organization could suffer financial losses;
- 16 • $P_{BF} = 0.1$ indicates that with probability 0.1, the organization could suffer financial losses larger than
17 \$100,000.

18 IV. AN INTEGRATED MODELING FRAMEWORK FOR BUSINESS CONTINUITY ASSESSMENT

19 In this section, we first present an integrated modeling framework for business continuity (Section IV-A).
20 Then, a simulation-based method is developed to calculate the defined business continuity metrics (Section
21 IV-B).

22 A. The integrated modeling framework

23 To model the business process, we make the following assumptions to capture its characteristics:

- 24 1) The occurrence of disruptive events follows a homogeneous Poisson process with a rate parameter λ_{DE} .
- 25 2) The consequences of the disruptive event are classified into n discrete states with increasing degree of
26 severity, denoted by $C_{DE,0}, C_{DE,1}, \dots, C_{DE,n}$, where $C_{DE,0}$ represents the consequence state that no
27 damage is caused by the disruptive event.
- 28 3) The times it takes to recover the business process from state $C_{DE,i}$ to $C_{DE,i-1}$, denoted by $t_{recv,i}$, $i =$
29 $1, 2, \dots, n$ are independent and identically distributed random variables, with probability density func-
30 tions $f_{recv,i}(t)$.
- 31 4) The reliability of the business continuity measures does not change with time.

32 As shown in Figure 1, the business process comprises of the protection, mitigation, emergency and recovery
33 phases. Since each phase has its own characteristics, different modelling approaches are needed for different

1 phase to capture the phase-specific characteristics. An example of integrated modeling framework is presented
 2 in Figure 2. The protection, mitigation and emergency phases determine the consequences of the disruptive
 3 event. Event trees can be used to model these phases [36]. In an event tree model, the probabilities of the
 4 intermediate events represent the reliabilities/uncertainties of the allocated business continuity measures. The
 5 outcomes of protection phase and mitigation phase depend on the reliabilities of the protection and mitigation
 6 measures, respectively, which, according to Assumptions 4, do not depend on time. Then, fault tree models
 7 can be used to calculate these intermediate probabilities [36]. The result of the emergency phase, on the other
 8 hand, involves the modeling of a sequence of activities by the emergency response team. Models capable of
 9 considering the sequential dynamics of such activities should be used for the emergency phase, e.g., the event
 10 sequence diagram [37]. The recovery process also involves the dynamics of maintenance actions, which can
 11 be effectively described in terms of the process of transitions between system states, e.g., by semi-Markovian
 12 models [38].

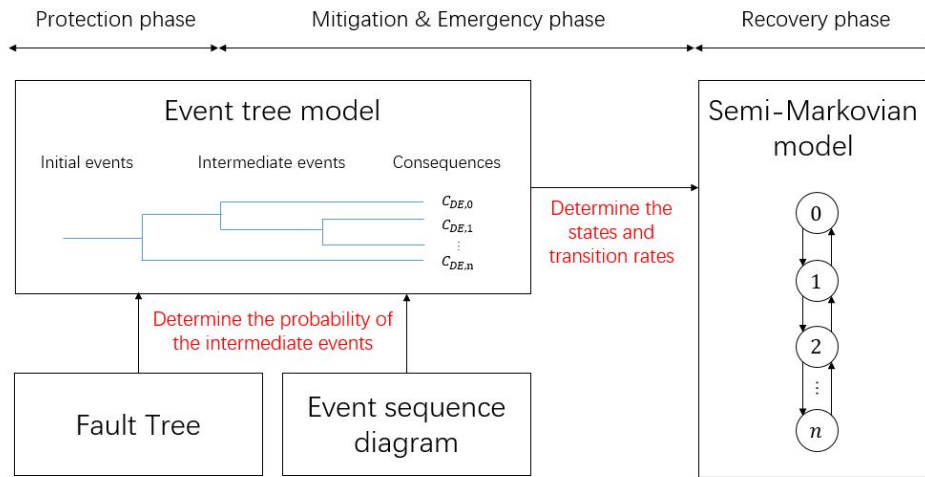


Fig. 2. An integrated model for business continuity assessment

13 1) *Event tree model for the disruptive events and consequences:* Event tree (see [36]) is used to model the
 14 disruptive events and consequences. In the event tree, the initial event is the disruptive event, which is assumed
 15 to follow a Poisson process with a rate parameter λ_{DE} . Each intermediate event represents the success or failure
 16 of a business continuity measure. The end events in the event tree represents the consequences of the disruptive
 17 events and are expressed as combinations of the states (success or failure) of the business continuity measures.
 18 The occurrence probabilities of the intermediate events associated with the protection and mitigation phases
 19 are determined by the reliability of these measures. Reliability models, e.g., Fault Tree Analysis (FTA) [36],
 20 can be used to calculate these probabilities. The occurrence probabilities of the intermediate events associated
 21 with the emergency phase, on the other hand, are calculated by the Event Sequence Diagram (ESD) [37], since
 22 the modeling of the emergency phase involves a sequence of activities taken by the emergency response team.
 23 As a result of the event tree modeling, the consequences of the disruptive event, $C_{DE,0}, C_{DE,1}, \dots, C_{DE,n}$,
 24 and the probabilities of these consequences, denoted by $P_{C_0}, P_{C_1}, \dots, P_{C_n}$, can be obtained. Based on the
 25 rule of the decomposition of Poisson processes [39], each possible consequence, $C_{DE,i}, i = 0, 1, \dots, n$, can

1 be characterized by a Poisson process with the rate $\lambda_{DE} \cdot P_{C_i}$.

2 2) *Event sequence diagram for emergency measures*: ESD is a graphical visualization tool to describe the
 3 sequence of related events [37]. It has been applied widely to model emergency actions and assess the risk of
 4 domino effects after the initial damage event [40–42]. In ESD, events are classified into four categories [42]:
 5 initial events, which are the starting point of the evolution of the emergency process, e.g., a tank catches fire;
 6 delay events, which are used to model the time required to finish a certain job in the emergency response, e.g.,
 7 the arrival of the fire brigade at the fire spot. Delay events can be further distinguished as deterministic delay
 8 events, which are used to describe a job with fixed working time, and random delay events, which are used
 9 to describe a job with random working time; comment events, which describe the development of an event
 10 sequence; and terminate events, which indicate the termination of an ESD, e.g., the occurrence /non-occurrence
 11 of domino effects.

12 Usually, ESD is used to model the escalation of accidents, i.e., domino effects, considering the presence
 13 of emergency response activities [37]. In ESD, domino effects are expressed by an event chain, starting from
 14 initial events to terminate events. The events are connected by logic gates to describe the emergency response
 15 activities. Four types of logic gates are considered in ESD, i.e., Output AND Gate, Input AND Gate, Output
 16 OR gate, Input OR gate [37]. The times associated with the output of the gates can be determined by the input
 17 times of the gate, as shown in Figure 3 [37].

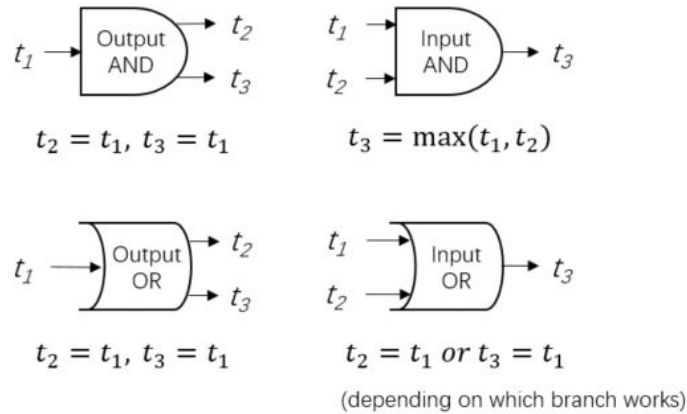


Fig. 3. Output times of the logic gates [37]

18 The probability of the domino effect, can, then, be calculated based on analytical or simulation procedures,
 19 as summarized in [37], which also determines the occurrence probability of the intermediate events associated
 20 with emergency measures in the event tree model.

21 3) *Semi-Markovian model for the recovery process*: The PPI_B of the business process is degraded by the
 22 disruptive events and recovers as a result of the recovery measures. From **Assumption 3**, the transition rates
 23 associated with the recovery process are not constant, since the recovery times do not follow exponential
 24 distribution. Hence, the evolution of the PPI_B is modeled by a semi-Markovian model [39], as shown in Figure
 25 2. In the semi-Markovian model, the states $C_{DE,i}, i = 0, 1, \dots, n$ correspond to the consequences of the
 26 disruptive events, obtained from the event tree analysis. The failure rates, $\lambda_{ij}, 0 \leq i \leq n-1, i < j$, are

1 determined based on the conditional probabilities of the consequences given the occurrence of the initial event
 2 of the event tree, which can also be yielded by the event tree analysis. According to **Assumption 3**, the recovery
 3 process is characterized by the probability density distribution of the recovery times, which should be estimated
 4 based on historical data or expert judgements.

5 Based on the developed models, the evolution of the PPI_B in the entire business process, which covers the
 6 protection, mitigation, emergency and recovery phases, can be simulated using Monte Carlo simulations [43].
 7 The business continuity metrics can, then, be estimated by further considering the losses incurred in the business
 8 process, as described in (1) - (3).

9 *B. A simulation-based method for business continuity assessment*

10 Figure 4 demonstrates how to calculate the loss L associated with the i th disruptive event by simulating the
 11 developed integrated model. In Figure 4, $PPI_{B,cur}$ and $PPI_{B,nom}$ represent the PPI_B at current time and its
 12 nominal value, respectively. From **Assumption 1**, the arrival of the disruptive events follows a homogeneous
 13 Poisson process with rate parameter λ_{DE} . Therefore, t_{disp} is generated by simulating the next arrival time
 14 of a Poisson process with the parameter λ_{DE} . When a simulated disruptive event arrives, its consequence is
 15 determined based on the consequence probabilities calculated from event tree analysis. Based on the direct
 16 damage corresponding to each consequence, the values of $PPI_{B,cur}$ and L_D are updated. From **Assumption 3**,
 17 the recovery time t_{recv} can be generated from the probability density function $f_{recv,i}(t)$. When a recovery event
 18 occurs, the $PPI_{B,cur}$ is updated first, based on the effectiveness of the recovery process. Then, the indirect
 19 loss, L_I , is updated by considering the time spent in the previous degraded state.

20 The algorithm in Figure 4 is repeated N times and the empirical distribution of the BCV can be estimated
 21 based on these samples using (4). The numerical business continuity metrics defined in Section III can, then,
 22 be calculated from the empirical distribution of the BCV.

23

V. APPLICATION

24 *A. System descriptions*

25 In this section, we consider the crude oil storage tank farm originally reported in [34] as a case study, and
 26 apply the developed modeling framework to assess its business continuity. The tank farm is located in Tianjin,
 27 China, and its layout is illustrated in Figure 5 [34]. Ten External Floating Roof (EFR) storage tanks make up
 28 the tank farm, which is used to store crude oil. Each tank is 21.8 (m) in height and has a diameter of 80 (m).
 29 The main material of the floating roof and tank wall is #16 steel, whose thicknesses are 5 (mm) and 35 mm,
 30 respectively. The capacity of a single tank is 1×10^5 (m^3) and therefore, the tank farm has a total capacity
 31 of 1×10^6 (m^3) [34]. **To remain operational at full capacity, all of the ten tanks must be in working state.**
 32 **Therefore, the number of working tanks is used as the PPI_B of the tank farm.**

33 The business continuity assessment starts from the identification of potential disruptive events. According to
 34 [31, 44], lightning is the most frequently encountered disruptive event that could damage storage tanks. Hence,
 35 for illustrative purposes, we only consider lightning as the potential disruptive event in this paper. For an EFR
 36 tank that stores crude oil, two typical accident scenarios might be caused by lightning [34]:

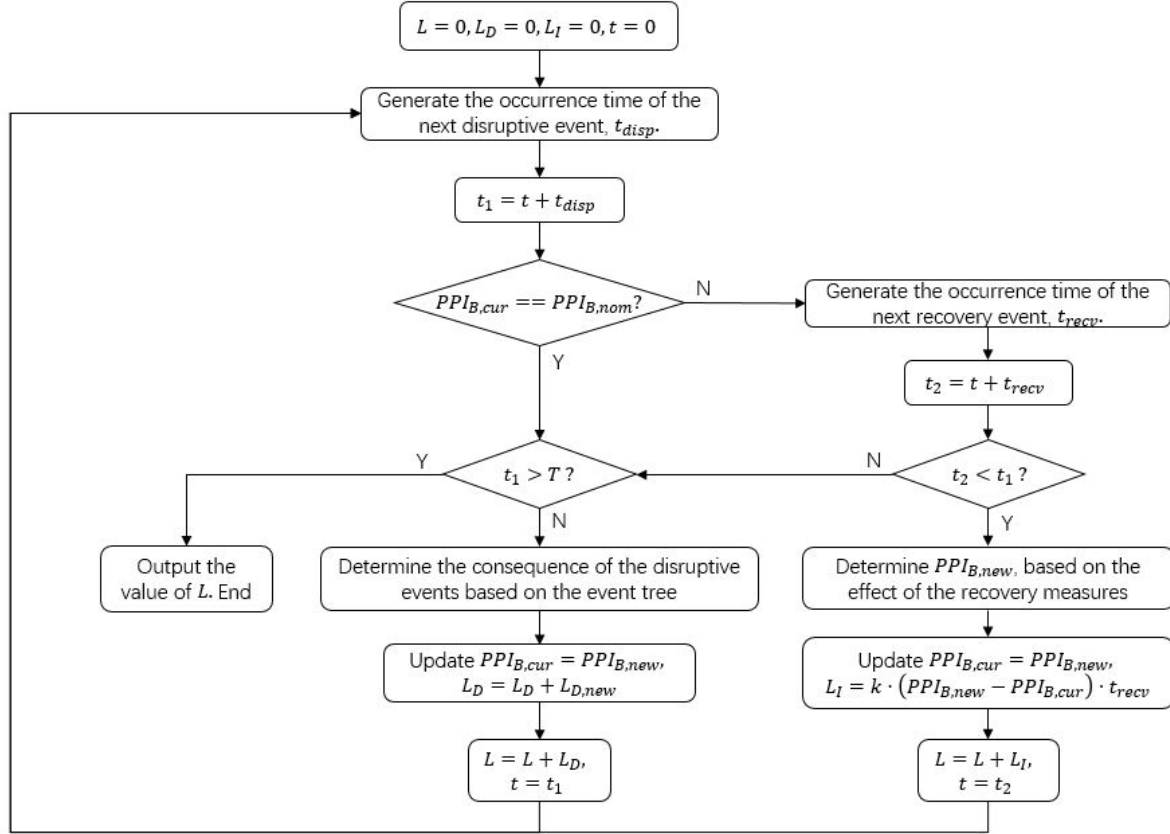


Fig. 4. A simulation-based method to calculate the loss caused by a single disruptive event

- 1 • direct puncturing of the tank wall, which leads to leakage and possible ignition of the leaked crude oil
- 2 (pool fire);
- 3 • rim-seal fire, which is caused by the ignition of the flammable vapors by the lightning (full surface fire).
- 4 Both scenarios can escalate to cause more severe consequences and losses if not contained properly and promptly,
- 5 as shown in Figure 6. For a detailed discussion on the escalation of the accident scenarios depicted in Figure
- 6 6, readers can refer to [34] and [32]. Protection, mitigation, emergency and recovery measures are designed to
- 7 ensure the business continuity of the tank farm, as shown in Table I [32, 34].

8 B. Event tree model for the disruptive events and consequences

9 An event tree model is constructed in Figure 7 for a single tank throughout the protection, mitigation and

10 emergency phases. In Figure 7, the initial event, a lightning striking the tank farm, is assumed to follow a

11 Poisson process with rate λ_L ; P_{pro} is the probability that the protection mast successfully prevents the lightning

12 from damaging the tank; P_{DD} is the probability that the arrived lightning strike results in a direct damage to the

13 tank; P_{FV} is the probability that flammable vapors exist in the rim area. According to [34], flammable vapors

14 are always present in the rim area of EFR tanks; therefore, we assume $P_{FV} = 1$; P_{AFES} is the probability that

15 the automatic rim seal fire extinguishing system operates normally so that a rim-seal fire could be extinguished

16 promptly; P_{FFS} is the probability that the fixed foam system operates normally so that a full surface fire could

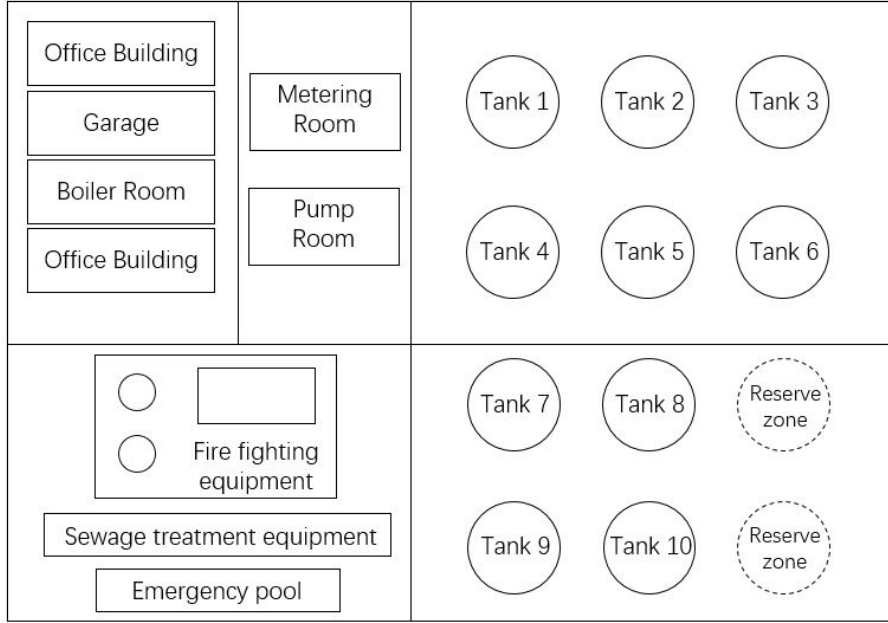


Fig. 5. Layout of the crude oil storage tank farm [34]

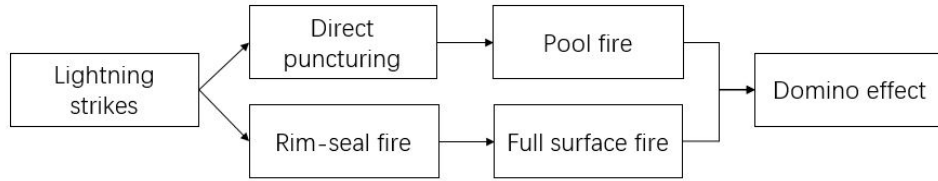


Fig. 6. Escalation of accident scenarios

1 be extinguished promptly; P_{FB} is the probability that the fire brigade arrives in time and works correctly so
 2 that the fires can be controlled before domino effects develop.

3 1) *Determination of λ_L* : According to [45], the arrival rate of the lightning strikes on a single tank can be
 4 calculated by

$$\lambda_S = N_G \cdot A_D \cdot C_D \times 10^{-6}. \quad (7)$$

5 In (7), N_G is the arrival rate of the lightning strikes per year per kilometer ($km^{-2} \cdot y^{-1}$); A_D is the equivalent
 6 receiving area (m^2) for the storage tank. Suppose R and H denote the radius and height of the tank, respectively.

7 Then A_D is calculated by

$$A_D = \pi(R + 3H)^2 \quad (8)$$

8 The value of C_D , which represents the location factor of the building, can be determined from Table II [45].

In this case study, the N_G of Tianjin is estimated to be $2.82/km^2 \cdot y$ [34]. For each tank in the farm,

$$R = 40 \text{ (m)}, \quad H = 21.8 \text{ (m)}.$$

Therefore, we have $A_D = 3.49 \times 10^4$. Since the tanks are obviously higher than the surrounding objects, we

TABLE I
THE BUSINESS CONTINUITY MEASURES OF THE TANK FARM

Category	Measures	Descriptions
Protection measures	Lightning protection mast	Lightning protection mast is used to protect the oil storage tank from damages caused by lightning.
Mitigation measures	Automatic rim seal fire extinguishing system	Automatic rim seal fire extinguishing system can detect and automatically fight against the rim-seal fire.
	Fixed foam system	Fixed foam system is automatically activated if the pool fire develops to full surface fire and aims at extinguishing full surface fires.
Emergency measures	Fire brigade	Fire brigade is the last defensive barrier to control the fire and prevent it from escalating to other tanks.
Recovery measures	Restore and / or replace the damaged tanks	The storage capability of the tank farm can be recovered by restoring or replacing the damaged tanks.

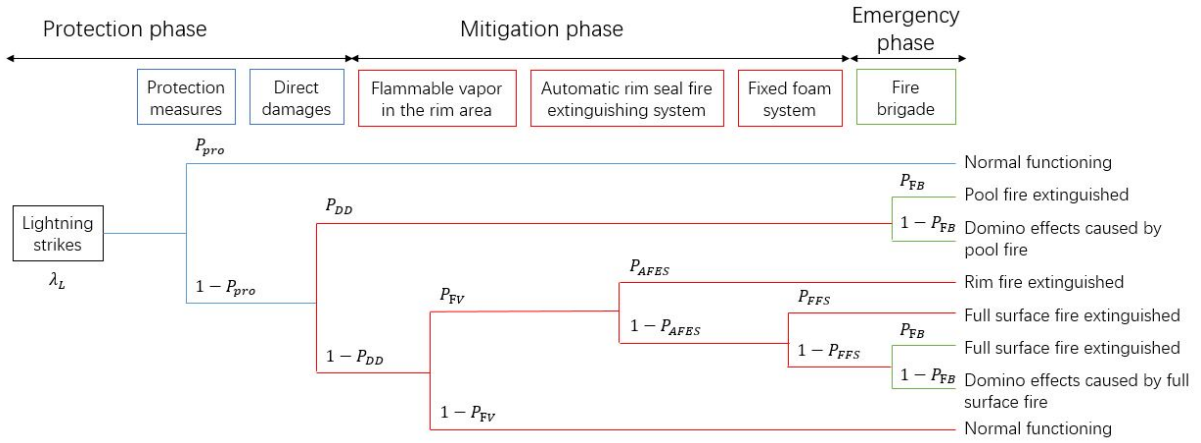


Fig. 7. Event tree model for the protection, mitigation and emergency phases

have $C_D = 1$. From (7), $\lambda_S = 9.842 \times 10^{-4} (y^{-1})$. Finally, λ_L is determined by

$$\lambda_L = n \cdot \lambda_S,$$

1 where n is the number of working tanks. Therefore, we have $\lambda_S = 9.842 \times 10^{-3} (y^{-1})$.

2 2) *Determination of P_{pro}* : Reference [33] develops a “capture model” to simulate the number of lightning
3 strikes captured by a storage tank with known geometry. Based on the “capture model” and Monte Carlo

TABLE II
VALUES FOR C_D

Exposure degree of buildings and surrounding objects	C_D
Obviously lower than surrounding objects	0.25
Approach to surrounding objects	0.5
Obviously higher than surrounding objects	1
Isolated buildings on the hill	2

1 simulations, the reduction rate of the captured lightning strikes after the implementation of the protection masts
 2 can be assessed, which is equivalent to the P_{pro} in this paper [46, 47]. Based on their results, given the geometry
 3 of the storage tanks and the design information of the protection masts, the value of P_{pro} is $P_{pro} = 0.996$ [47].
 4 3) *Determination of P_{DD}* : Direct damage of the tank is caused by the heat generated by the lightning strikes,
 5 which primarily depends on the peak current of the captured lightning strike. The generated heat would lead to
 6 the formation of hemispherical grooves on the walls or roofs of the tank [34]. If the amount of the generated
 7 heat is large enough, the radius of the grooves might be greater than the thickness of the walls or roofs, and
 8 leads to the perforation of them. Reference [48] points out that to cause direct perforation, the peak current
 9 of the captured lightning strike needs to exceed a threshold value, denoted by I_{th} , which is dependent on the
 10 thickness of the tank wall or roof, as shown in Table III.

TABLE III
 I_{th} FOR DIFFERENT THICKNESSES OF TANK WALLS [48]

Thickness / mm	4	5	6	7	8	9	10
I_{th} / kA	95	158	273	442	666	943	1276

11 Reference [34] proposes an empirical relationship to calculate the probability that the peak current I_{peak} is
 12 greater than I ,

$$\lg P(I_{peak} > I) = -\frac{I}{88}. \quad (9)$$

13 In this case study, the thickness of the tank wall is 35 (mm) and the thickness of the roof is 5 (mm). Since the
 14 thickness of the tank wall is much higher than that of the roof, we only consider the possibility of the perforation
 15 of the roof in this paper. From Table III, $I_{th} = 158$ (kA); substituting it into (9), we have $P_{DD} = 1.6 \times 10^{-2}$
 16 for the tanks in this case study.

17 4) *Determination of P_{AFES} and P_{FFS}* : The failure probabilities of similar AFES and FFS systems have
 18 been analyzed by Necci in [32], using fault tree analysis. Here, we use the reference values of P_{AFES} and
 19 P_{FFS} from [32], i.e., $P_{AFES} = 0.976$, $P_{FFS} = 0.993$.

20 5) *Determination of P_{FB}* : Fire brigade is the last safety barrier to prevent the fire from spreading to nearby
 21 tanks. If fire brigade fails to respond promptly and correctly, domino effects might arise, causing severe damages
 22 and losses. According to [37], the value of P_{FB} can be determined by the total response time of the fire
 23 brigade, denoted by T_{res} , which accounts for the whole duration from the occurrence of the initial fire to its
 24 extinguishment by the fire brigade. Cozzani et al. [49] proposed that to stop the full surface fire from spreading
 25 to the nearby tanks, the fire needs to be put off within $T_{th} = 17$ (min).

An ESD similar to that in [37] is constructed to describe the sequential behavior of the fire brigade, as
 shown in Figure 8. According to the survey in [50], the $T_i, i = 1, 2, \dots, 5$ follow lognormal distributions with
 the parameters summarized in Table IV, where e and m are parameters of the lognormal distribution, whose
 probability density function is

$$f(x) = \begin{cases} \frac{1}{\sqrt{2\pi}\sigma x} e^{-\frac{(\ln(x)-e)^2}{2m^2}}, & x > 0 \\ 0, & x \leq 0. \end{cases}$$

26 Then, the value of P_{FB} is calculated by Monte Carlo simulations, i.e., $P_{FB} = 0.693$.

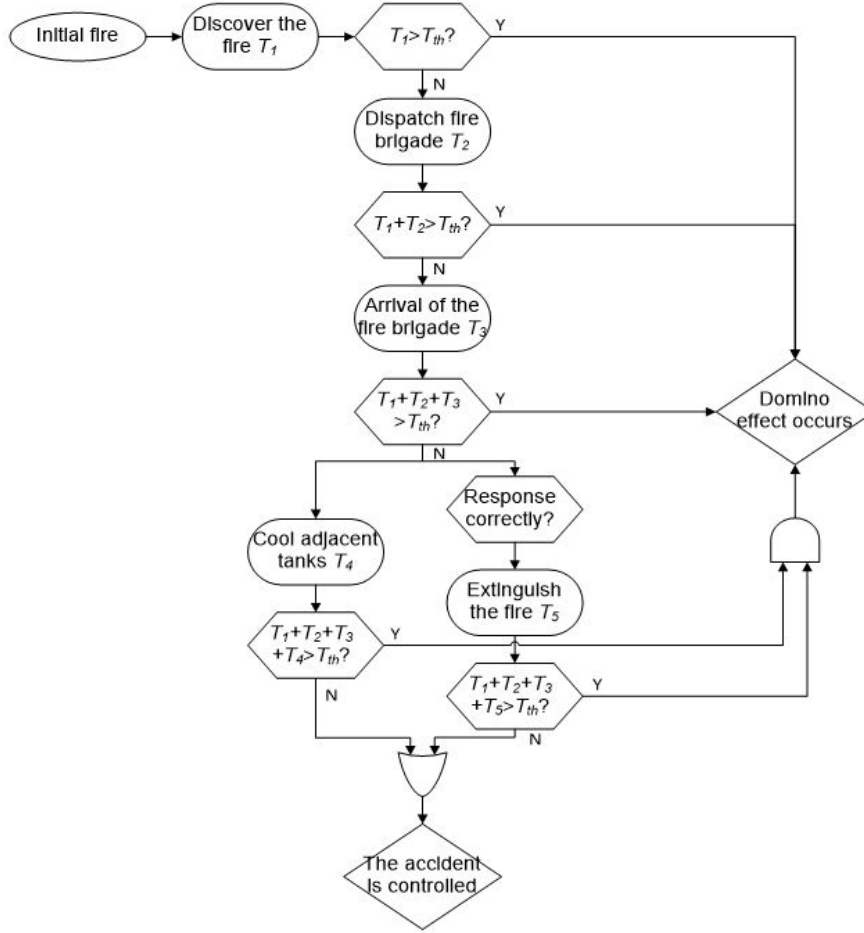


Fig. 8. Event sequence diagram of the emergency responses

TABLE IV
THE DISTRIBUTION OF THE EVENTS IN THE EVENT SEQUENCE DIAGRAM [50]

Event	e	m
T_1	1.30	0.40
T_2	0.88	0.78
T_3	1.56	0.31
T_4 / T_5	1.20	0.34

1 6) Calculate the probability of the consequences: Following the rules of event tree analysis [36], the
 2 conditional probability of each consequence given the occurrence of the initial event can be calculated, as
 3 shown in Table V.

4 C. Semi-Markovian model for the recovery process

5 The consequences C_1, C_2, \dots, C_6 , listed in Table V, can be further grouped into three categories, based on
 6 the number of affected storage tanks, as shown in Table VI. When the consequence of the lightning strike is
 7 C_6 , there is no storage tank affected by the lightning. When the consequence of the lightning strike is C_1, C_3
 8 or C_4 , there are local damages to the hit tank, without spreading to domino effects: therefore, only one tank

TABLE V
THE PROBABILITIES OF THE CONSEQUENCES

Symbols	Consequence	Descriptions	$P_i = P(C_i \text{a lightning strike has occurred})$
C_1	Pool fire extinguished	A pool fire has occurred and extinguished; Local damage is caused to the tank hit by the lightning.	$P_1 = (1 - P_{pro})P_{DD}P_{FB}$
C_2	Domino effect caused by pool fire	Fire spread to the neighboring tanks; Damages are caused to the tank where the fire started and the four neighboring tanks.	$P_2 = (1 - P_{pro})P_{DD}(1 - P_{FB})$
C_3	Rim seal fire extinguished	A rim seal fire has occurred and extinguished; Local damage is caused to the tank where the incident occurs.	$P_3 = (1 - P_{pro})(1 - P_{DD})P_{FV}P_{AFES}$
C_4	Full surface fire extinguished	A full surface fire has occurred and extinguished; Local damage is caused to the tank where the incident occurs.	$P_4 = (1 - P_{pro})(1 - P_{DD})P_{FV}(1 - P_{AFES})(P_{FFS} + (1 - P_{FFS})P_{FB})$
C_5	Domino effect caused by full surface fire	Fire spread to the neighboring tanks; Damages are caused to the tank where the fire started and the four neighboring tanks.	$P_5 = (1 - P_{pro})(1 - P_{DD})P_{FV}(1 - P_{AFES})(1 - P_{FFS}(1 - P_{FB}))$
C_6	Normal functioning	No damages are caused to any tank.	$P_6 = P_{pro} + (1 - P_{pro})(1 - P_{DD})(1 - P_{FV})$

1 is affected. When the consequence of the lightning strike is C_2 or C_5 , the fire caused by the lightning spreads
2 to the nearby tanks and domino effects are caused. In this paper, we assume that if domino effects occur, the
3 number of affected tanks is 5.

TABLE VI
CLASSIFICATION OF THE CONSEQUENCES

Category	Consequences	Descriptions	Affected tanks
S_1	C_6	Normal functioning	0
S_2	C_1, C_3, C_4	Pool fire extinguished; rim seal fire extinguished; full surface fire extinguished	1
S_3	C_2, C_5	Domino effects caused by pool fire; domino effects caused by full surface fire	5

4 The number of available tanks is used as the PPI_B of the business process for the tank farm. When a tank is
5 hit by the lightning or affected by domino effects, it becomes unavailable until it is repaired. Recovery measures
6 should be performed to replace or restore the affected tank, so that it could return to normal operations. The
7 behavior of the PPI_B is described in the state diagram in Figure 9, where the states represent the number
8 of available tanks. As shown in Table VI, the PPI_B might degrade in two manners, i.e., either by S_2 or
9 by S_3 . Since the arrival of lightning strikes follows a homogeneous Poisson process with a rate λ_L , the
10 transition rates associated with S_2 and S_3 are determined by the decomposition of Poisson processes [39], i.e.,
11 $\lambda_2 = P_{S_2}\lambda_L, \lambda_3 = P_{S_3}\lambda_L$. According to Table V and VI, $P_{S_2} = P_1 + P_3 + P_4, P_{S_3} = P_2 + P_5$. In this paper,
12 for brevity, we just assume that only one tank can be repaired at a time and the recovery time t_{recv} follows
13 a LogNormal distribution with a mean value 30 (d) and a standard deviation 5 (d). Since the transition rates

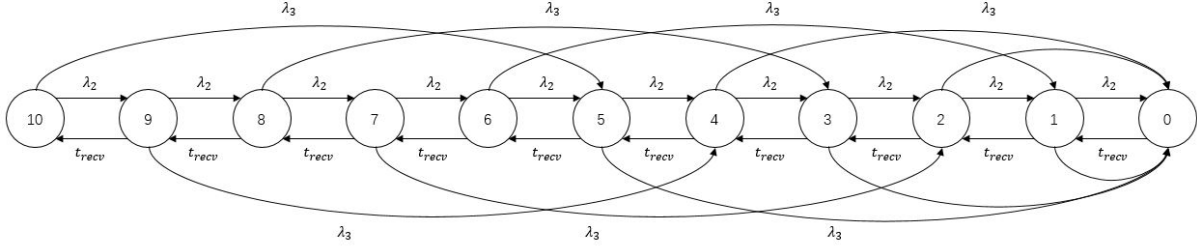


Fig. 9. Behavior of the PPI_B under the threat of lightning

1 of the recovery process are not constant while the transition rates of the degradation process are, the dynamics
 2 of the PPI_B , as described in Figure 9, follow a Semi-Markovian process. Simulation-based methods, such as
 3 those in [38], can be exploited to investigate the time-dependent behavior of the PPI_B .

4 D. Loss modeling and business continuity assessment

5 The losses an organization might suffer from the disruptive events include the direct losses and the indirect
 6 losses. In this case study, the direct losses depend on the number of affected tanks, denoted by n :

$$L_{D,i} = n \cdot k_{LD}, \quad (10)$$

7 where k_{LD} is the average direct damage per tank caused by lightning and domino effect. In this case study,
 8 for illustrative purposes, we assume that $k_{LD} = 6$ (in arbitrary units) per tank.

9 The indirect losses are calculated using (2), where the number of available tanks is used as the PPI_B of the
 10 tank farm and the nominal PPI_B is 10. The indirect constant k is assumed to be 0.25 units per day per tank.
 11 That is, if n tanks are unavailable for N days, the organization would suffer $0.25 \times (10 - n) \times N$ units of
 12 indirect losses. The value of L_{tol} , which represents the maximum loss that an organization could withstand,
 13 should be determined considering the financial conditions of the organization. For the tank farm, we assume
 14 $L_{tol} = 15$ units for illustrative purposes. The simulation-based methods that are developed in Section IV-B
 15 are used to calculate the quantitative business continuity metrics, with a sample size of 10^6 . The results and
 16 discussions are given in the next subsection.

17 E. Results and discussions

18 The results of the simulation are summarized in Figure 10, which displays the empirical distribution of BCV.
 19 BCV values are mainly distributed in four regions (Region 1 - Region 4 in Figure 10):

- 20 • Most of the samples have a BCV equal to 1 (Region 1 in Figure 10), which indicates that no business
 21 interruption has been caused by the lightning (either no lightning strike hits the tank farm or the consequence
 22 of the lightning strike has been blocked by the protection measures so that no damage is caused).
- A closer examination at the samples that fall in Region 2 in Figure 10 reveals that for these samples, the
 lightning strike hits a tank and makes it catch fire. The fire is controlled promptly so that no domino effect
 results, which corresponds to state S_2 in Table VI. Moreover, the recovery process is smooth: no lightning

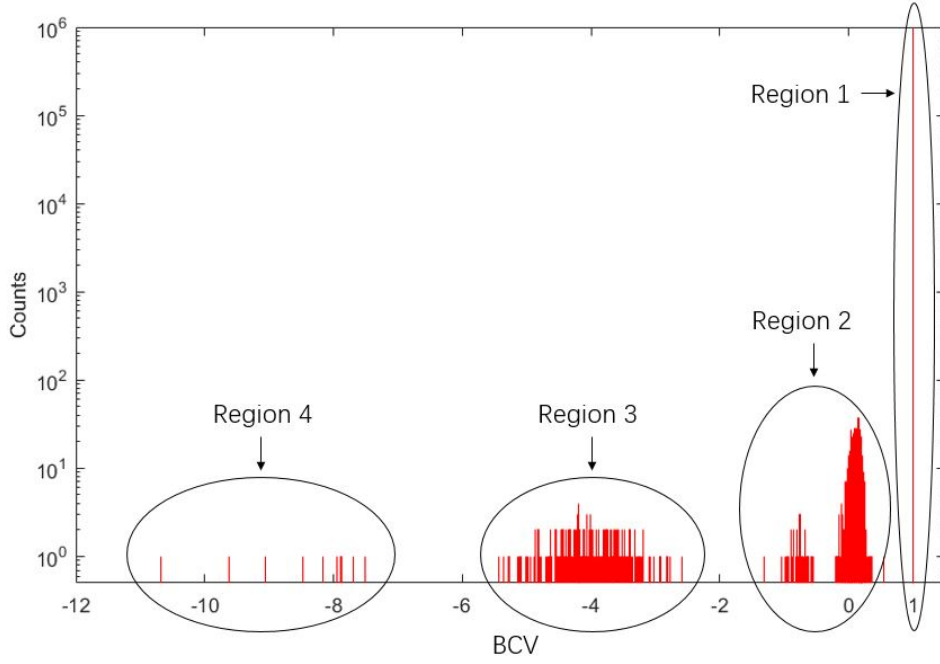


Fig. 10. Histogram of the BCV

strike hits the fire tank during the recovery process. Therefore, the mean value of BCV in this region is

$$1 - \frac{1 \times 6 + 0.25 \times 30}{15} = 0.867.$$

1 The scatter of this region is due to the variability of the recovery time.

- A similar analysis is done to the samples in Region 3. Most of the samples in this region suffer from domino effects (the state S_3 in Table VI). Therefore, the affected number of the storage tanks is 5. Moreover, the recovery process is smooth: no lightning strike hits the fire tank during the recovery process. Hence, the mean value of BCV in this region is

$$1 - \frac{5 \times 6 + 5 \times 0.25 \times 30}{15} = -3.5.$$

2 The scatter of this region is again due to the variability of the recovery time.

- The samples that fall in Region 4 suffer from more severe damages. For example, two or more lightning strikes hit the tank farm and cause domino effects. Therefore, there samples have much lower and more spread BCV values than in the previous cases.

The four numerical business continuity metrics can be calculated based on the simulation results:

$$\mathbf{EBCV = 0.9783, SDBC\mathbf{V} = 0.2203, P_{BI} = 1.78 \times 10^{-2}, P_{BF} = 4.10 \times 10^{-3}.$$

6 For this case study, given the related assumptions and numerical values used for the parameters, we can conclude
7 with high confidence that the tank farm would demonstrate high business continuity under the threat of lightning.

8 VI. CONCLUSION

9 This paper focuses on the quantitative modeling and assessment of business continuity. A conceptual model
10 that divides the business process into four sequential phases, protection, mitigation, emergency and recovery, is

1 proposed as a foundation of the metrics and models for business continuity assessment. An integrated framework
 2 is developed to model business continuity. In the integrated model, the protection, mitigation and emergency
 3 phases are modeled by event tree models, where fault trees and event sequence diagrams are exploited for the
 4 characterization of the probabilities associated with the intermediate events. The recovery phase is modeled by
 5 a semi-Markovian model. A simulation-based method is developed to calculate the business continuity metrics
 6 based on the developed models. A case study on a crude oil storage tank farm demonstrates the applicability
 7 of the modeling framework.

8 In this paper, we only considered the system subject to a single disruptive event. In the future, the framework
 9 should be extended to multiple disruptive events. Moreover, we rely on event trees to describe the protection,
 10 mitigation and emergency phases. Since the event tree is a static model, it cannot capture the time-dependent
 11 dynamics and the dependencies among the events. In the future, more advanced models, such as Bayesian
 12 Networks, can be integrated into the framework to more realistically model some aspects of the business
 13 continuity. A framework can also be developed to identify major contributors to business continuity and
 14 determine optimal design solutions, so that the required business continuity can be achieved under the constraint
 15 of time and resources.

16 REFERENCES

- 17 [1] E. Zio, "Challenges in the vulnerability and risk analysis of critical infrastructures," *Reliability Engineering*
 18 *and System Safety*, vol. 152, pp. 137–150, 2016.
- 19 [2] A. Hameed, F. Khan, and S. Ahmed, "A risk-based shutdown inspection and maintenance interval esti-
 20 mation considering human error," *PROCESS SAFETY AND ENVIRONMENTAL PROTECTION*, vol. 100,
 21 pp. 9–21, MAR 2016.
- 22 [3] Y. Meng, C. Lu, Y. Yan, L. Shi, and J. Liu, "Method to analyze the regional life loss risk by airborne
 23 chemicals released after devastating earthquakes: A simulation approach," *PROCESS SAFETY AND*
 24 *ENVIRONMENTAL PROTECTION*, vol. 94, pp. 366–379, MAR 2015.
- 25 [4] G. L. L. Reniers and A. Audenaert, "Preparing for major terrorist attacks against chemical clusters: Intel-
 26 ligently planning protection measures w.r.t. domino effects," *PROCESS SAFETY AND ENVIRONMENTAL*
 27 *PROTECTION*, vol. 92, pp. 583–589, NOV 2014.
- 28 [5] T. Aven and L. A. Cox, "National and global risk studies: How can the field of risk analysis contribute?,"
 29 *Risk Analysis*, vol. 36, no. 2, pp. 186–190, 2016.
- 30 [6] E. Zio, "Critical infrastructures vulnerability and risk analysis," *European Journal for Security Research*,
 31 pp. 1–18, 2016.
- 32 [7] M. Yang, F. Khan, L. Lye, and P. Amyotte, "Risk assessment of rare events," *PROCESS SAFETY AND*
 33 *ENVIRONMENTAL PROTECTION*, vol. 98, pp. 102–108, NOV 2015.
- 34 [8] M. Yang, F. Khan, and P. Amyotte, "Operational risk assessment: A case of the Bhopal disaster," *PROCESS*
 35 *SAFETY AND ENVIRONMENTAL PROTECTION*, vol. 97, pp. 70–79, SEP 2015.
- 36 [9] F. Khan, S. Rathnayaka, and S. Ahmed, "Methods and models in process safety and risk management: Past,
 37 present and future," *PROCESS SAFETY AND ENVIRONMENTAL PROTECTION*, vol. 98, pp. 116–147,
 38 NOV 2015.

- 1 [10] T. Bjerga and T. Aven, "Some perspectives on risk management: A security case study from the oil and gas
2 industry," *Proceedings of the Institution of Mechanical Engineers, Part O: Journal of Risk and Reliability*,
3 2016.
- 4 [11] "Costs and scope of unplanned outages." [http://http://www.evolver.com/blog/
5 costs-and-scope-of-unplanned-outages.html](http://http://www.evolver.com/blog/costs-and-scope-of-unplanned-outages.html).
- 6 [12] "Downtime, outages and failures - understanding their true costs." [http://http://www.evolver.com/blog/
7 downtime-outages-and-failures-understanding-their-true-costs.html](http://http://www.evolver.com/blog/downtime-outages-and-failures-understanding-their-true-costs.html).
- 8 [13] V. Cerullo and M. J. Cerullo, "Business continuity planning: a comprehensive approach," *Information
9 Systems Management*, vol. 21, no. 3, pp. 70–78, 2004.
- 10 [14] International Organization for Standardization (ISO), "Societal security – business continuity management
11 systems," 2012.
- 12 [15] B. Herbane, "The evolution of business continuity management: A historical review of practices and
13 drivers," *Business history*, vol. 52, no. 6, pp. 978–1002, 2010.
- 14 [16] G. A. Zsidisin, S. A. Melnyk, and G. L. Ragatz, "An institutional theory perspective of business continuity
15 planning for purchasing and supply management," *International journal of production research*, vol. 43,
16 no. 16, pp. 3401–3420, 2005.
- 17 [17] C. Castillo, "Disaster preparedness and business continuity planning at boeingan integrated model," *Journal
18 of Facilities Management*, vol. 3, no. 1, pp. 8–26, 2005.
- 19 [18] F. Gibb and S. Buchanan, "A framework for business continuity management," *International Journal of
20 Information Management*, vol. 26, no. 2, pp. 128–141, 2006.
- 21 [19] S. Snedaker, *Business continuity and disaster recovery planning for IT professionals*. Newnes, 2013.
- 22 [20] K. Randeree, A. Mahal, and A. Narwani, "A business continuity management maturity model for the uae
23 banking sector," *Business Process Management Journal*, vol. 18, no. 3, pp. 472–492, 2012.
- 24 [21] D. Faertes, "Reliability of supply chains and business continuity management," *Procedia Computer Science*,
25 vol. 55, pp. 1400–1409, 2015.
- 26 [22] N. Sahebjamnia, S. A. Torabi, and S. A. Mansouri, "Integrated business continuity and disaster recovery
27 planning: Towards organizational resilience," *European Journal of Operational Research*, vol. 242, no. 1,
28 pp. 261–273, 2015.
- 29 [23] G. Parise, E. Hesla, L. Parise, and R. Pennacchia, "Switching procedures and business continuity
30 management: The flock logic of multiple source systems," *IEEE TRANSACTIONS ON INDUSTRY
31 APPLICATIONS*, vol. 52, no. 1, pp. 60–66, 2016.
- 32 [24] S. A. Torabi, R. Giahi, and N. Sahebjamnia, "An enhanced risk assessment framework for business
33 continuity management systems," *Safety Science*, vol. 89, pp. 201–218, 2016.
- 34 [25] M. Rabbani, H. R. Soufi, and S. A. Torabi, "Developing a two-step fuzzy costbenefit analysis for strategies
35 to continuity management and disaster recovery," *Safety Science*, vol. 85, pp. 9–22, 2016.
- 36 [26] W. Boehmer, C. Brandt, and J. F. Groote, "Evaluation of a business continuity plan using process algebra
37 and modal logic," in *Science and Technology for Humanity (TIC-STH), 2009 IEEE Toronto International
38 Conference*, Science and Technology for Humanity (TIC-STH), 2009 IEEE Toronto International Confer-
39 ence, pp. 147–152, IEEE, 2009.

- 1 [27] C. Brandt, F. Hermann, and T. Engel, "Modeling and reconfiguration of critical business processes for
2 the purpose of a business continuity management respecting security, risk and compliance requirements at
3 credit suisse using algebraic graph transformation," in *Enterprise Distributed Object Computing Conference*
4 *Workshops, 2009. EDOCW 2009. 13th*, Enterprise Distributed Object Computing Conference Workshops,
5 2009. EDOCW 2009. 13th, pp. 64–71, IEEE, 2009.
- 6 [28] Y. Asnar and P. Giorgini, "Analyzing business continuity through a multi-layers model," in *Business*
7 *Process Management*, Business Process Management, pp. 212–227, Springer, 2008.
- 8 [29] E. C. Bonafede, P. Cerchiello, and P. Giudici, "Statistical models for business continuity management,"
9 *Journal of Operational Risk*, vol. 2, no. 4, pp. 79–96, 2007.
- 10 [30] Y. Tan and S. Takakuwa, "Use of simulation in a factory for business continuity planning," *International*
11 *Journal of Simulation Modelling*, vol. 10, no. 1, pp. 17–26, 2011.
- 12 [31] J. I. Chang and C.-C. Lin, "A study of storage tank accidents," *Journal of loss prevention in the process*
13 *industries*, vol. 19, no. 1, pp. 51–59, 2006.
- 14 [32] A. Necci, F. Argenti, G. Landucci, and V. Cozzani, "Accident scenarios triggered by lightning strike on
15 atmospheric storage tanks," *Reliability Engineering and System Safety*, vol. 127, pp. 30–46, 2014.
- 16 [33] A. Necci, G. Antonioni, V. Cozzani, E. Krausmann, A. Borghetti, and C. Alberto Nucci, "A model for
17 process equipment damage probability assessment due to lightning," *Reliability Engineering and System*
18 *Safety*, vol. 115, pp. 91–99, 2013.
- 19 [34] D. Wu and Z. Chen, "Quantitative risk assessment of fire accidents of large-scale oil tanks triggered by
20 lightning," *Engineering Failure Analysis*, vol. 63, pp. 172–181, 2016.
- 21 [35] M. Bruneau, S. E. Chang, R. T. Eguchi, G. C. Lee, T. D. O'Rourke, A. M. Reinhorn, M. Shinozuka,
22 K. Tierney, W. A. Wallace, and D. von Winterfeldt, "A framework to quantitatively assess and enhance
23 the seismic resilience of communities," *Earthquake spectra*, vol. 19, no. 4, pp. 733–752, 2003.
- 24 [36] E. Zio, *An introduction to the basics of reliability and risk analysis*, vol. 13. World scientific, 2007.
- 25 [37] J. Zhou, G. Reniers, and N. Khakzad, "Application of event sequence diagram to evaluate emergency
26 response actions during fire-induced domino effects," *Reliability Engineering and System Safety*, vol. 150,
27 pp. 202–209, 2016.
- 28 [38] M. Compare, F. Martini, S. Mattafirri, F. Carlevaro, and E. Zio, "Semi-markov model for the oxidation
29 degradation mechanism in gas turbine nozzles," *IEEE Transactions on Reliability*, vol. 65, no. 2, pp. 574–
30 581, 2016.
- 31 [39] S. M. Ross, *Introduction to probability models*. Academic press, 2014.
- 32 [40] A. Necci, V. Cozzani, G. Spadoni, and F. Khan, "Assessment of domino effect: State of the art and research
33 needs," *Reliability Engineering and System Safety*, vol. 143, pp. 3–18, 2015.
- 34 [41] B. Abdolhamidzadeh, C. R. C. Hassan, M. D. Hamid, S. FarrokhMehri, N. Badri, and D. Rashtchian,
35 "Anatomy of a domino accident: Roots, triggers and lessons learnt," *Process Safety and Environmental*
36 *Protection*, vol. 90, no. 5, pp. 424–429, 2012.
- 37 [42] S. Swaminathan and C. Smidts, "The event sequence diagram framework for dynamic probabilistic risk
38 assessment," *Reliability Engineering and System Safety*, vol. 63, no. 1, pp. 73–90, 1999.
- 39 [43] E. Zio, *The Monte Carlo simulation method for system reliability and risk analysis*. Springer, 2013.

- 1 [44] E. Renni, E. Krausmann, and V. Cozzani, "Industrial accidents triggered by lightning," *Journal of*
2 *Hazardous Materials*, vol. 184, no. 1-3, pp. 42–48, 2010.
- 3 [45] International Electrotechnical Commission (IEC), "Protection against lightning," 2010.
- 4 [46] A. Necci, G. Antonioni, V. Cozzani, A. Borghetti, and C. A. Necci, "Reduction of natech risk due to
5 lightning by the use of protection systems," *Chemical Engineering Transactions*, 2014.
- 6 [47] A. Necci, G. Antonioni, V. Cozzani, A. Borghetti, and C. A. Nucci, "Quantification of risk reduction due
7 to the installation of different lightning protection solutions for large atmospheric storage tanks," *Chemical*
8 *Engineering Transactions*, 2013.
- 9 [48] DEHN, "Lightening protection guide, 2nd edition," 2014.
- 10 [49] V. Cozzani, G. Gubinelli, G. Antonioni, G. Spadoni, and S. Zanelli, "The assessment of risk caused by
11 domino effect in quantitative area risk analysis," *Journal of hazardous Materials*, vol. 127, no. 1, pp. 14–30,
12 2005.
- 13 [50] P. Chen, "The statistics law of fire response time and its correlation with the scale of urban fire," *University*
14 *of Science and Technology of China*, 2010.