



**HAL**  
open science

## Metabolic diversity among main microorganisms inside an arsenic-rich ecosystem revealed by meta-and proteo-genomics

P.N. Bertin, A. Heinrich-Salmeron, E. Pelletier, F. Goulhen-Chollet, F. Arsène-Ploetze, S. Gallien, Béatrice Lauga, C. Casiot, A. Calteau, David Vallenet, et al.

### ► To cite this version:

P.N. Bertin, A. Heinrich-Salmeron, E. Pelletier, F. Goulhen-Chollet, F. Arsène-Ploetze, et al.. Metabolic diversity among main microorganisms inside an arsenic-rich ecosystem revealed by meta-and proteo-genomics. *The International Society of Microbiological Ecology Journal*, 2011, 5 (11), pp.1735-1747. 10.1038/ismej.2011.51 . hal-01631857

**HAL Id: hal-01631857**

**<https://hal.science/hal-01631857>**

Submitted on 18 Jan 2022

**HAL** is a multi-disciplinary open access archive for the deposit and dissemination of scientific research documents, whether they are published or not. The documents may come from teaching and research institutions in France or abroad, or from public or private research centers.

L'archive ouverte pluridisciplinaire **HAL**, est destinée au dépôt et à la diffusion de documents scientifiques de niveau recherche, publiés ou non, émanant des établissements d'enseignement et de recherche français ou étrangers, des laboratoires publics ou privés.

# Metabolic diversity among main microorganisms inside an arsenic-rich ecosystem revealed by meta- and proteo-genomics

Philippe N Bertin<sup>1</sup>, Audrey Heinrich-Salmeron<sup>1</sup>, Eric Pelletier<sup>2,3,4</sup>, Florence Goulhen-Chollet<sup>1</sup>, Florence Arsène-Ploetze<sup>1</sup>, Sébastien Gallien<sup>5</sup>, Béatrice Lauga<sup>6</sup>, Corinne Casiot<sup>7</sup>, Alexandra Calteau<sup>3,4,8</sup>, David Vallenet<sup>3,4,8</sup>, Violaine Bonnefoy<sup>9</sup>, Odile Bruneel<sup>7</sup>, Béatrice Chane-Woon-Ming<sup>3,4,8</sup>, Jessica Cleiss-Arnold<sup>1</sup>, Robert Duran<sup>8</sup>, Françoise Elbaz-Poulichet<sup>7</sup>, Nuria Fonknechten<sup>2,3,4</sup>, Ludovic Giloteaux<sup>6</sup>, David Halter<sup>1</sup>, Sandrine Koechler<sup>1</sup>, Marie Marchai<sup>1</sup>, Damien Mornico<sup>3,4,8</sup>, Christine Schaeffer<sup>5</sup>, Adam Alexander Thil Smith<sup>3,4,8</sup>, Alain Van Dorsselaer<sup>5</sup>, Weissenbach<sup>2,3,4</sup>, Claudine Médigue<sup>4,8</sup> and Denis Le Paslier<sup>2,3,4</sup>

<sup>1</sup>Génétique Moléculaire, Génomique et Microbiologie, UMR7156 CNRS and UdS, Strasbourg, France;

<sup>2</sup>CEA, DSV, IG, Genoscope, Laboratoire de Métagénomique des Procaryotes, France; <sup>3</sup>CNRS, UMR8030, Evry, France; <sup>4</sup>UEVE, Université d'Evry, France; <sup>5</sup>Laboratoire de Spectrométrie de Masse Bio-Organique, Institut Pluridisciplinaire Hubert Curien, UMR7178 CNRS and UdS, Strasbourg, France; <sup>6</sup>Equipe Environnement et Microbiologie, UMR5254 CNRS and UPPA, Institut Pluridisciplinaire de Recherche sur l'Environnement et les Matériaux, Pau, France; <sup>7</sup>Laboratoire HydroSciences Montpellier, UMR 5569, Montpellier, France; BCEA, DSV, IG, Genoscope, Laboratoire d'Analyses Bioinformatiques pour la Génomique et le Métabolisme, France and <sup>9</sup>Laboratoire de Chimie Bactérienne, UPR9043 CNRS et Université de la Méditerranée, Marseille, France

**By their metabolic activities, microorganisms have a crucial role in the biogeochemical cycles of elements. The complete understanding of these processes requires, however, the deciphering of both the structure and the function, including synecologic interactions, of microbial communities. Using a metagenomic approach, we demonstrated here that an acid mine drainage highly contaminated with arsenic is dominated by seven bacterial strains whose genomes were reconstructed. Five of them represent yet uncultivated bacteria and include two strains belonging to a novel bacterial phylum present in some similar ecosystems, and which was named *Candidatus Fodinabacter communicans*. Metaproteomic data unravelled several microbial capabilities expressed *in situ*, such as iron, sulfur and arsenic oxidation that are key mechanisms in biomineralization, or organic nutrient, amino acid and vitamin metabolism involved in syntrophic associations. A statistical analysis of genomic and proteomic data and reverse transcriptase-PCR experiments allowed us to build an integrated model of the metabolic interactions that may be of prime importance in the natural attenuation of such anthropized ecosystems.**

*The ISME Journal* advance online publication, 12 May 2011; doi:10.1038/ismej.2011.51

**Subject Category:** integrated genomics and post-genomics approaches in microbial ecology

**Keywords:** microbial genomics; extreme environment; uncultured microorganism; bacterial phylum; synecology; functional ecology

## Introduction

Microorganisms are involved in biogeochemical nutrient cycles and have, therefore, a crucial role in the biosphere (Haferburg and Kothe, 2007; Falkowski *et al.*, 2008; Konopka, 2009). Although

microbial ecosystems constitute a major reservoir of our planet's genetic biodiversity, it is generally recognized that most of the microorganisms present in the environment are not accessible by the current culture-dependent techniques. The recent developments in genomics have given an unprecedented opportunity to gain insight into the structure and the functioning of microbial communities (Allen and Banfield, 2005; Bertin *et al.*, 2008; Wilmes *et al.*, 2009). Indeed, environmental genomics has extended their analysis far beyond the sole taxonomic studies, allowing the characterization of the whole community gene pool and its expression. Such

Correspondence: PN Bertin. Génétique Moléculaire. Génomique et Microbiologie. Institut de Botanique, Université de Strasbourg  
28 rue Goethe. Strasbourg 67000, France.  
E-mail: philippe.bertin@unistra.fr

approaches give rise to an integrated picture of ecosystems and are, therefore, of great interest to interpret the metabolisms present in ecological niches considered as extreme, including those impacted by human activities. Among the most toxic anthropogenic contaminants, arsenic is at the origin of serious forms of water pollution in industrial and post-industrial areas all over the world. In particular, high arsenic contents are encountered in mine drainage waters, where the metalloid is usually associated with sulfur, iron and other metals (Vaughan, 2006). Few forms of life are known to thrive in these often acid waters, as compared with neutral waters (Johnson and Hallberg, 2003; Deneff *et al.*, 2010). In this respect, the As(III) form (arsenite) can provide chemolithotrophic organisms with energy (Silver and Phung, 2005; Stolz *et al.*, 2006).

The former mine of Carnoulès, Gard (France) provides an outstanding example of such an extreme environment. The sulfurous wastes contain As-rich pyrite and the leached waters are the source of a small stream called the Reigous that contains between 50 and 350 mg T<sup>-1</sup> of soluble arsenic, mainly in the form of As(III) (Casiot *et al.*, 2003; Egal *et al.*, 2010). However, although the arsenic levels remain still high, this concentration decreases by 95% between the source of the Reigous and its confluence with the river Amous, 1.5 km downstream. This natural process of attenuation seems to be mainly due to microbial metabolism, leading to the oxidation of iron and arsenic into Fe(III) and As(V), and their co-precipitation with sulfur. In addition, laboratory experiments suggest that bacteria belonging to *Thiomonas* or *Acidithiobacillus* genera are involved in this process *in situ* (Bruneel *et al.*, 2003; Casiot *et al.*, 2003; Duquesne *et al.*, 2003; Morin *et al.*, 2003; Egal *et al.*, 2009). However, 16S-based community analyses have revealed that other genera are present in this ecosystem (Duquesne *et al.*, 2003, 2008; Bruneel *et al.*, 2003, 2006, 2008, 2011). The biological activity of these uncultured bacteria may have a significant impact on the functioning of this ecosystem. In the present study, we used a multi-disciplinary approach that took advantage of the 'omics' methods, to decipher the role of microorganisms, including uncultured bacteria, in the complex metabolic processes at work in the Carnoulès acid mine drainage (AMD), an arsenic-rich ecosystem.

## Materials and methods

### *Sampling and chemical analysis*

Samples were collected in May 2007 at the station called COWG (Carnoulès Oxydizing Wetland, G) located 30 m downstream of the spring (Bruneel *et al.*, 2003). In all, 5 cm deep white sediments were collected at the bottom of the creek using a sterile tube and pooled (Global positioning system (GPS) coordinates: 44°07'01.80"N/4°00'06.90"E), while the running water (that is a thin column, <10 cm)

covering these sediments was collected in triplicate and filtered (300 ml) through sterile 0.22 µm nucleopore filters. These filters were transferred into a collection tube, frozen in liquid nitrogen and stored at -80 °C until further analysis. The main physico-chemical parameters (pH, T°, dissolved oxygen) were determined in the field and arsenic speciation, Fe(II) and sulfate analyses were performed as previously described (Bruneel *et al.*, 2008).

### *DNA isolation and sequencing*

DNA was extracted from the cellular fraction either directly using the UltraClean Soil DNA Isolation kit (MoBio Laboratories Inc., Carlsbad, CA, USA), or after separation of microbial cells by Nycodenz gradient, using the Wizard Genomic DNA Extraction kit (Promega, Madison, WI, USA) and stored at -20 °C (Supplementary Information). Nebulized DNA fragments ranging from 3 to 5 kb were used to construct a genomic library and DNA inserts were sequenced, as previously described (Muller *et al.*, 2007), giving rise to 550 920 Sanger reads. In parallel, 281 758 DNA reads were obtained by GS-FLEX pyrosequencing using standard procedures. Both methods produced a total of 430.3 Mbp.

### *Clone library and phylogenetic analyses*

Bacterial diversity was analyzed by cloning and sequencing PCR-amplified 16S rRNA genes (Supplementary Information). Sequences were compared with the RDP database (<http://rdp.cme.msu.edu>) (Wang *et al.*, 2007) and BLAST (Basic Local Alignment Search Tool) online searches (Altschul *et al.*, 1997). Phylogenies were constructed with the molecular evolutionary genetics analysis v4.0 program (Tamura *et al.*, 2007) using maximum composite-likelihood model and neighbor-joining algorithm. The sequences of clones CG determined in this study were submitted to the EMBL database and were given accession numbers FN391809 to FN391849.

### *Bioinformatics, statistical analysis and phylogenomic approach*

Two-third of the metagenomic sequences were successfully organized in seven bins (Supplementary Information) and were then integrated into the MicroScope platform for the prediction of coding sequences, followed by automatic and expert annotation (Vallenet *et al.*, 2009). The mean polymorphism frequency in the population was assessed using SNIPer (Ning *et al.*, 2001). Molecular phylogenies were inferred using 27 universal marker genes chosen from a reference gene set (Ciccarelli *et al.*, 2006) (Supplementary Information). For each marker, the corresponding family of homologous genes from the HOGENOM database (Perrière *et al.*, 2000) was identified. Each family data set was

then aligned with the program MUSCLE (Edgar, 2004) and filtered using the program GBLOCKS (Castresana, 2000; Talavera and Castresana, 2007). Maximum-likelihood phylogenies were reconstructed with PhyML (v2.4.4; Guindon and Gascuel, 2003) using the Jones–Taylor–Thornton model of amino acid substitution (Jones *et al.*, 1992). The metabolic network was predicted by the ‘Pathway Tools’ software (Karp *et al.*, 2002) using MetaCyc (Caspi *et al.*, 2008) as a reference pathway database and then analyzed by a multiple factor analysis from a two-dimensional matrix (Supplementary Information). DNA sequences were submitted to GenBank and were given the following ProjectIDs: 38045—Carnoules metagenome study (top level); 41535—Carnoules metagenome study, bin 1; 41537—Carnoules metagenome study, bin 2; 41539—Carnoules metagenome study, bin 3; 41541—Carnoules metagenome study, bin 4; 41543—Carnoules metagenome study, bin 5; 41545—Carnoules metagenome study, bin 6; 41549—Carnoules metagenome study, bin 7.

#### Protein extraction, gel electrophoresis and mass spectrometry identification

Proteins were extracted from cells recovered using Nycodenz gradient (Supplementary Information), separated by sodium dodecyl sulfate-polyacrylamide gel electrophoresis (SDS-PAGE) using 12% gradient slab gels (PROTEAN II, Bio-Rad Laboratories, Hercules, CA, USA), stained with Coomassie Brilliant Blue R-250 and *in gel* digested, as previously described (Weiss *et al.*, 2009). The resulting peptide extracts were analyzed by liquid chromatography and mass spectrometry (nanoLC-MS/MS) on a nanoACQUITY Ultra-Performance-LC (UPLC, Waters, Milford, MA, USA) coupled to SYNAPT hybrid quadrupole orthogonal acceleration time-of-flight tandem mass spectrometer (Waters). Data were analyzed using the MASCOT 2.2.0. algorithm (Matrix Science, London, UK) to search against a target-decoy protein database (Supplementary Information).

#### PCR and reverse transcription

Total RNA was extracted as described (González-Mendoza *et al.*, 2009) after Nycodenz gradient density separation of the bacterial community for 15 min at 4 IC from sediments stored at  $-80$  IC. Total RNA was purified using the RNEasy Mini kit (Qiagen, Valencia, CA, USA) and digested with

DNase (Fermentas, Glen Burnie, MD, USA). The reverse transcription of *punA*, *soxC* and *cobS* transcripts was performed using SuperScript III One-Step reverse transcriptase-PCR System (Invitrogen, Carlsbad, CA, USA) and 5'-CTCCATCCGAAAAAGTGCTC-3'/5'-AAAGAGGTTTTGCTGCGGTA-3', 5'-ATCGACGGATTTCTGGATTG-3'/5'-GGTAACGCTGCATCTAAGC-3' and 5'-TTGCTGATTTGTTGCTCTG-3'/5'-TCCAGCAGACTGGACAACAC-3' primers, respectively. A negative control was carried out without the first reverse transcription step. Amplified fragments were sequenced by Milligen and the resulting sequences were analyzed using BLAST program (Altschul *et al.*, 1997).

#### Bacterial culture and growth medium

Iron oxidation was tested with *Acidithiobacillus ferrooxidans* B5 strain isolated from Carnoules (Casiot *et al.*, 2003). A total of,  $5 \times 10^6$  cells ml<sup>-1</sup> were grown at 30 IC for 5 days in 100:10 liquid medium (Schrader and Holmes, 1988) supplemented or not with 1 mg l<sup>-1</sup> cobalamin (Sigma, St Louis, MO, USA) and shaken at 140 r.p.m. Iron oxidation was followed by the appearance of an orange precipitate and cellular growth was estimated by colony-forming unit (CFU) counting.

## Results

#### Phylogeny and genome reconstruction

The main physico-chemical parameters (pH, Tl, dissolved oxygen, iron concentration) were determined at the sampling site: a pH value of roughly 3.5 was measured, and arsenic, iron and sulfate concentrations reached 87, 625 and 3209 mg l<sup>-1</sup>, respectively, which correspond to 1.16 mM As, 11.16 mM Fe and 33.43 mM SO<sub>4</sub> (Table 1). This further supports a persistent contamination by arsenic and other inorganic elements (Casiot *et al.*, 2003; Egal *et al.*, 2010). To identify the microbial species present in this ecosystem, DNA was extracted from the upper zone of sediments, 16S rRNA gene sequences were amplified, cloned and sequenced as described (Bruneel *et al.*, 2008). Sequence analyses revealed a dominance of bacteria belonging to the Proteobacteria phylum (b- and g-Proteobacteria with 38% and 23%, respectively) (Figure 1). Remaining clones belonged to Firmicutes (4%) and Acidobacteria (3%), and to a lesser extent to classes such as Spirochaetes (1%) and a-Proteobacteria (1%). This demonstrates that the microbial community at Carnoules includes a few other bacterial

Table 1 Physico-chemical characteristics of the Carnoules water during the sampling at COWG<sup>a</sup>

PH	T (IC)	DO <sup>b</sup> (mg l <sup>-1</sup> )	Eh <sup>c</sup> (mV)	As(III) (mg l <sup>-1</sup> )	As(V) (mg l <sup>-1</sup> )	Fe(II) (mg l <sup>-1</sup> )	Fe(III) (mg l <sup>-1</sup> )	SO <sub>4</sub> <sup>2-</sup> (mg l <sup>-1</sup> )
3.83	15.1	8.3	459	71 (±4)	16 (±1)	625(±30)	●DL <sup>d</sup>	3209 (±300)

<sup>a</sup>Carnoules Oxydizing Wetland, G. <sup>b</sup>Dissolved oxygen. <sup>c</sup>Redox potential. <sup>d</sup>Detection limit.

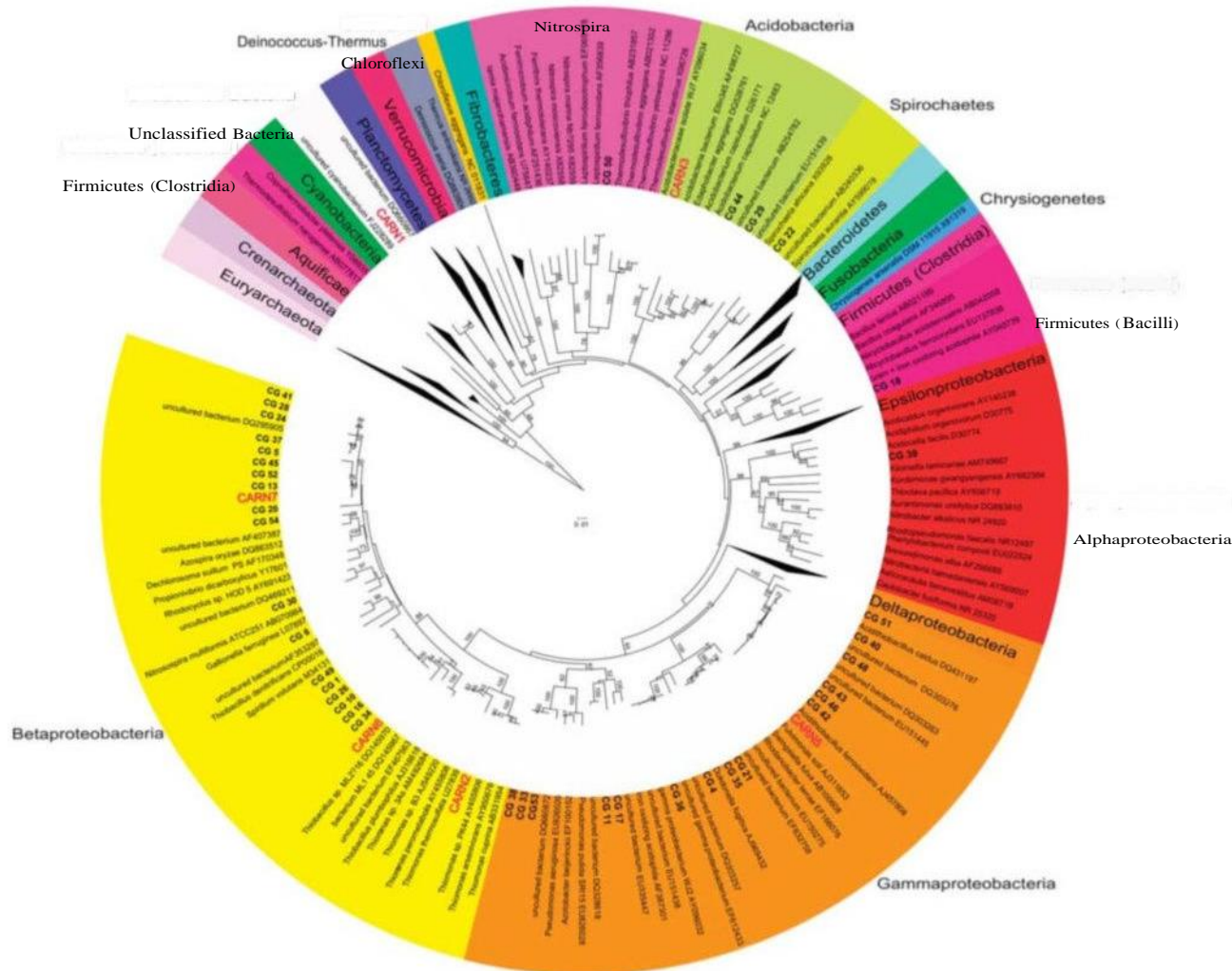


Figure 1 Phylogenetic tree representing the taxonomic affiliation of the Camoulès community microorganisms. The 16S rRNA gene sequences were obtained from DNA sediments after PCR amplification (clones CG-X) or metagenomic sequencing (CARN bins, except for CARN4, see text). A total of 759 positions in the final data set were obtained after all positions containing gaps and missing data were eliminated. The distances were computed using the maximum composite-likelihood method and the tree was inferred using the neighbor joining method. The scale bar corresponds to 0.05 substitutions per site. Percentages of 1000 bootstrap resamplings that supported the branching orders in each analysis are shown above or near the relevant nodes. Bootstrap values are shown for branches with >50% bootstrap support.

phyla in addition to those previously identified (Bruneel *et al.*, 2006, 2011).

To decipher the possible role of microorganisms in the biotransformation of toxic elements present at the study site, total DNA extracted from sediments was next fully sequenced. These genomic data were assembled in seven major bins called CARN1 – CARN7, using a combination of 16S rRNA gene sequences, guanine and cytosine content (GC%), mean coverage of the various contigs, mean polymorphism frequency and similarity to already sequenced genomes, including *At. ferrooxidans* and *Thiomonas* sp. 3As (<http://www.genoscope.cns.fr/agc/microscope/carnoulescope>). Even though we demonstrated the existence of other species (see above), the presence of numerous dominant organisms would probably not have allowed to construct

such large bins. Their size ranged from 1.5 to > 4.0 Mbp and their guanine and cytosine content ranged from 52% to 65% (Table 2). DNA sequencing led to a low coverage for some contigs, in particular those of CARN3, which suggests that the size of the corresponding genome is underestimated. Finally, although the sequence assembling from ecotypes cannot be excluded, each supercontig group was considered to correspond to the genome of one single major organism (Supplementary Figure S1).

We evaluated the origin of the seven strains by a phylogenetic analysis of 16S rRNA sequences obtained from both the clone library and metagenome sequencing (Figure 1), except for CARN4, whose missing rRNA sequence precluded its 16S-based classification. Nevertheless, at the extremity of a contig, this bin contained a 23S rRNA gene

Table 2 General features of the seven Carnoulès bins

	<i>Carnoule's 1</i>	<i>Carnoule's 2</i>	<i>Carnoule's 3</i>	<i>Carnoule's 4</i>	<i>Carnoule's 5</i>	<i>Carnoule's 6</i>	<i>Carnoule's 7</i>
Number of base pairs	255 8671	406 9759	156 7831	276 0983	298 4465	282 4537	270 8310
Guanine and cytosine content (GC%)	62.13	64.66	58.55	61.89	58.4	58.51	51.7
No. of predicted protein-encoding genes	2664	4302	1498	2806	3292	2851	2949
No. of predicted proteins of unknown function (%)	1267 (47.56 %)	1561 (36.29 %)	781 (52.14 %)	1359 (48.43 %)	1500 (45.57 %)	1531 (53.70 %)	1322 (44.83 %)
<i>Cellular processes and signaling</i>	<i>Number (%)</i>	<i>Number (%)</i>	<i>Number (%)</i>	<i>Number (%)</i>	<i>Number (%)</i>	<i>Number (%)</i>	<i>Number (%)</i>
Cell cycle control, cell division, chromosome partitioning	33 (1.24)	50 (1.16)	9 (0.06)	49 (1.75)	46 (1.4)	38 (1.33)	51 (1.73)
Cell wall/membrane/envelope biogenesis	139 (5.22)	202 (4.7)	70 (4.67)	177 (6.31)	193 (5.86)	153 (5.37)	137 (4.65)
Cell motility	60 (2.25)	112 (2.6)	29 (1.94)	61 (2.17)	53 (1.61)	63 (2.21)	97 (3.29)
Post-translational modification, protein turnover, chaperones	101 (3.79)	177 (4.1)	46 (3.07)	119 (4.24)	136 (4.13)	88 (3.09)	118 (4)
Signal transduction mechanisms	121 (4.54)	230 (5.35)	55 (3.67)	121 (4.31)	100 (3.04)	105 (3.68)	156 (5.29)
Intracellular trafficking, secretion and vesicular transport	62 (2.33)	120 (2.79)	52 (3.47)	79 (2.82)	131 (3.98)	89 (3.12)	104 (3.56)
Defense mechanisms	56 (2.1)	107 (2.49)	36 (2.4)	66 (2.35)	74 (2.25)	59 (2.07)	62 (2.1)
Extracellular structures	1 (0.04)	1 (0.02)	1 (0.07)	3 (0.11)	2 (0.06)	1 (0.04)	1 (0.03)
RNA processing and modification		1 (0.02)			1 (0.03)		1 (0.03)
<i>Information storage and processing</i>							
Chromatin structure and dynamics	1 (0.04)	1 (0.02)		1 (0.04)	1 (0.03)		1 (0.03)
Translation, ribosomal structure and biogenesis	161 (6.04)	177 (4.1)	73 (4.87)	166 (5.92)	161 (4.89)	75 (2.63)	103 (3.49)
Transcription	120 (4.5)	230 (5.35)	66 (4.41)	148 (5.27)	141 (4.28)	109 (3.82)	143 (4.85)
Replication, recombination and repair	202 (7.58)	372 (8.65)	99 (6.61)	182 (6.49)	272 (8.26)	264 (9.26)	307 (10.41)
<i>Metabolism</i>							
Energy production and conversion	161 (6.04)	335 (7.79)	64 (4.27)	177 (6.31)	199 (6.05)	149 (5.23)	172 (5.83)
Amino acid transport and metabolism	313 (11.75)	488 (11.34)	120 (8.01)	309 (11.01)	277 (8.41)	214 (7.51)	207 (7.02)
Nucleotide transport and metabolism	69 (2.59)	94 (2.19)	25 (1.67)	61 (2.17)	73 (2.22)	63 (2.21)	63 (2.14)
Carbohydrate transport and metabolism	139 (5.22)	232 (5.39)	101 (6.74)	173 (6.17)	171 (5.19)	107 (3.75)	125 (4.24)
Coenzyme transport and metabolism	108 (4.05)	152 (3.53)	42 (2.8)	110 (3.92)	113 (3.43)	72 (2.53)	102 (3.46)
Lipid transport and metabolism	112 (4.20)	164 (3.81)	36 (2.4)	112 (3.99)	75 (2.28)	63 (2.21)	65 (2.2)
Inorganic ion transport and metabolism	117 (6.64)	322 (7.48)	78 (5.21)	183 (6.52)	231 (7.02)	136 (4.77)	158 (5.36)
Secondary metabolite biosynthesis, transport and catabolism	64 (2.40)	132 (3.07)	29 (1.94)	76 (2.71)	68 (2.07)	36 (1.26)	44 (1.49)

sequence, which was similar to that of CARN1. We also performed a phylogenomic analysis of the bins using 27 universal marker genes (individually or combined) sufficiently conserved to build a tree of life (Ciccarelli *et al.*, 2006), except for CARN6 where those markers were not found. Precisely, the candidates CARN2, CARN3 and CARN5 were affiliated to the (3-Proteobacterium *Thiomonas* genus, the Acidobacteria clade and to the *At. ferrooxidans* γ-Proteobacterium, respectively (Supplementary Table S1). These phylogenetic results were supported by an analysis of gene order conservation known to be correlated with evolutive distances (Huynen and Bork, 1998). Finally, classification using 16S rRNA gene and RDP classifier indicated with confidence that CARN6 and CARN7 belong to the P-Proteobacteria class. In addition, 16S rRNA gene BLAST searches against NCBI nr database showed that the closest cultivated microorganisms to these two bins belong to the *Thiobacillus* and *Gallionella* genera, respectively (Supplementary Table S1).

Remarkably, the candidates corresponding to the CARN1 and CARN4 bins showed an important phylogenetic relationship and may represent two subpopulations according to the polymorphism distribution along their genome (Supplementary Figure S2). RDP classifier indicated that those bins did not correspond to any known taxonomic phylum and, according to the metabolic properties identified in the present study (see below), this new genus was herein named '*Candidatus Fodinabacter communicans*' (from fodina, mine and communicare, share), in accordance with the recommendations for incompletely characterized microorganisms (Murray and Stackebrandt, 1995).

#### *Metabolic potentialities of and in situ expressed activities by the seven dominant bacteria*

To determine the major metabolic potentialities of each bin, an in depth *in silico* analysis of their gene content was performed. In parallel, we investigated the functioning of the bacterial community by analyzing the proteins synthesized *in situ* by all bins. This metaproteomic approach allowed the reliable identification of > 500 unique proteins belonging to various functional classes, for example membrane and transport, stress response and energy metabolism (Supplementary Tables S2ab). The experimental protein pattern was representative of the theoretical profile inferred from metagenomic data and the number of proteins identified from each bin was in agreement with the level of sequence coverage, which may reflect species abundance. Indeed, while a few proteins originated from CARN3 and CARN6, CARN1 and CARN4 bins were shown to express 70% of the identified proteins and emerged as abundant and very active in the ecosystem (Figure 2). Due to a low homology ranging from 20% to 30% with proteins present in databases, about 25% of the proteins synthesized by these last two bins were annotated as hypothetical

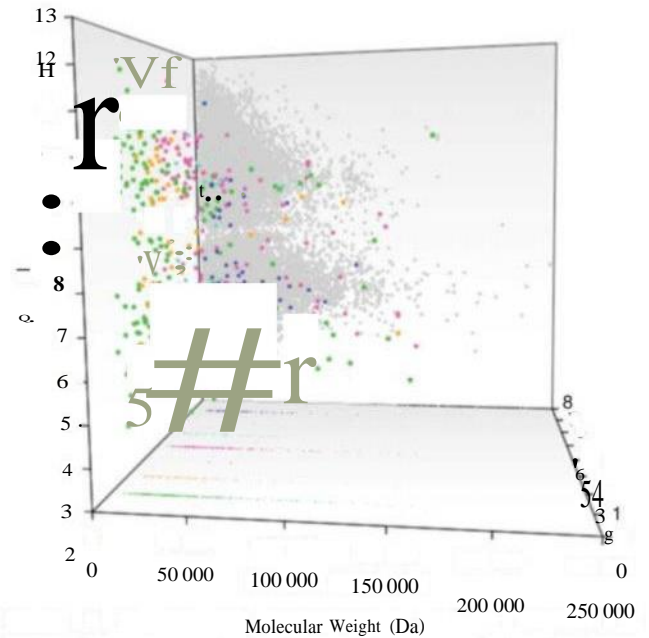


Figure 2 Experimental metaproteomic pattern obtained by MS/MS identification of the proteins expressed *in situ* (CARN1, green; CARN2, orange; CARN3, black; CARN4, pink; CARN5, light blue; CARN6, brown and CARN7, blue). As a background, the theoretical distribution predicted from metagenomic data is represented in gray.

(Supplementary Table S2b). One-third might, however, represent exported hydrolases, membrane transport proteins or sensors and modulators of chemotaxis and motility (data not shown).

The genome of each bin was shown to contain at least one *ars* operon encoding arsenite efflux pumps and arsenate reductases. These genes are involved in arsenic resistance, and the presence of the corresponding proteins was demonstrated in protein extracts (Supplementary Table S2b). An *arsM* gene coding for an arsenite S-adenosylmethyltransferase was also identified in the genome of CARN6, in agreement with the presence of methylated forms of arsenic in Carnoulès sediments, that is monomethylarsonate and dimethylarsinate ( $7 \cdot 10^{-4}$  and  $3 \cdot 10^{-4}$  mg, respectively, per mg dry weight). A few *arsM* homologous genes were also identified in unassembled sequences, which further supports the existence of arsenic methylation at the study site (data not shown). Finally, because of the structural similarity between As(V) and phosphate, arsenic metabolizing strains may preferentially transport phosphate via the specific Pst phosphate transport system rather than the Pit general transport mechanism, in order to reduce the entry of As(V). Accordingly, no Pit protein was identified in metaproteomic data, while several Pst proteins were detected (Supplementary Table S2b).

The microbial response to arsenic is known to result in various biological effects, including oxidative stress, DNA damage, exopolysaccharide synthesis and biofilm formation (Beyersmann and Hartwig, 2008; Marchai *et al.*, 2010). Metaproteomic data showed that Carnoulès strains indeed express

functions protecting against general and oxidative stress, including superoxide dismutase or thioredoxin, and chaperones such as DnaK or GroEL, which have previously been detected in AMD (Ram *et al.*, 2005; Bruneel *et al.*, 2011). Several proteins such as RecA and DPS involved in DNA recombination and repair were also identified. In addition, several flagellar proteins synthesized by CARN1 and CARN4 were identified in protein extracts (Supplementary Table S2b), as well as a protein involved in the synthesis of type 4 pilus expressed by *Thiomonas* sp. and known to have a role in twitching motility and adhesion (Li *et al.*, 2010). The corresponding operon, found in the genome of this bin, was also present in the genomes of CARN5 and CARN7. These adaptive processes typically depend on multiple regulatory mechanisms that allow bacteria to respond to a wide panel of stimuli. This was supported by the proteomic identification of proteins such as the nucleoid-associated proteins HU and H-NS, which have a major role in both the structure and the function of chromosomal DNA (Tendeng and Bertin, 2003; Grove, 2010). Several regulators, including alternative  $\sigma$  factors such as  $\sigma^H$  and regulatory proteins belonging to the two-component systems or those involved in cell-to-cell signaling, were also expressed by various strains (Supplementary Tables S2ab), in agreement with the presence in their genome of multiple genes coding for proteins involved in stress response.

In a partly oligotrophic environment, such as the Carnoules AMD, various metabolic reactions may be needed for autotrophic metabolism. In this respect, CARN5 and CARN7 may fix nitrogen by the expression of *nif* genes, which encode a nitrogenase (Dixon and Kahn, 2004), although this oxygen-sensitive enzyme was not detected in protein extracts. In addition, carbon fixation depends on proteins such as ribulose 1,5-biphosphate carboxylase/oxygenase (involved in Calvin cycle) (Badger and Bek, 2008), carboxysome structural proteins and carbon monoxide dehydrogenase (involved in acetyl-coenzyme A synthesis). These enzymes were identified in protein extracts, in agreement with the presence of the corresponding genes in *Thiomonas* sp. (CARN2), *Acidithiobacillus* sp. (CARN5) or *Gallionella*-related (CARN7) bins. These observations suggest that these three strains have a key role as organic compound primary producers. Nevertheless, other microorganisms may preferentially metabolize and recycle some organic compounds released by others. For example, the CARN6 bin carries the cellulase-encoding gene *bczS* and the  $\alpha$ -amylase *amyM* gene, suggesting that this strain is able to metabolize complex carbohydrates. Similarly, several enzymes required for amino acid transport and metabolism were identified in the bins lacking the carbon and nitrogen fixation genetic determinants, in agreement with a mixotrophic or organotrophic metabolism. In particular, the CARN1 and CARN4 bins of '*Candidatus* Fodinabacter

communificans' contain genes such as *liv* and *opp* involved in branched amino acid and oligopeptide transport, respectively. In addition, both strains were shown to encode multiple peptidases, such as the metallopeptidase M61 and the serine protease S41 (Supplementary Table S2b), and to express the *punA* gene (Supplementary Figure S3), which suggests that they can use purine as a carbon source (Schuch *et al.*, 1999). The CARN1 and CARN4 bins also expressed Gcv proteins of the glycine cleavage system that catalyzes the degradation of glycine and PdxS proteins involved in active vitamin B6 biosynthesis, which has an important role in amino acid metabolism (Fitzpatrick *et al.*, 2007).

A wide diversity of bioenergetic electron chains may be needed to accommodate the presence in this ecosystem of various electron acceptors such as O<sub>2</sub> or Fe(III) oxides and electron donors such as Fe(II) or sulfides. Accordingly, several terminal oxidases might be operative in all strains of the Carnoules community, for example the cytochrome oxidase *cox* and *cta* operons and the *cyo* and *cyd* operons encoding quinol oxidases. Some operons involved in anaerobic respiration were also identified, in particular *ntr*, *nar* and *nas* in CARN2 and CARN7 bins, which suggests the possible recourse to anaerobic nitrate and nitrite metabolism. Nevertheless, the identification of several nicotinamide adenine dinucleotide-ubiquinone and cytochrome *c* oxidases in protein extracts supports the existence of an active aerobic metabolism at the sampling site (Supplementary Table S2b). The oxidation of H<sub>2</sub> to protons may be a source of energy due to the presence in CARN2, CARN5 and CARN6 of several hydrogenase-encoding genes, in particular *hox* and *hup* operons (Friedrich and Schwartz, 1993). In addition, possible inorganic electron donors may comprise sulfur compounds. This is suggested by the presence and the expression (Supplementary Figure S3) in *Thiomonas* sp. (CARN2), *Acidithiobacillus* sp. (CARN5) or *Gallionella*-related sp. (CARN7) of genes such as *hdr*, *sor*, *sox*, *tetH* or *sqr* involved in the oxidation of reduced inorganic sulfur compounds, for example sulfide, sulfur, sulfite, thiosulfate or tetrathionate. Finally, the CARN7 bin harbors a *dsrABEFHCMKLJOPN* operon. The DsrA sequence showed only 39% identity with that of the sulfato-reducing *Desulfovibrio vulgaris*, but 72% with the amino acid sequence of the sulfoxidizing *Thiobacillus denitrificans*. This suggests that the *Gallionella*-related bin (CARN7) is able, like *T. denitrificans*, to use sulfur compounds as electron donors in its energy metabolism, as suggested in *Gallionella ferruginea* (Lutters-Czekalla, 1990).

Additionally, arsenite may constitute a possible inorganic electron donor and three arsenite oxidases with a nucleotide and amino acid sequence similarity 495% and 98%, respectively, and possibly involved in the bioenergetic transformation of As(III) to As(V) were shown to be expressed by *Thiomonas* sp. (CARN2). Although we cannot rule



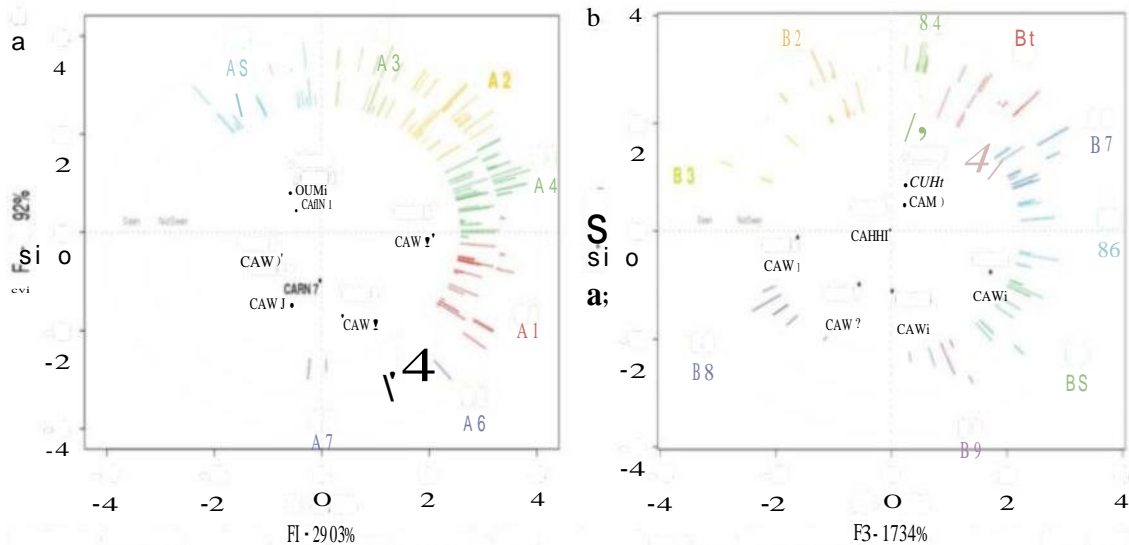


Figure 3 Multiple factorial analysis of the seven Carnoulès bins performed on a two-dimensional matrix combining bins and enzymatic reactions, respectively. To highlight possible metabolic distinctions between bins, three axes (FI to F3) capturing the highest dispersion in the resulting dot cloud were selected; they represent more than half the total dispersion. Colored lines represent the projection of vectors corresponding to the enzymatic reaction frequencies, the external disk differentiating reactions whose enzymes were identified in the metaproteomic data. The reaction vectors were then hierarchically clustered, which led to 7 (A1 to A7) and 9 (B1 to B9) classes (indicated by the colors) for the first (a) and second (b) factorial planes, respectively. For each cluster, the corresponding reactions are listed in Supplementary Tables S3ab. For example, several reactions of Cluster A4 are concerned with energy and inorganic nutrient metabolism and in arsenic detoxification. As they are in the same quadrant of the plot as CARN2, these reactions are thus mostly specific to this bin. Similarly, Cluster A1 groups contain reactions common to CARN2 and CARN5 (Calvin–Benson–Bassham cycle and urea degradation pathways); Cluster A5 contains CARN6-specific reactions (cellulose metabolism) and Clusters A6, B1 and B4 include reactions in GARNI and CARN4 (lysine fermentation other amino acid or nucleoside degradation pathways and cobalamin biosynthesis).

out that those sequences may originate from various ecotypes, the presence of multiple copies of *aox* operons has been recently demonstrated in *Thiomonas* strains (Arsène-Ploetze *et al.*, 2010). Arsenate respiratory reductase-encoding gene, that is *arrA*, which allows anaerobic respiration of As(V), was neither identified in any of the seven bins nor in unassembled sequences, in agreement with the aerobic conditions prevailing in the ecosystem under study (Table 1). Importantly, the *Acidithiobacillus* sp. bin (CARN5) expressed the sole RusA protein (Supplementary Table S2b), which is involved in electron transport with iron used as an energy source. This further supports a major role of *Acidithiobacillus* sp. bin (CARN5) in the iron oxidation observed at Carnoulès (Bruneel *et al.*, 2003; Duquesne *et al.*, 2003; Morin *et al.*, 2003). Interestingly, two cytochromes *c* synthesized by CARN7 were also identified in protein extracts (Supplementary Table S2b). They showed 61% and 43% amino acid similarity, respectively, with Cyc1 and Cyc2 of *At. ferrooxidans*. Cyc1 belongs to the c4 family and Cyc2 is an outer membrane cytochrome *c* proposed to receive electrons directly from ferrous iron (Yarzabal *et al.*, 2002). Even though the other genes of the *rus* operon known to be involved in the electron transfer between Fe(II) and oxygen in *At. ferrooxidans* (Appia-Ayme *et al.*, 1999) have not been detected in CARN7, it is tempting to hypothesize that this organism may be involved in iron cycling in the AMD under study.

#### *Synecologic interactions within the microbial community*

Autotrophic, mixotrophic or heterotrophic metabolisms present at Carnoulès suggest the existence of metabolic and nutrient exchanges that may be of prime importance inside the microbial community, revealing the importance of syntrophic relationships. To support and extend these observations, a multiple factor analysis of both metagenomic and metaproteomic data was performed on a two-dimensional matrix combining bins and enzymatic reactions. The most discriminant axes, that is capturing the highest dispersion in the resulting dot cloud, suggest an important and specific role for each organism inside the Carnoulès community. Indeed, factorial planes segregated CARN2 from the other bins (Figure 3a) and separated CARN1/CARN4 from CARN5/CARN7. In addition, CARN3 was opposed to CARN6, revealing CARN6-specific reactions (Figure 3b). No such correlation was observed between our data and those from the AMD biofilm (Tyson *et al.*, 2004; Deneff *et al.*, 2010), which further supports the marked difference between these two ecosystems (Supplementary Figure S4). From the variable classification results, several clusters of reactions were then associated to each bin group (Figure 3). These include, for example, Cluster A4, which is linked to CARN2 (energy metabolism, inorganic nutrient metabolism and arsenic detoxification) (Supplementary Table S3a), and Cluster A1, which groups reactions

common to CARN2 and CARN5 (Calvin–Benson–Bassham cycle and urea degradation pathways). In addition, Cluster A5 contains CARN6-specific reactions, such as those involved in cellulose metabolism, while Clusters A6, B1 and B4 include reactions related to lysine fermentation and to other amino acid or nucleoside degradation pathways in CARN1 and CARN4, and also gather reactions related to cobalamin biosynthesis (Supplementary Table S3b). Indeed, the CARN1 and CARN4 bins carry the *cobSTU* operon involved in cobalamin (vitamin B12) synthesis (Escalante-Semerena, 2007), which was shown by reverse transcriptase-PCR to be expressed *in situ* (Supplementary Figure S3). Remarkably, iron oxidation catalyzed by *At. ferrooxidans* was strongly increased in the presence of cobalamin (Supplementary Figure S5). These data suggest that this vitamin synthesized by CARN1 and CARN4 may be used by CARN5, leading to an increase in iron oxidation.

## Discussion

In the last few years, a huge amount of genomic sequences have been published in databases,

including a complete characterization of several bacteria metabolizing arsenic (Muller *et al.*, 2007; Arsène-Ploetze *et al.*, 2010). In microbial ecology, the major challenge remains, however, to determine more precisely the role of microorganisms and their relationships with other members of the microbial community that result in an efficient functioning of the ecosystem. In this respect, metagenomic approaches based on high-throughput technologies may be of great interest in synecology, since they allow to investigate the role of complex microbe consortia as a whole, including that of uncultured microorganisms in the processes taking place *in situ*. In the present study, we performed an in-depth analysis of descriptive and functional genomic data that allowed us to identify the dominant diversity present in an arsenic-contaminated ecosystem (Figure 4). Some microorganisms belong to bacterial genera already characterized, for example *Thiomonas* (CARN2) and *Acidithiobacillus* (CARN5). Others correspond, however, to uncultured microorganisms such as the one related to *Gallionella* sp. (CARN 7) and the first representative of a novel bacterial phylum, here named ‘*Candidatus Fodinabacter communificans*’ (CARN1 and CARN4). Interestingly, only

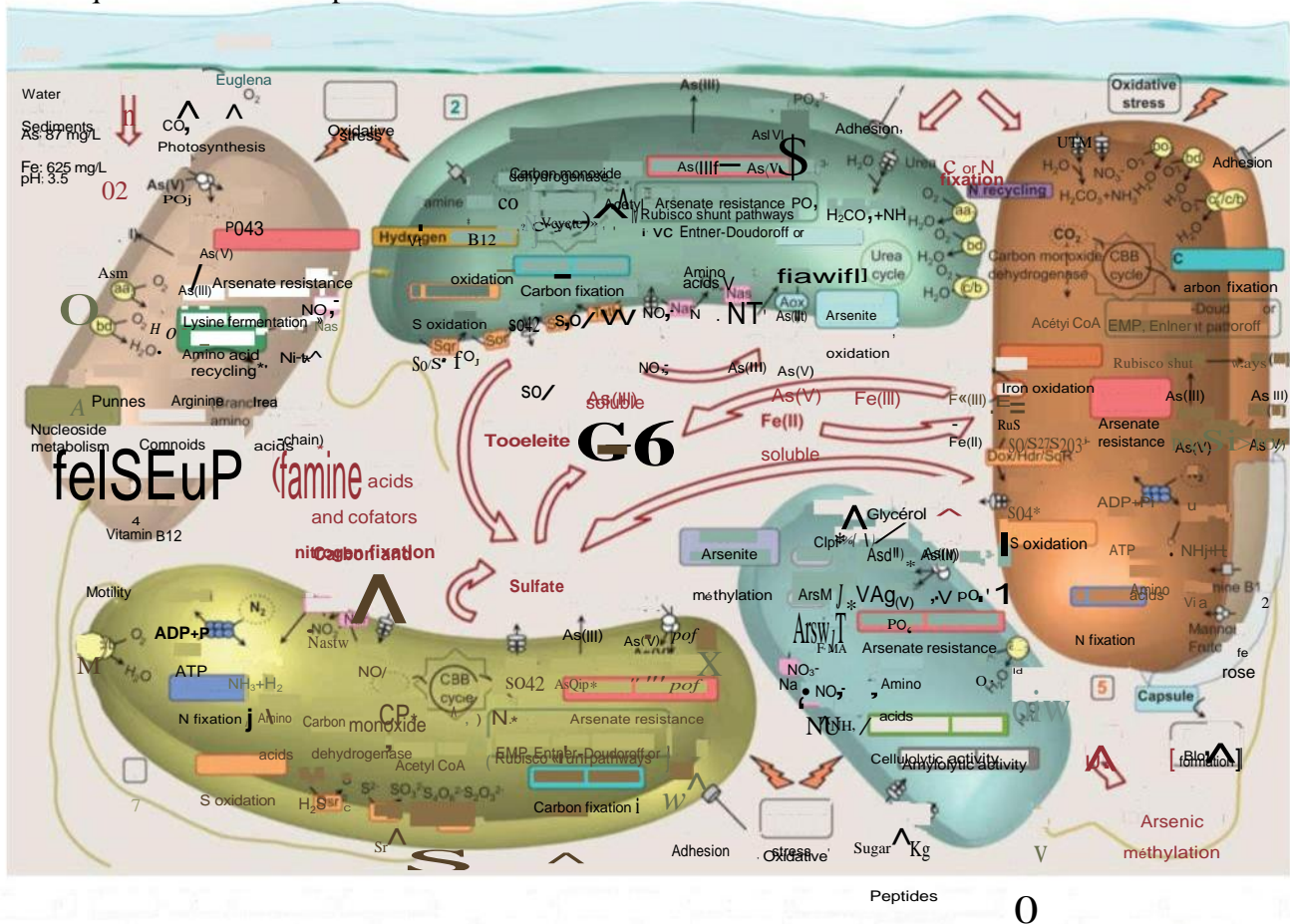


Figure 4 Model of the Carnoulès bacterial community highlighting the major functions identified by metagenome sequencing or metaproteome characterization. These activities include carbon and nitrogen fixation, energy metabolism, flagellum and capsule biosynthesis, amino acid transport and degradation, detoxification and stress response, arsenic and iron metabolism. The possible interactions between these microorganisms or with other chemical or biological compounds present on the study site are indicated by arrows. CARN bins are numbered from 1 to 7.

two 16S rRNA sequences (97% similarity) similar to CARN1 are present in databases and originate from other acid mine environments, suggesting that uncultivated bacteria of this genus are widespread in such ecosystems. Finally, the presence at the sampling site of two subpopulations of 'Candidatus Fodinabacter communificans' (Supplementary Figures S1 and 2) is reminiscent to what has been observed in other environmental contexts (Simmons *et al.*, 2008; Wilmes *et al.*, 2008). Such ecotypes, which may reflect an important genetic variability resulting from gene gain or loss, has been recently described in *Thiomonas* strains (Arsène-Ploetze *et al.*, 2010).

Metagenomic and metaproteomic data emphasized the diversity of mechanisms that may be important *in situ*, allowing the seven dominant bacteria to adapt their metabolic activities to changes in environmental conditions (Figure 4). One example concerns the ability of microorganisms to live in organized surface communities called biofilms, where aggregated cells are embedded in an exopolymeric matrix. Such a lifestyle confers on them a higher resistance to various environmental stresses (Harrison *et al.*, 2007) and favors the physical interactions between the cells (Davey and O'toole, 2000). In addition, flagellum biosynthesis and motility are often known to have a role in the first steps of biofilm formation (Soutourina and Bertin, 2003). Metagenomics revealed that most bins contain multiple flagellar and pili genes and metaproteomics allowed us to identify the corresponding proteins in CARN1/CARN4 and in CARN2, respectively (Supplementary Table S2b). While no flagellar operon was identified in *Acidithiobacillus* sp. (CARN5), as it may be observed in already sequenced related bacteria (<http://www.genoscope.cns.fr/agc/microscope/carnoulescope>), this bin contains several genes, such as *galE* and *pgm* involved in capsular biosynthesis in *At ferrooxidans* (Barreto *et al.*, 2005), suggesting a role of this strain in the formation of a biofilm.

More importantly, combined with multiple factorial analysis of the data, our observations demonstrated both the metabolic specificity and partnerships that may exist inside an arsenic-rich environment at the benefit of the microbial community as a whole. These processes include the fixation of inorganic carbon and nitrogen by several strains, in particular those belonging to the *Thiomonas* (CARN2), *Acidithiobacillus* (CARN5) and *Gallionella*-related (CARN7) genera. Indeed, these strains were shown to synthesize proteins such as the Rubisco, that is ribulose-1,5-biphosphate carboxylase oxygenase. This enzyme of the Calvin cycle catalyzes the first step of CO<sub>2</sub> fixation. In addition, the genome of CARN5 and CARN7 also contains the *nif* genes, which may encode a nitrogenase. This further supports a key role of these organisms in nitrogen cycle inside the Carnoulès community. Their autotrophic metabolisms may be essential to reach an equilibrium between auto- and heterotrophy

providing other partners with organic nutrients. In this respect, the presence of *fucP* and *exuT* genes coding for L-fucose and hexuronate transporters, respectively, in CARN3 may support, at least in part, the carbon requirements of this organism. In addition, CARN6 carries the cellulase-encoding gene *bczS* and the  $\alpha$ -amylase *amyM* gene, suggesting its ability to metabolize more complex carbohydrates.

Remarkably, our results highlighted the role of several members of the Carnoulès community in the recycling of both mineral and organic resources, such as arsenic, iron, sulfur, urea, vitamins, nucleosides and amino acids (Figure 4). In this respect, the arsenite oxidase activity expressed by *Thiomonas* sp. (CARN2), associated with metabolisms such as iron oxidation and sulfur oxidation by *Acidithiobacillus* sp. (CARN5) and the *Gallionella*-related strain (CARN7), seems to be of prime importance in the co-precipitation of these inorganic elements, leading to the partial but efficient attenuation of this arsenic-contaminated ecosystem (Bruneel *et al.*, 2003; Casiot *et al.*, 2003; Duquesne *et al.*, 2003; Egal *et al.*, 2009, 2010). Other microorganisms, in particular 'Candidatus Fodinabacter communificans,' may recycle organic compounds released by others or provide them with essential cofactors, improving their biomineralization activities. First, CARN1 and CARN4 bins expressed genes involved in branched-chain amino acid and oligopeptide transport. Second, and unlike other Carnoulès bins, their genome carries *drm* and *punA* genes, suggesting that they can use purine as a carbon source (Schuch *et al.*, 1999). Third, genes involved in amino acid fermentation were also identified in both bins, for example those of the lysine pathway, which converts lysine into butyrate, acetate and ammonia (Kreimeyer *et al.*, 2007). Fourth, the CARN1 and CARN4 bins of 'Candidatus Fodinabacter communificans' carry the arginase-encoding gene *rocF* involved in urea biosynthesis, while a complete urease-encoding *ure* operon was present in *Thiomonas* sp. bin (CARN2). Fifth, genes involved in cobalamin biosynthesis, including the *cobSTU* operon, were identified in both CARN1 and CARN4 bins, while BtuC cobalamin transporters are possibly encoded by other bins, such as *Thiomonas* (CARN2) and *Acidithiobacillus* sp. (CARN5), as it may be observed in already sequenced related bacteria (<http://www.genoscope.cns.fr/agc/microscope/carnoulescope>). In *Rhodopseudomonas palustris* strain TIE-1, a CobS-like protein has been previously shown to be involved in iron oxidation, but the mechanism remains unclear (Jiao *et al.*, 2005). Interestingly, we showed that cobalamin strongly activates iron oxidation in *At ferrooxidans*, the first step in the natural remediation observed at the study site. Such a metabolic cooperation may thus be of great importance in the natural biomineralization observed at Carnoulès. Finally, cobalamin biosynthesis may also be useful to eukaryotes, in particular *Euglena* sp. present at the study site (Casiot *et al.*, 2004) whose cell cycle is

known to require this cofactor (Olaveson and Stokes, 1989; Bré *et al.*, 1981).

Taken together, our data provide evidence that at least seven bacteria are involved in the functioning of the AMD ecosystem under study. In particular, our observations support the existence of multiple metabolic cooperations between the Carnoulès microorganisms (Figure 4). They also highlight an indirect but crucial role of the first representative of a novel and uncultured bacterial phylum, that is 'Candidatus Fodinabacter communificans,' in the biomineralization processes in this arsenic-rich ecosystem. In the future, descriptive and functional genomic approaches such as those presented here should give an integrated view of the biological objects present in any environment, their relationships, their role in the nutrient biogeochemical cycles and their possible use in the development of novel methods of bioremediation. More routinely used, such strategies will lead to important advances in microbial ecology, revealing what was recently regarded as impossible to explore.

## Acknowledgements

AH-S, JC-A and DH were supported by a grant from the French Ministry of Education and Research and MM and FG-C by a grant from the Agence Nationale de la Recherche (ANR). Financial support came from the Université de Strasbourg (UdS), the Consortium National de Recherche en Génomique (CNRG), the Centre National de la Recherche Scientifique (CNRS) and the Agence Nationale de la Recherche (ANR) in the frame of the RARE and MicroScope projects. This work was done in the frame of the 'Groupement de Recherche—Métabolisme de l'Arsenic chez les Microorganismes (GDR2909-CNRS)' (<http://gdr2909.alsace.cnrs.fr/>).

## References

- Allen EE, Banfield JF. (2005). Community genomics in microbial ecology and evolution. *Nat Rev Microbiol* 3: 489–498.
- Altschul S, Madden T, Schaffer A, Zhang J, Zhang Z, Miller W *et al.* (1997). Gapped blast and psi-blast: a new generation of protein database search programs. *Nucleic Acids Res* 25: 3389–3402.
- Appia-Ayme C, Guiliani N, Ratouchniak J, Bonnefoy V. (1999). Characterization of an operon encoding two c-type cytochromes, an aa3-type cytochrome oxidase, and rusticyanin in *Thiobacillus ferrooxidans* ATCC 33020. *Appl Environ Microbiol* 65: 4781–4787.
- Arsène-Ploetze F, Koechler S, Marchal M, Coppée J-Y, Chandler M, Bonnefoy V *et al.* (2010). Structure, function, and evolution of the *Thiomonas* spp. genome. *PLoS Genet* 6: e1000859.
- Badger MR, Bek EJ. (2008). Multiple Rubisco forms in proteobacteria: their functional significance in relation to CO<sub>2</sub> acquisition by the CBB cycle. *J Exper Bot* 59: 1525–1541.
- Barreto M, Jedlicki E, Holmes DS. (2005). Identification of a gene cluster for the formation of extracellular polysaccharide precursors in the chemolithoautotroph *Acidithiobacillus ferrooxidans*. *Appl Environ Microbiol* 71: 2902–2909.
- Bertin PN, Médigue C, Normand P. (2008). Advances in environmental genomics: towards an integrated view of micro-organisms and ecosystems. *Microbiology* 154: 347–359.
- Beysersmann D, Hartwig A. (2008). Carcinogenic metal compounds: recent insight into molecular and cellular mechanisms. *Arch Toxicol* 82: 493–512.
- Bré MH, El Ferjani E, Lefort-Tran M. (1981). Sequential protein-dependent steps in the cell cycle initiation and completion of division in vitamin B12 replenished *Euglena gracilis*. *Protoplasma* 108: 301–318.
- Bruneel O, Duran R, Casiot C, Elbaz-Poulichet F, Personné J-C. (2006). Diversity of microorganisms in Fe-As-rich acid mine drainage waters of Carnoulès, France. *Appl Environ Microbiol* 72: 551–556.
- Bruneel O, Pascault N, Egal M, Bancon-Montigny C, Goñi-Urriza MS, Elbaz-Poulichet F *et al.* (2008). Archaeal diversity in a Fe-As rich acid mine drainage at Carnoulès (France). *Extremophiles* 12: 563–571.
- Bruneel O, Personné JC, Casiot C, Leblanc M, Elbaz-Poulichet F, Mahler BJ *et al.* (2003). Mediation of arsenic oxidation by *Thiomonas* sp. in acid-mine drainage (Carnoulès, France). *J Appl Microbiol* 95: 492–499.
- Bruneel O, Volant A, Gallien S, Chaumande B, Casiot C, Carapito C *et al.* (2011). Characterization of the active bacterial community involved in natural attenuation processes in arsenic-rich creek sediments. *Microb Ecol*; e-pub ahead of print 12 February 2011.
- Casiot C, Bruneel O, Personné JC, Leblanc M, Elbaz-Poulichet F. (2004). Arsenic oxidation and bioaccumulation by the acidophilic protozoan, *Euglena mutabilis*, in acid mine drainage (Carnoules, France). *Sci Total Environ* 320: 259–267.
- Casiot C, Morin G, Juillot F, Bruneel O, Personné JC, Leblanc M *et al.* (2003). Bacterial immobilization and oxidation of arsenic in acid mine drainage (Carnoulès creek, France). *Water Res* 37: 2929–2936.
- Caspi R, Foerster H, Fulcher CA, Kaipa P, Krummenacker M, Latendresse M *et al.* (2008). The MetaCyc database of metabolic pathways and enzymes and the BioCyc collection of pathway/genome databases. *Nucleic Acids Res* 36: D623–D631.
- Castresana J. (2000). Selection of conserved blocks from multiple alignments for their use in phylogenetic analysis. *Mol Biol Evol* 17: 540–552.
- Ciccarelli FD, Doerks T, von Mering C, Creevey CJ, Snel B, Bork P. (2006). Toward automatic reconstruction of a highly resolved tree of life. *Science* 311: 1283–1287.
- Davey ME, O'toole GA. (2000). Microbial biofilms: from ecology to molecular genetics. *Microbiol Mol Biol Rev* 64: 847–867.
- Denef VJ, Mueller RS, Banfield JF. (2010). AMD biofilms: using model communities to study microbial evolution and ecological complexity in nature. *ISME J* 4: 599–610.
- Dixon R, Kahn D. (2004). Genetic regulation of biological nitrogen fixation. *Na Rev Microbiol* 2: 621–631.
- Duquesne K, Lebrun S, Casiot C, Bruneel O, Personné JC, Leblanc M *et al.* (2003). Immobilization of arsenite and ferric iron by *Acidithiobacillus ferrooxidans* and its relevance in acid mine drainage. *Appl Env Microbiol* 69: 6165–6173.
- Duquesne K, Lieutaud A, Ratouchniak J, Muller D, Lett MC, Bonnefoy V. (2008). Arsenite oxidation by a chemoautotrophic moderately acidophilic *Thiomonas*

- sp.: from the strain isolation to the gene study. *Environ Microbiol* 10: 228–237.
- Edgar RC. (2004). MUSCLE: multiple sequence alignment with high accuracy and high throughput. *Nucleic Acids Res* 32: 1792–1797.
- Egal M, Casiot C, Morin G, Elbaz-Poulichet F, Cordier MA, Bruneel O. (2010). An updated insight into the natural attenuation of As concentrations in Reigous Creek (southern France). *Appl Geochem* 25: 1949–1957.
- Egal M, Casiot C, Morin G, Parmentier M, Bruneel O, Lebrun S *et al.* (2009). Kinetic control on the formation of tooeleite, schwertmannite and jarosite by *Acidithiobacillus ferrooxidans* strains in an As(III)-rich acid mine water. *Chem Geol* 265: 432–441.
- Escalante-Semerena fC. (2007). Conversion of cobinamide into adenosylcobamide in Bacteria and Archaea. *Bacteriol* 189: 4555–4560.
- Falkowski PG, Fenchel T, Delong EF. (2008). The microbial engines that drive Earth's biogeochemical cycles. *Science* 320: 1034–1039.
- Fitzpatrick TB, Amrhein N, Kappes B, Macheroux P, Tews I, Raschle T. (2007). Two independent routes of de novo vitamin B6 biosynthesis: not that different after all. *Biochem J* 407: 1–13.
- Friedrich B, Schwartz E. (1993). Molecular biology of hydrogen utilization in aerobic chemolithotrophs. *Ann Rev Microbiol* 47: 351–383.
- Gonzalez-Mendoza D, Morales-Trejo A, Brito-Vera H. (2009). A rapid and efficient method for isolation of total RNA from *Euglena gracilis* (Euglenoidea). *Genet Mol Res* 8: 482–486.
- Grove A. (2010). Functional evolution of bacterial histone-like HU proteins. *Curr Issues Mol Biol* 13: 1–12.
- Guindon S, Gascuel O. (2003). A simple, fast, and accurate algorithm to estimate large phylogenies by maximum likelihood. *Syst Biol* 52: 696–704.
- Hafnerburg G, Kothe E. (2007). Microbes and metals: interactions in the environment. *Basic Microbiol* 47: 453–467.
- Harrison JJ, Ceri H, Turner RJ. (2007). Multimetal resistance and tolerance in microbial biofilms. *Nat Rev Microb* 5: 928–938.
- Huynen MA, Bork P. (1998). Measuring genome evolution. *Proc Natl Acad Sci USA* 95: 5849–5856.
- Jiao Y, Kappler A, Croal LR, Newman DK. (2005). Isolation and characterization of a genetically tractable photoautotrophic Fe(II)-oxidizing bacterium, *Rhodospseudomonas palustris* strain TIE-1. *Appl Environ Microbiol* 71: 4487–4496.
- Johnson DB, Halberg KB. (2003). The microbiology of acidic mine waters. *Res Microbiol* 154: 466–473.
- Jones DT, Taylor WR, Thornton JM. (1992). The rapid generation of mutation data matrices from protein sequences. *Comput Appl Biosci* 8: 275–282.
- Karp P, Paley S, Romero P. (2002). The pathway tools software. *Bioinformatics* 18: S1–S8.
- Konopka A. (2009). What is microbial community ecology? *ISME J* 3: 1223–1230.
- Kreimeyer A, Perret A, Lechaplais C, Vallenet D, Médigue G, Salanoubat M *et al.* (2007). Identification of the last unknown genes in the fermentation pathway of lysine. *Biol Chem* 282: 7191–7197.
- Li Y-Q, Wan D-S, Huang S-S, Leng F-F, Yan L, Ni Y-Q *et al.* (2010). Type IV Pili of *Acidithiobacillus ferrooxidans* are necessary for sliding, twitching motility, and adherence. *Curr Microbiol* 60: 17–24.
- Lutters-Czekalla S. (1990). Lithoautotrophic growth of the iron bacterium *Gallionella ferruginea* with thio-sulfate or sulfide as energy source. *Arch Microbiol* 154: 417–421.
- Marchai M, Briandet R, Koechler S, Kammerer B, Bertin PN. (2010). Effect of arsenite on swimming motility delays surface colonization in *Herminiimonas arsenicoxydans*. *Microbiology* 156: 2336–2342.
- Morin G, Juillot F, Casiot C, Bruneel O, Personné JC, Elbaz-Poulichet F *et al.* (2003). Bacterial formation of tooeleite and mixed arsenic(III) or arsenic(V)-iron(III) gels in the Carnoulès acid mine drainage, France. A XANES, XRD, and SEM study. *Environ Sci Technol* 37: 1705–1712.
- Muller D, Médigue C, Koechler S, Barbe V, Barakat M, Talla E *et al.* (2007) A tale of two oxidation states: bacterial colonization of arsenic-rich environment. *PLoS Genet* 3: e53.
- Murray RGE, Stackebrandt E. (1995). Taxonomic note: implementation of the provisional status *Candidatus* for incompletely described procaryotes. *Int J Syst Bacteriol* 45: 186–187.
- Ning Z, Cox AJ, Mullikin JC. (2001). SSAHA: a fast search method for large DNA databases. *Genome Res* 11: 1725–1729.
- Olaveson MM, Stokes PM. (1989). Responses of the acidophilic alga *Euglena mutabilis* (Euglenophyceae) to carbon enrichment at pH 3. *Phycol* 25: 529–539.
- Perrière G, Duret L, Gouy M. (2000). HOBACGEN: database system for comparative genomics in bacteria. *Genome Res* 10: 379–383.
- Ram RJ, VerBerkmoes NC, Thelen MP, Tyson GW, Baker BJ, Blake RC *et al.* (2005). Community proteomics of a natural microbial biofilm. *Science* 308: 1915–1920.
- Schrader JA, Holmes DS. (1988). Phenotypic switching of *Thiobacillus ferrooxidans*. *Bacteriol* 170: 3915–3923.
- Schuch R, Garibian A, Saxild HH, Piggot PJ, Nygaard P. (1999). Nucleosides as a carbon source in *Bacillus subtilis*: characterization of the *drm-pupG* operon. *Microbiology* 145: 2957–2966.
- Silver S, Phung LT. (2005). Genes and enzymes involved in bacterial oxidation and reduction of inorganic arsenic. *Appl Environ Microbiol* 71: 599–608.
- Simmons SL, DiBartolo G, Denef VJ, Goltzman DSA, Thelen MP, Banfield JF. (2008). Population genomic analysis of strain variation in *Leptospirillum* Group II bacteria involved in acid mine drainage formation. *PLoS Biol* 6: e177.
- Soutourina OA, Bertin PN. (2003). Regulation cascade of flagellar expression in Gram-negative bacteria. *FEMS Microbiol Rev* 27: 505–523.
- Stolz JF, Basil P, Santini JM, Oremland RS. (2006). Arsenic and selenium in microbial metabolism. *Annu Rev Microbiol* 60: 107–130.
- Talavera G, Castresana J. (2007). Improvement of phylogenies after removing divergent and ambiguously aligned blocks from protein sequence alignments. *Syst Biol* 56: 564–577.
- Tamura K, Dudley J, Nei M, Kumar S. (2007). MEGA4: molecular evolutionary genetics analysis (MEGA) software version 4.0. *Mol Biol Evol* 24: 1596–1599.
- Tendeng C, Bertin PN. (2003). H-NS in Gram-negative bacteria: a family of multifaceted proteins. *Trends Microbiol* 11: 511–518.
- Tyson GW, Chapman J, Hugenholtz P, Allen EE, Ram RJ, Richardson PM *et al.* (2004). Community structure

- and metabolism through reconstruction of microbial genomes from the environment. *Nature* 428: 37–43.
- Vallenet D, Engelen S, Mornico D, Cruveiller S, Fleury L, Lajus A *et al.* (2009). MicroScope: a platform for microbial genome annotation and comparative genomics. *Database* 2009: bap021.
- Vaughan DJ. (2006). Arsenic. *Elements* 2: 71–75.
- Wang Q, Garrity GM, Tiedje JM, Cole JR. (2007). Naive Bayesian classifier for rapid assignment of rRNA sequences into the new bacterial taxonomy. *Appl Environ Microbiol* 73: 5261–5267.
- Weiss S, Carapito C, Cleiss J, Koechler S, Turlin E, Coppee J-Y *et al.* (2009). Enhanced structural and functional genome elucidation of the arsenite-oxidizing strain *Herminiimonas arsenicoxydans* by proteomics data. *Biochimie* 91: 192–203.
- Wilmes P, Andersson AF, Lefsrud MG, Wexler M, Shah M, Zhang B *et al.* (2008). Community proteogenomics highlights microbial strain-variant protein expression within activated sludge performing enhanced biological phosphorus removal. *ISME J* 2: 853–864.
- Wilmes P, Simmons SL, Deneff VJ, Banfield JF. (2009). The dynamic genetic repertoire of microbial communities. *FEMS Microbiol Rev* 33: 109–132.
- Yarzabal A, Brasseur G, Ratouchniak J, Lund K, Lemesle-Meunier D, DeMoss JA *et al.* (2002). The high-molecular-weight cytochrome *c* Cyc2 of *Acidithiobacillus ferrooxidans* is an outer membrane protein. *J Bacteriol* 184: 313–317.