



**HAL**  
open science

## Evolution of prodeltas : a print of glacier melting processes

Agnès Baltzer, Marine Bourriquen, Jérôme Fournier, Denis Mercier, Stéphane Costa, Florian Tolle, Eric Bernard, Maria Jensen

### ► To cite this version:

Agnès Baltzer, Marine Bourriquen, Jérôme Fournier, Denis Mercier, Stéphane Costa, et al.. Evolution of prodeltas : a print of glacier melting processes. Svalbard Science Conference, Nov 2017, Oslo, Norway. hal-01631227

**HAL Id: hal-01631227**

**<https://hal.science/hal-01631227>**

Submitted on 8 Nov 2017

**HAL** is a multi-disciplinary open access archive for the deposit and dissemination of scientific research documents, whether they are published or not. The documents may come from teaching and research institutions in France or abroad, or from public or private research centers.

L'archive ouverte pluridisciplinaire **HAL**, est destinée au dépôt et à la diffusion de documents scientifiques de niveau recherche, publiés ou non, émanant des établissements d'enseignement et de recherche français ou étrangers, des laboratoires publics ou privés.



Baltzer Agnès <sup>1</sup>, Bourriquen Marine <sup>1</sup>, Fournier Jérôme <sup>2</sup>, Mercier Denis <sup>3</sup>, Costa Stéphane <sup>4</sup>  
Tolle Florian <sup>5</sup>, Bernard Eric <sup>5</sup>, Jensen Maria <sup>6</sup>

The Research Council of Norway

1 Laboratory LETG-Nantes-Géolittomer (UMR 6554), CNRS & University of Nantes, Nantes, France, 2 National Museum of Natural History, Laboratory BOREA (UMR 7208), France, 3 University Paris-Sorbonne & laboratory ENeC (UMR 8185) CNRS & Paris Sorbonne University, Paris, France, 4 Laboratory M2C (UMR 6143), CNRS & University of Caen, Caen, France, 5 Laboratory Thema (UMR 6049), CNRS & University of Franche Comté, Besançon, France, 6 University Centre in Svalbard (UNIS), Longyearbyen, Svalbard  
\*Corresponding author: agnes.baltzer@univ-nantes.fr

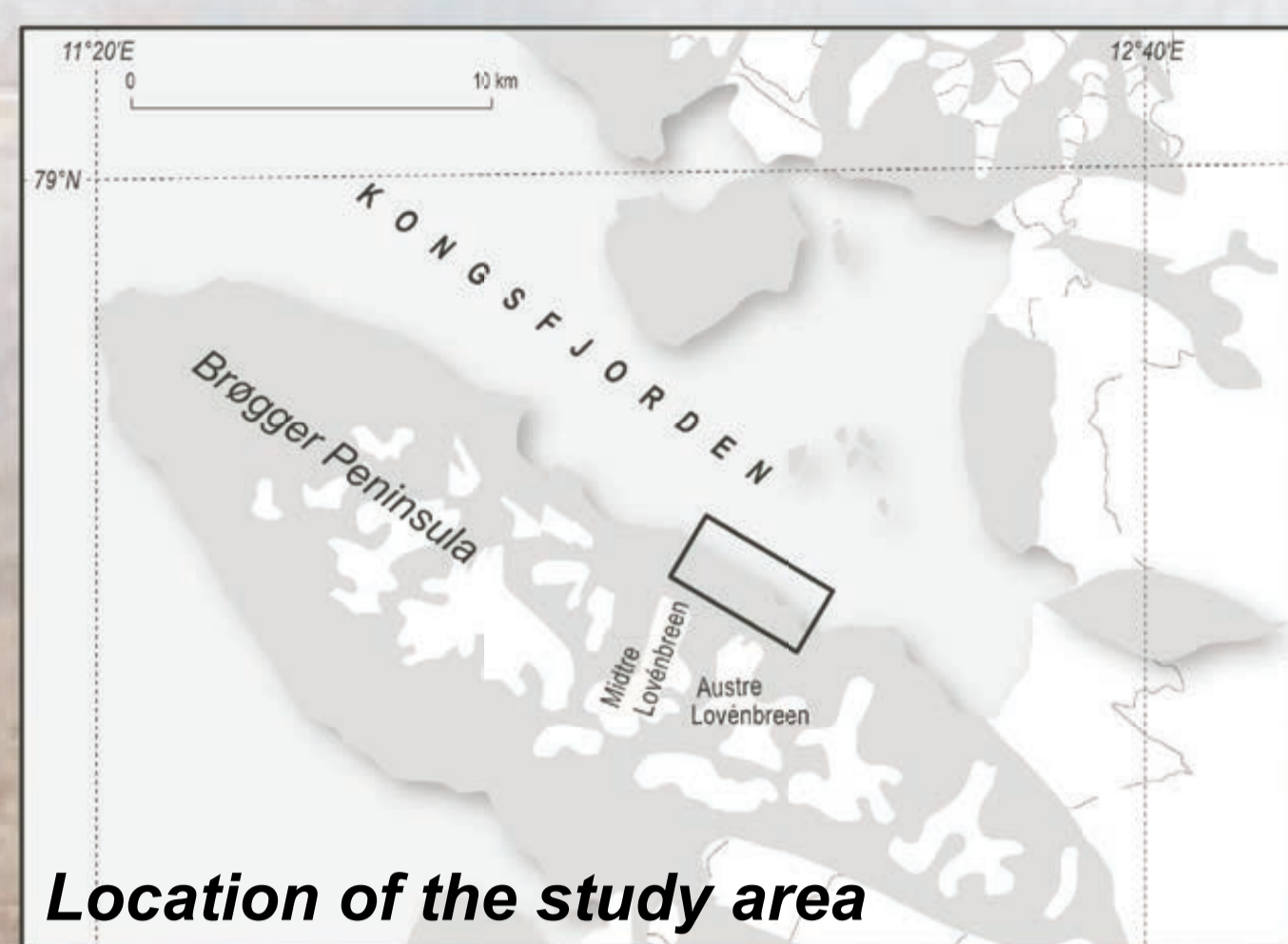
## Introduction

### - Arctic coastal areas:

- faster and greater modifications than other coastlines (Overduin et al. 2014).
- little known about the physical processes that control coastal high-latitudes and how they will evolve (Zagorski et al. 2013).

- Purpose: to understand the post-Little Ice Age sedimentary transfer in Kongsfjorden.

↳ Quantification of the coastal evolution from 1966 to 2017.



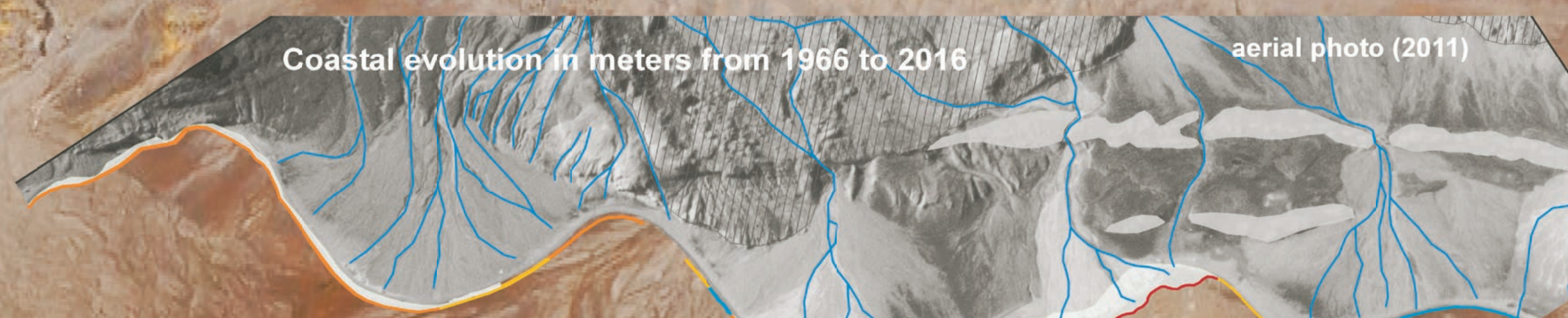
Location of the study area

## Materials and methods

### - Shoreline evolution:

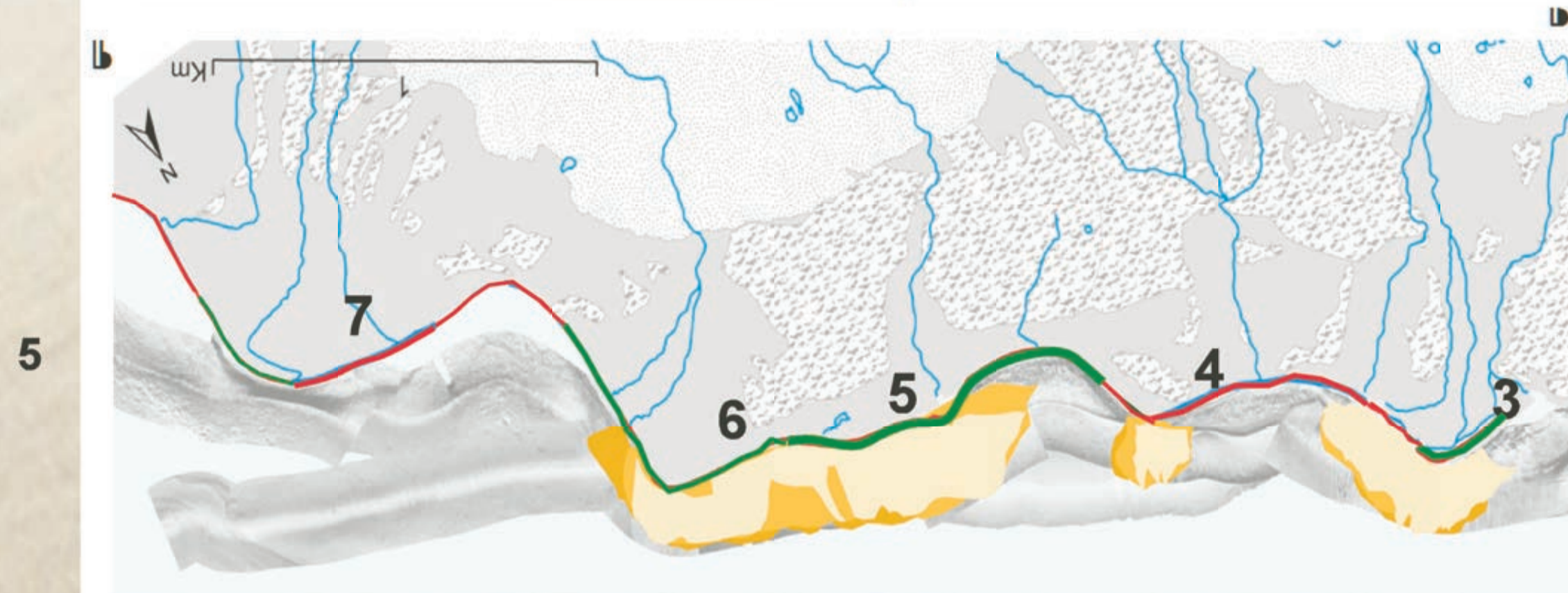
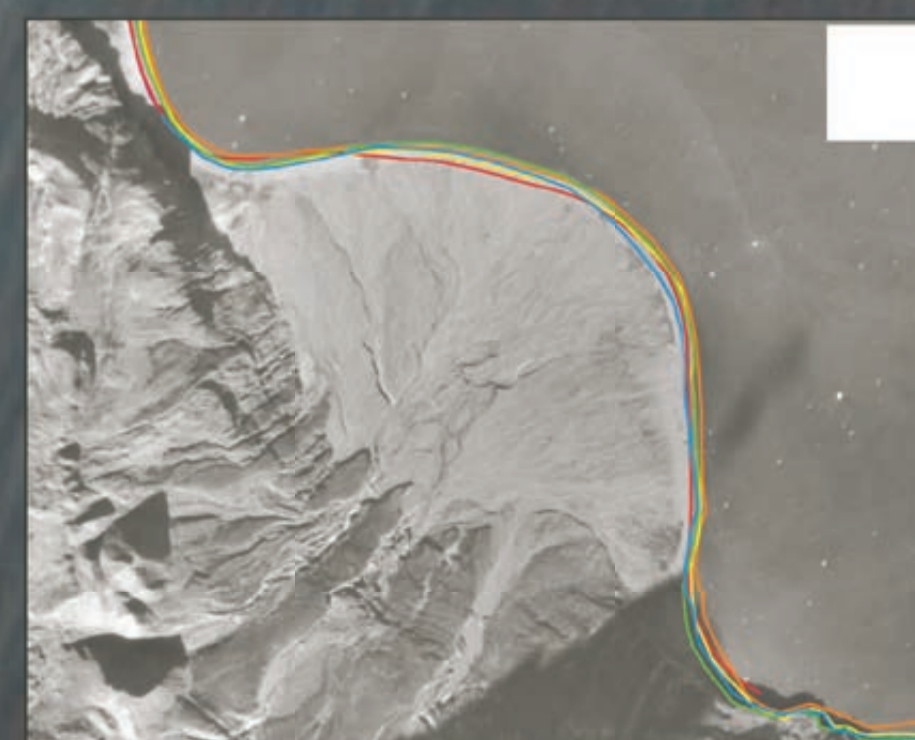
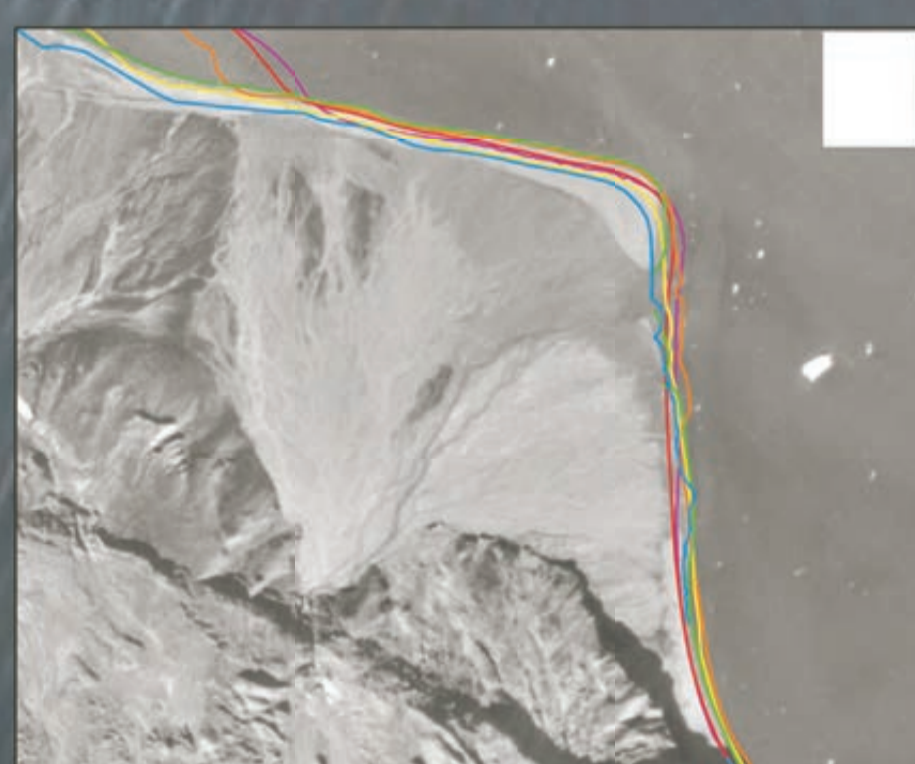
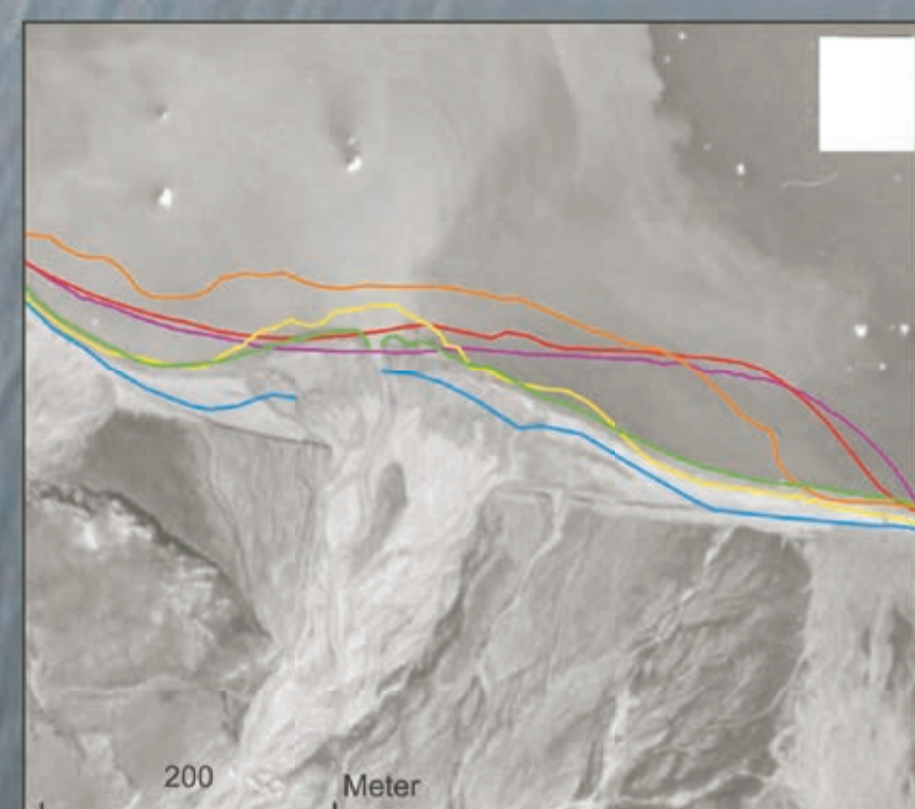
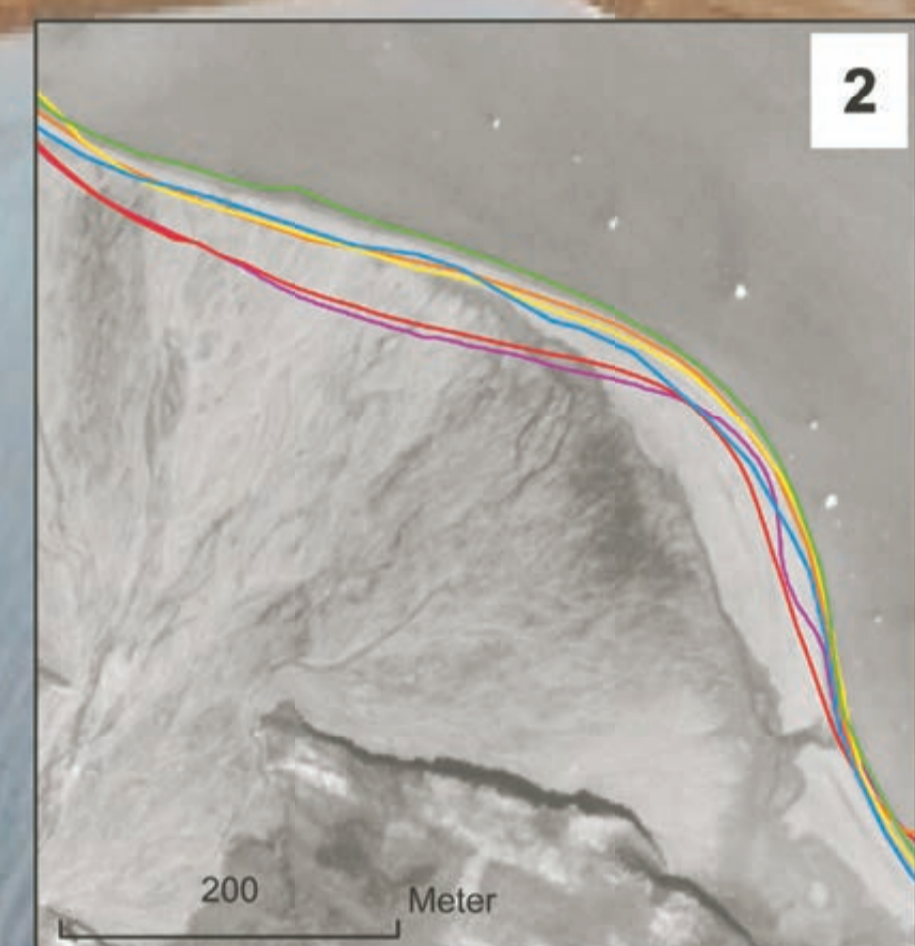
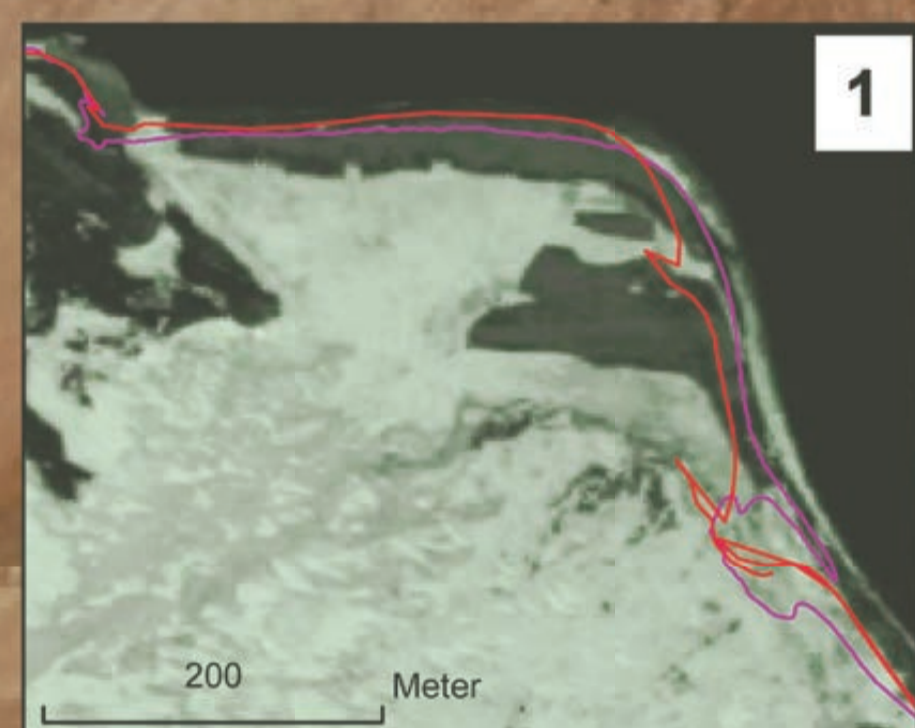
- 1966-1990: interpretation of aerial photographs from 1966, 1971, 1977, 1990.
- 2011-2014: dGPS data
- 2009, 2011, 2012, 2016, 2017: sonar data

→ Reference line parallel to the coast with reference points every 50 m.  
Shoreline evolution measured by calculation between reference points



- Hydrographic network (1990)
- Coastal progradation
- Bedrock ridge (calcareous)
- Morainal area
- Glaciers

### The five deltas and the shoreline data



Prodeltas evolution in meters from 1966 to 2012 from side scan mosaics

Prodelta 3 : 2009 : 68 000 m<sup>2</sup> - 2012 : 60 300 m<sup>2</sup>  
Prodelta 4 : 2009 : 15 542 m<sup>2</sup> - 2012 : 24 300 m<sup>2</sup>  
Prodelta 5 & 6 : 2009 : 106 500 m<sup>2</sup> - 2012 : 135 500 m<sup>2</sup>

## Results & Questions

**Question 1 : What are the effects of the glacier retreat on the hydrographic network ?**  
First results show a decrease of the drainage density and the width of the active band which conducts to a clear concentration of the hydrographic network.

**Question 2 : What is the Kongsfjorden line evolution ?**  
Coastal areas supplied by the hydrographic network become smaller  
Global progradation of the coast observed from 1966 to 2016 is focused on specific areas (linked to the prodeltas localisation)

**Question 3 : What does happen to the sediments exported into the Kibgsfjorden ?**  
A part of these sedimentary supply is stored into the prodeltas with an extension of 40 000 m<sup>2</sup> from 2009 to 2012 ( will be calculated for 2017). It should be important to estimate the volume displaced by the currents (drift)

Coastal evolution in m/yr from 1966 to 2014  
Aerial photographs of 1966 and 1990, University of Franche Comté.

Photo from Alain Robert (2016)