



HAL
open science

Methodology for earthquake rupture rate estimates of fault networks: example for the western Corinth rift, Greece

Thomas Chartier, Oona Scotti, Hélène Lyon-Caen, Aurélien Boiselet

► To cite this version:

Thomas Chartier, Oona Scotti, Hélène Lyon-Caen, Aurélien Boiselet. Methodology for earthquake rupture rate estimates of fault networks: example for the western Corinth rift, Greece. *Natural Hazards and Earth System Sciences*, 2017, 17 (10), pp.1857 - 1869. 10.5194/nhess-17-1857-2017 . hal-01625615

HAL Id: hal-01625615

<https://hal.science/hal-01625615>

Submitted on 27 Oct 2017

HAL is a multi-disciplinary open access archive for the deposit and dissemination of scientific research documents, whether they are published or not. The documents may come from teaching and research institutions in France or abroad, or from public or private research centers.

L'archive ouverte pluridisciplinaire **HAL**, est destinée au dépôt et à la diffusion de documents scientifiques de niveau recherche, publiés ou non, émanant des établissements d'enseignement et de recherche français ou étrangers, des laboratoires publics ou privés.



Methodology for earthquake rupture rate estimates of fault networks: example for the western Corinth rift, Greece

Thomas Chartier^{1,2}, Oona Scotti², H el ene Lyon-Caen¹, and Aur elien Boiselet^{1,2,a}

¹Laboratoire de g eologie, Ecole Normale Sup erieure, CNRS UMR 8538, PSL Research University, Paris, 75005, France

²Bureau d'Evaluation des Risques Sismiques pour la S uret e des Installations, Institut de Radioprotection et de S uret e Nucl eaire, Fontenay-aux-Roses, France

^anow at: Axa Global P&C, Paris, 75008, France

Correspondence to: Thomas Chartier (chartier@geologie.ens.fr)

Received: 30 March 2017 – Discussion started: 4 April 2017

Revised: 11 August 2017 – Accepted: 4 September 2017 – Published: 27 October 2017

Abstract. Modeling the seismic potential of active faults is a fundamental step of probabilistic seismic hazard assessment (PSHA). An accurate estimation of the rate of earthquakes on the faults is necessary in order to obtain the probability of exceedance of a given ground motion. Most PSHA studies consider faults as independent structures and neglect the possibility of multiple faults or fault segments rupturing simultaneously (fault-to-fault, FtF, ruptures). The Uniform California Earthquake Rupture Forecast version 3 (UCERF-3) model takes into account this possibility by considering a system-level approach rather than an individual-fault-level approach using the geological, seismological and geodetical information to invert the earthquake rates. In many places of the world seismological and geodetical information along fault networks is often not well constrained. There is therefore a need to propose a methodology relying on geological information alone to compute earthquake rates of the faults in the network. In the proposed methodology, a simple distance criteria is used to define FtF ruptures and consider single faults or FtF ruptures as an aleatory uncertainty, similarly to UCERF-3. Rates of earthquakes on faults are then computed following two constraints: the magnitude frequency distribution (MFD) of earthquakes in the fault system as a whole must follow an a priori chosen shape and the rate of earthquakes on each fault is determined by the specific slip rate of each segment depending on the possible FtF ruptures. The modeled earthquake rates are then compared to the available independent data (geodetical, seismological and paleoseismological data) in order to weight different hypothesis explored in a logic tree.

The methodology is tested on the western Corinth rift (WCR), Greece, where recent advancements have been made in the understanding of the geological slip rates of the complex network of normal faults which are accommodating the $\sim 15 \text{ mm yr}^{-1}$ north–south extension. Modeling results show that geological, seismological and paleoseismological rates of earthquakes cannot be reconciled with only single-fault-rupture scenarios and require hypothesizing a large spectrum of possible FtF rupture sets. In order to fit the imposed regional Gutenberg–Richter (GR) MFD target, some of the slip along certain faults needs to be accommodated either with interseismic creep or as post-seismic processes. Furthermore, computed individual faults' MFDs differ depending on the position of each fault in the system and the possible FtF ruptures associated with the fault. Finally, a comparison of modeled earthquake rupture rates with those deduced from the regional and local earthquake catalog statistics and local paleoseismological data indicates a better fit with the FtF rupture set constructed with a distance criteria based on 5 km rather than 3 km, suggesting a high connectivity of faults in the WCR fault system.

1 Introduction

The goal of probabilistic seismic hazard assessment (PSHA) is to estimate the probability of exceeding various ground-motion levels at a site (or a map of sites) given the rates of all possible earthquakes. The first step of PSHA following a Cornell–McGuire approach (Cornell, 1968; McGuire, 1976) is the characterization of the seismic sources. For re-

gions where active faults have been identified and their slip rates are known, several methods have been proposed in order to calculate the rate of earthquakes occurring on these faults. The most commonly used methods consider faults as independent structures on which the strong earthquakes are located (e.g., SHARE project in Europe, Woessner et al., 2015; Yazdani et al., 2016, in Iran; TEM model in Taiwan, Wang et al., 2016). In these PSHA studies, a background seismicity will generate earthquakes up to a threshold magnitude (M_w) of 6.0 or 6.5, beyond which earthquakes are generated on the faults. The rate of earthquakes for these larger magnitudes is based on geological and paleoseismological records, and the maximum magnitudes depend on the physical dimensions of the fault under consideration. In the resulting model, the rate of lower magnitudes is controlled by seismological information and the rate of stronger magnitudes by geological information. In cases where large historical earthquakes are associated with multiple fault segments, the individual fault segments described by the geologists in the field are regrouped in a larger fault source and a mean slip rate is attributed to the fault source. A specific magnitude frequency distribution (MFD), often Gutenberg–Richter (GR) (Gutenberg and Richter, 1944) or characteristic earthquake (Wesnousky, 1986), describing the mean slip-rate-based earthquake rate on the fault is attributed to each fault source. This process requires simplifying fault complexity in terms of geometry and slip rate and does not allow complex ruptures that propagate from one fault source to an adjacent one.

In the past decades, the quality of observations has improved and our understanding of earthquakes has grown (proceedings of the 2017 Fault2SHA meeting). We observe more and more complex earthquake ruptures propagating on several neighboring faults. There is thus a need for hazard models to accurately represent the fault and rupture complexity observed in the field by geologists and to correctly distinguish aleatory from epistemic uncertainties.

Toro et al. (1997) define epistemic uncertainty as “uncertainty that is due to incomplete knowledge and data about the physics of the earthquake process. In principle, epistemic uncertainty can be reduced by the collection of additional information”. Aleatory uncertainty, on the other hand, is an “uncertainty that is inherent to the unpredictable nature of future events”; in this respect a fault-to-fault (FtF) rupture should be treated as an aleatory uncertainty since it is linked to the randomness of the seismic phenomenon.

In order to allow FtF ruptures, the Working Group on California Earthquake Probabilities (WGCEP-2003) for the San Francisco Bay region developed a methodology that explores possible FtF ruptures in a logic tree. Each branch of the logic tree represents a seismic hazard model, and the rate of the corresponding FtF rupture scenario is obtained by weighting the branches. In the hazard study of the Marmara Region in Turkey, Gulerce and Ocak (2013) used this approach and set the weight of each branch (or rupture scenario) such

that the mean seismicity rate modeled by the logic tree fits the recorded seismicity rate around the fault of interest. This method treats the uncertainty of FtF ruptures as an epistemic uncertainty in the PSHA calculation.

The Uniform California Earthquake Rupture Forecast version 3 (UCERF-3) model was developed using a novel methodology that treats all possible combinations of FtF rupture scenarios within the same branch of the logic tree as an aleatory uncertainty (Field et al., 2014). Per their terminology, faults are divided into smaller sections and all possible section-to-section ruptures are investigated. The possibility of ruptures happening is controlled by a set of geometric and physical rules and the rate of earthquakes is computed using a “grand inversion” of the seismological, geological, paleoseismological and geodetical data available in California. The regional GR MFD of earthquakes of California and the geodetical deformation are used as a target for the total earthquake rupture forecast in each deformation model. This grand inversion relies also on estimates of the creep rate on faults deduced from local deformation data when available.

For many fault networks, only sparse seismological and geodetical data are available, and the geological record is often the most detailed source of information concerning the faults’ activity. In such cases, it is necessary to develop a methodology that allows building seismic hazard models relying only on geological data and yet allowing FtF ruptures as an aleatory uncertainty. The sparse geodetical, seismological and paleoseismological data can then be used as a means of comparison to help weighting the different input hypothesis.

In this study we propose such a methodology based on the slip-rate budget of each fault, FtF ruptures hypothesis and assumptions on the shape of the MFD defined for the fault system as a whole. The methodology is developed so as to be flexible and applicable to regions where data on faults, geodesy and seismicity may be sparse. The rate of earthquakes on faults computed using geological information (slip rates) and is then compared to other sources of information such as the regional and local earthquake catalogs and the paleoseismic data in order to weight the different epistemic uncertainty explored in the logic tree. Moreover, it is also known that faults accommodate important amounts of slip in either post-seismic slip or in creep events (e.g., L’Aquila earthquake 2009; Cheloni et al., 2014; Napa earthquake 2014; Lienkaemper et al., 2016). These phenomena, called non-main-shock slip (NMS) later on, are integrated in the slip rates deduced from geological information and should not be converted into earthquake rates when computing seismic hazard. The methodology presented in this study allows part of the geological slip rate to be considered as NMS slip rate.

We use this methodology to generate fault-based hazard models for the western Corinth rift (WCR), Greece, which has been studied for the past decade by the Corinth Rift Laboratory Working Group (CRL-WG) (Lyon-Caen et al., 2004;

Bernard et al., 2006; Lambotte et al., 2014). A large number of active faults have been identified in this area, and a consensus about their possible geometries and activity rates has been reached within the CRL-WG (Boiselet, 2014). We used this geologic information to test our modeling approach and explore different epistemic uncertainties in a logic tree. Finally, we compared the modeled earthquake rates of each fault with seismological and paleoseismological data in order to weight the hypothesis in the logic tree.

2 Novel methodology for taking faults into account in PSHA

In most regions of the world the amount of data available to model faults in a PSHA study is often sparse and uncertain. However, the need to consider such data in PSHA is increasing, and the methods to properly incorporate the available geological information in the hazard models are still missing. In this context, we propose building a methodology that allows considering all the available information on faults, allows setting rules to define FtF ruptures and considers single faults or FtF ruptures as an aleatory uncertainty.

Our iterative method allows converting the slip-rate budget of each individual fault rate of earthquakes by requiring that the resulting regional MFD of earthquakes in the whole fault system follows an imposed shape. The MFD shape of each individual fault will thus be a result of the iterative process and not an imposed parameter.

The proposed method is presented here in a nutshell and illustrated in Fig. 1.

1. The necessary input data include the following:
 - A definition of the 3-D geometry of the fault system.
 - An estimate of the geological slip rates of each individual fault that determines the slip-rate budget of the fault.
2. Setting up the methodology requires the following:
 - Choosing suitable scaling laws to estimate the maximum magnitude each fault can host.
 - Assuming the minimum magnitude of earthquakes possible on the faults (M_w 5.0 in this study).
 - Hypothesizing FtF rupture scenarios based on some rules. In this study only a simple distance rule is used to define FtF ruptures. In future developments, more physics-based approaches could be explored. In the example presented in Fig. 1a, the three faults (fault 1, fault 2 and fault 3) are considered to be sufficiently close to each other; thus, they can either rupture individually (F_1 , F_2 , F_3) or in FtF ruptures ($F_1 + F_2$, $F_2 + F_3$ or $F_1 + F_2 + F_3$).

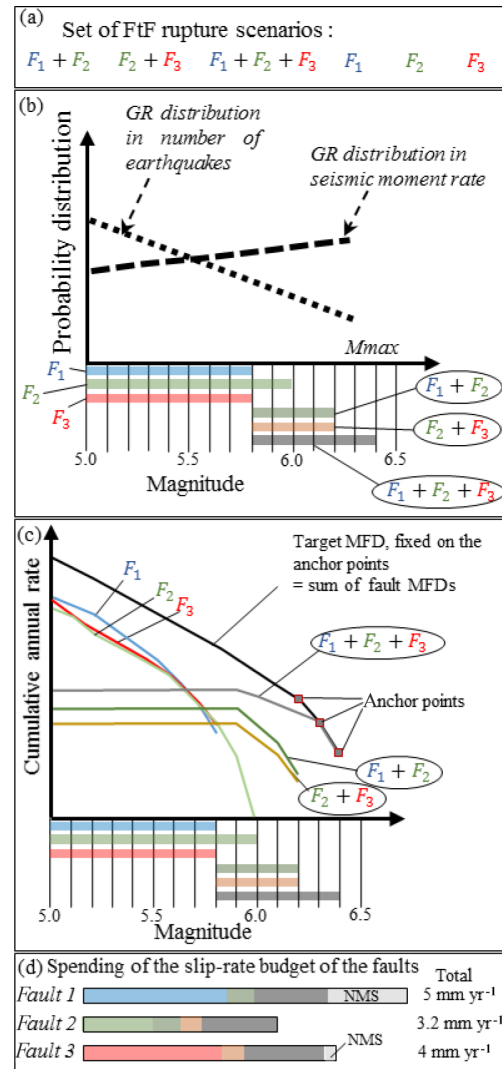


Figure 1. Illustration of the methodology. (a) Set of FtF rupture scenarios. (b) Picking of the magnitude bins and of the sources. (c) Building the target MFD: the black curve is the target MFD anchored at the mean of the three highest magnitude bins (magnitude bin of 0.1). The sum of the resulting MFDs of the six sources has to be equal to the target MFD. (d) Visualization of the partitioning by the iterative methodology of each fault’s slip-rate budget (colors correspond to the individual rupture or the FtF rupture; NMS is non-main-shock slip).

- Imposing a shape for the target MFD for the whole fault system. In this study a GR MFD distribution is assumed.
3. Three pre-computational steps are performed to carry out the following:
 - To calculate all possible magnitude bins each fault and FtF rupture scenario can accommodate according to each scaling law considered (Fig. 1b).

- To calculate the number of incremental quantities of slip rate (dsr) contained in each fault budget. In the example, fault 1, fault 2 and fault 3 have a slip-rate budget of 5, 3.2 and 4 mm yr⁻¹ respectively (Fig. 1d). Therefore, considering a dsr size of 0.01 mm yr⁻¹, the faults budgets will be consumed after 500, 320 and 400 dsr respectively. The slip-rate budget of each fault may be spent along individual faults and/or FtF rupture scenarios.
- To convert the target MFD, expressed in terms of rate of earthquakes, into moment rates (Fig. 1b). This target MFD will be used to pick the magnitude bin on which an increment dsr will be spent. Notice that the formulation in terms of moment rate implies that greater magnitudes are more likely to be picked.

4. Iterative process is described as follows:

- First, the bin of magnitude (of width 0.1) where a dsr will be spent is picked according to the target MFD for the whole fault system in terms of moment rate.
- Then, in this bin of magnitude M_i , a seismotectonic source S_i (an individual fault or an FtF scenario) that can host this magnitude is picked randomly. The increment of moment rate $d\dot{M}_0$ for this source is calculated following Eq. (1), and the rate of earthquakes increment dr_e is calculated using Eq. (2).

$$d\dot{M}_0 = \mu \cdot A \cdot dsr \quad (1)$$

$$dr_e(M_i) = \frac{d\dot{M}_0}{M_0(M_i)}, \quad (2)$$

where $d\dot{M}_0$ is the increment of moment rate for the source S_i , μ the shear modulus of the fault, A the area of the source, dsr the increment of slip rate spent, $dr_e(M_i)$ the increment of the rate of magnitude M_i , and $M_0(M_i)$ the seismic moment of a moment magnitude M_w defined by Hanks and Kanamori (1979):

$$M_w = \frac{2}{3} \log(M_0) - 10.7. \quad (3)$$

- At each iteration, the slip-rate budget of the faults participating in the scenario accommodating the earthquakes of the three highest magnitude bins (0.3 being the range of uncertainties in the scaling laws used to assess the maximum magnitude) is checked:
 - If there is still a portion of the slip-rate budget to be spent, the dr_e calculated is added to the rate of earthquakes of magnitude M_i for the source S_i .

- If one of the faults of the FtF rupture generating the largest earthquake has exhausted its slip-rate budget, the final rates of the highest magnitude earthquakes are reached. Then, knowing the shape of the imposed target MFD, the target rate at the fault system level for all magnitudes bins is known (Fig. 1c). At this stage, an additional check is performed:

- if adding the dr_e calculated for magnitude M_i onto the source S_i leads to the exceeding of the target MFD for this magnitude, then this dr_e is not added to the source S_i and the increment dsr of this computation step is considered as NMS slip;
- if adding the dr_e to the source S_i does not lead to the exceeding of the target MFD, this dr_e is added to the source S_i .

- The increment of slip rate dsr is then removed from the slip-rate budget of the fault or the faults involved in source S_i .
- If the slip-rate budget of each fault is exhausted, the fault and the corresponding FtF rupture scenarios the fault is involved in are removed and cannot be picked anymore in subsequent iterations of the computation.
- These steps are repeated until all the slip-rate budgets of all the faults in the system are spent either on single-fault ruptures, FtF ruptures or NMS slips.

The output of this process is an earthquake rupture rate for different magnitudes for each fault and FtF rupture scenario in the model, considered as aleatory uncertainty. We also record how the slip-rate budget of each fault is partitioned between the different FtF ruptures and how much NMS slip was needed on each fault in order to fit the target MFD shape (here GR MFD) with a given set of FtF rupture scenarios (Fig. 1d). In the example, fault 1 spends 43 % of its budget on single-fault ruptures (blue color), 7 % on F1 + F2 ruptures (dark green), 23 % on F1 + F2 + F3 ruptures (dark grey) and 27 % on the NMS slips (light grey). On the other hand, 100 % of the slip-rate budget of the slower moving fault (i.e., fault 2) is converted into earthquake rates (0 % NMS) and limits the rate of the largest magnitude earthquakes (F1 + F2 + F3) (see Supplement).

A simplified example of the application of this methodology based on only two faults is presented in the Supplement to this paper. This example illustrates step by step the way in which the proposed methodology allows the transformation of slip-rate budgets of faults into earthquake rates.

Post-processing then includes the following:

- Exploring the epistemic uncertainties: Many assumptions have to be made when setting up the methodology (scaling law, FtF rupture set, faults param-

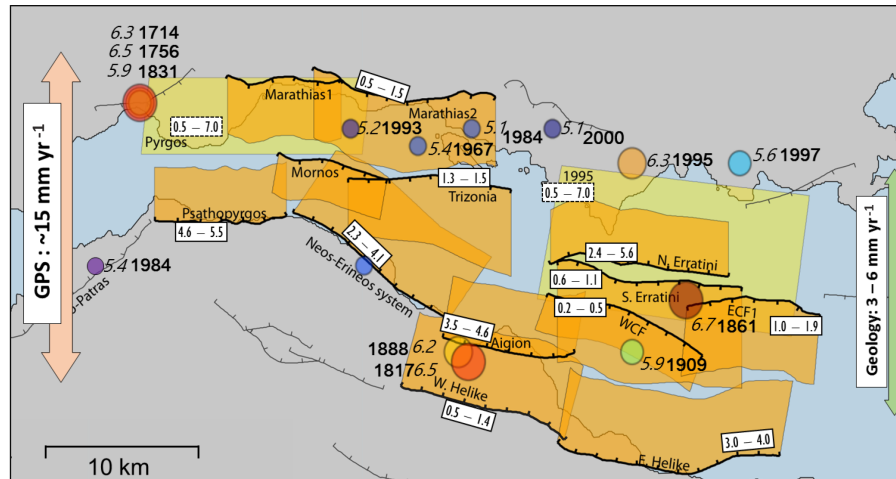


Figure 2. Map of the active faults of the western part of the Corinth rift (modified from Boiselet, 2014). The orange polygons are the surface projection of the active faults. The yellow polygons are the surface projection of the blind faults (Pyrgos fault and 1995 fault). Earthquakes of the catalog during the complete period are represented by circles with color and size depending on the magnitude. The date and magnitude of earthquake are indicated. The minimum and maximum values (mm yr^{-1}) of the slip rates of the faults are indicated in the white boxes. The green arrow shows an approximation of the rift extension calculated by projecting horizontally the faults' slip rate, and the pink arrow shows the extensional rate of the rift measured by GPS.

eters, etc.), and the different possible hypothesis should be explored in a logic tree.

– Reality checks:

The last step of the methodology involves comparing the modeled earthquake rates with independent data, such as the seismicity rates deduced from the catalog and paleoearthquake rates deduced from trench studies. Each branch of the logic tree is then weighted according to its performance with these independent data.

In this study, we applied the proposed methodology to a well-documented rifting zone in the Aegean Sea (Fig. 2).

3 Application to the western Corinth rift fault system

The east–west striking Corinth rift is the most seismically active structure in Europe with several earthquakes larger than M_w 5.5 recorded in the historical times as well as in the instrumental period (e.g., Jackson et al., 1982; Papazachos and Papazachou, 2003; Makropoulos et al., 2012). The Corinth Rift Laboratory was set up in 2001 in the western and most seismically active part of the rift (Lyon-Caen et al., 2004) with the goals of understanding the rifting process and providing key elements for the seismic hazard assessment of the region.

The geodetical deformation measured by Global Positioning System (GPS) shows a highly localized opening of the Corinth rift at a rate of 10 mm yr^{-1} in the east and 15 mm yr^{-1} in the west (Avallone et al., 2004) over a width of less than 20 km, inducing a high strain rate. This deformation is accommodated by a complex network of both north-

and south-dipping normal faults. Geological studies of these faults have shown that the north-dipping faults located on the southern coast have a higher slip rate than the south-dipping northern faults, giving the rift its asymmetrical structure. In the south, the Peloponnese is uplifted by the activity of these faults (Armijo et al., 1996; Ford et al., 2013), and in the north the coast line is subsiding.

The western Corinth rift fault slip rates were inferred from the displacement of geologic markers in the field or from seismic profiles on each individual fault, with the exception of the two blind faults identified by their recent seismic activity (1995 fault, Bernard et al., 1997 and Pyrgos fault, Sokos et al., 2012) and for which the microseismicity recorded close to the fault was transformed into the slip rate on the fault plane. These latter slip rates are therefore subject to a very large uncertainty. The estimated geological extension rate expressed by the sum of the horizontal projection of the geological slip rates of the faults is in the range of 3 to 6 mm per year, which is three times less than the geodetical extension rate. Given this disagreement, the WCR is a good candidate to test whether the earthquake rates calculated using our methodology, which relies only on geological information, can account for the occurrence of the large earthquakes that have been documented in the region (Albini et al., 2017).

The WCR fault system has been described in detail by Boiselet (2014), who defined a model for the fault system, including geometries and slip rates for each fault (Fig. 2, Table 1) and a set of possible FtF ruptures (hereafter model B14). The B14 model proposes a set of FtF rupture scenarios (Table 2) assuming that two neighboring faults can make up an FtF scenario only if they are less than 3 km apart. In

Table 2. Rupture scenarios considered in each model. Branch B14_s considers only the single-fault ruptures. Branch B14 considers the single-fault ruptures and the FtF ruptures with a 3 km distance criteria. Branch B14_hc considers the single-fault ruptures and the FtF ruptures with a 3 and a 5 km distance criteria. Mmax values are calculated using the equations for normal faults based on the rupture area. WC94: Wells and Coppersmith (1994); Le10: Leonard (2010).

FtF sets	Faults involved in the scenario					Mmax	
						WC94	Le10
B14, B14_hc, B14_s	All the single-fault ruptures					see Table 1	
3 km distance criteria	f3	f2				6.2	6.2
	f3	f2	f1			6.4	6.2
	f2	f1				6.2	6.0
	f4	f5				6.3	6.2
B14	f1	f13				6.2	6.2
B14_hc	f4	f12				6.4	6.2
	f4	f8				6.4	6.2
	f4	f8	f5			6.5	6.4
	f4	f8	f9			6.5	6.4
	f8	f9				6.2	6.0
5 km distance criteria	f11	f6				6.3	6.3
	f11	f6	f1			6.4	6.5
	f11	f6	f2			6.5	6.5
	f11	f6	f2	f1		6.6	6.5
B14_hc	f3	f5				6.2	6.2
	f3	f7				5.8	5.8
	f3	f9	f7			6.2	6.1
	f3	f8	f9	f7		6.4	6.5
	f3	f4	f2	f1		6.5	6.6
	f4	f7				6.2	6.2
	f4	f8	f7			6.4	6.5
	f4	f8	f9	f7		6.5	6.5
	f8	f10				6.3	6.3
	f3	f6	f2	f1		6.5	6.5
	f3	f12				6.2	6.3
	f3	f4				6.3	6.3
f8	f9	f7			6.3	6.2	
f3	f4	f5	f2	f1	6.6	6.7	

et al., 1997; and P. Bernard from the 3HAZ Corinth project, personal communication, 2017). The updates and their implication on the catalog are summarized in Table 3. We propagate the earthquake magnitude uncertainties in the estimate of seismic moment rate and earthquake rate calculations by randomly sampling the magnitude of each earthquake within their uncertainties (Stucchi et al., 2012; Albin et al., 2017) and by using two hypotheses of completeness. In Table 4 the time of completeness of the catalog for Greece calculated by the SHARE project (Stucchi et al., 2012) and the times calculated by Boiselet (2014) using the approach proposed by Stepp (1972) at the scale of the Corinth rift region are reported.

A first reality check is performed to compare the modeled and the catalog seismological moment rates. The seismological moment rate is calculated directly using the rates of earthquake of each magnitude in the catalog based on the moment

magnitude relation (Eq. 3) The seismic moment rates in models B14 and B14_hc are in good agreement with the seismic moment rate deduced from the catalog, whereas B14_s predicts a higher seismic moment rate (Fig. 4a). This comparison provides a better confidence in the models where FtF ruptures are possible than in the B14_s model. In the single-rupture model (B14_s), 90 % to nearly 100 % of the geological slip rate is converted into seismic moment rate with only less than 10 % interpreted as NMS slip rate. On the other hand, when FtF ruptures are possible (B14 and B14_hc), 25 % of the geological slip-rate budget of the faults is interpreted as NMS slip (Fig. 4b).

A second reality check consists in comparing modeled and catalog MFDs (Fig. 4c). The B14_s model does not manage to reproduce the rate of earthquakes deduced from the catalog, as it predicts a higher rate of M_w 5 earthquakes and no earthquakes of M_w 6.3 and above. On the other hand,

Table 3. Earthquakes updated in the historical and instrumental catalogs of the western Corinth rift.

Date	Type of update	Old parameters	New parameters	Special implication for the catalog
14 May 1748	Magnitude	$M_w = 6.4 \pm 0.25$	$M_w = 5.9$ (5.4–5.9)	Not in the complete period for this range of magnitudes
23 Aug 1817	Magnitude	$M_w = 6.6 \pm 0.25$	$M_w = 6.5$ (6.0–6.5)	Not associated with Aigion fault
26 Dec 1861	Location	(38.22, 22.139)	(38.28, 22.24)	
9 Sep 1888	Magnitude	$M_w = 6.3 \pm 0.4$	$M_w = 6.2$ (5.7–6.2)	Earthquake outside the WCR
25 Aug 1889	Location and magnitude	(38.25, 22.08)	(38.50, 21.33)	
3 Mar 1965	Depth and magnitude	Depth = 10 km $M_w = 6.5$	Depth = 55 km $M_w = 6.8$	Earthquake associated with the subduction zone, not with the WCR fault system
15 Jun 1995	Location and magnitude	(38.37, 22.15) $M_w = 5.8$	(38.36, 22.20) $M_w = 6.3$	
5 Nov 1997	Location	(22.28, 38.41)	(22.28, 38.36)	

we observe a good agreement of the MFDs of models B14 and B14_hc with the catalog. B14 reproduces the cumulative earthquake rate for M_w of 5.6 to 6.1 well, whereas model B14_hc reproduces the cumulative rate of earthquakes of M_w 5.0 to 5.5 better.

4.1 Slip-rate budget repartition

The way the slip-rate budget is spent between FtF ruptures, single-fault ruptures and the NMS slip ratio of the fault depends on the slip rate of the fault and the FtF ruptures the fault is involved in. Slow slipping faults that are involved in large FtF rupture scenarios (Neos Erineos or West Helike) have the majority of their slip-rate budget consumed by these large FtF ruptures (Fig. 5). On the contrary, the fast slipping faults that are involved in few FtF ruptures scenarios (1995, Pyrgos, North Eratini) spend their budget predominantly on single-fault ruptures producing a high number of small to medium magnitude earthquakes, which leads to easily exceeding the GR regional target and thus implies a higher proportion of NMS slip rate on these faults.

Models B14 and B14_hc have a similar mean 25 % ratio of NMS slip ratio (Fig. 4), but this ratio is not distributed in the same way between the different faults in each model. However, an important NMS proportion on the blind faults (Pyrgos and 1995-fault) and the offshore North Eratini fault is found for both models. There are three main factors that can induce this result: either the FtF sets are not realistic, the slip rates explored on those faults are not realistic and do not include enough complex ruptures with these faults, or there is a mechanism of NMS slip such as creep or slow slip events happening on these faults.

4.2 Earthquake rupture rate on the Aigion fault

We now choose to focus our interest on the Aigion fault. Since this fault is one of the most active faults of the WCR

and crosses the city of Aigion, it represents a major source of seismic hazard and risk for the region.

The earthquake rate modeled on the Aigion fault depends of the FtF rupture set allowed in the model (Fig. 6). The resulting MFD of the Aigion fault has the shape of a GR MFD for model B14 and B14_s, with a steeper slope for the B14_s model. In the B14_hc, the MFD computed for the Aigion fault resembles a characteristic earthquake distribution of magnitude close to M_w 6.0, similar to the maximum magnitude of earthquakes rupturing only the Aigion fault. It is worth noting that the larger magnitude earthquakes in Fig. 6b and c involve not only the Aigion fault but also the neighboring faults participating in the FtF ruptures (Fig. 5, Table 2).

Using the paleoseismological data presented by Pantosti et al. (2004), it is possible to propose rates of large magnitude earthquakes on the Aigion fault (Fig. 6). This paleorate (rate of paleoearthquakes) is subject to large uncertainties but can be used to validate or invalidate the different FtF rupture set hypothesis. In the B14_s model where faults only break on their own, the Aigion fault is not able to accommodate the paleoearthquake magnitudes. In the B14 model, where fault rupture is only allowed between faults separated by 3 km or less, the modeled earthquake rates are lower than the rates inferred from the paleoseismological study. In the B14_hc model, where FtF ruptures are allowed for faults separated by 5 km or less, the modeled earthquake rates agree well with the paleorate, within the margin of uncertainty.

According to the recent reappraisal of the historical seismicity (Albini et al., 2017), the Aigion fault is most likely the source of the 1817 M_w 6.5 (6.0–6.5) and the 1888 M_w 6.2 (5.7–6.2) earthquakes. This leads to estimates of annual rates of $M_w > 6$ earthquakes on the Aigion fault of 0.005 to 0.007 (Fig. 6) depending on the date of completeness of the catalog used (Table 4). The model B14_s does not manage to reproduce the great magnitudes earthquakes observed in the catalog. The annual rates for earthquakes $M_w > 6$ of 0.0034 and

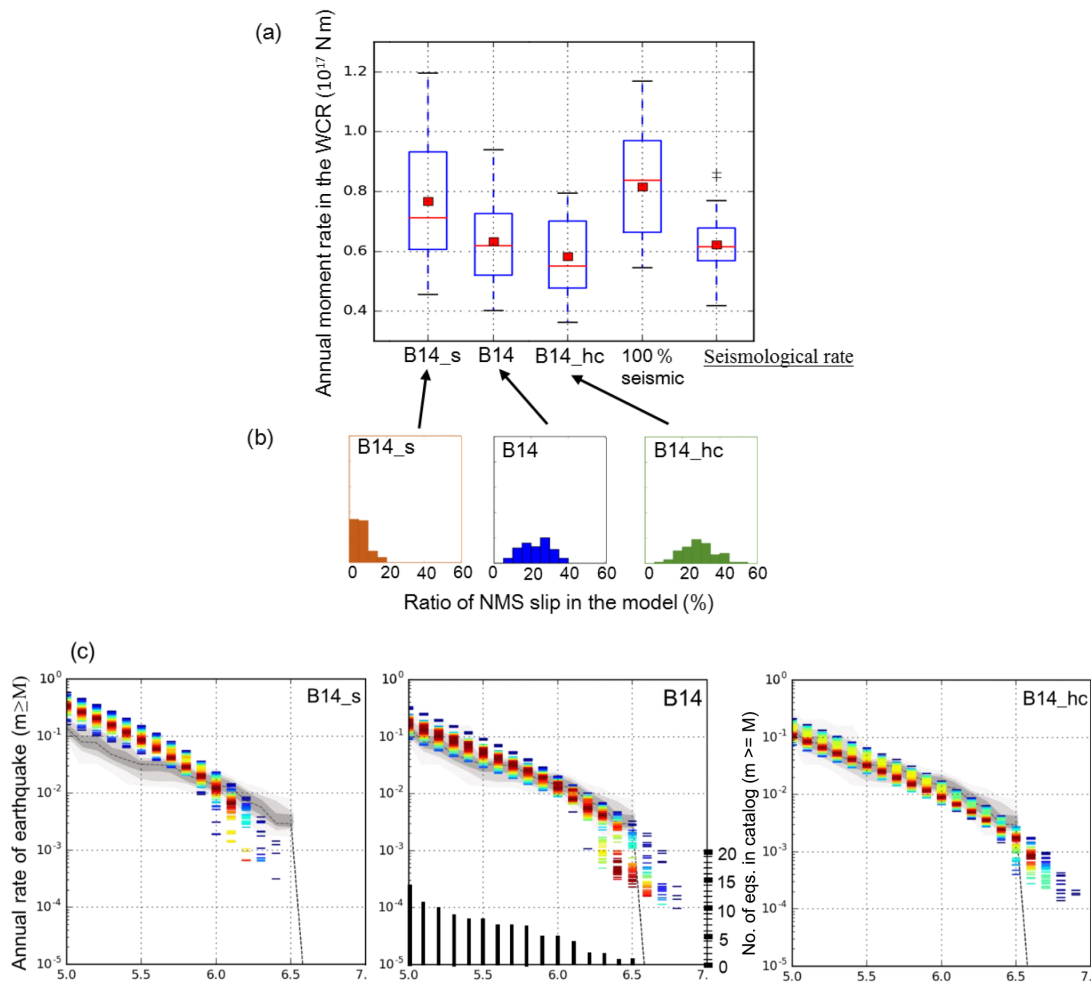


Figure 4. Modeled seismicity for the WCR fault network and comparison to the seismicity rate based on the earthquake catalog of the complete period. **(a)** Comparison between the modeled moment rates for each FtF scenario set and the seismological rate calculated from the earthquake catalog. Each box represents the SD around a mean and median value represented by a red square and a red line respectively. From left to right: the three first boxes are for each hypothesis scenario set in the logic tree, the fourth box shows the moment rate assuming 100 % of the slip rate of faults is converted into seismic moment, and the fifth box shows the moment rate calculated from the earthquake catalog. **(b)** Distribution of the ratio of NMS slip resulting from the three deformation models. **(c)** Comparison between the modeled GR MFD deduced from geological data for the whole fault system and that deduced from the WCR catalog. The models are represented as a colored density function with the red colors for the rates predicted by the higher number of models. The cumulative rates calculated from the catalog are shown as a grey density function. The cumulative number of earthquakes in the catalog is indicated by black bars in the central figure.

Table 4. Completeness hypothesis explored in this study.

SHARE project		Boiselet (2014)	
Magnitude range	Date of completeness	Magnitude range	Date of completeness
4.1–5.1	1970	5.0–5.4	1958
5.1–5.7	1900	5.5–6.0	1904
5.7–6.5	1650	6.0–6.5	1725
≥ 6.5	1450	6.5–7.0	1725

0.0051 predicted by models B14 and B14_hc respectively are statistically compatible with the rate inferred from the catalog.

4.3 Weighting the logic tree branches

The comparison with independent local data allows suggesting weights for the different FtF rupture set hypothesis (Fig. 3) for hazard calculation.

The B14_s branch, where faults can only rupture independently, fits neither the annual moment rate nor the earthquakes rate of the catalog of the region, nor the pale-

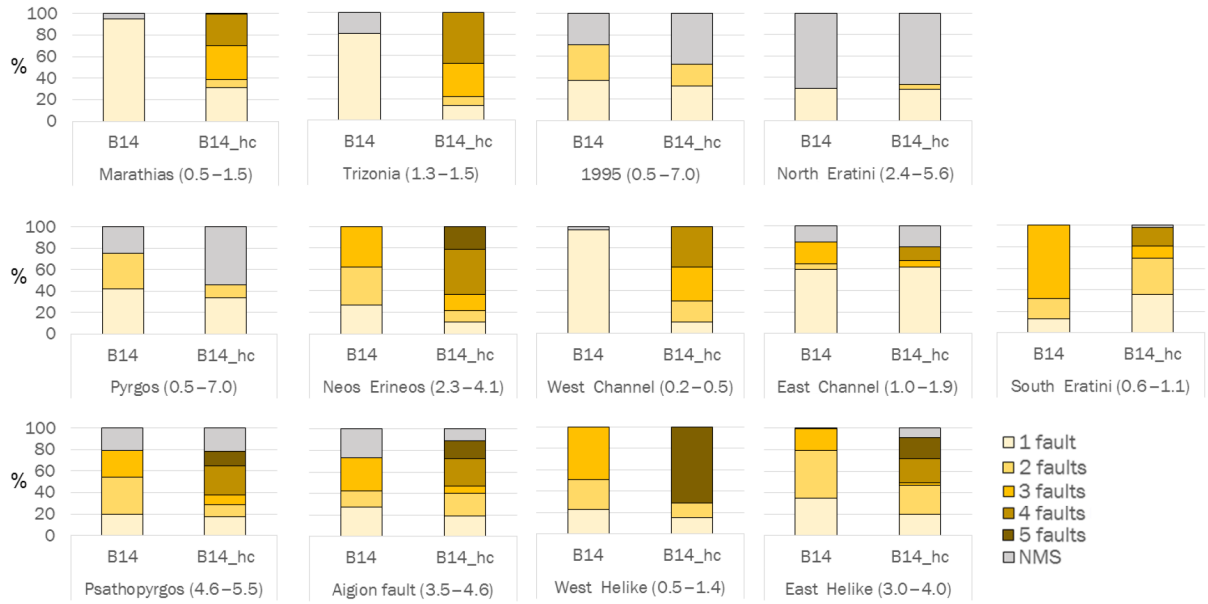


Figure 5. Visualization of the way the slip-rate budget of each fault is spent. The color depends on the number of faults involved in the FtF rupture. Minimum and maximum values of the slip rate on each fault is shown in brackets in mm yr^{-1} .

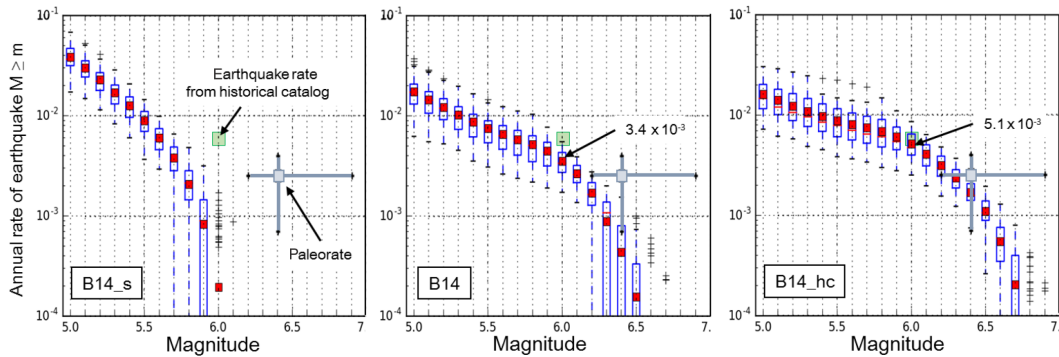


Figure 6. Rate of earthquakes occurring on the Aigion fault for each FtF rupture set. Variability resulting from the exploration of the logic tree is illustrated by the blue boxes. The annual rates of $M_w \geq 6$ earthquakes on Aigion fault are indicated for the B14 and B14_hc models. The grey square represents the paleorate (rate of paleoearthquakes) interpreted from Pantosti et al. (2004) with its uncertainties. The green box represents the rate of earthquakes greater than M_w 6 on the Aigion fault inferred from the historical catalog.

oearthquake magnitude on the Aigion fault (Figs. 4 and 6). We conclude that this branch should not be used for a hazard calculation in the western Corinth rift.

Between the two branches where FtF ruptures are possible, B14_hc manages to match the earthquake rates of the catalog for a range of magnitudes where statistics are stronger (14 earthquakes M_w 5.0 and above) compared to the B14 model (matching only 4 earthquakes of M_w 6.0 and above in the catalog) (Fig. 4). The B14_hc branch matches the Aigion fault earthquake rates inferred from the paleoseismology and the historical catalog better than the B14 model (Fig. 6). The agreement with the earthquake rate in the regional catalog and the better reproduction of the Aigion fault data of the B14_hc model lead us to propose a stronger weight for this

model compared to the B14 model for the estimate of hazard for Aigion city.

5 Conclusion and perspectives

The methodology presented in this study uses a system-level approach rather than an individual-fault-level approach to estimate the rate of earthquakes on faults based on the geological data collected for each fault and allowing FtF rupture in the hazard model as an aleatory uncertainty. The application of the methodology to the WCR fault network shows that, in order to match a GR MFD for the whole fault system, part of the fault slip rates have to be spent as a non-main-shock

slip. The way the fault slip rate is partitioned among single or FtF ruptures and the resulting shape of the individual fault MFD depends on the location of the fault in the network and the fault's characteristics. The earthquake rates modeled using the geological data on the faults are compared with the local earthquake catalog and paleoseismic data in order to weight the different epistemic hypothesis. In the case of the WCR, and for future seismic hazard assessment for the city of Aigion, these reality checks suggest attributing a stronger weight to the branch allowing FtF ruptures between faults with the 5 km distance criteria (B14_{hc}), a lower weight to that based on the 3 km criteria (B14) and a null weight to the model where only single-fault ruptures are allowed (B14_s).

The fault network used for the application concerns only the western part of the Corinth rift fault network. Integrating the rest of the network in the model could modify the final outcome and should be explored in future developments.

More reality checks will be implemented in the future in order to weight the different uncertainties of the logic tree based on the results of the ongoing microseismicity studies in the WCR (i.e., use the possible presence of repeater earthquakes on the Aigion fault to validate NMS slip ratio, Duverger et al., 2015).

The methodology presented in this article can be applied to other fault systems in different tectonic environments. In order to implement this approach, the geometries and slip rates of the faults have to be known within uncertainties, FtF rupture scenarios sets have to be defined, and the shape of the regional MFD needs to be assumed or inferred from the regional catalog. If for the WCR the GR distribution seems suitable, it has been shown that a Youngs and Coppersmith distribution (Youngs and Coppersmith, 1985) can be more appropriate for other fault systems (e.g., by Hecker et al., 2013). Given the flexibility of our methodology any other target MFD can be easily implemented in the methodology.

The earthquake rupture rate calculated using this methodology is very sensitive to the choice of possible FtF rupture scenarios. The comparison with the earthquake catalog and local data, such as the paleoseismological data, can provide guidance to the strength of each hypothesis. Nevertheless, the choice based on distance between faults should be supported by more physical approaches in the future such as Coulomb stress modeling (Toda et al., 2005) and/or dynamic modeling of ruptures (Durand et al., 2017).

The methodology at this stage does not consider the background seismicity. The example of the dense WCR fault system allowed setting aside this issue in order to test our methodology and focus on the FtF ruptures. Future developments of the methodology need to allow part of the modeled seismicity rate to be in the background. If performing hazard calculation for a region wider than the fault system itself, it is necessary to combine the models built with this methodology with classical area sources.

Code and data availability. The details of the fault data used in this study are provided in Boiselet (2014). The code used in this study is still under development but can be shared on demand.

The Supplement related to this article is available online at <https://doi.org/10.5194/nhess-17-1857-2017-supplement>.

Competing interests. The authors declare that they have no conflict of interest.

Special issue statement. This article is part of the special issue “Linking faults to seismic hazard assessment in Europe”. It is not associated with a conference.

Acknowledgement. Many thanks to Kuo-Fong Ma and an anonymous referee as well as guest editor Laura Peruzza for their valuable questions and comments that helped in improving the quality of this article to a great extent. This work was jointly funded by IRSN and ENS (LS 20201/CNRS 138701) and the Axa Research Fund (Axa–JRI 2016).

Edited by: Laura Peruzza

Reviewed by: Kuo-Fong Ma and one anonymous referee

References

- Albini, P., Rovida, A., Scotti, O., and Lyon-Caen, H.: Large eighteenth–nineteenth century earthquakes in Western Gulf of Corinth with reappraised size and location, *B. Seismol. Soc. Am.*, 107, 1663–1687, <https://doi.org/10.1785/0120160181>, 2017.
- Armijo, R., Meyer, B., King, G., Rigo, A., and Papanastassiou, D.: Quaternary evolution of the Corinth Rift and its implications for the Late Cenozoic evolution of the Aegean, *Geophys. J. Int.*, 126, 11–53, 1996.
- Avallone, A., Briole, P., Agatza-Balodimou, A., Billiris, H., Charade, O., Mitsakaki, C., Nercessian, A., Papazissi, K., Paradisis, D., and Veis, G.: Analysis of eleven years of deformation measured by GPS in the Corinth Rift Laboratory area, *CR Geosci.*, 336, 301–311, 2004.
- Baker, C., Hatzfeld, D., Lyon-Caen, H., Papadimitriou, E., and Rigo, A.: Earthquake mechanisms of the Adriatic Sea and western Greece, *Geophys. J. Int.*, 131, 559–594, 1997.
- Bernard, P., Briole, P., Meyer, B., Lyon-Caen, H., Gomez, J.-M., Tiberi, C., Berge, C., Cattin, R., Hatzfeld, D., Lachet, C., Lebrun, B., Deschamps, A., Courboux, F., Larroque, C., Rigo, A., Massonnet, D., Papadimitriou, P., Kassaras, J., Diagourtas, D., Makropoulos, K., Veis, G., Papazisi, E., Mitsakaki, C., Karakostas, V., Papadimitriou, E., Papanastassiou, D., Chouliaras, G., and Stavrakakis, G.: The Ms = 6.2, June 15, 1995 Aigion earthquake (Greece): evidence for low angle normal faulting in the Corinth rift, *J. Seismol.*, 1, 131–150, 1997.

- Bernard, P., Lyon-Caen, H., Briole, P., Deschamps, A., Boudin, F., Makropoulos, K., Papadimitriou, P., Lemeille, F., Patau, G., and Billiris, H.: Seismicity, deformation and seismic hazard in the western rift of Corinth: new insights from the Corinth Rift Laboratory (CRL), *Tectonophysics*, 426, 7–30, 2006.
- Boiselet, A.: Cycle sismique et aléa sismique d'un réseau de failles actives: le cas du rift de Corinthe (Grèce), PhD Thesis, available at: <https://hal.archives-ouvertes.fr/tel-01456400> (last access: January 2017), 2014.
- Cheloni, D., Giuliani, R., D'Anastasio, E., Atzori, S., Walters, R. J., Bonci, L., D'Agostino, N., Mattone, M., Calcaterra, S., Gambino, P., Deninno, F., Maseroli, R., and Stefanelli, G.: Coseismic and post-seismic slip of the 2009 L'Aquila (central Italy) MW 6.3 earthquake and implications for seismic potential along the Campotosto fault from joint inversion of high-precision levelling, InSAR and GPS data, *Tectonophysics*, 622, 168–185, <https://doi.org/10.1016/j.tecto.2014.03.009>, 2014.
- Cornell, C. A.: Engineering seismic risk analysis, *B. Seismol. Soc. Am.*, 58, 1583–1606, 1968.
- Durand, V., Hok, S., Boiselet, A., Bernard, P., and Scotti, O.: Dynamic rupture simulations on a fault network in the Corinth Rift, *Geophys. J. Int.*, 208, 1611–1622, <https://doi.org/10.1093/gji/ggw466>, 2017.
- Duverger, C., Godano, M., Bernard, P., Lyon-Caen, H., and Lambotte, S.: The 2003–2004 seismic swarm in the western Corinth rift: evidence for a multiscale pore pressure diffusion process along a permeable fault system, *Geophys. Res. Lett.*, 42, 7374–7382, <https://doi.org/10.1002/2015GL065298>, 2015.
- Fault2SHA: Workshop Proceedings, available at: <https://drive.google.com/file/d/0B60wsWaPpDL4YURqRW40TmJMvKU/view> (last access: July 2017), 2017.
- Field, E. H., Arrowsmith, R. J., Biasi, G. P., Bird, P., Dawson, T. E., Felzer, K. R., Jackson, D. D., Johnson, K. M., Jordan, T. H., Madden, C., Michael, A. J., Milner, K. R., Page, M. T., Parsons, T., Powers, P. M., Shaw, B. E., Thatcher, W. R., Weldon, R. J., and Zeng, Y.: Uniform California Earthquake Rupture Forecast, version 3 (UCERF3) The time-independent model, *B. Seismol. Soc. Am.*, 104, 1122–1180, <https://doi.org/10.1785/0120130164>, 2014.
- Ford, M., Rohais, S., Williams, E. A., Bourlange, S., Jousset, D., Backert, N., and Malatre, F.: Tectono-sedimentary evolution of the Western Corinth Rift (Central Greece), *Bassin Res.*, 25, 3–25, <https://doi.org/10.1111/j.1365-2117.2012.00550.x>, 2013.
- Giannopoulos, D., Rivet, D., Sokos, E., Deschamps, A., Mordret, A., Lyon-Caen, H., Bernard, P., Paraskevopoulos, P., and Tselentis, G.-A.: Ambient noise tomography of the western Corinth Rift, Greece, *Geophys. J. Int.*, 211, 284–299, <https://doi.org/10.1093/gji/ggx298>, 2017.
- Grünthal, G., Wahlström, R., and Stromeyer, D.: The SHARE European Earthquake Catalogue (SHEEC) for the time period 1900–2006 and its comparison to EMEC, *J. Seismol.*, 17, 1339–1344, <https://doi.org/10.1007/s10950-013-9379-y>, 2013.
- Gülerce, Z. and Ocak, S.: Probabilistic seismic hazard assessment of Eastern Marmara Region, *B. Earthq. Eng.*, 11, 1259–1277, 2013.
- Gutenberg, B. and Richter, C.: Frequency of earthquakes in California, *B. Seismol. Soc. Am.*, 34, 185–188, 1944.
- Hanks, T. C. and Kanamori, H.: A moment magnitude scale, *J. Geophys. Res.-Sol. Ea.*, 84, 2348–2350, <https://doi.org/10.1029/JB084iB05p02348>, 1979.
- Hecker, S., Abrahamson, N. A., and Wooddell, K. E.: Variability of displacement at a point: implications for earthquake-size distribution and rupture hazard on faults, *B. Seismol. Soc. Am.*, 103, 651–674, <https://doi.org/10.1785/0120120159>, 2013.
- Jackson, J., Gagnepain, J., Houseman, G., King, G., Papadimitriou, P., Soufleris, C., and Virieux, J.: Seismicity, normal faulting, and the geomorphological development of the Gulf of Corinth (Greece): the Corinth earthquakes of February and March 1981, *Earth Planet. Sc. Lett.*, 57, 377–397, 1982.
- Lambotte, S., Lyon-Caen, H., Bernard, P., Deschamps, A., Patau, G., Necessian, A., Pacchiani, F., Bourouis, S., Drilleau, M., and Adamova, P.: Reassessment of the rifting process in the Western Corinth Rift from relocated seismicity, *Geophys. J. Int.*, 197, 1822–1844, <https://doi.org/10.1093/gji/ggu096>, 2014.
- Leonard, M.: Earthquake fault scaling: self-consistent relating of rupture length, width, average displacement, and moment release, *B. Seismol. Soc. Am.*, 100, 1971–1988, <https://doi.org/10.1785/0120090189>, 2010.
- Lienkaemper, J., DeLong, S., Domrose, C., and Rosa, C.: Afterslip behavior following the M6.0, 2014 South Napa earthquake with implications for afterslip forecasting on other seismogenic faults, *Seismol. Res. Lett.*, 87, 609–619, <https://doi.org/10.1785/0220150262>, 2016.
- Lyon-Caen, H., Papadimitriou, P., Deschamps, A., Bernard, P., Makropoulos, K., Pacchiani, F., and Patau, G.: First results of the CRLN seismic network in the western Corinth Rift: evidence for old-fault reactivation, *CR Geosci.*, 336, 343–351, 2004.
- Makropoulos, K., Kaviris, G., and Kouskouna, V.: An updated and extended earthquake catalogue for Greece and adjacent areas since 1900, *Nat. Hazards Earth Syst. Sci.*, 12, 1425–1430, <https://doi.org/10.5194/nhess-12-1425-2012>, 2012.
- McGuire, R. K.: FORTRAN Computer Program for Seismic Risk Analysis Open-File Report 76-67, US Geological Survey, 1976.
- Pantosti, D., De Martini, P. M., Koukouvelas, I., Stamatopoulos, L., Palyvos, N., Pucci, S., Lameille, F., and Pavlides, S.: Palaeoseismological investigations of the Aigion Fault (Gulf of Corinth, Greece), *CR Geosci.*, 336, 335–342, 2004.
- Papazachos, B. C. and Papazachou, C.: The earthquakes of Greece, *Ziti Publ. Co.*, Thessaloniki, Greece, 286 pp., 2003 (in Greek).
- Schorlemmer, D., Wiemer, S., and Wyss, M.: Variations in earthquake-size distribution across different stress regimes, *Nature*, 437, 539–542, 2005.
- Sokos, E., Zahradník, J., Kiratzi, A., Janský, J., Gallovič, F., Novotny, O., Kostecký, J., Serpetsidaki, A., and Tselentis, G.-A.: The January 2010 Efpalio earthquake sequence in the western Corinth Gulf (Greece), *Tectonophysics*, 530–531, 299–309, <https://doi.org/10.1016/j.tecto.2012.01.005>, 2012.
- Stepp, J. C.: Analysis of Completeness of the Earthquake Sample in the Puget Sound Area and its Effect on Statistical Estimates of Earthquake Hazard, *Proc. of the 1st Int. Conf. on Microzonation, Seattle*, Vol. 2, 897–910, 1972.
- Stucchi, M., Rovida, A., Gomez Capera, A. A., Alexandre, P., Camelbeeck, T., Demircioglu, M. B., Gasperini, P., Kouskouna, V., Musson, R. M. W., Radulian, M., Sesetyan, K., Vilanova, S., Baumont, D., Bungum, H., Fäh, D., Lenhardt, W., Makropoulos, K., Martinez, J. M., Solares, Scotti, O., Živčić, M., Albini, P., Batllo, J., Papaioannou, C., Tatevossian, R., Locati, M., Meletti, C., Viganò, D., and Giardini, D.: The SHARE European Earthquake Catalogue (SHEEC) 1000–1899, *J. Seis-*

- mol., 17, 523–544, <https://doi.org/10.1007/s10950-012-9335-2>, 2012.
- Toda, S., Stein, R. S., Richards-Dinger, K., and Bozkurt, S. B.: Forecasting the evolution of seismicity in southern California: animations built on earthquake stress transfer, *J. Geophys. Res.-Sol. Ea.*, 110, B05S16, <https://doi.org/10.1029/2004JB003415>, 2005.
- Toro, G. R., Abrahamson, N. A., and Schneider, J. F.: Model of strong ground motions from earthquakes in central and eastern North America: best estimates and uncertainties, *Seismol. Res. Lett.*, 68, 41–57, 1997.
- Wang, Y. J., Lee, Y. T., Chan, C. H., and Ma, K. F.: An Investigation of the Reliability of the Taiwan Earthquake Model PSHA2015, *Seismol. Res. Lett.*, 87, 1287–1298, <https://doi.org/10.1785/0220160085>, 2016.
- Wells, D. L. and Coppersmith, K. J.: New empirical relationships among magnitude, rupture length, rupture width, rupture area, and surface displacement, *B. Seismol. Soc. Am.*, 84, 974–1002, 1994.
- Wesnowsky, S. G.: Earthquakes, Quaternary faults, and seismic hazard in California, *J. Geophys. Res.-Sol. Ea.*, 91, 12587–12631, 1986.
- Woessner, J., Laurentiu, D., Giardini, D., Crowley, H., Cotton, F., Grünthal, G., Valensise, V., Arvidsson, R., Basili, R., Betül Demircioglu, M., Hiemer, S., Meletti, C., Musson, R. W., Rovida, A. N., Sesetyan, K., and Stucchi, M.: The SHARE Consortium: the 2013 European Seismic Hazard Model: key components and results, *B. Earthq. Eng.*, 13, 3553, <https://doi.org/10.1007/s10518-015-9795-1>, 2015.
- Working Group on California Earthquake Probabilities: Earthquake Probabilities in the San Francisco Bay Region: 2002–2031, USGS Open-File Report 03-214, 2003.
- Yazdani, A., Nicknam, A., Eftekhari, S. N., and Dadras, E. Y.: Sensitivity of near-fault PSHA results to input variables based on information theory, *B. Seismol. Soc. Am.*, 106, 1858–1866, <https://doi.org/10.1785/0120160006>, 2016.
- Youngs, R. R. and Coppersmith, K. J.: Implications of fault slip rates and earthquake recurrence models to probabilistic seismic hazard estimates, *B. Seismol. Soc. Am.*, 75, 939–964, 1985.