



**HAL**  
open science

## AL-YAMĀMA: GEOMAGNETIC MAPPING

Bruno Gavazzi, Rozan Alkhatib-Alkontar, Marc Munschy

► **To cite this version:**

Bruno Gavazzi, Rozan Alkhatib-Alkontar, Marc Munschy. AL-YAMĀMA: GEOMAGNETIC MAPPING. Jeremie Schiettecatte, Abdulaziz Alghazzi. AL-KHARJ I REPORT ON TWO EXCAVATION SEASONS IN THE OASIS OF AL-KHARJ • 2011-2012 SAUDI ARABIA, 40, 2016, Archaeological Refereed studies, 978-603-8136-34-8. hal-01625146

**HAL Id: hal-01625146**

**<https://hal.science/hal-01625146>**

Submitted on 30 Oct 2017

**HAL** is a multi-disciplinary open access archive for the deposit and dissemination of scientific research documents, whether they are published or not. The documents may come from teaching and research institutions in France or abroad, or from public or private research centers.

L'archive ouverte pluridisciplinaire **HAL**, est destinée au dépôt et à la diffusion de documents scientifiques de niveau recherche, publiés ou non, émanant des établissements d'enseignement et de recherche français ou étrangers, des laboratoires publics ou privés.



برنامج خادم الحرمين الشريفين للعناية بالتراث الحضاري للمملكة



الهيئة العامة للسياحة والتراث الوطني

Saudi Commission for Tourism & National Heritage

scth.gov.sa

# AL-KHARJ I

REPORT ON TWO EXCAVATION SEASONS  
IN THE OASIS OF AL-KHARJ • 2011–2012  
SAUDI ARABIA

Jérémie Schiettecatte

Abdulaziz Alghazzi

Series of Archaeological Refereed studies No.40





# **AL-KHARJ I**

**REPORT ON TWO EXCAVATION SEASONS  
IN THE OASIS OF AL-KHARJ • 2011–2012  
SAUDI ARABIA**

**Jérémie Schiettecatte  
Abdulaziz Alghazzi**

**Riyadh  
1437 - 2016**

**C** Saudi Commission for Tourism and National Heritage, 2016  
**King Fahd National Library Cataloging-In-Publication Data**

Schiettecatte, Jeremie

Report on two Excavation Seasons in the Oasis of  
Al-Kharj 20112012- Saudi Arabia. / Jeremie

Schiettecatte; Abdulaziz Al-Ghazzi.- Riyadh, 2016

388 p; 29.7x21 cm - (Series of Archaeological Refereed studies No 40)

ISBN: 978 - 603 -8 136 - 34 - 8

1- Oasis- Saudi Arabia I- Abdulaziz  
Al-Ghazzi (co. author) II- Title

333.73609531 dc 1438 / 221

L.D. no. 1438 / 221

ISBN: 978 - 603 - 8136 - 34 - 8

# Foreword

Antiquity is the most distinctive component of a country's national and cultural heritage, as well as a scientific and cultural treasure, an economic source and a cornerstone of the tourism sector.

SCTH, represented by the Antiquity and Museums Sector, offers an opportunity to scholars and experts to publish their research work, academic dissertations and studies with the goal of protecting, raising awareness and promoting Saudi Arabian antiquities through all available means, including publication and authorship.

This book is the end product of implementing the policy of the Antiquity and Museum Sector, in promotion of the objectives of the custodian of the two holy mosques program for the kingdom's cultural care, By making available scientific publications that highlight and boost the public interest and awareness about the Saudi Arabian culture, the cradle of Islam, we are able to bridge the cultural links and communication across the continents that have existed since ancient time.

SCTH president  
Sultan Bin Salman Bin Abdulaziz





# Glimpse

As part of the action plan for the Antiquities and Museums Sector of the Saudi Commission for Tourism and National Heritage (SCTH) has given special attention to scientific research and developed different publication venues in which results of ongoing discoveries, researches and archaeological investigations are presented so as to promote and raise public awareness and knowledge on all archaeological sites and research activities in the Kingdom, to enrich libraries with specialized publications and to provide students and researchers with valuable resources on Saudi cultural heritage.

In this regard, Antiquities and Museums Sector has released a series of publications - archaeological studies and introductory books to raise awareness among the general audience about the importance of archaeology and their role in preserving them. Further, several academic dissertations, periodicals and scientific magazines have been published.

Furthermore, SCTH is keen to provide various gateways for publications to make them accessible to the public such as CDs, electronic media and the website.

Vice-President General Supervisor on the custodian of the two holy mosques program for the kingdom's cultural care  
Prof. Ali bin Ibrahim Al Ghabban



## TABLE OF CONTENTS

■ INTRODUCTION	23
Two field seasons in the oasis of al-Kharj	23
Funding	23
Archaeology in al-Kharj: past research and present issues	24
Programme of the 2011 and 2012 seasons	26
Recording system	28
The team	29
<b>THE OASIS OF AL-KHARJ</b>	<b>33</b>
■ GEOGRAPHIC AND GEOMORPHOLOGICAL CONTEXTS	35
Geographic situation	35
Geological background	35
Topography	36
Methodology	37
Holocene dynamics	38
Discussion on the links between geomorphological and palaeo-environmental changes and human occupation	40
Conclusion	41
■ THE PREHISTORY OF THE REGION OF AL-KHARJ	51
The significance of al-Kharj region within the Arabian context	51
Methodology	52
Geological analysis of the micro-regions	53
Results	57
AK-22 as a reference site for the Middle Palaeolithic in Central Arabia	63
Conclusion: future work	64
■ PROTOHISTORIC AND HISTORIC SURVEY OF THE REGION OF AL-KHARJ	81
Bronze Age and Iron Age necropolises	83
Late Pre-Islamic and Islamic sites	86
■ NOUVEAUX JALONS POUR UNE GÉOGRAPHIE HISTORIQUE DE LA YAMĀMA : LES TOPONYMES MENTIONNÉS DANS LES INSCRIPTIONS SUDARABIQUES	109
Les toponymes	109
Les textes	120

<b>THE SITE OF AL-YAMĀMA</b>	<b>129</b>
■ <b>AL-YAMĀMA: THE MAP OF THE SITE</b>	<b>131</b>
The topographic frame	131
Setting up a grid	131
Characterizing the relief of the site	131
Mapping the structures on the ground ( <b>fig. 85</b> )	132
Setting up the limits of the excavated areas	133
Mapping the excavated structures	134
■ <b>AL-YAMĀMA: GEOMAGNETIC MAPPING</b>	<b>141</b>
Introduction	141
Method	142
Results	143
Conclusion	144
■ <b>AL-YAMĀMA (AREA N6): SOUNDING 1</b>	<b>153</b>
Location	153
Occupation sequence	154
Conclusion	159
■ <b>AL-YAMĀMA (AREA N6): BUILDING 1 – THE GREAT MOSQUE</b>	<b>175</b>
Description of the architecture	175
Six stages of occupation in the mosque	178
Comparisons and discussion	181
Conclusion	183
■ <b>AL-YAMĀMA (AREA N6): THE POTTERY ASSEMBLAGE</b>	<b>201</b>
Phase 1	204
Phase 2	206
Phase 3	208
Phase 4	210
Surface sampling and provisional reconstruction of the urban layout	211
Concluding remarks	214
■ <b>AL-YAMĀMA (AREA O7): BUILDING 2/SOUNDING 2 – A DWELLING</b>	<b>249</b>
Location	249
Architectural description	249
Stratigraphy	250
Artefacts	251
Discussion	252

■ THE FAUNAL REMAINS OF AL-YAMĀMA: FROM CAMELS TO SPINY-TAILED LIZARDS	259
Bone location	259
Methodology	261
Results: species present	263
Discussion	281
<b>APPENDICES</b>	<b>295</b>
1. Database of archaeological sites of al-Kharj area	297
2. Database of photographs taken during survey and excavation	298
3. Database of stratigraphic units	299
4. Database of archaeological structures	300
5. Database of archaeological artefacts	301
6. Database of pottery	302
7. Database of samples	303
8. Table of the stratigraphic units	304
9. Table of the structures	318
10. Table of the artefacts	340
11. Team members	349
<b>LIST OF BIBLIOGRAPHICAL REFERENCES</b>	<b>353</b>



## CHAPTER 6

### AL-YAMĀMA: GEOMAGNETIC MAPPING

Bruno GAVAZZI – *PhD student at the Institut de Physique du Globe, UMR 7516, Strasbourg and at ARCHIMEDE, UMR 7044, Strasbourg.*

Rozan AL-KHATIB AL-KONTAR – *PhD student at the Institut de Physique du Globe, UMR 7516, Strasbourg.*

Marc MUNSCHY – *Professor at the University of Strasbourg, Institut de Physique du Globe, UMR 7516, Strasbourg.*

#### Introduction

Archaeologists often deal with buried objects and structures over large surfaces. Most of the time, extensive excavations of a whole site cannot be conducted as they are highly time and labour consuming. Thus, only carefully selected parts of a site are actually excavated.

An elegant solution to localize and investigate a site at a greater scale is to use sub-surface geophysics. This discipline consists in the study of the ground from a few centimetres to hundreds of metres below the surface using non-invasive techniques. Six different methods are available. They are separated into two groups: active and passive. Seismic, electric, electro-magnetic and geo-radar methods are active, i.e. they are defined as the study of the reaction of the media to stimuli (respectively acoustic waves, DC current, low frequency AC current and high frequency AC current). Gravimetry and geomagnetism are passive. They deal with the study of disturbances in earth fields (respectively gravity and magnetic fields), i.e. inherent capacities of the medium, hence no stimuli are required for the measurements.

According to Linford (LINFORD 2006: 2205–2257), geomagnetism is probably the most widely used geophysical technique for archaeological purposes for two main reasons:

- the rapidity of measurement allows extensive surfaces to be covered with a high density of data within a relatively short time;
- as most of the man-made traces show a contrast of magnetization with their surrounding media, even subtle archaeological features might be identified.

At al-Yamāma, geomagnetic mapping was chosen for the same reasons. The aim was to investigate the whole site to determine the different areas of possible remains. Moreover, we used an original device based on fluxgate vectorial magnetometers, which are usually used in space and airborne studies (PRIMDAHL 1979: 241–253; NABIGHIAN *et al.* 2005: 33–61), in order to improve on the rapidity and density of data acquisition normally obtained with the commercial gradiometers developed for archaeology.<sup>30</sup>

---

30 Comparison of the commercial gradiometers for archaeology: BARTINGTON & CHAPMAN 2004: 19–34.

## Method

### PRINCIPLE AND DEVICES

---

The earth's magnetic field is vectorial, i.e. it is defined for every point in space by both a direction and an intensity measured in Tesla (T). Almost 99% of the field is relatively stable and comes from deep internal sources: core, mantle, crust (CAMPBELL 2003; ROY 2010). Around 1% comes from external sources, mainly from the interaction between the earth and the sun, and is highly time-dependant (COURTILLOT & LE MOUËL 1988: 389–476; THÉBAULT *et al.* 2010: 95–127). Nevertheless, local features of natural or man-made origin might generate subtle disturbances in the earth's magnetic field: the magnetic anomalies. The principle of the method is to measure and map these anomalies and to identify the ones created by humans.

In order to apply the technique, two devices were used on the site: the 'backpack' and the 'sledge'. Both work on the same principle. The difference lies in the speed and precision of the measurements.

The Backpack (**fig. 90**) is composed of the following parts:

- Four magnetometers (Bartington MG-03MC70) are fixed on an aluminium stick 50 cm apart from each other. The structure is attached to a backpack in such a fashion that the sensors lie horizontally in front of the operator, one meter above the ground.
- A GPS antenna (Trimble 5800) is fixed to the top of the backpack.
- An electronic digitizer is attached to the backpack. It acquires the magnetic and GPS data (respectively at 30 and 1 measurements per second) and stores them on a SD card. It also has a remote control to start and stop the measurements as well as to record points of interest. The digitizer is linked to a mini-PC, itself linked to a head mounted display (HMD) on which magnetic and positioning data are shown in real-time. The remote control allows the operator to interact directly with the computer without removing the backpack.

With such a configuration almost continuous and geo-referenced magnetic profiles (30 samples per second) are recorded every 50 cm, one meter above the ground.

The Sledge (**fig. 91**) uses most of the Backpack components with the following differences:

- The magnetometers are fixed at the front part of a sledge, 10 cm apart from each other and a few centimetres above the ground.
- The GPS is attached at the back, 90 cm away from the captors.
- The digitizer is fixed in the middle of the sledge.
- The mini-PC and HMD are not used.

With this configuration the magnetic profiles are acquired every 10 cm, at 10 cm above the ground.

In both cases the device is powered by a 12 V, 7 Ah lead sealed battery placed within or on top of the digitizer.

### FASHION OF MEASUREMENT AND DATA PROCESSING

---

The sessions of measurements always follow the same routine with both devices. The difference is the number of operators required for the data acquisition: a single person with the Backpack, two with the Sledge.

#### ■ Calibration

Fluxgate magnetometers are not absolute but relative devices. Each sensor shows its own errors in offset, sensitivity and angle. In order to get the same signal from each of the four



captors they must be calibrated at the beginning and end of each session of measurements: the device is rotated in all directions above a fixed point where it is assumed that the magnetic field is constant and therefore that the measured disturbances are only due to the device itself. Corrections can then be calculated by different mathematical methods. The approach for the calibration of the magnetometers of the Ørsted satellite (OLSEN *et al.* 2003: 11–18) was selected because of its proven efficiency in the detection of unexploded ordnance (UXO) with the same device (MUNSCHY *et al.* 2007: 168–183).

#### ■ *Static measurements*

On the site the effects of the change of temperature on the sensors and the diurnal variations of the magnetic field due to external sources are both sources of time-dependant variations. At the scale of a session of measurement (60 to 90 minutes) both are assumed to create a linear drift, which can be easily corrected by measuring the differences over a same point (the static point) at the beginning and end of each mapping session.

#### ■ *Mapping*

The device is carried along pre-set routes (every 2 m for the Backpack, every 50 cm for the Sledge) in a back and forth fashion. The beginning and end of each route is recorded using the remote. Thus magnetic profiles are acquired every 50 or 10 cm over the whole area of investigation.

#### ■ *Data processing*

Once the data are calibrated and the time-dependant variations corrected, the magnetic anomalies are calculated along each profile by subtraction between the measured total field and a modelled regional field. By interpolation between each profile a grid of the magnetic anomalies of the area is generated and displayed for interpretation.

## Results

During the two field campaigns, around 180 km of profiles were measured with the Backpack. This corresponds to an area of approximately 30 hectares divided into four different zones (**fig. 92**):

- 1/ Three quarters of the site within the fences;
- 2/ A test in the cemetery outside the western wall;
- 3/ A test in the south-west, close to a camel enclosure, where some fossilized agricultural structures are still visible on the surface.
- 4/ A fourth zone of 1,875 m<sup>2</sup> was covered with the Sledge.

### THE BACKPACK

---

#### ■ *Zone 1*

In the first zone numerous elements can be observed (**fig. 93**). The anomalies on the edges are most likely due to the structures closing the area: a wall on the west and a metallic fence elsewhere. These differences of sources explain the differences of the shapes of the anomalies. In addition, the massive anomalies in the north are most likely due to the buildings across the access road.

Apart from these, two other main types of anomalies can be identified: bodies of very low frequency which are probably linked to the underlying geology, and higher frequency anomalies forming lines. Some of the latter are due to remains of walls still visible on the

surface. Because of the similarities of the signal it may be assumed that the other lines correspond to similar structures which have been completely buried. In this way the magnetic map can be used as a tool to fill the gaps between different surface elements as well as finding new ones.

**Figure 94** displays both the walls visible on the surface and the magnetic lines. The latter are less precise than the former but allow the completion of some walls, especially in the northern part. In the south and the west, the anomalies reveal unexpected structures. However, the eastern part seems to be empty of any remains, apart from one long east–west structure. Only a few more structures are present in the central-western part. Thus it seems that the area is composed of two main zones with a high density of remains: one in the north and one in the south. Nevertheless the south-western quarter still needs to be investigated to understand the full extent of the south area.

Another type of anomaly can also be noted: small dipolar anomalies (**figs. 97–98**). They could be linked to metallic waste (barrels, car pieces, etc.) as well as ancient kilns for ceramics or smith work. Further investigation is required before drawing any conclusions.

#### ■ Zone 2

On the second zone (**fig. 95**) low frequency anomalies can be observed. They are most likely due to underlying geological features except for the square anomaly in the south (within the black circle). Such shapes are often related to human activities. Further analyses (excavation or other geophysical investigations) would be required to confirm or invalidate a human origin. The same reflection can be applied to the line pointed out by the arrows. Given these facts it seems that the area is worth further investigations.

#### ■ Zone 3

On the third zone (**fig. 96**) the only noticeable element is an east–west alignment showing an anomaly of more than 1,000 nT. This could easily be caused by the metal water-pipe whose opening is visible a few hundred metres to the east. From an archaeological point of view, the lack of other structures would indicate that further measurements do not seem relevant.

### THE SLEDGE

---

The measurements with the Sledge (**fig. 97**) were carried out above a zone where a concentration of misfired and wasted pottery sherds (usually found close to kilns) is visible on the surface (zone 4 on **fig. 92**; area L7 and L8 on **figs. 85–86**). There, the magnetic map obtained with the Backpack (**fig. 98**) shows a strong anomaly which could be interpreted as the trace of the burning place of a kiln.

Despite a problem of calibration on the south-western part of zone 4 (**fig. 97**), different structures can be seen with a greater precision than with the Backpack (**fig. 98**). The alignments are most likely due to walls (arrows). Parts of them are visible on the surface (**fig. 98**) and the anomalies reveal their continuation underground. The centre of the strong anomaly in the south-west could be the location of a ceramic kiln (marked by a circle on **fig. 97**).

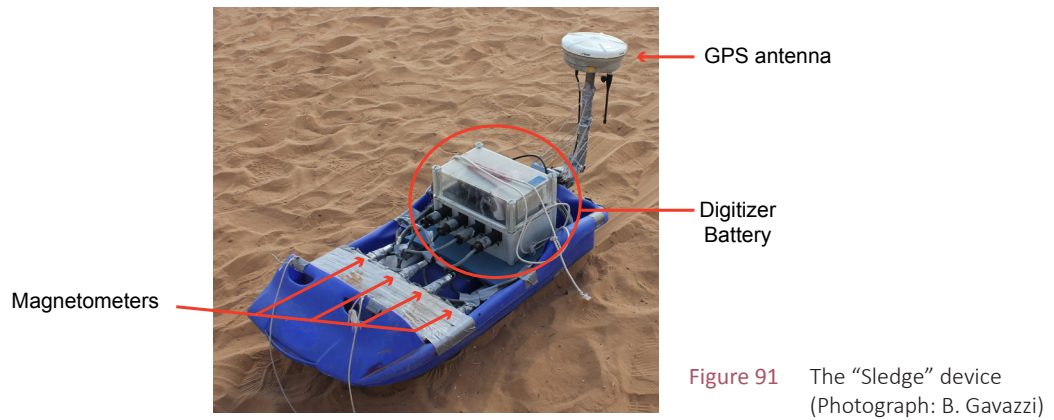
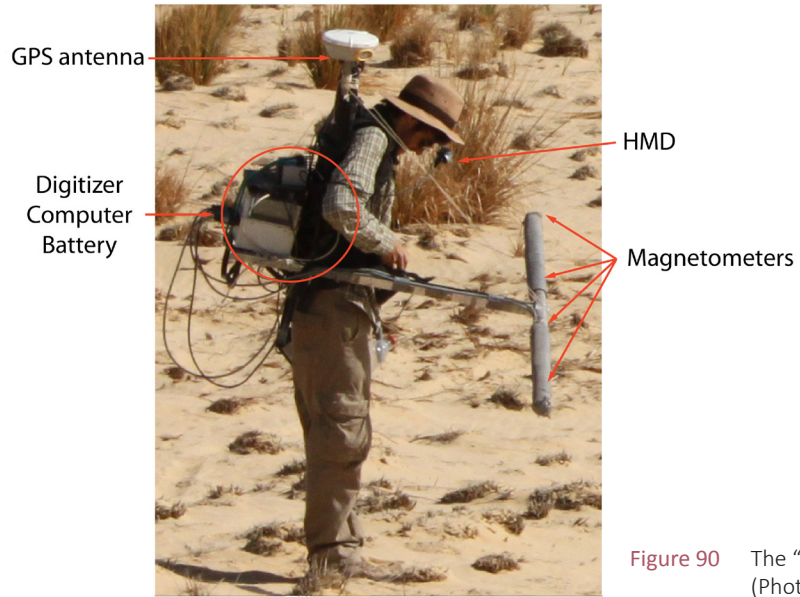
## Conclusion

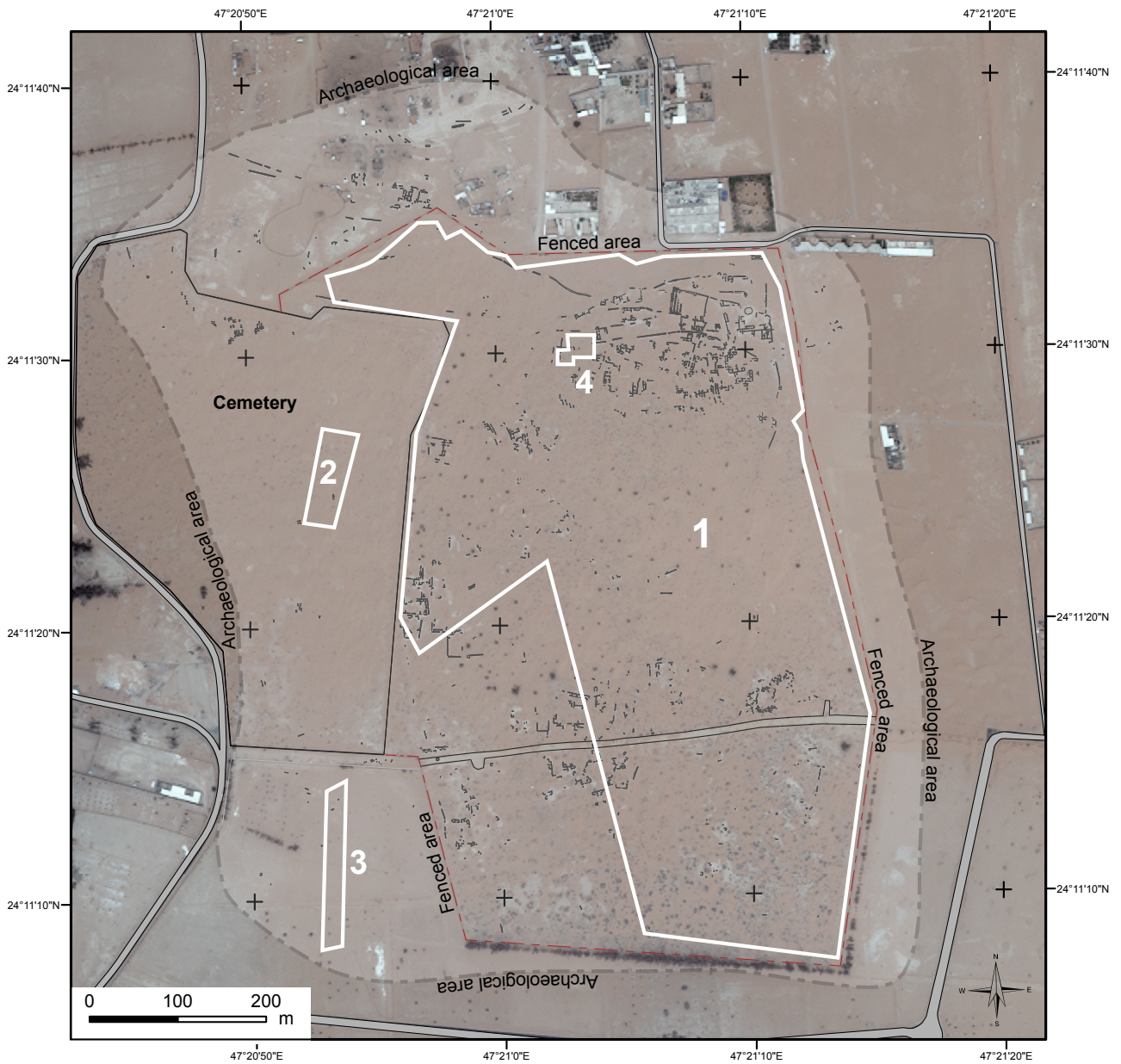
The magnetic cartography conducted on the site of al-Yamāma proved the efficiency of the use of vectorial magnetometers for archaeological purposes. The method also showed an important complementarity with the surface surveys which gave precise information for

the interpretation of the sources of the signal. In fact, the results obtained with the Backpack revealed the presence of two main areas with a high density of buildings partly or totally covered by sand: to the south-east and in the centre-west of the site. Moreover, the technique allowed the surrounding areas to be investigated to detect zones of potential interest.

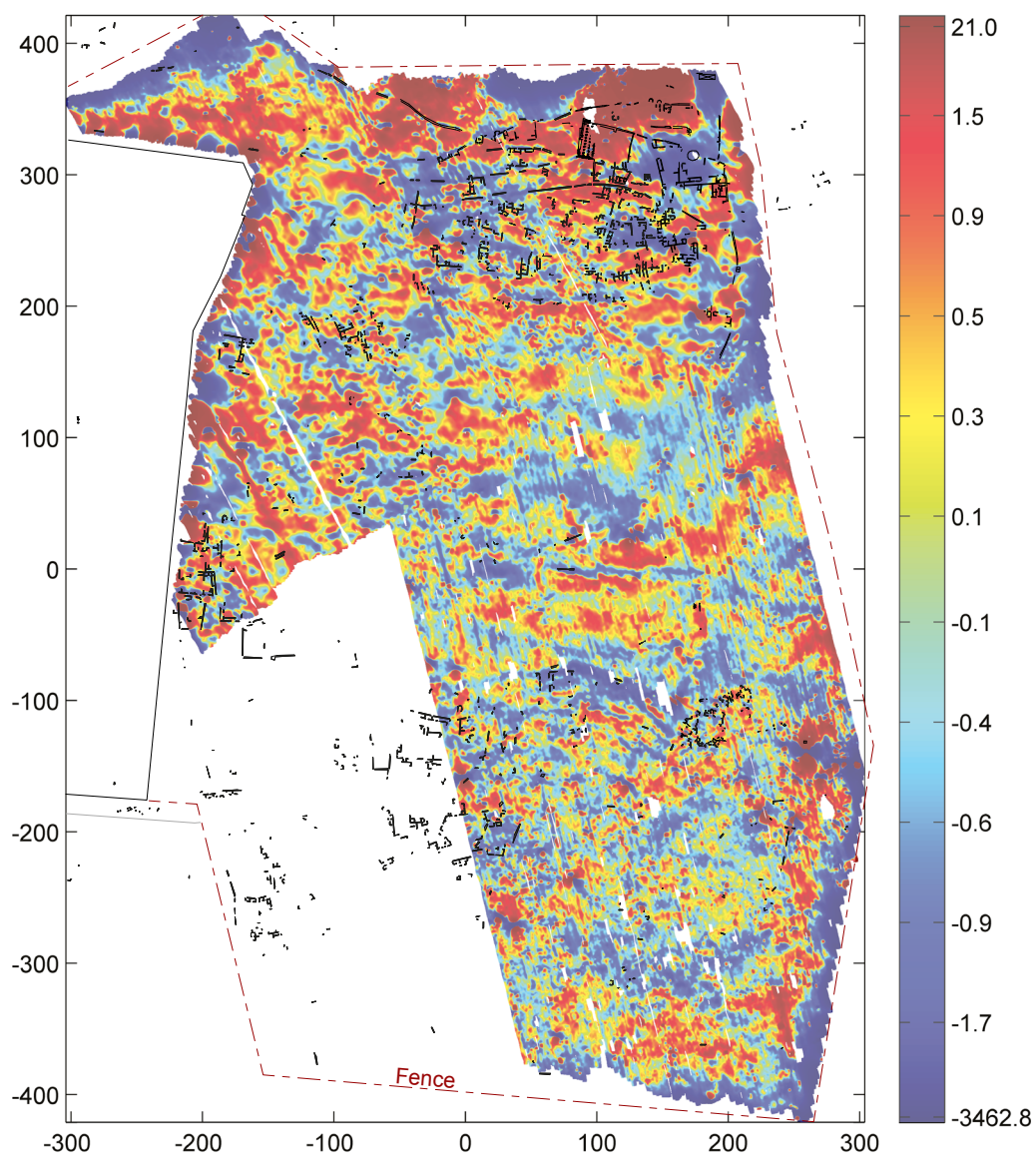
However, comparison with the surface structures showed that only the main elements could be mapped in such fashion. A solution to this lack of precision was found by using the Sledge on a targeted zone. The map obtained this way revealed much subtle details at the cost of speed of measurements.

Thus, the combination of the two devices proved to be a powerful tool to investigate the sub-surface of al-Yamāma. In order to complete the study, the south-western quarter as well as targeted areas will be mapped using the Backpack and the Sledge in the next field season.

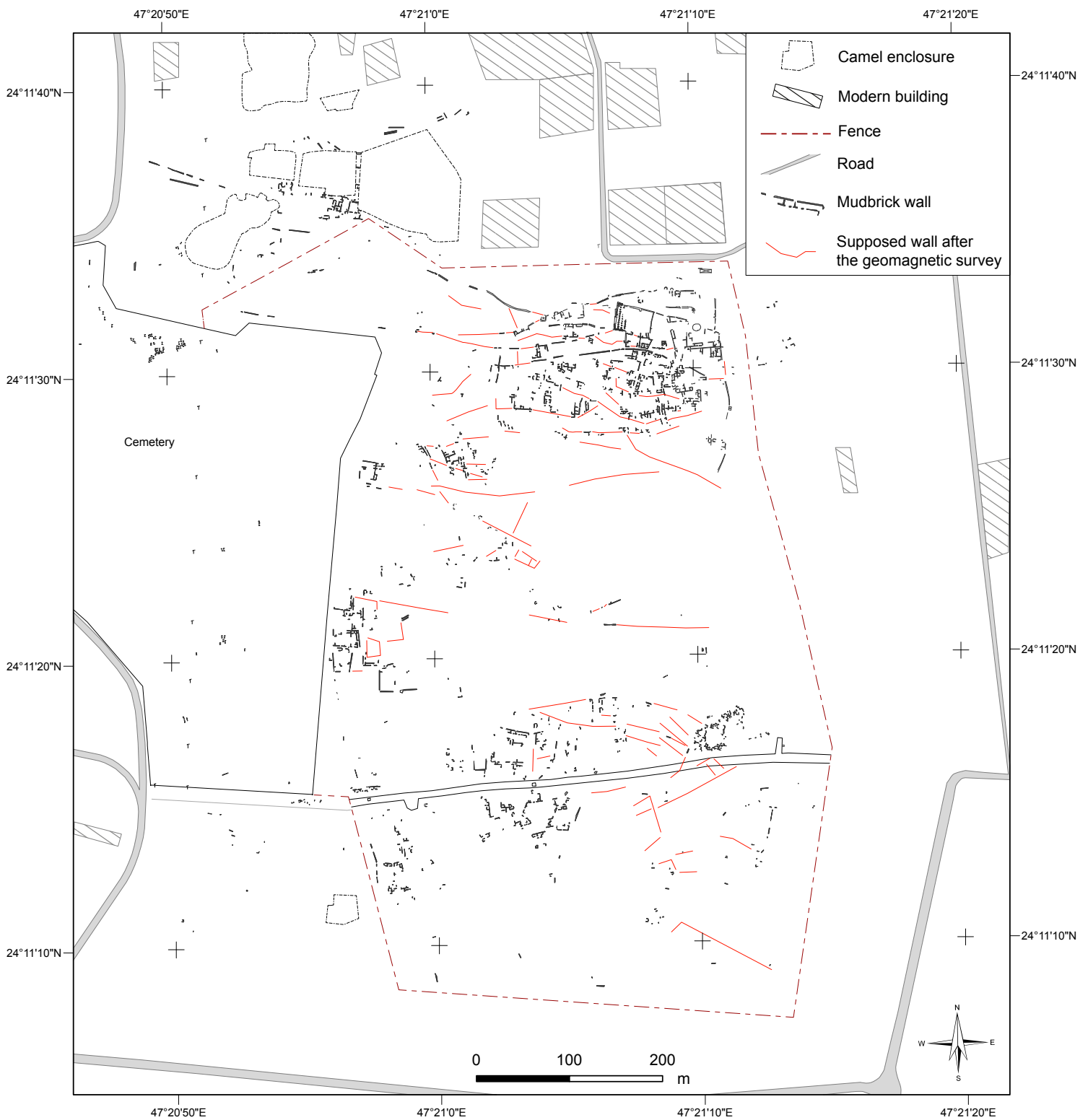




**Figure 92** Al-Yamāma: map of the different zones of geomagnetic survey. Zones 1, 2 and 3 were investigated with the Backpack, Zone 4 with the Sledge (B. Gavazzi, J. Schiettecatte – French-Saudi Archaeological Mission in al-Kharj/Includes World-View-2 Products © DigitalGlobeTM, distributed by e-GEOS)



**Figure 93** Al-Yamāma: superimposition of archaeological remains visible on the surface over the map of the magnetic anomalies of the zone 1. Scale in m, colour-bar in nT, mudbrick walls in black (B. Gavazzi, R. al-Khatib, M. Munsch; design: B. Gavazzi, M. Niveleau, J. Schiettecatte)



**Figure 94** Al-Yamāma: map of the archaeological structures visible on the ground and reconstitution of the layout of underground structures according to magnetic data (B. Gavazzi, M. Niveleau, J. Schiettecatte – French-Saudi Archaeological Mission in al-Kharj)

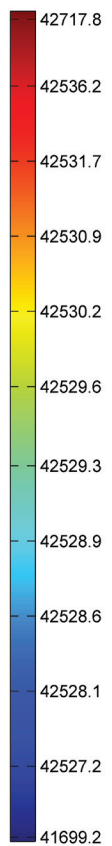
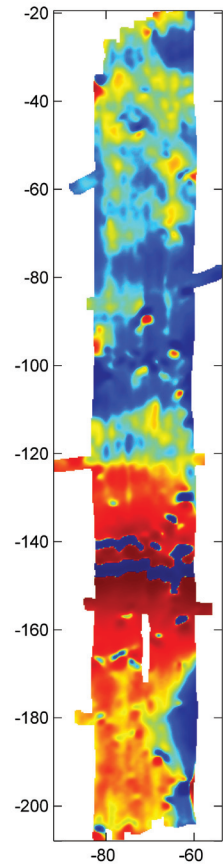
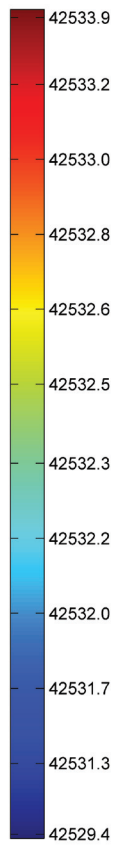
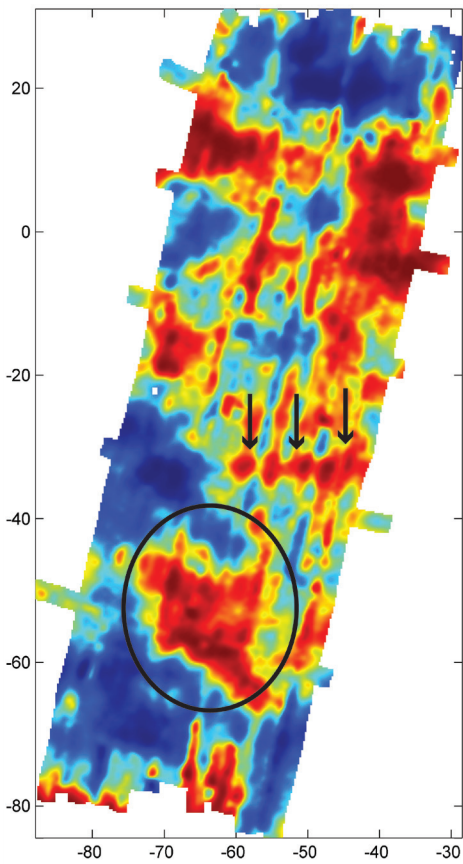


Figure 95 Al-Yamāma – zone 2 of the geomagnetic survey: map of the magnetic anomalies. Scale in metres, colour-bar in nT (B. Gavazzi)

Figure 96 Al-Yamāma – zone 3 of the geomagnetic survey: map of the magnetic anomalies. Scale in metres, colour-bar in nT (B. Gavazzi)

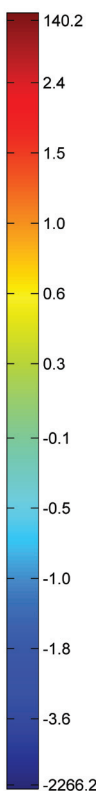
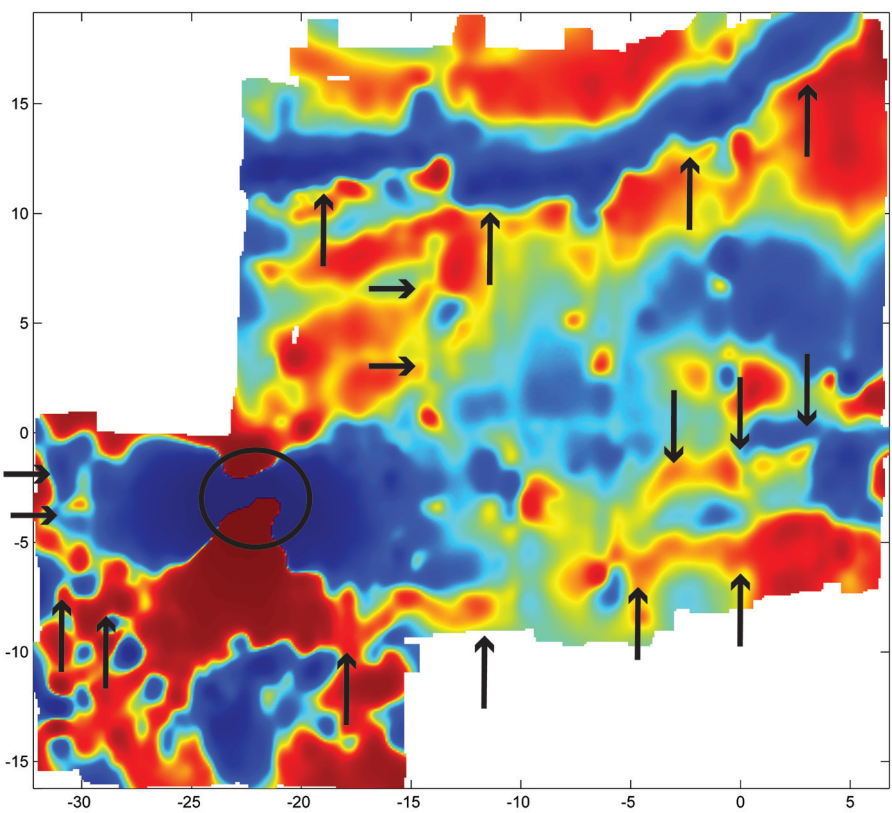


Figure 97 Al-Yamāma – zone 4 of the geomagnetic survey: map of the magnetic anomalies. Scale in metres, colour-bar in nT (B. Gavazzi)



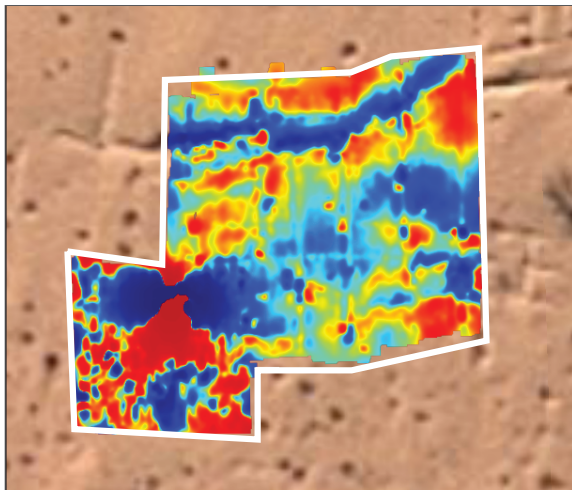
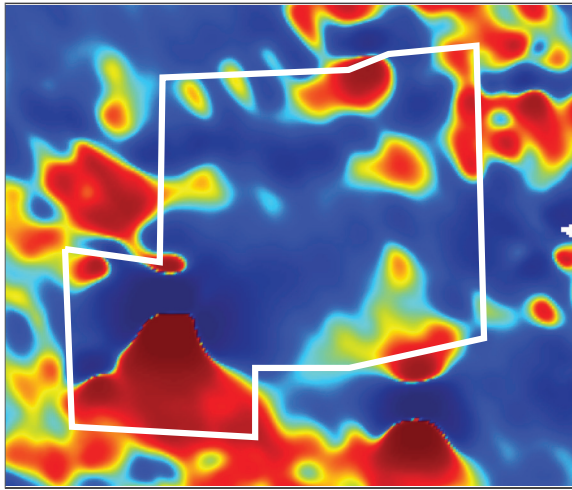
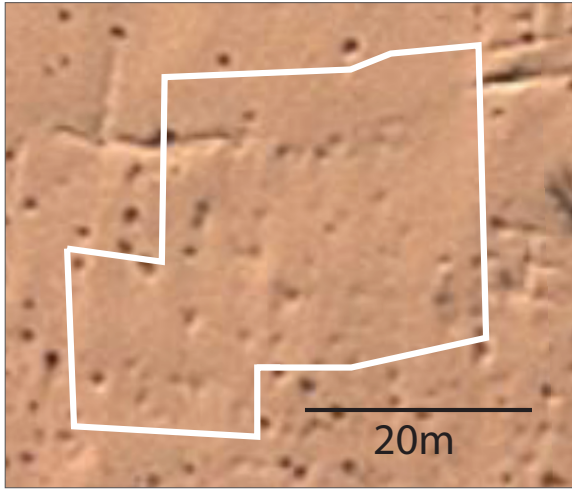


Figure 98 Al-Yamāma – zone 4 of the geomagnetic survey: comparison between satellite image (left), Backpack map (middle) and Sledge map (right) (B. Gavazzi)

APPENDIX 11

Mounir ARBACH



Thomas SAGORY



Hervé MONCHOT



Christian ROBIN



Antoine CHABROL

Guillaume CHARLOUX



Jérémie SCHIETTECATTE



'Abd al-'Aziz AL-HINÛ

## TEAM MEMBERS

'Abd al-'Aziz AL-GHAZZÎ



Michel MOUTON



'Awadh AL-QARNÎ



David GANDREAU



Rozan AL-KHATIB AL-KONTAR



Rémy CRASSARD



Guillaume FORTIN

Bruno GAVAZZI



Hâmid AL-TAYRÎ



Sultân AL-DAWAYSH

Sébastien MORISET



Marc MUNCHY



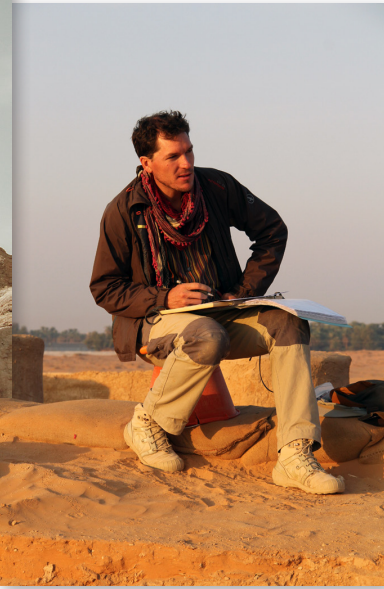
Éric FOUACHE



Lætitia MUNDUTEGUY



Yamandú HILBERT



Pierre SIMÉON

'Abd al-'Azîz AL-HAMÂD



Mathieu NIVÉLEAU



2012 fieldworkers



## LIST OF BIBLIOGRAPHICAL REFERENCES

ADAMS R., TOMBER T. & JOHNSON E.

- 2008 Appendix 5: Bronze Age and Iron Age pottery, and Classical and Islamic pottery catalogue. In G. Barker, D. Gilbertson & D. Mattingly (eds.), *Archaeology and Desertification The Wadi Faynan Landscape Survey. Southern Jordan*. Oxford: Oxbow Books: 1–50.

AKOPIAN A.M.

- 2010 Les fouilles du secteur 4. In J.-Fr. Salles & A. V. Sedov (eds.) *Qāni'. Le port antique du Ḥaḍramawt entre la Méditerranée, l'Afrique et l'Inde. Fouilles russes 1972, 1985-1989, 1991, 1993-1994* (Indicopleustoi, Archaeologies of the Indian Ocean, 6). Turnhout: Brepols: 123–148.

AMIRKHANOV H.

- 1991 *Palaeolithic in South Arabia*. Moscow: Scientific World [in Russian].  
1994 Research on the Palaeolithic and Neolithic of Hadramaut and Mahra. *Arabian Archaeology and Epigraphy* 5: 217–228.  
2006 *Stone Age of South Arabia*. Moscow: Nauka [in Russian].  
2008 *Cave al-Guza the multilayer site of Oldowan in South Arabia*. Moscow: TAUS.

ARMITAGE S.J., JASIM S.A., MARKS A.E., PARKER A.G. ET ALII

- 2011 The southern route “out of Africa”: evidence for an early expansion of modern humans into Arabia. *Science* 331: 453–456.

ANDREWS P.J. & WHYBROW P

- 2005 Taphonomic observations on a camel skeleton in a desert environment in Abu Dhabi. *Paleontologica Electronica* 8/1: 17 p.

[AL-]ASKAR A.

- 2002 *Al-Yamama in the Early Islamic Era*. (Salsala dirāsāt Athariyya Muḥakma, 10). Dryden – Riyadh: Ithaca Press – King Abdul Aziz Foundation for Research and Archives

ATLAS

- 1999 *Aṭlas al-Mamlaka al-‘arabiyya al-sa‘ūdiyya* (ṣadara bi-munasābat murūr mi‘at ‘ām ‘alā ta’sīs al-Mamlaka al-‘arabiyya al-sa‘ūdiyya). Riyadh: Wizārat al-ta‘līm al-‘ālī.

- AUGÉ M.  
1988 Révision du lézard *Uromastix europaeus* (Reptilia, Lacertilia) de l'Oligocène français. *Revue de Paléobiologie* 7/2: 317–325.
- AUGÉ M.  
2005 *Évolution des lézards du Paléogène en Europe*. (Mémoires du Muséum National d'Histoire Naturelle, Volume 192). Paris: Publications Scientifiques du Muséum.
- AVNER U., NEHMÉ L. & ROBIN CH.  
2013 A rock inscription mentioning Tha'labā, an Arab king from Ghassān. *Arabian Archaeology and Epigraphy* 24-2: 237–256.
- BADRE L.  
1991 Le sondage stratigraphique de Shabwa (1976–1981). *Syria* LXVIII: 229–314.
- BAGATTI B.  
1947 *I monumenti di Emmaus el-Qubeibeh e dei dintorini. Risultato degli scavi e sopralluoghi negli anni 1873, 1887–90, 1900–2, 1940–1944* (Pubblicazione dello Studium Biblicum Franciscanum, 4). Jerusalem.
- [AL-]BAKRĪ, ABŪ 'UBAYD 'ABD ALLĀH B. 'ABD AL-'AZĪZ ... AL-ANDALUSĪ / ED. M. AL-SAQĀ  
1945 [Mu'jam] = *Mu'jam mā 'sta'jam min asmā' al-bilād wa-'l-mawāḍi'* (al-Ma'had al-khalīfī li-l-abḥāth al-maghribiyya, Bayt al-Maghrib). 4 vol. 1945. Cairo: Maṭba'at Lajnat al-Ta'līf wa-'l-Tarjama wa-'l-Nashr.
- BALĀDHURĪ, ABŪ 'L-ḤASAN / ED. R.M. RIDWĀN  
1932 [Futūḥ, text] = *Futūḥ al-Buldān*. Ed. Riḍwān Muḥammad Riḍwān. 1932. Cairo: al-Maṭba'a al-Miṣriyya.
- BALĀDHURĪ, ABŪ 'L-ḤASAN / ED. PH.KH. HITTI  
1916 [Futūḥ, translation] = *The origins of the Islamic state being a translation from the Arabic, accompanied with annotations, geographic and historic notes, of the "Kitāb futūḥ al-buldān" of al-Imām abu-l 'Abbās Aḥmad ibn Jābir al-Balādhurī*. Vol. 1 (Studies in History, Economics and Public Law, vol. LXVIII, no. 163). New York: Columbia University [reedited in 2002: Georgias Press].
- BAR-YOSEF O. & MEIGNEN L.  
1992 Insights into Levantine Middle Paleolithic Cultural Variability. In H. Dibble & P. Mellars (eds.) *The Middle Palaeolithic: Adaptation, Behavior and Variability*. Philadelphia: University Museum, University of Pennsylvania: 163–182.
- BAR-YOSEF O & VAN PEER P.  
2009 The chaîne opératoire approach in Middle Paleolithic archaeology. *Current Anthropology* 50/1: 103–131.
- BARHAM L. & MITCHELL P.  
2008 *The First Africans: African Archaeology from the Earliest Toolmakers to most Recent Foragers*. Cambridge: Cambridge University Press.



- BARONE R.  
1986 *Anatomie comparée des mammifères domestiques. Tome 1. Ostéologie.* Paris: Vigot Frères.
- BARTINGTON G. & CHAPMAN C.E.  
2004 A high-stability fluxgate magnetic gradiometer for shallow geophysical survey applications. *Archaeological Prospection* 11/1: 19–34.
- BEECH M.  
2007 The large mammal and reptiles bones. In A. Poulter (ed.), *Nicopolis ad Istrum III: A late Roman and early Byzantine City: the Finds and the biological Remains* (Reports of the Research Committee of the Society of Antiquaries of London, 67). London: Oxbow books: 154–197.
- BEEG K., BEEG C. & ABRAMOV A.  
2008 *Mellivora capensis*. In IUCN 2011, *IUCN Red List of Threatened Species. Version 2011.2*. [downloaded on December 20, 2011].
- BEHRENS-ABOUSEIF D.  
2004 The Fire of 884/1479 at the Umayyad Mosque in Damascus and an Account of its Restoration. *Mamluk Studies Review* 8/1: 279–297.
- BEHRENSMEYER A.K.  
1978 Taphonomic and ecologic information from bone weathering. *Paleobiology* 4/2: 150–162.
- BELL R.C.  
1969 *Board and table games from many civilizations.* Oxford: Oxford University Press.
- BERGER J.-FR., BRAVARD J.P., PURDUE L., BENOIST A. ET ALII  
2012 Rivers of the Hadramawt watershed (Yemen) during the Holocene: Clues of late functioning. *Quaternary International* 266: 142–161.
- BETTINI L.  
1998 Alimentation et poésie : un exemple du “Taghil al-Gahiliyya”. *Arabica* 45: 73–87.
- BEYIN A.  
2013 A surface Middle Stone Age assemblage from the Red Sea coast of Eritrea: Implications for Upper Pleistocene human dispersals out of Africa. *Quaternary International* 300: 195–212.
- BIBBY T.G.  
1973 *Preliminary survey in East Arabia 1968* (Jutland Archaeological Society Publications, 12). Copenhagen: Gyldendal.
- BIN KHAMĪS A.M.  
1978 *Muʿjam al-Yamāma* (2 volumes). Riyadh.

BINFORD L.R.

1981 *Bones: ancient men and modern myths*. New York: Academic Press.

BLACHÈRE R.

1952 *Histoire de la littérature arabe, des origines à la fin du xv<sup>e</sup> siècle de J.-C.* Paris: Librairie d'Amérique et d'Orient Adrien Maisonneuve [vol. 1–3: 1952, 1964 and 1966].

BOËDA É.

1991 Approche de la variabilité des systèmes de production lithique des industries du Paléolithique inférieur et moyen: chronique d'une variabilité attendue. In C. Karlin (ed.) *Préhistoire et ethnologie. Le geste retrouvé*. Paris : Maison des Sciences de l'Homme: 37-79.

1994 *Le concept Levallois : variabilité des méthodes* (Monographie du CRA 9). Paris: CNRS Éditions.

BOESSNECK J.

1995 Birds, reptiles, and amphibians. In Ø. S. LaBianca & A von den Driesch (eds.), *Faunal remains: taphonomical and zooarchaeological studies of the animal remains from Tell Hesban and vicinity* (Hesban 13). Berrien Springs: Andrews University Press: 131–168.

BOESSNECK J., MÜLLER H.-H. & TEICHERT M.

1964 Osteologische Unterscheidungsmerkmale zwischen Schaf (*Ovis aries*, Linné) und Ziege (*Capra hircus*, Linné). *Kühn-Archiv* 78: 1–129.

BONILAURI S., BOËDA É., GRIGGO G., AL-SAKHEL H. & MUHESEN S.

1990 Un éclat de silex moustérien coincé dans un bassin d'autruche (*Struthio camelus*) à Umm El Tlel (Syrie centrale). *Paléorient* 33/2: 39–46.

BORDES F.

1961 *Typologie du Paléolithique ancien et moyen* (Cahiers du Quaternaire, 1). Paris: Éditions du CNRS.

BOUCHARLAT R.

2001 Les galeries de captage dans la péninsule d'Oman au premier millénaire avant J.-C. : Questions sur leurs relations avec les galeries du plateau iranien. In P. Briant (ed.) *Irrigation et drainage dans l'Antiquité : Qanats et canalisations souterraines en Iran, en Égypte et en Grèce*. Paris: Persika 2: 157–183.

2003 Iron Age Water-draining Galleries and the “Iranian qanât”. In D. T. Potts, H. al-Naboodah & P. Hellyer (eds.) *Proceedings of the first international conference on the archaeology of the United Arab Emirates (Abu Dhabi, 15-18 april 2001)*. London: Trident: 162–172.

BOUZIGARD A.C. & SAIDEL B.A.

2012 A note on the dating of the clay smoking pipes collected in the course of two archaeological surveys conducted in Saudi Arabia: the Comprehensive Survey of

Saudi Arabia (1976–1981) and Michael Gilmore's survey of the Darb al-Hajj. *Arabian Archaeology and Epigraphy* 23 (2012): 116–124.

CAMPBELL W.H.

2003 *Introduction to Geomagnetic Fields*. 2nd ed. Cambridge: Cambridge University Press.

CASKEL W.

1960 Al-A'shà Maymūn b. Qays . In *Encyclopédie de l'Islam, nouvelle édition*. Vol. I: 710–711.

1966 *Ġamharat an-nasab. Das genealogische Werk des Hišām ibn Muḥammad al-Kalbī*. 2 vol. Leiden: Brill.

CATON-THOMPSON G.

1938 Geology and archaeology of the Hadramaut, Southern Arabia. *Nature* 142: 139–142.

1953 Some Palaeoliths from South Arabia. *Proceedings of the Prehistoric Society* 19:189–218.

CAUSSIN DE PERCEVAL A.P.

1847–1848 *Essai sur l'histoire des Arabes avant l'islamisme, pendant l'époque de Mahomet, et jusqu'à la réduction de toutes les tribus sous la loi musulmane*. 3 vol. Paris: Firmin-Didot [reed. Graz: Akademische Druck- u. Verlagsanstalt, 1967].

CHARPENTIER V. & CRASSARD R.

2013 Back to Fasad... and the PPNB controversy. Questioning a Levantine origin for Arabian Early Holocene projectile points technology. *Arabian Archaeology and Epigraphy* 24/1: 28–36.

CHIOTTI L., OLSZEWSKI D.I., DIBBLE H.L., MCPHERRON S.R. ET ALII

2007 Paleolithic Abydos: Reconstructing Individual Behaviors across the High Desert Landscape. In Z. Hawass & J. Richards (eds.) *The Archaeology and Art of Ancient Egypt: Essays in Honor of David B O'Connor*. Cairo: Supreme Council of Antiquities Press: 169–183.

CLARK G.

1995 The mammalian remains from the early Byzantine Fort of Upper Zohar. In R. P. Harper (ed.), *Upper Zohar: an early Byzantine fort in Palestina Tertia. Final report of excavations in 1985–1986* (British Academy Monographs in Archaeology, 9). Oxford: Oxford University Press: 49–84.

CLAVEL B.

2005 Approvisionnement en viande et poissons dans un établissement religieux du XVII<sup>e</sup> siècle : les Feuillantines de Paris. *Histoire médiévale et archéologique* 19: 111–122.

CLEUZIOU S.

1989 The Early Dilmun Period (Third and Early Second Millennium BC). In P. Lombard & M. Kervran (eds.) *Bahrain National Museum, Archaeological Collections. I. A selection of pre-Islamic antiquities from excavations 1954–1975*. Manama: Directorate of Museum and Heritage: 11–50.

- COHEN A. & SERJEANTSON D.  
 1996 *A manual for the identification of bird bones from archaeological sites*. London: Archetype Publications Ltd. [revised edition].
- COOPER J.S. & POOLE D.F.G.  
 1973 The dentition and dental tissues of the agamid lizard *Uromastix*. *Journal of Zoology, London* 169: 85–100.
- COOPER J.S., POOLE D.F.G. & LAWSON R.  
 1970 The dentition of agamid lizards with special reference to tooth replacement. *Journal of Zoology, London* 162: 85–98.
- COURTILLOT V. & LE MOUËL J.L.  
 1988 Time Variations of the Earth's Magnetic Field: From Daily to Secular. *Annual Review of Earth and Planetary Sciences* 16/1: 389–476.
- CRASSARD R.  
 2008a *La Préhistoire du Yémen. Diffusions et diversités locales, à travers l'étude d'industries lithiques du Hadramawt* (BAR International Series S1842). Oxford: Archaeopress.  
 2008b The “Wa'shah method”: an original laminar debitage from Hadramawt, Yemen. *Proceedings of the Seminar for Arabian Studies* 38: 3–14.  
 2009a Middle Paleolithic in Arabia: the view from the Hadramawt region, Yemen. In M. D. Petraglia & J. I. Rose (ed.) *The Evolution of Human Populations in Arabia. Paleoenvironments, Prehistory and Genetics*. London: Springer Academic Publishers: 151–168.  
 2009b Modalities and characteristics of human occupations in Yemen during the Early/Mid-Holocene. *Comptes Rendus de l'Académie des Sciences - Geoscience* 341: 713–725.
- CRASSARD R. & DRECHSLER P.  
 2013 Towards new paradigms: multiple pathways for the Arabian Neolithic. *Arabian Archaeology and Epigraphy* 24/1: 3–8.
- CRASSARD R., GUY H., SCHIETTECATTE J. & HITGEN H.  
 2011 Reuse of tombs or cultural continuity? The case of tower-tombs in Shabwa governorate (Yemen). In L. Weeks (ed.) *Death and Burial in Arabia and Beyond. Multidisciplinary perspectives* (BAR International Series 2107, Society for Arabian Studies Monographs No. 10), Oxford: Archaeopress: 173–177.
- CRASSARD R. & HILBERT Y.H.  
 2013 A Nubian Complex Site from Central Arabia: Implications for Levallois Taxonomy and Human Dispersals during the Upper Pleistocene. *PLoS ONE* 8/7: e69221. doi:10.1371/journal.pone.0069221
- CRASSARD R., PETRAGLIA M.D., DRAKE N.A., BREEZE P. ET ALII  
 2013a Middle Palaeolithic and Neolithic Occupations around Mundafan Palaeolake, Saudi Arabia: Implications for Climate Change and Human Dispersals. *PLoS ONE* 8/7: e69665. doi:10.1371/journal.pone.0069665

- CRASSARD R., PETRAGLIA M.D., PARKER A.G., PARTON A. *ET ALII*  
 2013b Beyond the Levant: First Evidence of a Pre-Pottery Neolithic Incursion into the Nefud Desert, Saudi Arabia. *PLoS ONE* 8/7: e68061. doi:10.1371/journal.pone.0068061
- CRASSARD R. & THIÉBAUT C.  
 2011 Levallois points production from eastern Yemen and some comparisons with assemblages from East-Africa, Europe and the Levant. In J.-M. Le Tensorer, R. Jagher & M. Otte (eds.) *The Lower and Middle Palaeolithic in the Middle East and neighbouring regions*, Liège: ERAUL.
- CREW H.  
 1975 An evaluation of the relationship between the Mousterian complexes of the Eastern Mediterranean: a technology perspective. In F. Wendorf & A. E. Marks (eds.) *Problems in Prehistory: North Africa and Levant*. Dallas: SMU Press: 427–437.
- CROFT P.  
 1995 Bird and small remains from Upper Zohar. In R. P. Harper (ed.), *Upper Zohar: an early Byzantine fort in Palestina Tertia. Final report of excavations in 1985-1986* (British Academy Monographs in Archaeology 9). Oxford: Oxford University Press: 87–95.
- CUNNINGHAM P.  
 2001 Notes on the diet, survival rate, and burrow specifics of *Uromastix aegyptius microlepis* from the United Arab Emirates. *Asiatic Herpetological Research* 9: 30-33.  
 2013 Daily activity pattern and diet of a population of the Spiny-tailed Lizard, *Uromastix aegyptius microlepis*, during summer in the United Arab Emirates. *Zoology in the Middle East* 2: 37–46.
- DAYAN T., WOOL D. & SIMBERLOFF D.  
 2002 Variation and covariation of skulls and teeth: modern carnivores and the interpretation of fossil mammals. *Paleobiology* 28/4: 508–526.
- DE CUPERE B., DURU R. & UMURTAK G.  
 2008 Animal husbandry at the Early Neolithic to early Bronze age site of Bademağacı (Antalya province, SW Turkey): evidence from the faunal remains. In E. Vila, L. Gourichon, A. M. Choyke & H. Buitenhuis (eds.), *Archaeozoology of the Near East VIII*. (TMO 49). Lyon: Maison de l’Orient et de la Méditerranée: 367–405.
- DE GAURY G.  
 1945 A Burial Ground in Al-Kharj. *The Geographical Journal* 106/3: 152–153.
- DELAGNES A.  
 1992 *L’organisation de la production lithique au Paléolithique Moyen. Approche technologique à partir de l’étude des industries de la Chaise de Vouthon (Charente)*, PhD dissertation, University of Paris X-Nanterre.

- DELAGNES A., CRASSARD R., BERTRAN P. & SITZIA L.  
 2013 Human and cultural dynamics in southern Arabia at the end of the Middle Paleolithic. *Quaternary International* 300: 234–243.
- DELAGNES A., JAUBERT J & MEIGNEN L.  
 2007 Les technocomplexes du Paléolithique moyen en Europe occidentale dans leur cadre diachronique et géographique. In B. Vandermeersch & B. Maureil (eds.) *Les Néandertaliens, biologie et culture*. Paris: Éditions CTHS: 213–219.
- DELAGNES A. & MEIGNEN L.  
 2006 Diversity of lithic production systems during the Middle Palaeolithic in France. Are there any chronological trends? In E. Hovers & S. Kuhn (eds.) *Transition before the transition*. Santa Barbara: Springer: 85–107.
- DELAGNES A., TRIBOLO C., BERTRAN P., BRENET M. *ET ALII*  
 2012 Inland human settlement in southern Arabia 55,000 years ago. New evidence from the Wadi Surdud Middle Paleolithic site complex, western Yemen. *Journal of Human Evolution* 63/3: 452–474.
- DIBBLE H.-L. & BAR-YOSEF O  
 1995 *The Definition and Interpretation of Levallois Technology* (Monographs in World Archaeology, 23). Madison: Prehistory Press.
- DRIESCH A. VON DEN  
 1976 *A guide to the measurement of animal bones from archaeological sites* (Peabody Museum Bulletin 1). Harvard: Harvard University Press.
- DRIESCH A VON DEN & BOESSNECK J.  
 1995 Final report on the zooarchaeological investigation of animal bones finds from Tell Hesban, Jordan. In Ø. S. LaBianca & A von den Driesch (eds.), *Faunal remains: taphonomical and zooarchaeological studies of the animal remains from Tell Hesban and vicinity* (Hesban 13). Berrien Springs: Andrews University Press: 65–108.
- DRIESCH A. VON DEN & DOCKNER A.  
 2002 Animal exploitation in medieval Siraf, Iran, based on the faunal remains from the excavations at the Great Mosque. *Bonner zoologische Beiträge* 50/3: 227–247.
- DRIESCH A VON DEN & OBERMAIER M.  
 2007 The hunt for wild dromedaries during the 3rd and 2nd millennia BC on the United Arab Emirates coast Camel bone finds from the excavations at Al Sufouh 2, Dubai, UAE. *Documenta Archaeolobiologiae* 6: 133–167.
- DURAND C.  
 2011 Pottery Study. In L. Nehmé (ed.) *Report on the Fourth Excavation Season (2011) of the Madâ'in Sâlih Archaeological Project*. <http://halshs.archives-ouvertes.fr/halshs-00671451>: 327–361.

- EISENMANN V. & BECKOUCHE S.  
 1986 Identification and discrimination of metapodials of modern and Pleistocene Equus, wild and domestic. In R. H. Meadow & H.-P. Uerpmann (eds.), *Equids in the Ancient World* (Beihefte zum Tübinger Atlas des Vorderen Orients, Reihe A). Wiesbaden: 117–163.
- FERNÁNDEZ H.  
 2001 *Ostéologie comparée des petits ruminants eurasiatiques sauvages et domestiques (genres Rupicapra, Ovis, Capra et Capreolus) : diagnose différentielle du squelette appendiculaire*. PhD Dissertation. Geneva University.
- FIEY J.M.  
 1969 Diocèses syriens orientaux du Golfe Persique. In *Mémorial Mgr Gabriel Khoury-Sarkis*. Louvain : Impr. orientaliste: 177-219 [Reed. J.-M. Fiey 1979. *Communautés syriaques en Iran et en Irak des origines à 1552*. London: Variorum Reprints, II].
- FINKBEINER U.  
 1992 Keramik der seleukidischen und parthischen Zeit aus den Grabungen in Uruk-Warka II. *Baghdader Mitteilungen* 23: 473–580.  
 1993 Uruk-Warka. Fundstellen der Keramik der Seleukiden- und Partherzeit. In U. Finkbeiner (ed.), *Materialien zur Archäologie der Seleukiden- und Partherzeit im südlichen Babylonien und im Golfgebiet*. Tübingen: Ernst Wasmuth Verlag: 3–16.
- FINSTER B.  
 1994 *Frühe iranische Moscheen vom Beginn des Islam bis zur Zeit salğuischer Herrschaft* (Archaeologische Mitteilungen aus Iran. Ergänzungsband, 19). Berlin: D. Reimer.
- FISHER J.W.  
 1995 Bone surface modifications in zooarchaeology. *Journal of Archaeological Method and Theory* 2/1: 7–68.
- FLEITMANN D. & MATTER A.  
 2009 The speleothem record of climate variability in Southern Arabia. *Comptes Rendus de l'Académie des Sciences - Geoscience* 341: 633–642.
- FRIFELT K.  
 2001 *Islamic Remains in Bahrain*. Moesgaard: Jutland Archaeological Society.
- GAJDA I.  
 2004 Ḥimyar en Arabie centrale – un nouveau document. *Arabia* 2: 87–98.
- GAZDAR M.S., POTTS D.T. & LIVINGSTONE A.  
 1984 Excavations at Thaj. *Atlat* 8: 55–108.

GERBER Y.

- 2008 The Byzantine and early Islamic pottery from Jabal Hârûn (chapter 11). In Z.T. Fiema & J. Frösén (eds.), *Petra - The Mountain of Aaron. Volume I. The Church and the Chapel*. Helsinki: Societas Scientiarum Fennica: 287–329.

[AL-]GHAZZI A.

- 1996 A preliminary report of an excavation at Hazem Agila in al-Kharj oasis/central region of Saudi Arabia. *Atlal* 14: 43–51.
- 2009 *Awân fukhâriyya min mawqa' Ḥazm 'Aqila (muḥāfaḍat al-Ḥarj/Maṭṭaqat al-Riyādh)*. Riyadh: Dārat al-malik 'Abd al-'Azīz.
- 2010 *A Comparative Study of Pottery from a site in the al-Kharj Valley, Central Arabia*. (Series of archaeological refereed studies, 1). Riyadh: Saudi Commission for Tourism and Antiquities.
- 2011a *Mashrū' masaḥ w-tawthīq al-Manshāt al-ḥajariyya fī maḥīṭ 'Aynī Farzān. Al-mujāllad al-awal. Dirāsāt maydāniyya muqārna li-l-muqābarā al-rakāmiyyat al-ḥajariyya*. Riyadh: Dārat al-malik 'Abd al-'Azīz.
- 2011b *Mashrū' masaḥ w-tawthīq al-Manshāt al-ḥajariyya fī maḥīṭ 'Aynī Farzān. Al-mujāllad al-thānī. Qanāt al-rī fī Farzān 'Aynī Farzān wa-fukhār-ha (Dirāsāt maydāniyya tawthīqiyya athāriyya muqārna)*. Riyadh: Dārat al-malik 'Abd al-'Azīz.

GOLVIN L.

- 1988 Le *miḥrāb* et son éventuelle signification. In A. Papadopoulo (ed.), *Le Miḥrāb dans l'architecture et la religion musulmanes*. Leiden – New York: E. J. Brill: 53–55.

GOODERS J.

- 1979 *Birds of Heath and Woodland: Spotted Sandgrouse*. London: Orbis Publishing. p. 2–11.

GRAINGER D. (DIR.)

- 2007 *The geologic evolution of Saudi Arabia, a voyage through space and time*. Riyadh: Saudi Geological Survey.

GRIGSON C.

- 1980 The craniology and the relationship of four species of *Bos*: 5. *Bos indicus* L. *Journal of Archaeological Science* 7: 3–32.

GROOM N.

- 1983 *A Dictionary of Arabic Topography and Placenames*. Beirut – London: Librairie du Liban – Longman.

HAERINCK E., PHILLIPS C.S., POTTS D.T. & STEVENS K.G.

- 1993 Ed-Dur, Umm al-Qaiwain (U.A.E.). In U. Finkbeiner (ed.) *Materialien zur Archäologie der Seleukiden-und Partherzeit im südlichen Babylonien und im Golfgebiet*. Tübingen: Ernst Wasmuth Verlag: 183–194.



- [AL-]HAMDĀNĪ, ABŪ MUḤAMMAD AL-ḤASAN B. AḤMAD B. YA'QŪB / ED. M. 'L-AKWA'.
- 1967 [Iklīl 2, text] = *Kitāb al-Iklīl, al-juz' al-thānī, li-Lisān al-Yaman Abī Muḥammad al-Ḥasan b. Aḥmad b. Ya'qūb al-Hamdānī*. Ed. Muḥammad b. 'Alī 'l-Akwa' al-Ḥiwālī (al-Maktaba al-yamaniyya, 3). Cairo: al-Sunna al-muḥammadiyya.
- [AL-]HAMDĀNĪ, ABŪ MUḤAMMAD AL-ḤASAN B. AḤMAD B. YA'QŪB / ED. D.H. MÜLLER.
- 1968 [Şifa, text] = *Şifat Jazīrat al-'Arab. Al-Hamdānī's Geographie der arabischen Halbinsel nach den Handschriften von Berlin, Constantinopel, London, Paris und Strassburg*. Ed. David Heinrich Müller. 2 vol. Leiden: E.J. Brill [First edition 1884–1891].
- HANNESSTAD L.
- 1983 *Ikaros 2. The Hellenistic pottery from Failaka, with a survey of Hellenistic pottery in the Near East* (Jutland Archaeological Society Publications, XVI/2). Aarhus.
- HANSEN D.P., OCHSENSCHLAGER E.L. & AL-RADI S.
- 2004 Excavations at Jujah, Shibam, Wadi Hadhramawt. *Arabian Archaeology and Epigraphy* 15: 43–67.
- HARRISON D.L. & BATES P.J.J.
- 1991 *The Mammals of Arabia*. Sevenoaks: Harrison Zoological Museum Publications.
- HASS H., LAGRO H.E. & STEINER M.L.
- 1992 Second and third seasons of excavations at Tell Abū Sarbut, Jordan Valley (preliminary report). *Annual of the Department of Antiquities of Jordan* 36: 333–339.
- HELMER D.
- 2000 Discrimination des genres *Ovis* et *Capra* à l'aide des prémolaires inférieures 3 et 4 et interprétation des âges d'abattage : l'exemple de Dikili Tash (Grèce). *Ibex, Journal of Mountain Ecology* 5: 29–38.
- HELMER D., GOURICHON L. & VILA E.
- 2007 The development of the exploitation of products from *Capra* and *Ovis* (meat, milk and fleece) from the PPNB to the Early Bronze in the northern Near East (8700 to 2000 BC cal.). *Anthropozoologica* 42/2: 41–69.
- HILBERT Y.H.
- 2012 *An investigation of Late Palaeolithic stone tools Assemblages from the Nejd Plateau, Southern Oman*. PhD dissertation, University of Birmingham.
- 2013 Khamseen rock shelter and the Late Palaeolithic-Neolithic transition in Dhofar. *Arabian Archaeology and Epigraphy* 24: 51–58.
- HILBERT Y.H., ROSE J.I. & ROBERTS R.G.
- 2012 Late Palaeolithic core-reduction strategies in Dhofar, Oman. *Proceedings of the Seminar for Arabian Studies* 42: 101–118.
- HILLENBRAND R.
- 1994 *Islamic Architecture. Form, Function and Meaning*. Edinburgh.

- HORWITZ L.K. & MONCHOT H.  
 2002 Choice cuts: hominid butchery activities at the Lower Paleolithic site of Holon, Israel. In H. Buitenhuis, A. M. Choyke, M. Mashkour & A. H. al-Shiyab (eds.), *Archaeozoology of the Near East V. Proceedings of the fifth international symposium on the archaeozoology of southwesern Asia and Adjacent areas*. Gröningen: ARC publication: 48-62.
- HORWITZ L.K. & ROSEN B.  
 2005 A review of camel milking in the Southern Levant. In J. Mulville & A. K. Outram (eds.), *The Zooarchaeology of Fats, Oils, Milk and Dairying, Proceedings of the 9th ICAZ Conference, Durham 2002*. Oxford: Oxbow Books: 121-131.
- HUBER CH.  
 1891 *Journal d'un voyage en Arabie (1883-1884). Publié par la Société asiatique et la Société de Géographie, avec Atlas*. Paris: Imprimerie nationale.
- HURST V.J. & KELLY A.R.  
 1961 Patination of cultural Flints. *Science* vol. 134, no. 3474: 251-256.
- HUTTERER R.  
 2008 *Paraechinus aethiopicus*. In IUCN 2012, *IUCN Red List of Threatened Species. Version 2012.2*. www.iucnredlist.org.
- IBN AL-KALBĪ, ABŪ 'L-MUNDHIR HISHĀM B. MUḤAMMAD B. AL-SĀ'IB / ED. N. ḤASAN  
 1988 [Nasab, text] = *Nasab Ma'add wa-'l-Yaman al-kabīr*. Ed. Nājī Ḥasan. Beirut: 'Ālam al-kutub – Maktabat al-Nahḍat.
- IBN BATTŪTA, ABŪ 'ABDALLĀH MUHAMMAD IBN 'ABDALLĀH AL-LAWĀTĪ AL-ṬĀNJĪ / ED. C. DEFREMERY & B.R. SANGUINETTI  
 1982 *Voyages. II. De La Mecque aux steppes russes et à l'Inde. Traduction de l'arabe de C. Defremery et B. R. Sanguinetti (1858). Introduction et notes de S. Yerasimos (Littérature et voyages)*. Paris: La Découverte – Poche.
- IBN KHAMĪS A.  
 1978 *Mu'jam al-Yamāma*. 2 vol. (al-Mu'jam al-jughrāfī li-l-mamlaka al-'arabiyya al-sa'ūdiyya). S. l.
- INIZAN M.-L. & ORTLIEB L.  
 1987 Préhistoire dans la région de Shabwa au Yémen du sud (R.D.P. Yémen). *Paléorient* 13/1: 522.
- [AL-]JĀSIR Ḥ.  
 1977 *al-Mu'jam al-jughrāfī li-l-bilād al-'arabiyya as-sa'ūdiyya*. 2 vol. (nuṣūṣ wa-abḥāth jughrāfiyya wa-ta'rīkhiyya 'an Jazīrat al-'Arab, 19). Riyadh: Dār al-Yamāma.

- JOMIER J.  
 2013 al-Fuṣṭāṭ. In P. Bearman, Th. Bianquis, C.E. Bosworth, E. van Donzel & W.P. Heinrichs (eds.), *Encyclopaedia of Islam, Second Edition*. Leiden: Brill Online [consulted on 04 October 2013].
- [AL-]JUHANY U.M.  
 2002 *Najd before the Salafi reform movement. Social, political, and religious conditions during the three centuries preceding the rise of the Saudi state*. Reading – Riyadh: Ithaca Press – King Abdul Aziz Foundation for Research and Archives.
- KENNET D.  
 2004 *Sasanian and Islamic pottery from Ras al-Khaimah: classification, chronology and analysis of trade in the Western Indian Ocean* (Society for Arabian Studies Monographs No. 1. BAR International Series, 1248). Oxford: Archaeopress.
- KERVAN M.  
 1977 Les niveaux islamiques du secteur oriental du t p  de l'Apadana. II Le mat riel c ramique. *Cahiers de la DAFI VII* : 75–161.
- KERVAN M., HIEBERT F. & ROUGEULLE A. (EDS.)  
 2006 *Qal'at al-Bahrain a trading and military outpost*. (Indicopleusto , Archaeologies of the Indian Ocean). Turnhout: Brepols.
- KHORD DHBEH, ABU'L-K SIM  UBAIDALLAH IBN  ABDALLAH IBN / ED. M.J. DE GOEJE  
 1889 *Kit b al-mas lik wa-l-mam lik. Auctore Abu 'l-K sim Obaidallah ibn Abdallah Ibn Khord dhbeh et excerpta e Kit b al-Khar dj auctore Kod ma ibn Dja'afar quae cum versione Gallica edidit, indicibus et glossario instruxit M.J. de Goeje*. Leiden: Brill.
- KHUSRAW, N SIR-I / ED. CH. SCHEFER  
 1881 *Relation du voyage de Nassiri Khosrau en Syrie, en Palestine, en  gypte, en Arabie et en Perse, pendant les ann es de l'h gire 437-444 (1035-1042), publi , traduit et annot  par Charles Schefer*. Paris: E. Leroux.
- KING G.R.D.  
 1986 *The historical mosques of Saudi Arabia*. London – New York: Longman.
- KISTER M.J.  
 1965 The campaign of  ulub n. A new light on the expedition of Abraha. *Le Mus on LXXVIII*: 425-436. [Reed. in M. J. Kister 1980. *Studies in J hiliyya and Early Islam*. London: Variorum Reprints, IV].
- KITCHEN  
 2000 *Documentation for Ancient Arabia, Part II. Bibliographical Catalogue of Texts*. Liverpool
- KLEINDIENST M.R.  
 2006 On Naming Things Behavioral Changes in the Later Middle to Earlier Late Pleistocene, Viewed From the Eastern Sahara. In E. Hovers & S. Kuhn (eds.)

*Transition before the Transition: Evolution and Stability in the Middle Paleolithic and Middle Stone Age.* New York: Springer: 13–28.

KURAN A.

1968 *The Mosque in early Ottoman Architecture*, Chicago: The University of Chicago Press.

LARCHER P.

2000 La Mu'allaqa de al-Ḥārith b. Ḥilliza : essai de traduction 'variationniste'. *Arabic and Middle Eastern Literatures* 3: 133–148.

LECKER M.

1989 *The banū Sulaym. A Contribution to the Study of Early Islam* (The Max Schloessinger Memorial Series, Monographs, IV). Jerusalem: The Hebrew University of Jerusalem.

LESBRE M.F.X.

1903 *Recherches anatomiques sur les camélidés.* (Archive du Musée d'Histoire Naturelle de Lyon, 8), Lyon.

LÉZINE A.-M., ROBERT C., CLEUZIQU S., INIZAN M.-L. ET ALII

2010 Climate change and human occupation in the Southern Arabian lowlands during the last deglaciation and the Holocene. *Global and Planetary Change* 72: 412–428.

LINFORD N.

2006 The application of geophysical methods to archaeological prospection. *Reports on Progress in Physics* 69/7: 2205–2257.

LOMBARD P.

1999 Le matériel funéraire du Dilmoun ancien. In P. Lombard (ed.) *Bahreïn. La civilisation des deux mers de Dilmoun à Tylos.* Paris: Institut du Monde Arabe: 56–71.

LYALL CH.J.

1906 Ibn al-Kalbī's account of the First Day of al-Kulāb. In C. Bezold (ed.) *Orientalische Studien Theodor Nöldeke zum siebzigsten Geburtstag (2. März 1906) gewidmet von Freunden und Schülern.* 1. Band. Gieszen: Verlag von Alfred Töpelmann: 127–154.

LYMAN R.L.

1987 Archaeofaunas and butchery studies: a taphonomic perspective. *Advances in Archaeological Method and Theory* 10: 249–337.

1994 *Vertebrate taphonomy.* Cambridge: Cambridge University Press.

2008 *Quantitative Paleozoology.* Cambridge: Cambridge University Press.

MA'SAL

1999 *Ma'sal. Maṭbū'a 'ilmiyya tu'nà bi-dirāsāt al-kitābāt al-'arabiyya al-qadīma fī jazīrat al-'Arab.* Riyadh: Lajnat dirāsāt al-kitābāt al-'arabiyya al-qadīma fī qism al-ātār wa-'l-matāḥif bi-Jāmi'at al-malik Sa'ūd.

- MABRY J. & PALUMBO G.  
 1988 The 1987 Wadi el-Yabis survey. *Annual of the Department of Antiquities of Jordan* 32: 275–305.
- MACDONALD K.C.  
 1992 The domestic chicken (*Gallus gallus*) in Sub-Saharan Africa: a background to its introduction and its osteological differentiation from indigenous fowls (Numidinae and *Francolinus* sp.). *Journal of Archaeological Science* 19: 303–318.
- MARKS A.E.  
 2008 Into Arabia, perhaps, but if so, from where? *Proceedings of the Seminar for Arabian Studies* 38: 15–24.
- MARKS A.E. & CONARD N.J.  
 2008 Technology vs. typology: The case for and against a transition from the MSA to the LSA at Mumba Cave, Tanzania. In T. Aubry, F. Almeida, A. C. Araujo & M. Tiffagom (eds.) *Typology vs. Technology. Proceedings of the XV UISPP World Congress in Lisbon September 4-9* (BAR International Series, S1831). Oxford: Archaeopress: 123–131.
- MARQUART J.  
 1901 *Ērānšahr nach der Geographie des Ps. Moses Xorenac'i, mit historisch-kritischem Kommentar und historischen und topographischen Excursen* (Abhandlungen der königlichen Gesellschaft der Wissenschaften zu Göttingen. Phil.-hist. Klasse, Neue Folge III, Nr. 2). Berlin: Weidmann.
- MARTIN L., MCCORRISTON J. & CRASSARD R.  
 2009 Early Arabian pastoralism at Manayzah in Wadi Sana, Hadramawt. *Proceedings of the Seminar for Arabian Studies* 39: 271–282.
- [AL-]MAS'ŪDĪ, 'ALĪ IBN AL-HUSAYN / ED. C. BARBIER DE MEYNARD C. & A. PAVET DE COURTEILLE  
 1861–1877 *Les prairies d'or [Murūj al-dhahab wa ma'ādin al-Jawhar], traduction française de [Charles-Adrien-Casimir] Barbier de Meynard et [Abel] Pavet de Courteille*. 9 vol. Paris: Imprimerie impériale.
- MASON R.B.  
 1997 Early Mediaeval Iraqī Lustre-painted and Associated Wares: Typology in a Multidisciplinary Study. *Iraq* LIX: 1–47.
- MASON R.B. & KEALL E.J.  
 1991 The 'Abbāsīd glaze ware of Sīrāf and Baṣra connection: petrographic analysis. *Iran* 29 : 51–66.
- MAWSŪ'AT ASMĀ' AL-AMĀKIN  
 2003 *Mawsū'at asmā' al-amākin fī 'l-mamlaka al-'arabiyya al-sa'ūdiyya*. 6 vol. Riyadh: Dārat al-malik 'Abd al-'Azīz – Hay'at al-masāḥa al-jiyūlūjiyya al-sa'ūdiyya.

McCLURE H.

- 1976 Radiocarbon chronology of Late Quaternary Lakes in the Arabian Desert. *Nature* 263: 755–756.
- 1978 Ar Rub' al Khali. In S. S. al-Sayari & J. G. Zötl (eds.) *Quaternary Period in Saudi Arabia. Vol. 1: sedimentological, hydrogeological, hydrochemical, geomorphological, and climatological investigations in central and eastern Saudi Arabia*. Wien: Springer Verlag.

McCORRISTON J.

- 2013 The Neolithic in Arabia: a view from the south. *Arabian Archaeology and Epigraphy* 24/1: 68–72.

McCORRISTON J., OCHES E.A., WALTER D.E. & COLE K.L.

- 2002 Holocene paleoecology and prehistory in highland southern Arabia. *Paléorient* 28/1: 61–88.

McCORRISTON J., STEIMER T., HARROWER M., WILLIAMS K. ET ALII

- 2011 Gazetteer of small-scale monuments in prehistoric Hadramawt, Yemen: a radiocarbon chronology from the RASA-AHSD Project research 1996–2008. *Arabian Archaeology and Epigraphy* 22: 1–22.

MEIGNEN L.

- 1995 Levallois lithic production systems in the Middle Paleolithic of the Near East: the case of the unidirectional method. In H.L. Dibble & O. Bar-Yosef (eds.) *The definition and interpretation of Levallois technology* (Monographs in World Archaeology, 23), Philadelphia: Prehistory Press: 361–379.

MEIGNEN L. & BAR-YOSEF O.

- 1988 Variabilité technologique au Proche Orient: l'exemple de Kebara. In L. Binford & J.-P. Rigaud (eds.) *L'Homme de Néandertal, vol. 4, La Technique*, Liege: ERAUL: 81–95.
- 1991 Les outillages lithiques moustériens de Kebara (fouilles 1982–1985) : premiers résultats. In O. Bar-Yosef & B. Vandermeersch (eds.) *Le squelette moustérien de Kebara 2*. Paris: Éditions du CNRS: 49–75.
- 2004 Réflexion sur la fin du Paléolithique moyen et les débuts du Paléolithique supérieur au Proche Orient. In P. Van Peer, P. Sémal & D. Bonjean (eds.) *Le Paléolithique moyen, Sessions générales et posters section 5, Actes du 16<sup>e</sup> Congrès UISPP, Université de Liège, Belgique, 2-8 septembre 2001*. Oxford: Archaeopress: 235–245.

MIGOWSKI C., STEIN M., PRASAD S., NEGENDANK J. ET ALII

- 2006 Holocene climate variability and cultural evolution in the Near East from the Dead Sea sedimentary record. *Quaternary Research* 66: 421–431.

MONCHOT H.

- 1996 La consommation du mouflon (*Ovis antiqua*, Pommerol 1879) au pléistocène moyen à la Caune de l'Arago (Tautavel, Pyrénées-Orientales). *Géologie Méditerranéenne* XXIII/2: 101–115.

- In press The faunal remains: preliminary results. In G. Charloux & R. Loreto (eds.), *Dūma II. Report of the Saudi-Italian-French Archaeological Project at Dūmat al-Jandal (Saudi Arabia)*. Riyadh: Saudi Commission for Tourism and Antiquities.
- MONCHOT H., BAILON S. & SCHIETTECATTE J.  
 2014 Archaeozoological evidence for traditional consumption of spiny-tailed lizard (*Uromastix aegyptia*) in Saudi Arabia. *Journal of Archaeological Science* 45 (May 2014): 96–102.
- MONCHOT H. & LÉCHELLE J.  
 2002 Statistical non parametric methods for the study of fossil populations. *Paleobiology* 28/1: 55–69.
- MOODY S.M.  
 1980 *Phylogenetic and Historical Biogeographical Relationships of the Genera in the Family Agamidae (Reptilia: Lacertilia)*. Ph.D. Dissertation. University of Michigan, Ann Arbor.
- MORONY M.G.  
 2002 The Late Sasanian Economic Impact on the Arabian Peninsula. *Nāme-ye Irān-e Bāstān* 1/2: 25-37.
- MOUTON M.  
 2008 *La péninsule d'Oman de la fin de l'Âge du fer au début de la période sassanide (250 av.-350 ap. J.-C.)* (BAR International Series, 1776, Society for Arabian Studies Monographs, 6). Oxford: Archaeopress.  
 2009 The settlement patterns of north-eastern and south-eastern Arabia in late antiquity. *Arabian Archaeology and Epigraphy* 20: 185–207.
- MOUTON M. & SCHIETTECATTE J.  
 2014 *In the desert margins. The settlement process in ancient South and East Arabia* (Arabia Antica, 9). Rome: L'Erma di Bretschneider.
- [AL-]MUGHANNAM A.S.  
 1988 Excavation of the Dhahran Burial Mounds, Fourth Season, 1986. *Atlat* 11: 9–28.  
 2000 A Preliminary Report on the Excavation of al-Uqair, north-west of Abu Zahmul in al-Ahsa Region. *Atlat* 15: 45-86 [engl.]; 55-95 [ar.]; pls. 12–26.
- MULDER-HEYMANS N.  
 2002 Archaeology, experimental archaeology and ethnoarchaeology on bread ovens in Syria. *Civilisations* 49: 197-221.
- MÜLLER W.W.  
 2010 *Sabäische Inschriften nach Ären datiert. Bibliographie, Texte und Glossar* (Akademie der Wissenschaften und der Literatur – Mainz, Veröffentlichungen der Orientalischen Kommission, 53). Wiesbaden: Harrassowitz.

- MUNRO N.D., BAR-OZ G. & STUTZ A.J.  
 2009 Aging mountain gazelle (*Gazella gazella*): refining methods of tooth eruption and wear and bone fusion. *Journal of Archaeological Science* 36: 752–763.
- MUNRO N.D., BAR-OZ G. & HILL A.C.  
 2011 An exploration of character traits and linear measurements for sexing mountain gazelle (*Gazella gazella*) skeletons. *Journal of Archaeological Science* 38: 1253–1265.
- MUNSCHY M., BOULANGER D., ULRICH P. & BOUIFLANE M.  
 2007 Magnetic mapping for the detection and characterization of UXO: Use of multi-sensor fluxgate 3-axis magnetometers and methods of interpretation. *Journal of Applied Geophysics* 61/3–4: 168–183.
- NABIGHIAN M.N., GRAUCH V.J.S., HANSEN R.O., LAFEHR T.R. ET ALII  
 2005 75th Anniversary: The historical development of the magnetic method in exploration. *Geophysics* 70/6: 33–61.
- NEHMÉ L., [AL-]TALHI D. & VILLENEUVE FR. (DIR.)  
 2010 *Report on the first excavation season at Mada'in Sâlih, 2008, Saudi Arabia*. Riyadh: SCTA.
- NORTHEGE A.  
 1997 Les origines de la céramique à glaçure polychrome dans le monde islamique. In G. Démians d'Archimbaud (dir.), *La céramique médiévale en Méditerranée. Actes du VI<sup>e</sup> congrès de l'AIECM2, Aix-en-Provence, 13-18 novembre 1995*. Aix en Provence : Narration édition: 213–223.
- NORTHEGE A. & FALKNER R.K.  
 1983 *Pottery from Samarra'. The surface survey and the Excavations at Qadisiyy 1983–89*. Unpublished report, 2 vol.
- OLSEN N., TØFFNER-CLAUSEN L., SABAKA T.J., BRAUER P. ET ALII  
 2003 Calibration of the Ørsted vector magnetometer. *Earth, Planets, and Space* 55: 11–18.
- OUESLATI T.  
 2008 Spatial fluctuation of food habits in byzantine Beirut (Bey 002, Bey 028, Bey 115), *Archaeozoology of the Near East VIII* (TMO 49). Lyon: Maison de l'Orient et de la Méditerranée: 629–640.
- PARKER A.G., GOUDIE A., STOKES S., WHITE K. ET ALII  
 2006a A record of Holocene climate change from lake geochemical analyses in southeastern Arabia. *Quaternary Research* 66: 465–476.
- PARKER A.G., PRESTON G., WALKINGTON H. & HODSON M.J.  
 2006b Developing a framework of Holocene climatic change and landscape archaeology for the lower Gulf region, Southeastern Arabia. *Arabian Archaeology and Epigraphy* 17: 125–130.



- PARKER A.G. & ROSE J.I.  
 2008 Climate change and human origins in southern Arabia. *Proceedings of the Seminar for Arabian Studies* 38 : 25–42.
- PAYNE S.  
 1973 Kill-off patterns in sheep and goats: the mandibles from Asvan Kale. *Anatolian Studies* 23: 281–303.
- PETERS J.  
 1989 Osteomorphological features of the appendicular skeleton of gazelles, genus *Gazella* Blainville 1816, Bohor Reedbuck, *Redunca redunca* (Pallas, 1767) and Bushbuck, *Tragelaphus scriptus* (Pallas, 1766). *Anatomia, Histologia, Embryologia* 18: 97–113.
- PETERS J., VAN NEER W. & PLUG I.  
 1997 *Comparative postcranial osteology of hartebeest (Alcelaphus buselaphus), Scimitar oryx (Oryx dammah) and Addax (Addax nasomaculatus), with notes on the osteometry of Gemsbok (Oryx gazella) and Arabian Oryx (Oryx leucoryx)* (Annales Sciences Zoologiques, vol. 280). Tervuren: Musée Royal de l’Afrique Centrale.
- PETRAGLIA M.D.  
 2003 The lower Paleolithic of the Arabian peninsula: occupation, adaptation and dispersal. *Journal of World Prehistory* 17/2: 141–179.  
 2005 Hominin responses to Pleistocene environmental change in Arabia and South Asia. In M. J. Head & P. L. Gibbard (eds.) *Early–Middle Pleistocene Transitions: The Land–Ocean Evidence* (Geological Society, Special Publications, 247). London: 305–319.
- PETRAGLIA M.D. & ALSHAREKH A.  
 2003 The Middle Paleolithic of Arabia: implications for modern human origins, behavior and dispersals. *Antiquity* 77: 671–684.
- PETRAGLIA M.D., ALSHAREKH A., BREEZE P., CLARKSON C. ET ALII  
 2012 Hominin dispersal into the Nefud desert and middle Palaeolithic settlement along the Jubba palaeolake, northern Arabia. *PLoS ONE* 7/11: e49840. doi:10.1371/journal.pone.0049840
- PETRAGLIA M.D., ALSHAREKH A.M., CRASSARD R., DRAKE N. ET ALII  
 2011 Middle Paleolithic occupation on a Marine Isotope Stage 5 lakeshore in the Nefud Desert, Saudi Arabia. *Quaternary Science Reviews* 30/13–14: 1555–1559.
- PETRAGLIA M.D. & ROSE J.I.  
 2009 *The Evolution of Human Populations in Arabia. Paleoenvironments, Prehistory and Genetics*. London: Springer Academic Publishers.
- PHILBY H. ST J.  
 1919 *Southern Nejd. Journey to Kharj, Aflaj, Sulaiyyil and Wadi Dawasir in 1918*. Cairo: The Arab Bureau.  
 1920 Southern Najd. *The Geographical Journal* 55/3–4: 161–185.

- 1921 *Heart of Arabia: a record of travel & exploration*. London: Constable and Company Ltd.
- 1949 Two notes from Central Arabia. *The Geographical Journal* 113: 86–93
- POTTS D.T.
- 1984 Northeastern Arabia in the Later Pre-Islamic Era. In R. Boucharlat & J.-Fr. Salles (eds.), *Arabie orientale, Mésopotamie et Iran méridionale de l'Âge du Fer au début de la période islamique*. Paris: ADFP: 85–144.
- 2001 Ostrich distribution and exploitation in the Arabian Peninsula. *Antiquity* 75: 182–190.
- POWERS R.W., RAMIREZ I.F., REDMOND C.D. & ELBERG F.L. JR.
- 1966 *Geology of the Arabian Peninsula: sedimentary geology of Saudi Arabia* (U.S. Geological survey Professional paper 560-D).
- PRESTON G. W. & PARKER A. G.
- 2013 Understanding the evolution of the Holocene Pluvial Phase and its impact on Neolithic populations in south-east Arabia. *Arabian Archaeology and Epigraphy* 24/1: 84–97.
- PREUSSER F.
- 2009 Chronology of the impact of Quaternary climate change on continental environments in the Arabian Peninsula. *Comptes Rendus de l'Académie des Sciences – Geoscience* 341: 1–12.
- PRIMDAHL F.
- 1979 The fluxgate magnetometer. *Journal of Physics E: Scientific Instruments* 12/4: 241–253.
- PRINGLE D.
- 1986 *The red tower. Settlement in the Plain of Sharon at the Time of the Crusaders and Mamluks A.D. 1099-1516* (British School of Archaeology in Jerusalem series no 1). London: British School of Archaeology in Jerusalem.
- PRUMMEL W. & FRISCH H.-H.
- 1986 A guide for distinction of species, sex and body size in bones of sheep and goat. *Journal of Archaeological Science* 13: 567–577.
- RABBAT N.
- 2013 Riwāk. In P. Bearman, Th. Bianquis, C.E. Bosworth, E. van Donzel & W.P. Heinrichs (eds.), *Encyclopaedia of Islam, Second Edition*. Leiden: Brill Online [consulted on 03 October 2013].
- [AL-]RASHID I.A.
- 1986 *Al-Rabadhah, a portrait of Early Islamic civilisation in Saudi Arabia*. London: Longman.
- RINGROSE T.J.
- 1993 Bone counts and statistics; a critique. *Journal of Archaeological Science* 20: 121–157.

ROBIN CH.J.

- 1996 Le Royaume Ḥijride, dit “royaume de Kinda”, entre Ḥimyar et Byzance. *Académie des Inscriptions et Belles-Lettres, Comptes rendus des séances de l'année 1996*: 665–714.
- 2008 Les Arabes des « Romains », des Perses et de Ḥimyar (III<sup>e</sup>-VI<sup>e</sup> s. è. chr.). *Semitica et Classica* 1: 167–202.
- 2012a Abraha et la reconquête de l'Arabie déserte : un réexamen de l'inscription Ryckmans 506 = Murayghān 1. *Jerusalem Studies on Arabic and Islam* 39: 1–93.
- 2012b Les rois de Kinda. In A. al-Helabi, D.G. Letsios, M. al-Moraekhi & A. al-Abduljabbar (eds.) *Arabia, Greece and Byzantium. Cultural Contacts in Ancient and Medieval Times*. Riyadh: King Saud University: 59–129.

ROBIN CH.J. & GAJDA I.

- 1994 L'inscription du wādī 'Abadān. *Raydān* 6: 113–137.

ROBIN CH.J. & PRIOLETTA A.

- 2013 Nouveaux arguments en faveur d'une identification de la cité de Gerrha avec le royaume de Hagar (Arabie orientale). *Semitica et Classica* 6: 131-185.

ROBIN CH.J. & ṬAYRĀN S.

- 2012 Soixante-dix ans avant l'Islam, l'Arabie toute entière dominée par un roi chrétien. *Académie des Inscriptions et Belles-Lettres, Comptes rendus de l'année 2012*: 525–553.

ROSE J.I.

- 2006 *Among Arabian Sands: Defining the Palaeolithic of Southern Arabia*. Ph.D. dissertation, Southern Methodist University, Dallas.

ROSE J.I. & BAILEY G.N.

- 2008 Defining the Palaeolithic of Arabia? Notes on the Roundtable Discussion. *Proceedings of the Seminar for Arabian Studies* 38: 65–70.

ROSE J.I. & PETRAGLIA M.

- 2009 Tracking the origin and evolution of human populations in Arabia. In M. Petraglia & J. Rose (eds.) *The Evolution of Human Populations in Arabia. Palaeoenvironments, Prehistory and Genetics*. London: Springer: 1–12.

ROSE J.I., USIK V.I., MARKS A.E., HILBERT Y.H. ET ALII

- 2011 The Nubian Complex of Dhofar, Oman: an African Middle Stone Age industry in Southern Arabia. *PLoS ONE* 6/11: e28239. doi:10.1371/journal.pone.0028239

ROSEN AYALON M.

- 1974 *La céramique islamique de Suse* (Mémoires de la Délégation archéologique Française en Iran). Paris : Geuthner.

ROSENTHAL F.

- 2013 La'ib. In P. Bearman, Th. Bianquis, C.E. Bosworth, E. van Donzel & W.P. Heinrichs (eds.), *Encyclopaedia of Islam, Second Edition*, Leiden: Brill Online [consulted on 02 October 2013].

- ROSEVEAR D.R.  
1974 *The carnivores of West Africa*. London: British Museum.
- ROSSLÄNDER R.  
1975 The formation of patina on flint. *Archaeometry* 17: 106–110.  
1978 *Schwierigkeiten bei der Datierung von Silices. Mineralische Rohstoffe als kulturhistorische Informationsquelle*. Hagen: Kennicke.
- ROUSSET M.-O. & MARCHAND S.  
2001 Secteur nord de Tebtynis (Fayyoum) Mission de 2000. *Annales Islamologiques* 35: 409–461.
- ROY K.K.  
2010 *Potential Theory in Applied Geophysics*, Berlin – Heidelberg: Springer.
- SALLES J.F. & LOMBARD P.  
1999 La céramique. In P. Lombard (ed.), *Bahrein. La civilisation des deux mers, de Dilmun à Tylos. Exposition présentée à l'Institut du Monde Arabe du 18 mai au 29 août 1999*, Paris – Gand : Institut du Monde Arabe – Snoeck-Ducaju & Zoon: 162–175.
- SANLAVILLE P.  
2000 *Le Moyen-Orient arabe, le milieu et l'homme*. Paris: Armand Colin.
- SASAKI T.  
1996 Umayyad and Abbasid finds from the 1994 excavations at Jazirat al-Hulayla. *Bulletin of Archaeology of the University of Kanazawa* 23: 179–222.
- SAUVAGET J.  
1947 *La mosquée omeyyade de Médine : étude sur les origines architecturales de la mosquée et de la basilique*. Paris: Vanoest.
- SAYYID ABDEL MONEM A.H.  
1988 Emendations to the Bir Murayghan Inscription Ry 506 and a new minor inscription from there. *Proceedings of the Seminar for Arabian Studies* 18: 131–143.
- SCHIETTECATTE J., [AL-]GHAZZI A., CHARLOUX G., CRASSARD R. ET ALII  
2013 The oasis of al-Kharj through time: first results of archaeological fieldwork in the province of Riyadh (Saudi Arabia). *Proceedings of the Seminar for Arabian Studies* 43: 285–308.
- SCHIETTECATTE J., CHABROL A., GANDREAU D., GAVAZZI B. ET ALII  
2012 *Second season of the Saudi-French mission in al-Yamāma, al-Kharj area (11 November – 18 December 2012)*. Unpublished preliminary report available on line: <http://halshs.archives-ouvertes.fr/halshs-00797003/>

SCHMID S.G.

- 2000 Die Feinkeramik der Nabatäer: Typologie, Chronologie und kulturhistorische Hintergründe. In S. G. Schmid & B. Kolb (eds.) *Petra. Ez Zantur II. Ergebnisse der Schweizerisch-Liechtensteinischen Ausgrabungen 1988-1992*. (Terra Archaeologica IV). Mainz: Philipp von Zabern: 1-199.

SCOTT-JACKSON J., SCOTT-JACKSON W., ROSE J.I. & JASIM S.

- 2008 Investigating Upper Pleistocene stone tools from Sharjah, UAE: Interim report. *Proceedings of the Seminar for Arabian Studies* 38: 43-54.

SEDOV A.V.

- 2007 The Cultural Quarter: Area F. In A. Avanzini (ed.) *A Port in Arabia between Rome and the Indian Ocean (3rd cent. BC - 5th cent. AD)*. *Khawr Rūrī Report 2*. (Arabia Antica 5). Rome: "L'Erma" di Bretschneider: 183-259.
- 2010 Les fouilles du secteur 6. In J.-Fr. Salles & A. V. Sedov (eds.), *Qāni'. Le port antique du Ḥaḍramawt entre le Méditerranée, l'Afrique et l'Inde. Fouilles russes 1972, 1985-1989, 1991, 1993-1994* (Indicopleustoi, Archaeologies of the Indian Ocean). Turnhout: Brepols: 183-281.

SIMÉON P. & LORETO R.

- Forthc. The pottery from Dûmat al-Jandal: Excavations levels (1 to 8) on the Qasr Marîd area.

SIMPSON ST J.

- 1998 'Where There's Smoke, There's Fire ...'. Pipe-smoking in the Ottoman Empire. *The British Museum Magazine* 31 (summer 1998): 14-17.
- 2009 The archaeology of the clay pipe in the Near East. *Al-Rafidān* XXX (2009): 1-9.

SITZIA L., BERTRAN P., BOULOGNE S., BRENET M. ET ALII

- 2012 The Paleoenvironment and Lithic Taphonomy of Shi'bat Dihya 1, a Middle Palaeolithic Site in Wadi Surdud, Yemen. *Geoarchaeology* 27: 471-491.

SMITH G.R.

- 2004 Al-Yamāma. In *Encyclopédie de l'Islam, nouvelle édition*. Vol. XI: 292-293.

SMITH I.

- 2005 The mammal, Bird, Reptile and Molluscs remains. In T. Insoll (ed.), *The Land of Enki in the Islamic Era. Pearls, Palms and Religious identity in Bahrain*. London - New York - Bahrain: Kegan Paul: 193-231.

SMUTS M.M.S. & BEZUIDENHOUT A.J.

- 1987 *Anatomy of the dromedary*. Oxford: Clarendon Press.

STEIGER C.

- 1990 *Vergleichend morphologische Untersuchungen an einzelknochen des postkranialen Skeletts des Altweltkamele*. PhD Dissertation. Ludwig-Maximilians-Universität, Munich.

- STINER M.C., KUHN S.L., WEINER S. & BAR-YOSEF O.  
 1995 Differential burning, recrystallization and fragmentation of archaeological bone. *Journal of Archaeological Science* 22: 223–237.
- STONE C.  
 1982 The camel bird of Arabia. *Saudi Aramco World* March/April 1982: 10–11.
- STUDER J.  
 2010 Preliminary Report on Faunal Remains. In L. Nehmé, D. al-Talhi & Fr. Villeneuve (ed.), *Unpublished report. Report on the Third Excavation Season (2010) of the Madâ'in Sâlih Archaeological Project* [Report on-line: <http://halshs.archives-ouvertes.fr/halshs-00542793>]: 285–293.  
 2011 Étude préliminaire des ossements analysés en 2011. In L. Nehmé (dir.), *Rapport sur la quatrième campagne (2011) de la mission archéologique de Madâ'in Sâlih* [unpublished report].
- STUDER J. & SCHNEIDER A.  
 2008 Camel use in the Petra Region, Jordan: 1st century AD. In E. Vila, L. Gourichon, A. M. Choyke & H. Buitenhuis (eds.), *Archaeozoology of the Near East VIII* (TMO 49). Lyon: Maison de l'Orient et de la Méditerranée: 581–596.
- SYNODICON ORIENTALE / ED. CHABOT J.-B.  
 1902 [Text and translation] = *Synodicon orientale ou Recueil de synodes nestoriens, publié, traduit et annoté par Jean-Baptiste Chabot* (Notices et extraits des manuscrits de la Bibliothèque nationale et autres bibliothèques, publiés par l'Académie des Inscriptions et Belles-Lettres, 37). Paris: Imprimerie nationale.
- AL-ṬABARĪ ABŪ JAʿFAR MUHAMMAD B. JARĪR / ED. DE GOEJE M.J.  
 1964 [Taʿrīkh, text] *Taʿrīkh al-rusul wa-l-mulūk, I : Annales quos scripsit Abu Djafar Mohammed Ibn Djarir at-Tabari, cum aliis edidit M.J. De Goeje, Prima series, ii, recensuerunt J. Barth et Th. Nöldeke*. Leiden: Brill.
- AL-ṬABARĪ ABŪ JAʿFAR MUHAMMAD B. JARĪR / ED. NOLDEKE TH.  
 1879 [Taʿrīkh, german translation] = *Geschichte der Perser und Araber zur Zeit der Sasaniden, aus der arabischen Chronik des Tabari, übersetzt und mit ausführlichen Erläuterungen und Ergänzungen versehen von Th. Noldeke* [Reed. Leiden: Brill, 1973].
- AL-ṬABARĪ ABŪ JAʿFAR MUHAMMAD B. JARĪR / ED. BOSWORTH C.E.  
 1999 [Taʿrīkh, engl. translation] = *The History of al-Ṭabarī, vol. V, The Sāsānids, the Byzantines, the Lak(h)mids, and Yemen, translated by C.E. Bosworth* (Bibliotheca persica). New York: State University of New York Press.
- TALHI D., IBRAHIM M., MURSI J.M. & ASKUBI KH.  
 1986 Exavation at Mabiyyat. Second Season. 1404-1405 / 1984-1985. *Atlal* 10: 58-63.

TAVO B VII 1

1987 *Tübinger Atlas des Vorderen Orients Teil B. Geschichte. VII. Die Ausbreitung des Islam bis zum ersten Kreuzzug (bis 1096) 1. Das islamische Arabien bis zum Tode des Propheten (632/11h) von Ulrich Rebstock.* Wiesbaden: Ludwig Reichert. 1987.

TCHERNOV E.

1994 *An early Neolithic village in the Jordan valley. Part II: the fauna of Netiv Hagdud.* (American Schools of Prehistoric Research Bulletin 44). Cambridge Mass.: Peabody Museum of Archaeology and Ethnology.

THALMANN J.-P.

1978 Tell 'Arqa (Akkar), campagne I-III, 1972-1974, chantier I, rapport préliminaire. *Syria* 55: 1-152.

THÉBAULT E., PURUCKER M., WHALER K.A., LANGLAIS B. ET ALII

2010 The Magnetic Field of the Earth's Lithosphere. *Space Science Reviews* 155/1-4: 95-127.

THILO U.

1958 *Die Ortsnamen in der altarabischen Poesie: Ein Beitrag zur vor- und frühislamischen Dichtung und zur historischen Topographie Nordarabiens* (Schriften der Max Freiherr von Oppenheim-Stiftung, 3). Wiesbaden: Harrassowitz.

THOULESS C.R., GRAINGER J.G., SHOBRACK M. & HABIBI K.

1991 Conservation status of gazelles in Saudi Arabia. *Biological Conservation* 58: 85-98.

[AL-]TIKRITI W.

2010 Heading North: An Ancient Caravan Route and the Impact of the Falaj System on the Iron Age Culture. In A. Avanzini (ed.) *Eastern Arabia in the First Millennium BC.* Rome: L'Erma di Bretschneider: 227-247.

TODISCO D. & MONCHOT H.

2008 Bone weathering in a periglacial context: the Tayara site (KbFk-7), Qikirtaq island, Nunavik (Canada). *Arctic* 61/1: 87-101.

TOMBER T.

2008 Appendix 2. Classical and Islamic pottery. In G. Barker, D. Gilbertson & D. Mattingly (eds.), *Archaeology and Desertification The Wadi Faynan Landscape Survey. Southern Jordan.* Oxford: Oxbow Books: 435-454.

TOSTEVIN G.B.

2011 Levels of Theory and Social Practice in the Reduction Sequence and *Chaîne Opératoire* Methods of Lithic Analysis. *PaleoAnthropology* 2011: 351-375 doi:10.4207/PA.2011.ART64.

- [AL-]‘UBŪDĪ M.  
 1979 *Bilād al-Qaṣīm (al-Mu‘jam al-jughrāfi li-l-Bilāl al-‘arabiyya al-sa‘ūdiyya)*. (Nuṣūṣ wa-abḥāth jughrāfiyya wa-ta’rīkhiyya ‘an Jazīrat al-‘Arab, 21). 6 vol. Riyadh: al-Yamāma.
- UERPMANN H.-P., POTTS D.T. & UERPMANN M.  
 2009 Holocene (re-)occupation of eastern Arabia. In M. Petraglia & J. Rose (eds.) *The Evolution of Human Populations in Arabia. Paleoenvironments, Prehistory and Genetics*. London: Springer: 205–214.
- UERPMANN M. & UERPMANN H.-P.  
 1997 Animal bones from excavation 519. In F. Højlund & H. Andersen (eds.), *Qala’at al-Bahreïn. The Central Monumental Buildings*. Moesgaard: Jutland Archaeological Society: 235–264.
- UERPMANN H.-P., UERPMANN M., KUTTERER A. & JASIM S.A.  
 2013 The Neolithic period in the Central Region of the Emirate of Sharjah (UAE). *Arabian Archaeology and Epigraphy* 24/1: 102–108.
- USIK V.I., ROSE J.I., HILBERT Y.H., VAN PEER P. ET AL.  
 2013 Nubian complex reduction strategies in Dhofar, southern Oman. *Quaternary International* 300: 244–266.
- VAN BEEK G.W., COLE G.H. & JAMME A.  
 1963 An archaeological reconnaissance in Hadramaut: a preliminary report. *Annual Report of the Smithsonian Institute* 1963: 521–545.
- VAN PEER P.  
 1992 *The Levallois Reduction Strategy* (Monographs in World Archaeology, 13), Madison: Prehistory Press.
- VAN PEER P., VERMEERSCH P. & PAULISSEN E.  
 2010 *Chert Quarrying, Lithic Technology and a Modern Human Burial at the Palaeolithic Site of Taramsa 1, Upper Egypt*. Leuven: Leuven University Press.
- VANDERHAAR J.M. & HWANG Y.T.  
 2003 *Mellivora capensis*. *Mammalian Species* 721: 1–8.
- VASLET D., [AL-]MUALLEM M.S., MADDAH S.S., BROSSE J.-M. ET AL.  
 1991 *Geologic Map of the Ar-Riyādh Quadrangle, Sheet 24 I, Kingdom of Saudi Arabia [1:250,000] & Explanatory Notes to the Geologic Map of the Ar-Riyādh Quadrangle, Sheet 24 I, Kingdom of Saudi Arabia*. Riyadh: Ministry of Petroleum and Mineral Resources.
- VERMEERSCH P., PAULISSEN E. & VAN PEER P.  
 1990 Palaeolithic chert exploitation in the limestone stretch of the Egyptian Nile Valley. *The African Archaeological Review* 8: 77–102.



- VIDAL F.S.  
1971 Al-Hufūf. In *Encyclopédie de l'Islam, deuxième édition*. Vol. III: 567–568.
- VINCENT P.  
2008 *Saudi Arabia: an environmental overview*, London – Leiden – New York: Taylor & Francis
- WAFI A.-M.  
1988 Les *mihrāb* et leurs ornements décoratives. In A. Papadopoulo (ed.), *Le Mihrāb dans l'architecture et la religion musulmanes*. Leiden – New York: Brill: 70–75.
- WAHIDA G., AL-TIKRITI W.Y. & BEECH M.  
2008 Barakah: a Middle Palaeolithic site in Abu Dhabi Emirate. *Proceedings of the Seminar for Arabian Studies* 38: 55–64.
- WENDORF F & SCHILD R.  
1974 *A Middle Stone Age Sequence from the Central Rift Valley, Ethiopia*. Warsaw: Polska Akademia Nauk.
- WHALEN N.M. & SCHATTEN K.E.  
1997 Pleistocene sites in southern Yemen. *Arabian Archaeology and Epigraphy* 8: 1–10.
- WHITCOMB D. & JOHNSON J.H.  
1982 *Quseir al-Qadim 1980: preliminary report*. (American Research center in Egypt, Preliminary reports, 7). Malibu: Undena Publications.
- WHITEHOUSE D.  
1968 Excavations at Siraf, Firth interim report. *Iran* 6: 1–22.  
1979 Islamic glazed pottery in Iraq and the Gulf: the ninth and tenth centuries. *Annali dell'Istituto Universitario Orientale di Napoli* 39: 45–61.
- WILMS T. & BÖHME W.  
2000 A new *Uromastyx* species from south-eastern Arabia, with comments on the taxonomy of *Uromastyx aegyptia* (Forskål, 1755). *Herpetozoa* 13/3–4: 133–148.  
2007 Review of the taxonomy of the spiny-tailed lizards of Arabia (Reptilia: Agamidae: *Lieilepidinae*: *Uromastyx*). *Fauna of Arabia* 23: 435–468.
- WILMS T., BÖHME W., WAGNER P., LUTZMANN N. & SCHMITZ A.  
2009 On the Phylogeny and Taxonomy of the Genus *Uromastyx* Merrem, 1820 (Reptilia: Squamata: Agamidae: Uromastycinae) – Resurrection of the Genus *Saara* Gray, 1845. *Bonner zoologische Beiträge* 56/1–2: 55–99.
- WILMS T., WAGNER P., SHOBRAK M., LUTZMANN N. & BÖHME W.  
2010 Aspects of the ecology of the Arabian spiny-tailed lizard (*Uromastyx aegyptia microlepis* Blanford, 1875) at Mahazat as-Sayd protected area, Saudi Arabia. *Salamandra* 46: 131–140.

WILSON J. & SA'D M.

- 1984 The Domestic material culture of Nabataean to Umayyad period Busrâ. *Berytus* 32: 35–147.

WÜSTENFELD F.

- 1874 *Bahrein und Jemâma. Nach arabischen Geographen beschrieben.* Göttingen: Dieterichschen Buchhandlung.

YĀQŪT SHIHĀB AL-DĪN ABĪ 'ABD ALLĀH B. 'ABDALLĀH AL-ĤAMAWĪ AL-RŪMĪ AL-BAGHDĀDĪ / ED. F. WÜSTENFELD  
1866–1873 [*Mu'jam*, text] = *Kitāb mu'jam al-buldān. Jacut's geographisches Wörterbuch, aus den Handschriften zu Berlin, St. Petersburg, Paris, London und Oxford, herausgegeben von Ferdinand Wüstenfeld.* 6. vol. (Deutsche Morgenländische Gesellschaft, in Commission bei F. A. Brockhaus). Leipzig: F.A. Brockhaus [Reed. 1924].

YELLEN J., BROOKS A., HELGREN D., TAPPEN M. *ET ALII*

- 2005 The archaeology of Aduma Middle Stone Age sites in the Awash Valley, Ethiopia. *Paleoanthropology* 10: 25–100.

YOM-TOV Y., MENDELSSHON H. & GROVES C.P.

- 1995 *Gazella dorcas.* *Mammalian Species* 491: 1–6.

[AL-]ZAHIRĀNĪ A., AL-MASHAIRI S., AL-NAFISA A., AL-YAHYA A. & AL-BASYUNI A.

- 2001 Preliminary Report on the Excavations of al-Ukhdoud, Najran. Second Season 1417 A.H. *Atlal* 16 (2001): 13–21 [engl.]/13–35 [ar.].

ZARINS J.

- 2001 *The Land of Incense: Archaeological work in the Governorate of Dhofar, Sultanate of Oman, 1990-1995.* Muscat: Sultan Qaboos University Publications.  
2013 Hailat Araka and the South Arabian Neolithic. *Arabian Archaeology and Epigraphy* 24/1: 109–117.

ZARINS J., IBRAHIM M., POTTS D.T. & EDENS CH.

- 1979 Saudi Arabian Archaeological Reconnaissance 1978. The preliminary report on the third phase of the Comprehensive Archaeological Survey Program – The Central Province. *Atlal* 3: 9–42.