



HAL
open science

Swimming depth of dolphinfish (*Coryphaena hippurus*) associated and unassociated with fish aggregating devices

Nicholas Whitney, Marc Taquet, Richard W. Brill, Charlotte Girard, Gail D.
Schwieterman, Laurent Dagorn, Kim N. Holland

► **To cite this version:**

Nicholas Whitney, Marc Taquet, Richard W. Brill, Charlotte Girard, Gail D. Schwieterman, et al..
Swimming depth of dolphinfish (*Coryphaena hippurus*) associated and unassociated with fish aggregating devices. *Fishery Bulletin*, 2016, 114 (4), pp.426 - 434. 10.7755/fb.114.4.5 . hal-01619036

HAL Id: hal-01619036

<https://hal.science/hal-01619036v1>

Submitted on 17 Jan 2024

HAL is a multi-disciplinary open access archive for the deposit and dissemination of scientific research documents, whether they are published or not. The documents may come from teaching and research institutions in France or abroad, or from public or private research centers.

L'archive ouverte pluridisciplinaire **HAL**, est destinée au dépôt et à la diffusion de documents scientifiques de niveau recherche, publiés ou non, émanant des établissements d'enseignement et de recherche français ou étrangers, des laboratoires publics ou privés.



Abstract—Dolphinfish (*Coryphaena hippurus*), large pelagic predators and important fishery targets, frequently associate with floating debris or manmade fish aggregating devices (FADs). We tagged 8 dolphinfish with pressure-sensitive ultrasonic transmitters and actively tracked individuals continuously for up to 40 h to elucidate the vertical movement patterns and differences between FAD-associated (FAD-A) and FAD-unassociated (FAD-U) fish. Four additional fish were equipped with acoustic transmitters and passively monitored for several days with receivers attached to FADs. When not associated with FADs, dolphinfish used the upper 75–100 m of the water column during the day and made descents up to 160 m during the night. In contrast, FAD-A fish generally stayed within the upper 10 m of the water column and tended to make deeper excursions during the day rather than at night. Water temperature data from expendable bathythermographs deployed during active tracking showed that fish only descended to depths where temperatures were $\leq 3^{\circ}\text{C}$ cooler than the uniform-temperature surface layer. The use of vertical behavior to determine whether a dolphinfish is associated or not with a floating object opens the possibility for new, large-scale research aimed at investigating the role of floating objects in the ecosystem inhabited by this species and at assessing the impacts of FADs on its ecology.

Manuscript submitted 2 June 2015.
Manuscript accepted: 14 July 2016.
Fish. Bull.: 426–434 (2016).
Online publication date: 8 August 2016.
doi: 10.7755/FB.114.4.5

The views and opinions expressed or implied in this article are those of the author (or authors) and do not necessarily reflect the position of the National Marine Fisheries Service, NOAA.

Swimming depth of dolphinfish (*Coryphaena hippurus*) associated and unassociated with fish aggregating devices

Nicholas M. Whitney (contact author)¹
Marc Taquet²
Richard W. Brill³
Charlotte Girard⁴

Gail D. Schwieterman¹
Laurent Dagorn⁴
Kim N. Holland⁵

Email address for contact author: nwhitney@mote.org

¹ Behavioral Ecology and Physiology Program
Mote Marine Laboratory
1600 Ken Thompson Parkway
Sarasota, Florida 34236

² Unités Mixtes de Recherche (UMR)
Ecosystèmes Insulaires Océaniques (EIO)
Institut de Recherche pour le Développement
BP 529
98713 Papeete, Tahiti, Polynésie française

³ Pacific Islands Fisheries Science Center
National Marine Fisheries Service, NOAA
2570 Dole Street
Honolulu, Hawaii 96822-2396

⁴ Unités Mixtes de Recherche (UMR) Marine
Biodiversity, Exploitation, and
Conservation (MARBEC)
Institut de Recherche pour le Développement
Avenue Jean Monnet CS 30171
34203 Sète Cedex, France

⁵ Hawaii Institute of Marine Biology
University of Hawaii at Manoa
P.O. Box 1346
Kaneohe, Hawaii 96744

Dolphinfish (*Coryphaena hippurus*) are large pelagic fish that are common globally in tropical and warm temperate seas (Palko et al., 1982). They have diverse diets composed of floating debris-associated organisms, such as portunids (crabs) and epipelagic cephalopods (Olson and Galván-Magaña, 2002; Rudershausen et al., 2010), as well as neritic and demersal fish (Tripp-Valdez et al., 2010). The fast growth rate (Schwenke and Buckle, 2008; Furukawa et al., 2012), early sexual maturity (less than one year; Trippel, 1995; Furukawa et al., 2012), and high food value (Beardsley, 1967; Rodríguez-Ferrer et al., 2004) of this species makes it an increasingly important target of commercial, sport, and artisanal fisheries (Rodríguez-Ferrer et al., 2004). The tendency of dolphinfish to aggregate around floating objects and flora, such as sargassum (Oxenford, 1999; Rooker et al.,

2006; Casazza and Ross, 2008; Farrell et al., 2014; Merten et al., 2014a), logs (Baughman, 1941), and manmade fish aggregating devices (FADs; Rose and Hassler, 1974; Massutí et al., 1998; Oxenford and Hunte, 1999; Dempster, 2004; Dagorn et al., 2007; Taquet et al., 2007), facilitates their exploitation by both commercial and recreational fisheries throughout the world.

Recent estimates put annual catch of dolphinfish at more than 102,986 metric tons (t) (FAO, 2013), which excludes unreported bycatch (common in longline tuna fisheries) and underreported artisanal landings. A recent study estimated that 5382 t of illegal or unreported dolphinfish were imported from Ecuador to the United States in 2011 alone (Pramod et al., 2014). The high exploitation rate and commercial importance of this species justify a better foundational knowledge of the life history and behavioral

Table 1

Characteristics of the tracking or monitoring of dolphinfish, including which method was used: active (boat-based) or passive (receiver attached to a fish aggregating device [FAD]). Behavior categories are day (D) or night (N) and either FAD-unassociated (U) or FAD-associated (A). FAD types (drifting or anchored) are listed only for animals that were actually associated with a FAD for a part of the time they were tracked.

Method	Fish	Fork length (cm)	Tracking start date	Duration of tracking (h)	Behavior category	FAD type	Location
Active	1	125	4-Mar-86	40.1	DU/NU		Hawaii
	2	108	3-Feb-87	6.0	DU		Hawaii
	3	103	7-Mar-87	22.5	DU/NU		Hawaii
	4	104	24-Mar-87	27.2	DU/NA	drifting	Hawaii
	5	116	21-Jul-03	8.0	DA	anchored	Réunion Is.
	6	124	6-Aug-03	8.0	DU		Réunion Is.
	7	58	12-Apr-05	4.3	DU ¹		Seychelles
	8	69	21-Apr-05	7.5	DU ¹		Seychelles
Passive	9	110	13-Dec-01	38.4	DA/NA	drifting	S. Indian
	10	77	12-Oct-03	81.6	DA/NA	drifting	S. Indian
	11	86	8-Feb-04	87.8	DA/NA	drifting	Seychelles
	12	102	16-Oct-04	84.5	DA/NA	drifting	Seychelles

¹Fish tracked in shallow areas (depths of 50–60 m) were not included in statistical analyses.

patterns of dolphinfish in order to ensure development of appropriate measures for fishery management and resource conservation.

Previous studies of the movements of dolphinfish have focused either on broadscale migrations or on movements in highly specific contexts. For example, Merten et al. (2014a) used mark-recapture data to describe broadscale migrations along the East Coast of the United States, from the Florida Keys to Long Island, New York. Merten et al. (2014b) used plastic dart tags and pop-off satellite tags to determine regional patterns of horizontal movement, and Norton (1999) described a global poleward shift of dolphinfish that corresponded with an increase in ocean temperatures.

Individual dolphinfish have been shown to home to a specific moored FAD (Girard et al., 2007) and to remain associated with an anchored FAD for a mean duration of 3.98 days (Dagorn et al., 2007) and with drifting FADs for a mean duration of 6.25 days (Taquet et al., 2007). Dolphinfish in the western Atlantic generally maintain swimming depths in the uniform-temperature surface layer and descend beyond the surface layer (0–10 m) longer at night than during the day, possibly to forage (Merten et al., 2014c). FAD-U fish in the northern East China Sea often remain above the thermocline (Furukawa et al., 2011), although Merten et al. (2014c) found that the thermocline was not a barrier to vertical movements for dolphinfish in the Atlantic. In general, dolphinfish have the shallowest vertical distribution of other sympatric, mid-trophic level predators, such as the striped marlin (*Kajikia audax*; Brill et al., 1993) and sailfish (*Istiophorus platypterus*; Hoolihan, 2005).

To date, the movement patterns between FAD-A and FAD-U dolphinfish have not been compared. We ana-

lyzed the vertical swimming behavior of both FAD-A and FAD-U dolphinfish, tracked by using active and passive telemetry, with particular regard to diurnal patterns. Understanding the vertical movement patterns of this commercially important species is increasingly essential for sustainable fisheries management, especially in the face of climate change. The use of a comprehensive ethology will enable managers to predict changes in distribution of dolphinfish as seawaters warm and to implement bycatch reduction regulations, such as a mandate that would limit the depths at which gear can be set to depths outside the range preferred by dolphinfish.

Materials and methods

Study sites

A total of 12 dolphinfish were tagged and released at locations 1) in the central Pacific (near the main Hawaiian Islands, $n=4$) in 1986 and 1987, 2) in the southwestern Indian Ocean (near Réunion Island; $n=4$) in 2005, and 3) in the Western Indian Ocean (near Seychelles, $n=4$) in 2003 (Table 1). In the central Pacific, active tracking of 4 fish was conducted off the northeast (windward) coast of Oahu near an array of FADs that consisted of surface buoys anchored at depths from 670 to 3660 m. The tracks of 4 more fish were recorded with active telemetry around FADs made of about 10 surface buoys, a metal cable, and strap bands located on the cable at a depth of ~20 m, anchored with concrete blocks on the Seychelles Plateau in relatively shallow (50–60 m) water or around drifting FADs of similar construction. In the open sea off Réunion Island, 2 fish were passively monitored in

depths of 2000–5000 m, one fish in 2001 and another in 2003, by using drifting FADs, made of bamboo rafts with trailing netting panels, that were deployed specifically to study pelagic fish aggregations (Taquet, 2004). Off the Seychelles Plateau in 2004, 2 more fish were passively monitored near FADs made of surface buoys anchored at depths of 500–1500 m (Girard et al., 2007). Fish from all locations were caught by trolling and pole techniques and were brought aboard the vessel for tagging.

Active telemetry

A detailed account of the tracking methods employed in Hawaii are described in Holland et al. (1985), and those used off Réunion Island and in the Seychelles are detailed in Girard et al. (2007). In Hawaii, pressure-sensitive V16 ultrasonic transmitters (16.0 mm in diameter, 27.7 g in air and 11.7 g in seawater; Vemco Inc.¹, Bedford, Nova Scotia, Canada) were attached externally to a fish by passing 2 nylon cable ties through the dorsal or ventral pterygiophores and trunk musculature adjacent to the second dorsal fin (we switched to the latter procedure after one fish was observed swimming at the surface with its dorsal tag carried above the surface of the water). The transmitters were equipped with pressure sensors that modulated the rate of pulses transmitted in response to changes in water pressure (depth). Therefore, vertical movements of the fish were determined by measuring the time between signal pulses (e.g., Holland et al., 1990b). Individuals were held out of the water for approximately 1 min during the tagging procedure. For tracking, we used a 12V DC amplifier and receivers (CR-40, Vemco Inc.) and a directional hydrophone (Vemco Inc.), which was mounted to a pole extending about 1.5 m below the surface. Attempts were made to keep the tracking vessel 200 m away from the tagged individual to maintain maximum signal amplitude and not disturb natural behavior.

The fish actively tracked off Réunion Island were caught at FADs and held in a container of flowing seawater, and the fish caught in the Seychelles were placed in a padded cradle for a few minutes and provided with flow of water to oxygenate their gills. Fish tracked in the Seychelles and off Réunion Island were moved distances of 70–1720 m from the FAD during tagging, as part of a study on dolphinfish homing abilities around FADs (Girard et al., 2007). For fish tracked in these 2 areas, V16P-4H transmitters (16.0 mm in diameter, 25 g in air and 11 g in seawater, with a random delay between 40 and 120 s, depth resolutions from 0.3 to 1.5 m; Vemco Inc.) were attached by means of a hook that passed through the pterygiophores of the anal fin. Four hydrophones were towed below the tracking vessel on a V-fin depressor, and the signal emitted by a tag was processed with a VR28 receiver system (Vemco Inc.) connected to a laptop computer to record the data that were

automatically stored in the receiver. Whenever possible, a distance of at least 100 m was maintained between the tagged fish and the boat to reduce the effect of the tracking vessel on fish behavior.

During active tracking, data for seawater temperature were acquired through periodic deployments of an expendable bathythermograph system (Lockheed Martin Sippican, Marion, MA.). We defined association with a FAD as a fish remaining within 360–655 m of a FAD or floating debris for at least 30 min, as determined by direct observation.

Passive telemetry

Fish were passively monitored with V13P-1H acoustic transmitters that would transmit on a random delay of 40–120 s (fish 9, 11, and 12; 13 mm in diameter, 11 g in air and 6 g in seawater; Vemco Inc.). Tags were inserted into the peritoneal cavity through an incision of 1–2 cm made to the side of the ventral centerline of the fish and 2–3 cm anterior to the cloaca. The wound was closed by using sterile needles and suture material; the entire procedure was completed in less than 3 min. Fish 10 was equipped with a V16P-4H acoustic transmitter on a delay of 10–30 s (18 mm in diameter, 36 g in air and 16 g in seawater; Vemco Inc.) attached above their anal fin with a hook. To monitor tagged fish around FADs, VR2 receivers (Vemco Inc.) were suspended 5 m below a buoy that was tied to the FAD. Following Girard et al. (2007), we defined association of passively monitored fish as fish remaining within the detection range of the transmitters on the FAD (distances of 360 and 655 m for V13P-4H and V16P-4H receivers, respectively). After a few days of observation, VR2 receivers were removed from the FADs so that data could be downloaded.

Analyses

Pooled time-at-depth histograms were constructed with 5- or 10-m bins as described by Holland et al. (1990b). These data subsequently were expressed as a fraction of the total time each fish was followed, and the fractional data bins were averaged across all fish. Fish 7 and 8 were excluded from statistical analyses because their vertical movements were limited by a bottom depth of 50–60 m. A linear mixed-effects model was used to examine the effects of time of day and FAD association on swimming depth. Our model included fixed effects for tagging method, FAD association (associated or unassociated), and time of day (day or night). Additionally, individual fish and location of study site were random effects because it was not our aim to study intraspecific variability or differences that resulted from study site. Our model did not include interaction terms. Models were run with the *lmer* function in the *lme4* package (Bates et al., 2014) in R, vers. 2.15.3 (R Core Team, 2013). The candidate model was selected by using the Akaike information criterion, with factor significance determined by pairwise analysis of variance (ANOVA) tests ($\alpha=0.05$). *P*-values for pairwise comparisons were computed by using

¹ Mention of trade names or commercial companies is for identification purposes only and does not imply endorsement by the National Marine Fisheries Service, NOAA.

Markov chain Monte Carlo methods from the LMERConvenienceFunction package (Tremblay and Ransijn, 2013) in R.

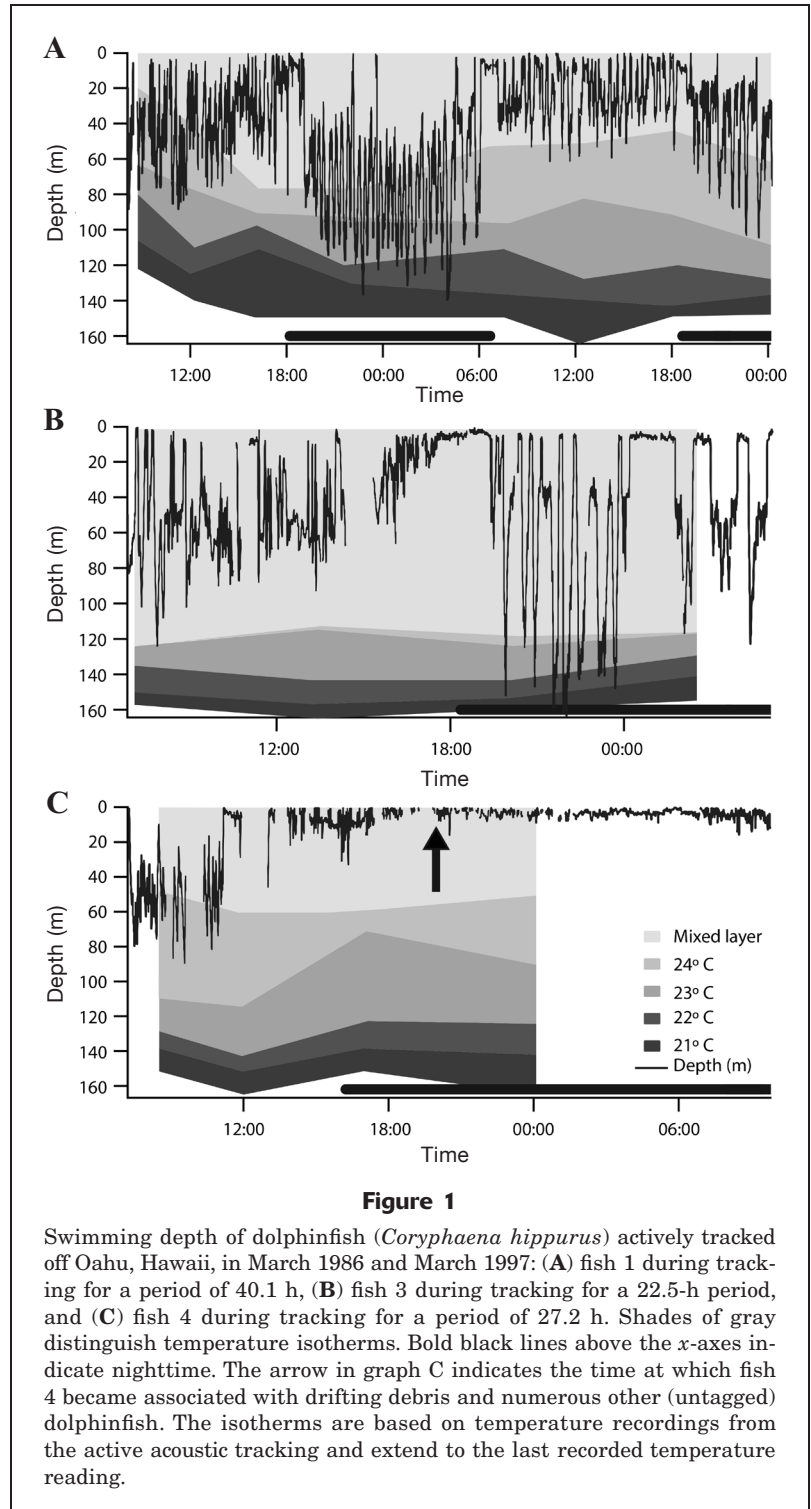
Results

A total of 8 dolphinfish (mean fork length: 100.9 cm [standard deviation (SD) 24.7]) were actively tracked, and 4 fish (mean fork length: 93.8 cm [SD 15.0]) were monitored with passive acoustic receivers (Table 1). The duration of active tracking of individual fish ($n=8$) ranged from 4.3 to 40.1 h (mean duration of tracking: 15.5 h). Actively tracked fish were unassociated with FADs for the majority of the time that they were tracked, with the exception of fish 4 and 5 (Table 1). Passively monitored fish ($n=4$), and therefore FAD-A fish, were monitored for periods of 38.4–87.8 h (mean duration of tracking: 73.1 h).

Four dolphinfish (fish 5, 6, 9, and 11) immediately after release made quick descents that lasted less than 1 h before they resumed shallower swimming behavior for the remainder of the time that they were tracked. No other response to tagging was observed.

Our analysis revealed that study location and monitoring method did not have a significant effect on swimming depth (variance approached 0 for both effects ($P>0.05$), and these effects were removed from the model. We did not find significant interaction between time of day (day or night) and FAD association (associated or unassociated) (ANOVA: $P>0.05$); therefore, we present values from a reduced model in which depth was dependent on the fixed effects of time of day and FAD association, with individual (fish) as a random effect. We found mean daytime depth of FAD-A fish to be 1.8 m (SD 8.1), mean nighttime depth of FAD-A fish to be 0.8 m (SD 1.7), mean daytime depth of FAD-U fish to be 49.5 m (SD 0.3), and mean nighttime depth of FAD-U fish to be 28.3 m (SD 2.9).

During the day when not associated with FADs or floating debris, dolphinfish remained within the uniform-temperature surface layer (above the thermocline) and made only limited vertical excursions to depths of 75–100 m. At night, FAD-U fish swam at depths between 30 and 160 m and ventured into cooler water. However, fish reached depths that were no more than 3°C cooler than the uniform-temperature surface layer (Fig. 1). Although FAD-U fish spent an average of 29.4% of their time in the upper 10 m of the water column during both day and night, there was



another peak of time-at-depth at depths between 30 and 40 m, their overall depth distribution during nighttime was broader and deeper than their daytime distribution ($P<0.001$; Fig. 2).

When associated with FADs or floating debris, dolphinfish spent an average of 94.8% of their time in the

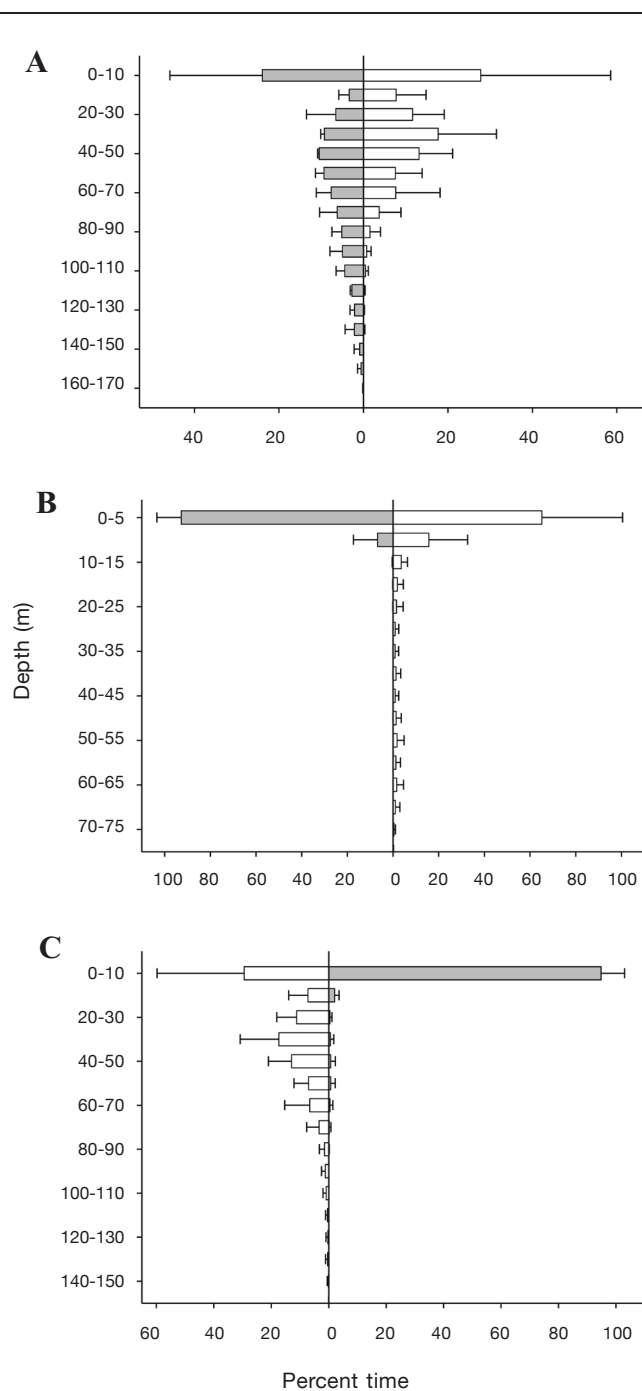


Figure 2

Percent time at depth (A) for all dolphinfish (*Coryphaena hippurus*) unassociated with a fish aggregating device (FAD) during day (white bars: $n=7$) and night (gray bars: $n=2$), (B) for FAD-associated fish during day (white bars: $n=5$) and night (gray bars: $n=5$), and (C) for fish unassociated with FADs (white bars: $n=7$) and fish associated with FADs (gray bars: $n=6$). Sample sizes differ because not all individuals were actively tracked or monitored during full 24-h cycles (see Table 1.). Dolphinfish were actively tracked in Hawaii, Reunion Island, and the Seychelles Plateau between 1986 and 2005 and were passively monitored in the Seychelles Plateau and the Indian Ocean between 2001 and 2004.

upper 10 m of the water column. During the night, fish typically remained within 5 m of the surface, venturing into depths that were only slightly deeper during the day (Fig 3); this difference was not significant. Only 1 fish (fish 11) exceeded a depth of 30 m while associated with a FAD (Fig 3). Fish 4 became associated with an abandoned net and other drifting debris while being tracked (Fig. 1). It swam at depths between 25 and 75 m for the first 4 h after it was tagged and while it was unassociated with a FAD or debris. After becoming associated with floating debris, this fish remained within the upper 20 m of the water column for the final 17 h that it was tracked, and it did not have the deeper nighttime swimming behavior observed in FAD-U fish. These results from active telemetry were confirmed by direct observations of the tagged fish near the surface on several occasions.

By the end of the active tracking of fish 4, approximately 300 dolphinfish, a large school of small yellowfin tuna (*Thunnus albacares*), and at least 1 marlin (*Istiophoridae*) were observed to also be associated with debris. No fish were observed to leave a FAD once it became associated with one, and passive monitoring ended when tracked fish were recaptured or the receivers were retrieved. At the end of its passive monitoring, fish 11 showed a rapid descent to more than 200 m and then exceeded the range of the receiver (not shown in Fig. 3), likely as a result of shedding its tag or possibly mortality.

Actively tracked fish 1 and 3, which were unassociated with floating objects during crepuscular periods, interrupted their vertical movement patterns and remained within the upper 10 m of the water column for several minutes during the dawn or dusk periods ($n=4$). These shallow periods lasted from 39 to 169 min.

Discussion

We present a first examination of the effect of FAD association on diel movement patterns of dolphinfish. Overall, individuals remained in the uniform-temperature surface layer in congruence with results of other studies on tracking dolphinfish (Furukawa et al., 2011, 2014; Merten et al., 2014c), as well as with results from studies on tracking wahoo (*Acanthocybium solandri*; Sepulveda et al., 2011) and sailfish (Chiang et al., 2011). However, we found differences in the vertical movement patterns between FAD-A fish and FAD-U fish. The distributions of the former were extremely shallow, with deeper excursions observed during the day. In contrast, the latter ranged throughout the upper 100 m of the water column and made deeper descents at night. The differences in behavior of FAD-A and FAD-U fish can

be noted particularly in the behavior of fish 4, which became associated partway through the period in which it was actively tracked (Fig. 1). These results are similar to those from studies of bigeye tuna (*Thunnus obesus*): deeper diving occurred when fish were not associated with surface objects and shallow distribution was generally uniform during day and night when fish were associated with surface objects (Holland et al., 1990b; Musyl et al., 2003).

The difference in depth distribution between FAD-A and FAD-U dolphinfish may be due to differences in feeding strategy. Although Taquet (2004) found that only 27% of the diet of FAD-A dolphinfish comes from FAD-associated organisms, dolphinfish are primarily visual predators (Massuti et al., 1998) and would be expected to forage primarily during the daytime. For FAD-A fish, deeper daytime dives may represent attempts to forage for prey species distributed throughout the uniform-temperature surface layer. If this is the case, the motivation to make deeper descents would be lessened at night because reduced light levels make foraging difficult.

The broad patterns of vertical movement that we observed in FAD-U dolphinfish are similar to the behaviors observed in other large pelagic fishes, such as tropical tunas and marlin, unassociated with a FAD or debris (e.g., Holland et al., 1990a, 1990b; Brill et al., 1993; Musyl et al., 2003). Such movement patterns may allow fish to explore the water column for prey. During the day, FAD-U dolphinfish may target prey that occupy the uniform-temperature surface layer—prey species that likely are not part of the deep scattering layer. However, at night, dolphinfish may forage on prey of the deep scattering layer that rise to occupy the uniform-temperature surface layer. Although we did not observe the dissociation of any fish from a FAD, Taquet et al. (2007) suggested the need to forage may prompt dolphinfish to leave FADs or other floating objects.

The rapid, deep descents of 4 fish immediately after release were likely a response to tagging because these fish quickly resumed vertical movement patterns that were maintained for extended periods and, therefore, presumably represent natural behavior (Girard et al., 2007). The remaining 8 individuals showed no such initial response. Hoolihan et al. (2011) suggested that stress from capture and handling affects the behavior of large pelagic fishes for periods that span from days to weeks after release. However, a comparison of vertical movement behaviors from our study with those from other acoustic telemetry studies (with tracking conducted for ~24-48 h after release) and with those from studies that employ im-

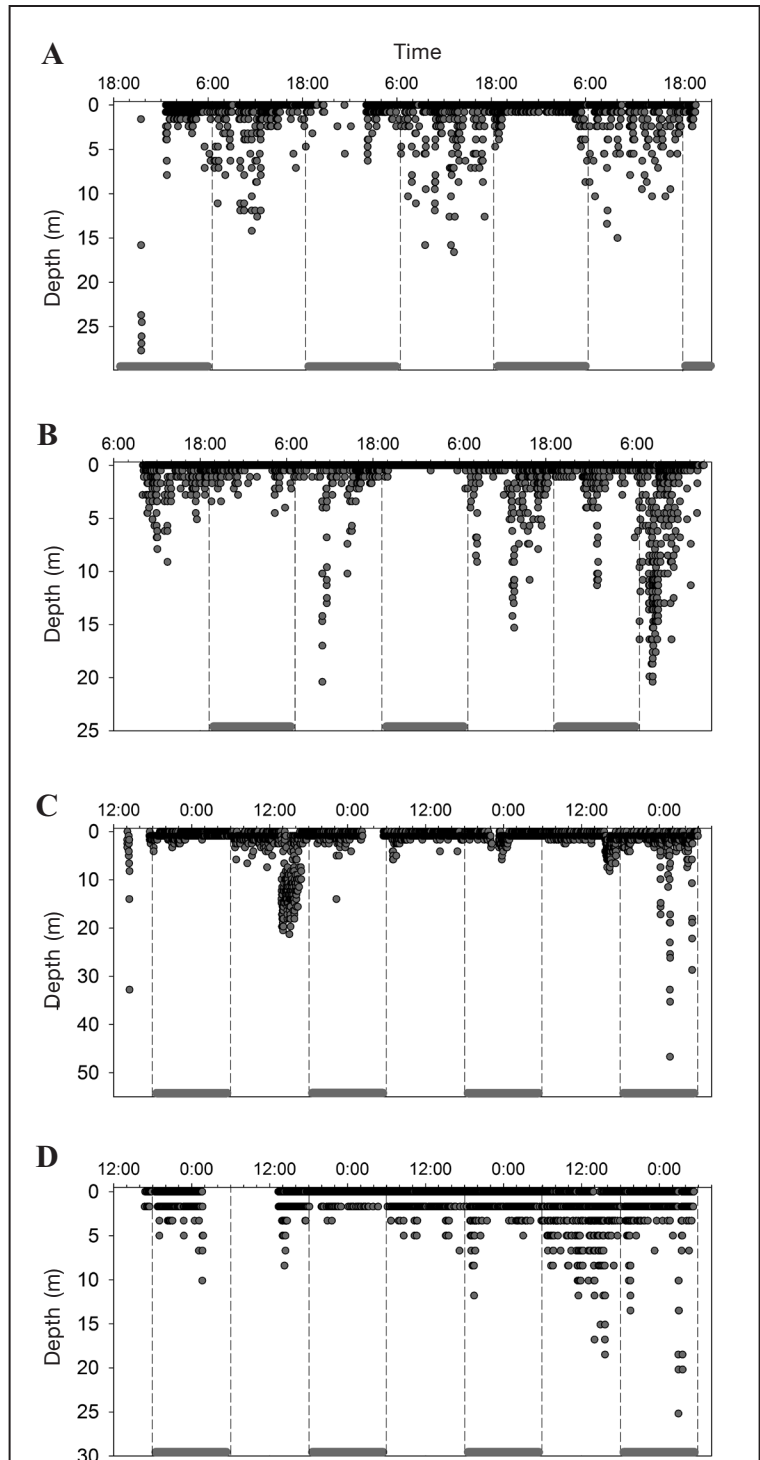


Figure 3

Swimming depths of 4 dolphinfish (*Coryphaena hippurus*) associated with a fish aggregating device and monitored passively with V13P-1H or V16-4H transmitters over periods of several days in the open sea in the southwestern Indian Ocean or near the Seychelles Plateau. (A–C) Fish 9, 11, and 12 were tracked in 2001 and 2004. (D) Fish 10 was tracked in 2003. Individual dots represent detections by the acoustic receiver. Bold gray lines above the x-axes indicate nighttime.

planted archival tags and pop-up satellite archival tags (with tags often containing months long data records) showed remarkable similarity and indicates that 1) recovery after release for pelagic teleosts, such as tunas and billfishes, requires only 2–6 h (Holland et al., 1990a, 1990b; Brill et al., 1993) and 2) differences in vertical movement patterns can be explained largely by differences in oceanographic conditions and prey distributions (e.g., Dewar et al., 2011; Schaefer et al., 2007, 2011).

We observed 2 fish that interrupted their regular patterns of vertical movement during crepuscular periods to remain instead in the upper 10 m of the water column. These shallow periods may enhance the ability of fish to use sunrise and sunset as zeitgebers to entrain a circadian clock (Aschoff, 1965; Takahashi and Zatz, 1982; Neilson and Perry, 1990) or may represent optimal times for feeding on shallow-water prey, such as flying fish, a main portion of the diet of dolphinfish (Olson and Galván-Magaña, 2002). Merten et al. (2014c) also posited that dawn and dusk were periods of transition that represent the end and start, respectively, to more extensive vertical movements. Bluefin tuna (*Thunnus thynnus*) have been observed to occasionally interrupt their regular day or night dive behavior at crepuscular periods (Gunn and Block, 2001). However, rather than remaining at shallow depths, these fish make “spike dives” that may have a navigational role through the detection of polarized light patterns or magnetic anomalies (Willis et al., 2009).

The results presented here should be examined further in future studies. Because of resource constraints, our sample size is relatively small and does not encompass different life stages. Although location was determined to be an insignificant factor in our model, there may be differences between populations that were undetectable here. To help determine how vulnerable dolphinfish are to fishing pressure, more work is needed to investigate the original drivers behind FAD association if they are not a source of prey and to determine sexual or life-stage preference for FAD associations. Further studies may incorporate the use of accelerometry (e.g., Furukawa et al., 2011) or further vertical movement profiles from time series data (e.g., Merten et al., 2014c) in order to further elucidate proximate drivers of the difference in behavior between FAD-A and FAD-U fish that was observed in our study.

Our results show that, as with results reported for bigeye tuna (Holland et al., 1990b, Schaefer and Fuller, 2005, 2010), it may be possible to use information on vertical behavior to assess when an individual dolphinfish is associated with a floating object. Combined with the long-term data-recording capabilities of archival tag studies (Gunn and Block, 2001), information on the impact of FAD association on swimming depth could help elucidate the dependence of dolphinfish on floating objects. This information is key in assessing the effects of fisheries on populations of dolphinfish given the increasing use of FADs by the purse-seine fisheries that target tunas and given the substantial bycatch of dolphinfish (Dagorn et al., 2013, Fonteneau et al., 2013, Leroy et al.,

2013). The findings presented here regarding the vertical distributions of FAD-A and FAD-U dolphinfish may help to develop sustainable fishing techniques and management regulations of FAD-based fisheries.

Acknowledgments

Tagging in the Indian Ocean was cofunded by the European Union Fish Aggregating Devices as Instrumental Observatories of pelagic ecosystems (FADIO) project (DG Research, QLRI-CT-2002-02773) and the European Union Dynamique et Organisation des Ressources Associées aux Dispositifs Epipelagiques (DO-RADE) project (DIRED-Ifremer No. 31008/DIRED/JPP/rp), with additional support from the Regional Council of Reunion Island. We are grateful to the crews of the MV *Indian Ocean Explorer* and FV *Cap Morgan*, to the French and Spanish skippers of the purse-seine fishing fleet in the Indian Ocean for their collaboration, and to C. White for analytical advice. C. Girard benefited from a grant provided by the Région Réunion.

Literature cited

- Aschoff, J.
1965. The phase-angle difference in circadian periodicity. In *Circadian clocks* (J. Aschoff, ed.), p. 262–278. North Holland Press, Amsterdam.
- Bates, D., M. Mächler, B. M. Bolker, and S. C. Walker.
2015. Fitting linear mixed-effects models using lme4. *J. Stat. Softw.* 67(1):1–47. [Article](#)
- Baughman, J. L.
1941. On a heavy run of dolphin, *Coryphaena hippurus*, off the Texas coast. *Copeia* 1941:117. [Article](#)
- Beardsley, G. L., Jr.
1967. Age, growth and reproduction of dolphin, *Coryphaena hippurus*, in the Straits of Florida. *Copeia* 1967:441–451. [Article](#)
- Boggs, C. H.
1992. Depth, capture time, and hooked longevity of longline-caught pelagic fish: timing bites of fish with chips. *Fish. Bull.* 90:642–658.
- Brill, R. W., D. B. Holts, R. K. C. Chang, S. Sullivan, H. Dewar, and F. G. Carey.
1993. Vertical and horizontal movements of striped marlin (*Tetrapturus audax*) near the Hawaiian Islands, determined by ultrasonic telemetry, with simultaneous measurement of ocean currents. *Mar. Biol.* 117:567–574. [Article](#)
- Casazza, T. L., and S. W. Ross.
2008. Fishes associated with pelagic *Sargassum* and open water lacking *Sargassum* in the Gulf Stream off North Carolina. *Fish. Bull.* 106:348–363.
- Chiang, W.-C., M. K. Muysl, C.-L. Sun, S.-Y. Chen S. Y., W.-Y. Chen, D.-C. Liu, W.-C. Su, S.-Z. Yeh, S.-C. Fu, and T. L. Huang.
2011. Vertical and horizontal movements of sailfish (*Isiophorus platypterus*) near Taiwan determined using pop-up satellite tags. *J. Exp. Mar. Biol. Ecol.* 387:129–135. [Article](#)
- Dagorn, L., D. Pincock D., C. Girard, K. Holland, M. Taquet, G. Sancho G., D. Itano, and R. Aumeeruddy.
2007. Satellite-linked acoustic receivers to observe behav-

- ior of fish in remote areas. *Aquat. Living Resour.* 20:307–312. [Article](#)
- Dagorn, L., K. N. Holland, V. Restrepo, and G. Moreno.
2013. Is it good or bad to fish with FADs? What are the real impacts of the use of drifting FADs on pelagic marine ecosystems? *Fish Fish.* 14:391–415. [Article](#)
- Dempster, T., and M. Taquet.
2004. Fish aggregation device (FAD) research: gaps in current knowledge and future directions for ecological studies. *Rev. Fish Biol. Fish.* 14:21–42. [Article](#)
- Dewar, H., E. D. Prince, M. K. Muysl, R. W. Brill, C. Sepulveda, J. Luo, D. Foley, E. S. Orbesen, M. L. Domeier, N. Nasby-Lucas, et al.
2011. Movements and behaviors of swordfish in the Atlantic and Pacific Oceans examined using pop-up satellite archival tags. *Fish. Oceanogr.* 20:219–241. [Article](#)
- FAO (Food and Agriculture Organization of the United Nations).
2013. Species fact sheets: *Coryphaena hippurus* (Linnaeus, 1758). FAO, Rome. [Available at [website](#), accessed March 2015.]
- Farrell, E. R., A. M. Boustany, P. N. Halpin, and D. L. Hammond.
2014. Dolphinfin (*Coryphaena hippurus*) distribution in relation to biophysical ocean conditions in the northwest Atlantic. *Fish. Res.* 151:177–190. [Article](#)
- Fonteneau, A., E. Chassot, and N. Bodin.
2013. Global spatio-temporal patterns in tropical tuna purse seine fisheries on drifting fish aggregating devices (DFADs): taking a historical perspective to inform current challenges. *Aquat. Living Resour.* 26:37–48. [Article](#)
- Furukawa, S., R. Kawabe, S. Ohshimo, K. Fujioka, G. N. Nishihara, Y. Tsuda, T. Aoshima, H. Kanehara H., and H. Nakata.
2011. Vertical movement of dolphinfin *Coryphaena hippurus* as recorded by acceleration data-loggers in the northern East China Sea. *Environ. Biol. Fish.* 92:89–99. [Article](#)
- Furukawa, S., S. Ohshimo, S. Tomoe, T. Shiraiishi, N. Nakatsuka, and R. Kawabe.
2012. Age, growth, and reproductive characteristics of dolphinfin *Coryphaena hippurus* in the waters off west Kyushu, northern East China Sea. *Fish. Sci.* 78:1153–1162. [Article](#)
- Furukawa, S., Y. Tsuda, G. N. Nishihara, K. Fujioka, S. Ohshimo, S. Tomoe, N. Nakatsuka, H. Kimura, T. Aoshima, H. Kanehara, et al.
2014. Vertical movements of Pacific bluefin tuna (*Thunnus orientalis*) and dolphinfin (*Coryphaena hippurus*) relative to the thermocline in the northern East China Sea. *Fish. Res.* 149:86–91. [Article](#)
- Girard, C., L. Dagorn, M. Taquet, R. Aumeeruddy, C. Peignon, and S. Benhamou.
2007. Homing abilities of dolphinfin (*Coryphaena hippurus*) displaced from fish aggregating devices (FADs) determined using ultrasonic telemetry. *Aquat. Living Resour.* 20:313–321. [Article](#)
- Gunn, J. S., and B. Block.
2001. Advances in acoustic, archival, and satellite tagging of tunas. *Fish. Physiol.* 19:167–224. [Article](#)
- Holland, K., R. Brill, S. Ferguson, R. Chang, and R. Yost.
1985. A small vessel technique for tracking pelagic fish. *Mar. Fish. Rev.* 47:26–32.
- Holland, K. N., R. W. Brill, and R. K. C. Chang.
1990a. Horizontal and vertical movements of Pacific blue marlin captured and released using sportfishing gear. *Fish. Bull.* 88:397–402.
- 1990b. Horizontal and vertical movements of yellowfin and bigeye tuna associated with fish aggregation devices. *Fish. Bull.* 88:493–507.
- Hoolihan, J. P.
2005. Horizontal and vertical movements of sailfish (*Isi tiophorus platypterus*) in the Arabian Gulf, determined by ultrasonic and pop-up satellite tagging. *Mar. Biol.* 146:1015–1029. [Article](#)
- Hoolihan, J. P., J. Luo, F. J. Abascal, S. E. Campana, G. De Metrio, H. Dewar, M. L. Domeier, L. A. Howey, M. E. Lutcavage, M. K. Musyl et al.
2011. Evaluating post-release behaviour modification in large pelagic fish deployed with pop-up satellite archival tags. *ICES J. Mar. Sci.* 68:880–889. [Article](#)
- Leroy, B., J. S. Phillips, S. Nicol, G. M. Pilling, S. Harley, D. Bromhead, S. Hoyle, S. Caillot, V. Allain, and J. Hampton.
2013. A critique of the ecosystem impacts of drifting and anchored FADs use by purse-seine tuna fisheries in the western and central Pacific Ocean. *Aquat. Living Resour.* 26:49–61. [Article](#)
- Massuti, E., Deudero S., Sanchez P., and Morales-Nin B.
1998. Diet and feeding of dolphin (*Coryphaena hippurus*) in western Mediterranean waters. *Bull. Mar. Sci.* 63:329–341.
- Merten, W., R. Appeldoorn, and D. Hammond.
2014a. Movements of dolphinfin (*Coryphaena hippurus*) along the U.S. East Coast as determined through mark and recapture data. *Fish. Res.* 151:114. [Article](#)
- 2014b. Spatial differentiation of dolphinfin (*Coryphaena hippurus*) movements relative to the Bahamian archipelago. *Bull. Mar. Sci.* 90:849–864.
- Merten, W., R. Appeldoorn, R. Rivera, and D. Hammond.
2014c. Diel vertical movements of adult male dolphinfin (*Coryphaena hippurus*) in the western central Atlantic as determined by use of pop-up satellite archival transmitters. *Mar. Biol.* 161:1823–1834. [Article](#)
- Musyl, M. K., R. W. Brill, C. H. Boggs, D. S. Curran, T. K. Kazama, and M. P. Seki.
2003. Vertical movements of bigeye tuna (*Thunnus obesus*) associated with islands, buoys, and seamounts near the main Hawaiian Islands from archival tagging data. *Fish. Oceanogr.* 12:152–169. [Article](#)
- Neilson, J. D., and R. I. Perry.
1990. Diel vertical migrations of marine fishes: an obligate or facultative process? *In Advances in marine biology*, vol. 26 (J. H. Blaxter and A. J. Southward, eds.), p. 115–168. Academic Press, San Diego.
- Norton, J. G.
1999. Apparent habitat extensions of dolphinfin (*Coryphaena hippurus*) in response to climate transients in the California current. *Sci. Mar.* 63:239–260. [Article](#)
- Olson, R. J., and F. Galván-Magaña.
2002. Food habits and consumption rates of common dolphinfin (*Coryphaena hippurus*) in the eastern Pacific Ocean. *Fish. Bull.* 100:279–298.
- Oxenford, H. A.
1999. Biology of the dolphinfin (*Coryphaena hippurus*) in the western central Atlantic: a review. *Sci. Mar.* 63:277–301. [Article](#)
- Oxenford, H. A., and W. Hunte.
1999. Feeding habits of the dolphinfin (*Coryphaena hippurus*) in the eastern Caribbean. *Sci. Mar.* 63:303–315. [Article](#)
- Palko, B. J., G. L. Beardsley, and W. J. Richards.
1982. Synopsis of the biological data on dolphin-fishes,

- Coryphaena hippurus* Linnaeus and *Coryphaena equiselis* Linnaeus. FAO Fish. Synop. 130. NOAA Tech. Rep. NMFS Circ. 443, 28 p.
- Rodríguez-Ferrer, G., Y. Rodríguez-Ferrer, D. Matos-Caraballo, and C. L. Yestrom.
2004. Comparison of dolphinfish (*Coryphaena hippurus*) commercial and recreational fisheries in Puerto Rico during 2000–2003. Proc. Gulf Caribb. Fish. Inst. 57:297–316.
- R Core Team.
2013. R: a language and environment for statistical computing. R Foundation for Statistical Computing, Vienna, Austria. [Available from [website](#), accessed March 2015.]
- Rooker, J. R., J. P. Turner, and S. A. Holt.
2006. Trophic ecology of *Sargassum*-associated fishes in the Gulf of Mexico determined from stable isotopes and fatty acids. Mar. Ecol. Prog. Ser. 313:249–259. [Article](#)
- Rose, C. D., and W. W. Hassler.
1974. Food habits and sex ratios of dolphin *Coryphaena hippurus* captured in the western Atlantic Ocean off Hatteras, North Carolina. Trans. Am. Fish. Soc. 103:94–100. [Article](#)
- Rudershausen, P. J., J. A. Buckel, J. Edwards J., D. P. Gannon, C. M. Butler, and T. W. Averett.
2010. Feeding ecology of blue marlins, dolphinfish, yellowfin tuna, and wahoos from the North Atlantic Ocean and comparisons with other oceans. Trans. Am. Fish. Soc. 139:1335–1359. [Article](#)
- Schaefer, K. M., and D. W. Fuller.
2005. Behavior of bigeye (*Thunnus obesus*) and skipjack (*Katsuwonus pelamis*) tunas within aggregations associated with floating objects in the equatorial eastern Pacific. Mar. Biol. 146:781–792. [Article](#)
2010. Vertical movements, behavior, and habitat of bigeye tuna (*Thunnus obesus*) in the equatorial eastern Pacific Ocean, ascertained from archival tag data. Mar. Biol. 157:2625–2642. [Article](#)
- Schaefer, K. M., D. W. Fuller, and B. A. Block.
2007. Movements, behavior, and habitat utilization of yellowfin tunas (*Thunnus albacares*) in the northeastern Pacific Ocean, ascertained through archival tag data. Mar. Biol. 152:503–525. [Article](#)
2011. Movements, behavior, and habitat utilization of yellowfin tunas (*Thunnus albacares*) in the Pacific Ocean off Baja California, Mexico, determined from archival tag data analysis, including unscented Kalman filtering. Fish. Res. 112:22–37. [Article](#)
- Schwenke, K. L., and J. A. Buckel.
2008. Age, growth, and reproduction of dolphinfish (*Coryphaena hippurus*) caught off the coast of North Carolina. Fish. Bull. 106:82–92.
- Sepulveda, C. A., S. A. Aalbers, S. Ortega-Garcia, N. C. Wegner, and D. Bernal.
2011. Depth distribution and temperature preferences of wahoo (*Acanthocybium solandri*) off Baja California Sur, Mexico. Mar. Biol. 158:917–926. [Article](#)
- Takahashi, J. S., and M. Zatz.
1982. Regulation of circadian rhythmicity. Science 217:1104–1111. [Article](#)
- Taquet, M.
2004. Le comportement agrégatif de la dorade coryphène (*Coryphaena hippurus*) autour des objets flottants. Ph.D. thesis, 168 p. Univ. Paris, Paris.
- Taquet, M., G. Sancho, L. Dagorn, J.-C. Gaertner, D. Itano, R. Aumeeruddy, B. Wendling, and C. Peignon.
2007. Characterizing fish communities associated with drifting fish aggregating devices (FADs) in the Western Indian Ocean using underwater visual surveys. Aquat. Living Resour. 20:331–341. [Article](#)
- Tremblay, A., and J. Ransijn.
2013. LMERCvenienceFunctions: a suite of functions to back-fit sized effects and forward-fit random effects, as well as other miscellaneous functions. R package, vers. 2.5.
- Tripp-Valdez, A., F. Galván-Magaña F., and S. Ortega-García.
2010. Feeding habits of dolphinfish (*Coryphaena hippurus*) in the southeastern Gulf of California, Mexico. J. Appl. Ichthyol. 26:578–582. [Article](#)
- Trippel, E. A.
1995. Age at maturity as a stress indicator in fisheries. BioScience 45:759–771. [Article](#)
- Willis, J., J. Phillips, R. Muheim, F. J. Diego-Rasilla, and A. J. Hobday.
2009. Spike dives of juvenile southern bluefin tuna (*Thunnus maccoyii*): a navigational role? Behav. Ecol. Sociobiol. 64:57–68. [Article](#)